



Dual Induction Log

DIGITAL LOG (785) 625-3858

15-051-26,193-00-00

API No.

Company TDI, Inc.

Well Charlotte No. 2

Field Unnamed

County Ellis State Kansas

Location 2150' FSL & 2300' FEL

Sec: 15 Twp: 15 S Rge: 19 W

Permanent Datum Ground Level Elevation 2006
Log Measured From Kelly Bushing 10 Ft. Above Perm. Datum
Drilling Measured From Kelly Bushing

Other Services
CNL/CDL
Elevation
K.B. 2016
D.F.
G.L. 2006

Date 10/21/2011

Run Number One

Depth Driller 3684

Depth Logger 3682

Bottom Logged Interval 3681

Top Log Interval 1200

Casing Driller 8.625 @ 1224

Casing Logger 1224

Bit Size 7.875

Type Fluid in Hole Chemical

Salinity,ppm CL 4.500

Density / Viscosity 8.9 48

pH / Fluid Loss 11.0 5.2

Source of Sample Flowline

Rm @ Meas. Temp .85 @ 68

Rmf @ Meas. Temp .64 @ 68

Rmc @ Meas. Temp 1.15 @ 68

Source of Rmf / Rmc Charts

Rm @ BHT .50 @ 115

Operating Rig Time 3 Hours

Max Rec. Temp. F 115

Equipment Number 91

Location Hays

Recorded By K. Bange

Witnessed By Herb Deines

<<< Fold Here >>>

All interpretations are opinions based on inferences from electrical or other measurements and we cannot and do not guarantee the accuracy or correctness of any interpretation, and we shall not, except in the case of gross or willful negligence on our part, be liable or responsible for any loss, costs, damages, or expenses incurred or sustained by anyone resulting from any interpretation made by any of our officers, agents or employees. These interpretations are also subject to our general terms and conditions set out in our current Price Schedule.

Comments

Thank you for using Log-Tech, Inc.
(785) 625-3858

Antonino, 1 W, 2 1/2 S, W into

Database File: c:\warrior\data\tdi_charlotte no. 2\tdi102111hd.db
Dataset Pathname: dil\tdistack
Presentation Format: dil2in
Dataset Creation: Fri Oct 21 18:26:07 2011
Charted by: Depth in Feet scaled 1:600

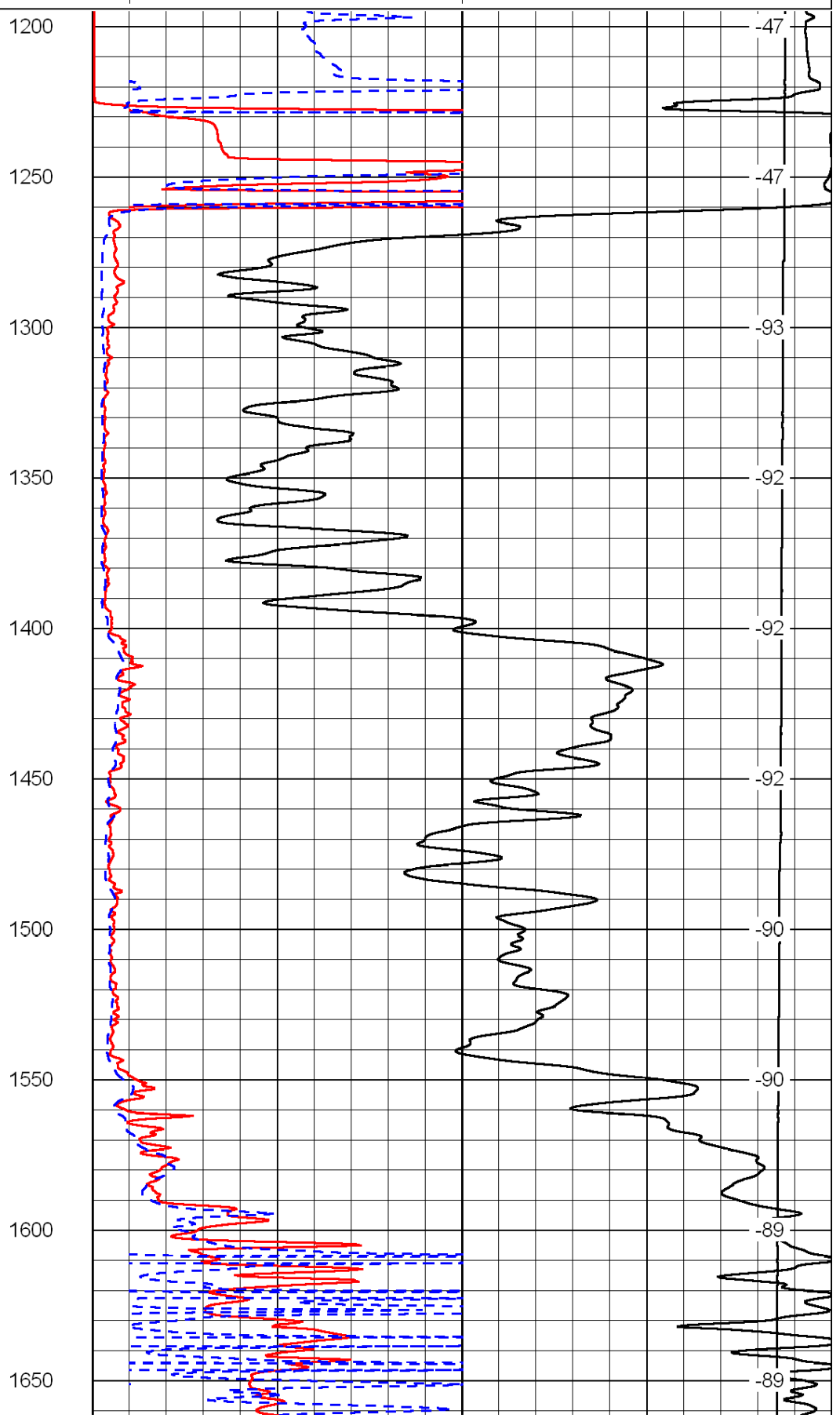
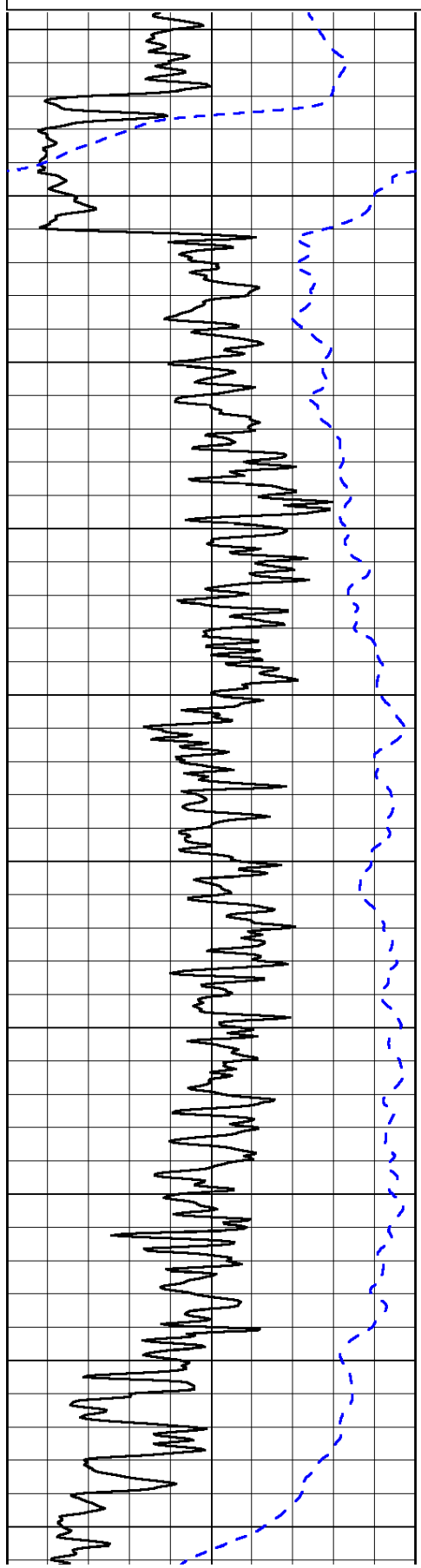
0	Gamma Ray	150
-200	SP (mV)	0

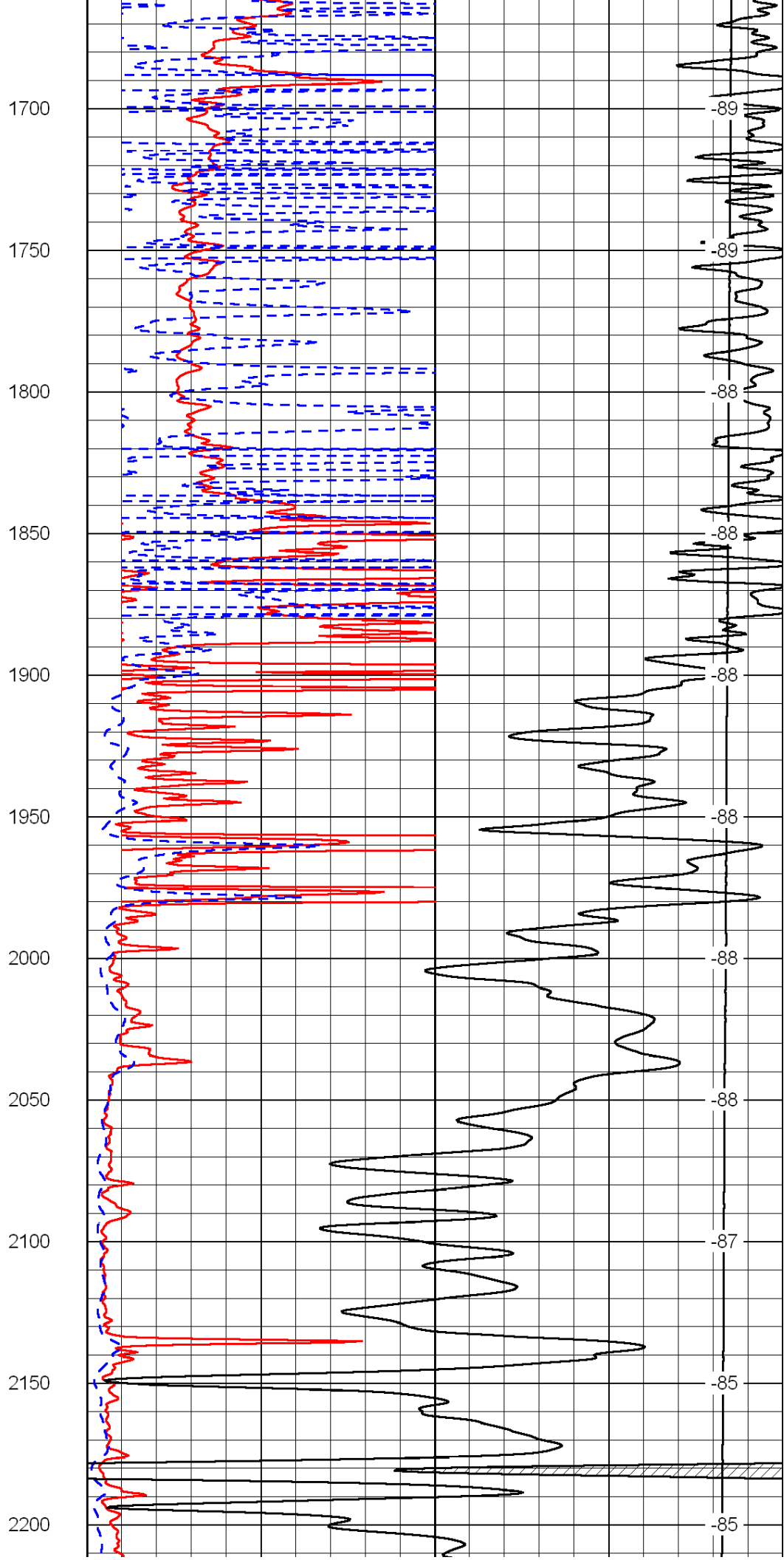
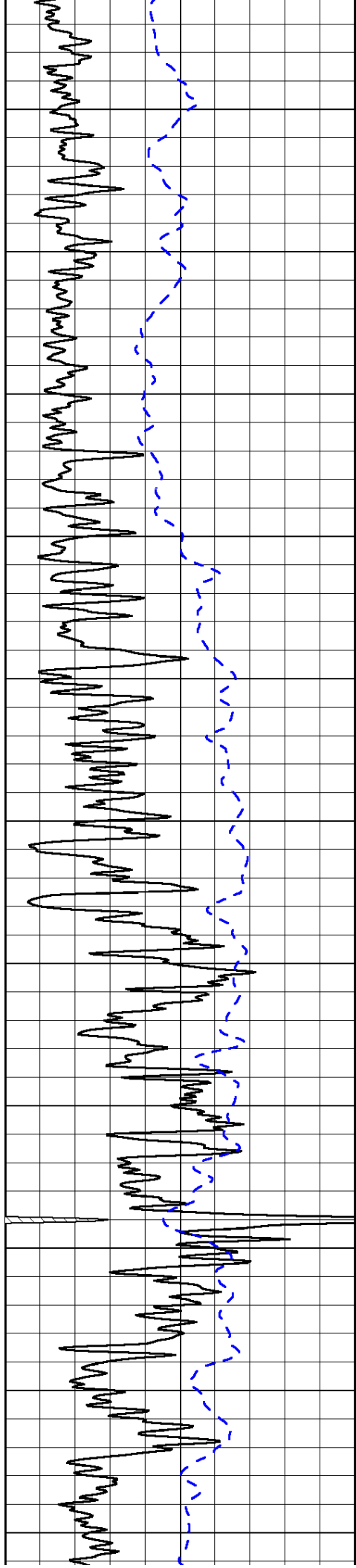
0	Shallow Resistivity	50
0	Deep Resistivity	50

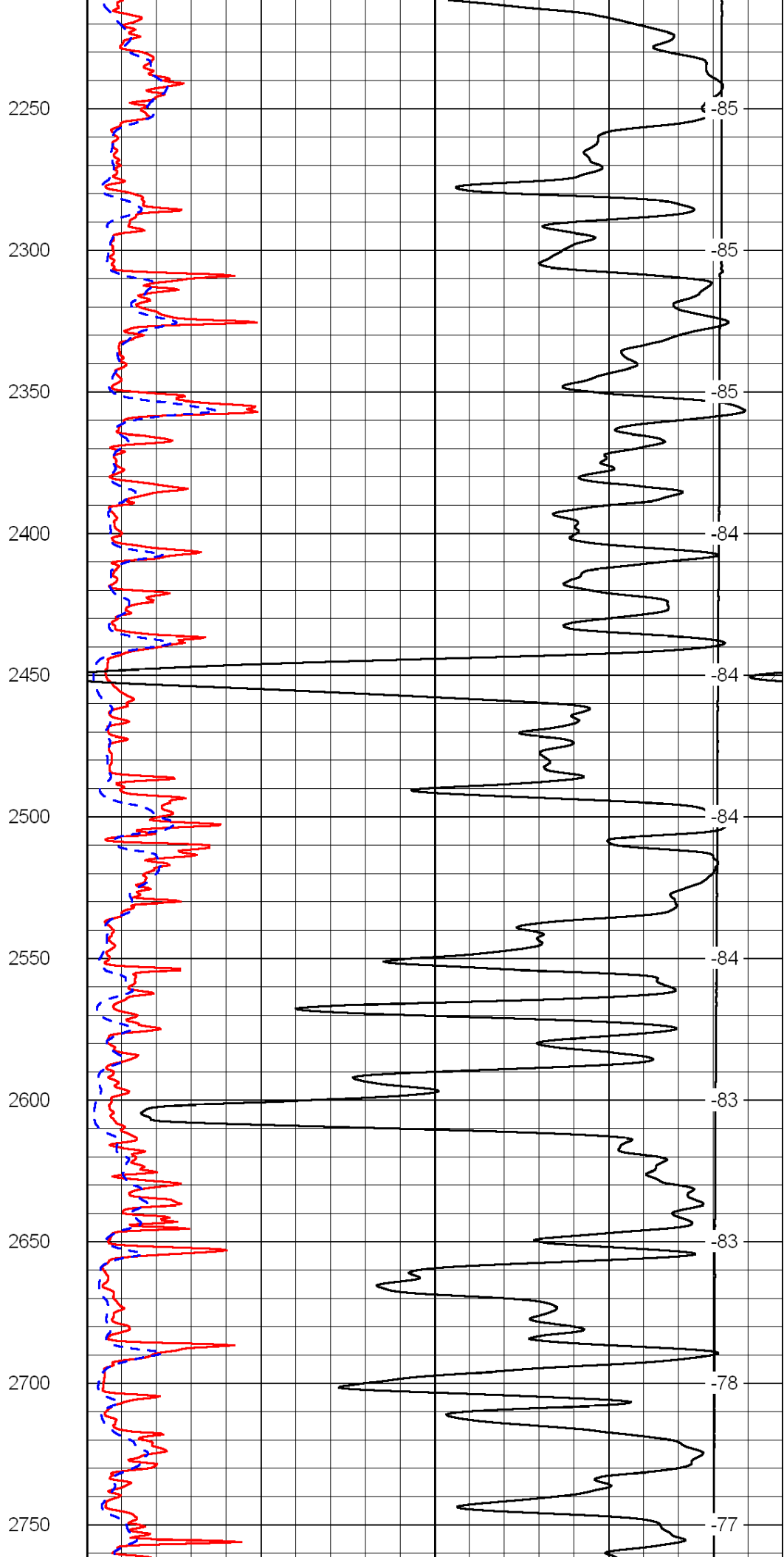
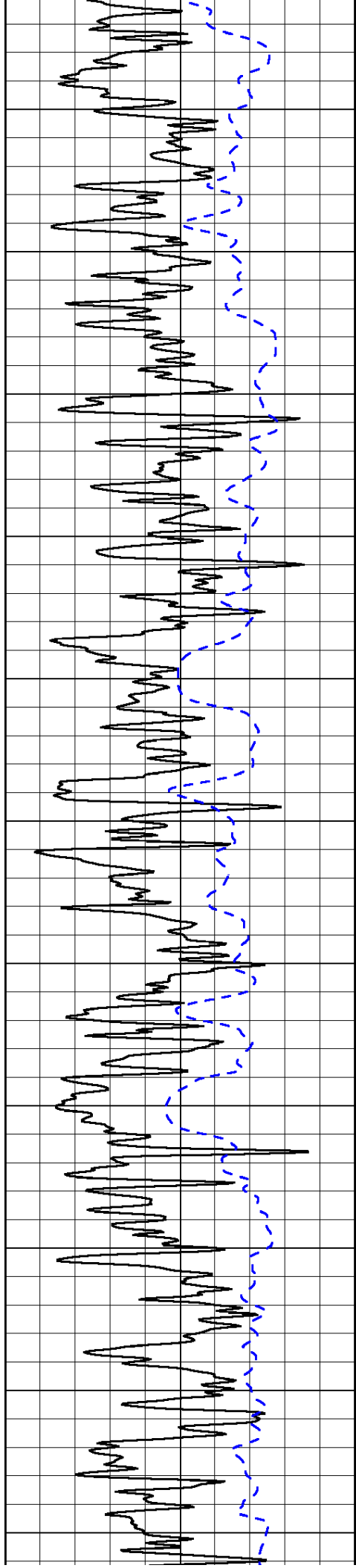
LSPD

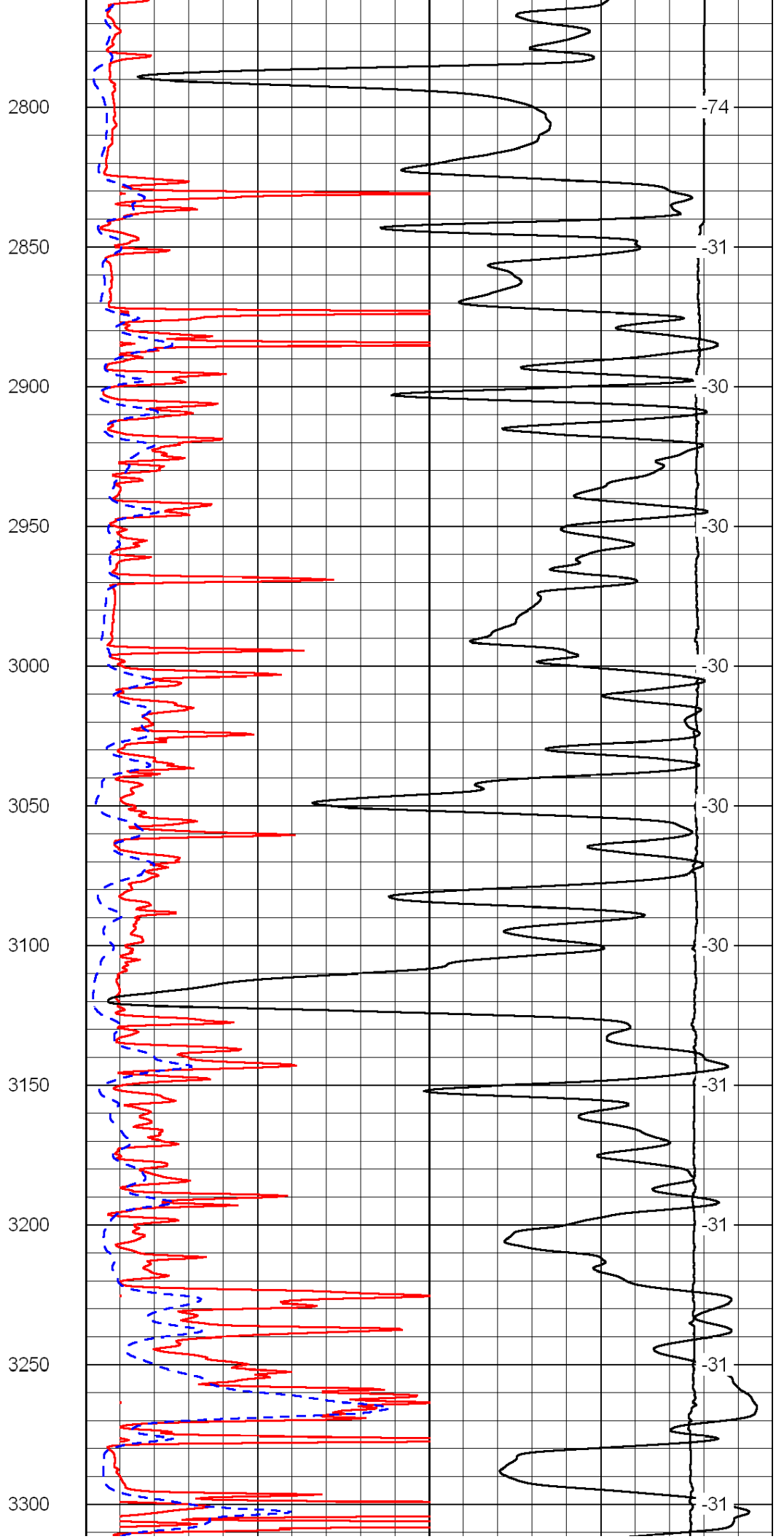
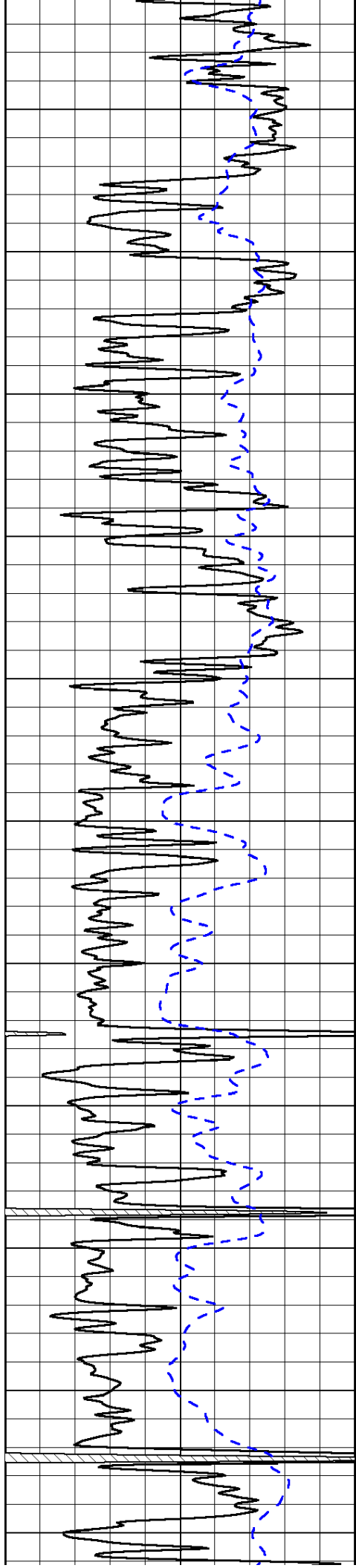
1000	Conductivity	0
15000	Line Tension	0

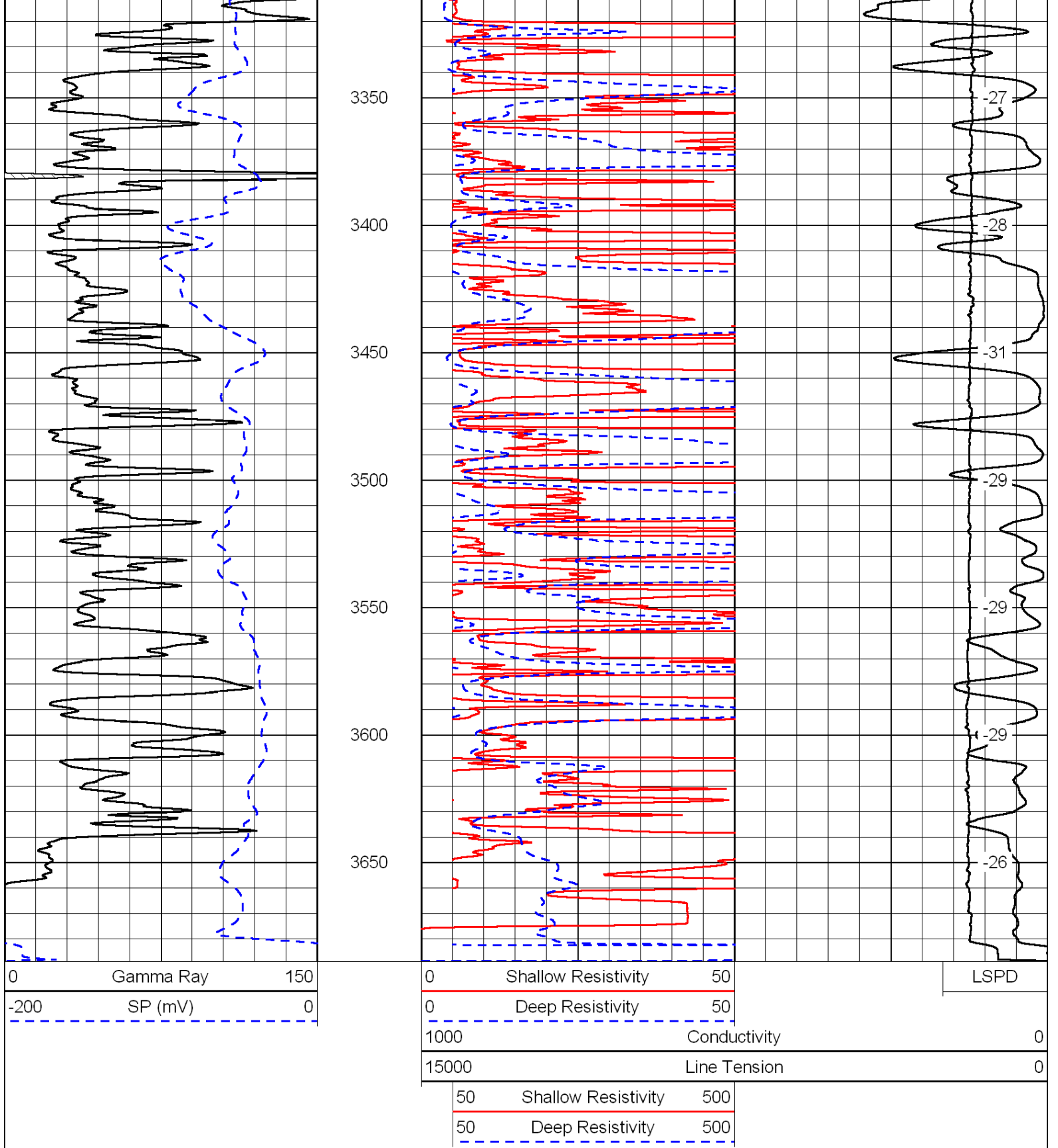
50	Shallow Resistivity	500
50	Deep Resistivity	500



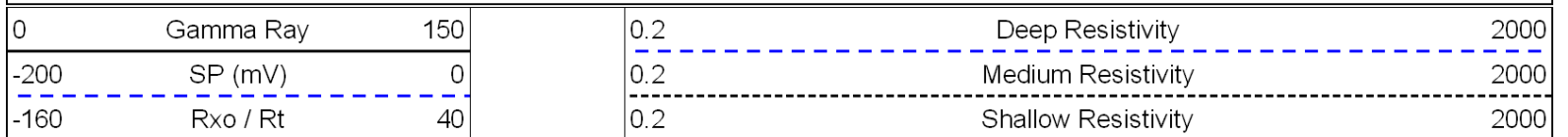








Database File: c:\warrior\data\tdi_charlotte no. 2\tdi102111hd.db
 Dataset Pathname: dil\tdistack
 Presentation Format: dil
 Dataset Creation: Fri Oct 21 18:26:07 2011
 Charted by: Depth in Feet scaled 1:240

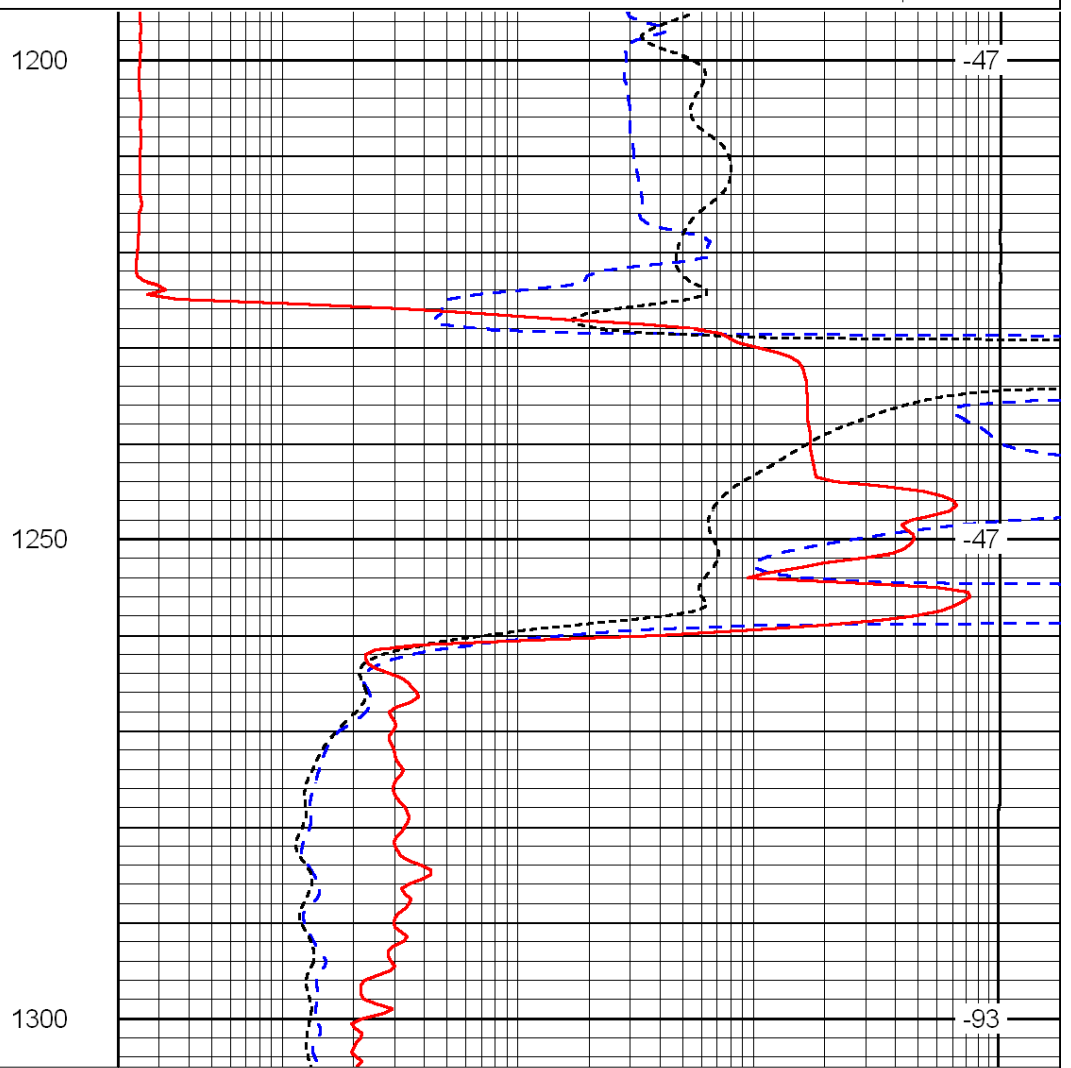
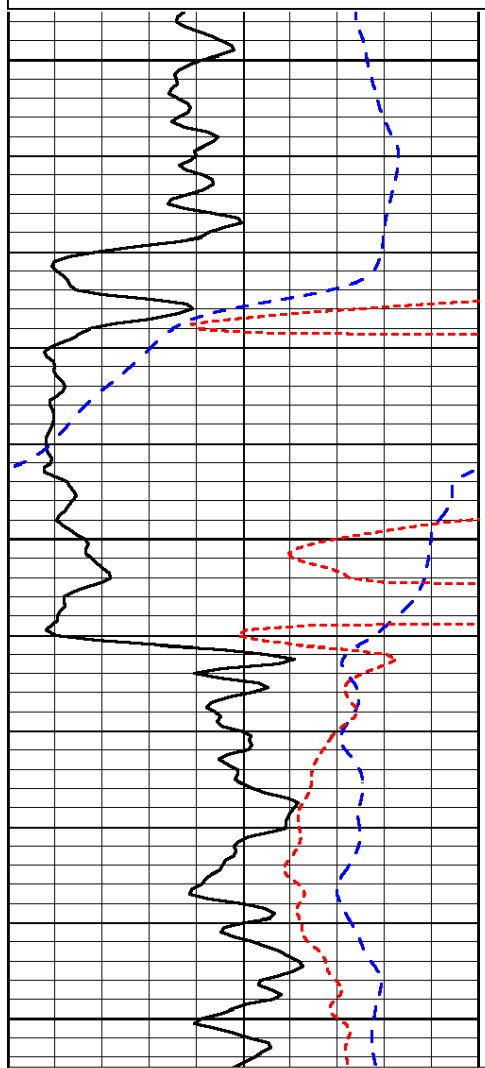


15000

Line Tension

0

LSPD



0	Gamma Ray	150
-200	SP (mV)	0
-160	Rxo / Rt	40

0.2	Deep Resistivity	2000
0.2	Medium Resistivity	2000
0.2	Shallow Resistivity	2000

15000 Line Tension 0

LSPD

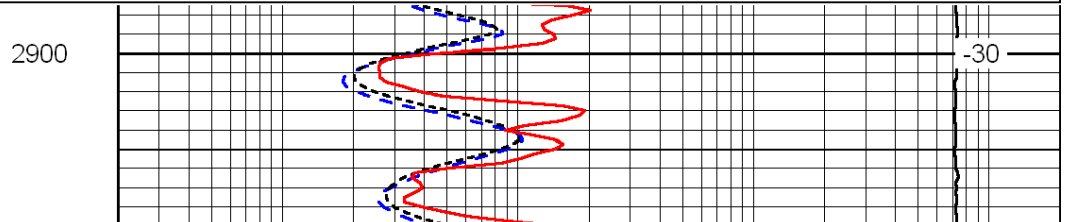
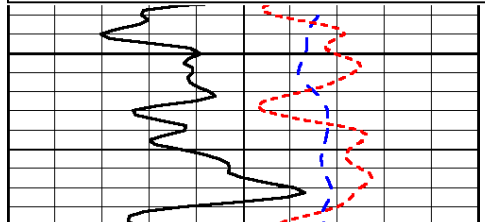
Database File: c:\warrior\data\tdi_charlotte no. 2\tdi102111hd.db
 Dataset Pathname: dil\tdistack
 Presentation Format: dil
 Dataset Creation: Fri Oct 21 18:26:07 2011
 Charted by: Depth in Feet scaled 1:240

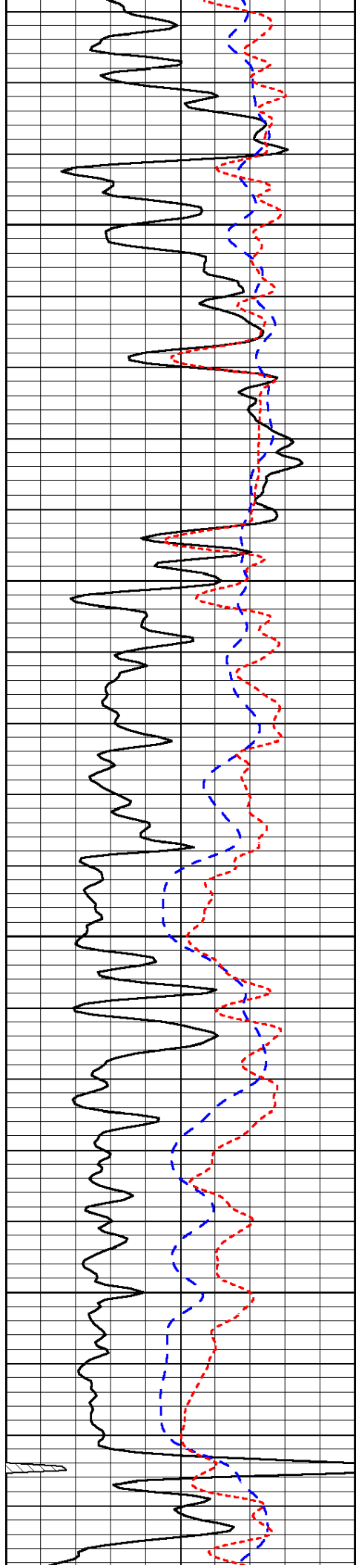
0	Gamma Ray	150
-200	SP (mV)	0
-160	Rxo / Rt	40

0.2	Deep Resistivity	2000
0.2	Medium Resistivity	2000
0.2	Shallow Resistivity	2000

15000 Line Tension 0

LSPD



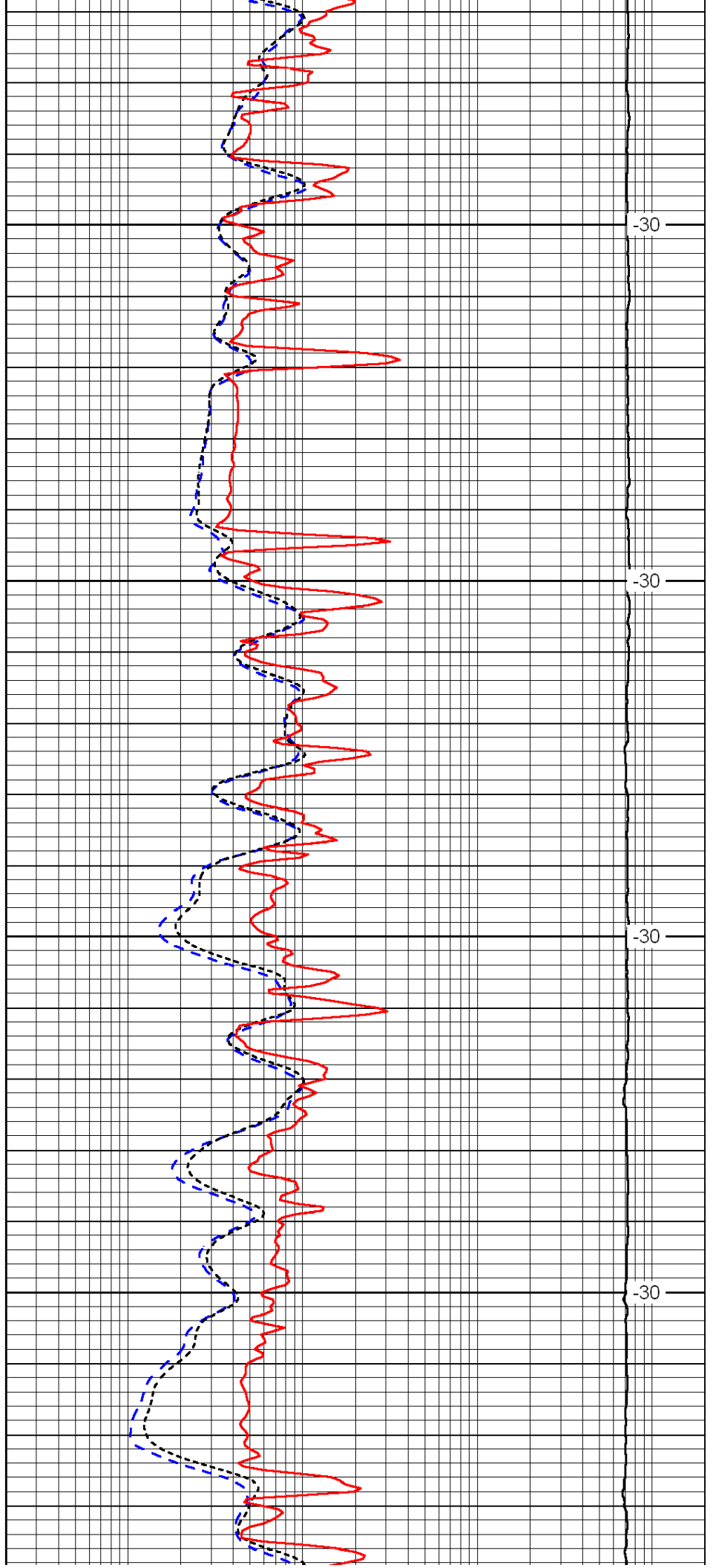


2950

3000

3050

3100

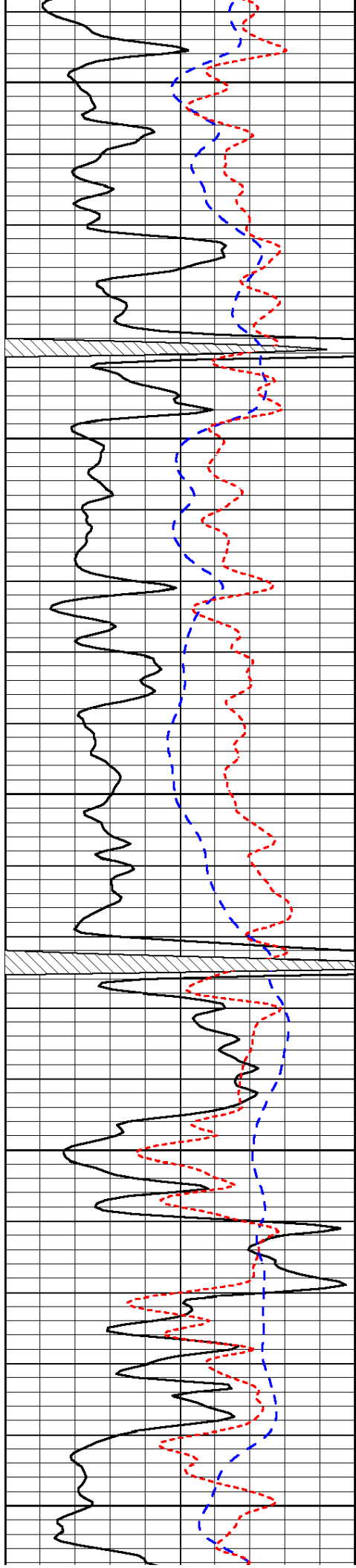


-30

-30

-30

-30



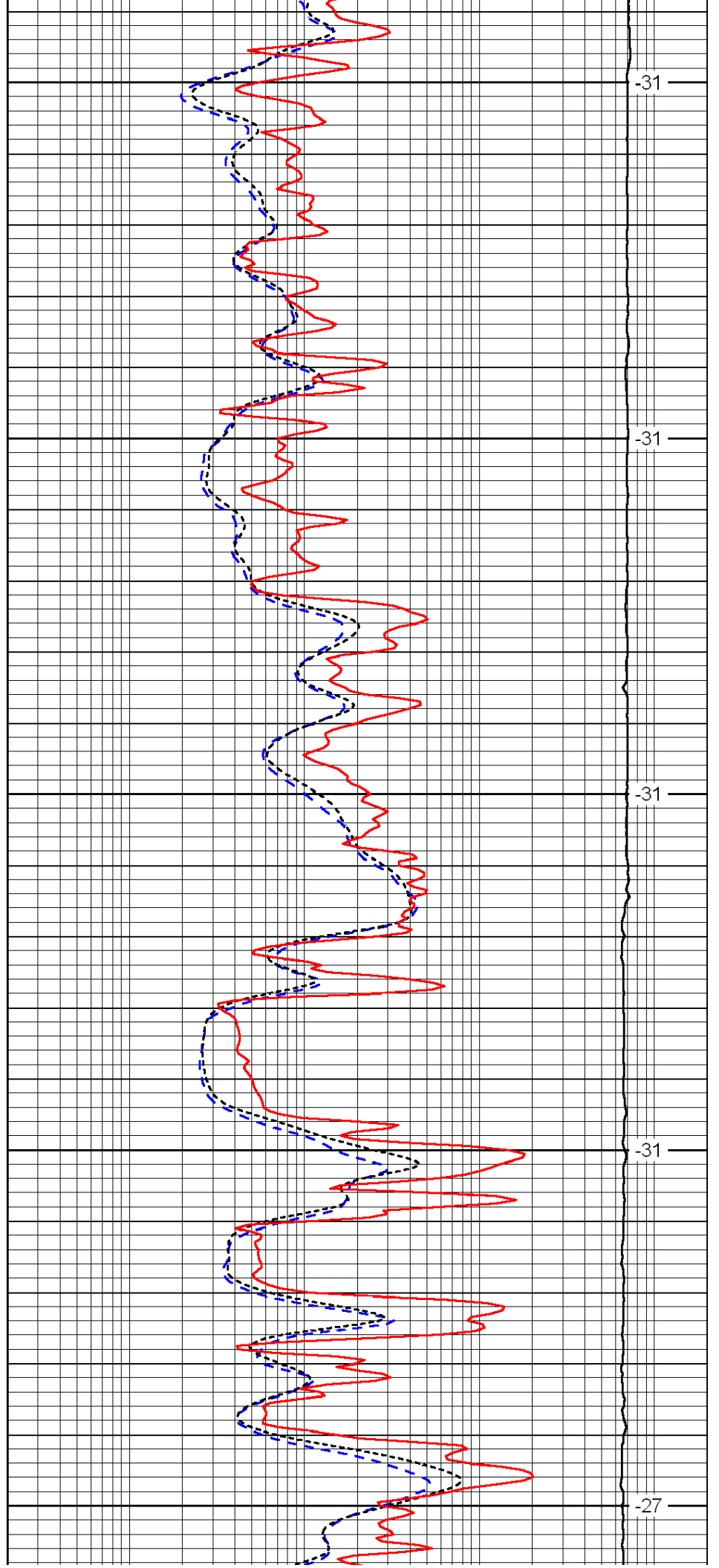
3150

3200

3250

3300

3350



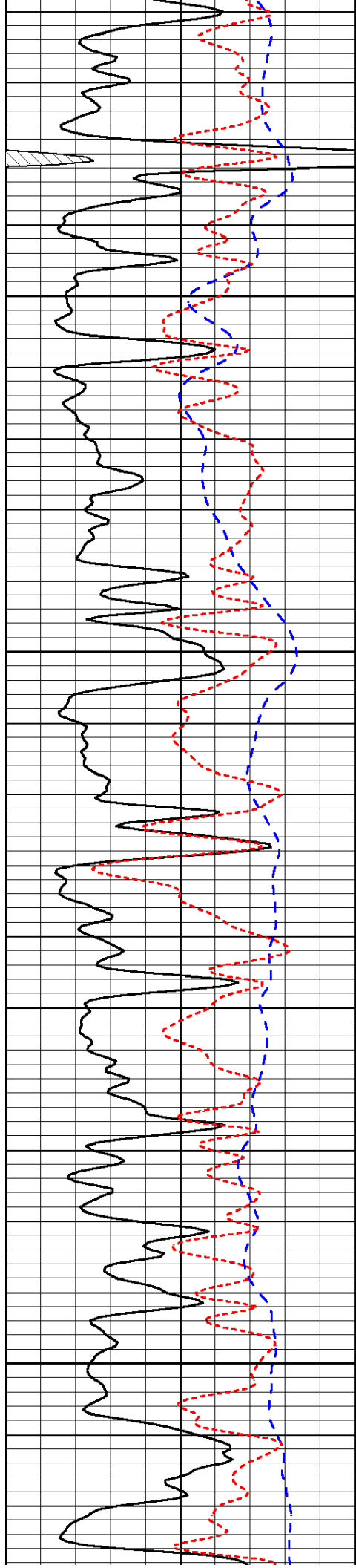
-31

-31

-31

-31

-27

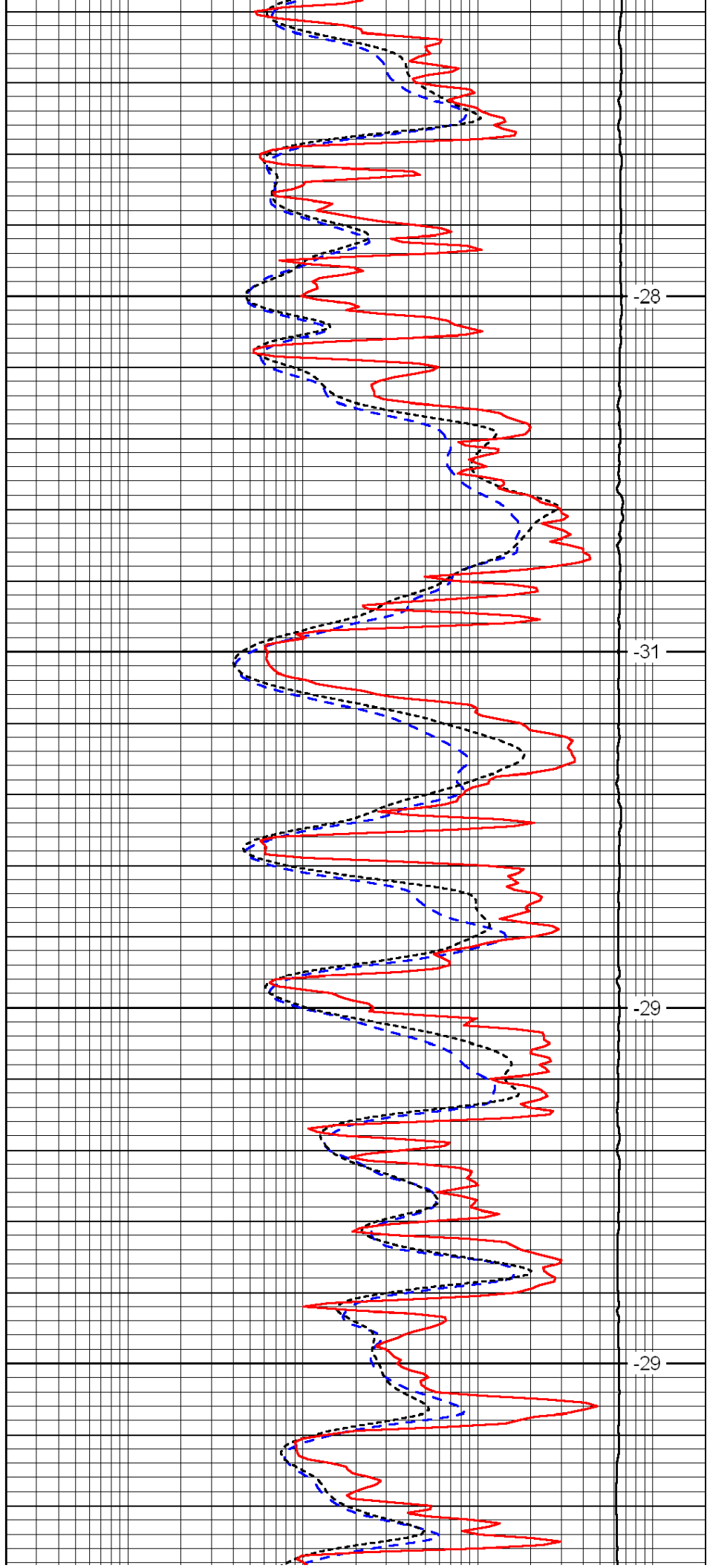


3400

3450

3500

3550

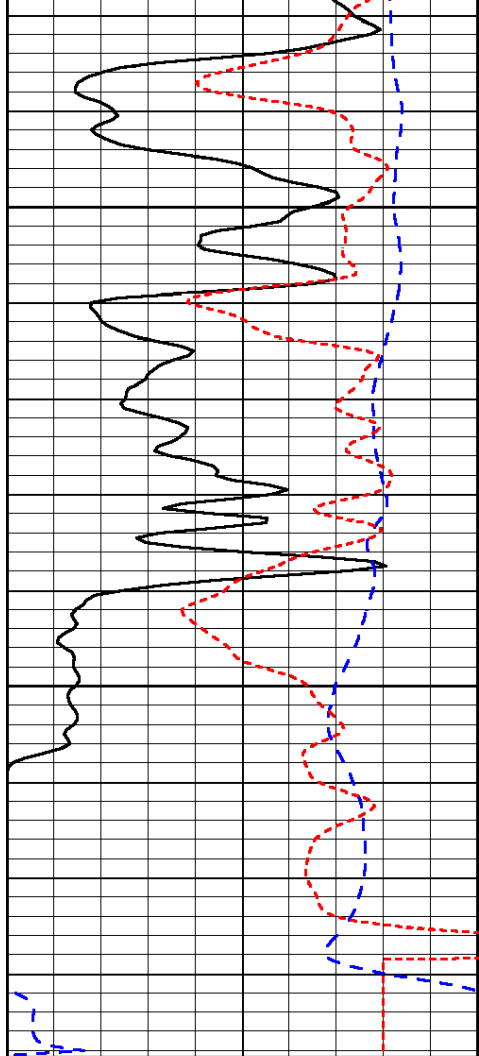


-28

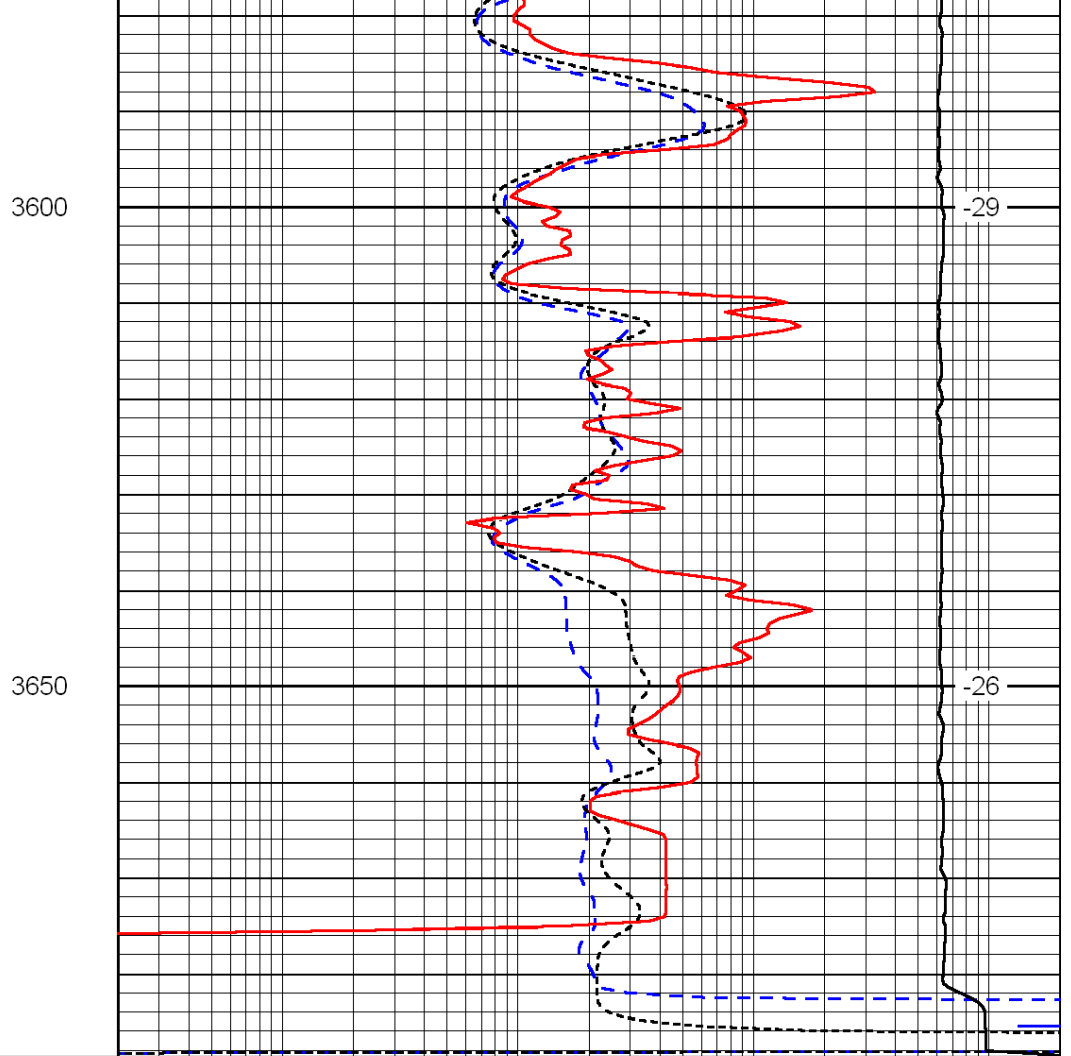
-31

-29

-29



0	Gamma Ray	150
-200	SP (mV)	0
-160	Rxo / Rt	40



0.2	Deep Resistivity	2000
0.2	Medium Resistivity	2000
0.2	Shallow Resistivity	2000
15000	Line Tension	0

LSPD