



DIGITAL LOG (785) 625-3858

Microresistivity Log

15-163-23,982-00-00

API No.

Company Vess Oil Corporation
 Well Younger No. 2
 Field Codell
 County Rooks State Kansas

Location 1040' FSL & 330' FWL
 Sec: 7 Twp: 10 S Rge: 16 W

Permanent Datum Ground Level Elevation 1953
 Log Measured From Kelly Bushing 8 Ft. Above Perm. Datum
 Drilling Measured From Kelly Bushing

Other Services
 CNL/CDL
 DIL
 Elevation
 K.B. 1961
 D.F. 1953
 G.L. 1953

Date	9/29/2011
Run Number	Two
Depth Driller	3497
Depth Logger	3493
Bottom Logged Interval	3492
Top Log Interval	2700
Casing Driller	8.625 @ 233
Casing Logger	230
Bit Size	7.875
Type Fluid in Hole	Chemical
Salinity, ppm CL	2000
Density / Viscosity	9.0 56
pH / Fluid Loss	10.5 6.0
Source of Sample	Flowline
Rm @ Meas. Temp	.25 @ 72
Rmf @ Meas. Temp	.19 @ 72
Rmc @ Meas. Temp	.34 @ 72
Source of Rmf / Rmc	Charts
Rm @ BHT	.16 @ 111
Operating Rig Time	5 Hours
Max Rec. Temp. F	111
Equipment Number	15
Location	Hays
Recorded By	D. Kerr
Witnessed By	Roger Martin

<<< Fold Here >>>

All interpretations are opinions based on inferences from electrical or other measurements and we cannot and do not guarantee the accuracy or correctness of any interpretation, and we shall not, except in the case of gross or willful negligence on our part, be liable or responsible for any loss, costs, damages, or expenses incurred or sustained by anyone resulting from any interpretation made by any of our officers, agents or employees. These interpretations are also subject to our general terms and conditions set out in our current Price Schedule.

Comments

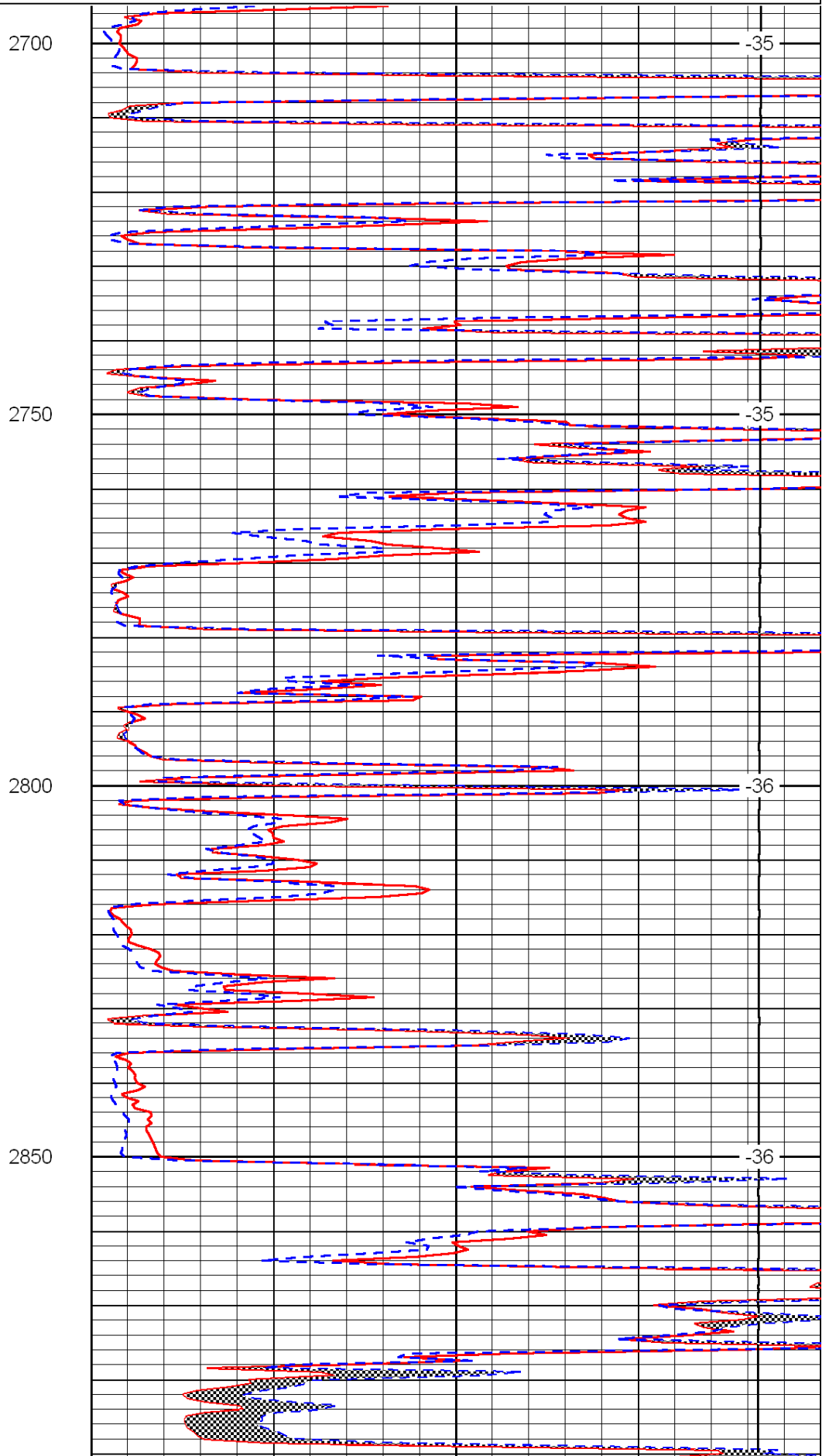
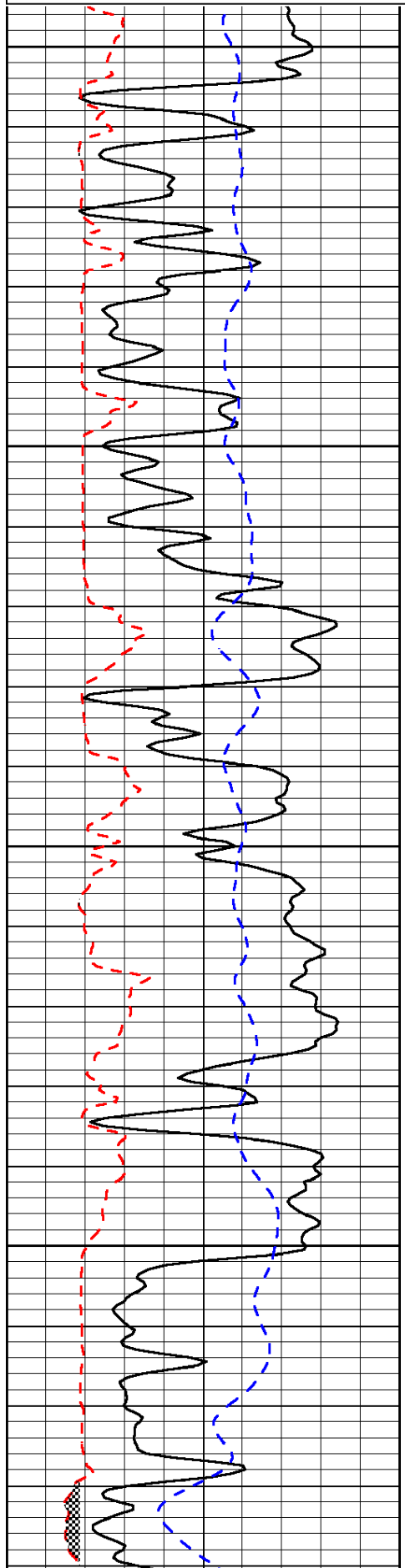
Thank you for using Log-Tech, Inc.
 (785) 625-3858
 Codell KS, East to 25 RD,
 1/4 South, East Into

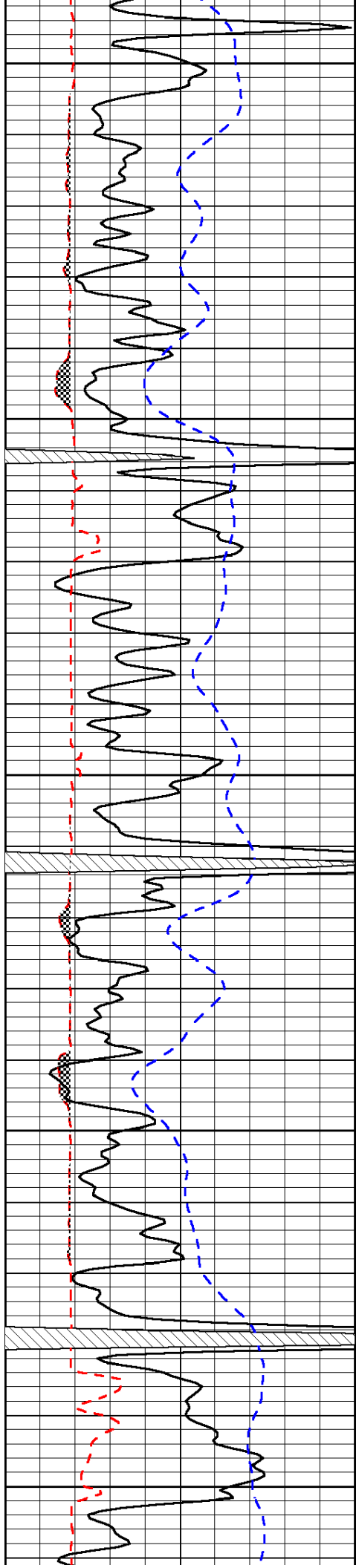
Database File: c:\warrior\data\vess_younger no. 2\vess_younger_2hd.db
 Dataset Pathname: DIL/vessstk
 Presentation Format: micro
 Dataset Creation: Thu Sep 29 08:52:35 2011
 Charted by: Depth in Feet scaled 1:240

0	Gamma Ray	150
6	Micro Log Caliper (GAPI)	16
-200	SP (mV)	0

0	Micro Inverse 1 X 1	40
0	Micro Normal 2"	40
15000	Line Weight	0

LSPD





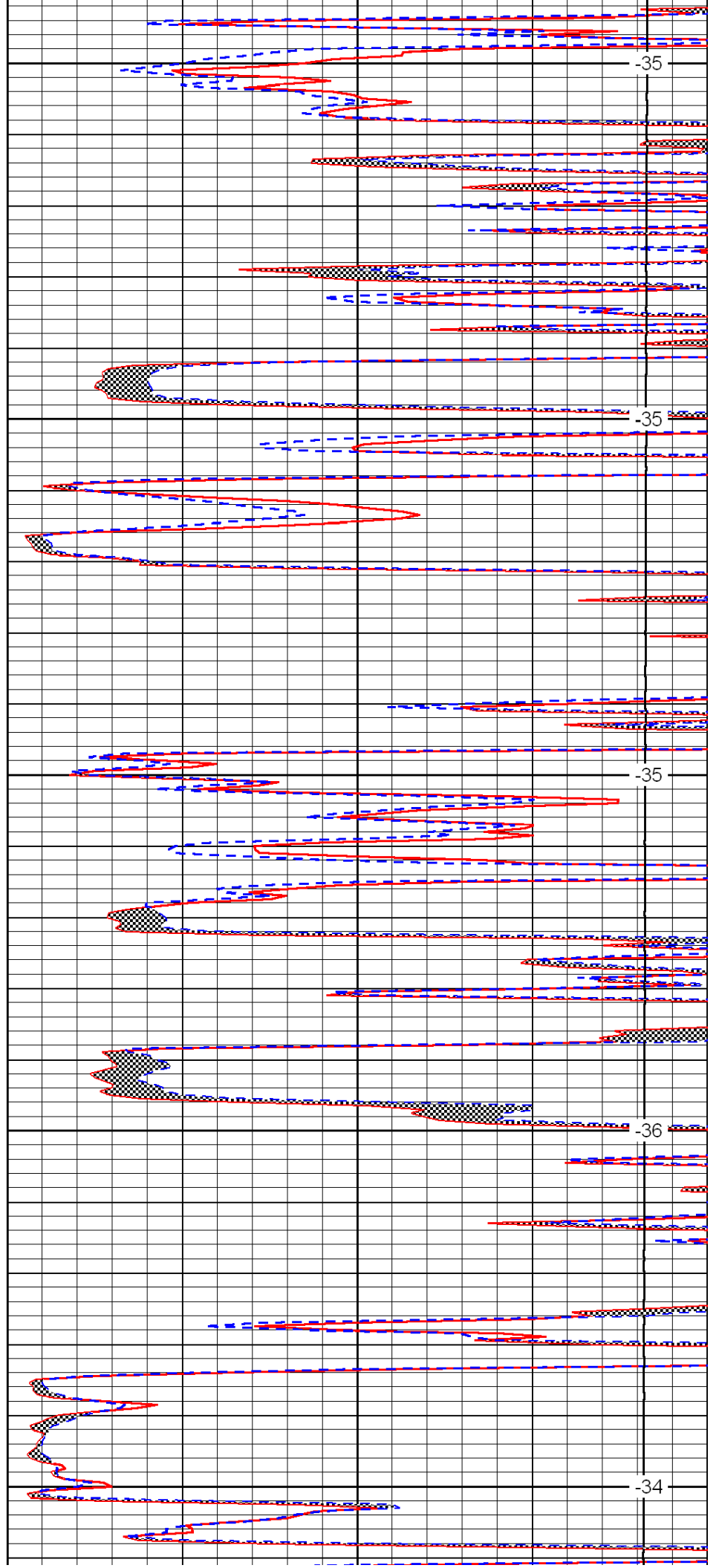
2900

2950

3000

3050

3100



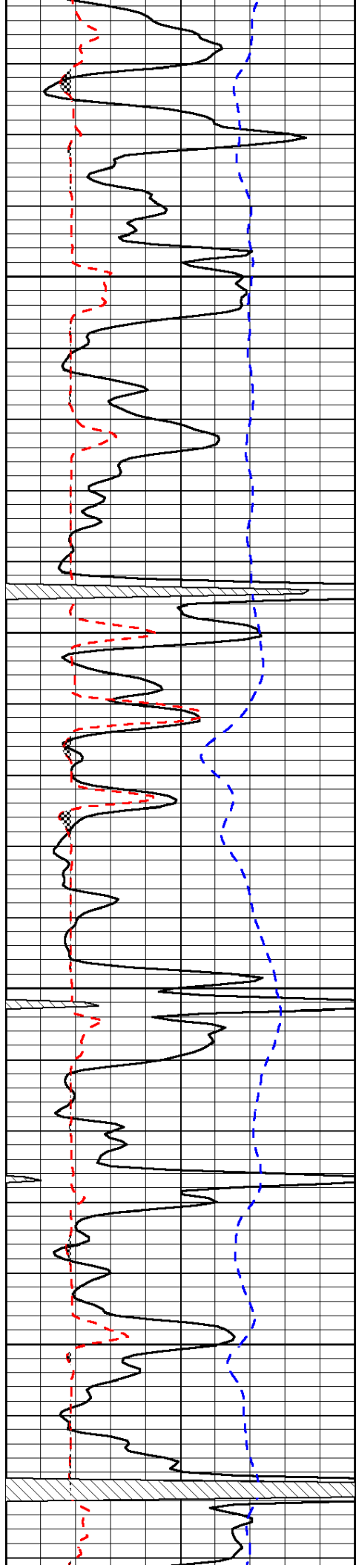
-35

-35

-35

-36

-34

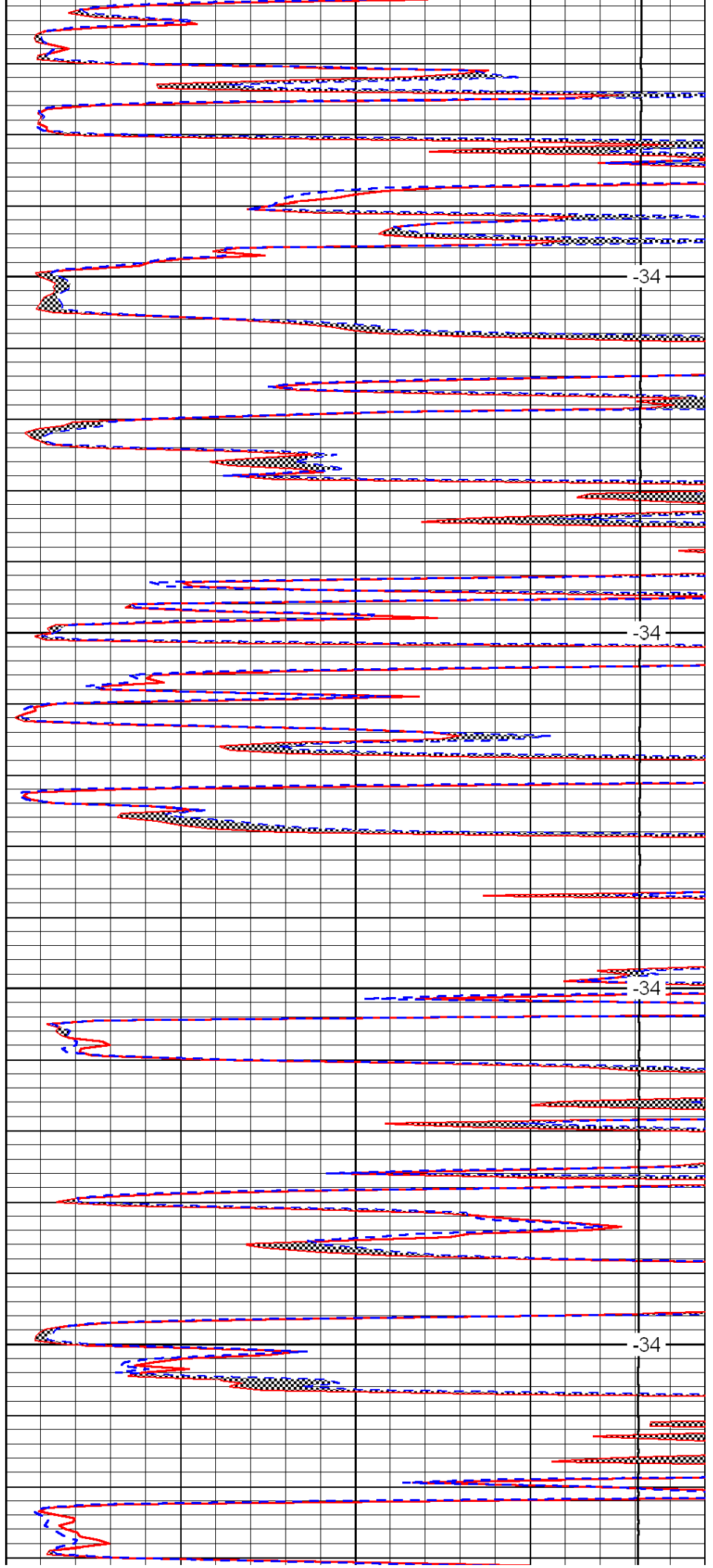


3150

3200

3250

3300



-34

-34

-34

-34

