



DIGITAL LOG (785) 625-3858

Dual Compensated Porosity Log

15-163-23,982-00-00

API No. 15-163-23,982-00-00

Company Vess Oil Corporation
 Well Younger No. 2
 Field Codell
 County Rooks
 State Kansas

Location 1040' FSL & 330' FWL

Sec: 7 Twp: 10 S Rge: 16 W

Other Services
 DIL
 MEL

Permanent Datum Ground Level Elevation 1953
 Log Measured From Kelly Bushing 8 Ft. Above Perm. Datum
 Drilling Measured From Kelly Bushing

Elevation
 K.B. 1961
 D.F. 1953
 G.L. 1953

Date	9/29/2011	
Run Number	One	
Type Log	CNL / CDL	
Depth Driller	3497	
Depth Logger	3493	
Bottom Logged Interval	3472	
Top Logged Interval	2700	
Type Fluid In Hole	Chemical	
Salinity, PPM CL	2000	
Density Level	9.0	
Level	Full	
Max. Rec. Temp. F	111	
Operating Rig Time	5 Hours	
Equipment -- Location	15 Days	
Recorded By	D Kerr	
Witnessed By	Roger Martin	

Borehole Record			Casing Record				
Run No.	Bit	From	To	Size	Wgt.	From	To
1	12.25	00	233	8.625	24#	00	233
2	7.875	233	3497				

<<< Fold Here >>>

All interpretations are opinions based on inferences from electrical or other measurements and we cannot and do not guarantee the accuracy or correctness of any interpretation, and we shall not, except in the case of gross or willful negligence on our part, be liable or responsible for any loss, costs, damages, or expenses incurred or sustained by anyone resulting from any interpretation made by any of our officers, agents or employees. These interpretations are also subject to our general terms and conditions set out in our current Price Schedule.

Comments

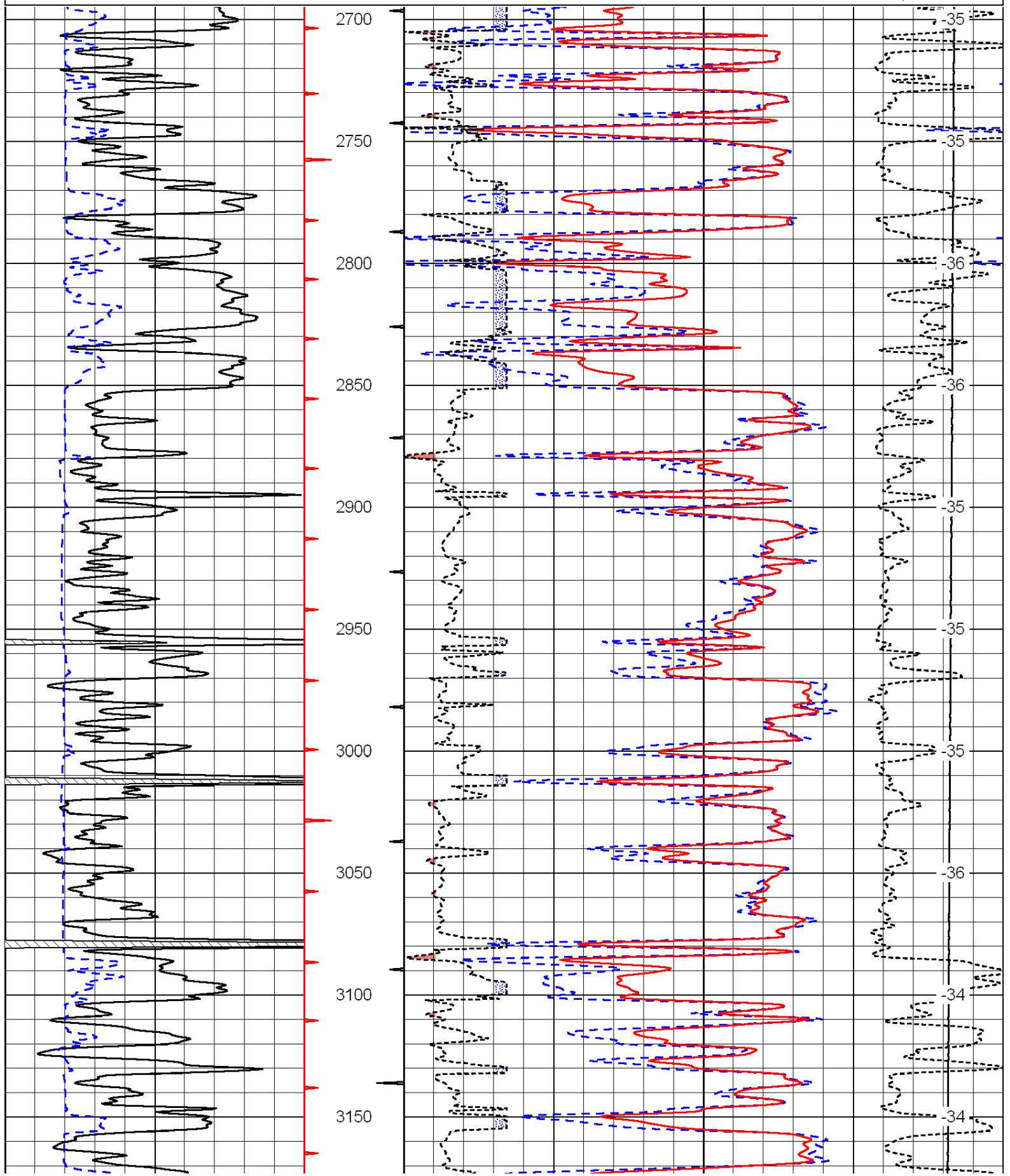
Thank you for using Log-Tech, Inc.
 (785) 625-3858

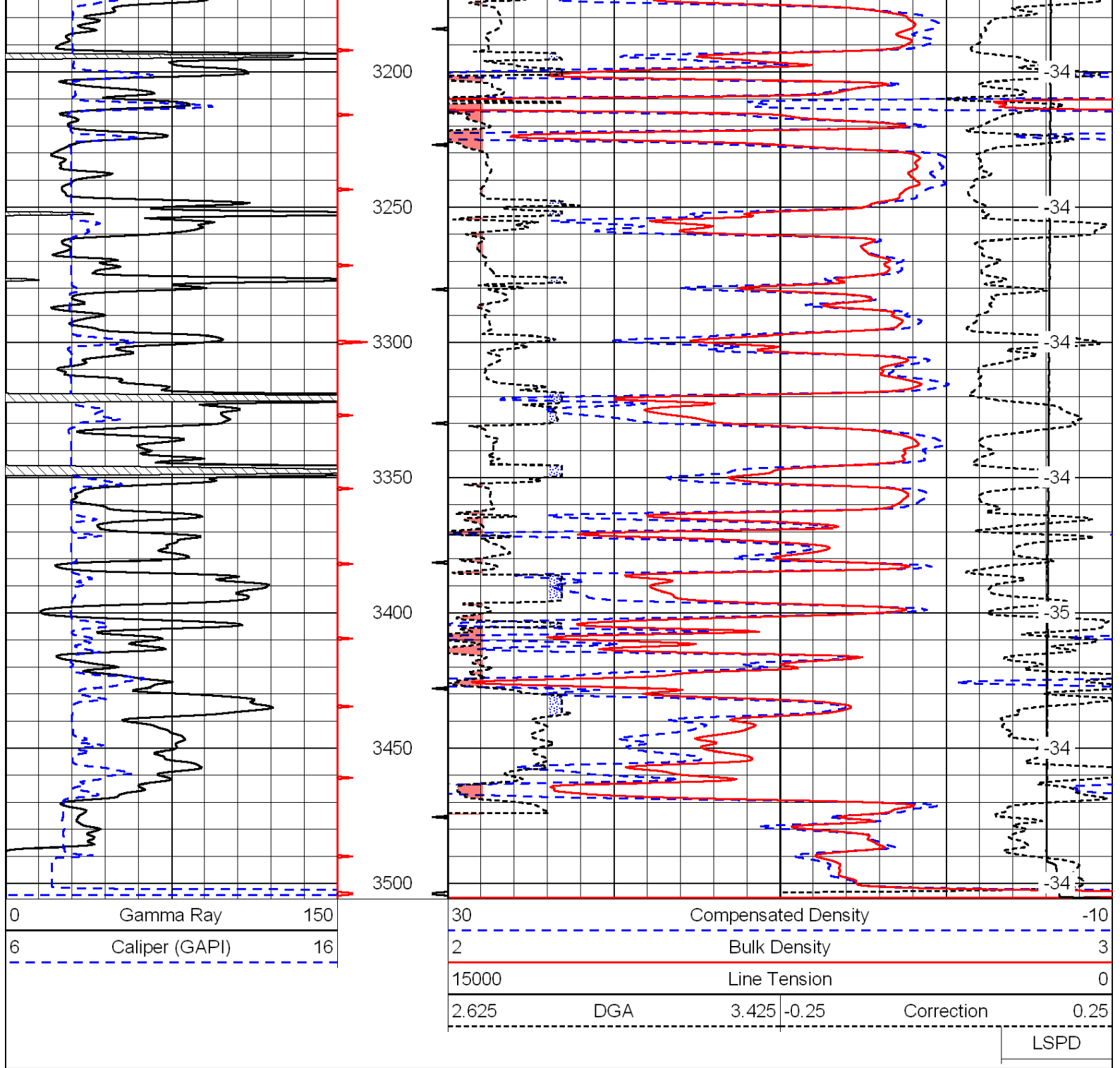
Codell KS, East to 25 RD,
 1/4 South, East Into

0	Gamma Ray	150
6	Caliper (GAPI)	16

30	Compensated Density		-10
2	Bulk Density		3
15000	Line Tension		0
2.625	DGA	3.425	-0.25
Correction			0.25

LSPD





Database File: c:\warrior\data\vessex_younger no. 2\vessex_younger_2hd.db
 Dataset Pathname: DIL\vessttk
 Presentation Format: cndlspec
 Dataset Creation: Thu Sep 29 08:52:35 2011
 Charted by: Depth in Feet scaled 1:240

