



SUPERIOR
Hays,
Kansas

**RADIATION GUARD
LOG**

Company PALOMINO PETROLEUM, INC.
Well ATWELL - BENGAY #1
Field WILDCAT
County LANE
State KANSAS

Company PALOMINO PETROLEUM, INC.
Well ATWELL - BENGAY #1
Field WILDCAT
County LANE State KANSAS

Location: API # : 15-101-22308-0000
1915' FNL & 2627' FWL
SEC 25 TWP 17S RGE 27W
Permanent Datum GROUND LEVEL Elevation 2603
Log Measured From KELLY BUSHING 5' A.G.L.
Drilling Measured From KELLY BUSHING
Other Services SP
Elevation K.B. 2608
D.F. 2606
G.L. 2603

| | |
|------------------------------|---------------|
| Date | 9/22/11 |
| Run Number | ONE |
| Depth Driller | 4668 |
| Depth Logger | 4669 |
| Bottom Logged Interval | 4668 |
| Top Log Interval | 00 |
| Casing Driller | 8 5/8"@217' |
| Casing Logger | 218 |
| Bit Size | 7 7/8" |
| Type Fluid in Hole | CHEMICAL MUD |
| Density / Viscosity | 9.5/46 |
| pH / Fluid Loss | 9.5/11.2 |
| Source of Sample | FLOWLINE |
| Rin @ Meas. Temp | .850@77F |
| Rmf @ Meas. Temp | .638@77F |
| Rmc @ Meas. Temp | 1.02@77F |
| Source of Rmf / Rmc | MEASUREMENT |
| Rin @ BHT | .536@122F |
| Time Circulation Stopped | 2.5 HOURS |
| Time Logger on Bottom | 1:45 P.M. |
| Maximum Recorded Temperature | 122F |
| Equipment Number | 0836 |
| Location | HAYS, KANSAS |
| Recorded By | JEFF LUEBBERS |
| Witnessed By | NICK GERSTNER |

<<< Fold Here >>>

All interpretations are opinions based on inferences from electrical or other measurements and we cannot and do not guarantee the accuracy or correctness of any interpretation, and we shall not, except in the case of gross or willful negligence on our part, be liable or responsible for any loss, costs, damages, or expenses incurred or sustained by anyone resulting from any interpretation made by any of our officers, agents or employees. These interpretations are also subject to our general terms and conditions set out in our current Price Schedule.

Comments

THANK YOU FOR USING SUPERIOR WELL SERVICE HAYS, KANSAS (785) 628-6395
DIRECTIONS
ALAMOTA, KS. & HWY 96, "MM #95", 5N. PAST CURVE & 2 CATTLE GUARDS TO TANK BATTERY,
4E.@CATTLE GUARD ON MAIN TRAIL, PAST ANOTHER TANK BATTERY, CONTINUE ON RIGHT TRAIL



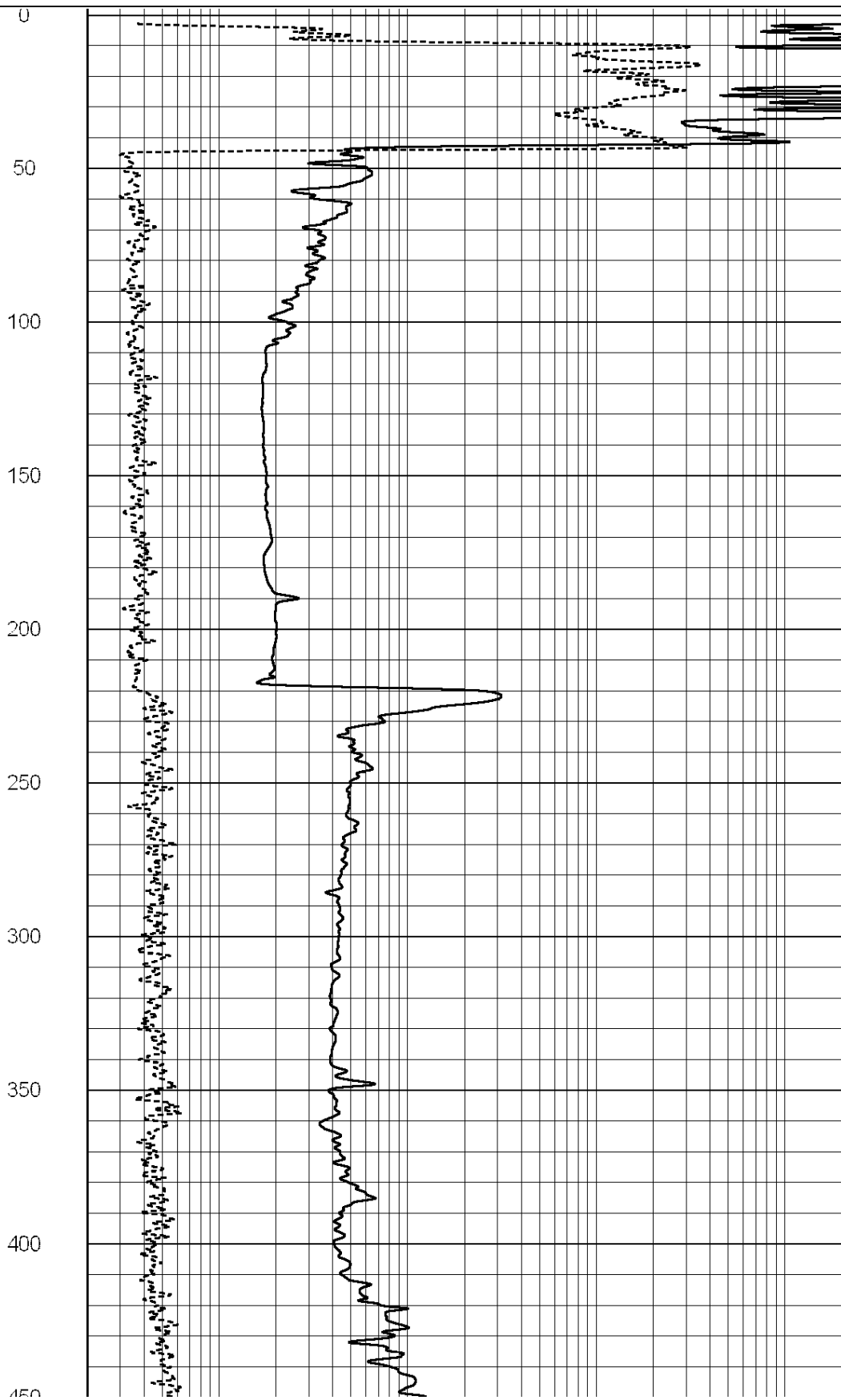
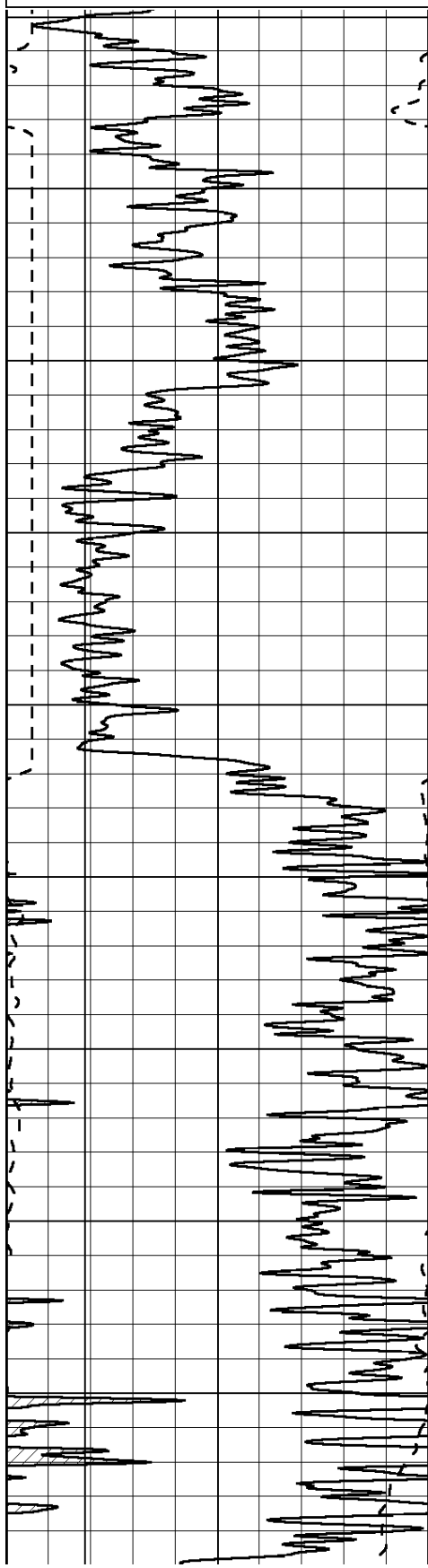
SUPERIOR
Hays,
Kansas

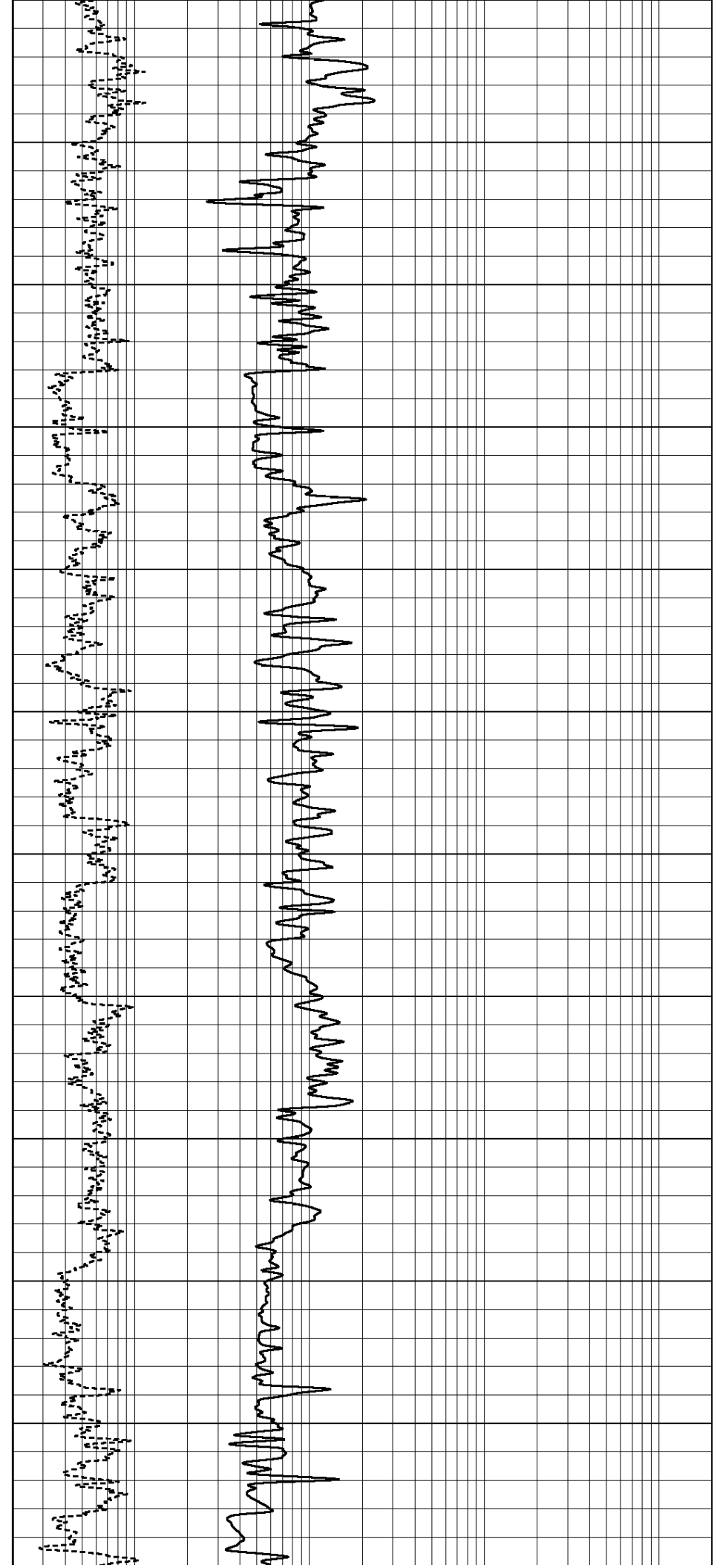
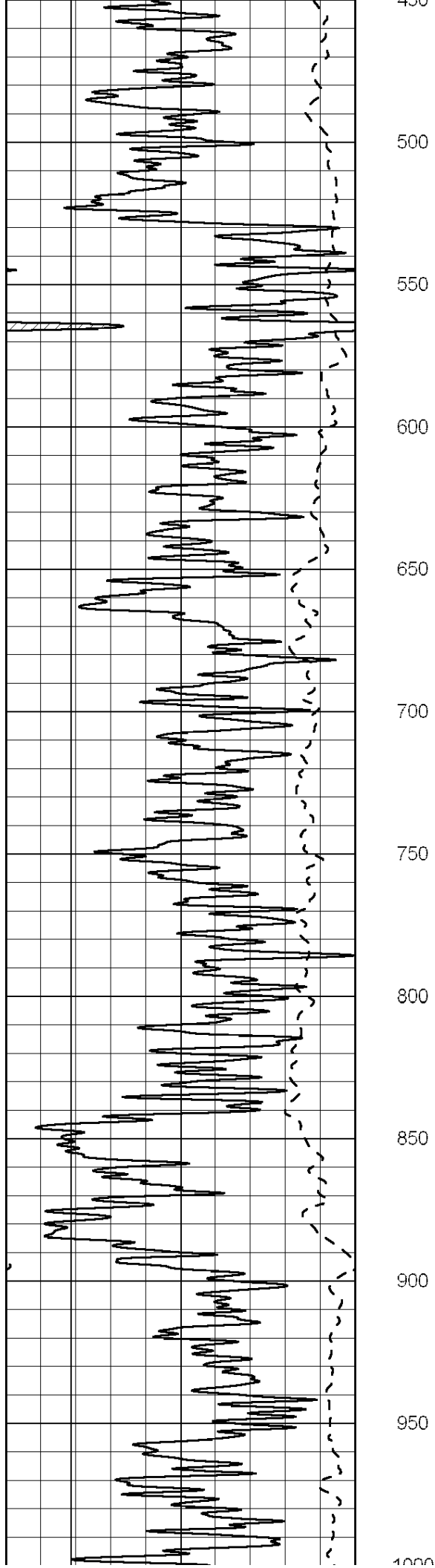
MAIN SECTION

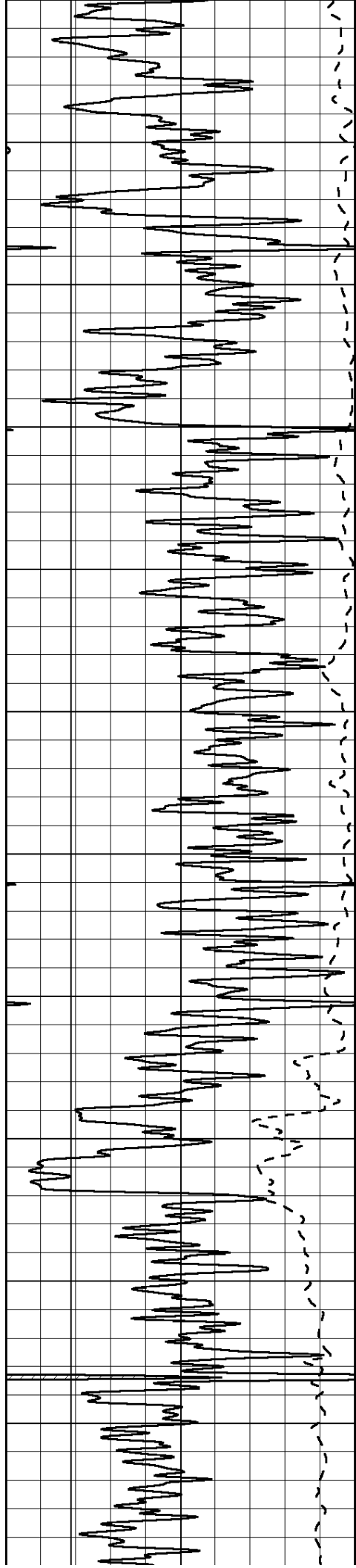
Database File: 006595rag.db
Dataset Pathname: pass3.9
Presentation Format: rag2inch
Dataset Creation: Thu Sep 22 15:00:57 2011 by Calc Open-Cased 090629
Charted by: Depth in Feet scaled 1:600

0 GAMMA RAY (GAPI) 150
-100 SP (mV) 100

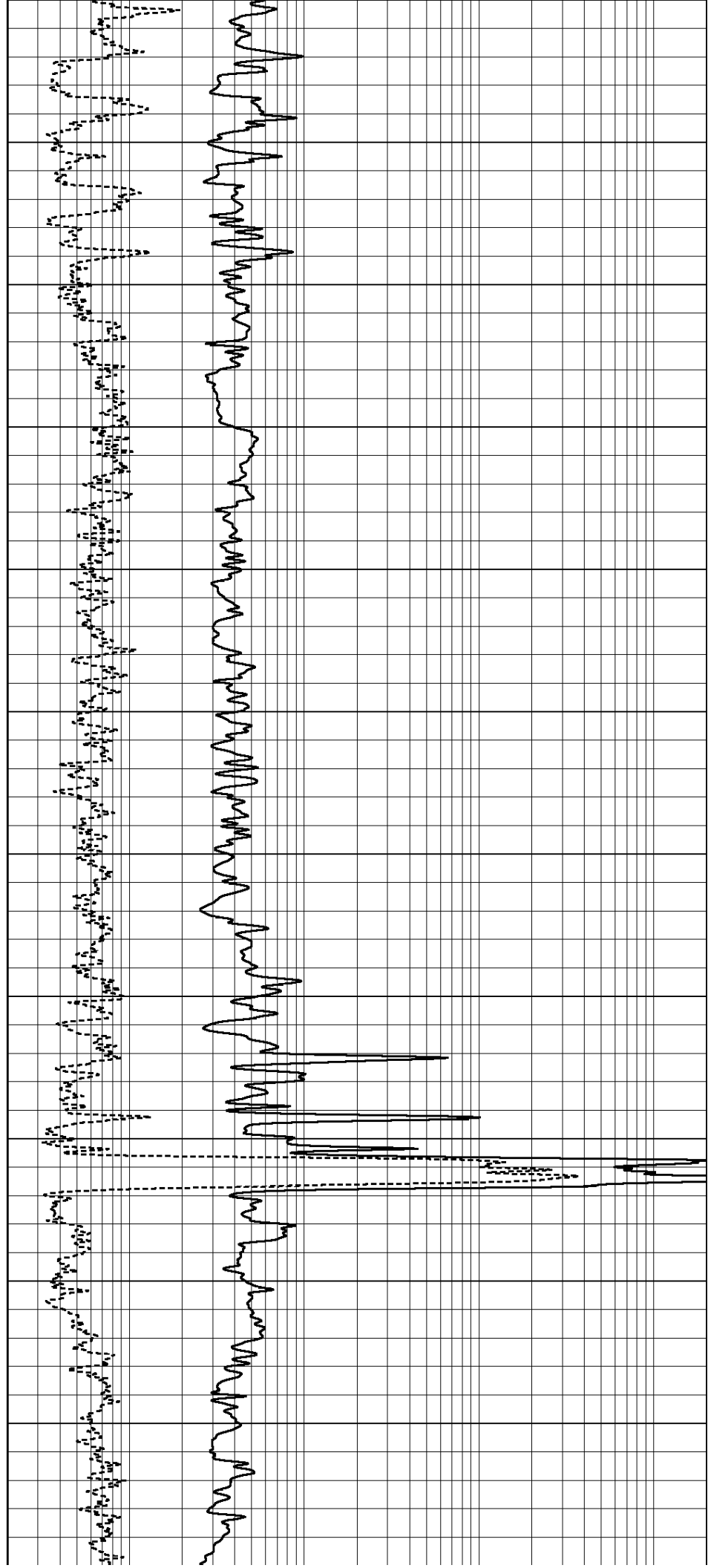
0.2 GUARD (Ohm-m) 2000
0 NEUTRON (NAPI) 1000

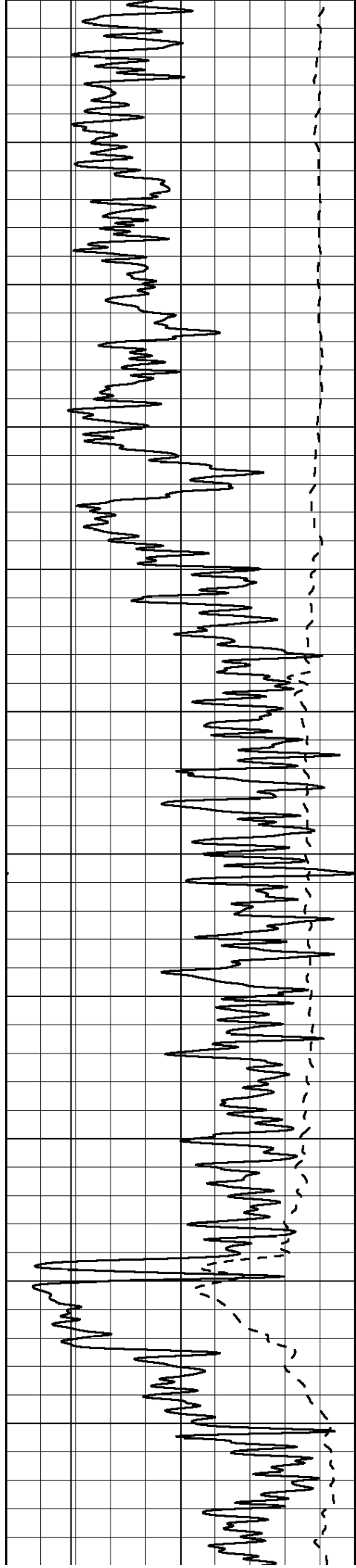




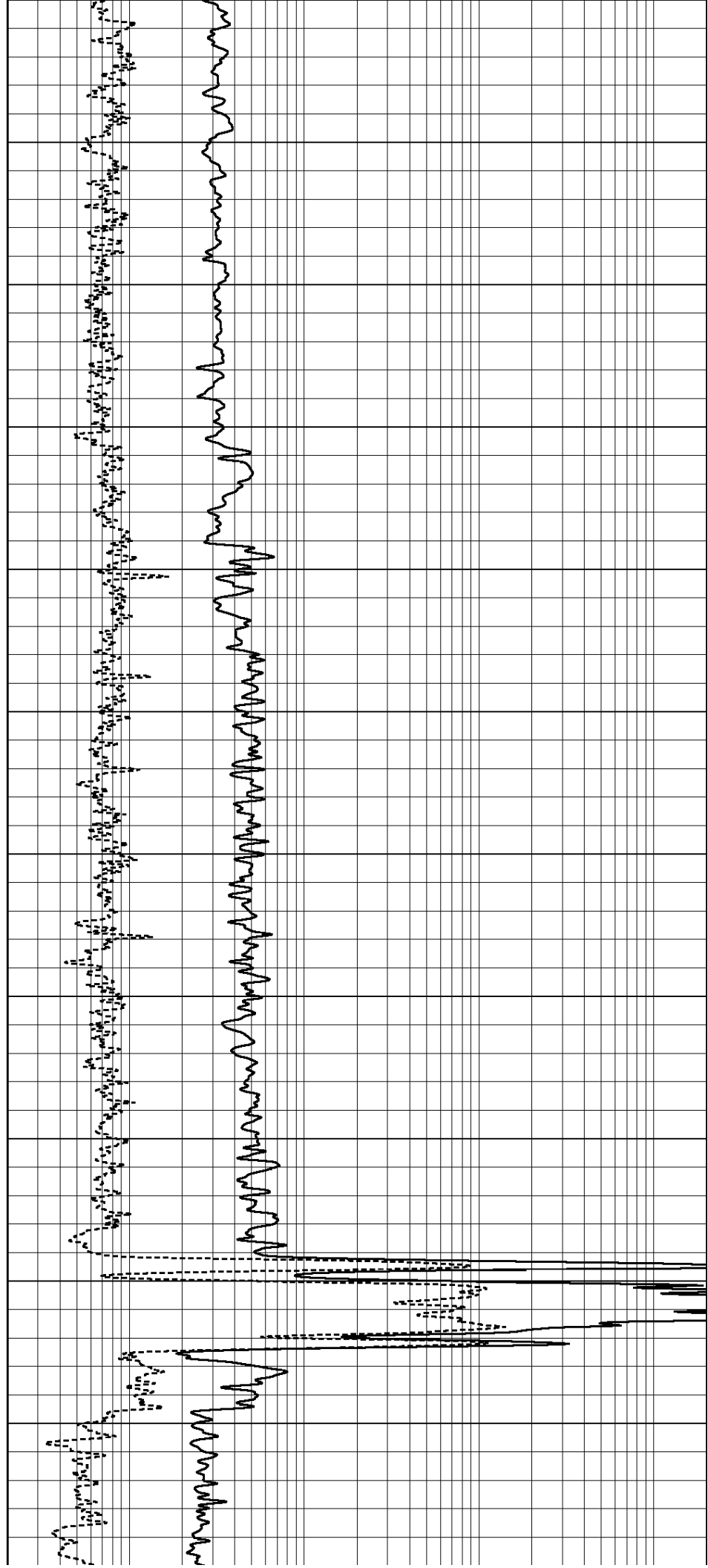


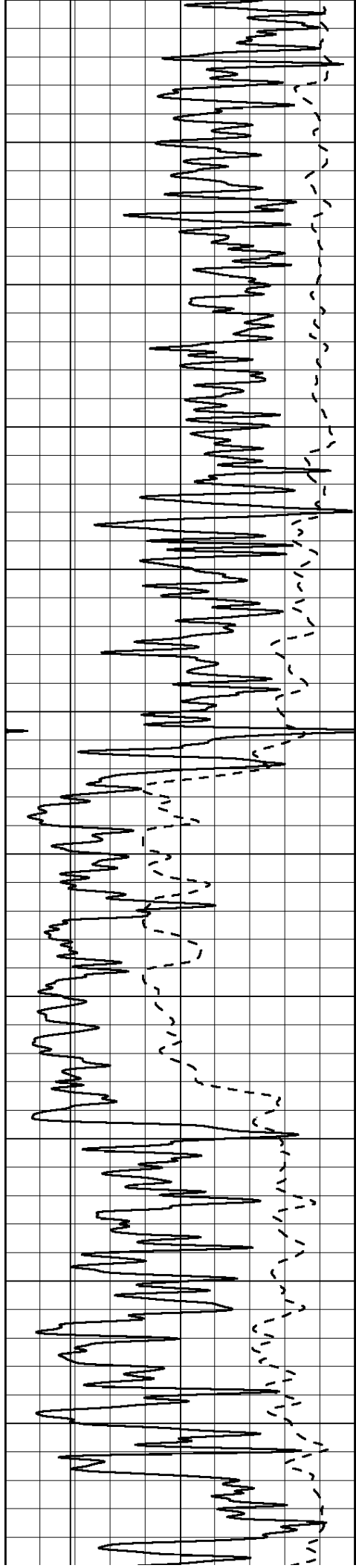
1000
1050
1100
1150
1200
1250
1300
1350
1400
1450
1500
1550



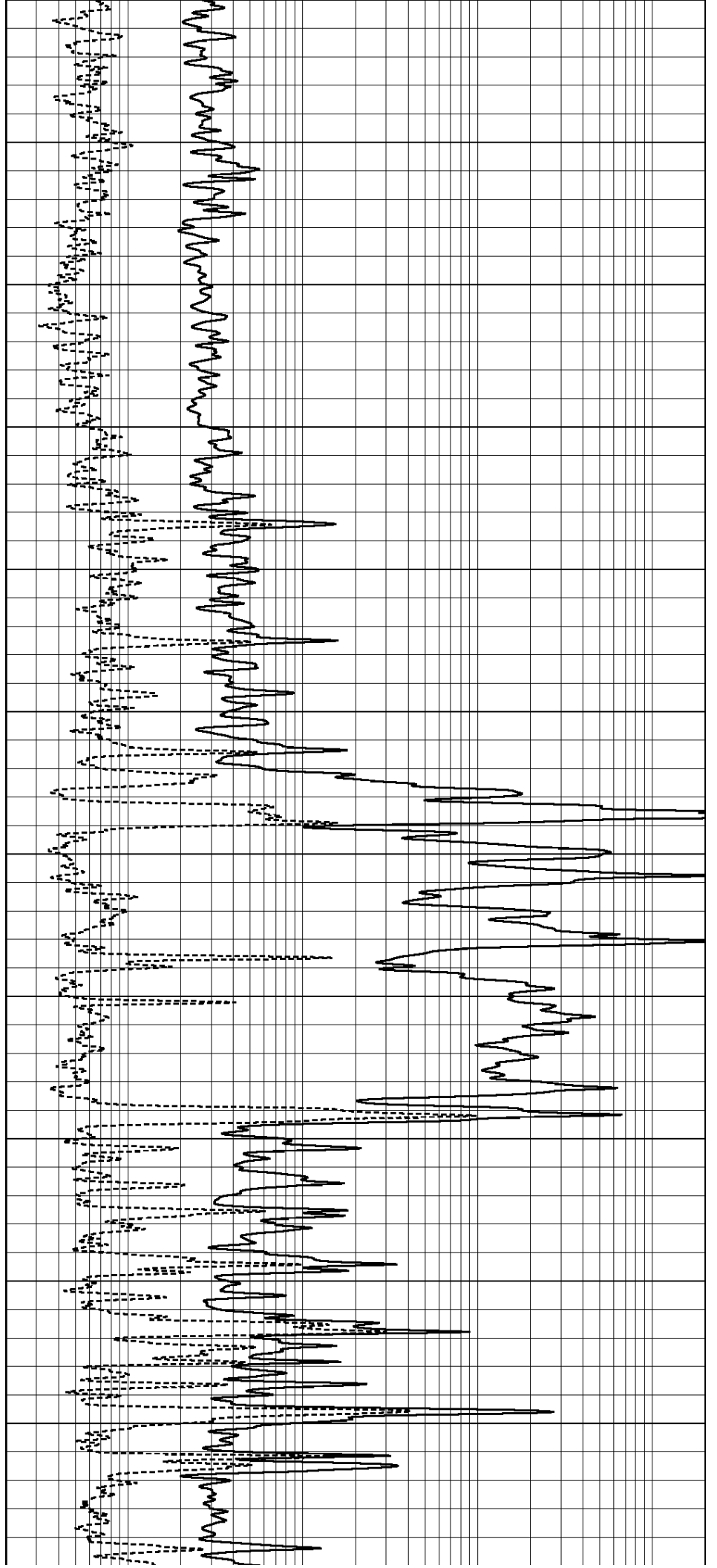


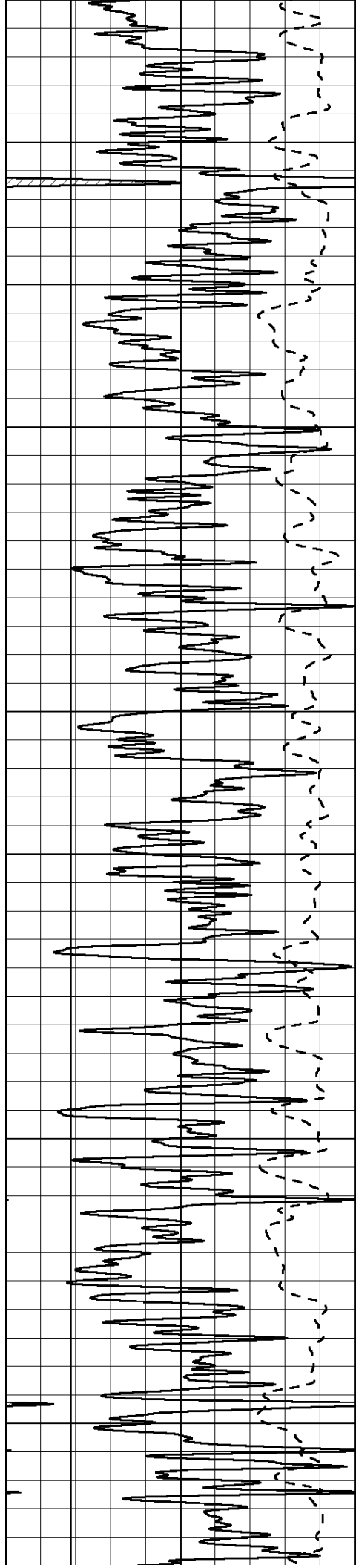
1500
1600
1650
1700
1750
1800
1850
1900
1950
2000
2050
2100



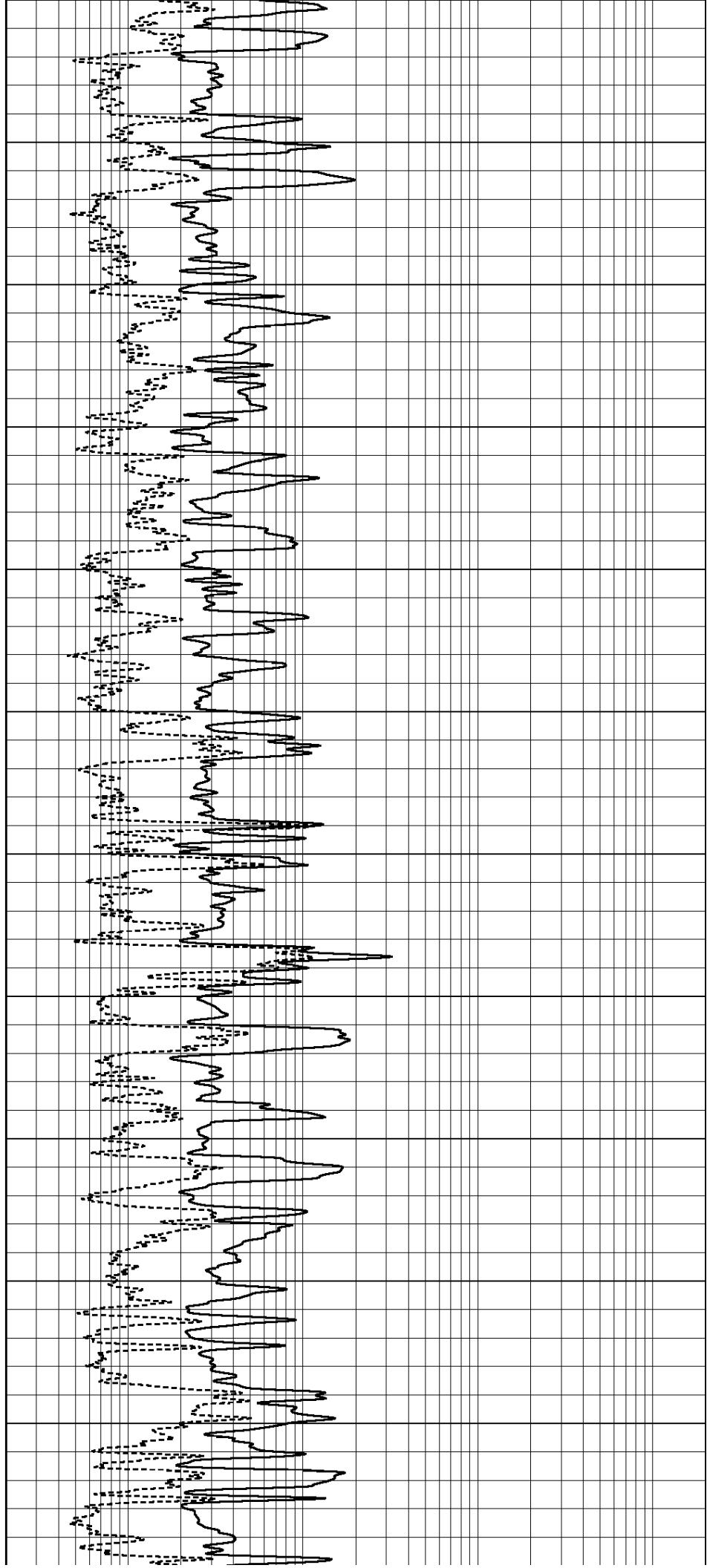


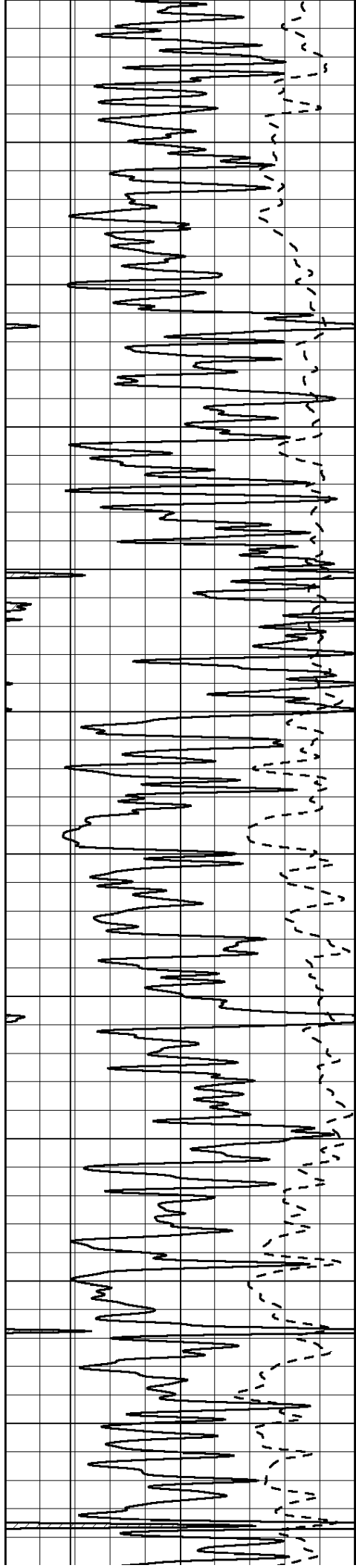
2100
2150
2200
2250
2300
2350
2400
2450
2500
2550
2600
2650



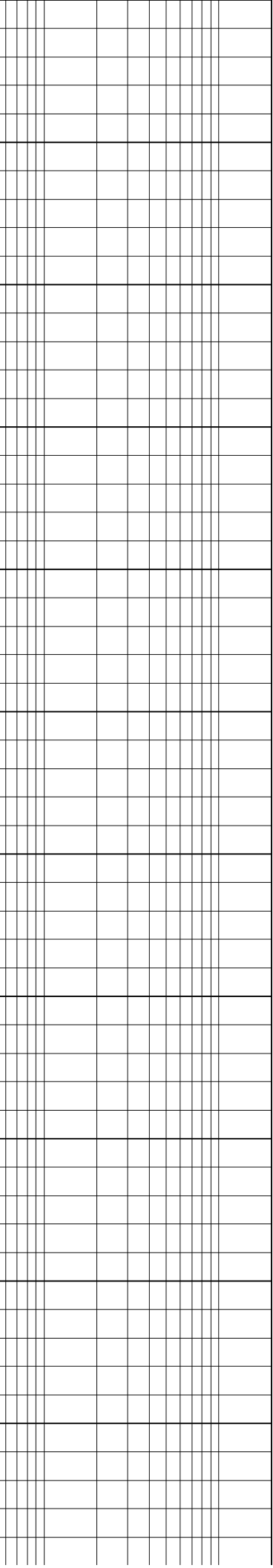
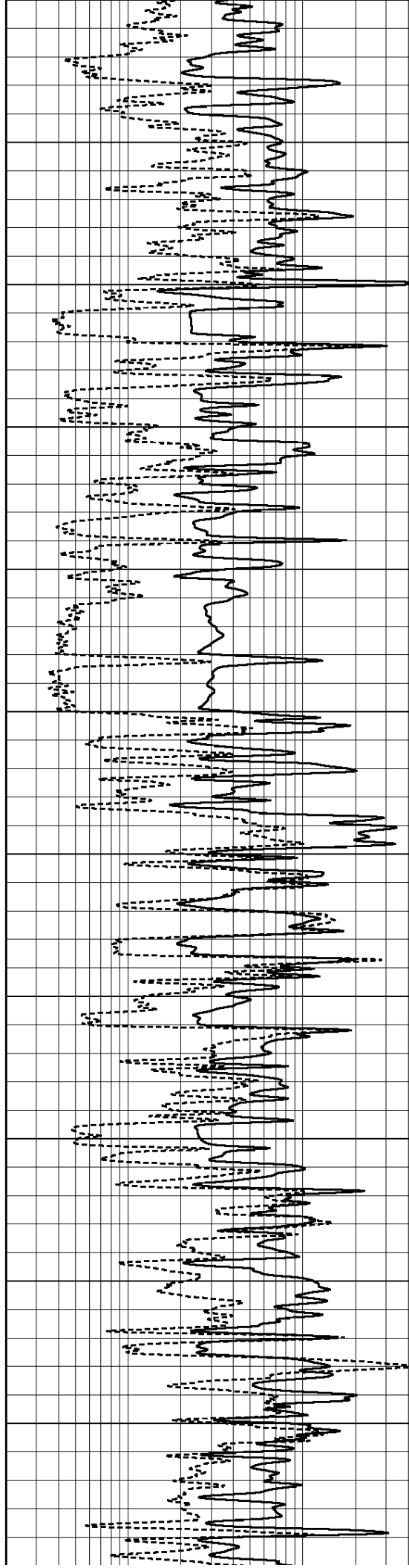


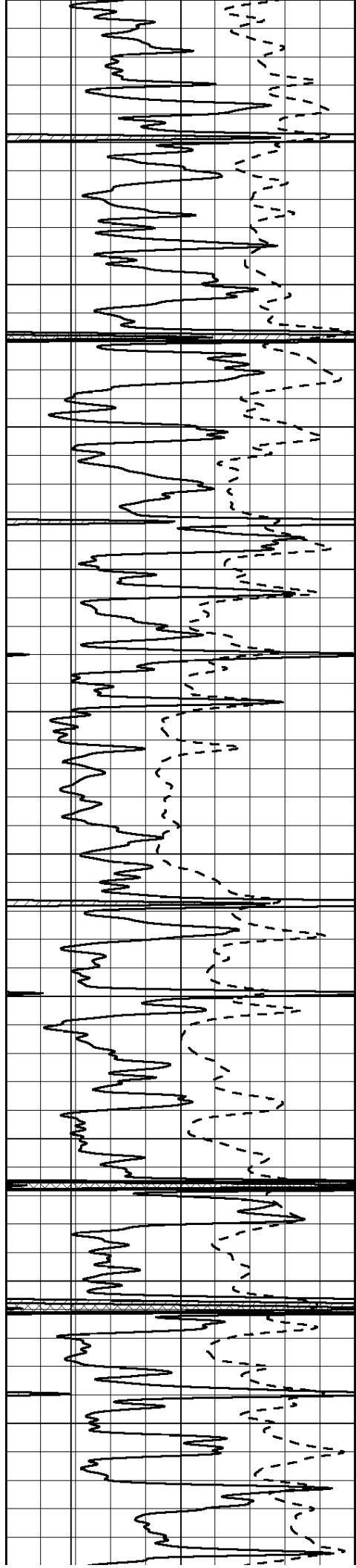
2650
2700
2750
2800
2850
2900
2950
3000
3050
3100
3150
3200



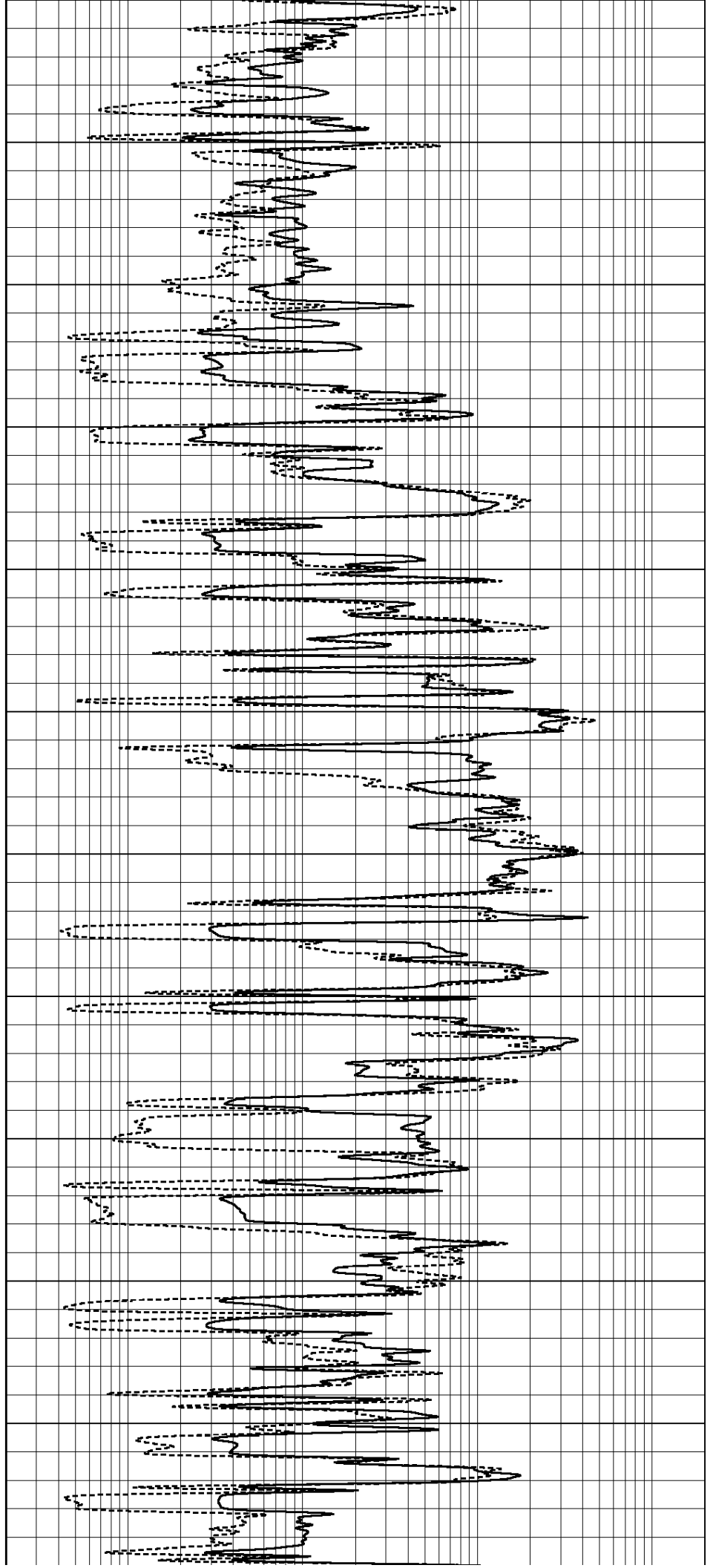


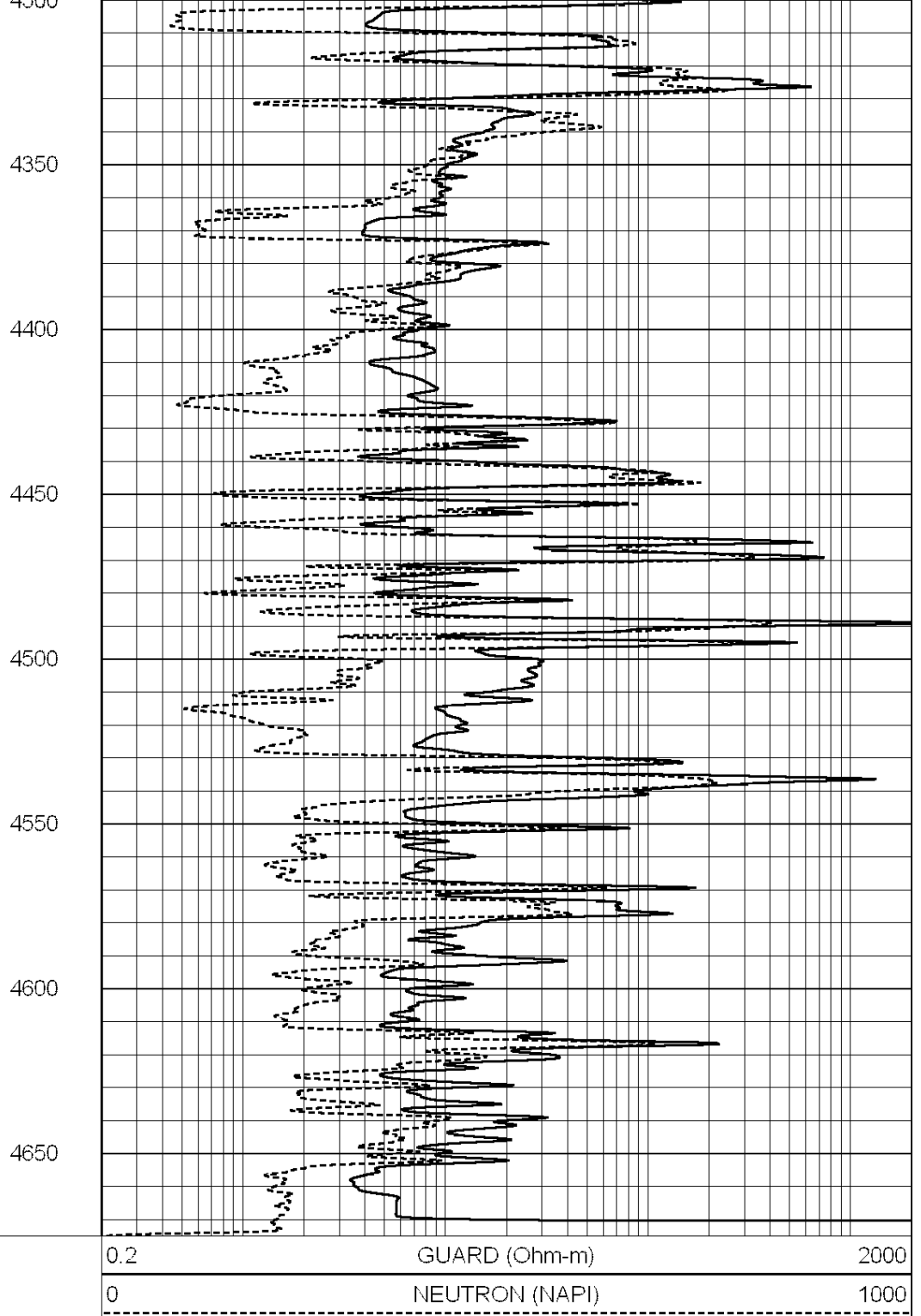
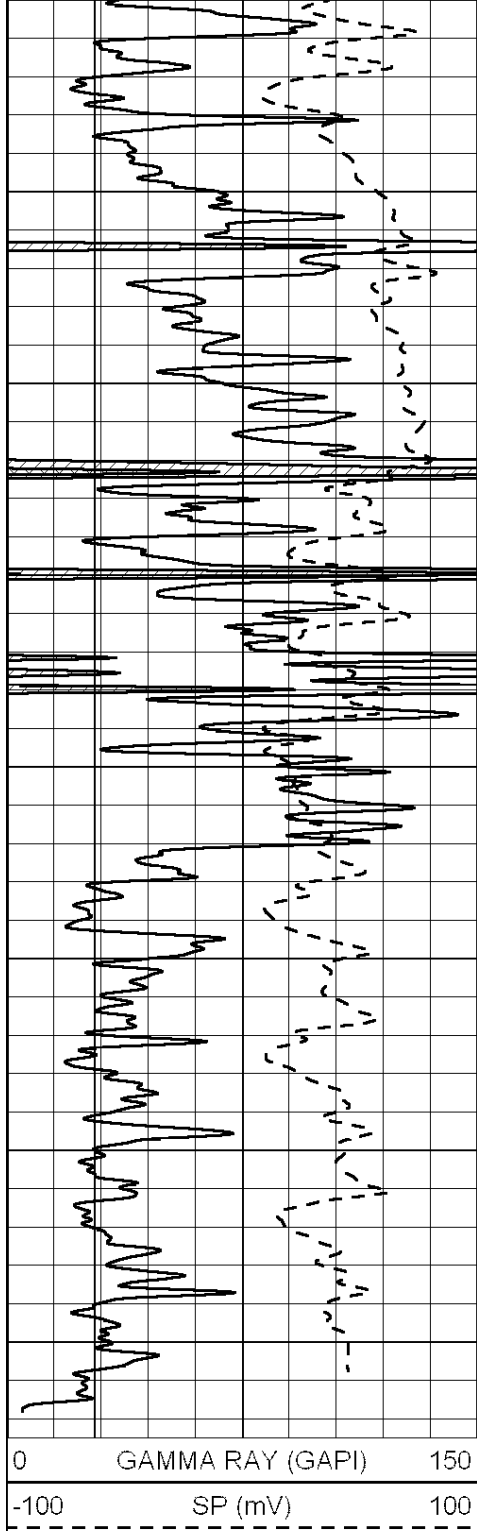
3200
3250
3300
3350
3400
3450
3500
3550
3600
3650
3700
3750





3750
3800
3850
3900
3950
4000
4050
4100
4150
4200
4250
4300

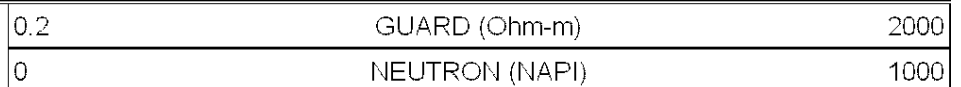
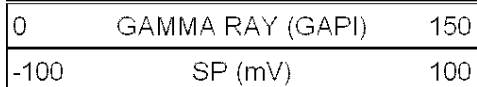


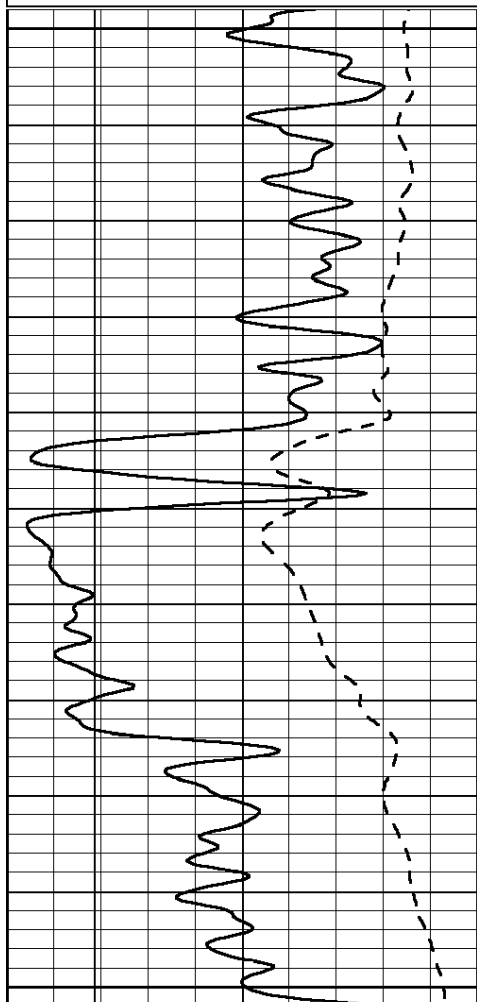


SUPERIOR
Hays,
Kansas

ANHYDRITE

Database File: 006595rag.db
 Dataset Pathname: pass3.7
 Presentation Format: rag2inch
 Dataset Creation: Thu Sep 22 14:47:36 2011 by Calc Open-Cased 090629
 Charted by: Depth in Feet scaled 1:240



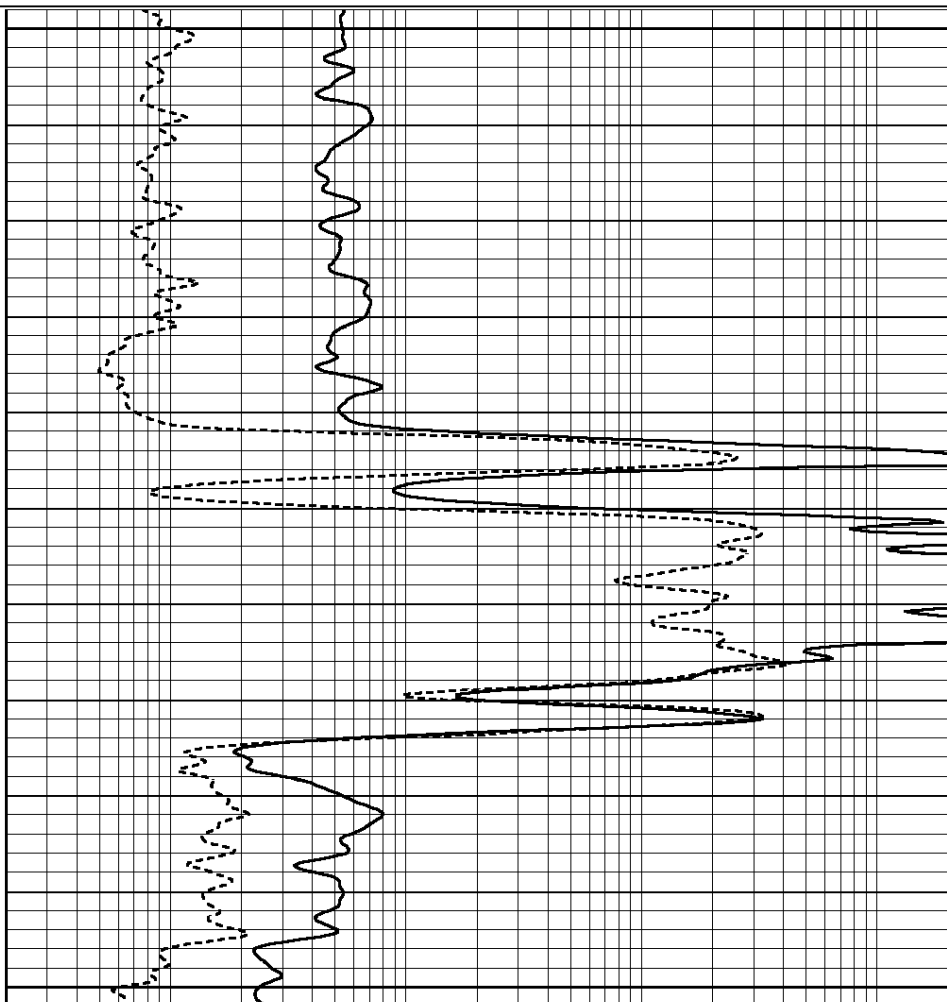


1950

2000

2050

0 GAMMA RAY (GAPI) 150
 -100 SP (mV) 100



0.2 GUARD (Ohm-m) 2000
 0 NEUTRON (NAPI) 1000



SUPERIOR
 Hays,
 Kansas

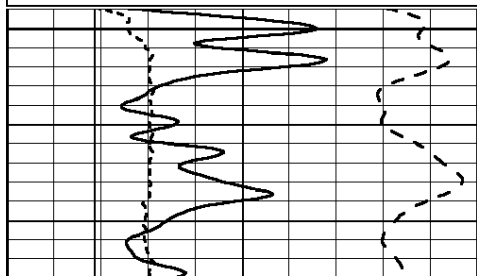
MAIN SECTION

Database File: 006595rag.db
 Dataset Pathname: pass3.4
 Presentation Format: rag
 Dataset Creation: Thu Sep 22 14:35:33 2011 by Calc Open-Cased 090629
 Charted by: Depth in Feet scaled 1:240

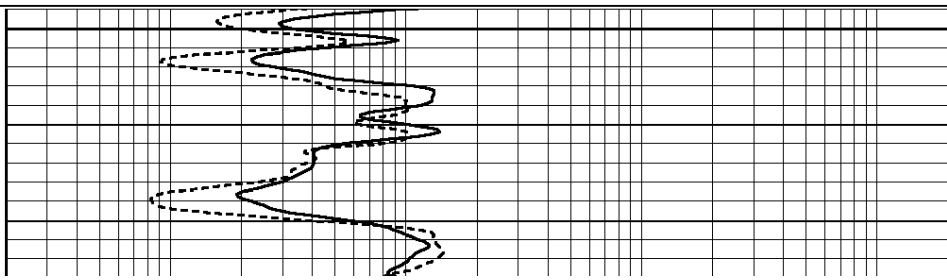
0 GAMMA RAY (GAPI) 150
 -100 SP (mV) 100
 6 CALIPER (in) 16

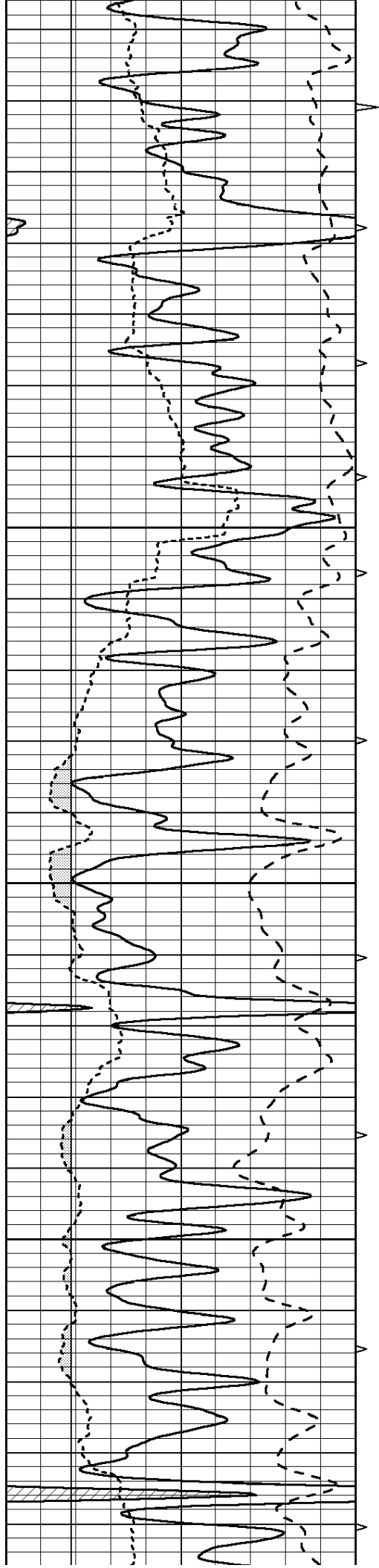
ABHV
 10 (ft3) 0
 TBHV
 0 (ft3) 10

0.2 GUARD (Ohm-m) 2000
 0 NEUTRON (NAPI) 1000



3500



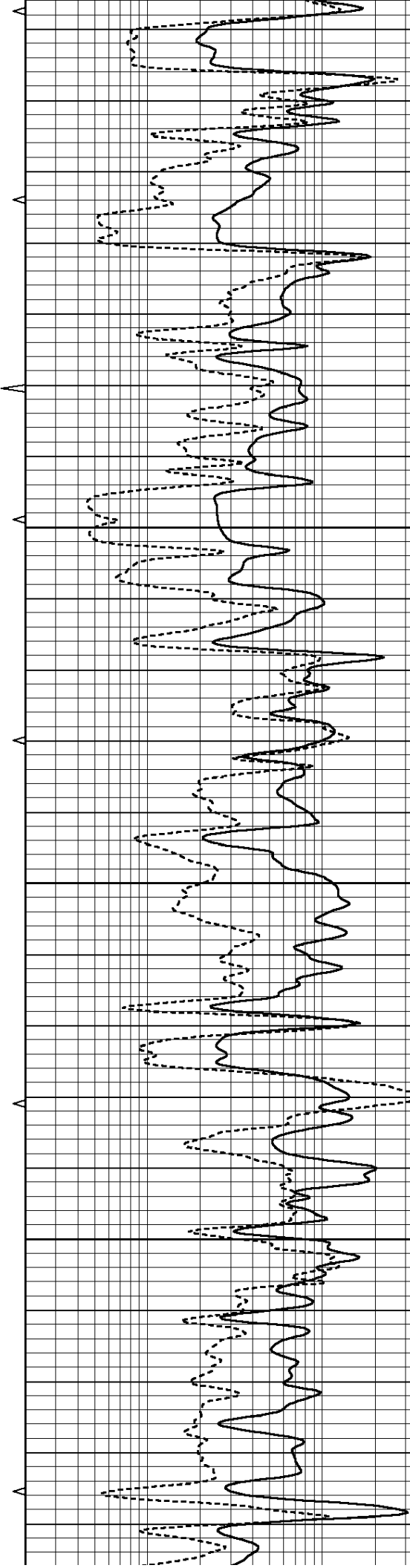


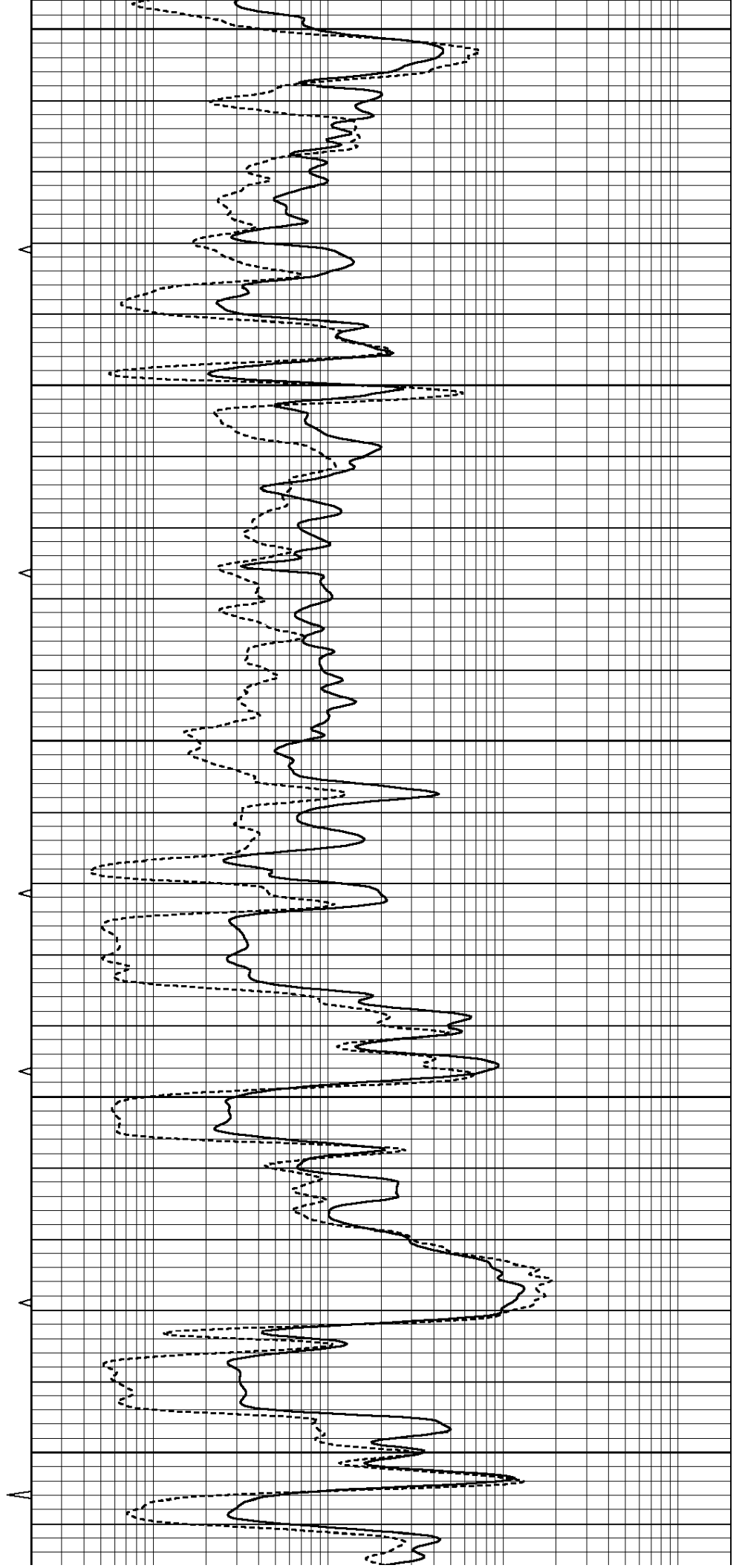
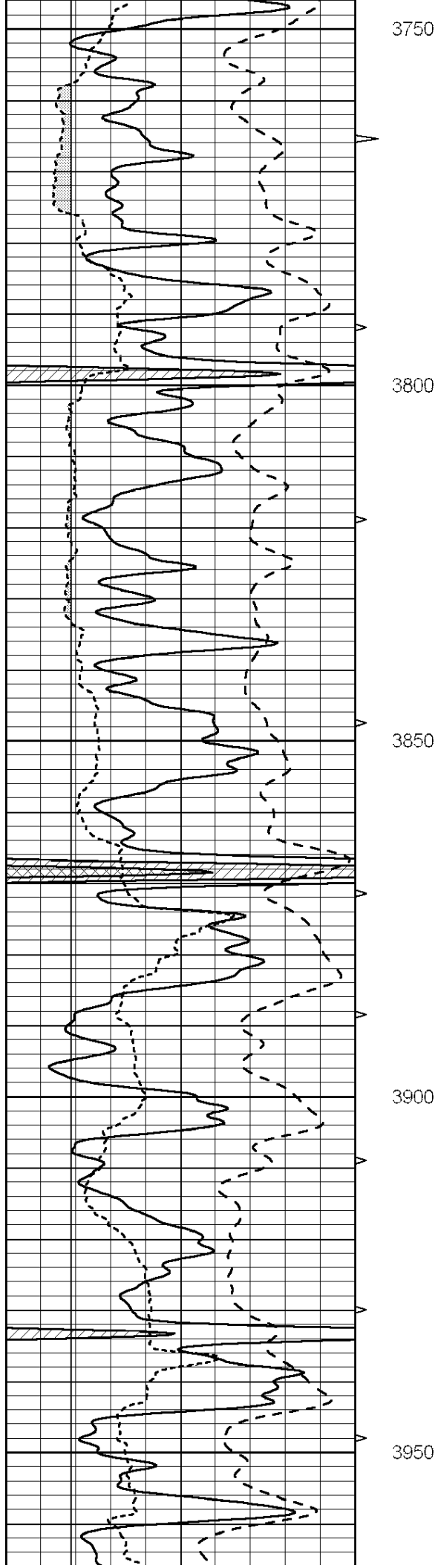
3550

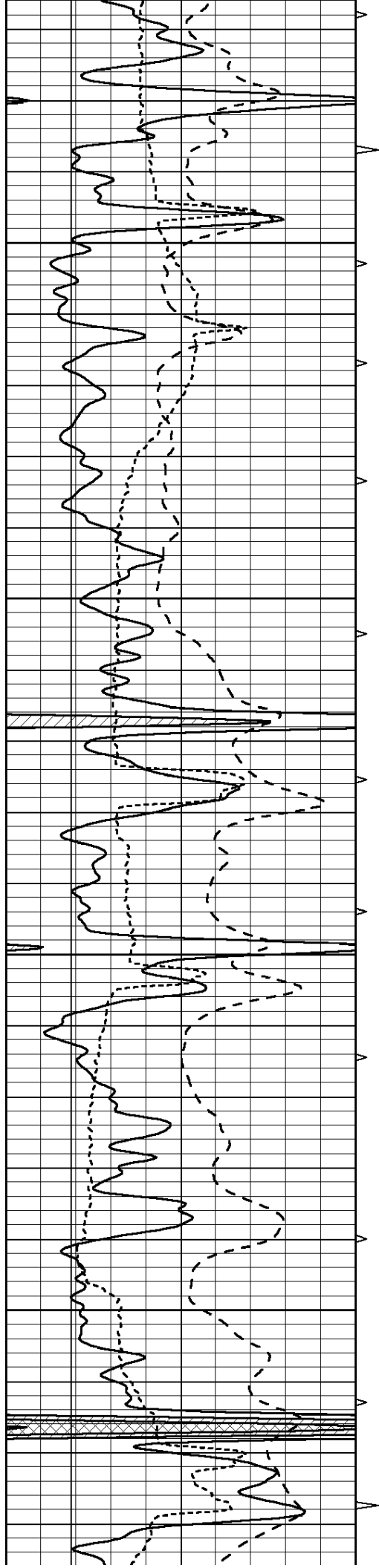
3600

3650

3700





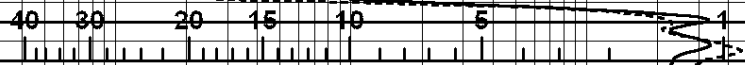


4000

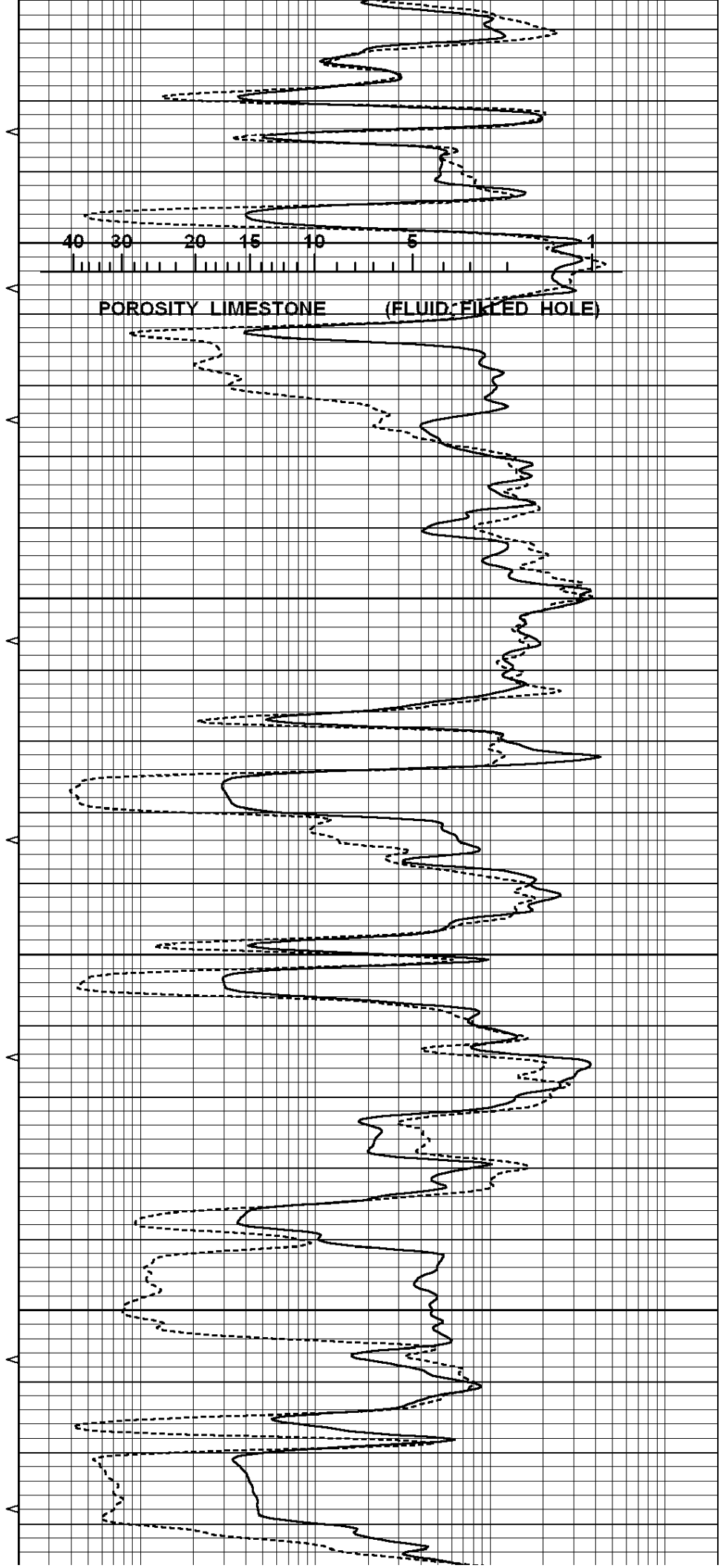
4050

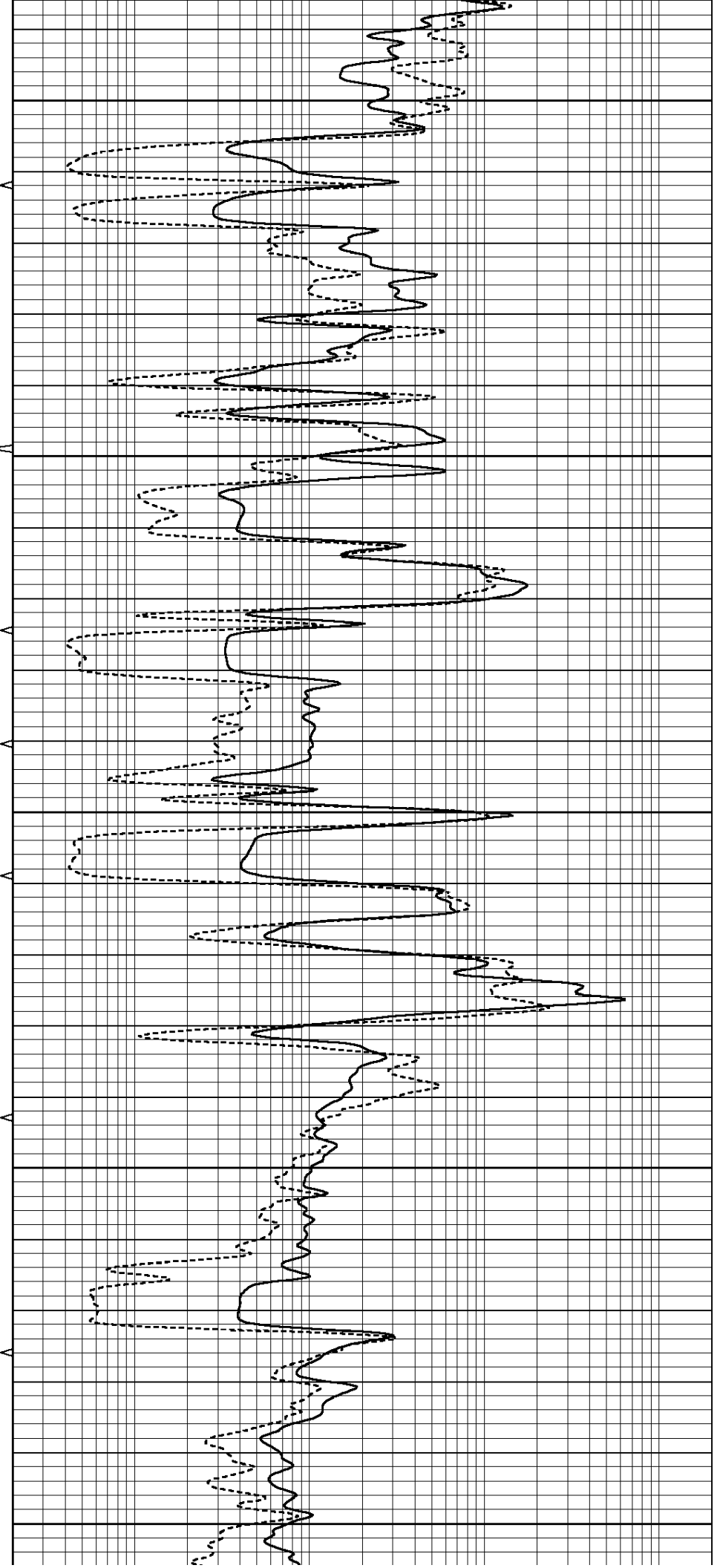
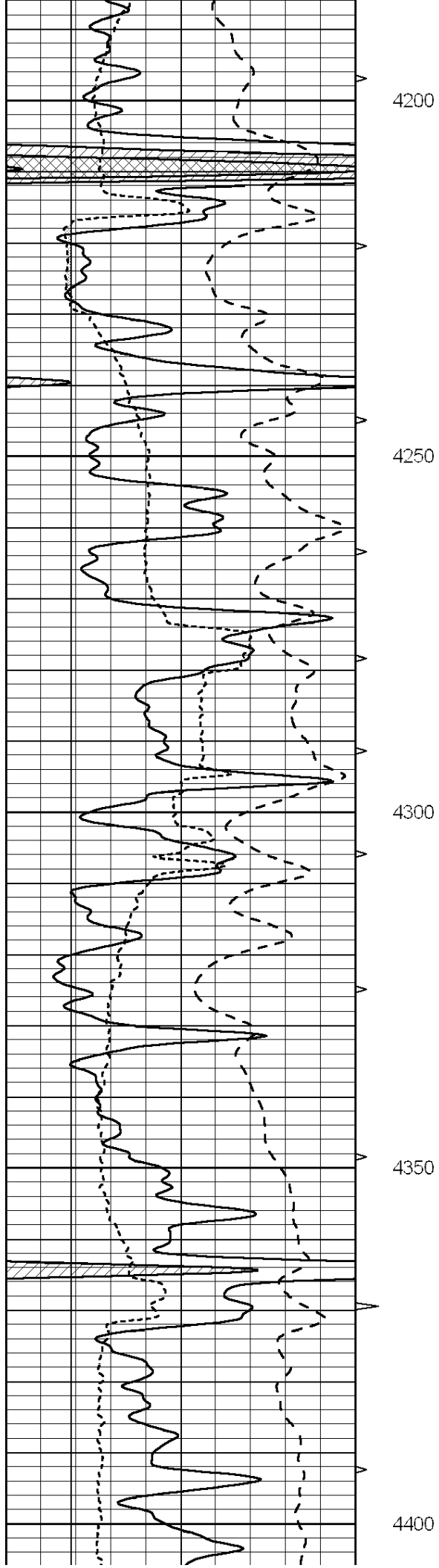
4100

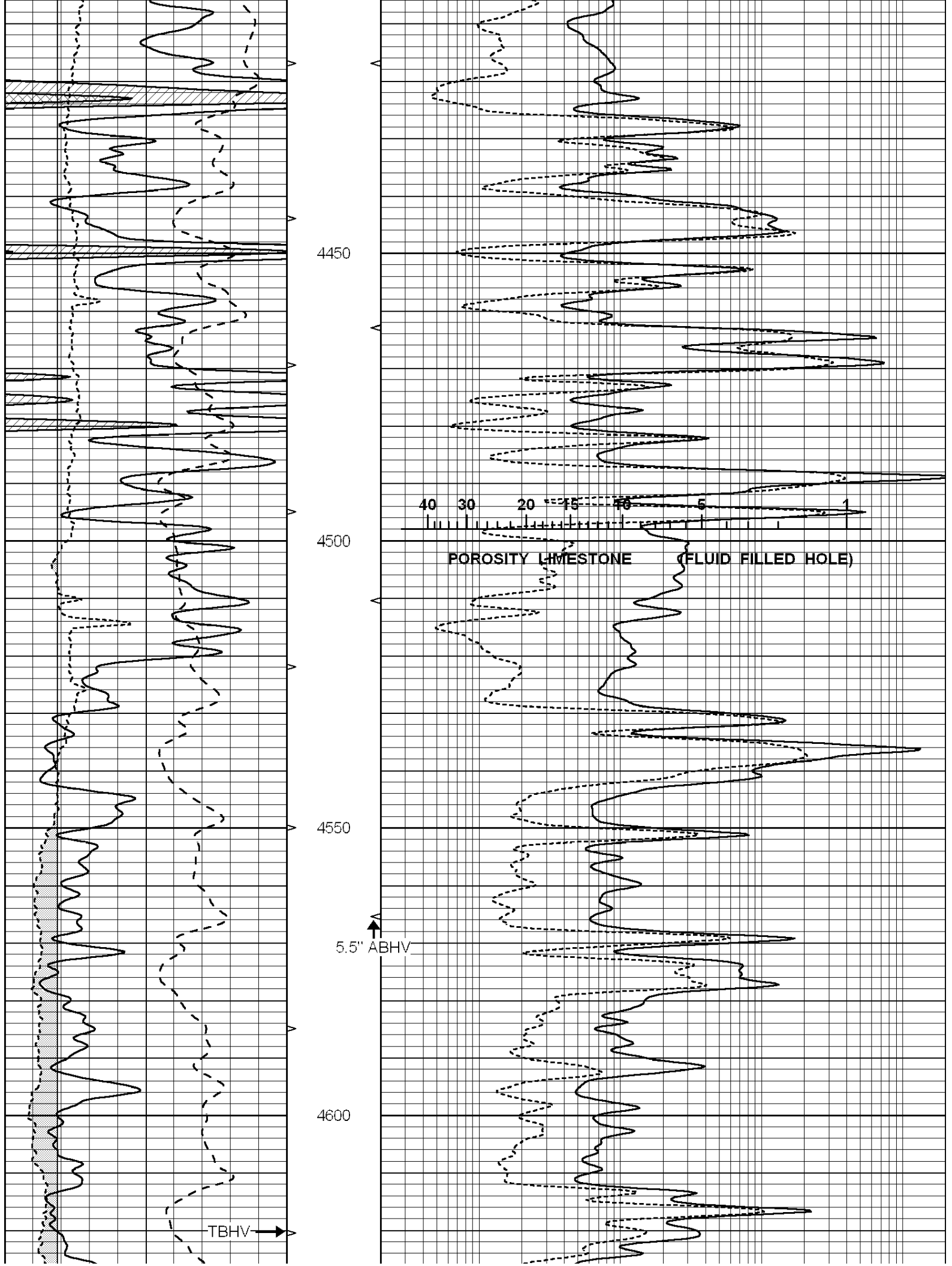
4150

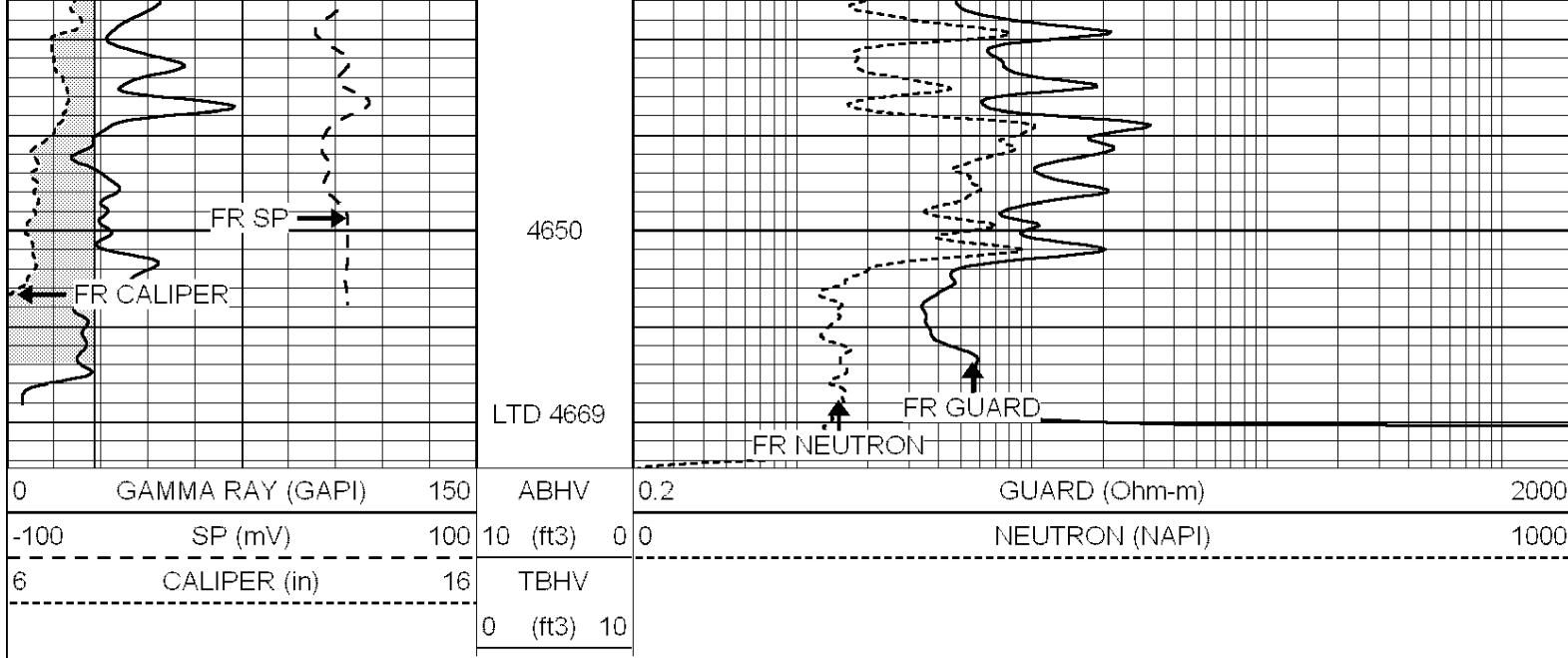


POROSITY LIMESTONE (FLUID FILLED HOLE)









SUPERIOR
Hays,
Kansas

REPEAT SECTION

Database File: 006595rag.db
 Dataset Pathname: pass2.12
 Presentation Format: rag
 Dataset Creation: Thu Sep 22 14:28:11 2011 by Calc Open-Cased 090629
 Charted by: Depth in Feet scaled 1:240

