

Company ALTON OIL LLC.

Well STEFFEN UNIT # 3

Field POSEY NE

Country U.S.A.

State/Prv KANSAS

Location

N/2-N/2-N/2-NE

SEC. 16 TWP. 33S RGE. 4E

COWLEY COUNTY

Other Services

Permanent Datum GROUND LEVEL Elevation 1197

Log Measured From KELLY BUSHING 8' A.G.L.

Drilling Measured From KELLY BUSHING

Elevation
K.B. 1205

G.L. 1197

Company ALTON OIL LLC.
Well STEFFAN UNIT # 3
Field POSEY NE
Country U.S.A.
State/Prv KANSAS

Date 09-24-13

Run Number ONE

Depth Driller 3410

Depth Logger 3373

Bottom Logged Interval 3372

Top Log Interval 1950

Open Hole Size WATER-FULL

Type Fluid

Density / Viscosity

Max. Well Deviation

Estimated Cement Top 2026

Time Well Ready

Time Logger on Bottom

Equipment Number 103

Location ELDORADO

Recorded By SULLIVAN

Witnessed By PRESSNAL

Run Number

Bit

From

To

Size

Weight

FROM

TO

Surface String

Prot. String

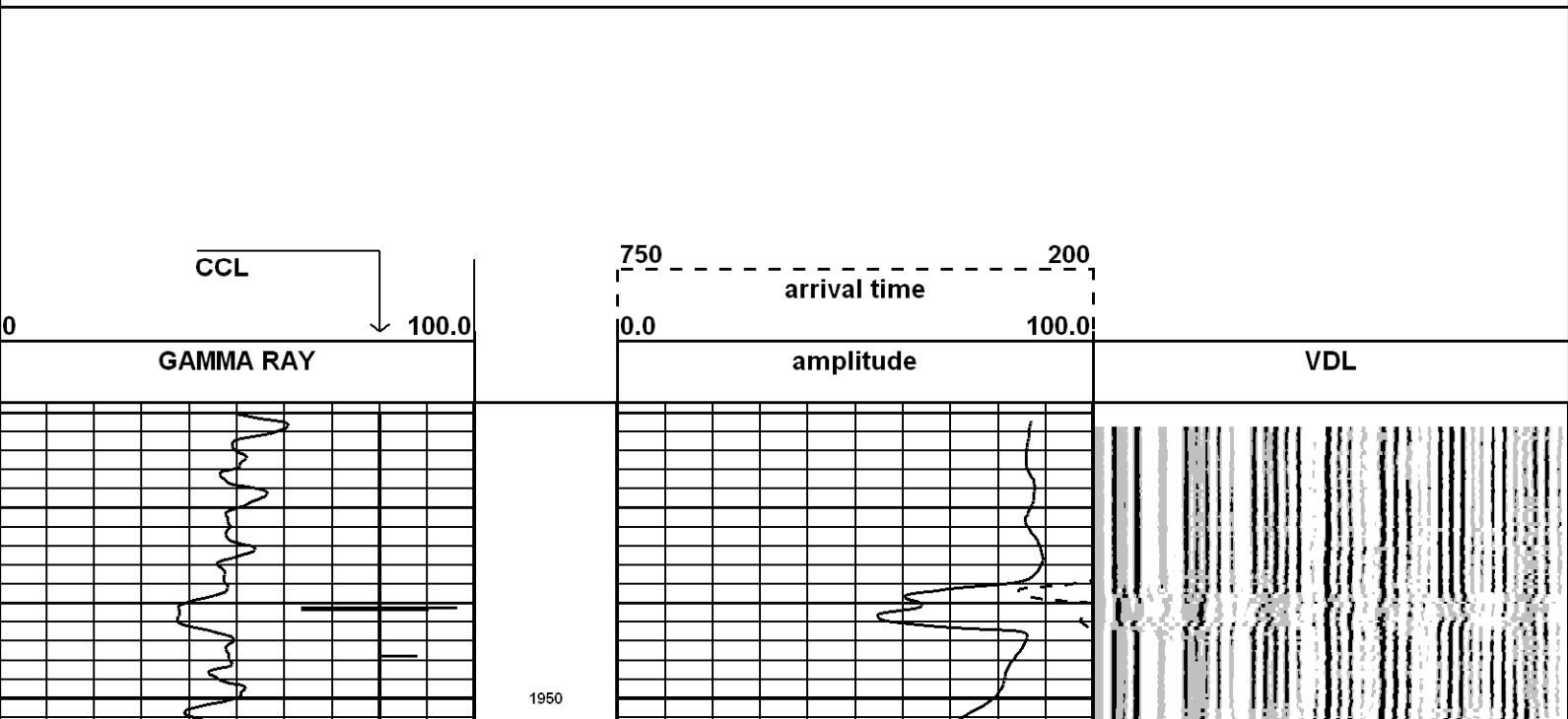
Production String 5 1/2 15.5 0 3387

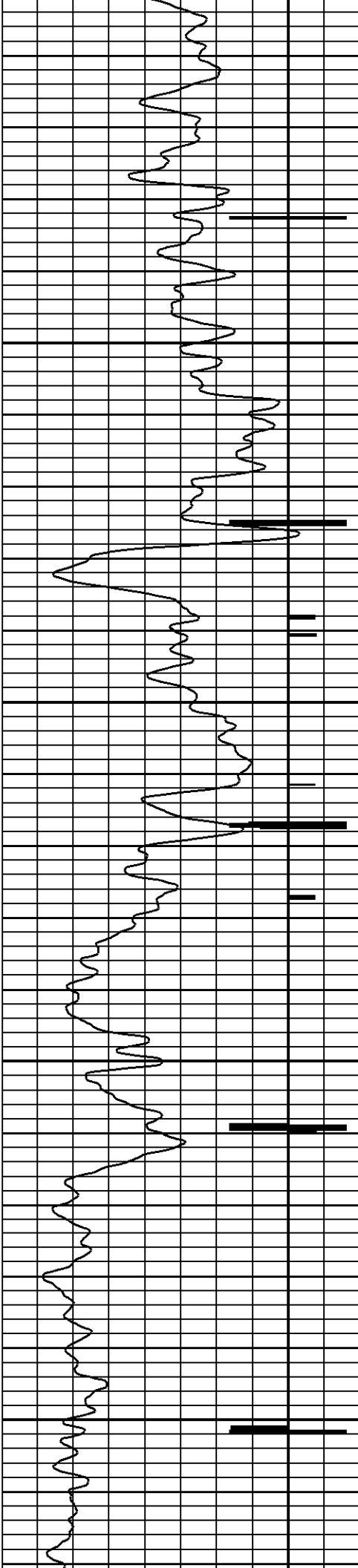
Liner

START: 3368.25ft
STOP: 1873.00ft
RES: 0.25ft
SCALE: 5"/100'

SONIC BOND

RUN: SONIC BOND
DIR: UP
DATE: 09/24/13
TIME: 11:21:48



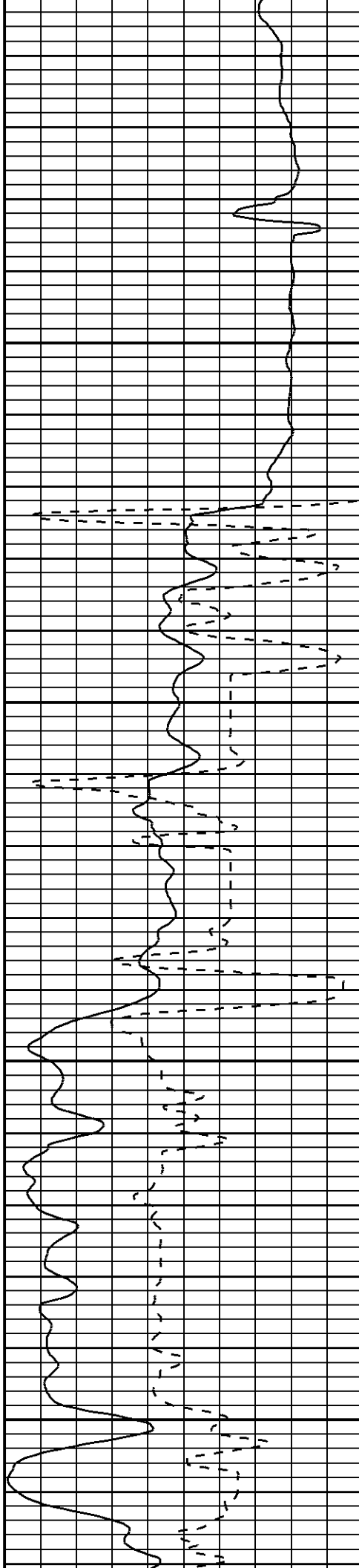


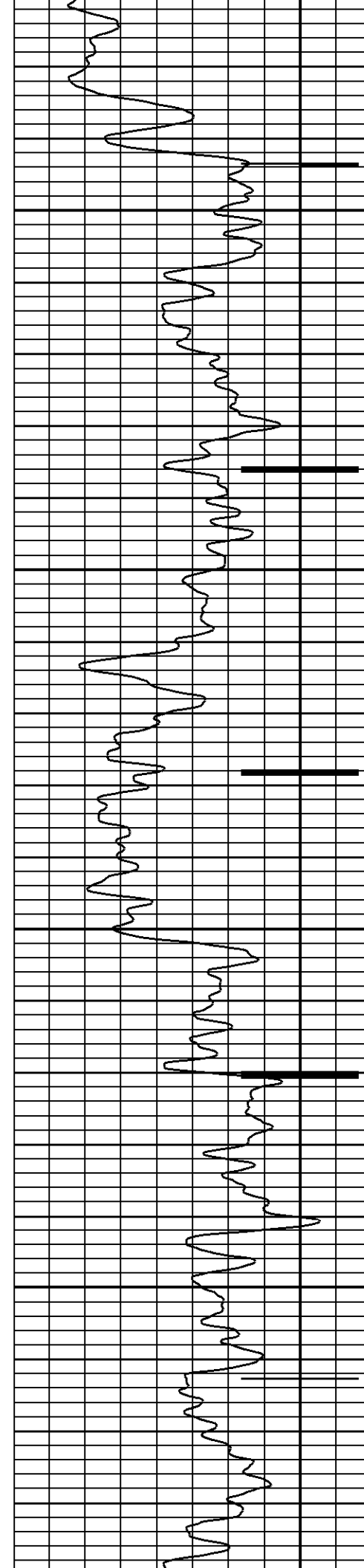
2000

2050

2100

2150



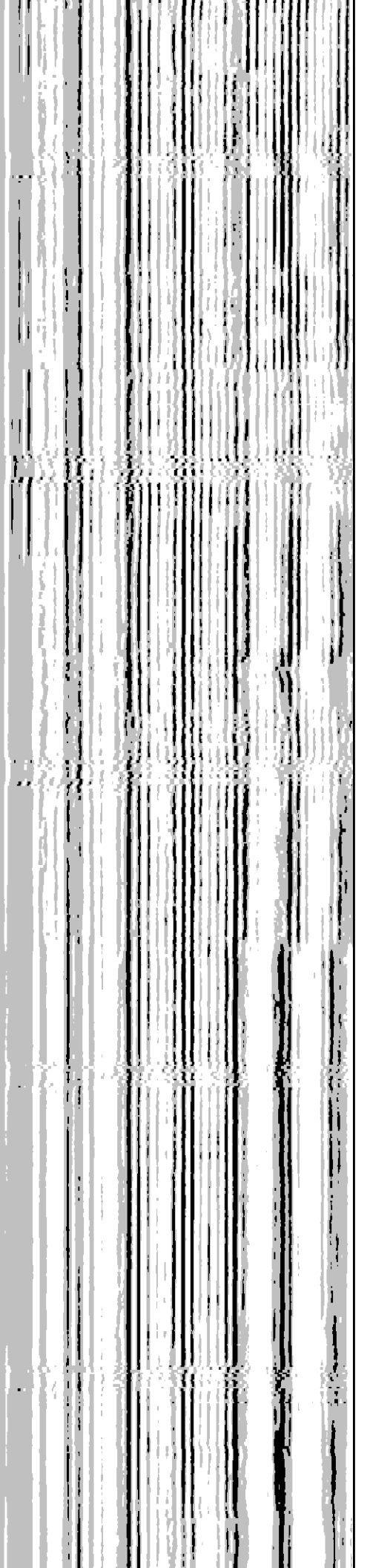
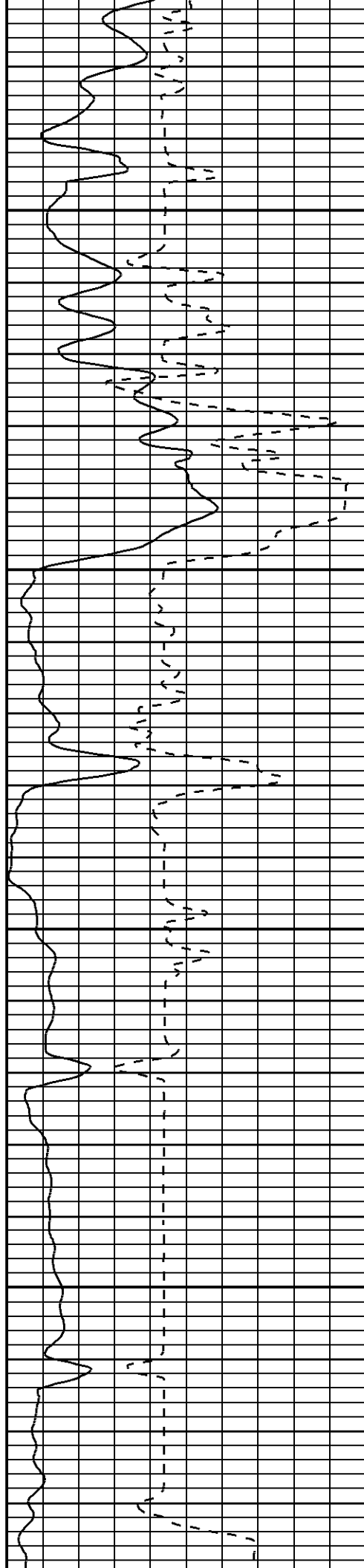


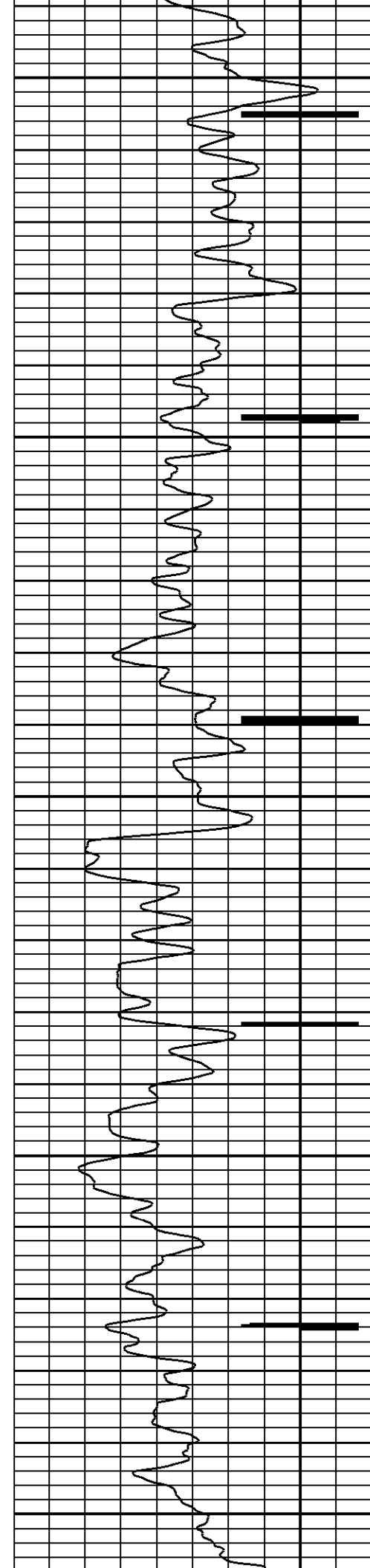
2200

2250

2300

2350





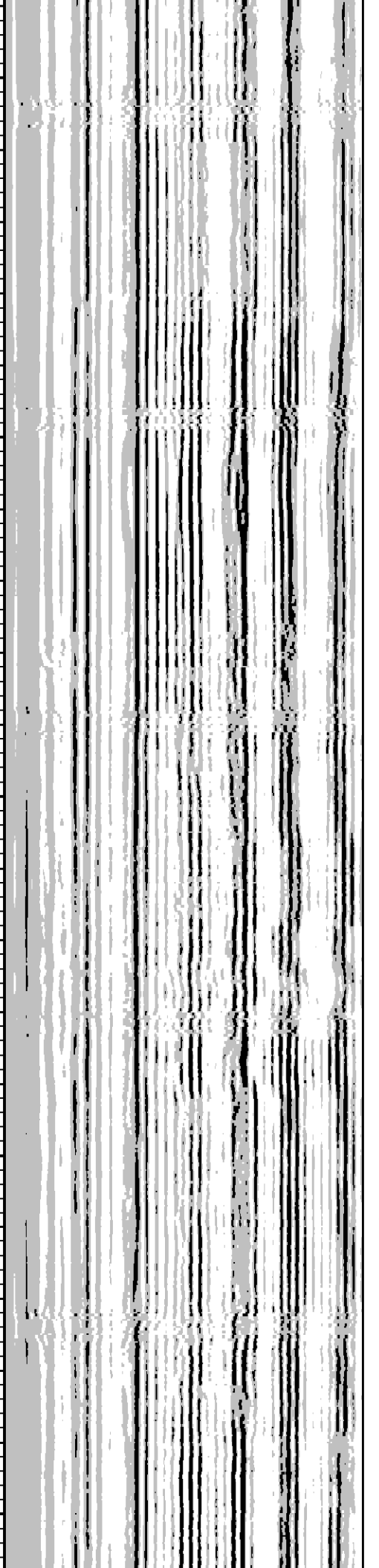
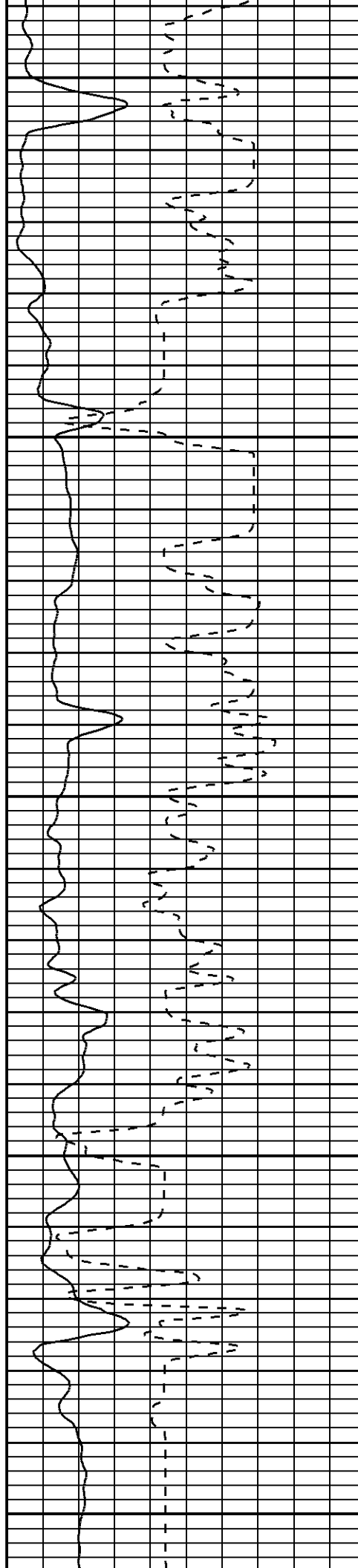
2400

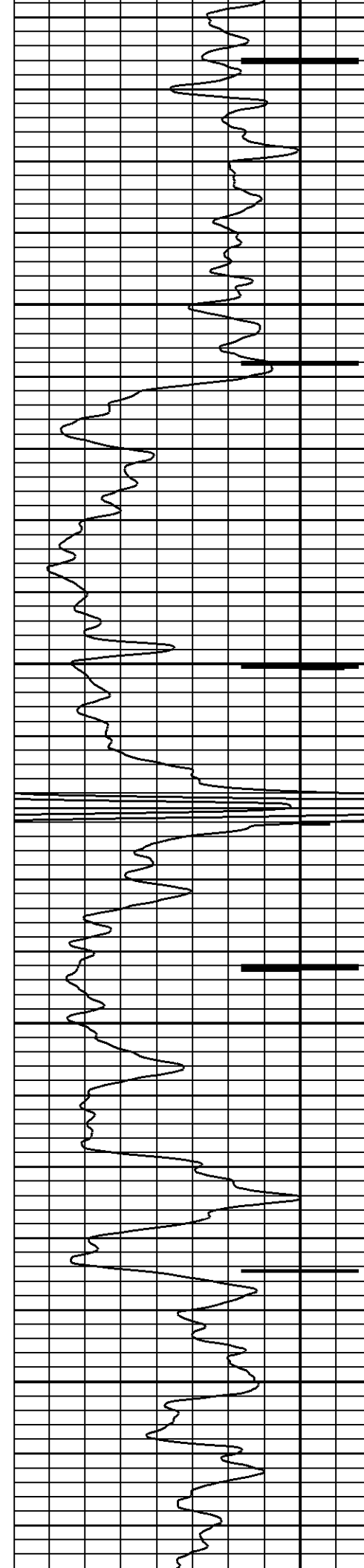
2450

2500

2550

2600



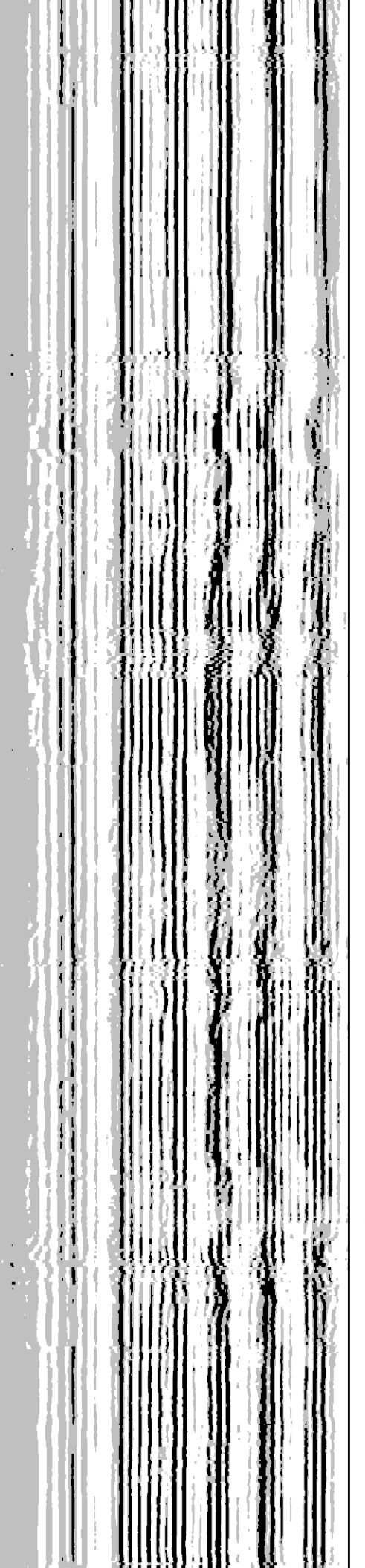
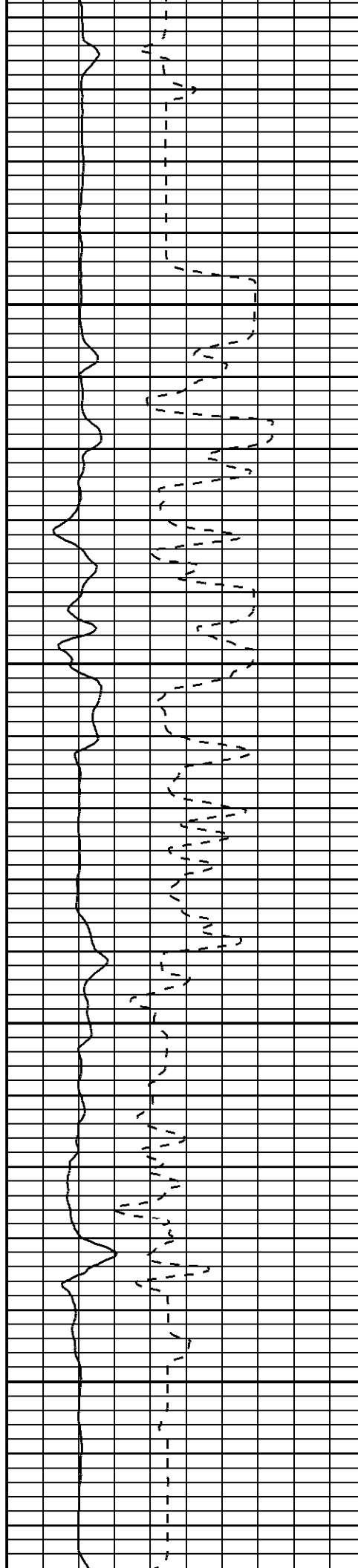


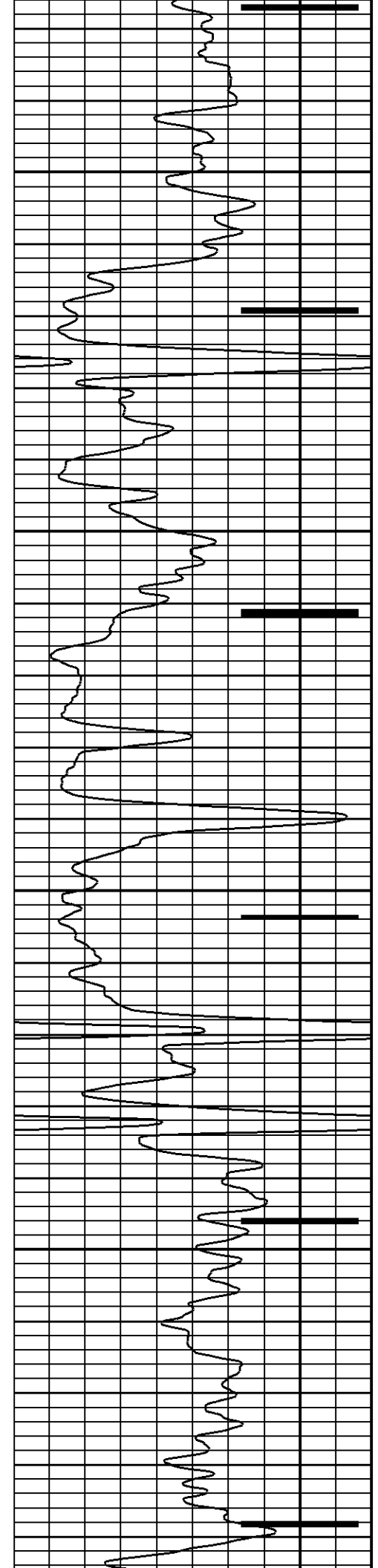
2650

2700

2750

2800



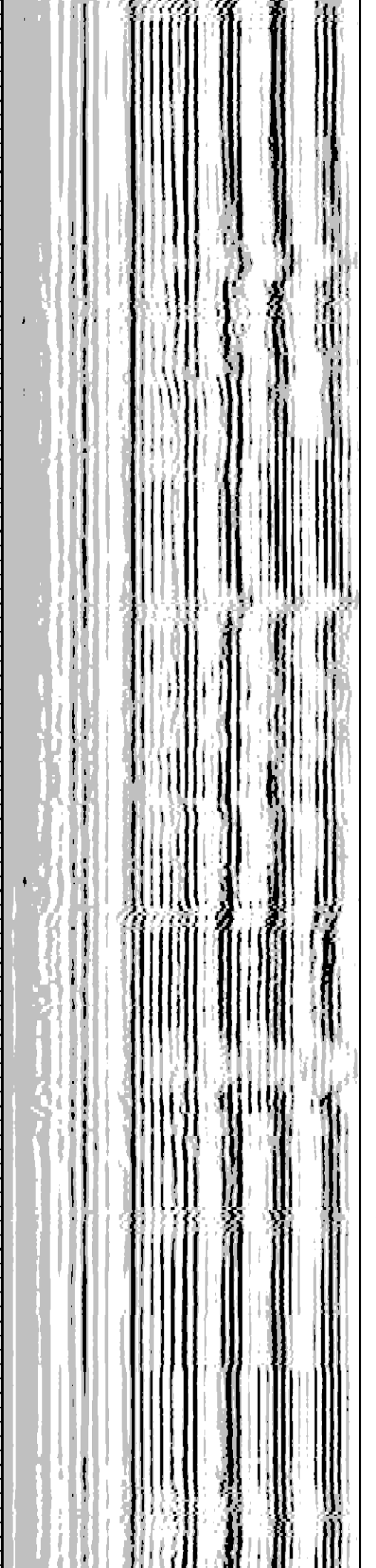
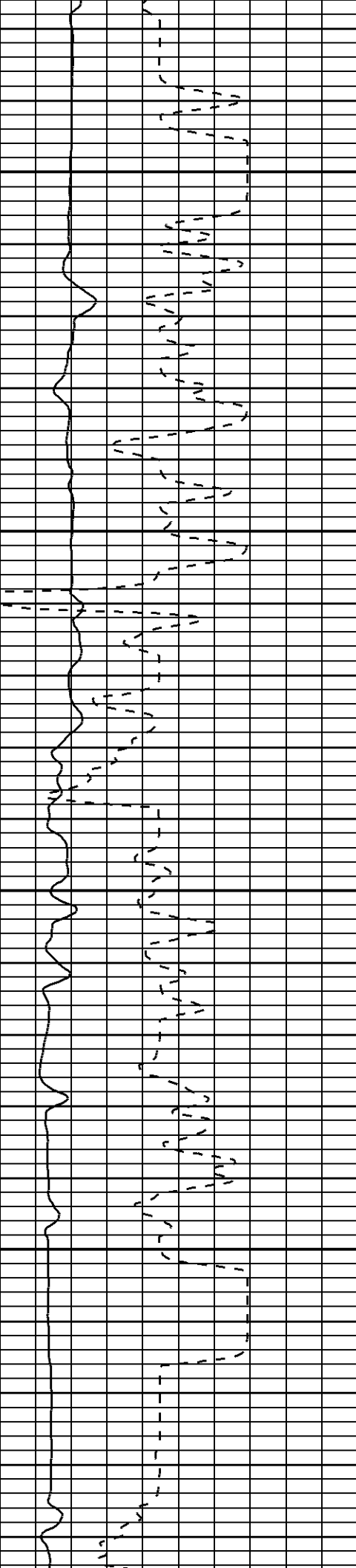


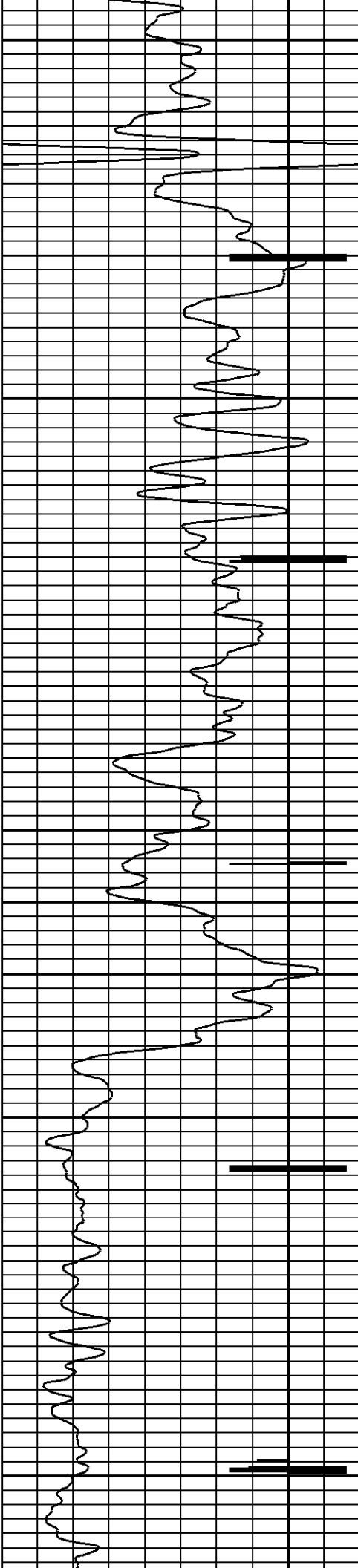
2850

2900

2950

3000





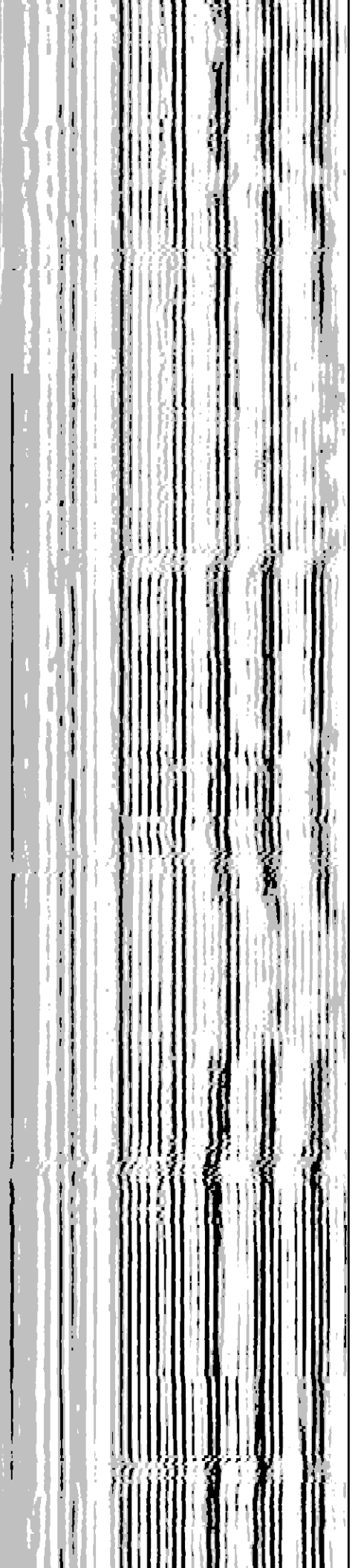
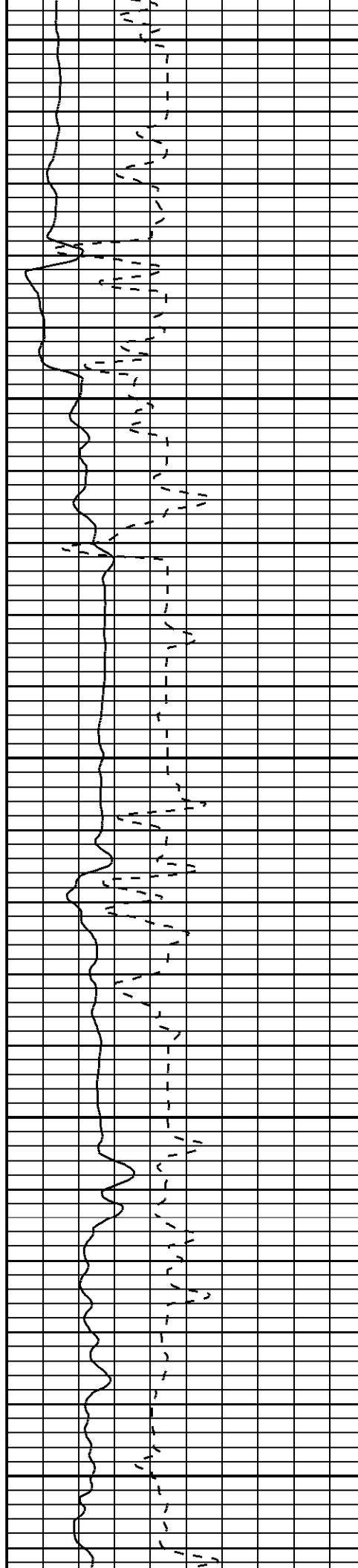
3050

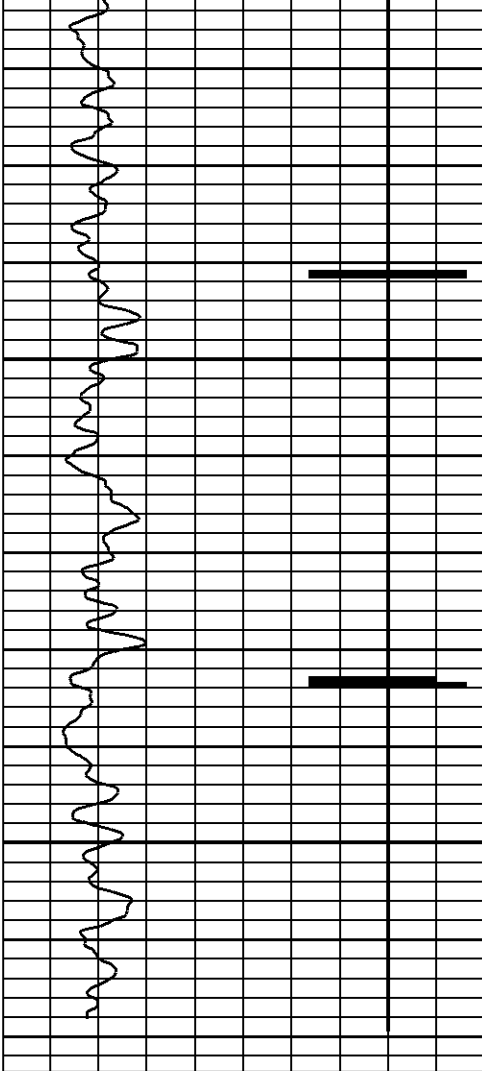
3100

3150

3200

3250



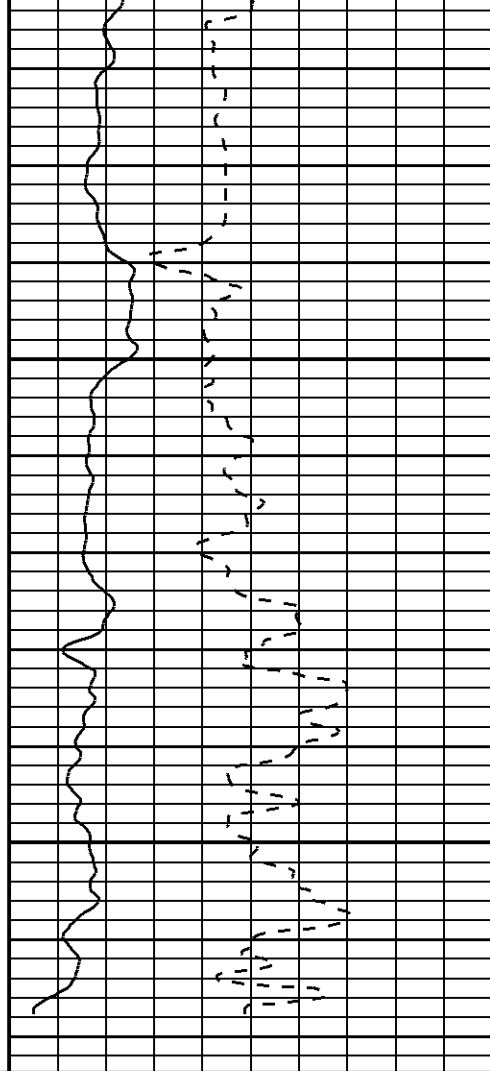


3300

3350

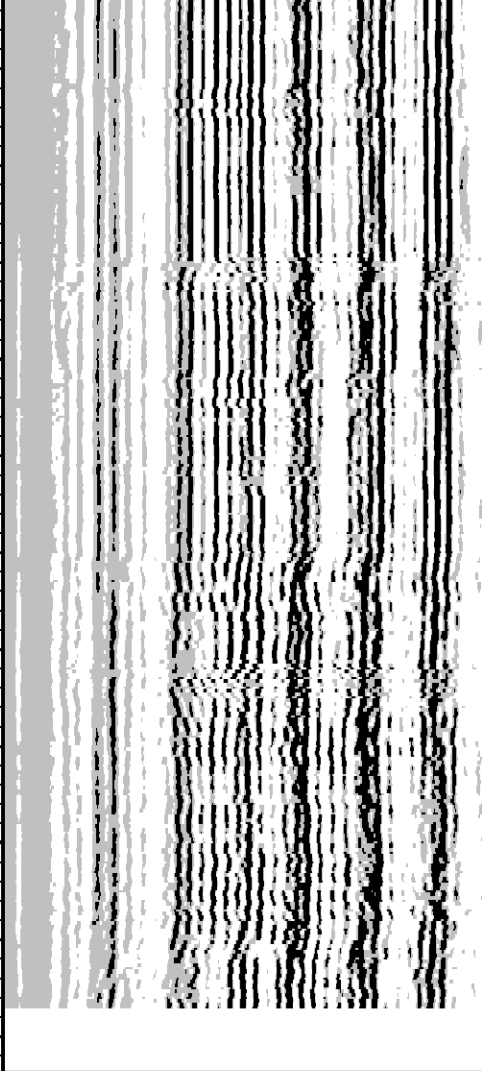
0 100.0

GAMMA RAY
CCL



0.0 100.0

750 200
amplitude
arrival time



VDL

RUN: SONIC BOND
DIR: UP
DATE: 09/24/13
TIME: 11:21:48

SONIC BOND

START: 3368.25ft
STOP: 1873.00ft
RES: 0.25ft
SCALE: 5"/100'

RUN: RADIOACTIVITY LOG
DIR: UP
DATE: 09/24/13
TIME: 10:18:01

RADIOACTIVITY LOG

START: 3368.25ft
STOP: 1873.00ft
RES: 0.25ft
SCALE: 5"/100'

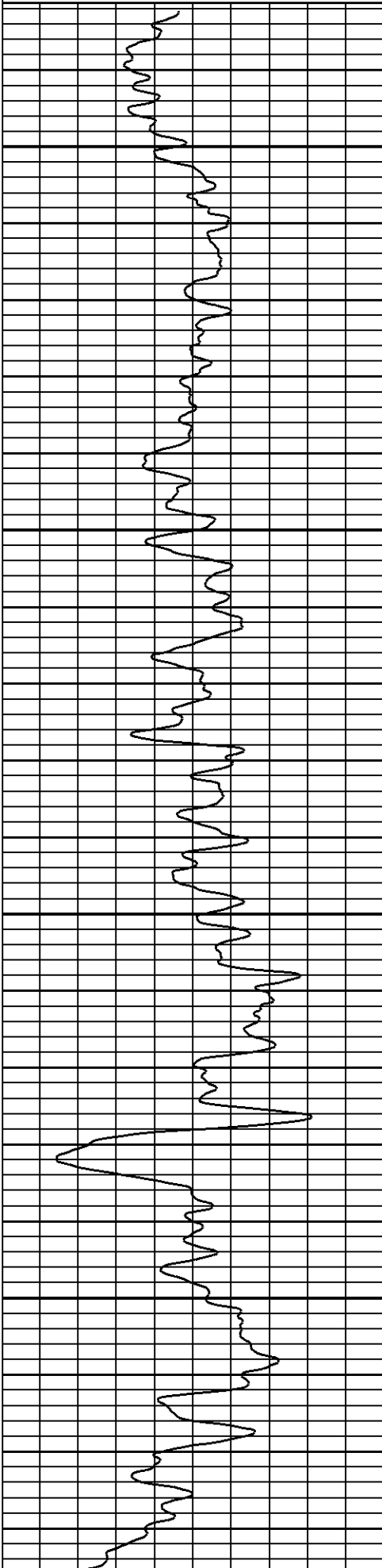
0

100.0

GAMMA RAY

NEUTRON

CCL

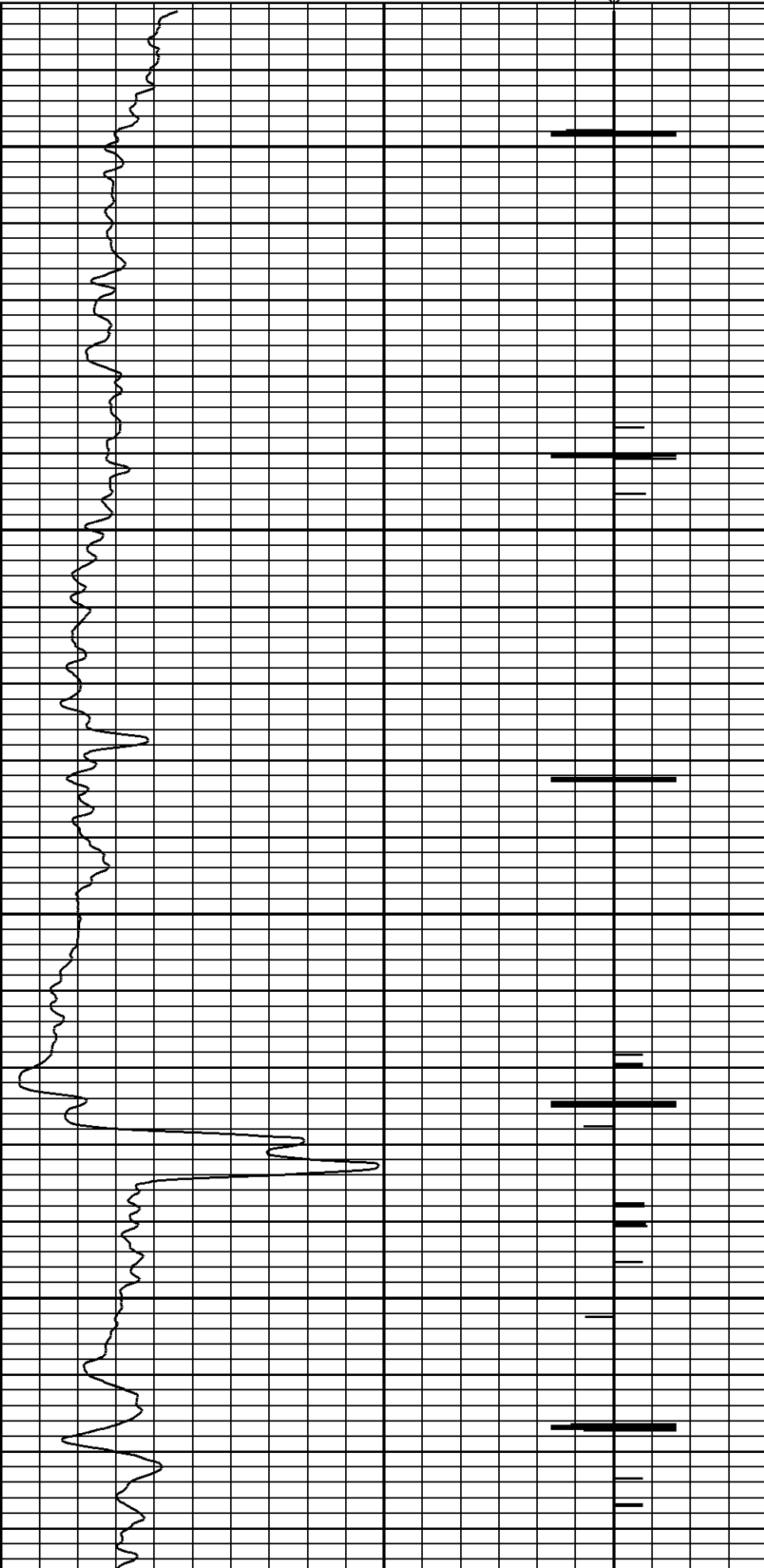


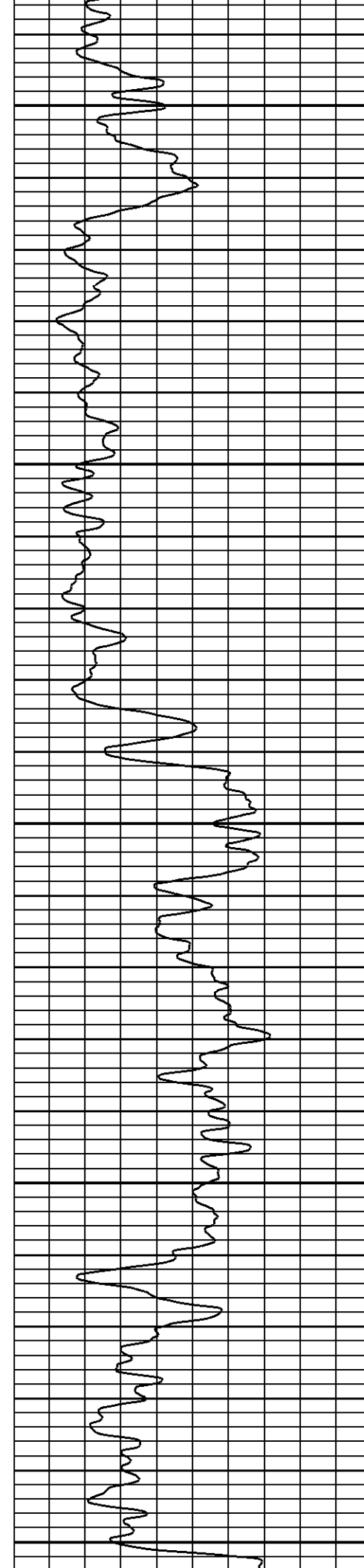
1900

1950

2000

2050





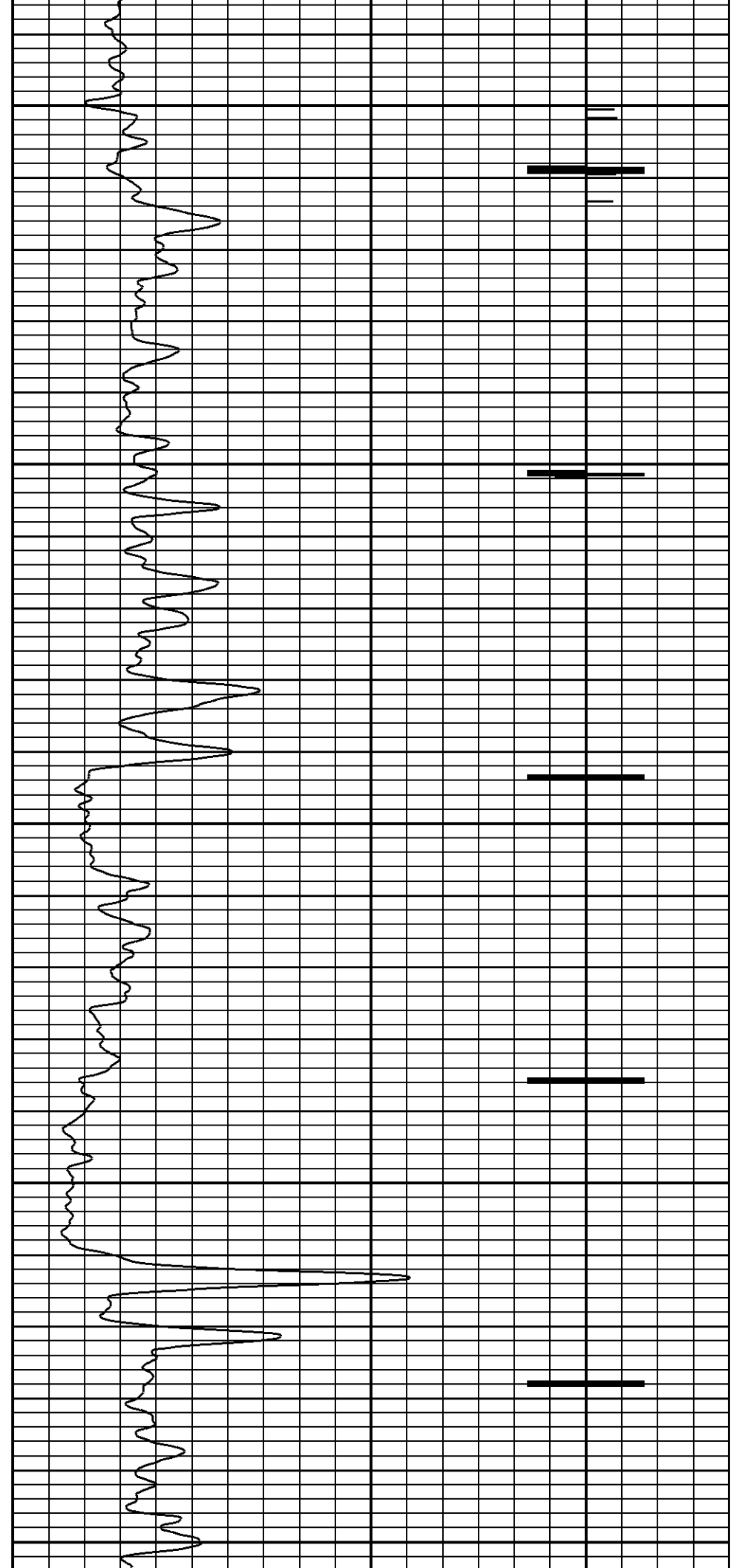
2100

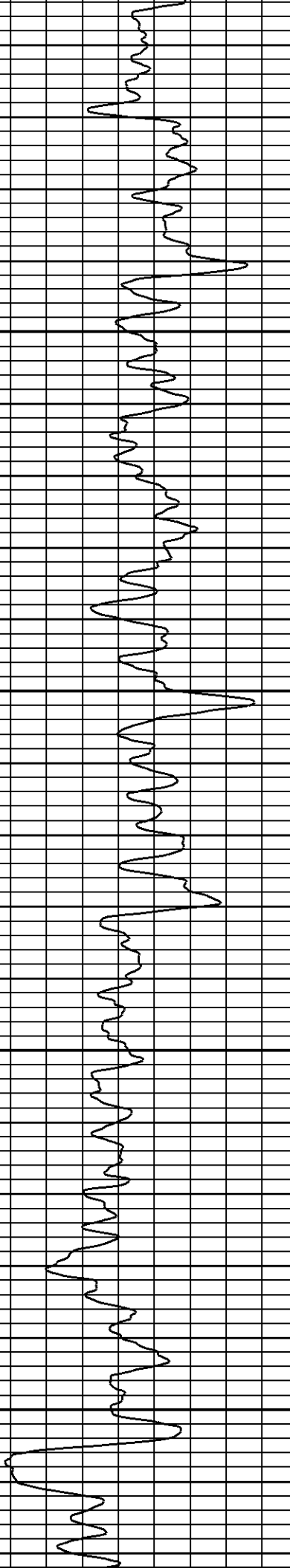
2150

2200

2250

2300



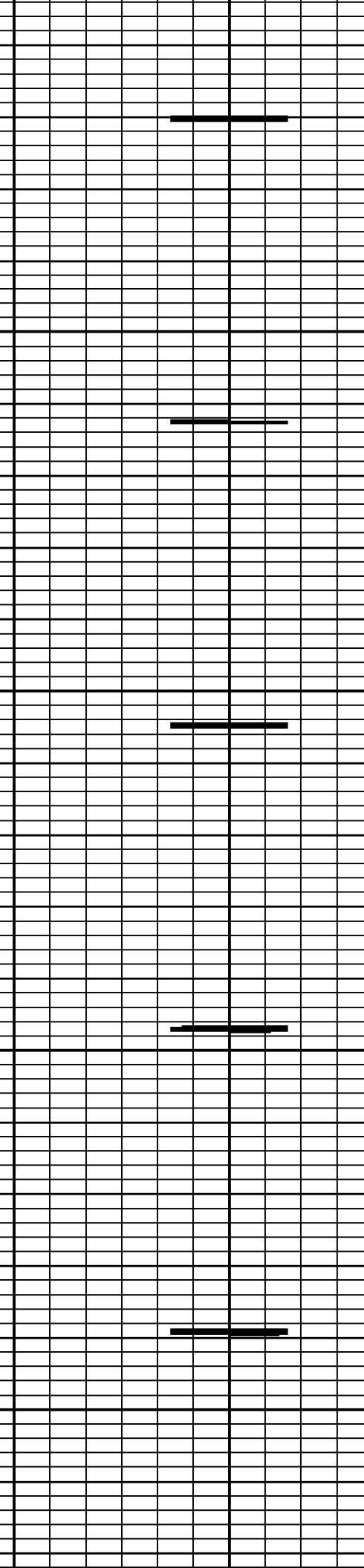
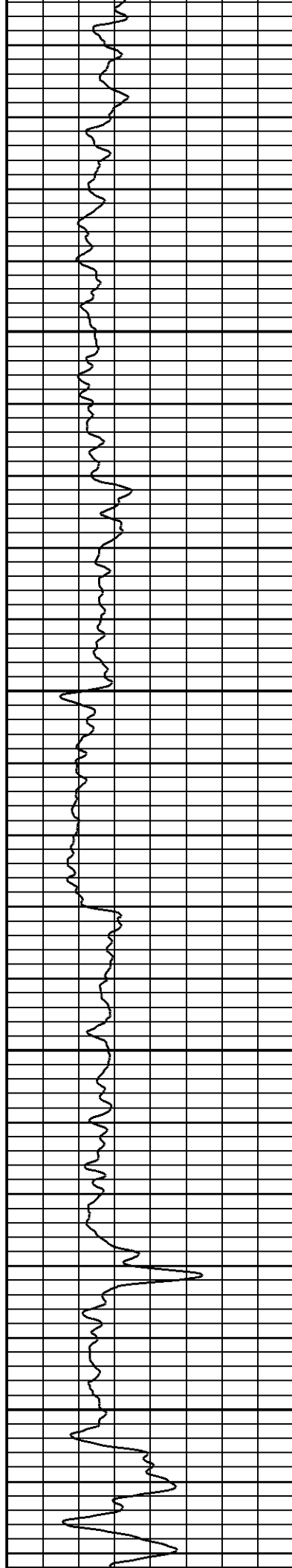


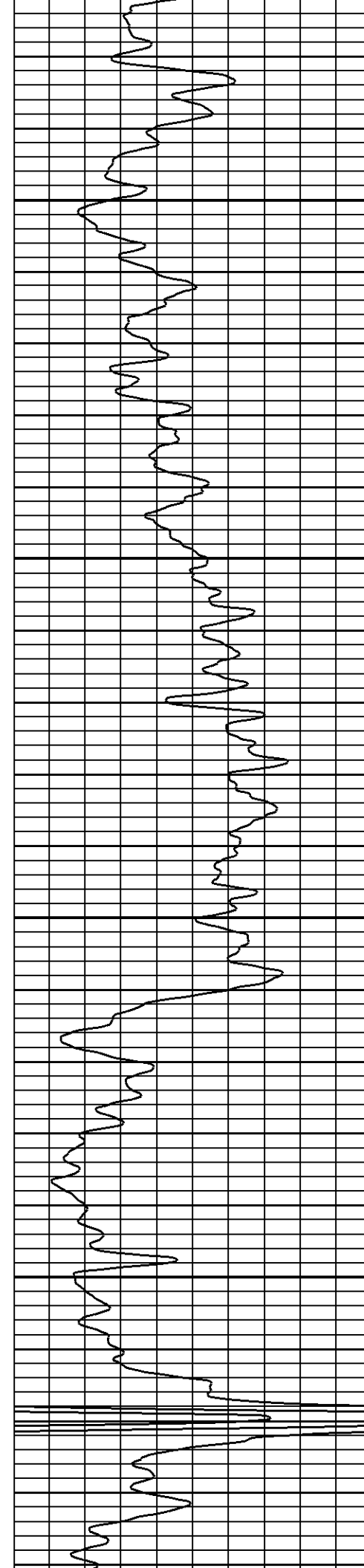
2350

2400

2450

2500



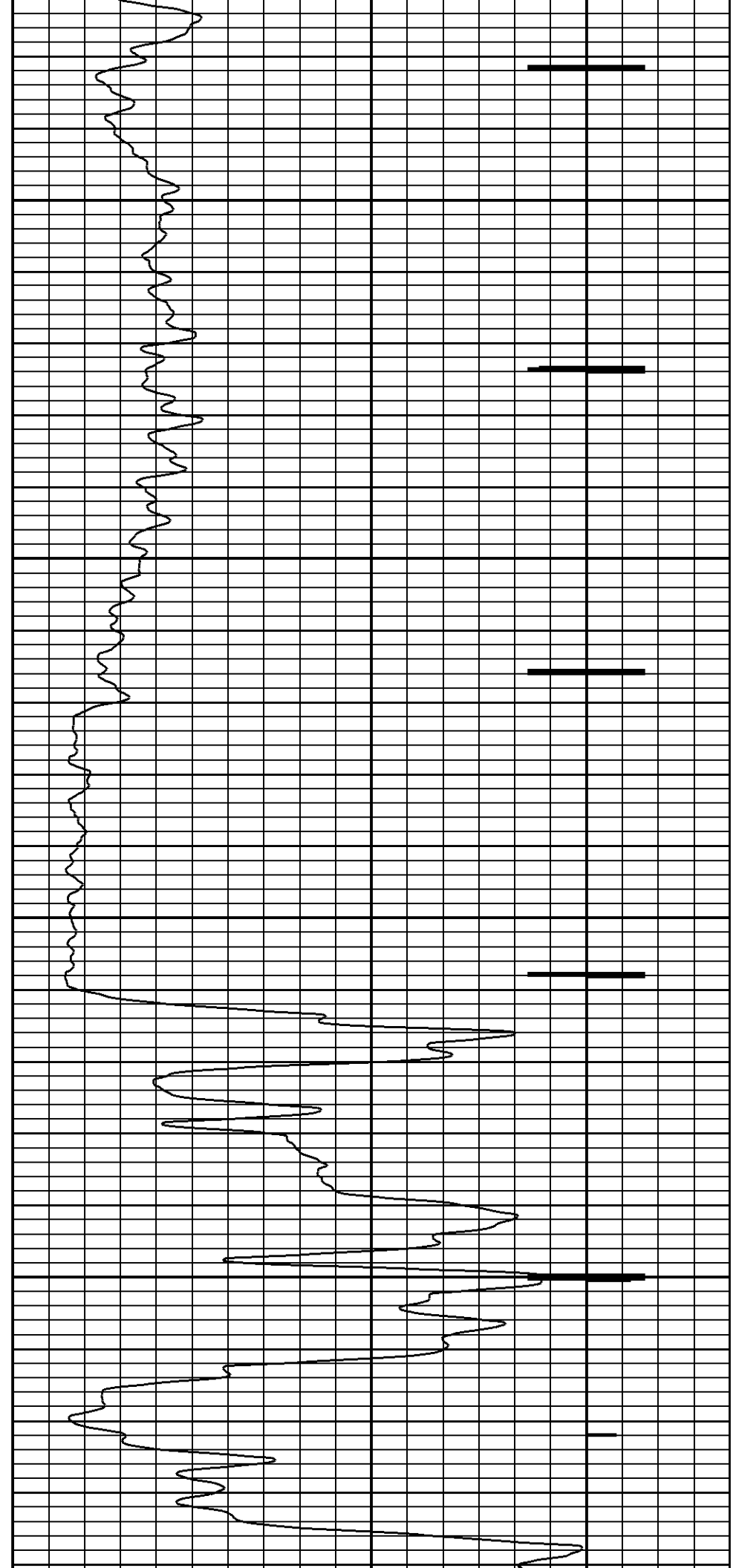


2550

2600

2650

2700



—

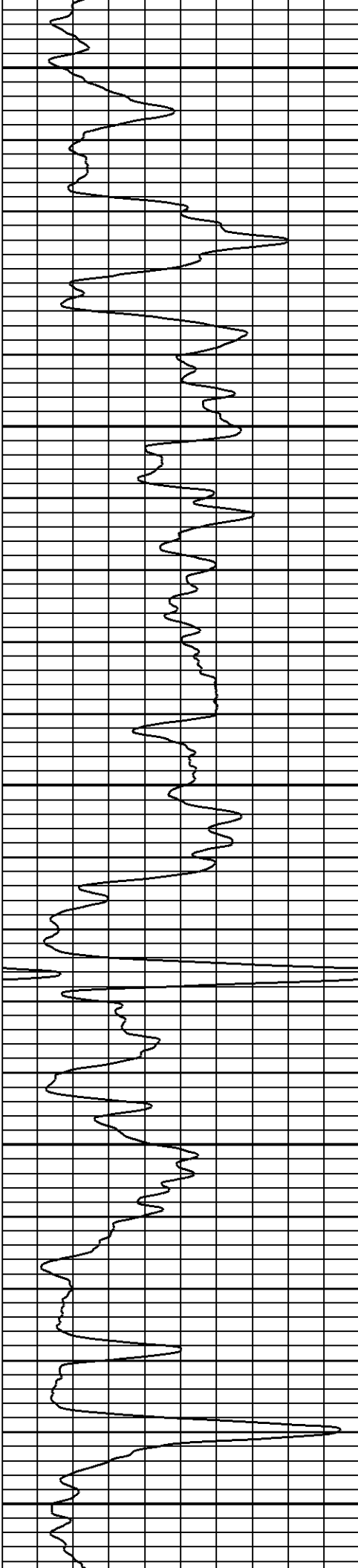
—

—

—

—

—



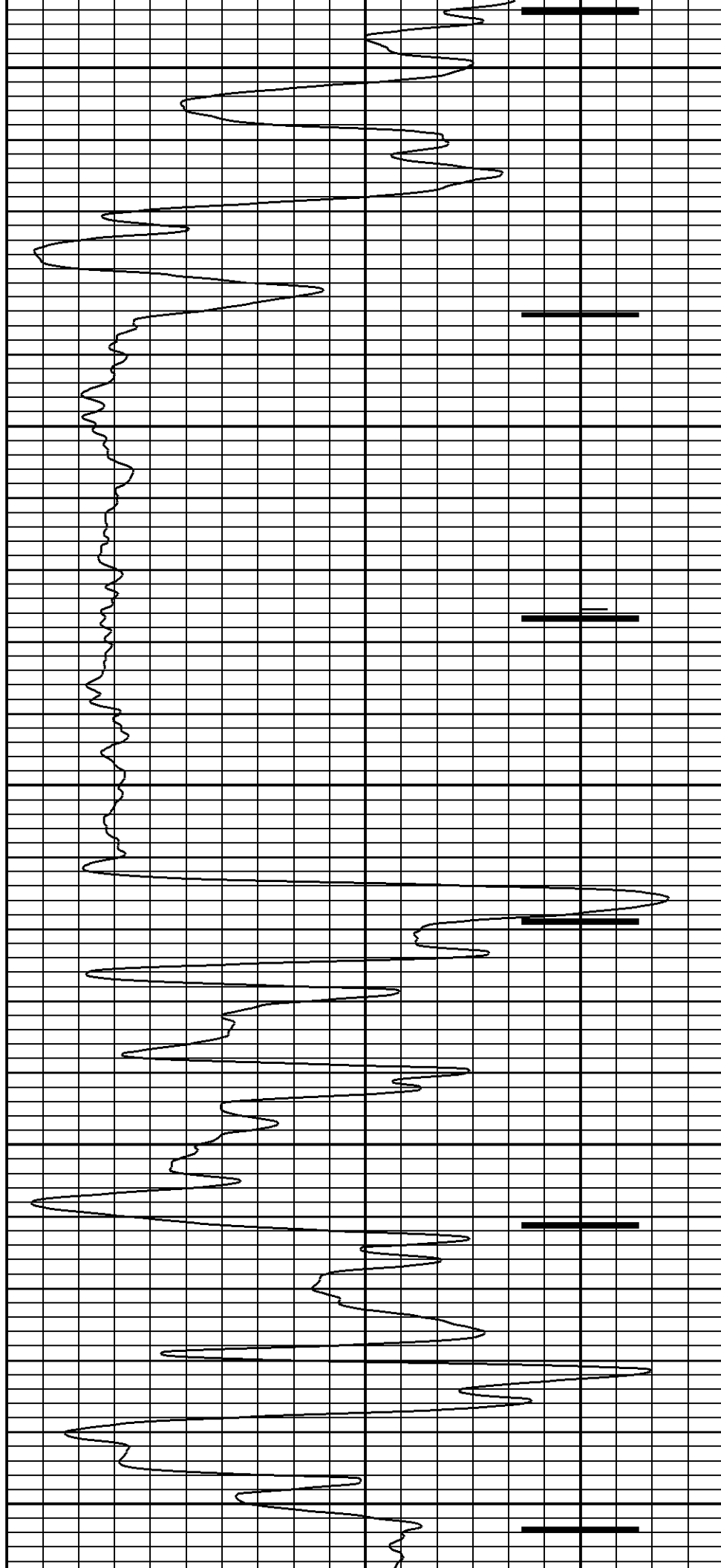
2750

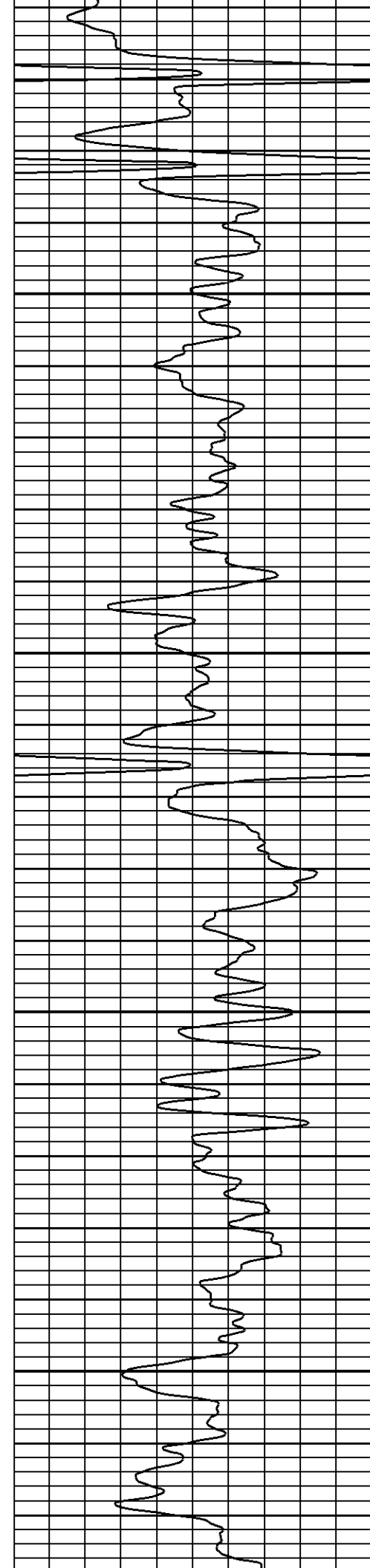
2800

2850

2900

2950



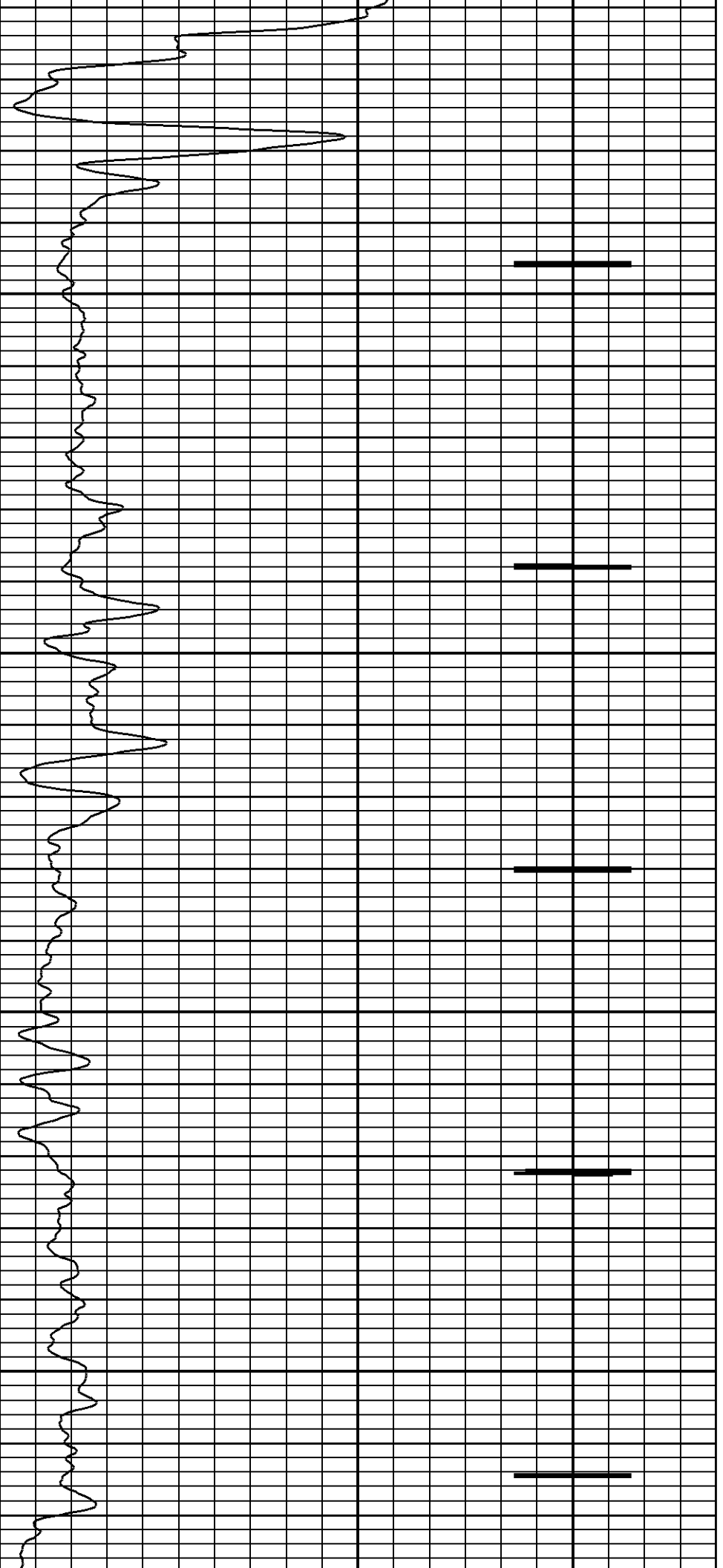


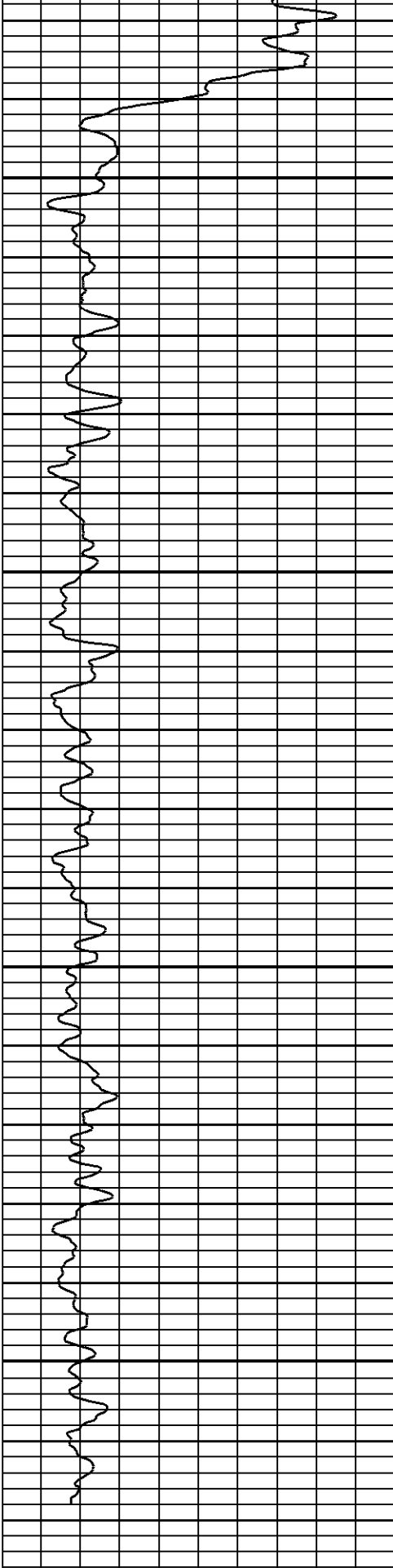
3000

3050

3100

3150





0 100.0

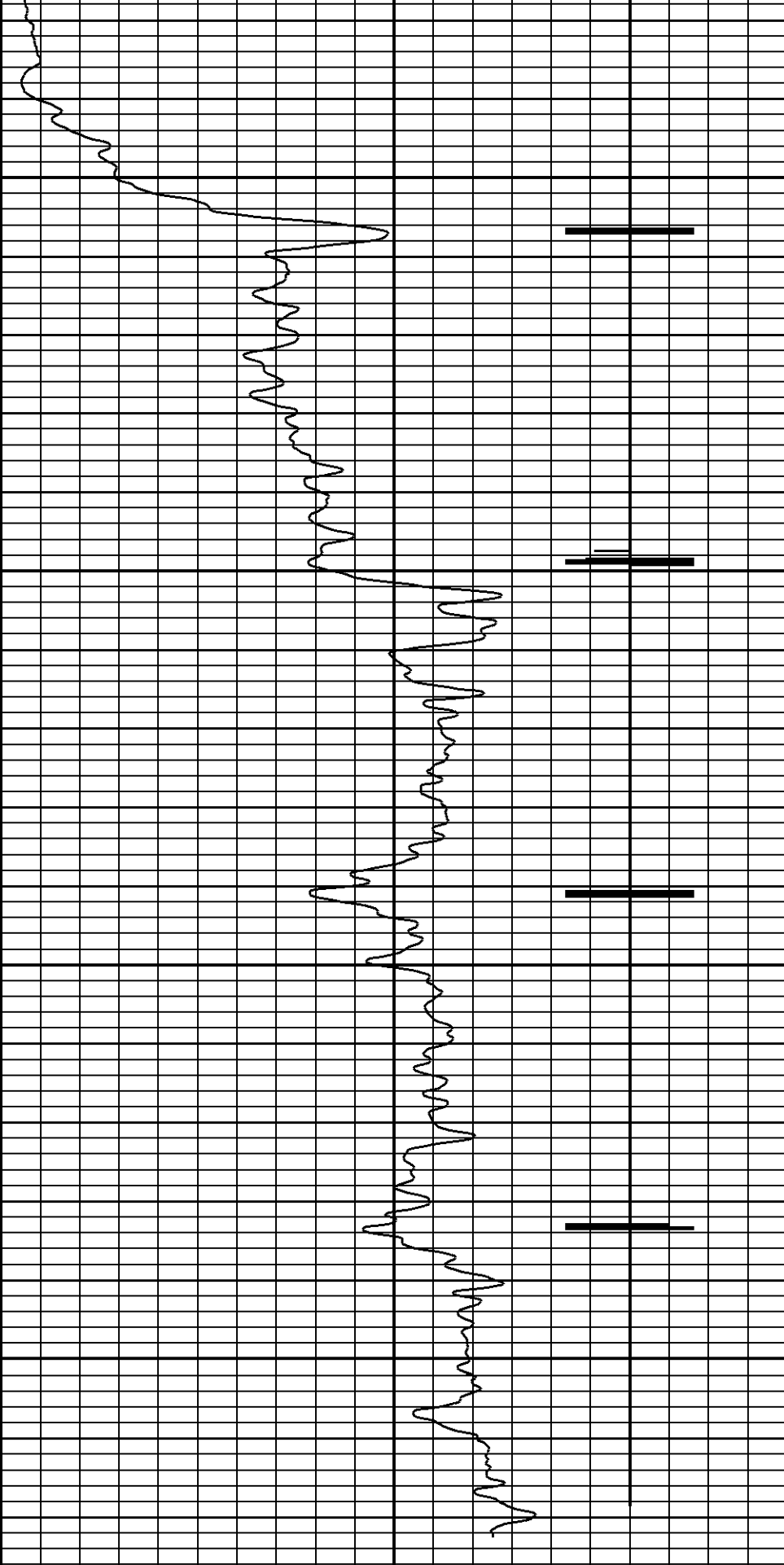
GAMMA RAY

3200

3250

3300

3350



25

NEUTRON

425

CCL

RUN: RADIOACTIVITY LOG

DIR: UP

DATE: 09/24/13

TIME: 10:18:01

RADIOACTIVITY LOG

START: 3368.25ft

STOP: 1873.00ft

RES: 0.25ft

SCALE: 5"/100'

Company ALTON OIL LLC.

Well STEFFAN UNIT # 3

Field POSEY NE

Country U.S.A. **State/Prv** KANSAS

DYNA-LOG INC.