



Pioneer Energy Services

## Computer Processed Interpretation

15-097-21,767-00-00

API No.

Company **Toto Energy, LLC**

Well **Binford #2-1**

Field **Wellsford**

County **Kiowa** State **Kansas**

Location

**1650' FSL & 2310' FEL**

Other Services  
DIL/CNL/CDL  
MEL

Sec: **2** Twp: **28S** Rge: **16W**

Elevation

Ground Level **Elevation 2111**

Kelly Bushing **11 Ft. Above Perm. Datum**

Drilling Measured From Kelly Bushing **K.B. 2122**

Date Recorded **9/3/2013** **D.F. 2111**

Depth Logger **5050** **G.L. 2111**

Curve Definitions

SW Water Saturation

SXO Water Saturation In The Flushed Zone

VCL Volume Of Clay

PHIE Density - Neutron Crossplot Shale Corrected

BWV Bulk Volume Water

BWMSXO Bulk Volume Water In Flushed Zone

DCAL Caliper

SPC SP Corrected For Baseline

DGA Apparent Grain Density

Payflag If: PHIE > 2 %, VCL < 40 %, SPC > -10 , SW < 50 % & DCAL < 11

Recorded By

D Kerr

Witnessed By

Sean Deenihan

Analysis By

Dale Legleiter

<<< Fold Here >>>

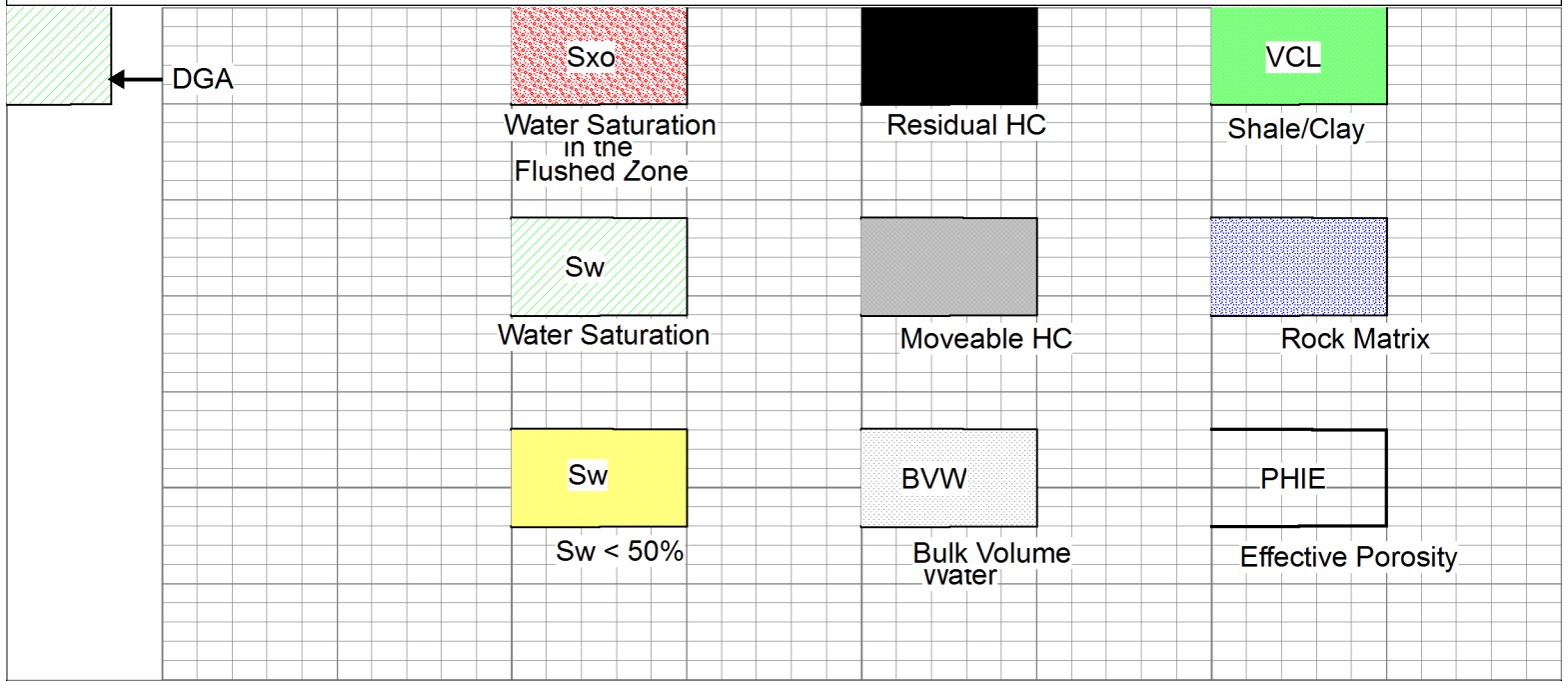
All interpretations are opinions based on inferences from electrical or other measurements and we cannot and do not guarantee the accuracy or correctness of any interpretation, and we shall not, except in the case of gross or willful negligence on our part, be liable or responsible for any loss, costs, damages, or expenses incurred or sustained by anyone resulting from any interpretation made by any of our officers, agents or employees. These interpretations are also subject to our general terms and conditions set out in our current Price Schedule.

### Comments

Thank you for using Pioneer Energy Services  
www.pioneer.com  
785 625 3858

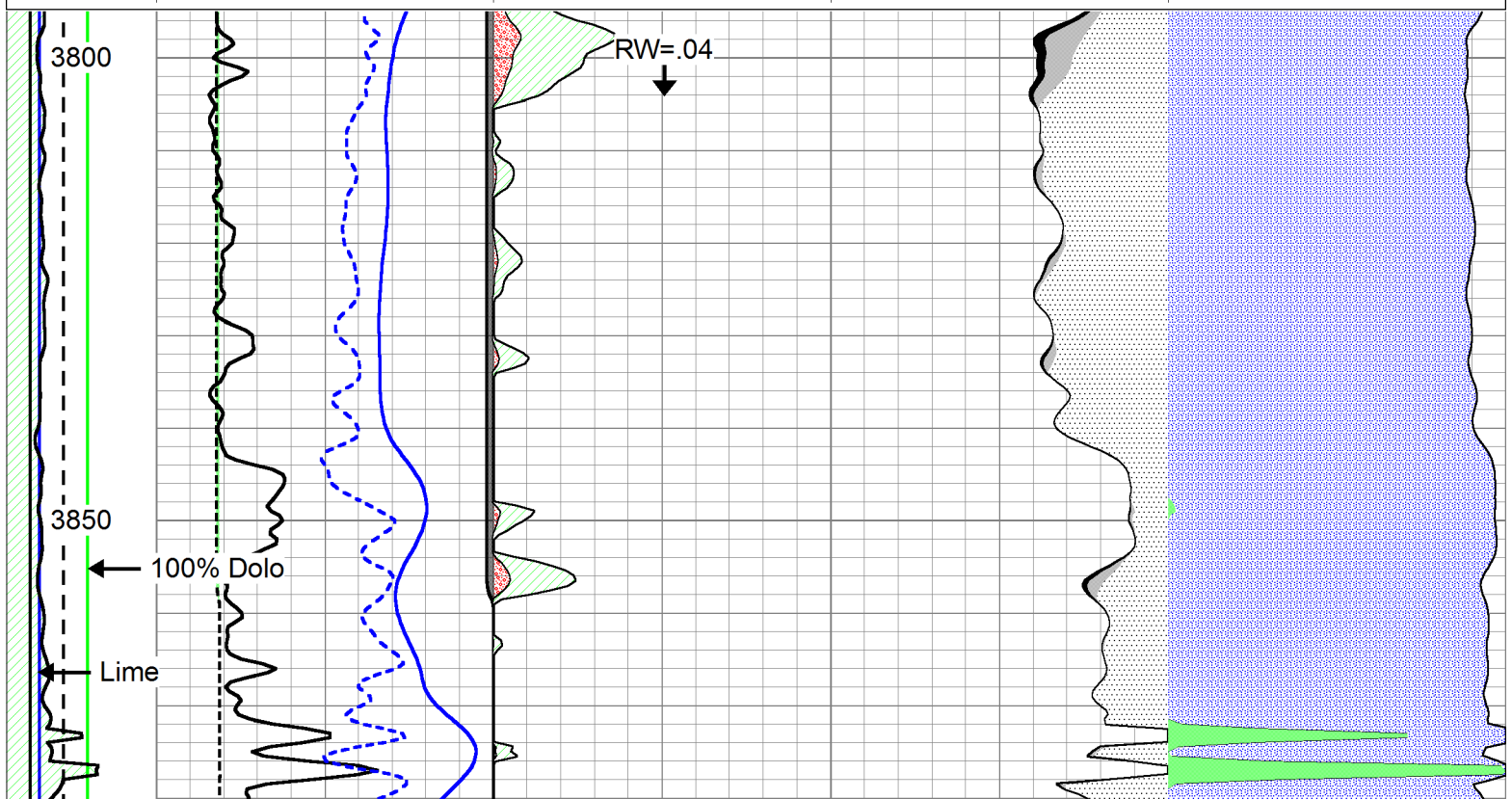
Haviland KS, 3 East, 1 North,  
1/2 East, North Into

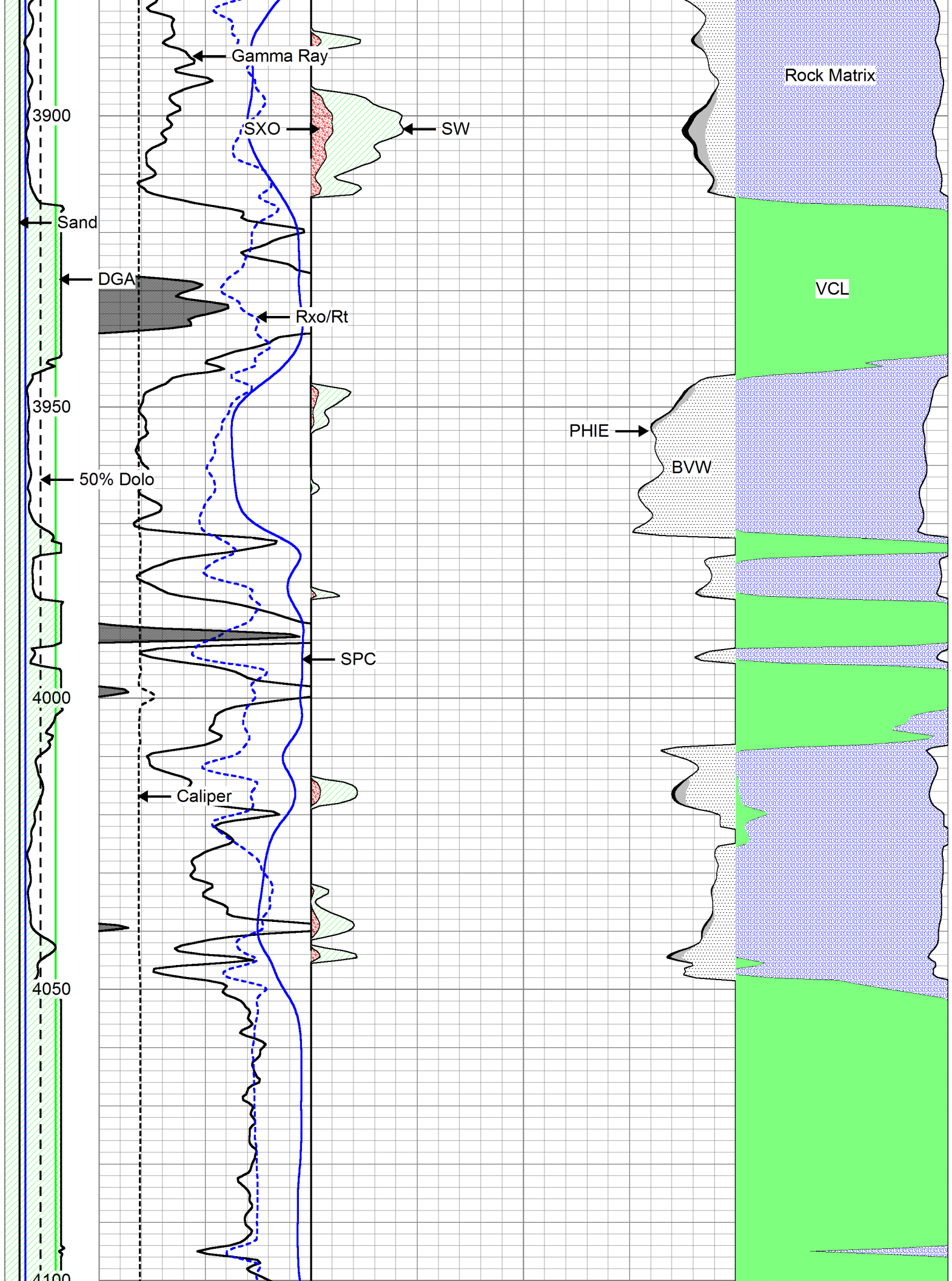
Database File: c:\warrior\data\cross plots\2wxplt.db  
Dataset Pathname: litho  
Presentation Format: 2wxplt



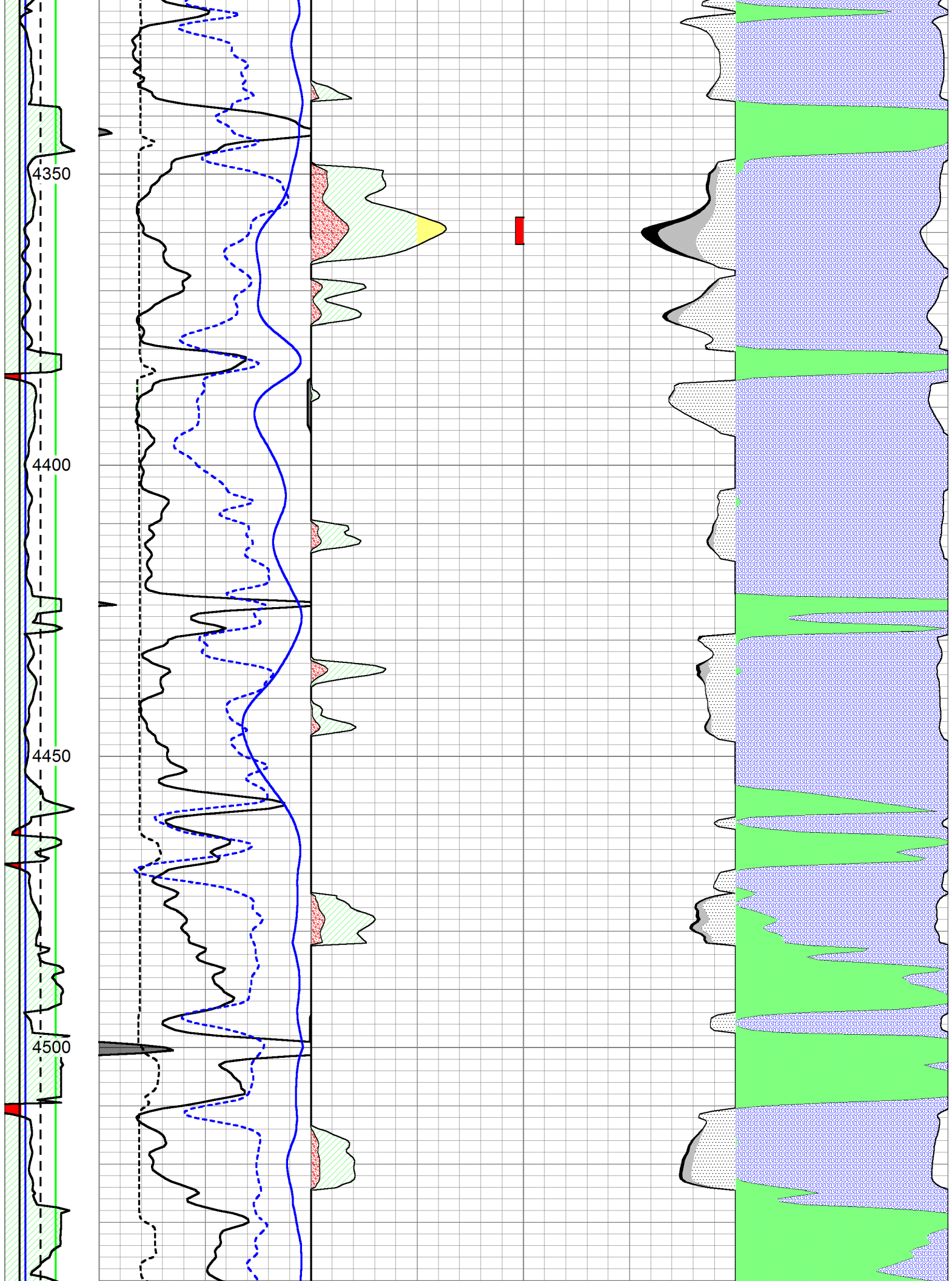
Database File: c:\warrior\data\toto energy\_binford #2-1\toto\_binford\_2\_1hd.db  
 Dataset Pathname: cpi/totocpi  
 Presentation Format: calc  
 Dataset Creation: Tue Sep 03 17:59:43 2013  
 Charted by: Depth in Feet scaled 1:240

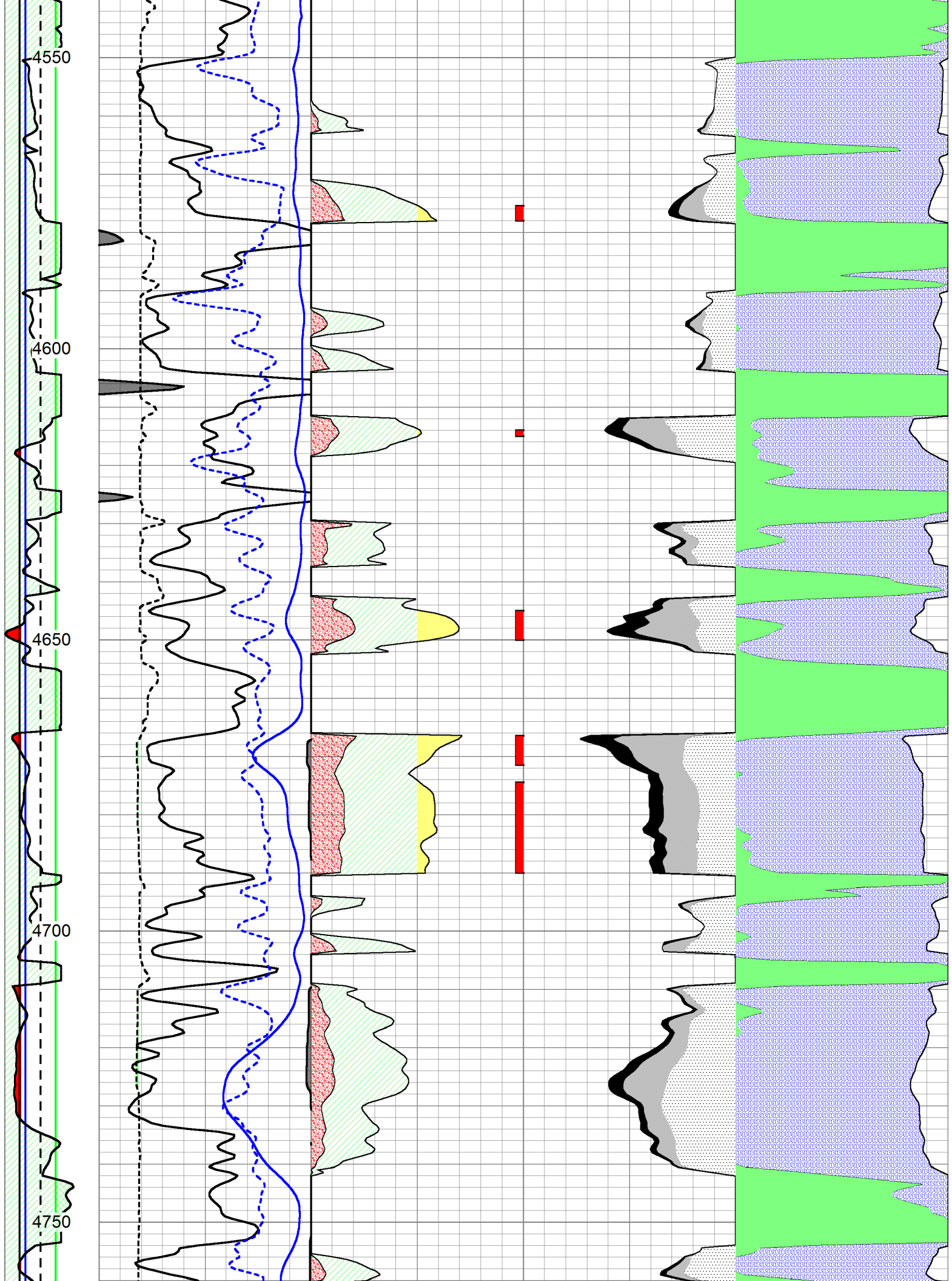
DGA	0	Gamma Ray	150	1	SW	0	0.3	PHIE	0	0	VCL	1	
2.6	3.1	6	DCAL	16	30	PAYFLAG	0	0.3	BVW	0	1	PHIE	0
		-150	SPC (mV)	0	1	SXO	0	0.3	BVWSXO	0			

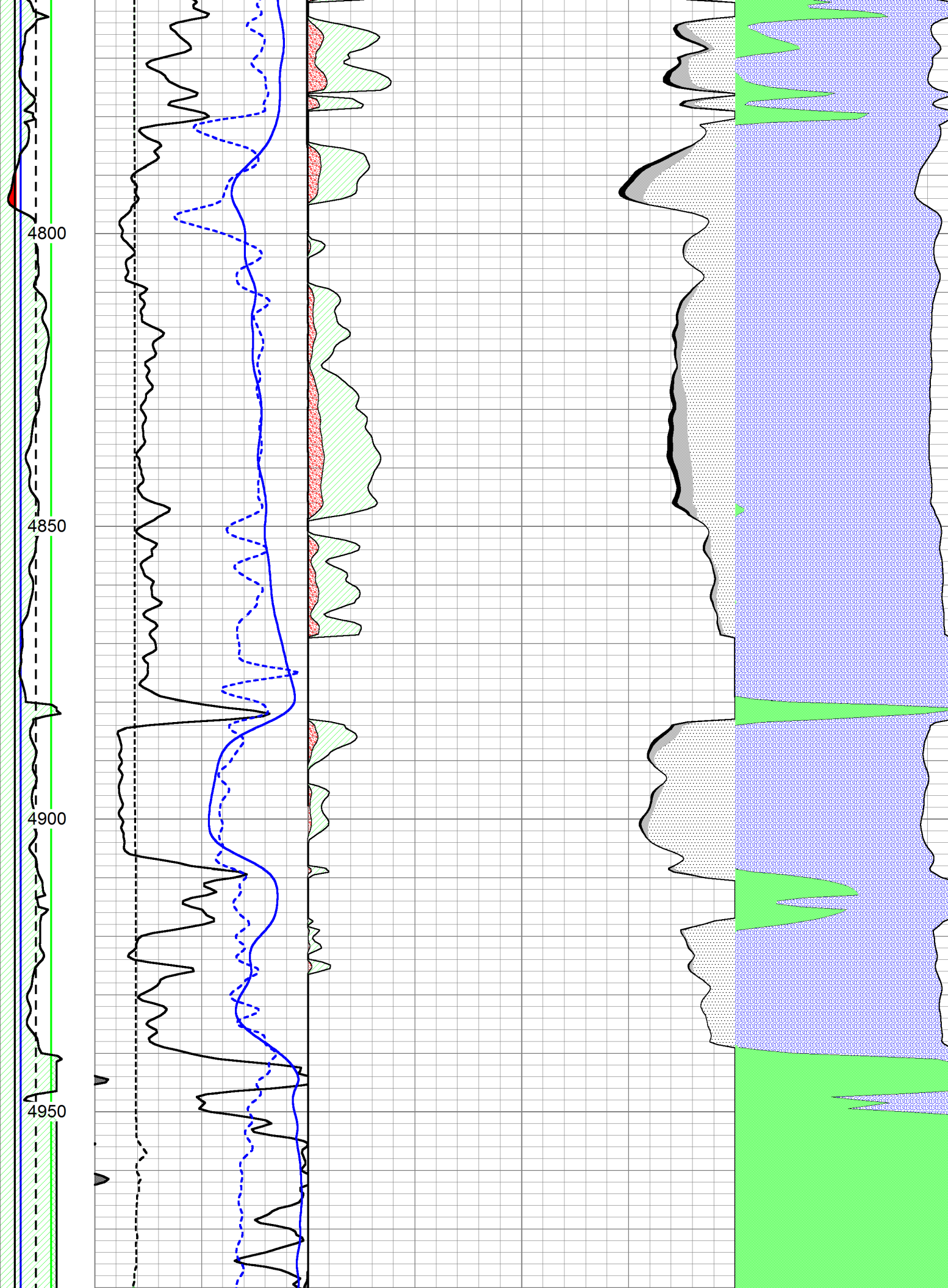


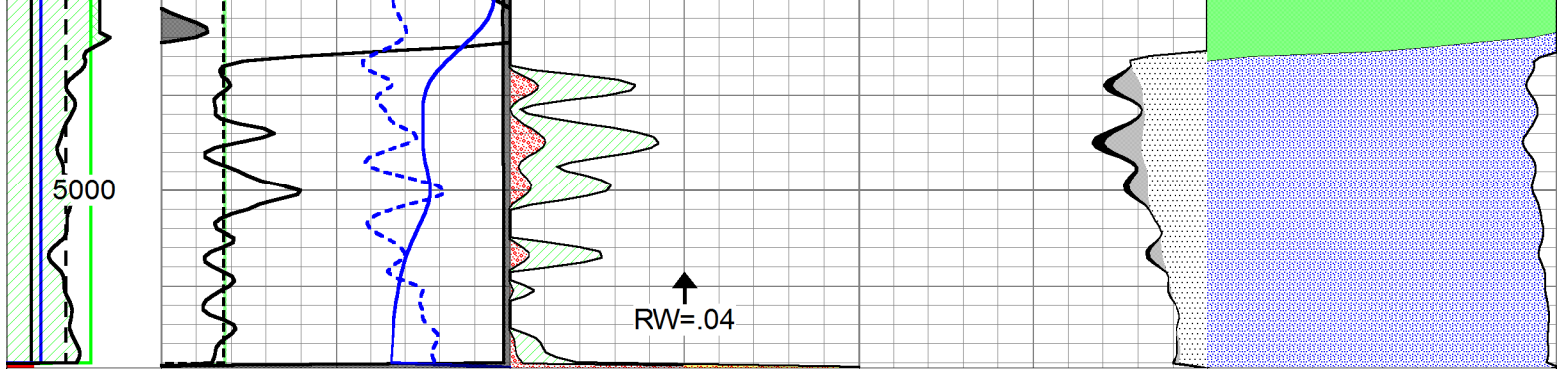












DGA	0	Gamma Ray	150	1	SW	0	0.3	PHIE	0	0	VCL	1	
2.6	3.1	6	DCAL	16	30	PAYFLAG	0	0.3	BVW	0	1	PHIE	0
		-150	SPC (mV)	0	1	SXO	0	0.3	BVWSXO	0			