



Pioneer Energy Services

Dual Induction Log

15-097-21,767-00-00

API No.

Company **Toto Energy, LLC**

Well **Binford #2-1**

Field **Wellsford**

County **Kiowa** State

Kansas

Location **1650' FSL & 2310' FEL**

Sec: **2** Twp: **28S** Rge: **16W**

Permanent Datum **Ground Level** Elevation **2111**

Log Measured From **Kelly Bushing** 11 Ft. Above Perm. Datum

Drilling Measured From **Kelly Bushing**

Other Services
CNL/CDL
MEL
Elevation
K.B. 2122
D.F. 2111
G.L. 2111

Date **9/3/2013**

Run Number **One**

Depth Driller **5053**

Depth Logger **5050**

Bottom Logged Interval **5049**

Top Log Interval **850**

Casing Driller **8.625 @ 857**

Casing Logger **856**

Bit Size **7.875**

Type Fluid in Hole **Chemical**

Salinity,ppm CL **7000**

Density / Viscosity **9.4 61**

pH / Fluid Loss **9.5 10.4**

Source of Sample **Flowline**

Rm @ Meas. Temp **0.60 @ 85**

Rmf @ Meas. Temp **0.45 @ 85**

Rmc @ Meas. Temp **0.81 @ 85**

Source of Rmf / Rmc **Charts**

Rm @ BHT **0.40 @ 127**

Operating Rig Time **4 Hours**

Max Rec. Temp. F **127**

Equipment Number **15**

Location **Hays**

Recorded By **D.Kerr**

Witnessed By **Sean Deenihan**

<<< Fold Here >>>

All interpretations are opinions based on inferences from electrical or other measurements and we cannot and do not guarantee the accuracy or correctness of any interpretation, and we shall not, except in the case of gross or willful negligence on our part, be liable or responsible for any loss, costs, damages, or expenses incurred or sustained by anyone resulting from any interpretation made by any of our officers, agents or employees. These interpretations are also subject to our general terms and conditions set out in our current Price Schedule.

Comments

Thank you for using Pioneer Energy Services
www.pioneerenergy.com
785 625 3858

Haviland KS, 3 East, 1 North,
1/2 East, North Into

Database File: c:\warrior\data\toto energy_binford #2-1\toto_binford_2_1hd.db
Dataset Pathname: DIL\totostk
Presentation Format: dil2in
Dataset Creation: Tue Sep 03 08:42:50 2013
Charted by: Depth in Feet scaled 1:600

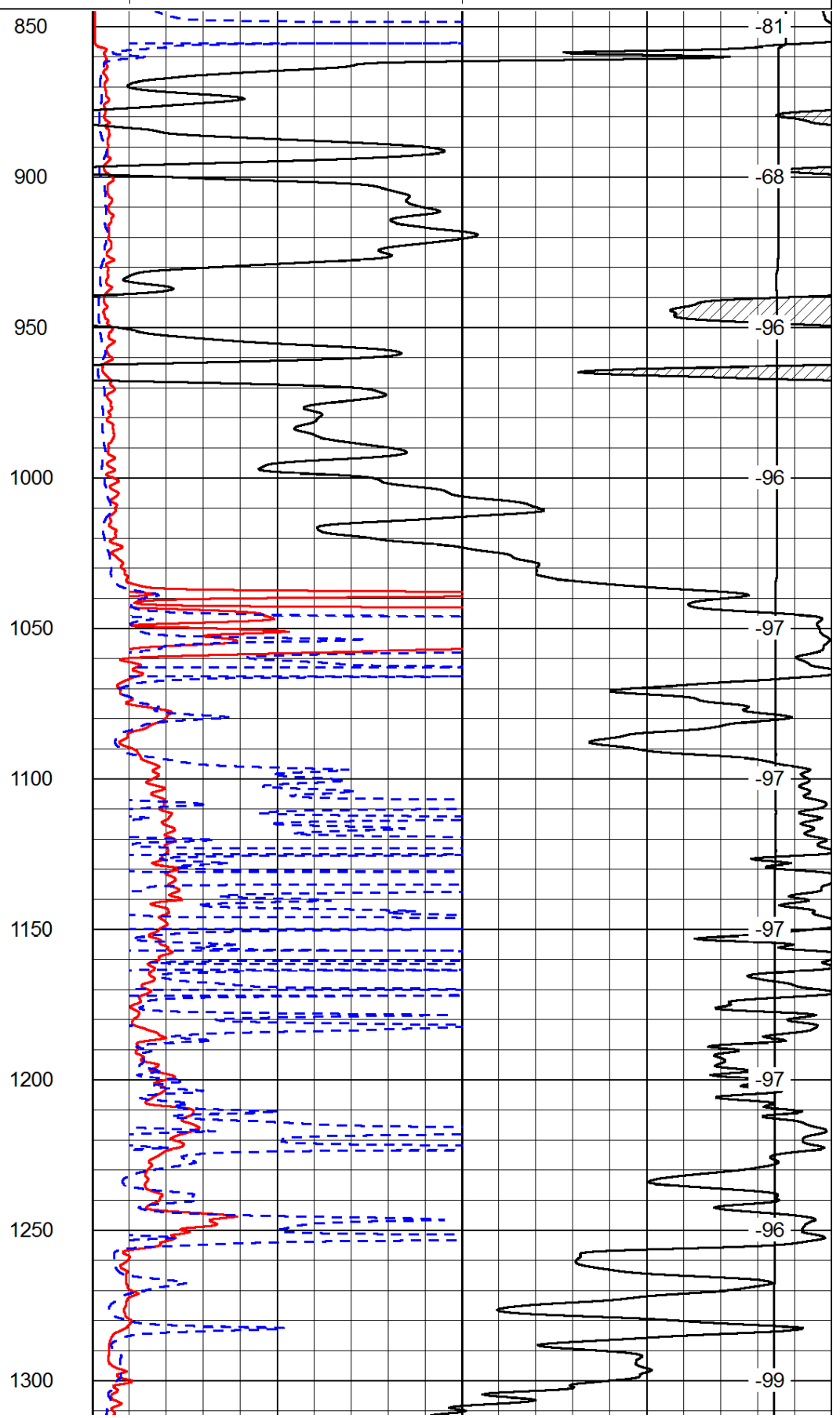
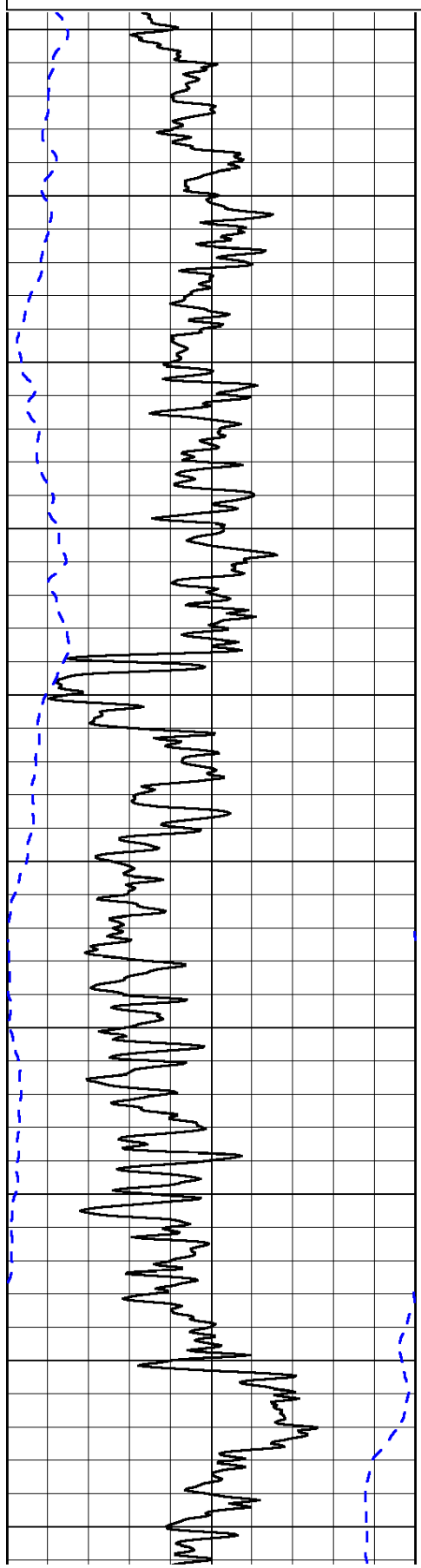
0	Gamma Ray	150
-200	SP (mV)	0

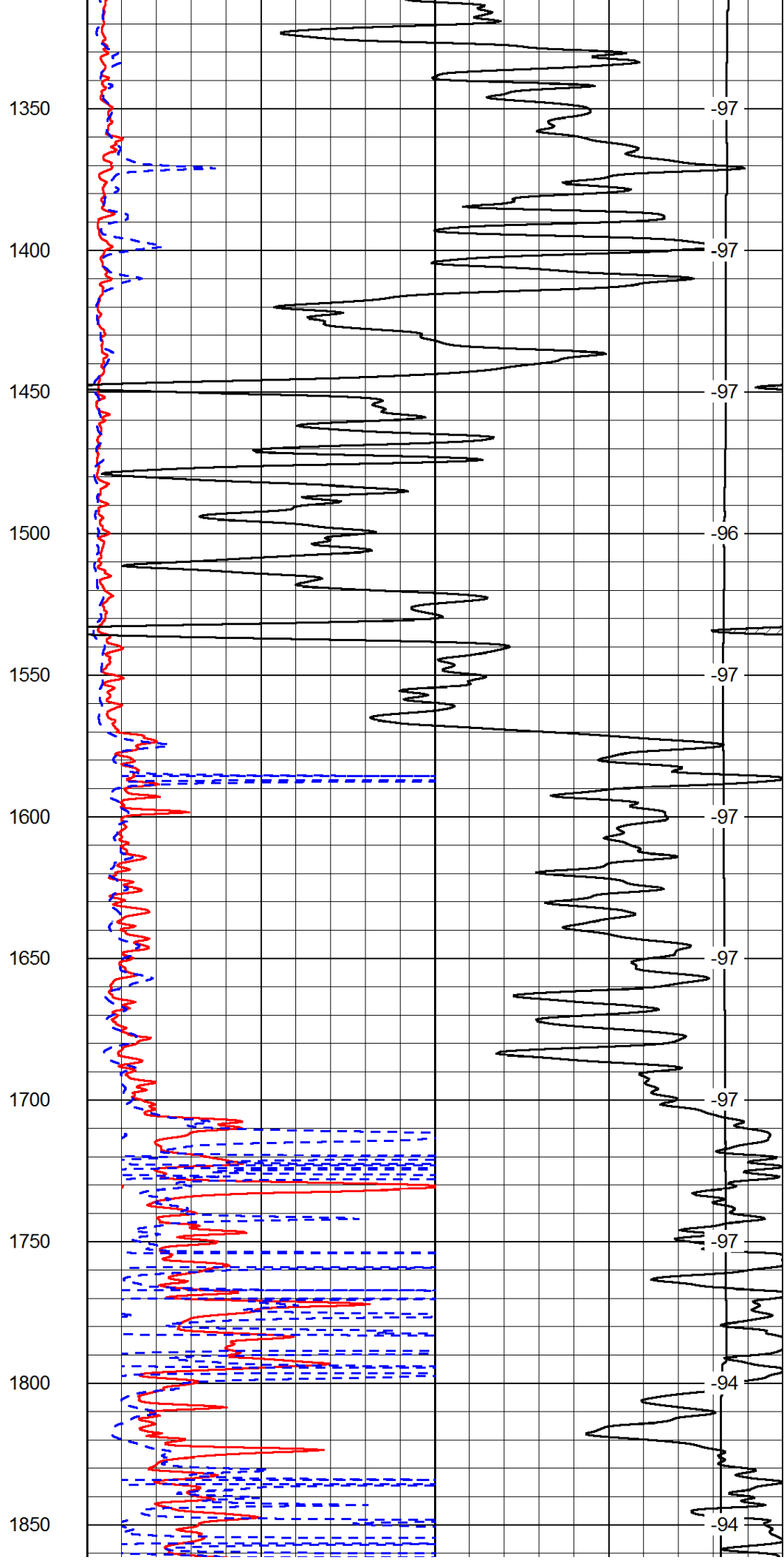
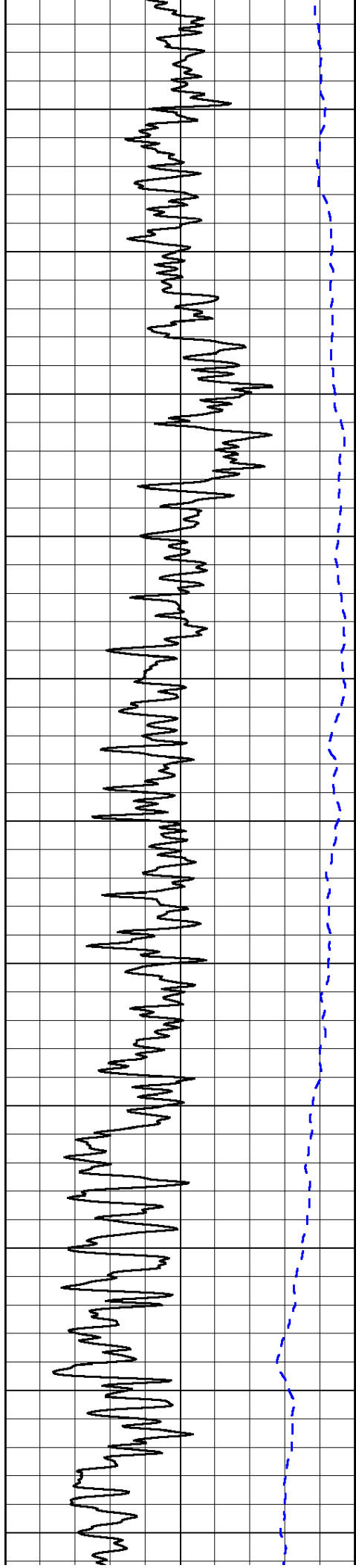
0	Shallow Resistivity	50
0	Deep Resistivity	50

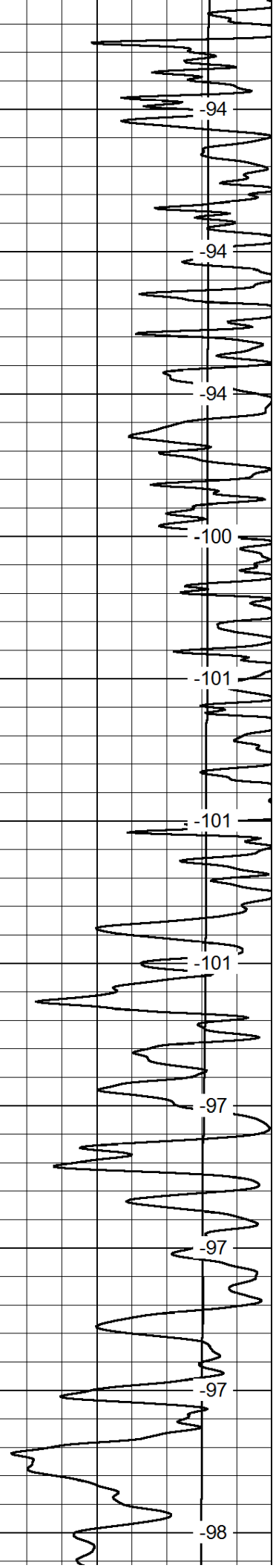
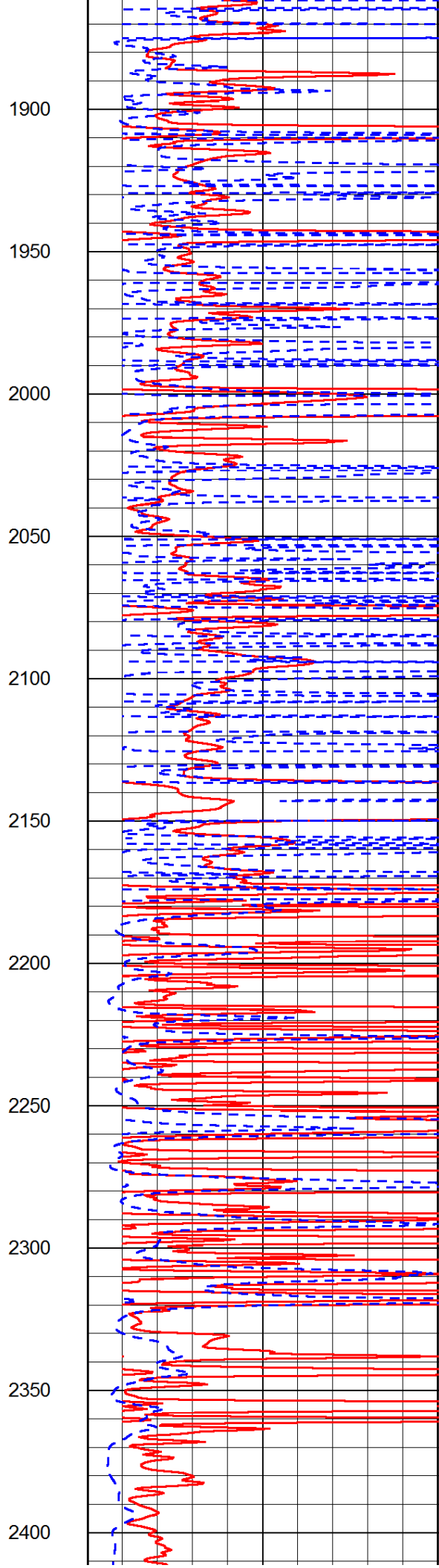
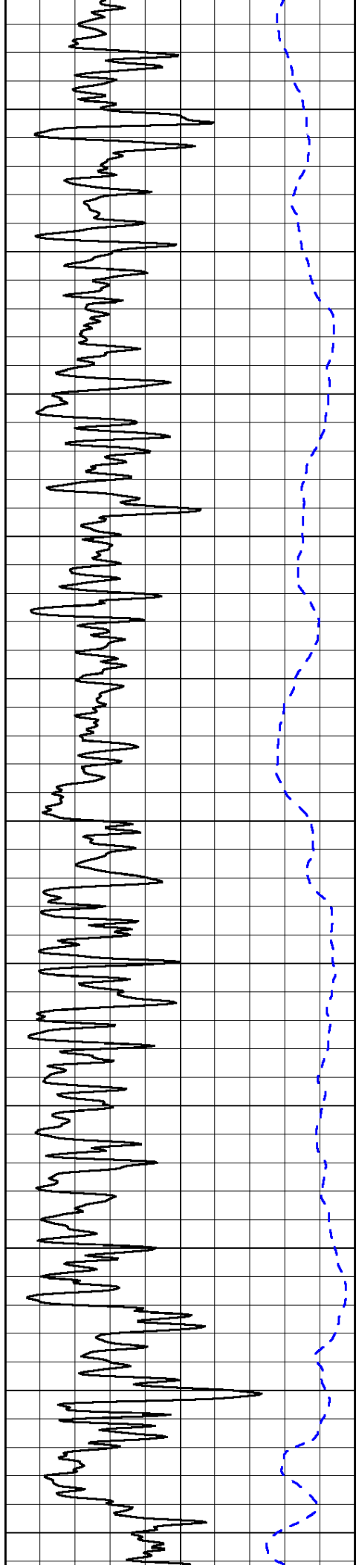
LSPD

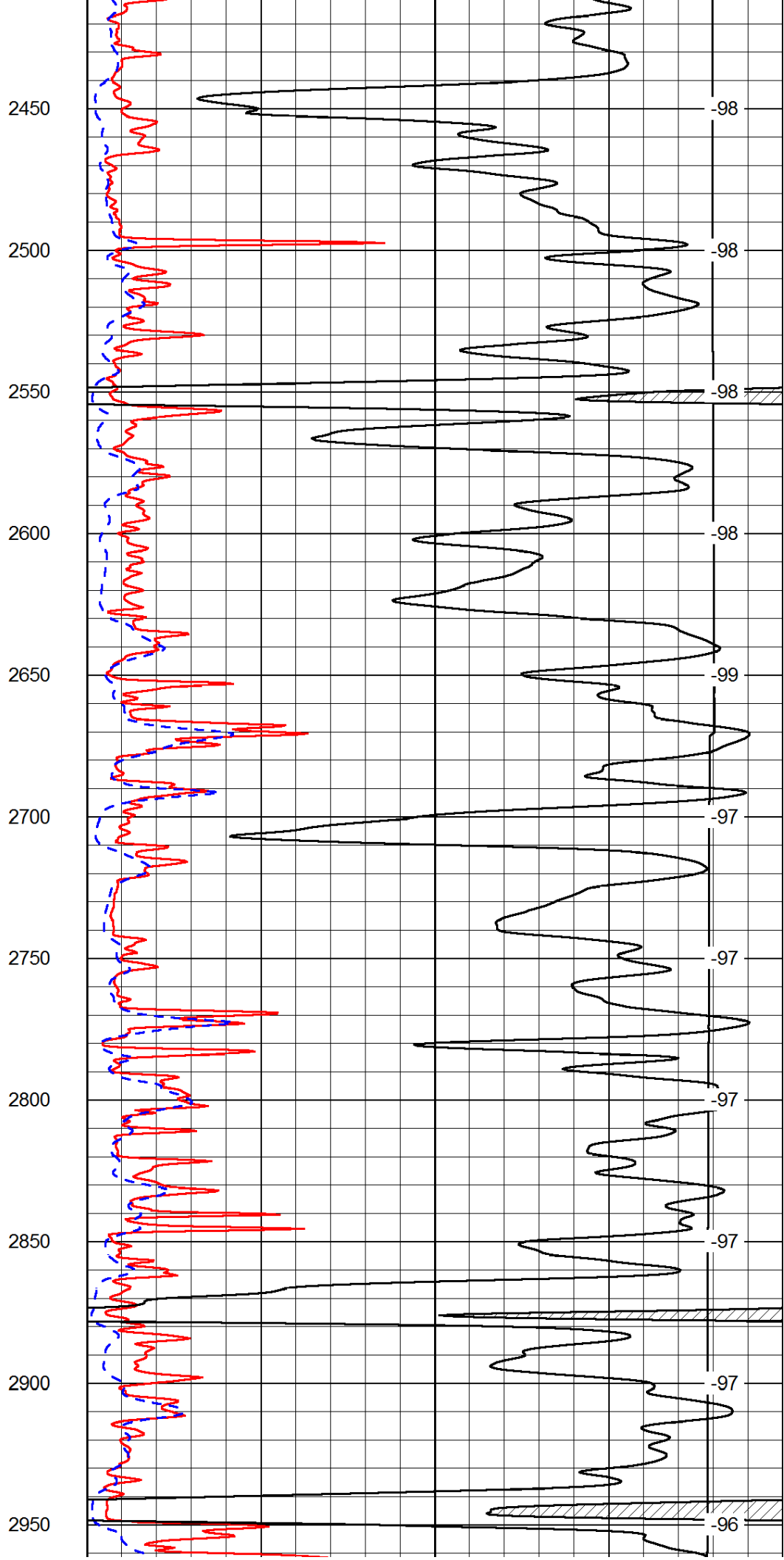
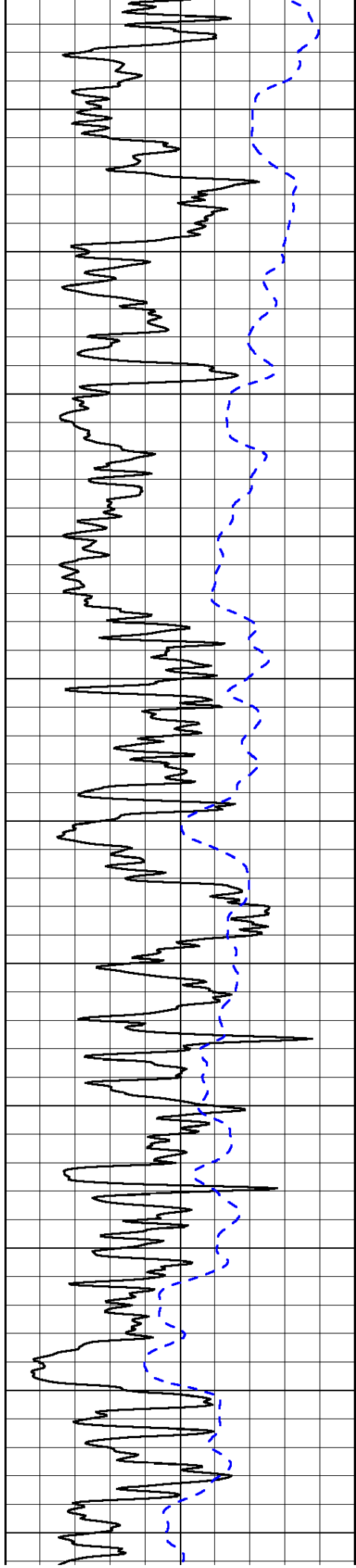
1000	Conductivity	0
15000	Line Tension	0

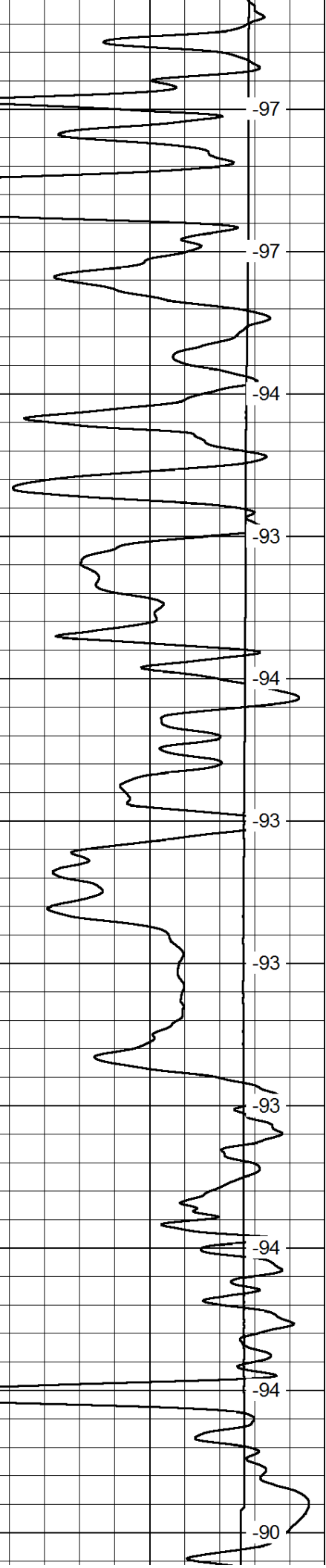
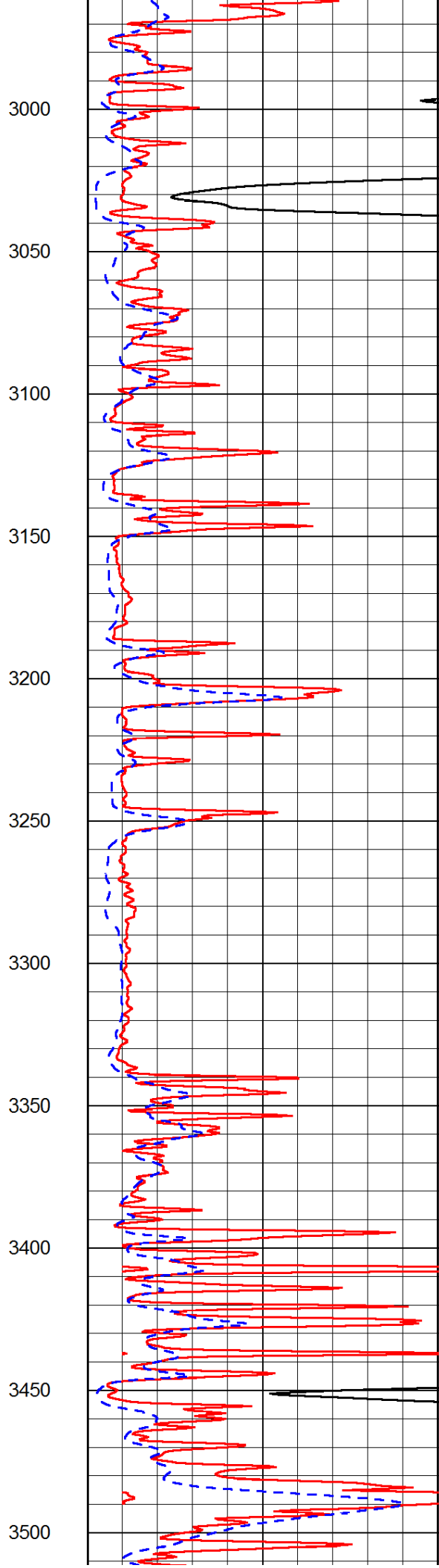
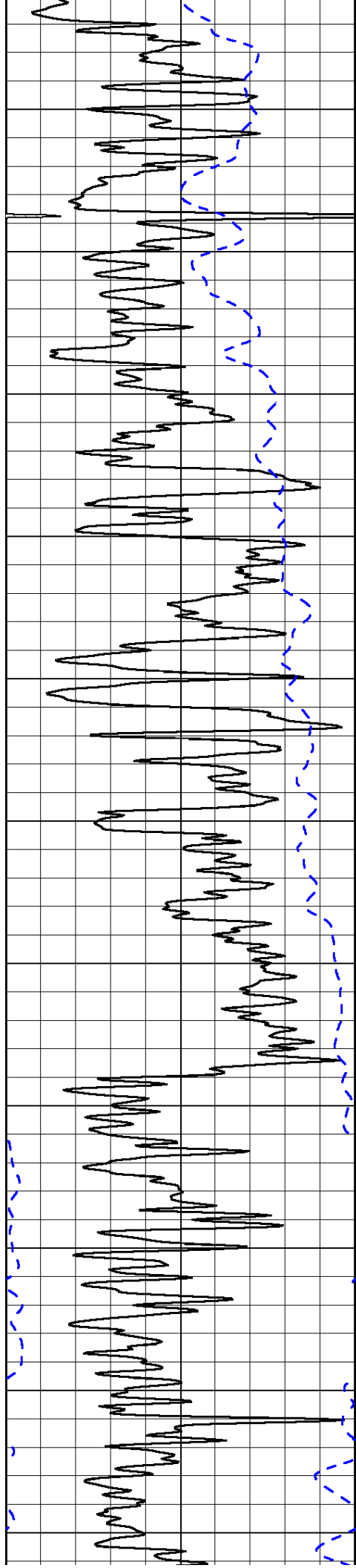
50	Shallow Resistivity	500
50	Deep Resistivity	500

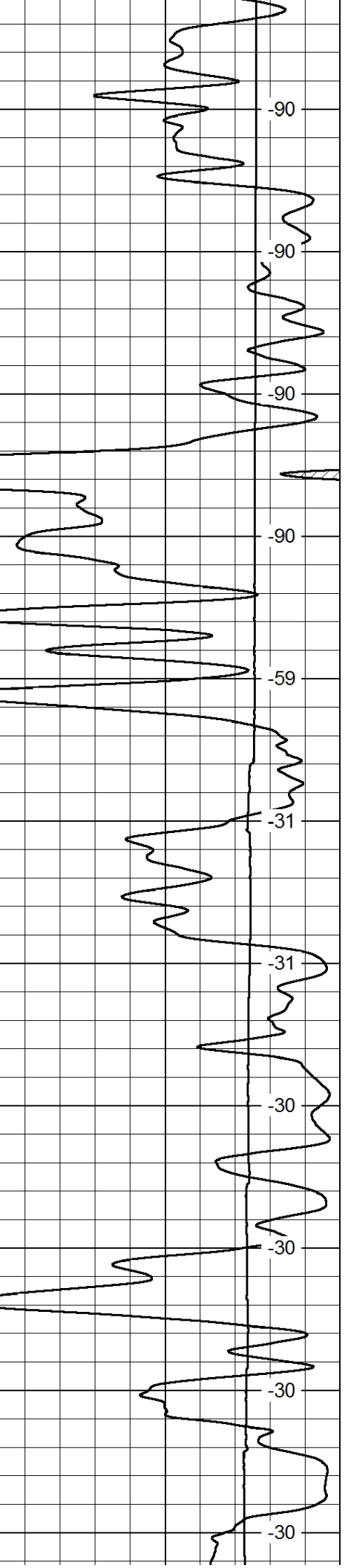
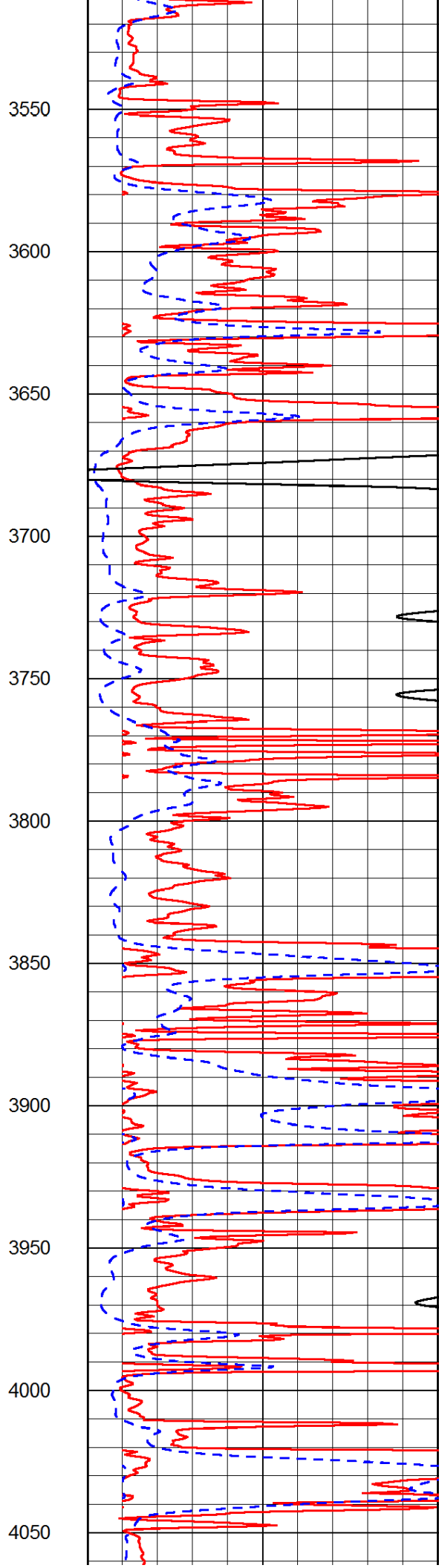
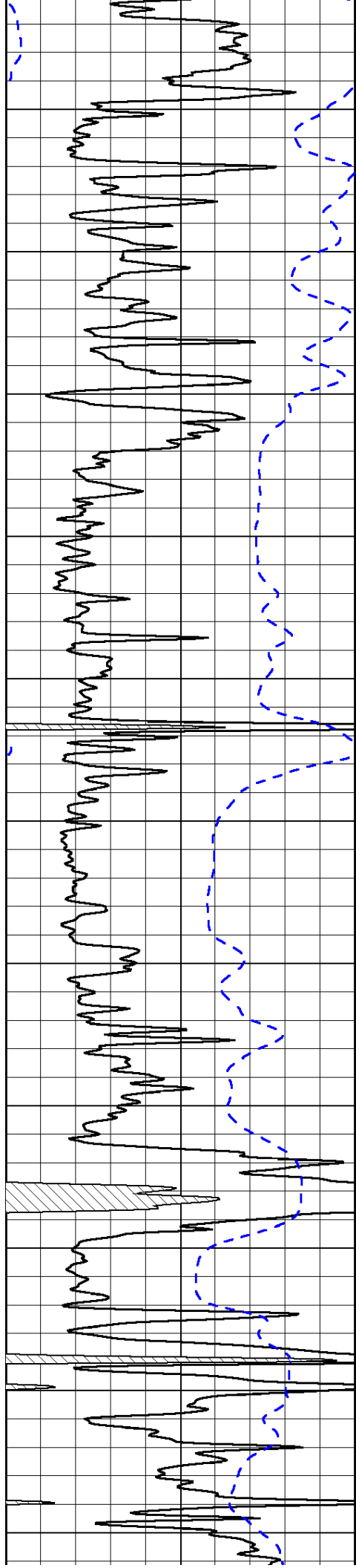


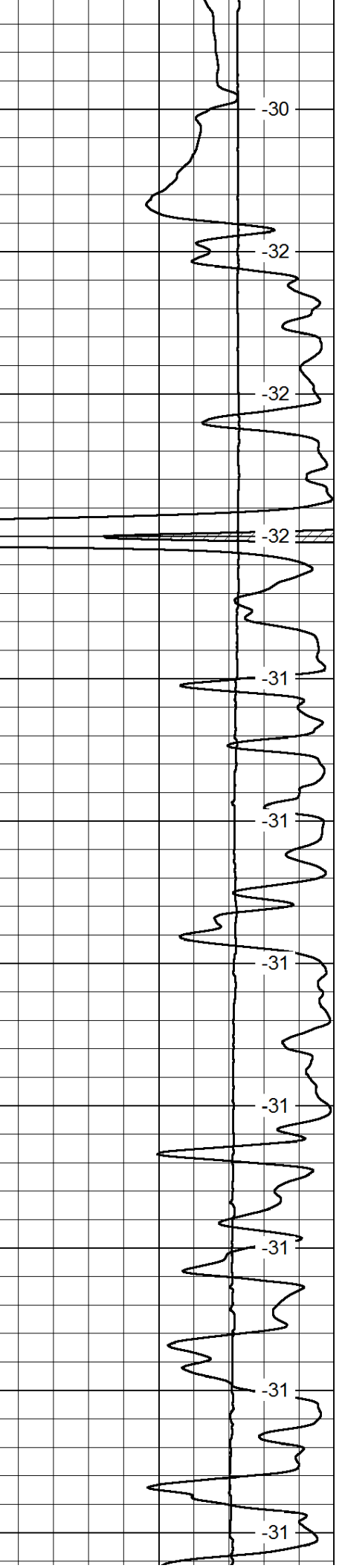
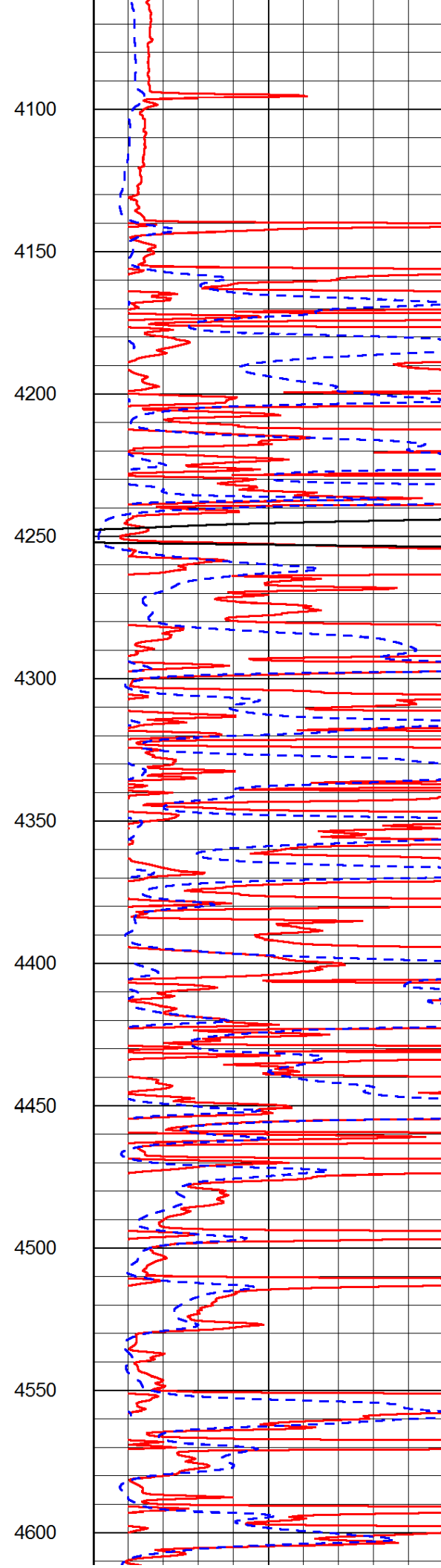
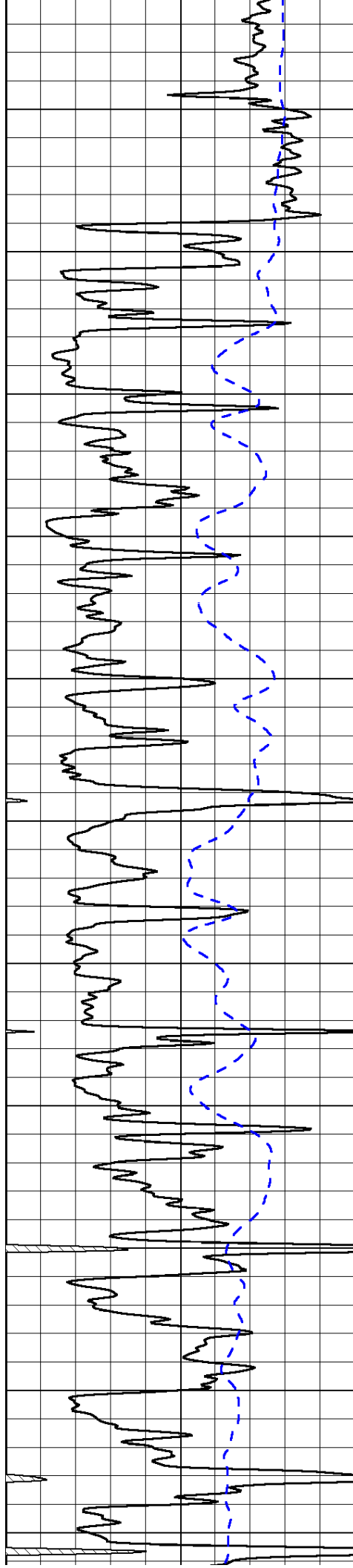


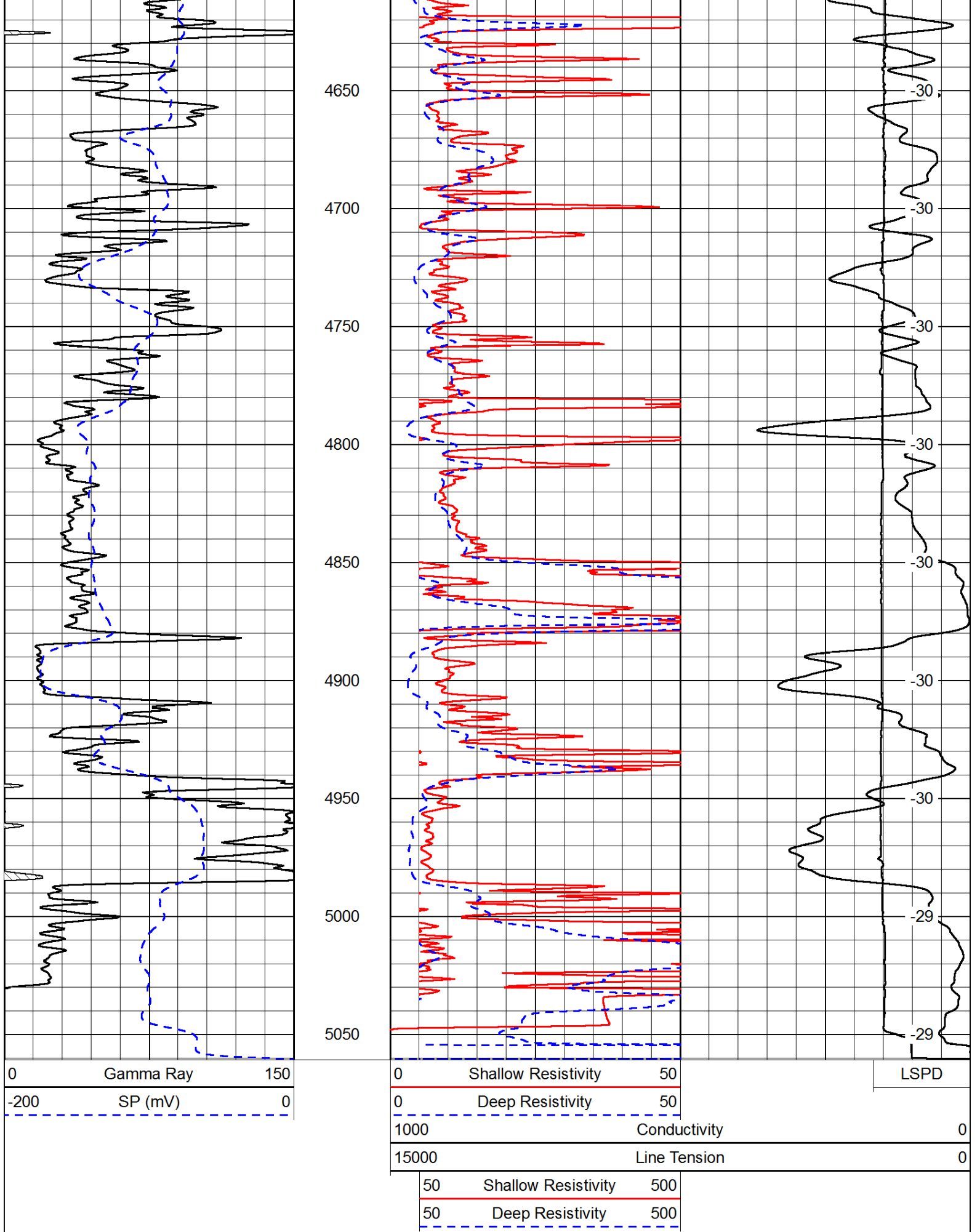










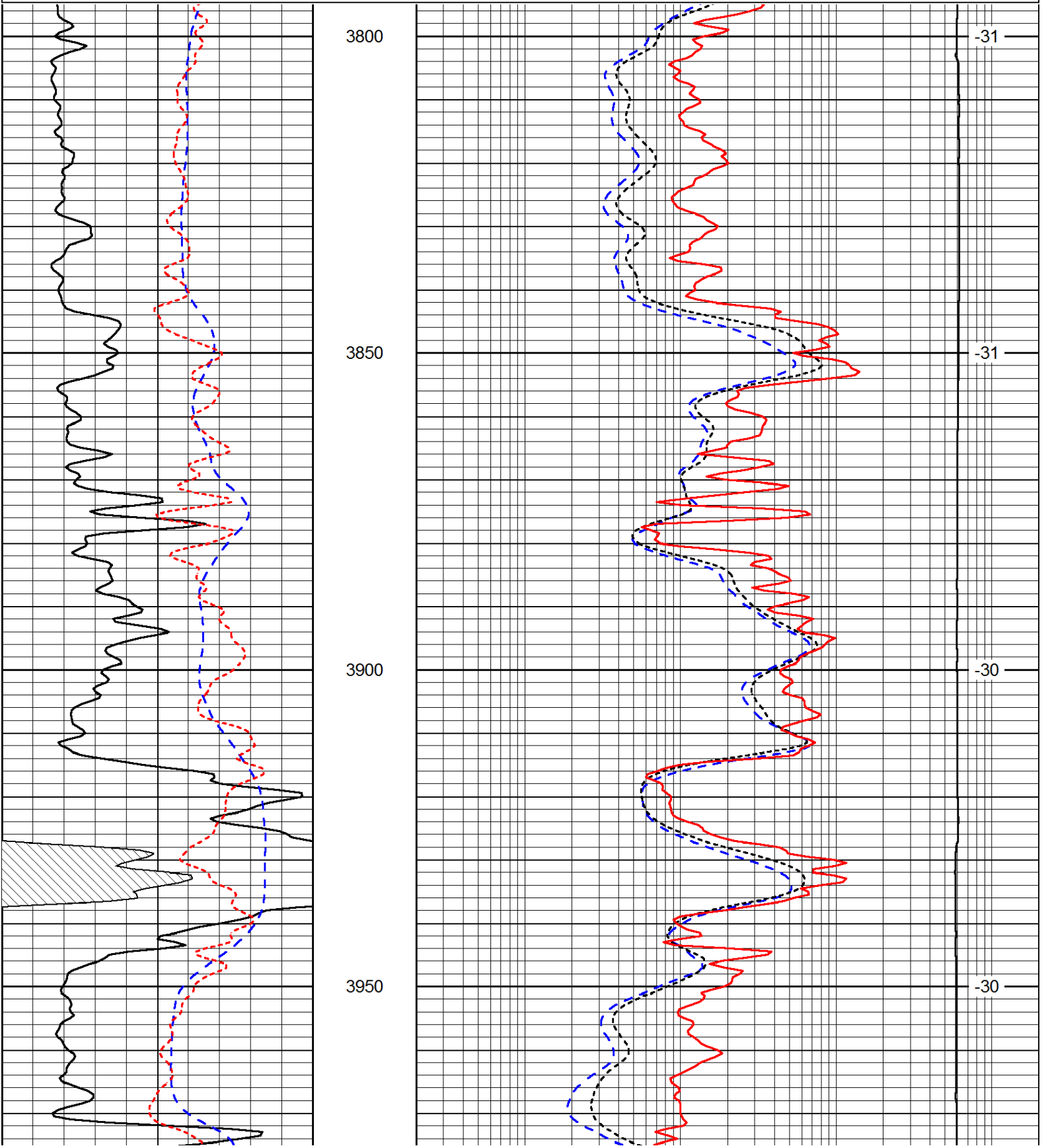


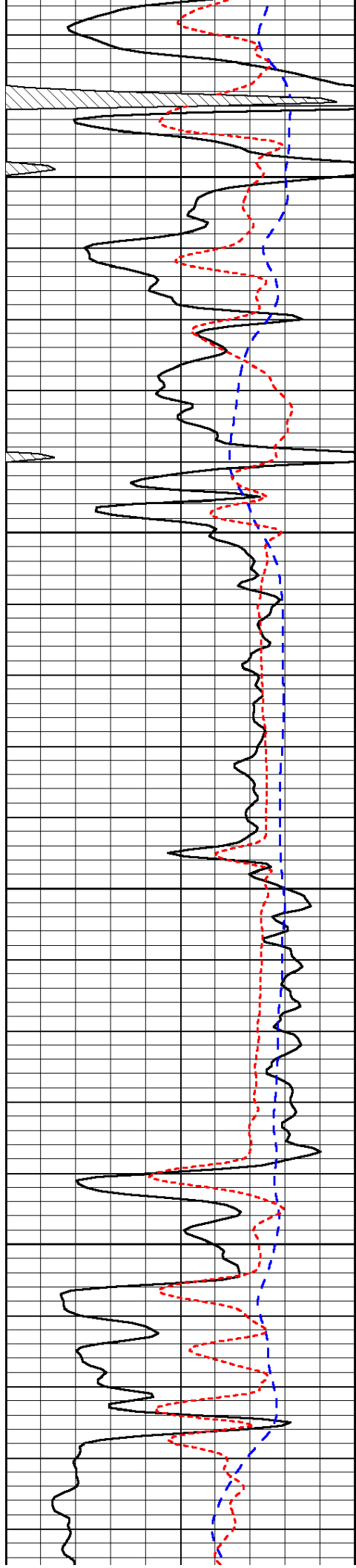
Dataset Pathname: DIL/totostk
 Presentation Format: dil
 Dataset Creation: Tue Sep 03 08:42:50 2013
 Charted by: Depth in Feet scaled 1:240

0	Gamma Ray	150
-200	SP (mV)	0
-160	RxoRt	40

0.2	Deep Resistivity	2000
0.2	Medium Resistivity	2000
0.2	Shallow Resistivity	2000
15000	Line Tension	0

LSPD



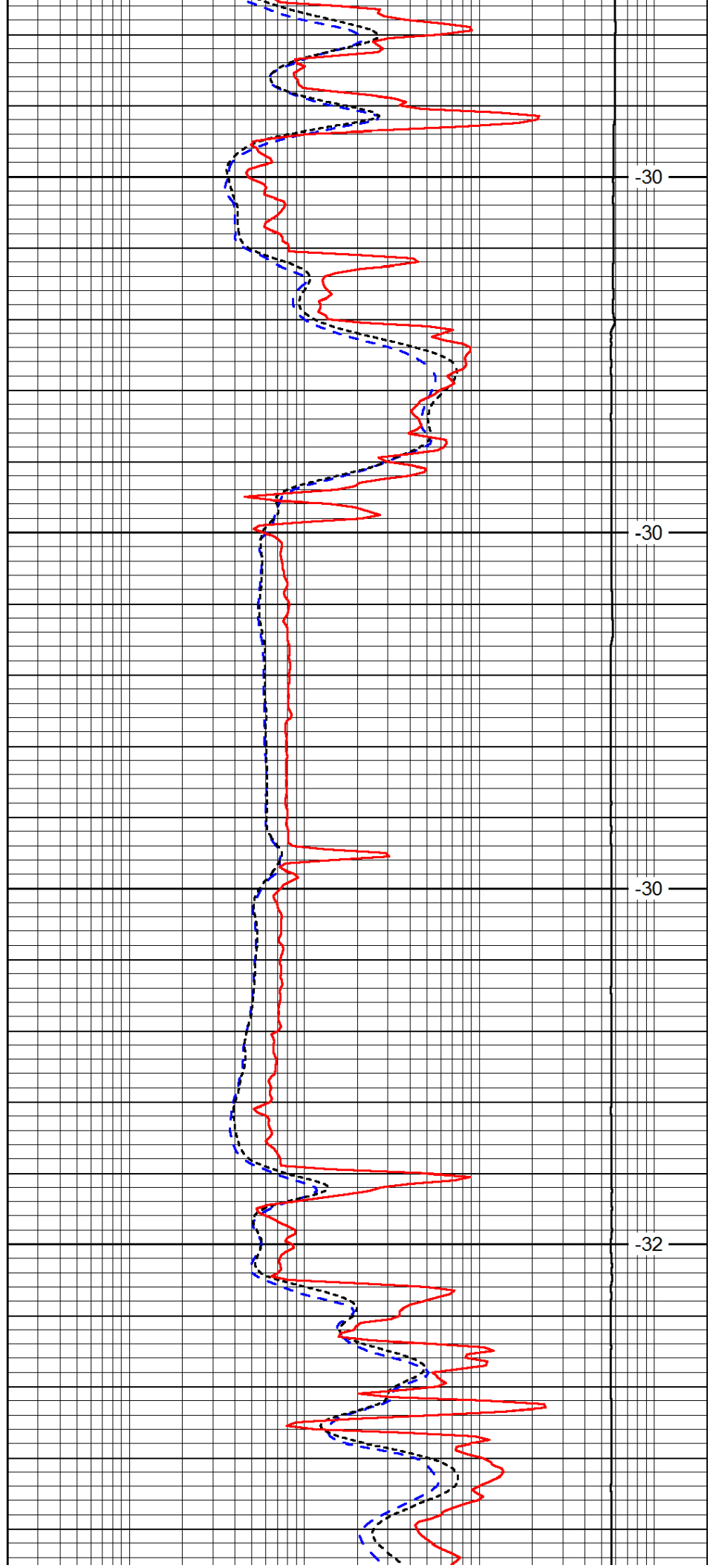


4000

4050

4100

4150

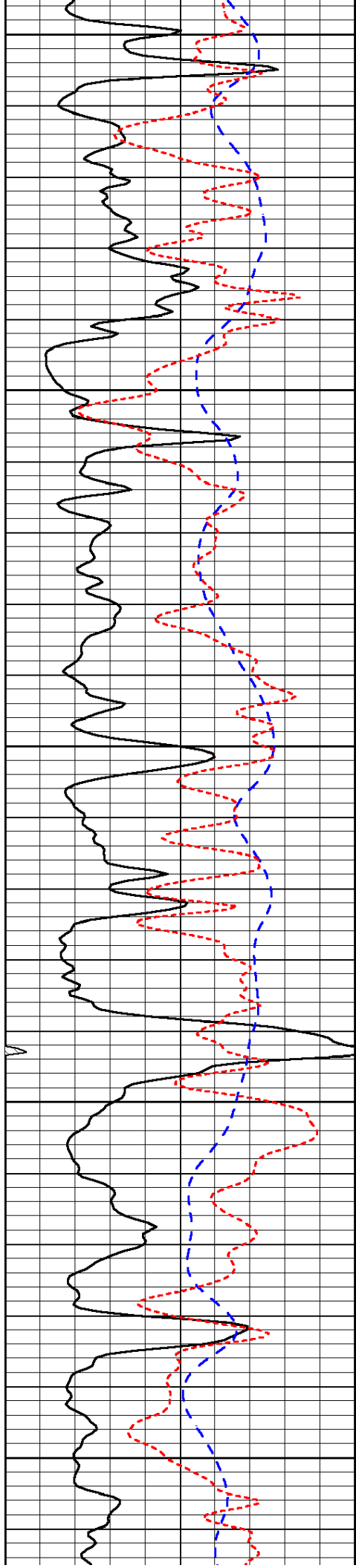


-30

-30

-30

-32



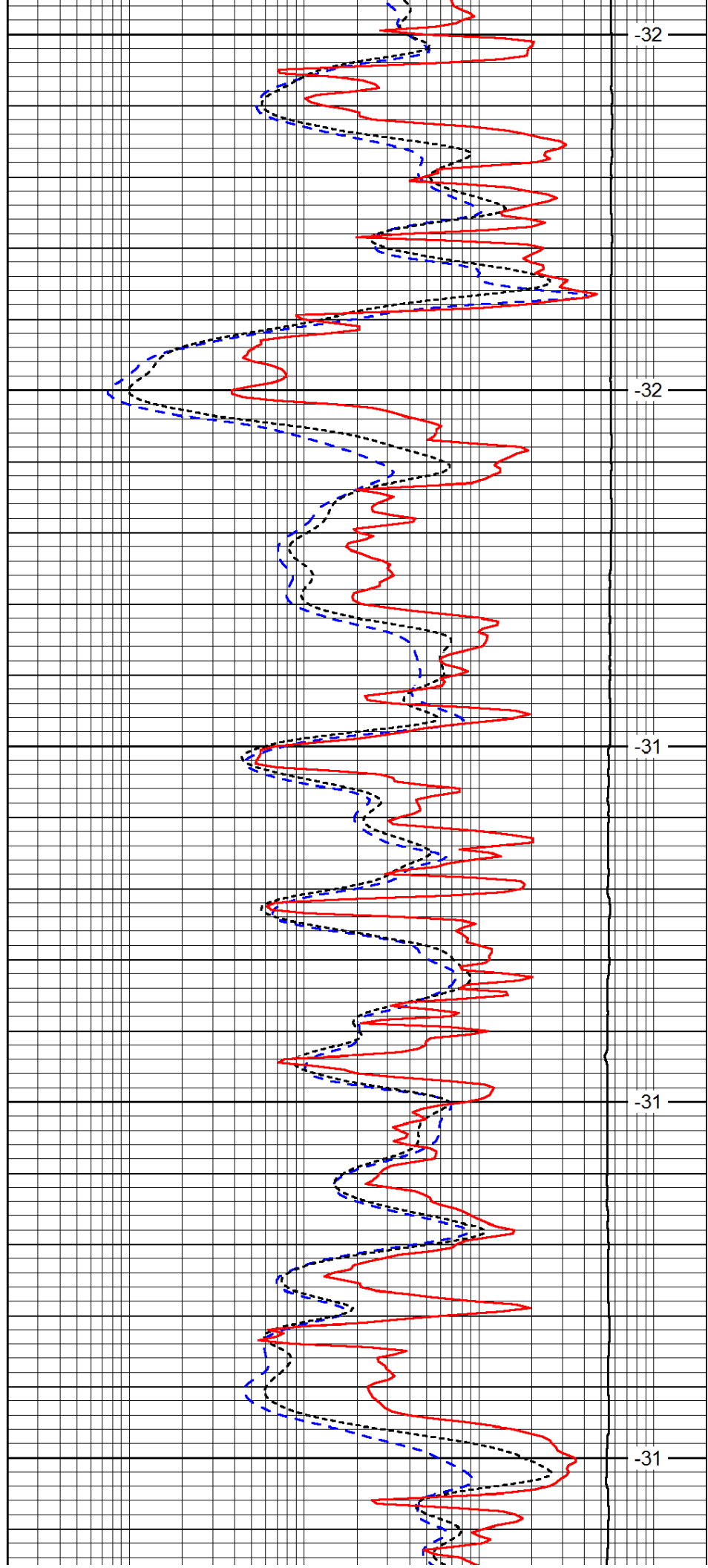
4200

4250

4300

4350

4400



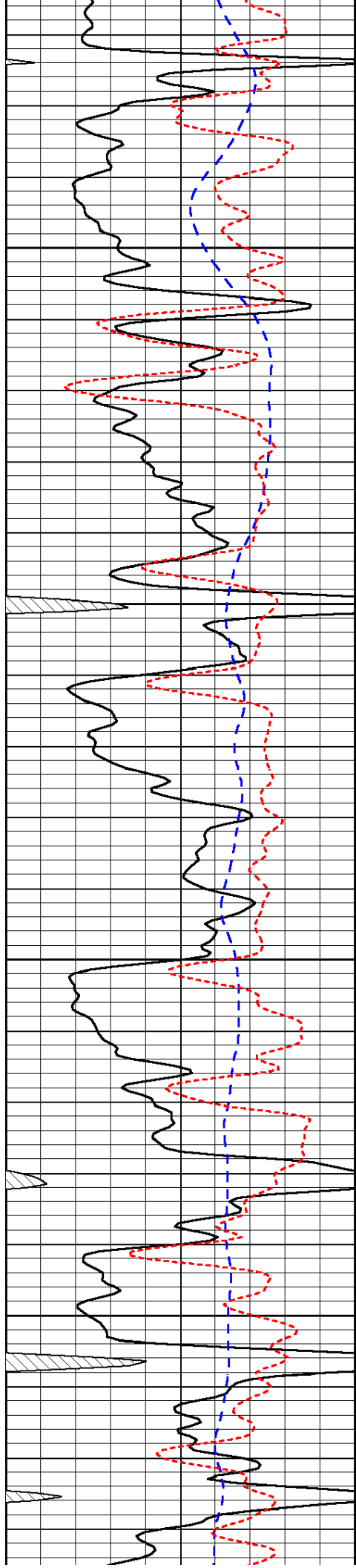
-32

-32

-31

-31

-31

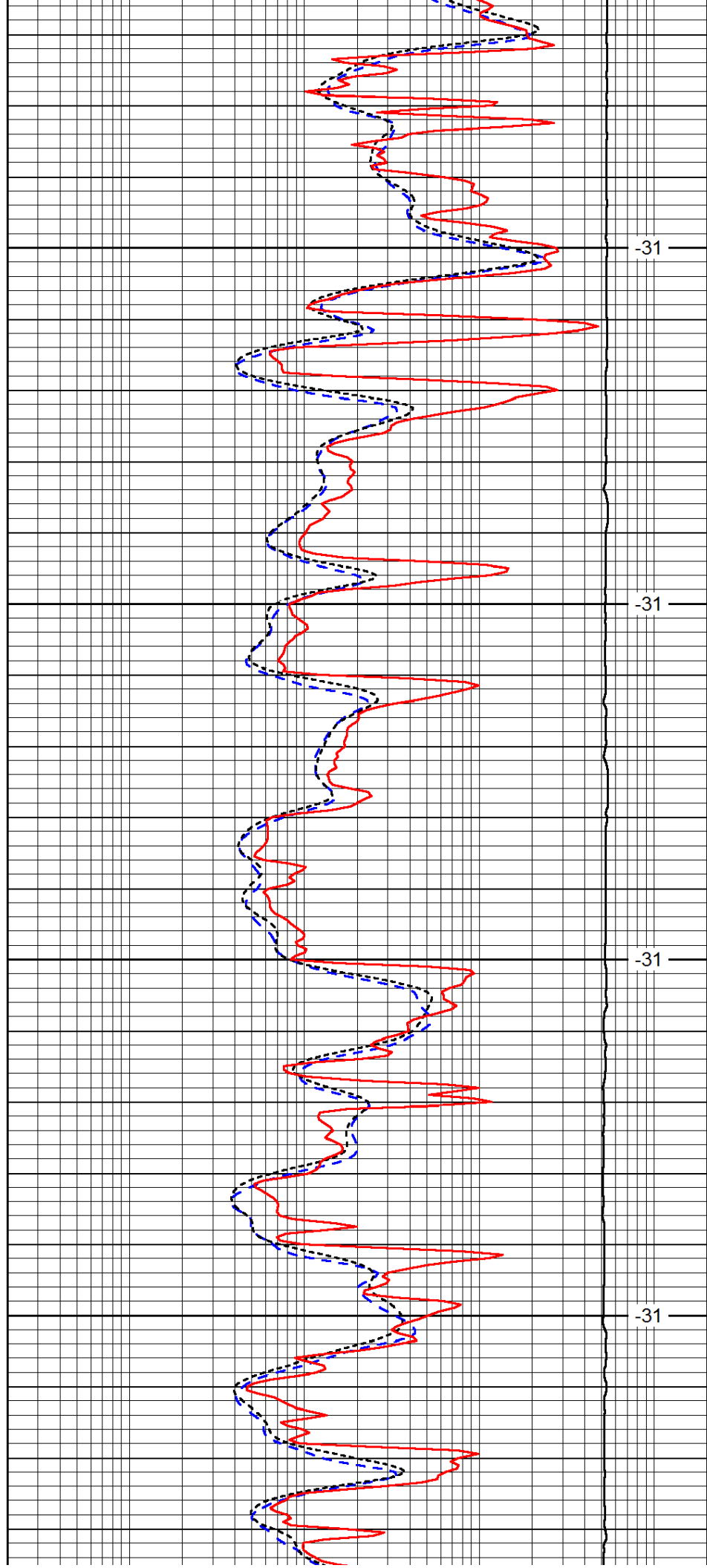


4450

4500

4550

4600

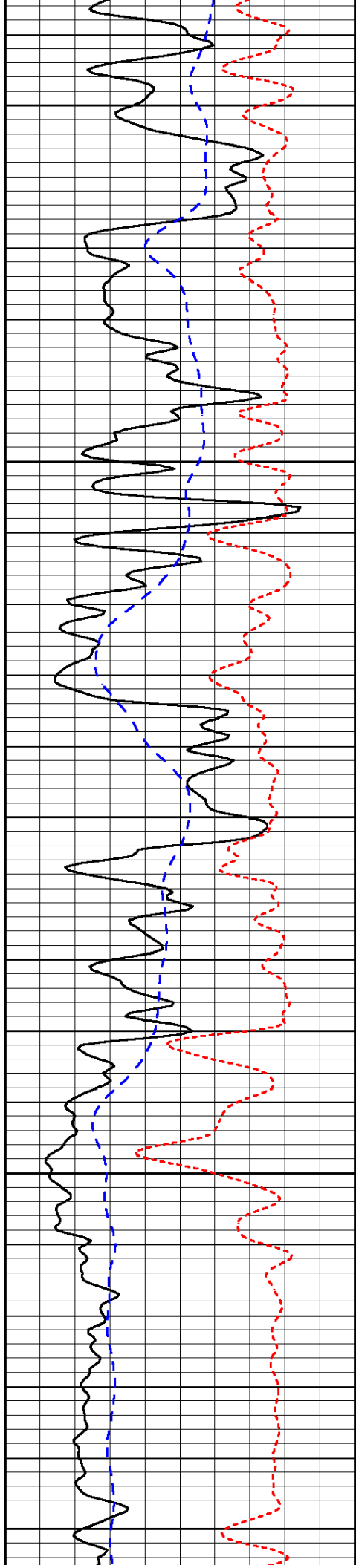


-31

-31

-31

-31



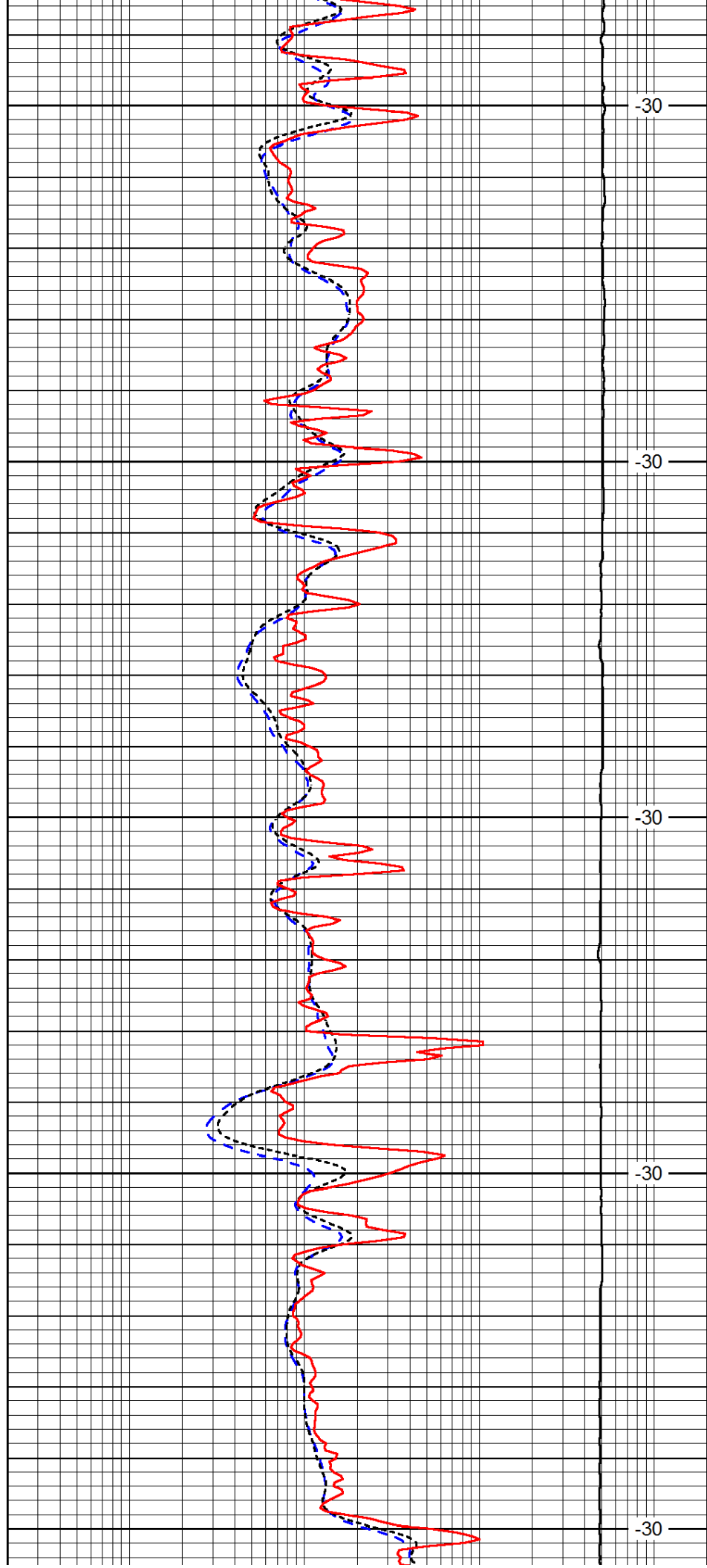
4650

4700

4750

4800

4850



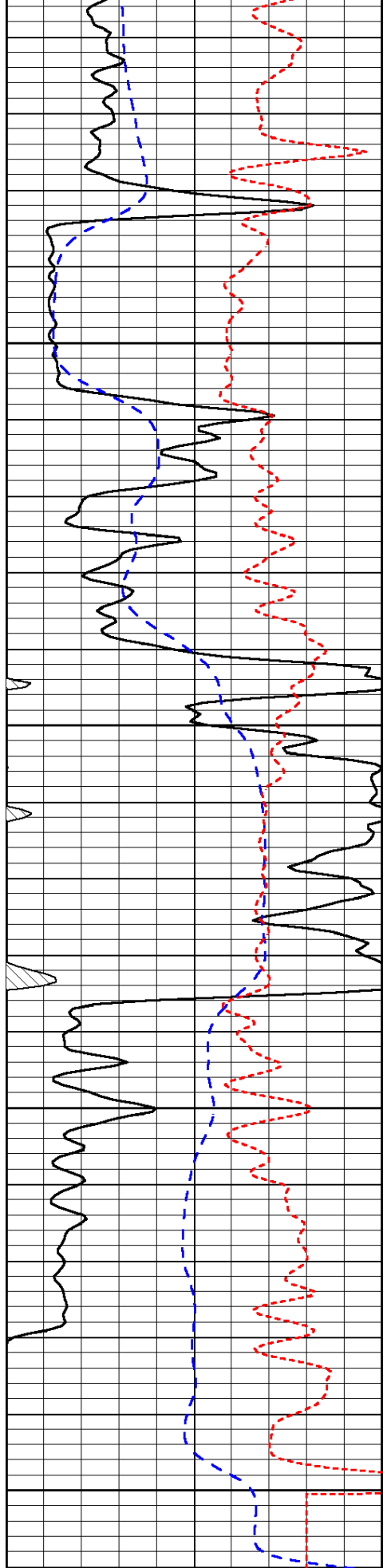
-30

-30

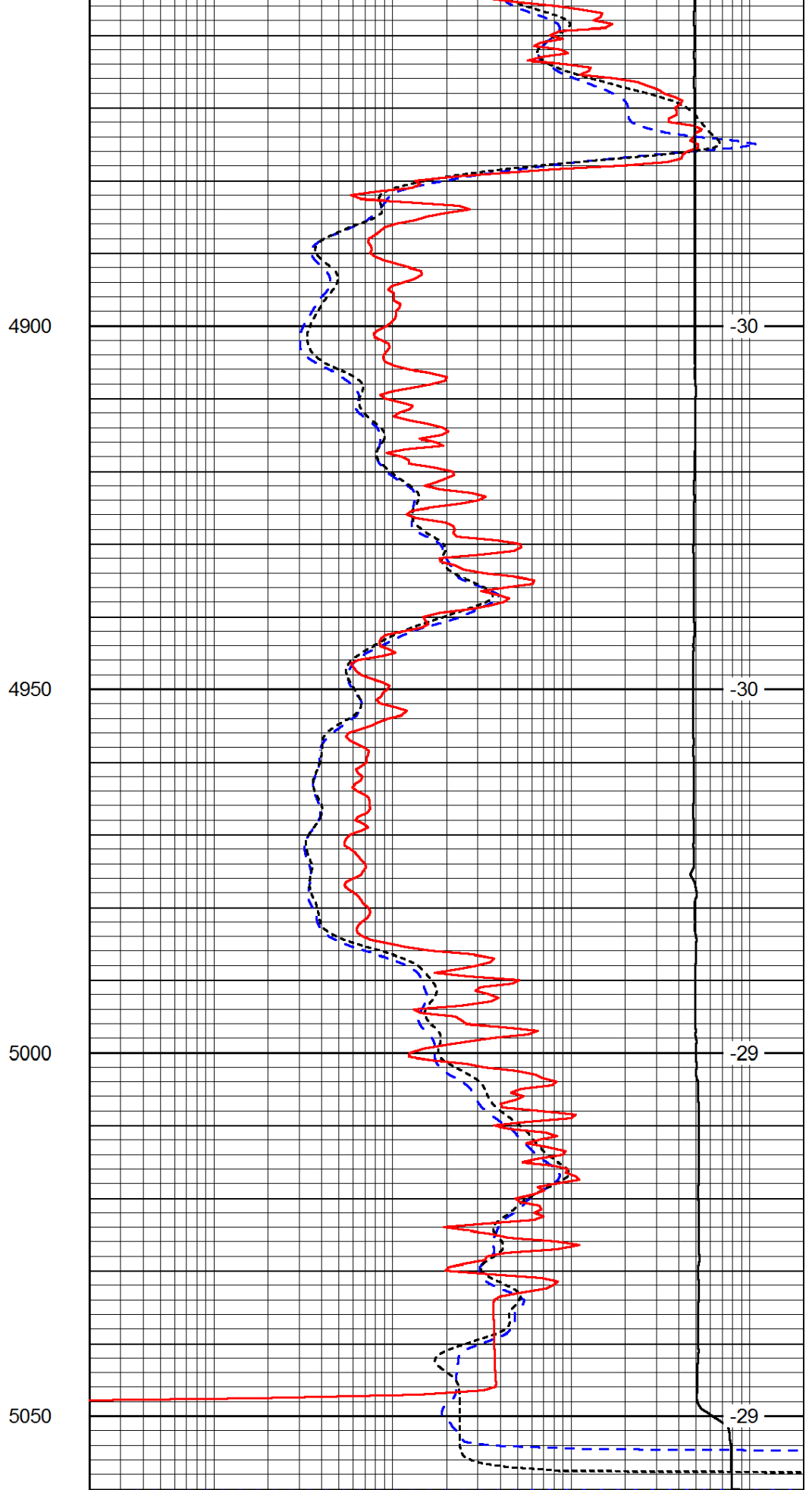
-30

-30

-30



0	Gamma Ray	150
-200	SP (mV)	0
-160	RxoRt	40



0.2	Deep Resistivity	2000
0.2	Medium Resistivity	2000
0.2	Shallow Resistivity	2000

15000

Line Tension

0

LSPD