



Pioneer Energy Services

Borehole Compensated Sonic Log

API No. 15-035-24520-00-00

Company: Alton Oil, LLC
 Well: Steffen Unit #3
 Field: Posey Northeast
 County: Cowley
 State: Kansas

Location: N2 N2 N2 NE
 100' FNL / 1320' FEL

Other Services: CNL/CDL/DIL
 MEL/FRAC

Permanent Datum: Ground Level
 Log Measured From: Kelly Bushing
 Drilling Measured From: Kelly Bushing

Sec: 16 Twp: 33S Rge: 4E
 Elevation: 1197
 8 Ft. Above Perm. Datum

K.B. 1205
 D.F. 1197
 G.L. 1197

Date: 9/13/2013

Run Number: Two

Type Log: BHC Sonic

Depth Driller: 3410

Depth Logger: 3410

Bottom Logged Interval: 3399

Top Logged Interval: 200

Type Fluid In Hole: Chemical

Salinity, PPM CL: 1000

Density: 9.1

Level: Full

Max. Rec. Temp. F: 110

Operating Rig Time: 5 Hours

Equipment -- Location: 17 Hays

Recorded By: R. Barnhart

Witnessed By: Tom Blair

Borehole Record				Casing Record			
Run No.	Bit	From	To	Size	Wgt.	From	To
One	12.25	00	212	8.625	23#	00	212
Two	7.875	212	TD				

<<< Fold Here >>>

All interpretations are opinions based on inferences from electrical or other measurements and we cannot and do not guarantee the accuracy or correctness of any interpretation, and we shall not, except in the case of gross or willful negligence on our part, be liable or responsible for any loss, costs, damages, or expenses incurred or sustained by anyone resulting from any interpretation made by any of our officers, agents or employees. These interpretations are also subject to our general terms and conditions set out in our current Price Schedule.

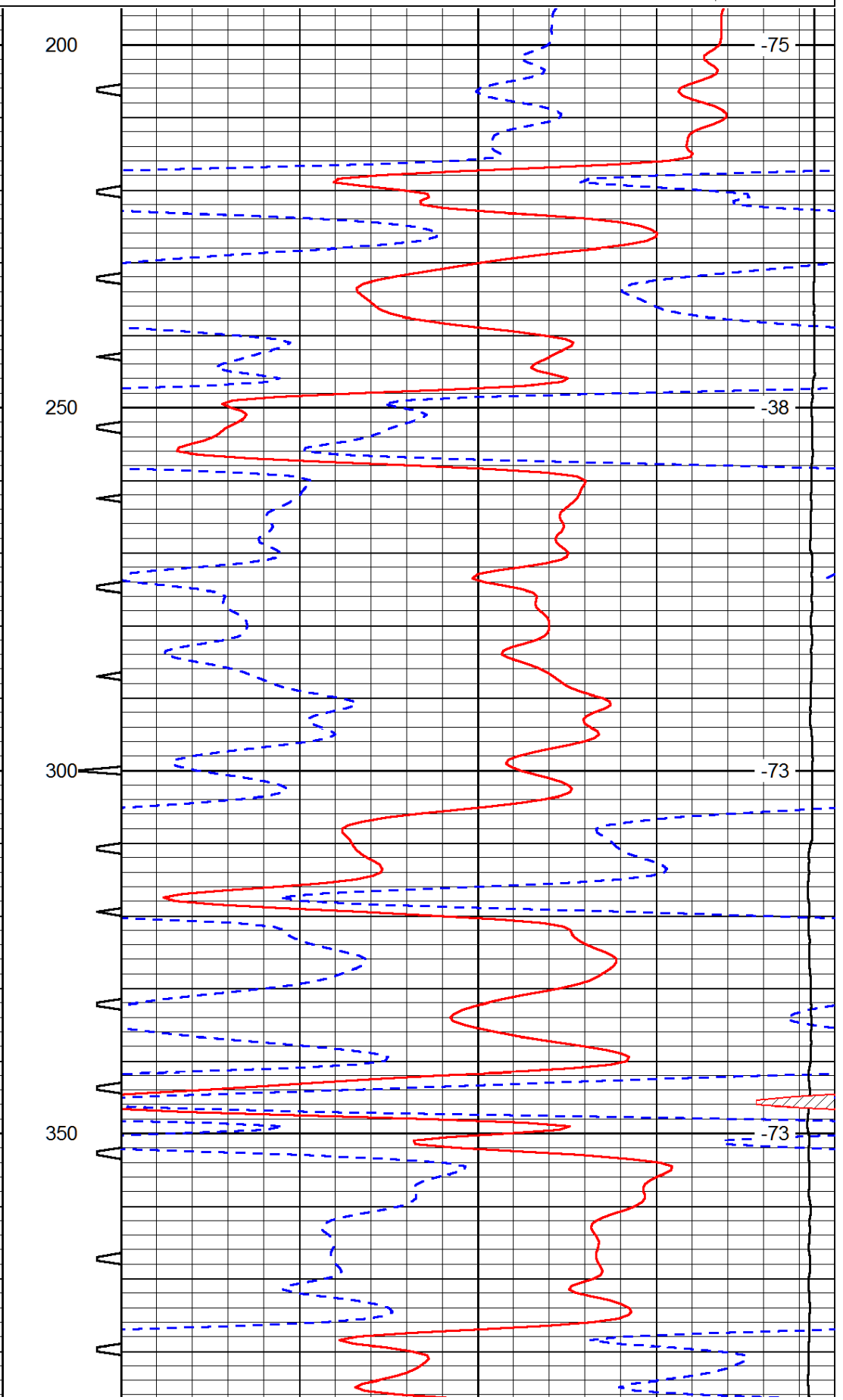
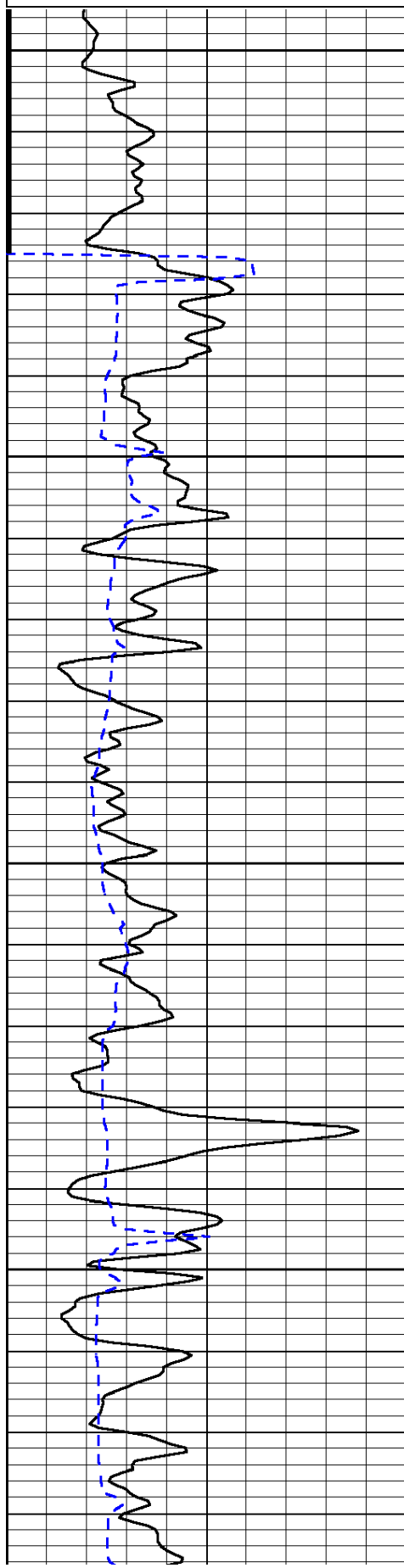
Comments

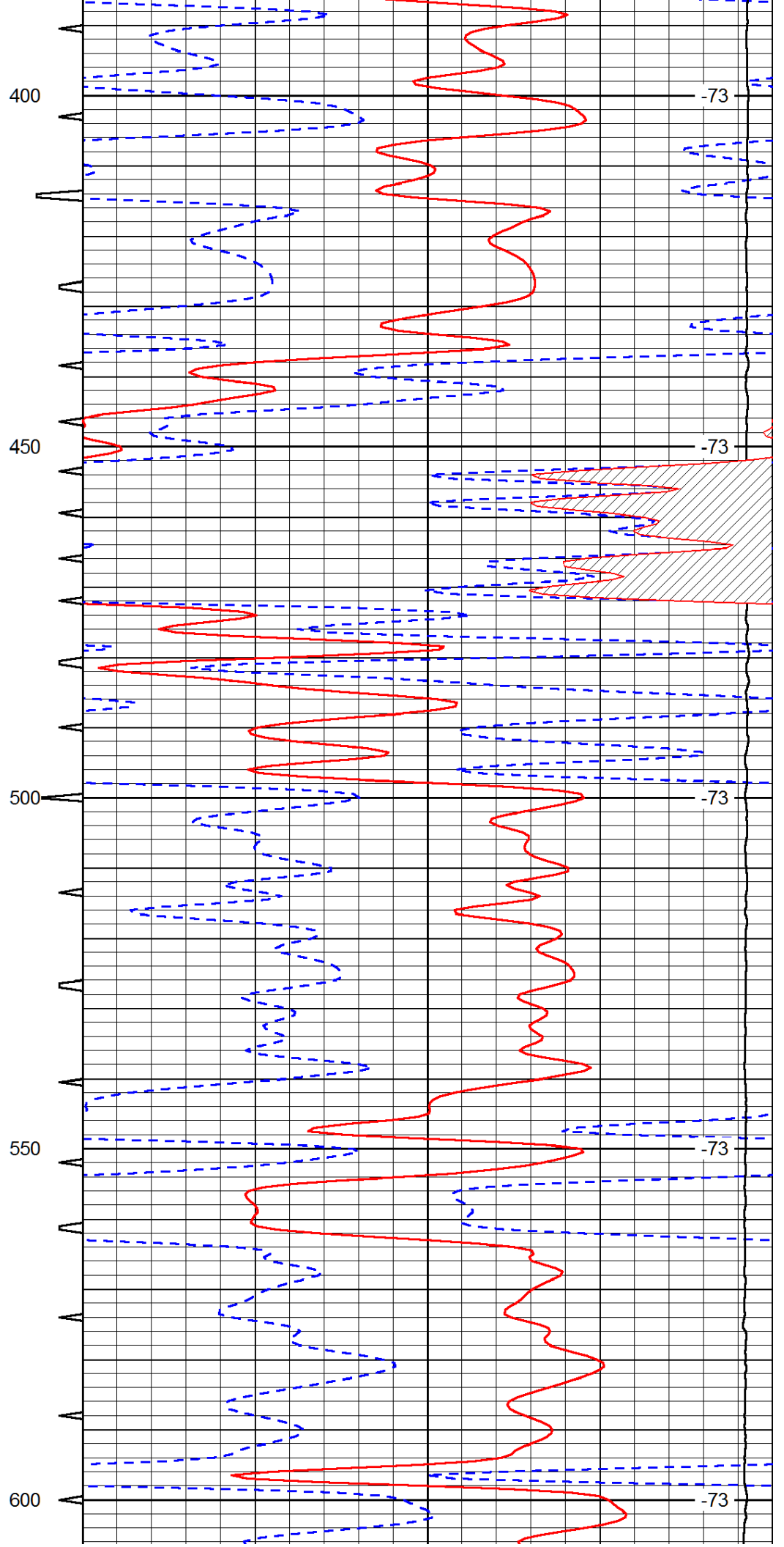
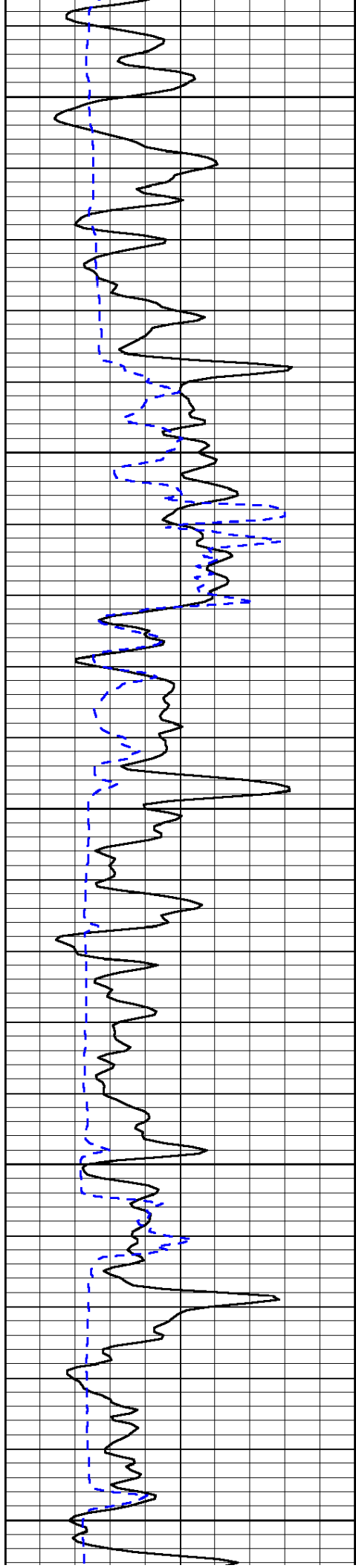
Thank you for using Log-Tech, Inc.
 (785) 625-3858

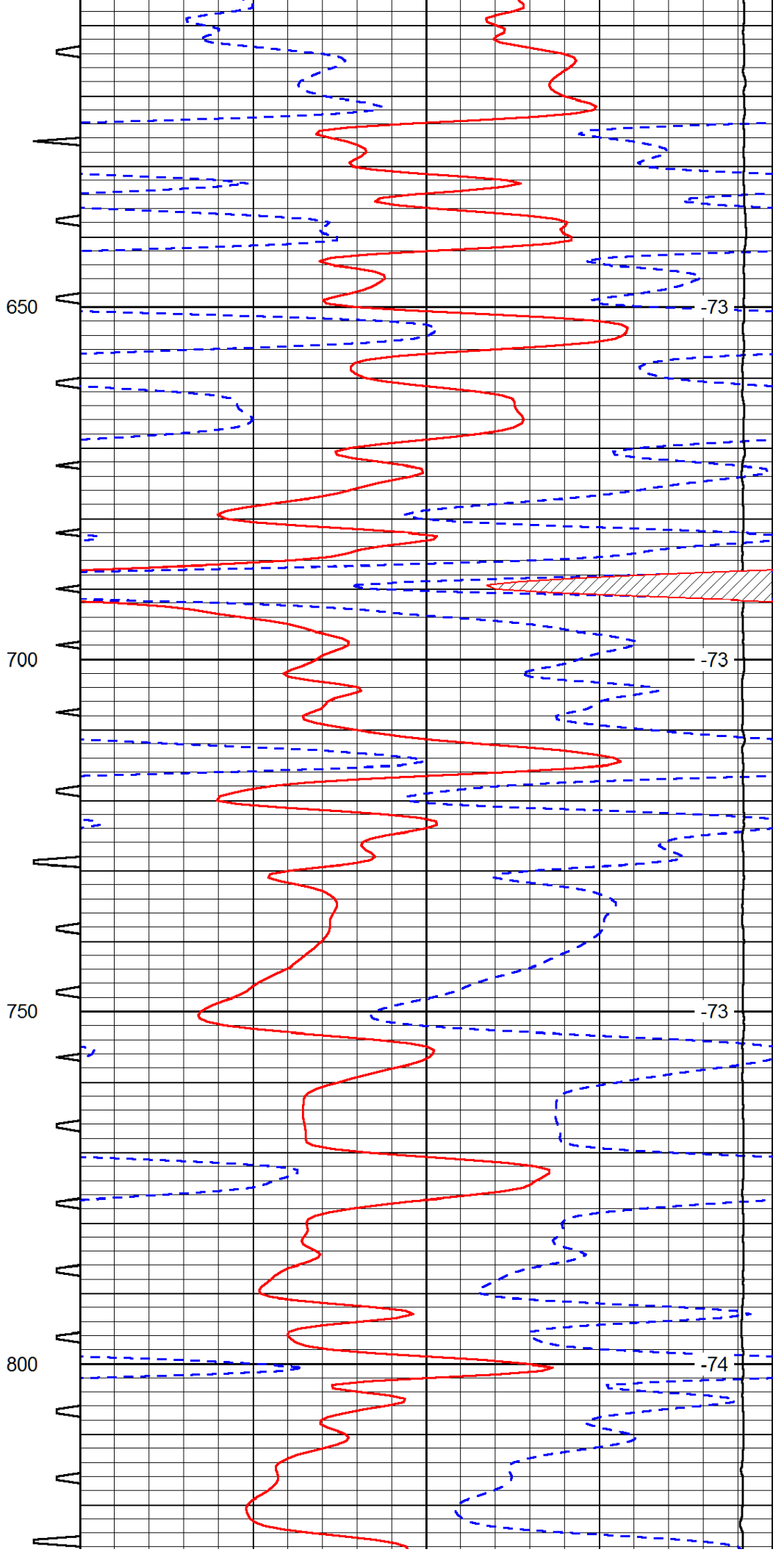
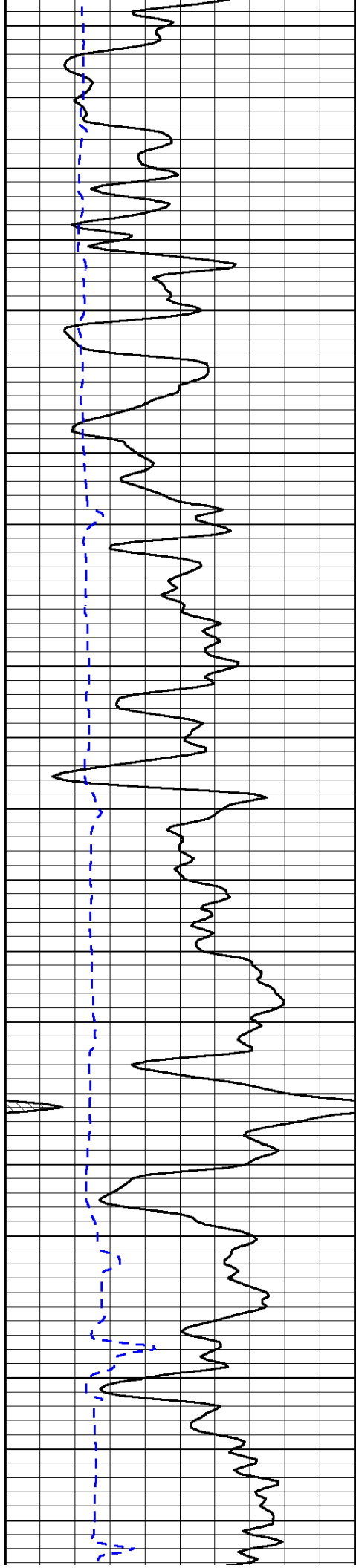
Winfield, KS:
 S of town: E at Super 8, 2S to 202 Rd., 1/4E, S into

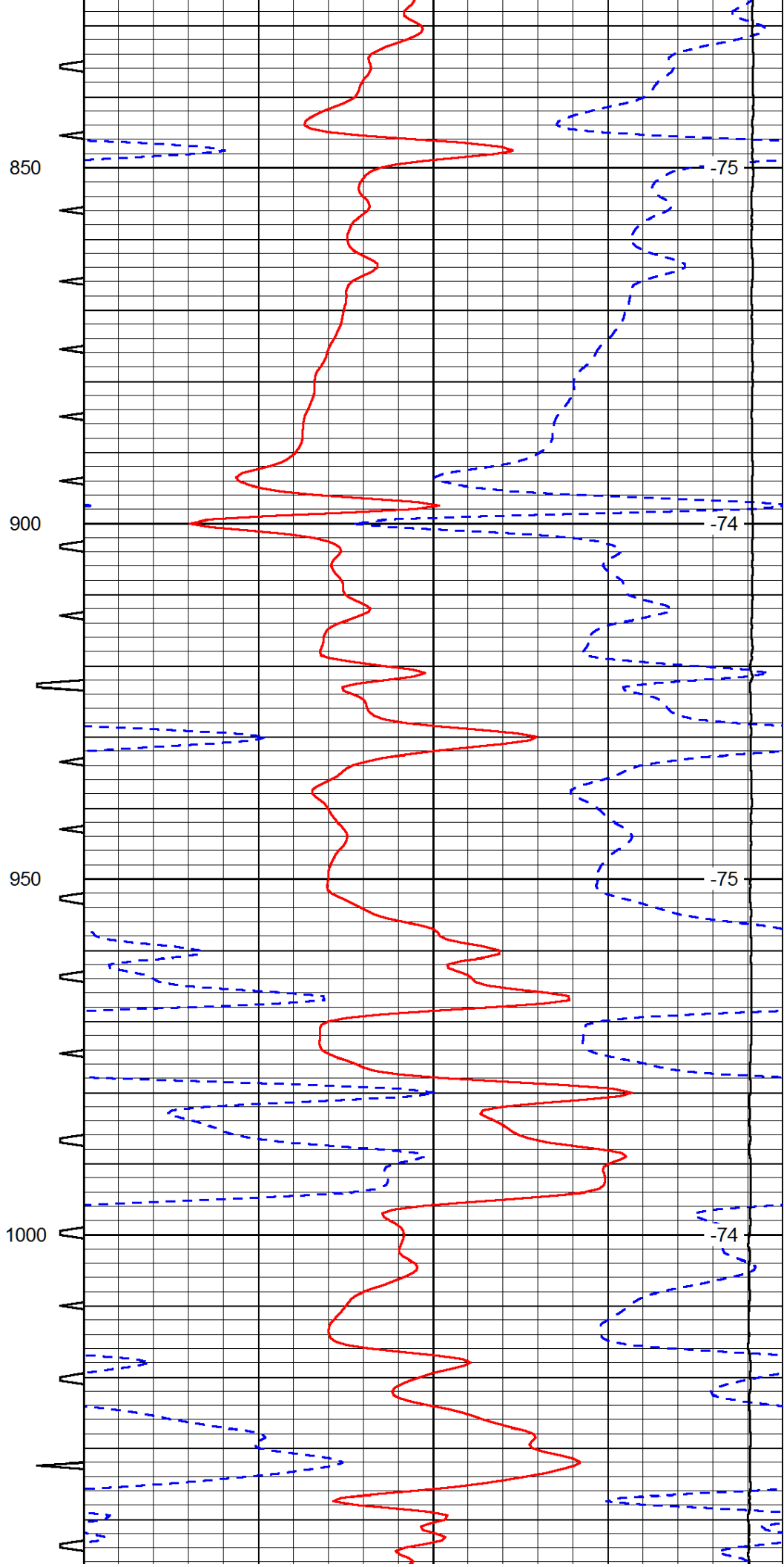
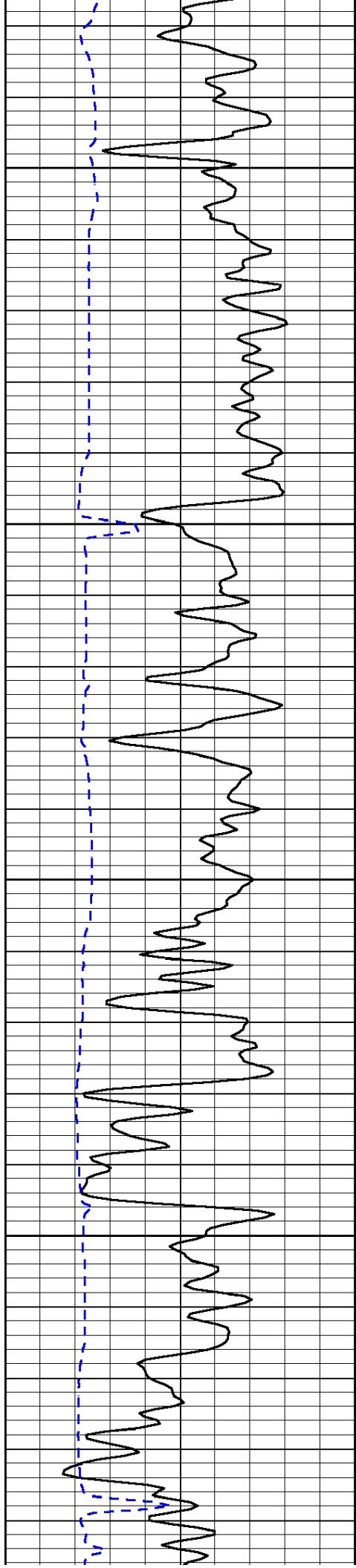
Database File: alton_hd.db
 Dataset Pathname: dil/altmain
 Presentation Format: sonic
 Dataset Creation: Fri Sep 13 19:07:49 2013
 Charted by: Depth in Feet scaled 1:240

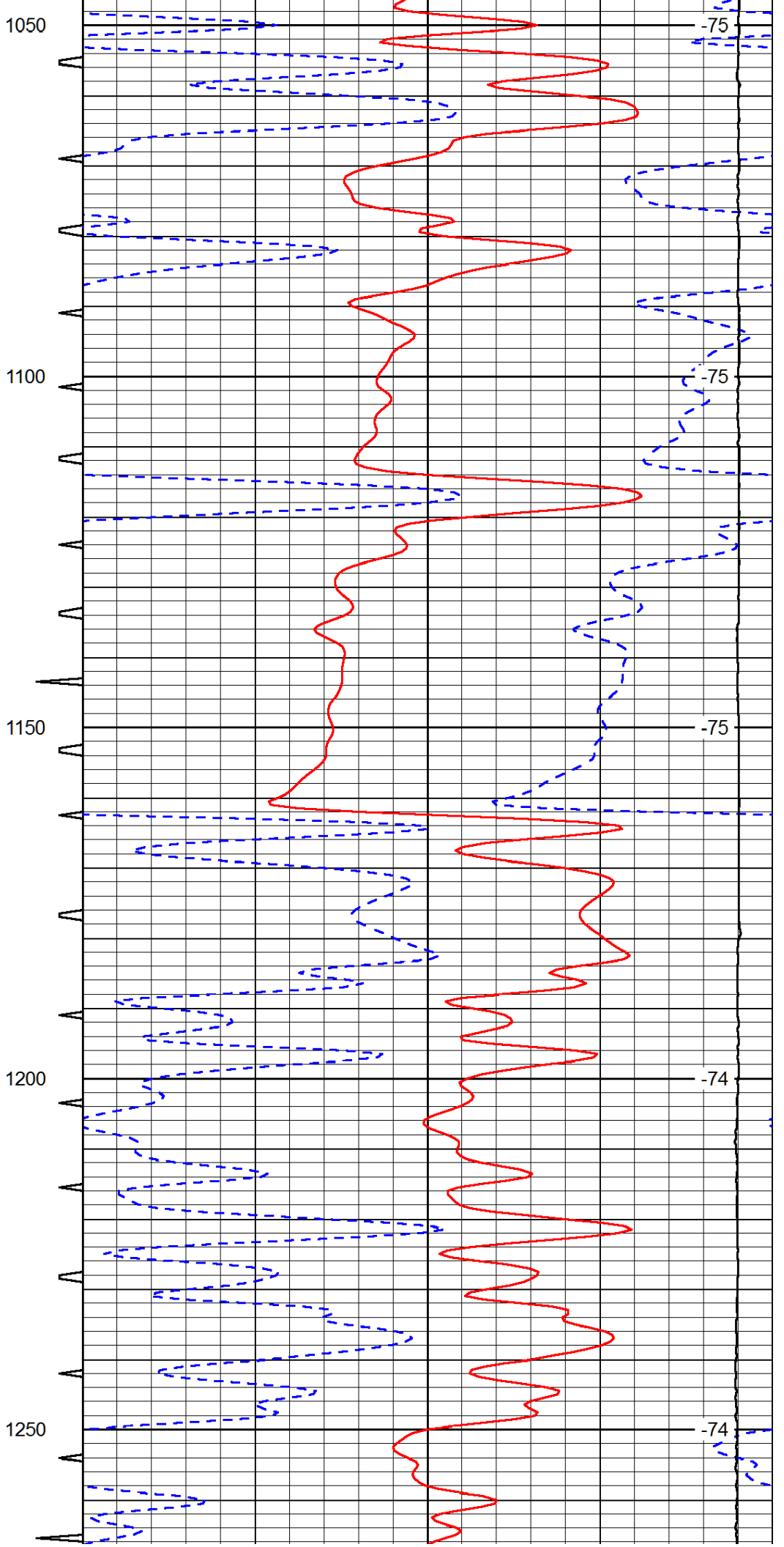
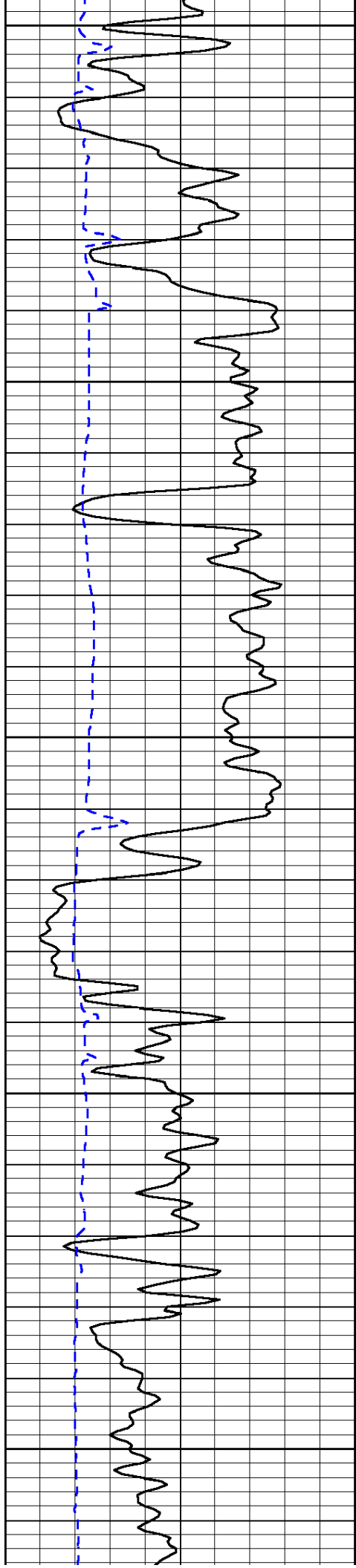
0	Gamma Ray (GAPI)	150	Sonic Int	140	Delta Time (usec/ft) (usec/ft)	40
150	Gamma Ray (GAPI)	300	5 (msec) 0	30	Sonic Porosity (pu)	-10
6	dCAL (in)	16		15000	LTEN (lb) (lb)	0
						LSPD (ft/min)

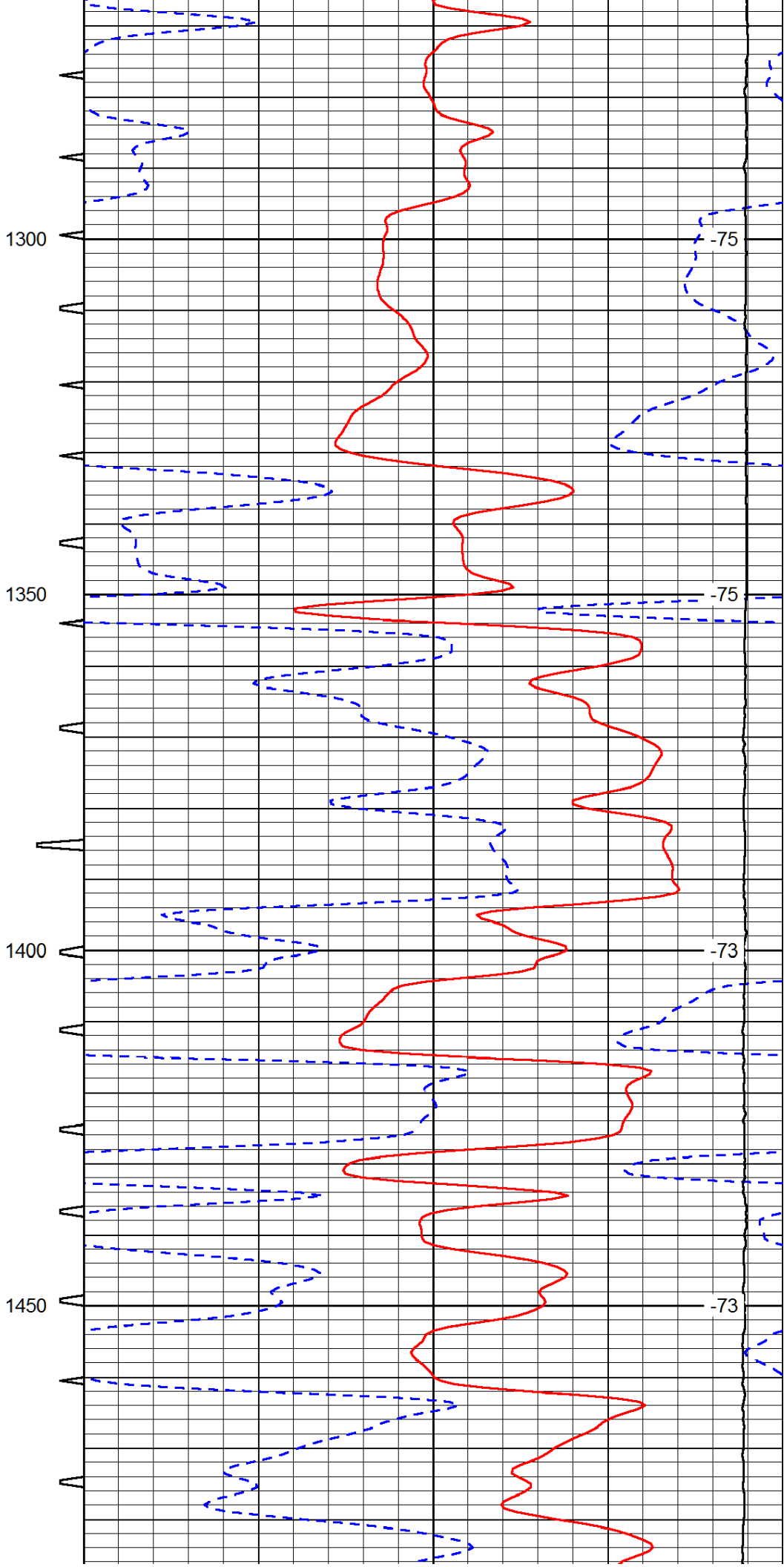
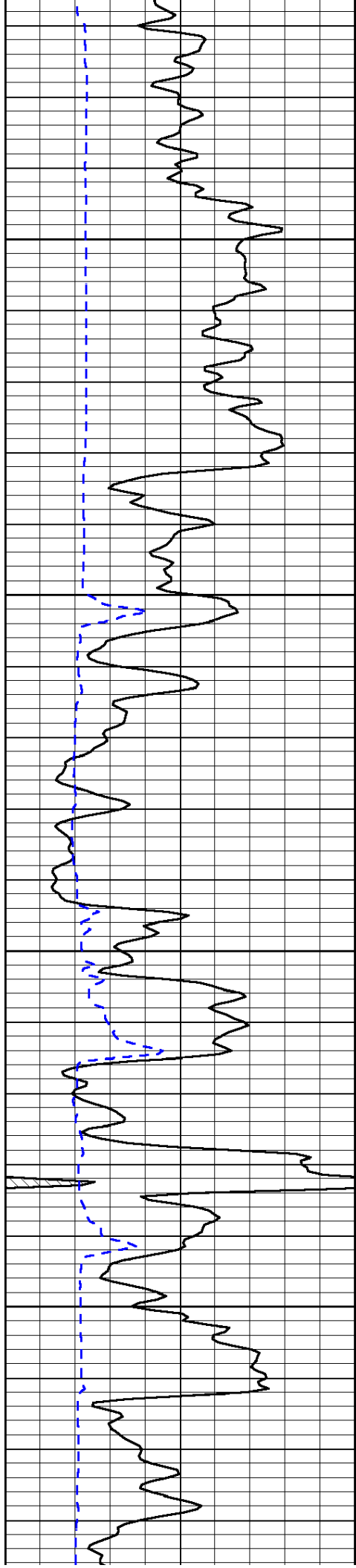


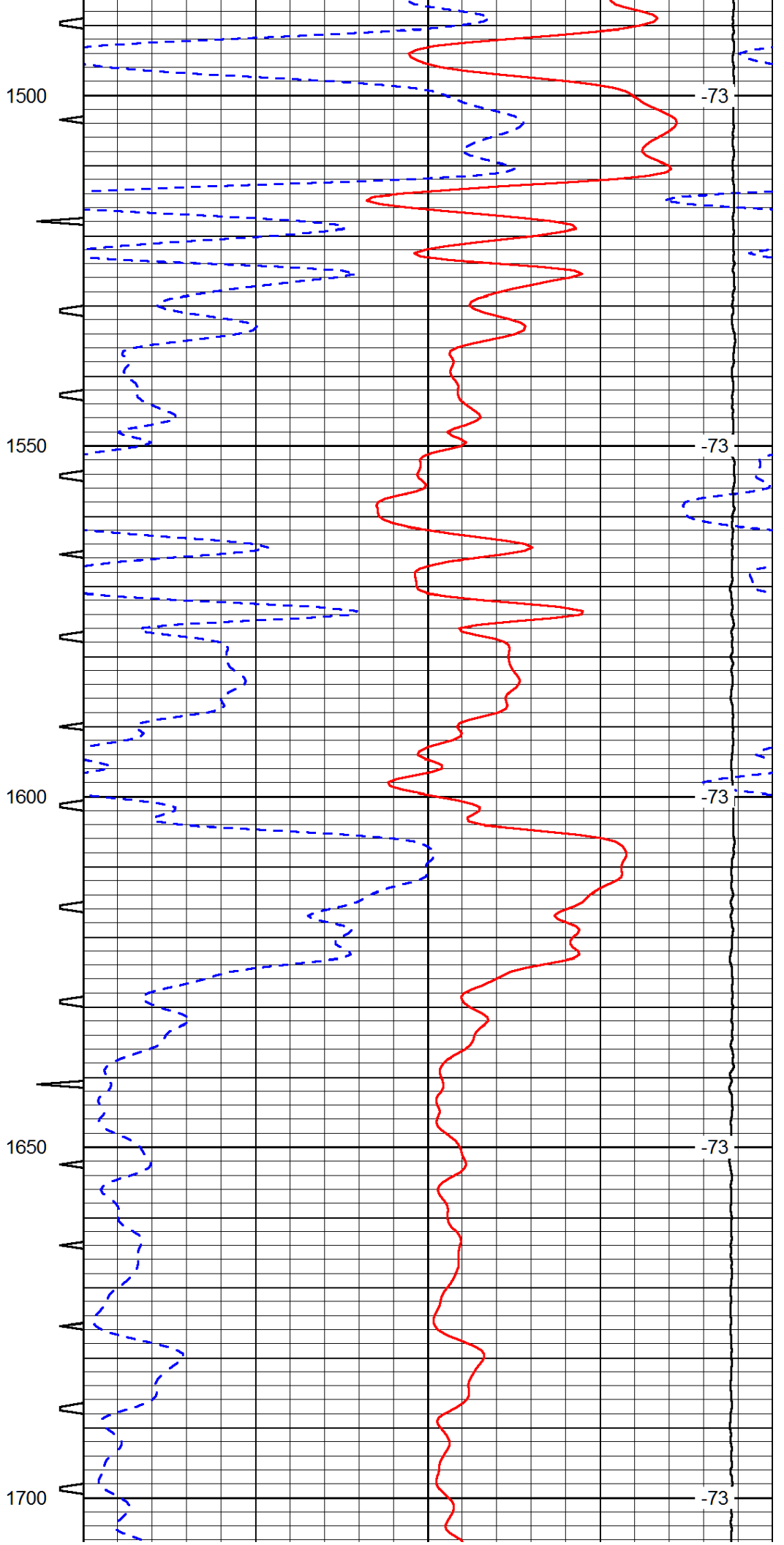
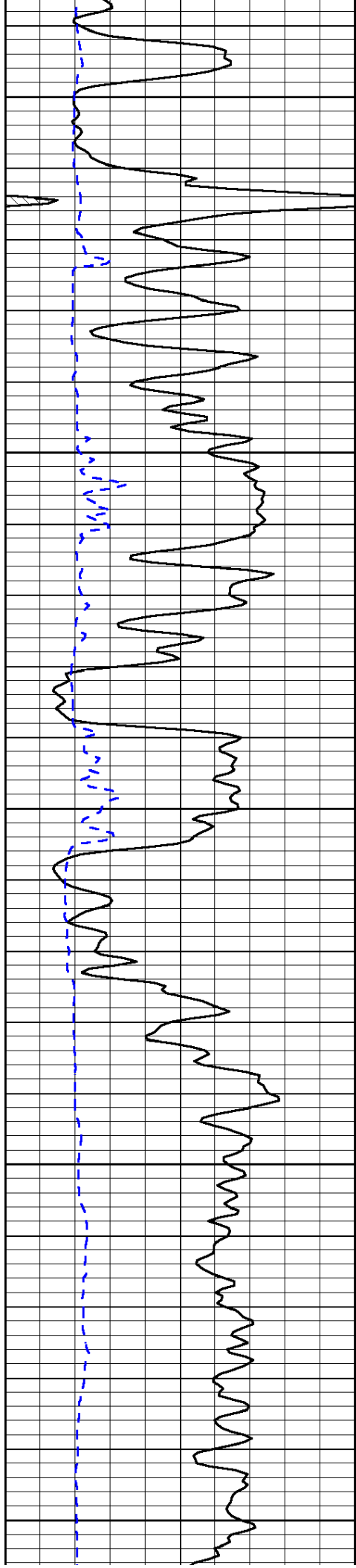


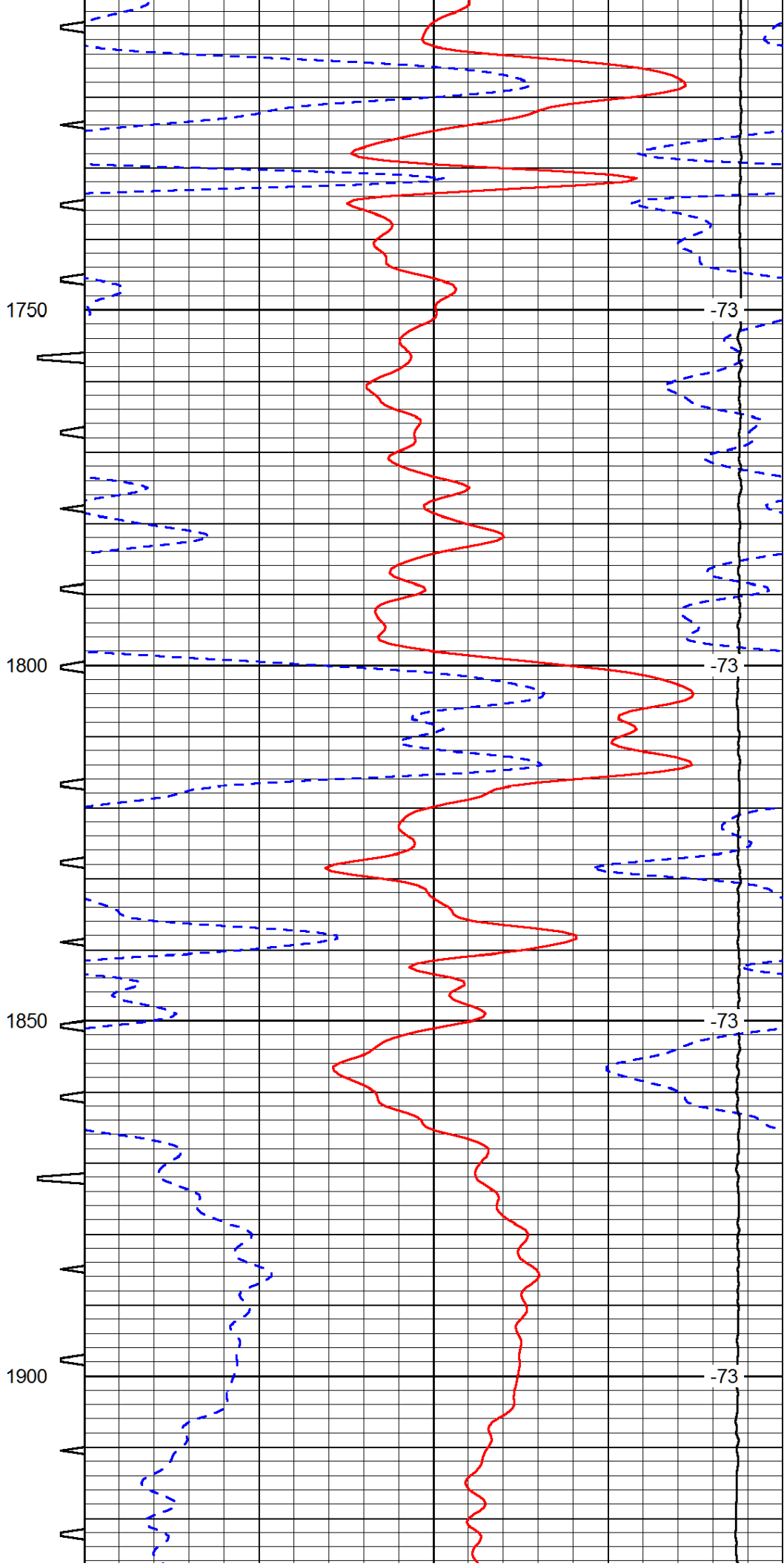
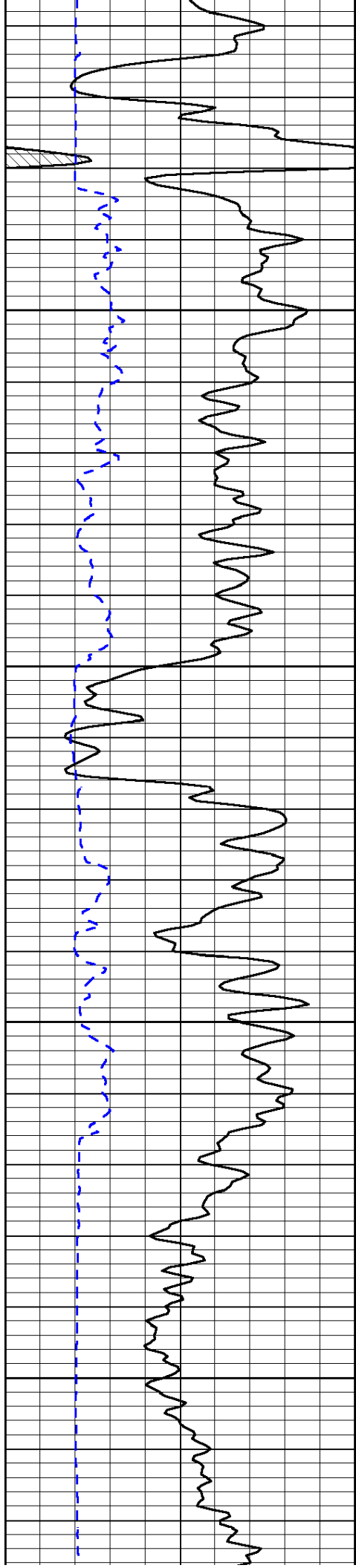


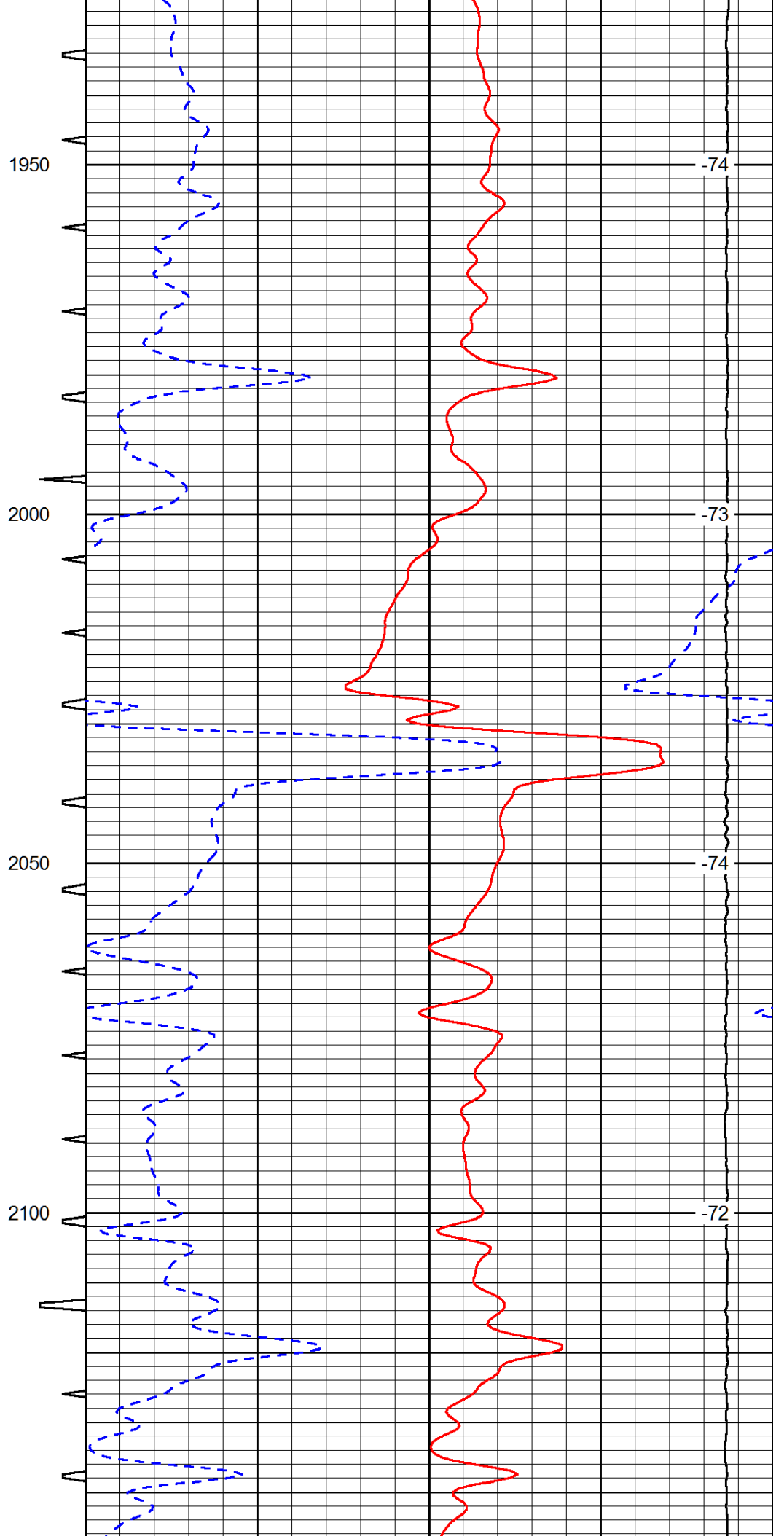
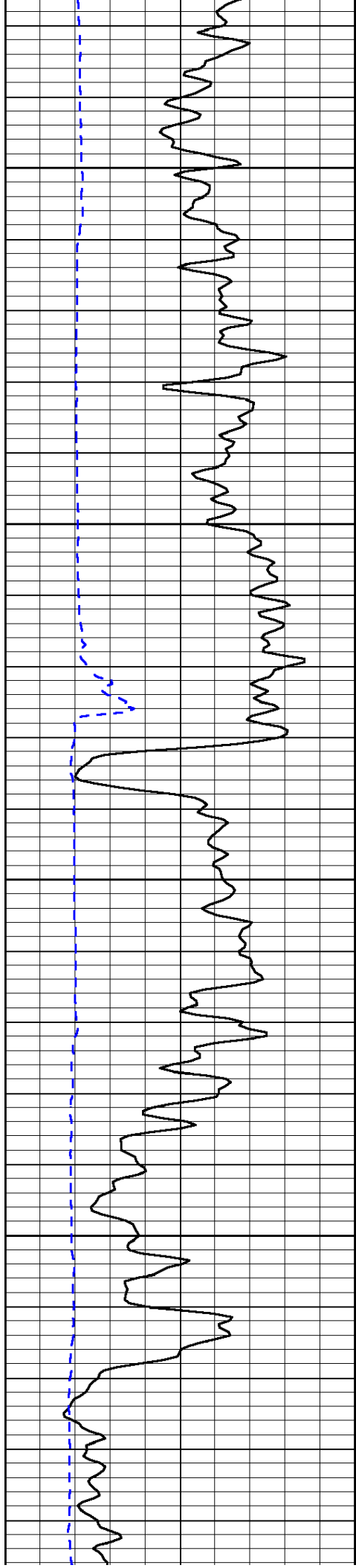


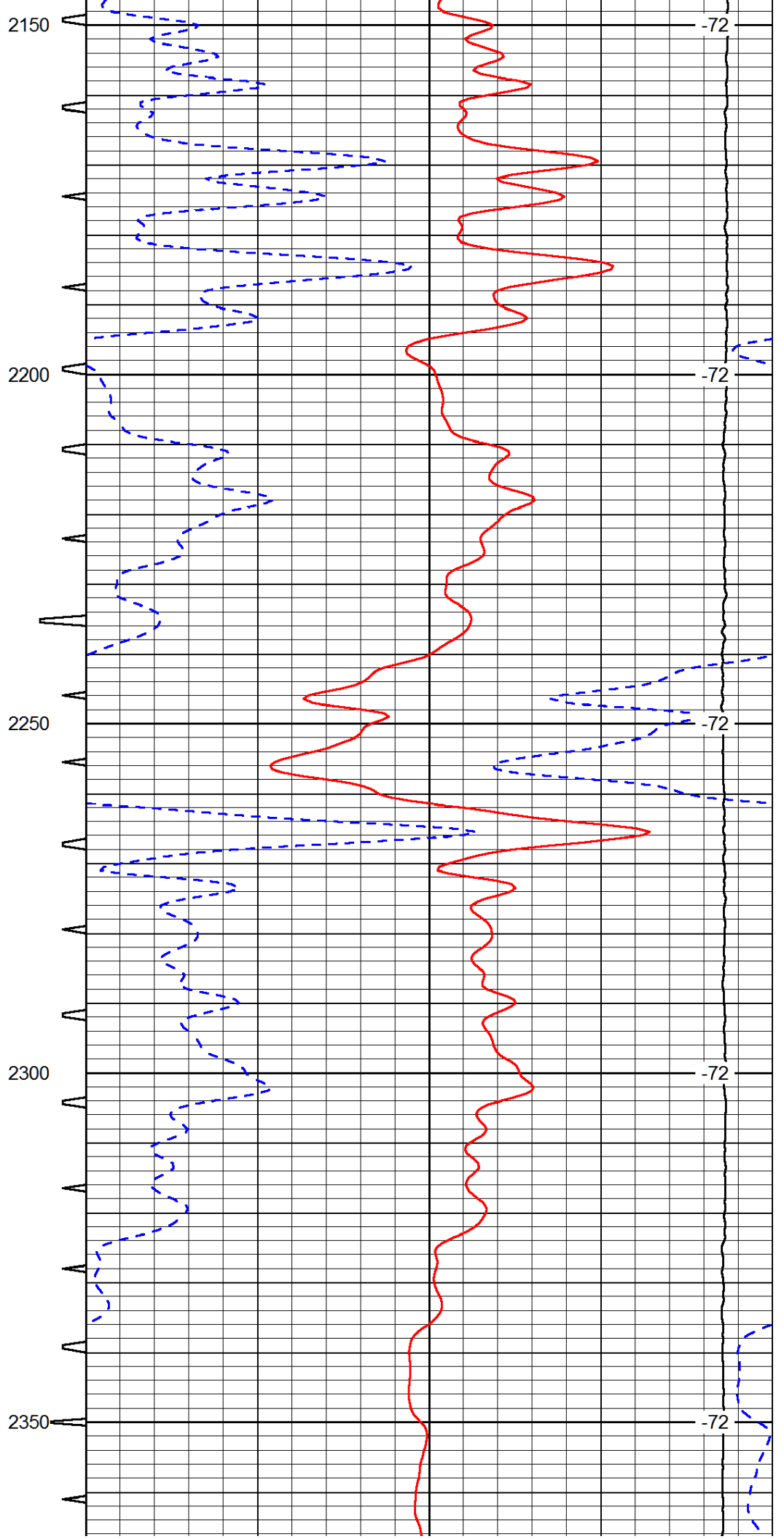
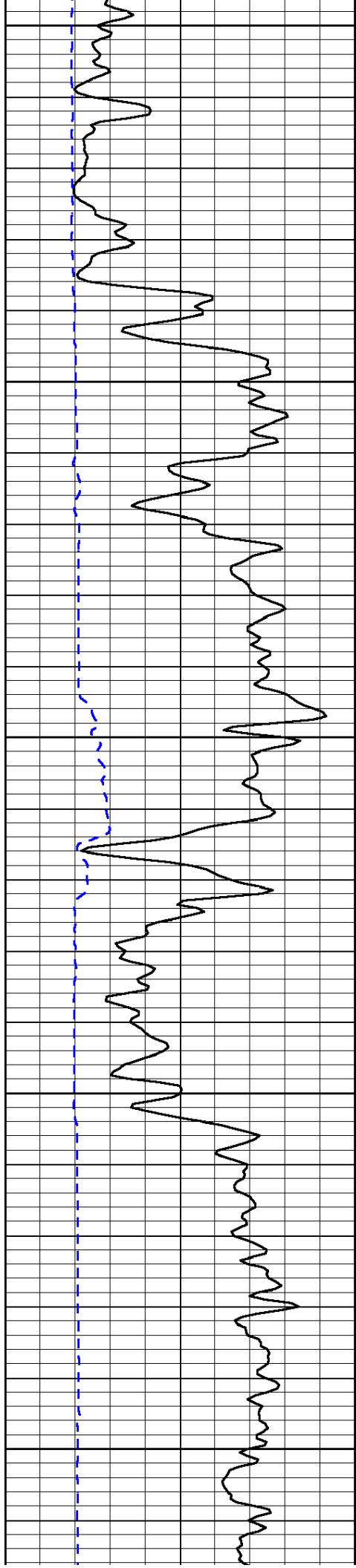


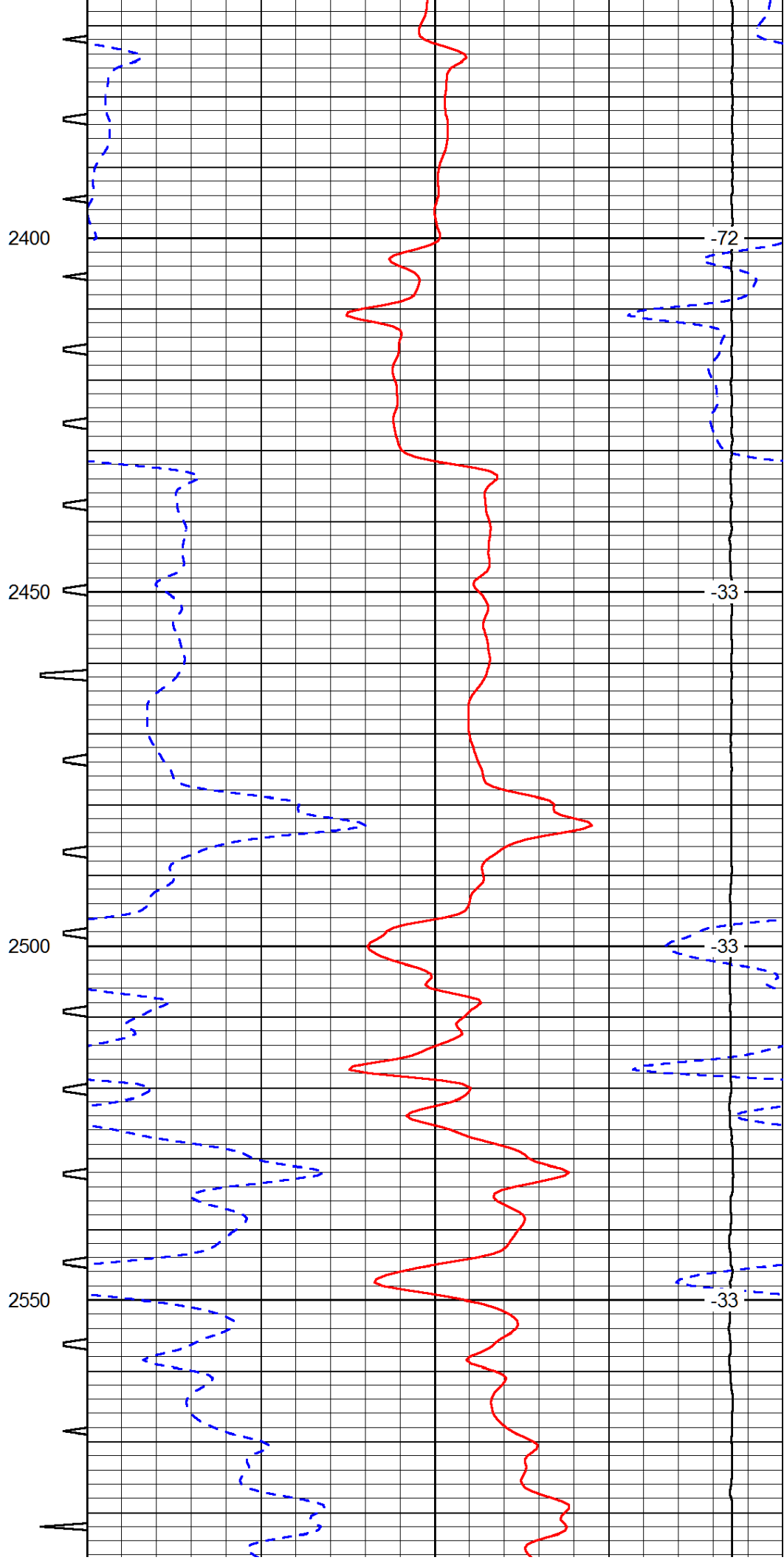
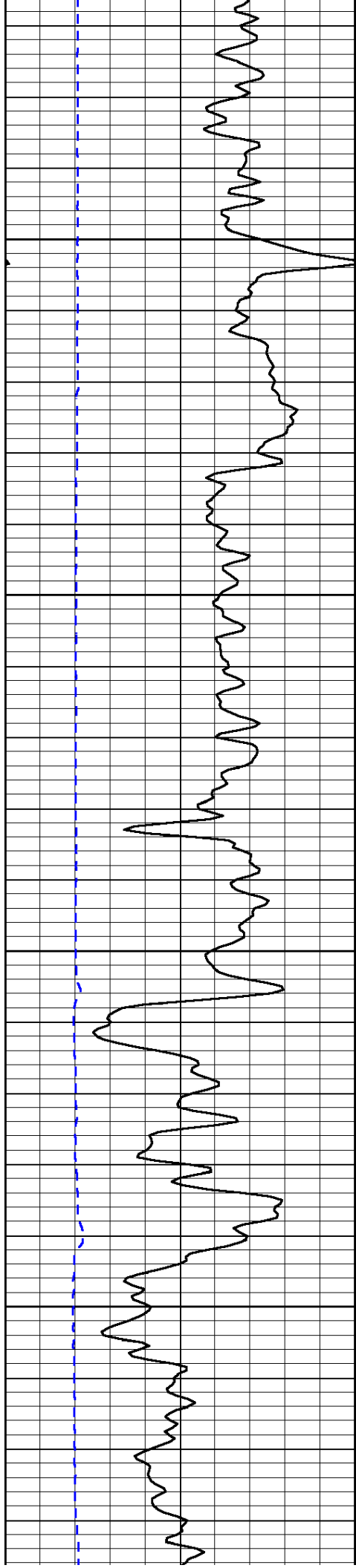


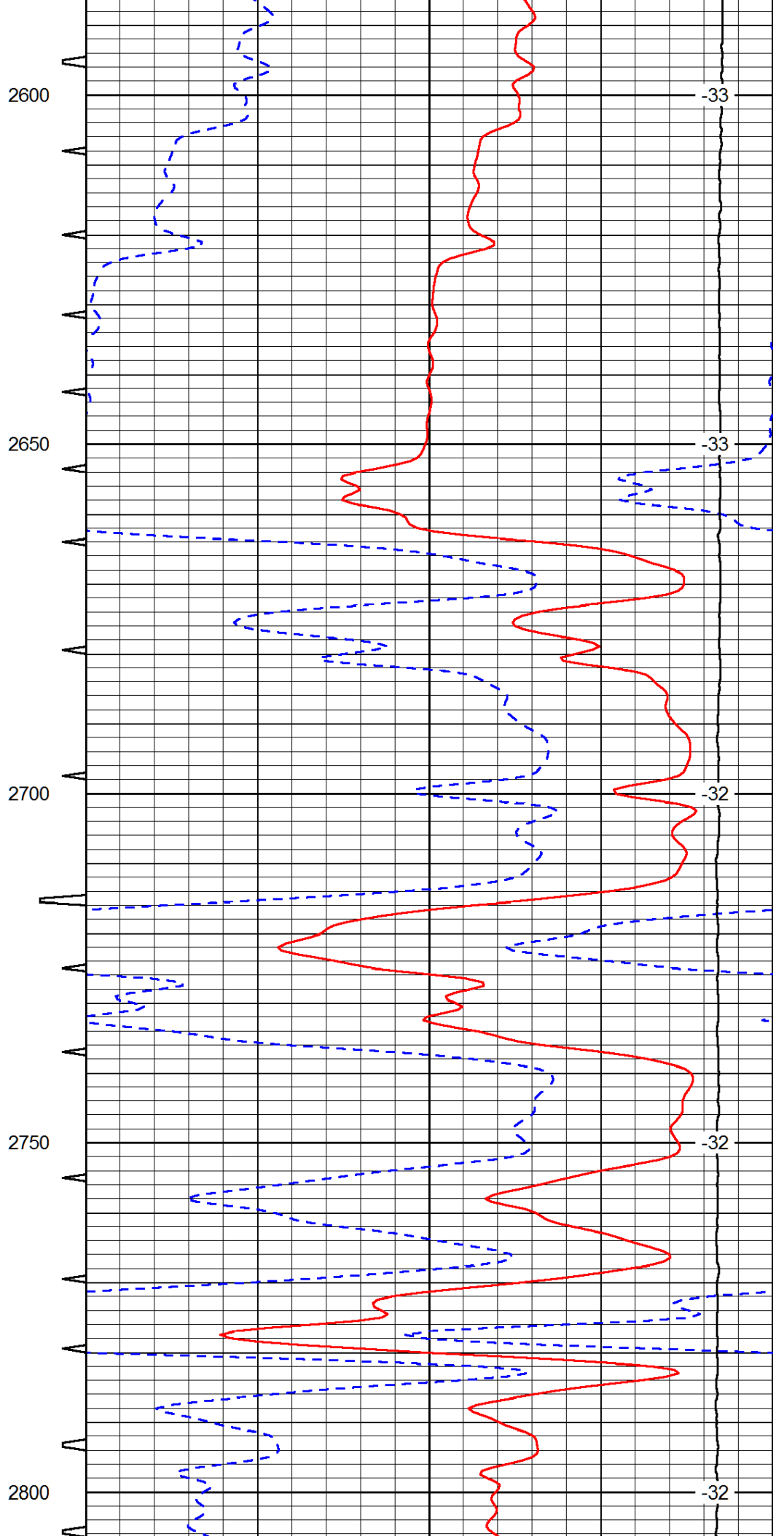
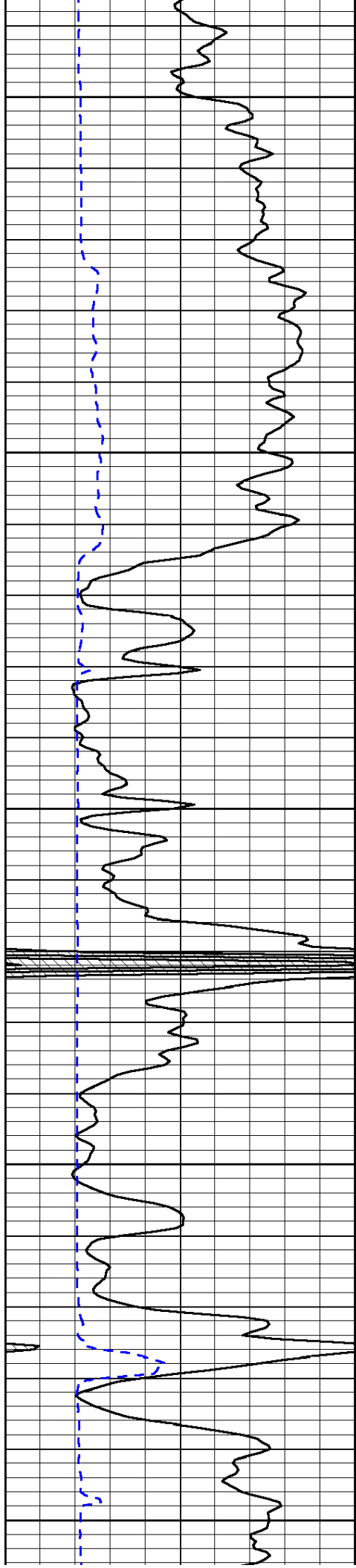


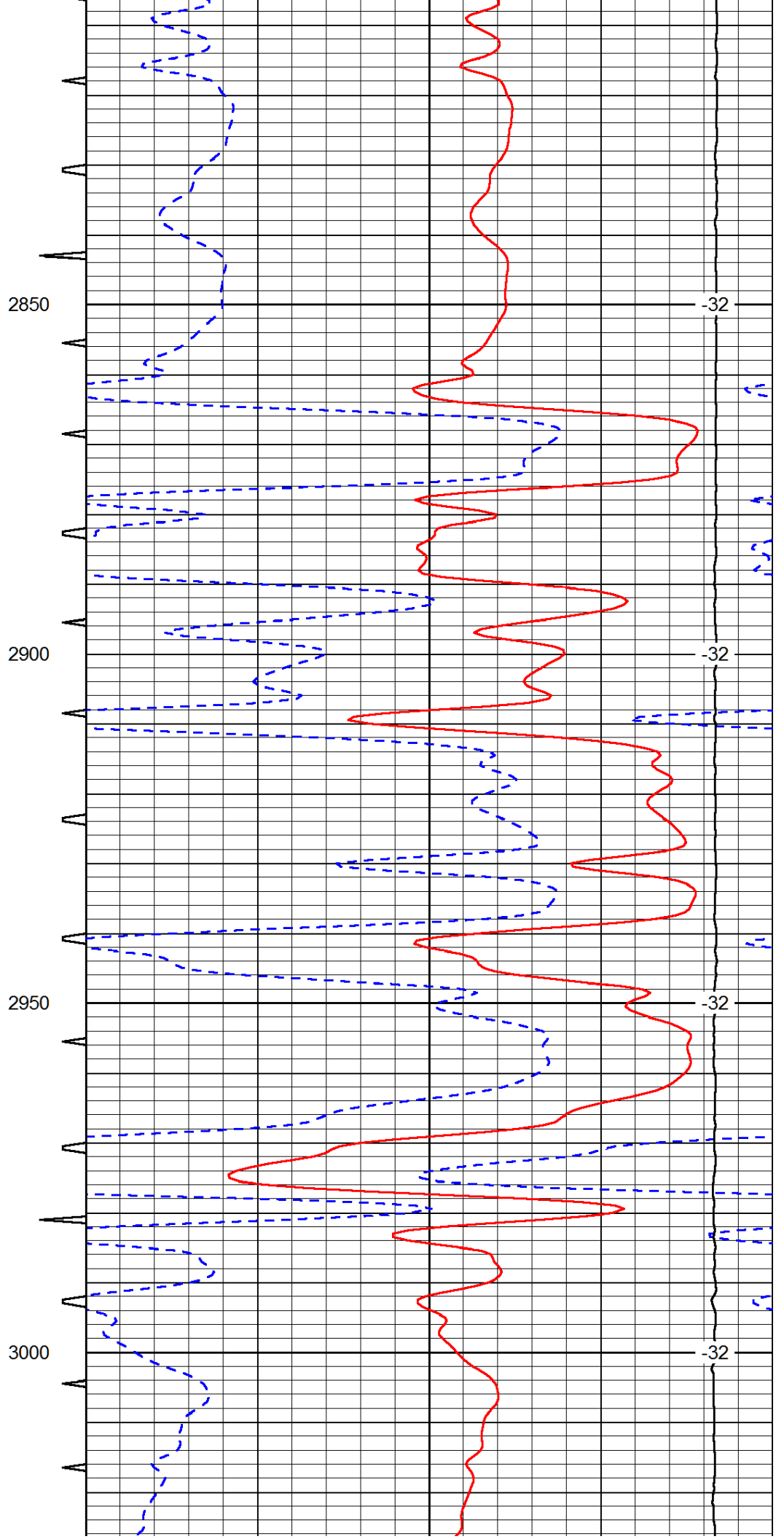
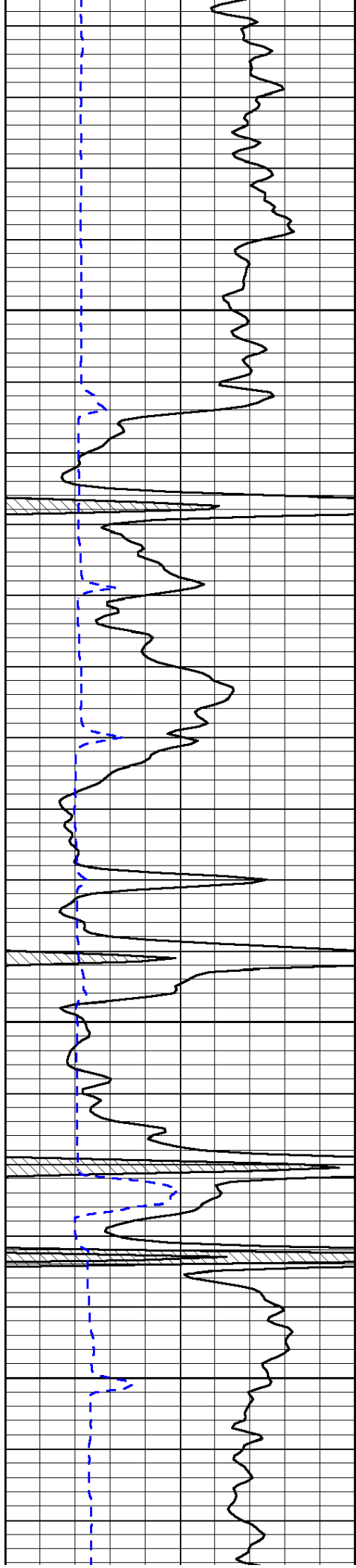


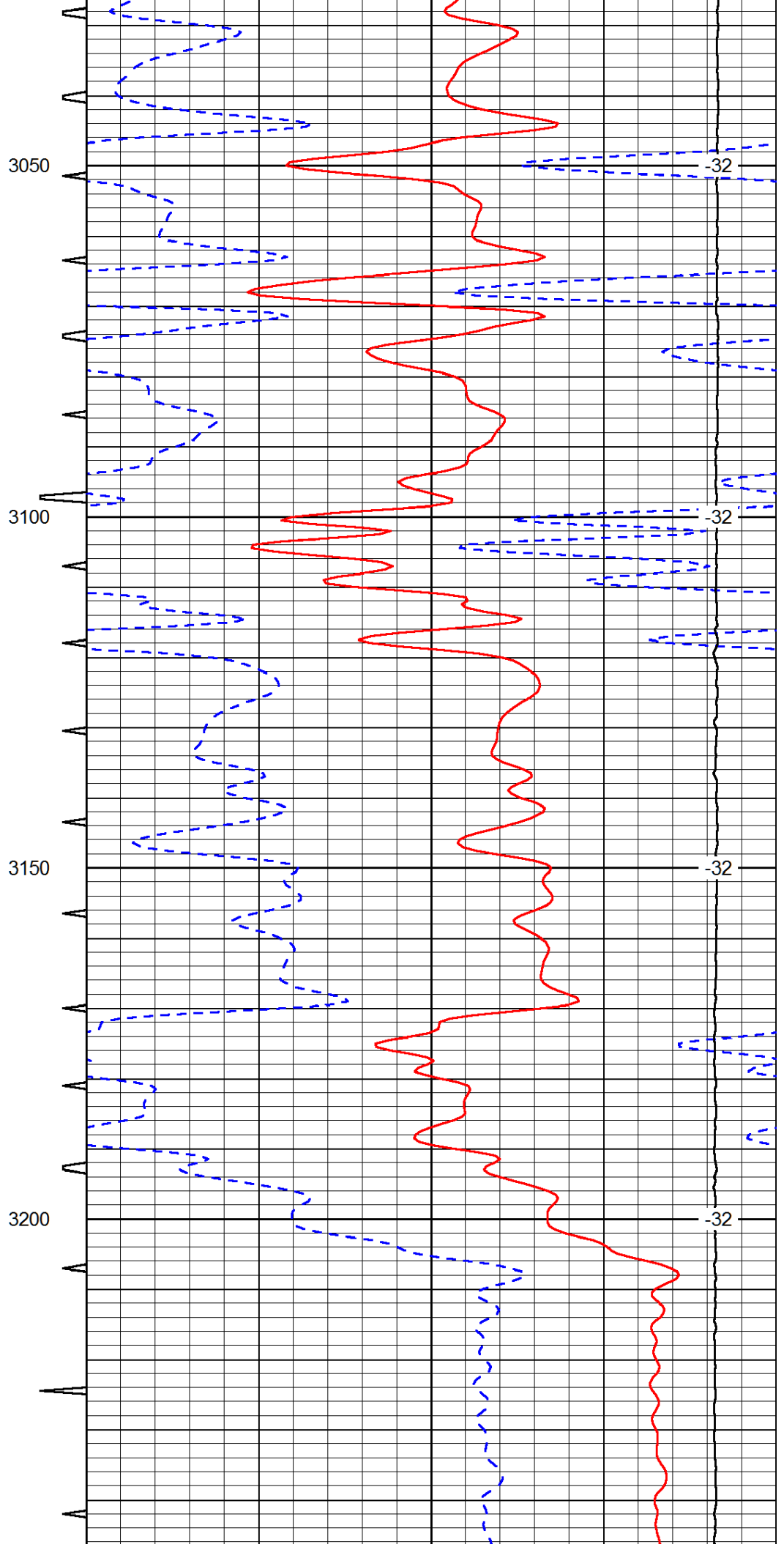
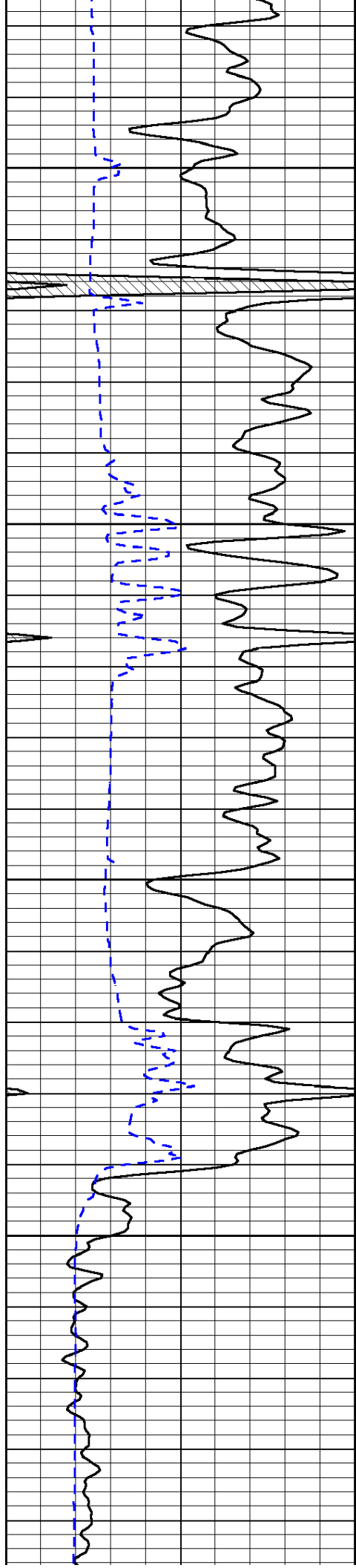


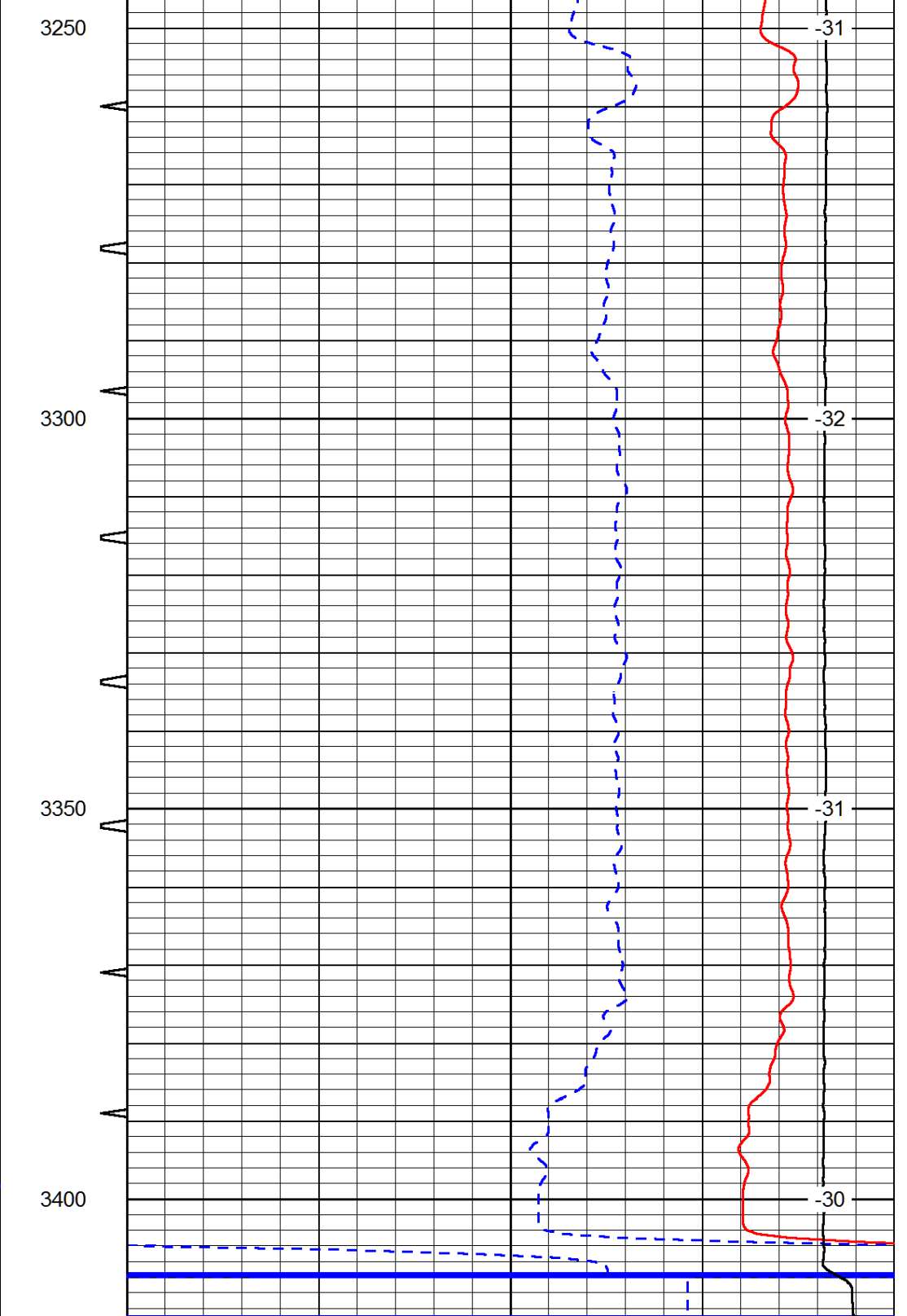
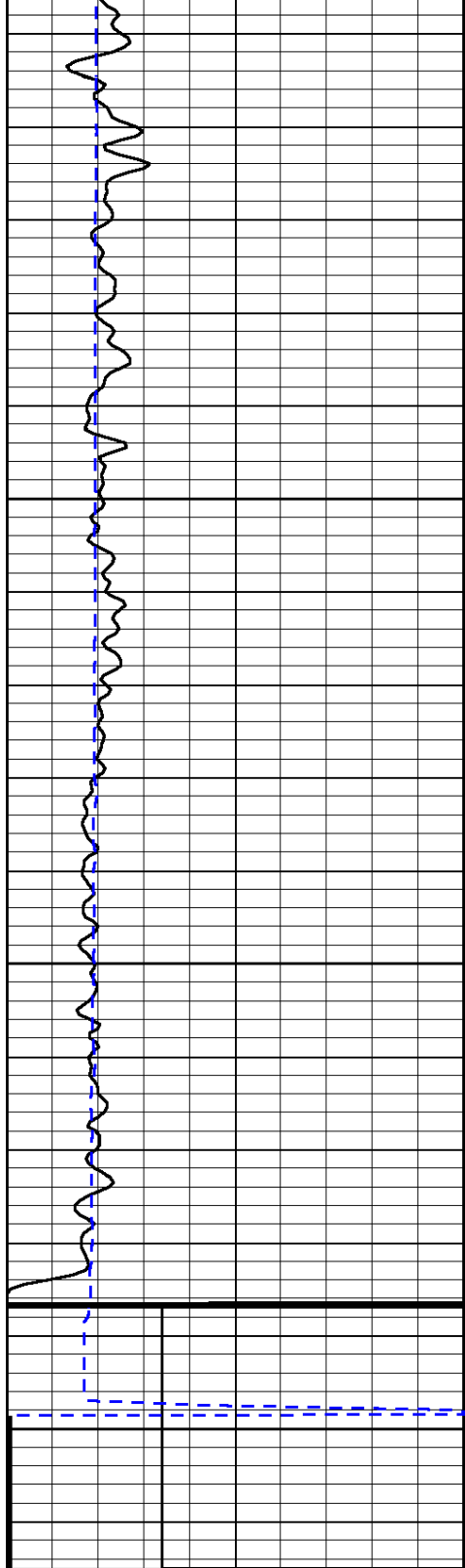












0	Gamma Ray (GAPI)	150	Sonic Int	140	Delta Time (usec/ft) (usec/ft)	40
150	Gamma Ray (GAPI)	300	5 (msec) 0	30	Sonic Porosity (pu)	-10
6	dCAL (in)	16		15000	LTEN (lb) (lb)	0

LSPD
(ft/min)