



Pioneer Energy Services

Dual Compensated Porosity Log

API No.	15-035-24520-00-00		
Company	Alton Oil, LLC		
Well	Steffen Unit #3		
Field	Posey Northeast		
County	Cowley		
Location	N2 N2 N2 NE 100' FNL / 1320' FEL		
State	Kansas		
Other Services	DIL/MEL BHCS/FRAC		

Permanent Datum	Ground Level	Elevation	1197
Log Measured From	Kelly Bushing	8	Ft. Above Perm. Datum
Drilling Measured From	Kelly Bushing		
Date	9/13/2013		

Run Number	One
Type Log	CNL / CDL
Depth Driller	3410
Depth Logger	3410
Bottom Logged Interval	3389
Top Logged Interval	2450
Type Fluid In Hole	Chemical
Salinity, PPM CL	1000
Density	9.1
Level	Full
Max. Rec. Temp. F	110
Operating Rig Time	5 Hours
Equipment -- Location	17 Days
Recorded By	R. Barnhart
Witnessed By	Tom Blair

Borehole Record				Casing Record			
Run No.	Bit	From	To	Size	Wgt.	From	To
One	12.25	00	212	8.625	23#	00	212
Two	7.875	212	TD				

<<< Fold Here >>>

All interpretations are opinions based on inferences from electrical or other measurements and we cannot and do not guarantee the accuracy or correctness of any interpretation, and we shall not, except in the case of gross or willful negligence on our part, be liable or responsible for any loss, costs, damages, or expenses incurred or sustained by anyone resulting from any interpretation made by any of our officers, agents or employees. These interpretations are also subject to our general terms and conditions set out in our current Price Schedule.

Comments

Thank you for using Log-Tech, Inc.
(785) 625-3858

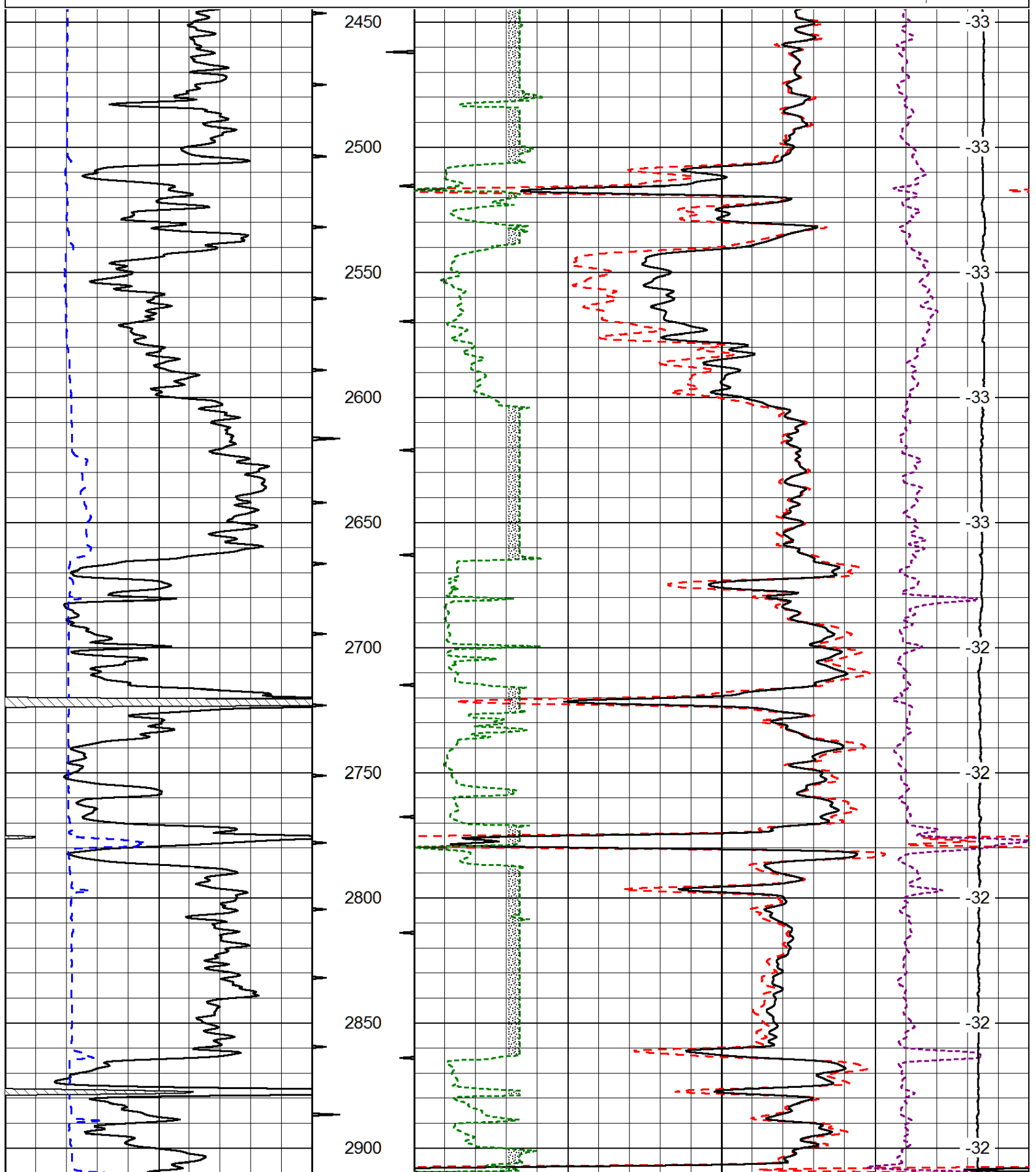
Winfield, KS:
S of town: E at Super 8, 2S to 202 Rd., 1/4E, S into

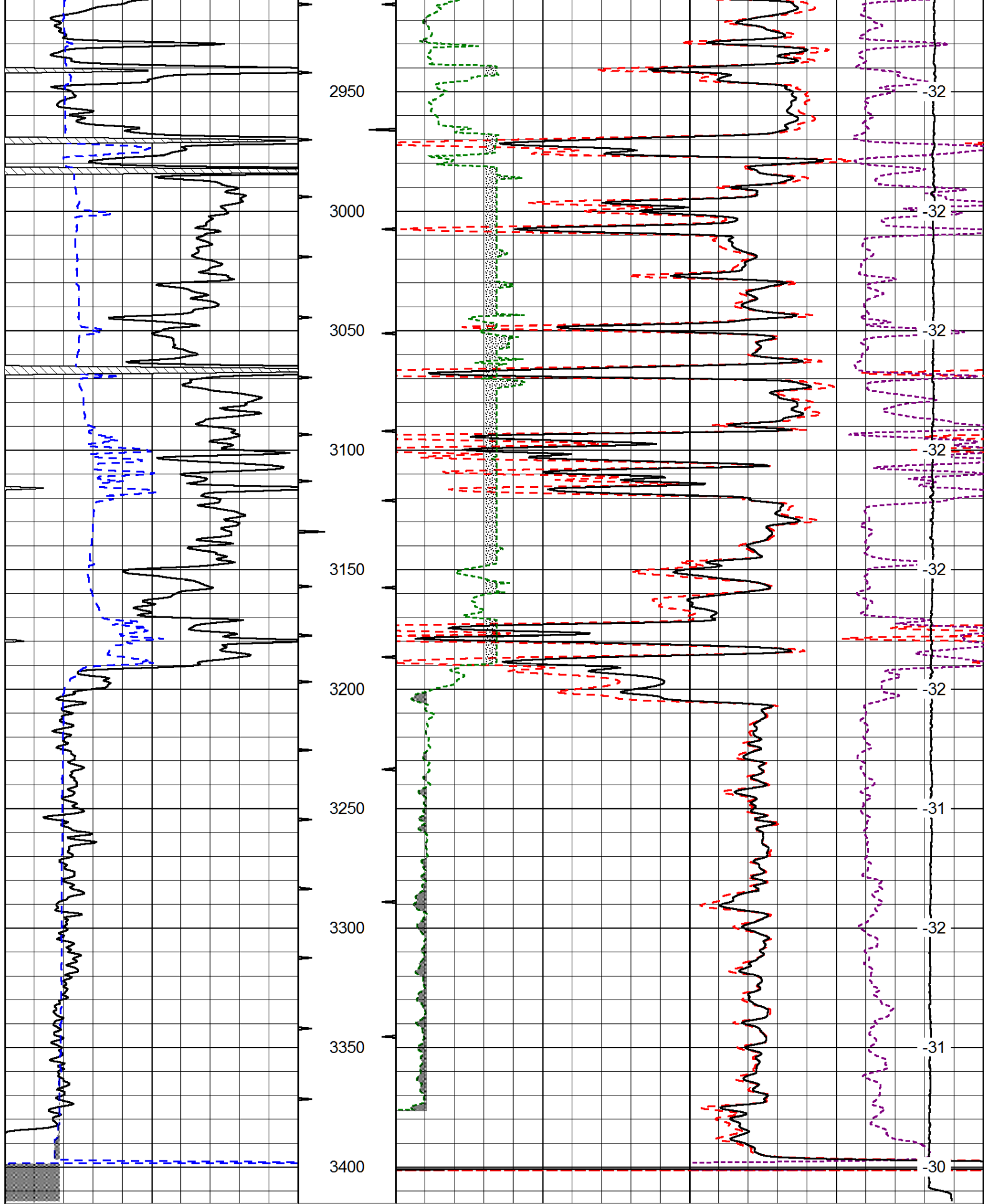
Database File: alton_hd.db
 Dataset Pathname: dil/altmain
 Presentation Format: cdl
 Dataset Creation: Fri Sep 13 19:07:49 2013
 Charted by: Depth in Feet scaled 1:600

0	Gamma Ray (GAPI)	150
6	Caliper (in)	16

30	Compensated Density (pu)		-10
2	Bulk Density (g/cc)		3
15000	Line Tension (lb)		0
2.625	DGA (g/cc)	3.425	-0.25
			Correction (g/cc)
			0.25

LSPD
(ft/min)





0	Gamma Ray (GAPI)	150
6	Caliper (in)	16

30	Compensated Density (pu)	-10
2	Bulk Density (g/cc)	3

15000	Line Tension (lb)	0			
2.625	DGA (g/cc)	3.425	-0.25	Correction (g/cc)	0.25

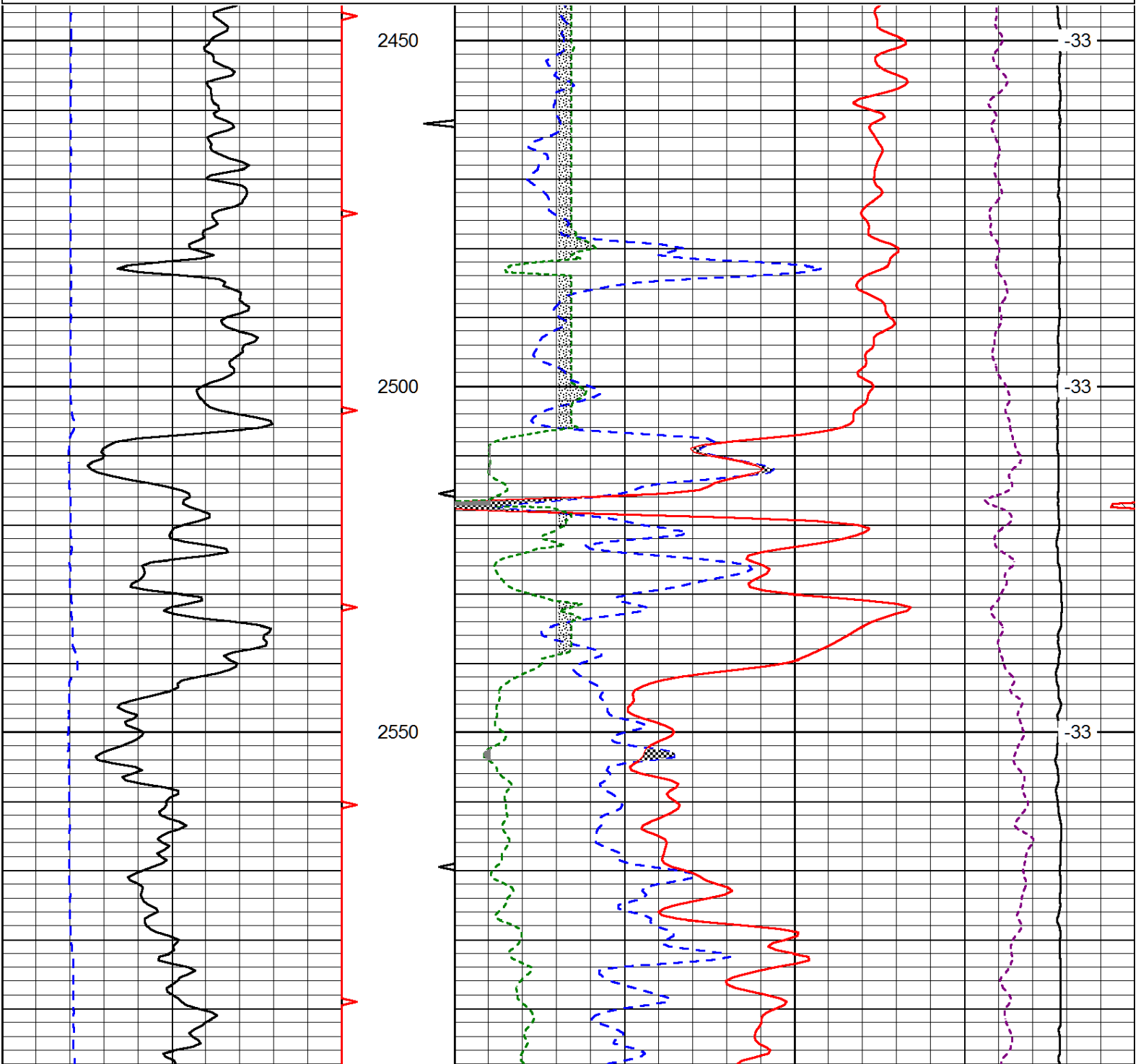
LSPD
(ft/min)

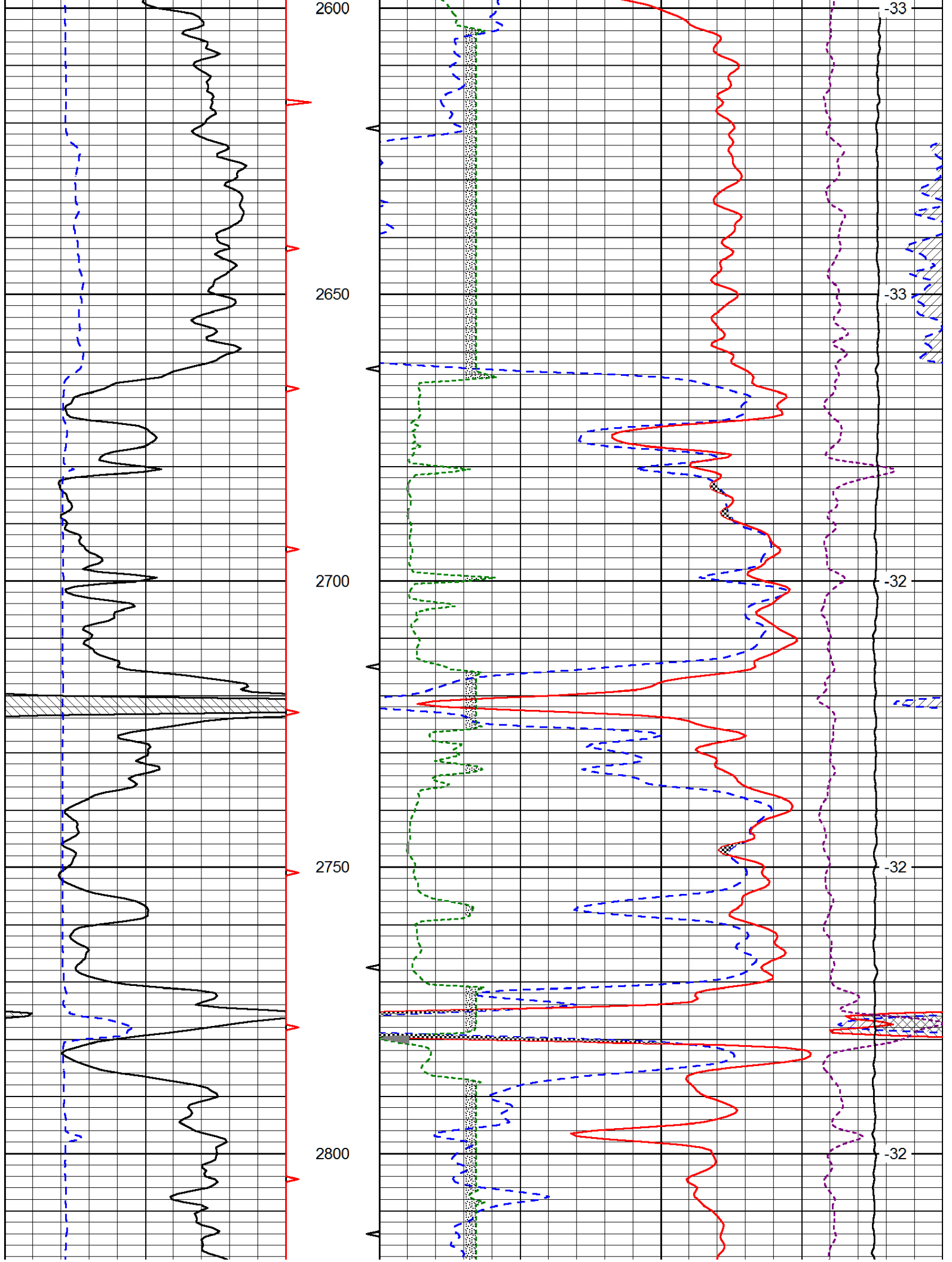
Database File: alton_hd.db
Dataset Pathname: dil/altmain
Presentation Format: cndlspec
Dataset Creation: Fri Sep 13 19:07:49 2013
Charted by: Depth in Feet scaled 1:240

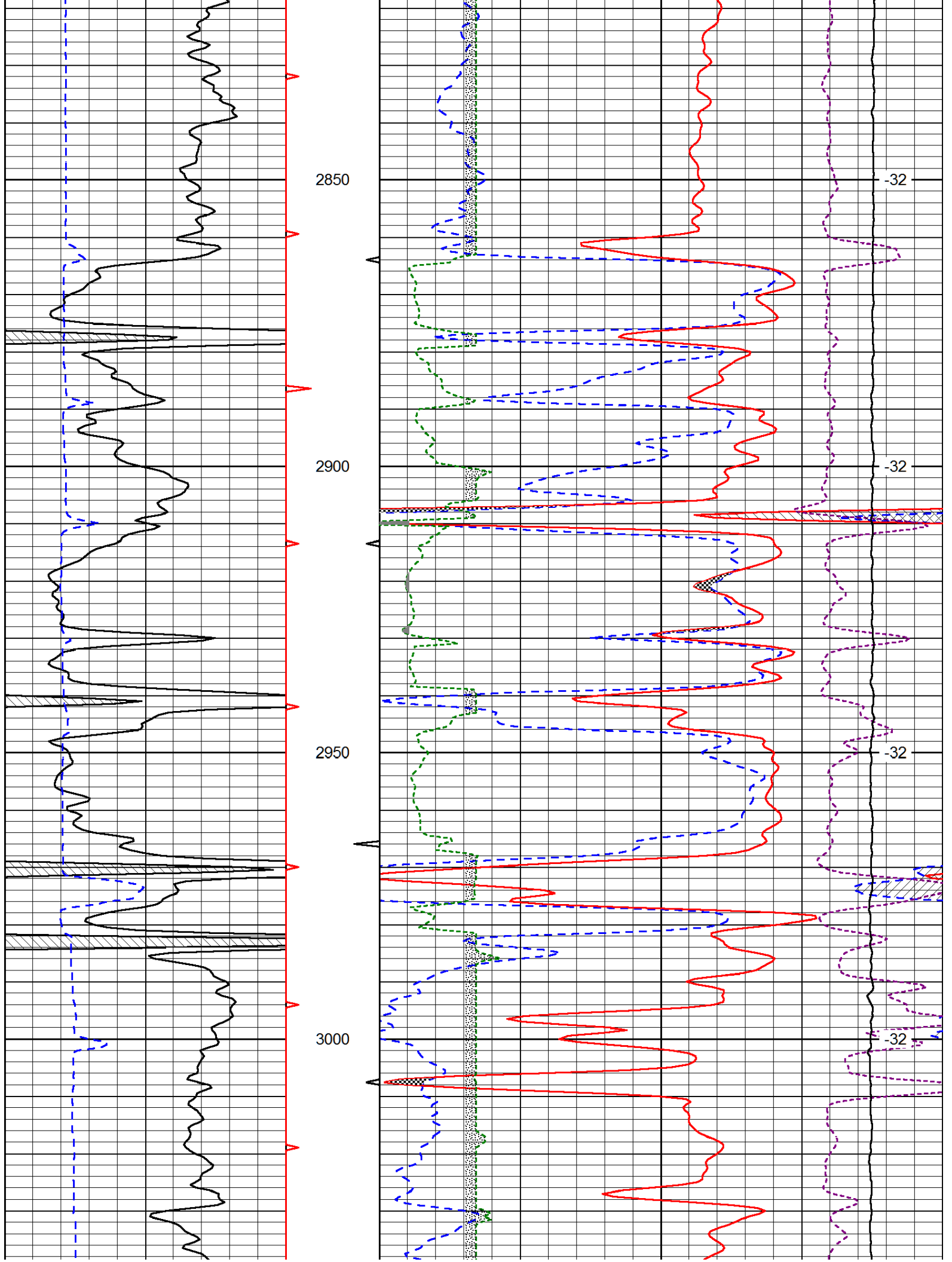
0	Gamma Ray (GAPI)	150
6	Caliper (in)	16

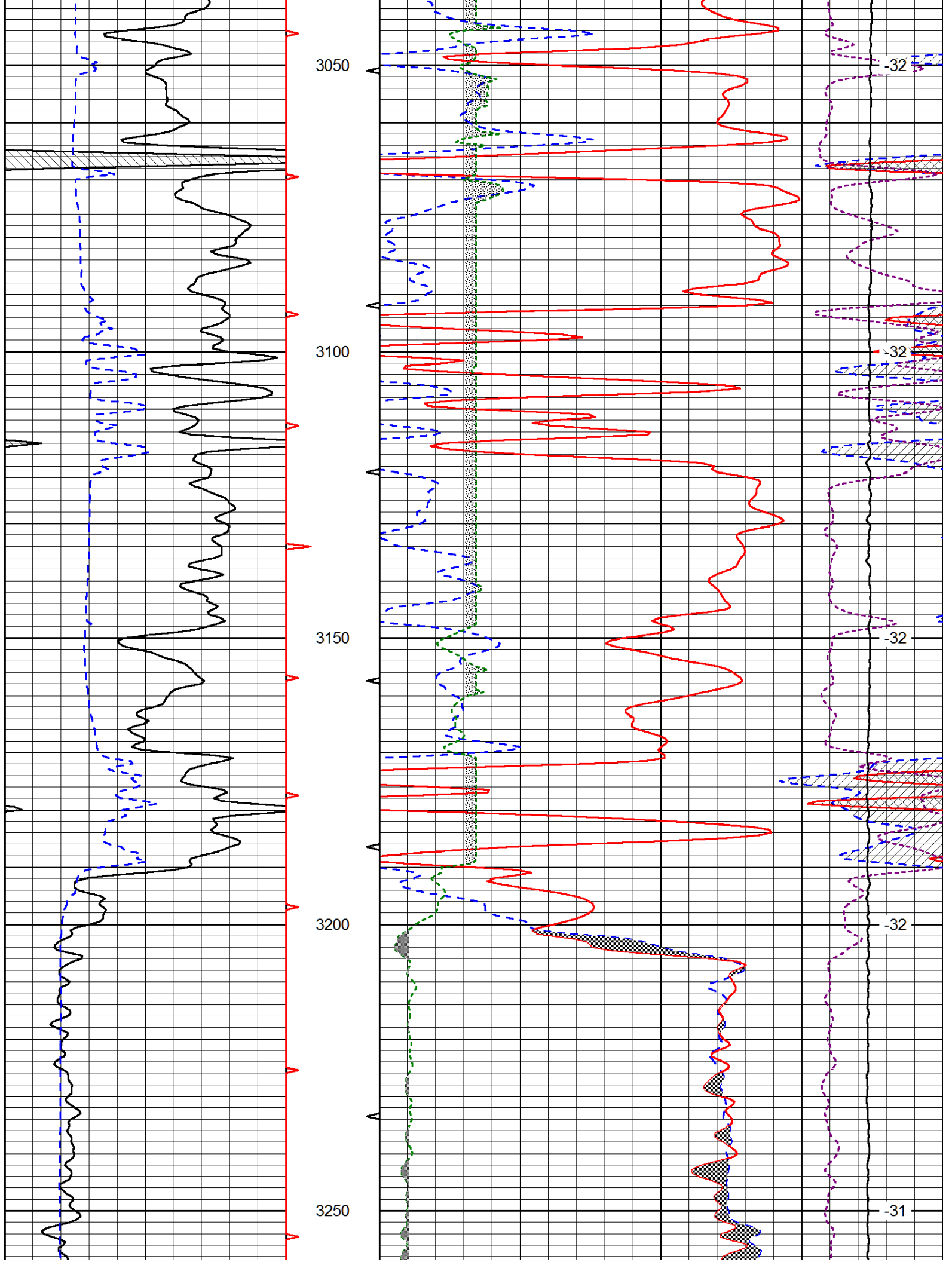
30	CNLS (pu)			-10	
30	Compensated Density (2.71 ma) (pu)			-10	
2.625	DGA (g/cc)	3.425	-0.25	Correction (g/cc)	0.25
10000	Line Tension (lb)			0	

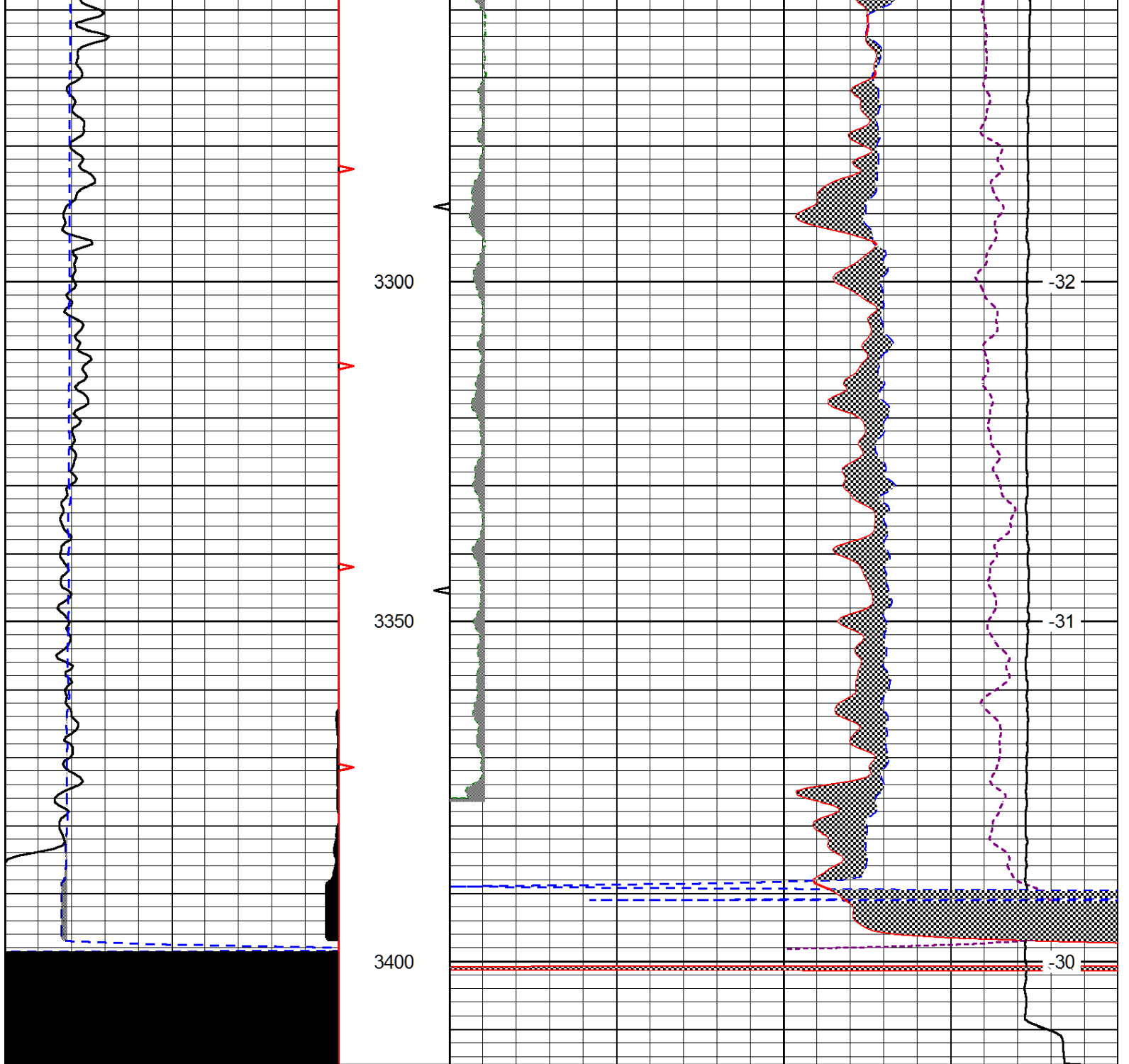
LSPD
(ft/min)











0	Gamma Ray (GAPI)	150
6	Caliper (in)	16

30	CNLS (pu)			-10	
30	Compensated Density (2.71 ma) (pu)			-10	
2.625	DGA (g/cc)	3.425	-0.25	Correction (g/cc)	0.25
10000	Line Tension (lb)			0	

LSPD
(ft/min)