



**SUPERIOR**  
Hays,  
Kansas

**COMPENSATED  
DENSITY/NEUTRON  
LOG**

Company DOWNING NELSON OIL CO., INC.  
Well SEITZ-BARNHARDT "C" #1-34  
Field RIDGEWAY  
County TREGO  
State KANSAS

Company DOWNING NELSON OIL COMPANY, INC.  
Well SEITZ-BARNHARDT "C" #1-34  
Field RIDGEWAY  
County TREGO State KANSAS

Location: API # : 15-195-22733-0000  
330' FNL & 1700' FEL

Other Services  
DIL/MEL  
SONIC

SEC 34 TWP 12S RGE 21W

Permanent Datum GROUND LEVEL Elevation 2191  
Log Measured From KELLY BUSHING 8' A.G.L.  
Drilling Measured From KELLY BUSHING

Elevation  
K.B. 2199  
D.F. 2197  
G.L. 2191

Date	11/3/11
Run Number	ONE
Depth Driller	3940
Depth Logger	3944
Bottom Logged Interval	3920
Top Log Interval	3150
Casing Driller	8 5/8" @ 221
Casing Logger	221
Bit Size	7 7/8
Type Fluid in Hole	CHEMICAL MUD
Density / Viscosity	9.0/56
pH / Fluid Loss	9.5/8.0
Source of Sample	FLOWLINE
Rim @ Meas. Temp	.80 @ 58F
Rmf @ Meas. Temp	.60 @ 58F
Rmc @ Meas. Temp	.96 @ 58F
Source of Rmf / Rmc	MEASURED
Rim @ BHT	.38 @ 116F
Time Circulation Stopped	2 HOURS
Time Logger on Bottom	
Maximum Recorded Temperature	116F
Equipment Number	680
Location	HAYS, KS.
Recorded By	JASON CAPPELLUCCI
Witnessed By	MARC DOWNING

<<< Fold Here >>>

All interpretations are opinions based on inferences from electrical or other measurements and we cannot and do not guarantee the accuracy or correctness of any interpretation, and we shall not, except in the case of gross or willful negligence on our part, be liable or responsible for any loss, costs, damages, or expenses incurred or sustained by anyone resulting from any interpretation made by any of our officers, agents or employees. These interpretations are also subject to our general terms and conditions set out in our current Price Schedule.

Comments

THANK YOU FOR USING SUPERIOR WELL SERVICE (785) 628-6395  
DIRECTIONS  
I-70 & RIGA EXIT - 3/4 MILES N. TO RD. L - 3/4 E. - S. INTO

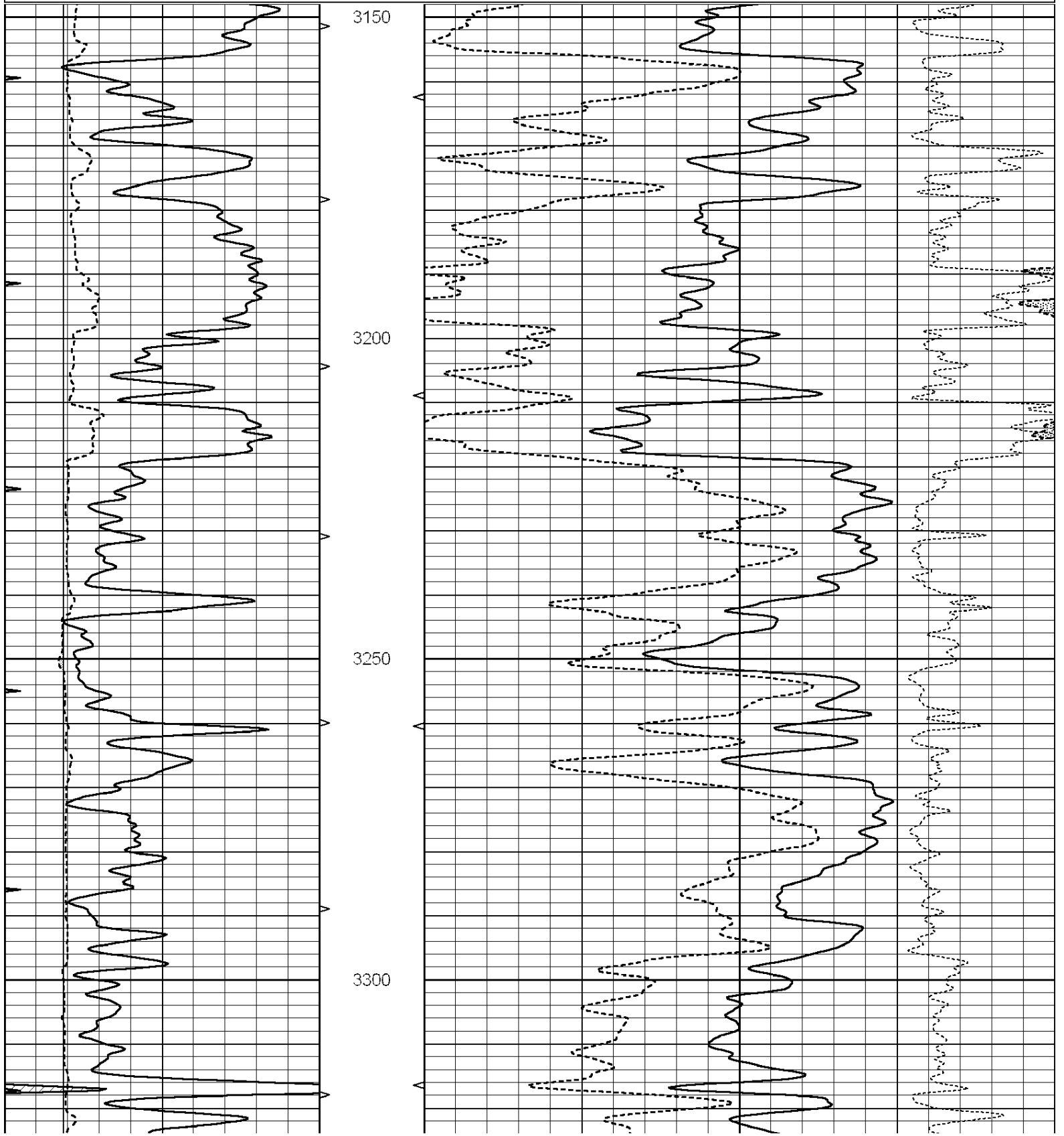


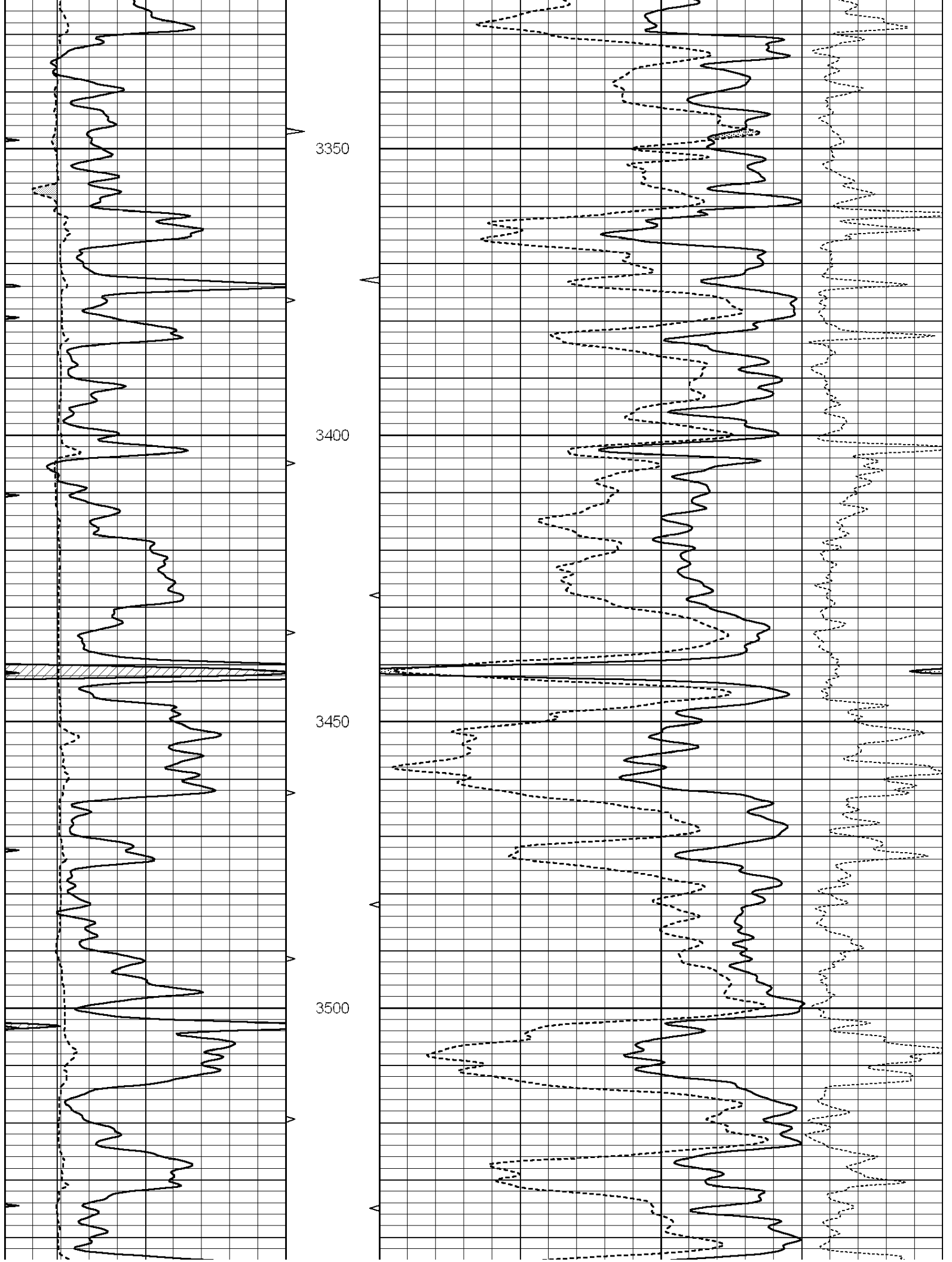
**SUPERIOR**  
Hays,  
Kansas

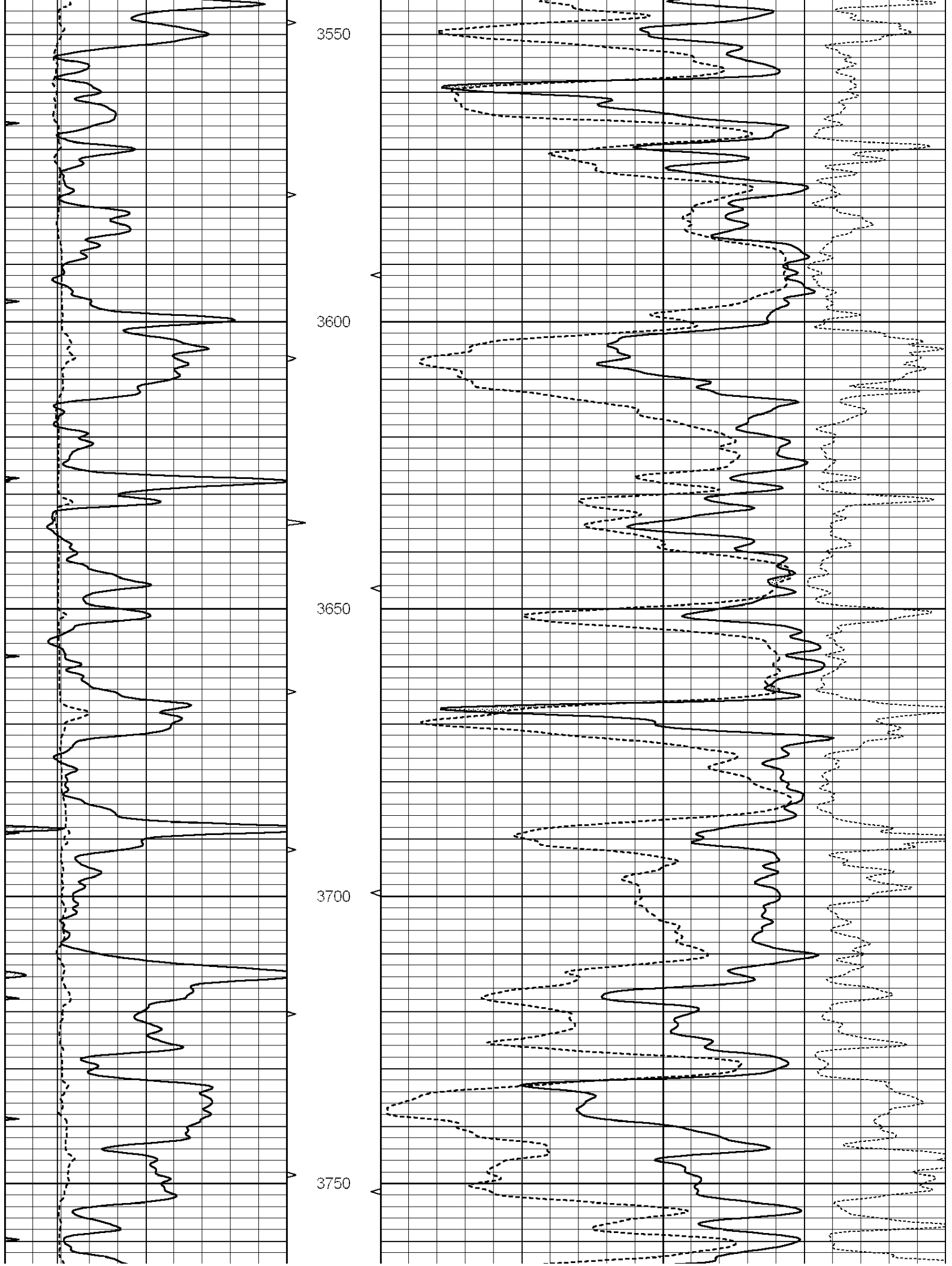
**MAIN SECTION**

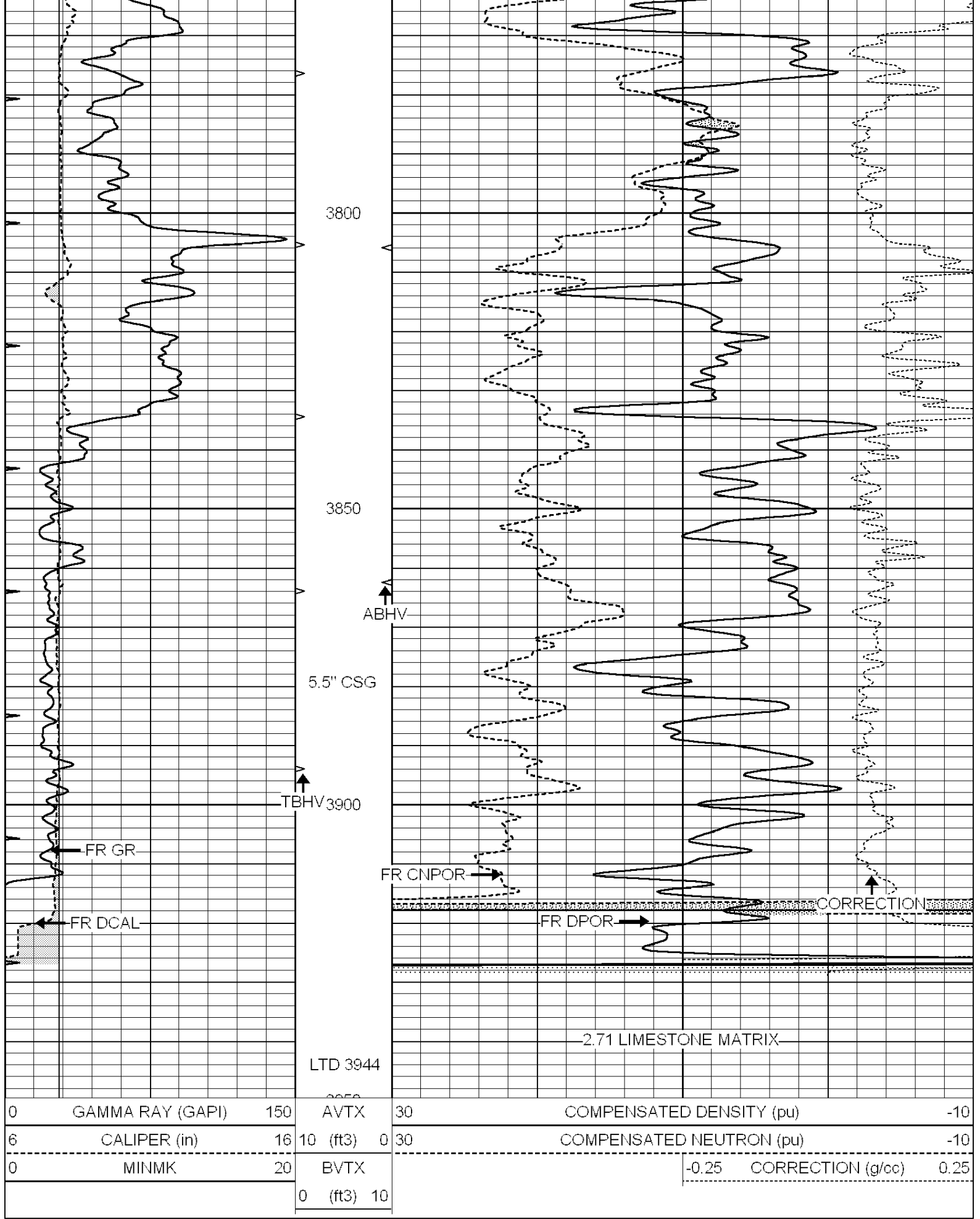
Database File: 007899ddn.db  
 Dataset Pathname: pass3.1  
 Presentation Format: \_den\_neu  
 Dataset Creation: Thu Nov 03 10:18:35 2011 by Calc Open-Cased 090629  
 Charted by: Depth in Feet scaled 1:240

0	GAMMA RAY (GAPI)	150	AVTX	30	COMPENSATED DENSITY (pu)	-10
6	CALIPER (in)	16	10 (ft3)	0 30	COMPENSATED NEUTRON (pu)	-10
0	MINMK	20	BVTX		-0.25 CORRECTION (g/cc)	0.25
			0 (ft3)	10		









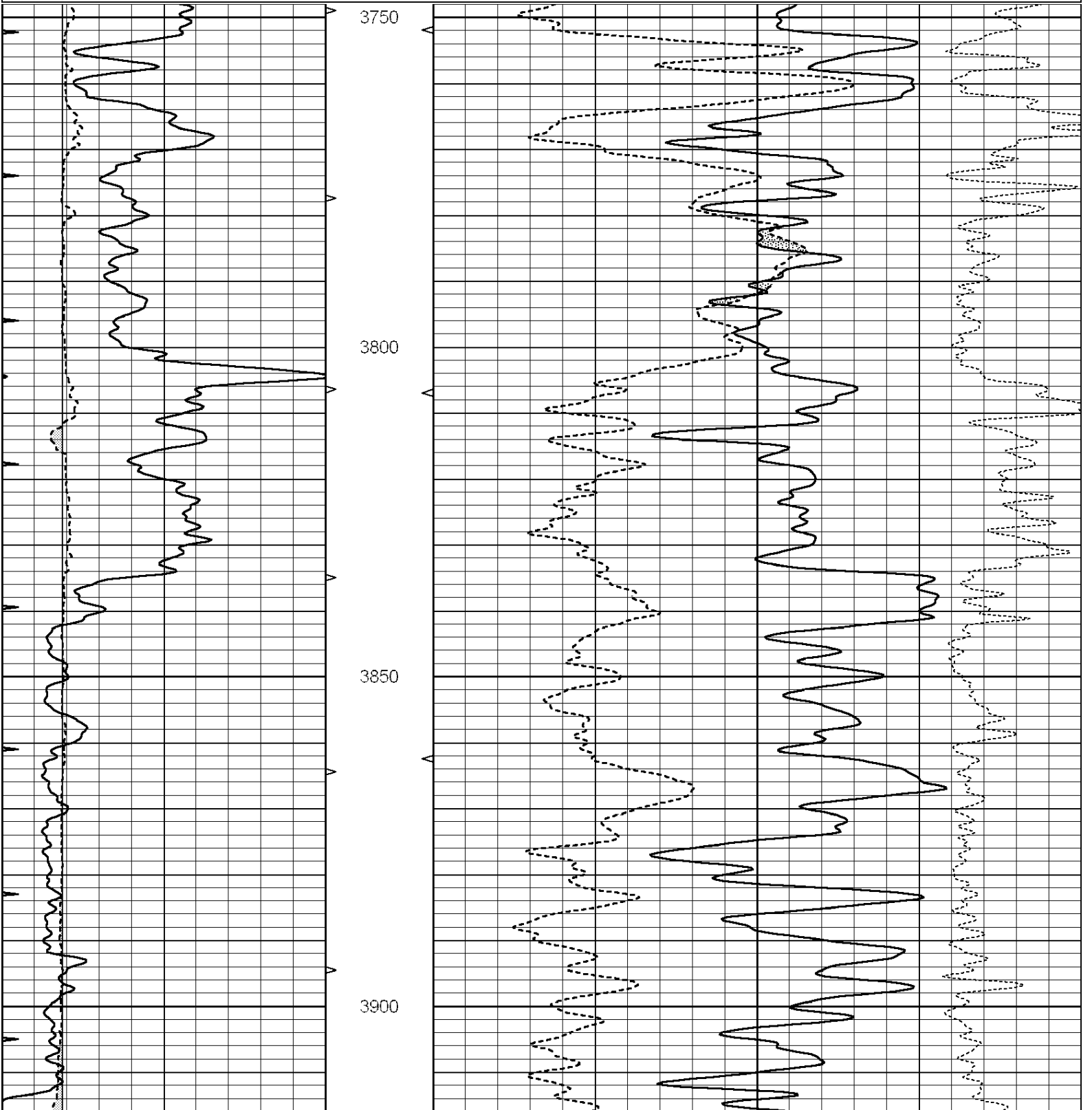
0	GAMMA RAY (GAPI)	150	AVTX	30	COMPENSATED DENSITY (pu)	-10		
6	CALIPER (in)	16	10 (ft3)	0	30	COMPENSATED NEUTRON (pu)	-10	
0	MINMK	20	BVTX			-0.25	CORRECTION (g/cc)	0.25
			0 (ft3)	10				



# REPEAT SECTION

Database File: 007899ddn.db  
 Dataset Pathname: pass2.1  
 Presentation Format: \_den\_neu  
 Dataset Creation: Thu Nov 03 10:20:49 2011 by Calc Open-Cased 090629  
 Charted by: Depth in Feet scaled 1:240

0	GAMMA RAY (GAPI)	150	AVTX	30	COMPENSATED DENSITY (pu)	-10
6	CALIPER (in)	16	10 (ft3)	0 30	COMPENSATED NEUTRON (pu)	-10
0	MINMK	20	BVTX		-0.25 CORRECTION (g/cc)	0.25
			0 (ft3)	10		





Master Calibration

	Density		Far Detector	Near Detector	
Magnesium	1.710	g/cc	1015.91	497.51	cps
Aluminum	2.600	g/cc	227.67	350.20	cps
Spine Angle = 76.79			Density/Spine Ratio = 0.579		
	Size		Reading		
Small Ring	8.00	in	2.24	V	
Large Ring	14.00	in	4.38	V	

Compensated Neutron Calibration Report

Serial Number: 6I  
Tool Model: G

CALIBRATION

Detector	Readings		Target		Normalization
Short Space	1.00	cps	1.00	cps	1.0000
Long Space	1.00	cps	1.00	cps	1.0000

Gamma Ray Calibration Report

Serial Number: #8  
Tool Model: OPEN  
Performed: Mon Jun 13 16:56:43 2011

Calibrator Value: 150.0 GAPI

Background Reading: 0.0 cps  
Calibrator Reading: 175.0 cps

Sensitivity: 0.8371 GAPI/cps