



SUPERIOR
Hays,
Kansas

**DUAL
INDUCTION
LOG**

Company DOWNING NELSON OIL CO., INC.
Well SEITZ-BARNHARDT "C" #1-34
Field RIDGEWAY
County TREGO
State KANSAS

Company DOWNING NELSON OIL COMPANY, INC.
Well SEITZ-BARNHARDT "C" #1-34
Field RIDGEWAY
County TREGO State KANSAS

Location: API # : 15-195-22733-0000
330' FNL & 1700' FEL

Permanent Datum GROUND LEVEL Elevation 2191
Log Measured From KELLY BUSHING 8' A.G.L.
Drilling Measured From KELLY BUSHING

SEC 34 TWP 12S RGE 21W

Other Services
CDL/CNL
MEL/SON

Elevation
K.B. 2199
D.F. 2197
G.L. 2191

Date	11/3/11
Run Number	ONE
Depth Driller	3940
Depth Logger	3944
Bottom Logged Interval	3942
Top Log Interval	00
Casing Driller	8 5/8" @ 221
Casing Logger	221
Bit Size	7 7/8
Type Fluid in Hole	CHEMICAL MUD
Density / Viscosity	9.0/56
pH / Fluid Loss	9.5/8.0
Source of Sample	FLOWLINE
Rim @ Meas. Temp	.80 @ 58F
Rmf @ Meas. Temp	.60 @ 58F
Rmc @ Meas. Temp	.96 @ 58F
Source of Rmf / Rmc	MEASURED
Rim @ BHT	.38 @ 116F
Time Circulation Stopped	2 HOURS
Time Logger on Bottom	
Maximum Recorded Temperature	116F
Equipment Number	680
Location	HAYS, KS.
Recorded By	JASON CAPPELLUCCI
Witnessed By	MARC DOWNING

<<< Fold Here >>>

All interpretations are opinions based on inferences from electrical or other measurements and we cannot and do not guarantee the accuracy or correctness of any interpretation, and we shall not, except in the case of gross or willful negligence on our part, be liable or responsible for any loss, costs, damages, or expenses incurred or sustained by anyone resulting from any interpretation made by any of our officers, agents or employees. These interpretations are also subject to our general terms and conditions set out in our current Price Schedule.

Comments

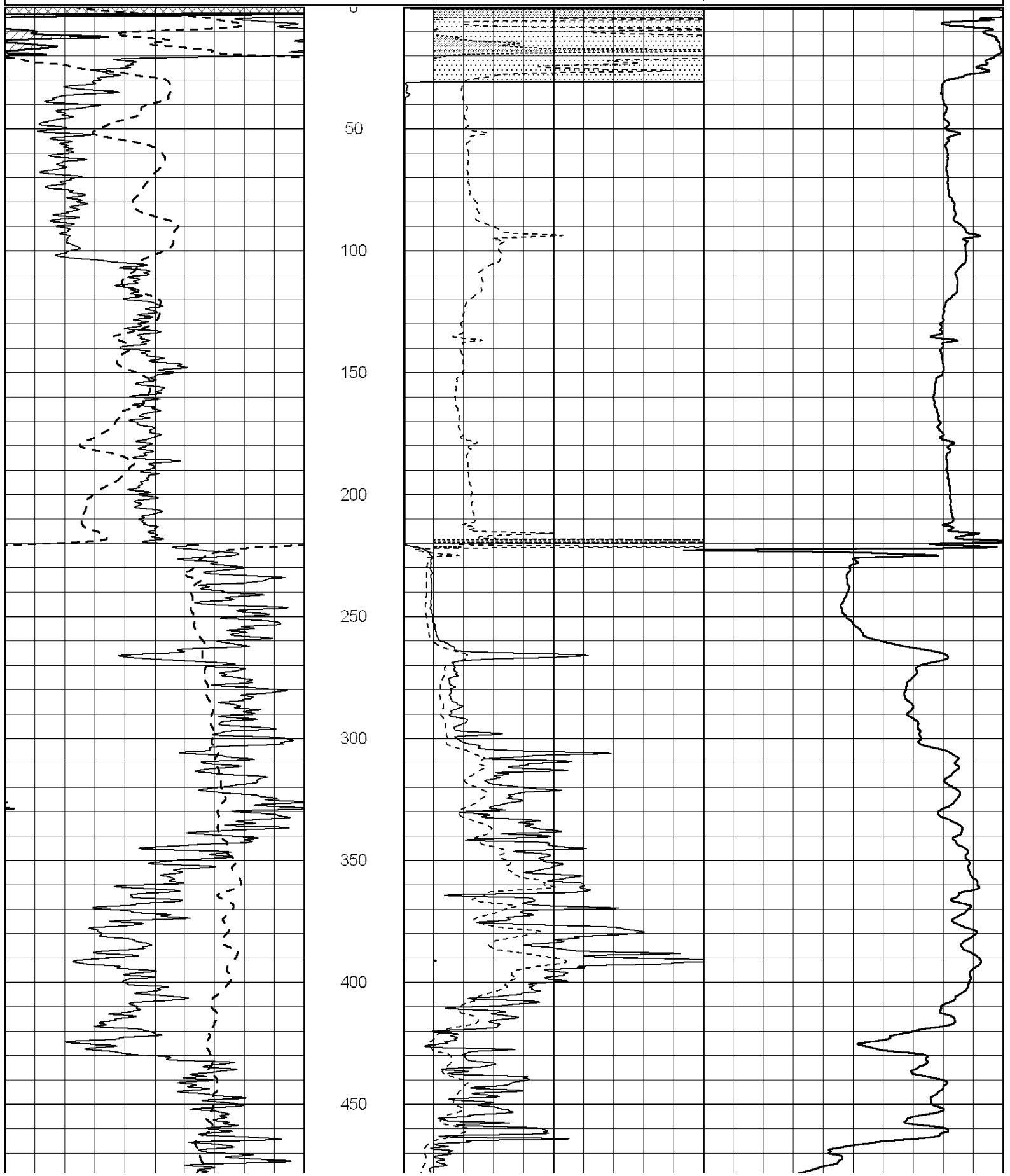
THANK YOU FOR USING SUPERIOR WELL SERVICE (785) 628-6395
DIRECTIONS
I-70 & RIGA EXIT - 3/4 MILES N. TO RD. L - 3/4 E. - S. INTO

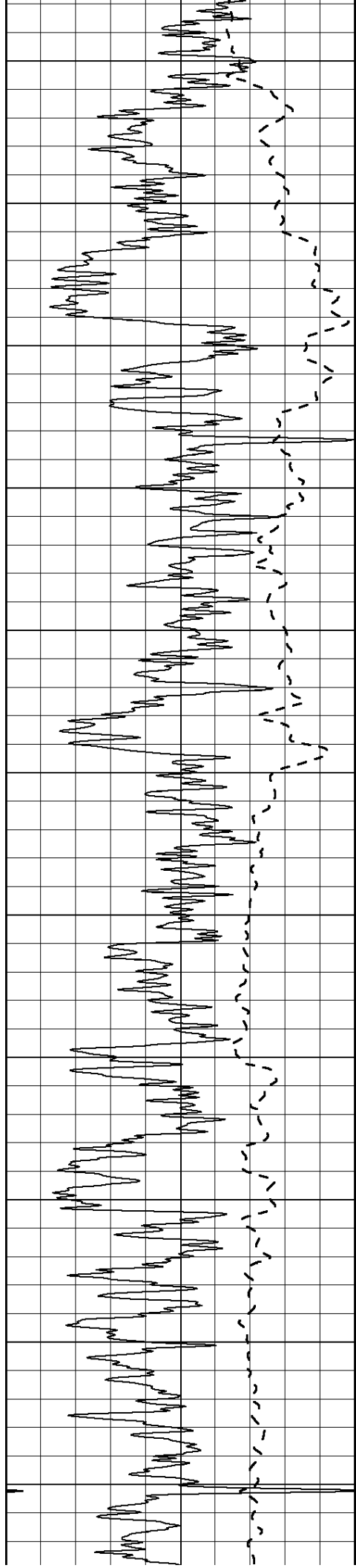
0	Gamma Ray (GAPI)	150
-100	SP (mV)	100

0	RLL3 (Ohm-m)	50
0	Deep Induction (Ohm-m)	50

1000	CILD (mmho/m)	0
------	---------------	---

50	RILD X10 (Ohm-m)	500
50	RLL3 X10 (Ohm-m)	500





500

550

600

650

700

750

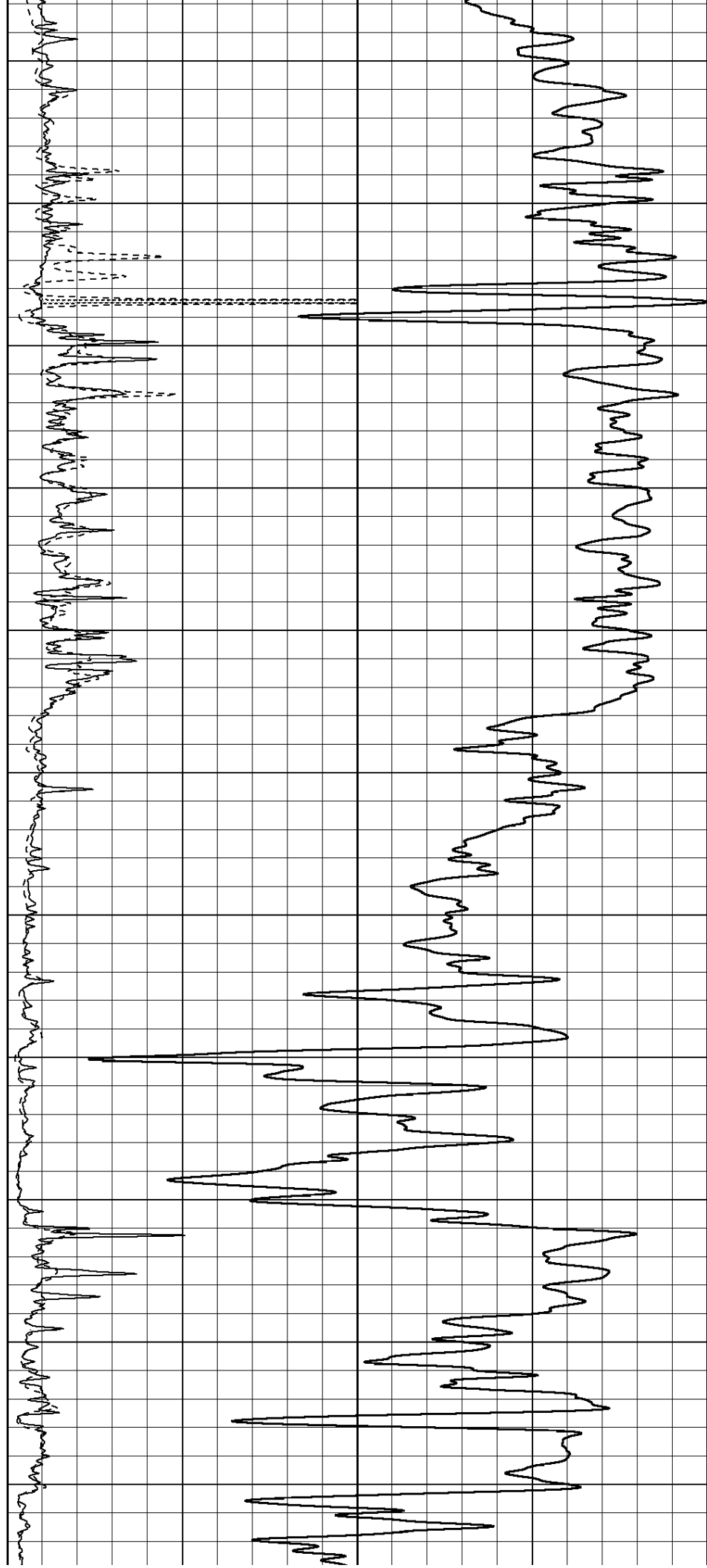
800

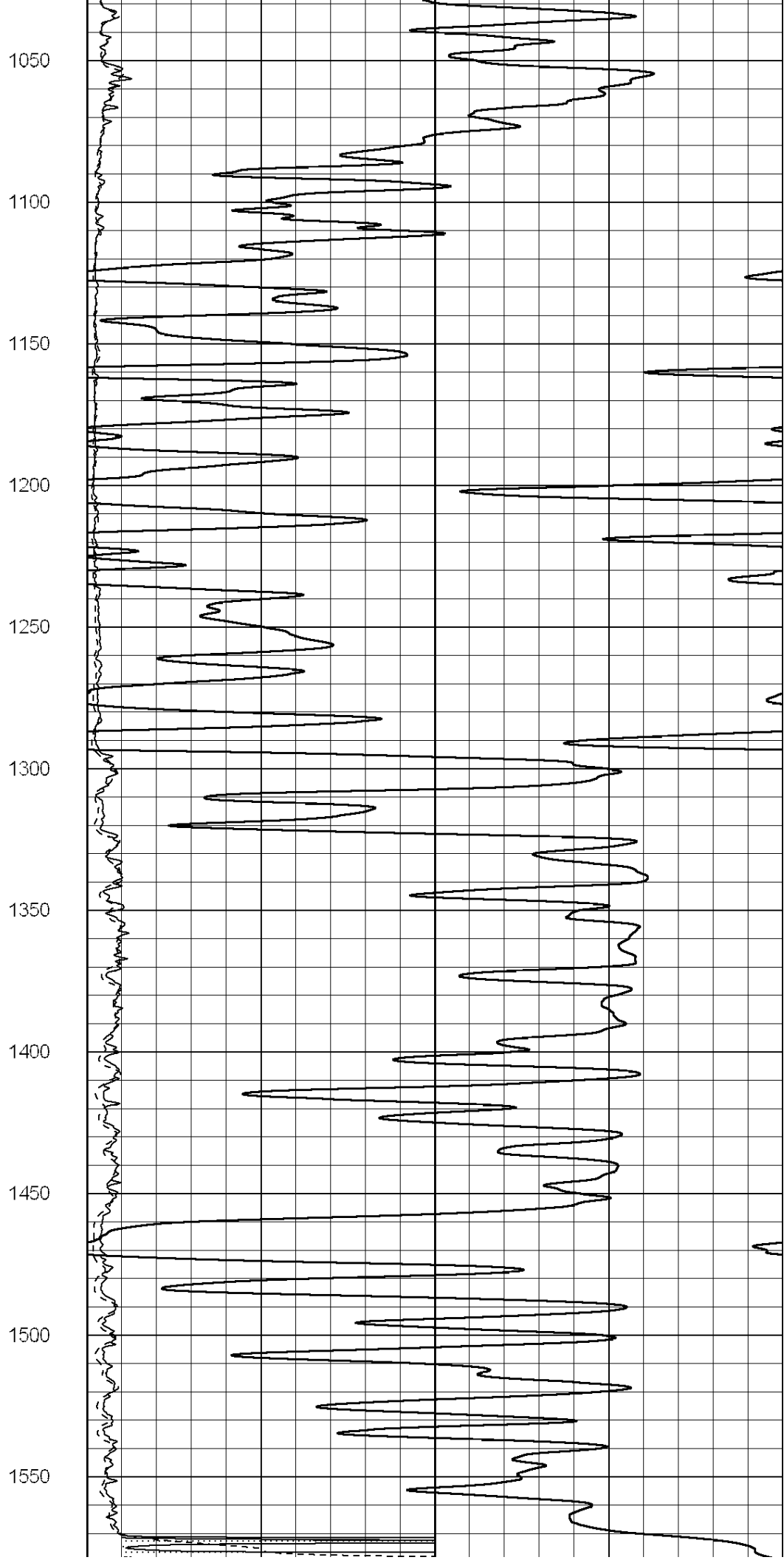
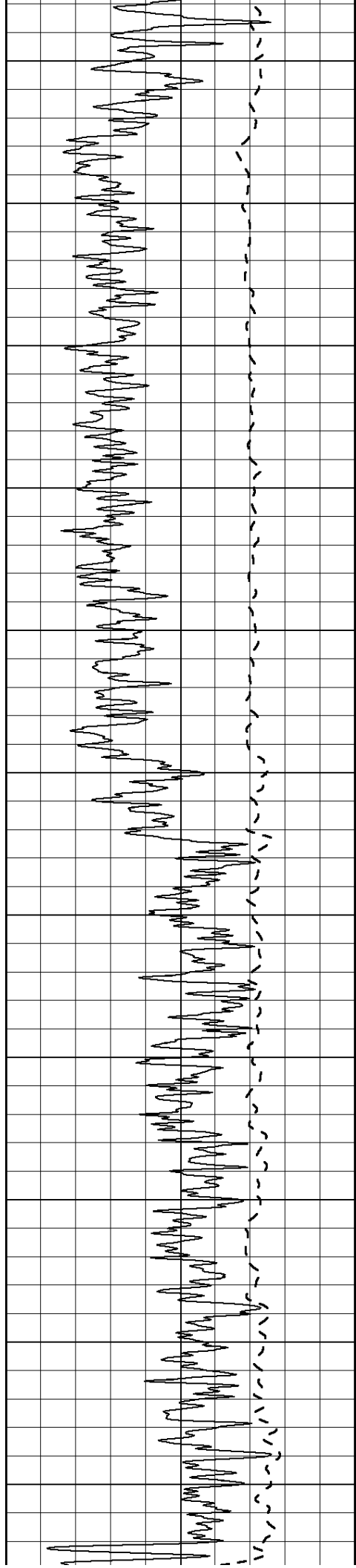
850

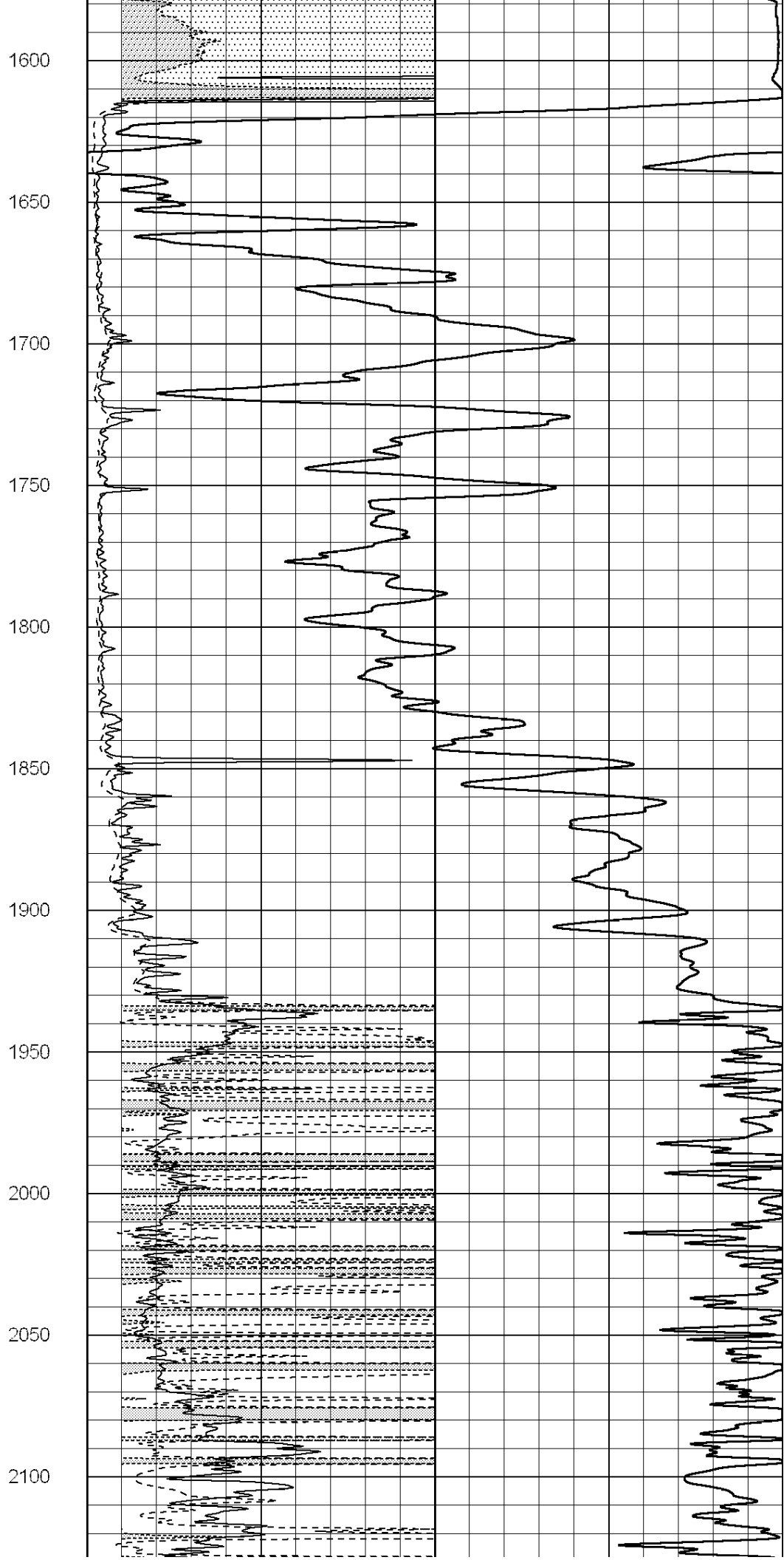
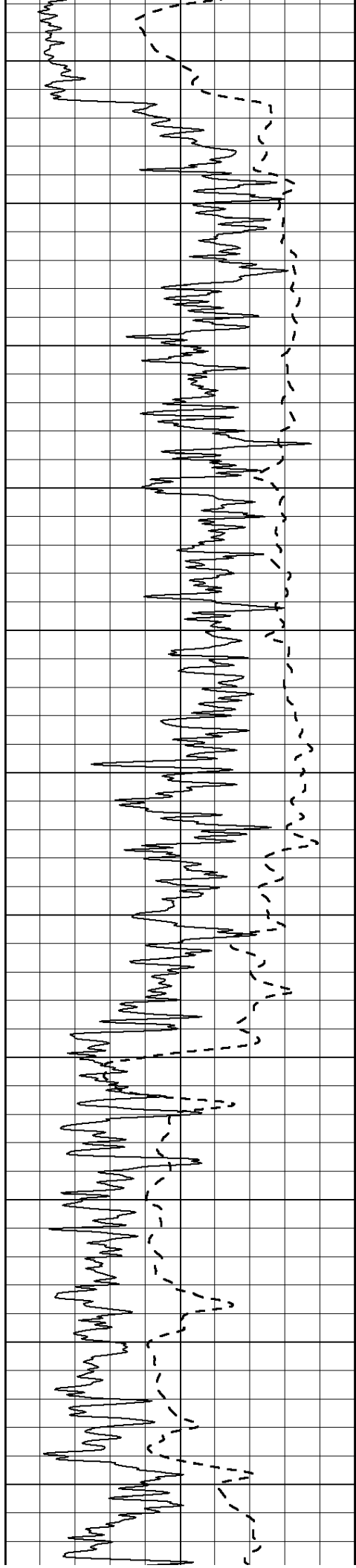
900

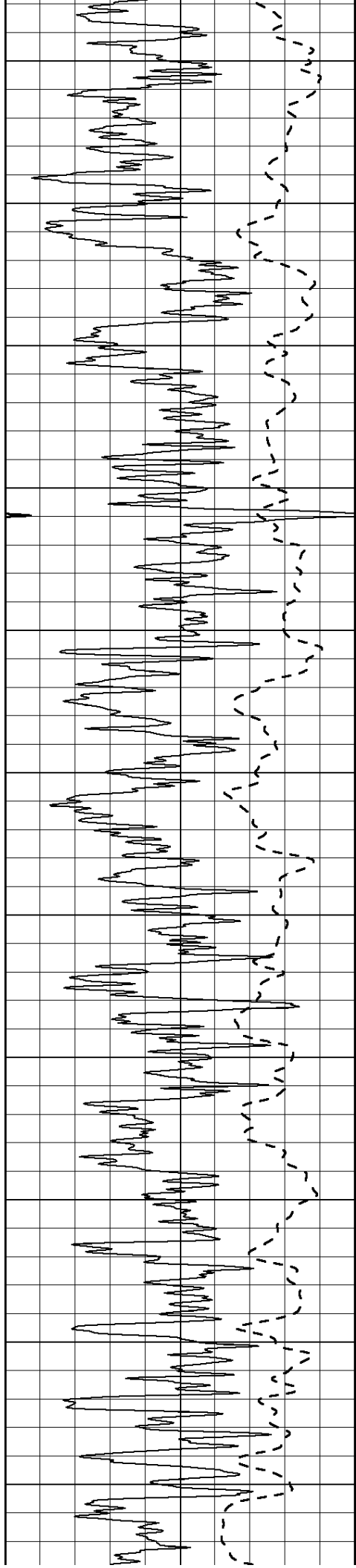
950

1000









2150

2200

2250

2300

2350

2400

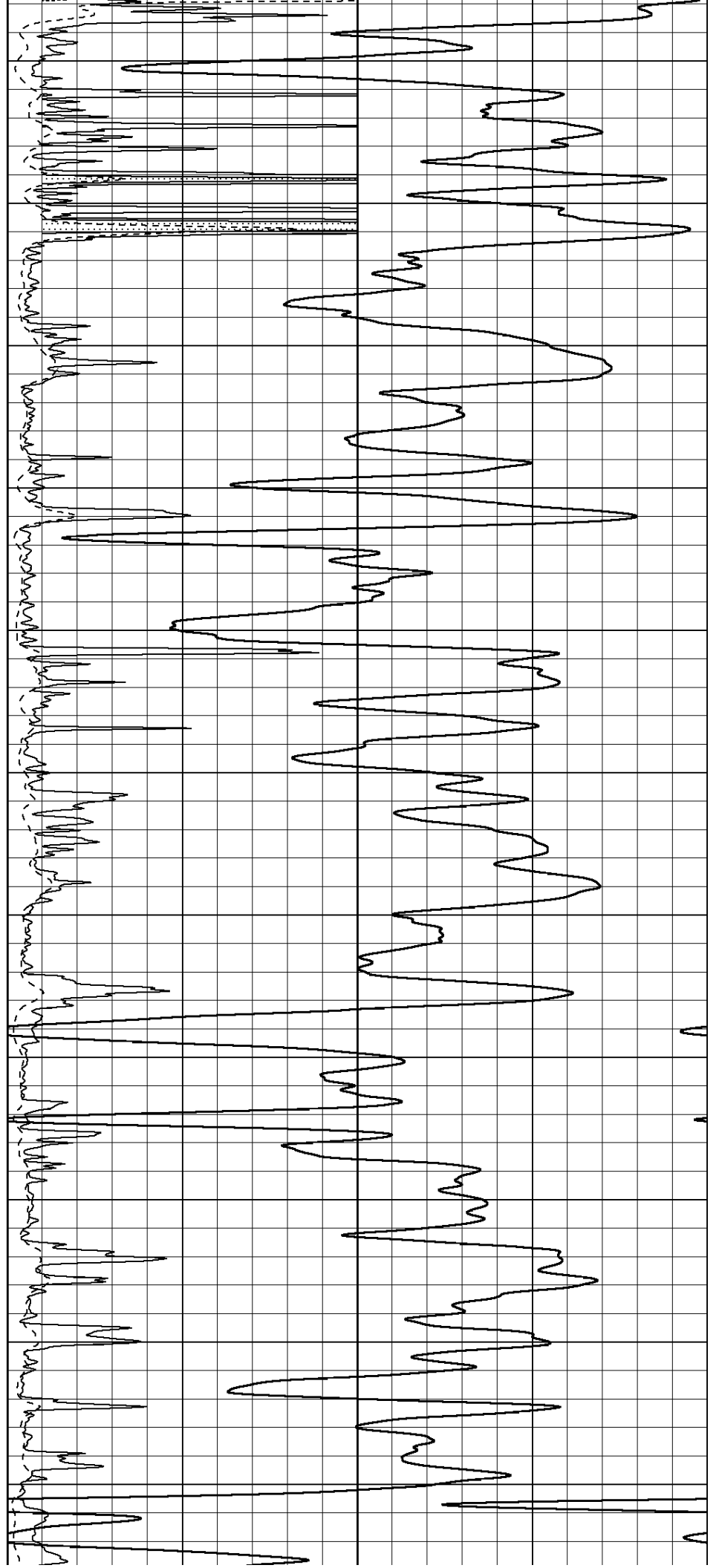
2450

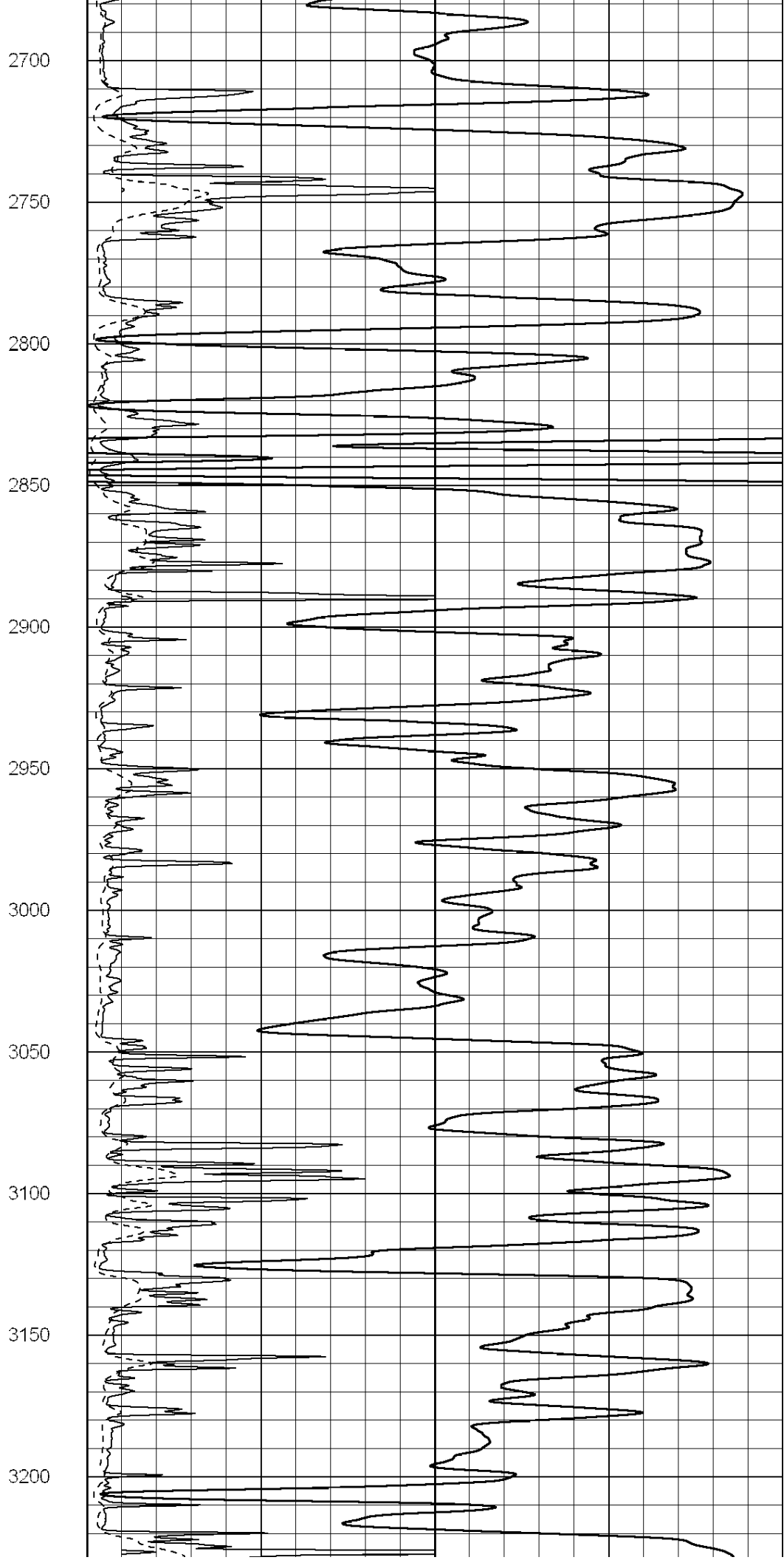
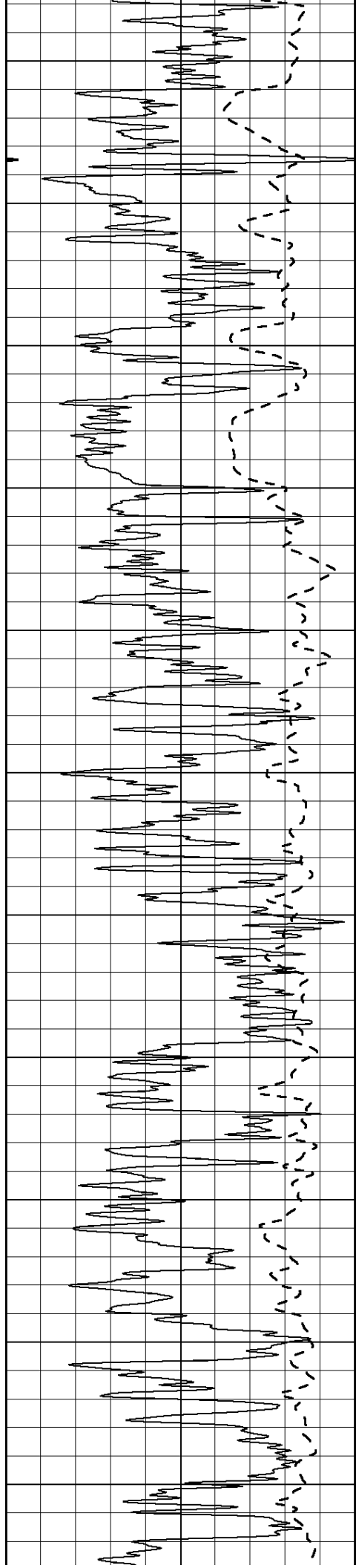
2500

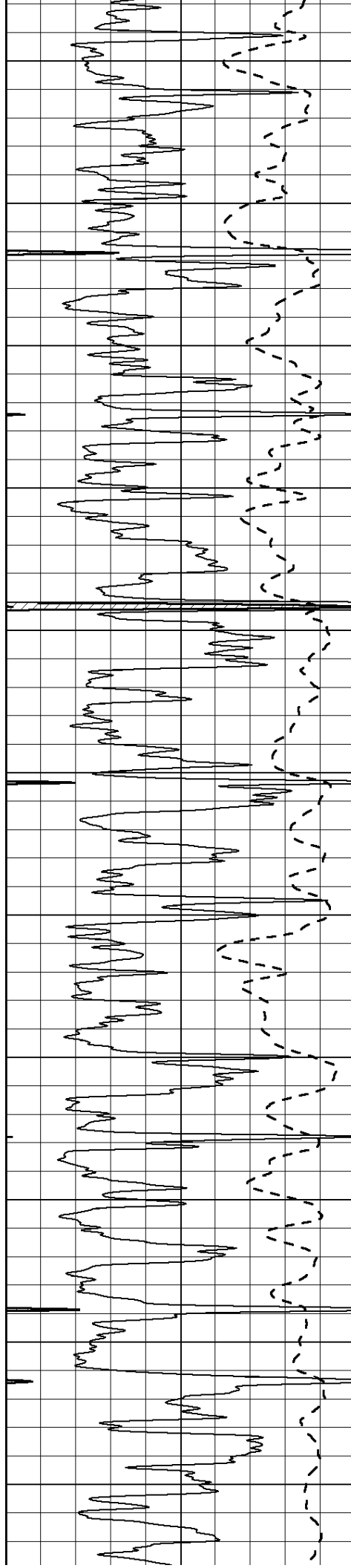
2550

2600

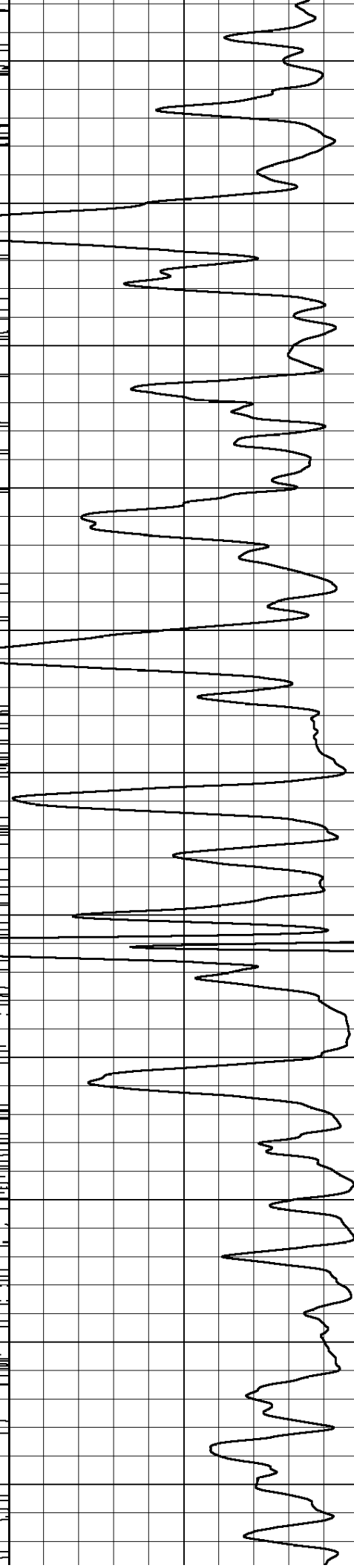
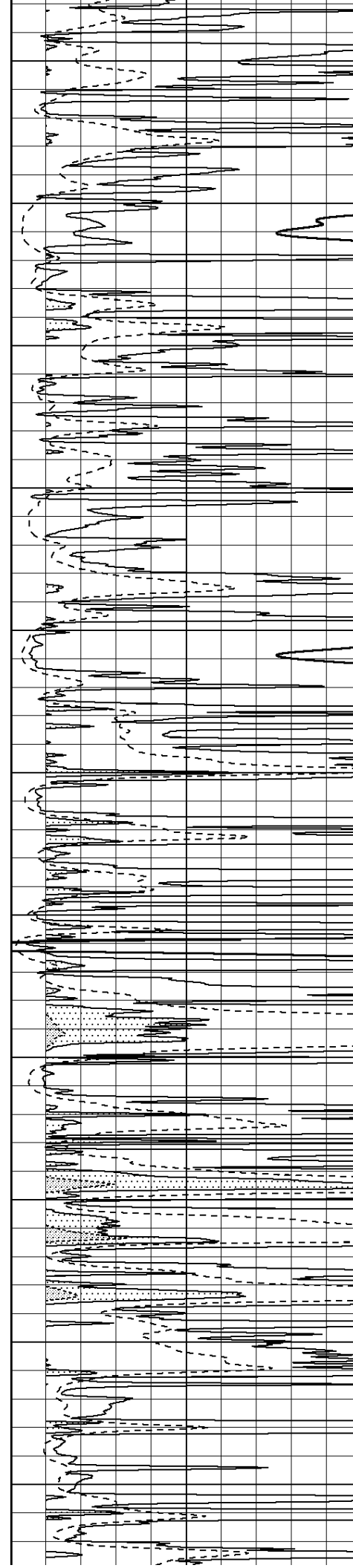
2650

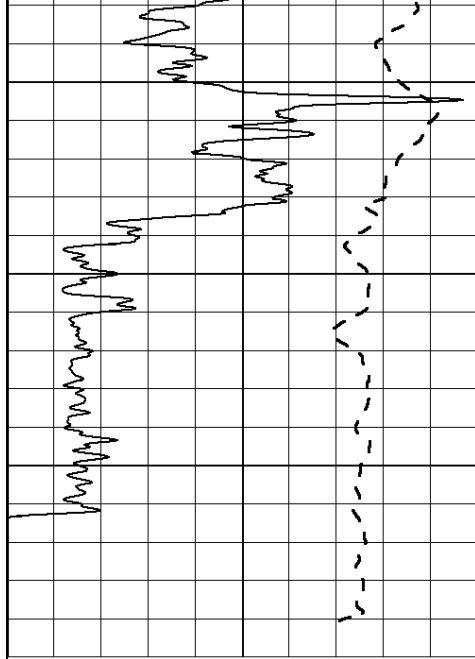




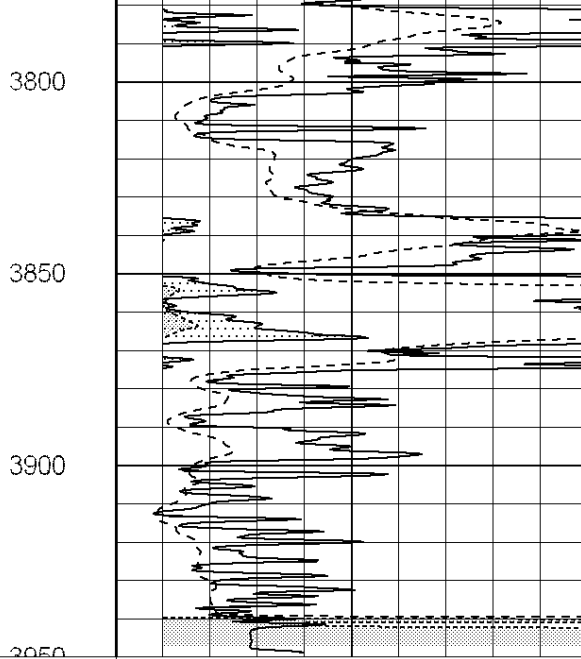


3250
3300
3350
3400
3450
3500
3550
3600
3650
3700
3750

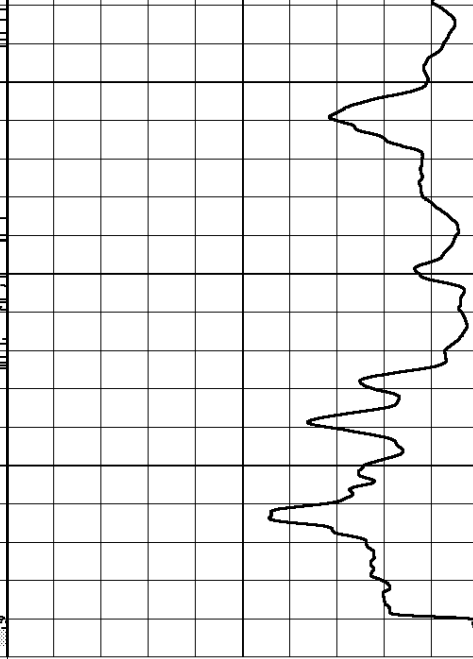




0	Gamma Ray (GAPI)	150
-100	SP (mV)	100



0	RLL3 (Ohm-m)	50
0	Deep Induction (Ohm-m)	50



1000	CILD (mmho/m)	0
------	---------------	---

50	RILD X10 (Ohm-m)	500
50	RLL3 X10 (Ohm-m)	500



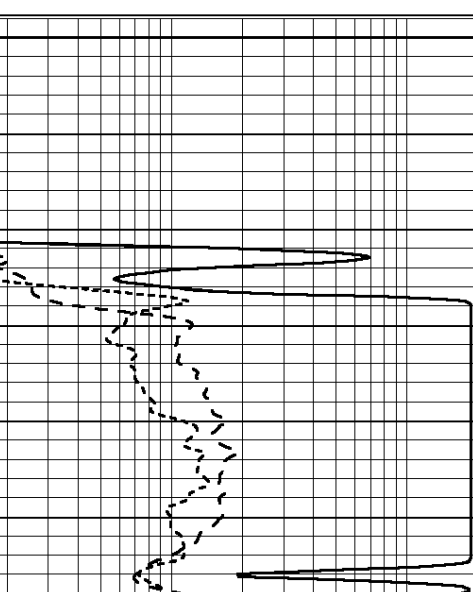
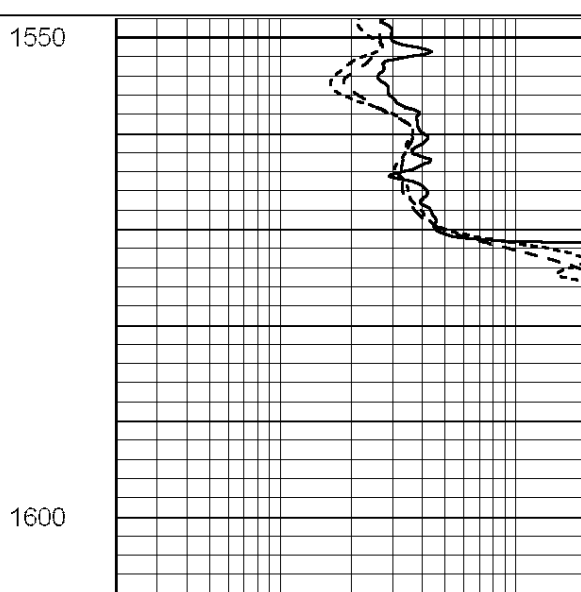
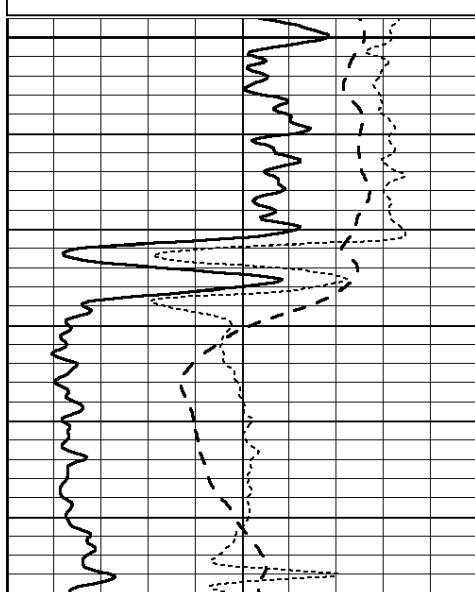
SUPERIOR
Hays,
Kansas

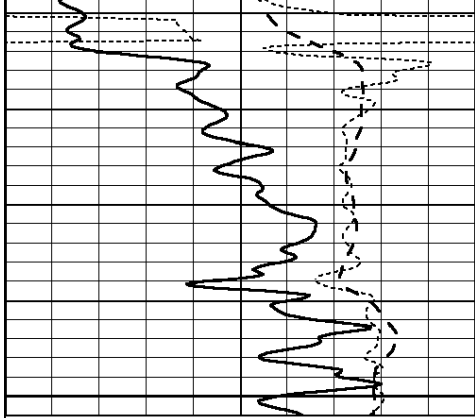
ANHYDRITE

Database File: 007899ddn.db
 Dataset Pathname: pass3.3
 Presentation Format: _dil
 Dataset Creation: Thu Nov 03 10:35:33 2011 by Calc Open-Cased 090629
 Charted by: Depth in Feet scaled 1:240

0	GAMMA RAY (GAPI)	150
-100	SP (mV)	100
-250	Rxo/Rt	50

0.2	SHALLOW GUARD (Ohm-m)	2000
0.2	MEDIUM INDUCTION (Ohm-m)	2000
0.2	DEEP INDUCTION (Ohm-m)	2000





0	GAMMA RAY (GAPI)	150
-100	SP (mV)	100
-250	Rxo/Rt	50

1650



0.2	SHALLOW GUARD (Ohm-m)	2000
0.2	MEDIUM INDUCTION (Ohm-m)	2000
0.2	DEEP INDUCTION (Ohm-m)	2000



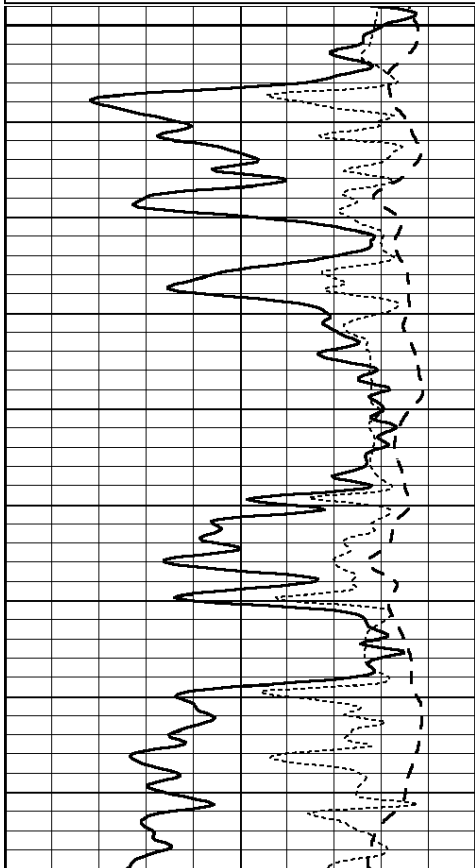
SUPERIOR
Hays,
Kansas

MAIN SECTION

Database File: 007899ddn.db
 Dataset Pathname: pass3.1
 Presentation Format: _dil
 Dataset Creation: Thu Nov 03 10:18:35 2011 by Calc Open-Cased 090629
 Charted by: Depth in Feet scaled 1:240

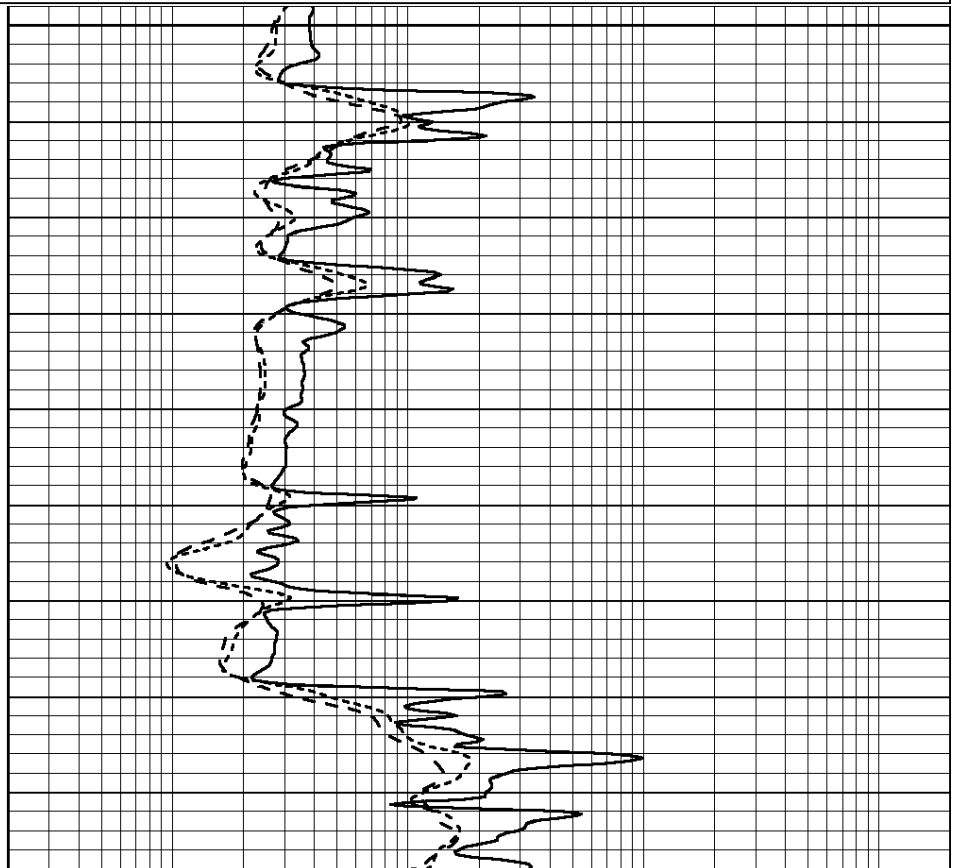
0	GAMMA RAY (GAPI)	150
-100	SP (mV)	100
-250	Rxo/Rt	50

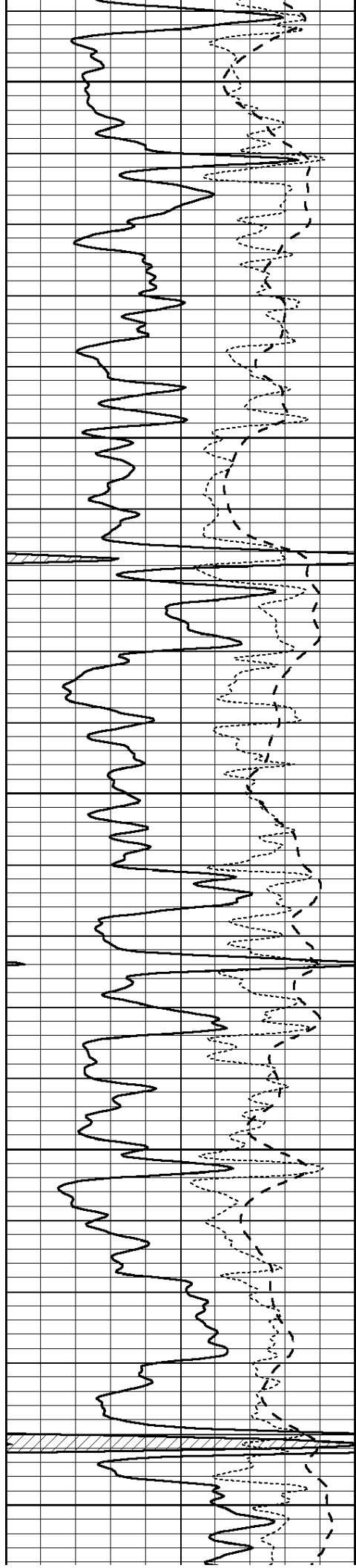
0.2	SHALLOW GUARD (Ohm-m)	2000
0.2	MEDIUM INDUCTION (Ohm-m)	2000
0.2	DEEP INDUCTION (Ohm-m)	2000



3150

3200





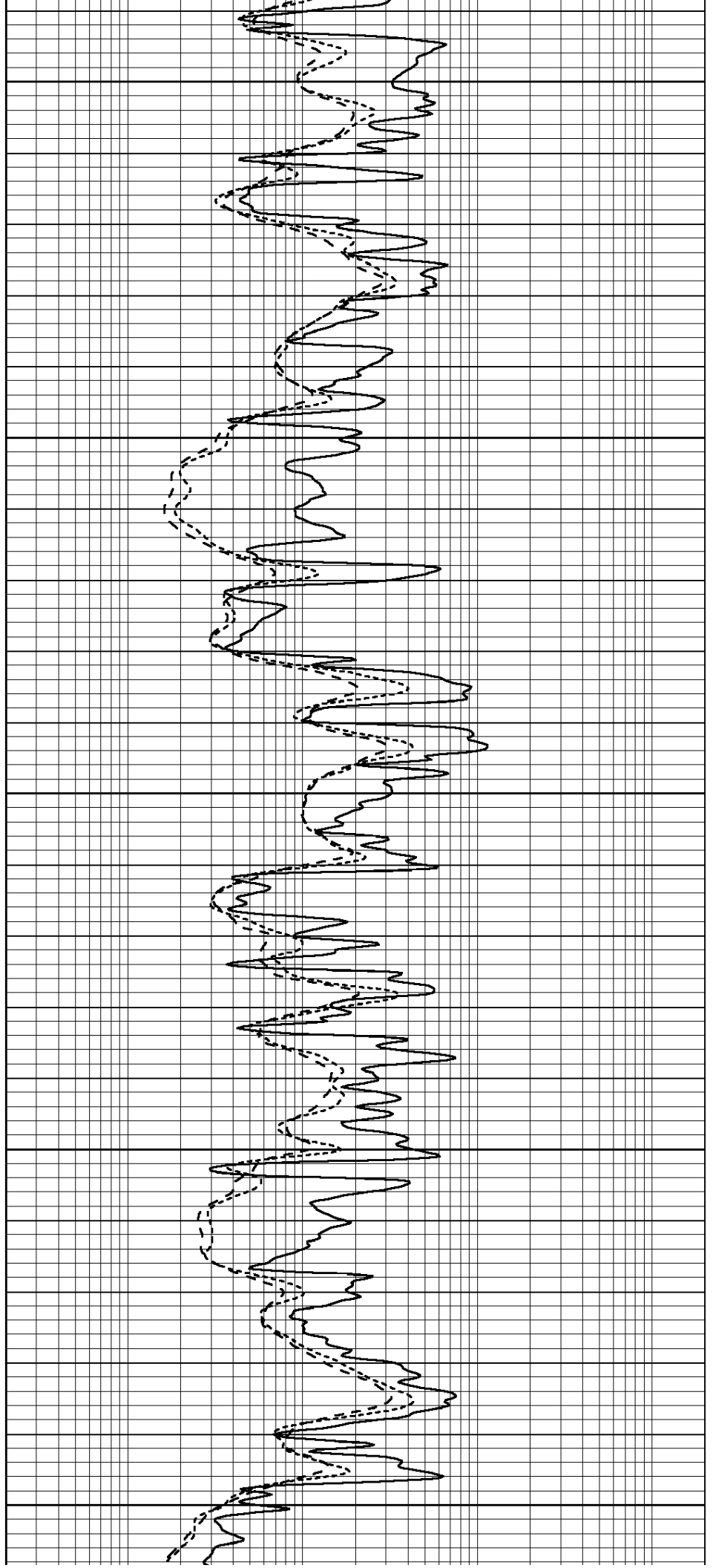
3250

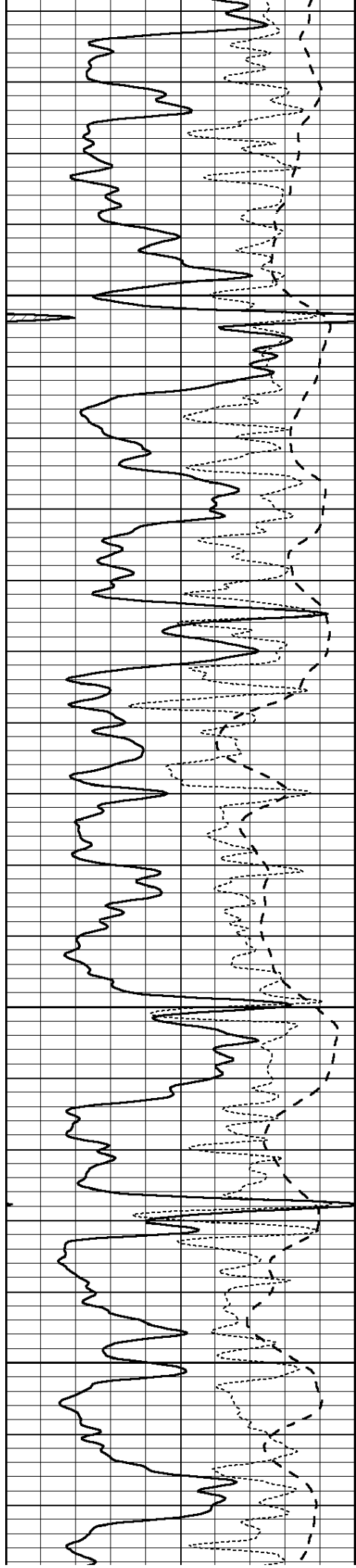
3300

3350

3400

3450



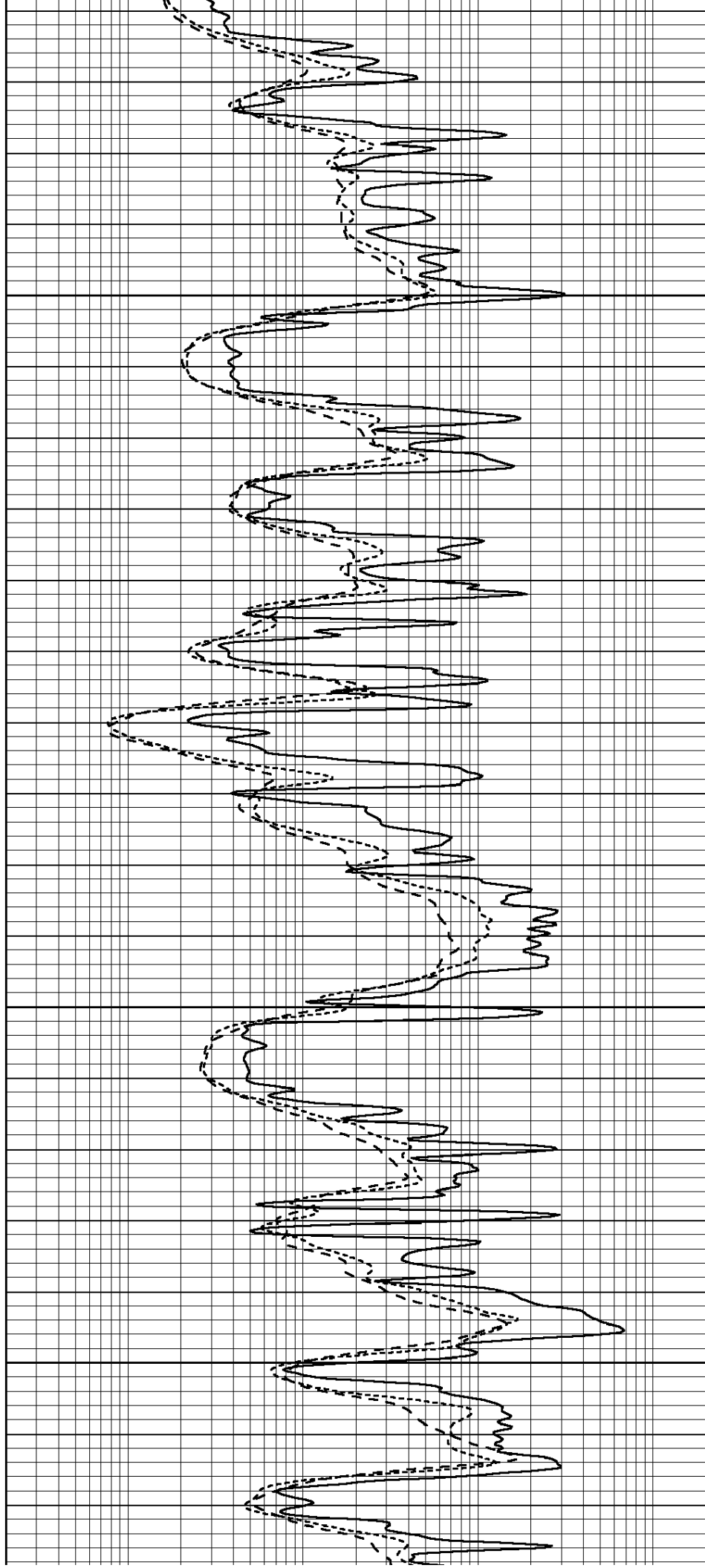


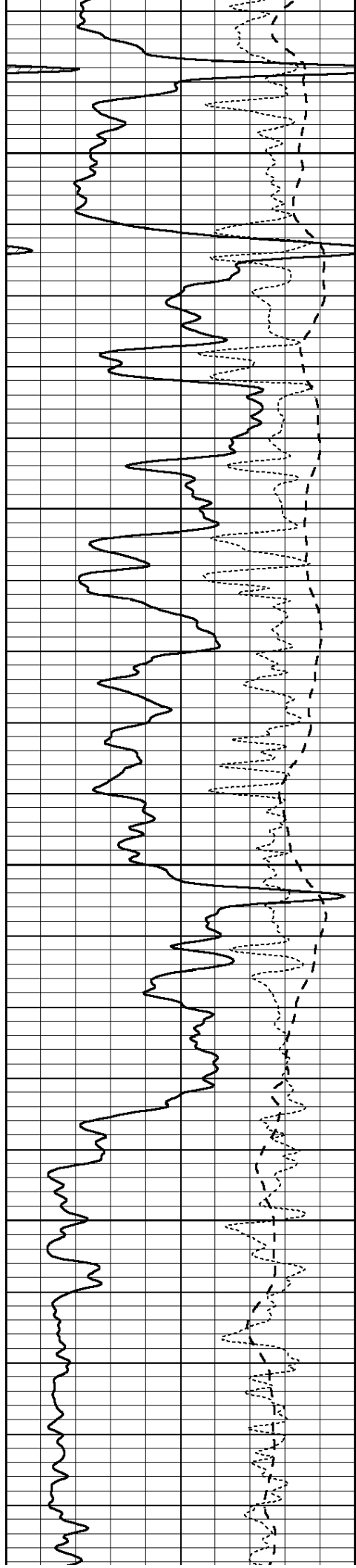
3500

3550

3600

3650



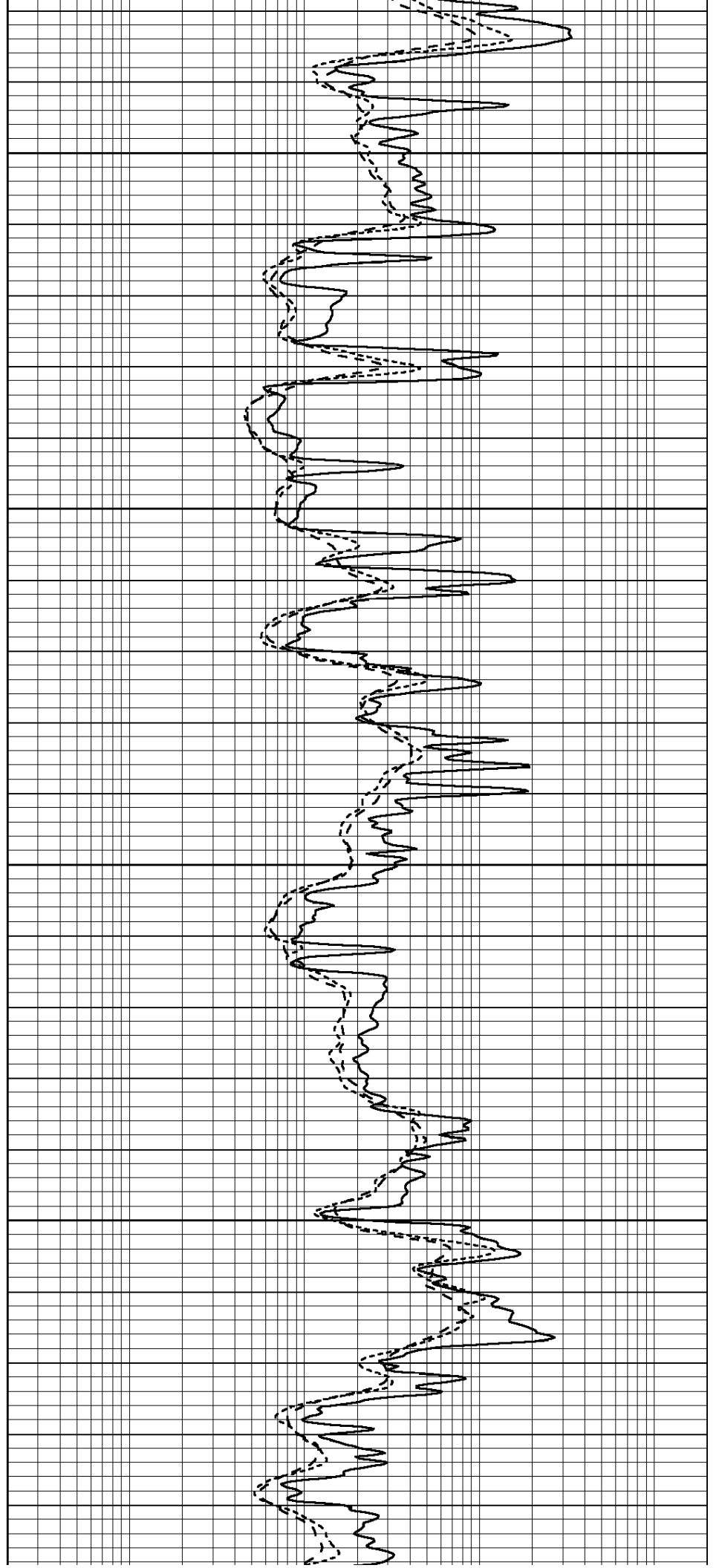


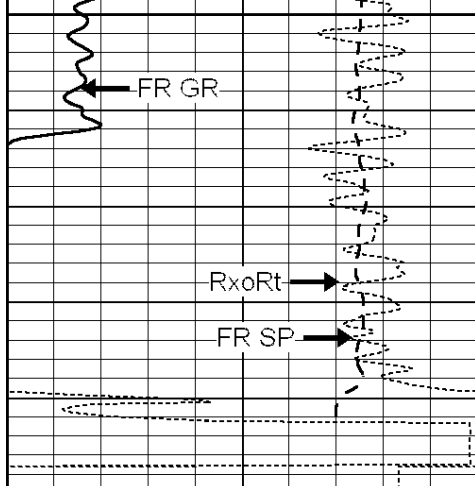
3700

3750

3800

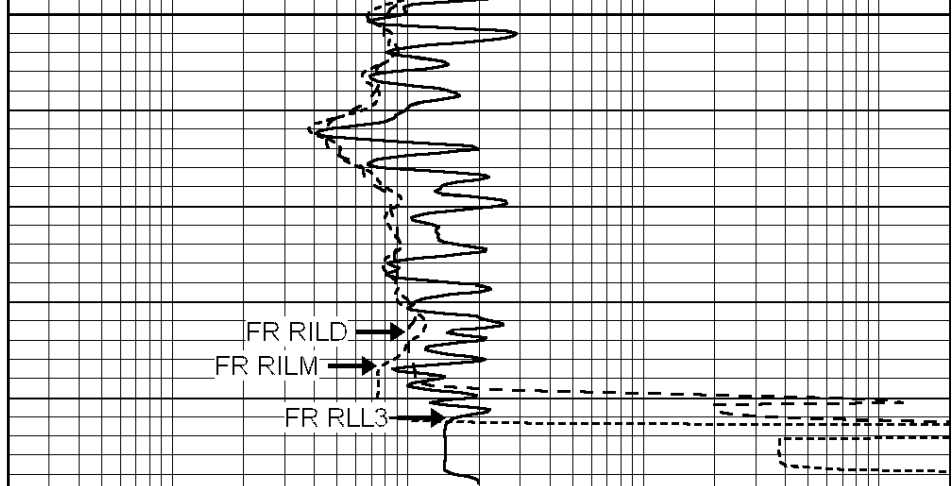
3850





3900
LTD 3944
3850

0	GAMMA RAY (GAPI)	150
-100	SP (mV)	100
-250	Rxo/Rt	50



0.2	SHALLOW GUARD (Ohm-m)	2000
0.2	MEDIUM INDUCTION (Ohm-m)	2000
0.2	DEEP INDUCTION (Ohm-m)	2000



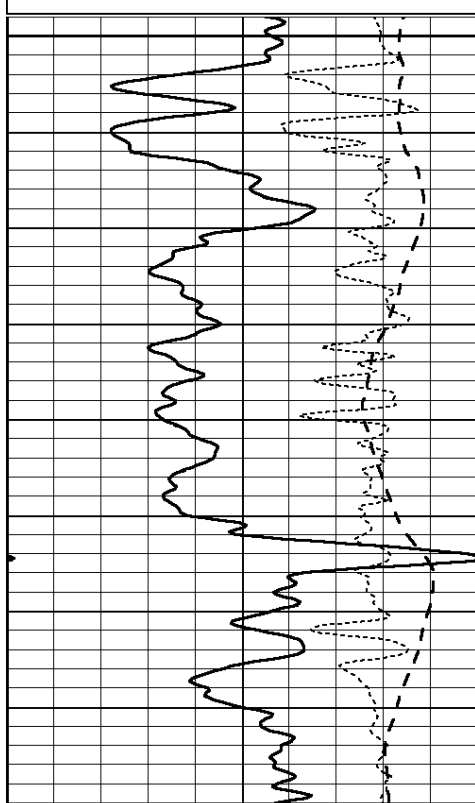
SUPERIOR
Hays,
Kansas

REPEAT SECTION

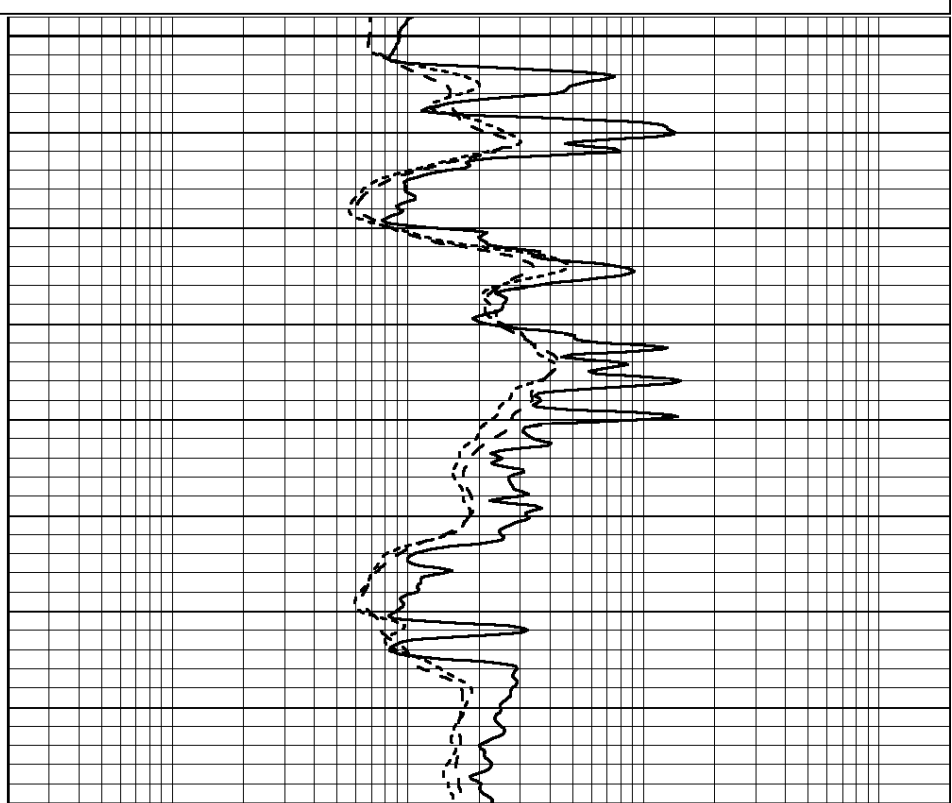
Database File: 007899ddn.db
 Dataset Pathname: pass2.1
 Presentation Format: _dil
 Dataset Creation: Thu Nov 03 10:20:49 2011 by Calc Open-Cased 090629
 Charted by: Depth in Feet scaled 1:240

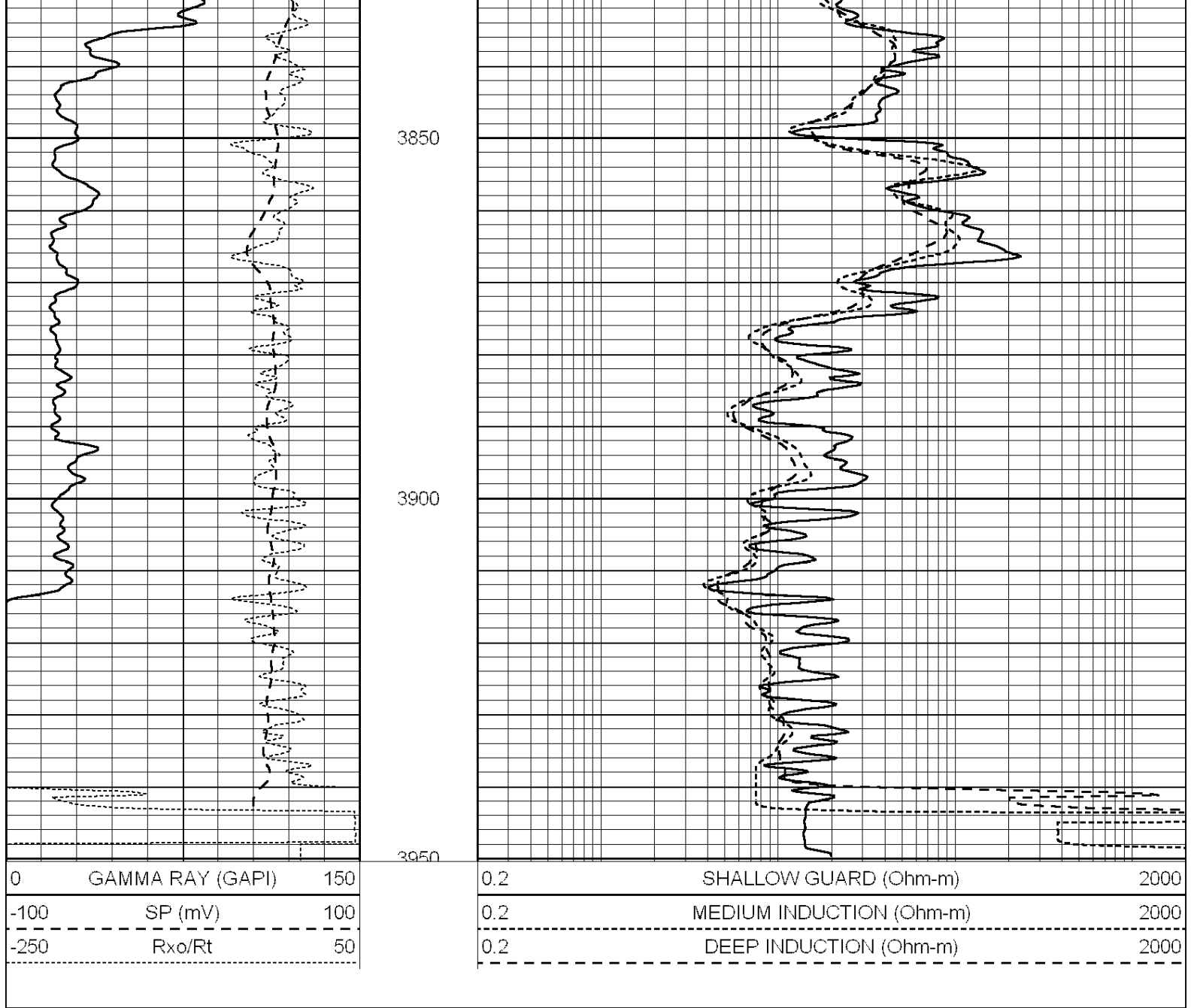
0	GAMMA RAY (GAPI)	150
-100	SP (mV)	100
-250	Rxo/Rt	50

0.2	SHALLOW GUARD (Ohm-m)	2000
0.2	MEDIUM INDUCTION (Ohm-m)	2000
0.2	DEEP INDUCTION (Ohm-m)	2000



3750
3800





Calibration Report

Database File: 007899ddn.db
 Dataset Pathname: pass2.1
 Dataset Creation: Thu Nov 03 10:20:49 2011 by Calc Open-Cased 090629

Dual Induction Calibration Report

Serial-Model: PROBE7-DILG
 Surface Cal Performed: Wed Jul 30 06:14:24 2008
 Downhole Cal Performed: Mon Jul 28 12:02:56 2008
 After Survey Verification Performed: Mon Jul 28 12:02:56 2008

Surface Calibration

Loop:	Readings			References			Results	
	Air	Loop		Air	Loop		m	b
Deep	-0.014	0.629	V	0.000	400.000	mmho/m	621.923	8.759
Medium	0.039	0.728	V	0.000	464.000	mmho/m	673.322	-26.058
Internal:	Zero	Cal		Zero	Cal		m	b
Deep	0.011	0.610	V	0.000	400.000	mmho/m	667.135	-7.256

Medium 0.005 0.712 V 0.000 464.000 mmho/m 655.677 -3.102

Downhole Calibration

	Readings			References			Results	
	Zero	Cal		Zero	Cal		m'	b'
Deep	0.000	0.000	mmho/m	14.508	388.384	mmho/m	1.000	0.000
Medium	0.000	0.000	mmho/m	166.367	504.400	mmho/m	1.000	0.000
LL3		7.500	V		1400.000	Ohm-m		
		0.000	V		20.000	Ohm-m		
		-7.200	V		4000.000	mmho-m		

After Survey Verification

	Readings			Targets			Results	
	Zero	Cal		Zero	Cal		m'	b'
Deep	0.000	0.000	mmho/m	0.000	0.000	mmho/m	0.000	0.000
Medium	0.000	0.000	mmho/m	0.000	0.000	mmho/m	0.000	0.000
LL3		1.000	Ohm-m		1.000	Ohm-m		
		0.000	Ohm-m		0.000	Ohm-m		
		1.000	mmho-m		1.000	mmho-m		

Compensated Density Calibration Report

Serial-Model: GEAR4-GEARHART
 Source / Verifier: 143 / 143
 Master Calibration Performed: Sat Jul 16 17:35:04 2011

Master Calibration

	Density		Far Detector	Near Detector	
Magnesium	1.710	g/cc	1015.91	497.51	cps
Aluminum	2.600	g/cc	227.67	350.20	cps
Spine Angle = 76.79			Density/Spine Ratio = 0.579		
	Size		Reading		
Small Ring	8.00	in	2.24	V	
Large Ring	14.00	in	4.38	V	

Compensated Neutron Calibration Report

Serial Number: 6I
 Tool Model: G

CALIBRATION

Detector	Readings		Target		Normalization
Short Space	1.00	cps	1.00	cps	1.0000
Long Space	1.00	cps	1.00	cps	1.0000

Gamma Ray Calibration Report

Serial Number: #8
 Tool Model: OPEN
 Performed: Mon Jun 13 16:56:43 2011

Calibrator Value: 150.0 GAPI

Background Reading: 0.0 cps
 Calibrator Reading: 175.0 cps

Sensitivity: 0.8371 GAPI/cps