



SUPERIOR
Hays,
Kansas

SONIC LOG

Company DOWNING NELSON OIL CO., INC.
Well SEITZ-BARNHARDT "C" #1-34
Field RIDGEWAY
County TREGO
State KANSAS

Company DOWNING NELSON OIL COMPANY, INC.
Well SEITZ-BARNHARDT "C" #1-34
Field RIDGEWAY
County TREGO State KANSAS

Location: 330' FNL & 1700' FEL
API # : 15-195-22733-0000
SEC 34 TWP 12S RGE 21W
Permanent Datum GROUND LEVEL Elevation 2191
Log Measured From KELLY BUSHING 8' A.G.L.
Drilling Measured From KELLY BUSHING
Other Services CDL/CNL DIL/MEL
Elevation K.B. 2199 D.F. 2197 G.L. 2191

Date	11/3/11
Run Number	TWO
Depth Driller	3940
Depth Logger	3944
Bottom Logged Interval	3934
Top Log Interval	200
Casing Driller	8 5/8" @ 221
Casing Logger	221
Bit Size	7 7/8
Type Fluid in Hole	CHEMICAL MUD
Density / Viscosity	9.0/56
pH / Fluid Loss	9.5/8.0
Source of Sample	FLOWLINE
Rim @ Meas. Temp	.80 @ 58F
Rmf @ Meas. Temp	.60 @ 58F
Rmc @ Meas. Temp	.96 @ 58F
Source of Rmf / Rmc	MEASURED
Rim @ BHT	.38 @ 116F
Time Circulation Stopped	2 HOURS
Time Logger on Bottom	
Maximum Recorded Temperature	116F
Equipment Number	680
Location	HAYS, KS.
Recorded By	JASON CAPPELLUCCI
Witnessed By	MARC DOWNING

<<< Fold Here >>>

All interpretations are opinions based on inferences from electrical or other measurements and we cannot and do not guarantee the accuracy or correctness of any interpretation, and we shall not, except in the case of gross or willful negligence on our part, be liable or responsible for any loss, costs, damages, or expenses incurred or sustained by anyone resulting from any interpretation made by any of our officers, agents or employees. These interpretations are also subject to our general terms and conditions set out in our current Price Schedule.

Comments

THANK YOU FOR USING SUPERIOR WELL SERVICE (785) 628-6395
DIRECTIONS
I-70 & RIGA EXIT - 3/4 MILES N. TO RD. L - 3/4 E. - S. INTO

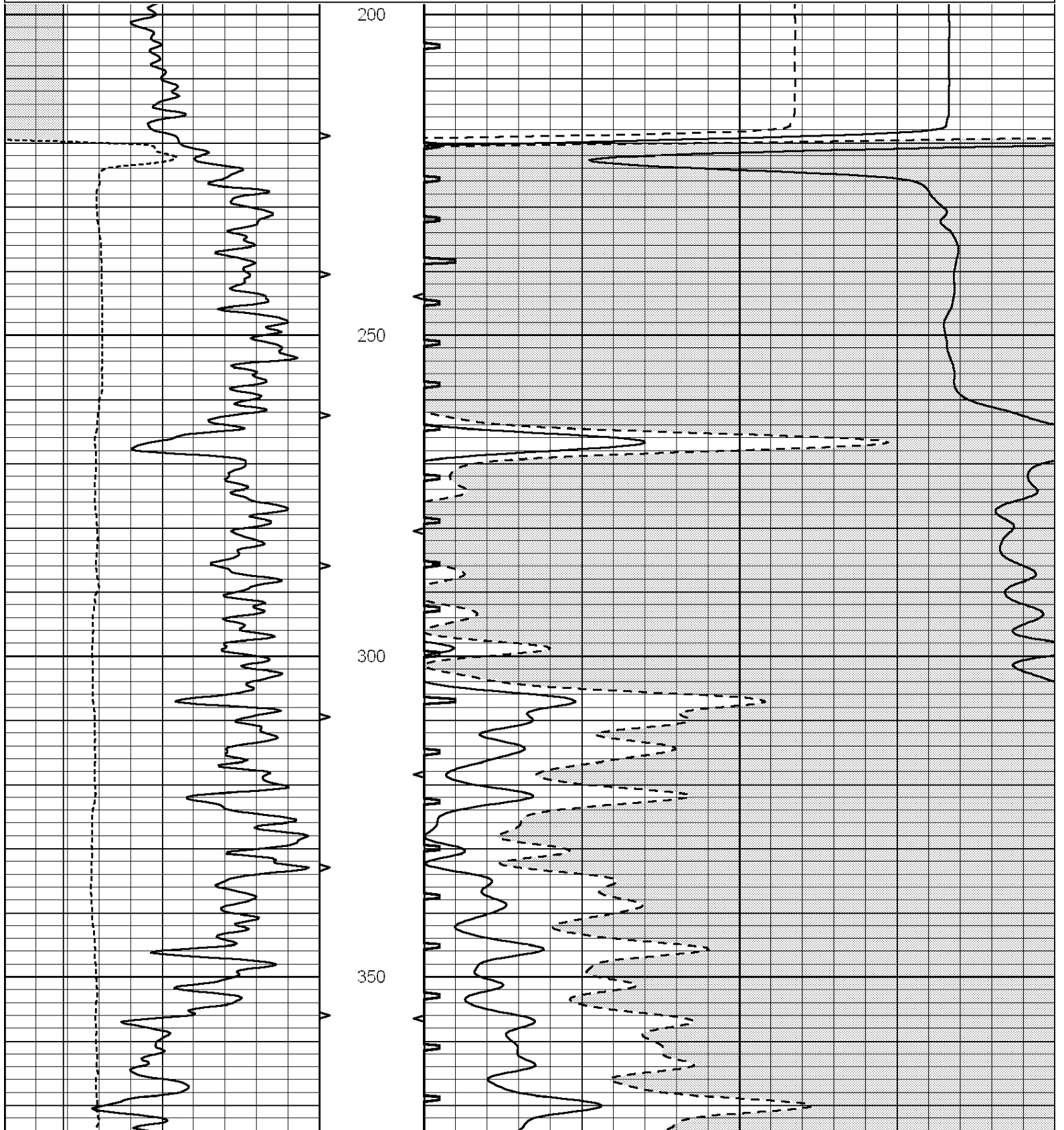


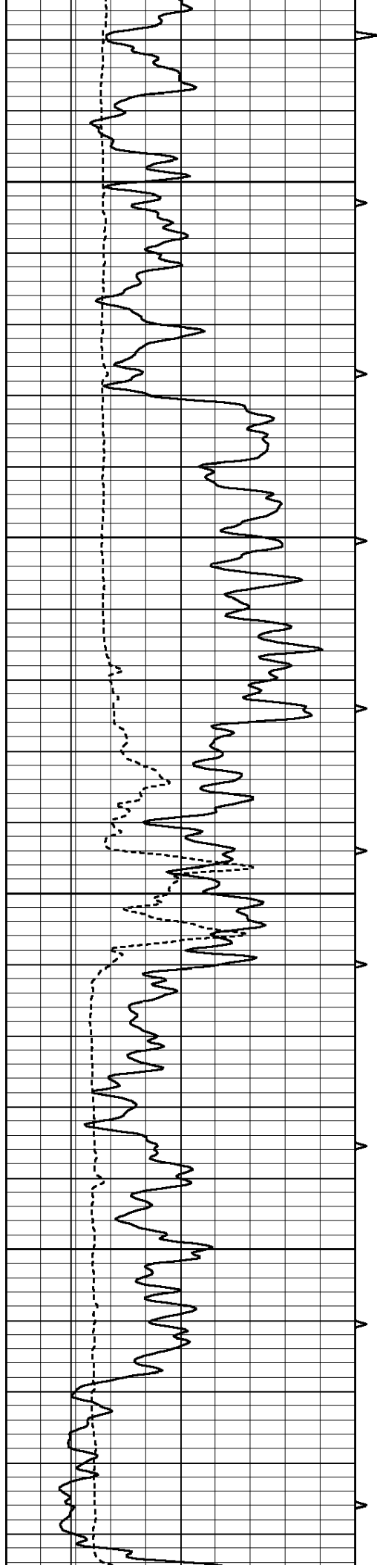
SUPERIOR
Hays,
Kansas

MAIN SECTION

Database File: 007899ddn.db
 Dataset Pathname: pass6.2
 Presentation Format: _slt
 Dataset Creation: Thu Nov 03 13:17:36 2011 by Calc Open-Cased 090629
 Charted by: Depth in Feet scaled 1:240

0	GAMMA RAY (GAPI)	150	ABHV	140	DELTA TIME (usec/ft)	40
6	CALIPER (in)	16	10 (ft3)	0	30	SONIC POROSITY (pu)
-----			TBHV	0	ITT (msec)	20
-----			0 (ft3)	10	-----	



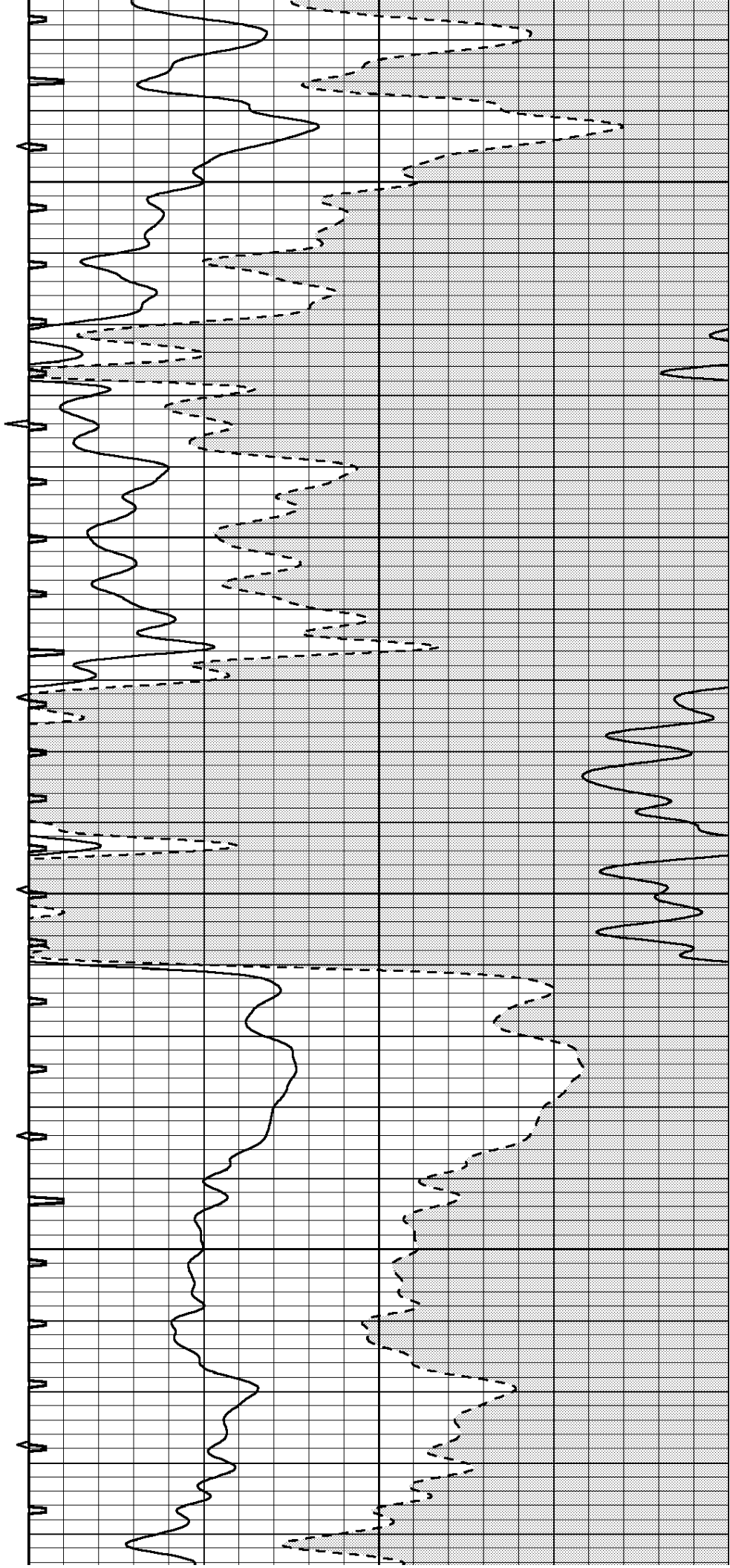


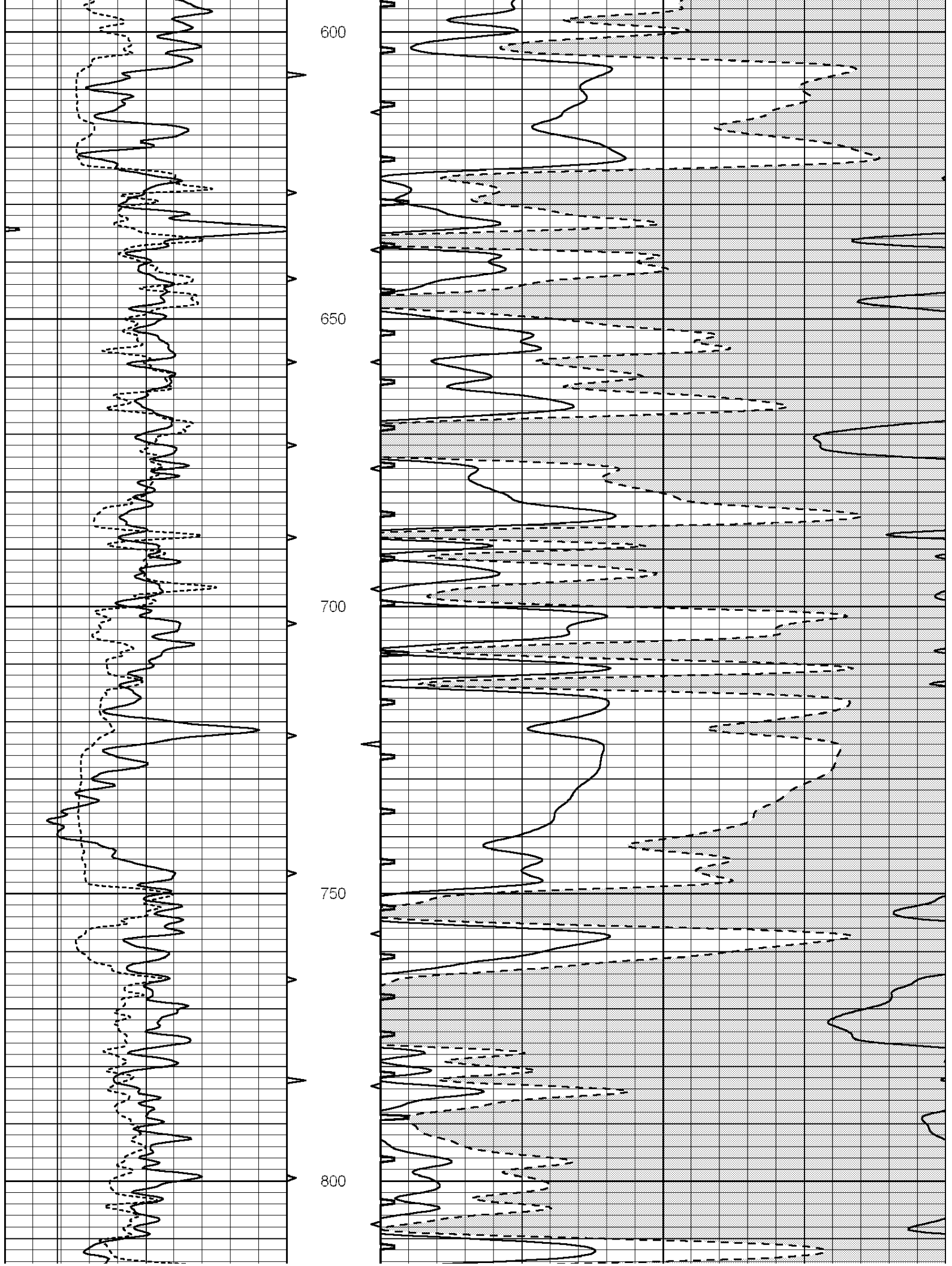
400

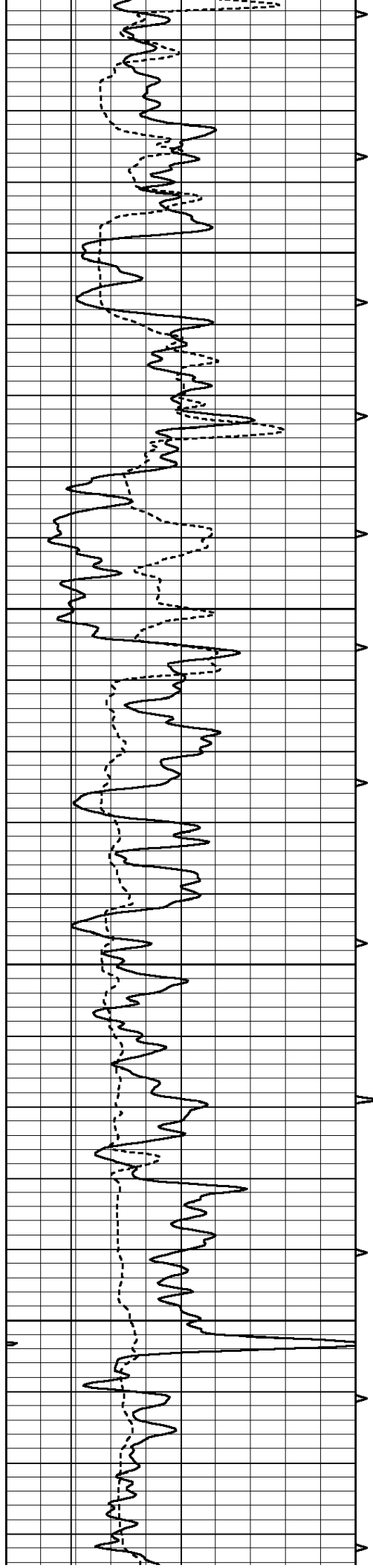
450

500

550





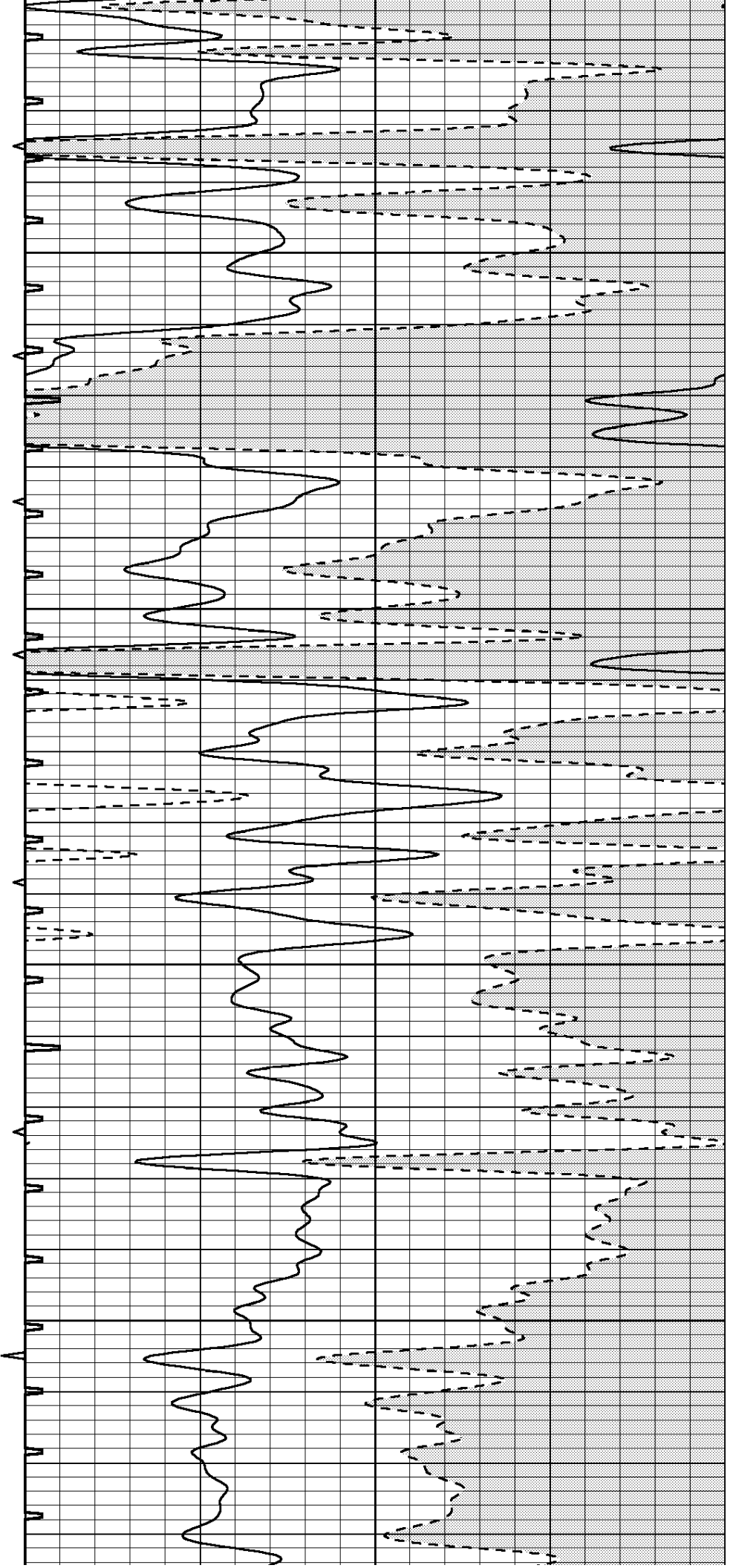


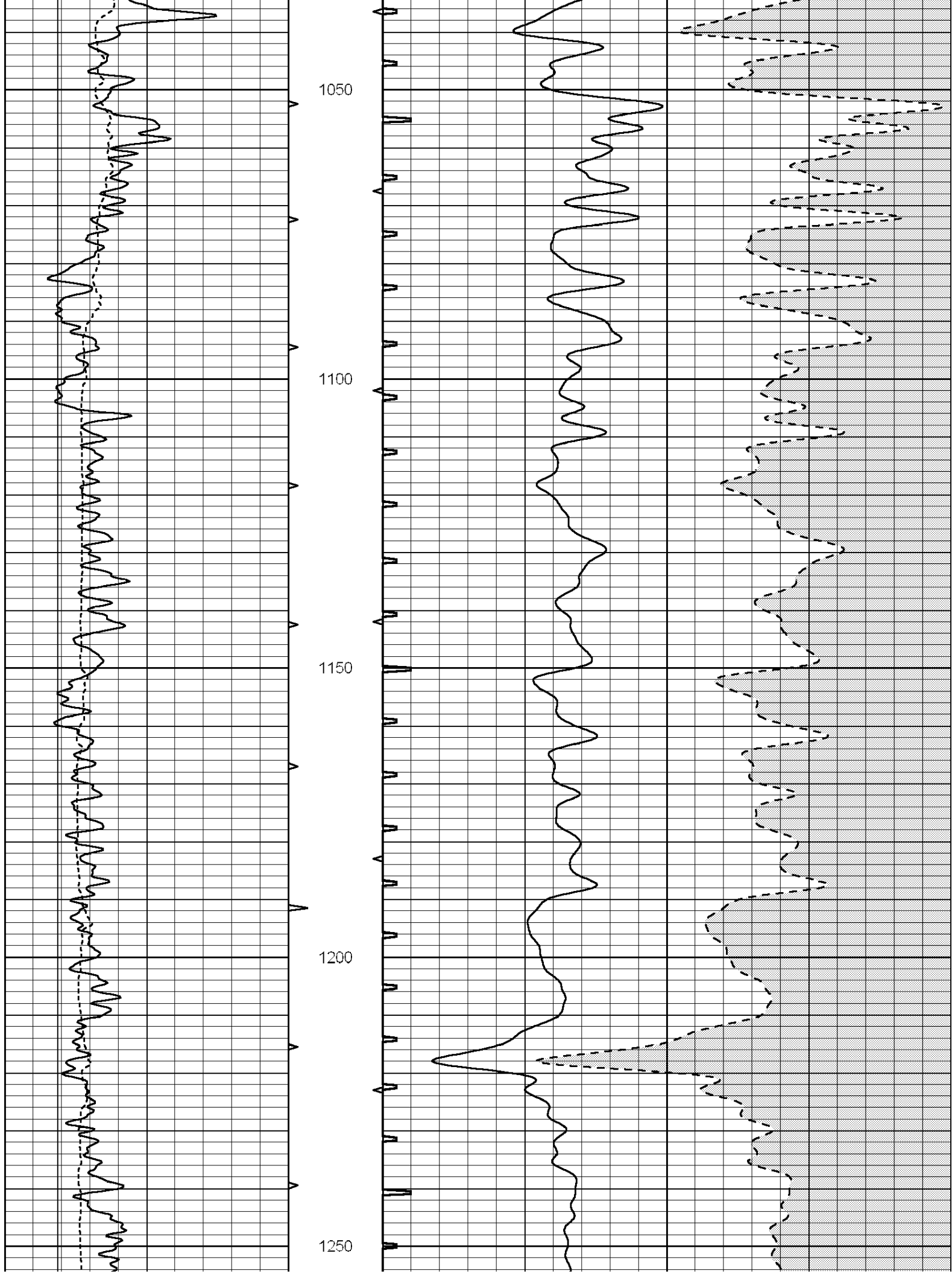
850

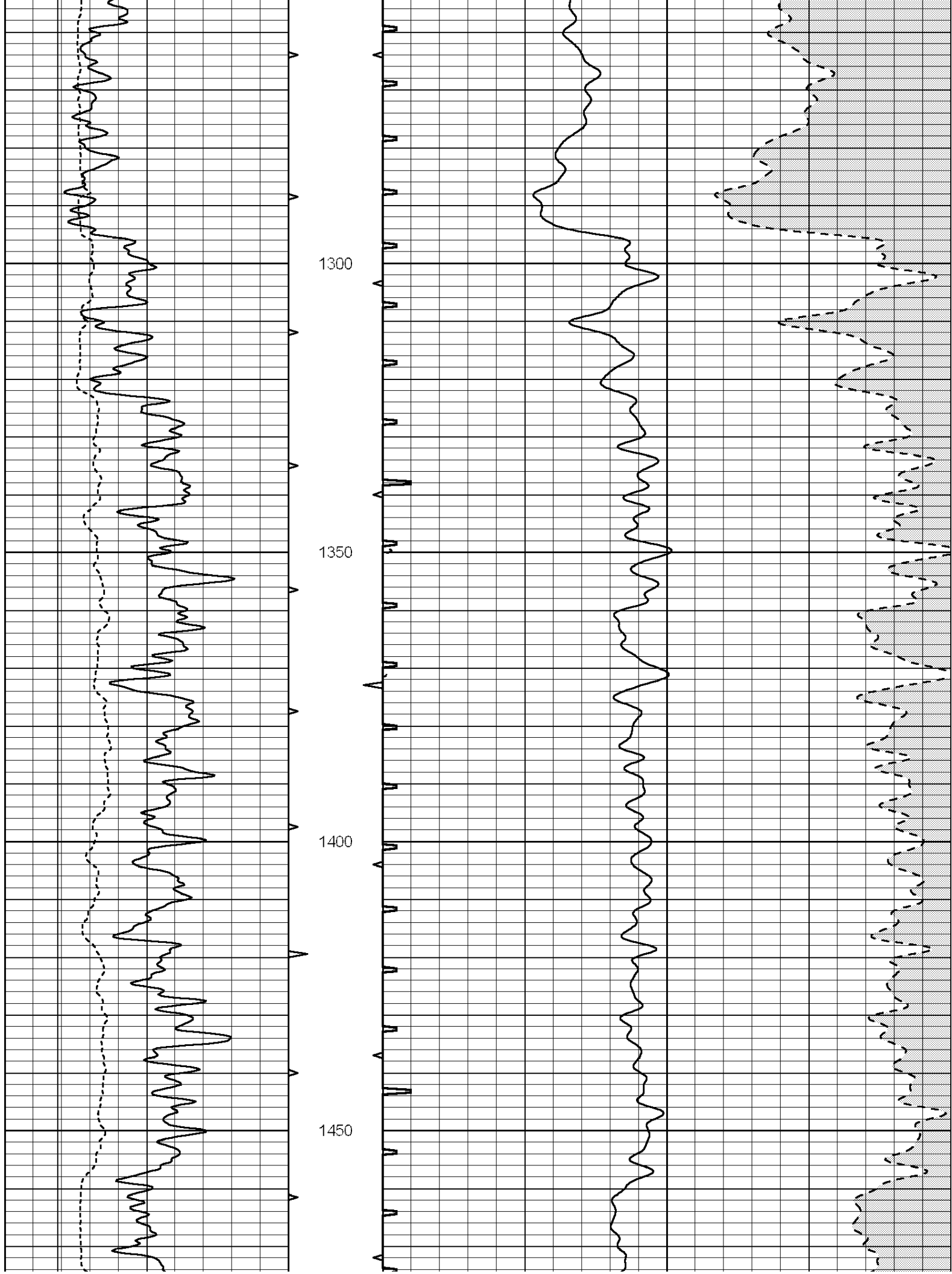
900

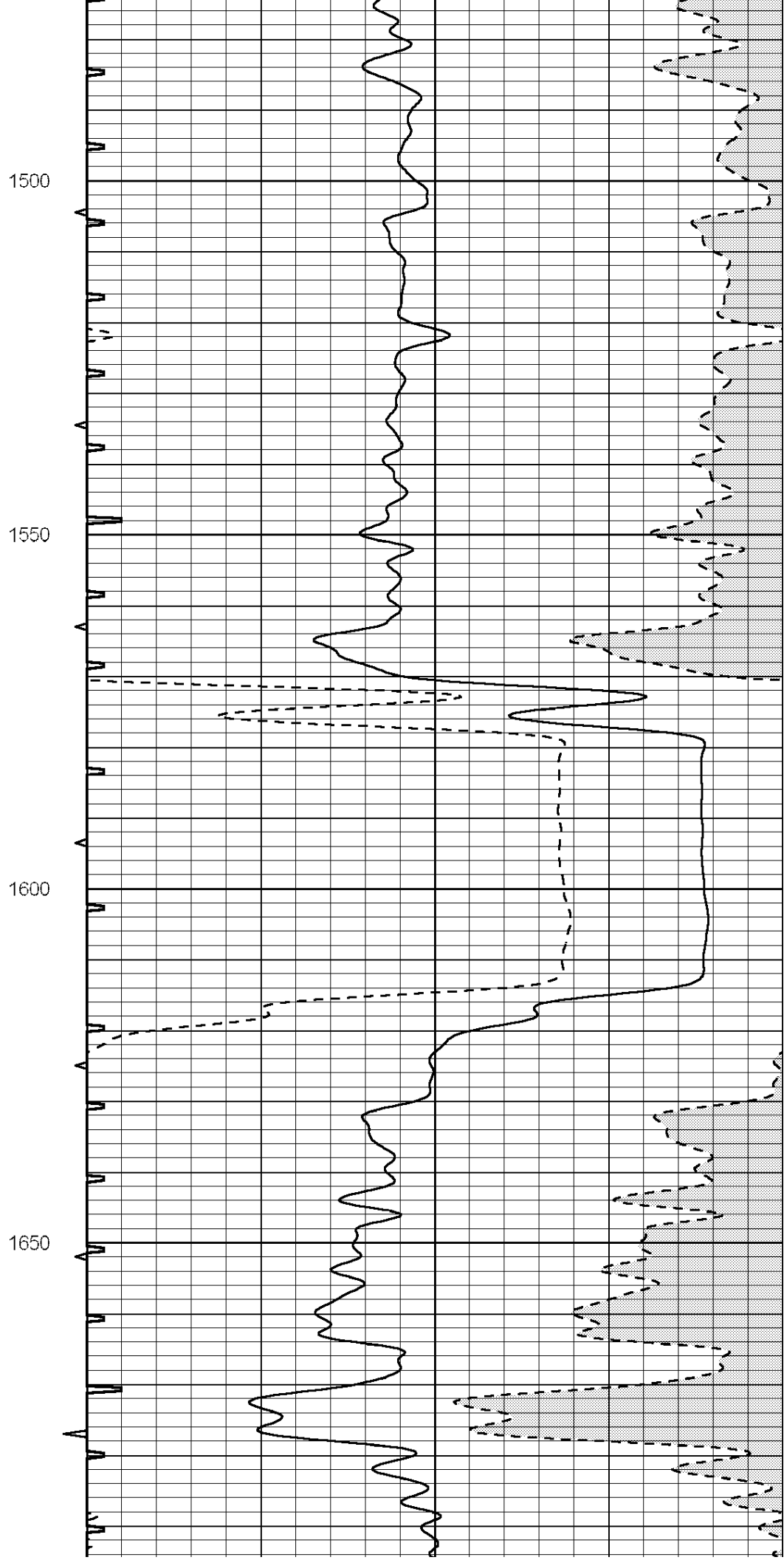
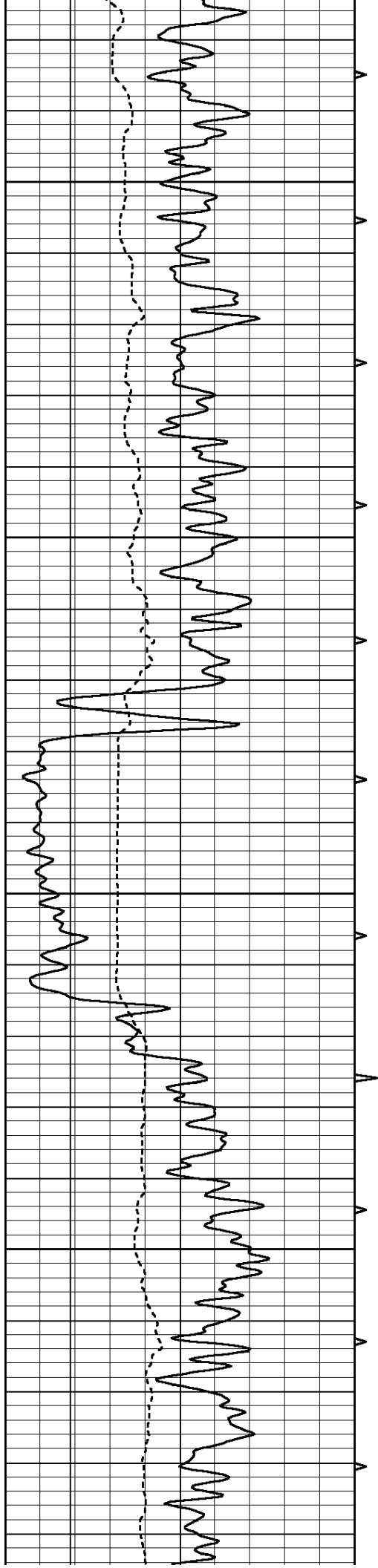
950

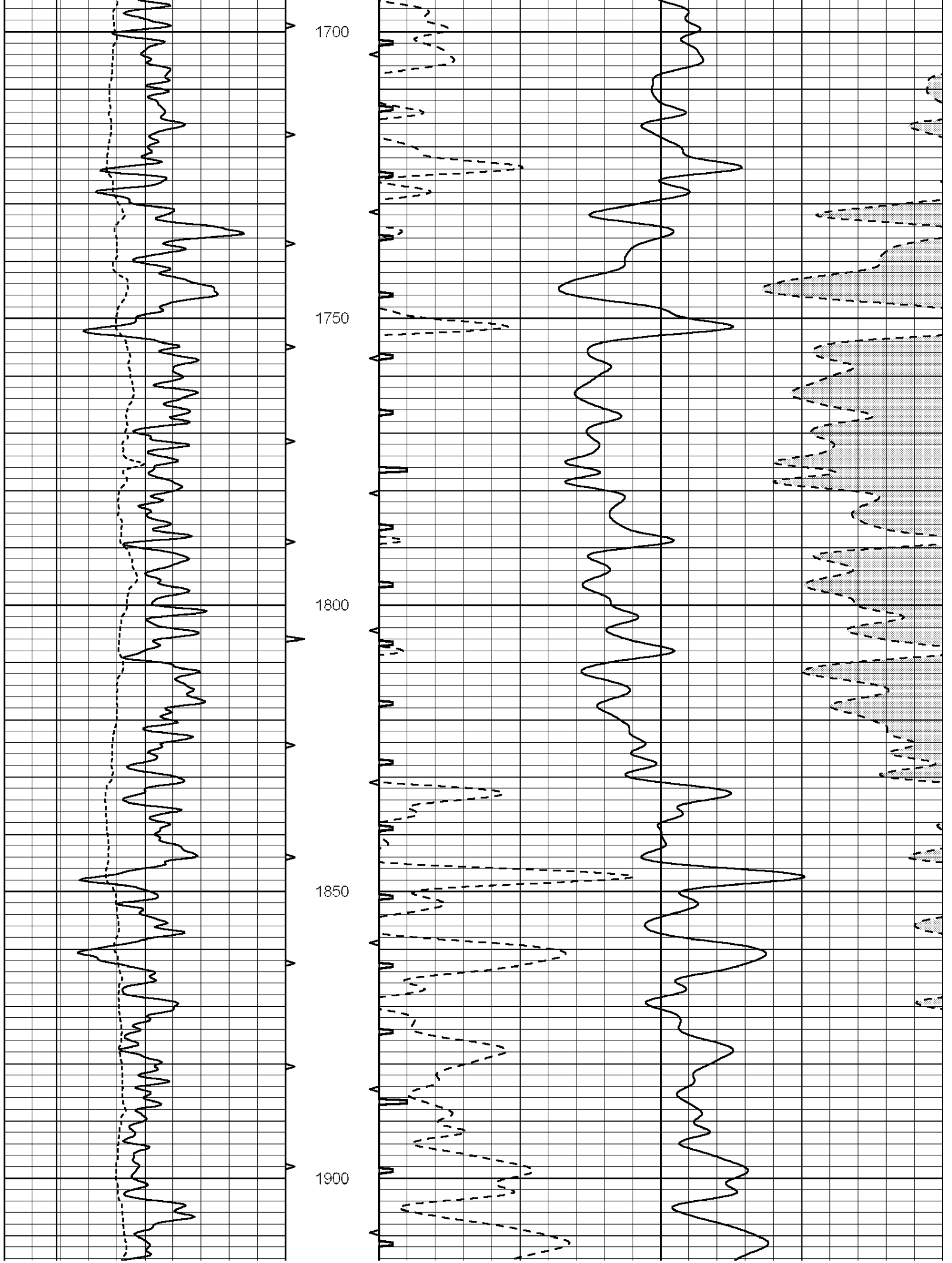
1000

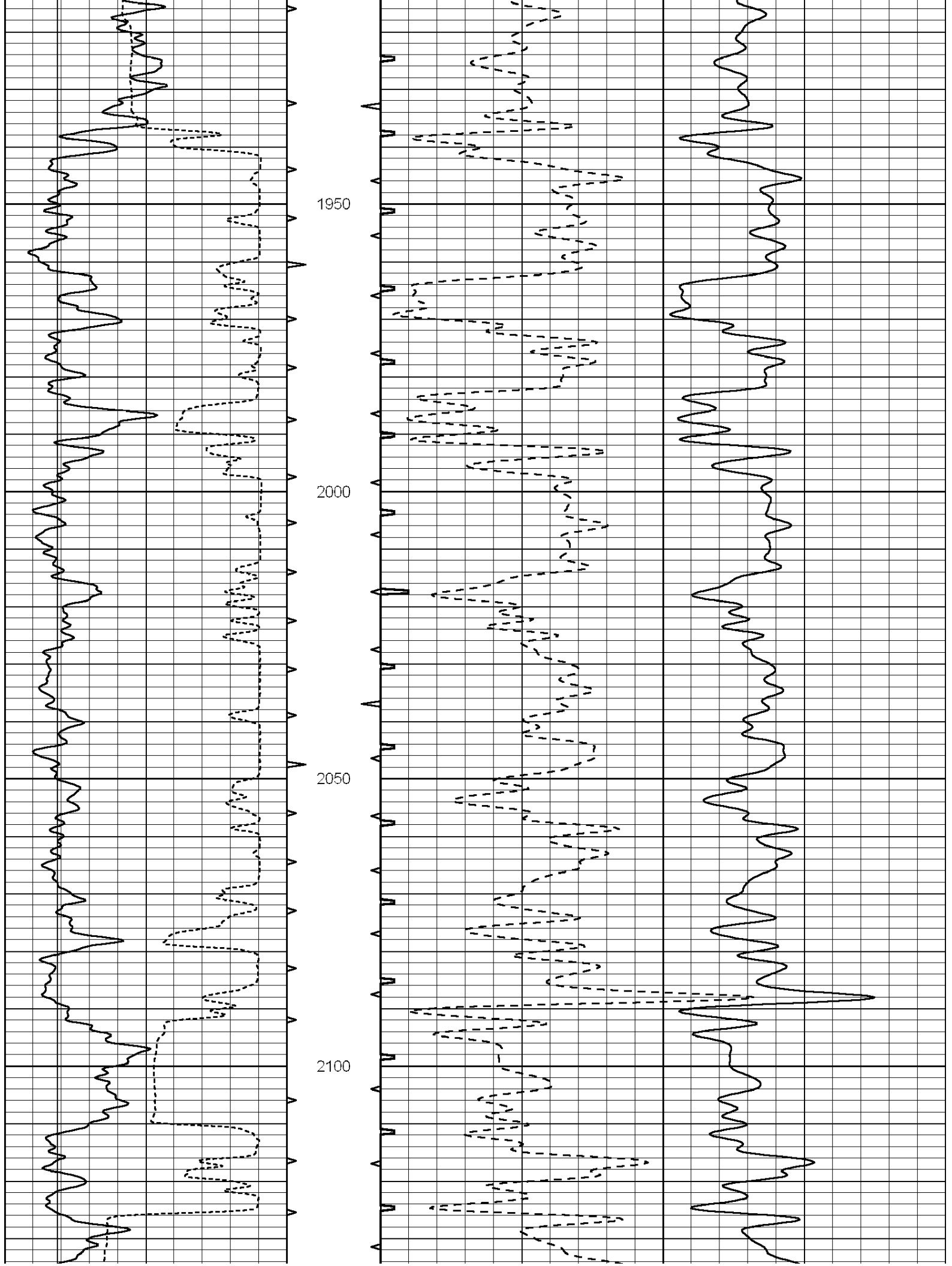


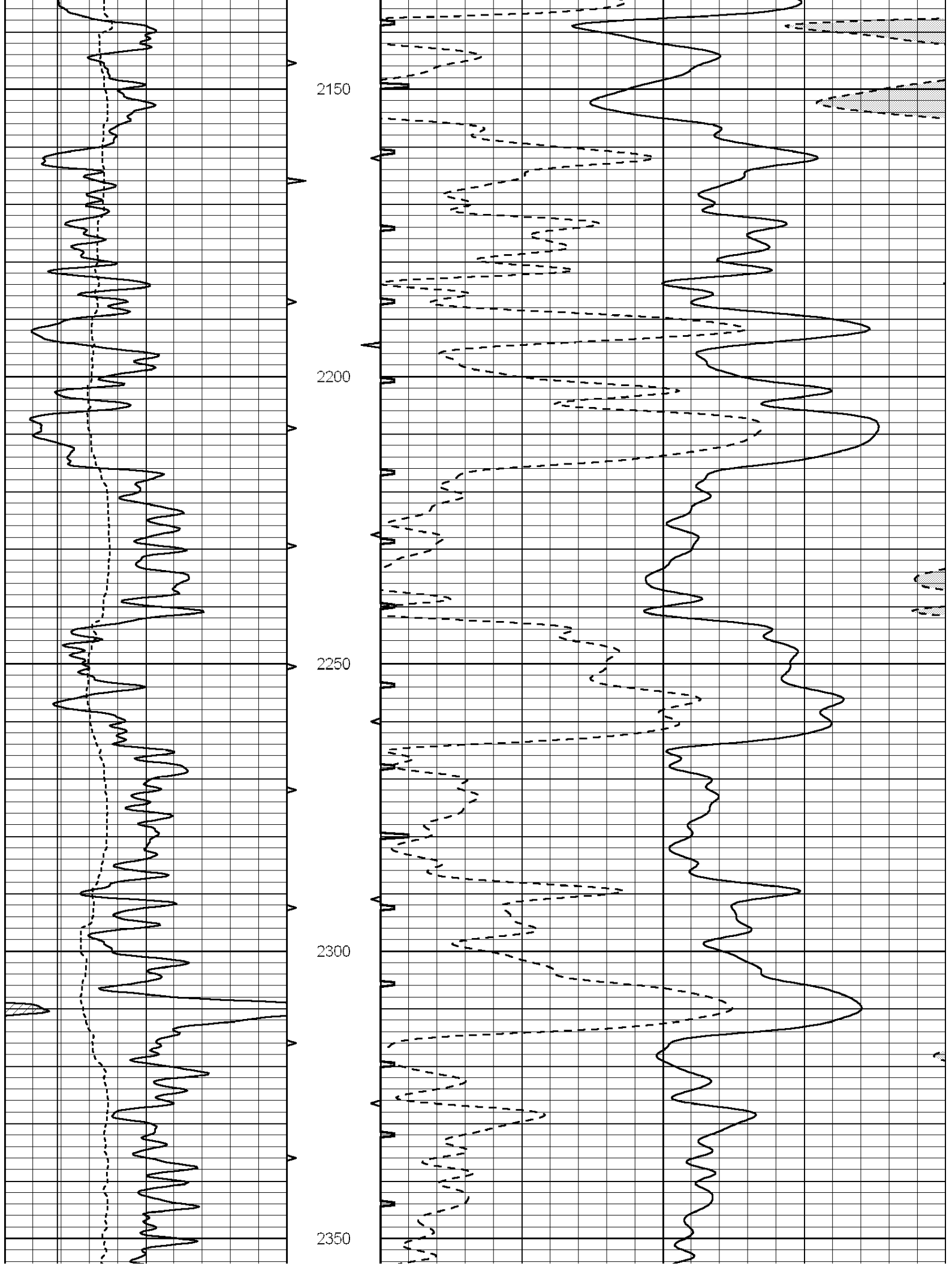


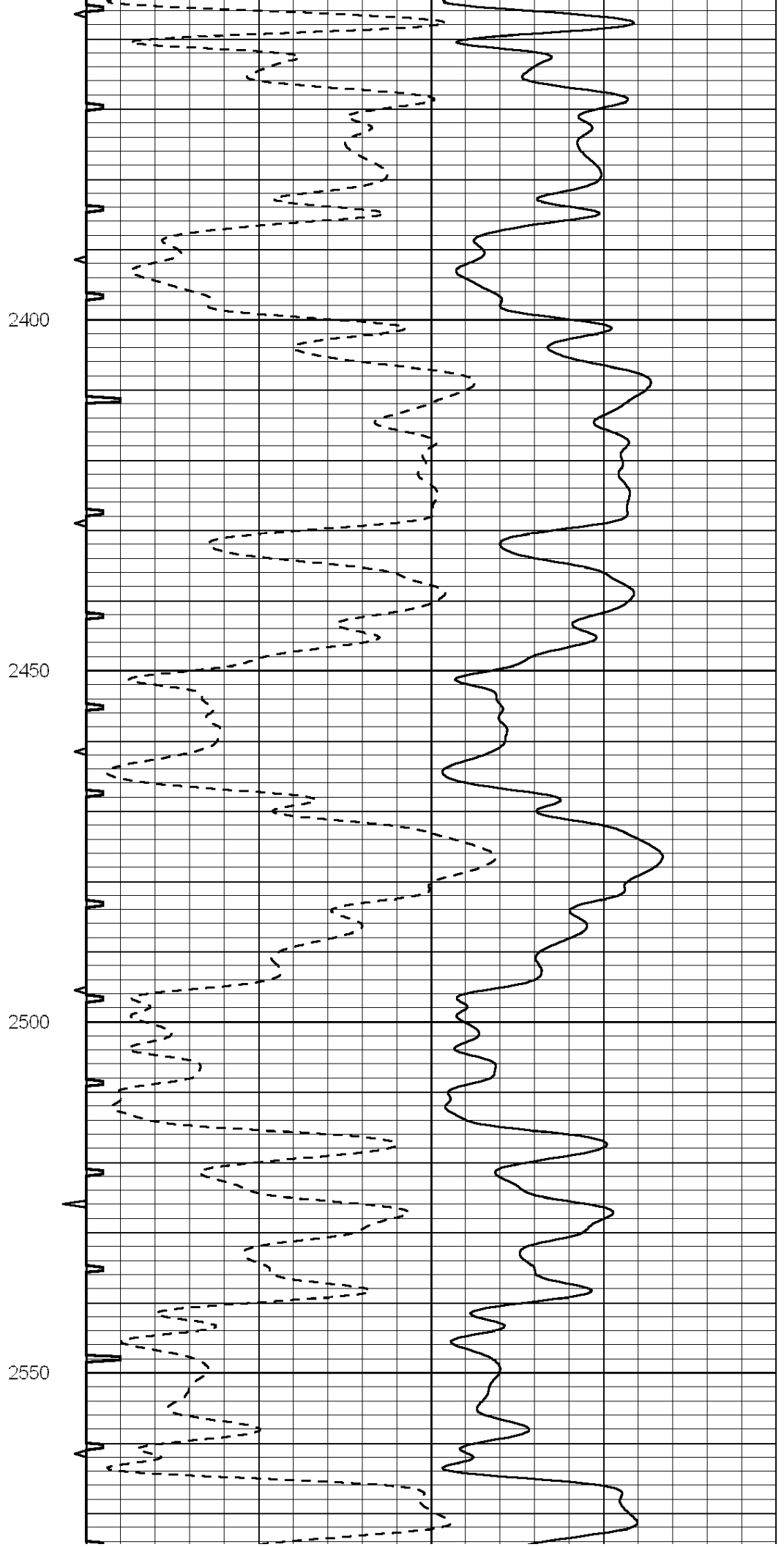
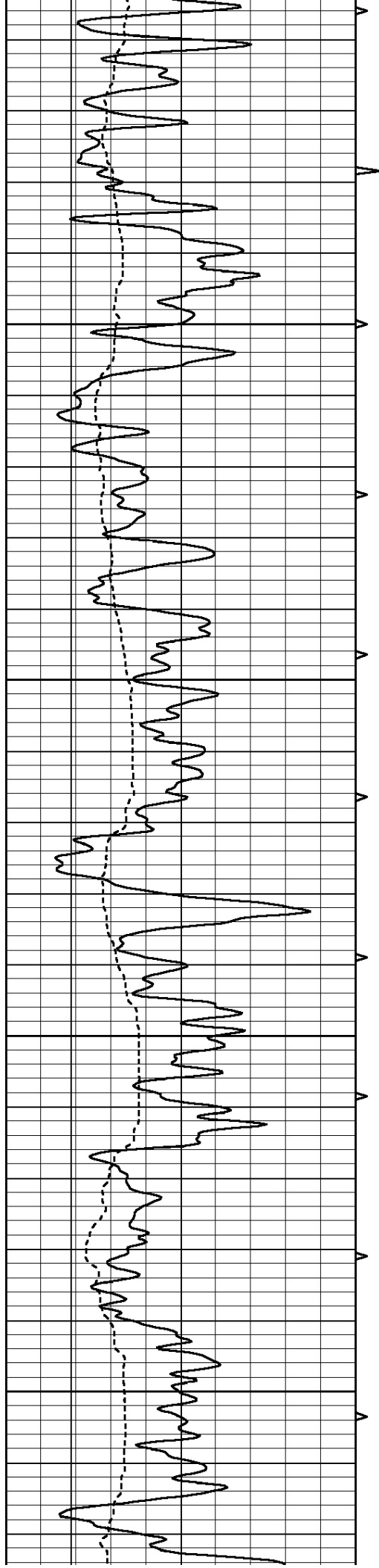


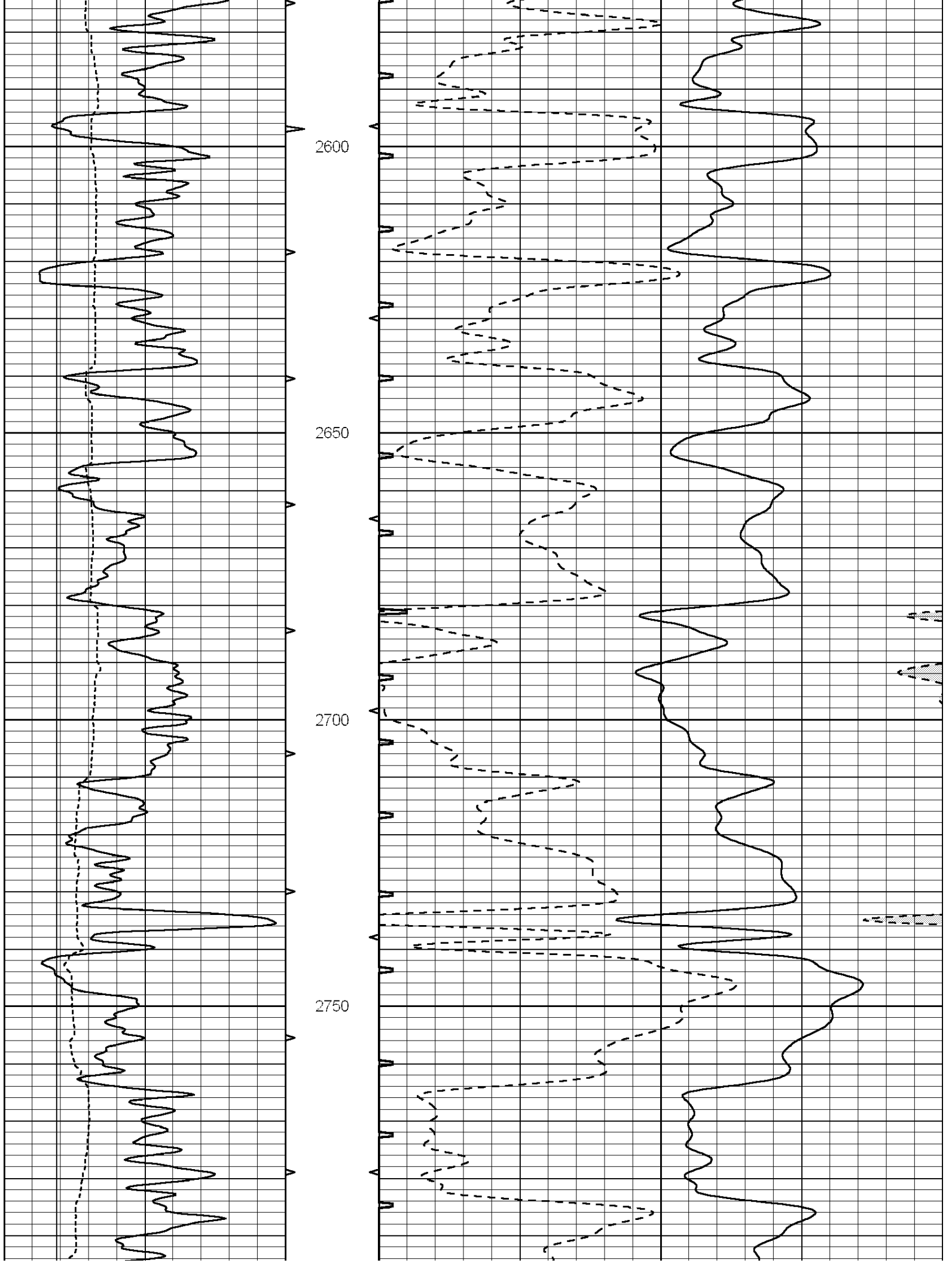


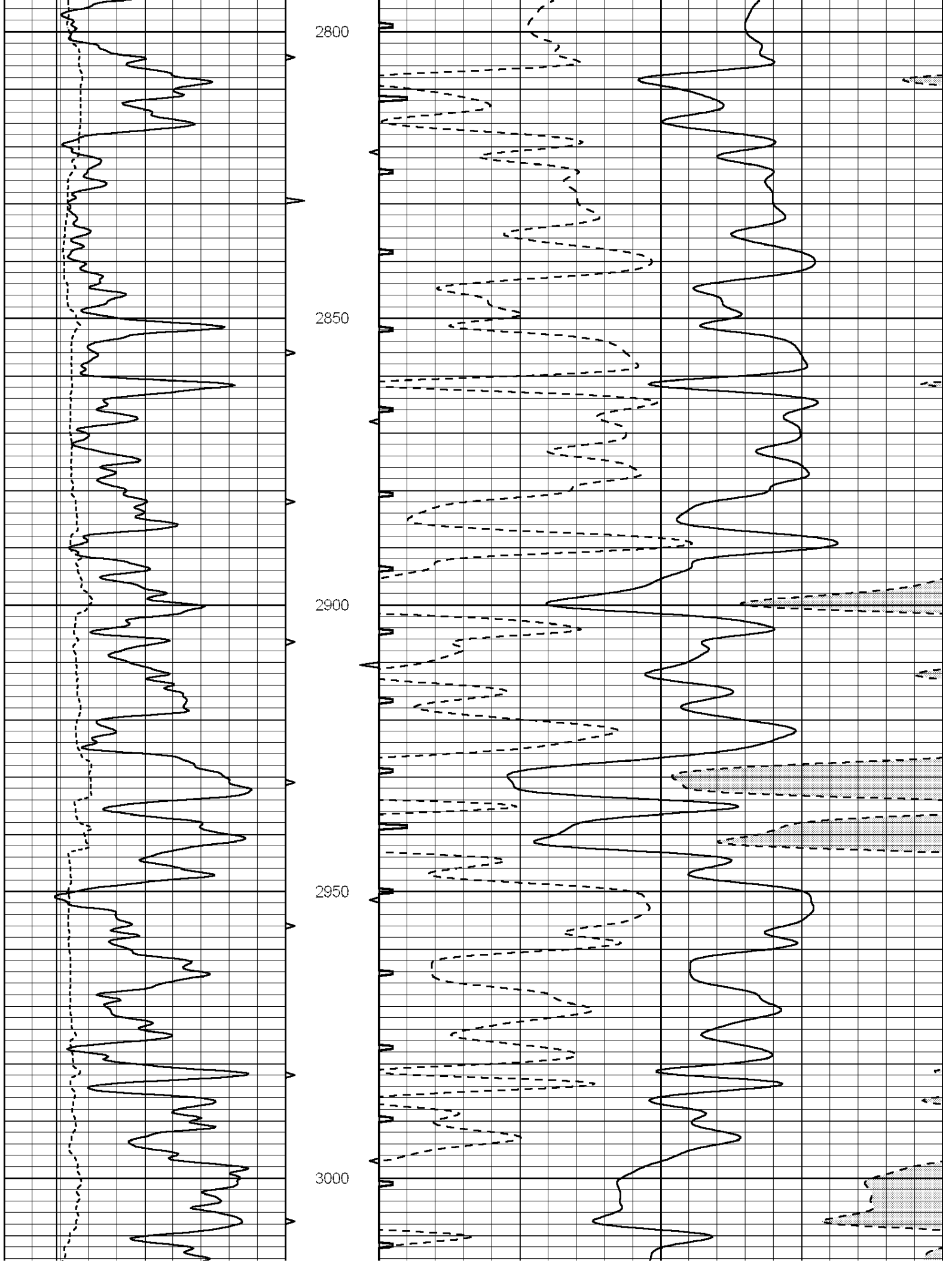


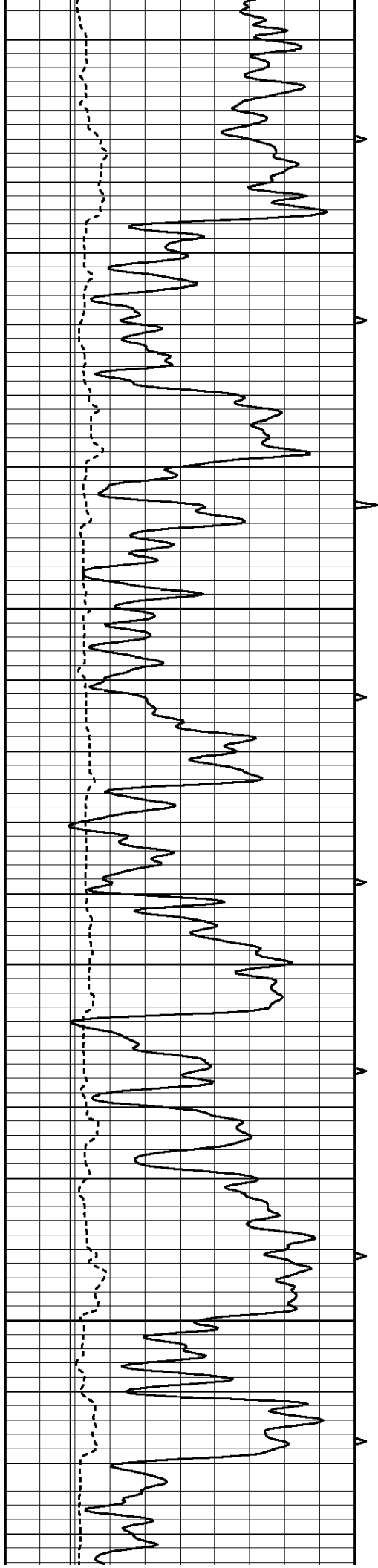










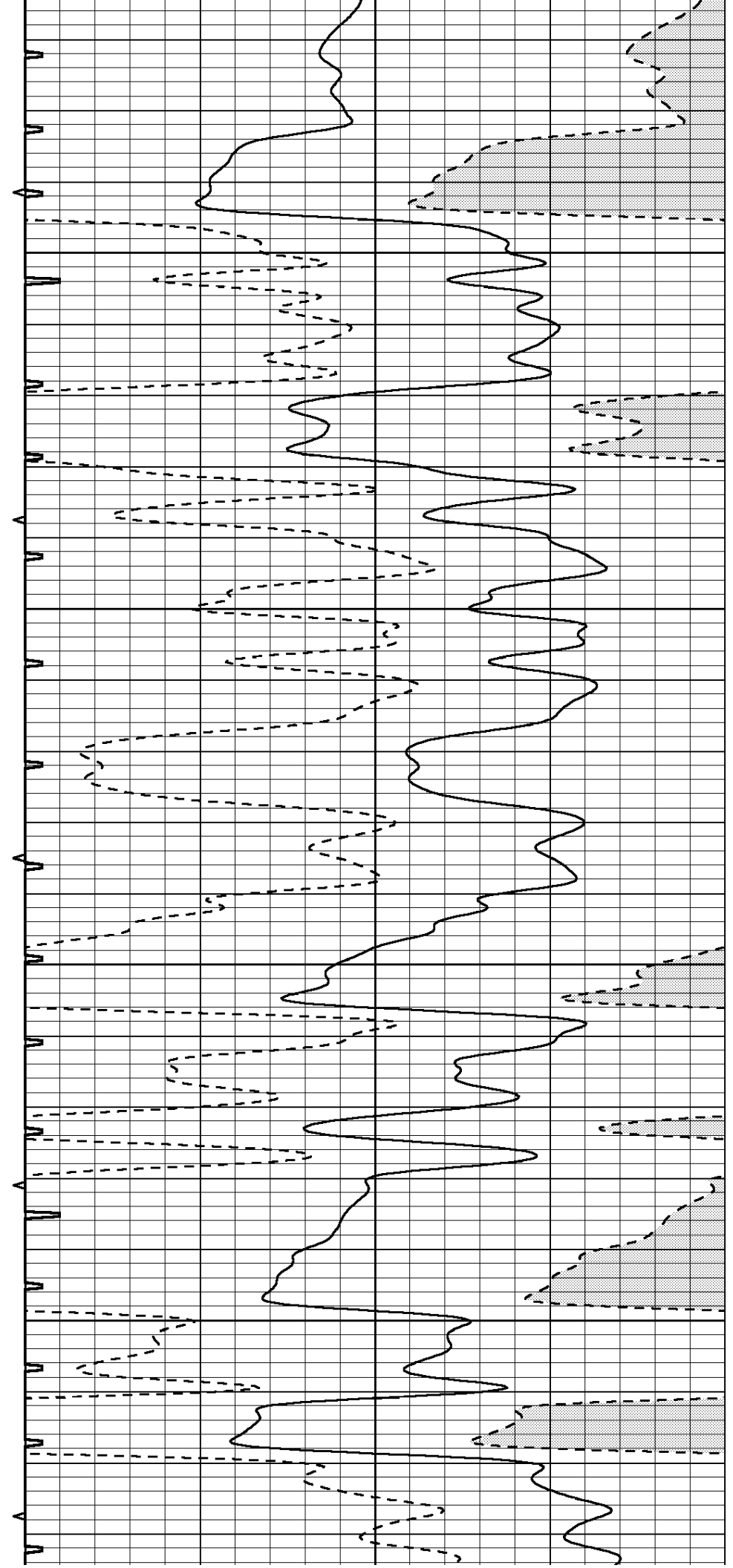


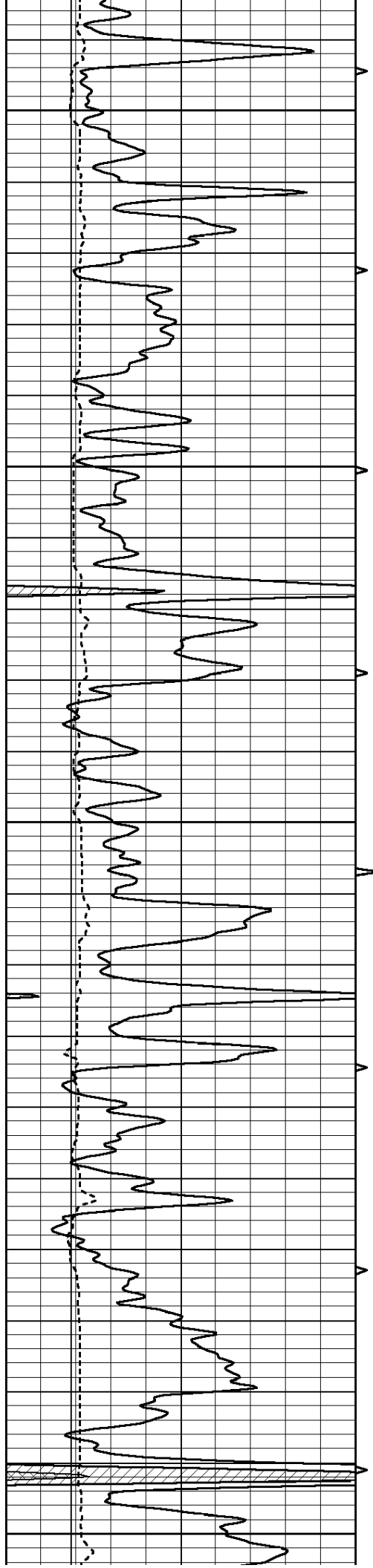
3050

3100

3150

3200





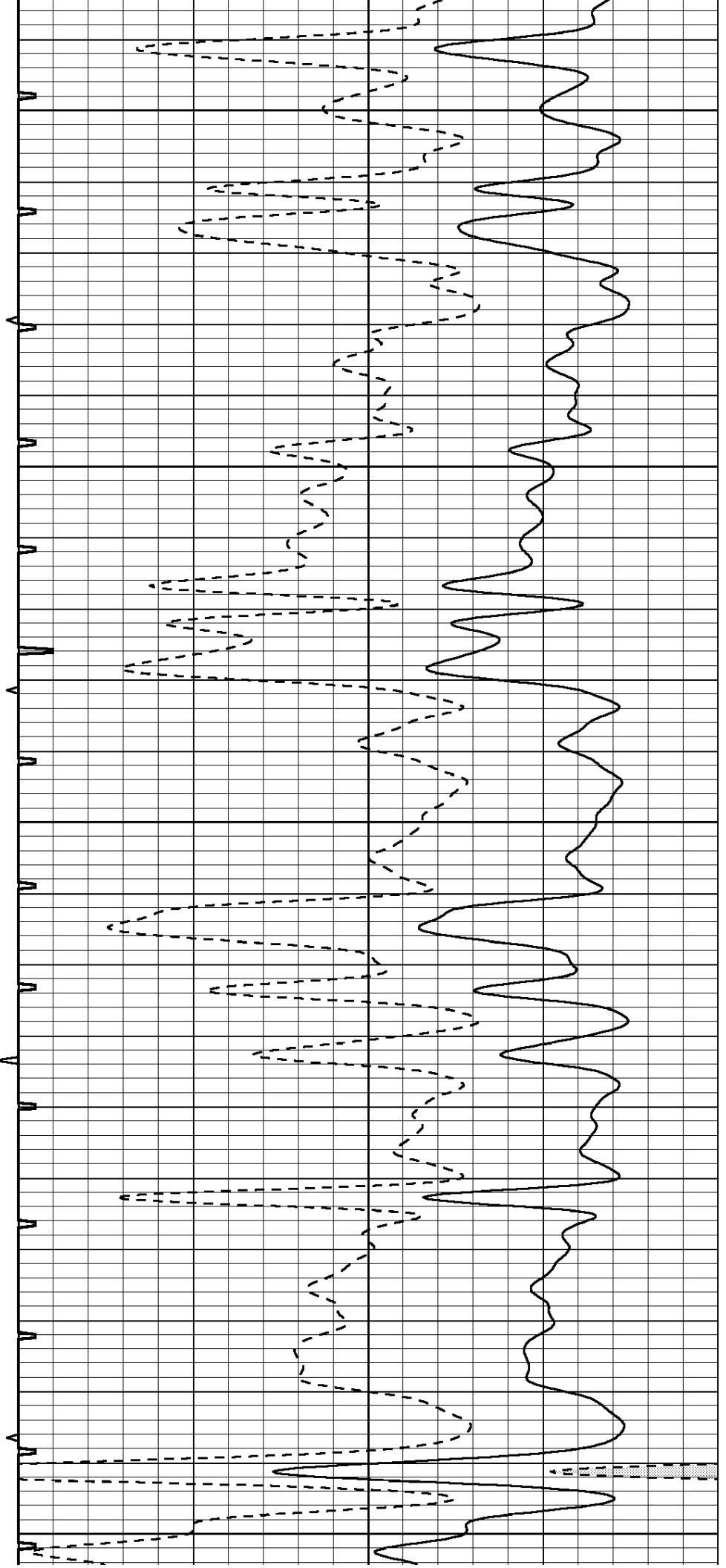
3250

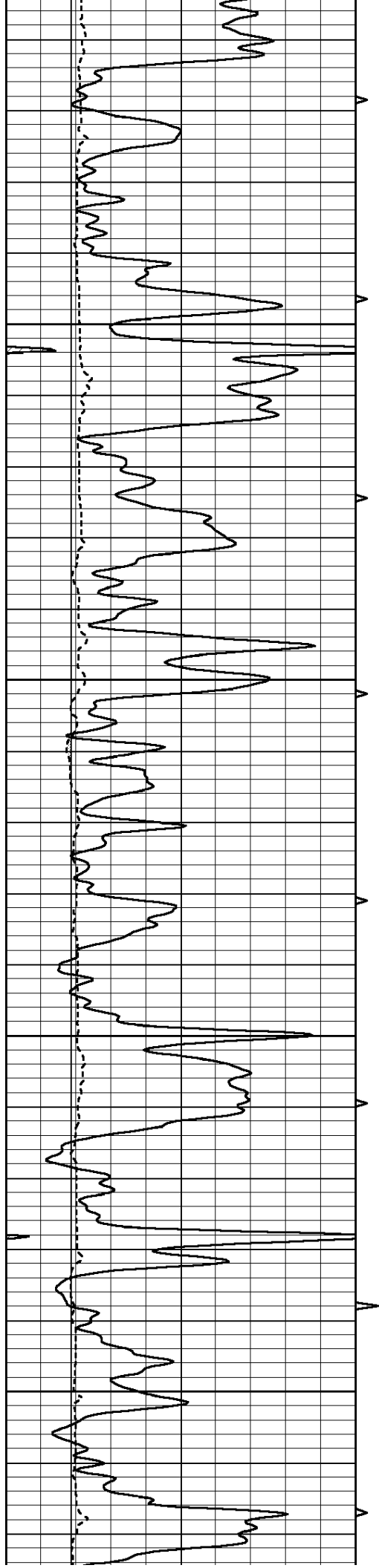
3300

3350

3400

3450



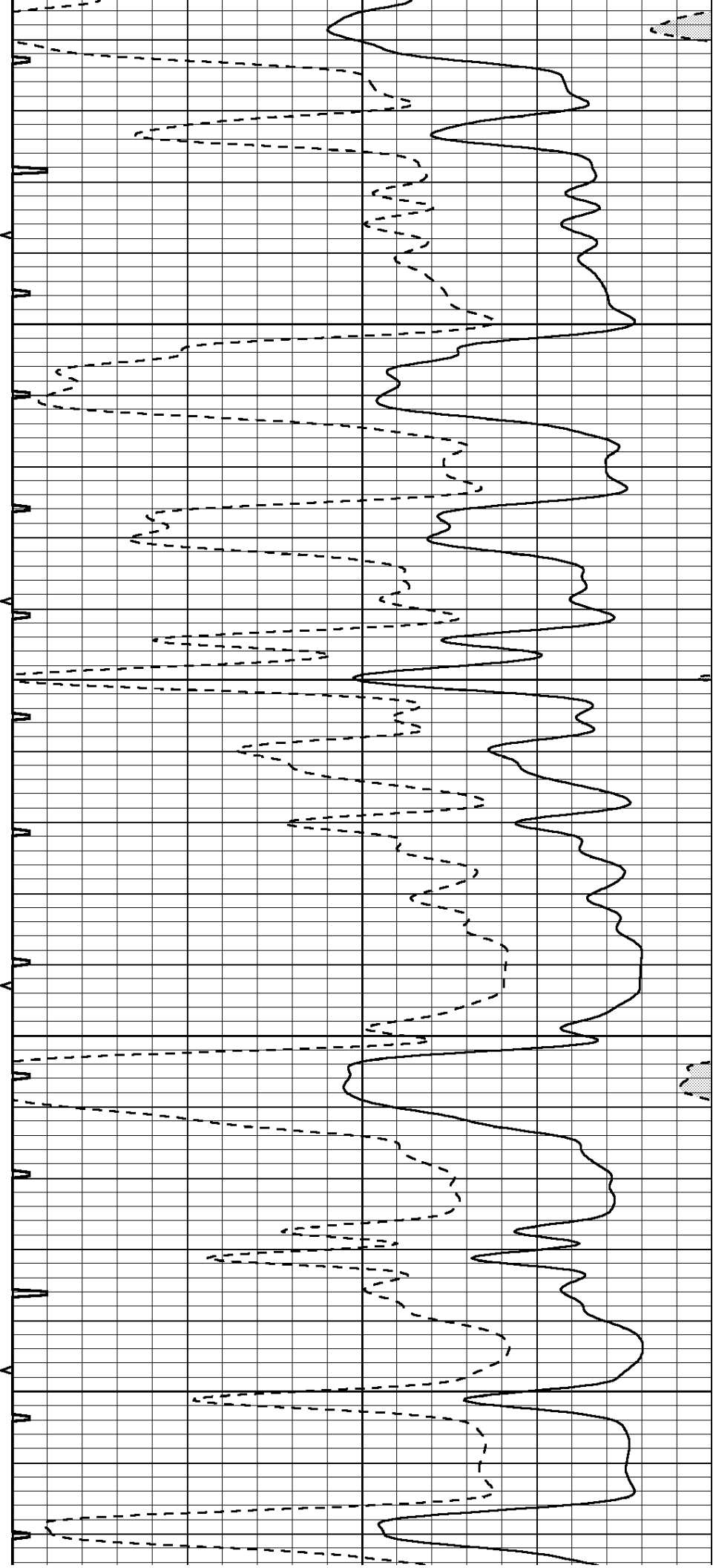


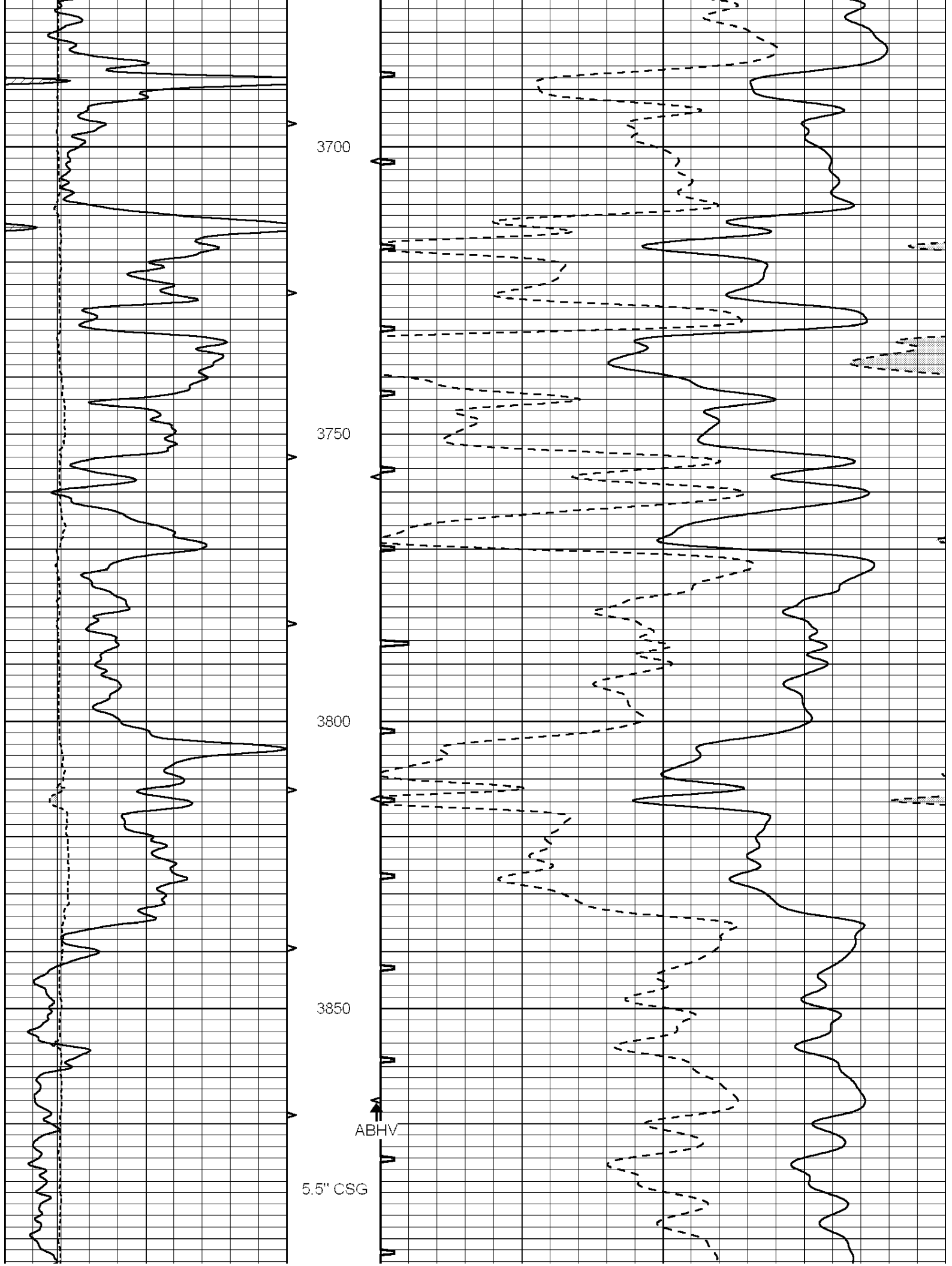
3500

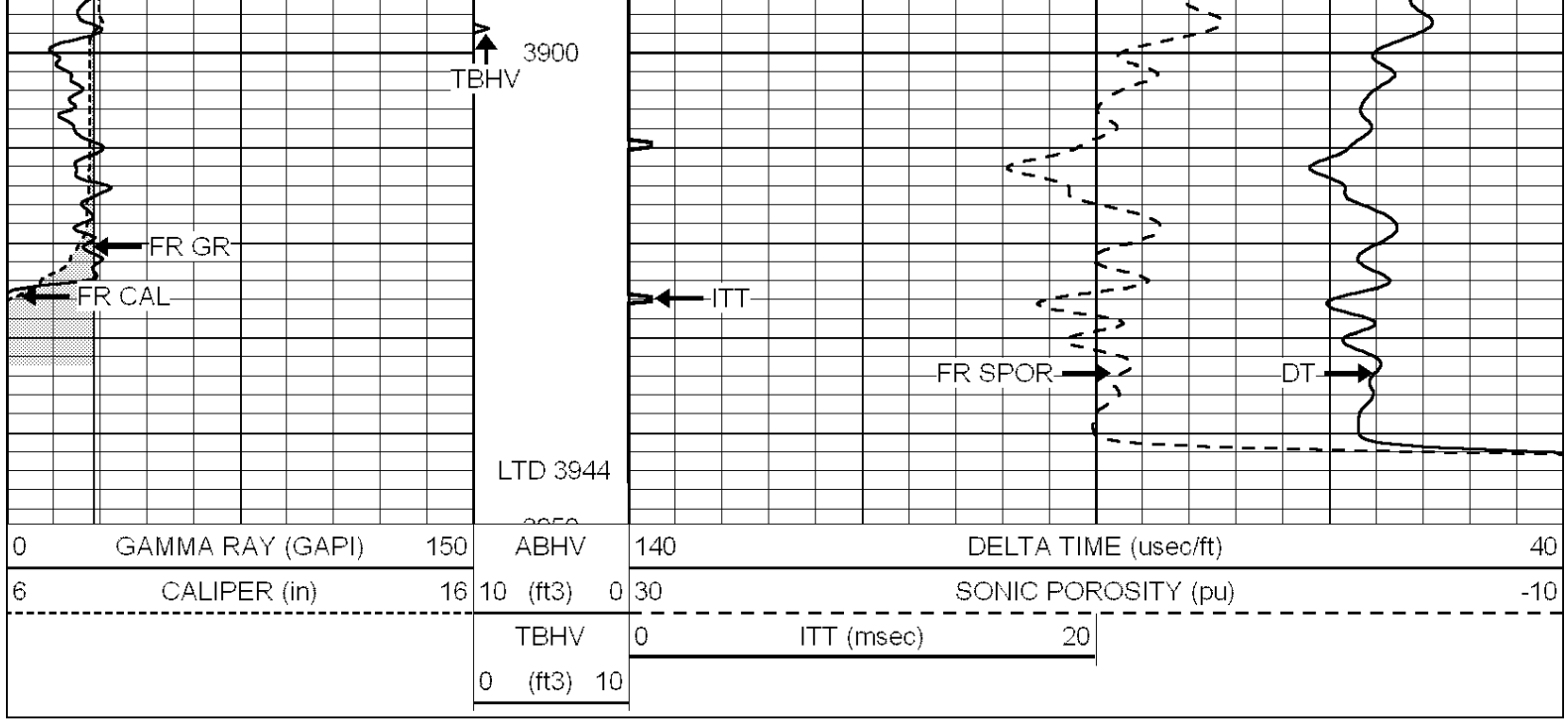
3550

3600

3650



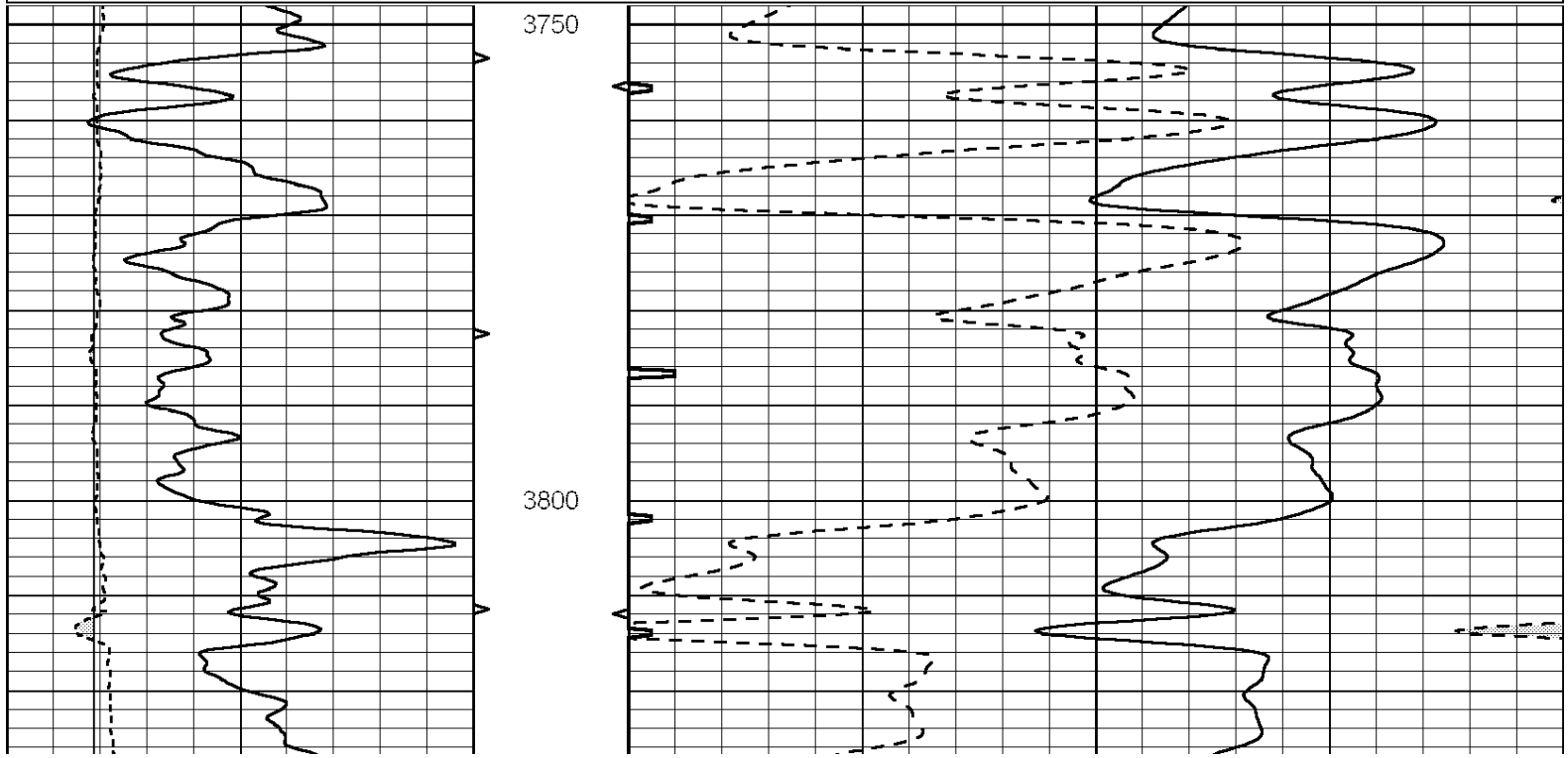
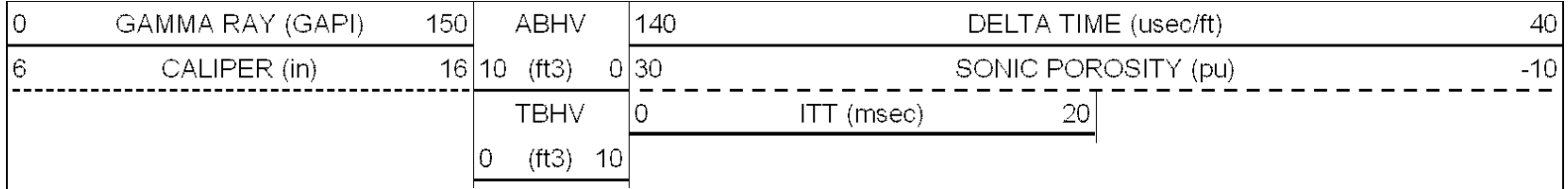


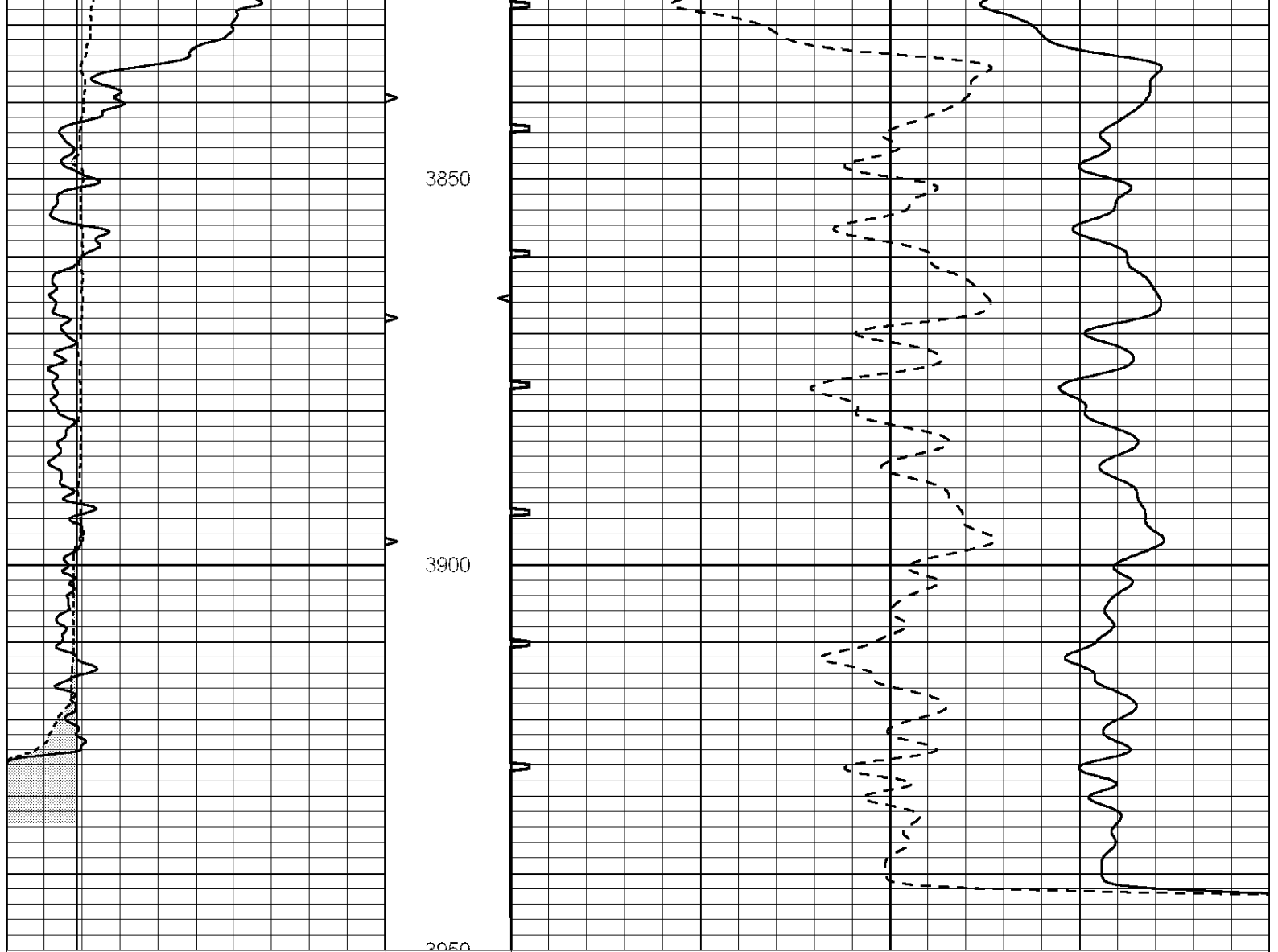


SUPERIOR
Hays,
Kansas

REPEAT SECTION

Database File: 007899ddn.db
 Dataset Pathname: pass5.1
 Presentation Format: _slt
 Dataset Creation: Thu Nov 03 12:14:01 2011 by Calc Open-Cased 090629
 Charted by: Depth in Feet scaled 1:240





0	GAMMA RAY (GAPI)	150	2050	ABHV	140	DELTA TIME (uSec/ft)	40
6	CALIPER (in)	16	10 (ft3)	0	30	SONIC POROSITY (pu)	-10
			TBHV	0	ITT (msec)	20	
			0 (ft3)	10			