



**SUPERIOR**  
Hays,  
Kansas

**MICRO  
LOG**

Company DOWNING NELSON OIL CO., INC.  
Well SEITZ-BARNHARDT "C" #1-34  
Field RIDGEWAY  
County TREGO  
State KANSAS

Company DOWNING NELSON OIL COMPANY, INC.  
Well SEITZ-BARNHARDT "C" #1-34  
Field RIDGEWAY  
County TREGO State KANSAS

Location: 330' FNL & 1700' FEL

API # : 15-195-22733-0000

Other Services  
CDL/CNL  
DIL/SON

SEC 34 TWP 12S RGE 21W

Permanent Datum GROUND LEVEL Elevation 2191  
Log Measured From KELLY BUSHING 8' A.G.L.  
Drilling Measured From KELLY BUSHING

Elevation  
K.B. 2199  
D.F. 2197  
G.L. 2191

|                              |                   |                    |  |
|------------------------------|-------------------|--------------------|--|
| Date                         | 11/3/11           |                    |  |
| Run Number                   | TWO               |                    |  |
| Depth Driller                | 3940              |                    |  |
| Depth Logger                 | 3944              |                    |  |
| Bottom Logged Interval       | 3926              |                    |  |
| Top Log Interval             | 3150              |                    |  |
| Casing Driller               | 8 5/8" @ 221      |                    |  |
| Casing Logger                | 221               |                    |  |
| Bit Size                     | 7 7/8             |                    |  |
| Type Fluid in Hole           | CHEMICAL MUD      | CHLORIDES 5000 PPM |  |
| Density / Viscosity          | 9.0/56            |                    |  |
| pH / Fluid Loss              | 9.5/8.0           |                    |  |
| Source of Sample             | FLOWLINE          |                    |  |
| Rin @ Meas. Temp             | .80 @ 58F         |                    |  |
| Rmf @ Meas. Temp             | .60 @ 58F         |                    |  |
| Rmc @ Meas. Temp             | .96 @ 58F         |                    |  |
| Source of Rmf / Rmc          | MEASURED          |                    |  |
| Rin @ BHT                    | .38 @ 116F        |                    |  |
| Time Circulation Stopped     | 2 HOURS           |                    |  |
| Time Logger on Bottom        |                   |                    |  |
| Maximum Recorded Temperature | 116F              |                    |  |
| Equipment Number             | 680               |                    |  |
| Location                     | HAYS, KS.         |                    |  |
| Recorded By                  | JASON CAPPELLUCCI |                    |  |
| Witnessed By                 | MARC DOWNING      |                    |  |

<<< Fold Here >>>

All interpretations are opinions based on inferences from electrical or other measurements and we cannot and do not guarantee the accuracy or correctness of any interpretation, and we shall not, except in the case of gross or willful negligence on our part, be liable or responsible for any loss, costs, damages, or expenses incurred or sustained by anyone resulting from any interpretation made by any of our officers, agents or employees. These interpretations are also subject to our general terms and conditions set out in our current Price Schedule.

Comments

THANK YOU FOR USING SUPERIOR WELL SERVICE (785) 628-6395  
DIRECTIONS  
I-70 & RIGA EXIT - 3/4 MILES N. TO RD. L - 3/4 E. - S. INTO

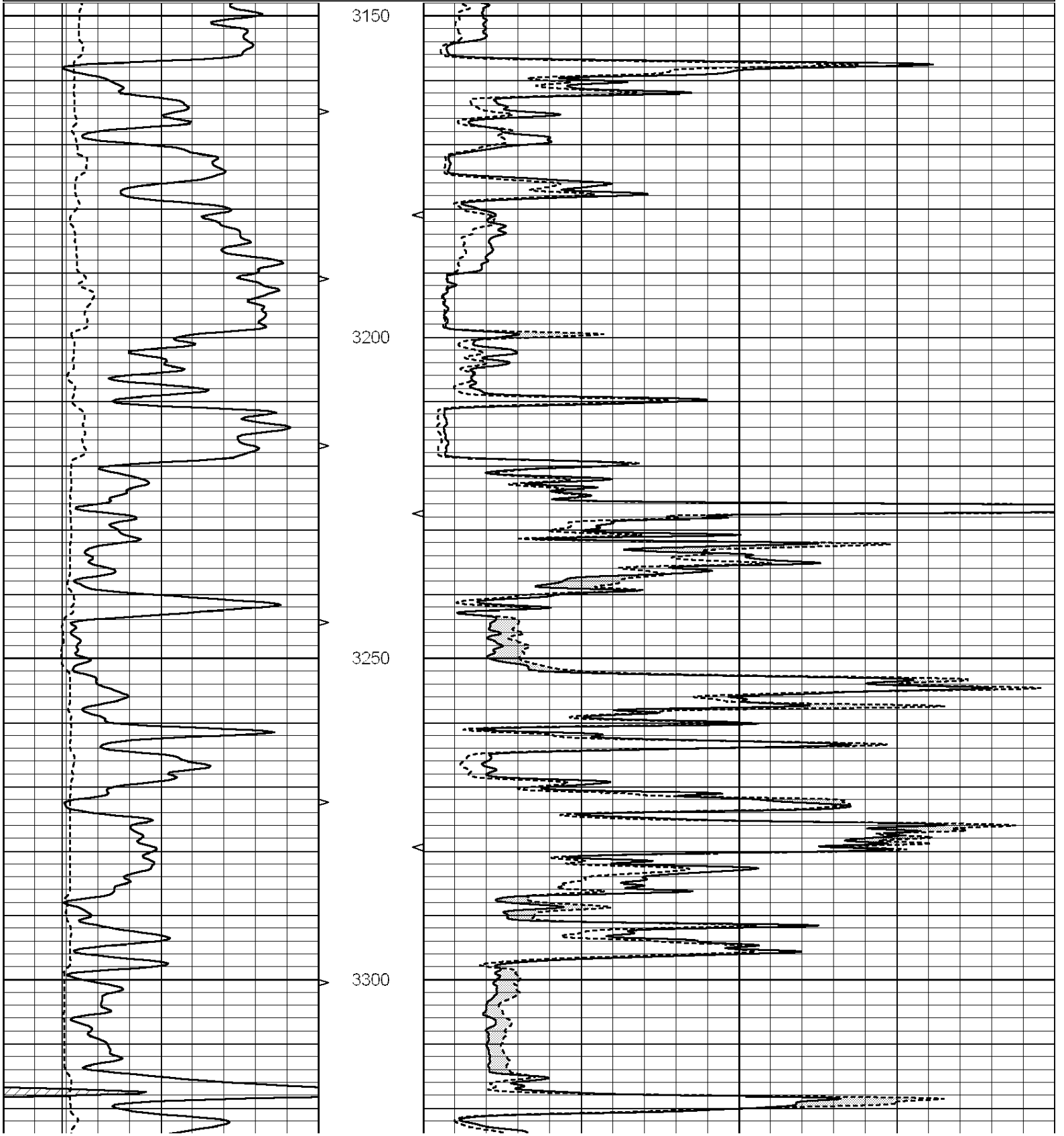


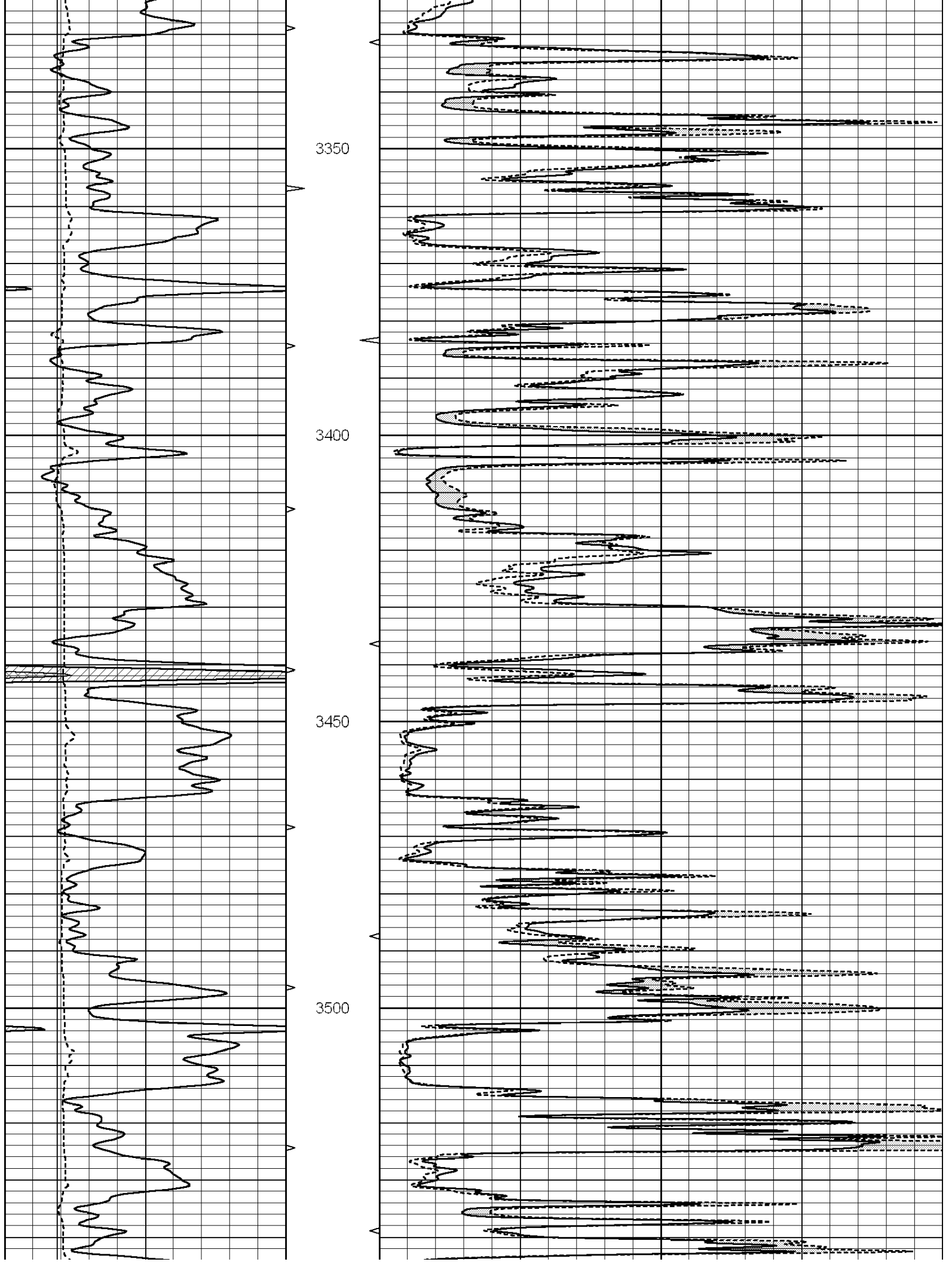
SUPERIOR  
Hays,  
Kansas

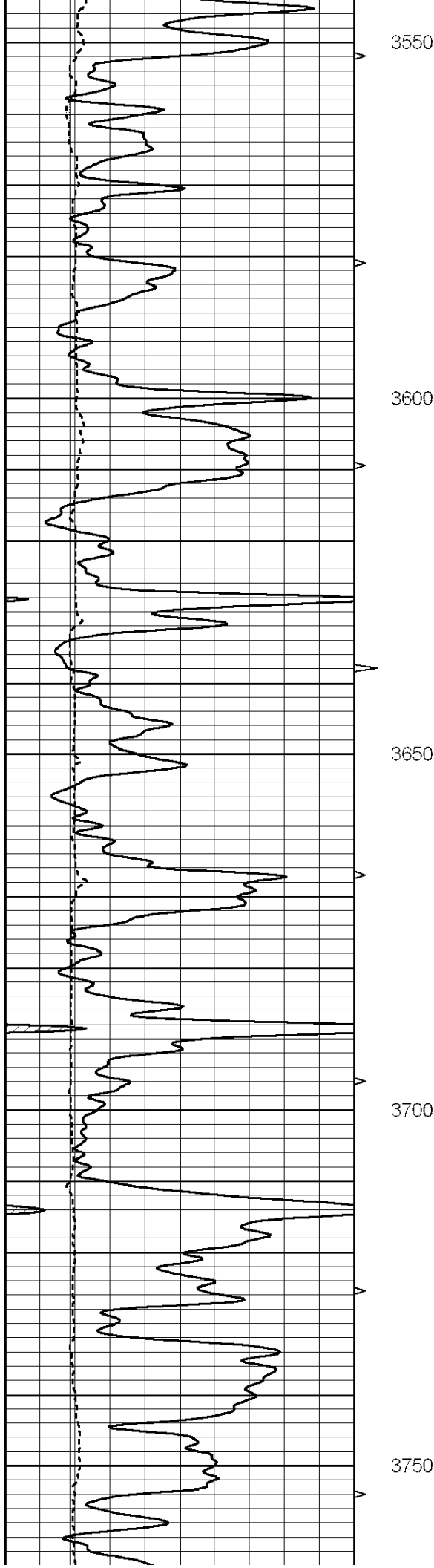
**MAIN SECTION**

Database File: 007899ddn.db  
 Dataset Pathname: pass6.1  
 Presentation Format: \_micro  
 Dataset Creation: Thu Nov 03 12:25:51 2011 by Calc Open-Cased 090629  
 Charted by: Depth in Feet scaled 1:240

|   |                  |     |          |    |                |    |
|---|------------------|-----|----------|----|----------------|----|
| 0 | GAMMA RAY (GAPI) | 150 | ABHV     | 0  | MEL1.5 (Ohm-m) | 40 |
| 6 | CALIPER (in)     | 16  | 10 (ft3) | 0  | MEL2.0 (Ohm-m) | 40 |
|   |                  |     | TBHV     |    |                |    |
|   |                  |     | 0 (ft3)  | 10 |                |    |







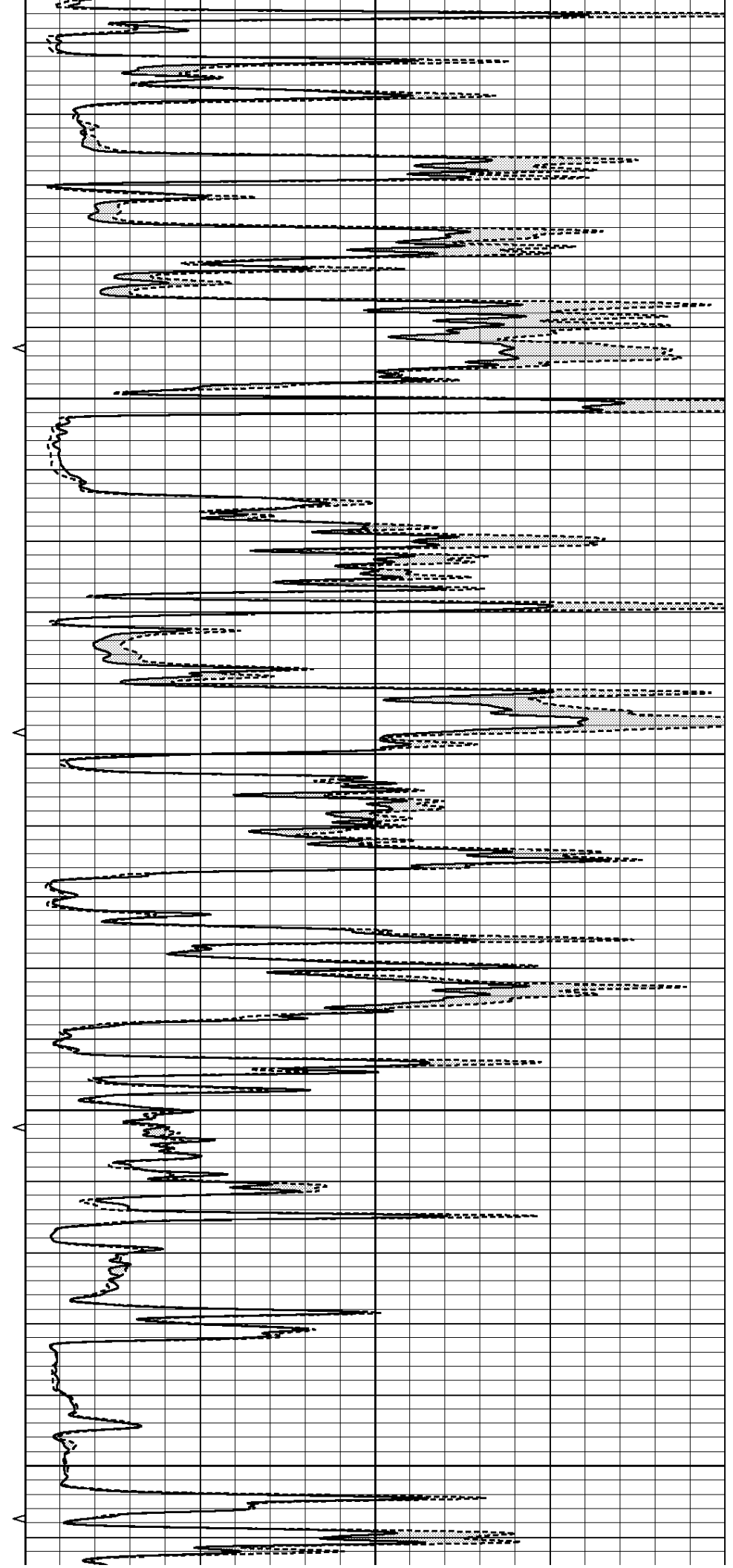
3550

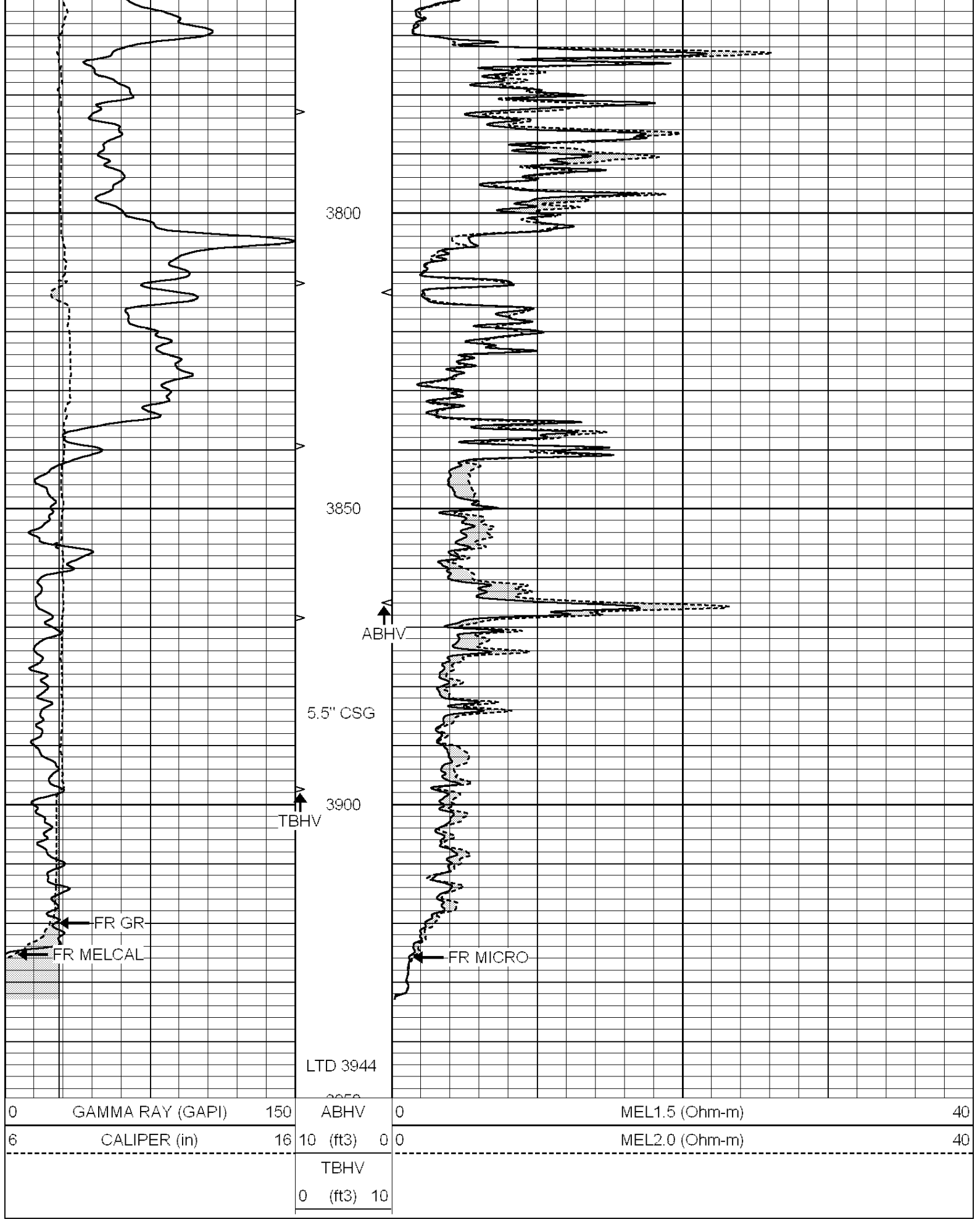
3600

3650

3700

3750





SUPERIOR

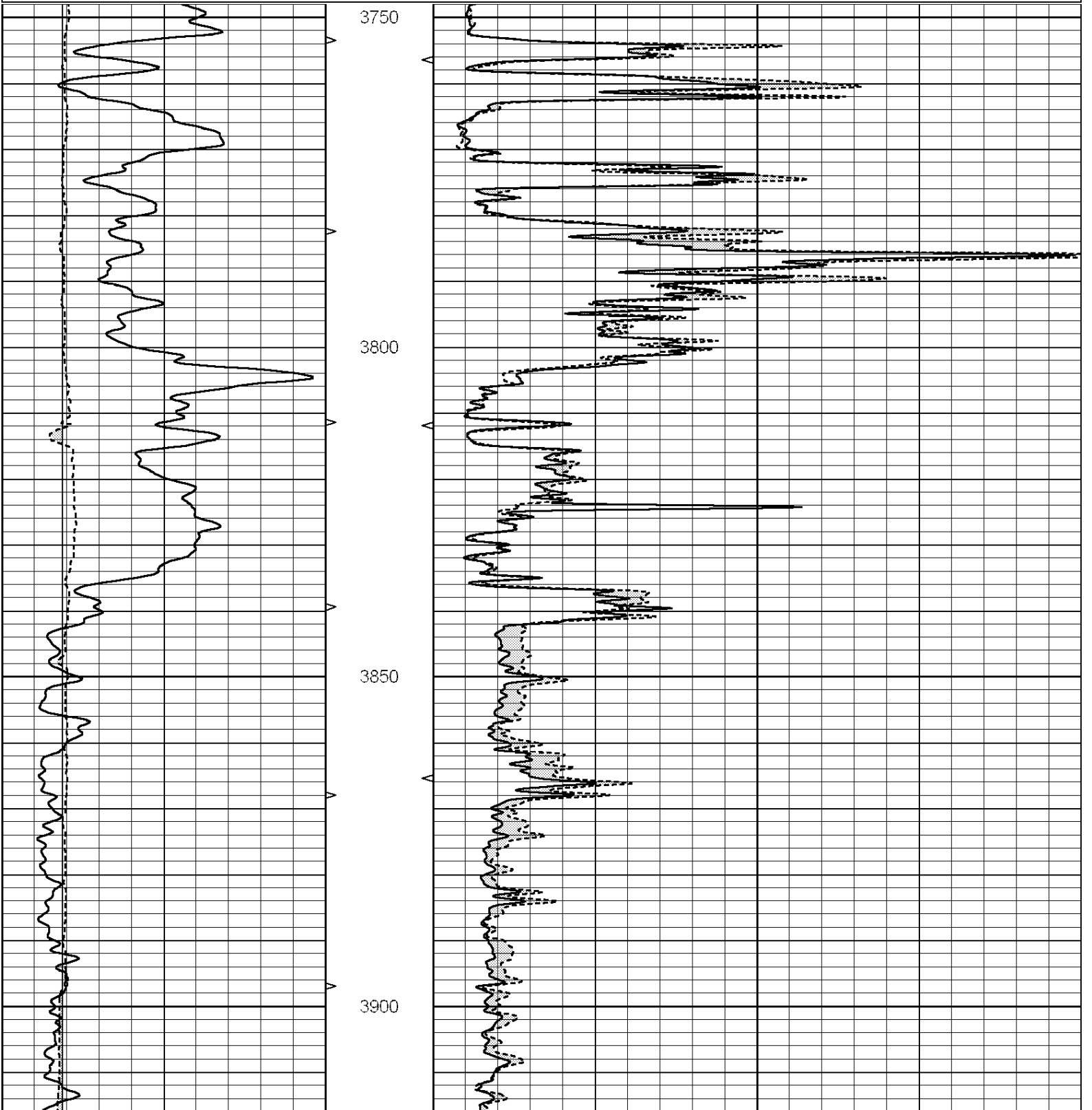
REPEAT SECTION

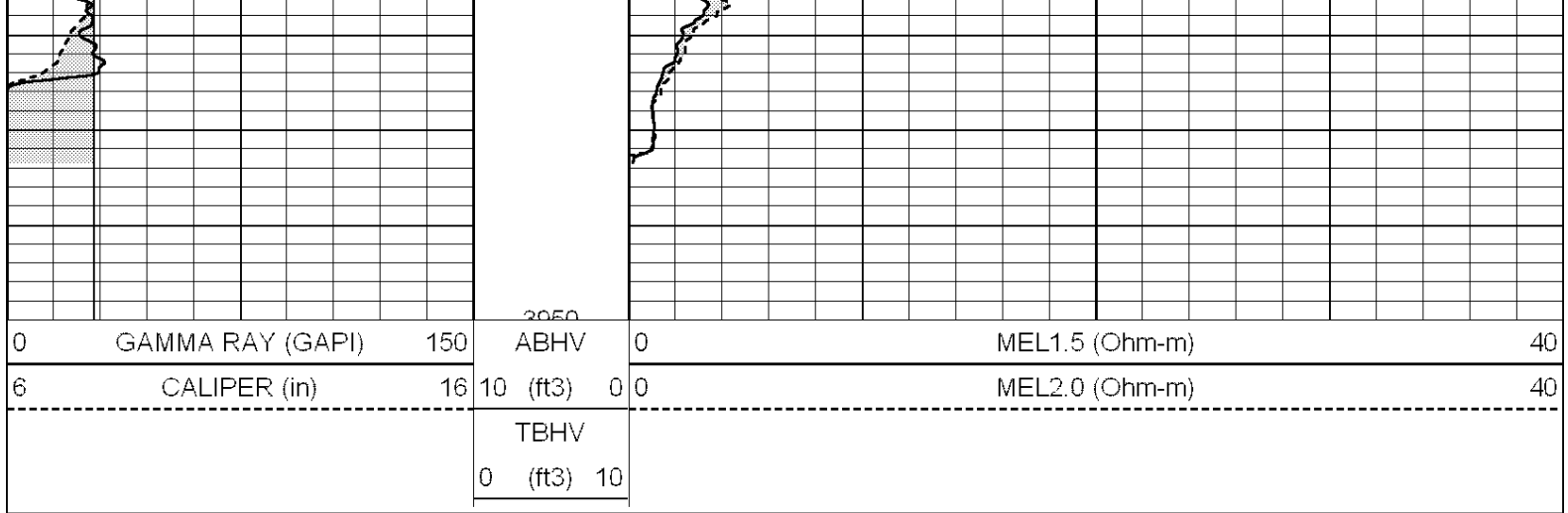


# REPEAT SECTION

Database File: 007899ddn.db  
 Dataset Pathname: pass5.1  
 Presentation Format: \_micro  
 Dataset Creation: Thu Nov 03 12:14:01 2011 by Calc Open-Cased 090629  
 Charted by: Depth in Feet scaled 1:240

|   |                  |     |          |     |                |    |
|---|------------------|-----|----------|-----|----------------|----|
| 0 | GAMMA RAY (GAPI) | 150 | ABHV     | 0   | MEL1.5 (Ohm-m) | 40 |
| 6 | CALIPER (in)     | 16  | 10 (ft3) | 0 0 | MEL2.0 (Ohm-m) | 40 |
|   |                  |     | TBHV     |     |                |    |
|   |                  |     | 0 (ft3)  | 10  |                |    |





Calibration Report

Database File: 007899ddn.db  
 Dataset Pathname: pass5.1  
 Dataset Creation: Thu Nov 03 12:14:01 2011 by Calc Open-Cased 090629

MICRO Calibration Report

Serial Number: MICRO3  
 Tool Model: PROBE  
 Performed: Tue Oct 25 12:58:04 2011

Caliper Calibration: Gain=3.916      Offset=-9.171

|            |         |          |
|------------|---------|----------|
|            | Low Cal | High Cal |
| References | 8.000   | 14.000   |
| Readings   | 4.257   | 5.789    |

1.5" Calibration: Gain=89.104      Offset=0.200

|            |         |          |
|------------|---------|----------|
|            | Low Cal | High Cal |
| References | 0.000   | 20.000   |
| Readings   | 0.004   | 0.228    |

2" Calibration: Gain=107.553      Offset=-0.620

|            |         |          |
|------------|---------|----------|
|            | Low Cal | High Cal |
| References | 0.000   | 20.000   |
| Readings   | 0.005   | 0.175    |

Gamma Ray Calibration Report

Serial Number: #8  
 Tool Model: OPEN  
 Performed: Mon Jun 13 16:56:43 2011

Calibrator Value: 150.0      GAPI

Background Reading: 0.0      cps  
 Calibrator Reading: 175.0      cps

Sensitivity: 0.8371      GAPI/cps