



**GAMMA RAY
NEUTRON
COMPLETION LOG**

WIRELINE SERVICES, INC.
CHANUTE, KANSAS

Company **N & W ENTERPRISES, INC.**
 Well **WALSH/MEYER #INJ 26**
 Field **WALNUT SE**
 County **CRAWFORD** State **KANSAS**
 Location: **API # : 15-037-22187-00-00**
 3795' FSL & 3795' FEL
 NW NW SE NW
 SEC 33 TWP 28S RGE 22E
 Permanent Datum **GL** Elevation **988EST**
 Log Measured From **GL**
 Drilling Measured From **GL**
 Elevation **K.R. D.F. G.L. 988EST.**

Date **12-13-11**
 Run Number **1 NW**
 Depth Diller **423.9'**
 Depth Logger **423.9'**
 Top Log Interval **0**
 Bottom Logged Interval **423.9'**
 Fluid Level **FULL**
 Type Fluid **WATER**
 Production Casing **2 7/8" @ TD @ @**
 Max. Recorded Temp.
 Estimated Cement Top
 Calculated Cement Top
 Amount & Type Cement
 Amount & Type Admix
 Drilling Contractor
 Equipment Number **109**
 Location **SANBORN, G.**
 Recorded By **NORRIS, T.**
 Witnessed By

<<< Fold Here >>>

All interpretations are opinions based on inferences from electrical or other measurements and we cannot and do not guarantee the accuracy or correctness of any interpretation, and we shall not, except in the case of gross or willful negligence on our part, be liable or responsible for any loss, costs, damages, or expenses incurred or sustained by anyone resulting from any interpretation made by any of our officers, agents or employees. These interpretations are also subject to our general terms and conditions set out in our current Price Schedule.

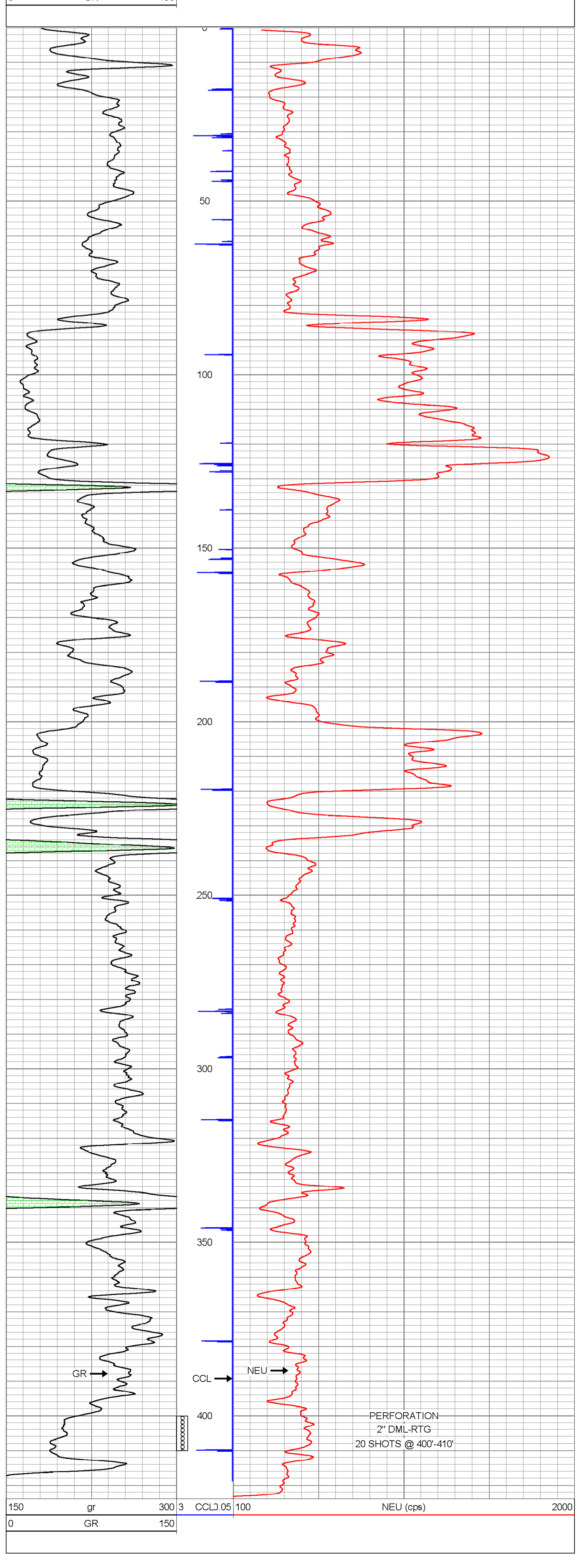
Comments

THANK YOU

Sensor	Offset (ft)	Schematic	Description	Len (ft)	OD (in)	Wt (lb)
GR	7.59		GR-TITAN_169 (TIT169_001) Titan 1 11/16" Gamma Ray	4.75	1.69	20.00
CCL	5.05		CCL-TITAN_169 (TIT169) Titan 1 11/16" Logging CCL	1.83	1.69	7.50
NEU	0.63		NEU-TITAN (TIT801) TITAN 1 11/16" Neutron	4.33	1.69	25.00

Dataset: walsh meyer #inj 26.db: field/well/run1/pass1
 Total Length: 10.92 ft
 Total Weight: 52.50 lb
 O.D. 1.69 in

Database File: g:\walsh meyer #inj 26.db
 Dataset Pathname: pass1
 Presentation Format: gr-n-ccl
 Dataset Creation: Tue Dec 13 14:02:04 2011 by Log Std Casedhole 09061
 Charted by: Depth in Feet scaled 1:240



Company **N & W ENTERPRISES, INC.**
 Well **WALSH/MEYER #INJ 26**
 Field **WALNUT SE**
 County **CRAWFORD** SEC. 33 TWP. 28S RGE. 22E
 State **KANSAS** Date **12-13-11**

