



**GAMMA RAY
NEUTRON
COMPLETION LOG**

WIRELINE
SERVICES, INC.
CHANUTE, KANSAS

Company **N & W ENTERPRISES, INC.**
Well **WALSH/MEYER #28**
Field **WALNUT SE**
County **CRAWFORD** State **KANSAS**

Location: **3300' FSL & 3960' FEL**
S2 NW
SEC 33 TWP 28S RGE 22E
Permanent Datum **GL** Elevation **987EST**
Log Measured From **GL**
Drilling Measured From **GL**

Date **12-16-11**
Run Number **1 NW**
Depth Diller
Depth Logger **424.1'**
Top Log Interval **0**
Bottom Logged Interval **424.1'**
Fluid Level **WATER**
Type Fluid **FULL**
Production Casing **2 7/8" @ TD @ @**
Max. Recorded Temp.
Estimated Cement Top
Calculated Cement Top
Amount & Type Cement
Amount & Type Admix
Drilling Contractor
Equipment Number **109**
Location **SANBORN, G**
Recorded By
Witnessed By **NORRIS, T**

<<< Fold Here >>>

All interpretations are opinions based on inferences from electrical or other measurements and we cannot and do not guarantee the accuracy or correctness of any interpretation, and we shall not, except in the case of gross or willful negligence on our part, be liable or responsible for any loss, costs, damages, or expenses incurred or sustained by anyone resulting from any interpretation made by any of our officers, agents or employees. These interpretations are also subject to our general terms and conditions set out in our current Price Schedule.

Comments

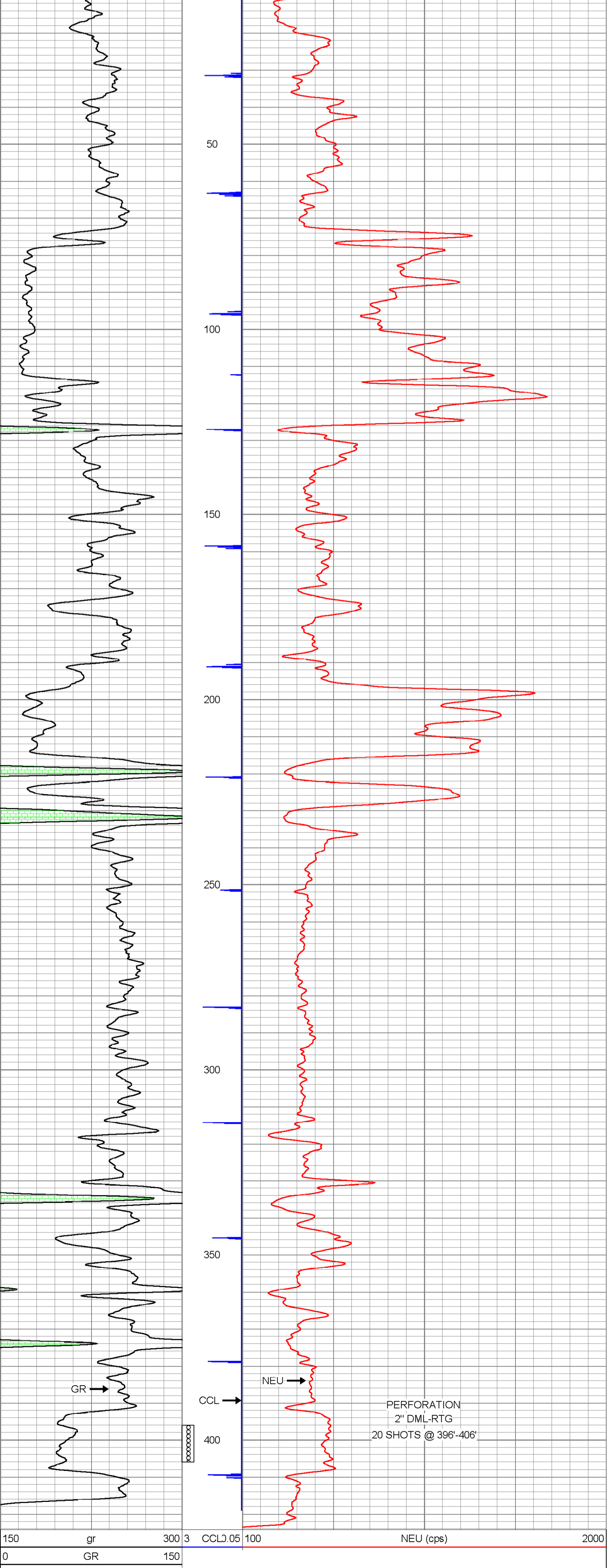
THANK YOU

Sensor	Offset (ft)	Schematic	Description	Len (ft)	OD (in)	Wt (lb)
GR	7.59		GR-TITAN_169 (TIT169_001) Titan 1 11/16" Gamma Ray	4.75	1.69	20.00
CCL	5.05		CCL-TITAN_169 (TIT169) Titan 1 11/16" Logging CCL	1.83	1.69	7.50
NEU	0.63		NEU-TITAN (TIT801) TITAN 1 11/16" Neutron	4.33	1.69	25.00

Dataset: walsh meyer #28.db: field/well/run1/pass1
Total Length: 10.92 ft
Total Weight: 52.50 lb
O.D. 1.69 in

Database File: g:\walsh meyer #28.db
Dataset Pathname: pass1
Presentation Format: gr-n-ccl
Dataset Creation: Fri Dec 16 10:20:20 2011 by Log Std Casedhole 09061
Charted by: Depth in Feet scaled 1:240

150	gr	300	3	CCL.05	100	NEU (cps)	2000
0	GR	150					



150	gr	300	3	CCL.05	100	NEU (cps)	2000
0	GR	150					



Company **N & W ENTERPRISES, INC.**
Well **WALSH/MEYER #28**
Field **WALNUT SE**
County **CRAWFORD** SEC. 33 TWP. 28S RGE. 22E
State **KANSAS** Date **12-16-11**