



**GAMMA RAY
CEMENT BOND
COMPLETION LOG**

Company: DOMESTIC ENERGY PARTNERS, LLC
Well: D. ROBERTSON #A-1
Field: CHEROKEE BASIN COAL

County: WILSON
State: KANSAS
Location: 410 FSL & 2310 FEL
API #: 15-205-27234-00-00

Well: D. ROBERTSON #A-1
Field: CHEROKEE BASIN COAL
County: WILSON
State: KANSAS

Date: 12-20-13
Run Number: 1 NW
Depth Driver: 1305
Depth Logger: 1284.3
Top Log Interval: 0
Bottom Logged Interval: FULL
Fluid Level: WATER
Type Fluid: 4.5" @ TD
Production Casting: TD
Max. Recorded Temp: 8
Estimated Cement Top: 8
Calculated Cement Top: 8
Amount & Type Cement: 8
Drilling Contractor: 103
Equipment Number: SOLIDON/B
WESB, T

<<< Fold Here >>>

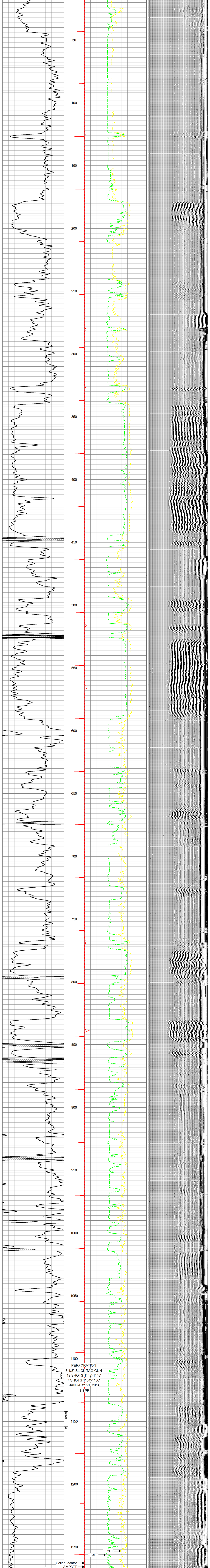
All interpretations are opinions based on inferences from electrical or other measurements and we cannot and do not guarantee the accuracy or correctness of any interpretation, and we shall not, except in the case of gross or willful negligence on our part, be liable or responsible for any loss, costs, damages, or expenses incurred or sustained by anyone resulting from any interpretation made by any of our officers, agents or employees. These interpretations are also subject to our general terms and conditions set out in our current Price Schedule.

Comments: THANK YOU

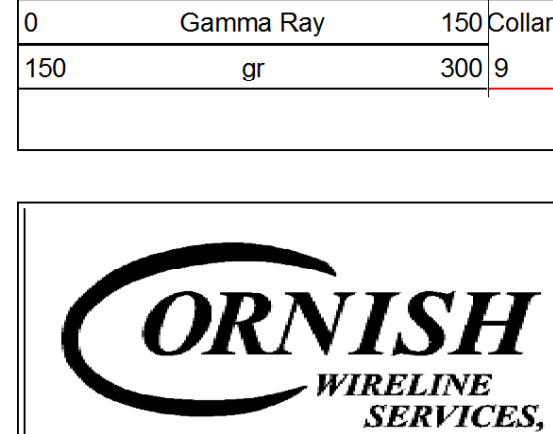
Sensor	Offset (ft)	Schematic	Description	Len (ft)	OD (in)	Wt (lb)
			tekco tekco cent.	2.17	1.69	5.00
WVF3FT	6.58		CBLTEKCO-TEKCO2RCVVR (TEKCO169) 1 11/16" TEKCO 2 RCVR DELWARE	9.75	1.69	50.00
WVF5FT	5.58					
WVFCAL	2.17		tekco tekco cent.	2.17	1.69	5.00
WVFSYNC	2.17					

Dataset: d robertson #a-1.db: field/well/run1/pass1MERGE
Total Length: 14.08 ft
Total Weight: 60.00 lb
O.D.: 1.69 in

Database File: p:\logs\domestic energy partners, llc\d robertson #a-1\d robertson #a-1.db
Dataset Pathname: pass1MERGE
Presentation Format: scb_l
Dataset Creation: Fri Dec 20 12:13:38 2013
Charted by: Depth in Feet scaled 1:240



0 Gamma Ray 150 Collar Locator 0 AMP3FT (mV) 100 200 VDL 1200
150 gr 300 9 0 1100 TT3FT (usec) 200
1800 TT5FT (usec) 200



Company: DOMESTIC ENERGY PARTNERS, LLC.
Well: D. ROBERTSON #A-1
Field: CHEROKEE BASIN COAL
County: WILSON SEC. 5 TWP.29S RGE. 14E
State: KANSAS Date: 12-20-13