



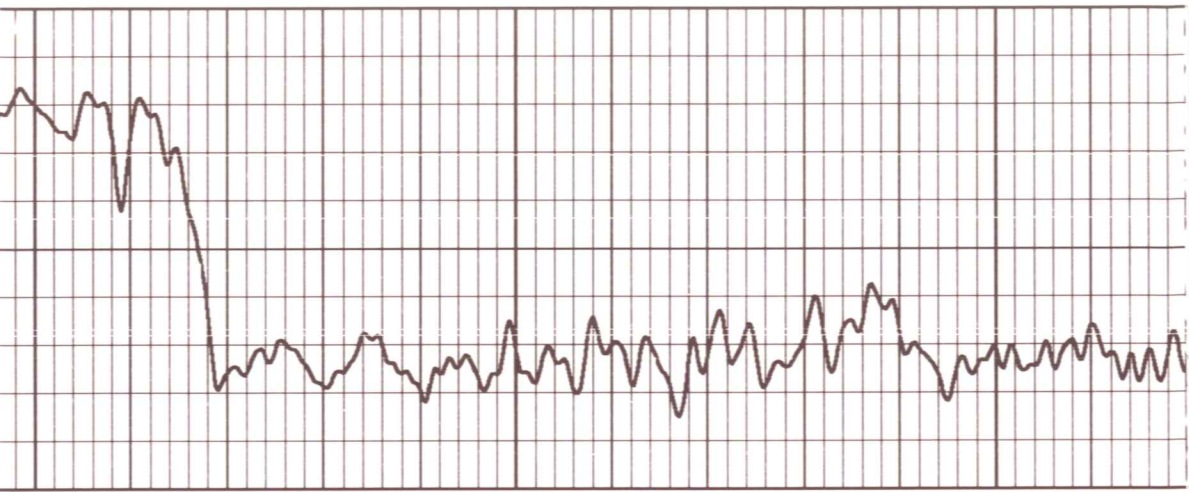
All interpretations are opinions based on inferences from electrical or other measurements and we cannot and do not guarantee the accuracy or correctness of any interpretation, and we shall not, except in the case of gross or willful negligence on our part, be liable or responsible for any loss, costs, damages, or expenses incurred or sustained by anyone resulting from any interpretation made by any of our officers, agents or employees. These interpretations are also subject to our general terms and conditions set out in our current Price Schedule.

Comments

Drilling Contractor :  
John Leis Oilfield Services

Database File: miller7.db  
Dataset Pathname: pass1  
Presentation Format: gr-n-ccl  
Dataset Creation: Fri Jul 29 15:06:20 2011 by Log Std Casehole 07122  
Charted by: Depth in Feet scaled 1:240

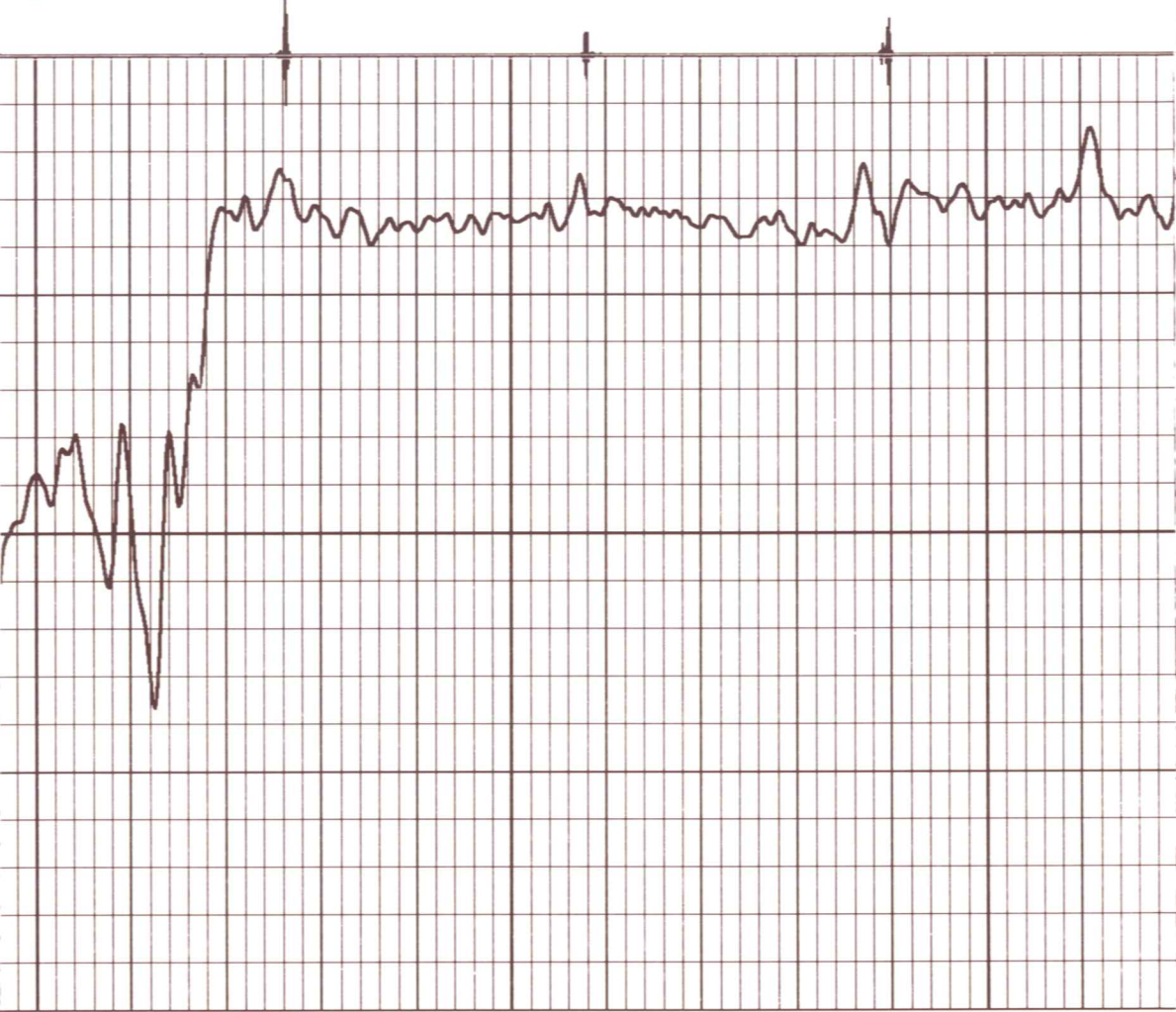


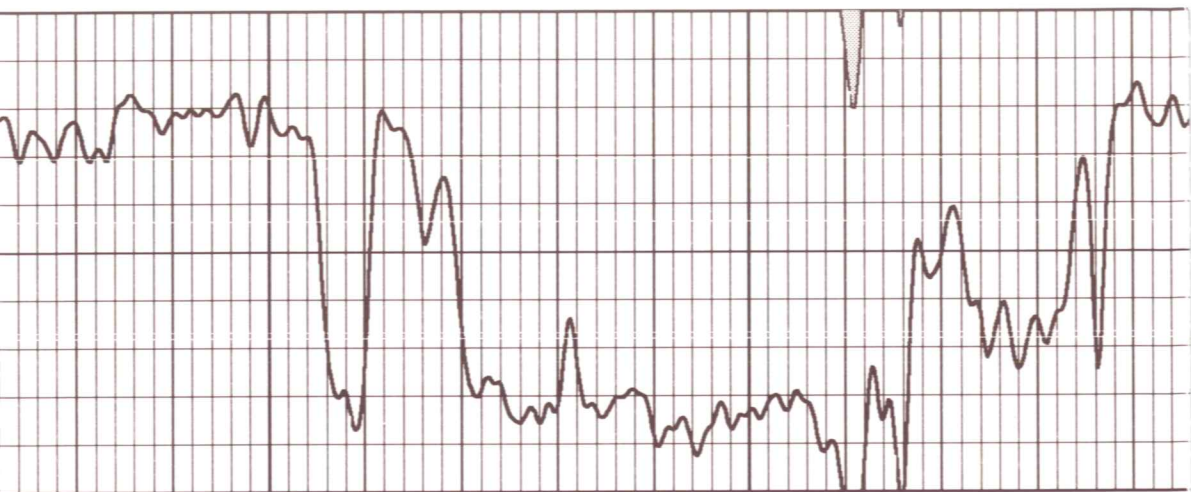


150

100

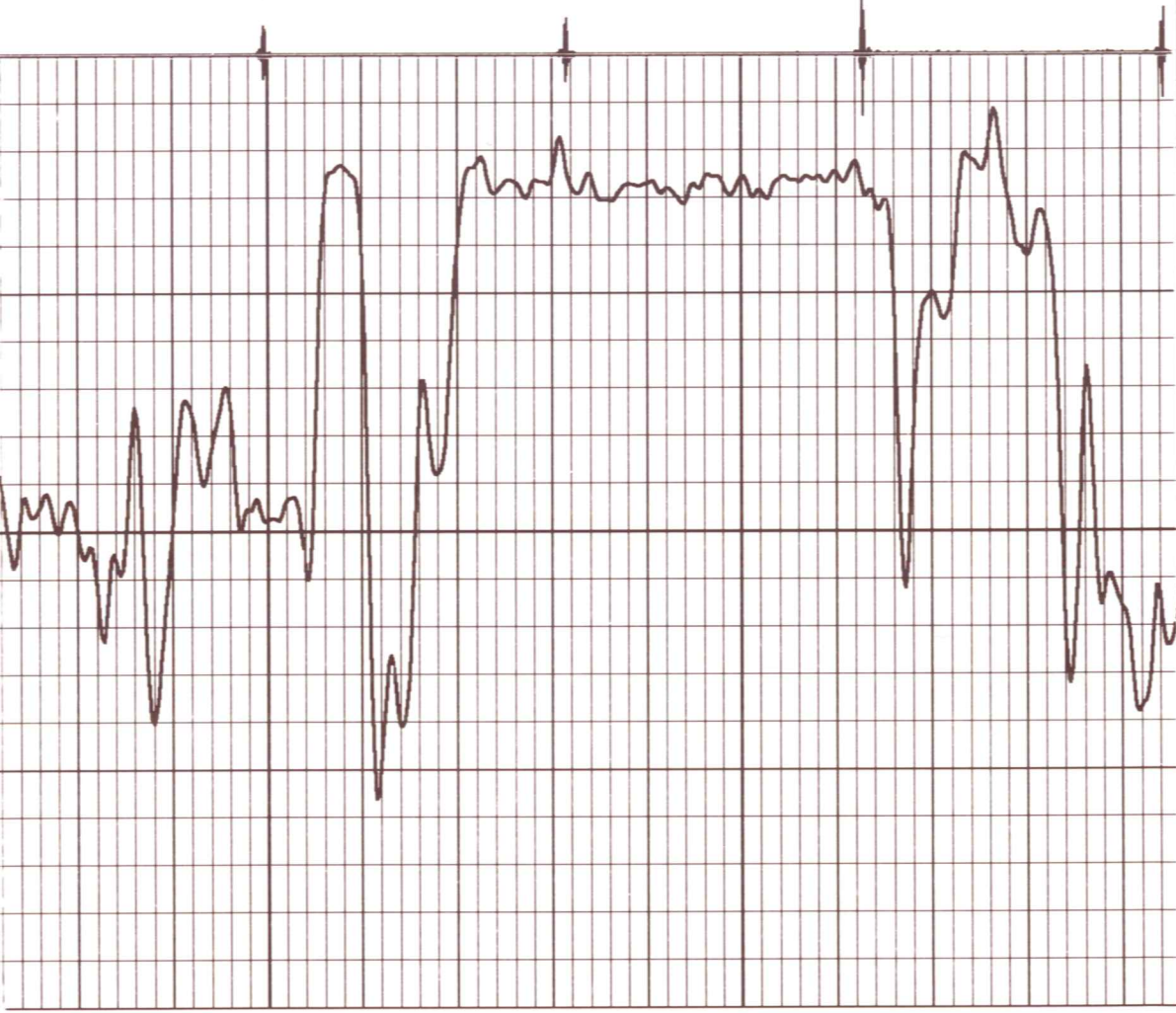
50

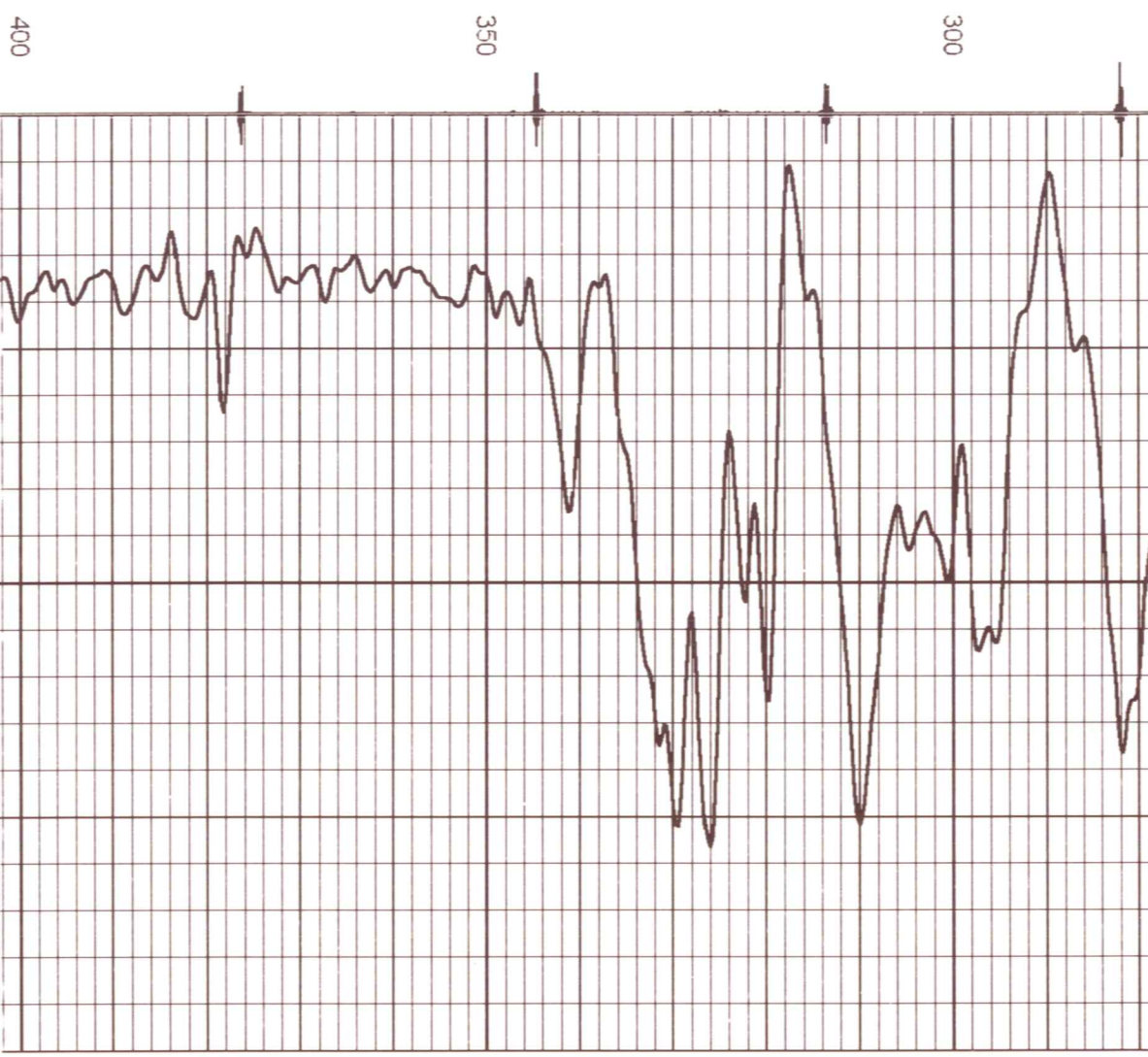
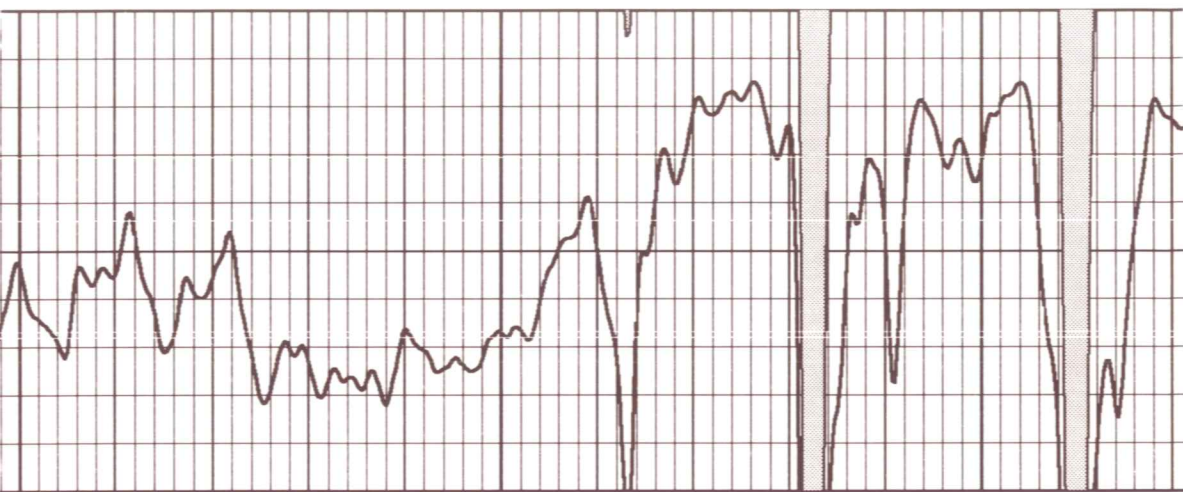


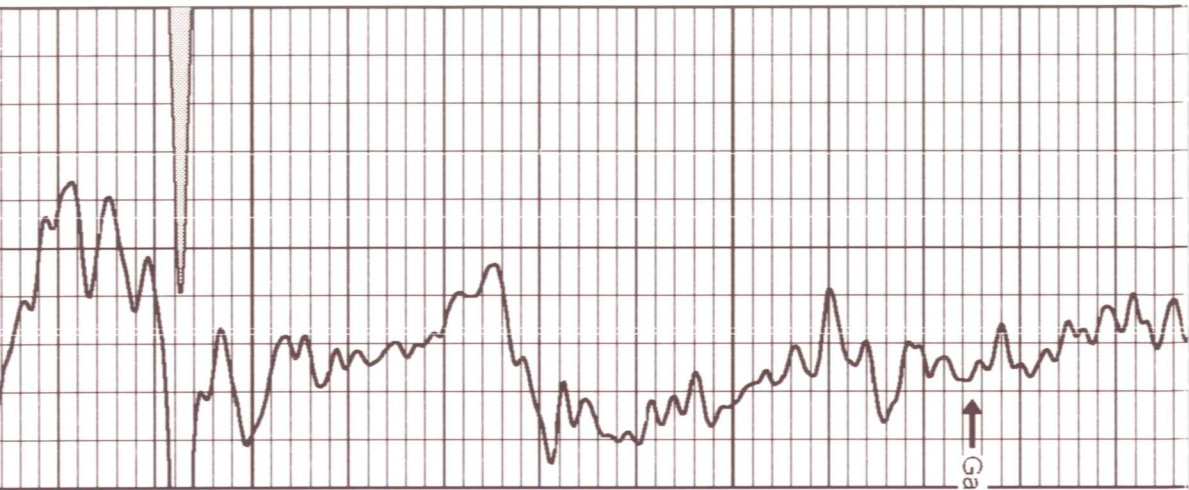


250

200





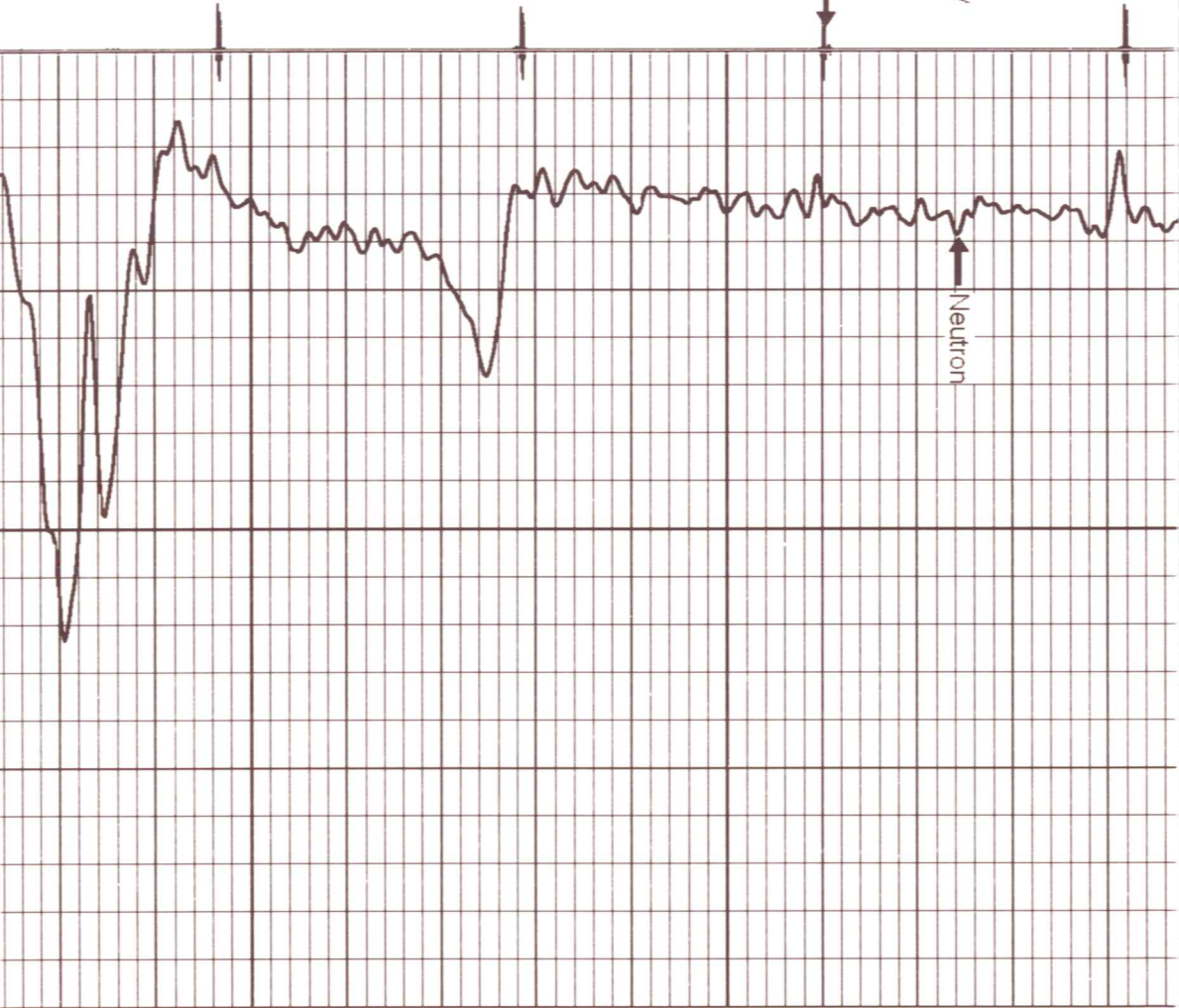


500

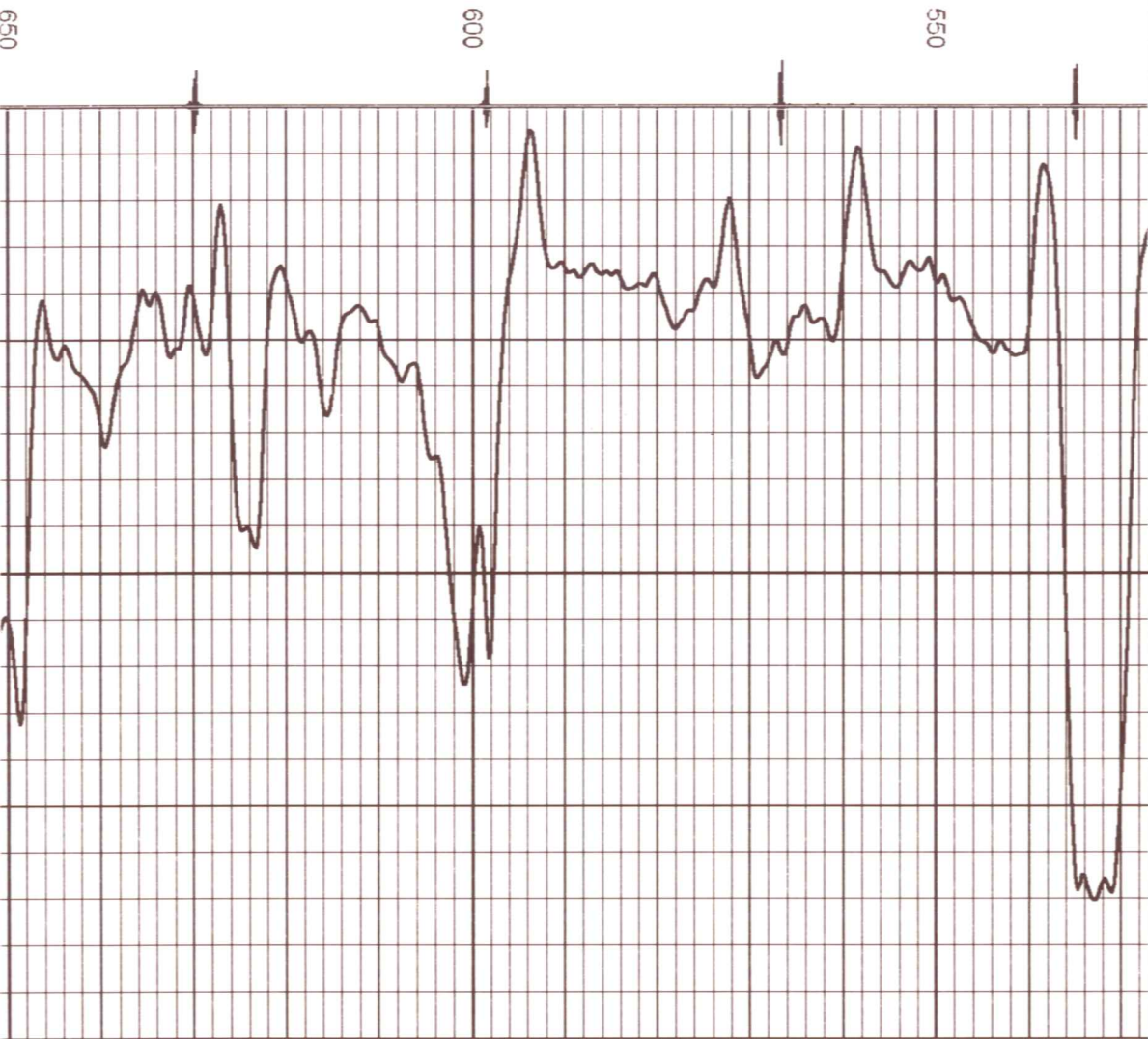
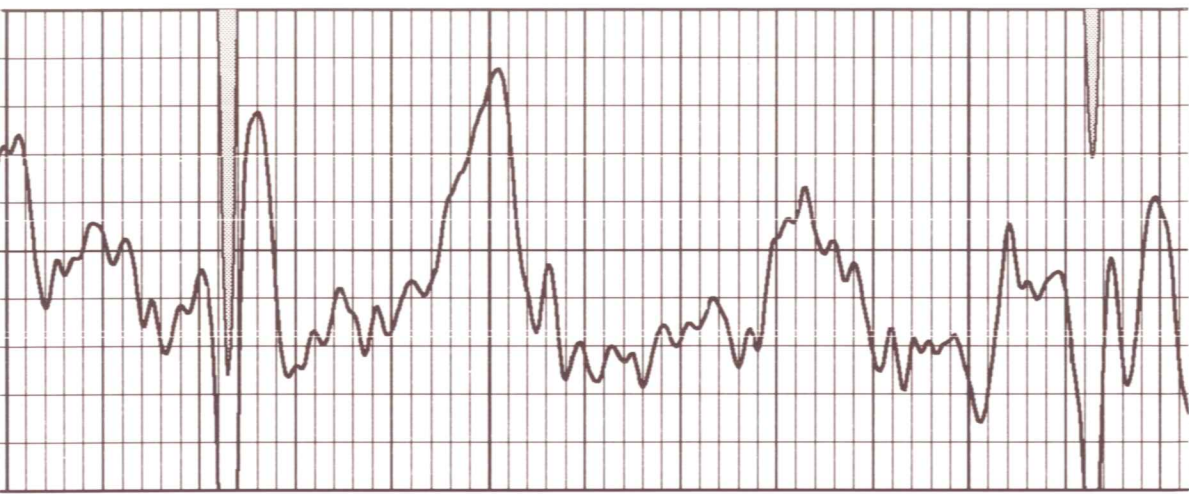
450

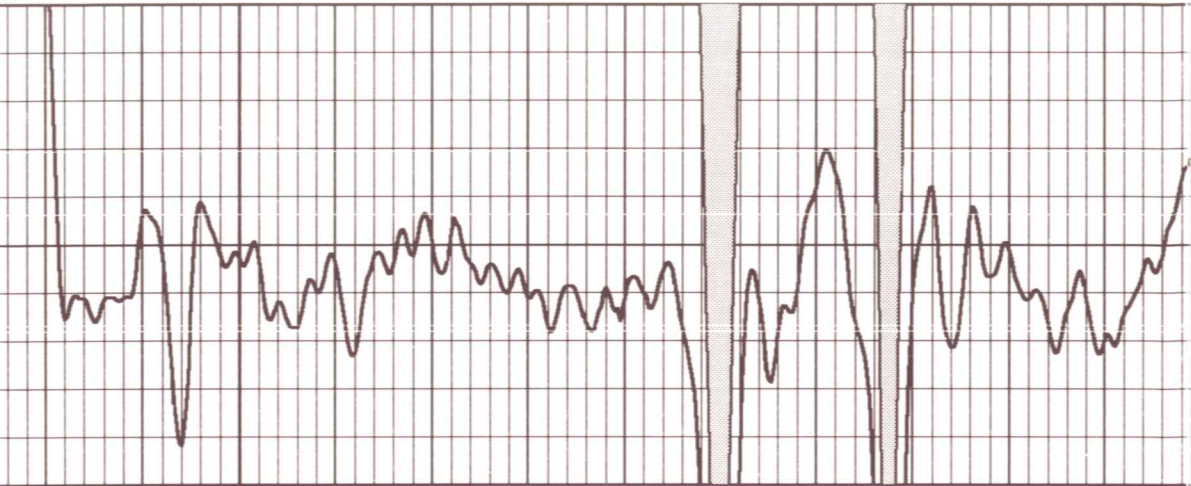
OCL

Gamma Ray



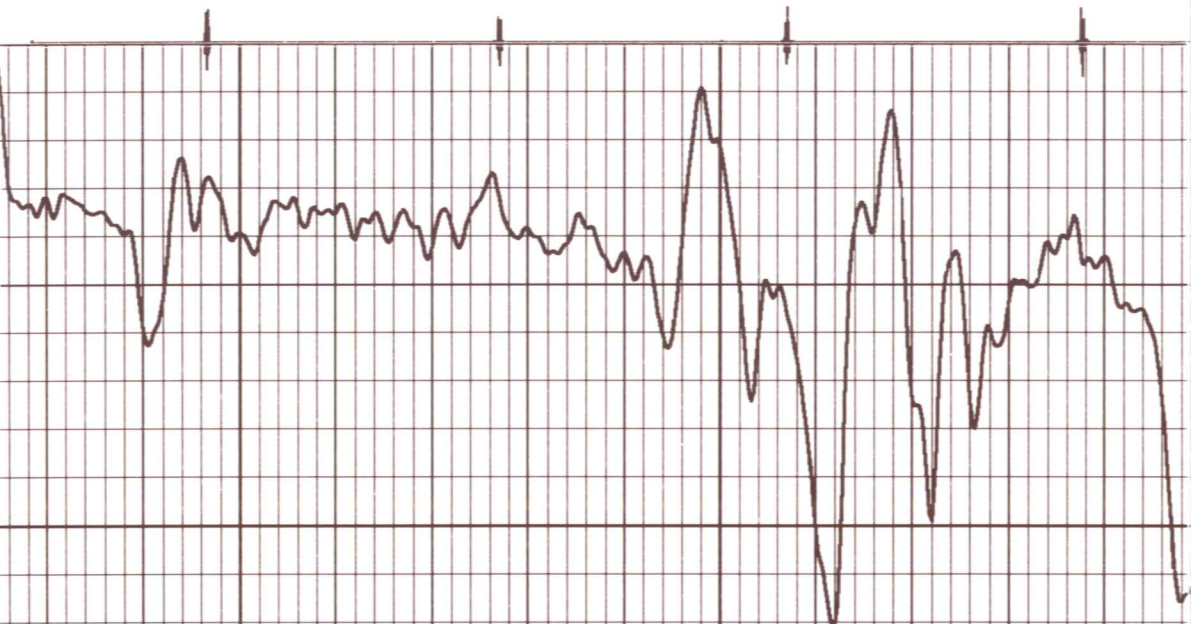
Neutron





750

700



08-16-2011  
Perforated Intervals  
2" DML RTG  
726.0 - 736.0 21 Perfs  
740.0 - 750.0 21 Perfs

0	Gamma Ray (cps)	150	10	Neutron (cps)	2100
---	-----------------	-----	----	---------------	------