



DIGITAL LOG (785) 625-3858

Dual Compensated Porosity Log

15-101-22,330-00-00

Company Mid-Continent Energy Operating Co.
 Well Brenner No.1-26
 Field Wildcat
 County Lane State Kansas
 Location SW SE NW SW
 1330' FSL & 970' FWL
 Sec: 26 Twp: 19S Rge: 27W

Permanent Datum Ground Level Elevation 2702
 Log Measured From Kelly Bushing 8 Ft. Above Perm. Datum
 Drilling Measured From Kelly Bushing
 Date 11/5/2011
 Run Number One
 Type Log CNL / CDL
 Depth Driller 4702
 Depth Logger 4703
 Bottom Logged Interval 4682
 Top Logged Interval 3800
 Type Fluid In Hole Chemical
 Salinity, PPM CL 8,000
 Density 9.2
 Level Full
 Max. Rec. Temp. F 123
 Operating Rig Time 4 Hours
 Equipment -- Location 17 Hays
 Recorded By C. Desaire
 Witnessed By Austin Garner

Other Services
 DIL
 MEL
 Elevation
 K.B. 2710
 D.F.
 G.L. 2702

Run No.	Bit	Borehole Record		Casing Record	
		From	To	From	To
1	12.25	00	310	8.625	24#
2	7.875	310	4702		

<<< Fold Here >>>

All interpretations are opinions based on inferences from electrical or other measurements and we cannot and do not guarantee the accuracy or correctness of any interpretation, and we shall not, except in the case of gross or willful negligence on our part, be liable or responsible for any loss, costs, damages, or expenses incurred or sustained by anyone resulting from any interpretation made by any of our officers, agents or employees. These interpretations are also subject to our general terms and conditions set out in our current Price Schedule.

Comments

Thank you for using Log-Tech, Inc.
 (785) 625-3858
 Beeler, W to Turkey Red Rd,
 7 S to 80 Rd, 2 E, S Into

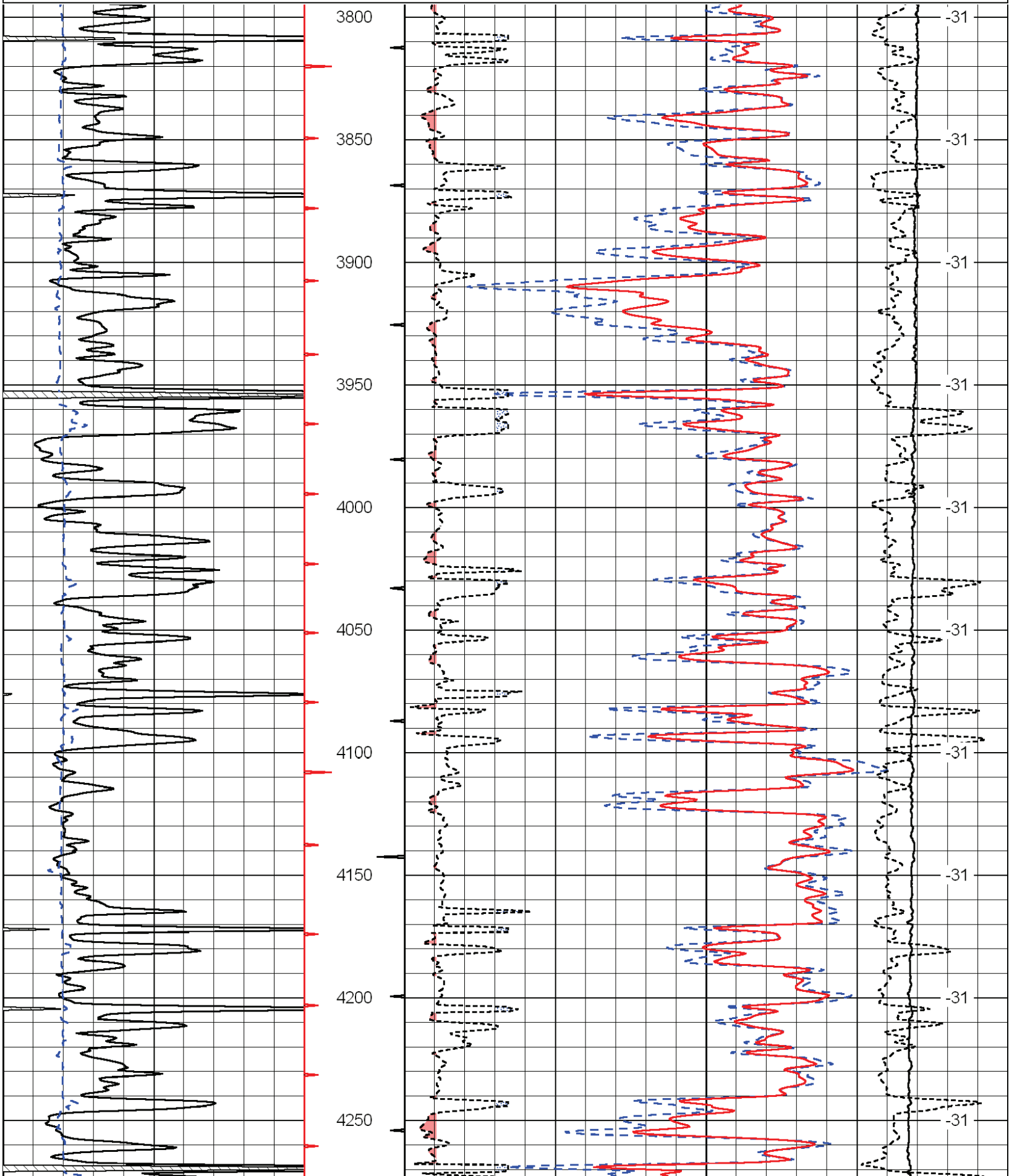
Database File: c:\warrior\data\mid-continent energy_brenner no.1-26\midconhd.db
 Dataset Pathname: dil/midstk
 Presentation Format: cdl
 Dataset Creation: Sat Nov 05 04:31:09 2011
 Charted by: Depth in Feet scaled 1:600

Charted by:

Depth in Feet scaled 1:1000

0	Gamma Ray	150
6	Caliper (GAPI)	16

30	Compensated Density		-10
2	Bulk Density		3
15000	Line Tension		0
2.625	DGA	3.425	-0.25
			Correction
			LSPD



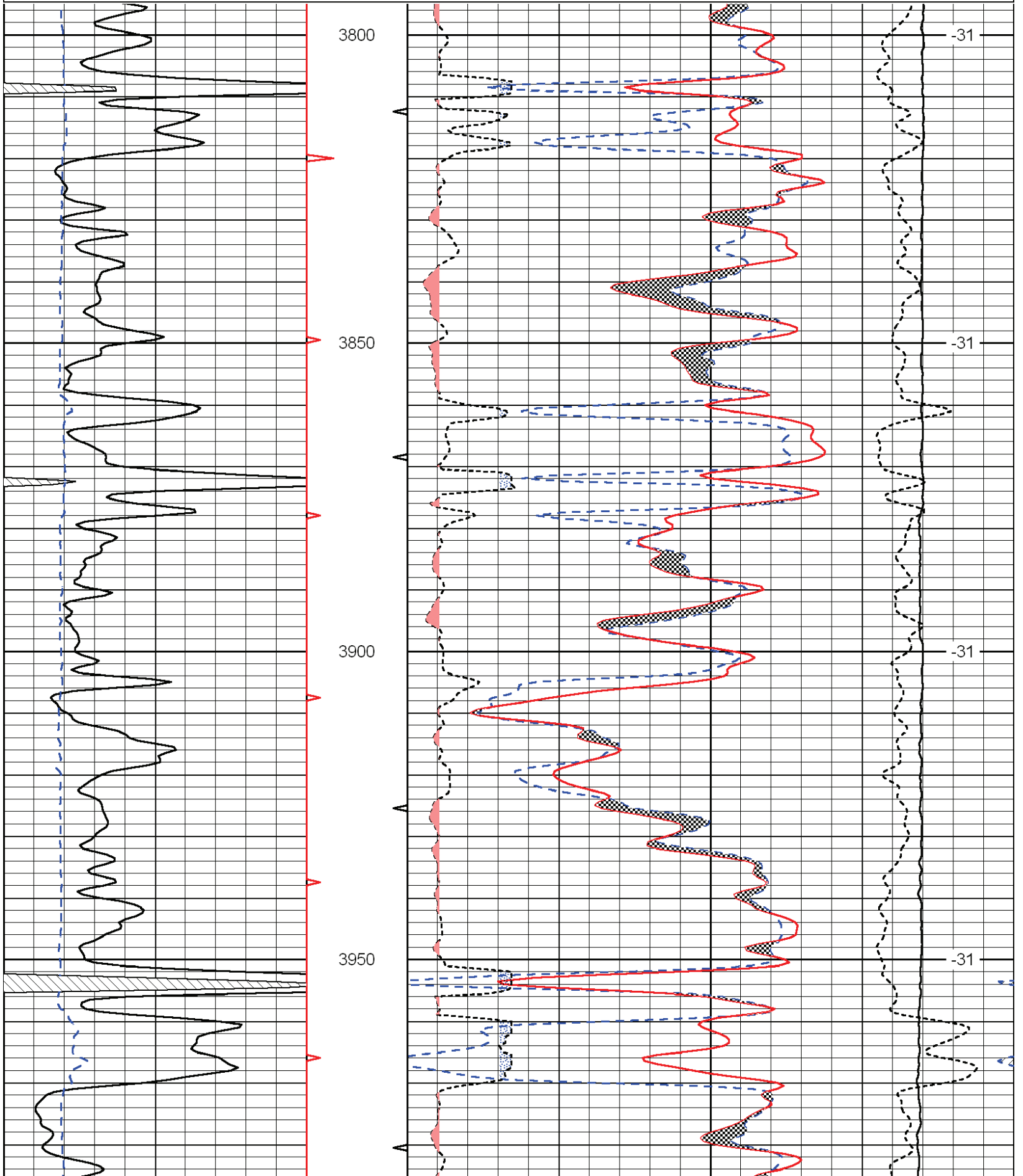
Charted by:

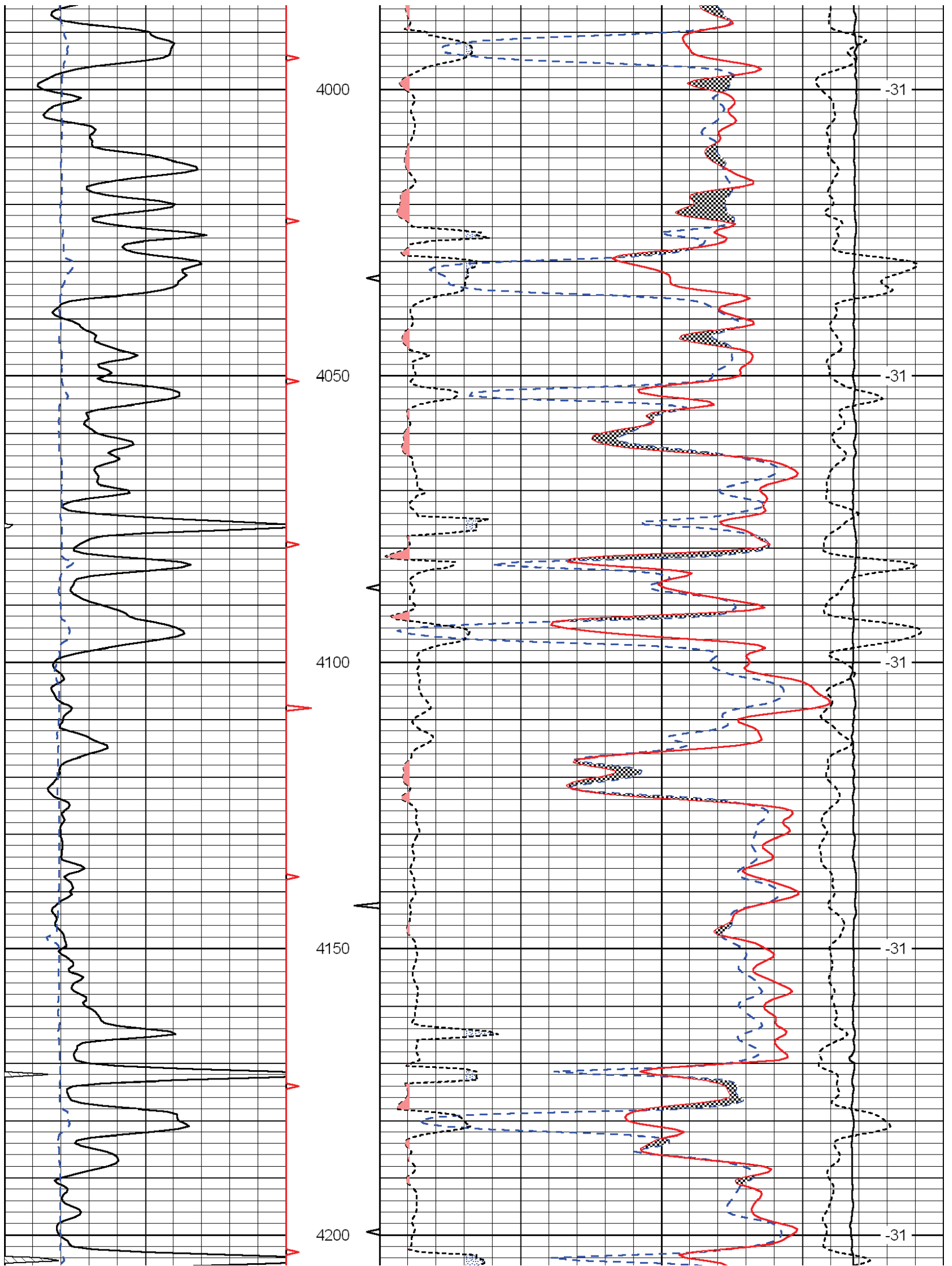
Depth in Feet scaled 1:240

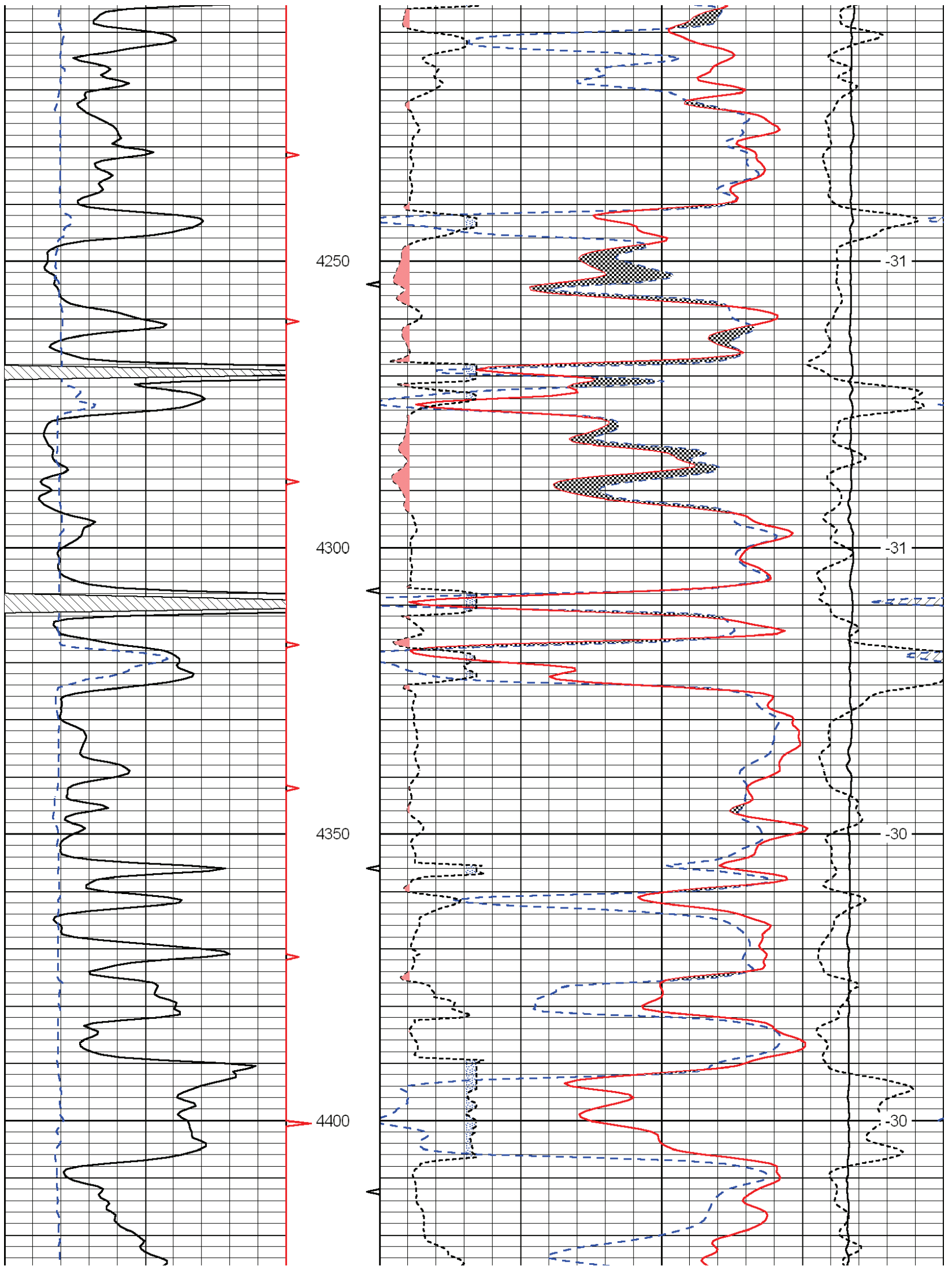
0	Gamma Ray	150
6	Caliper (GAPI)	16

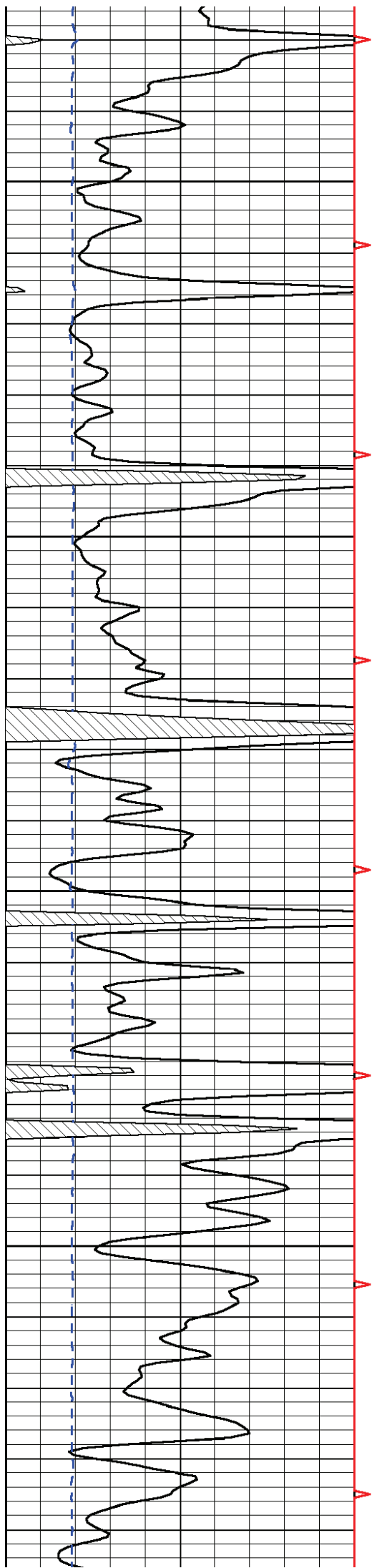
30	Compensated Neutron (Limestone)			-10	
30	Compensated Density (Limestone)			-10	
2.625	DGA	3.425	-0.25	Correction	0.25
15000	Line Tension			0	

LSPD







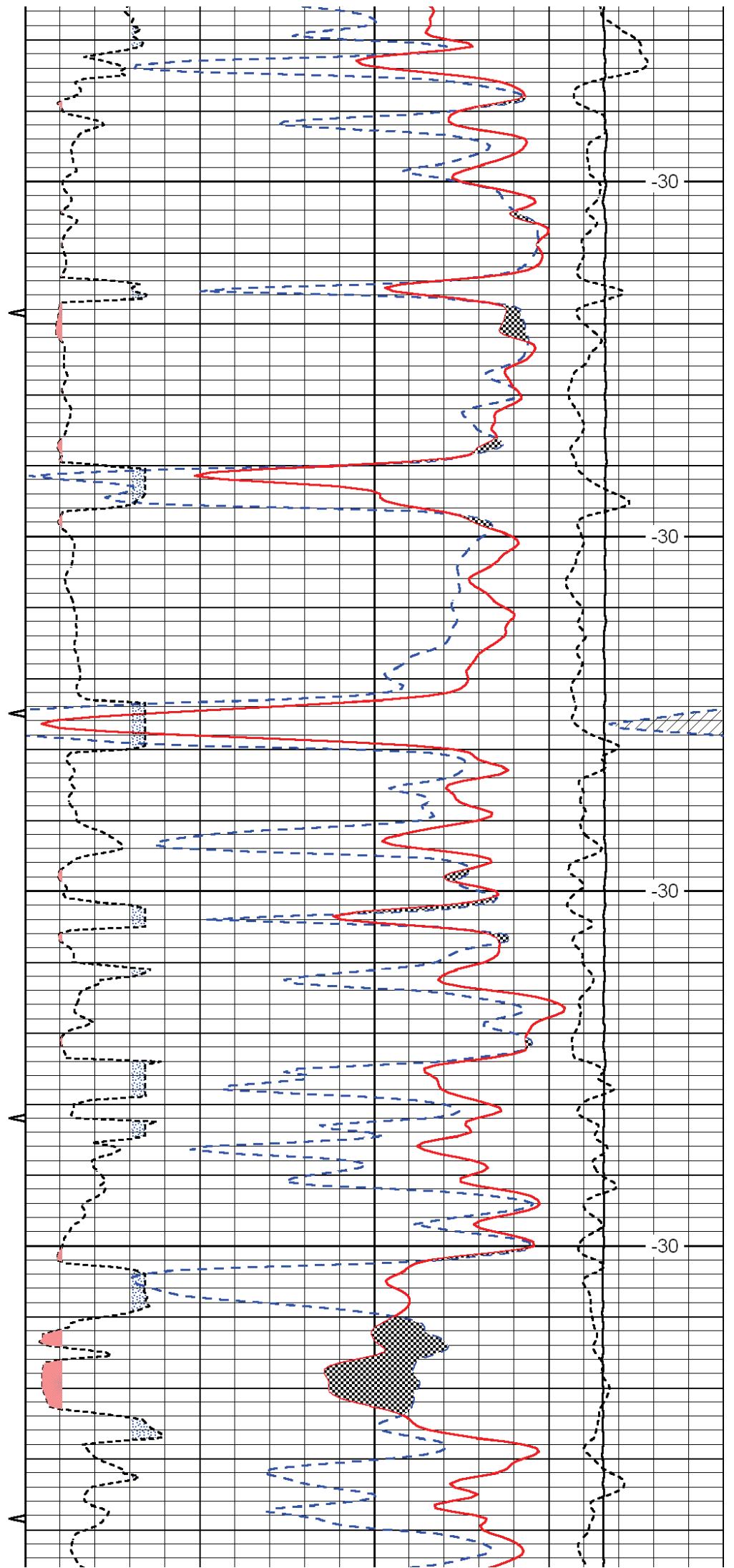


4450

4500

4550

4600

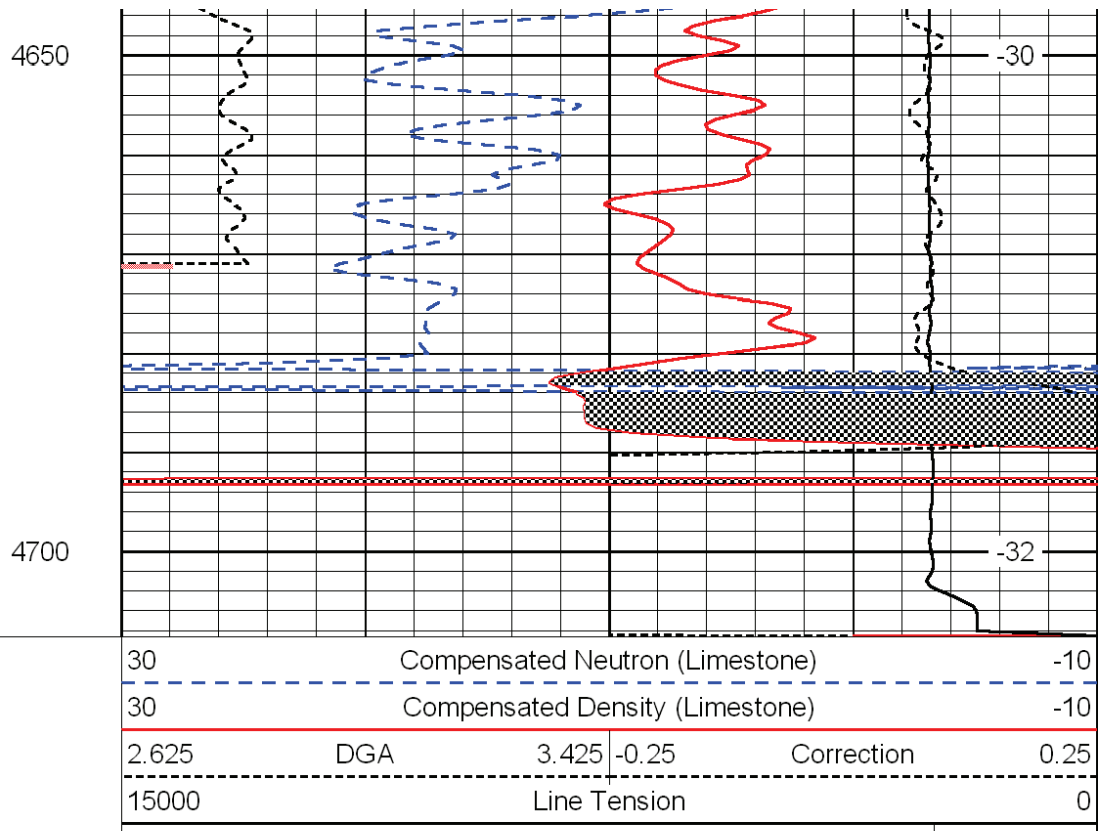
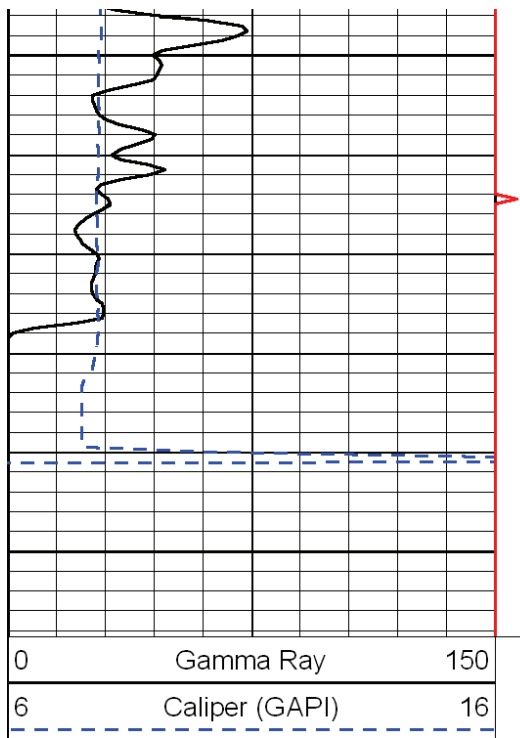


-30

-30

-30

-30



LSPD