

Schlumberger

Company: Noble Energy, Inc.

Well: Lampe 22-33B

Field: Cherry Creek Niobrara Gas Area

County: Cheyenne **State:** Kansas

CBL - VDL
GR - CCL

County: Cheyenne
Field: Cherry Creek Niobrara Gas Area
Location: Sec. 33, T3S, R41W
Well: Lampe 22-33B
Company: Noble Energy, Inc.

LOCATION			
Sec. 33, T3S, R41W	Elev.:	K.B.	3570.00 ft
SHL: 1600' FNL / 2275' FWL	G.L.		3564.00 ft
	D.F.		3569.00 ft
Permanent Datum:	Ground Level		
Log Measured From: Kelly Bushing		Elev.:	6.00 ft above Perm. Datum
Drilling Measured From: Kelly Bushing			
API Serial No. 15-023-21328-000C	Section 33	Township 3S	Range 41W

Logging Date	7-Sep-2011		
Run Number	1		
Depth Driller	1601 ft		
Schlumberger Depth	1550 ft		
Bottom Log Interval	1542 ft		
Top Log Interval	0 ft		
Casing Fluid Type	Water		
Salinity			
Density	8.4 lbm/gal		
Fluid Level	0 ft		
BIT/CASING/TUBING STRING			
Bit Size	6.250 in		
From			
To			
Casing/Tubing Size	4.500 in		
Weight	10.5 lbm/ft		
Grade			
From			
To			
Maximum Recorded Temperatures	97 degF		
Logger On Bottom	7-Sep-2011	Time	8:00
Unit Number	383	Location	Fort Morgan
Recorded By	Shane Walker		
Witnessed By	Gerald Lauer		

PVT DATA			
Oil Density		Run 1	Run 2
Water Salinity			
Gas Gravity			
Bo			
Bw			
1/Bq			
Bubble Point Pressure			
Bubble Point Temperature			
Solution GOR			
Maximum Deviation			
CEMENTING DATA			
Primary/Squeeze	Primary		
Casing String No			
Lead Cement Type			
Volume			
Density			
Water Loss			
Additives			
Tail Cement Type			
Volume			
Density			
Water Loss			
Additives			
Expected Cement Top			
Logging Data			
Logging Date	7-Sep-2011		
Run Number	1		
Depth Driller	1601 ft		
Schlumberger Depth	1550 ft		
Bottom Log Interval	1542 ft		
Top Log Interval	0 ft		
Casing Fluid Type	Water		
Salinity			
Density	8.4 lbm/gal		
Fluid Level	0 ft		
BIT/CASING/TUBING STRING			
Bit Size	6.250 in		
From			
To			
Casing/Tubing Size	4.500 in		
Weight	10.5 lbm/ft		
Grade			
From			
To			
Maximum Recorded Temperatures	97 degF		
Logger On Bottom	7-Sep-2011	Time	8:00
Unit Number	383	Location	Fort Morgan
Recorded By	Shane Walker		
Witnessed By	Gerald Lauer		

DISCLAIMER
 THE USE OF AND RELIANCE UPON THIS RECORDED-DATA BY THE HEREIN NAMED COMPANY (AND ANY OF ITS AFFILIATES, PARTNERS, REPRESENTATIVES, AGENTS, CONSULTANTS AND EMPLOYEES) IS SUBJECT TO THE TERMS AND CONDITIONS AGREED UPON BETWEEN SCHLUMBERGER AND THE COMPANY, INCLUDING: (a) RESTRICTIONS ON USE OF THE RECORDED-DATA; (b) DISCLAIMERS AND WAIVERS OF WARRANTIES AND REPRESENTATIONS REGARDING COMPANY'S USE OF AND RELIANCE UPON THE RECORDED-DATA; AND (c) CUSTOMER'S FULL AND SOLE RESPONSIBILITY FOR ANY INFERENCE DRAWN OR DECISION MADE IN CONNECTION WITH THE USE OF THIS RECORDED-DATA.

OTHER SERVICES1

OS1: Swab
 OS2: Perf
 OS3:
 OS4:
 OS5:

OTHER SERVICES2

OS1:
 OS2:
 OS3:
 OS4:
 OS5:

REMARKS: RUN NUMBER 1

Log correlated to log ran by Schlumberger dated 30-Aug-2011
 Perf interval 1370' - 1409'
 Gun Length: 39', 3 SPF, 117 shots
 120 deg phasing, EH .41", Pen 18.5", 16.5 grams

REMARKS: RUN NUMBER 2

Thank you for choosing Schlumberger

Crew: Shane Walker, Kenan Noe

RUN 1

SERVICE ORDER #: BEW4-00135
 PROGRAM VERSION: 18C0-147
 FLUID LEVEL: 0 ft

RUN 2

SERVICE ORDER #:
 PROGRAM VERSION:
 FLUID LEVEL:

LOGGED INTERVAL	START	STOP

LOGGED INTERVAL	START	STOP

EQUIPMENT DESCRIPTION


RUN 1


SURFACE EQUIPMENT

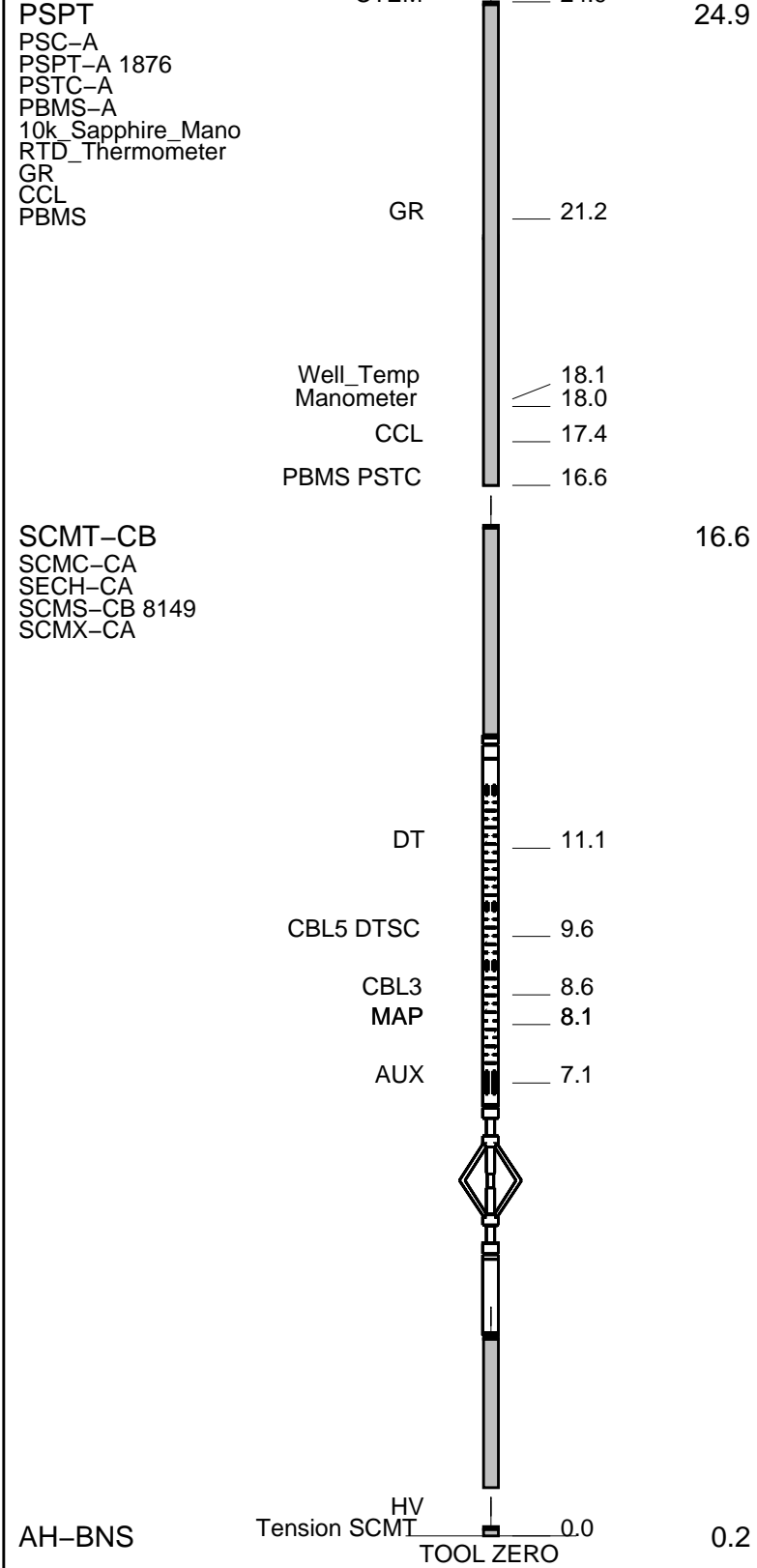
WITM-A
 PSC_16MHZ

RUN 2

DOWNHOLE EQUIPMENT

MH-22  26.7
 MH-22

AH-38  25.2
 Detail MT
 TelStatus
 CTEM
 24.9



MAXIMUM STRING DIAMETER 1.69 IN
 MEASUREMENTS RELATIVE TO TOOL ZERO
 ALL LENGTHS IN FEET

Input DLIS Files

DEFAULT SCMT_PSP_002LUP FN:1 PRODUCER 07-Sep-2011 08:01 1560.5 FT 3.0 FT

Output DLIS Files

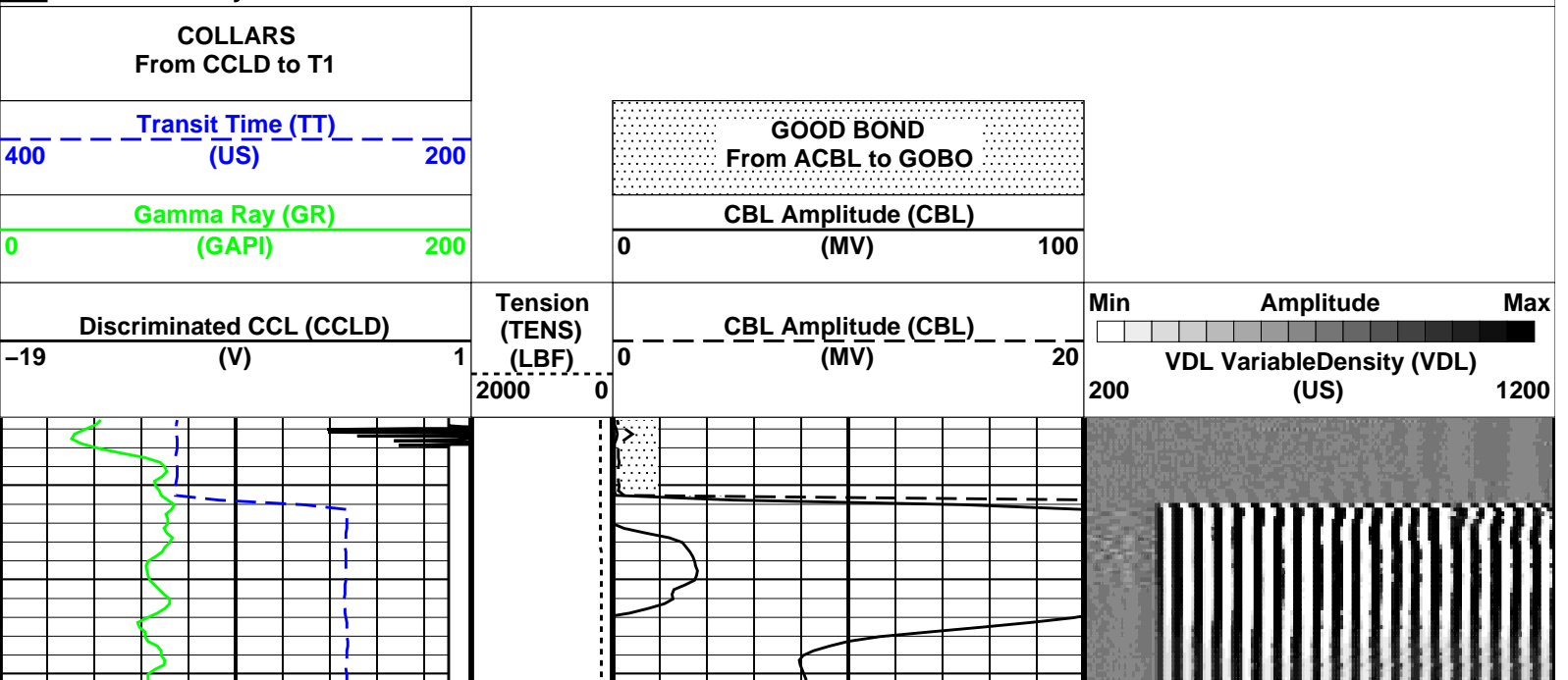
DEFAULT SCMT_PSP_005PUP FN:4 PRODUCER 07-Sep-2011 08:31 1560.0 FT 2.5 FT

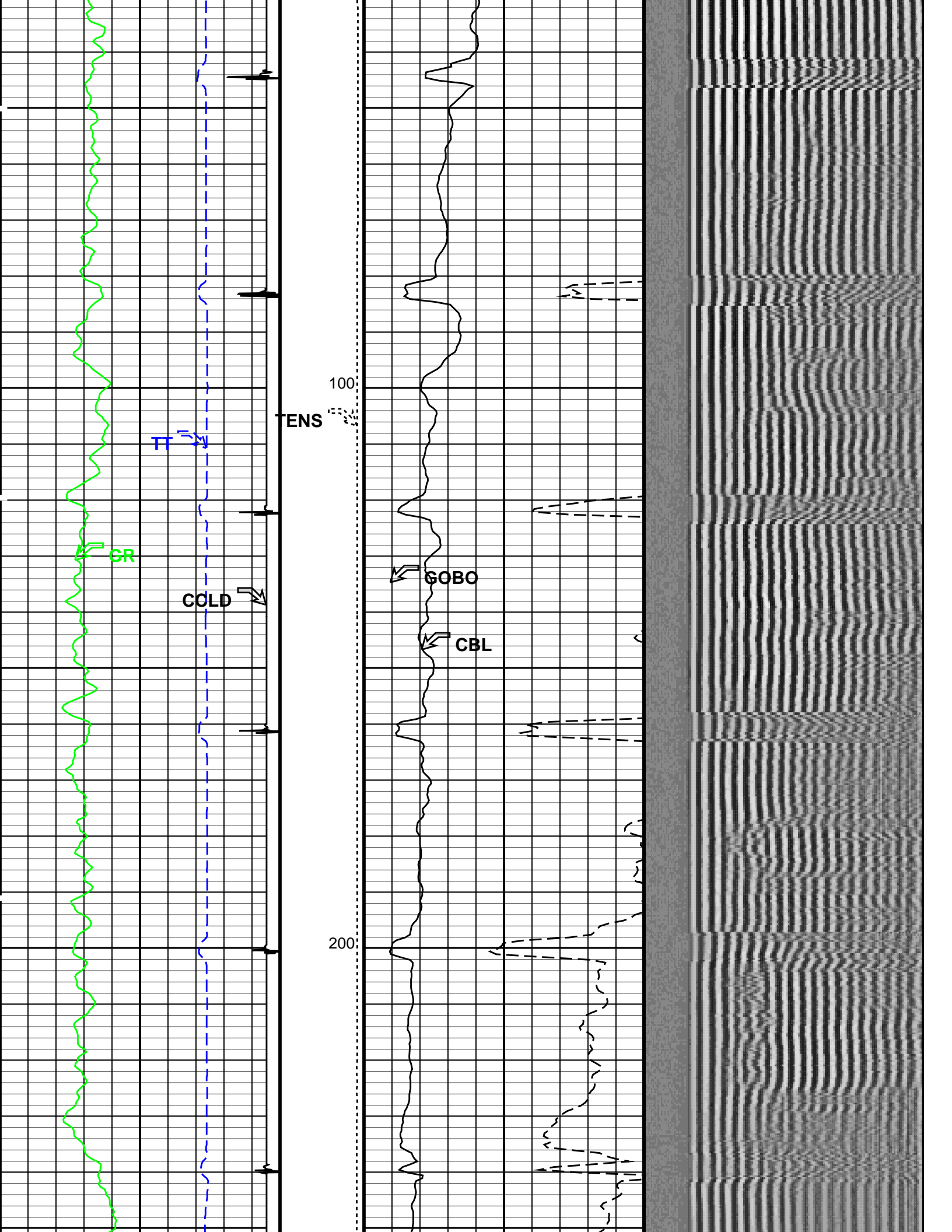
OP System Version: 18C0-147

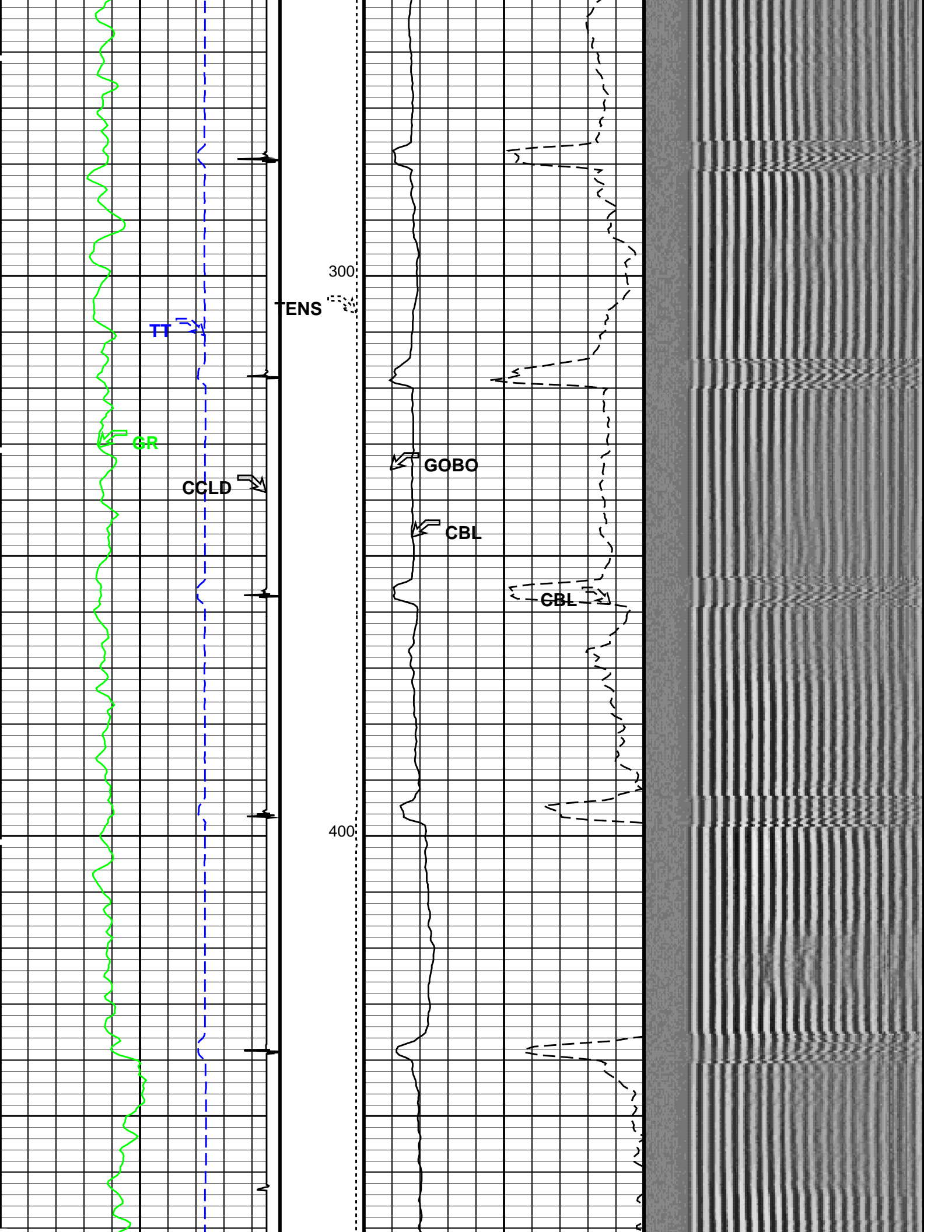
SCMT-CB HFE-4028-IFLEX PSPT HFE-4028-IFLEX

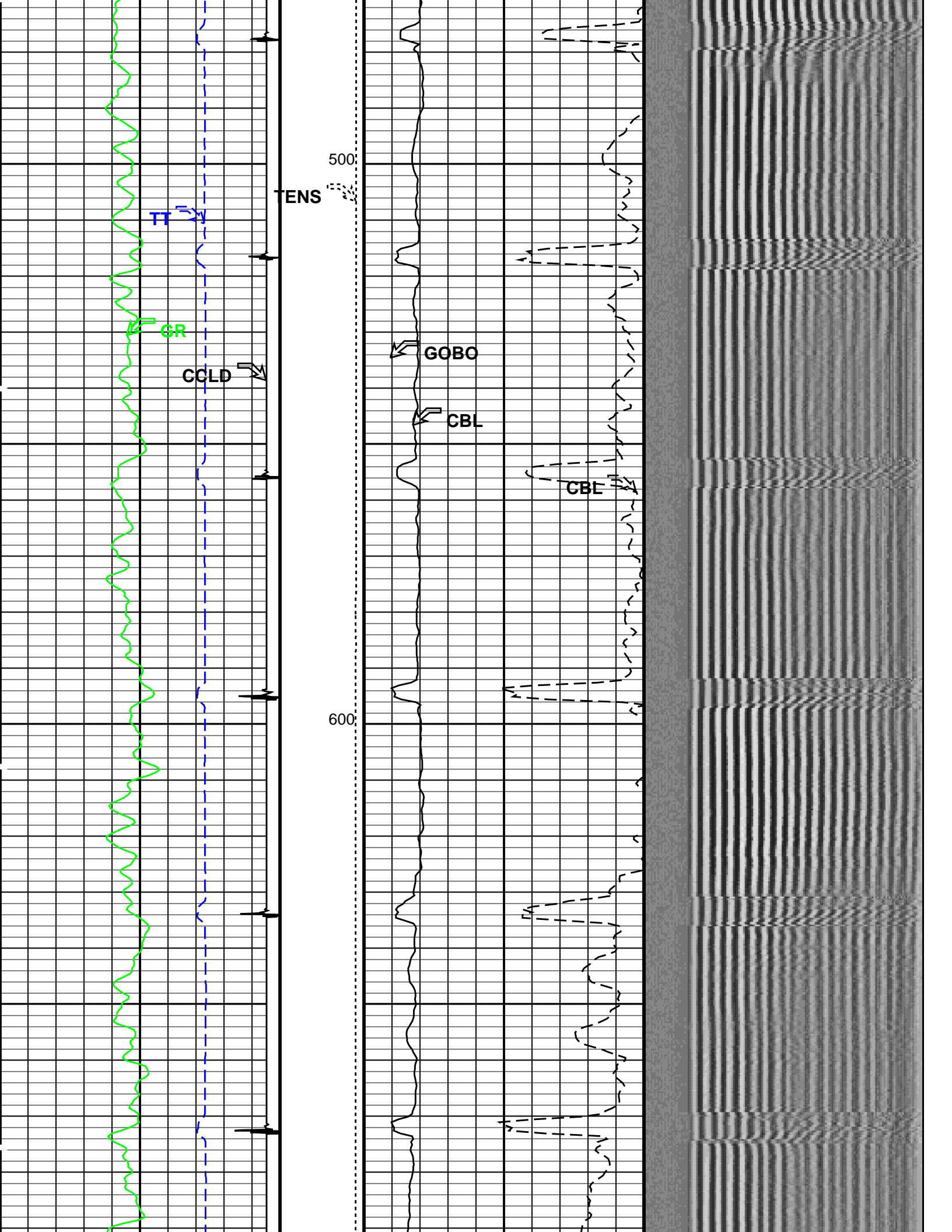
PIP SUMMARY

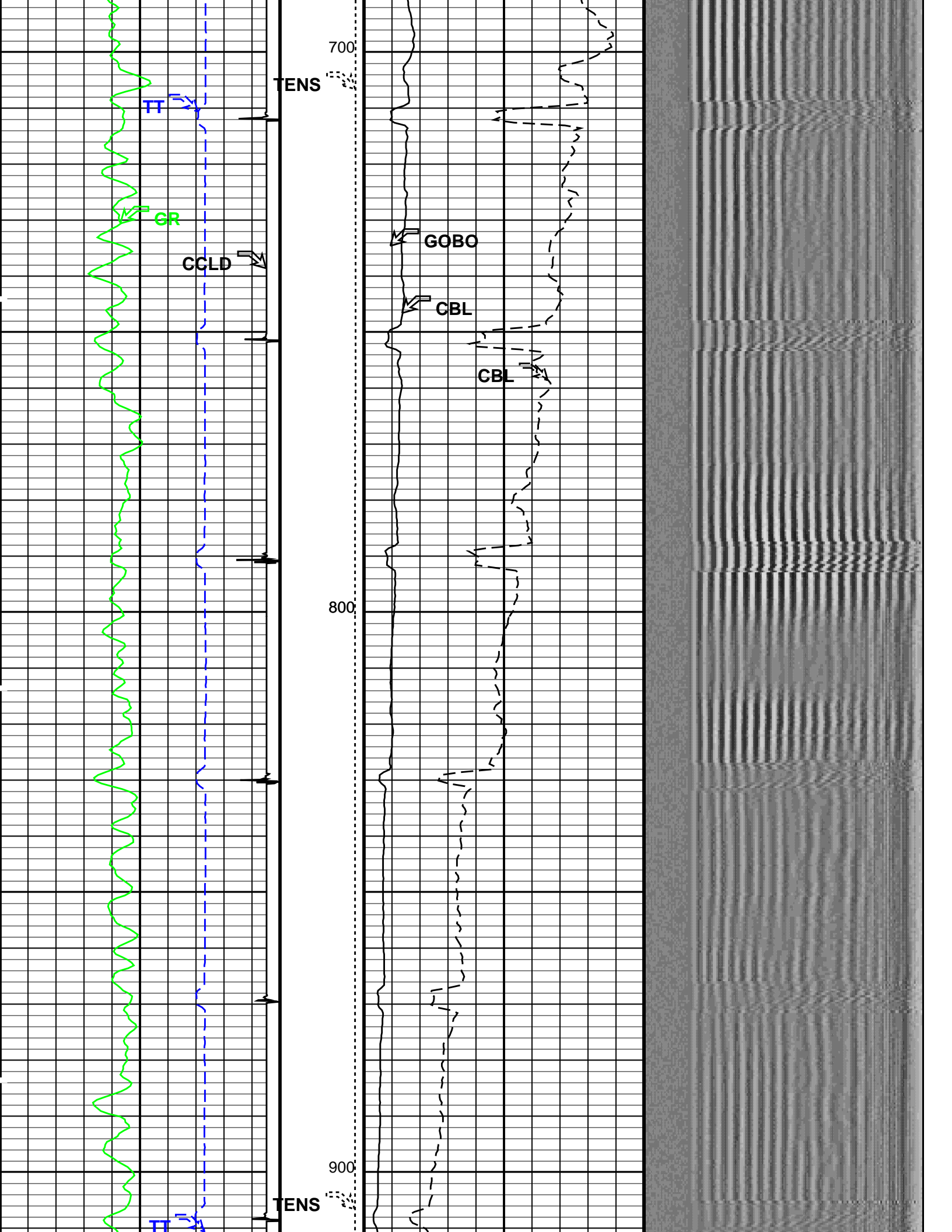
Time Mark Every 60 S

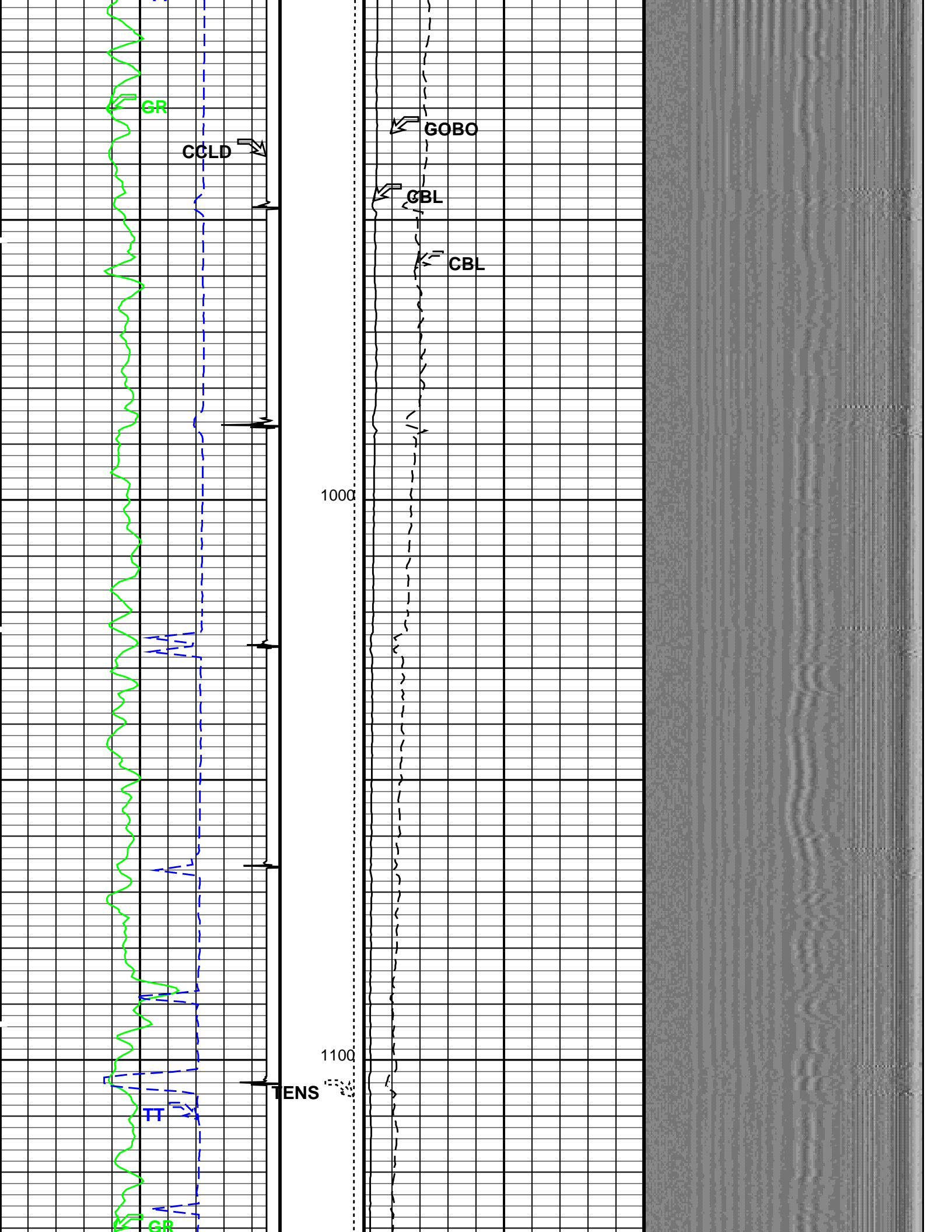


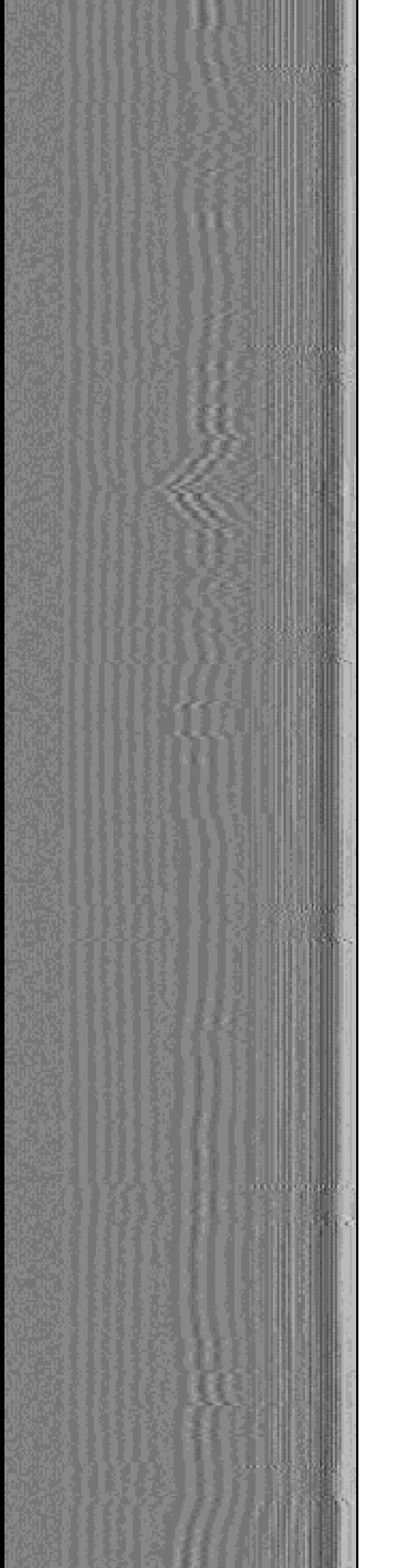
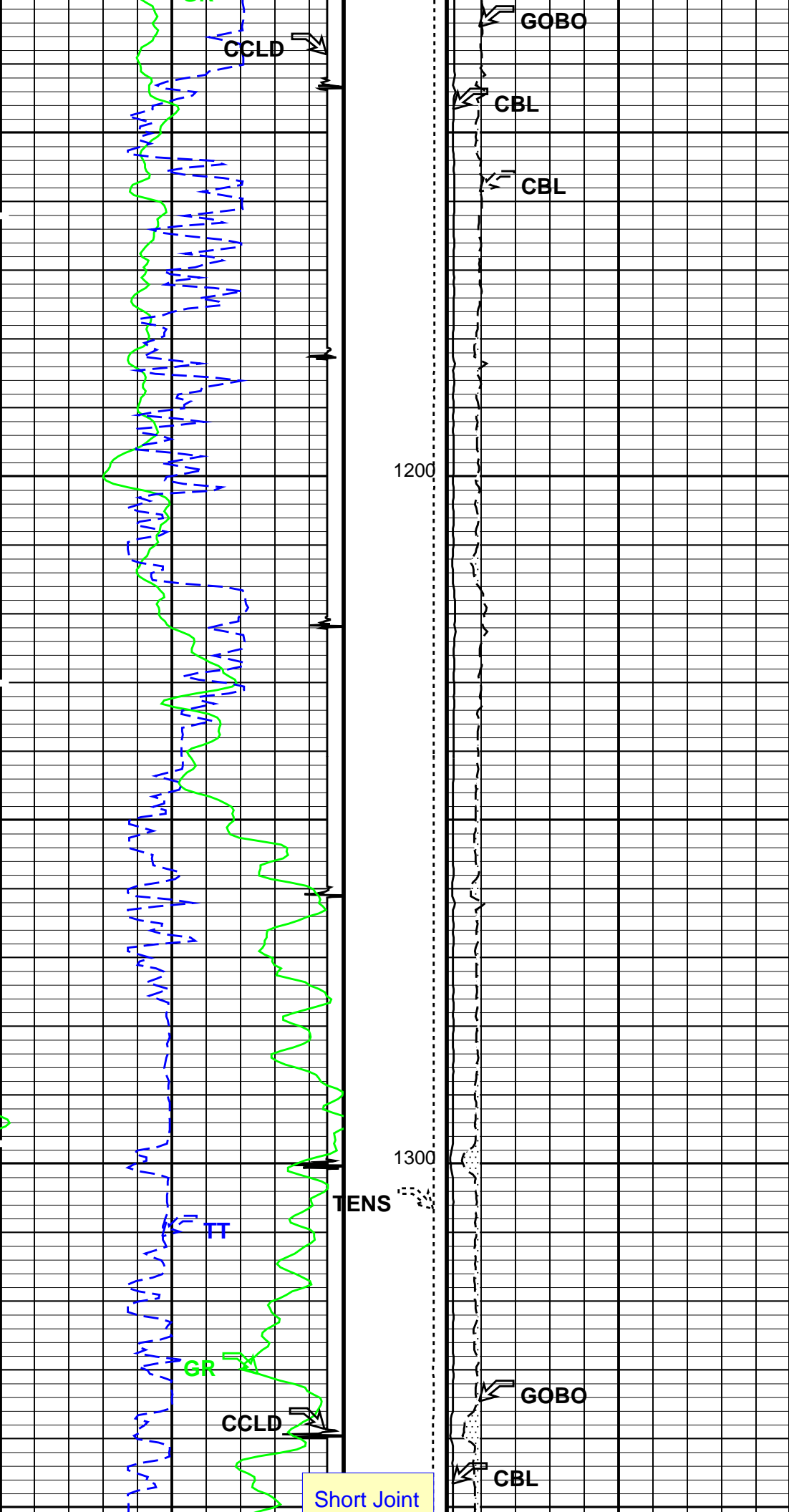


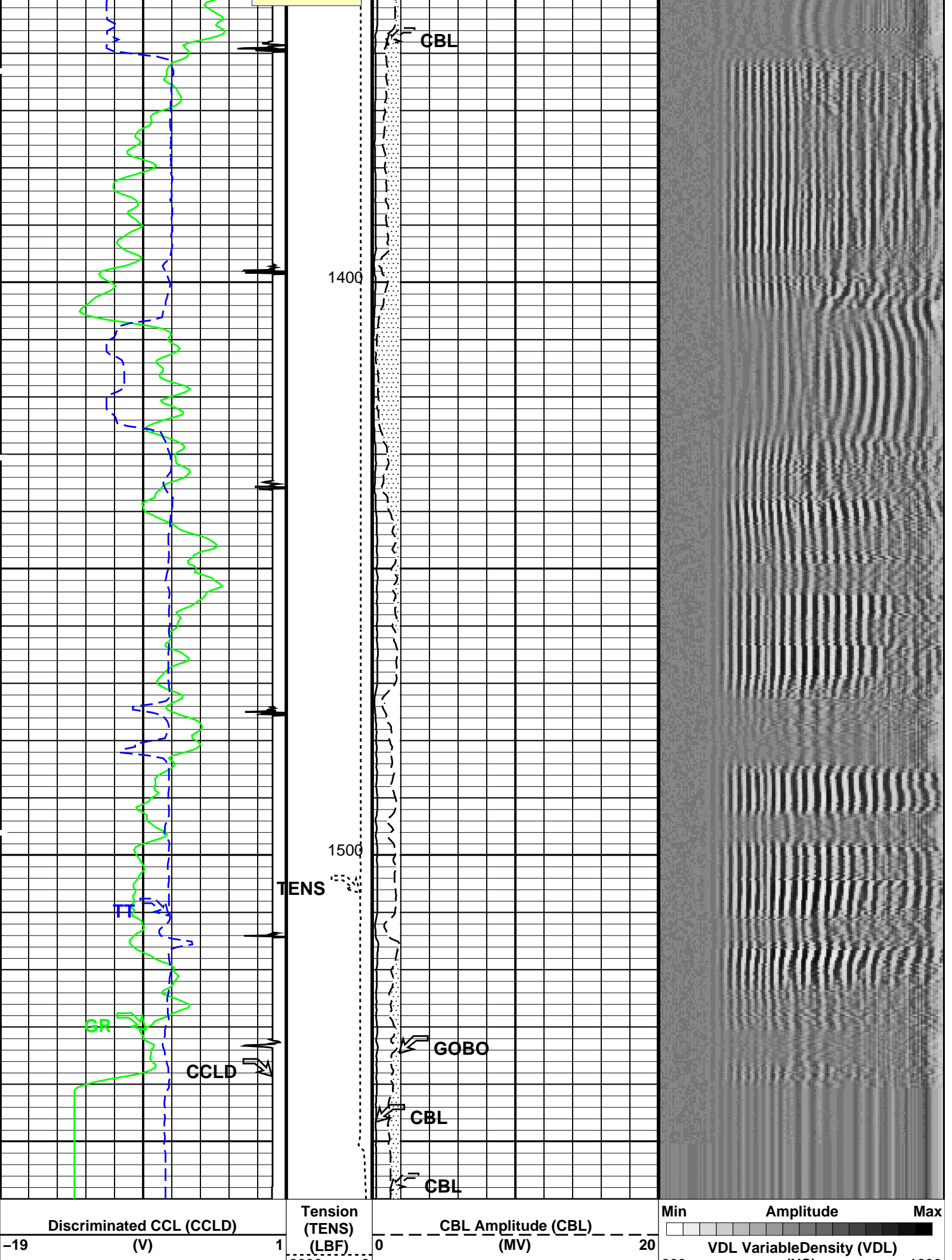












Gamma Ray (GR) (GAPI) 200	2000	0	200	1200
Transit Time (TT) (US) 400			200	
COLLARS From CCLD to T1				
		CBL Amplitude (CBL) (MV) 0 100		
		GOOD BOND From ACBL to GOBO		

PIP SUMMARY

Time Mark Every 60 S

Parameters

DLIS Name	Description	Value	
SCMT-CB: Slim Cement Mapping Tool, 1-11/16 OD			
BILI	Bond Index Level for Zone Isolation	0.8	
CB3D	SCMT CBL 3 ft Peak Detection Mode	PEAK	
CB3G	SCMT CBL 3 ft Peak Detection T0_Delay and Noise Gate	225.329	US
CB3T	SCMT CBL 3 ft Fixed Threshold Level	20	MV
CB5D	SCMT CBL 5 ft Peak Detection Mode	PEAK	
CB5G	SCMT CBL 5 ft Peak Detection T0_Delay and Noise Gate	339.329	US
CB5T	SCMT CBL 5 ft Fixed Threshold Level	20	MV
CBLG	CBL Gate Width	40	US
CBRA	CBL LQC Reference Amplitude in Free Pipe	79	MV
CMCF	CBL Cement Type Compensation Factor	1	
CMTC	SCMT Slow Channel Multiplexer Mode	SCAN	
CMTM	SCMT Operating Mode	LOG	
CSCS	SCMT Slow Channel Index	VCC	
CTHI	Casing Thickness	0.229988	IN
DTF	Delta-T Fluid	189	US/F
FATT	Acoustic Attenuation due to Fluid	0	DB/F
FCF	CBL Fluid Compensation Factor	0.924277	
GOBO	Good Bond	0.945006	MV
MAPD	SCMT MAP Peak Detection Mode	PEAK	
MAPG	SCMT MAP Peak Detection T0_Delay and Noise Gate	168.329	US
MAPT	SCMT MAP Fixed Threshold Level	30	MV
MATT	Maximum Attenuation	18.4392	DB/F
MCCF	MAP Cement Type Compensation Factor	1	
MCI	Minimum Cemented Interval for Isolation	10	FT
MMSA	MAP Minimum Sonic Amplitude	2.94385	MV
MSA	Minimum Sonic Amplitude	0.312526	MV
PEDE	Peak Detection On/Off Switch in Playback	OFF	
VDLG	VDL Manual Gain	5	
ZCMT	Acoustic Impedance of Cement	6.8	MRAY
System and Miscellaneous			
CSIZ	Current Casing Size	4.500	IN
CWEI	Casing Weight	10.50	LB/F
DFD	Drilling Fluid Density	8.40	LB/G
DO	Depth Offset for Playback	-0.5	FT
PP	Playback Processing	NORMAL	
TD	Total Depth	1601	FT

Format: CBL_VDL Vertical Scale: 5" per 100' Graphics File Created: 07-Sep-2011 08:31

OP System Version: 18C0-147

SCMT-CB HFE-4028-IFLEX PSPT HFE-4028-IFLEX

Input DLIS Files

DEFAULT SCMT_PSP_002LUP FN:1 PRODUCER 07-Sep-2011 08:01 1560.5 FT 3.0 FT

Output DLIS Files

DEFAULT SCMT_PSP_005PUP FN:4 PRODUCER 07-Sep-2011 08:31

Company: **Noble Energy, Inc.**

Schlumberger

Well: **Lampe 22-33B**

Field: **Cherry Creek Niobrara Gas Area**

Field: **Cherry Creek Niobrara Gas Area**
County: **Cheyenne**
State: **Kansas**

CBL – VDL
GR – CCL