



SUPERIOR
Hays,
Kansas

MICRO
LOG

Company DOWNING NELSON OIL COMPANY, INC.
Well SCHMEIDLER #9
Field HOMBURG
County TREGO
State KANSAS

Company DOWNING NELSON OIL COMPANY, INC.
Well SCHMEIDLER #9
Field HOMBURG
County TREGO State KANSAS

Location: API # : 15-195-22743-0000
1610' FNL & 730' FEL
NE-NW-SE-NE
SEC 14 TWP 31S RGE 21W
Permanent Datum GROUND LEVEL Elevation 2185
Log Measured From KELLY BUSHING & A.G.L.
Drilling Measured From KELLY BUSHING
Elevation
K.B. 2194
D.F. 2192
G.L. 2185

Date	12/10/11
Run Number	TWO
Depth Driller	3899
Depth Logger	3900
Bottom Logged Interval	3882
Top Log Interval	2900
Casing Driller	8 5/8" @ 222
Casing Logger	222
Bit Size	7 7/8
Type Fluid in Hole	CHEMICAL MUD
Density / Viscosity	9.0/52
pH / Fluid Loss	9.5/9.6
Source of Sample	FLOWLINE
Rim @ Meas. Temp	.70 @ 65F
Rmf @ Meas. Temp	.52 @ 65F
Rmc @ Meas. Temp	.84 @ 65F
Source of Rmf / Rmc	MEASURED
Rim @ BHT	.45 @ 115F
Time Circulation Stopped	2 HOURS
Time Logger on Bottom	
Maximum Recorded Temperature	115F
Equipment Number	680
Location	HAYS, KS.
Recorded By	JASON CAPPELLUCCI
Witnessed By	RON NELSON

<<< Fold Here >>>

All interpretations are opinions based on inferences from electrical or other measurements and we cannot and do not guarantee the accuracy or correctness of any interpretation, and we shall not, except in the case of gross or willful negligence on our part, be liable or responsible for any loss, costs, damages, or expenses incurred or sustained by anyone resulting from any interpretation made by any of our officers, agents or employees. These interpretations are also subject to our general terms and conditions set out in our current Price Schedule.

Comments

THANK YOU FOR USING SUPERIOR WELL SERVICE (785) 628-6395
DIRECTIONS
ELLIS, KS. -2 W. - 1 S. - 2 W. - 1/4 S. - W. INTO

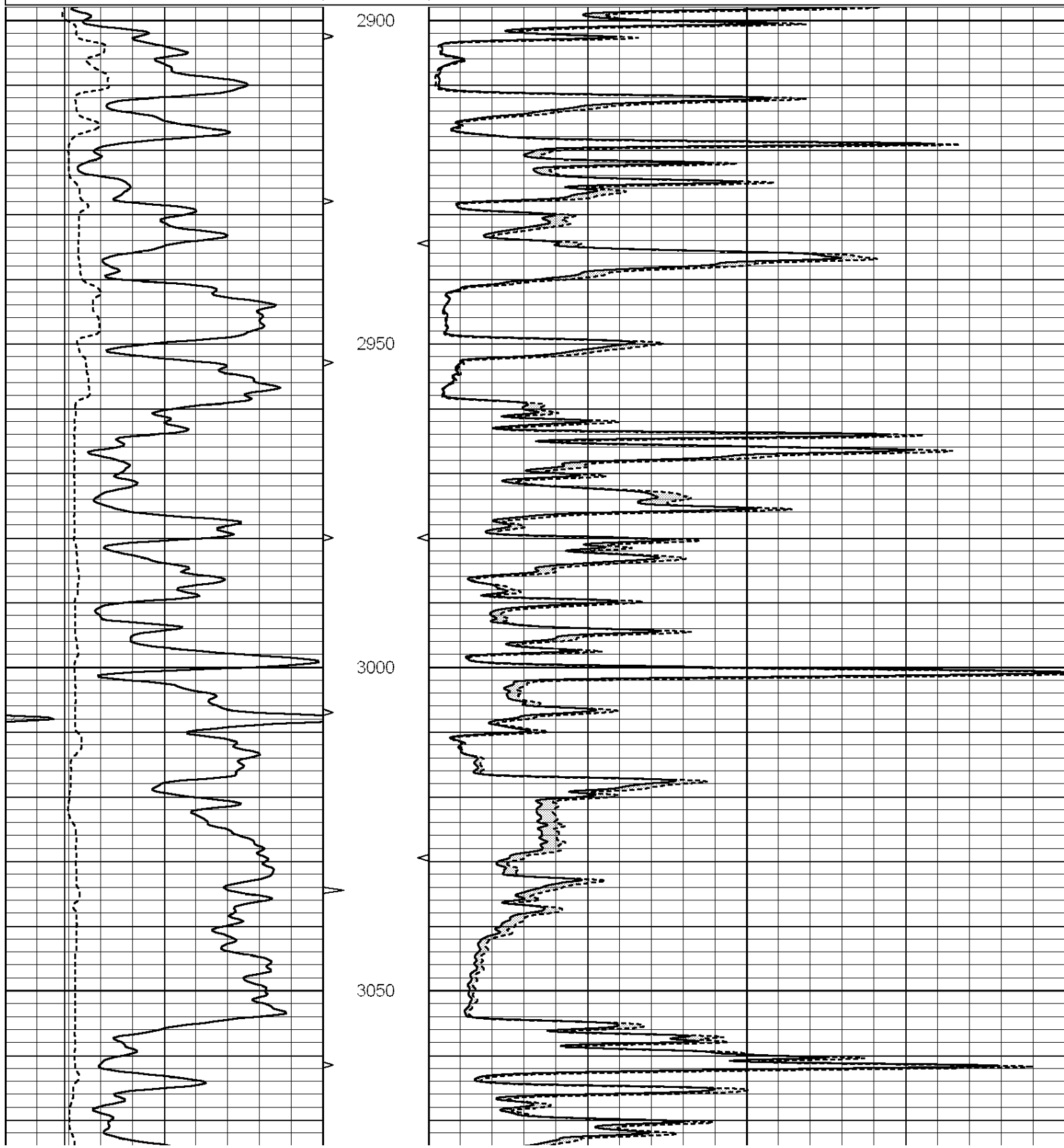


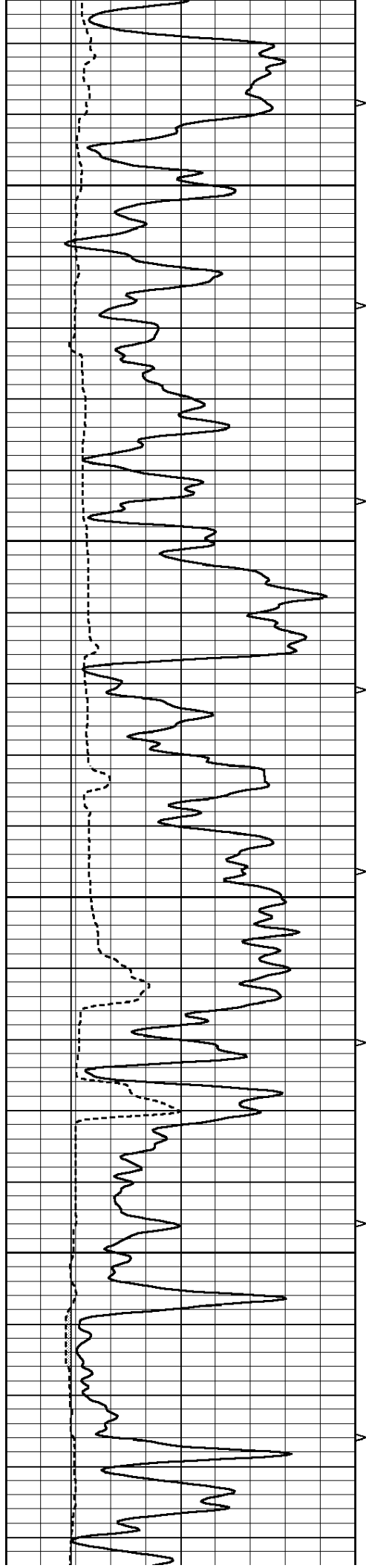
SUPERIOR
Hays,
Kansas

MAIN SECTION

Database File: 008100ddn.db
 Dataset Pathname: pass6.1
 Presentation Format: _micro
 Dataset Creation: Sat Dec 10 23:51:52 2011 by Calc Open-Cased 090629
 Charted by: Depth in Feet scaled 1:240

0	GAMMA RAY (GAPI)	150	ABHV	0	MEL1.5 (Ohm-m)	40
6	CALIPER (in)	16	10 (ft3)	0	MEL2.0 (Ohm-m)	40
			TBHV			
			0 (ft3)	10		



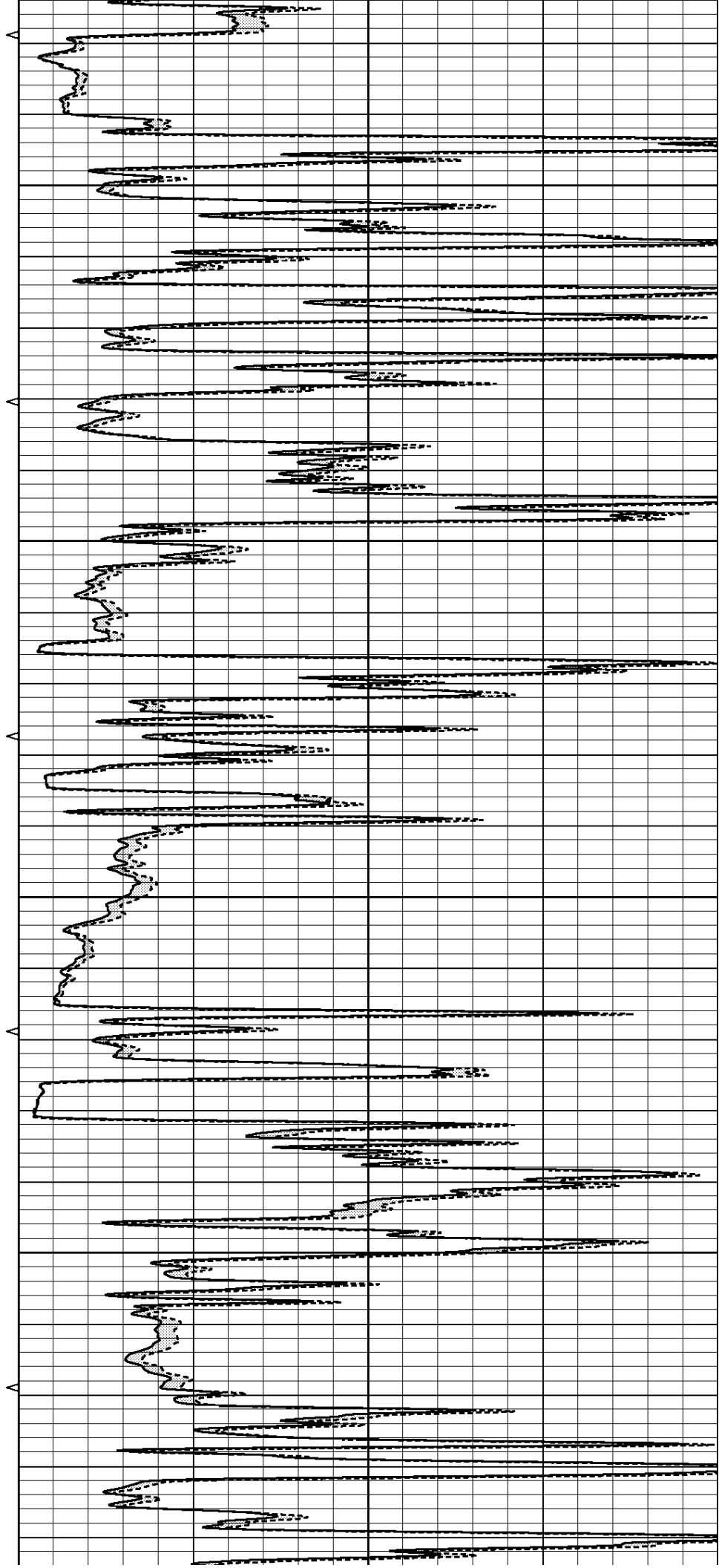


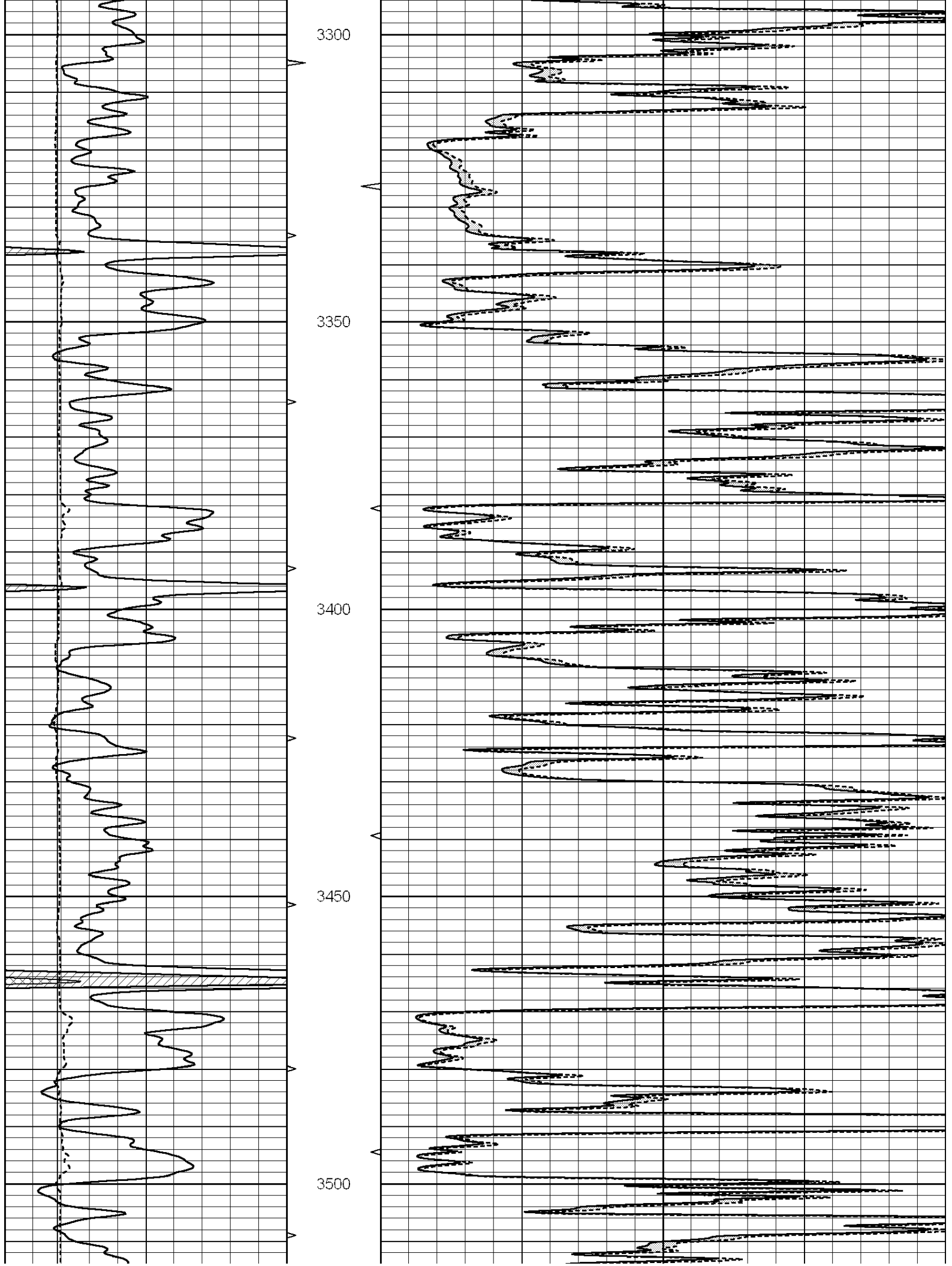
3100

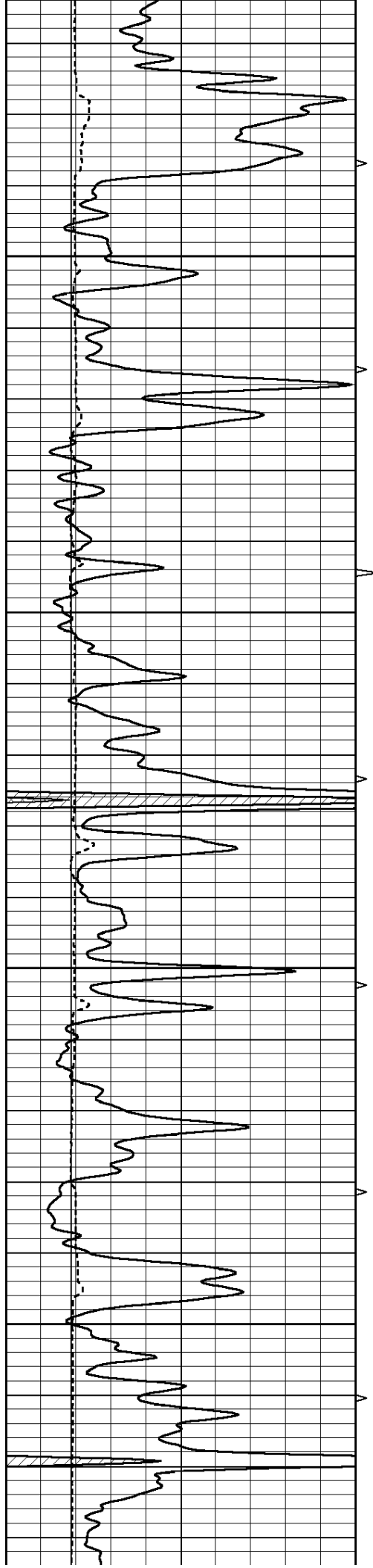
3150

3200

3250





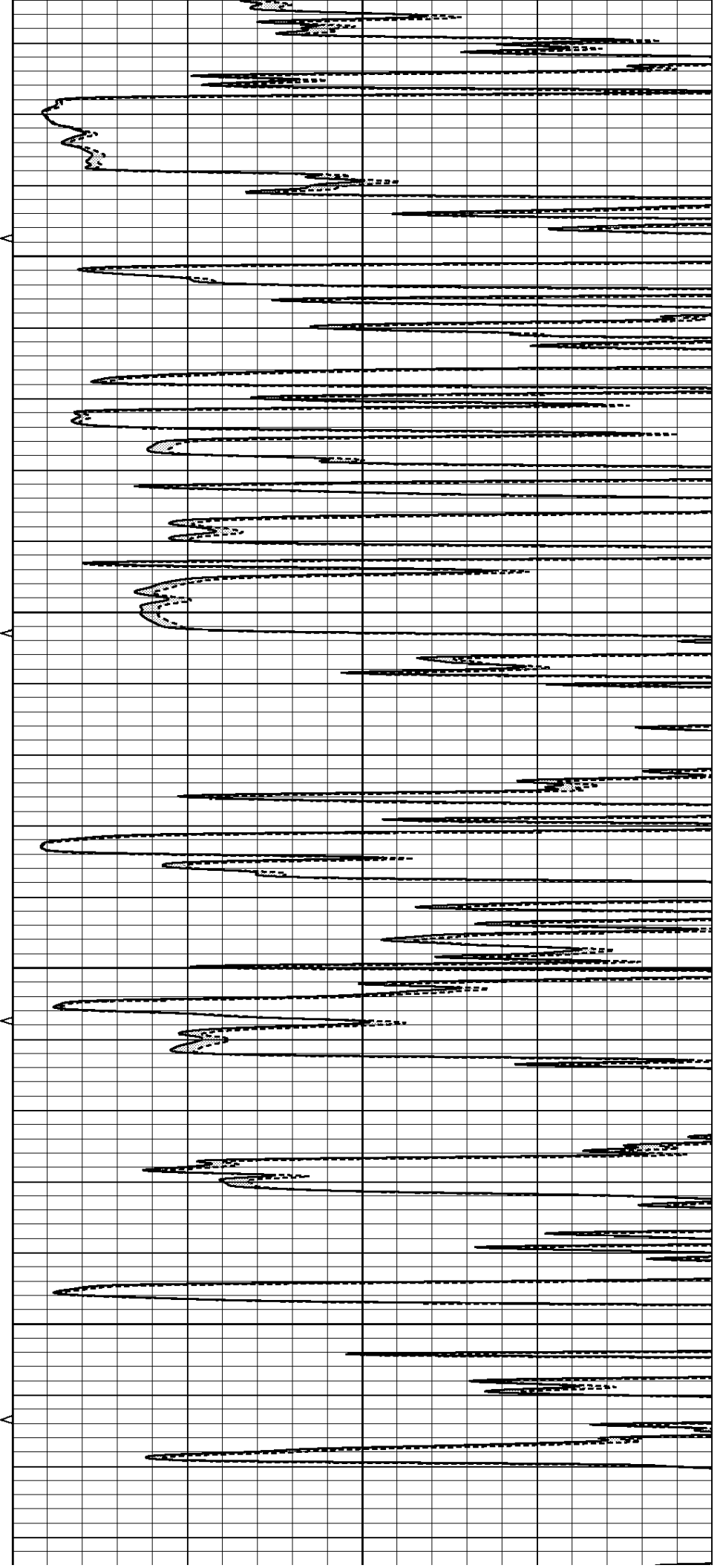


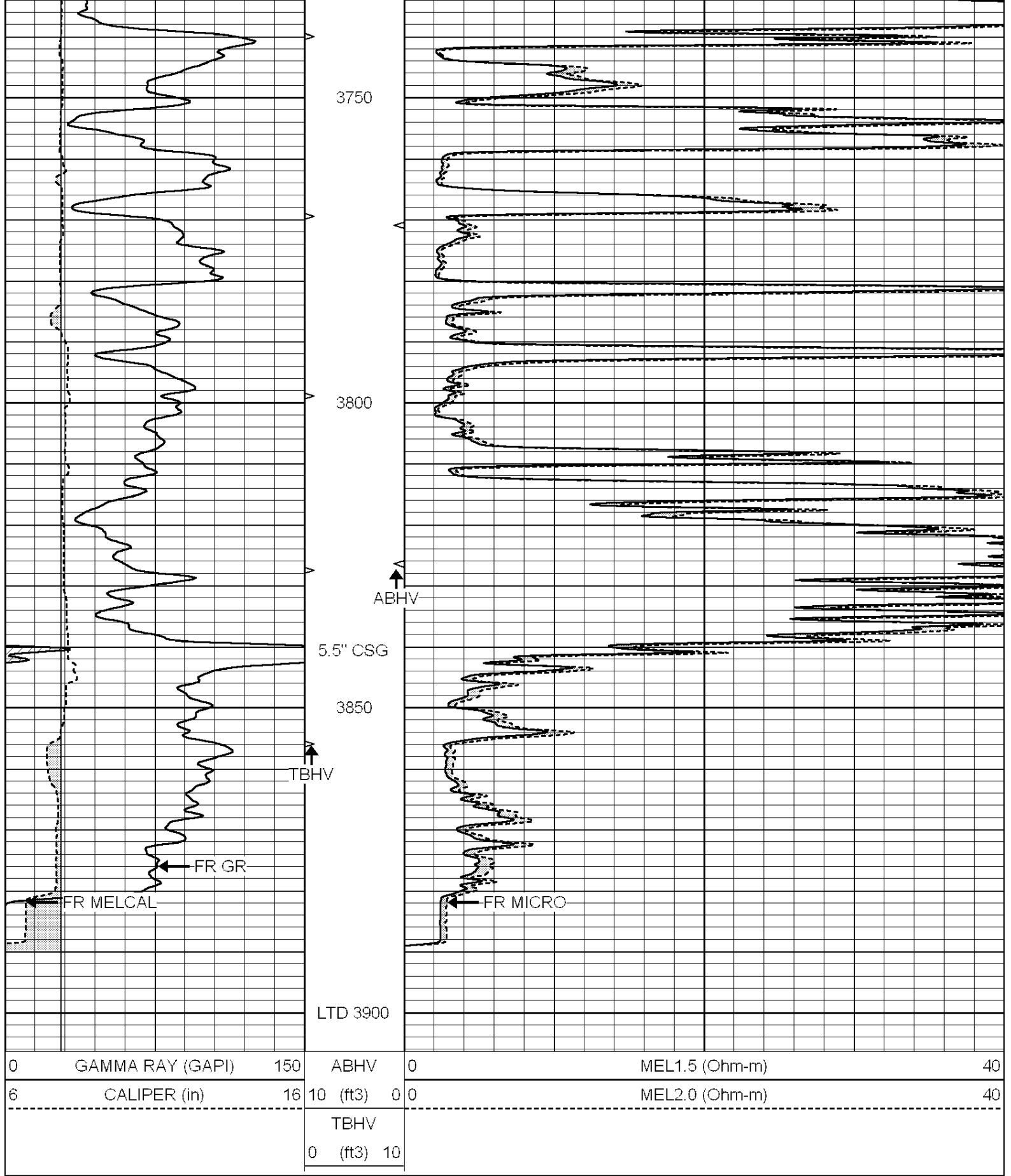
3550

3600

3650

3700



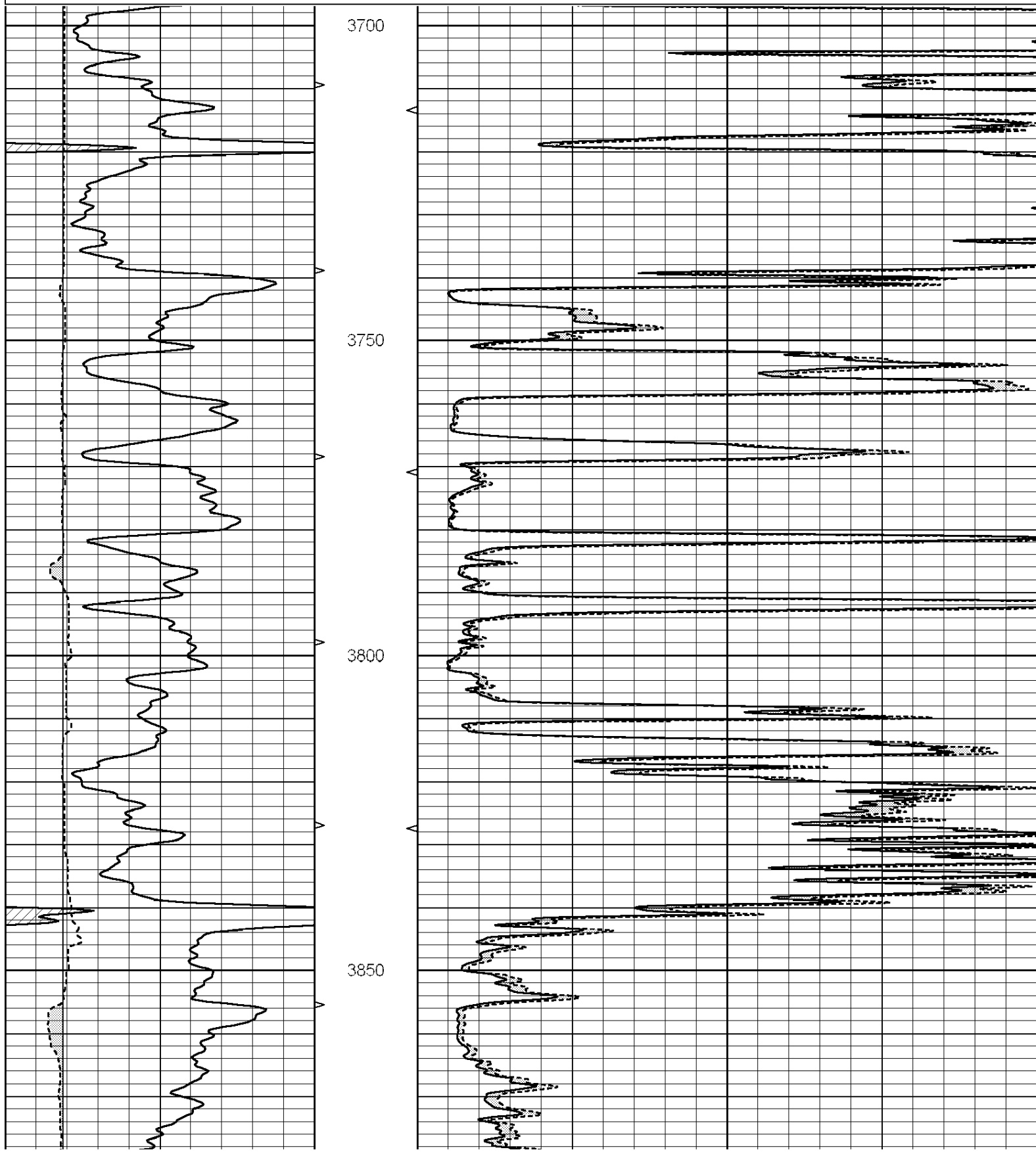


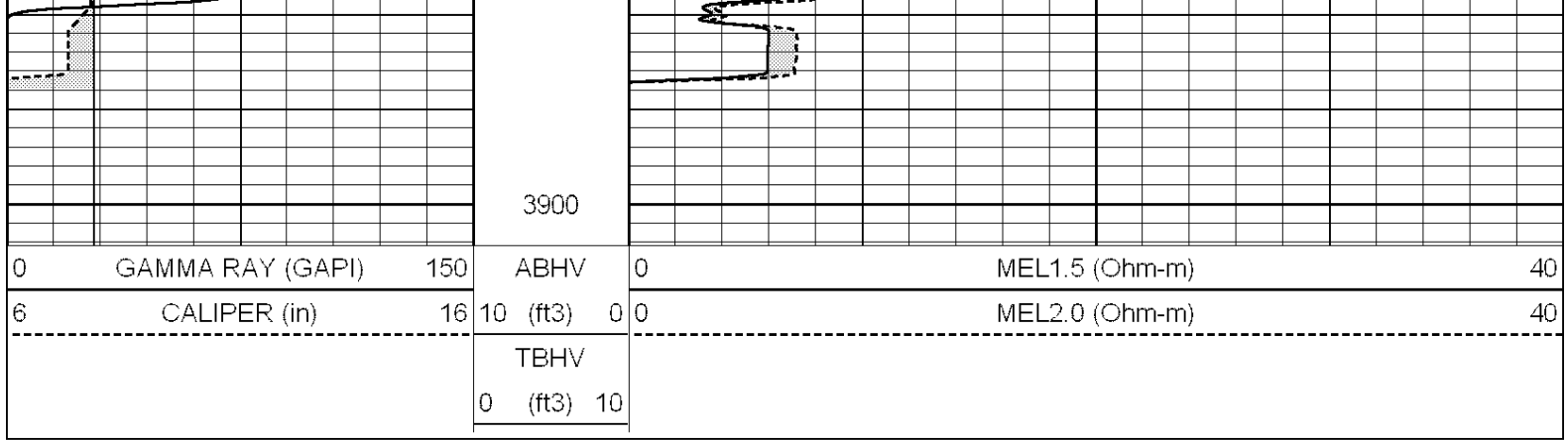
SUPERIOR
Hays,
Kansas

REPEAT SECTION

Database File: 008100ddn.db
 Dataset Pathname: pass5.2
 Presentation Format: _micro
 Dataset Creation: Sat Dec 10 23:55:11 2011 by Calc Open-Cased 090629
 Charted by: Depth in Feet scaled 1:240

0	GAMMA RAY (GAPI)	150	ABHV	0	MEL1.5 (Ohm-m)	40
6	CALIPER (in)	16	10 (ft3)	0 0	MEL2.0 (Ohm-m)	40
			TBHV			
			0 (ft3)	10		





Calibration Report

Database File: 008100ddn.db
 Dataset Pathname: pass5.2
 Dataset Creation: Sat Dec 10 23:55:11 2011 by Calc Open-Cased 090629

MICRO Calibration Report

Serial Number: MICRO6
 Tool Model: PROBE
 Performed: Sun Nov 20 13:54:16 2011

Caliper Calibration: Gain=5.211 Offset=0.060

References	Low Cal	High Cal
Readings	8.000	14.000
	1.178	2.330

1.5" Calibration: Gain=30.075 Offset=-0.650

References	Low Cal	High Cal
Readings	0.000	20.000
	0.004	1.196

2" Calibration: Gain=80.041 Offset=-1.600

References	Low Cal	High Cal
Readings	0.000	20.000
	0.006	0.913

Gamma Ray Calibration Report

Serial Number: #8
 Tool Model: OPEN
 Performed: Mon Jun 13 16:56:43 2011

Calibrator Value: 150.0 GAPI

Background Reading:	0.0	cps
Calibrator Reading:	175.0	cps

Sensitivity: 0.8371 GAPI/cps