



Dual Induction Log

DIGITAL LOG (785) 625-3858

API No.	15-051-26190-00-00	
Company	TDL, Inc.	
Well	Charlotte No. 1	
Field	Wildcat	
County	Ellis	State
		Kansas
Location	NW - SE - SE - SE 430' FSL & 655' FEL	
Sec: 15	Twp: 15 S	Rge: 19 W
Other Services	CNL/CDL	

Permanent Datum	Ground Level	Elevation 1994
Log Measured From	Kelly Bushing	10 Ft. Above Perm. Datum
Drilling Measured From	Kelly Bushing	
Date	10/14/2011	
Run Number	One	
Depth Driller	3680	
Depth Logger	3681	
Bottom Logged Interval	3680	
Top Log Interval	1200	
Casing Driller	8.615 @ 1202	
Casing Logger	1204	
Bit Size	7.875	
Type Fluid in Hole	Chemical	
Salinity, ppm CL	4000	
Density / Viscosity	8.8	48
pH / Fluid Loss	10.5	5.4
Source of Sample	Flowline	
Rm @ Meas. Temp	1.10 @ 60	
Rmf @ Meas. Temp	0.83 @ 60	
Rmc @ Meas. Temp	1.49 @ 60	
Source of Rmf / Rmc	Charts	
Rm @ BHT	0.59 @ 113	
Operating Rig Time	2-1/2 Hours	
Max Rec. Temp. F	113	
Equipment Number	17	
Location	Hays	
Recorded By	B. Becker	
Witnessed By	Tom Denning	
		Herb Deines

<<< Fold Here >>>

All interpretations are opinions based on inferences from electrical or other measurements and we cannot and do not guarantee the accuracy or correctness of any interpretation, and we shall not, except in the case of gross or willful negligence on our part, be liable or responsible for any loss, costs, damages, or expenses incurred or sustained by anyone resulting from any interpretation made by any of our officers, agents or employees. These interpretations are also subject to our general terms and conditions set out in our current Price Schedule.

Comments

Thank you for using Log-Tech, Inc.
 (785) 625-3858

Antonino, Ks; 3 South; 1-1/8 West;
 North into location

Database File: tdihd.db
 Dataset Pathname: DIL/tdistk
 Presentation Format: dil2in
 Dataset Creation: Fri Oct 14 07:34:48 2011
 Charted by: Depth in Feet scaled 1:600

0 Gamma Ray 150
-200 SP 0

0 Shallow Resistivity 50
0 Deep Resistivity 50

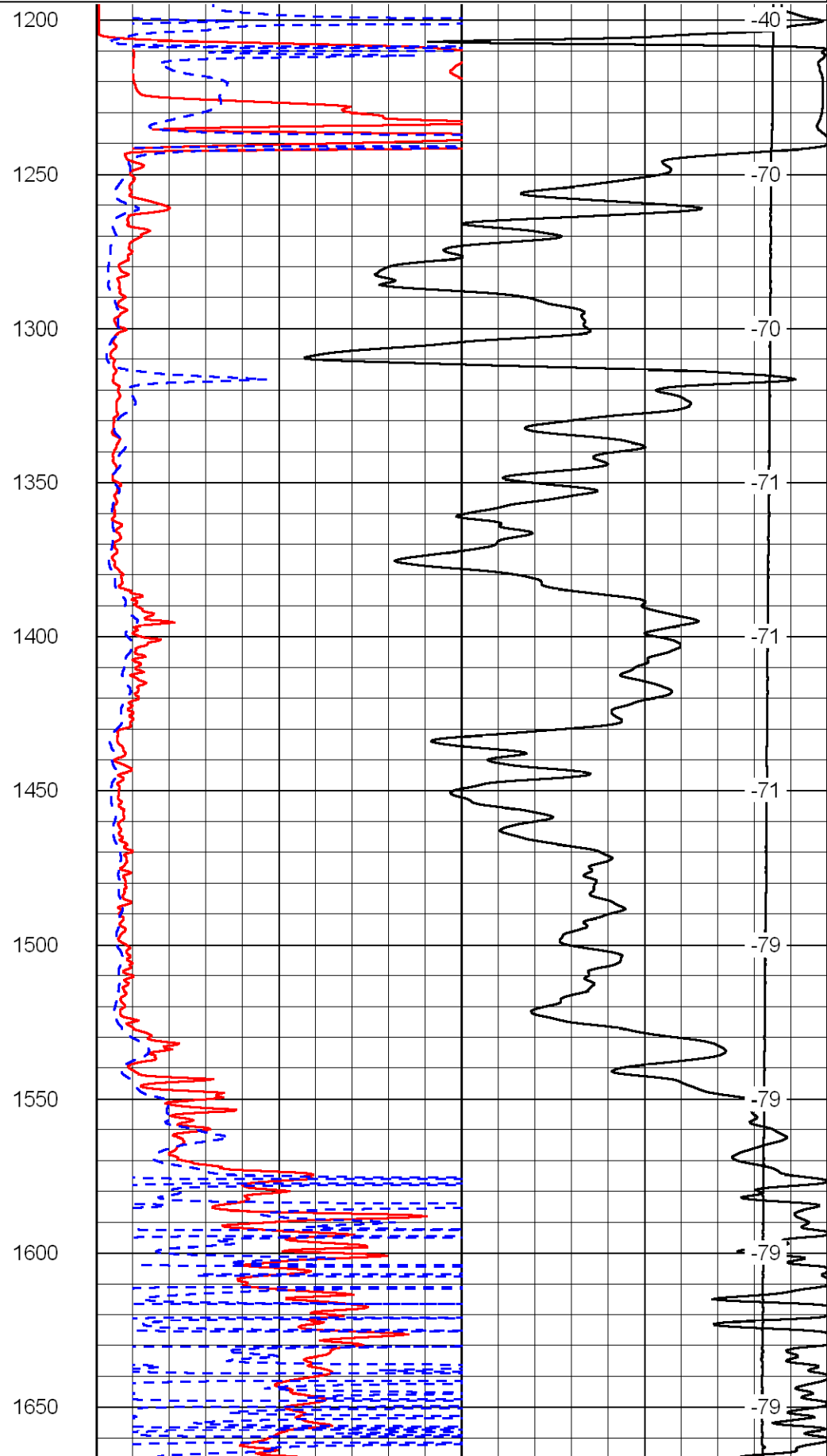
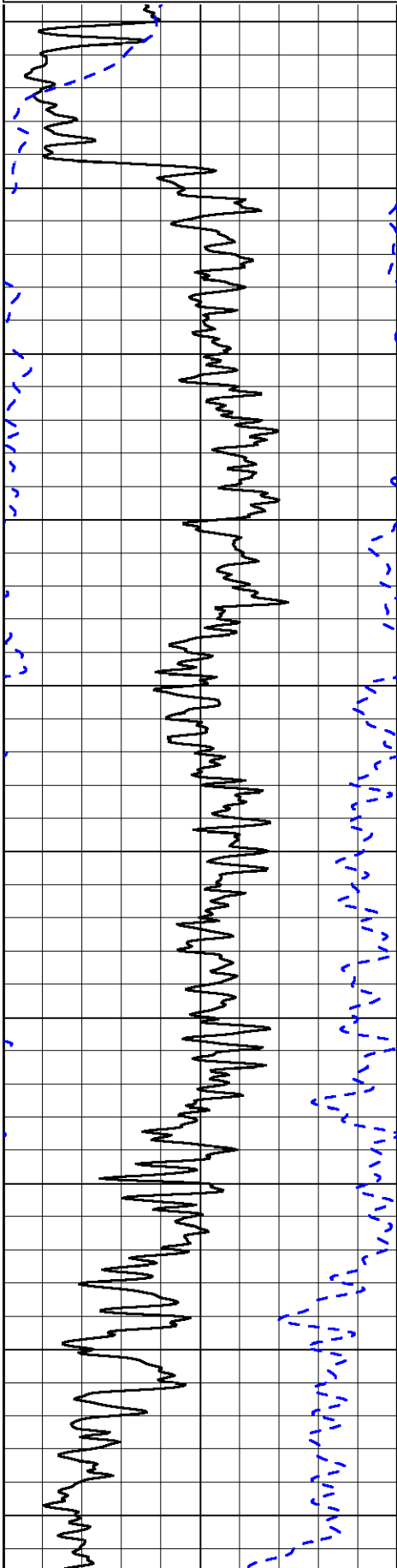
LSPD

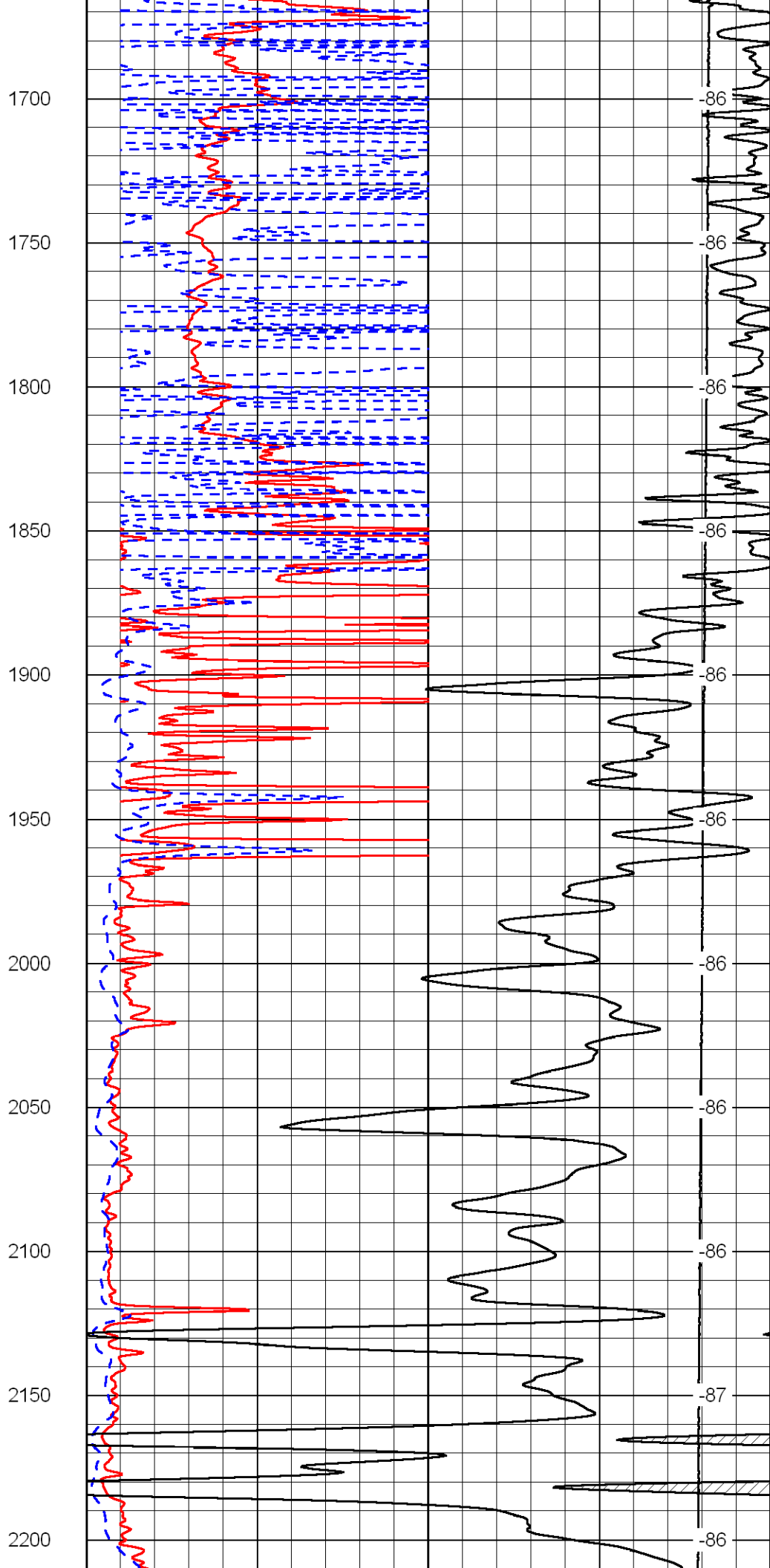
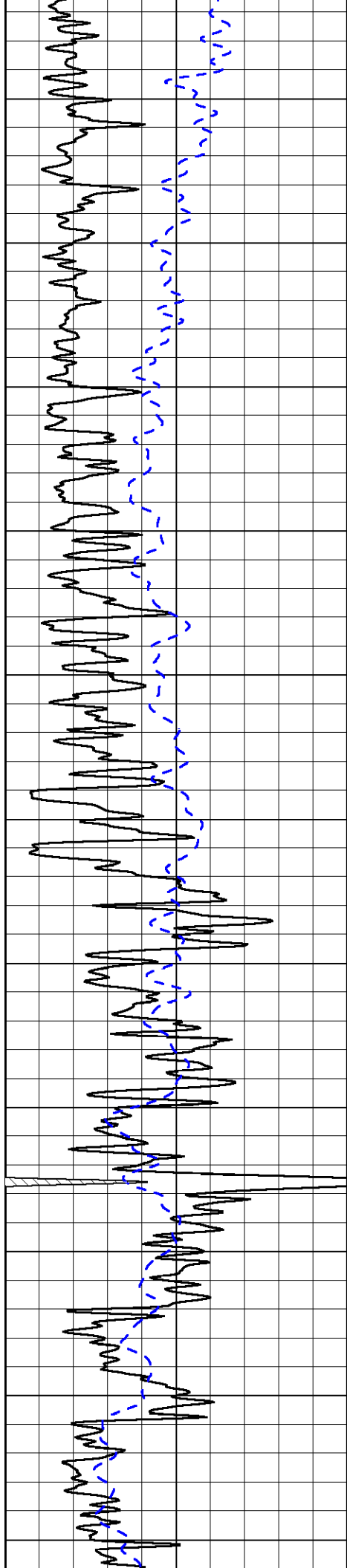
1000 Conductivity 0

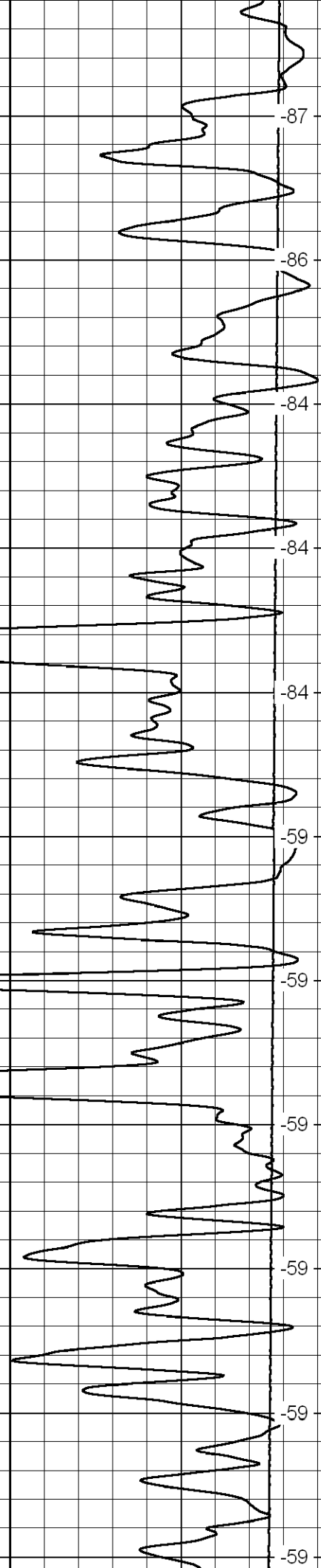
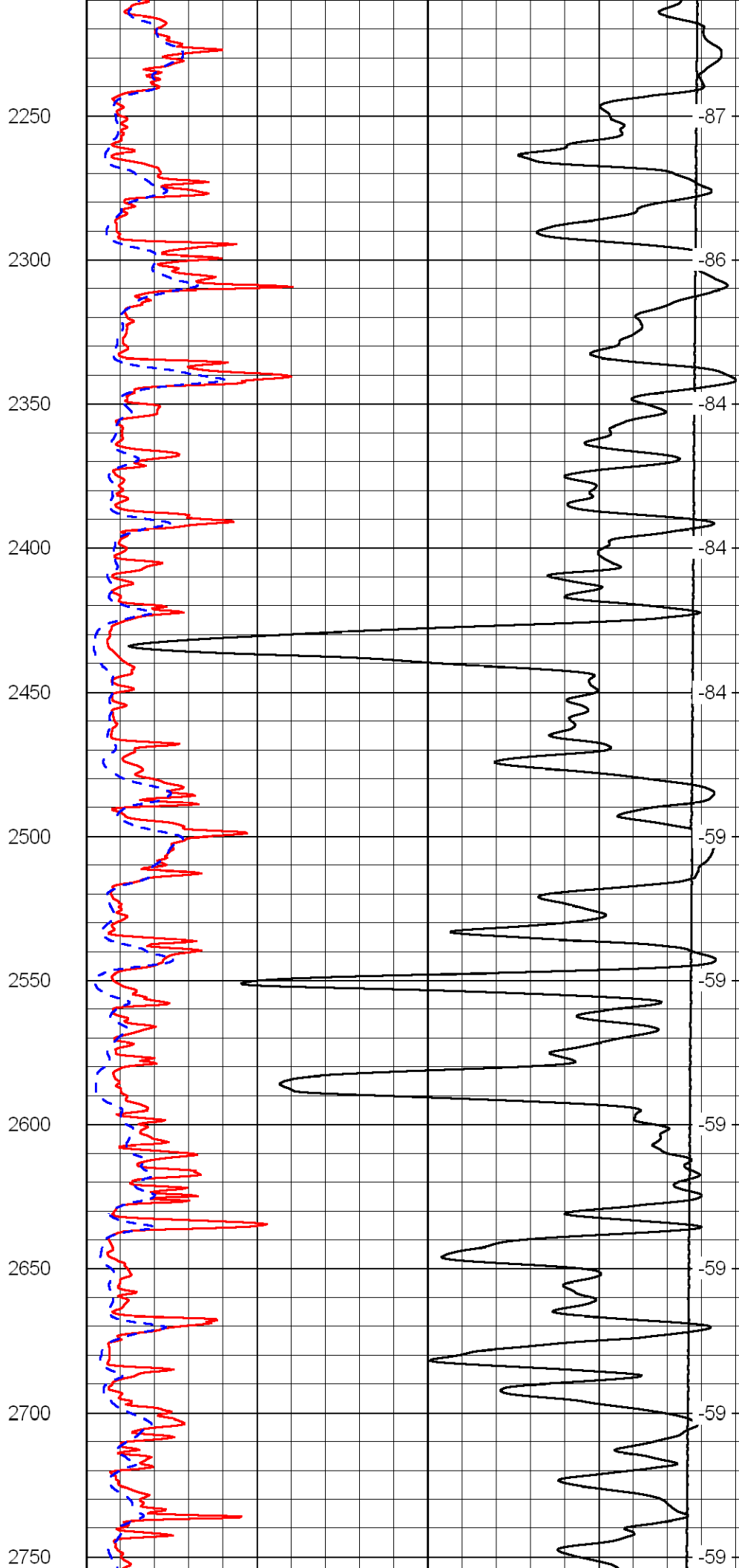
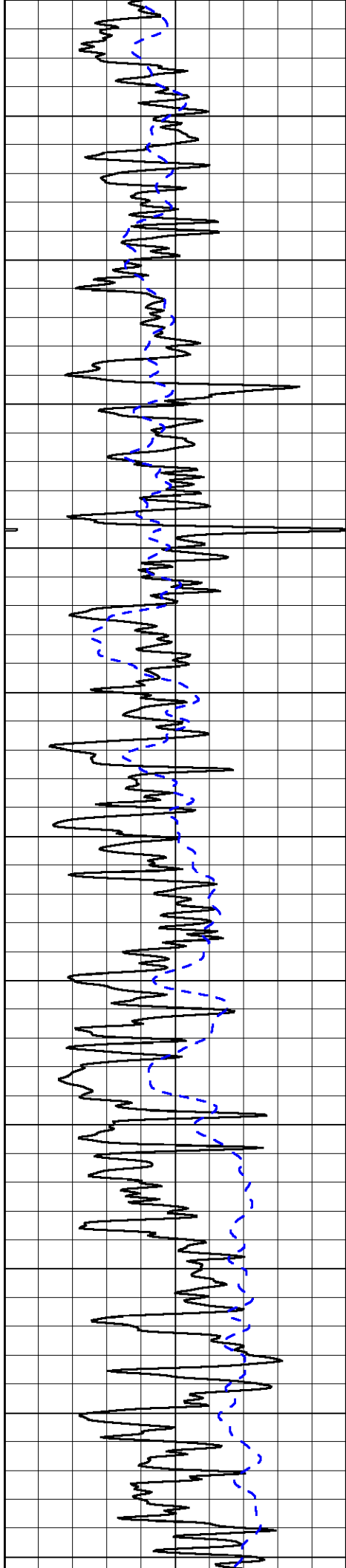
15000 Line Tension 0

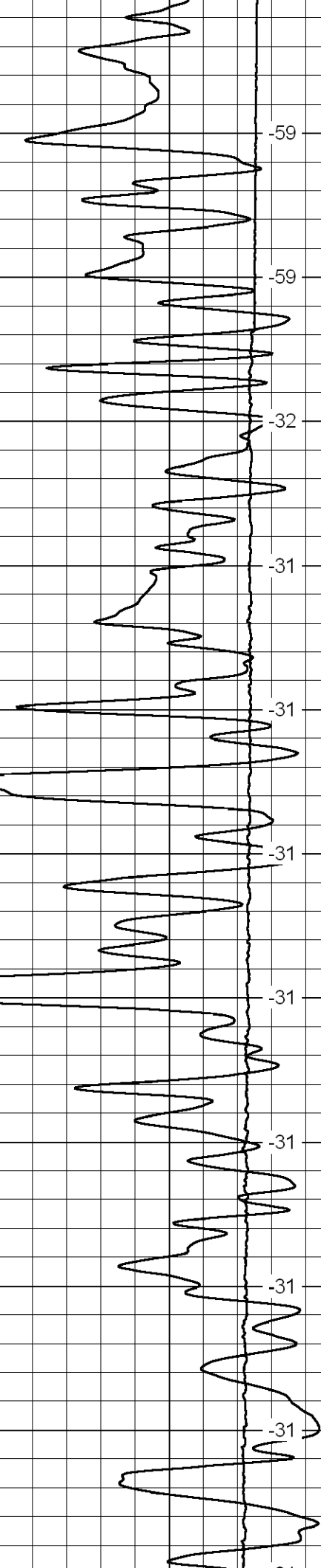
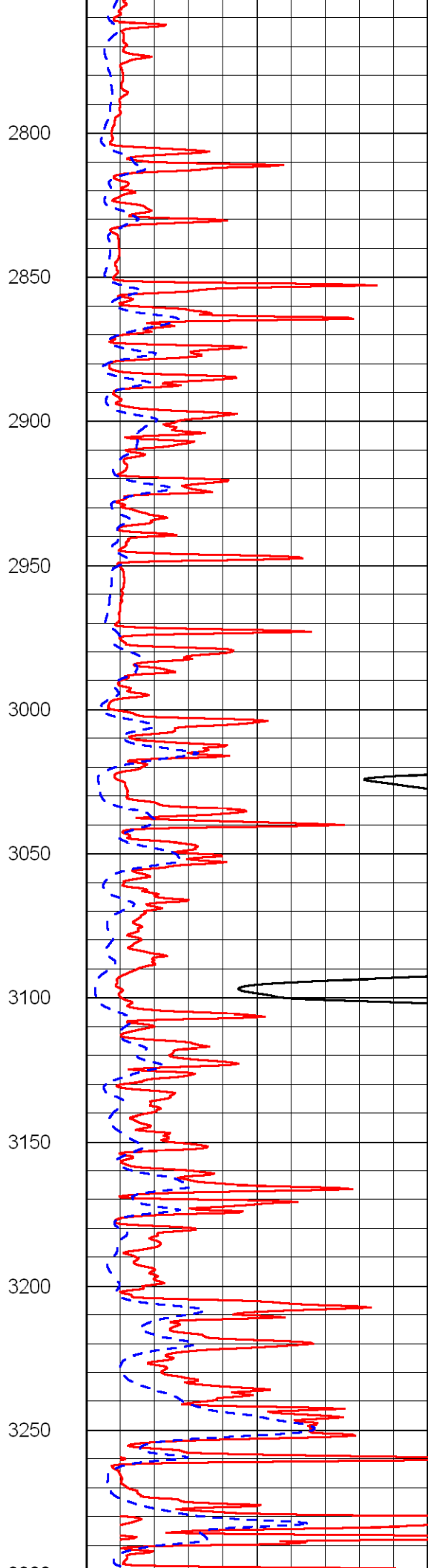
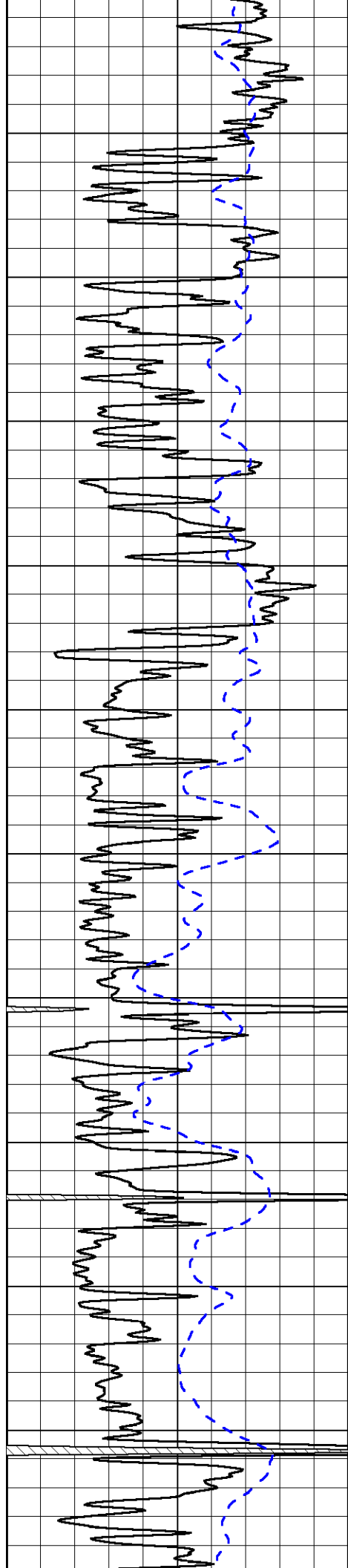
50 Shallow Resistivity 500

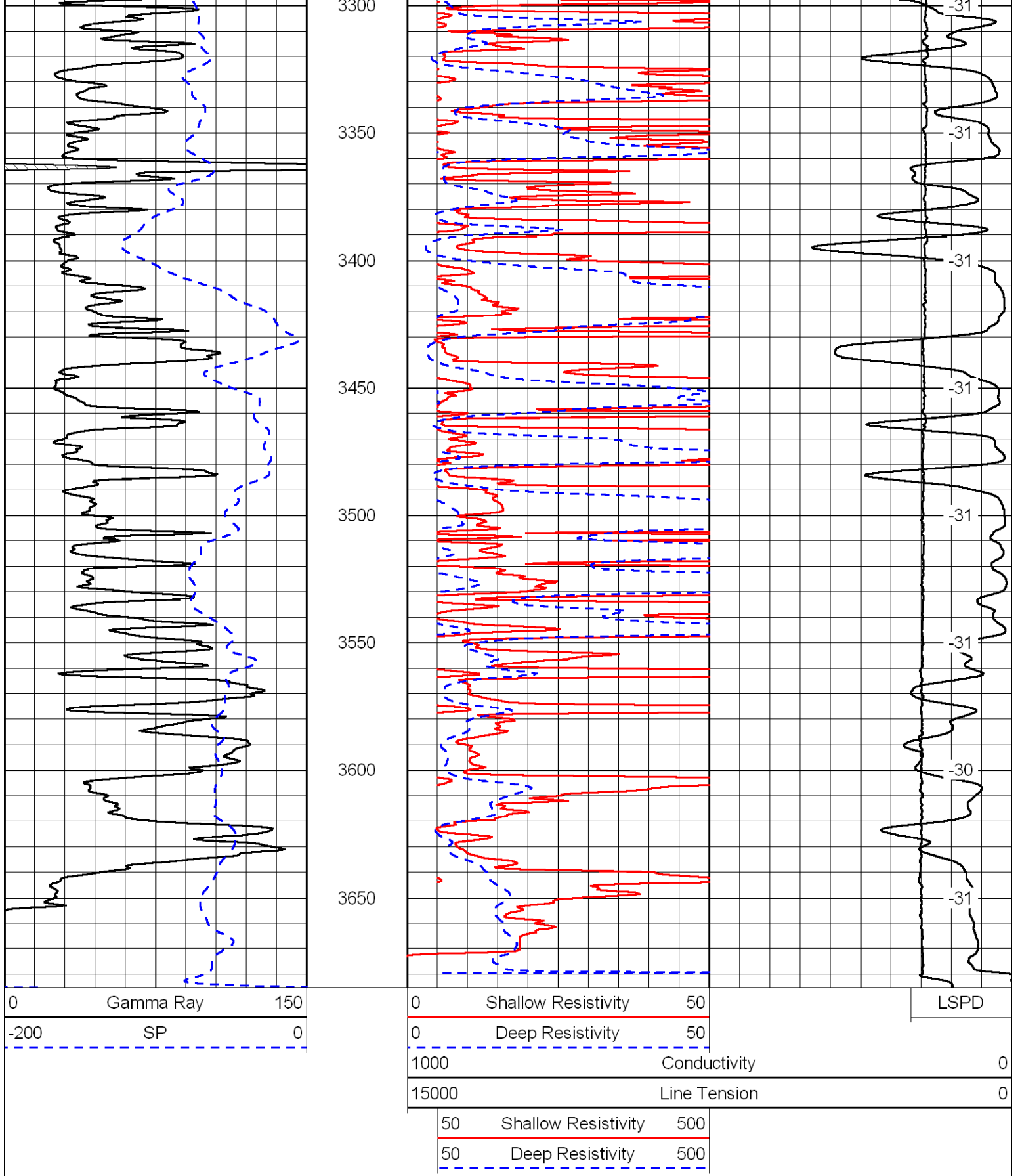
50 Deep Resistivity 500



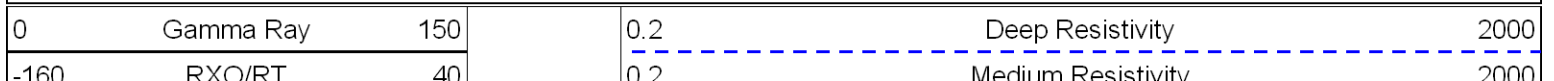








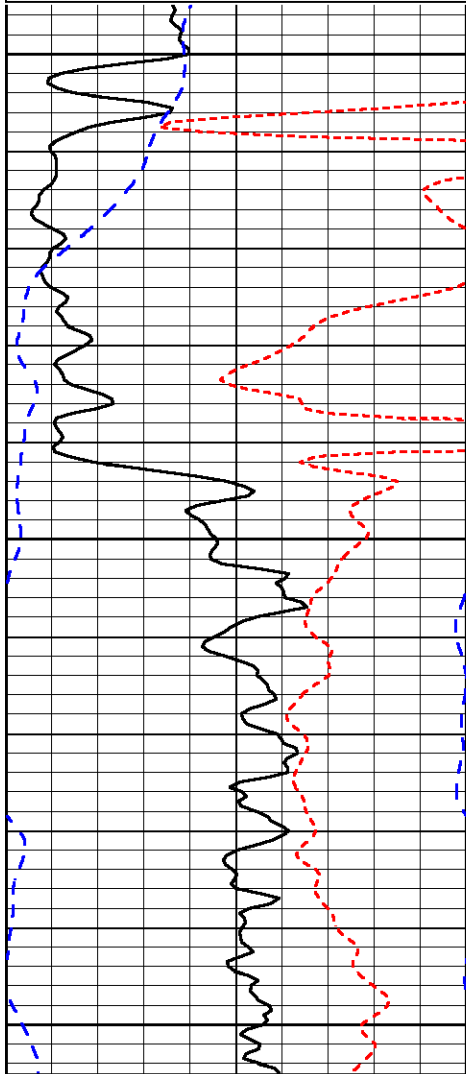
Database File: tdihd.db
 Dataset Pathname: DIL/tdistk
 Presentation Format: dil
 Dataset Creation: Fri Oct 14 07:34:48 2011
 Charted by: Depth in Feet scaled 1:240



100 RXO/RT 15
 -200 SP 0

0.2 Medium Resistivity 2000
 10000 Shallow Resistivity 0

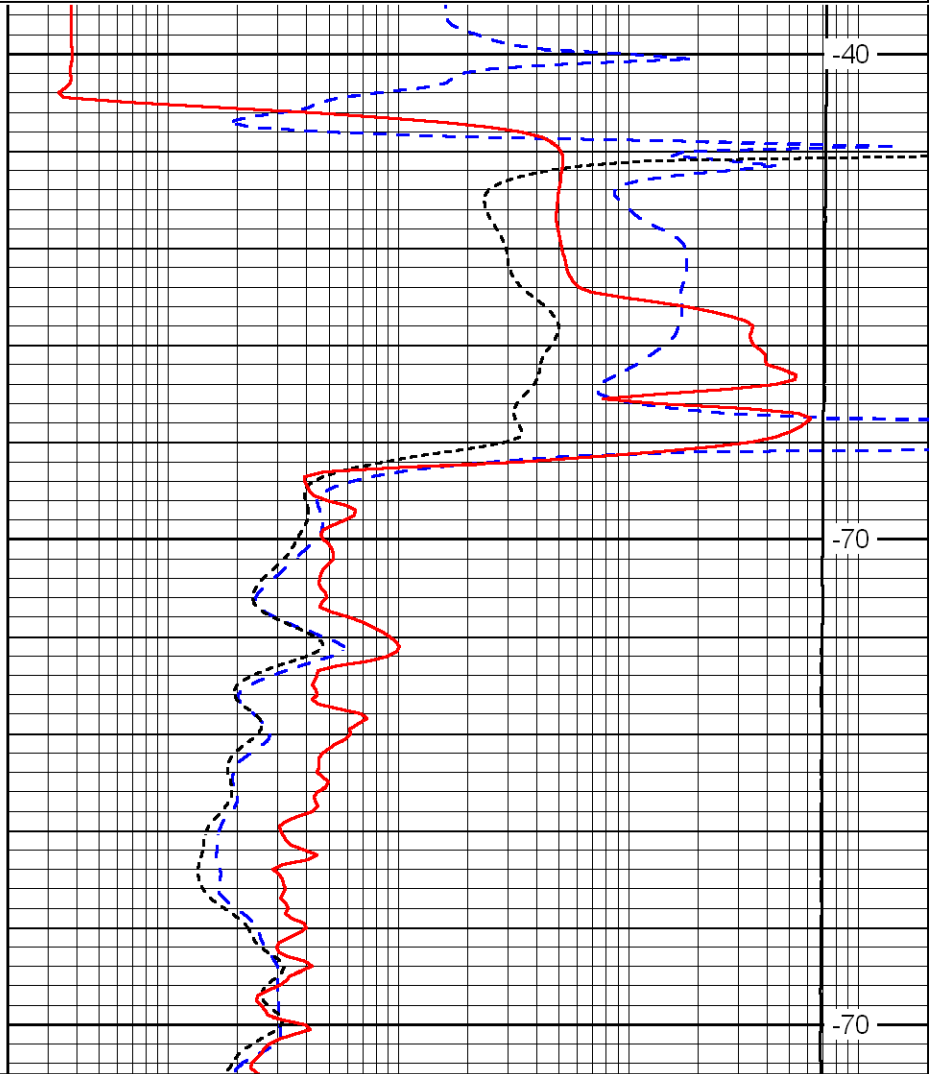
LSPD



1200

1250

1300



-40

-70

-70

0 Gamma Ray 150
 -160 RXO/RT 40
 -200 SP 0

0.2 Deep Resistivity 2000
 0.2 Medium Resistivity 2000
 0.2 Shallow Resistivity 2000
 10000 Line Tension 0

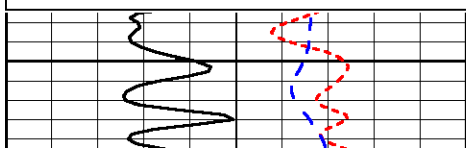
LSPD

Database File: tdihd.db
 Dataset Pathname: DIL/tdistk
 Presentation Format: dil
 Dataset Creation: Fri Oct 14 07:34:48 2011
 Charted by: Depth in Feet scaled 1:240

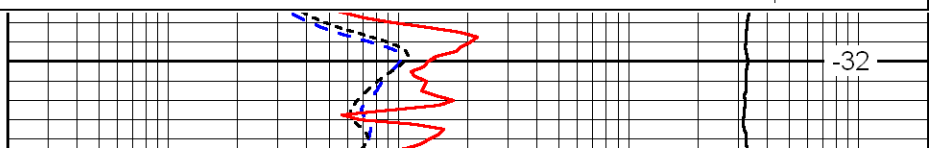
0 Gamma Ray 150
 -160 RXO/RT 40
 -200 SP 0

0.2 Deep Resistivity 2000
 0.2 Medium Resistivity 2000
 0.2 Shallow Resistivity 2000
 10000 Line Tension 0

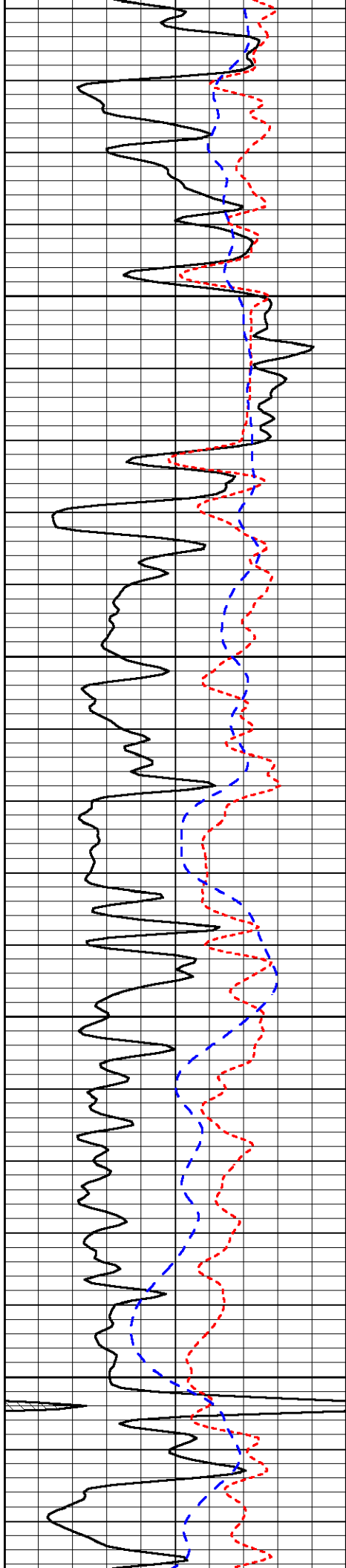
LSPD



2900



-32

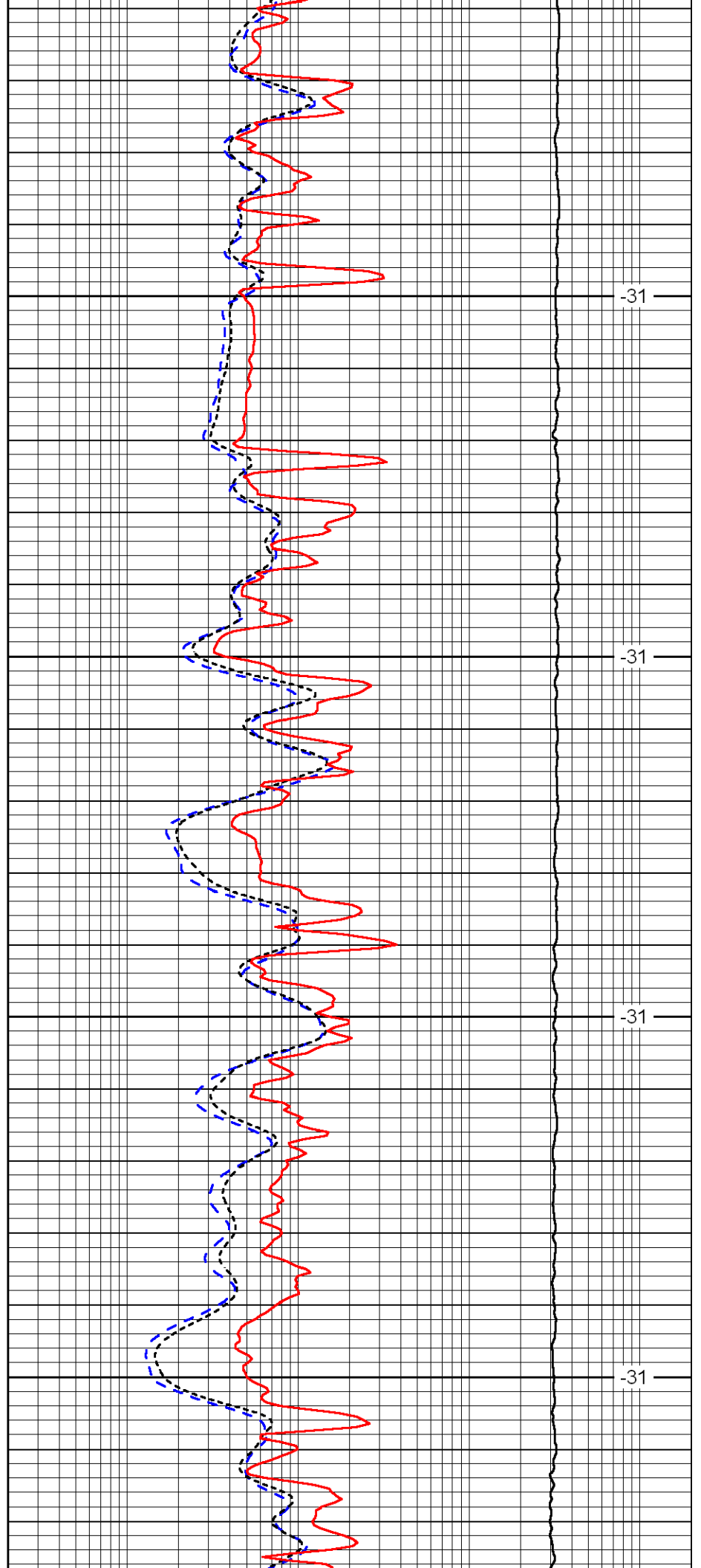


2950

3000

3050

3100

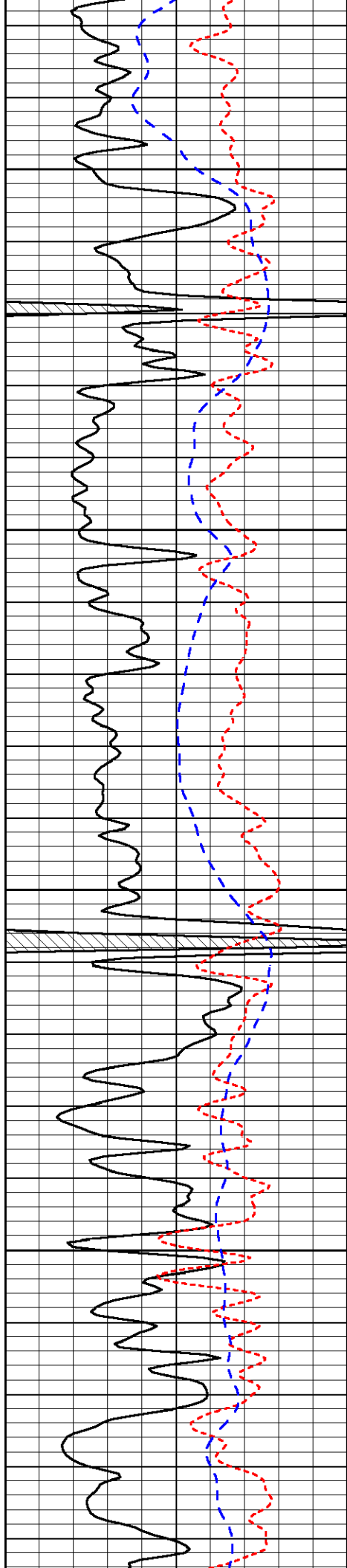


-31

-31

-31

-31

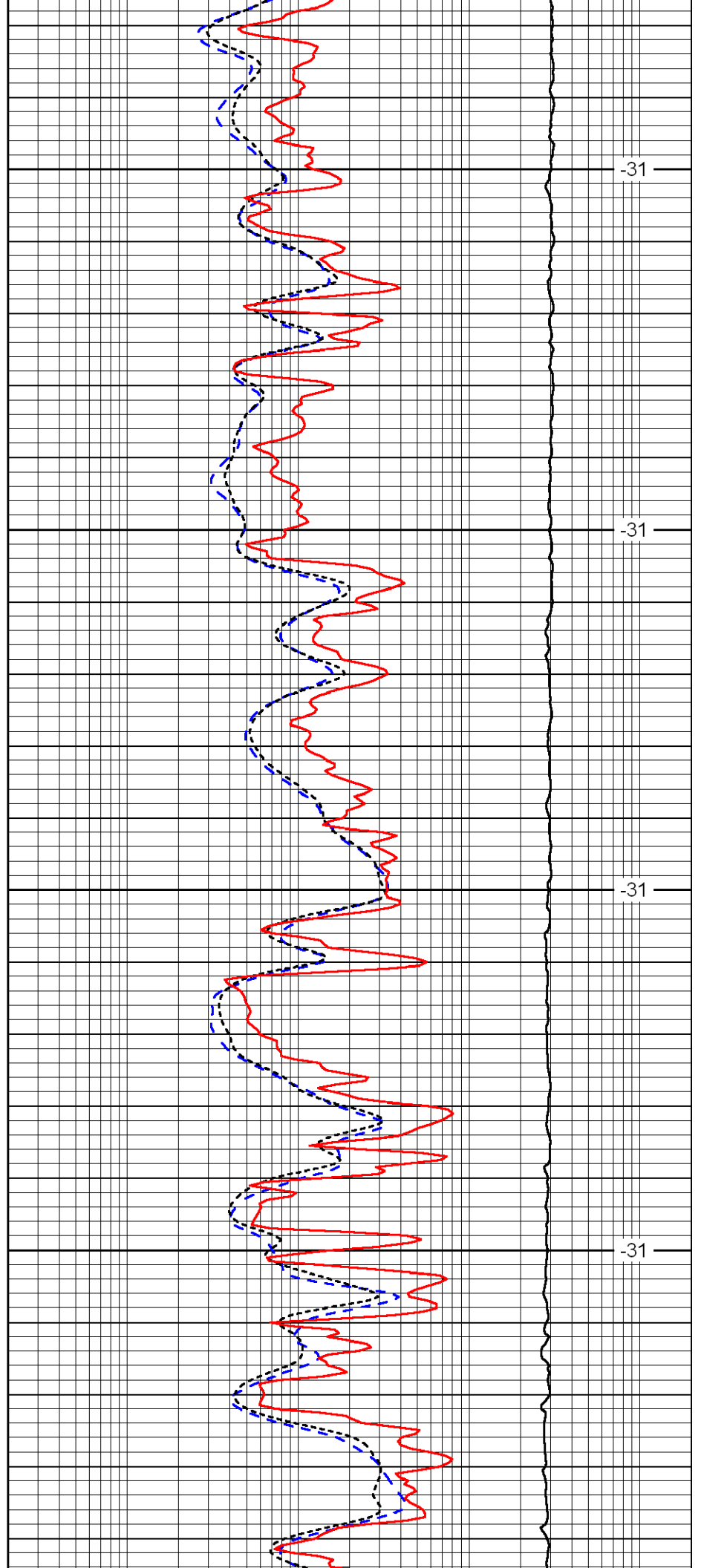


3150

3200

3250

3300

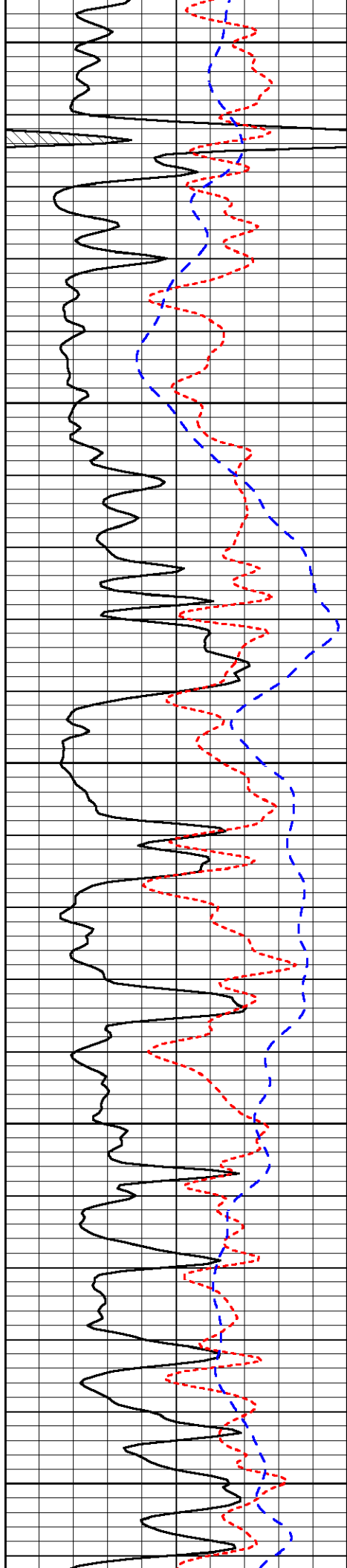


-31

-31

-31

-31



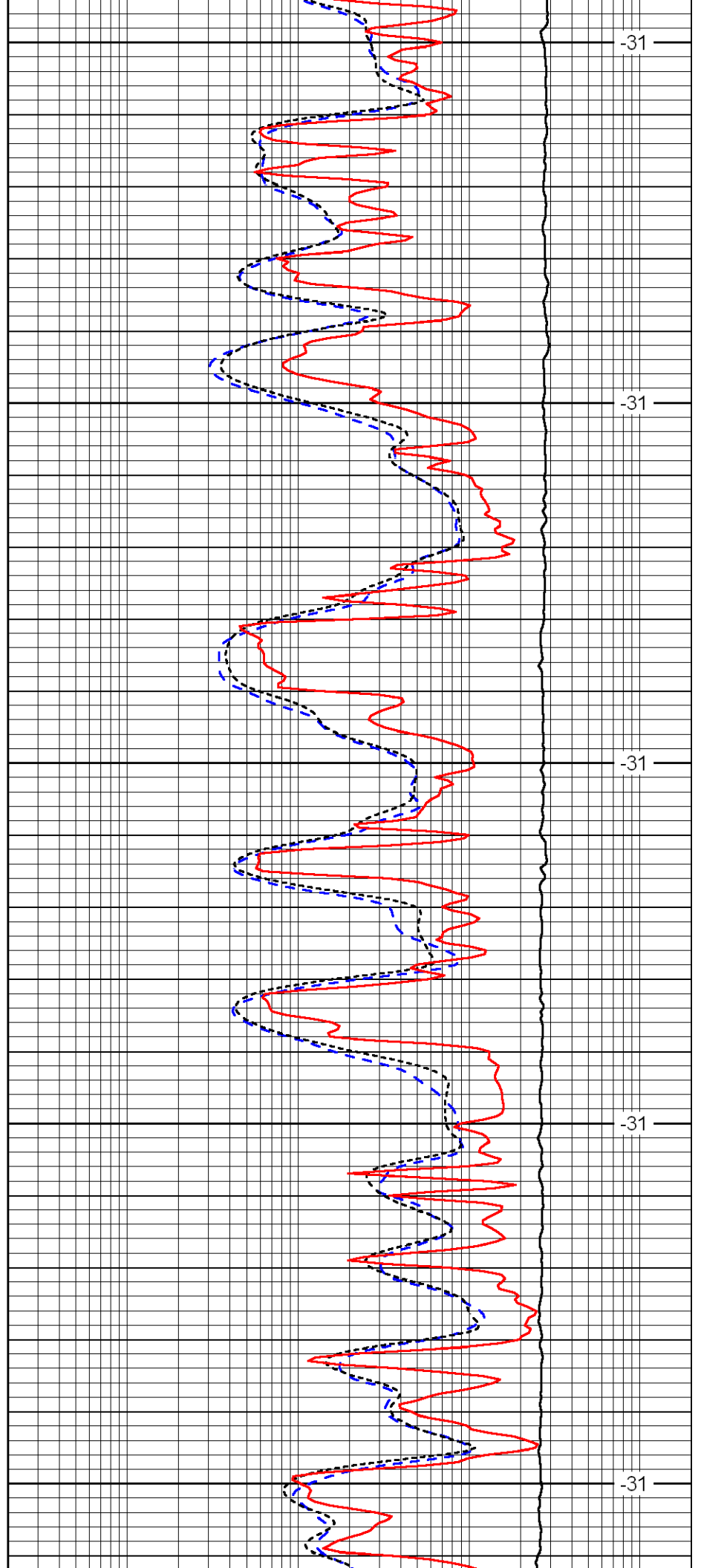
3350

3400

3450

3500

3550



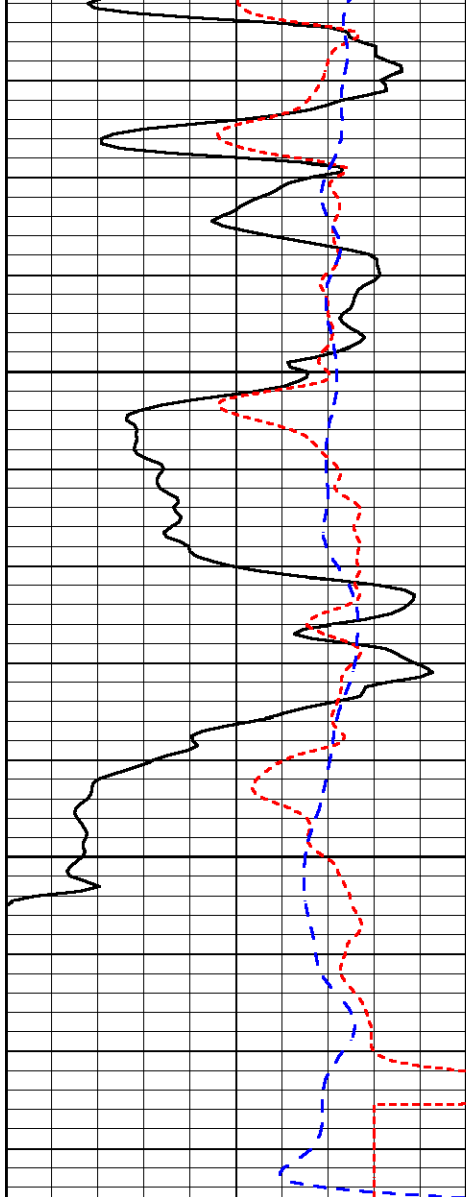
-31

-31

-31

-31

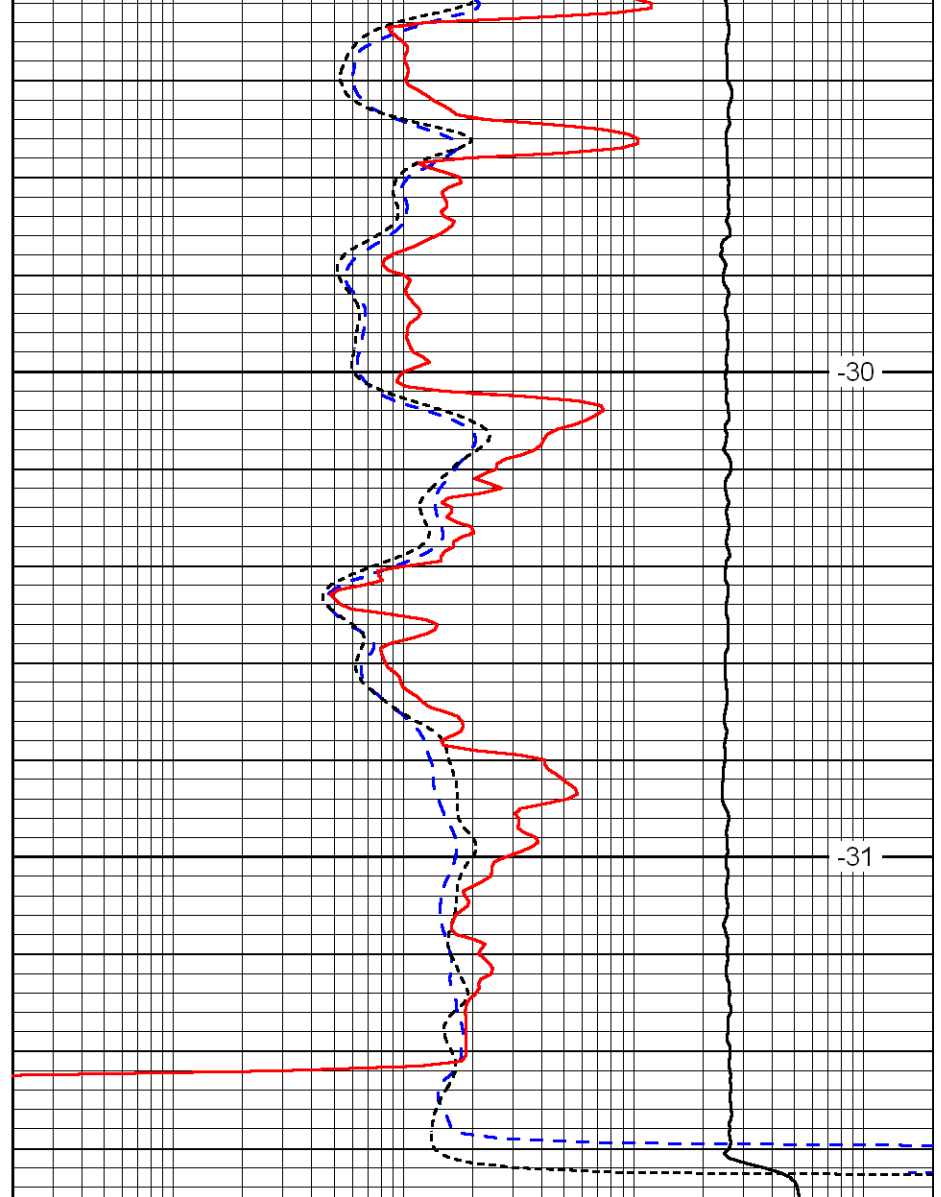
-31



3600

3650

0	Gamma Ray	150
-160	RXO/RT	40
-200	SP	0



-30

-31

0.2	Deep Resistivity	2000
0.2	Medium Resistivity	2000
0.2	Shallow Resistivity	2000
10000	Line Tension	0

LSPD