



Dual Induction Log

DIGITAL LOG (785) 625-3858

15-101-22,325-00-00

API No. _____
 Company **Larson Engineering, Inc.**
 Well **Gail No. 1-21**
 Field **Reifschneider Southeast**
 County **Lane** State **Kansas**
 Location **SE SW NE NE
 1165' FNL & 950' FEL**
 Sec: **21** Twp: **18 S** Rge: **29 W**

Other Services
 CNL/CDL
 MEL

Permanent Datum **Ground Level** Elevation **2808**
 Log Measured From **Kelly Bushing** 7 Ft. Above Perm. Datum
 Drilling Measured From **Kelly Bushing**

Date	11/14/2011	Elevation	2815
Run Number	One	K.B.	2815
Depth Driller	4655	D.F.	2808
Depth Logger	4659	G.L.	2808
Bottom Logged Interval	4658		
Top Log Interval	250		
Casing Driller	8.625 @ 261		
Casing Logger	257		
Bit Size	7.875		
Type Fluid in Hole	Chemical		
Salinity, ppm CL	2600		
Density / Viscosity	9.1 59		
pH / Fluid Loss	10.5 6.8		
Source of Sample	Flowline		
Rm @ Meas. Temp	.70 @ 62		
Rmf @ Meas. Temp	.53 @ 62		
Rmc @ Meas. Temp	.95 @ 62		
Source of Rmf / Rmc	Charts		
Rm @ BHT	.35 @ 123		
Operating Rig Time	4 1/2 Hours		
Max Rec. Temp. F	123		
Equipment Number	15		
Location	Hays		
Recorded By	Daylon Kerr		
Witnessed By	Vern Schrag		

<<< Fold Here >>>

All interpretations are opinions based on inferences from electrical or other measurements and we cannot and do not guarantee the accuracy or correctness of any interpretation, and we shall not, except in the case of gross or willful negligence on our part, be liable or responsible for any loss, costs, damages, or expenses incurred or sustained by anyone resulting from any interpretation made by any of our officers, agents or employees. These interpretations are also subject to our general terms and conditions set out in our current Price Schedule.

Comments

Thank you for using Log-Tech, Inc.
 (785) 625-3858
 Dighton KS,
 West 3 1/4, 1/4 South,
 East Into

Database File: c:\warrior\data\larson_gail no. 1-21\larson_gail_1_21hd.db
 Dataset Pathname: DIL\larstk
 Presentation Format: dil2in
 Dataset Creation: Mon Nov 14 23:23:13 2011
 Charted by: Depth in Feet scaled 1:600

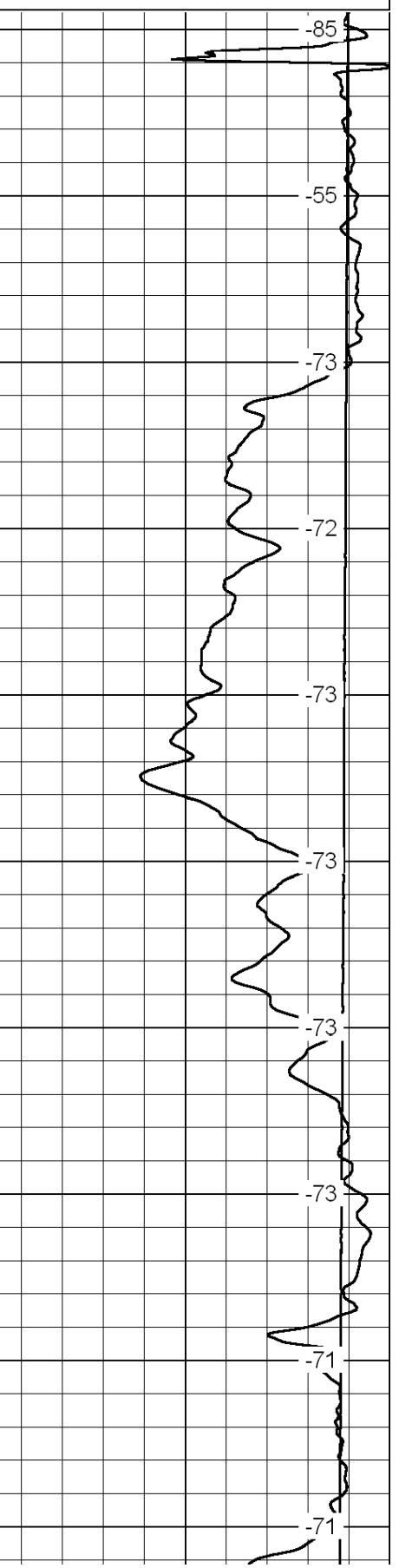
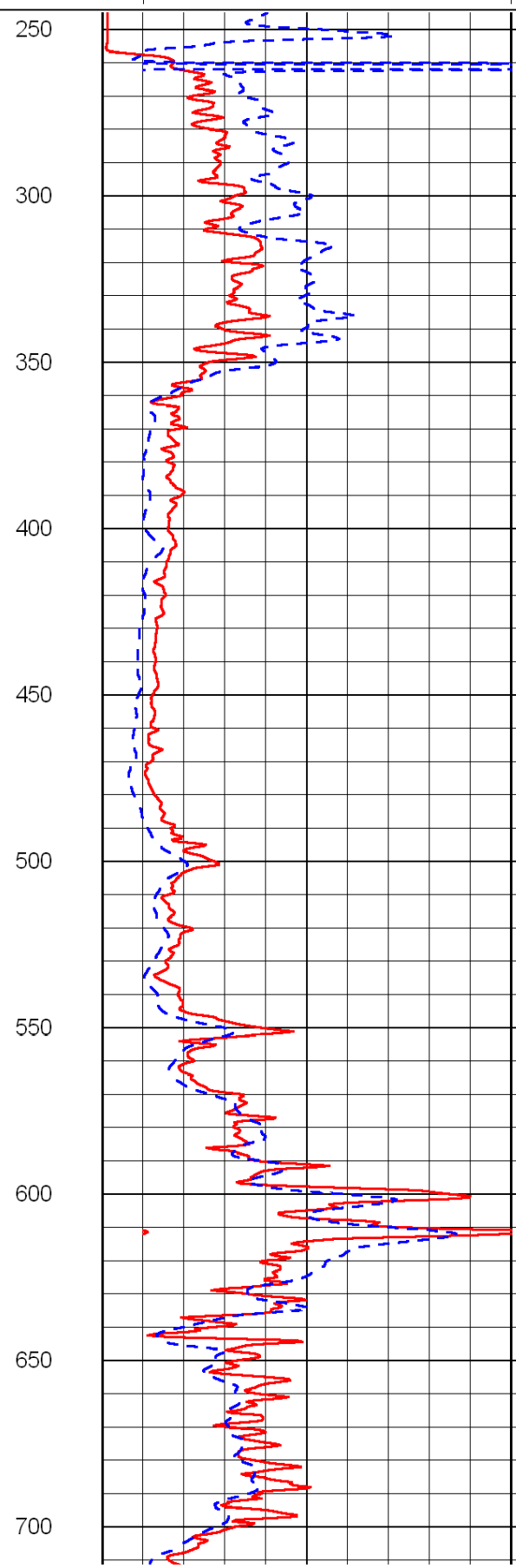
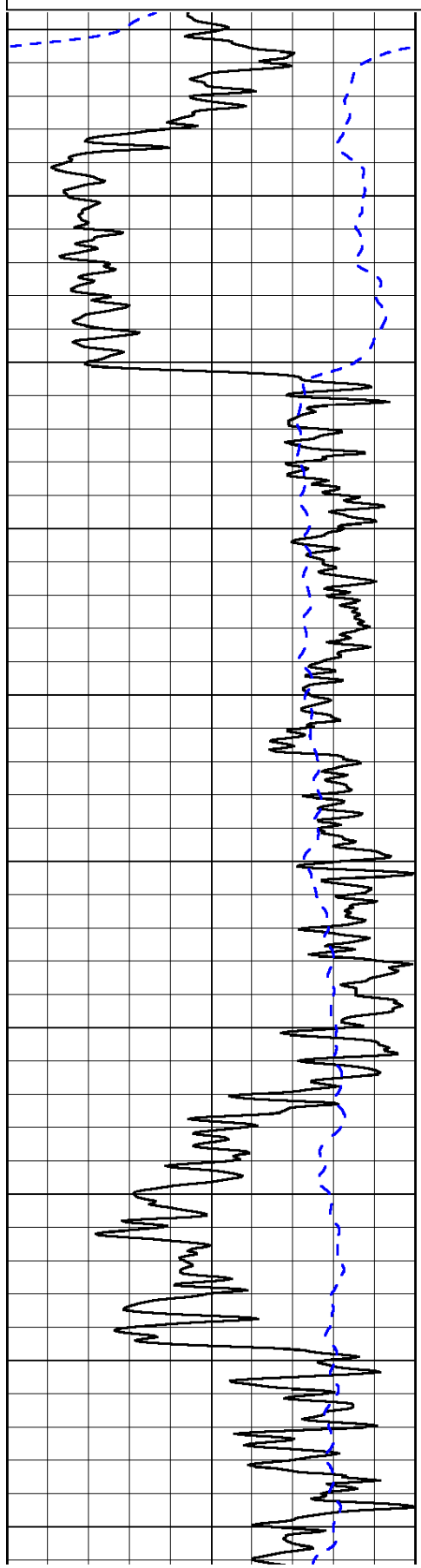
0	Gamma Ray	150
-200	SP (mV)	0

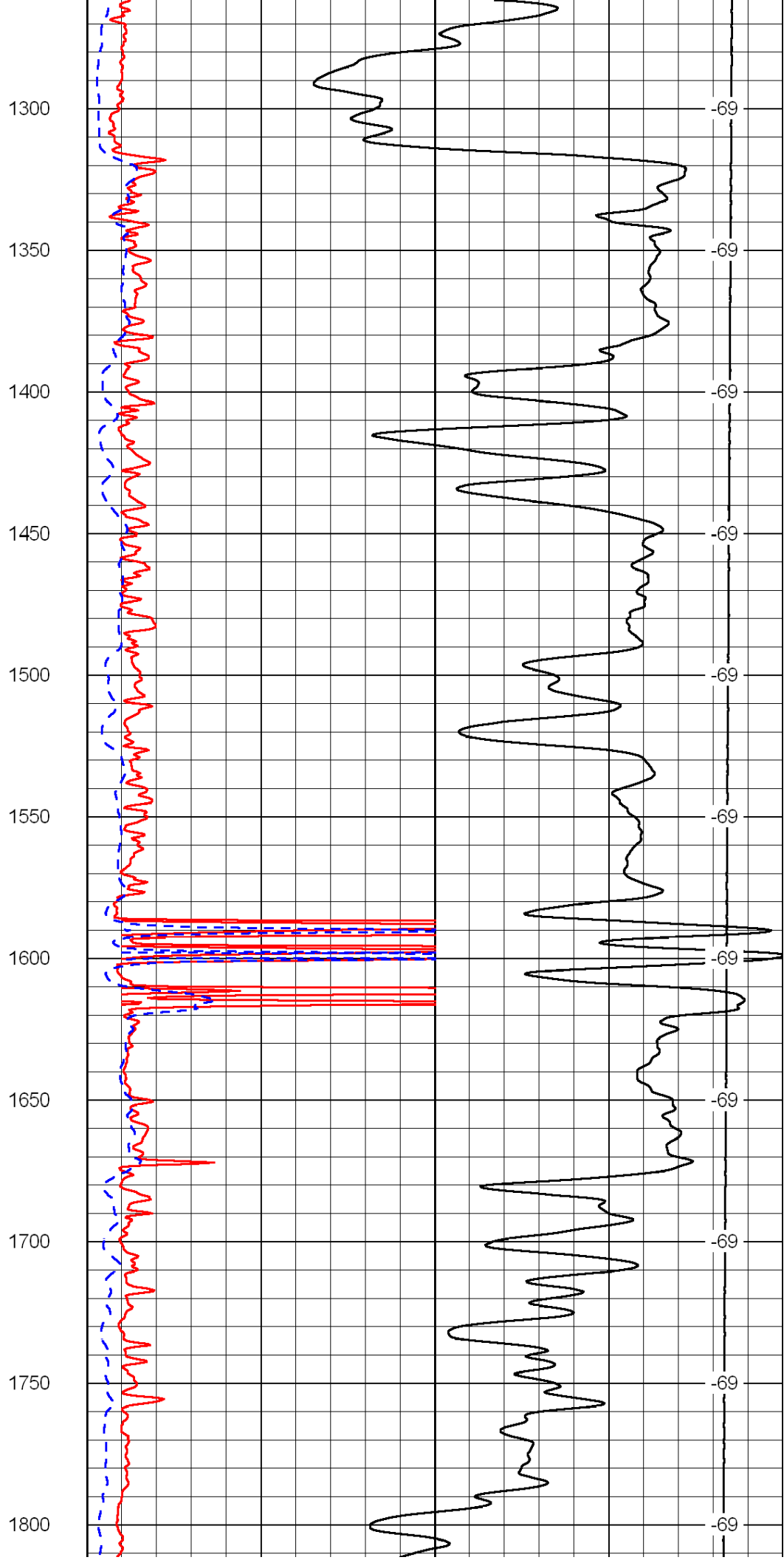
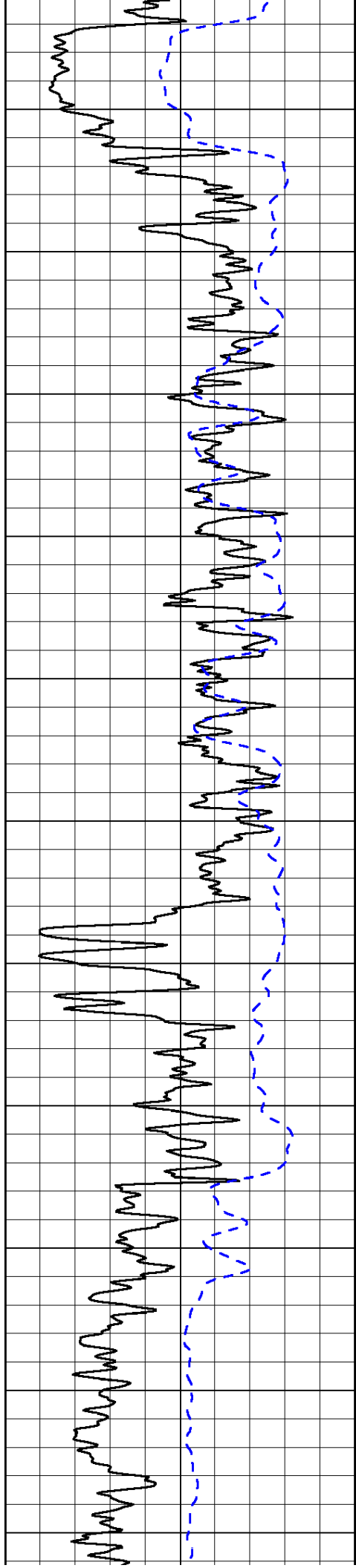
0	Shallow Resistivity	50
0	Deep Resistivity	50

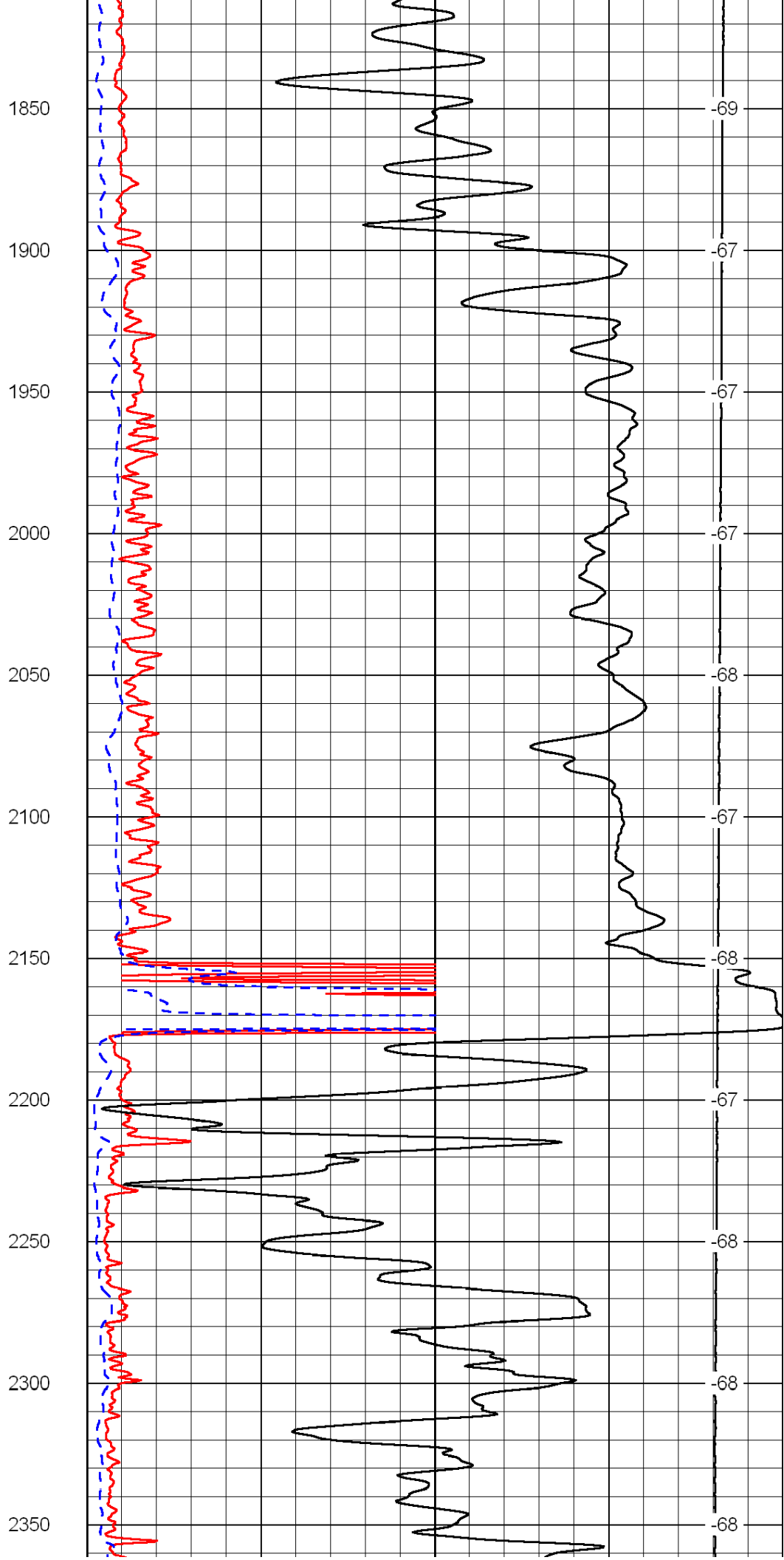
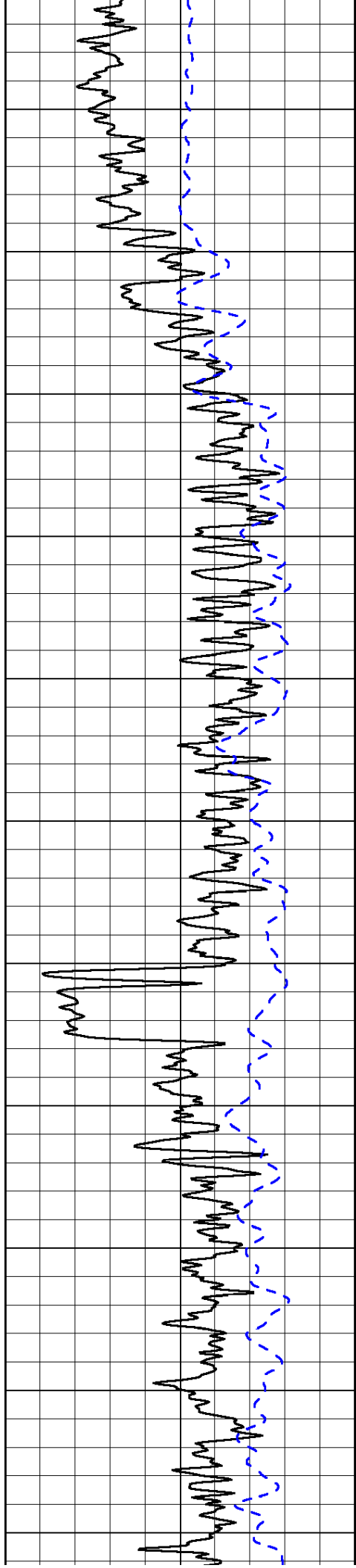
LSPD

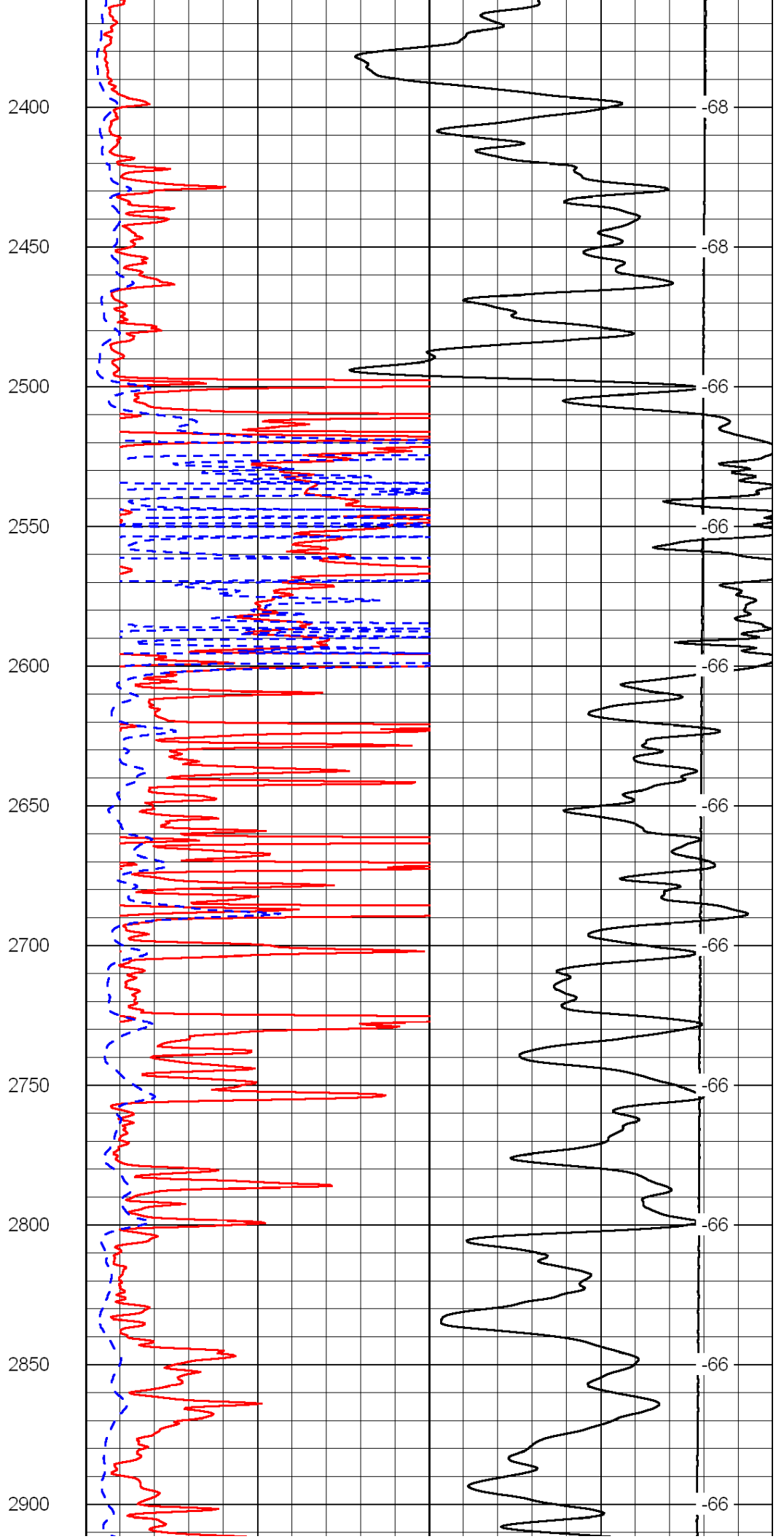
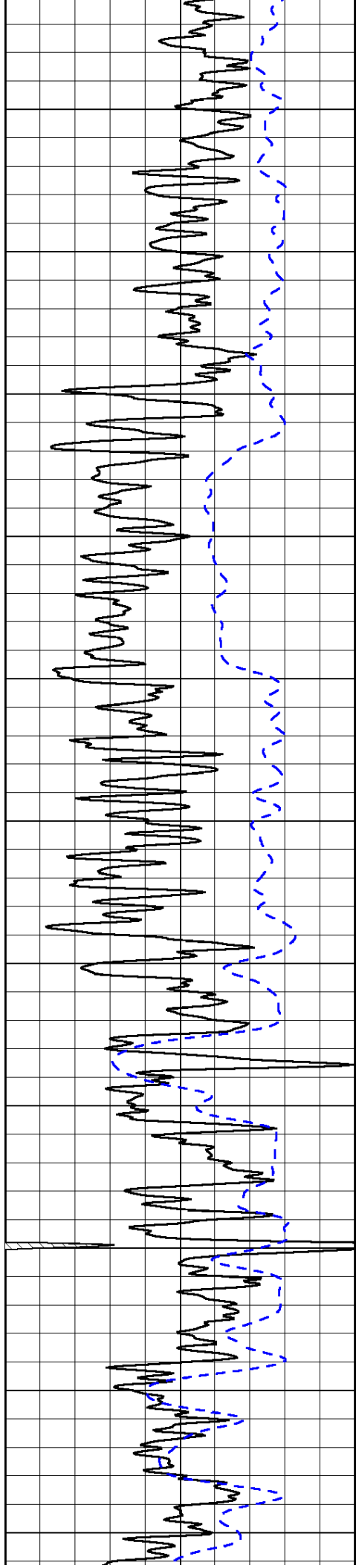
1000	Conductivity	0
15000	Line Tension	0

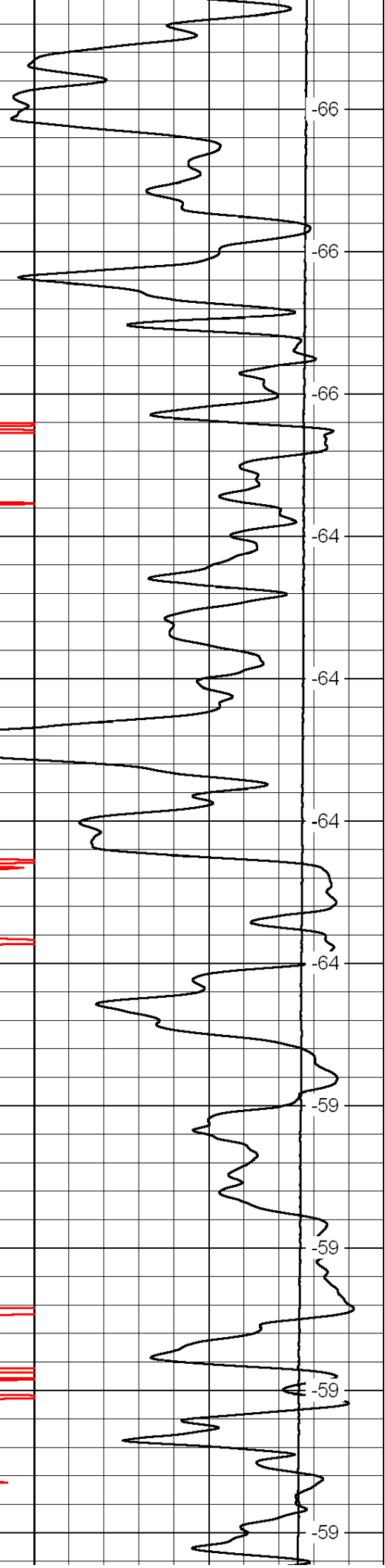
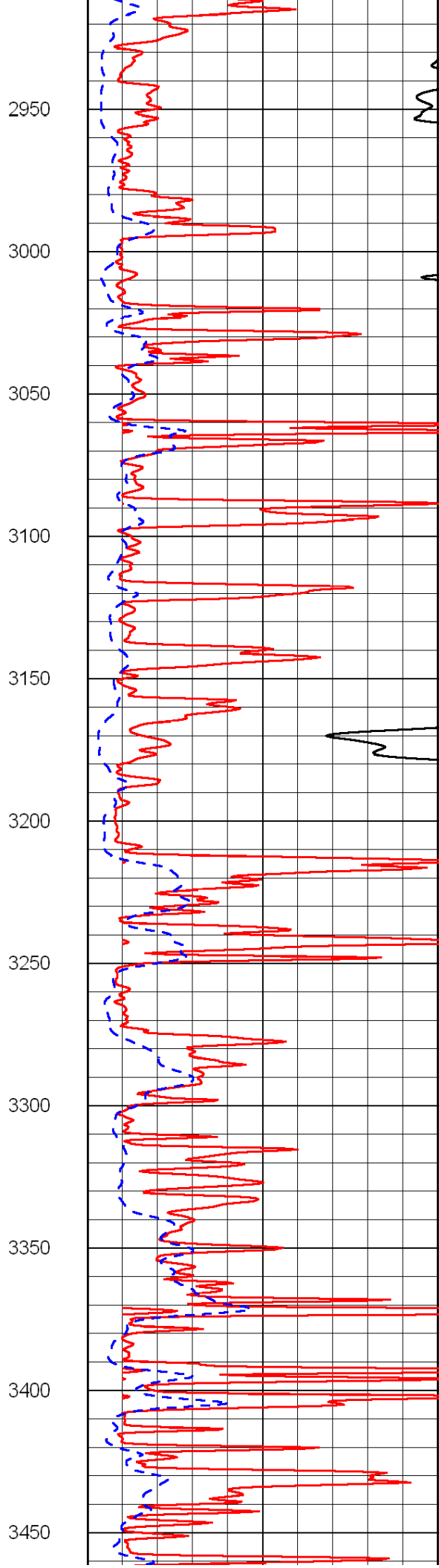
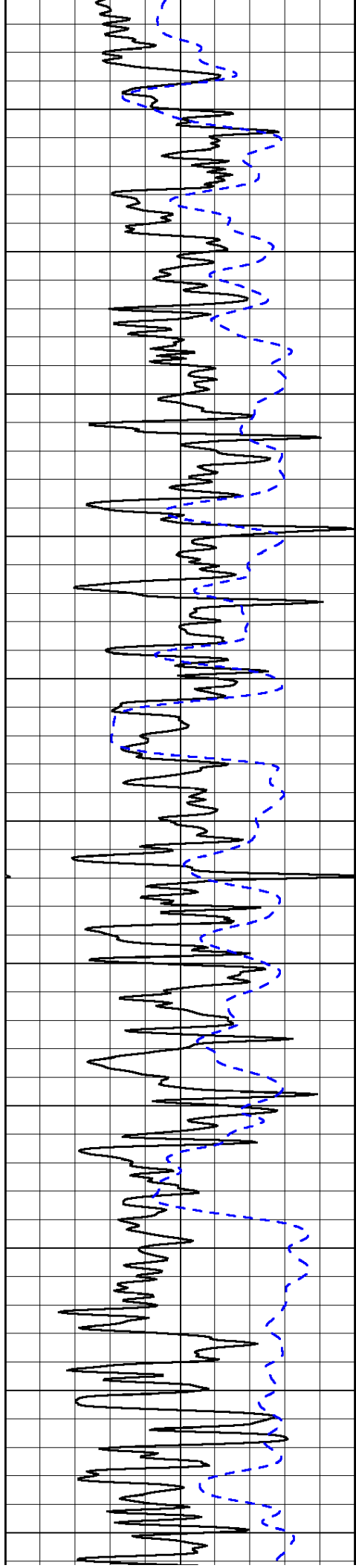
50	Shallow Resistivity	500
50	Deep Resistivity	500

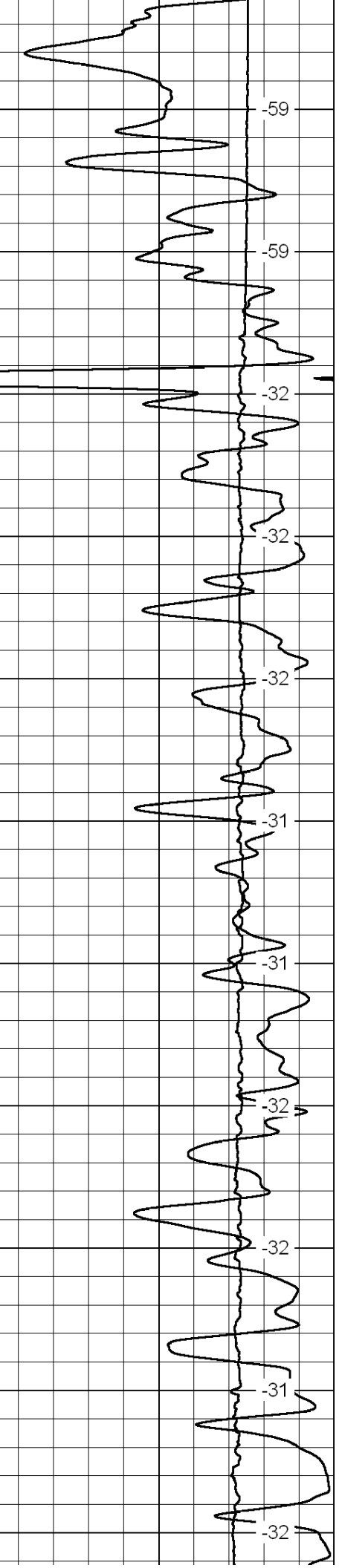
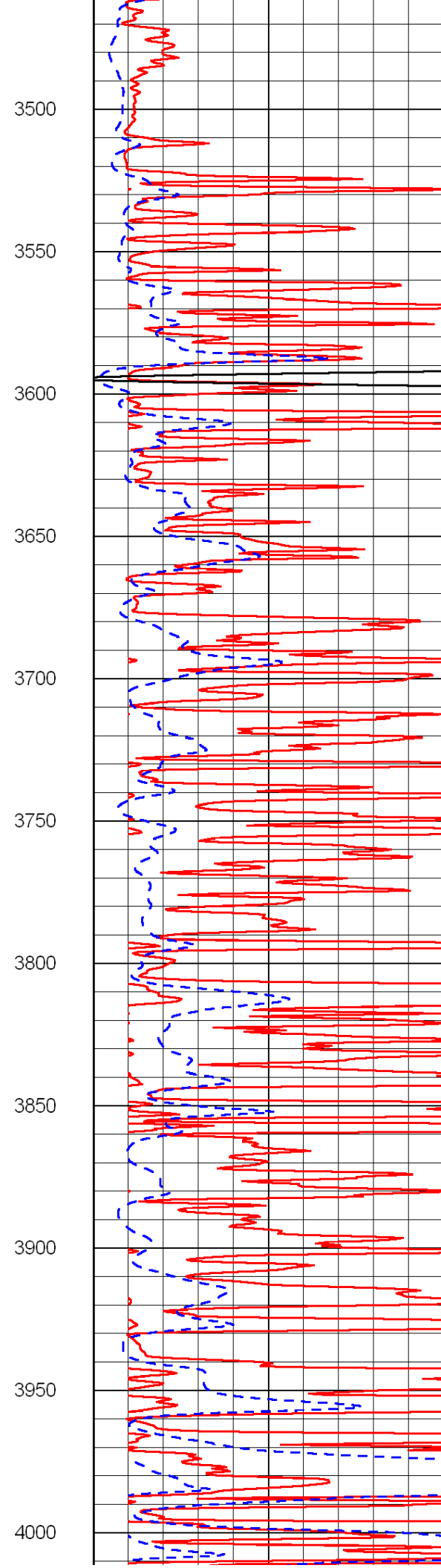
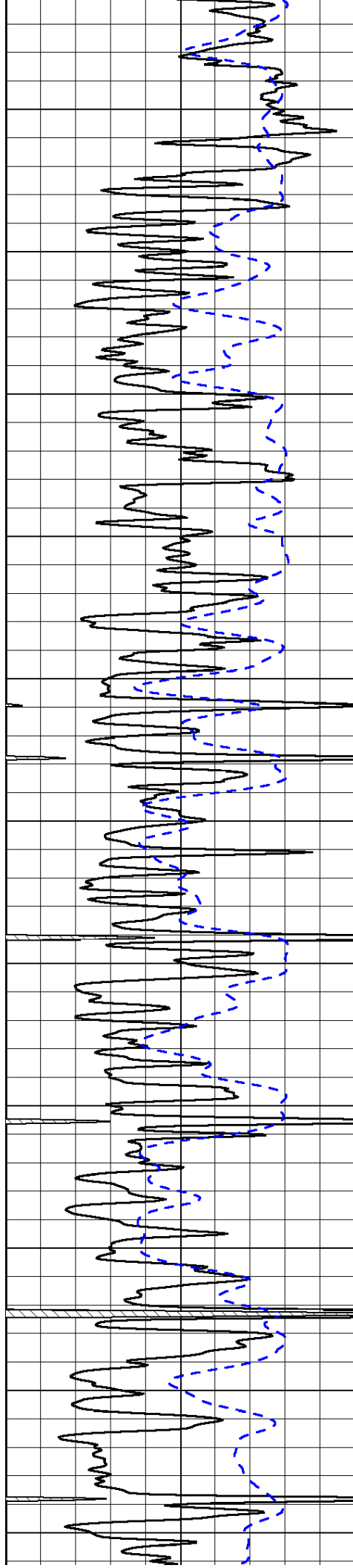


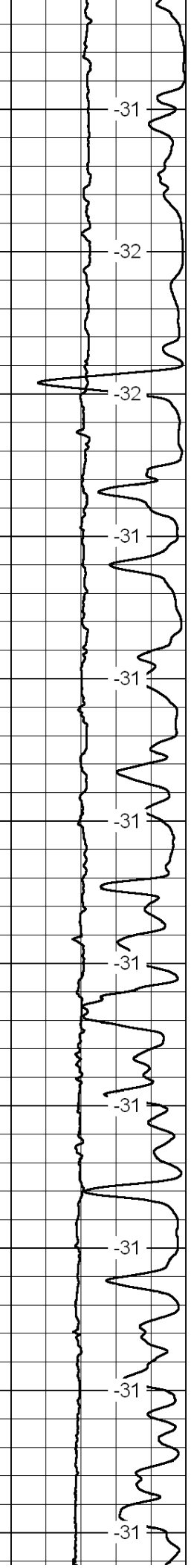
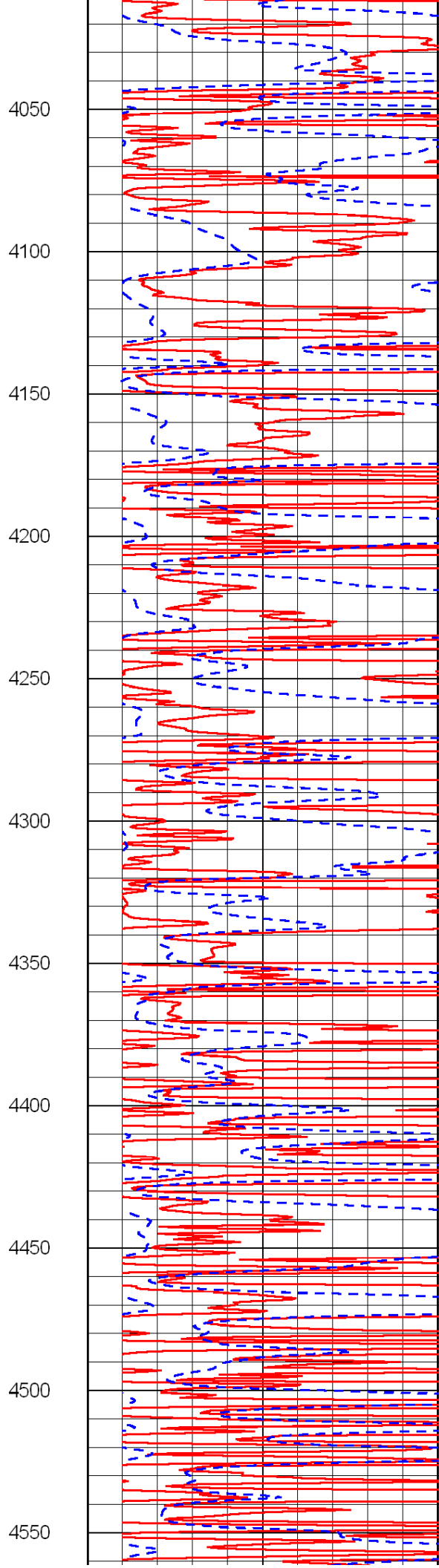
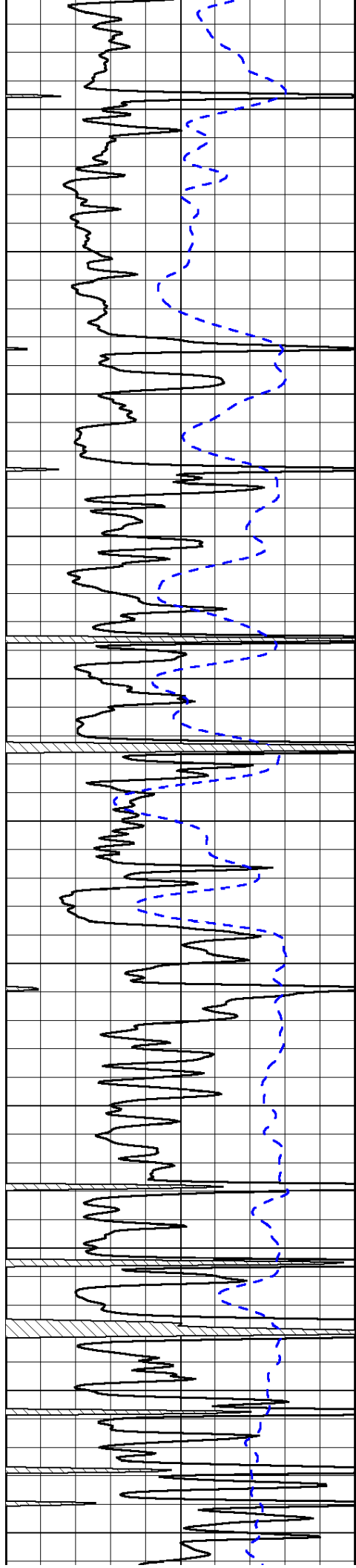


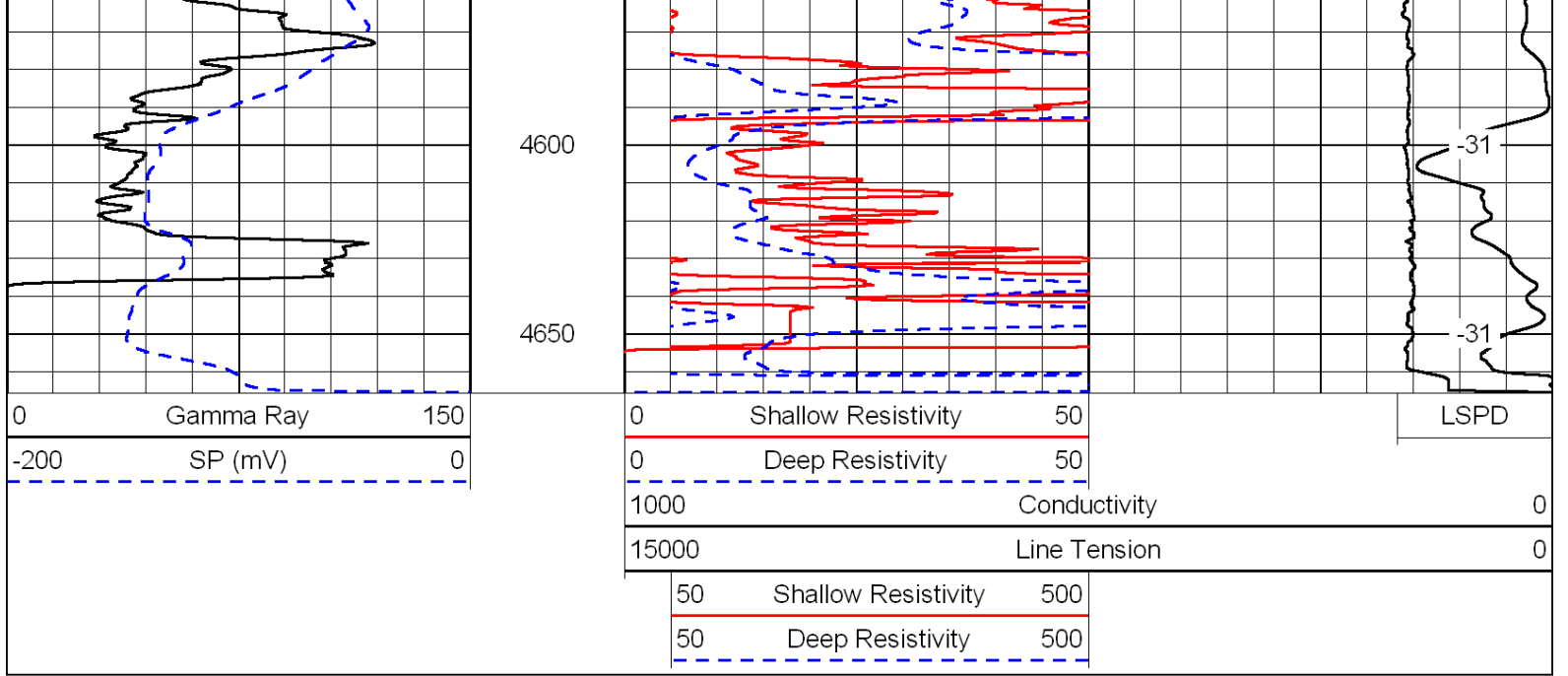




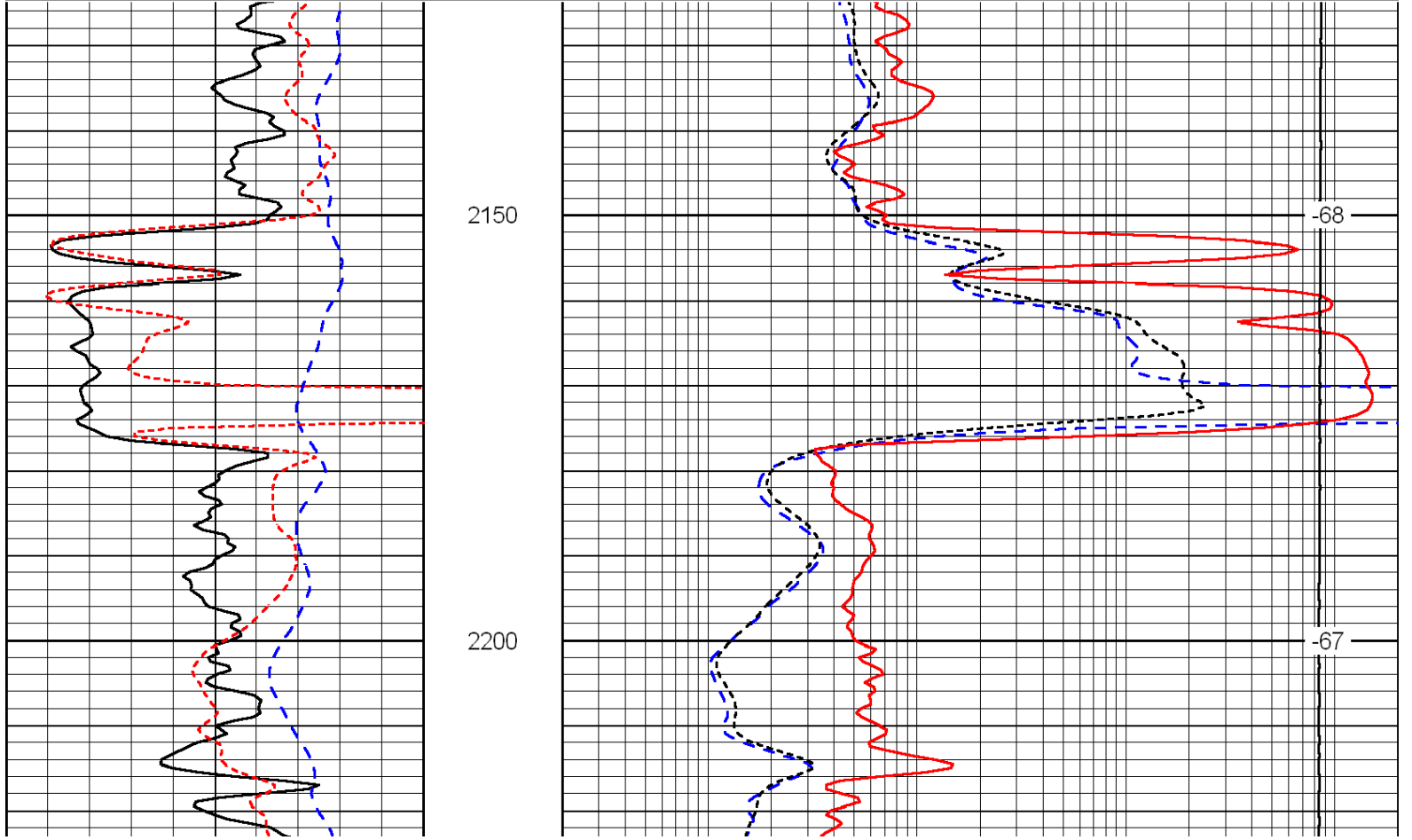
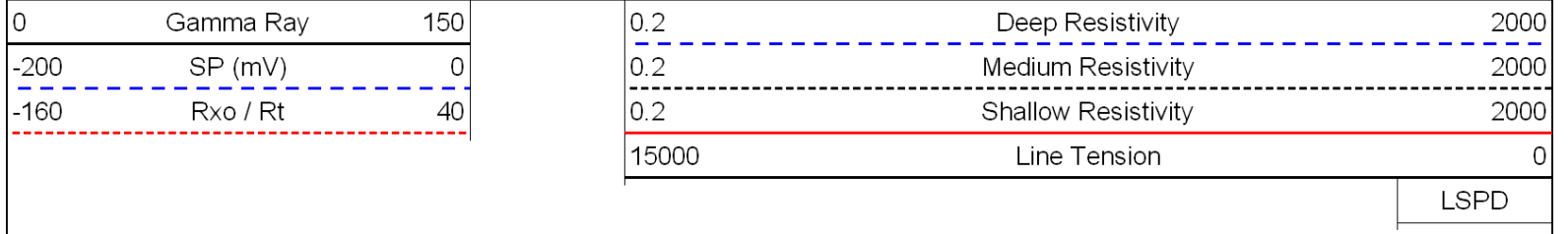








Database File: c:\warrior\data\larson_gail no. 1-21\larson_gail_1_21hd.db
 Dataset Pathname: DIL\larstk
 Presentation Format: dil
 Dataset Creation: Mon Nov 14 23:23:13 2011
 Charted by: Depth in Feet scaled 1:240



0	Gamma Ray	150
-200	SP (mV)	0
-160	Rxo / Rt	40

0.2	Deep Resistivity	2000
0.2	Medium Resistivity	2000
0.2	Shallow Resistivity	2000
15000	Line Tension	0

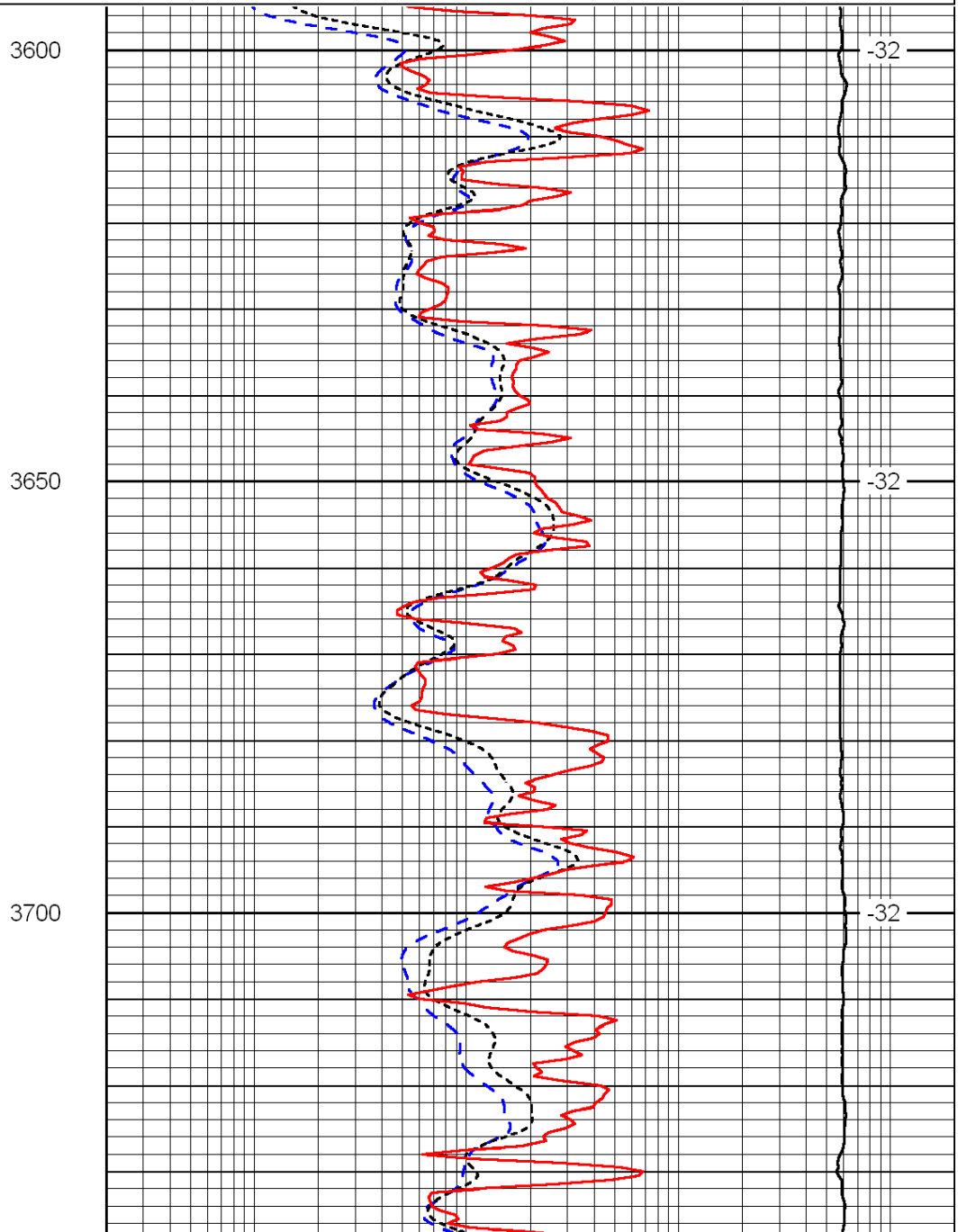
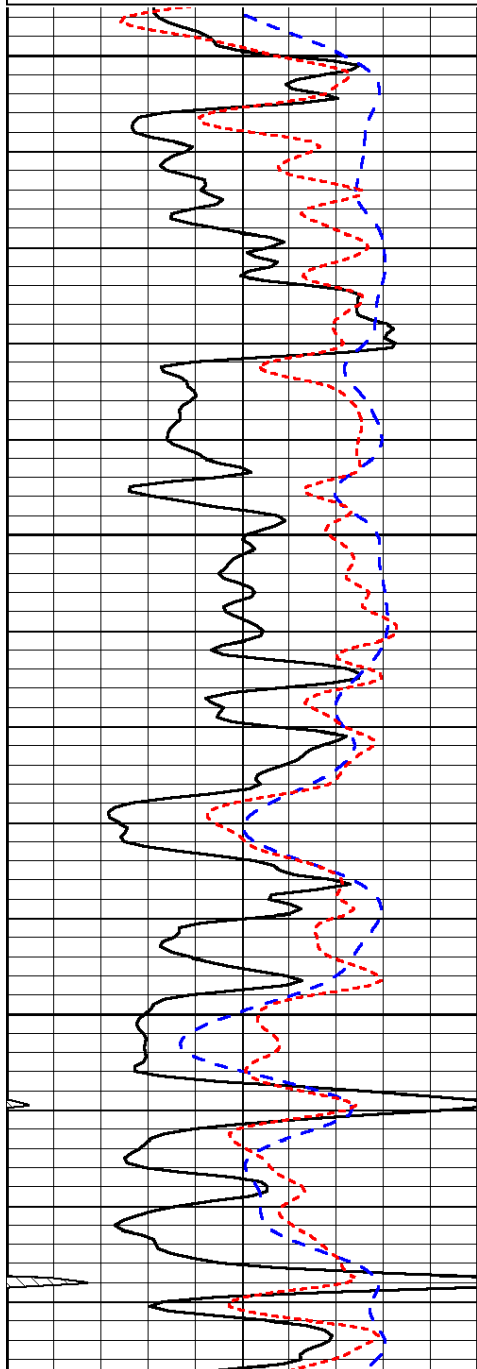
LSPD

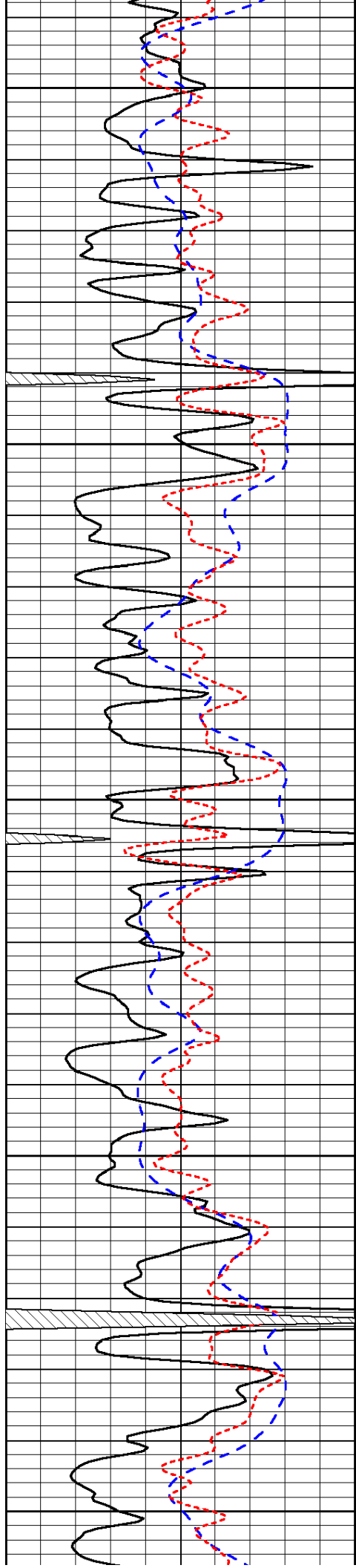
Database File: c:\warrior\data\larson_gail no. 1-21\larson_gail_1_21hd.db
 Dataset Pathname: DIL\larstk
 Presentation Format: dil
 Dataset Creation: Mon Nov 14 23:23:13 2011
 Charted by: Depth in Feet scaled 1:240

0	Gamma Ray	150
-200	SP (mV)	0
-160	Rxo / Rt	40

0.2	Deep Resistivity	2000
0.2	Medium Resistivity	2000
0.2	Shallow Resistivity	2000
15000	Line Tension	0

LSPD





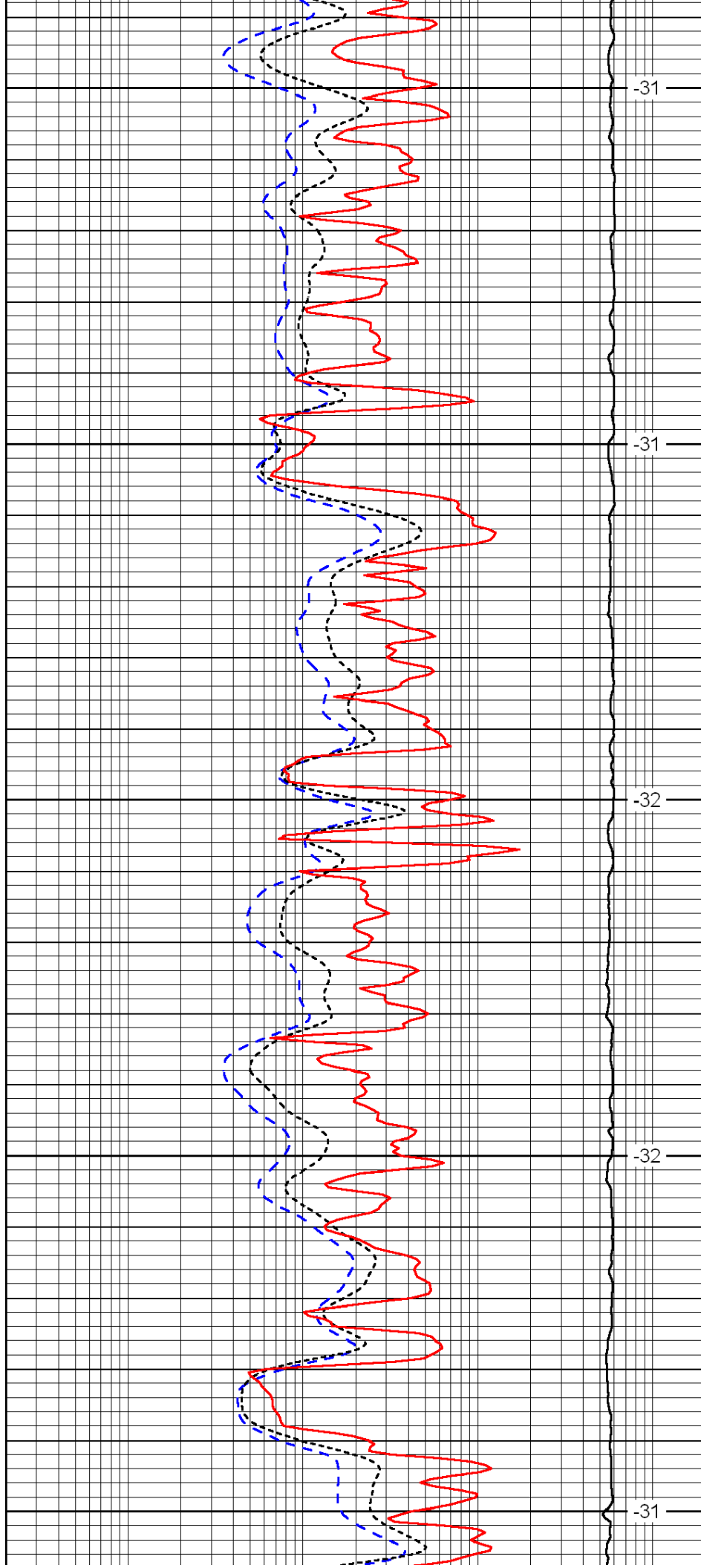
3750

3800

3850

3900

3950



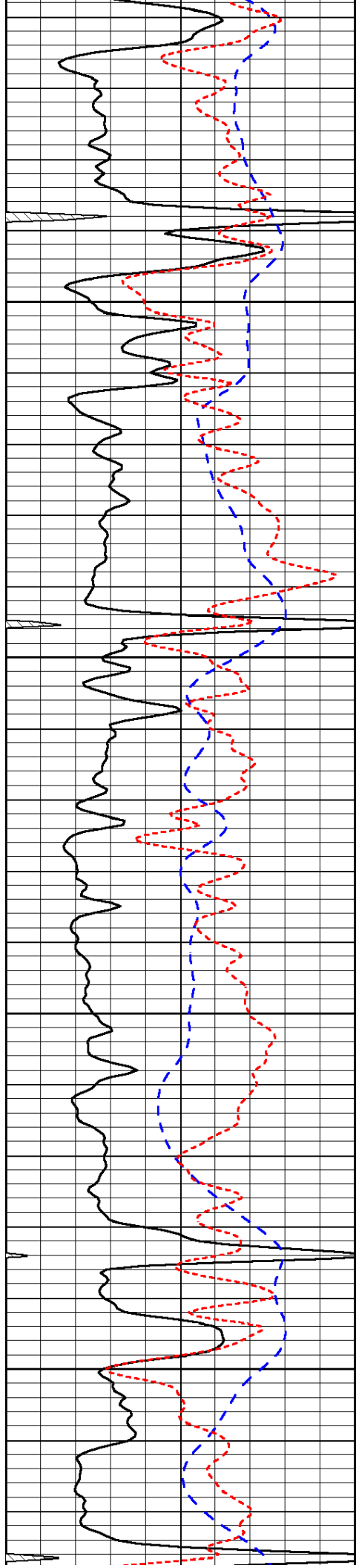
-31

-31

-32

-32

-31

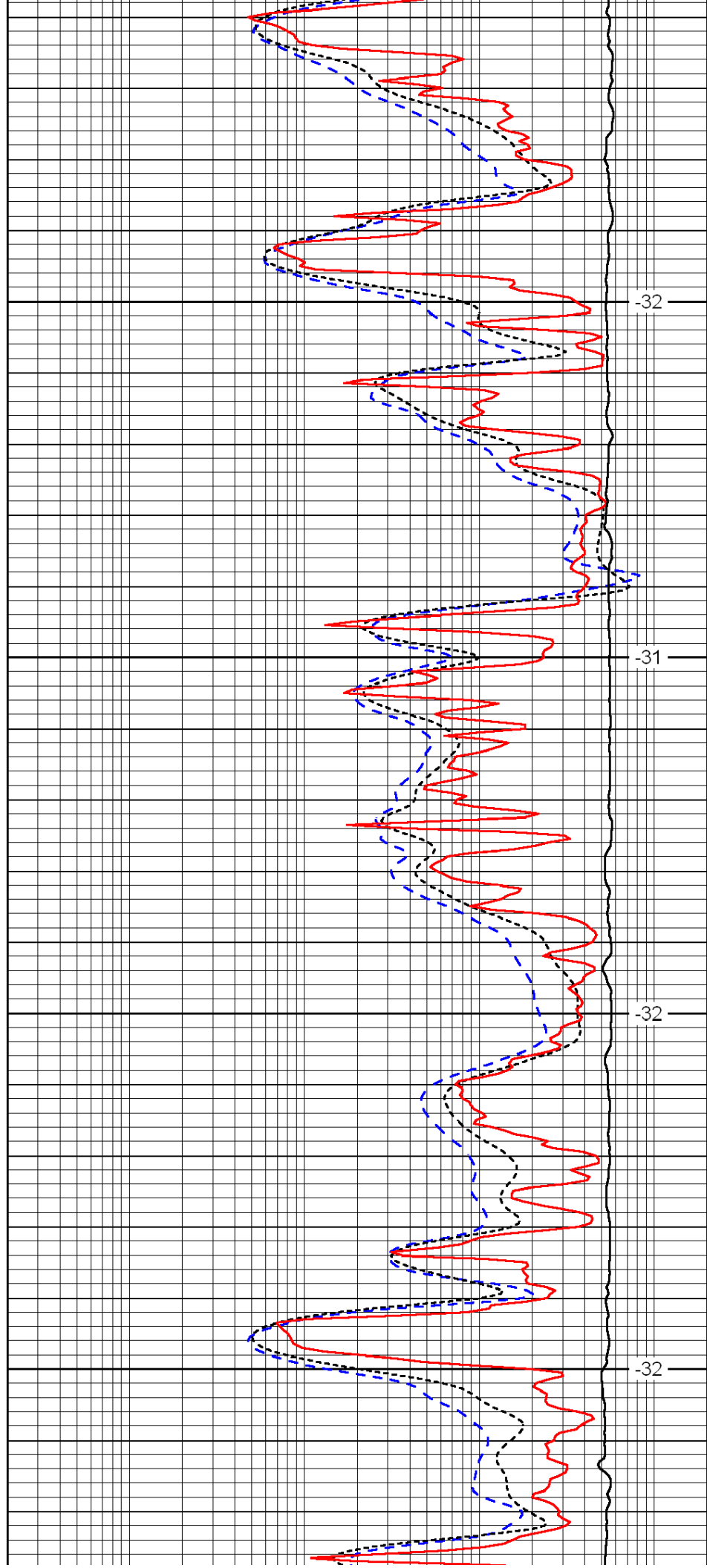


4000

4050

4100

4150

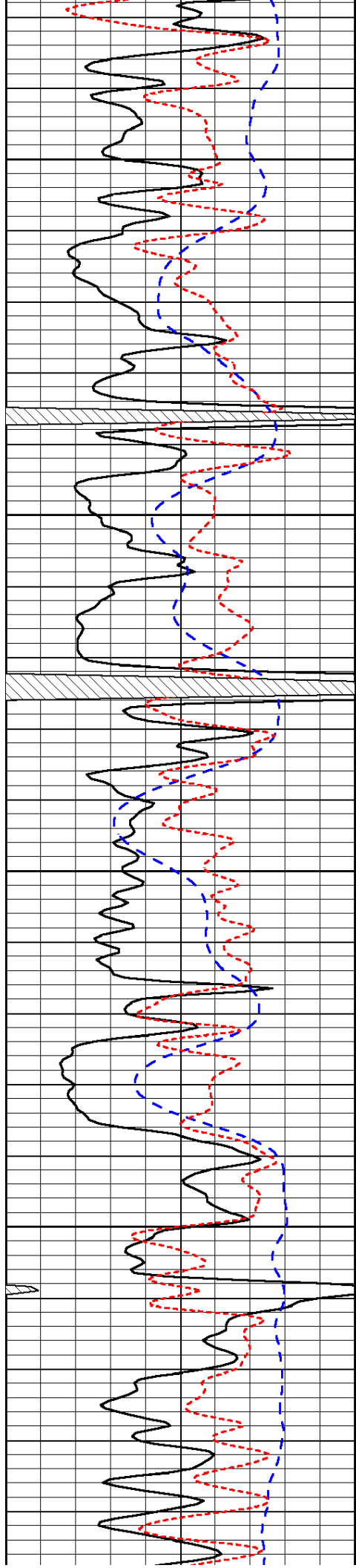


-32

-31

-32

-32

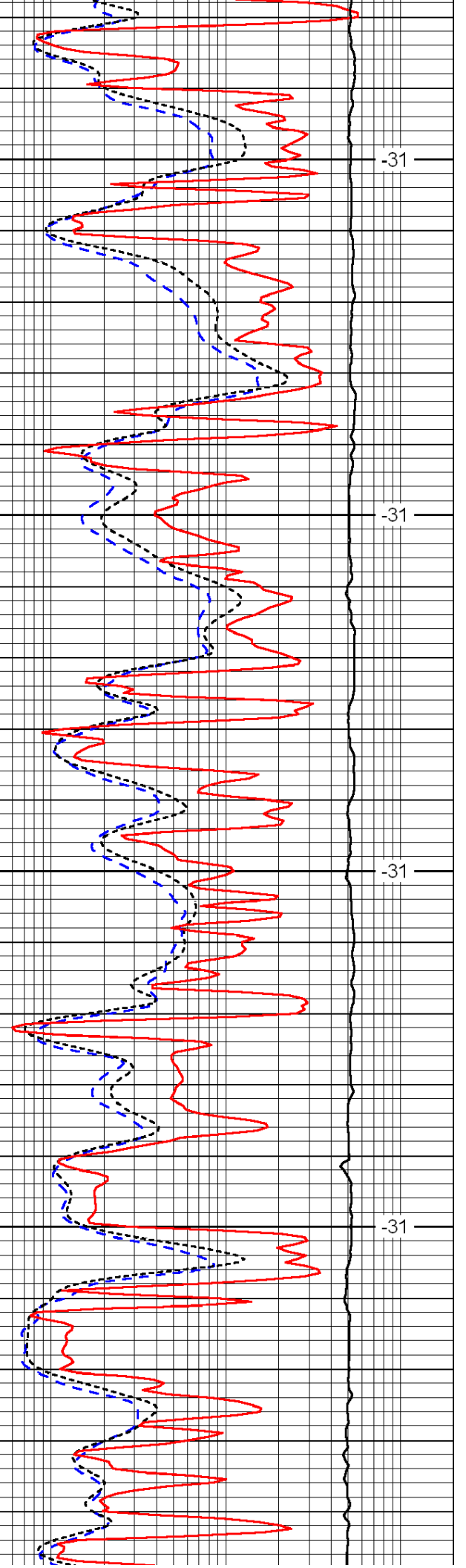


4200

4250

4300

4350

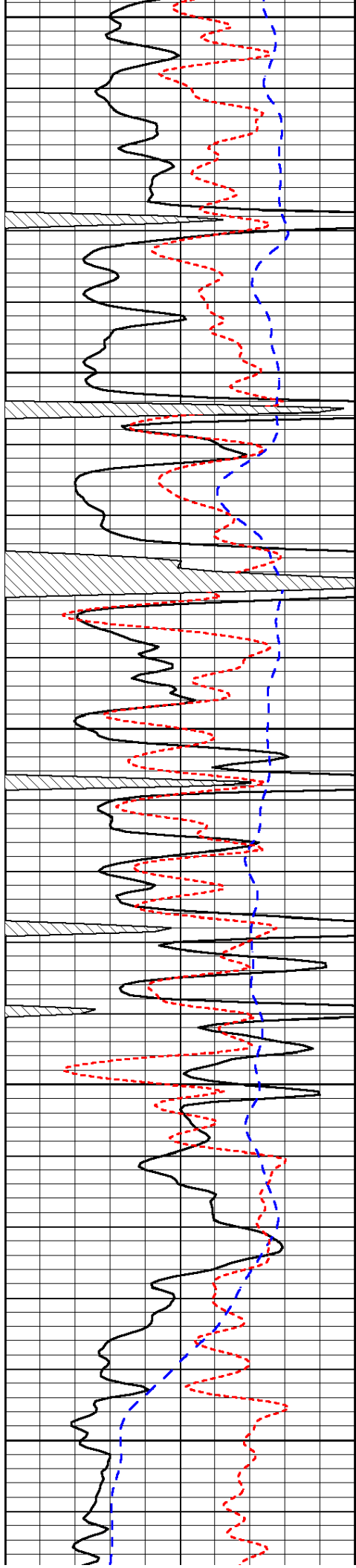


-31

-31

-31

-31



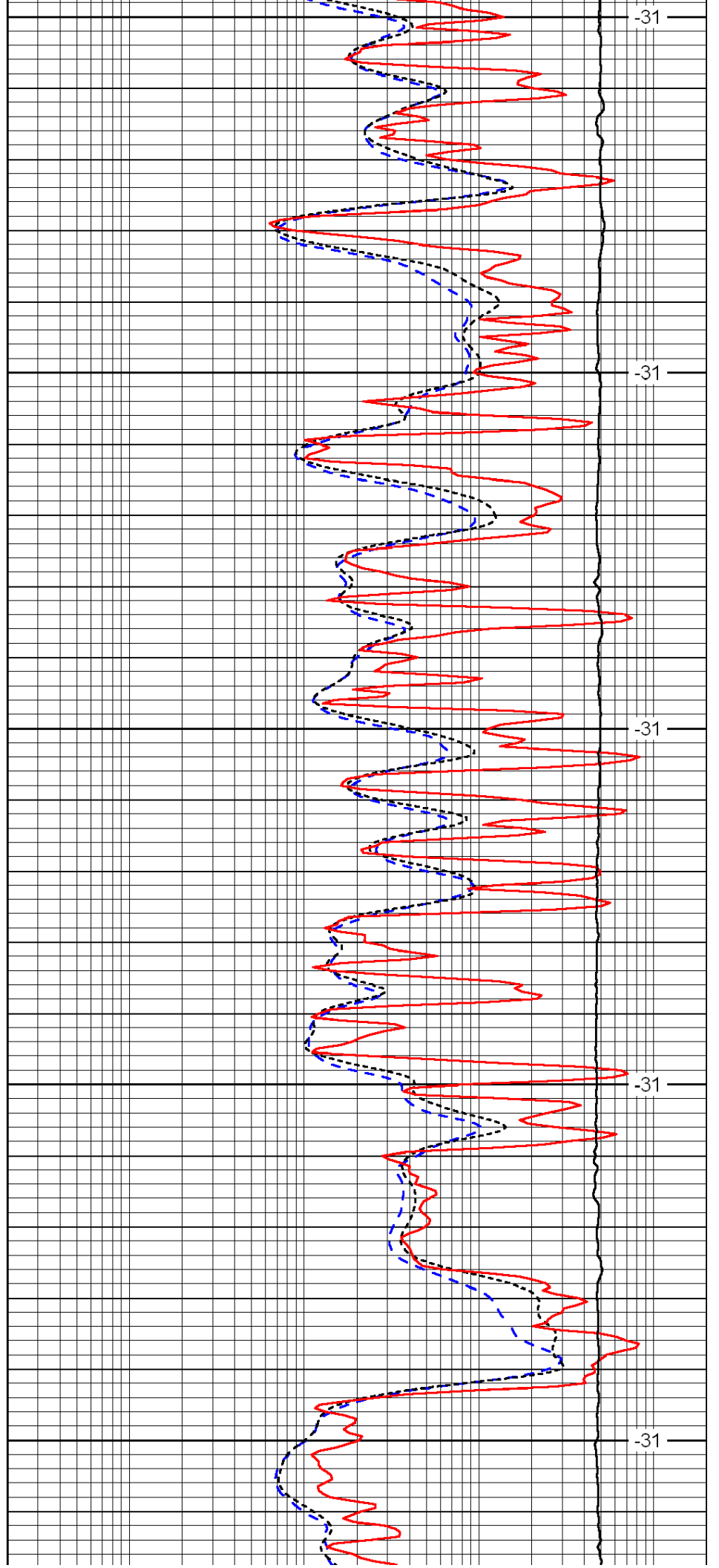
4400

4450

4500

4550

4600



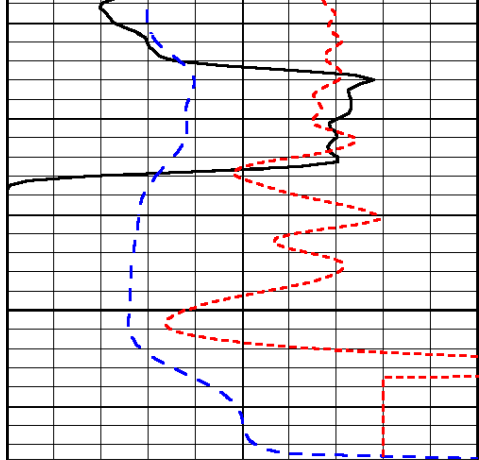
-31

-31

-31

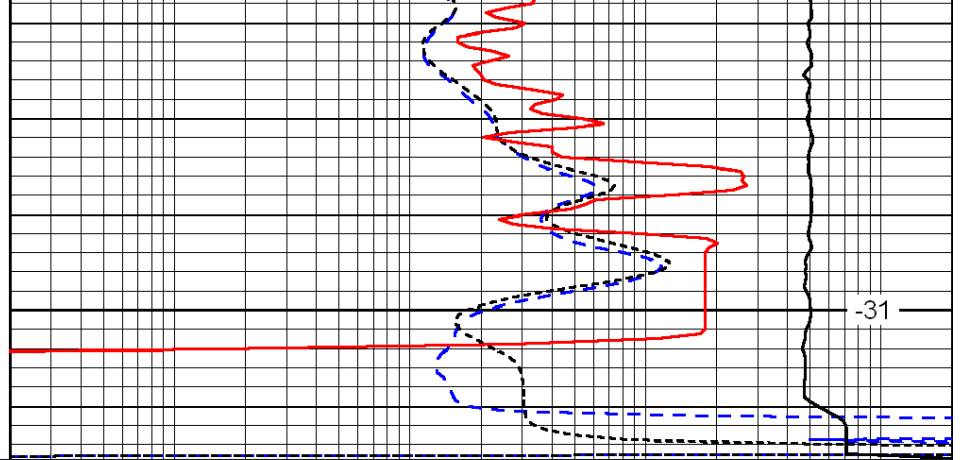
-31

-31



0	Gamma Ray	150
-200	SP (mV)	0
-160	Rxo / Rt	40

4650



0.2	Deep Resistivity	2000
0.2	Medium Resistivity	2000
0.2	Shallow Resistivity	2000
15000	Line Tension	0

-31

LSPD