



**SUPERIOR**  
Hays,  
Kansas

**MICRO**  
LOG

Company CRAWFORD OIL & GAS CO. LLC.  
Well BOHL TRUST #1-1  
Field WILDCAT  
County NORTON  
State KANSAS

Company CRAWFORD OIL & GAS COMPANY, LLC.  
Well BOHL TRUST #1-1  
Field WILDCAT  
County NORTON State KANSAS

Location: API # : 15-137-20561-0000  
2209' FNL & 1322' FWL  
NW - SW - SE - NW  
SEC 1 TWP 3S RGE 25W  
Permanent Datum GROUND LEVEL Elevation 2493  
Log Measured From KELLY BUSHING 5' A.G.L.  
Drilling Measured From KELLY BUSHING  
Other Services  
CDL/CNL/PE  
DIL  
Elevation  
K.B. 2498  
D.F. 2496  
G.L. 2493

Date	5/2/11		
Run Number	TWO		
Depth Driller	3756		
Depth Logger	3758		
Bottom Logged Interval	3756		
Top Log Interval	3000		
Casing Driller	8 5/8"@263'		
Casing Logger	263		
Bit Size	7 7/8"		
Type Fluid in Hole	CHEMICAL MUD	CHLORIDES 1,000 PPM	
Density / Viscosity	9.4/56		
pH / Fluid Loss	9.5/8.8		
Source of Sample	FLOWLINE		
Rim @ Meas. Temp	.750@70F		
Rmf @ Meas. Temp	.563@70F		
Rmc @ Meas. Temp	.900@70F		
Source of Rmf / Rmc	MEASUREMENT		
Rim @ BHT	.461@114F		
Time Circulation Stopped	10 HOURS		
Time Logger on Bottom	1:30 A.M.		
Maximum Recorded Temperature	114F		
Equipment Number	0836		
Location	HAYS, KANSAS		
Recorded By	JEFF LUEBBERS		
Witnessed By	LARRY FRIEND		

<<< Fold Here >>>

All interpretations are opinions based on inferences from electrical or other measurements and we cannot and do not guarantee the accuracy or correctness of any interpretation, and we shall not, except in the case of gross or willful negligence on our part, be liable or responsible for any loss, costs, damages, or expenses incurred or sustained by anyone resulting from any interpretation made by any of our officers, agents or employees. These interpretations are also subject to our general terms and conditions set out in our current Price Schedule.

**Comments**

THANK YOU FOR USING SUPERIOR WELL SERVICE HAYS, KANSAS (785) 628-6395  
DIRECTIONS  
NORTON, KS. 11W. ON HWY 36 TO "RD. W 11", 1/2S., E. INTO

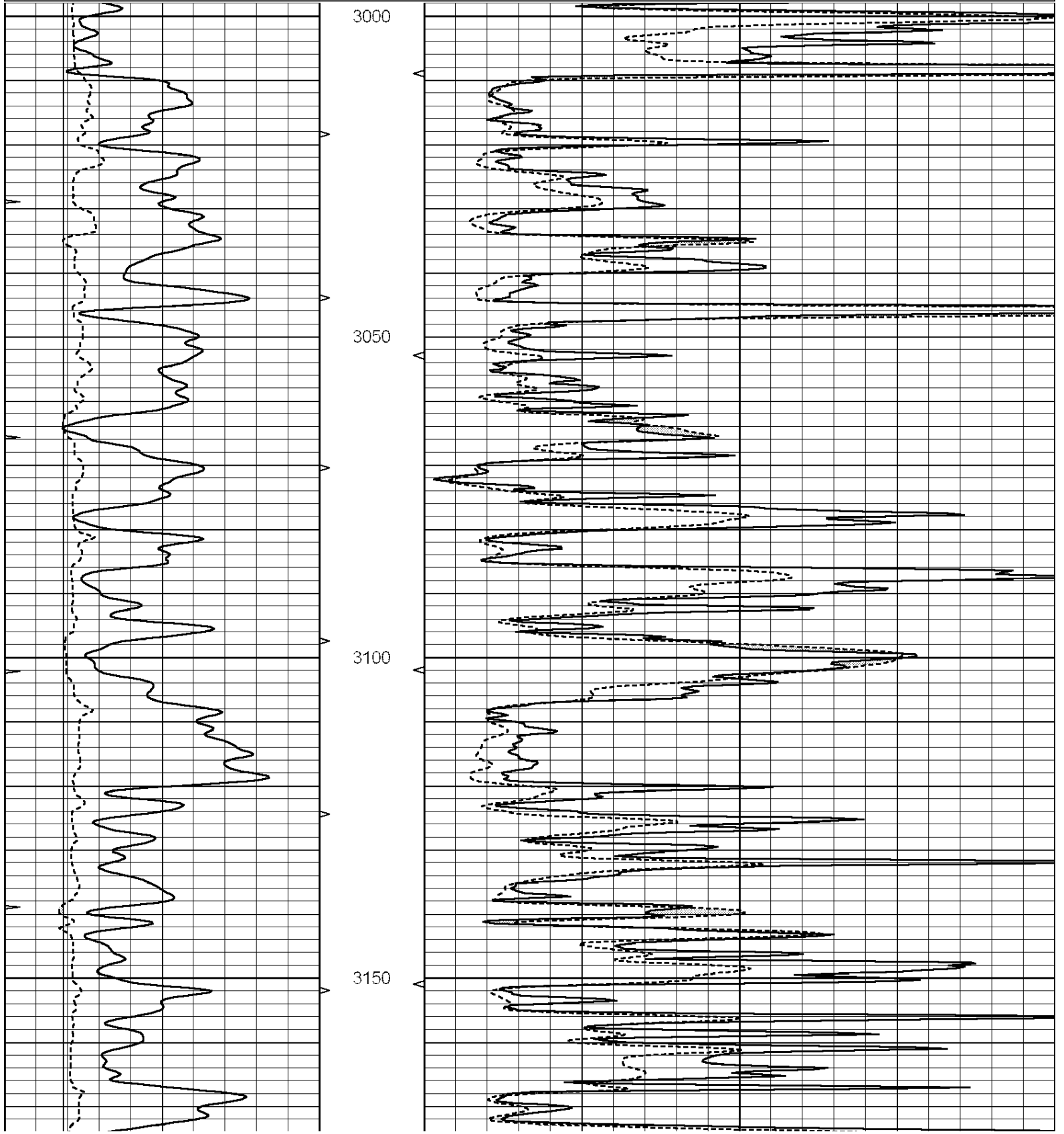


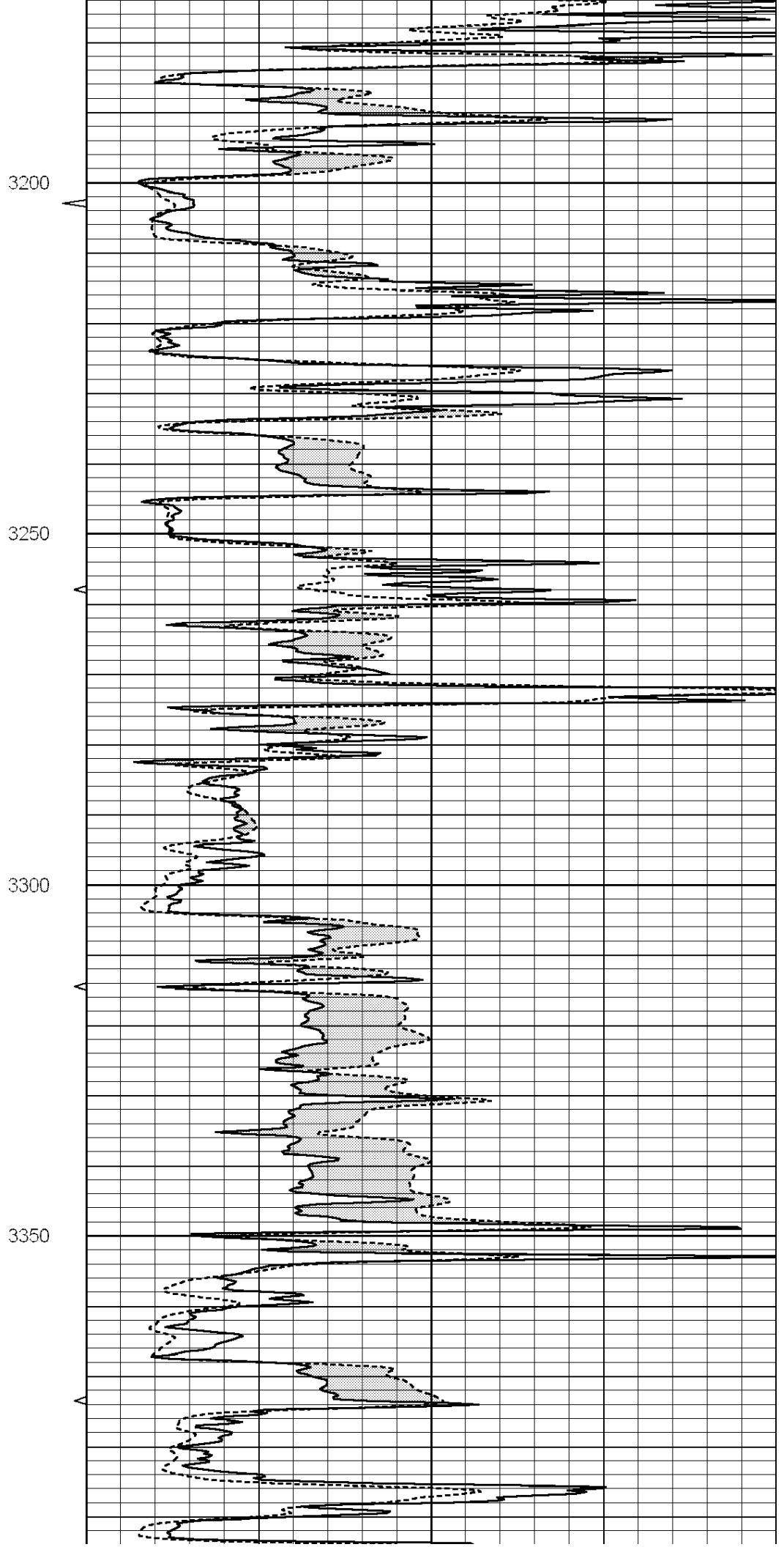
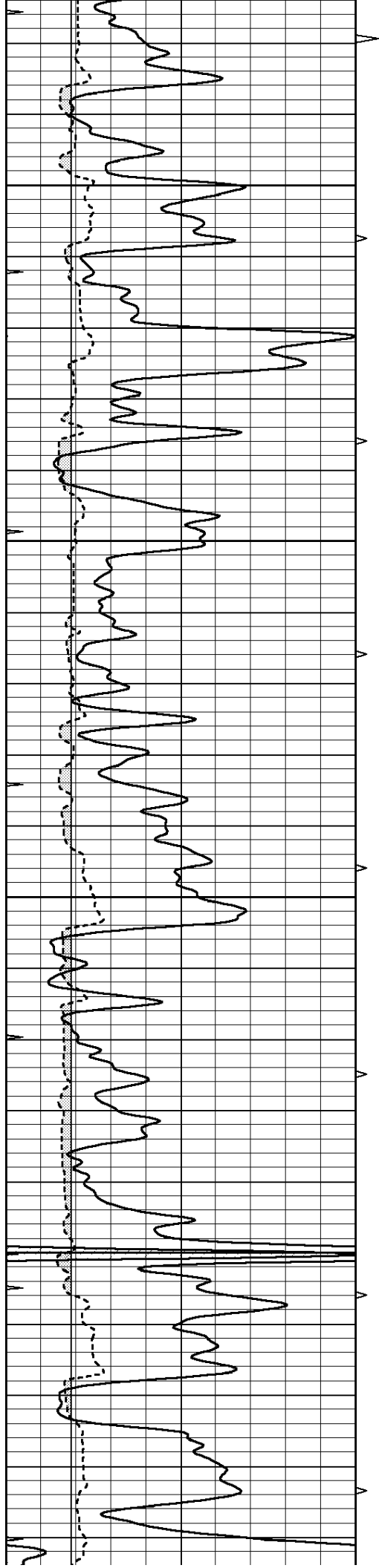
**SUPERIOR**  
Hays,  
Kansas

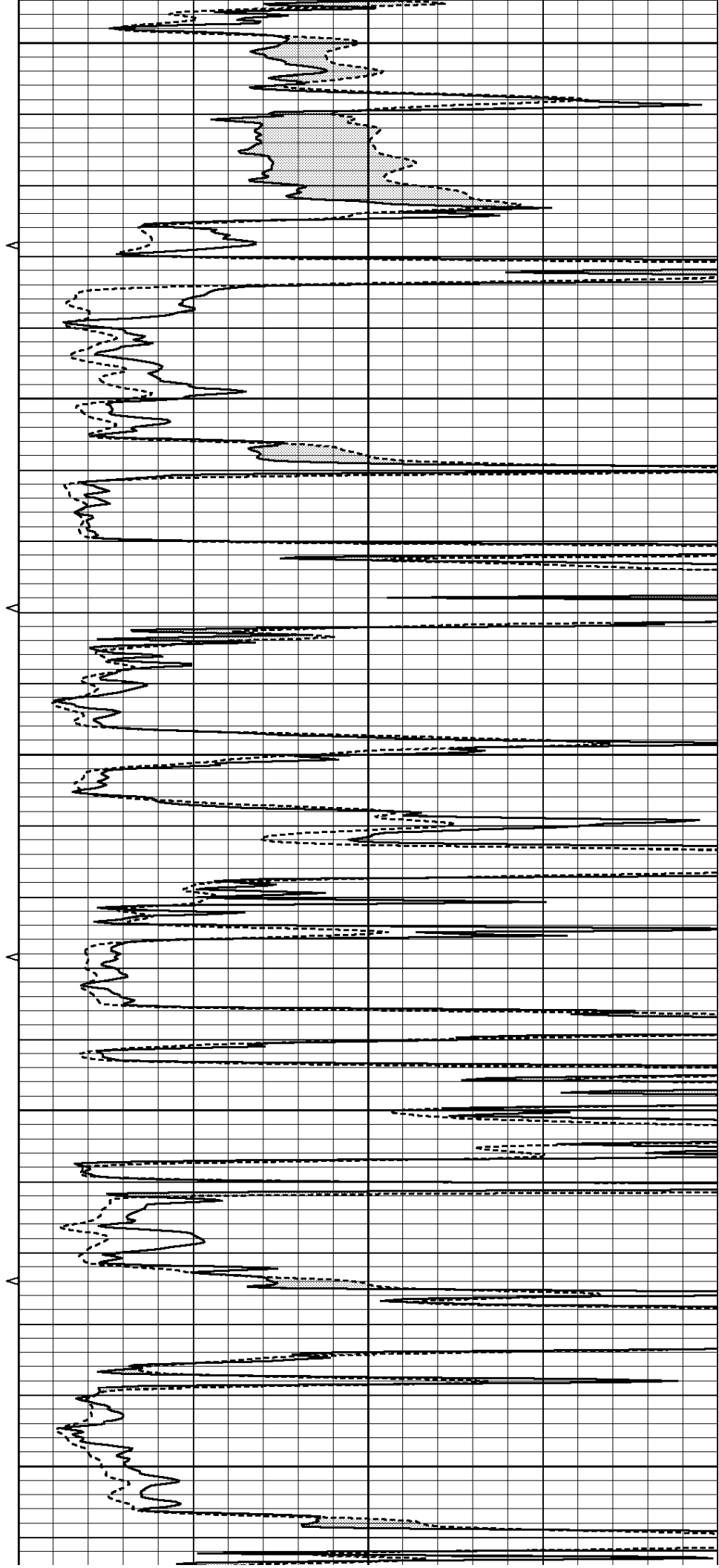
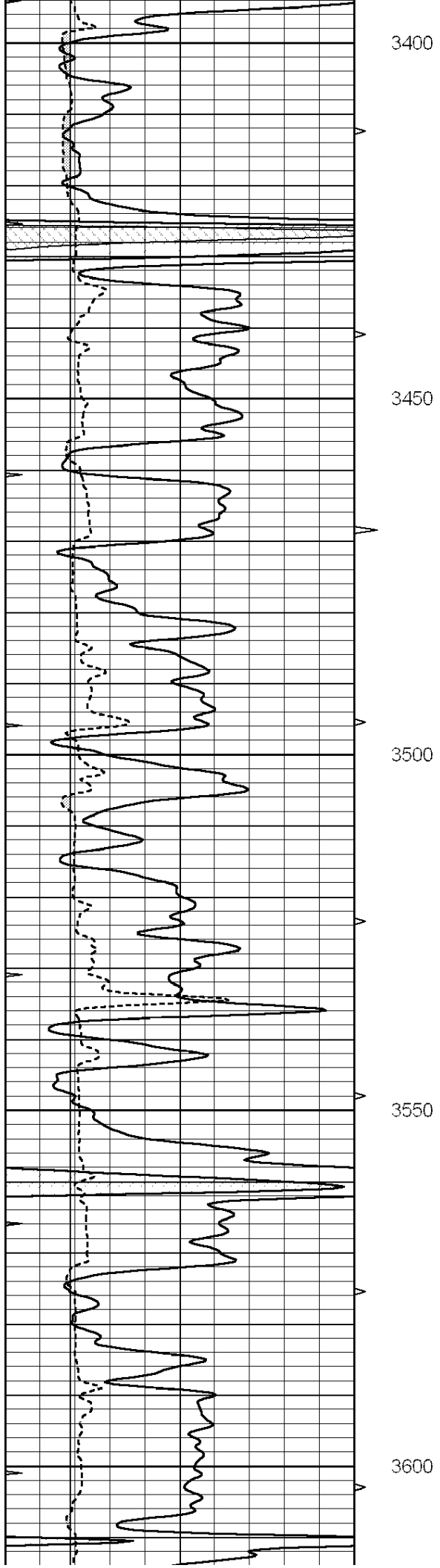
**MAIN SECTION**

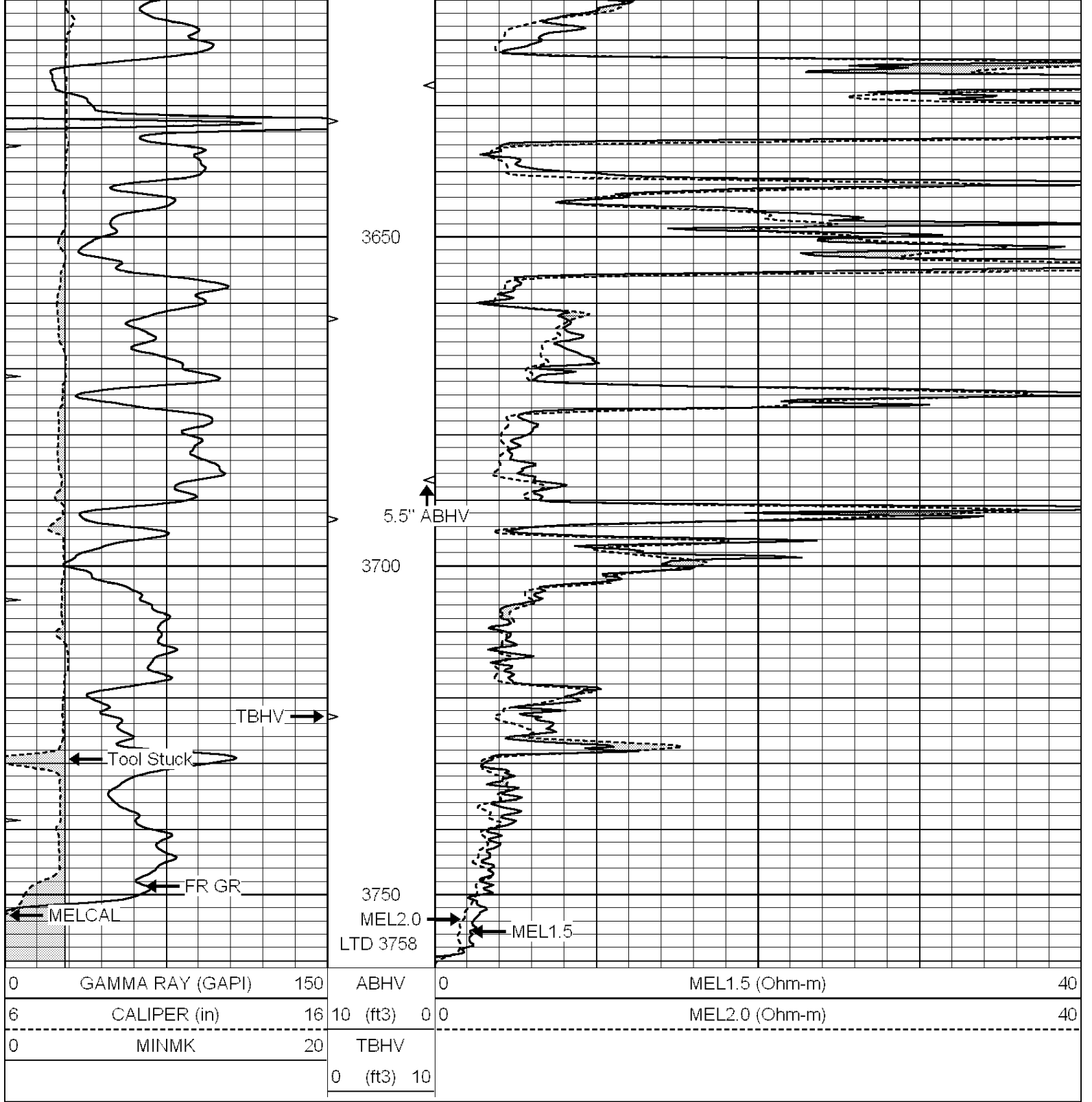
Database File: 006820pe.db  
 Dataset Pathname: pass5.5  
 Presentation Format: micro  
 Dataset Creation: Tue May 03 05:34:08 2011 by Calc Open-Cased 090629  
 Charted by: Depth in Feet scaled 1:240

0	GAMMA RAY (GAPI)	150	ABHV	0	MEL1.5 (Ohm-m)	40
6	CALIPER (in)	16	10 (ft3)	0	MEL2.0 (Ohm-m)	40
0	MINMK	20	TBHV			
			0 (ft3)	10		









SUPERIOR  
Hays,  
Kansas

# REPEAT SECTION

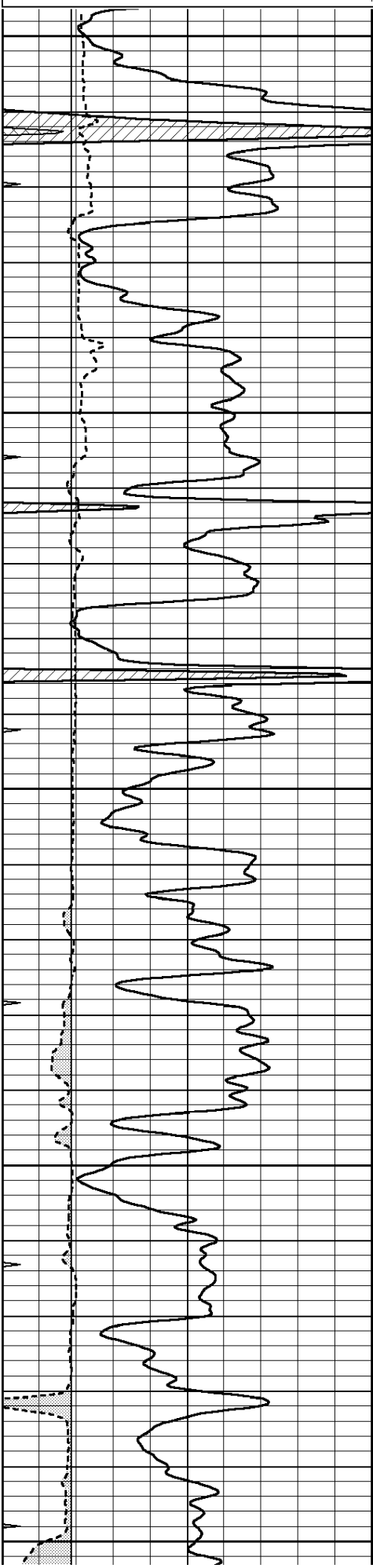
Database File: 006820pe.db  
 Dataset Pathname: pass4.5  
 Presentation Format: micro  
 Dataset Creation: Tue May 03 05:37:08 2011 by Calc Open-Cased 090629  
 Charted by: Depth in Feet scaled 1:240

0	GAMMA RAY (GAPI)	150	ABHV	0	MEL1.5 (Ohm-m)	40
6	CALIPER (in)	16	10 (ft3)	0 0	MEL2.0 (Ohm-m)	40

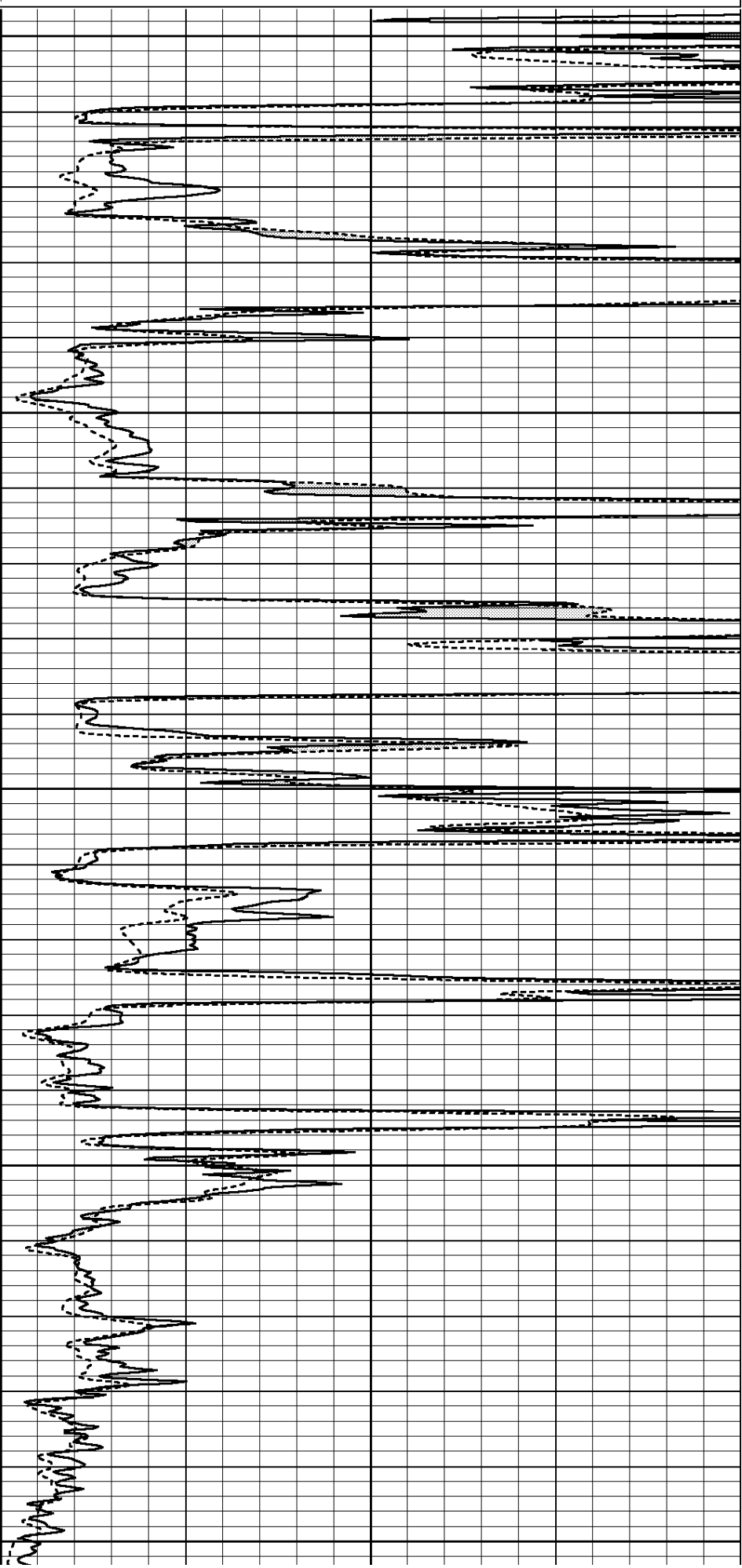
0 CALIPER (in) 10 20  
MINMK

10 (ft) 0 0  
TBHV  
0 (ft3) 10

WELLS (CHINA)



3550  
3600  
3650  
3700  
3750



0	GAMMA RAY (GAPI)	150	ABHV	0	MEL1.5 (Ohm-m)	40
6	CALIPER (in)	16	10 (ft3)	0	MEL2.0 (Ohm-m)	40
0	MINMK	20	TBHV			
			0 (ft3)	10		

### Calibration Report

Database File: 006820pe.db  
 Dataset Pathname: pass5.5  
 Dataset Creation: Tue May 03 05:34:08 2011 by Calc Open-Cased 090629

### MICRO Calibration Report

Serial Number: 2  
 Tool Model: PROBE  
 Performed: Tue May 03 05:03:20 2011

Caliper Calibration: Gain=4.684 Offset=2.454

	Low Cal	High Cal
References	6.000	13.500
Readings	0.757	2.358

1.5" Calibration: Gain=43.000 Offset=-1.000

	Low Cal	High Cal
References	0.000	20.000
Readings	0.065	1.210

2" Calibration: Gain=53.000 Offset=0.000

	Low Cal	High Cal
References	0.000	20.000
Readings	0.012	1.043

### Gamma Ray Calibration Report

Serial Number: GR4  
 Tool Model: OPEN  
 Performed: Tue May 03 05:03:07 2011

Calibrator Value: 200.0 GAPI

Background Reading:	0.0	cps
Calibrator Reading:	189.0	cps

Sensitivity: 0.8000 GAPI/cps