



ALL PRESENTATIONS AS PER CUSTOMER REQUEST  
 GRT, CNT, LDT AND PIT RUN IN COMBINATION.  
 CALIPERS ORIENTED ON X-Y AXIS.  
 2.71 G/CC USED TO CALCULATED POROSITY.  
 ANNULAR HOLE VOLUME CALCULATED USING 2.875 PRODUCTION CASING.  
 SFL AND SP STOPPED AT 176' DUE TO FLUID DEPTH  
 PORN DISABLED 166' DUE TO FLUID DEPTH

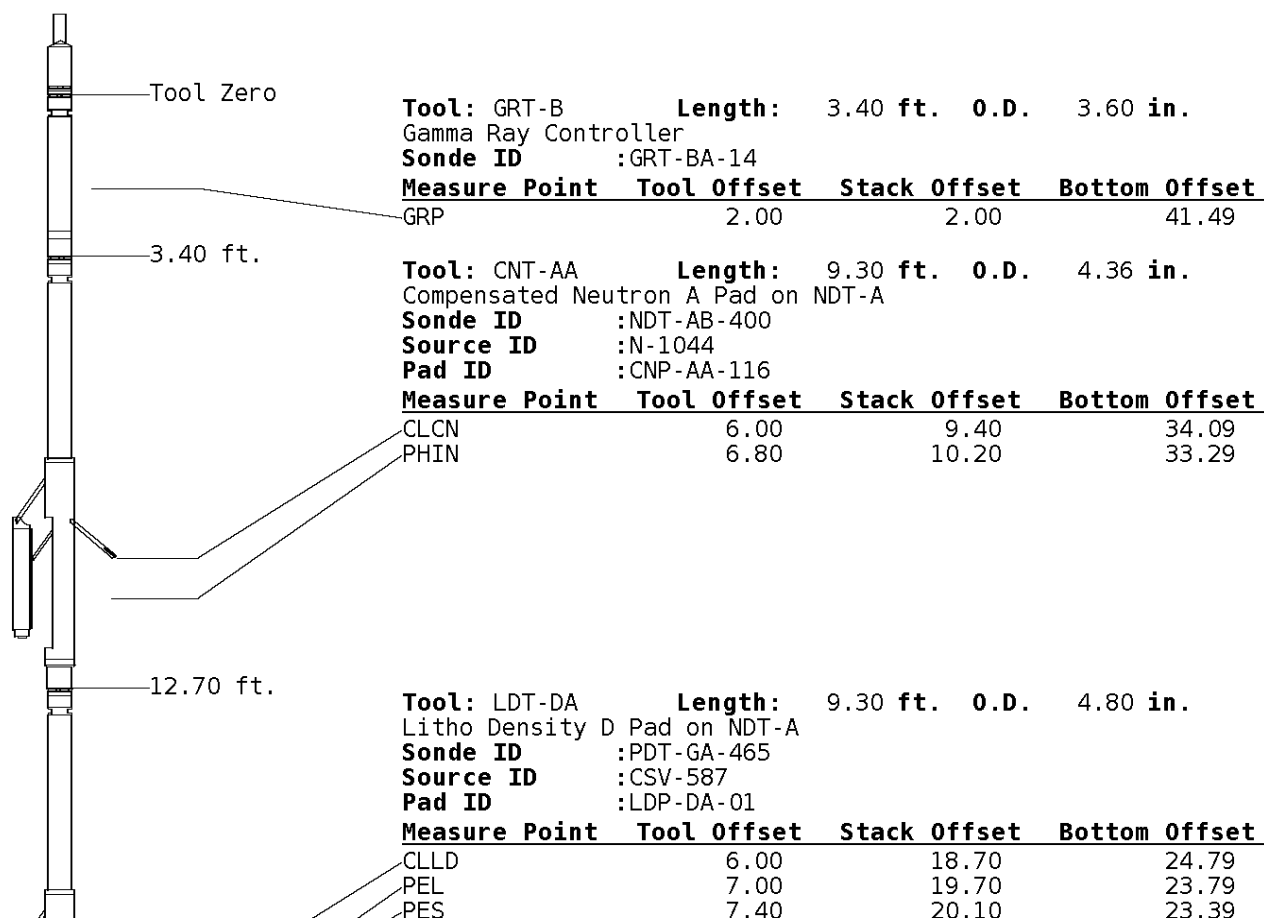
GRT: GRP.  
 CNT: PHIN, CLCNIN  
 LDT: PORL, LCORN, PECLN, LDENN, PORLLS, CLLDIN.  
 PIT: ILD, ILM, SPU, SFLAEC

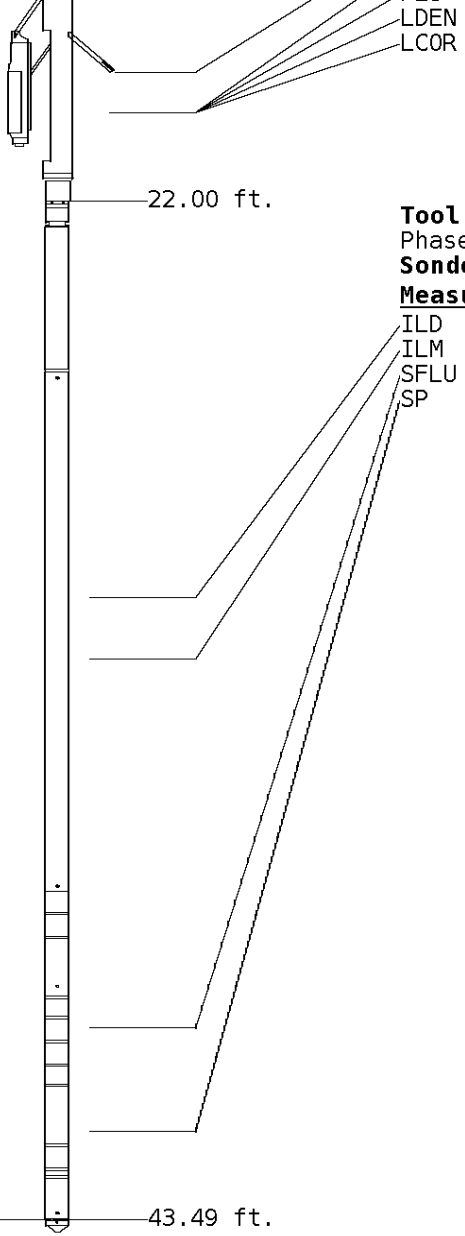
OPERATORS:

M. GARNER  
 J. T.

### Tool String Schematic

**Total Tool Length** - 43.49 ft.  
**Maximum Outside diameter** - 4.80 in.  
**Net Weight in Air** - 743.00 lbs.



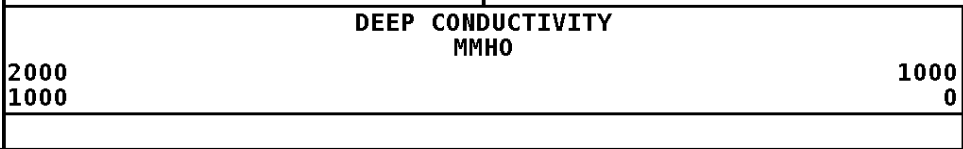
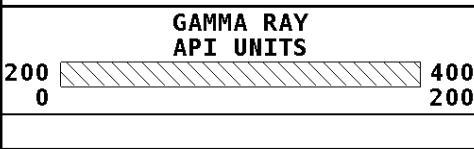
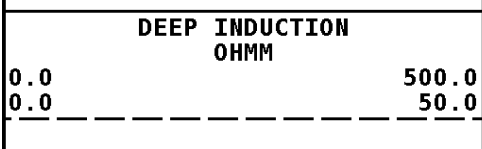
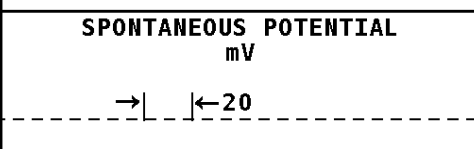
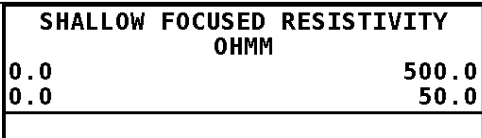
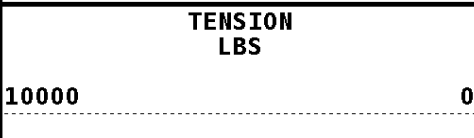


7.20 19.90 23.59  
 7.20 19.90 23.59

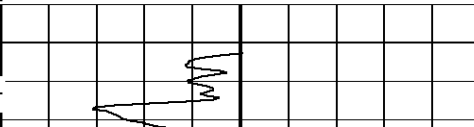
**Tool:** PIT-CA      **Length:** 21.49 ft.    **O.D.** 3.62 in.  
 Phased Dual Induction w/ RM & D  
**Sonde ID** :PIT-AB-18

Measure Point	Tool Offset	Stack Offset	Bottom Offset
ILD	8.92	30.92	12.56
ILM	10.10	32.10	11.39
SFLU	17.49	39.49	4.00
SP	20.60	42.60	0.88

**Well File:** RFP\_CLEAVER\_5-6A-2\_OCT25\_ST      **Scale:** 1:600  
**Segment:** V1.D1.S4 MAIN      **Acquired:** 2011-10/25 12:00 3.2.0-10220  
**Reference:** 0      **Processed:** 2011-10/25 12:00 3.2.0-10220

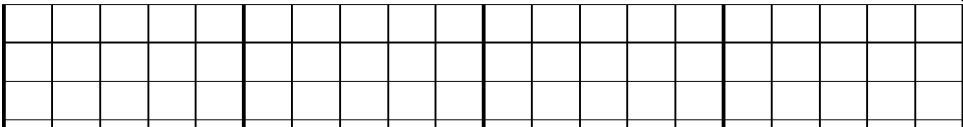


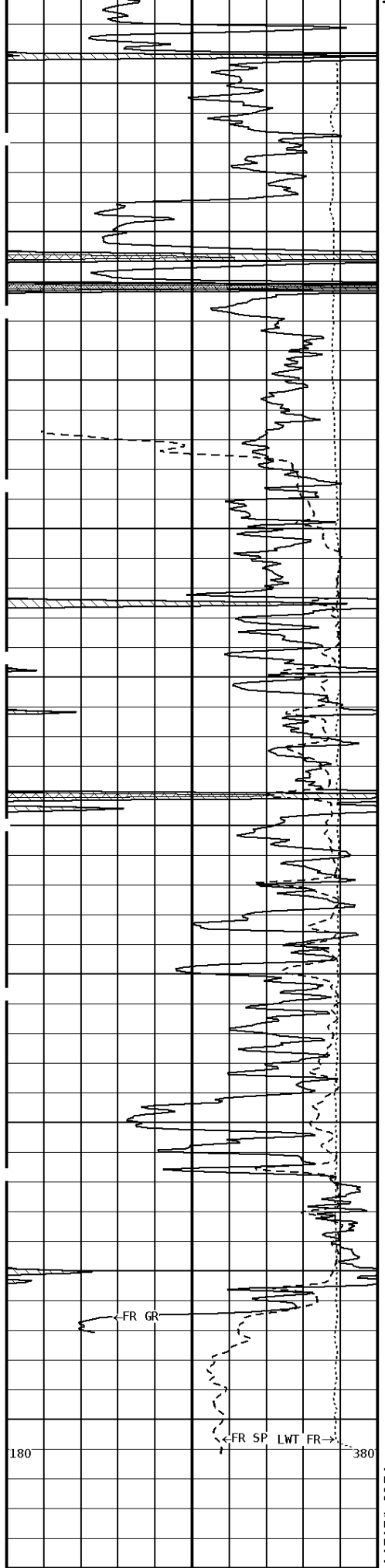
**1:600 SECTION**  
2 INCH



File #1.1.1

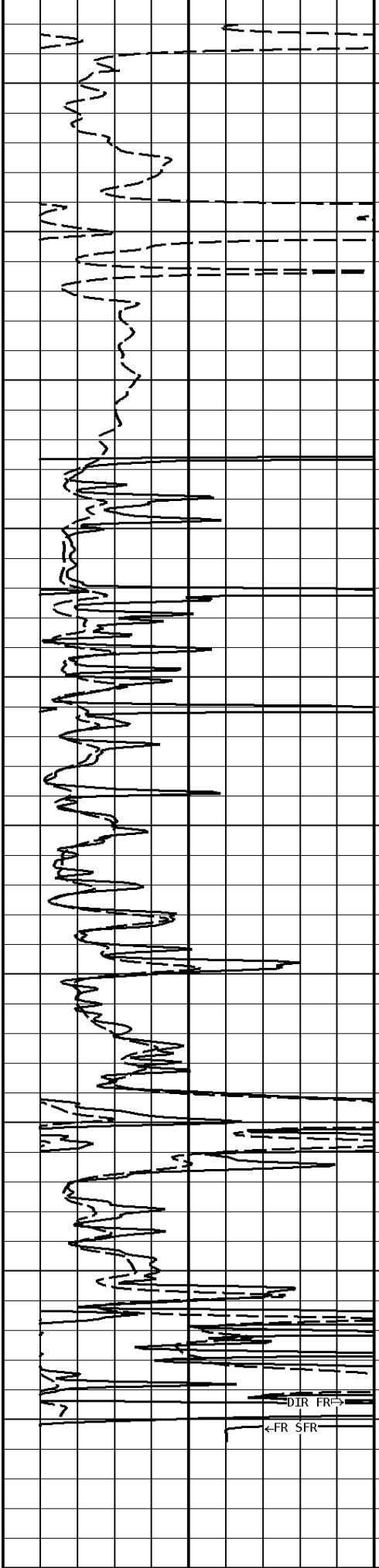
000





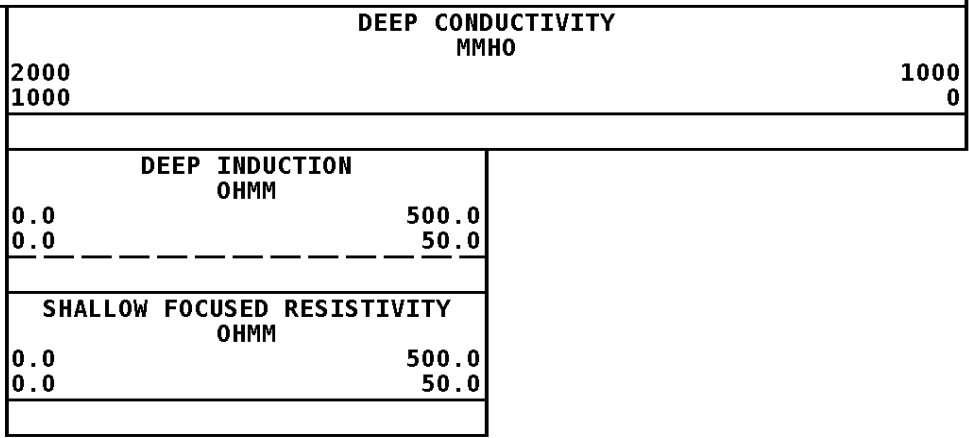
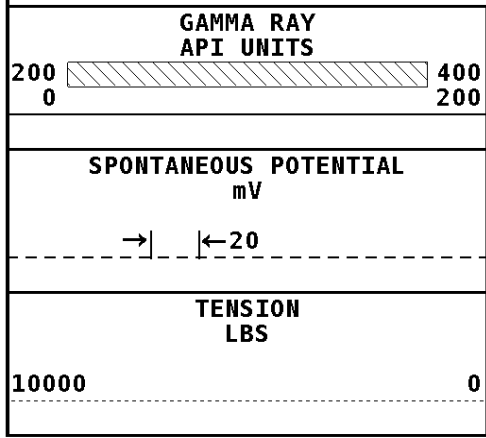
File #1.1.4

100  
200  
300  
400  
500  
508

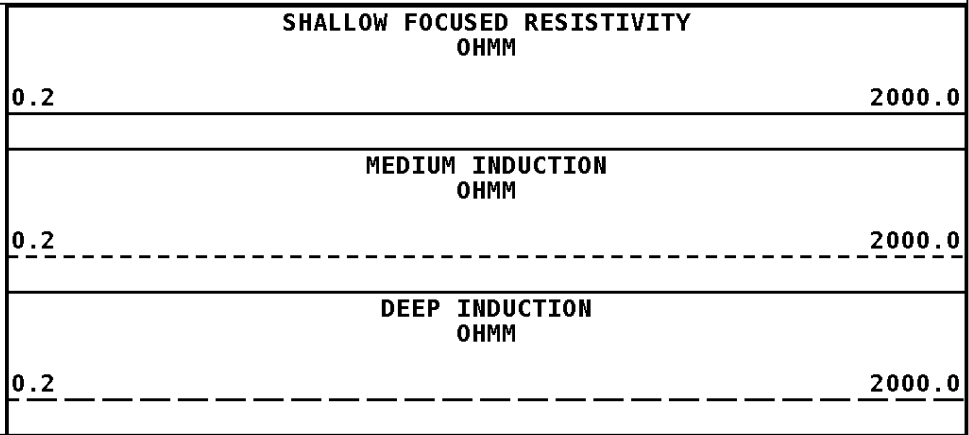
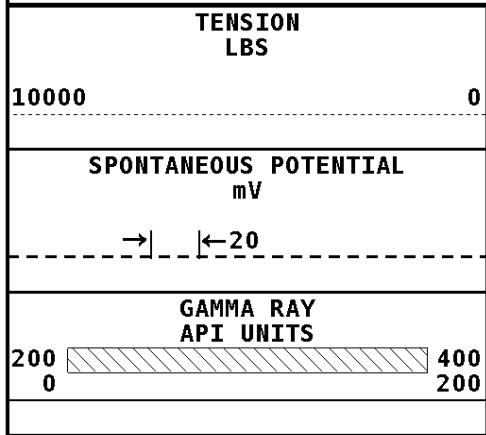


DIC FR

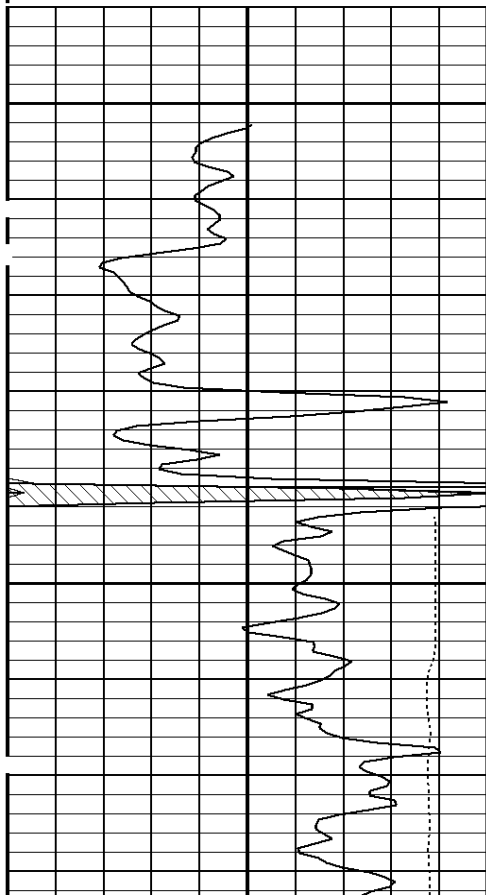
**1:600 SECTION**  
2 INCH



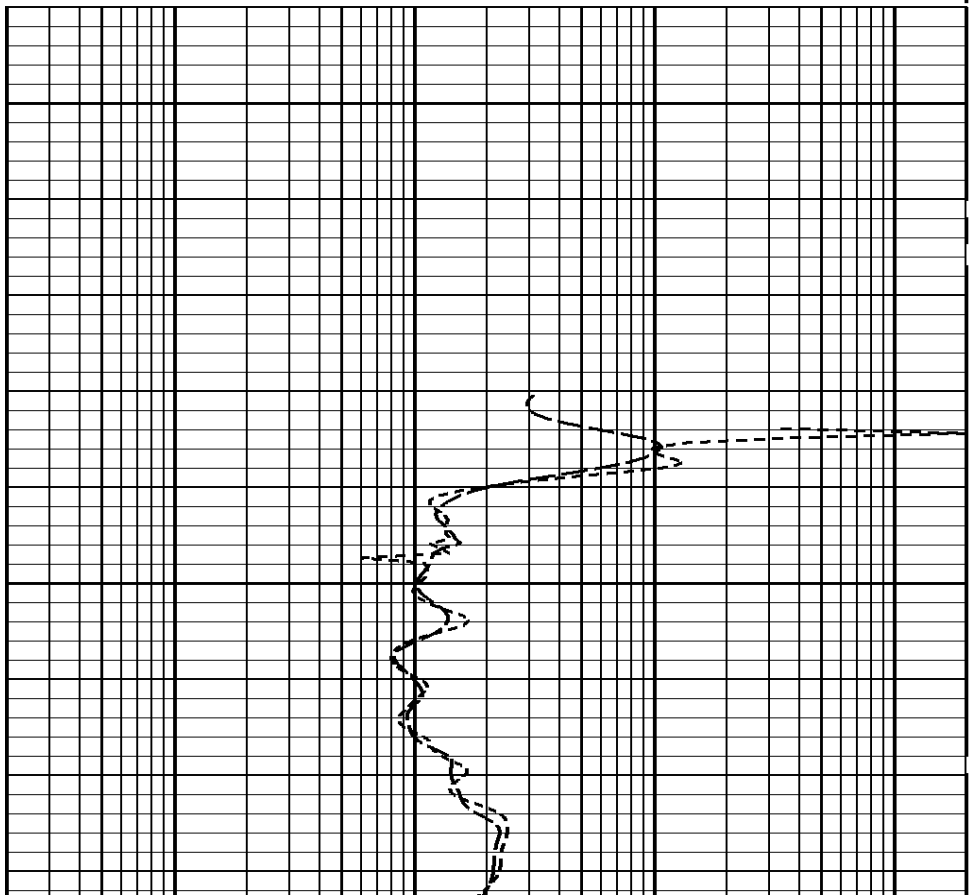
**Well File:** RFP\_CLEAVER\_5-6A-2\_OCT25\_ST **Scale:** 1:240  
**Segment:** V1.D1.S4 MAIN **Acquired:** 2011-10/25 12:00 3.2.0-10220  
**Reference:** 0 **Processed:** 2011-10/25 12:00 3.2.0-10220

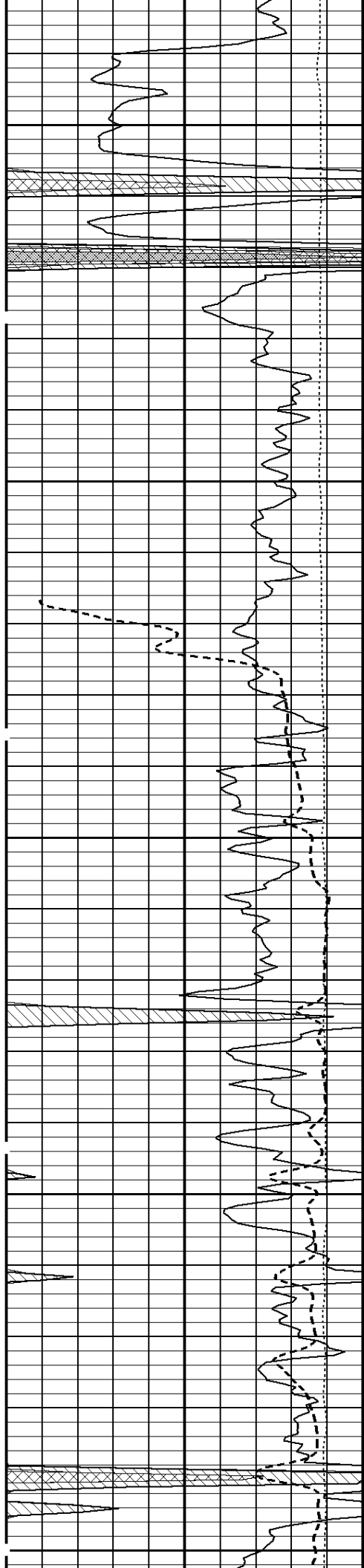


**1:240 MAIN SECTION**



000

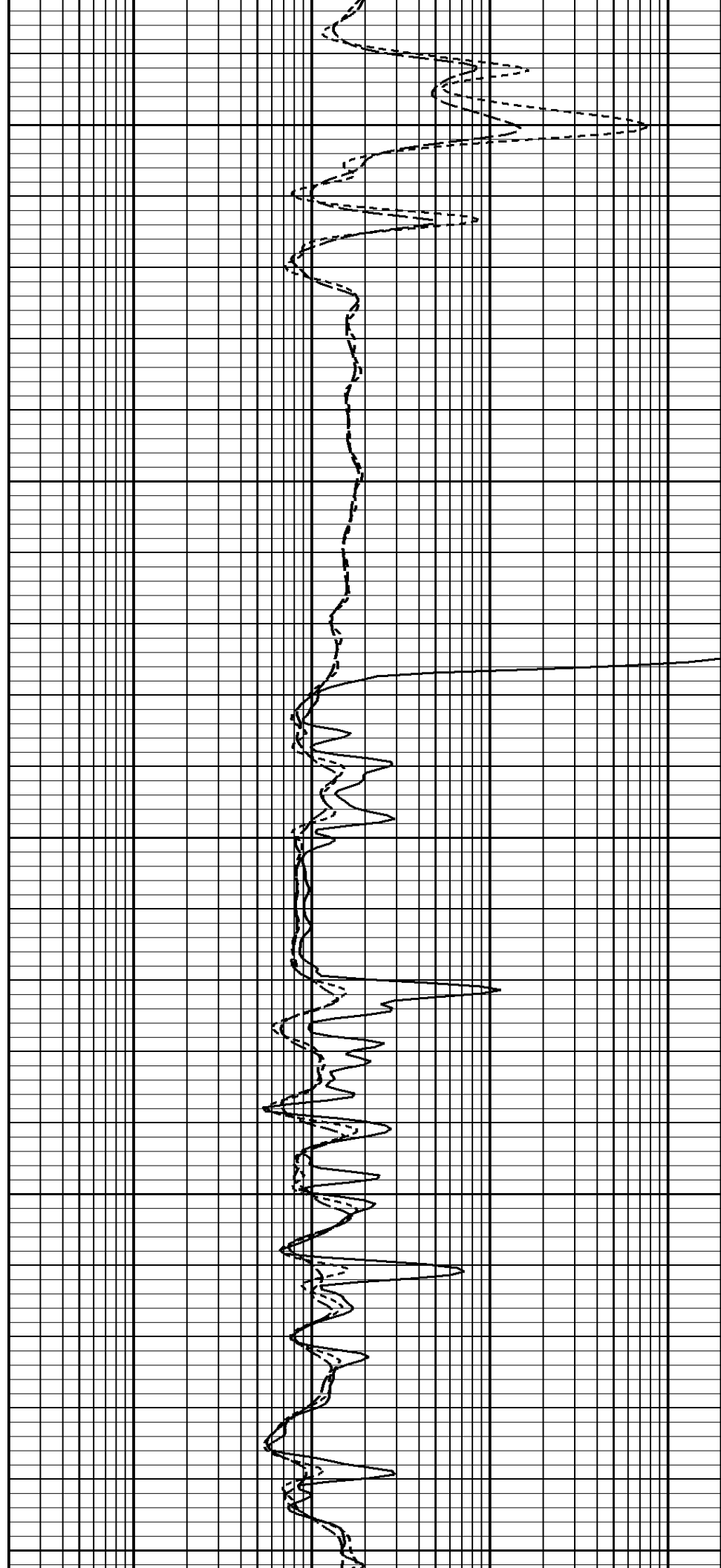


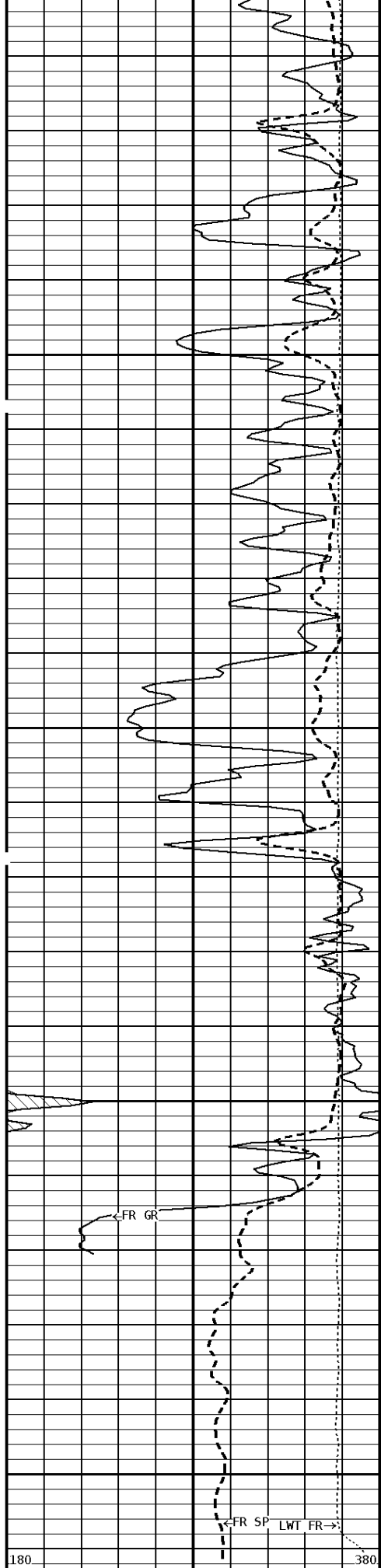


100

200

300





400

500

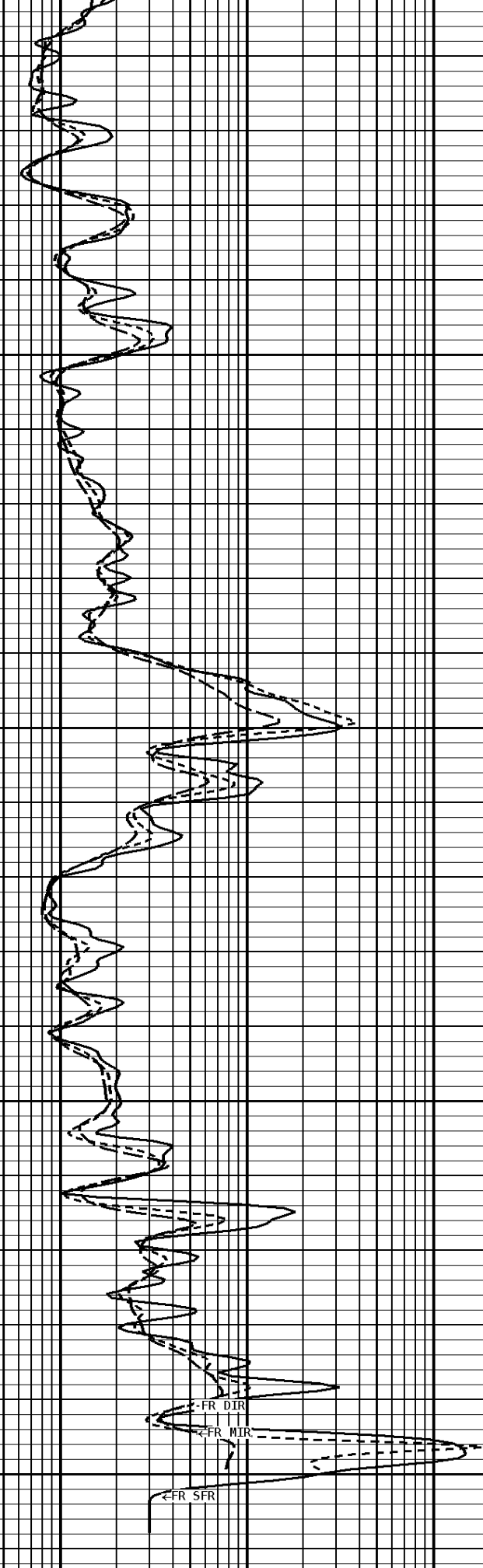
508

180

380

←FR GR

←FR SP LWT FR→



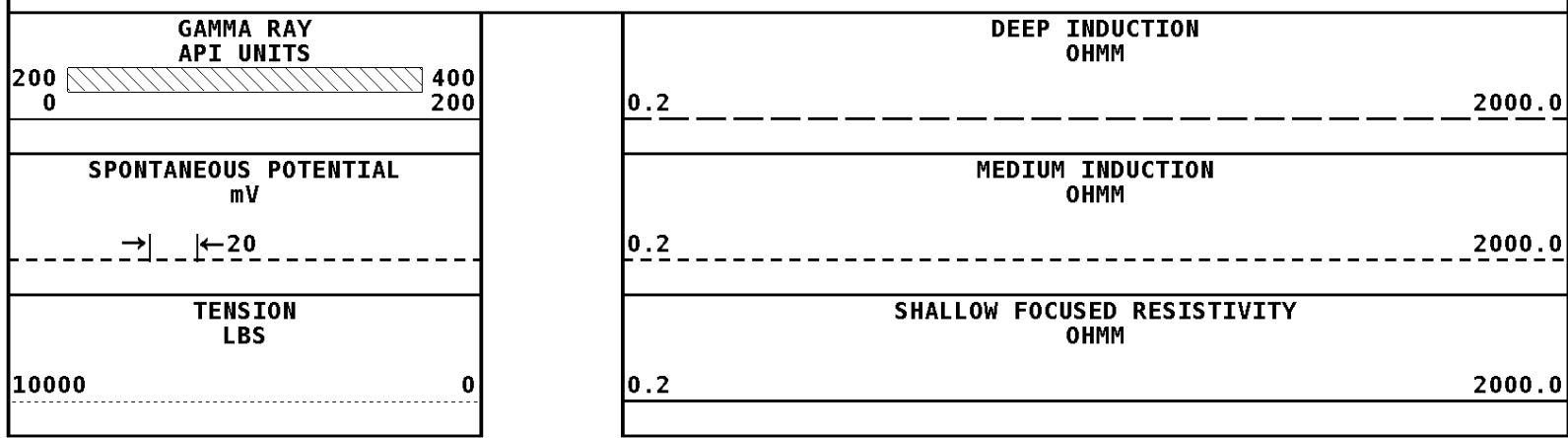
←FR DIR

←FR MIR

←FR SFR

File #1.1.4

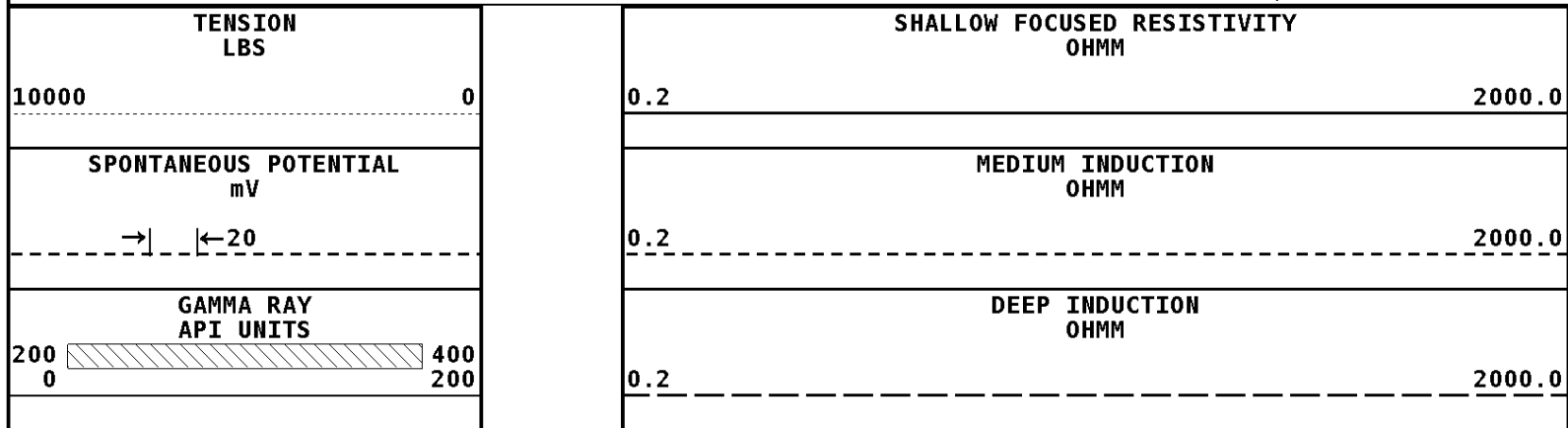
### 1:240 MAIN SECTION



#### \* Borehole Zone Factors \*

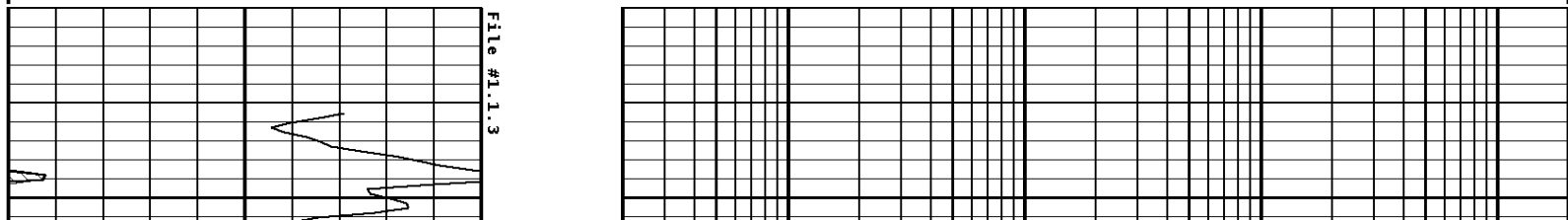
<b>Zone 1</b>	<b>99999.0 to</b>	<b>0.0 Feet</b>
Drill Bit Size _____		5.875 in
BHT Depth _____		512.000 ft
Borehole Temperature _____		73.0 degF
Temperature Gradient _____		1.00 DFHF
Resistivity Of Mud _____		2.100 ohm/m
Standoff _____		1.5
Resistivity Of Mud Temperature _____		73.00 degF

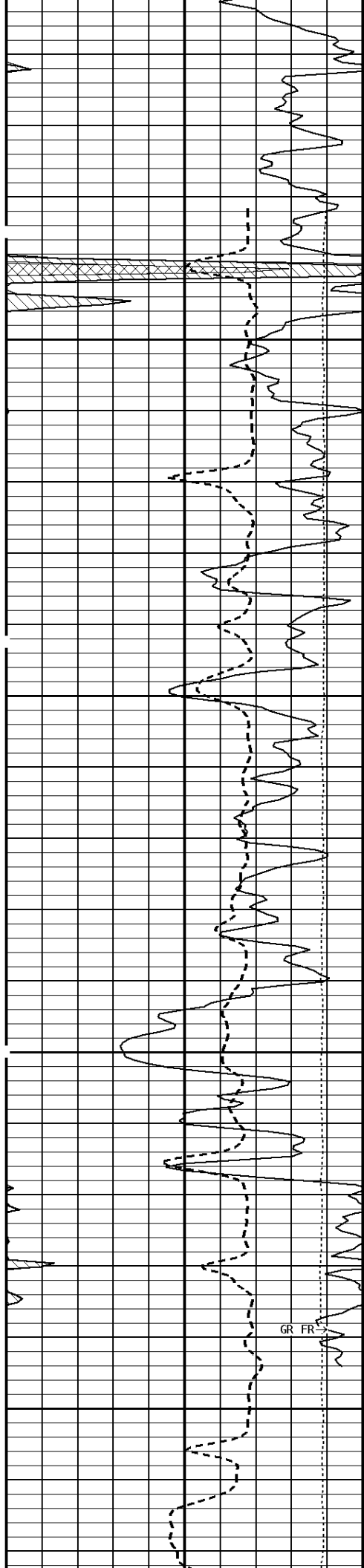
<b>Well File:</b> RFP_CLEAVER_5-6A-2_OCT25_ST	<b>Scale:</b> 1:240
<b>Segment:</b> V1.D1.S3 Reprocess REPEAT	<b>Acquired:</b> 2011-10/25 11:52 3.2.0-10220
<b>Reference:</b> 0	<b>Processed:</b> 2011-10/25 11:59 3.2.0-10220



### 1:240 REPEAT SECTION

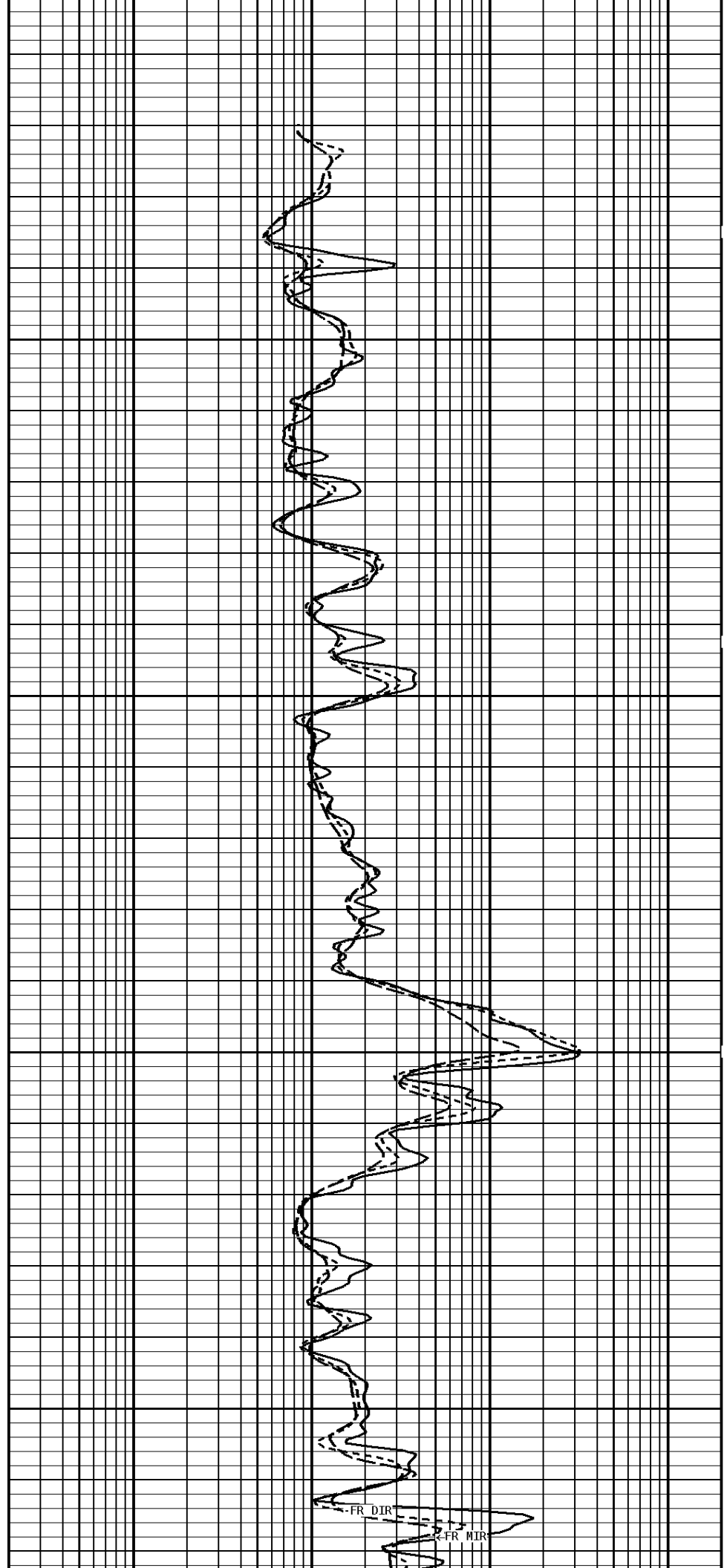
File #1.1.3

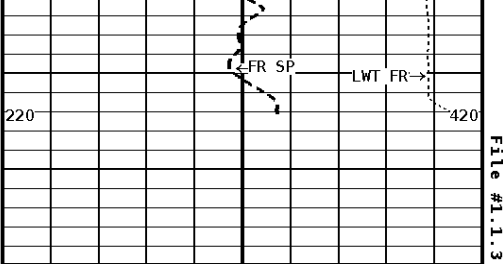




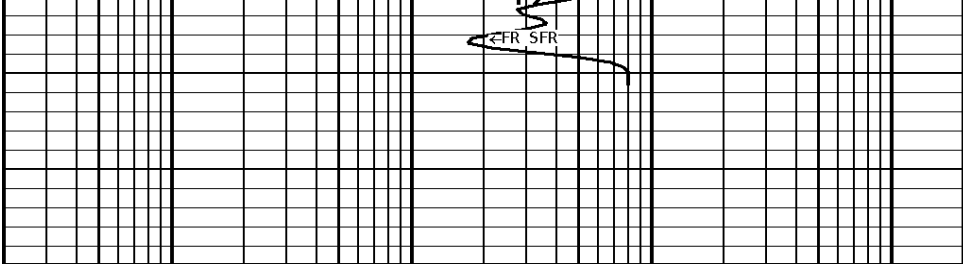
300

400

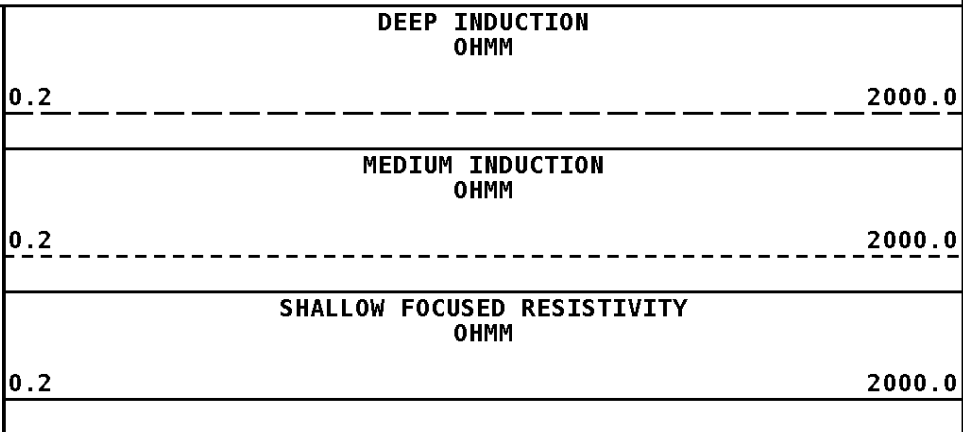
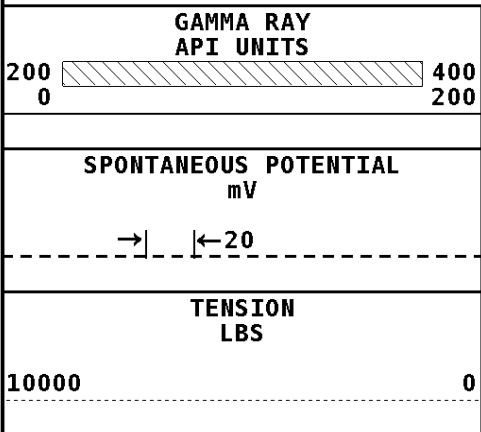




481



**1:240 REPEAT SECTION**



**\* Borehole Zone Factors \***

Zone 1 99999.0 to 0.0 Feet		
Drill Bit Size	_____	5.875 in
BHT Depth	_____	512.000 ft
Borehole Temperature	_____	73.0 degF
Temperature Gradient	_____	1.00 DFHF
Resistivity Of Mud	_____	2.100 ohm/m
Standoff	_____	1.5
Resistivity Of Mud Temperature	_____	73.00 degF

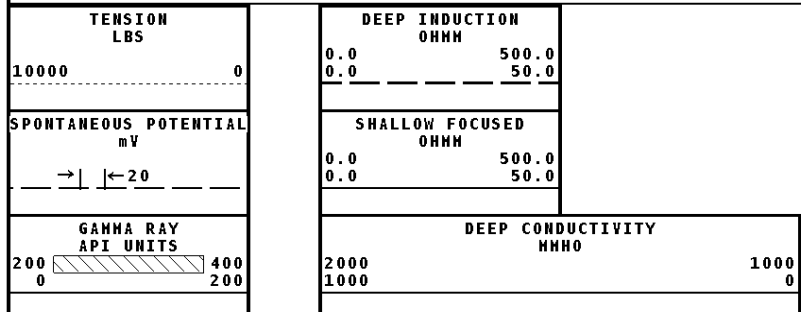
**\* Calibration Summary \***

Shop Calibration GRT-B					
Performed : 16-MAY-2011			Time : 09:49		
Sensor Suite : GR-GR5			ID : GRT-BA-14		
	Measured	Units	Calibrated	Units	
GR	Background	Jig	Jig	GRAPI	
	50	361	175		

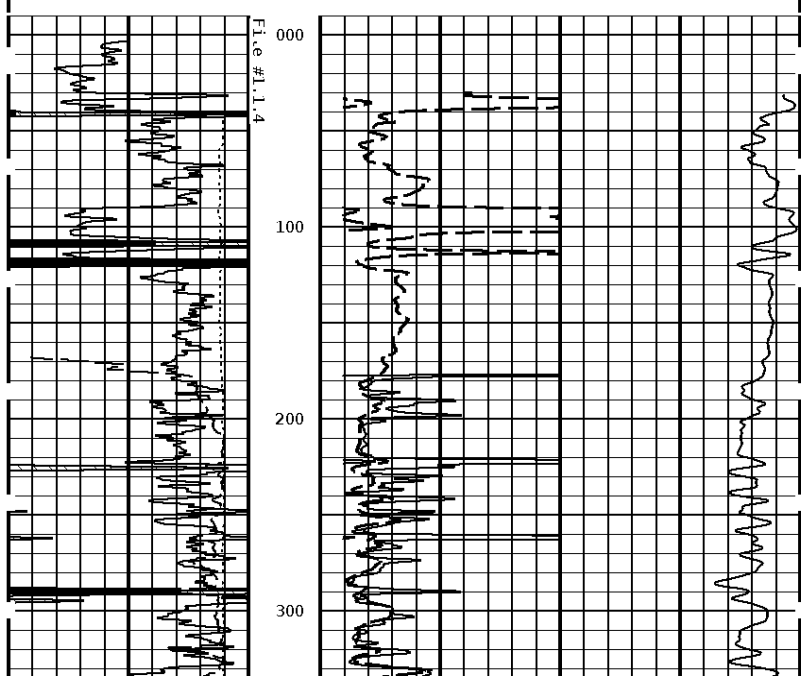
Shop Calibration PIT-CA					
Performed : 18-May-2009			Time : 10:06		
Sensor Suite : P-IND-T			ID : PIT-AB-18		
Medium					
	Measured		Calibrated		Units
	R	X	R	X	
Air	131380	130013	0.2	0.4	MMHOS
Zero	131067	131066	0.0	0.0	MMHOS
Reference	252628	252684	5000.0	5000.0	MMHOS
Loop	151831	174542	2672.1	989.9	MMHOS
Sonde Error			-2.0	-4.3	MMHOS
Cond			5000.0	5000.0	MMHOS
Deep					
	Measured		Calibrated		Units
	R	X	R	X	
Air	129385	131252	0.1	0.1	MMHOS
Zero	131079	131072	0.0	0.0	MMHOS
Reference	230616	232102	2000.0	2000.0	MMHOS
Loop	149042	174745	1256.1	466.1	MMHOS
Sonde Error			-3.3	0.2	MMHOS
Cond			2000.0	2000.0	MMHOS

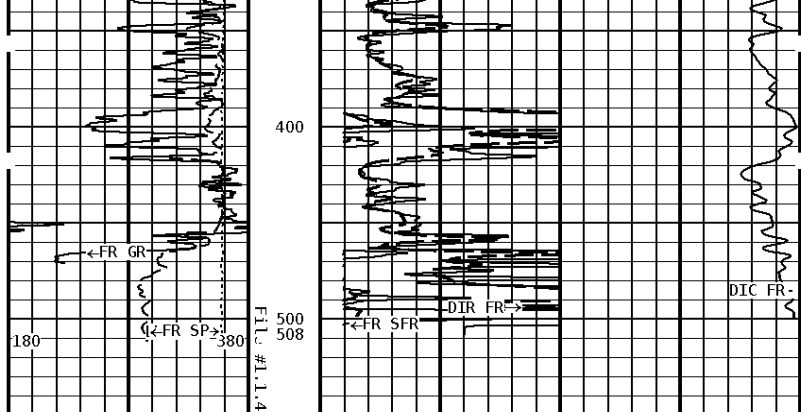
Temperature						
Measured		Calibrated				Units
Low	High	Low	High			DEGF
16980.0	56920.0	70.0	350.0			
Performed : 18-May-2009			Time : 10:04			
Sensor Suite : SFL			ID : PIT-AB-18			
Internal						
Measured		Calibrated				Units
Zero	Reference	Zero	Reference			
Im	32765.1	50517.2	0.0	7028.0	uA	
Ib	32772.1	50309.4	0.0	1750.0	mA	
MOM1	32830.8	57160.2	0.0	175.0	mV	
Equivalent SFL				43.97	OHMM	
Performed : 18-May-2009			Time : 09:50			
Sensor Suite : P-SP			ID : PIT-AB-18			
Internal						
Measured		Calibrated				Units
Zero	Reference	Zero	Reference			
	32790.5	58989.2	0.0	1000.0	mV	
Performed : 20-Dec-2007			Time : 12:53			
Sensor Suite : P-RMUD			ID : PIT-AB-18			
Internal						
Measured		Calibrated				Units
Zero	Reference	Zero	Reference			
Rmi	0.0	238.4	0.0	290.6	mA	
Rmv	0.0	198.0	0.0	290.6	mV	
Equivalent Rm				0.9037	OHMM	

Well File: RFP\_CLEAVER 5-6A-2\_OCT25\_ST      Scale: 1:1200  
Segment: V1.D1.S4 MAIN      Acquired: 2011-10/25 12:00 3.2.0-10220  
Reference: 0      Processed: 2011-10/25 12:00 3.2.0-10220



**1:1200 MAIN SECTION**





**1:1200 MAIN SECTION**

