



DIGITAL LOG (785) 625-3858

Dual Compensated Porosity Log

15-095-22,238-00-00

API No. 15-095-22,238-00-00

Company **Edmiston Oil Company, Inc.**
 Well **Price No. 2**
 Field **Spivey-Grabs-Basil**
 County **Kingman** State **Kansas**

Location **990' FSL & 1,140' FEL**

Sec: **24** Twp: **30S** Rge: **10W**

Other Services **DIL**

Permanent Datum **Ground Level** Elevation **1728**
 Log Measured From **Kelly Bushing** **10 Ft. Above Perm. Datum**
 Drilling Measured From **Kelly Bushing**

Elevation **K.B. 1738**
D.F. 1728
G.L. 1728

| | | |
|------------------------|-------------|--|
| Date | 12/15/2011 | |
| Run Number | One | |
| Type Log | CNL / CDL | |
| Depth Driller | 4510 | |
| Depth Logger | 4511 | |
| Bottom Logged Interval | 3490 | |
| Top Logged Interval | 3400 | |
| Type Fluid In Hole | Chemical | |
| Salinity, PPM CL | 5500 | |
| Density | 9.4 | |
| Level | Full | |
| Max. Rec. Temp. F | 121 | |
| Operating Rig Time | 2 1/2 Hours | |
| Equipment -- Location | 10 Hays | |
| Recorded By | J. Long | |
| Witnessed By | Max Lovley | |

| Borehole Record | | | | Casing Record | | | |
|-----------------|-------|------|------|---------------|------|------|-----|
| Run No. | Bit | From | To | Size | Wgt. | From | To |
| 1 | 12.25 | 00 | 309 | 8.625 | 24# | 00 | 309 |
| 2 | 7.875 | 309 | 4510 | | | | |
| | | | | | | | |
| | | | | | | | |
| | | | | | | | |
| | | | | | | | |
| | | | | | | | |
| | | | | | | | |
| | | | | | | | |

<<< Fold Here >>>

All interpretations are opinions based on inferences from electrical or other measurements and we cannot and do not guarantee the accuracy or correctness of any interpretation, and we shall not, except in the case of gross or willful negligence on our part, be liable or responsible for any loss, costs, damages, or expenses incurred or sustained by anyone resulting from any interpretation made by any of our officers, agents or employees. These interpretations are also subject to our general terms and conditions set out in our current Price Schedule.

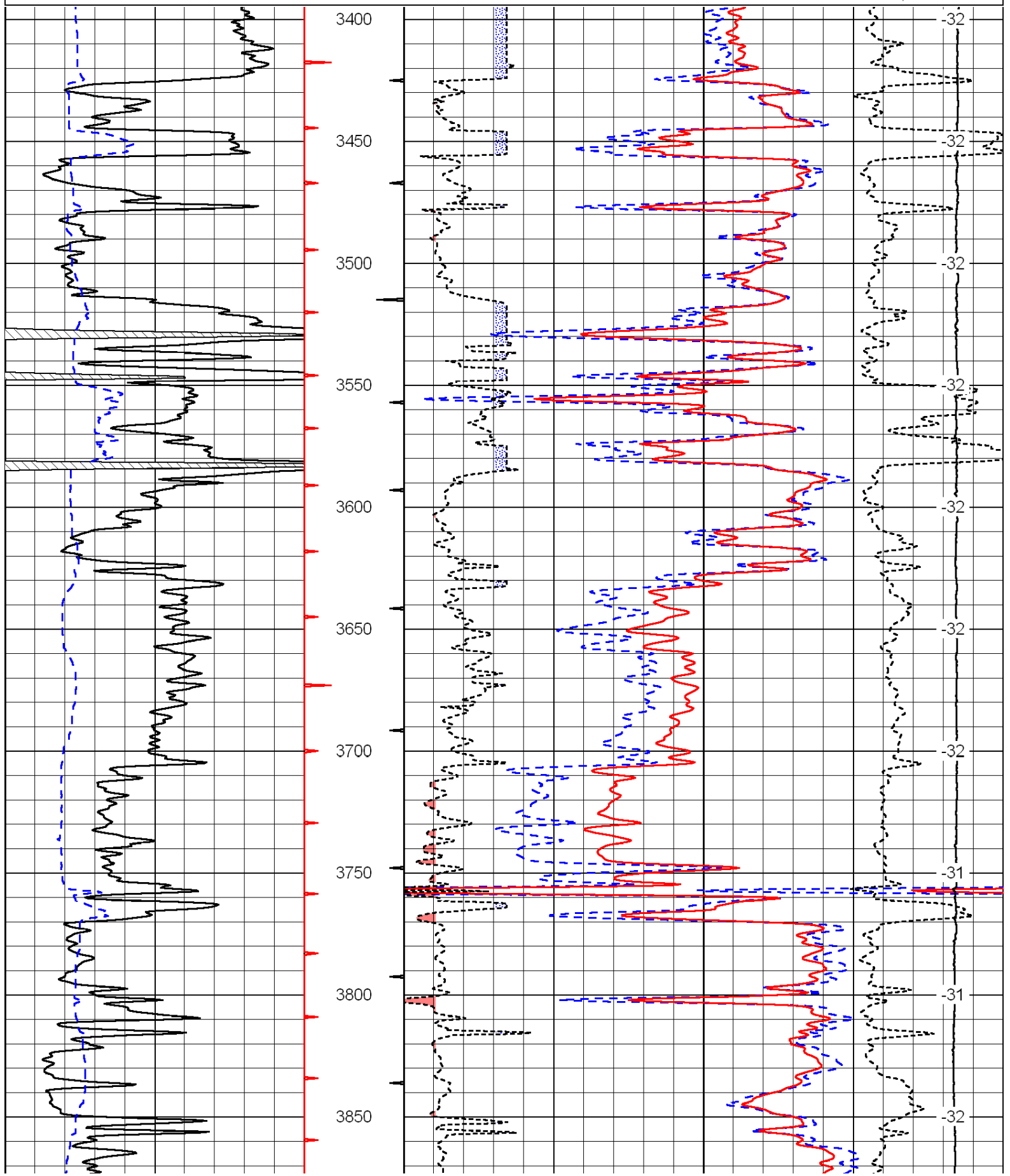
Comments

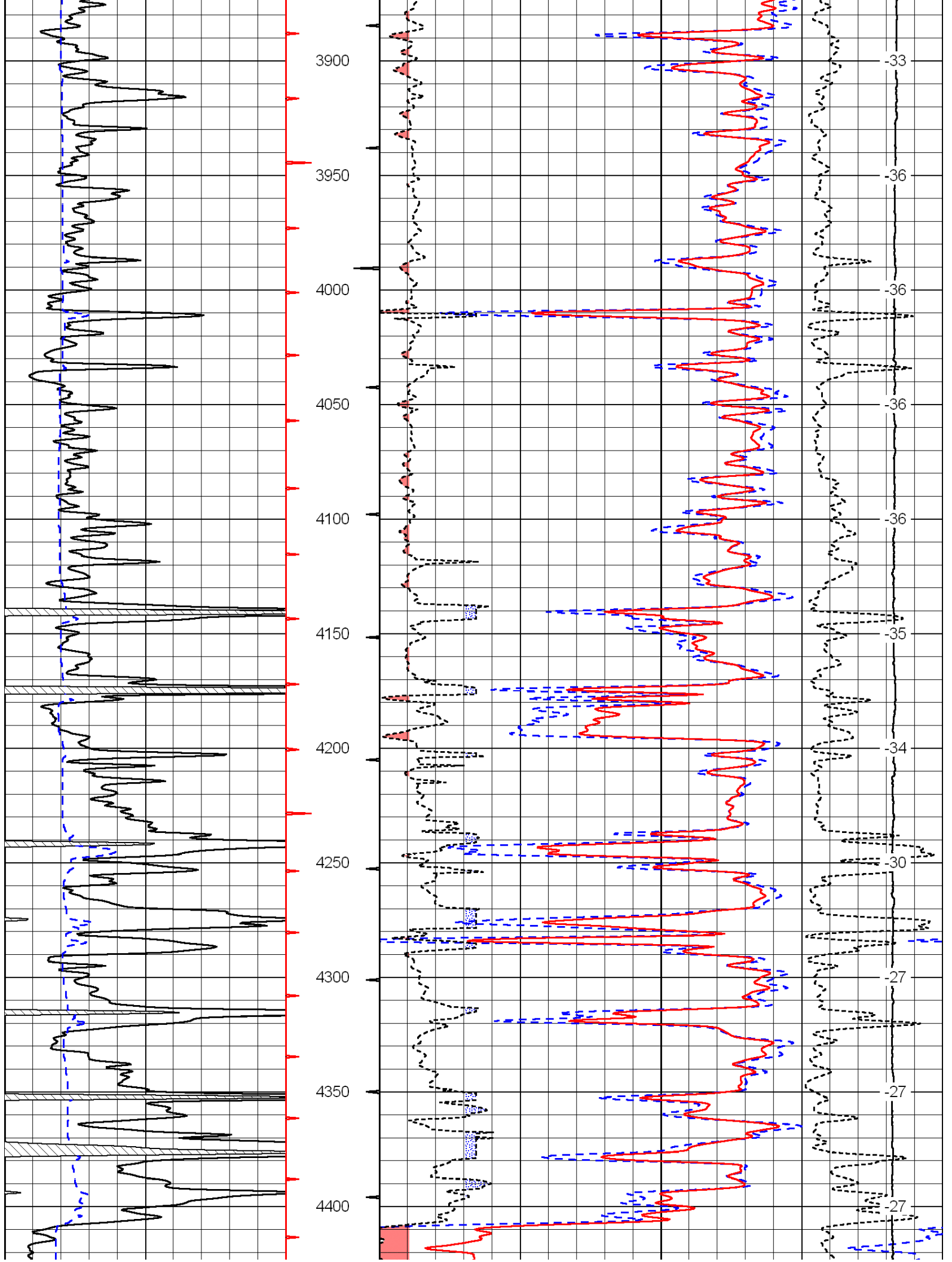
Thank you for using Log-Tech, Inc.
 (785) 625-3858

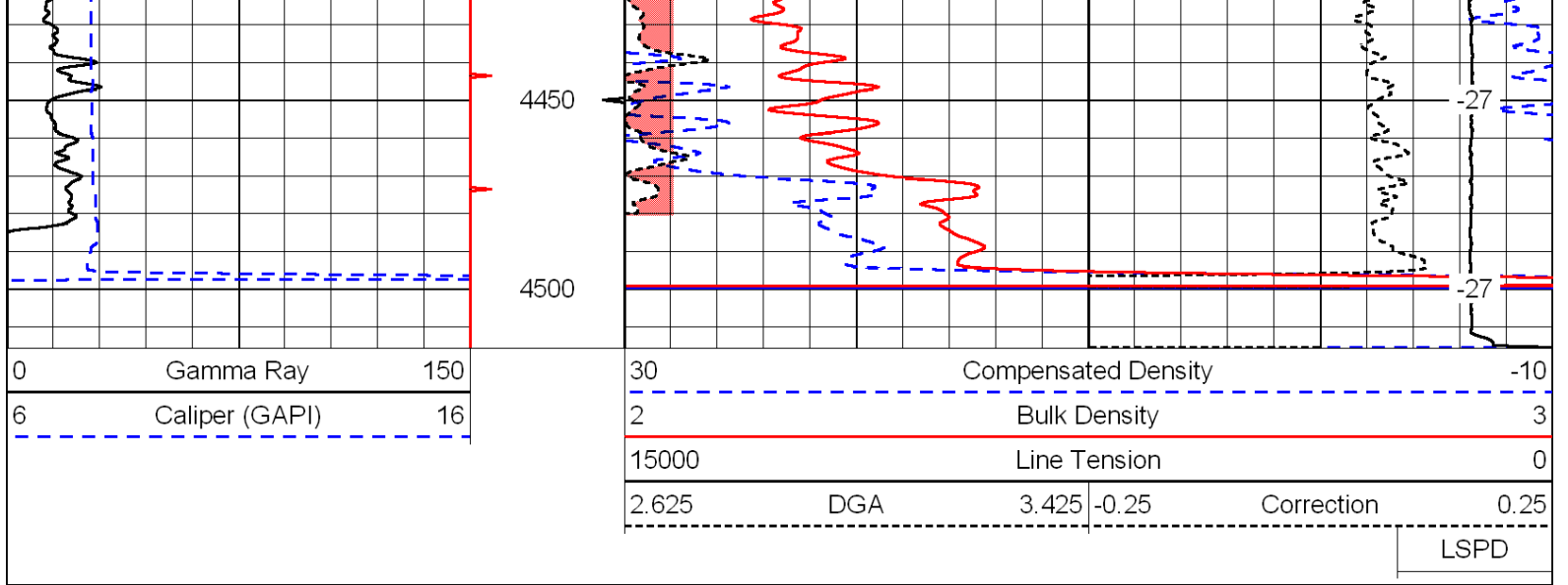
Zenda, 4 West, 1 3/4 South, West Into

| | | |
|---|----------------|-----|
| 0 | Gamma Ray | 150 |
| 6 | Caliper (GAPI) | 16 |

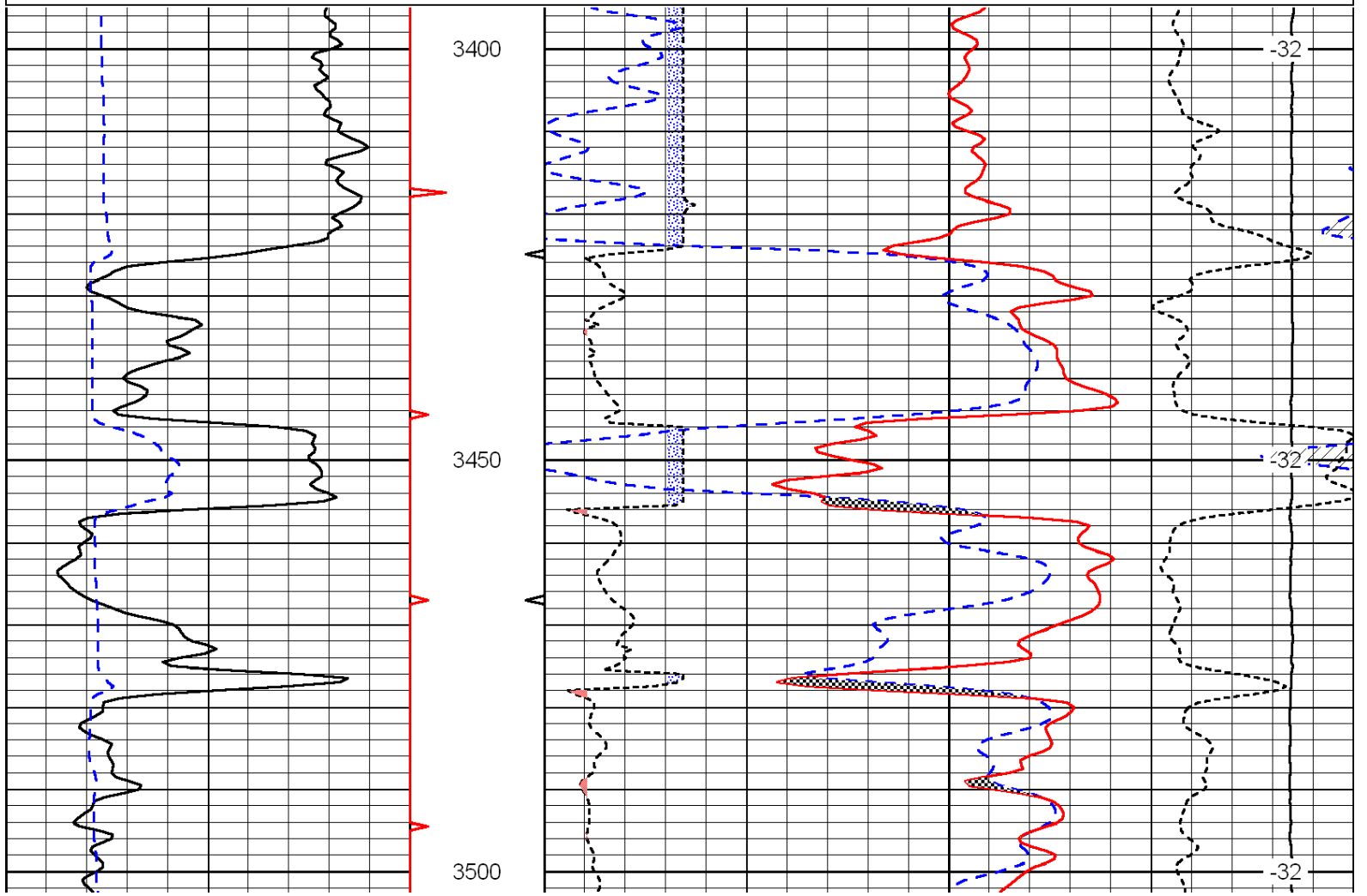
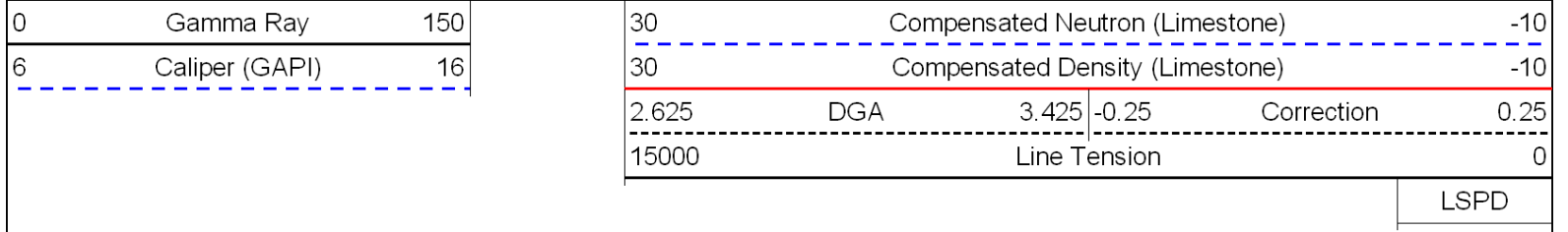
| | | | |
|-------|---------------------|-------|------------|
| 30 | Compensated Density | | -10 |
| 2 | Bulk Density | | 3 |
| 15000 | Line Tension | | 0 |
| 2.625 | DGA | 3.425 | -0.25 |
| | | | Correction |
| | | | 0.25 |
| LSPD | | | |

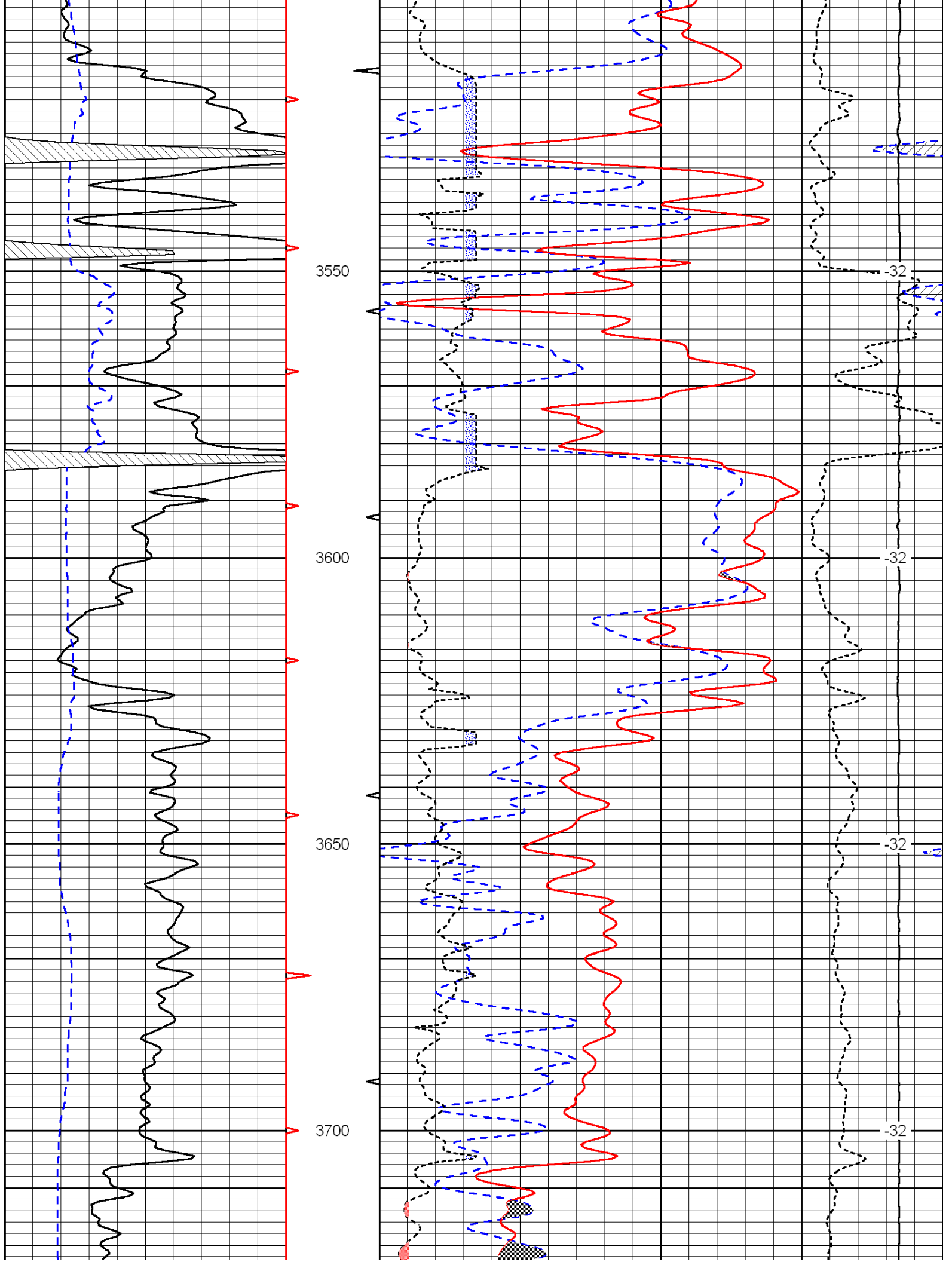


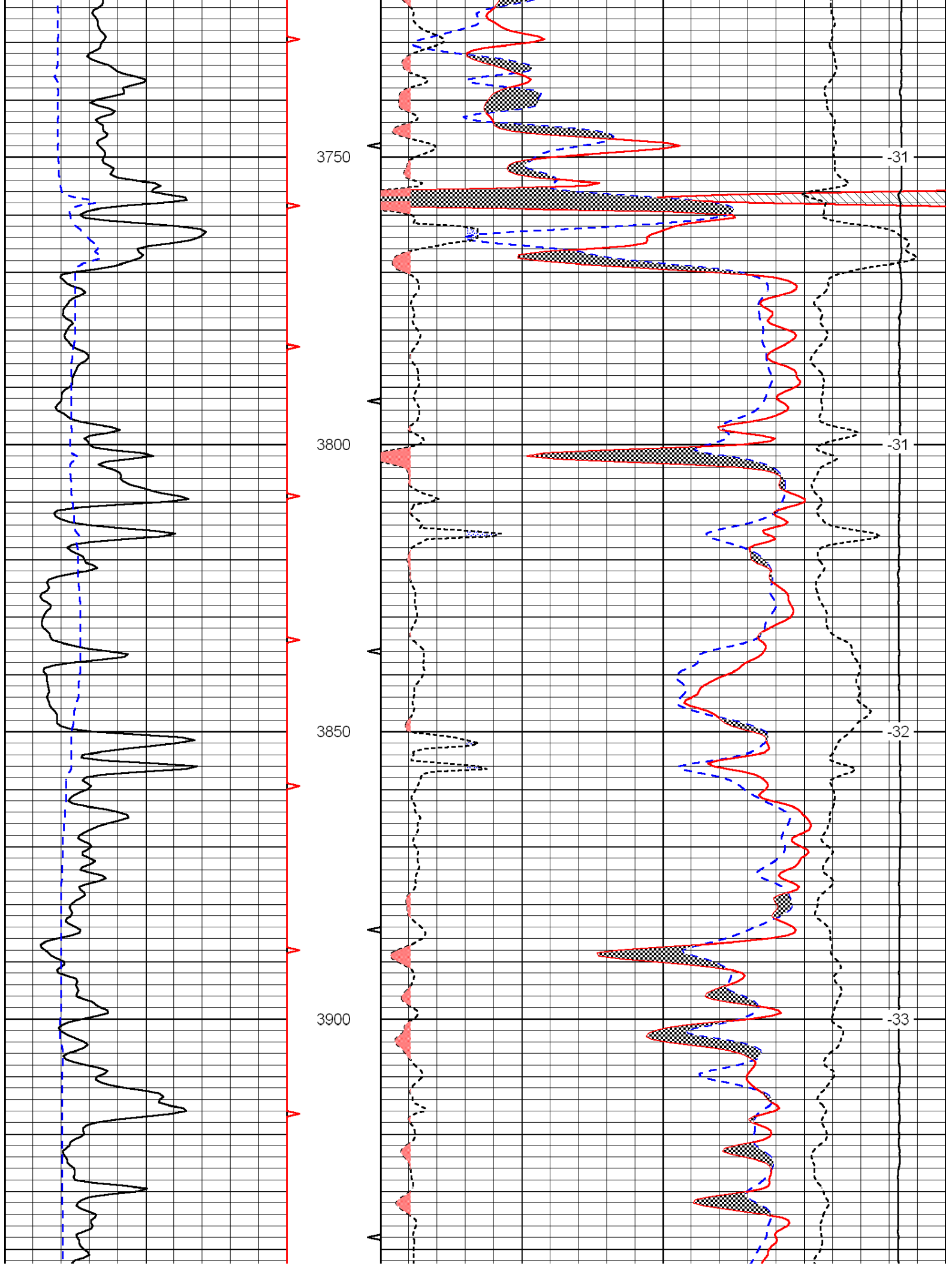


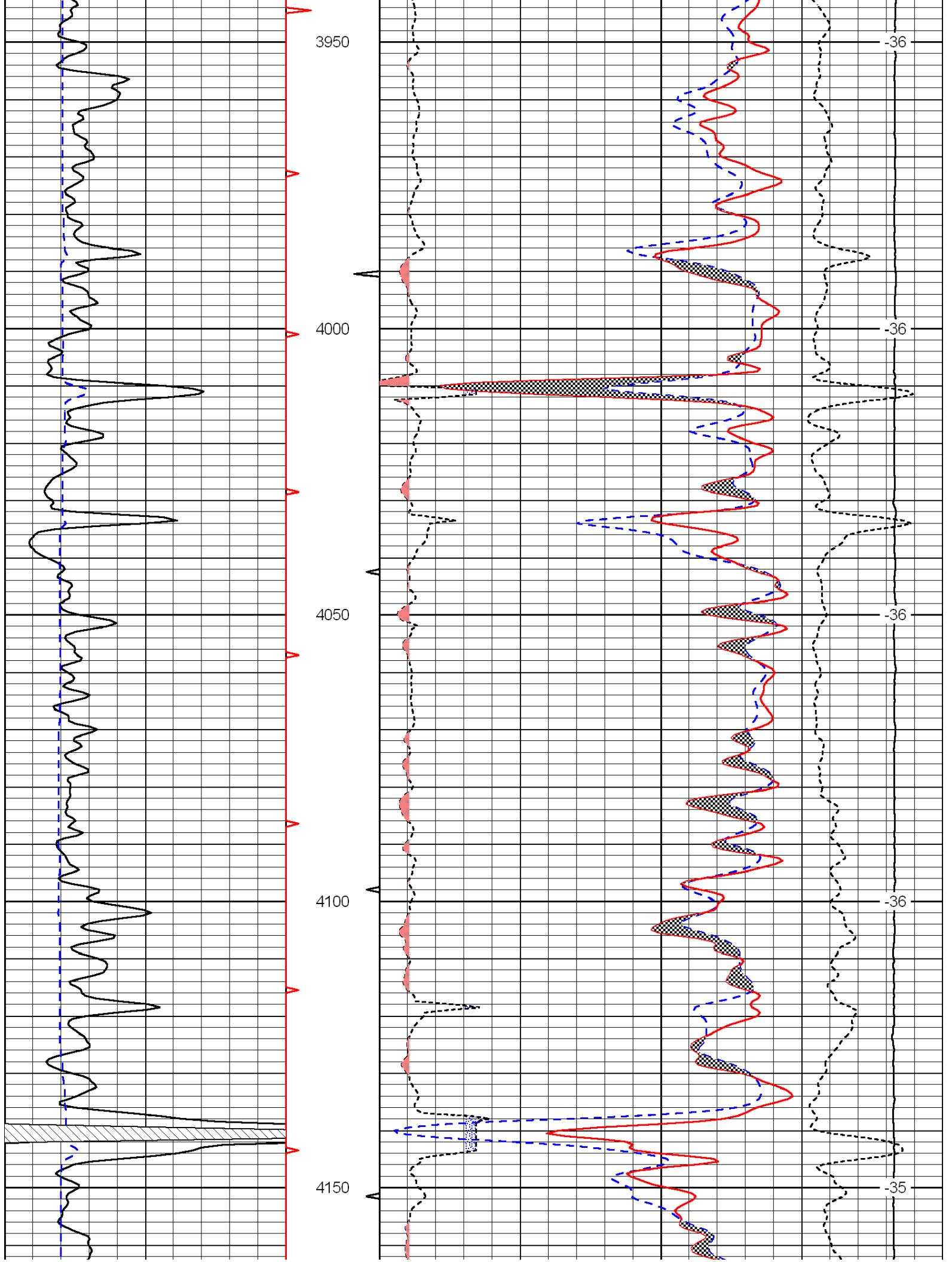


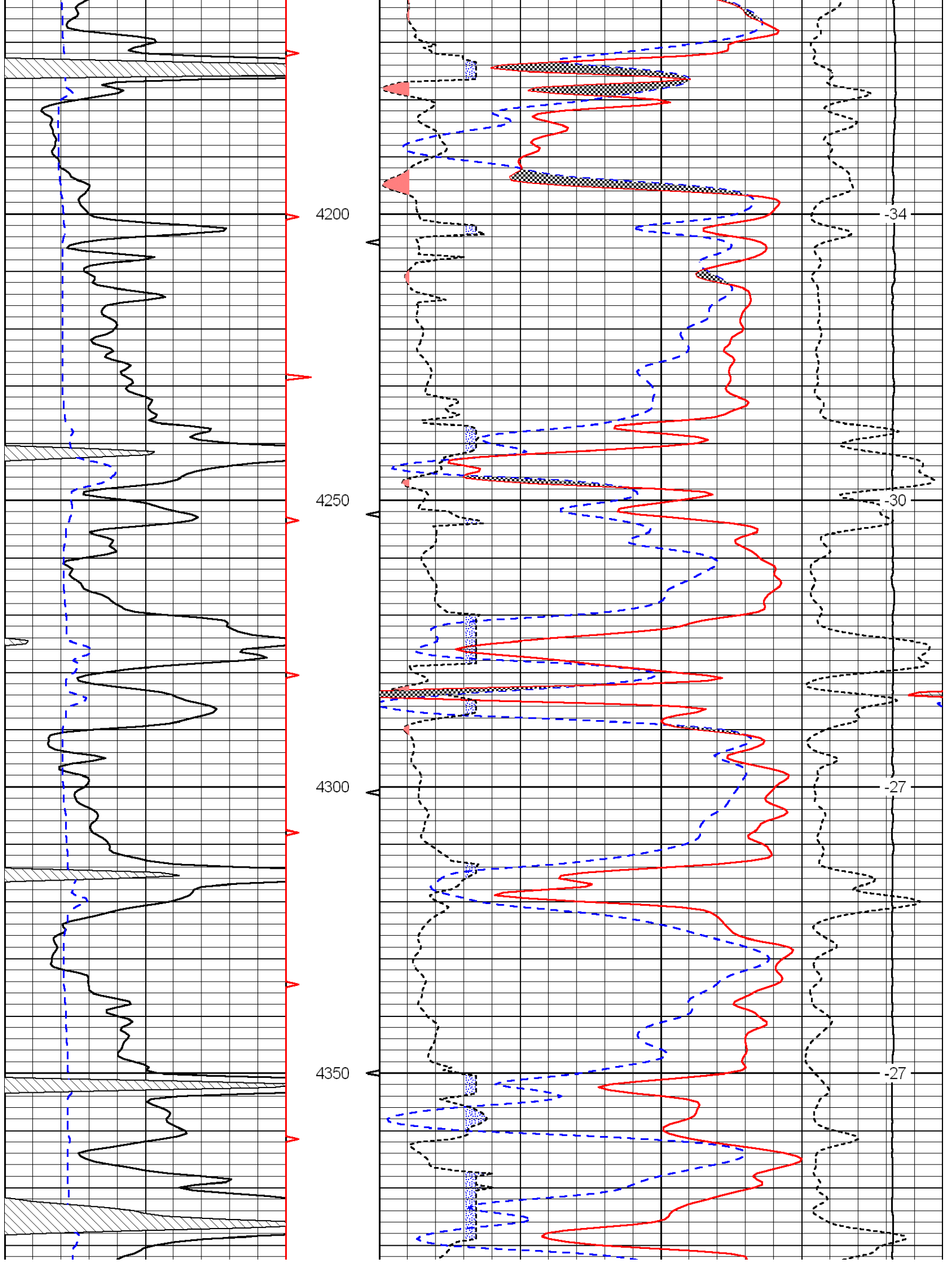
Database File: c:\warrior\data\edmiston_price no. 2\edmistonoil_price_2hd.db
 Dataset Pathname: dil/edstck
 Presentation Format: cndlspec
 Dataset Creation: Thu Dec 15 23:57:50 2011
 Charted by: Depth in Feet scaled 1:240

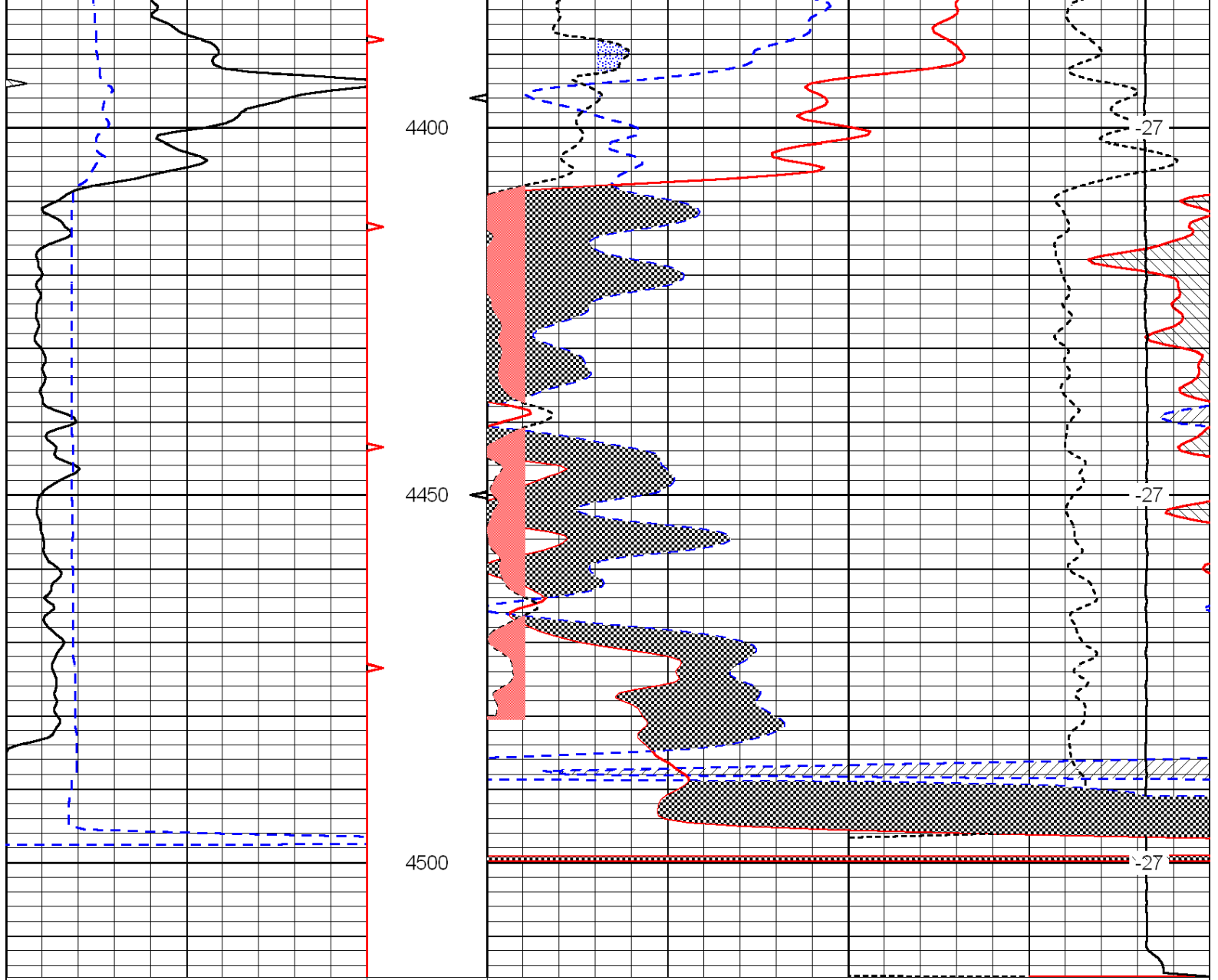












| | | |
|---|----------------|-----|
| 0 | Gamma Ray | 150 |
| 6 | Caliper (GAPI) | 16 |

| | | | | | |
|-------|---------------------------------|-------|-------|------------|------|
| 30 | Compensated Neutron (Limestone) | | | -10 | |
| 30 | Compensated Density (Limestone) | | | -10 | |
| 2.625 | DGA | 3.425 | -0.25 | Correction | 0.25 |
| 15000 | Line Tension | | | 0 | |

LSPD