



Dual Induction Log

DIGITAL LOG (785) 625-3858

15-007-23,764-00-00

API No.	Company N-10 Exploration, LLC.		
	Well Medicine River Ranch 'B' No. 9		
	Field Landis		
	County Barber	State	Kansas
	Location 690' FEL & 2310' FNL		
	Sec: 15	Twp: 34 S	Rge: 11 W
	Permanent Datum	Ground Level	Elevation 1357
	Log Measured From Kelly Bushing		10 Ft. Above Perm. Datum
	Drilling Measured From Kelly Bushing		
Date	12/3/2011		
Run Number	One		
Depth Driller	5073		
Depth Logger	5072		
Bottom Logged Interval	5071		
Top Log Interval	250		
Casing Driller	8.625 @ 269		
Casing Logger	269		
Bit Size	7.875		
Type Fluid in Hole	Chemical		
Salinity, ppm CL	3.500		
Density / Viscosity	9.4	54	
pH / Fluid Loss	10.5	9.2	
Source of Sample	Flowline		
Rm @ Meas. Temp	.90	@	58
Rmf @ Meas. Temp	.68	@	58
Rmc @ Meas. Temp	1.23	@	58
Source of Rmf / Rmc	Charts		
Rm @ BHT	.30	@	129
Operating Rig Time	3 Hours		
Max Rec. Temp. F	129		
Equipment Number	91		
Location	Hays		
Recorded By	K. Bange		
Witnessed By	Tim Pierce		

Other Services
CNL/CDL
Elevation
K.B. 1367
D.F. 1357
G.L. 1357

<<< Fold Here >>>

All interpretations are opinions based on inferences from electrical or other measurements and we cannot and do not guarantee the accuracy or correctness of any interpretation, and we shall not, except in the case of gross or willful negligence on our part, be liable or responsible for any loss, costs, damages, or expenses incurred or sustained by anyone resulting from any interpretation made by any of our officers, agents or employees. These interpretations are also subject to our general terms and conditions set out in our current Price Schedule.

Comments

Thank you for using Log-Tech, Inc.
(785) 625-3858

Medicine Lodge, S to Gerlane rd,
7 E to Bethel rd, 2 S to Scott Canyon rd,
1 W (thru cattle guard) 1/2 S, W into

Database File: c:\warrior\data\n-10 exploration_medicine river ranch 'b' no. 9\nten120311hd.db
 Dataset Pathname: dil/n10stack
 Presentation Format: dil2in
 Dataset Creation: Sat Dec 03 14:45:33 2011
 Charted by: Depth in Feet scaled 1:600

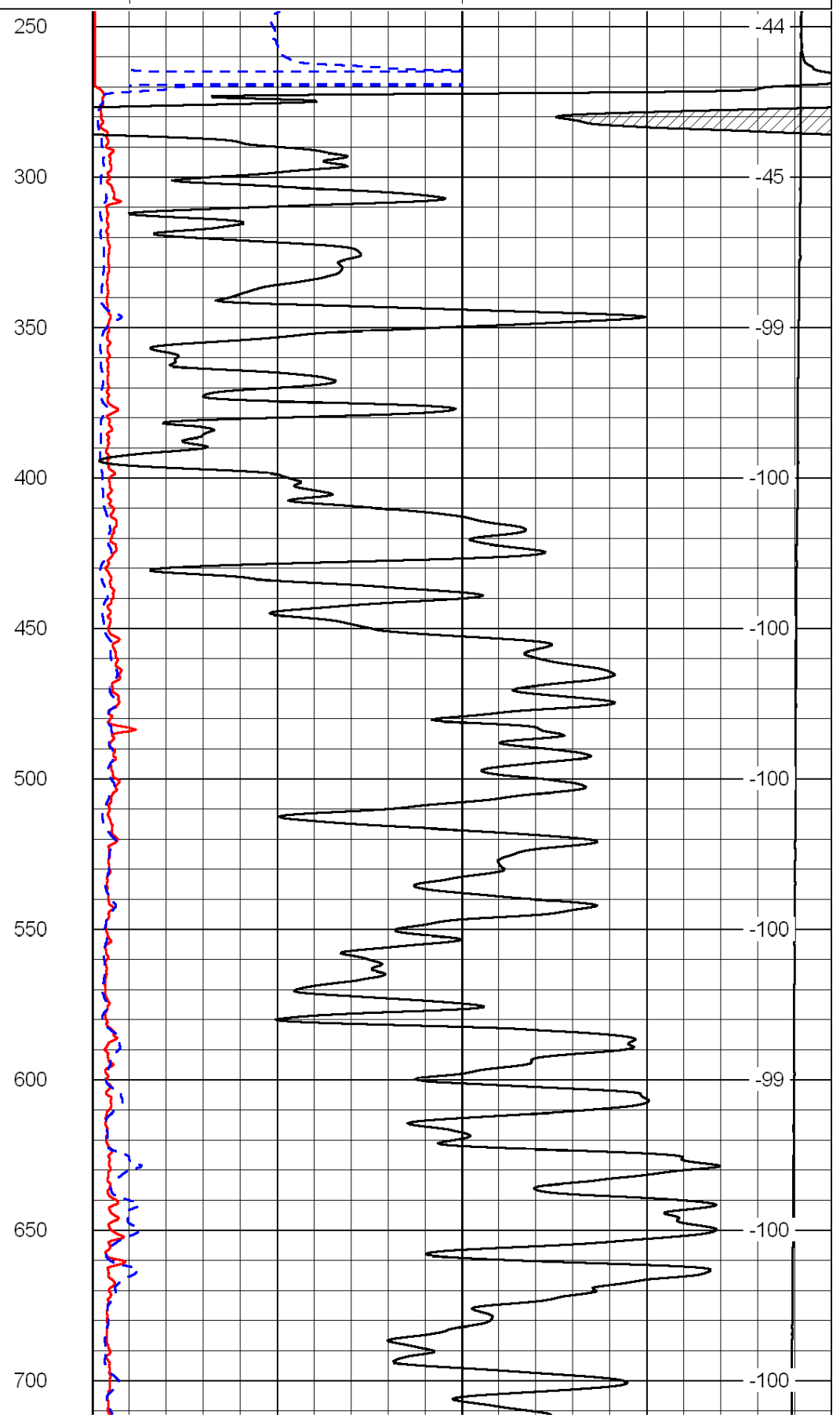
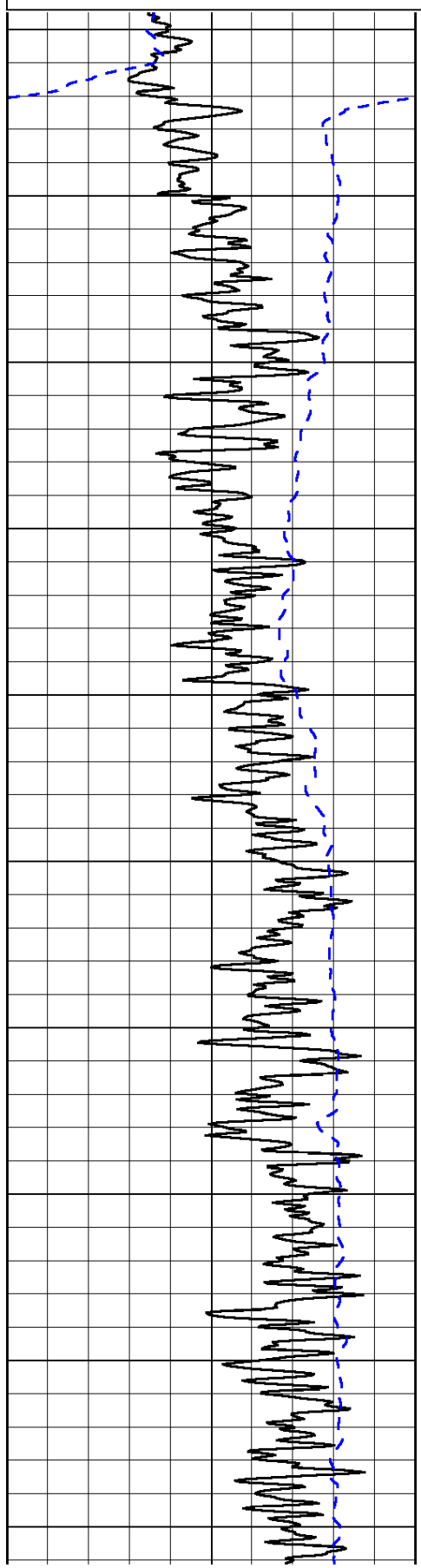
0	Gamma Ray	150
-200	SP (mV)	0

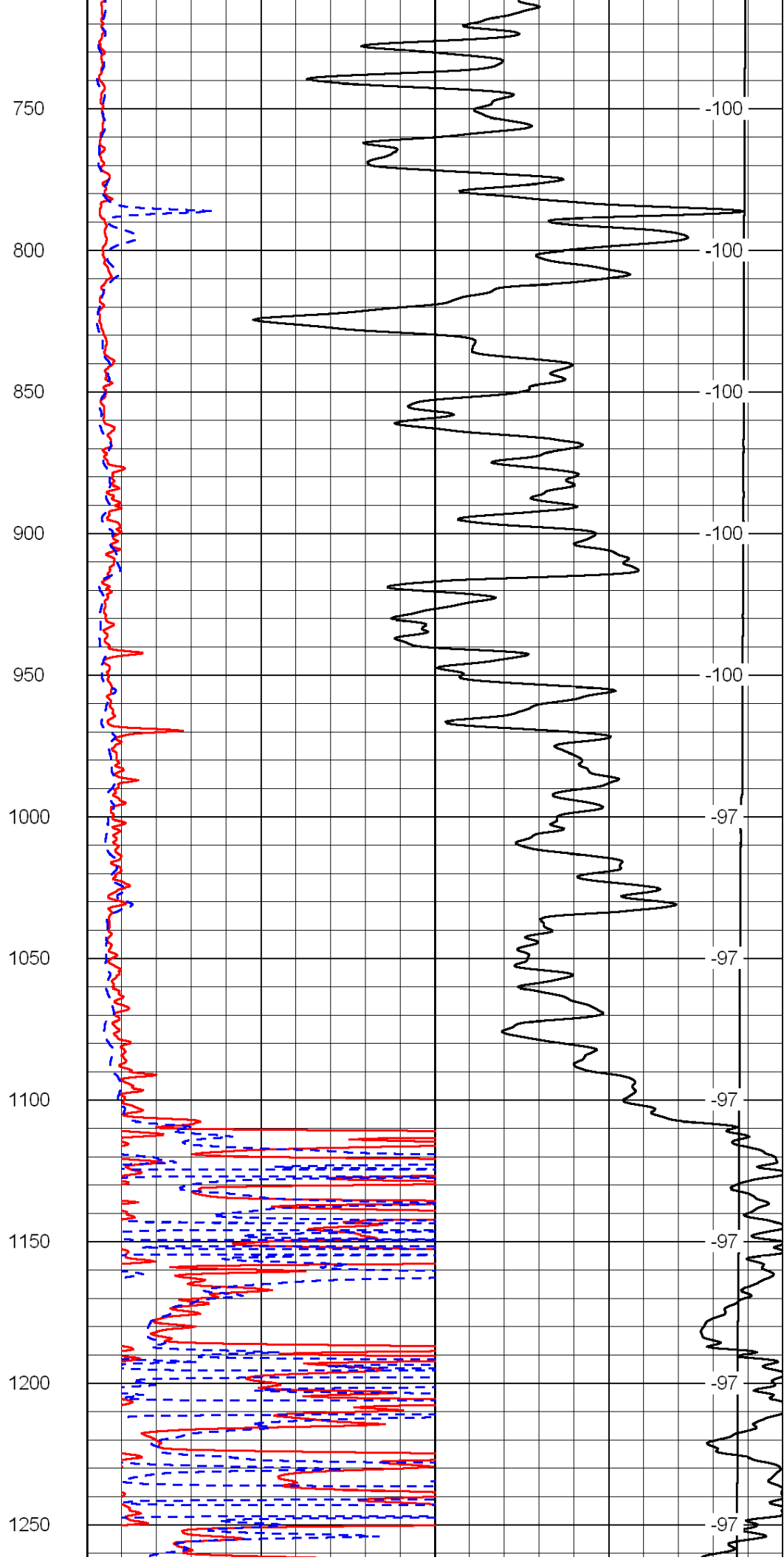
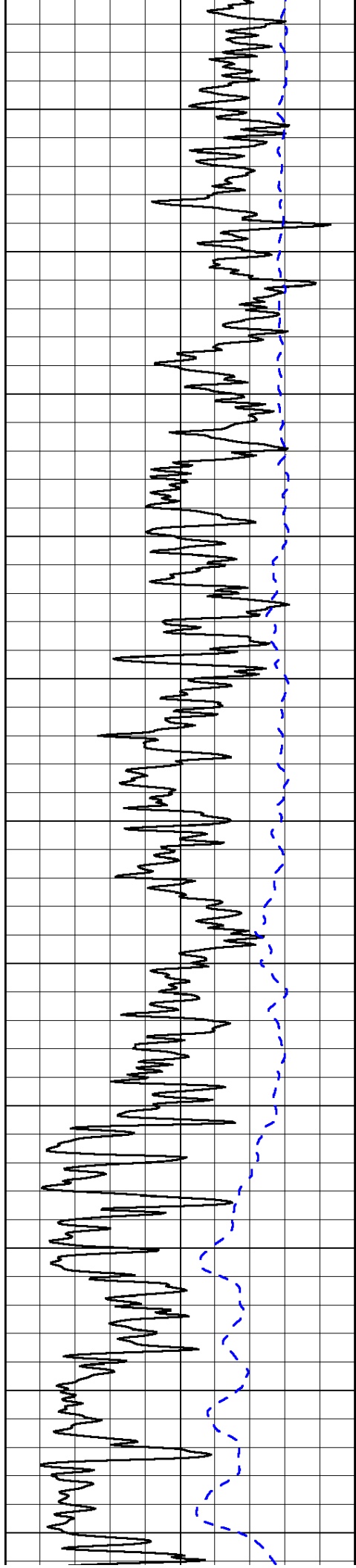
0	Shallow Resistivity	50
0	Deep Resistivity	50

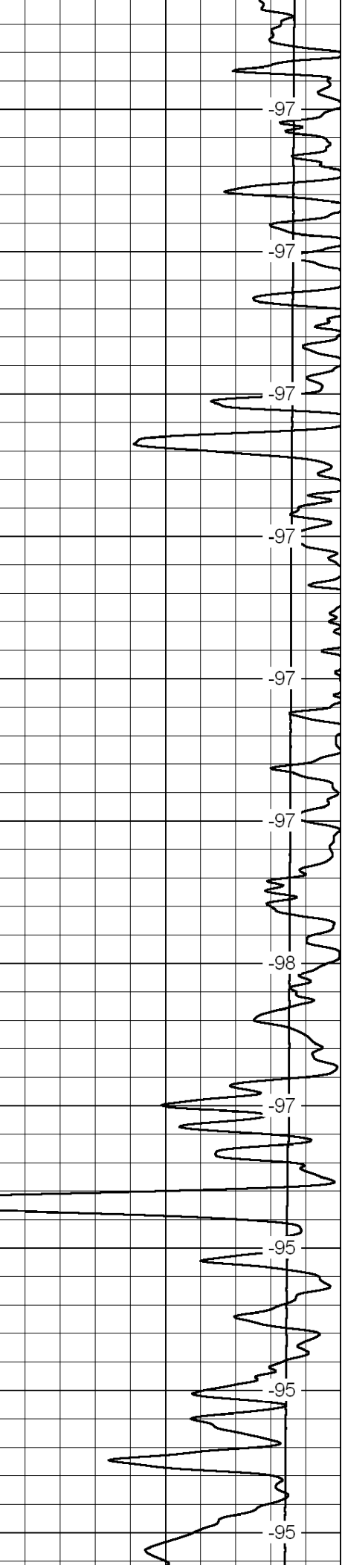
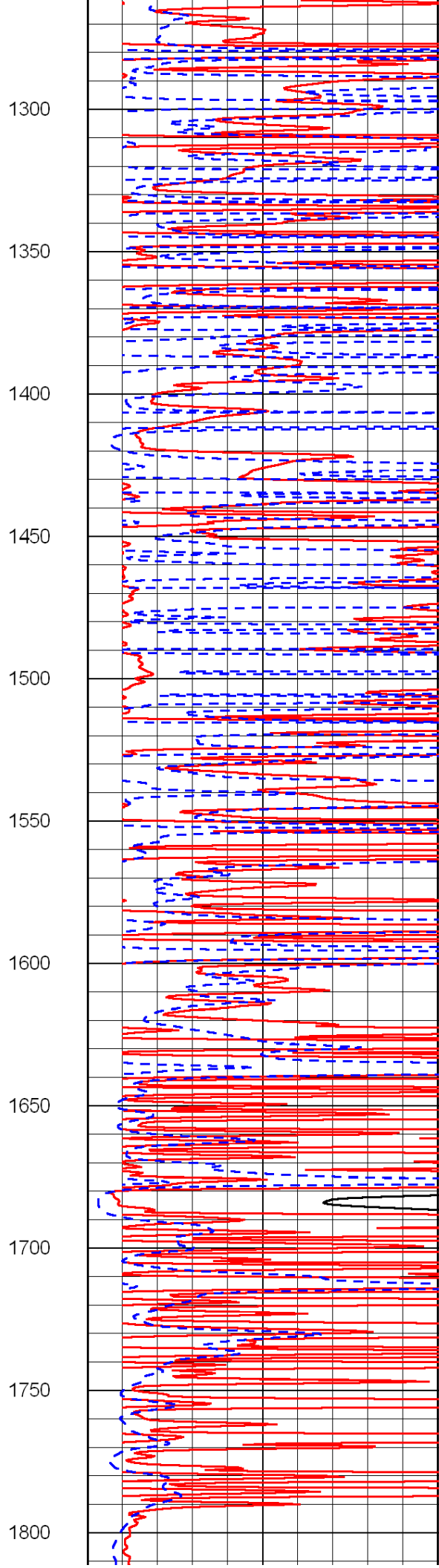
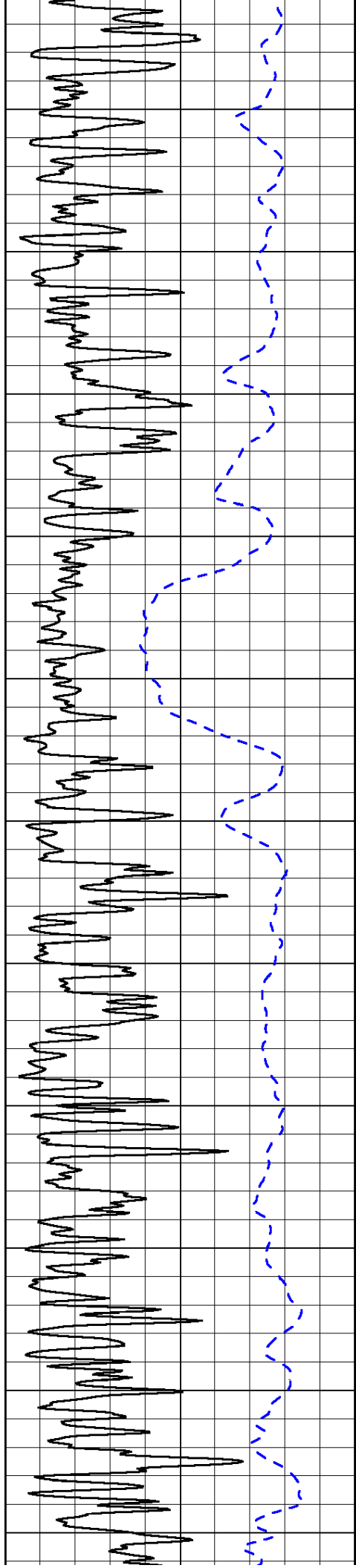
LSPD

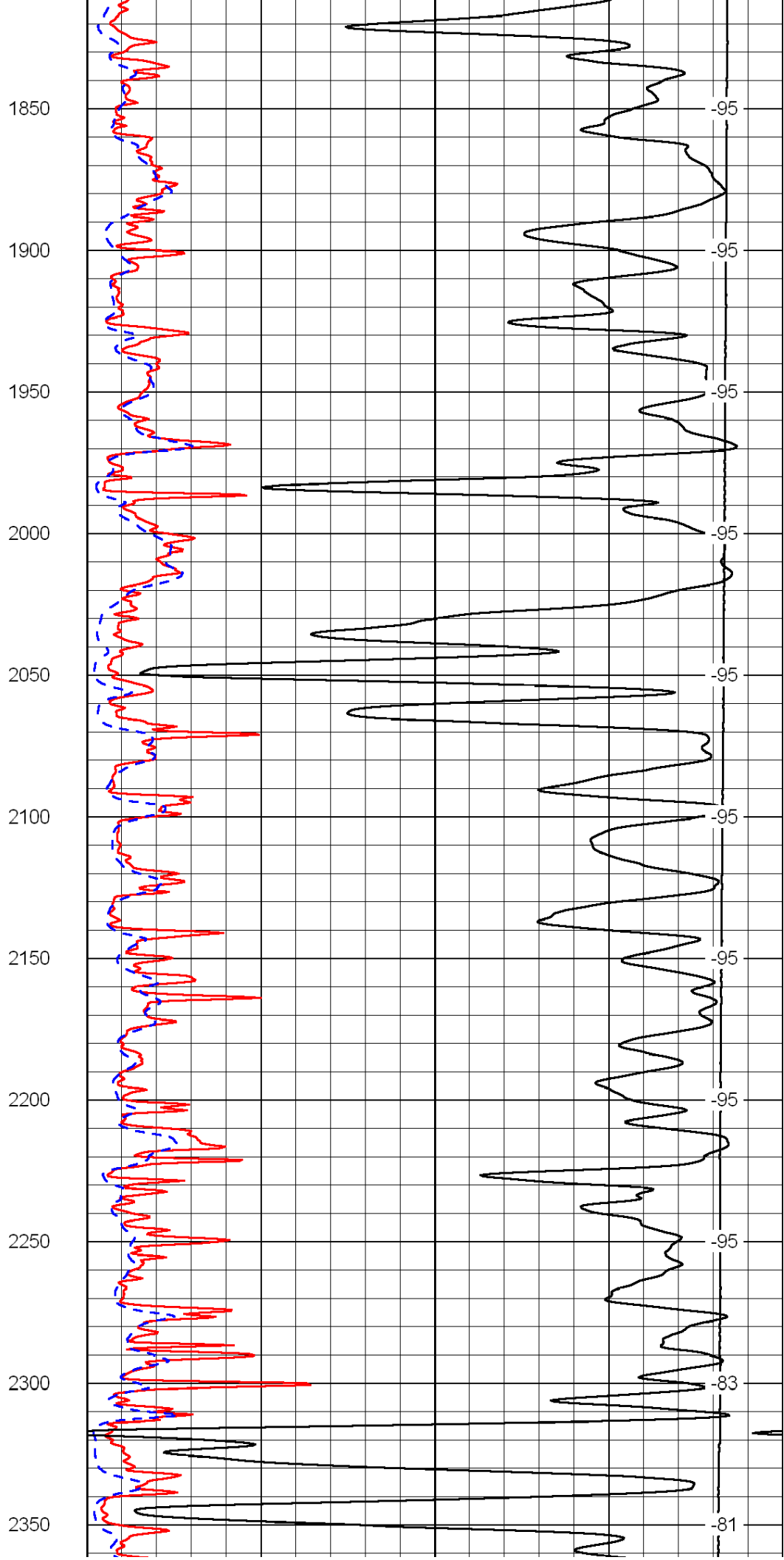
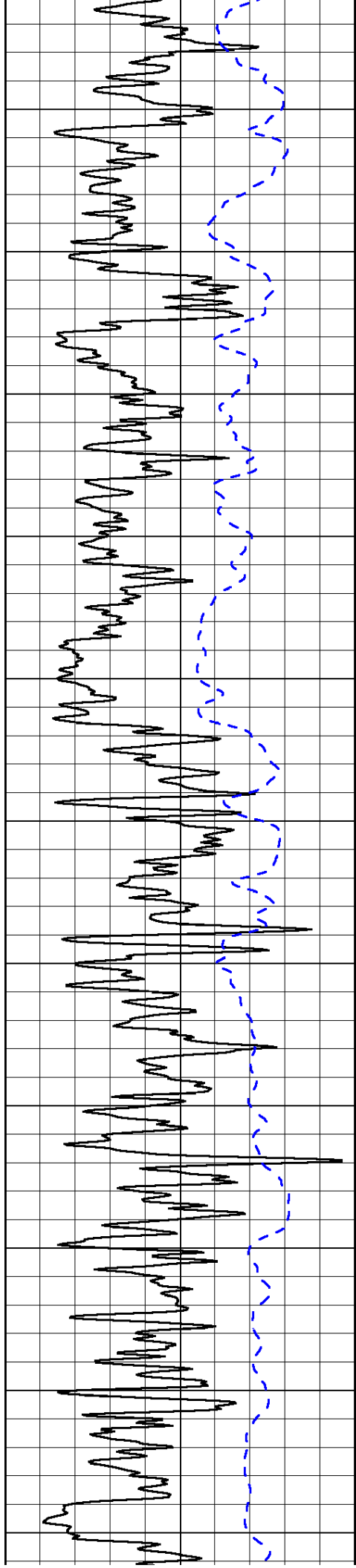
1000	Conductivity	0
15000	Line Tension	0

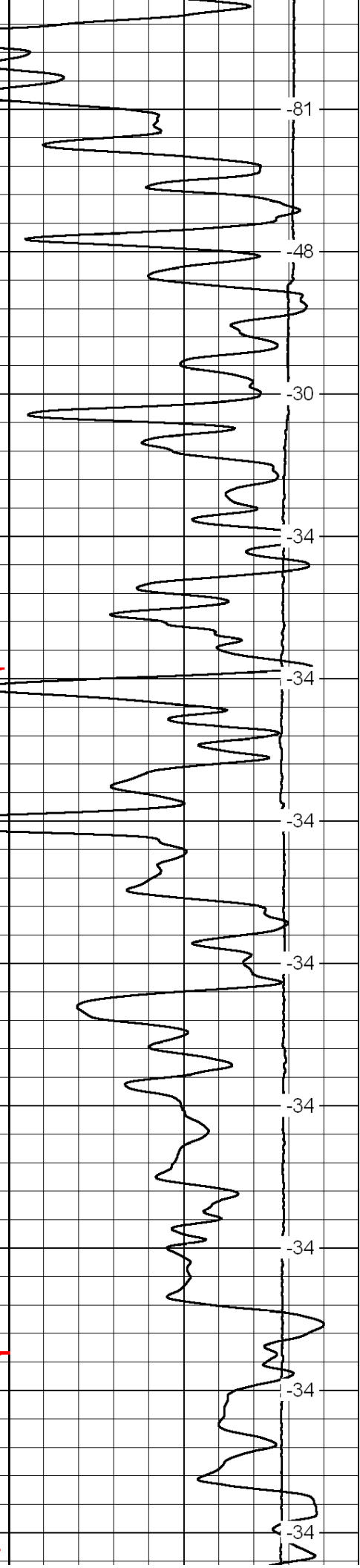
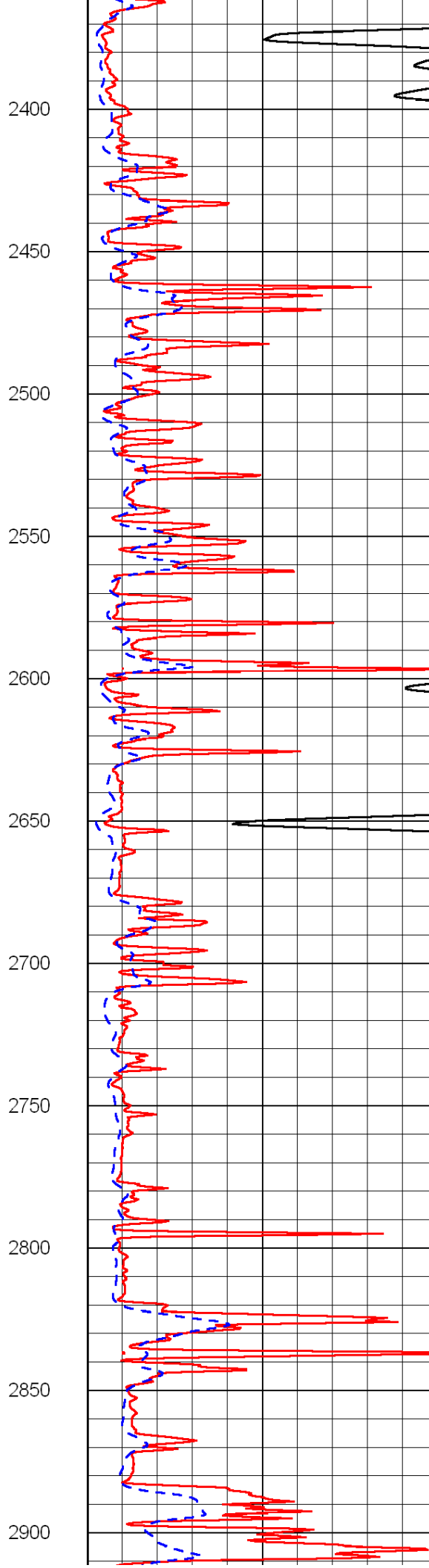
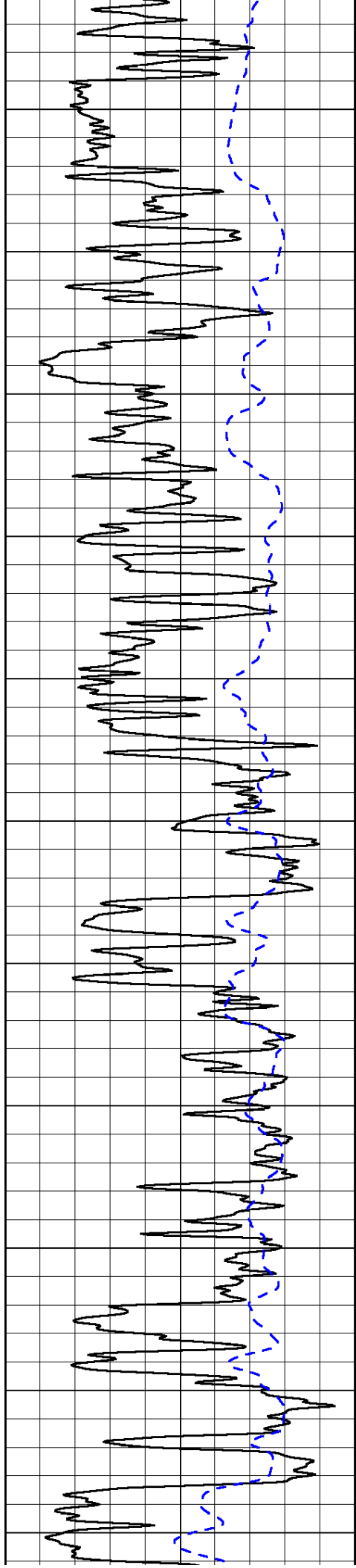
50	Shallow Resistivity	500
50	Deep Resistivity	500

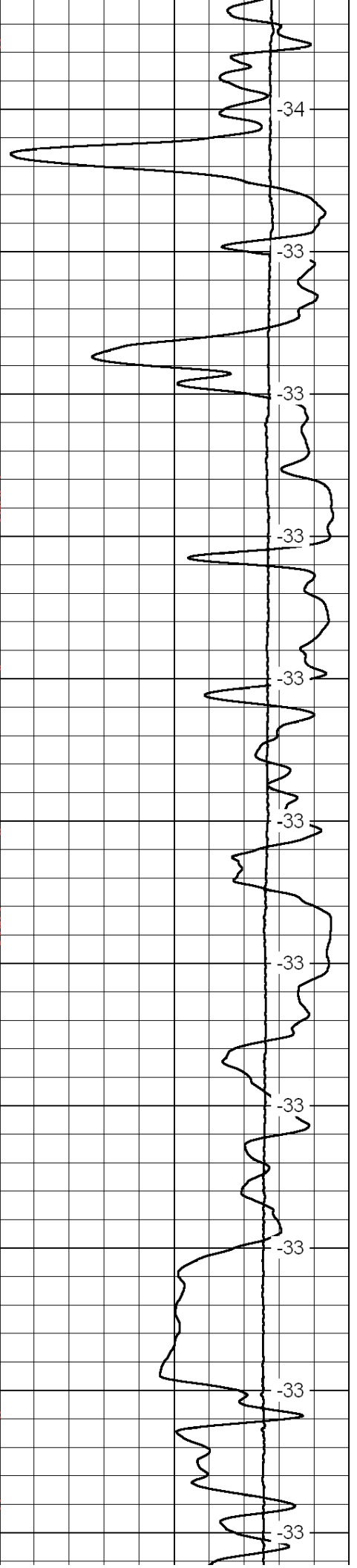
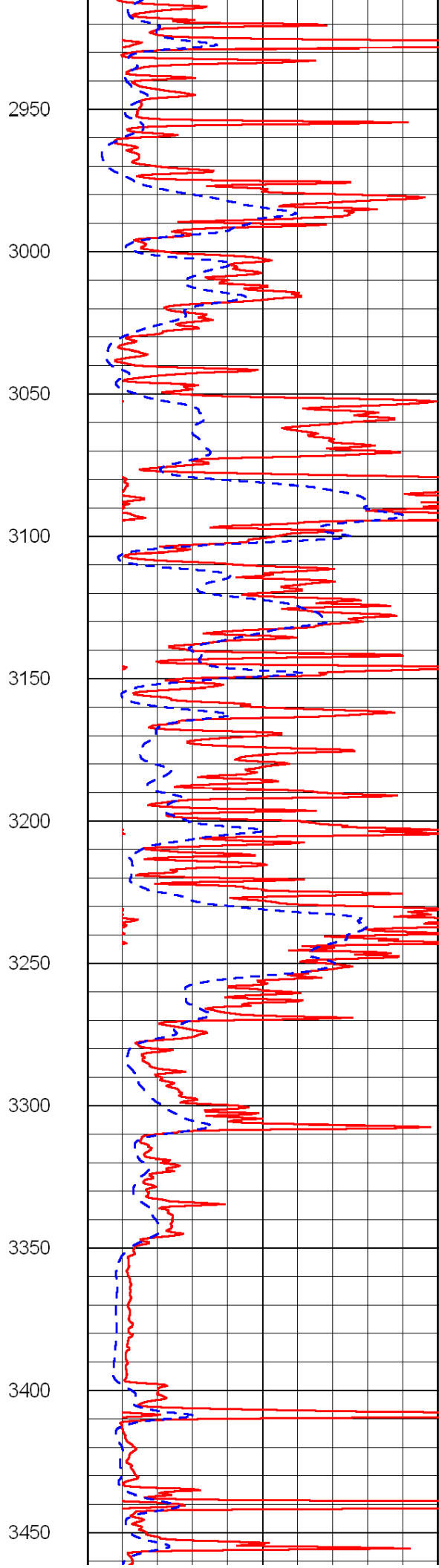
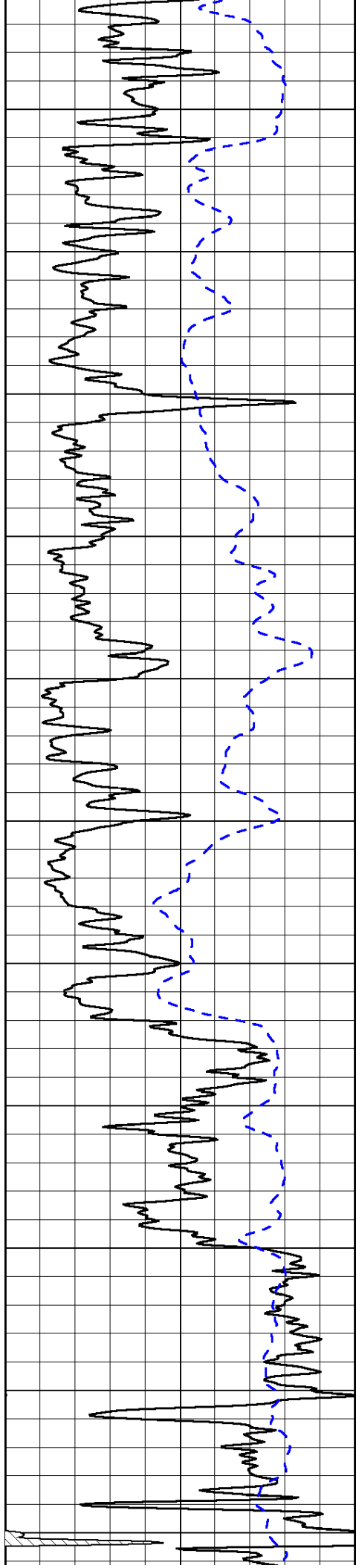


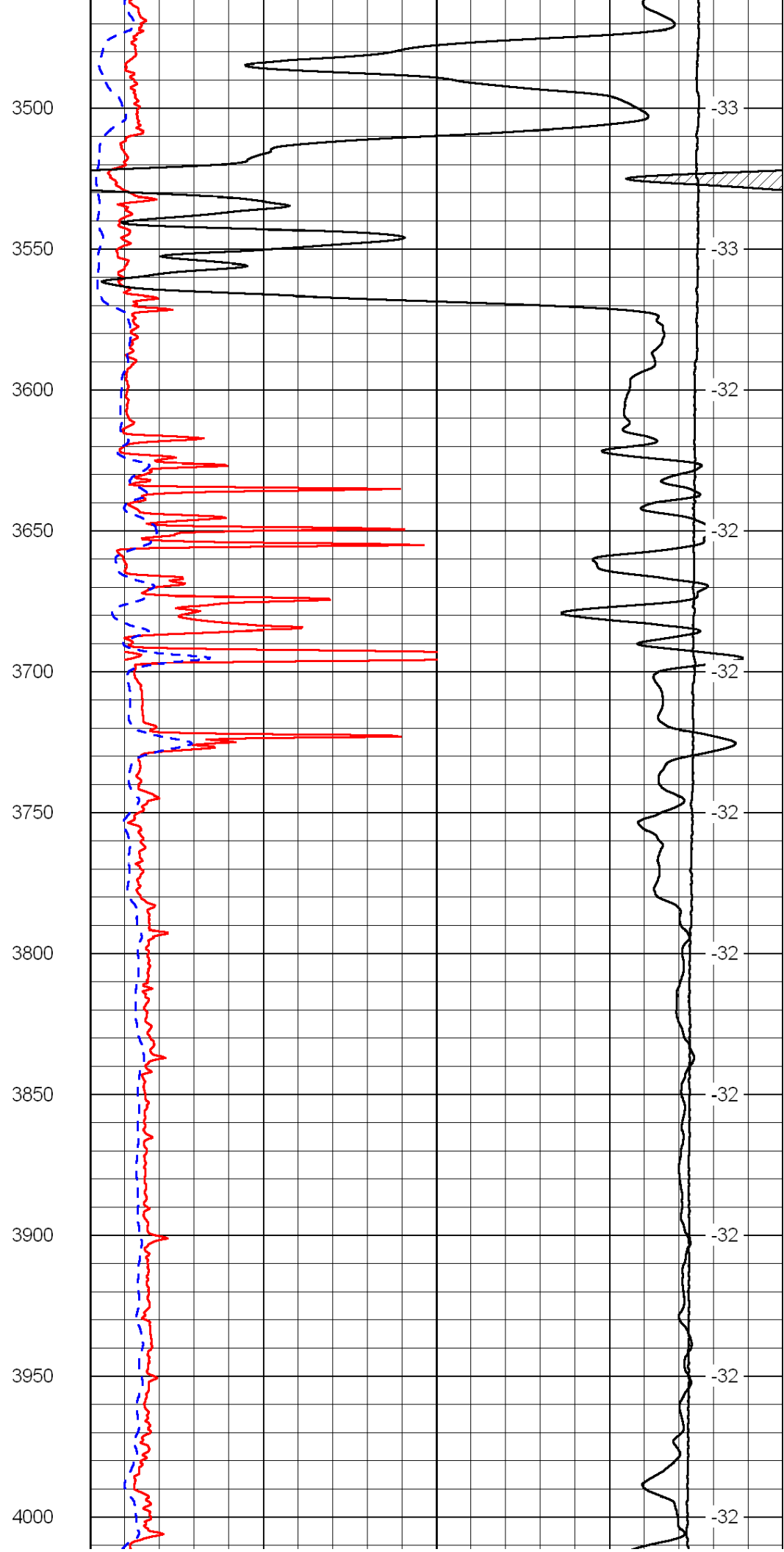
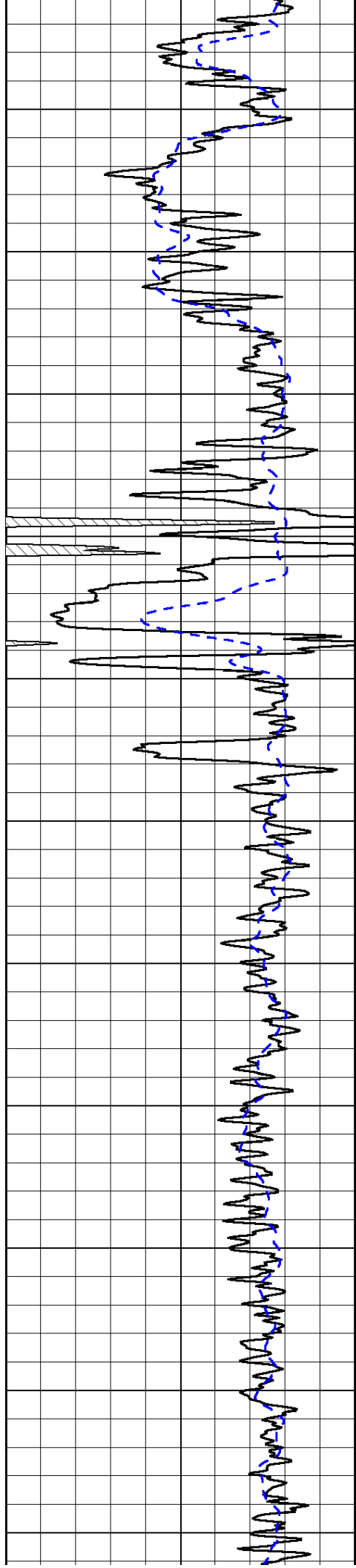


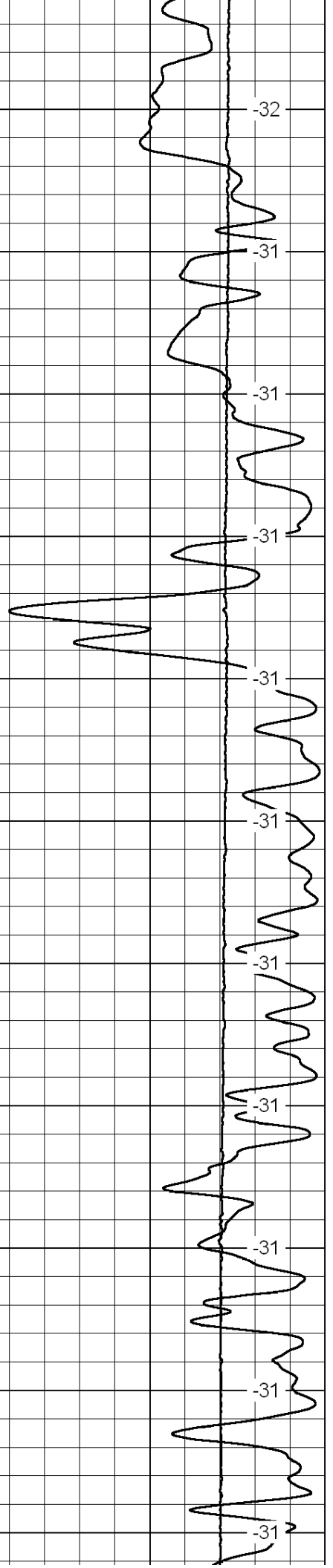
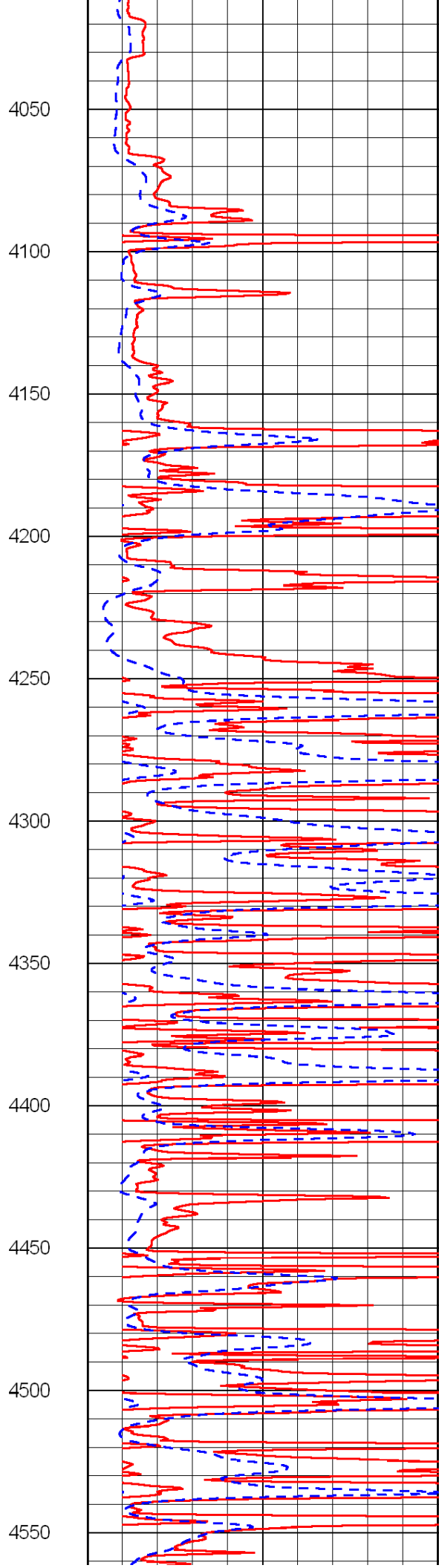
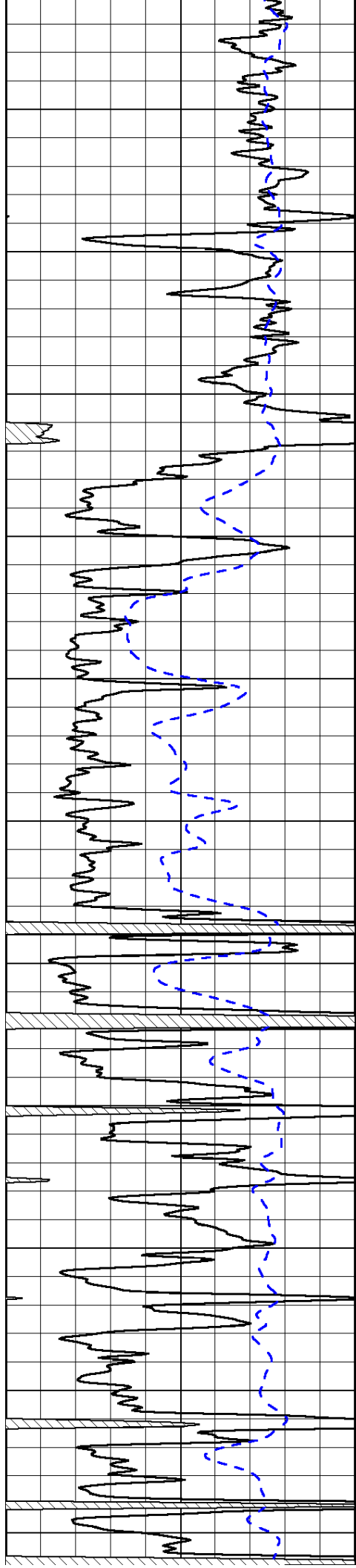


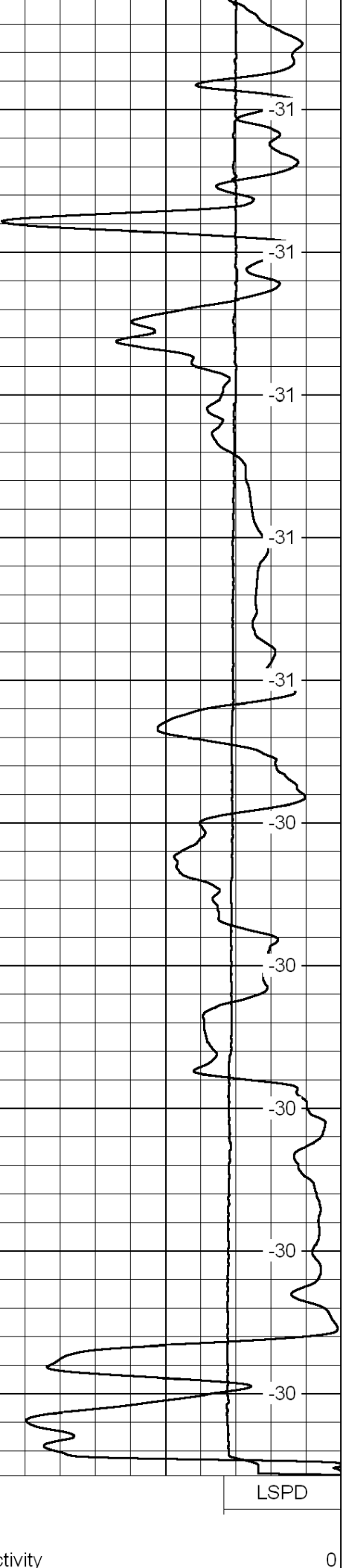
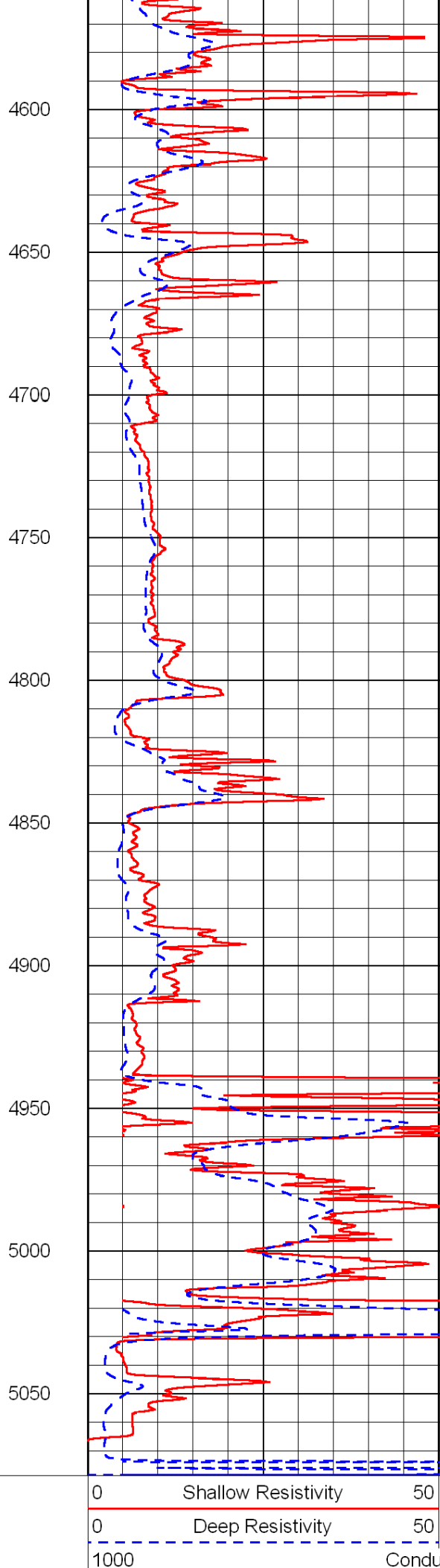
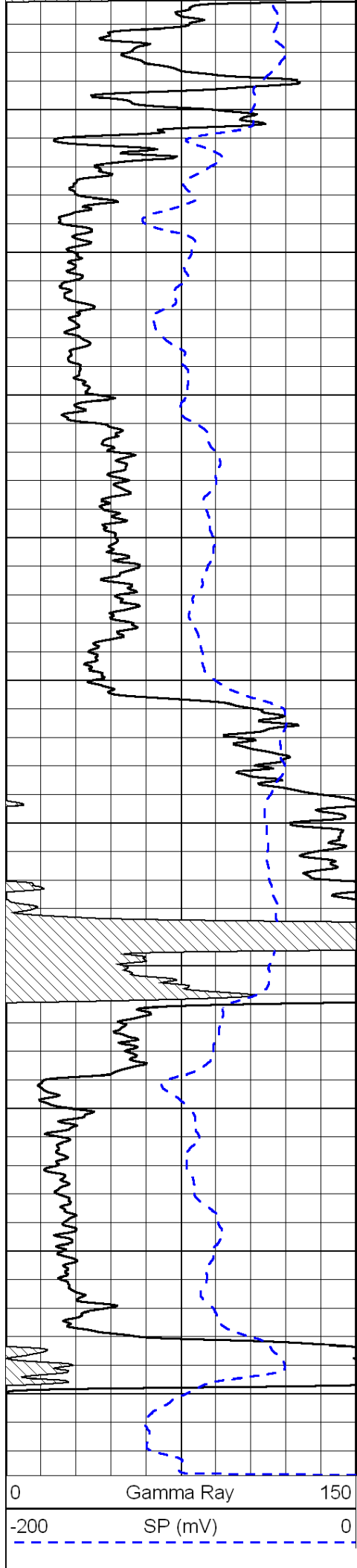












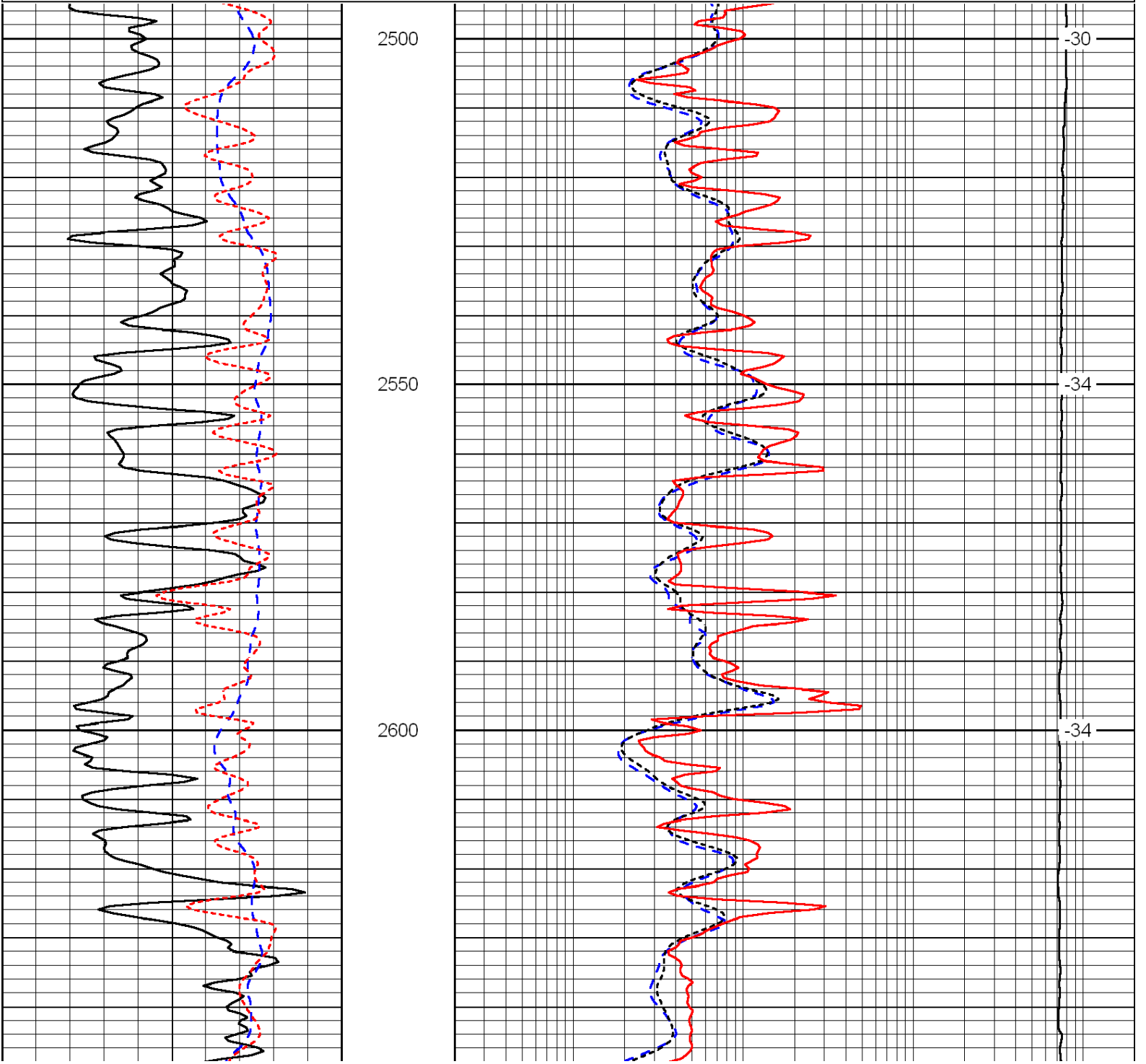
15000	Line Tension		0
50	Shallow Resistivity	500	
50	Deep Resistivity	500	

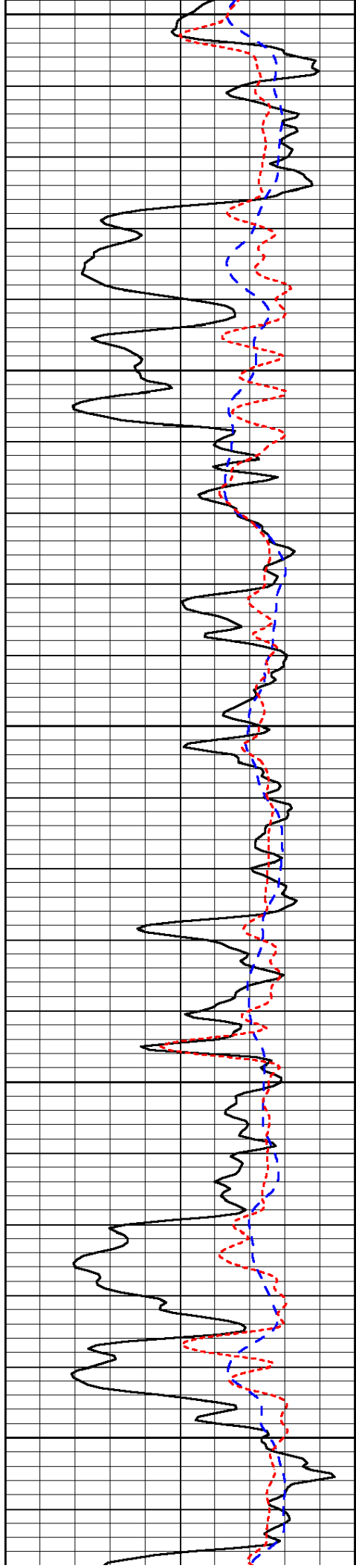
Database File: c:\warrior\data\n-10 exploration_medicine river ranch 'b' no. 9\nten120311hd.db
 Dataset Pathname: dil/n10stack
 Presentation Format: dil
 Dataset Creation: Sat Dec 03 14:45:33 2011
 Charted by: Depth in Feet scaled 1:240

0	Gamma Ray	150
-200	SP (mV)	0
-160	Rxo / Rt	40

0.2	Deep Resistivity	2000
0.2	Medium Resistivity	2000
0.2	Shallow Resistivity	2000
15000	Line Tension	0

LSPD





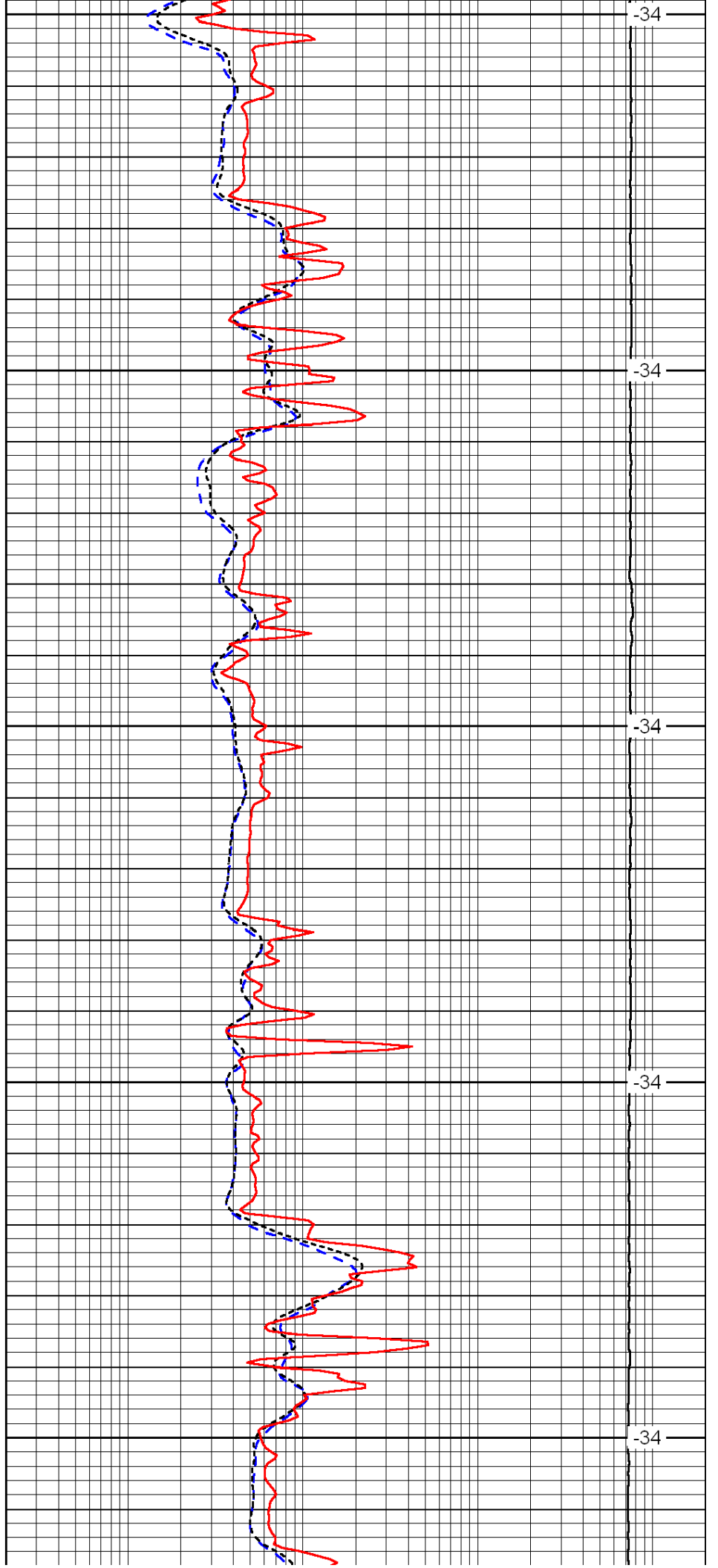
2650

2700

2750

2800

2850



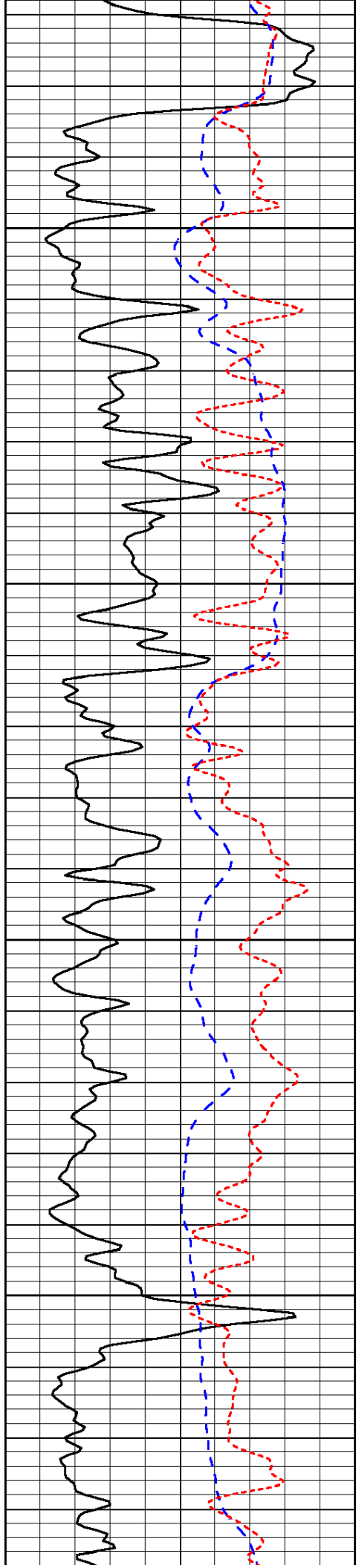
-34

-34

-34

-34

-34

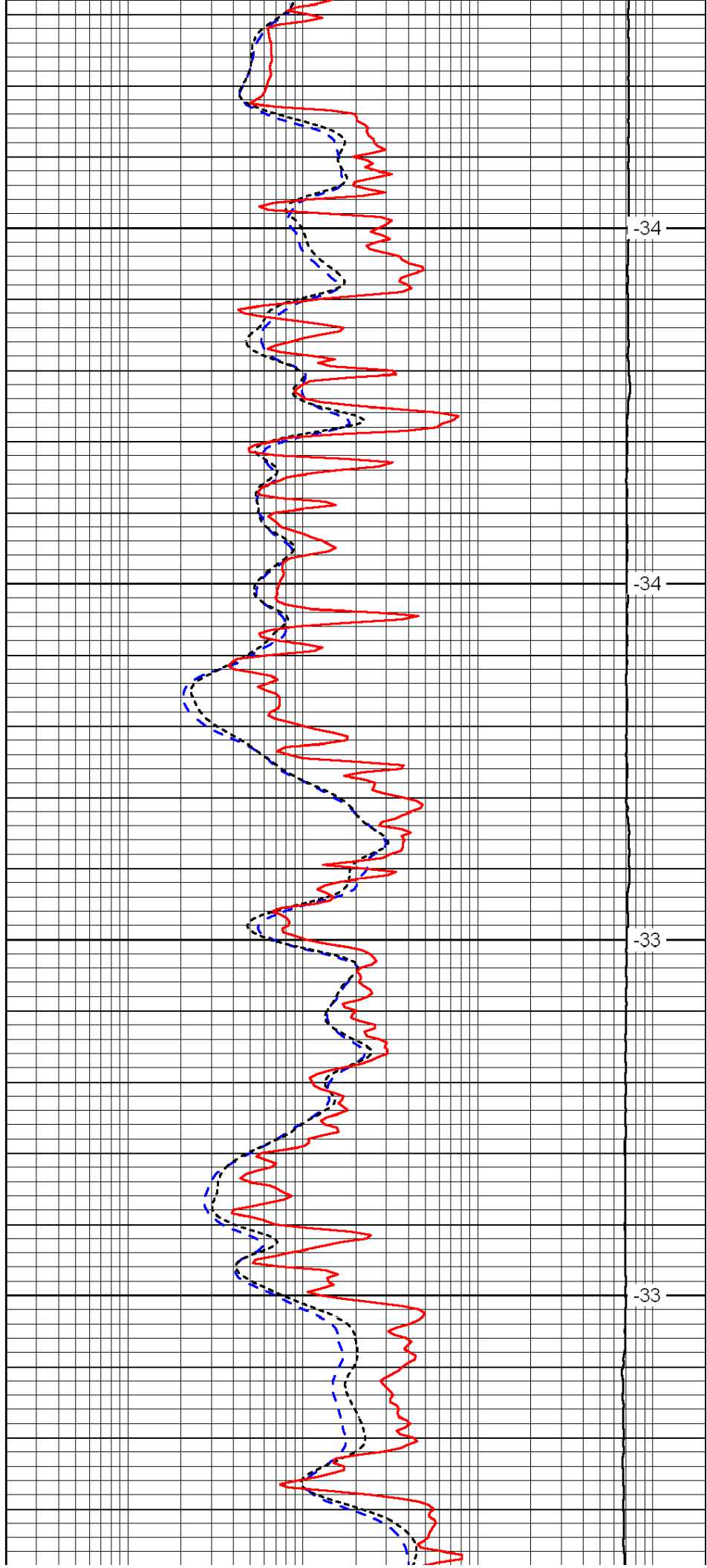


2900

2950

3000

3050

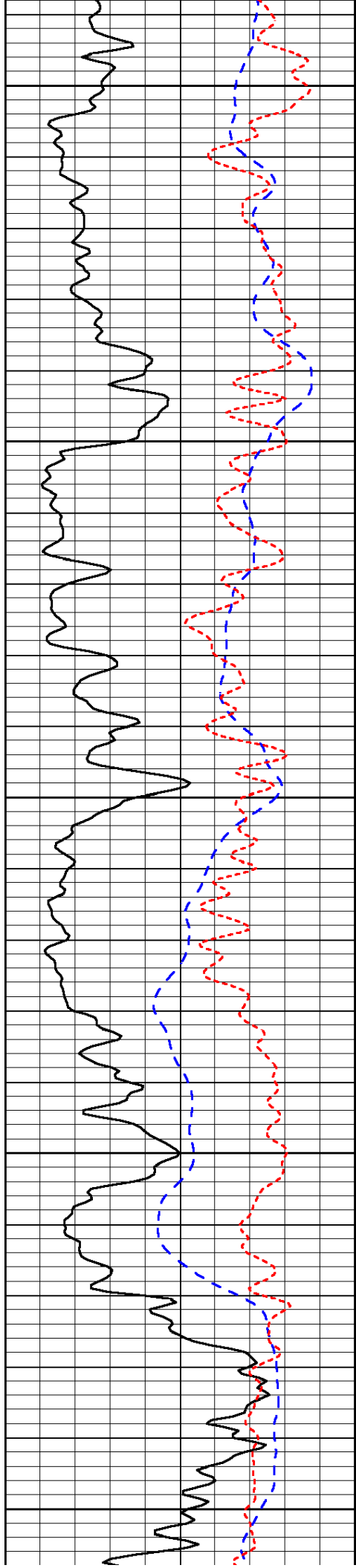


-34

-34

-33

-33



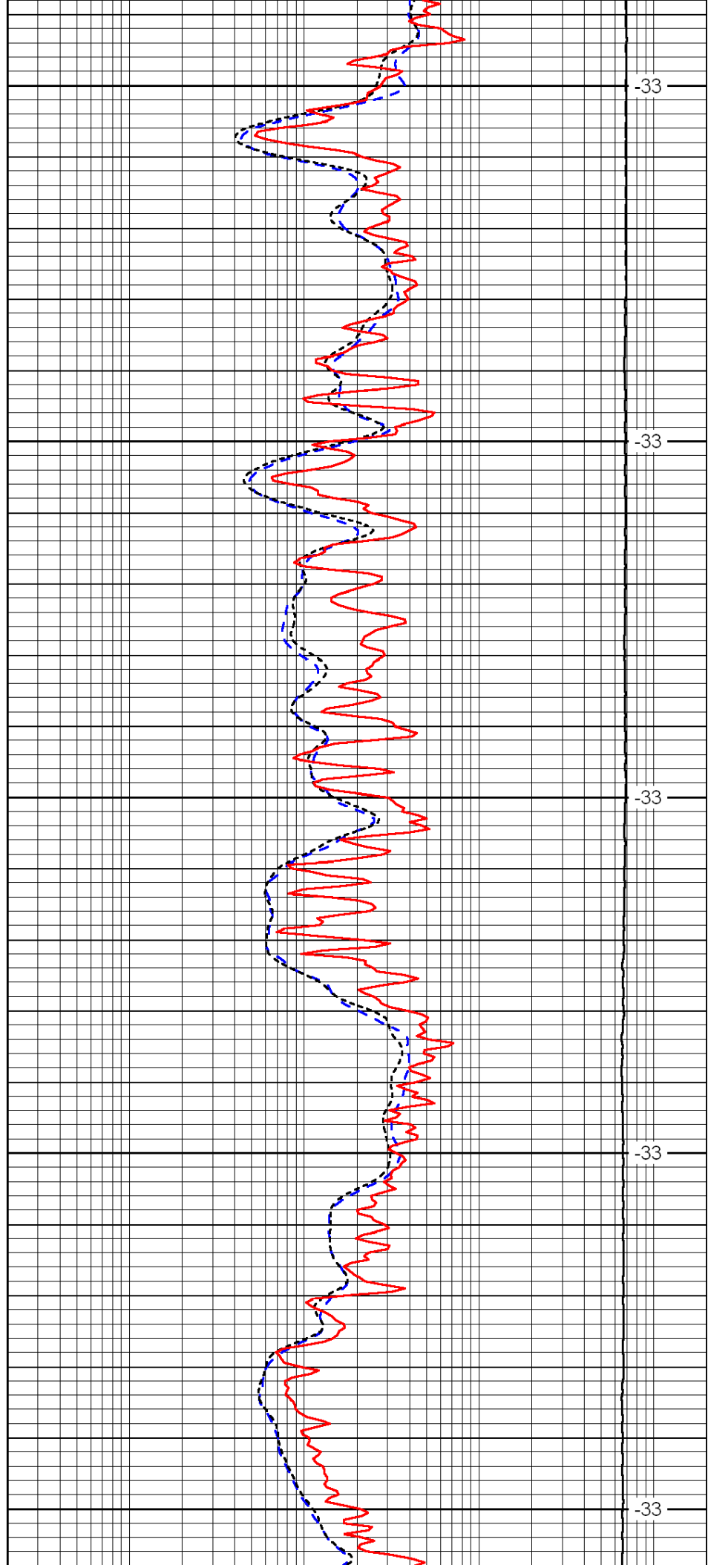
3100

3150

3200

3250

3300



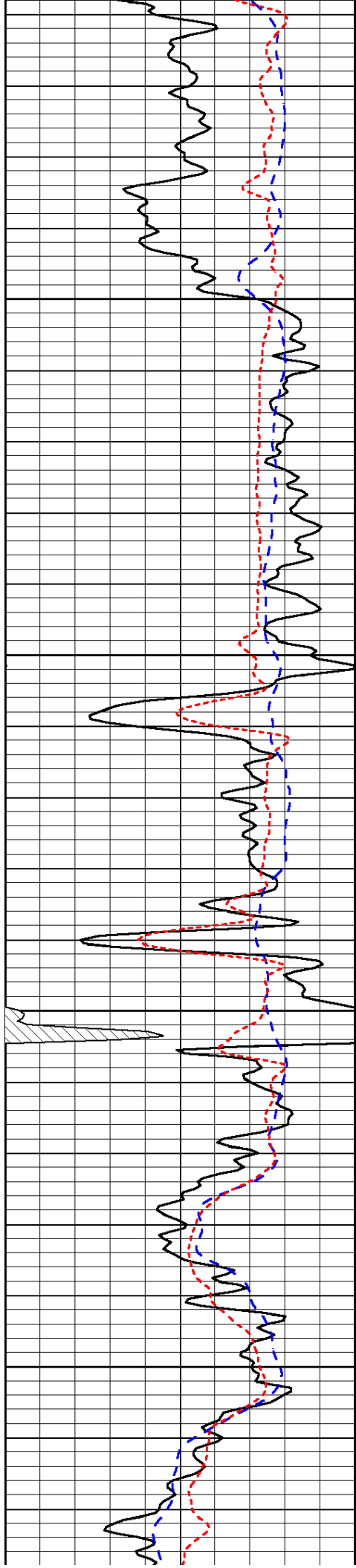
-33

-33

-33

-33

-33

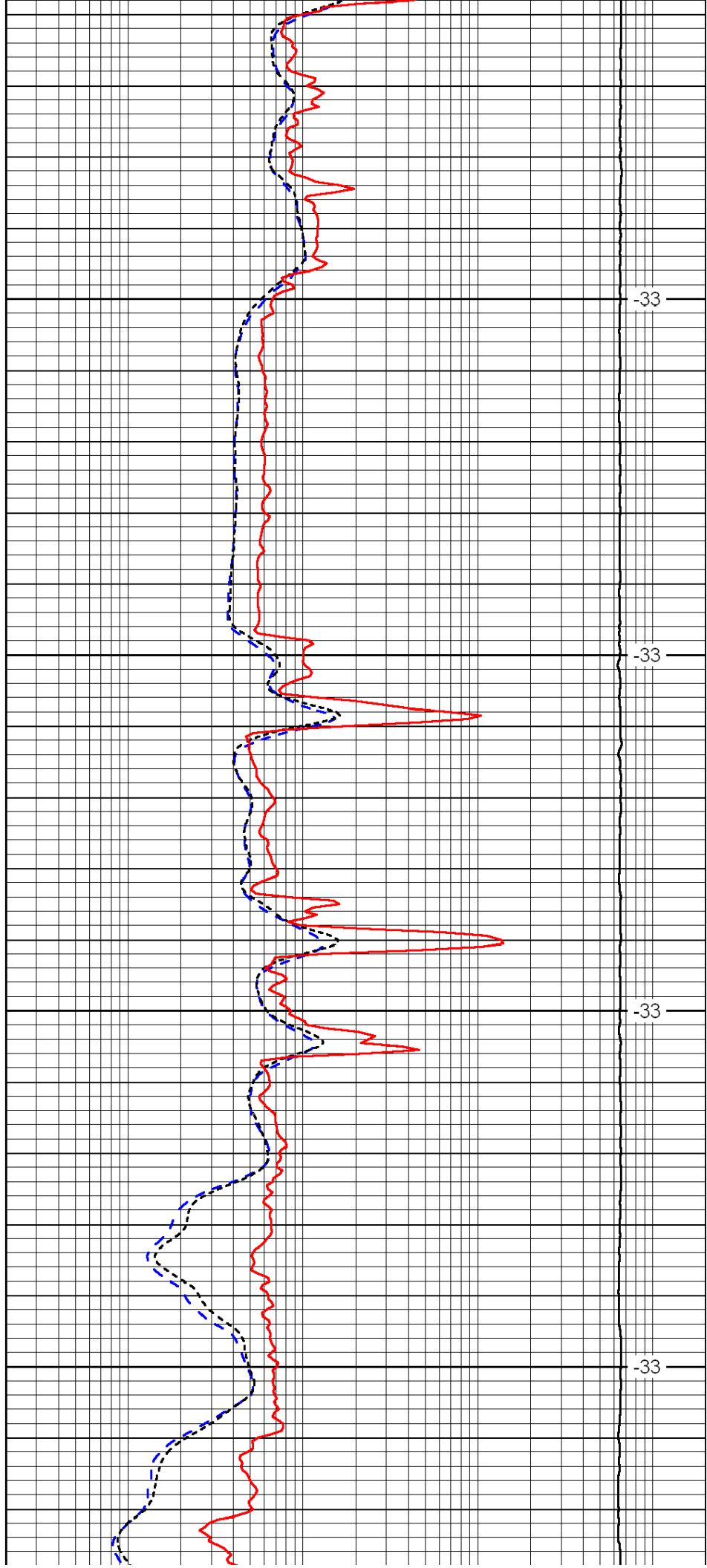


3350

3400

3450

3500

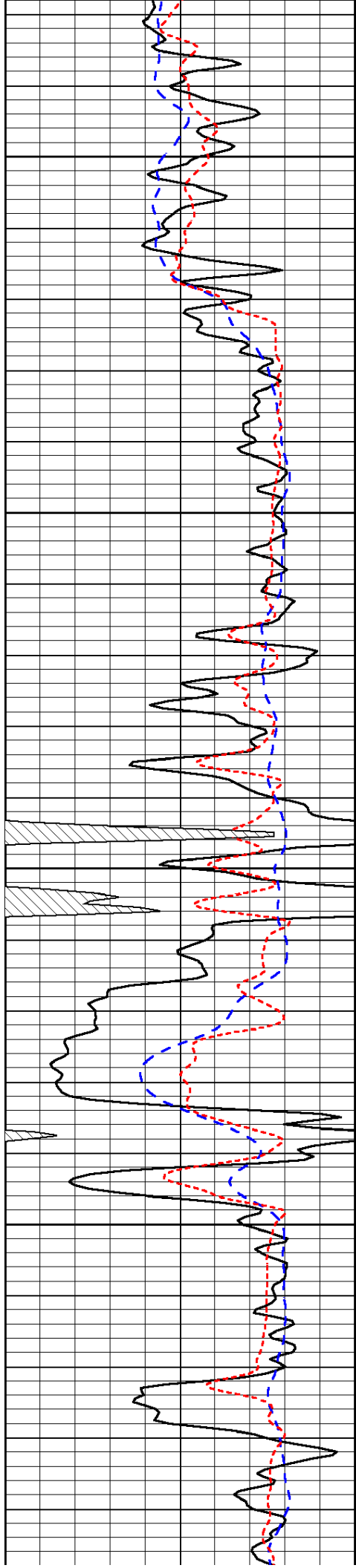


-33

-33

-33

-33

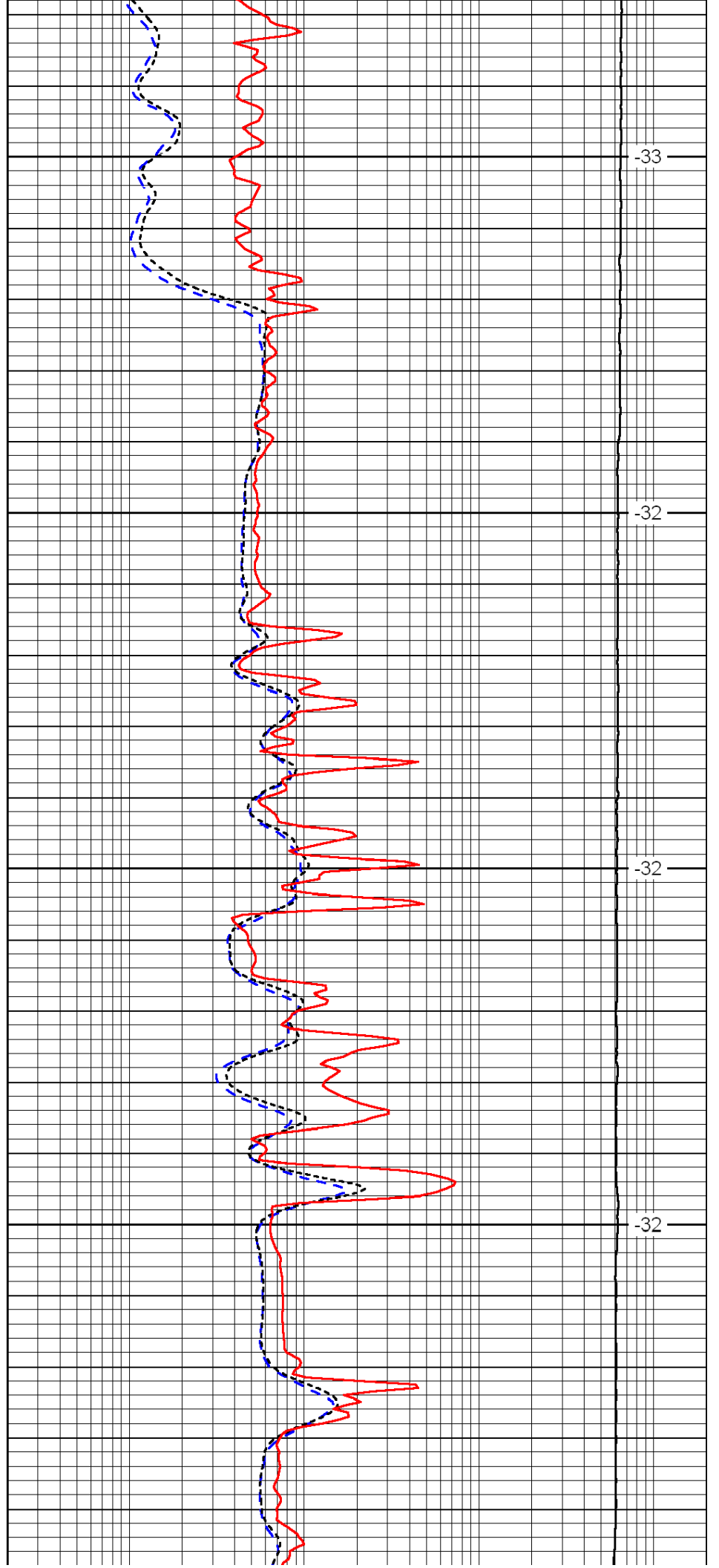


3550

3600

3650

3700

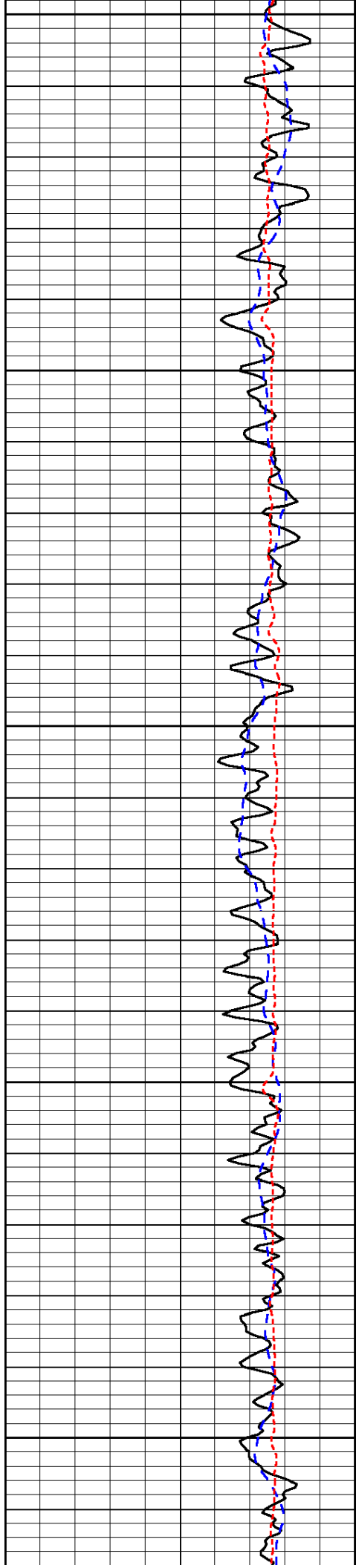


-33

-32

-32

-32



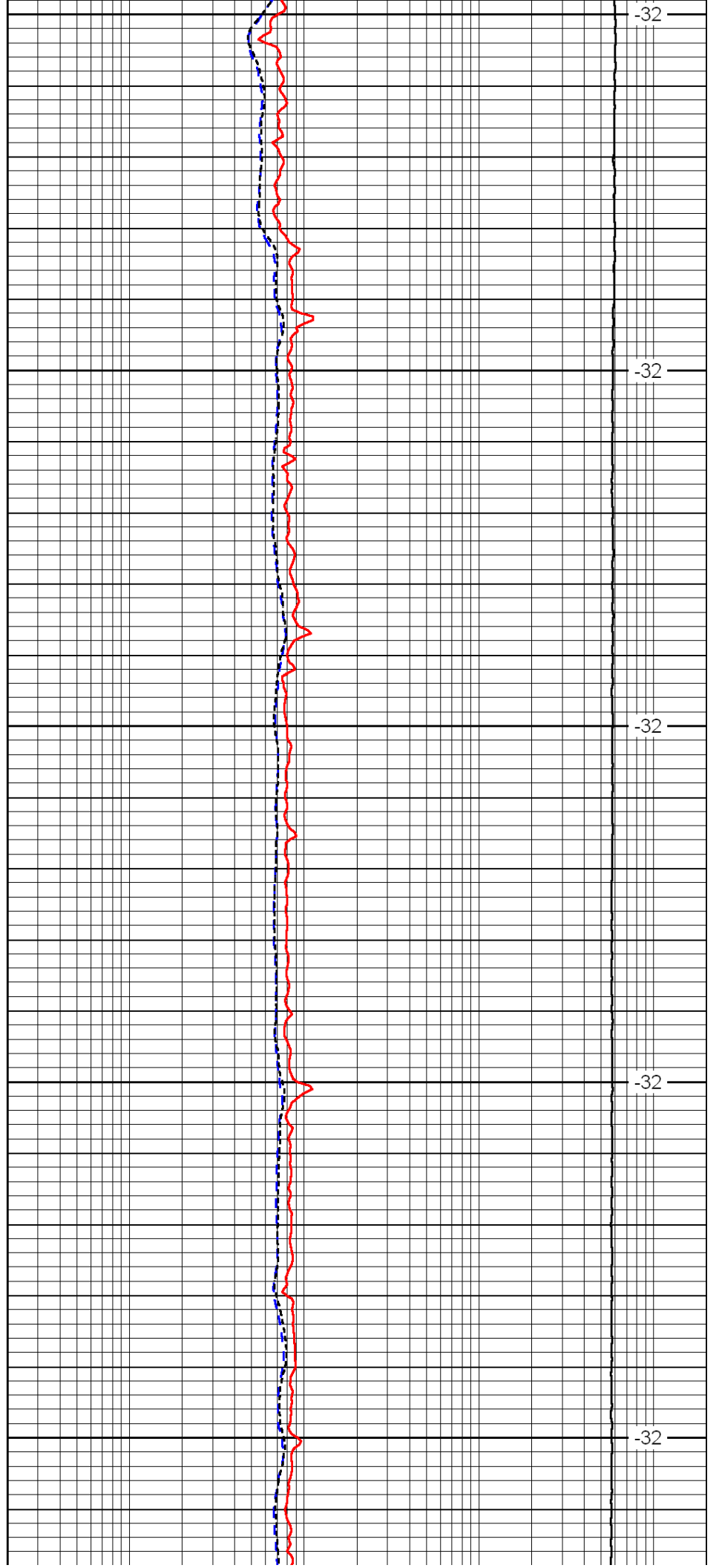
3750

3800

3850

3900

3950



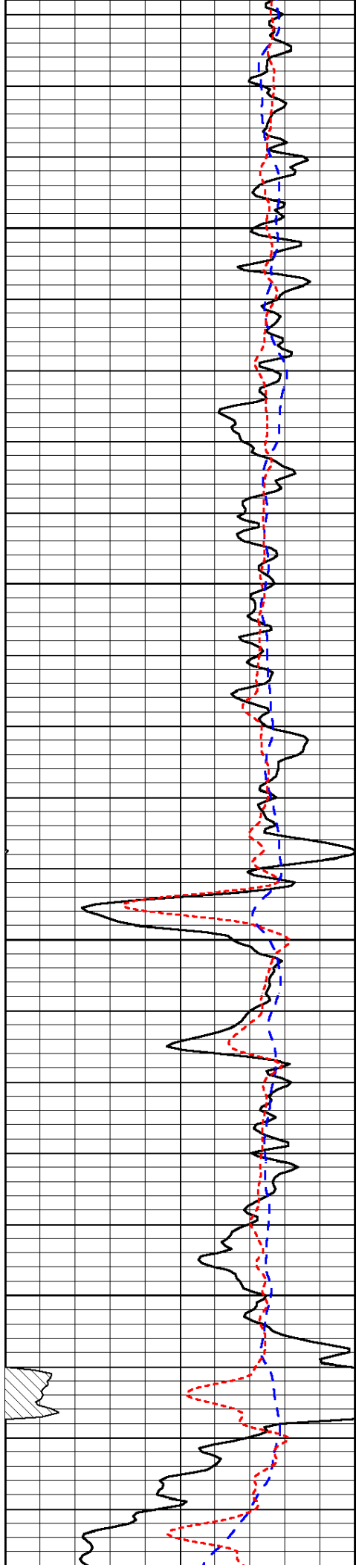
-32

-32

-32

-32

-32



4000

4050

4100

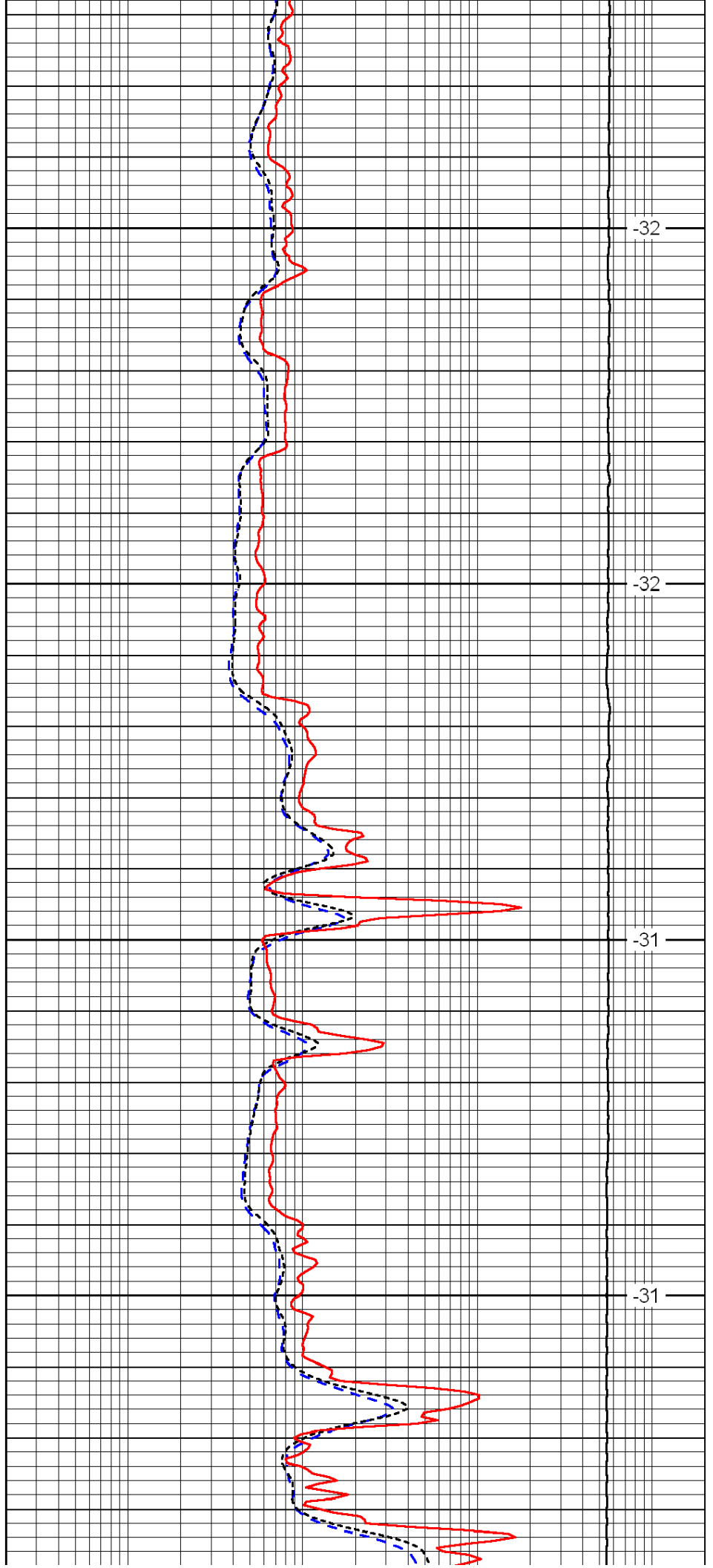
4150

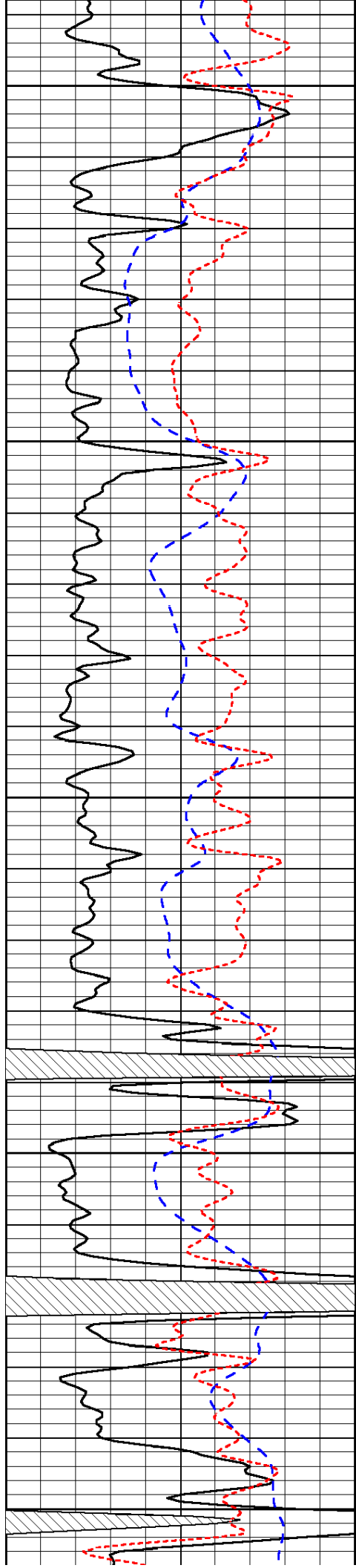
-32

-32

-31

-31





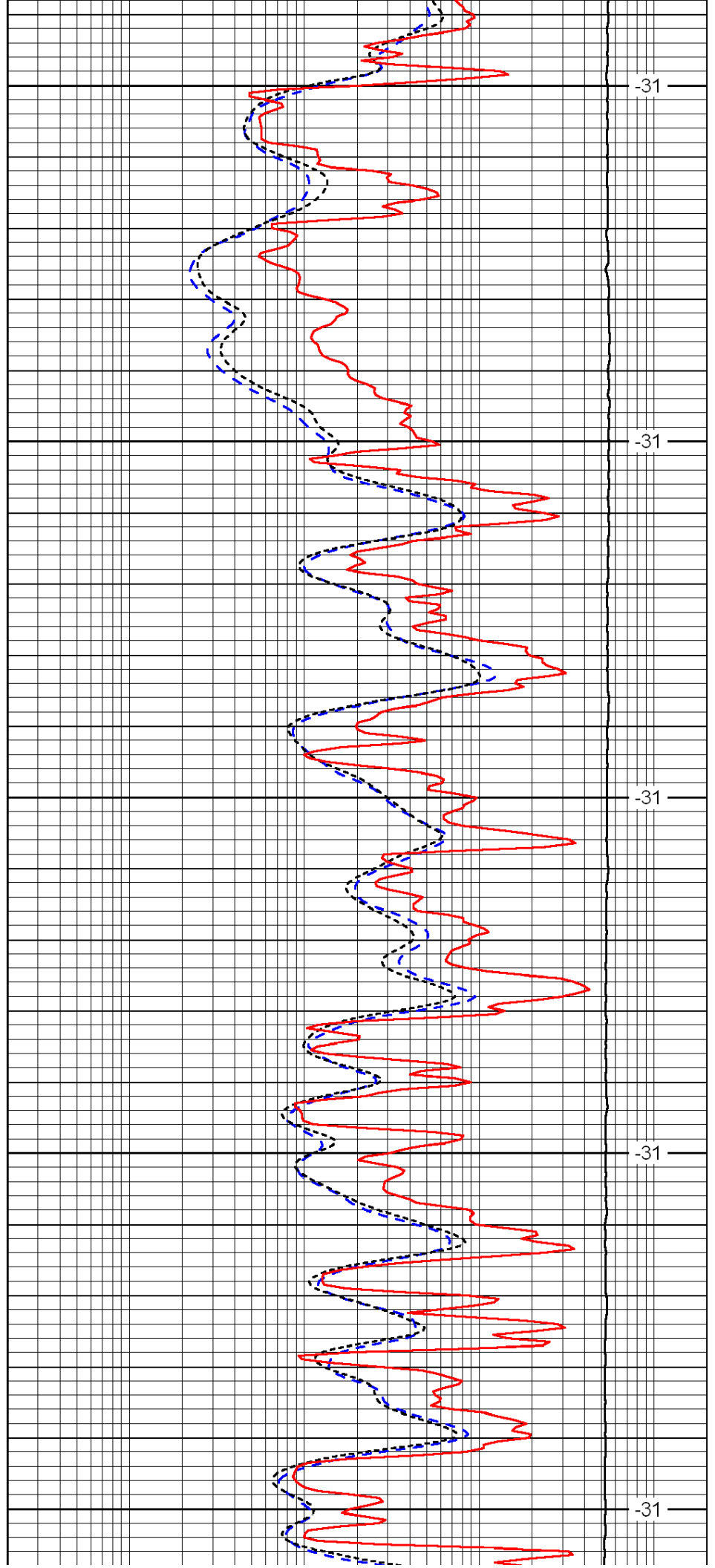
4200

4250

4300

4350

4400



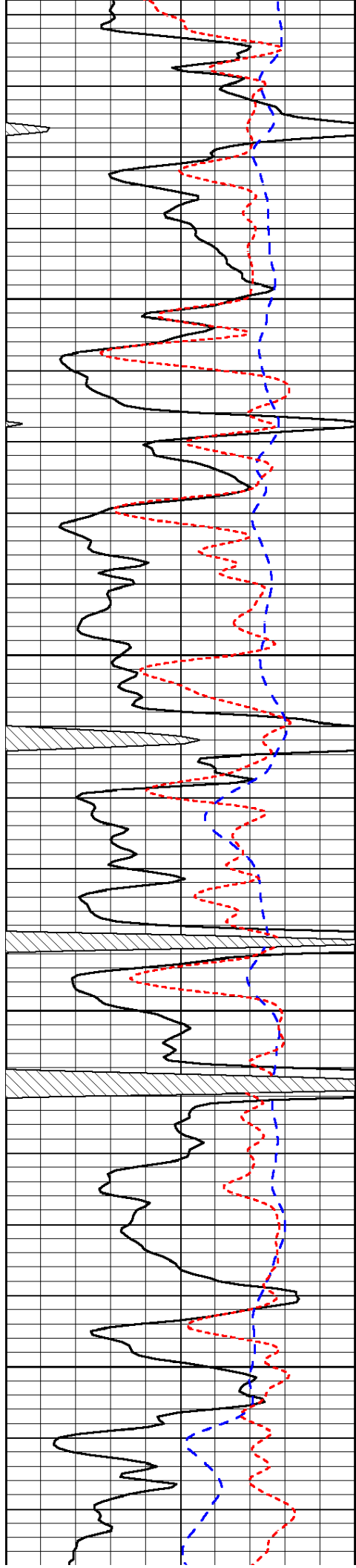
-31

-31

-31

-31

-31

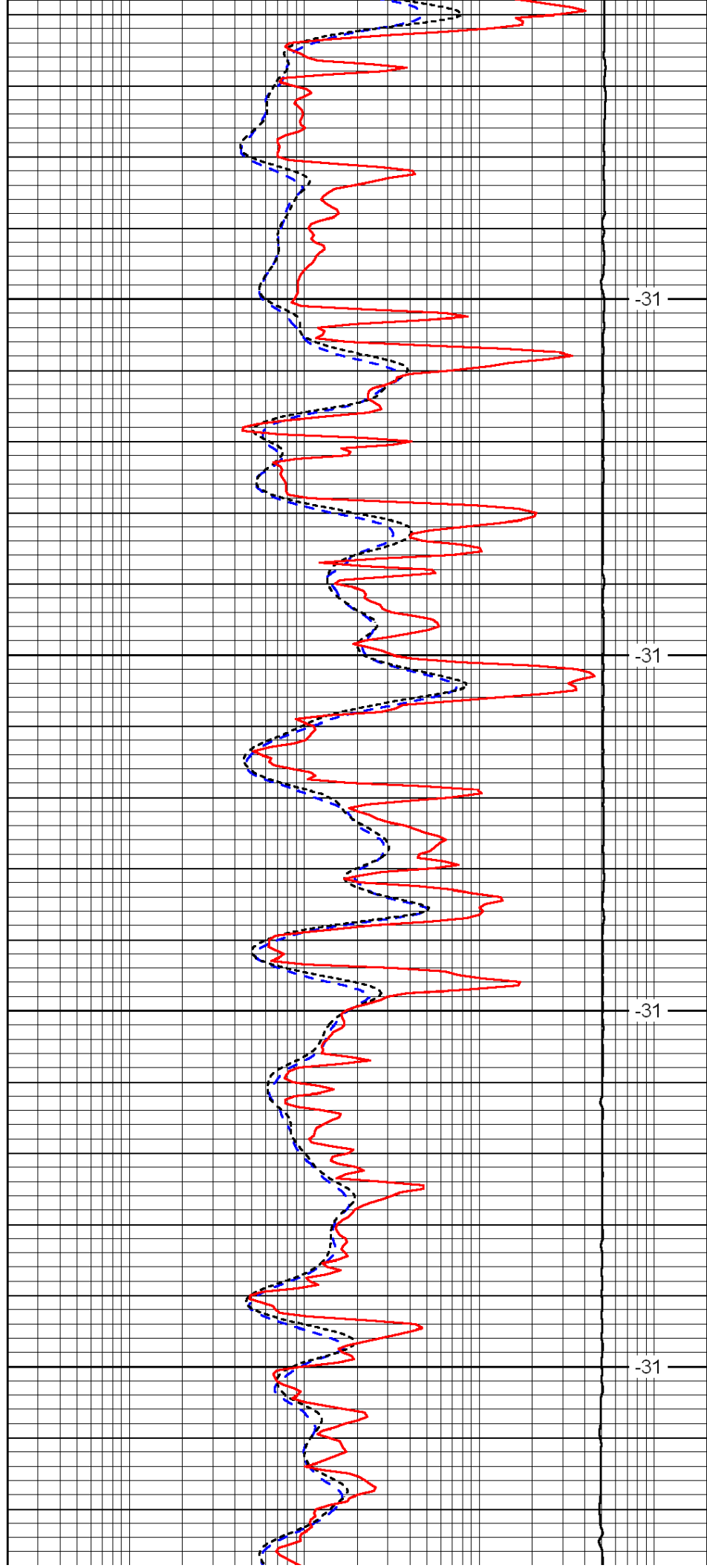


4450

4500

4550

4600

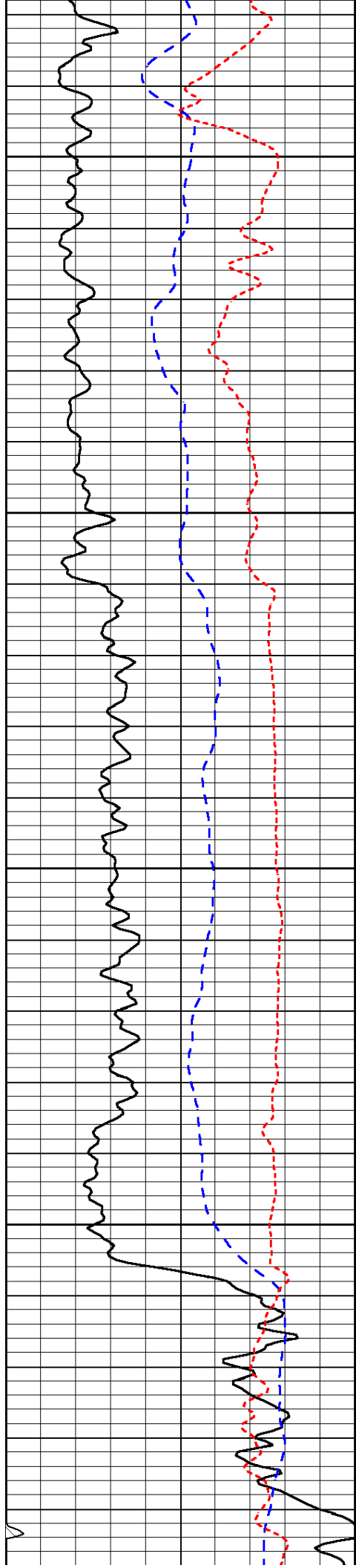


-31

-31

-31

-31

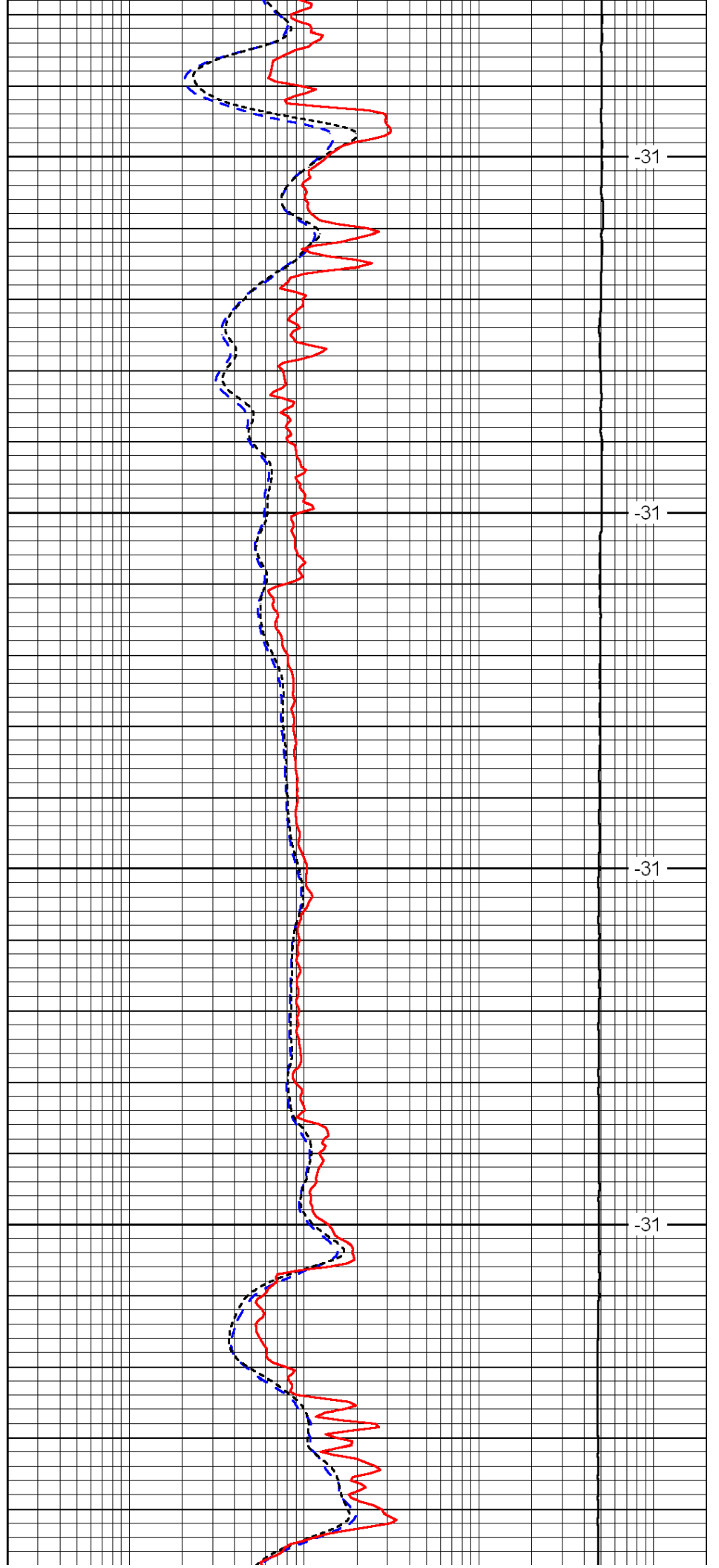


4650

4700

4750

4800

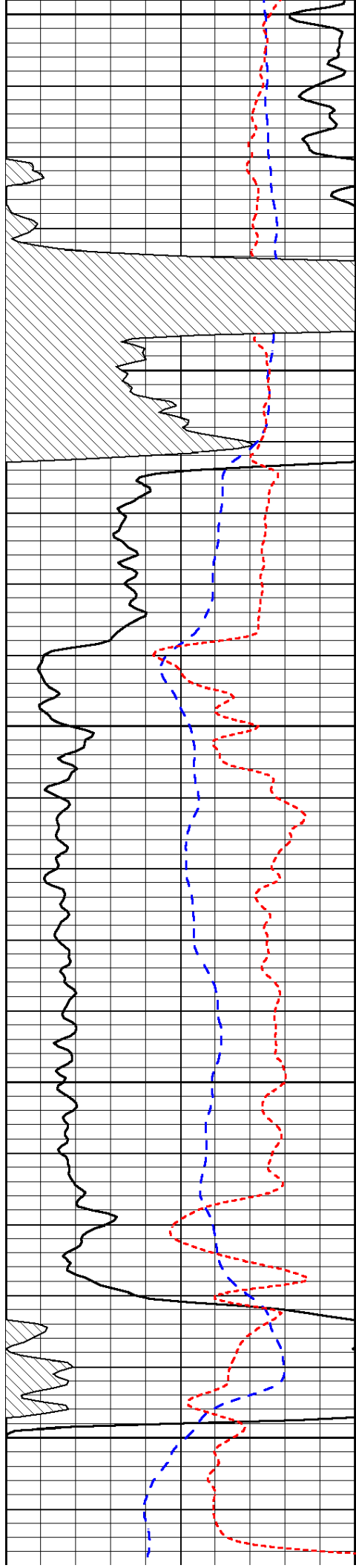


-31

-31

-31

-31



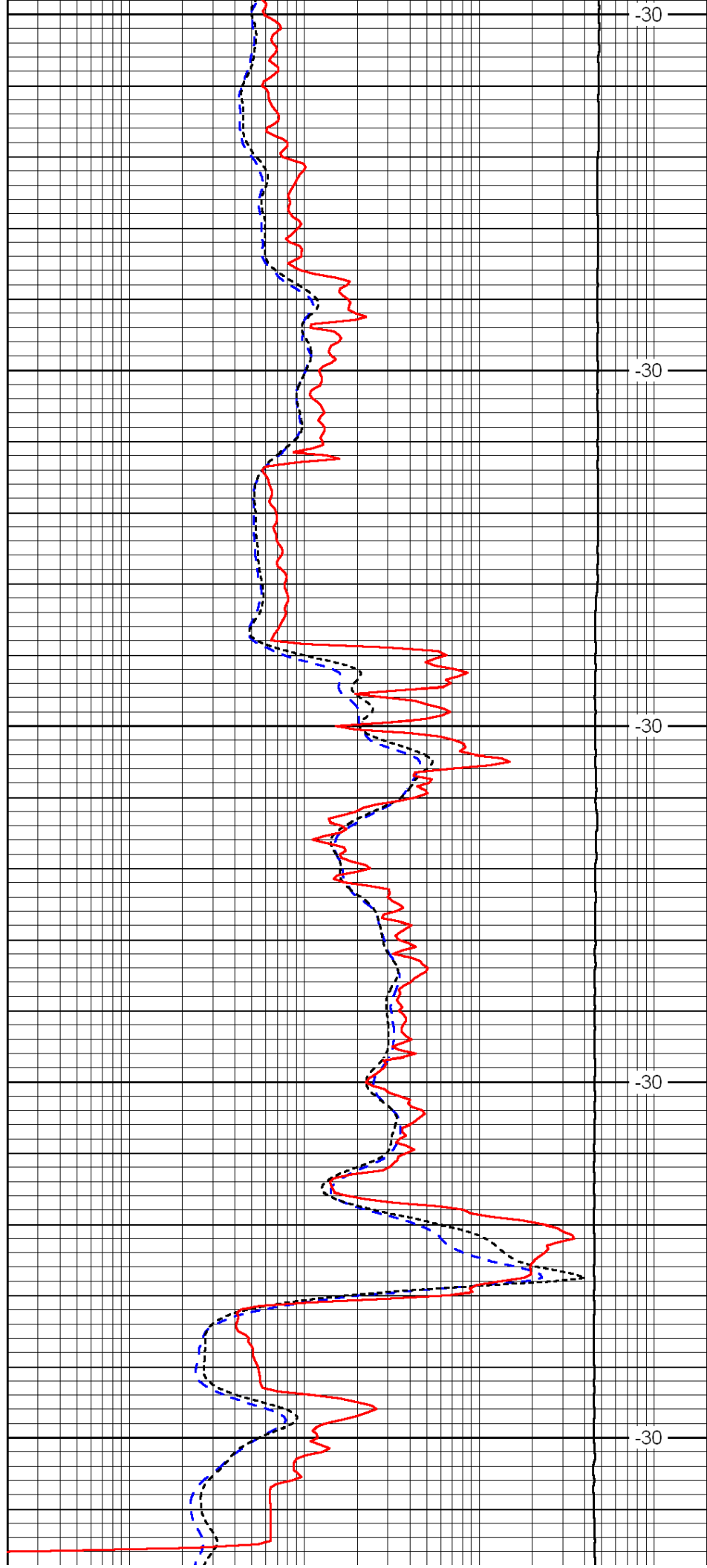
4850

4900

4950

5000

5050



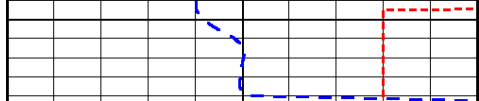
-30

-30

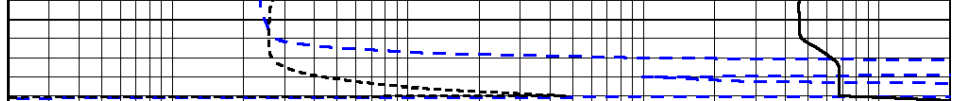
-30

-30

-30



0	Gamma Ray	150
-200	SP (mV)	0
-160	Rxo / Rt	40



0.2	Deep Resistivity	2000
0.2	Medium Resistivity	2000
0.2	Shallow Resistivity	2000
15000	Line Tension	0

LSPD