



DIGITAL LOG (785) 625-3858

Microresistivity Log

15-101-22,325-00-00

API No.	Company	Larson Engineering, Inc.
	Well	Gail No. 1-21
	Field	Reifschneider Southeast
	County	Lane State
	Lane	Kansas
Location	SE SW NE NE 1165' FNL & 950' FEL	
Sec: 21	Twp: 18 S	Rge: 29 W
Permanent Datum	Ground Level	Elevation 2808
Log Measured From	Kelly Bushing	7 Ft. Above Perm. Datum
Drilling Measured From	Kelly Bushing	
		Other Services CNL/CDL DIL
		Elevation K.B. 2815 D.F. G.L. 2808

Date	11/14/2011
Run Number	Two
Depth Driller	4655
Depth Logger	4659
Bottom Logged Interval	4658
Top Log Interval	3600
Casing Driller	8.625 @ 261
Casing Logger	257
Bit Size	7.875
Type Fluid in Hole	Chemical
Salinity, ppm CL	2600
Density / Viscosity	9.1   59
pH / Fluid Loss	10.5   6.8
Source of Sample	Flowline
Rm @ Meas. Temp	.70 @ 62
Rmf @ Meas. Temp	.53 @ 62
Rmc @ Meas. Temp	.95 @ 62
Source of Rmf / Rmc	Charts
Rm @ BHT	.35 @ 123
Operating Rig Time	4 1/2 Hours
Max Rec. Temp. F	123
Equipment Number	15
Location	Hays
Recorded By	Dayton Kerr
Witnessed By	Vern Schrag

<<< Fold Here >>>

All interpretations are opinions based on inferences from electrical or other measurements and we cannot and do not guarantee the accuracy or correctness of any interpretation, and we shall not, except in the case of gross or willful negligence on our part, be liable or responsible for any loss, costs, damages, or expenses incurred or sustained by anyone resulting from any interpretation made by any of our officers, agents or employees. These interpretations are also subject to our general terms and conditions set out in our current Price Schedule.

Comments

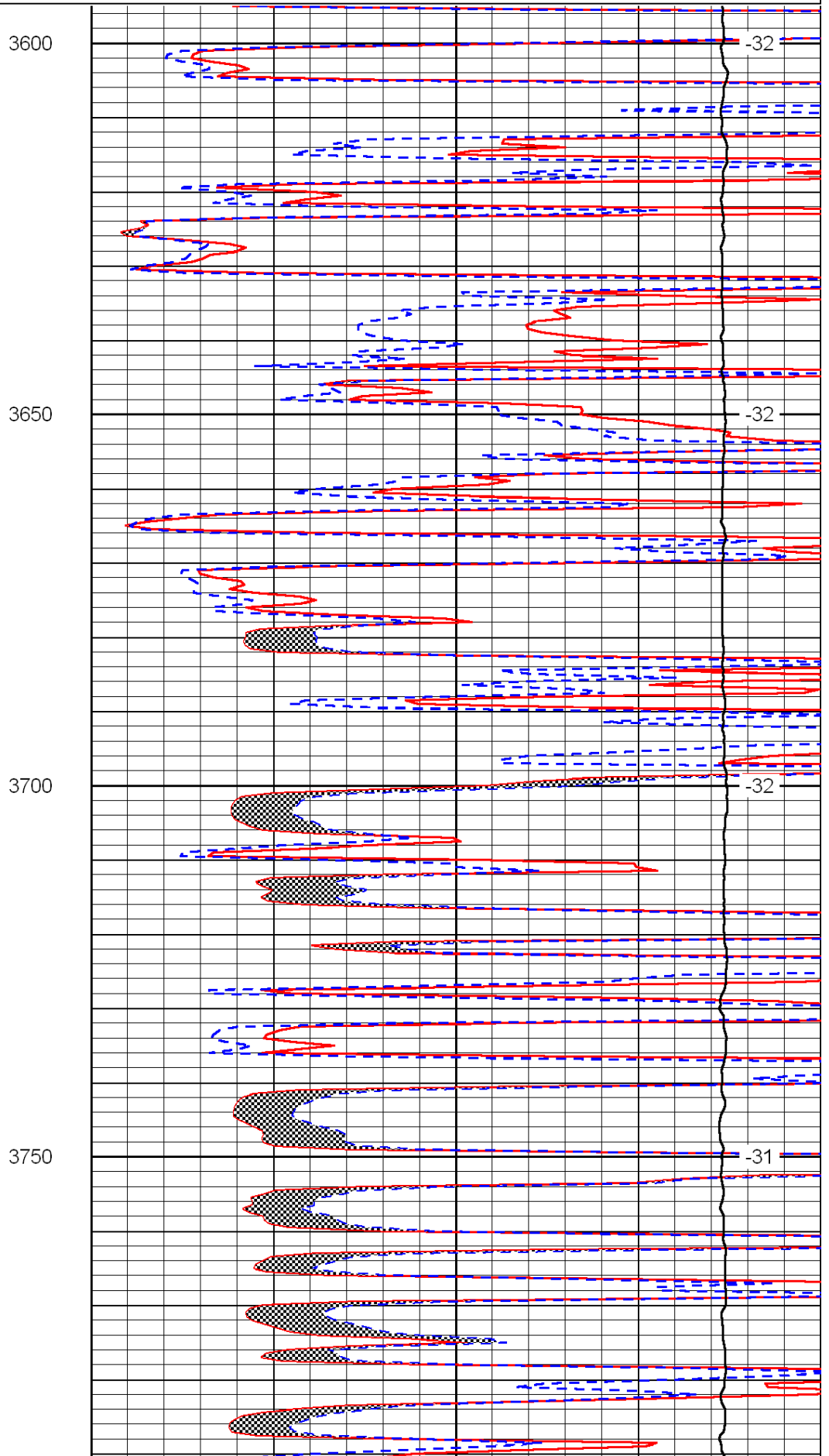
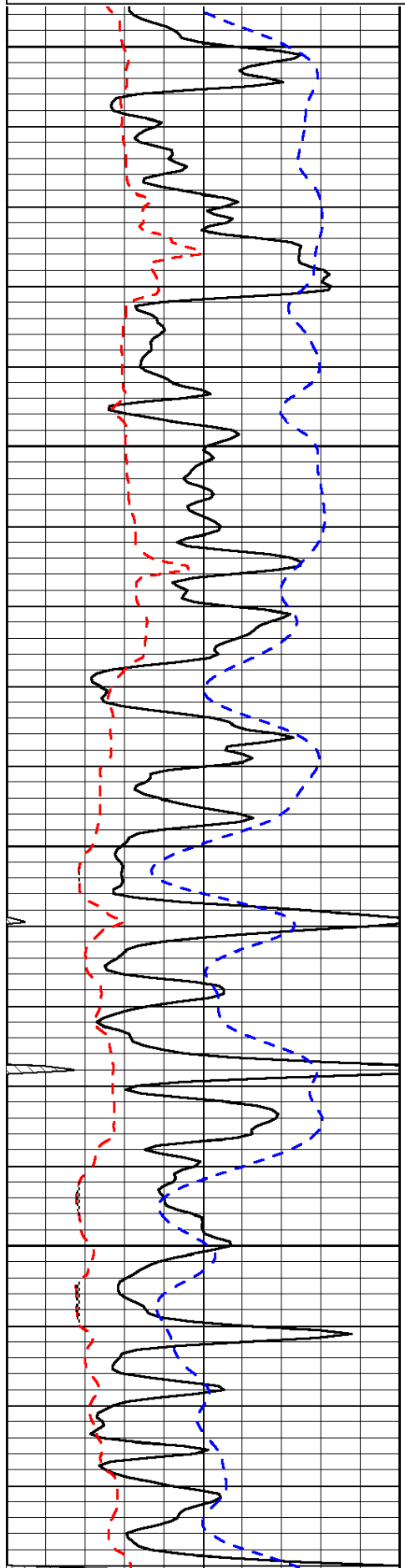
Thank you for using Log-Tech, Inc.  
 (785) 625-3858  
 Dighton KS,  
 West 3 1/4, 1/4 South,  
 East Into

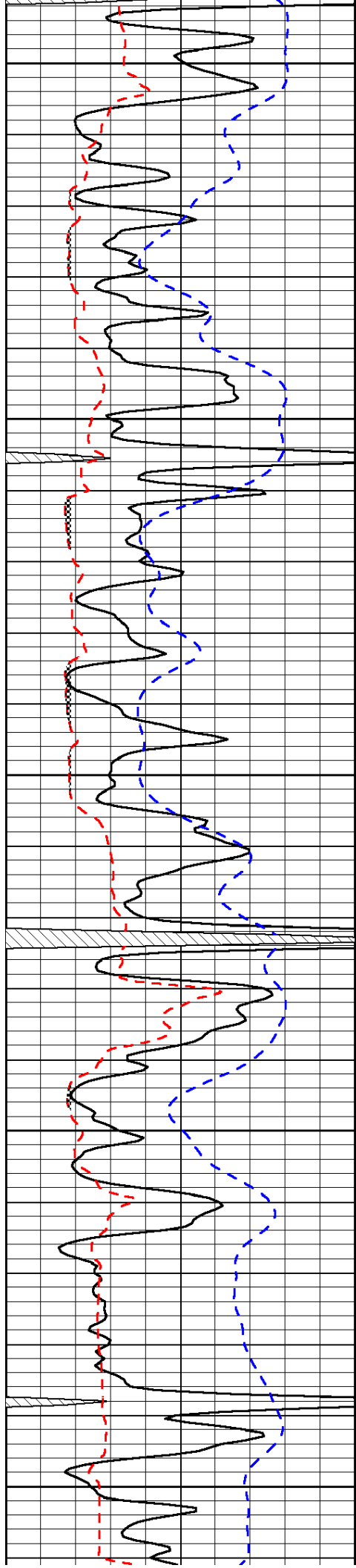
Database File: c:\warrior\data\larson\_gail no. 1-21\larson\_gail\_1\_21hd.db  
 Dataset Pathname: DIL\larstk  
 Presentation Format: micro  
 Dataset Creation: Mon Nov 14 23:23:13 2011  
 Charted by: Depth in Feet scaled 1:240

0	Gamma Ray	150
6	Micro Log Caliper (GAPI)	16
-200	SP (mV)	0

0	Micro Inverse 1 X 1	40
0	Micro Normal 2"	40
15000	Line Weight	0

LSPD





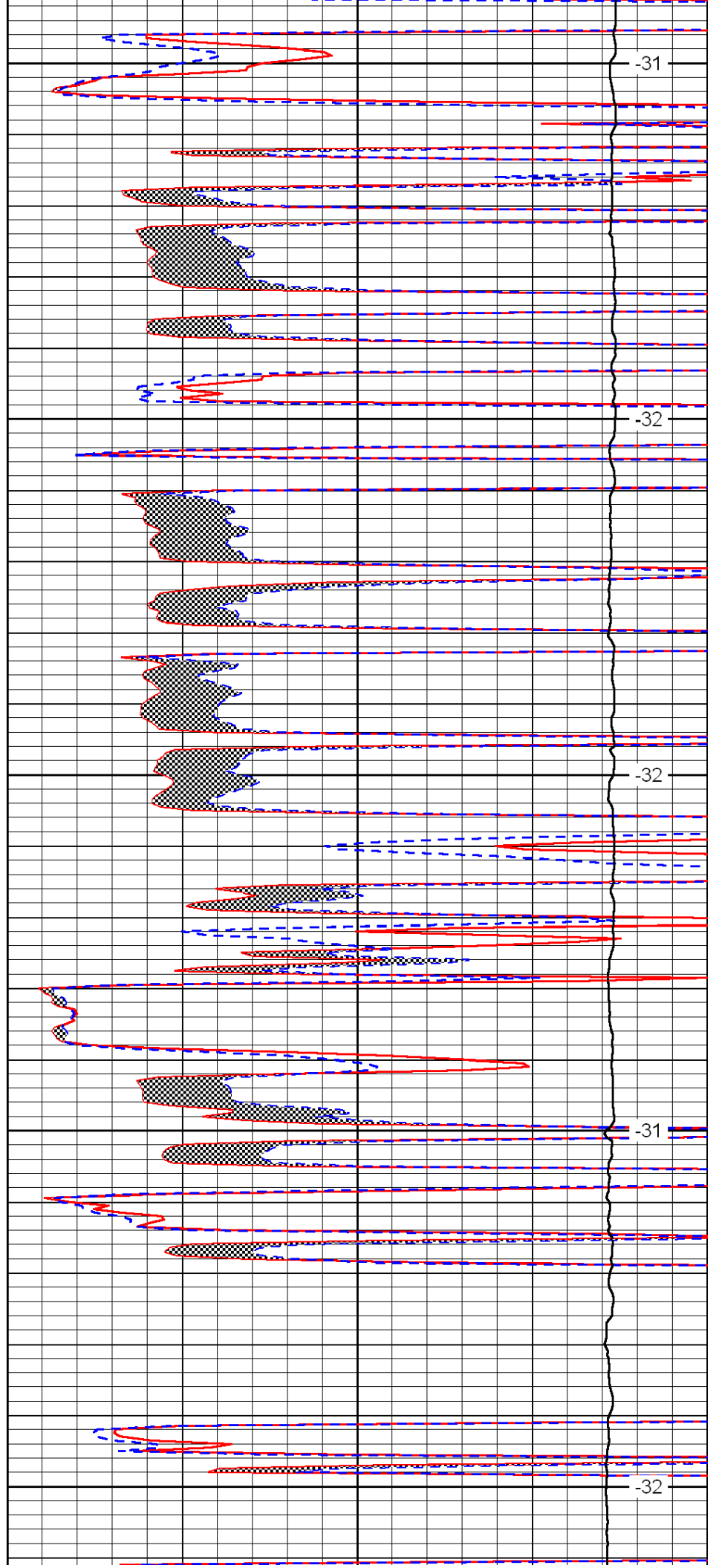
3800

3850

3900

3950

4000



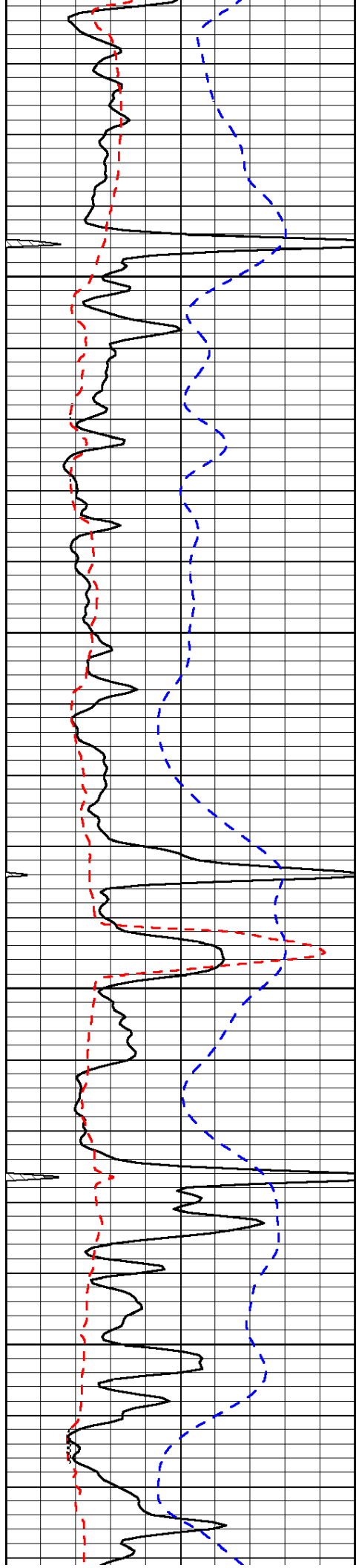
-31

-32

-32

-31

-32

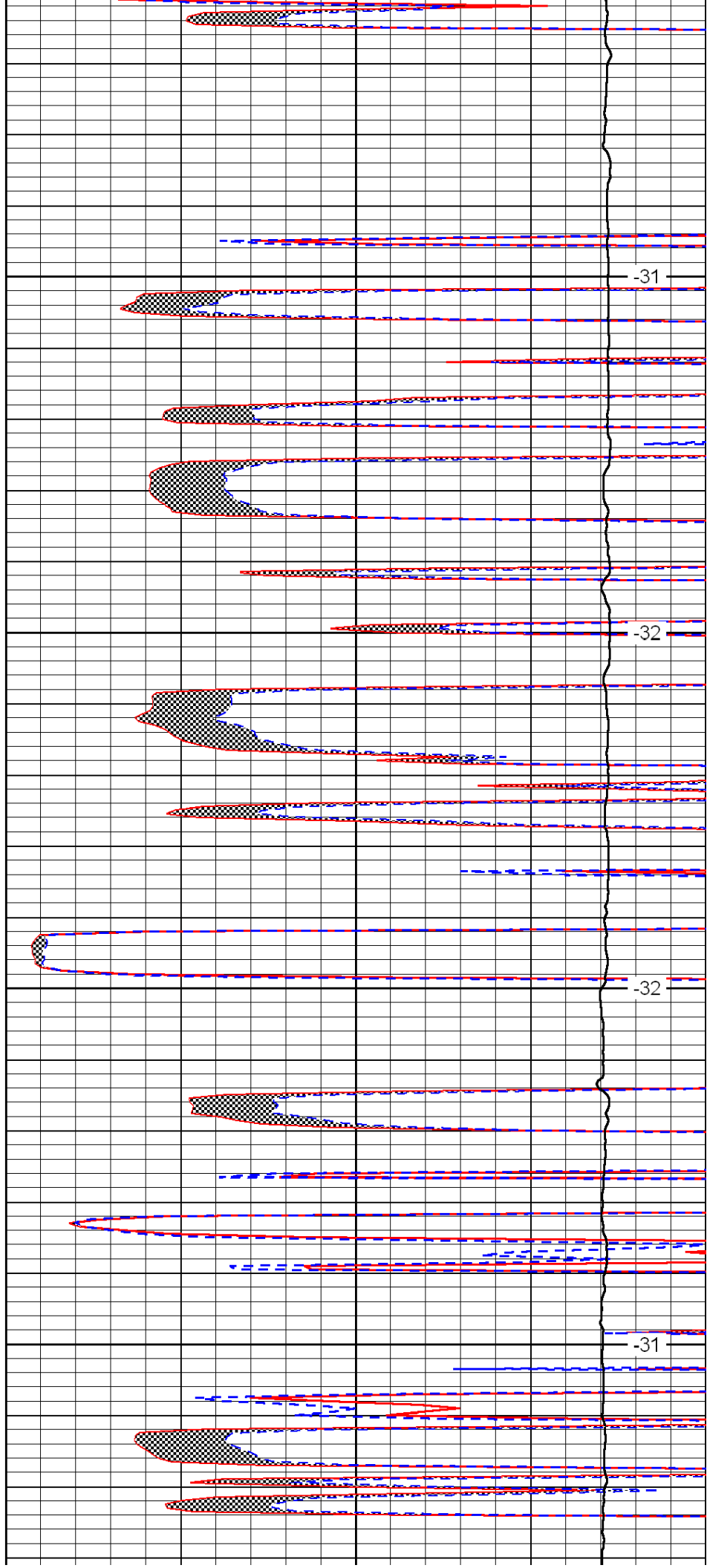


4050

4100

4150

4200

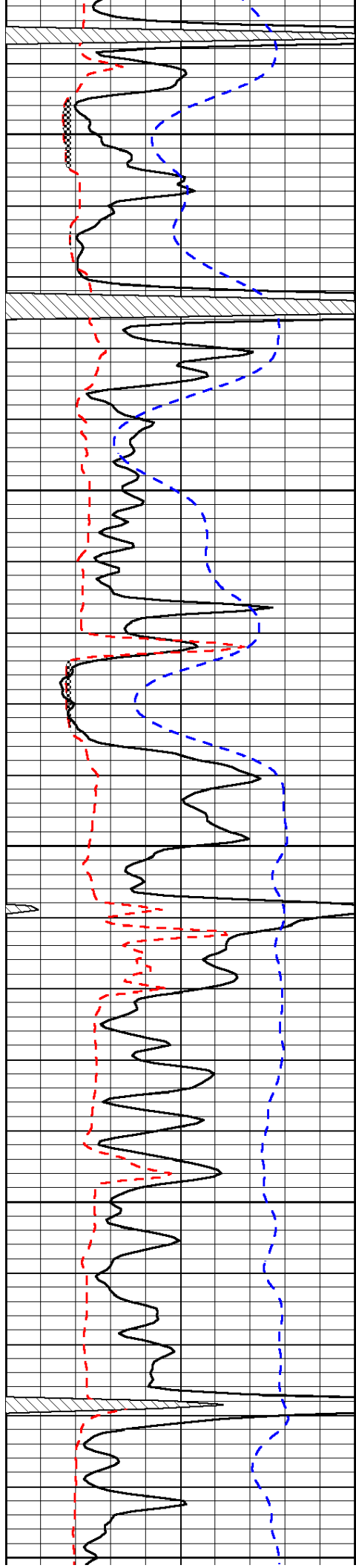


-31

-32

-32

-31



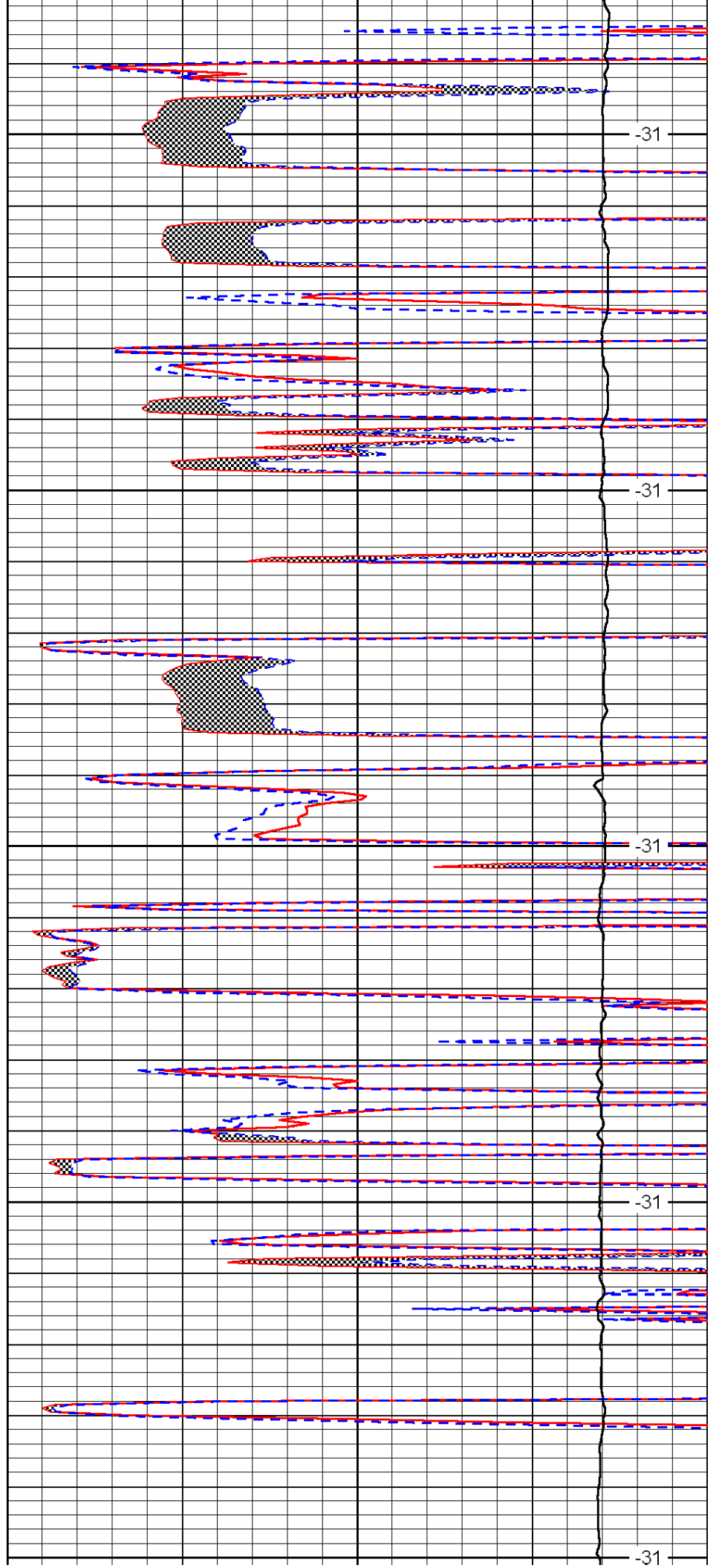
4250

4300

4350

4400

4450



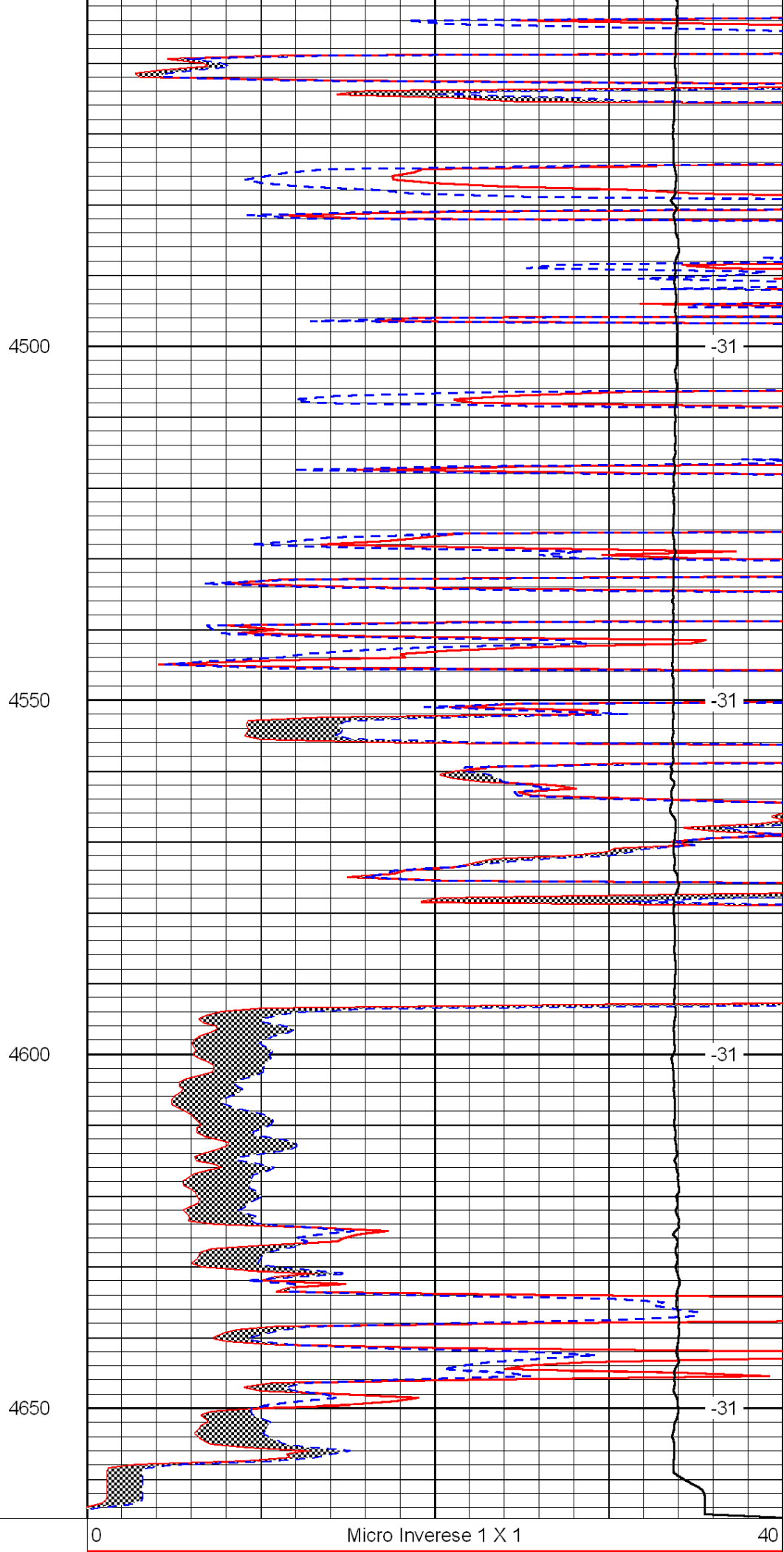
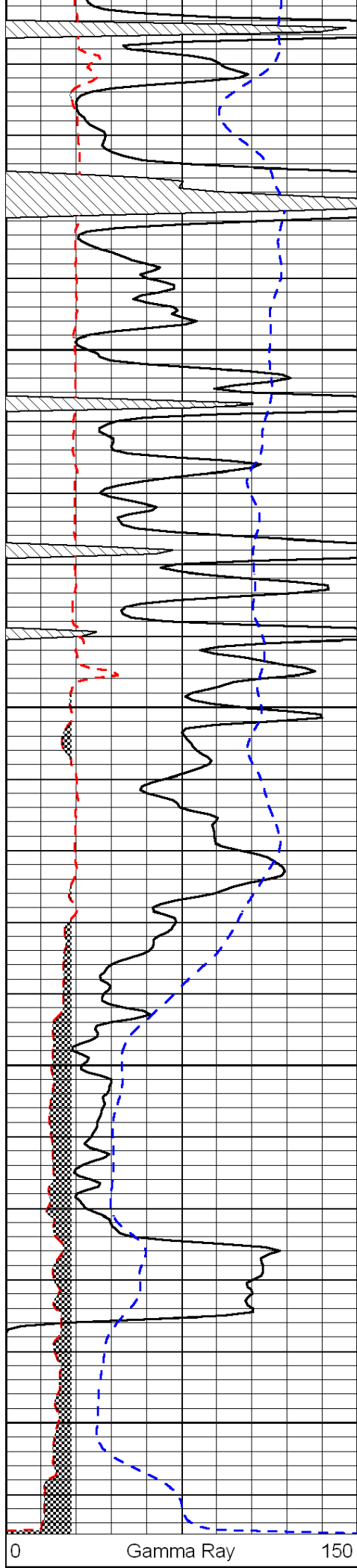
-31

-31

-31

-31

-31



6	Micro Log Caliper (GAPI)	16
-200	SP (mV)	0

0	Micro Normal 2"	40
15000	Line Weight	0

LSPD
------