



Dual Induction Log

DIGITAL LOG

(785) 625-3858

15-163-23,987-00-00

API No.

Company **H&B Petroleum Corporation**

Well **Ouderkirk No.15**

Field **Marcotte**

County **Rooks** State **Kansas**

Location **NW SE NE NW
4440' FSL & 3120' FEL**

Sec: **7** Twp: **10S** Rge: **19W**

Permanent Datum **Ground Level** Elevation **2230**
 Log Measured From **Kelly Bushing** **7** Ft. Above Perm. Datum
 Drilling Measured From **Kelly Bushing**

Other Services
 CNL/CDL
 Elevation
 K.B. 2237
 D.F. 2230
 G.L. 2230

Date	10/8/2011
Run Number	One
Depth Driller	3880
Depth Logger	3879
Bottom Logged Interval	3878
Top Log Interval	350
Casing Driller	8.625 @ 365
Casing Logger	365
Bit Size	7.875
Type Fluid in Hole	Chemical
Salinity, ppm CL	3,400
Density / Viscosity	9.0 50
pH / Fluid Loss	10.5 5.8
Source of Sample	Flowline
Rm @ Meas. Temp	.6 @ 62
Rmf @ Meas. Temp	.45 @ 62
Rmc @ Meas. Temp	.81 @ 62
Source of Rmf / Rmc	Charts
Rm @ BHT	.32 @ 115
Operating Rig Time	2 Hours
Max Rec. Temp. F	115
Equipment Number	17
Location	Hays
Recorded By	C. Desaire
Witnessed By	Kurt Talbott

<<< Fold Here >>>

All interpretations are opinions based on inferences from electrical or other measurements and we cannot and do not guarantee the accuracy or correctness of any interpretation, and we shall not, except in the case of gross or willful negligence on our part, be liable or responsible for any loss, costs, damages, or expenses incurred or sustained by anyone resulting from any interpretation made by any of our officers, agents or employees. These interpretations are also subject to our general terms and conditions set out in our current Price Schedule.

Comments

Thank you for using Log-Tech, Inc.
 (785) 625-3858

 Zurich KS,
 2 W to 8 Rd, 2 S, 1/2 W, S Into

Database File: hbhd.db
 Dataset Pathname: dil/hbstk2
 Presentation Format: dil2in
 Dataset Creation: Sat Oct 08 20:49:40 2011
 Charted by: Depth in Feet scaled 1:600

0 Gamma Ray 150
-200 SP 0

0 Shallow Resistivity 50
0 Deep Resistivity 50

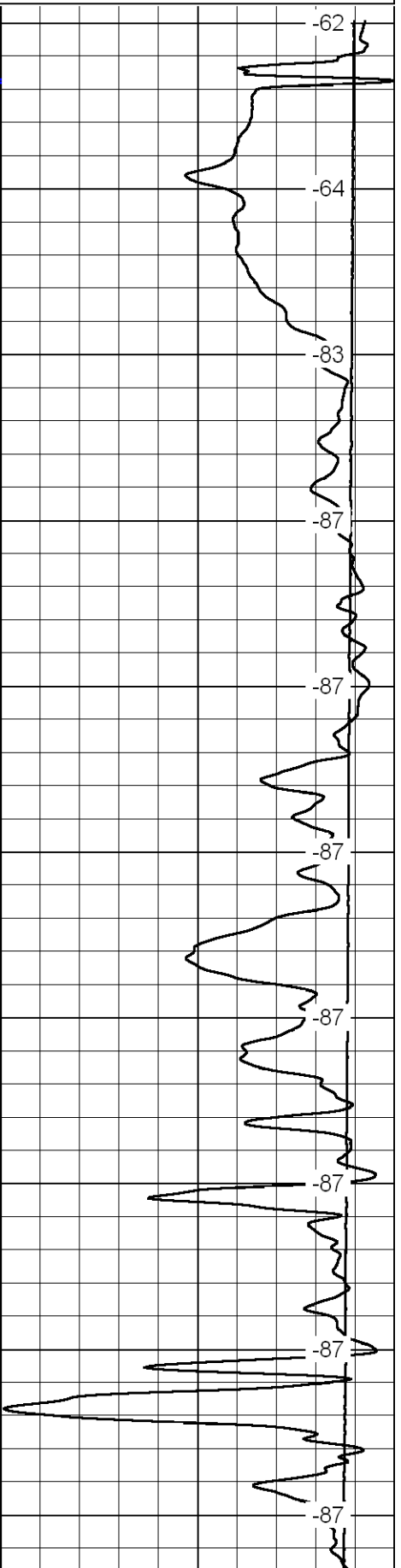
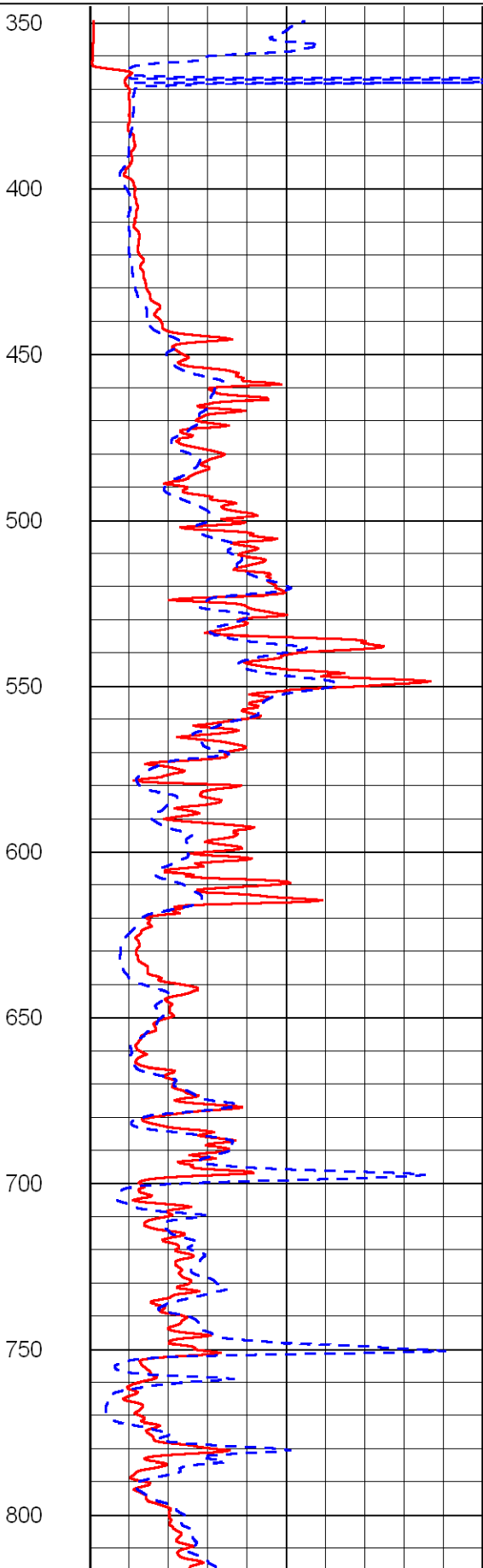
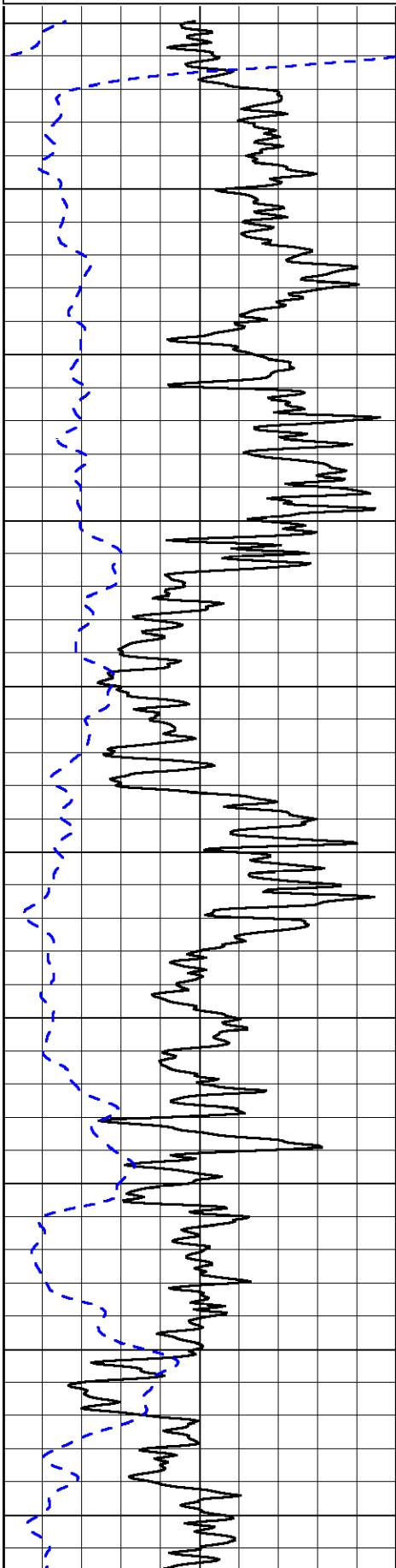
LSPD

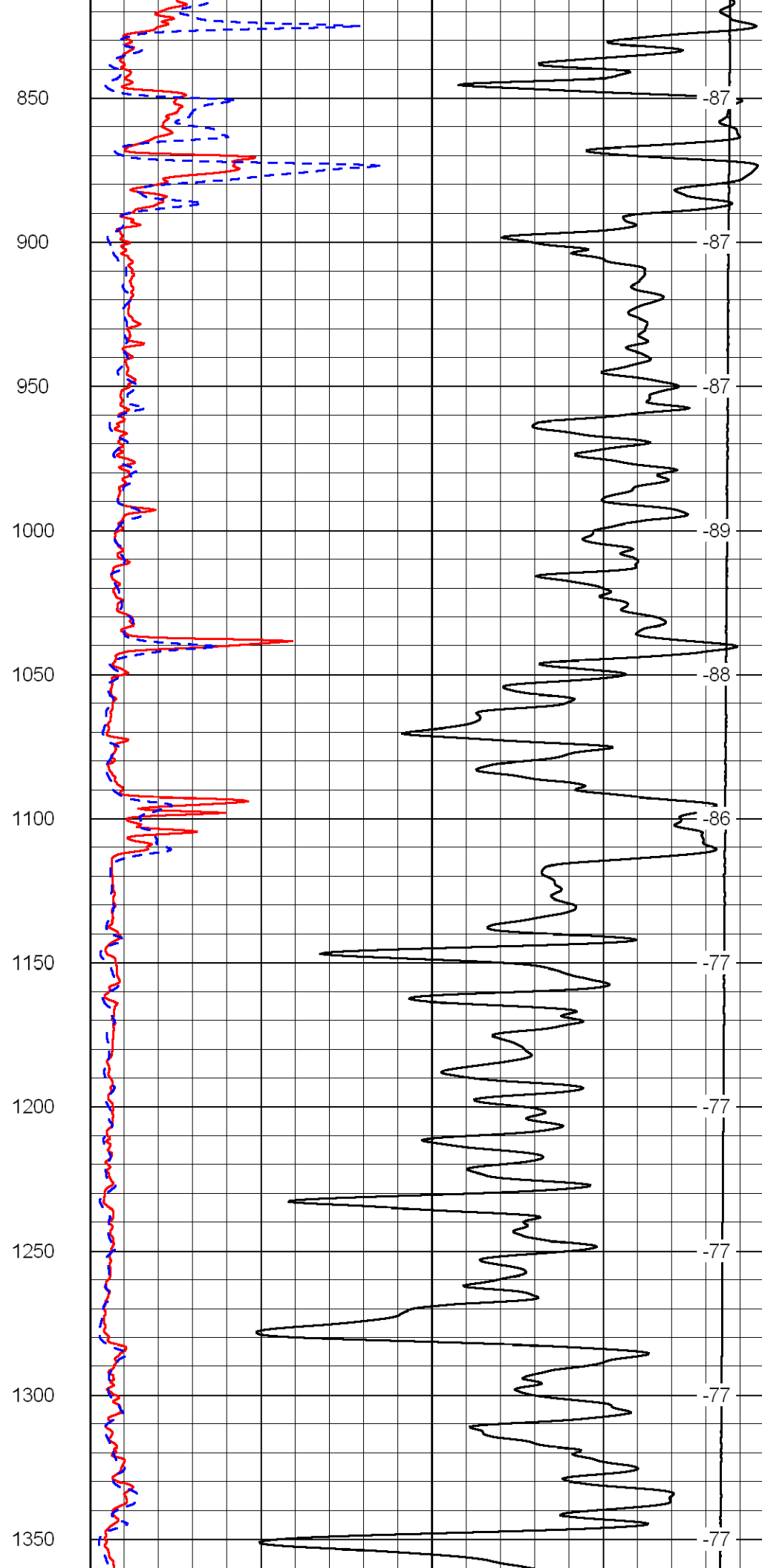
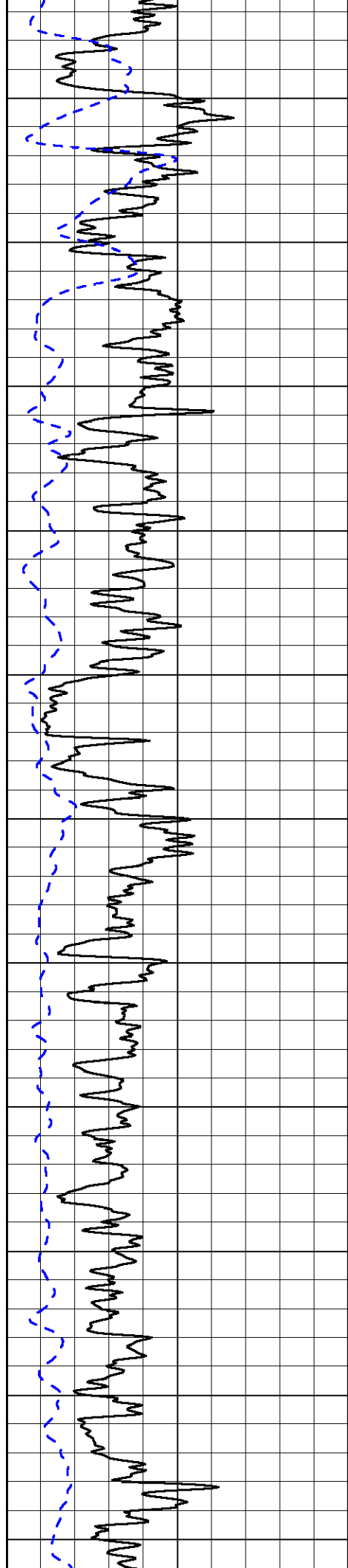
1000 Conductivity 0

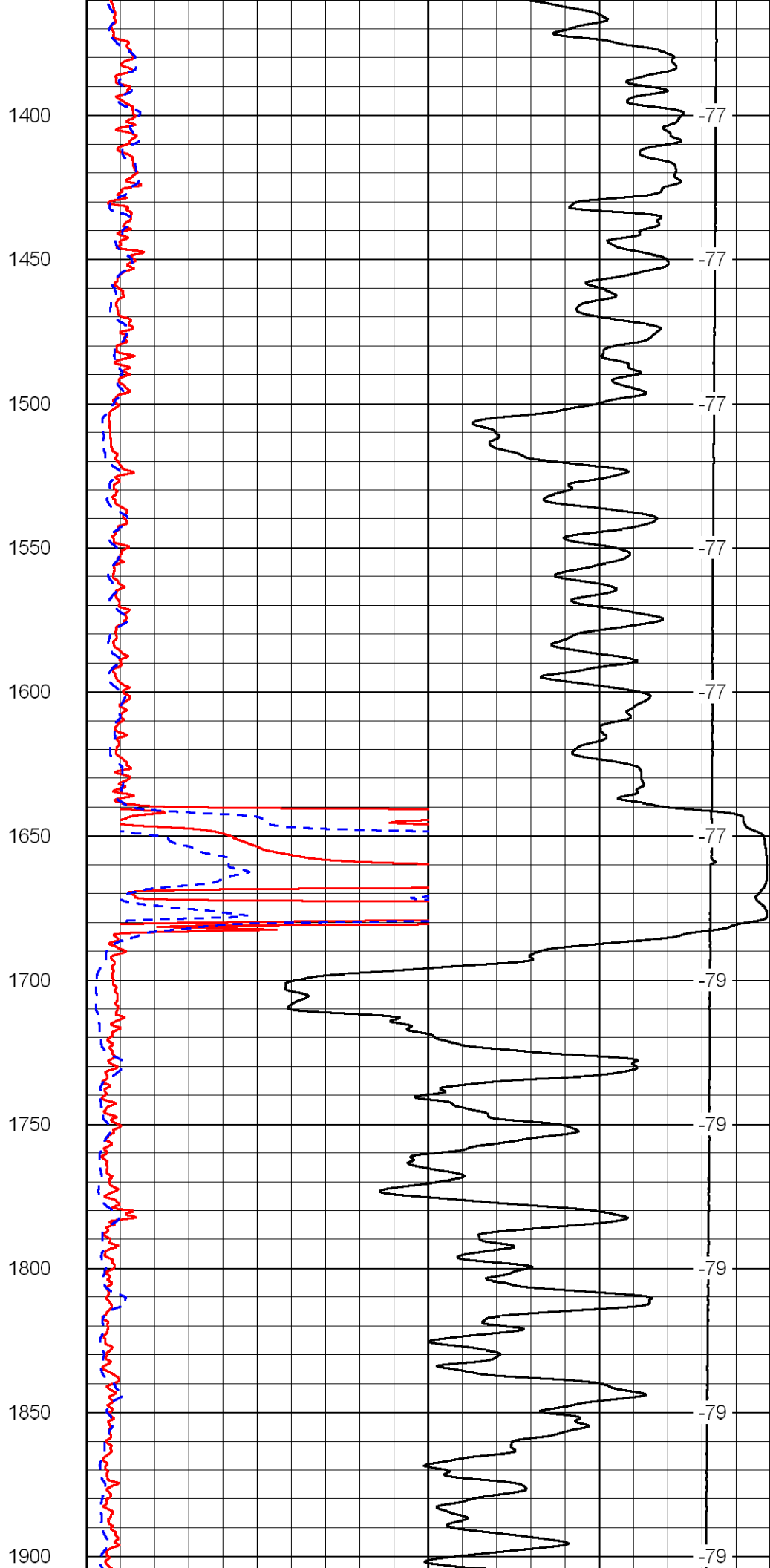
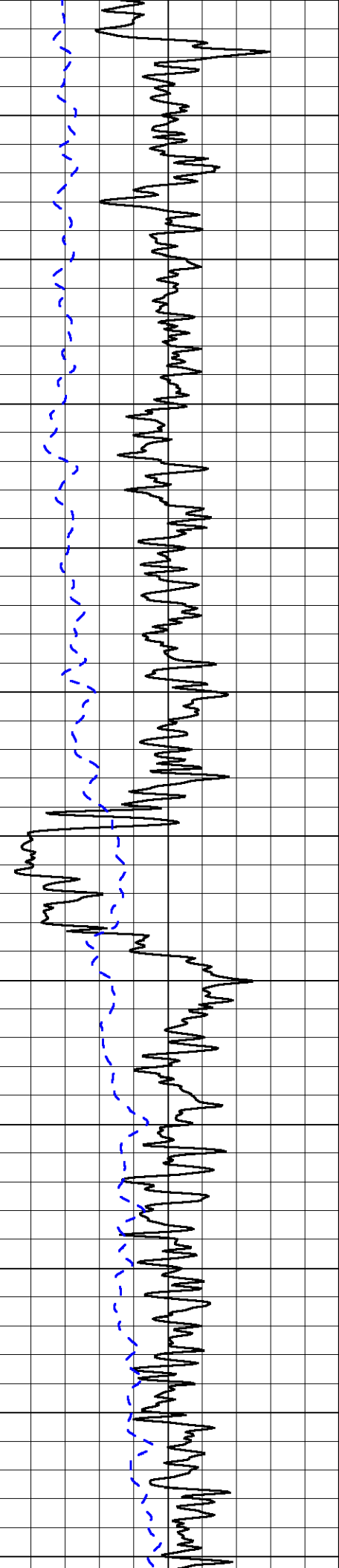
15000 Line Tension 0

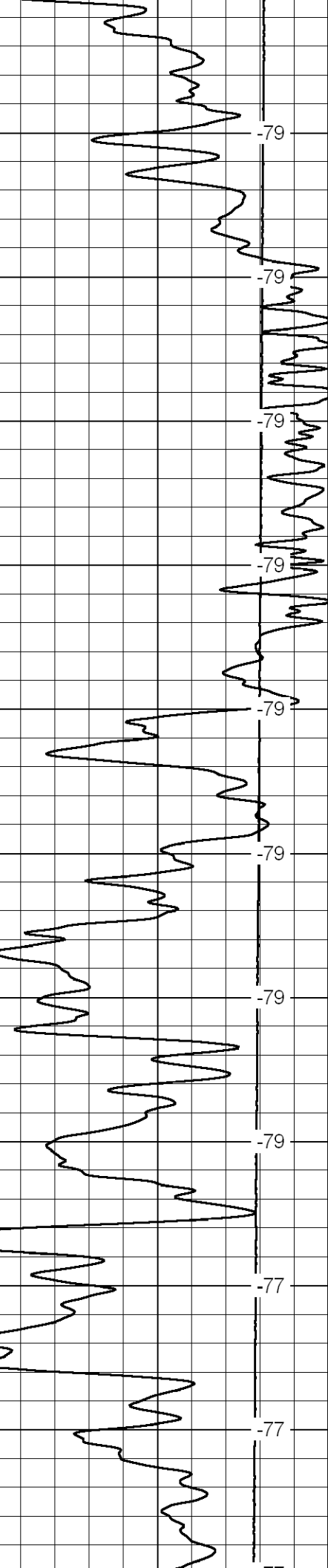
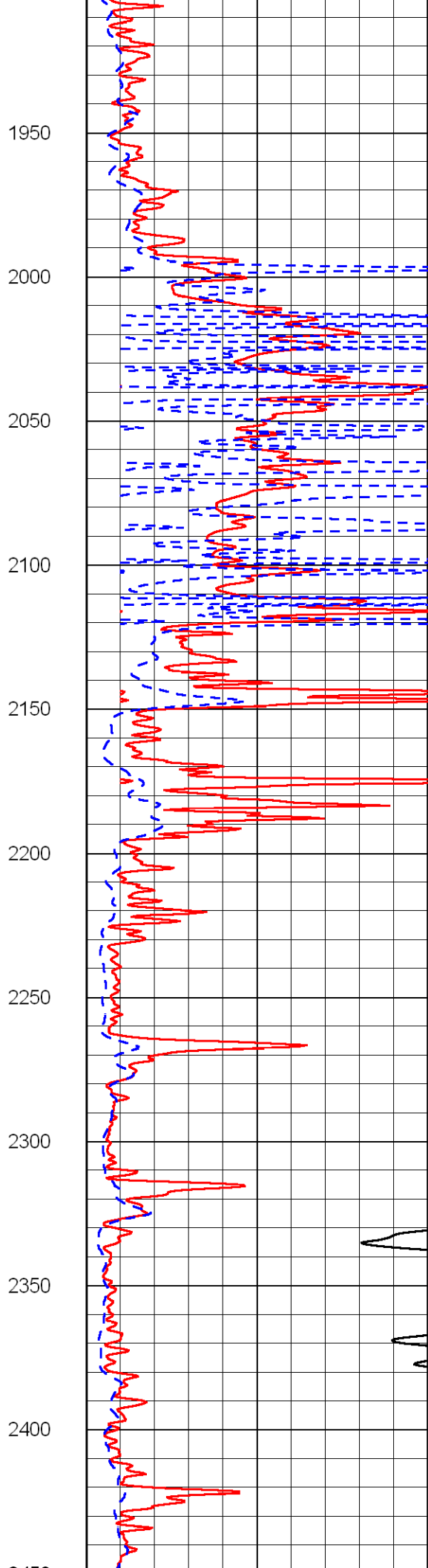
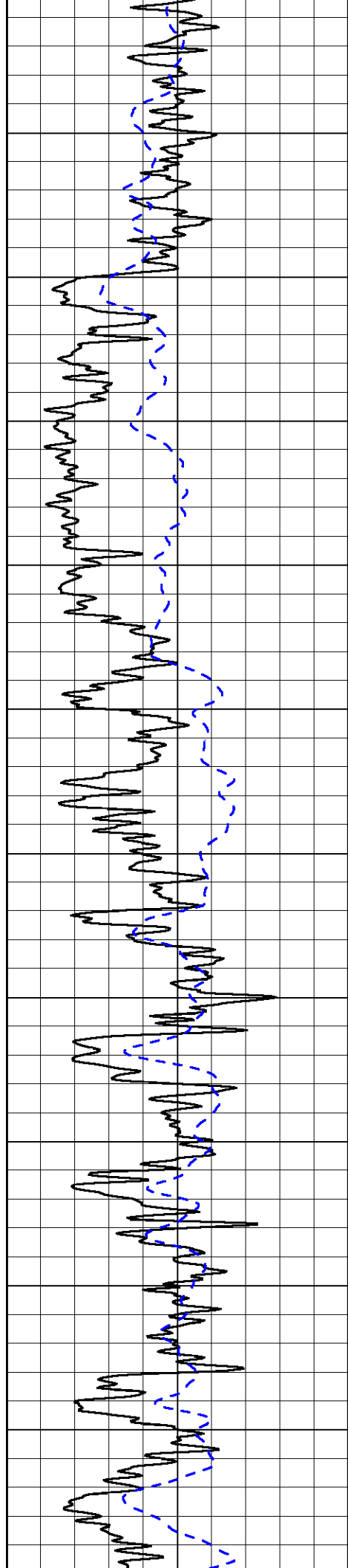
50 Shallow Resistivity 500

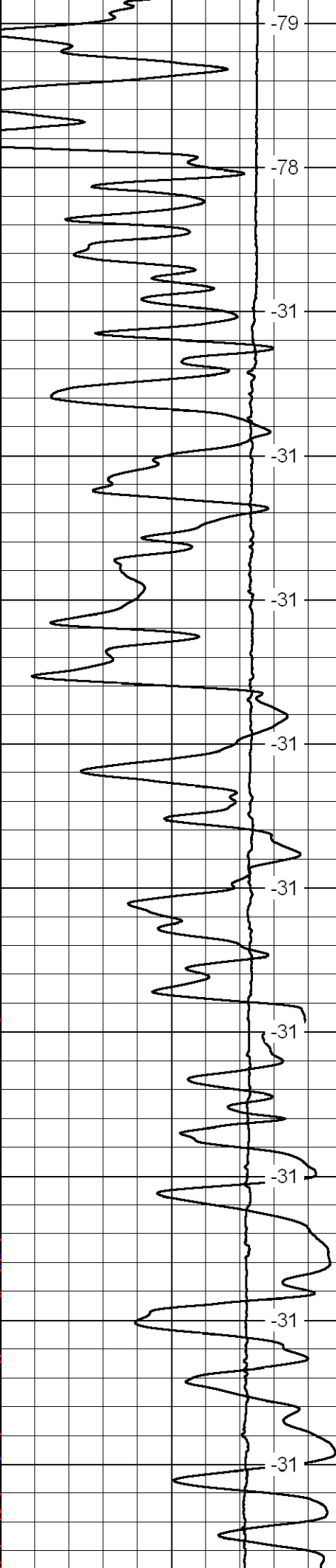
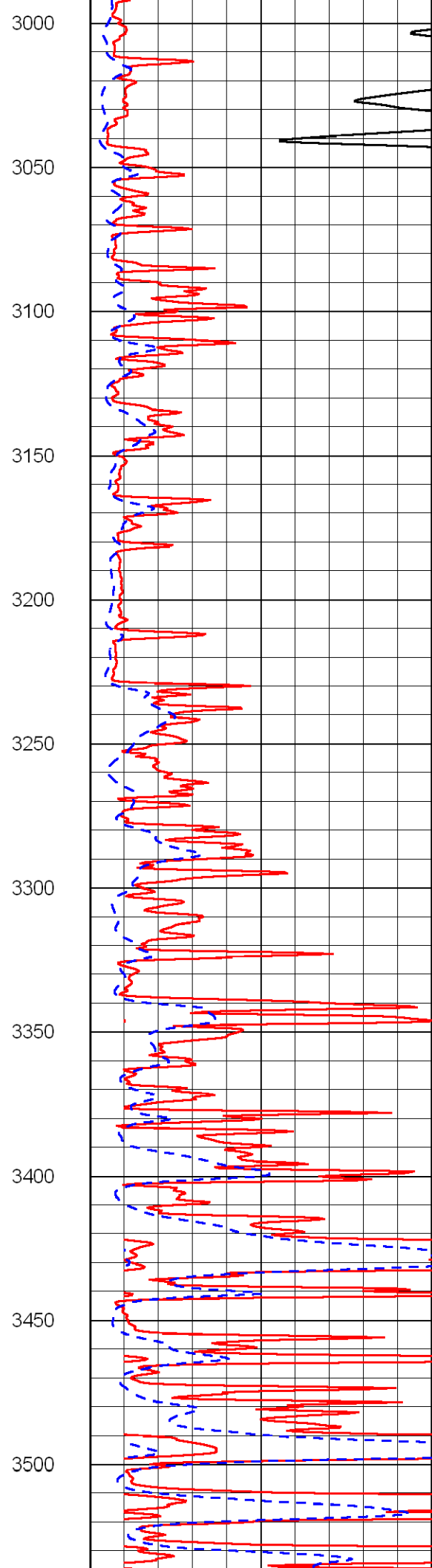
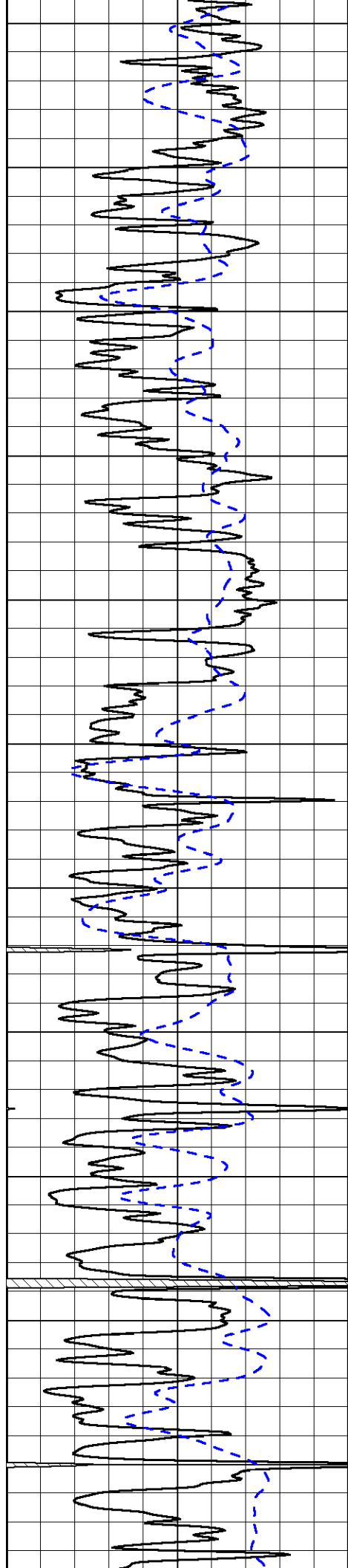
50 Deep Resistivity 500





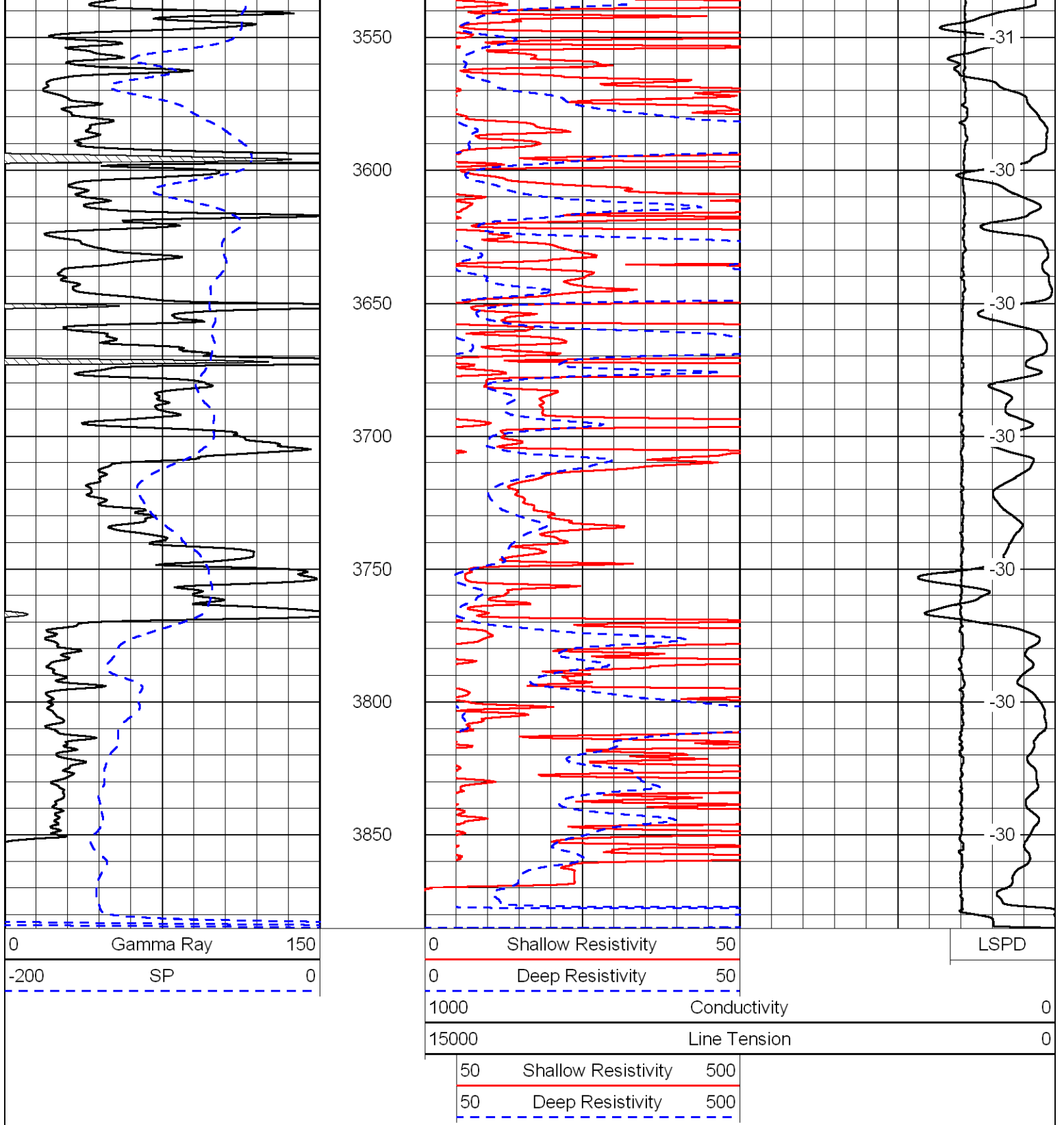






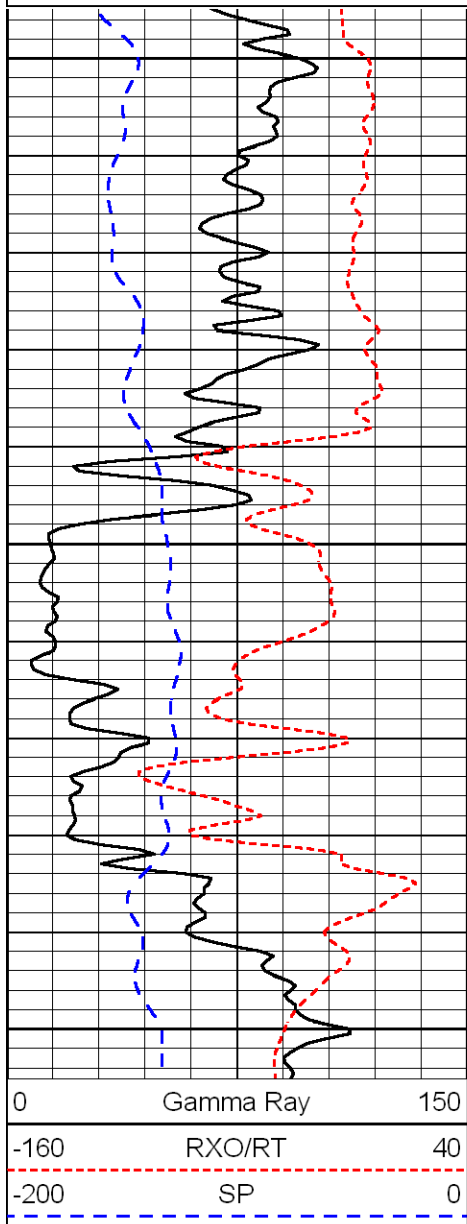
3000
3050
3100
3150
3200
3250
3300
3350
3400
3450
3500

-79
-78
-31
-31
-31
-31
-31
-31
-31
-31
-31
-31



Database File: hbhd.db
 Dataset Pathname: dil/hbstk2
 Presentation Format: dil
 Dataset Creation: Sat Oct 08 20:49:40 2011
 Charted by: Depth in Feet scaled 1:240

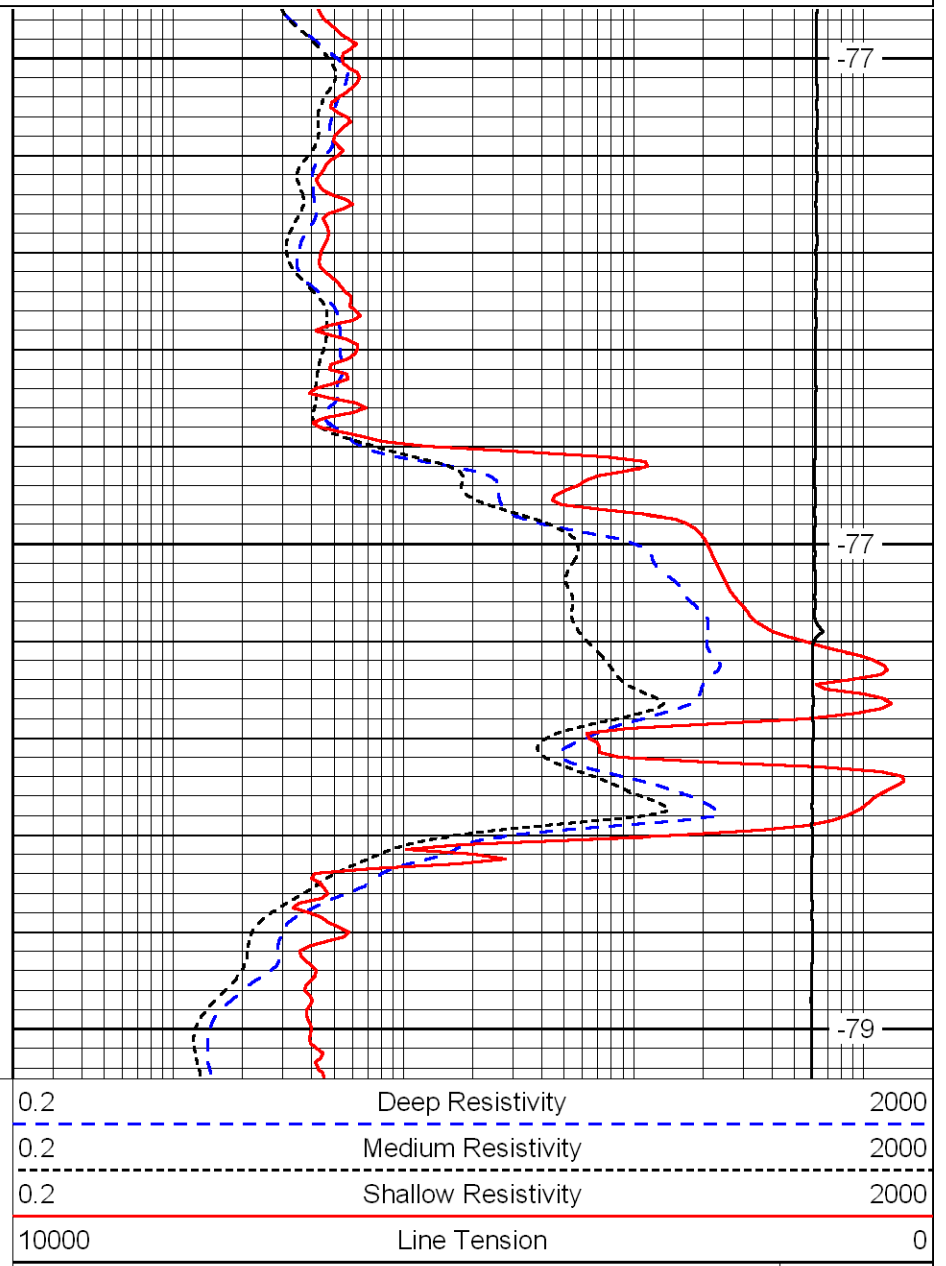
0	Gamma Ray	150	0.2	Deep Resistivity	2000
-160	RXO/RT	40	0.2	Medium Resistivity	2000
-200	SP	0	0.2	Shallow Resistivity	2000
			10000	Line Tension	0
					LSPD



1600

1650

1700



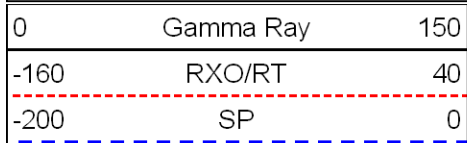
-77

-77

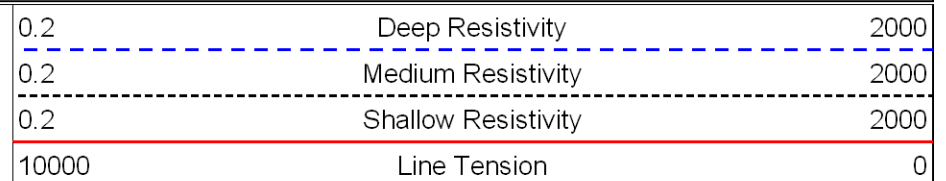
-79

LSPD

Database File: hbhd.db
 Dataset Pathname: dil/hbstk2
 Presentation Format: dil
 Dataset Creation: Sat Oct 08 20:49:40 2011
 Charted by: Depth in Feet scaled 1:240

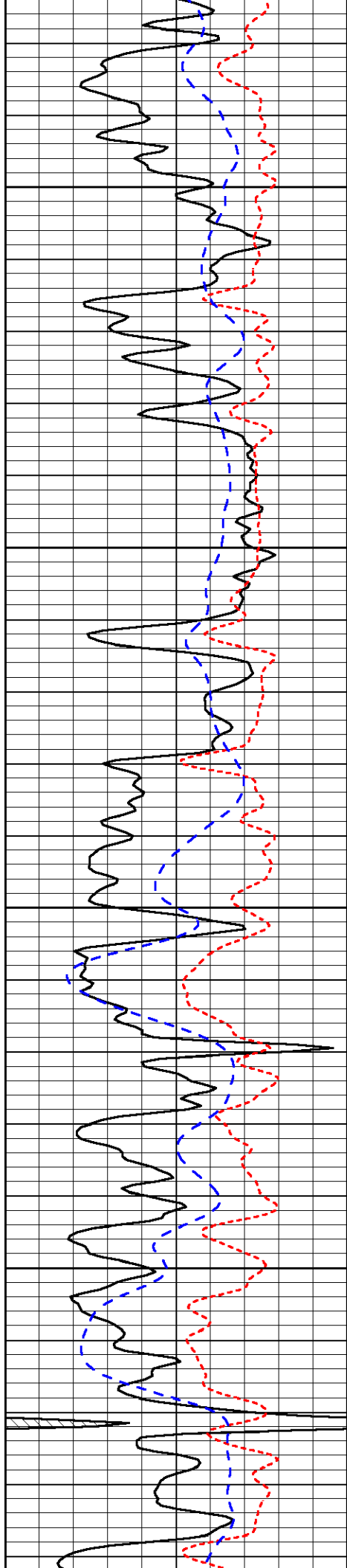


3100



-31

LSPD

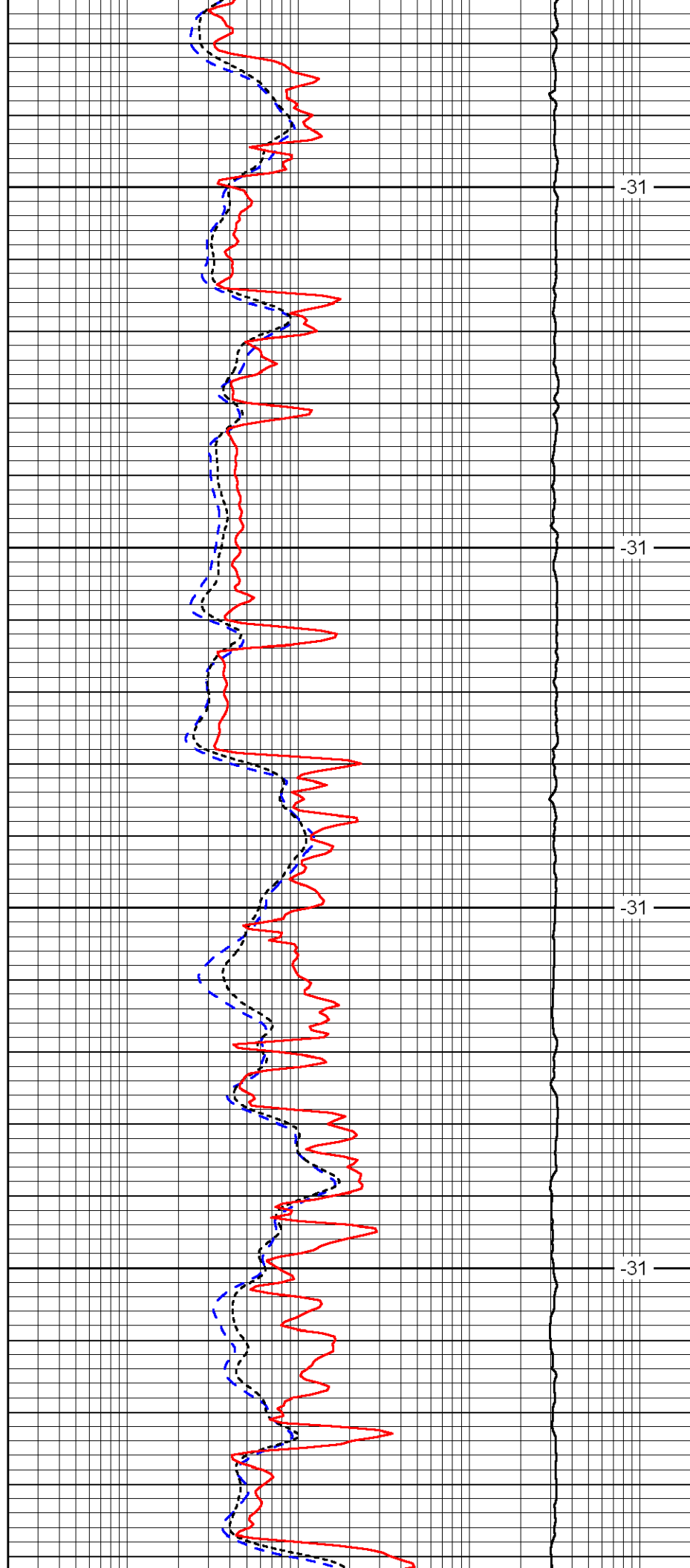


3150

3200

3250

3300

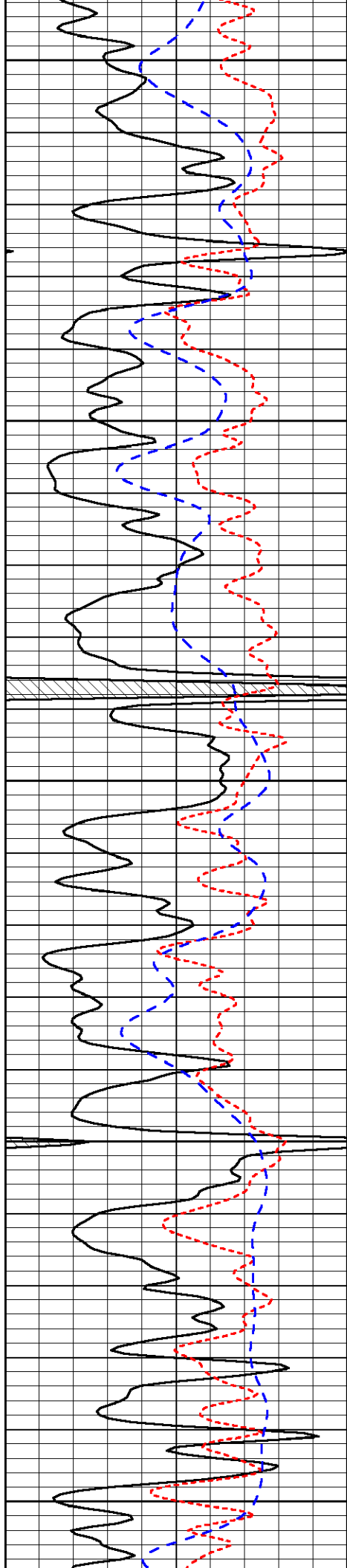


-31

-31

-31

-31



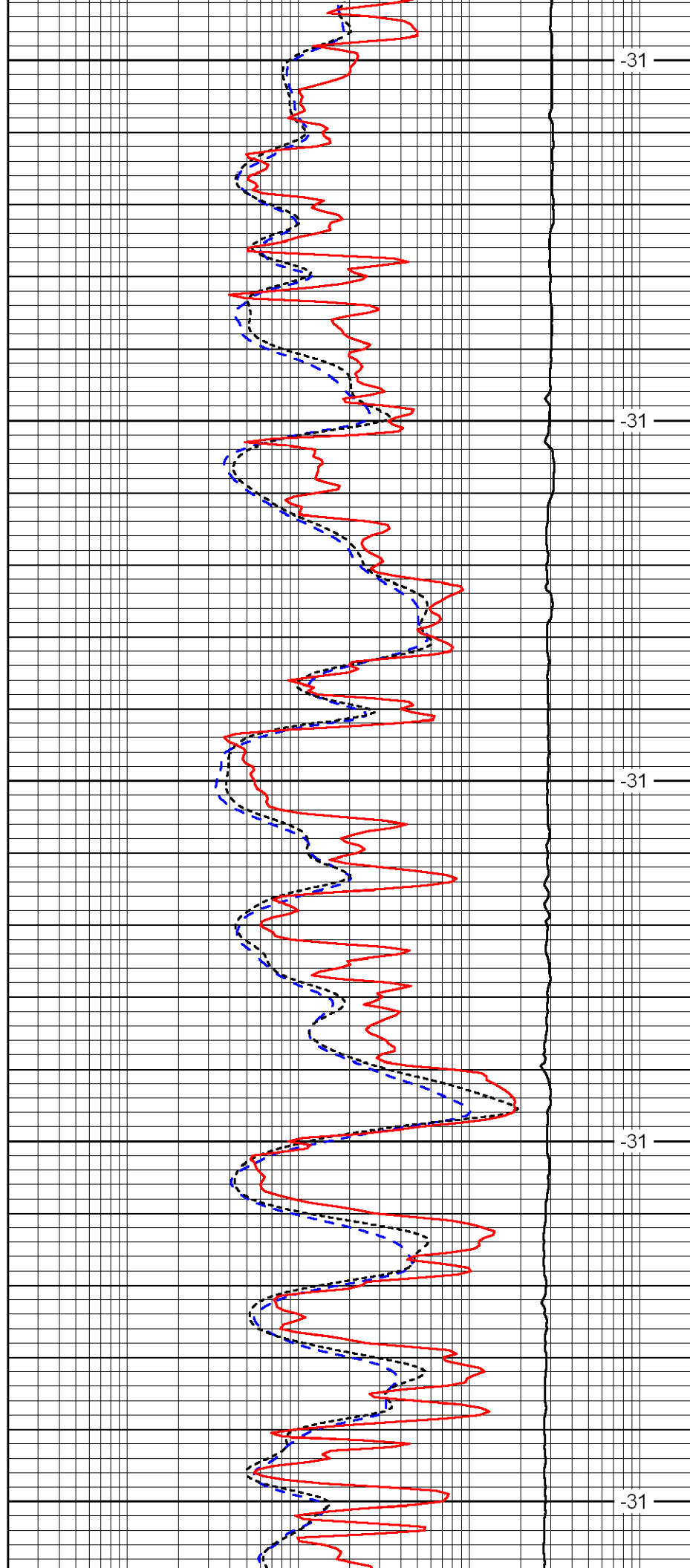
3350

3400

3450

3500

3550



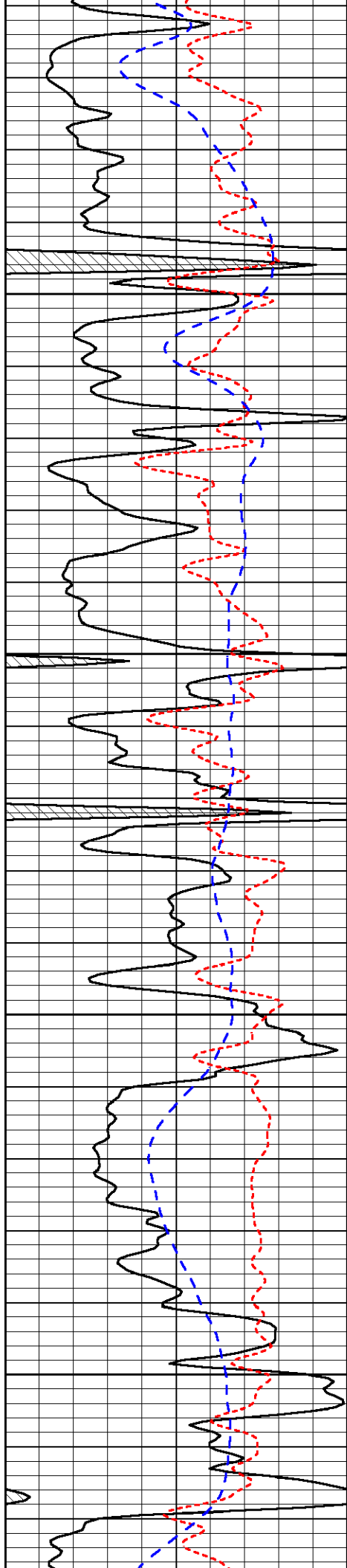
-31

-31

-31

-31

-31

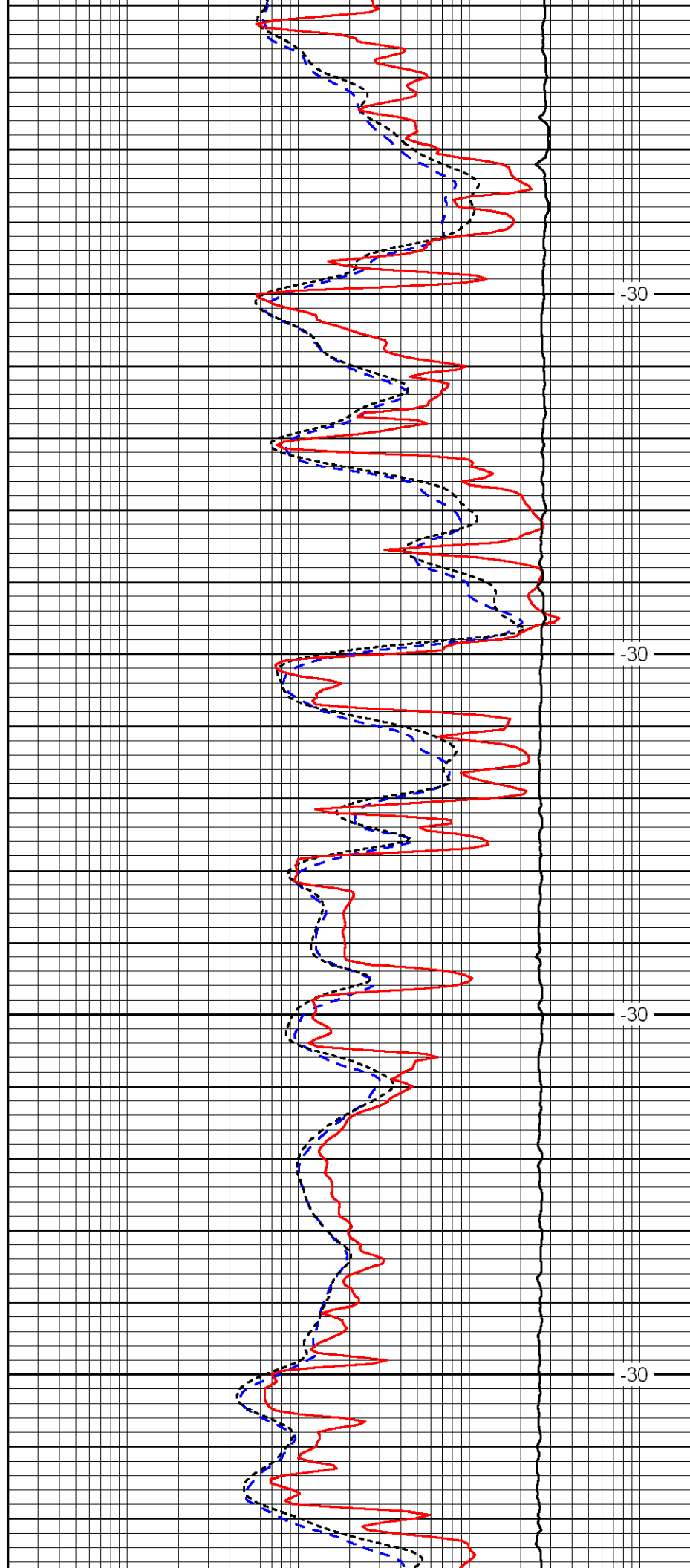


3600

3650

3700

3750

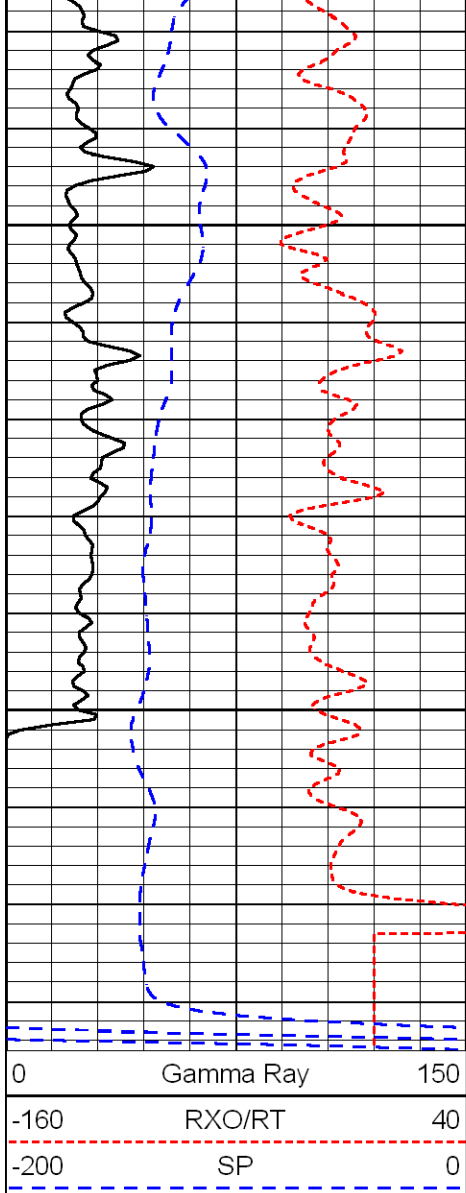


-30

-30

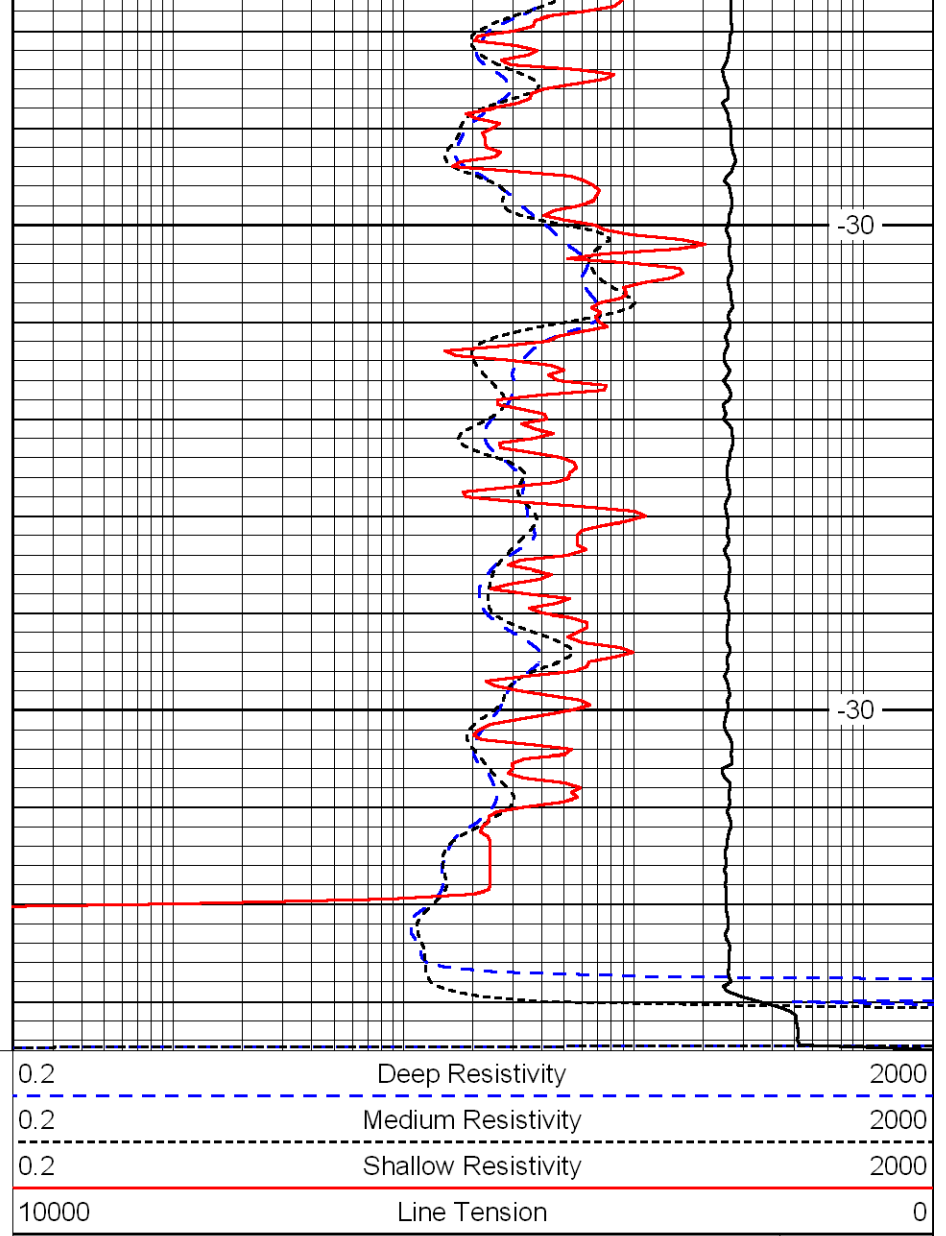
-30

-30



3800

3850



-30

-30

LSPD