



**DIGITAL LOG** (785) 625-3858

**Microresistivity  
Log**

API No. 15-039-21,141-00-00	Company <b>Great Plains Energy, Inc.</b>	Well <b>Hanchera No. 1-16</b>	Field <b>Wildcat</b>	County <b>Decatur</b>	State <b>Kansas</b>	Location <b>400' FNL &amp; 890' FWL</b>	Other Services CNL/CDL DIL
Permanent Datum Log Measured From Drilling Measured From	Ground Level Kelly Bushing From Kelly Bushing	Elevation 2576 5 Ft. Above Perm. Datum	Sec: 16 Twp: 1S Rge: 27W				

Date	9/9/2011
Run Number	One
Depth Driller	3634
Depth Logger	3635
Bottom Logged Interval	3634
Top Log Interval	2900
Casing Driller	8.625 @ 260
Casing Logger	259
Bit Size	7.875
Type Fluid in Hole	Chemical
Salinity, ppm CL	1200
Density / Viscosity	9.0   51
pH / Fluid Loss	11.0   6.4
Source of Sample	Flowline
Rm @ Meas. Temp	.67 @ 71
Rmf @ Meas. Temp	.50 @ 71
Rmc @ Meas. Temp	.90 @ 71
Source of Rmf / Rmc	Charts
Rm @ BHT	.42 @ 112
Operating Rig Time	4 Hours
Max Rec. Temp. F	112
Equipment Number	10
Location	Hays
Recorded By	J. Long
Witnessed By	Rich Bell

<<< Fold Here >>>

All interpretations are opinions based on inferences from electrical or other measurements and we cannot and do not guarantee the accuracy or correctness of any interpretation, and we shall not, except in the case of gross or willful negligence on our part, be liable or responsible for any loss, costs, damages, or expenses incurred or sustained by anyone resulting from any interpretation made by any of our officers, agents or employees. These interpretations are also subject to our general terms and conditions set out in our current Price Schedule.

**Comments**

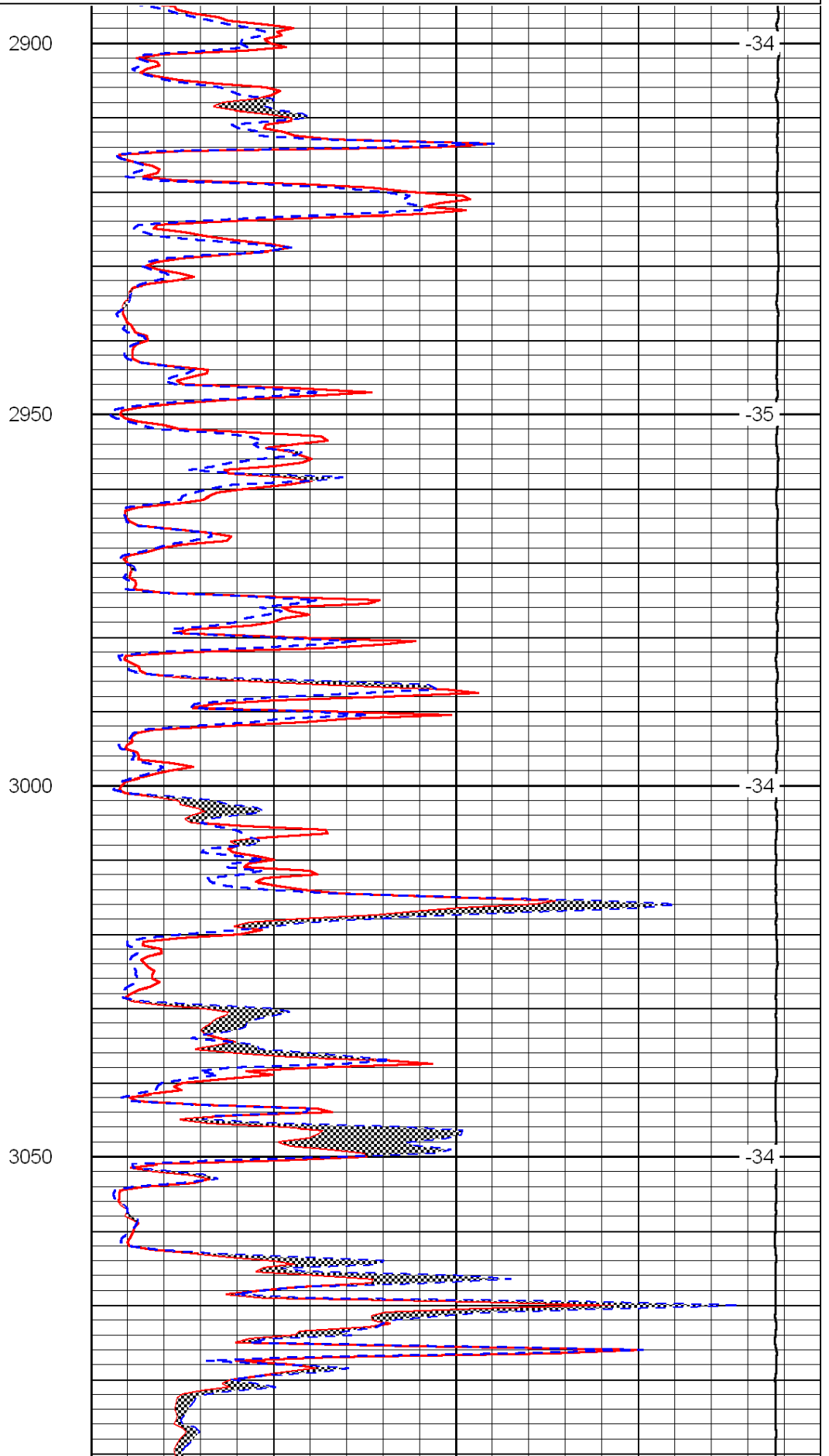
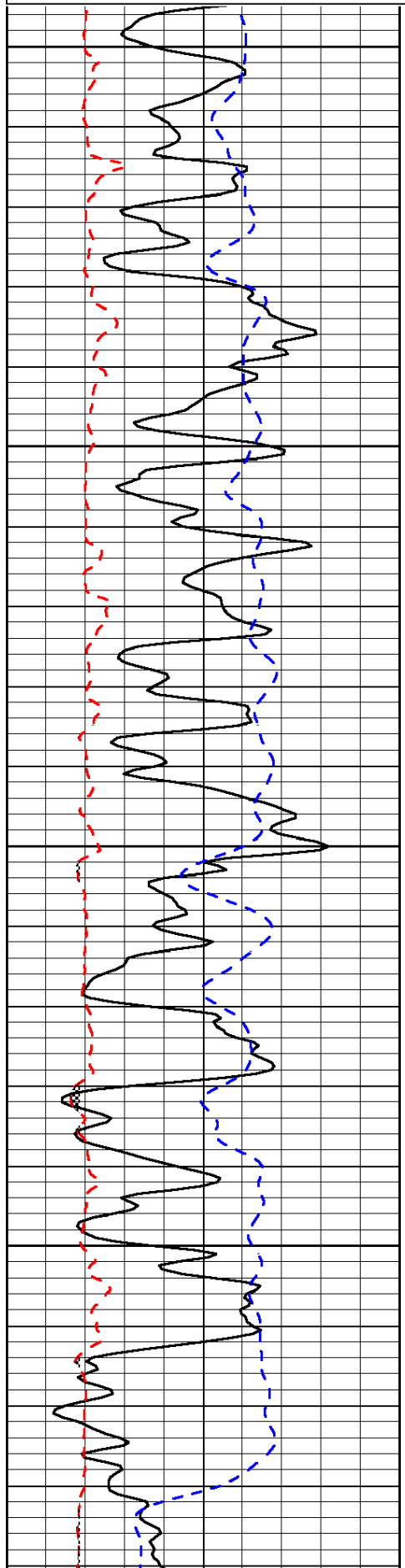
Thank you for using Log-Tech, Inc.  
(785) 625-3858

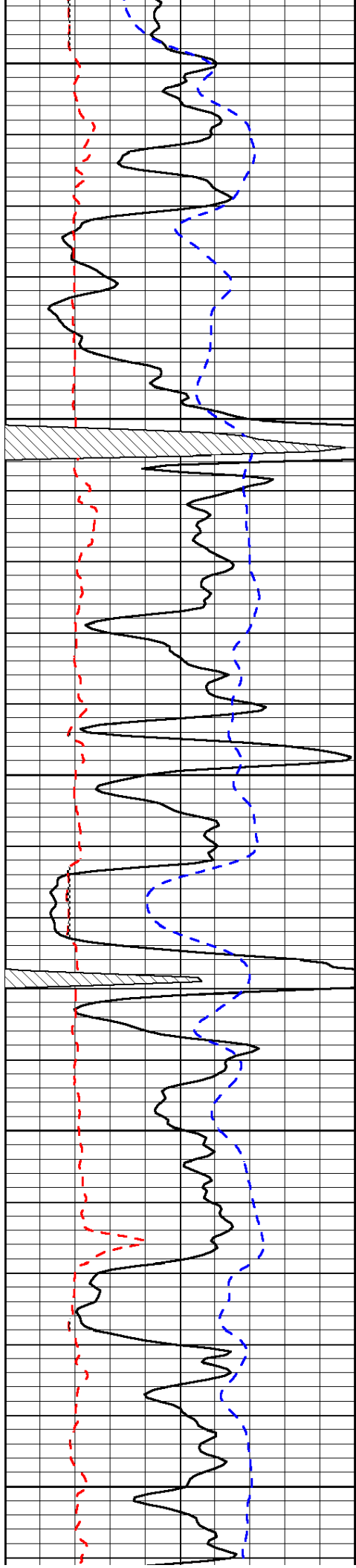
Oberlin, 8 East to Kinona Road (County Road 495), 10 North to 10N Road, 1 1/4 East, South Into

0	Gamma Ray	150
6	Micro Log Caliper (GAPI)	16
-200	SP (mV)	0

0	Micro Inverse 1 X 1	40
0	Micro Normal 2"	40
15000	Line Weight	0

LSPD





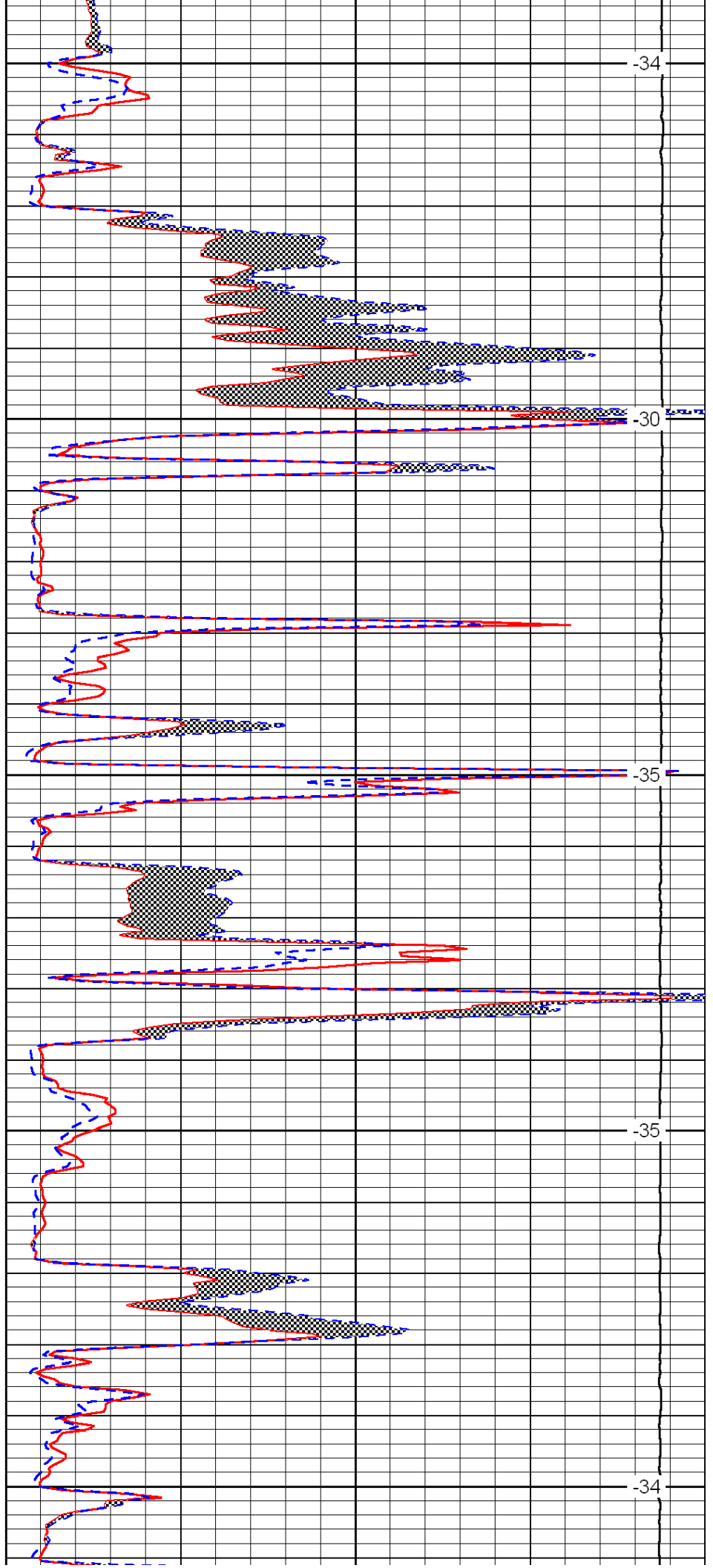
3100

3150

3200

3250

3300



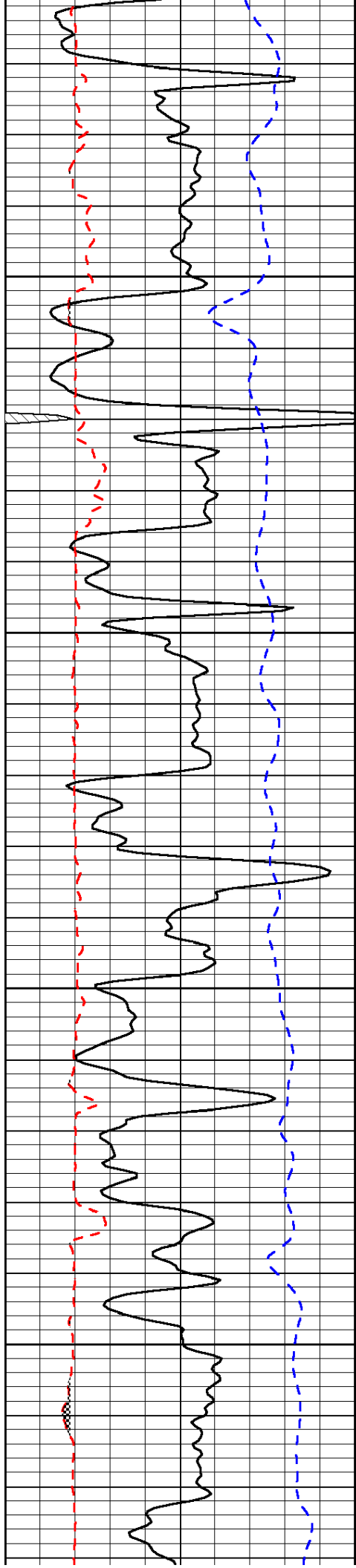
-34

-30

-35

-35

-34

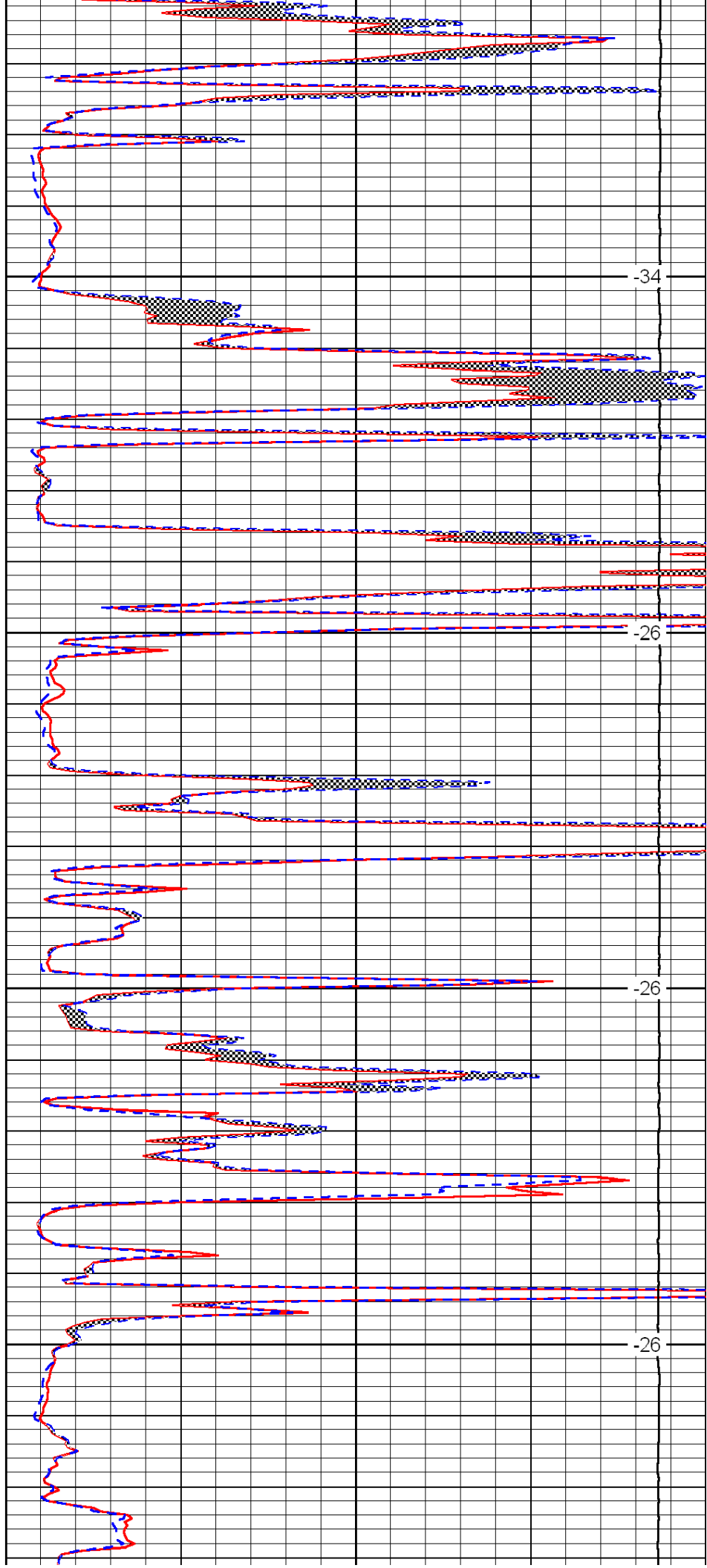


3350

3400

3450

3500

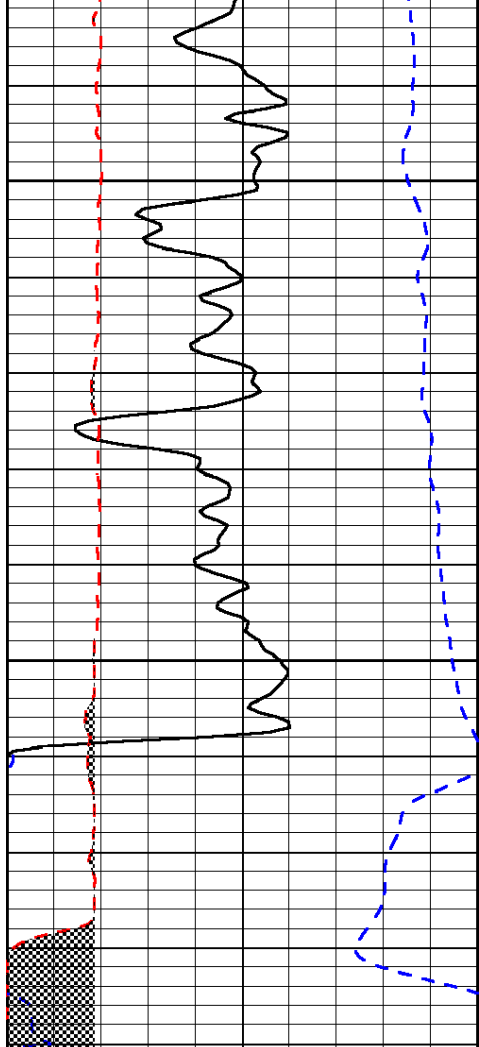


-34

-26

-26

-26



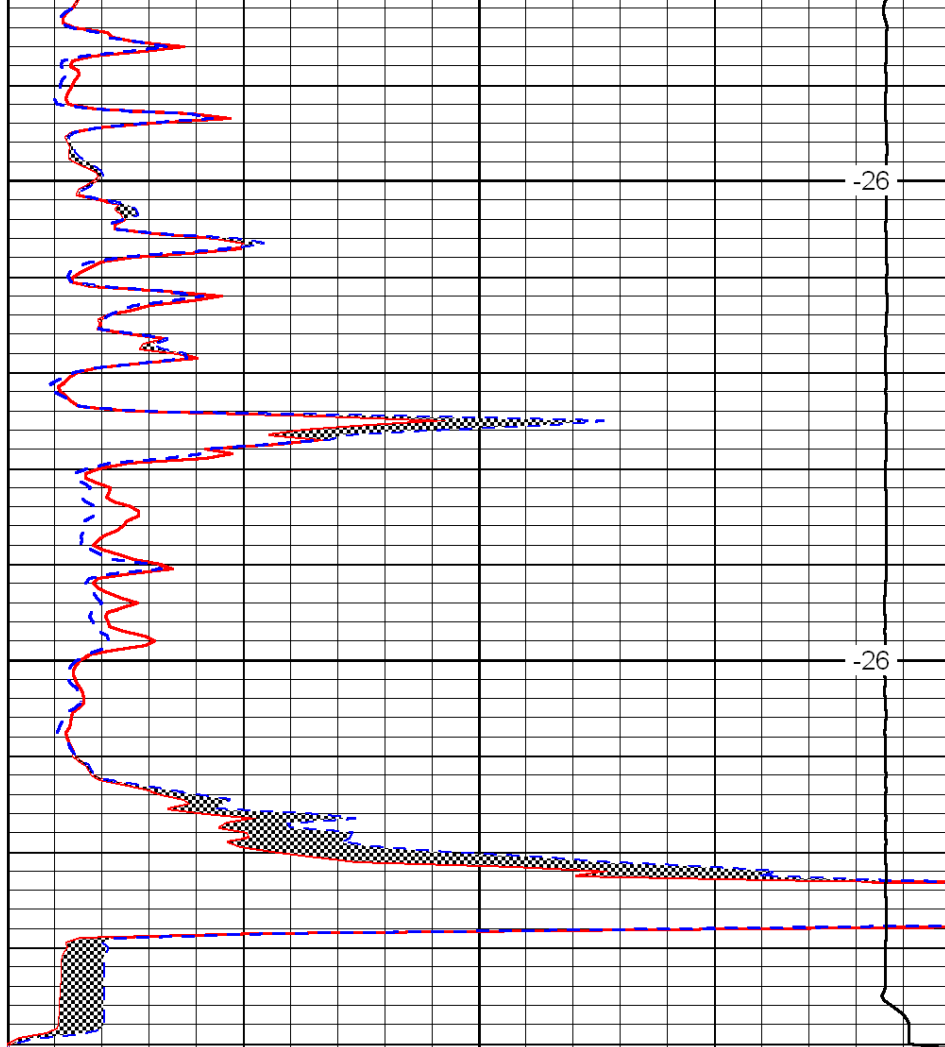
0	Gamma Ray	150
6	Micro Log Caliper (GAPI)	16
-200	SP (mV)	0

3550

3600

-26

-26



0	Micro Inverse 1 X 1	40
0	Micro Normal 2''	40
15000	Line Weight	0

LSPD