



DIGITAL LOG (785) 625-3858

Dual Induction Log

API No. 15-039-21,141-00-00

Company: Great Plains Energy, Inc.
 Well: Hanchera No. 1-16
 Field: Wildcat
 County: Decatur State: Kansas

Location: 400' FNL & 890' FWL

Sec: 16 Twp: 1S Rge: 27W

Other Services: CNL/CDL MEL

Permanent Datum Ground Level Elevation 2576
 Log Measured From Kelly Bushing 5 Ft. Above Perm. Datum
 Drilling Measured From Kelly Bushing

K.B. 2581
 D.F. 2576
 G.L. 2576

Date	9/9/2011
Run Number	Two
Depth Driller	3634
Depth Logger	3635
Bottom Logged Interval	3634
Top Log Interval	250
Casing Driller	8.625 @ 260
Casing Logger	259
Bit Size	7.875
Type Fluid in Hole	Chemical
Salinity, ppm CL	1200
Density / Viscosity	9.0 51
pH / Fluid Loss	11.0 6.4
Source of Sample	Flowline
Rm @ Meas. Temp	.67 @ 71
Rmf @ Meas. Temp	.50 @ 71
Rmc @ Meas. Temp	.90 @ 71
Source of Rmf / Rmc	Charts
Rm @ BHT	.42 @ 112
Operating Rig Time	4 Hours
Max Rec. Temp. F	112
Equipment Number	10
Location	Hays
Recorded By	J. Long
Witnessed By	Rich Bell

<<< Fold Here >>>

All interpretations are opinions based on inferences from electrical or other measurements and we cannot and do not guarantee the accuracy or correctness of any interpretation, and we shall not, except in the case of gross or willful negligence on our part, be liable or responsible for any loss, costs, damages, or expenses incurred or sustained by anyone resulting from any interpretation made by any of our officers, agents or employees. These interpretations are also subject to our general terms and conditions set out in our current Price Schedule.

Comments

Thank you for using Log-Tech, Inc.
 (785) 625-3858

Oberlin, 8 East to Kinona Road (County Road 495), 10 North to 10N Road, 1 1/4 East, South Into

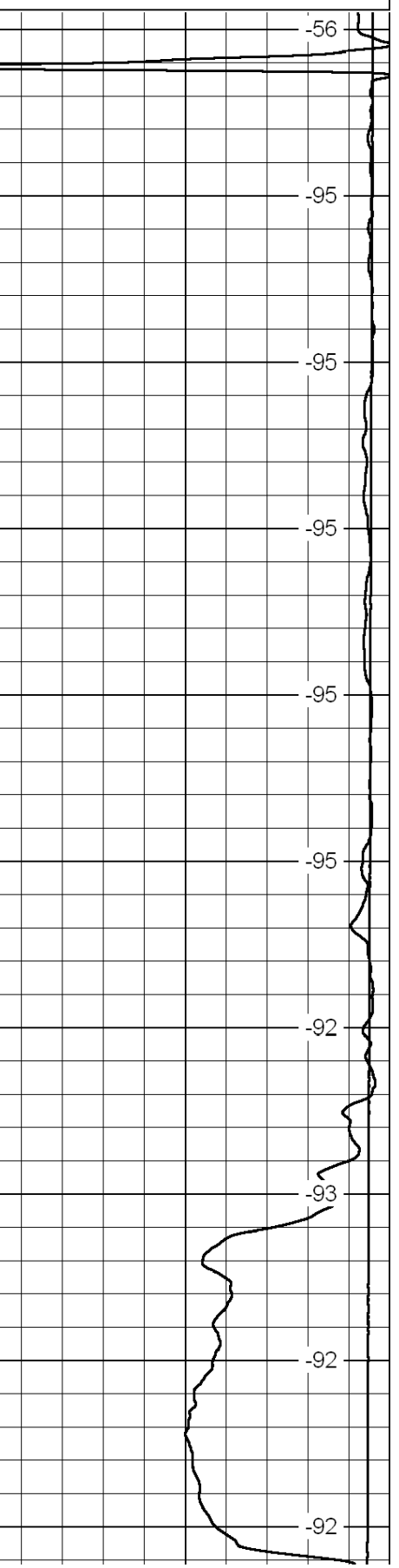
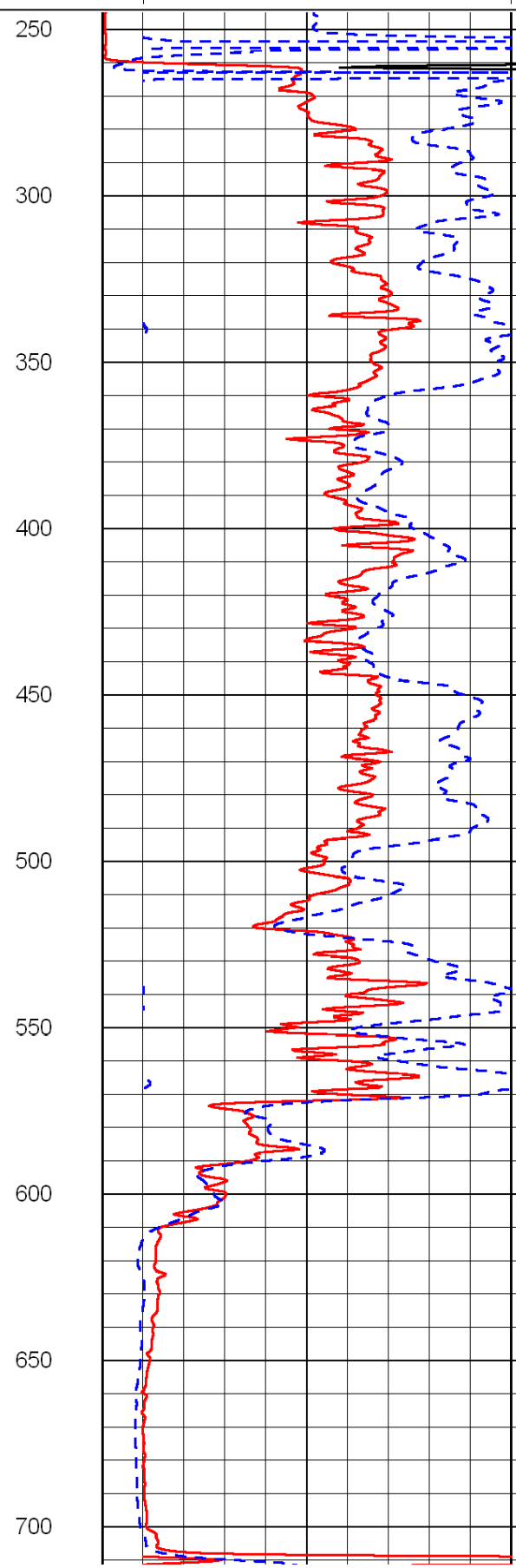
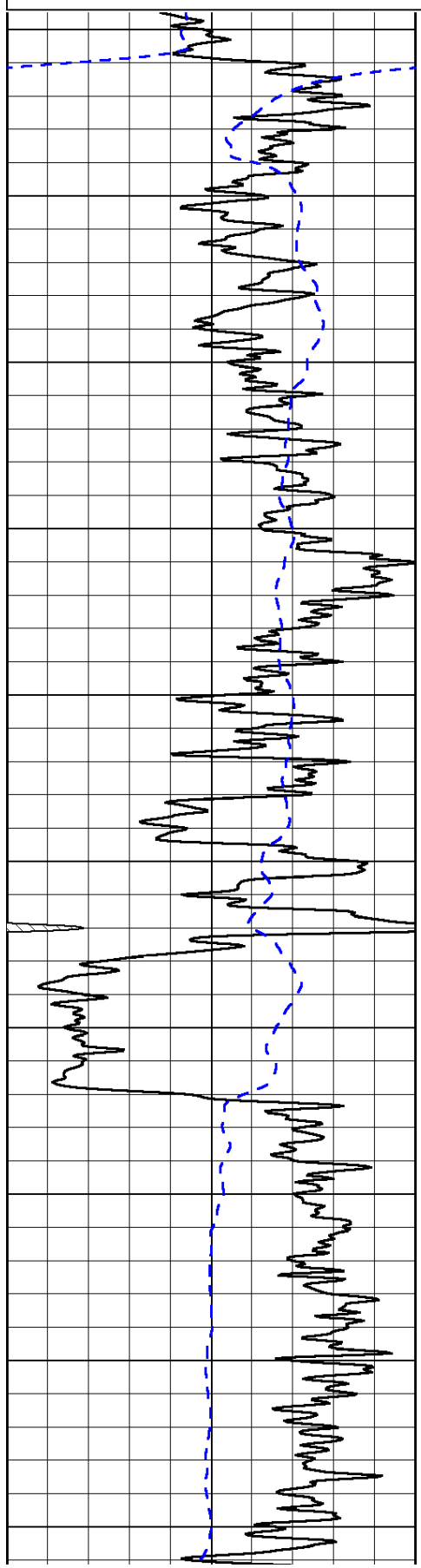
0	Gamma Ray	150
-200	SP (mV)	0

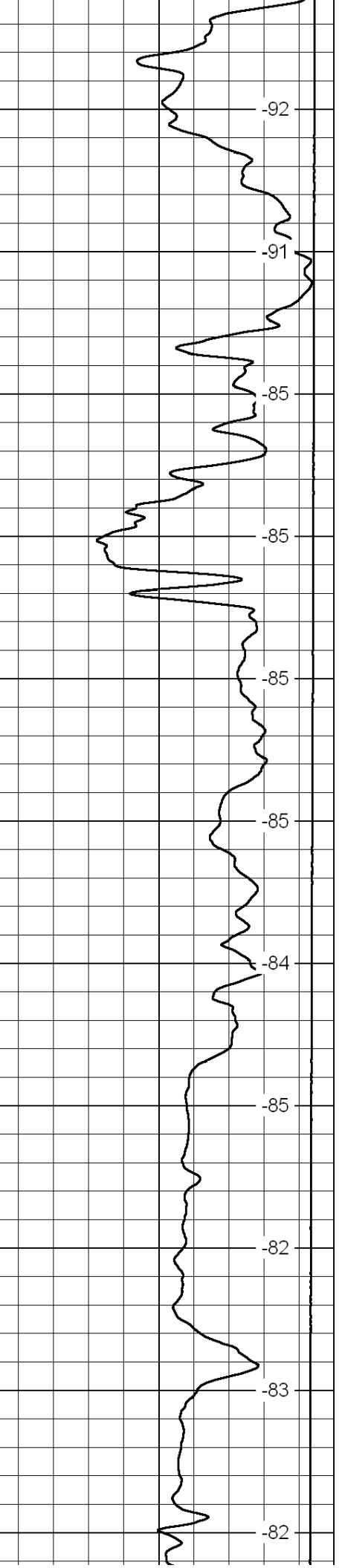
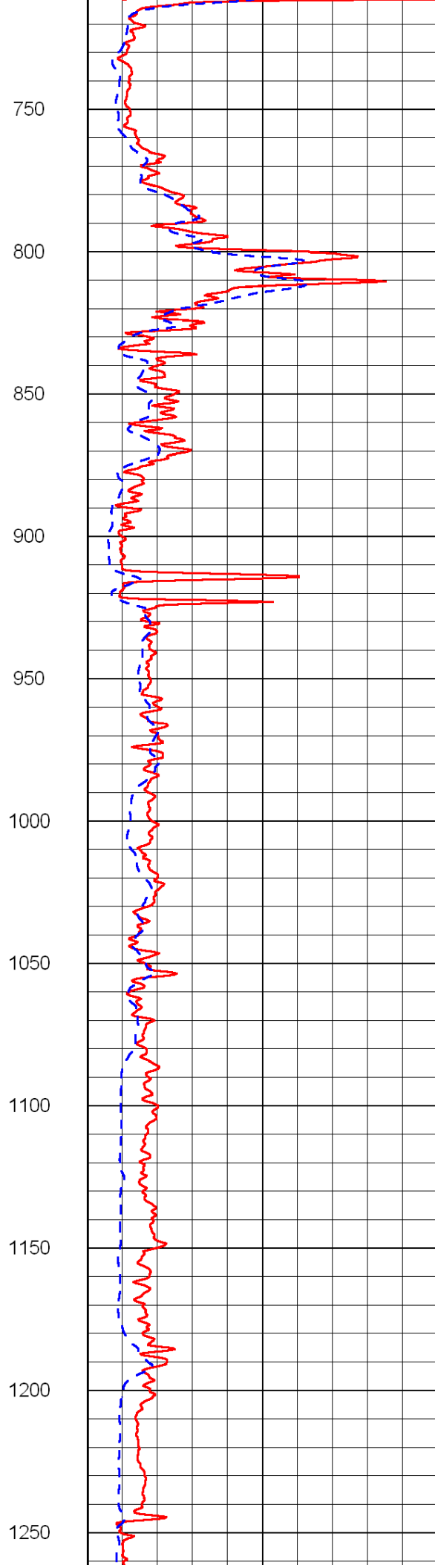
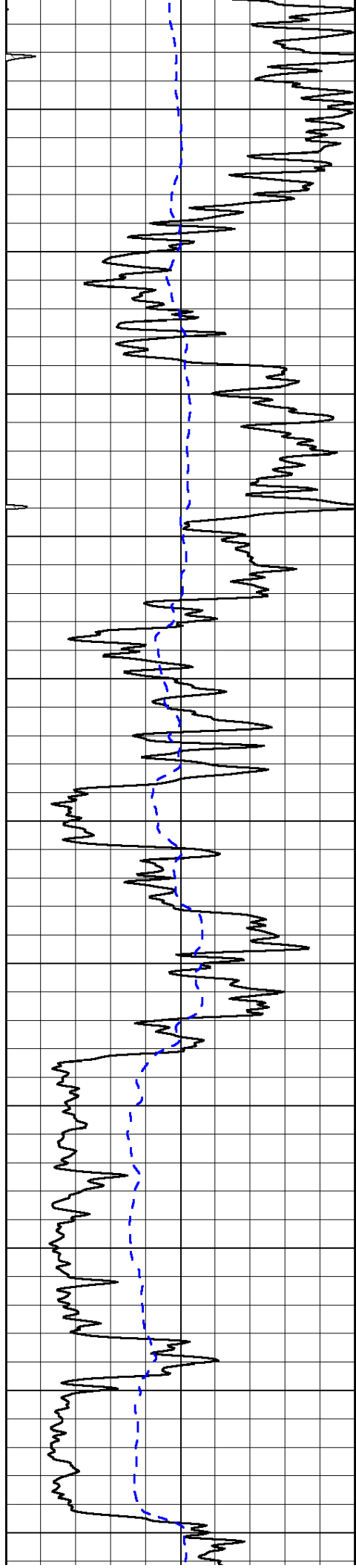
0	Shallow Resistivity	50
0	Deep Resistivity	50

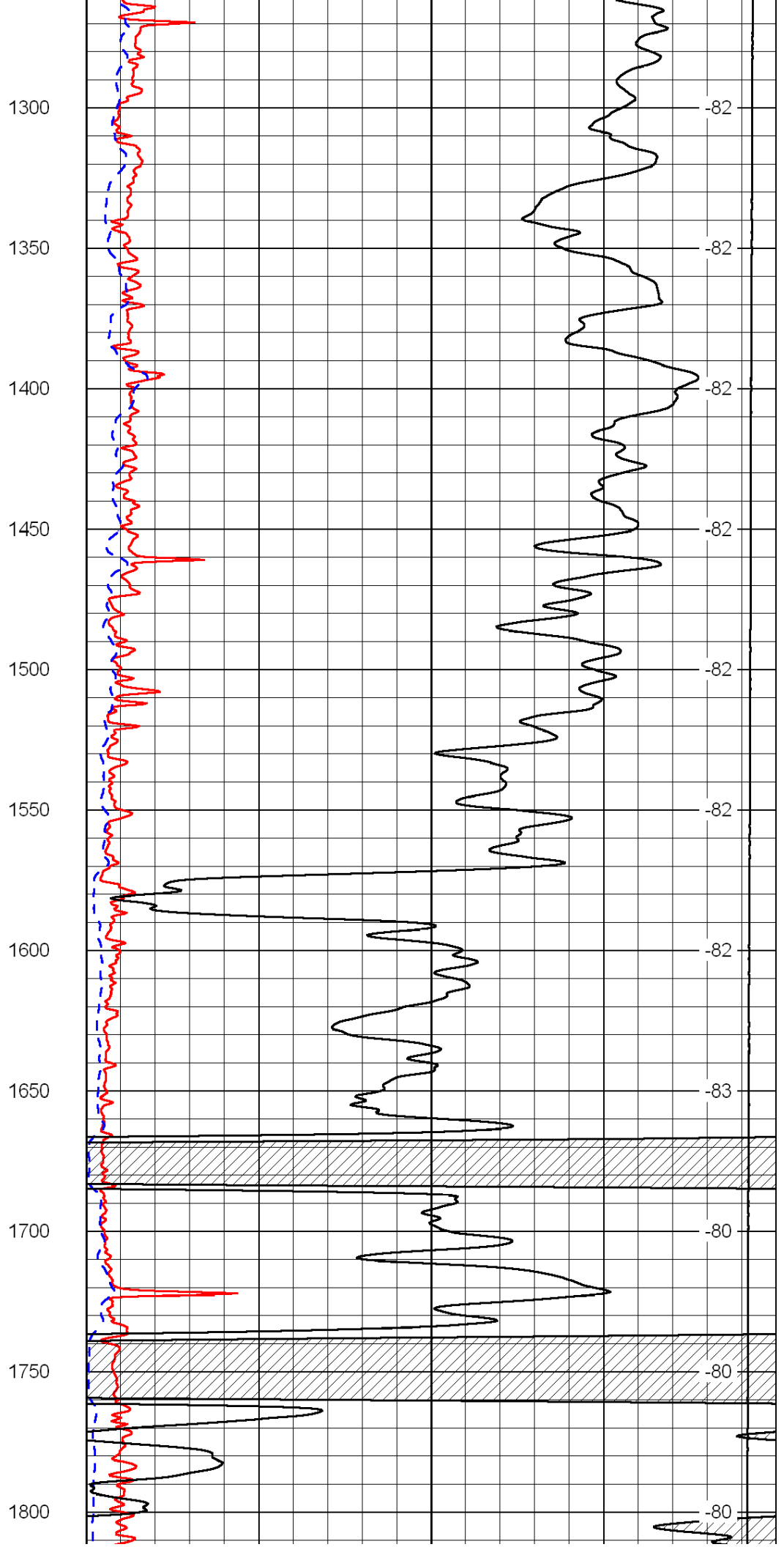
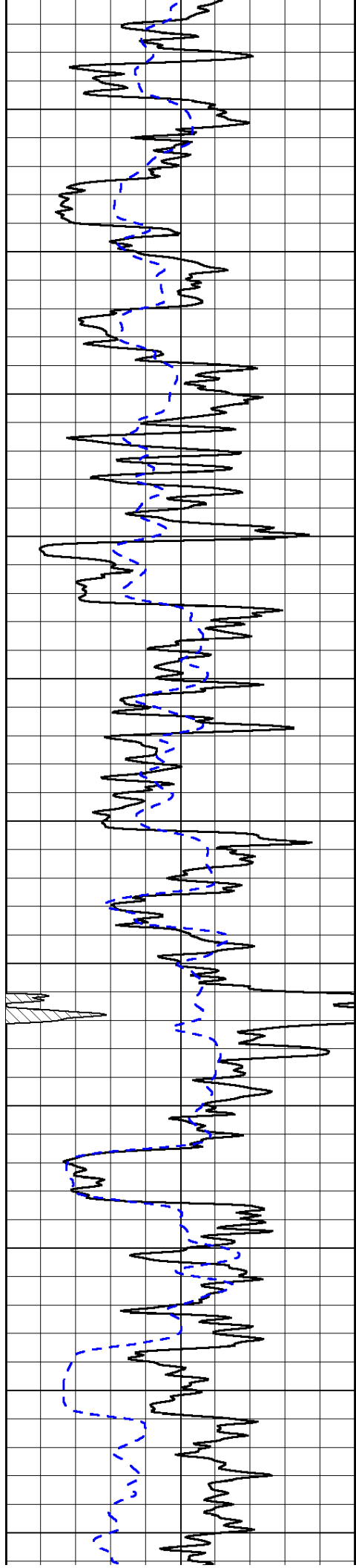
LSPD

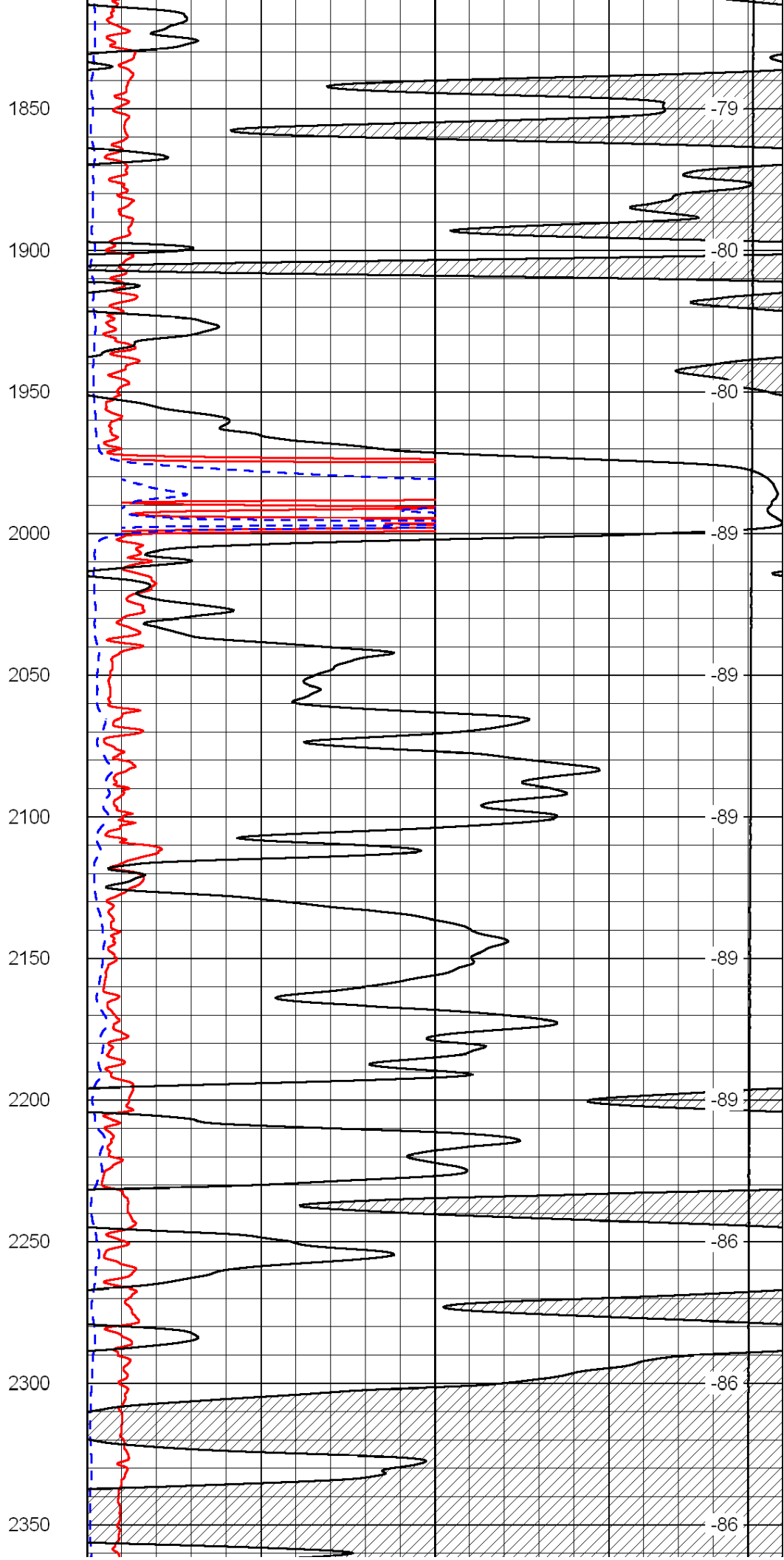
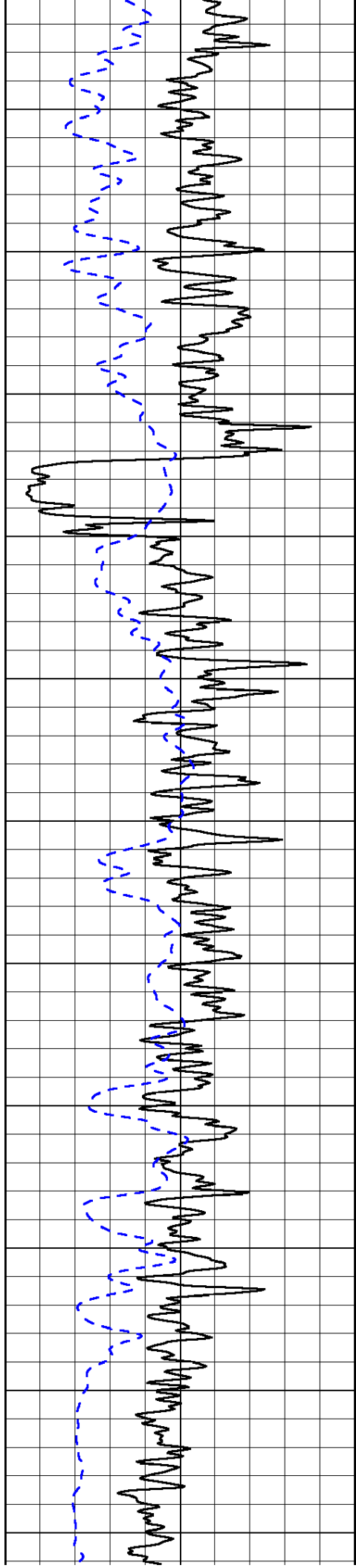
1000	Conductivity	0
15000	Line Tension	0

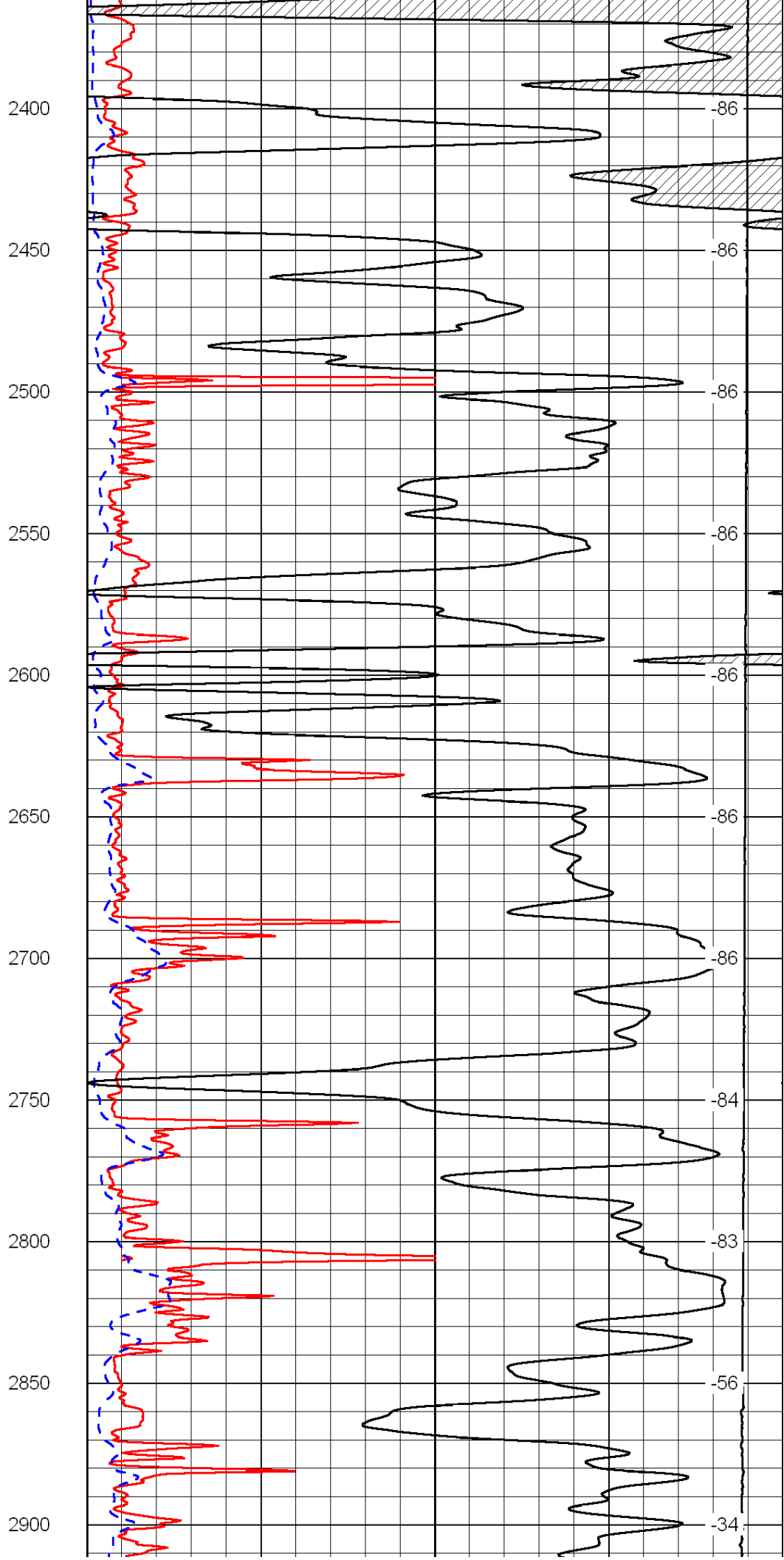
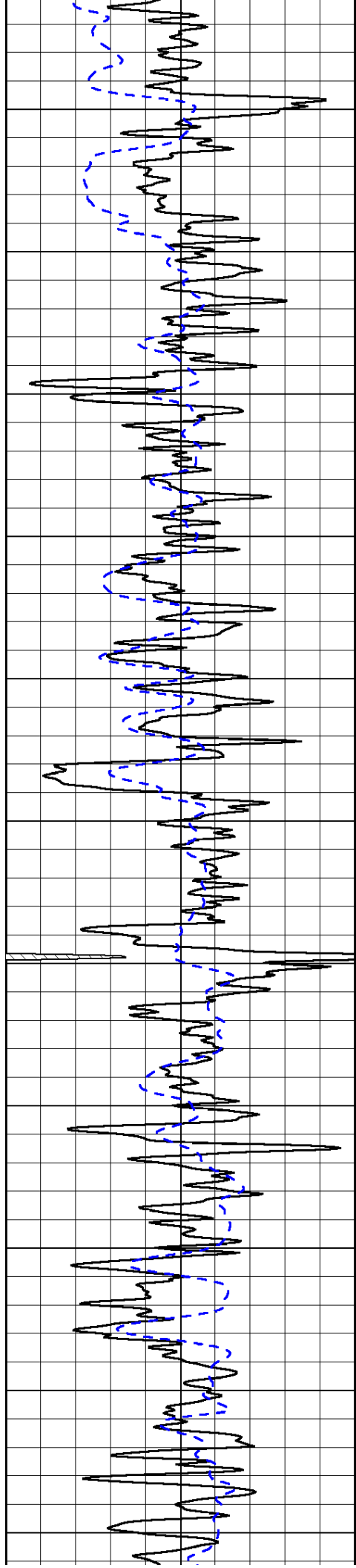
50	Shallow Resistivity	500
50	Deep Resistivity	500

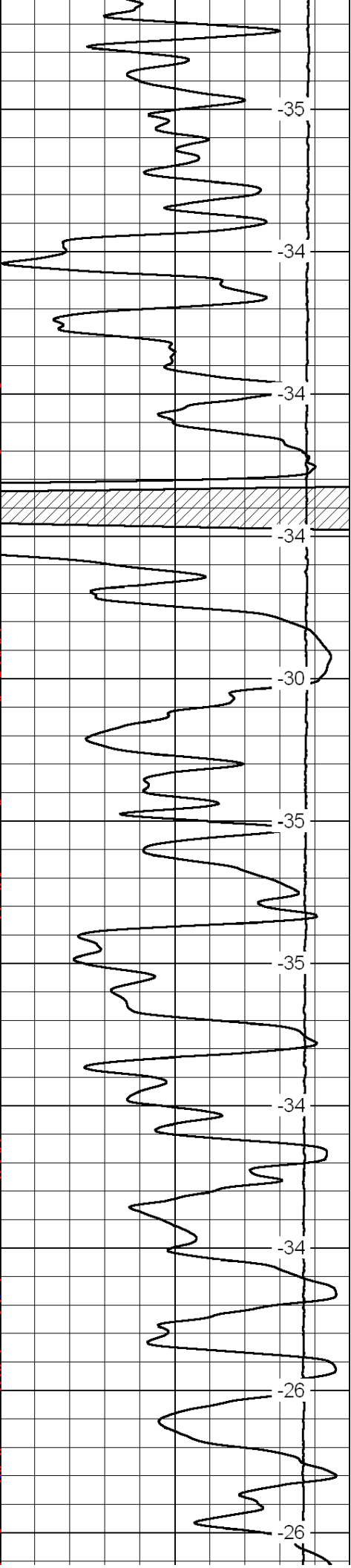
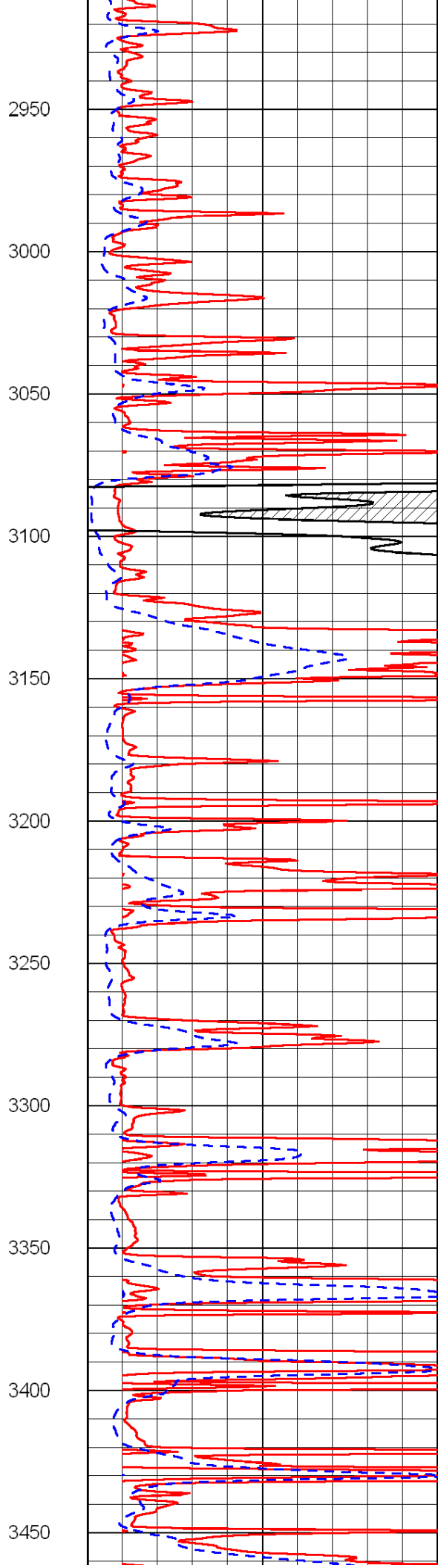
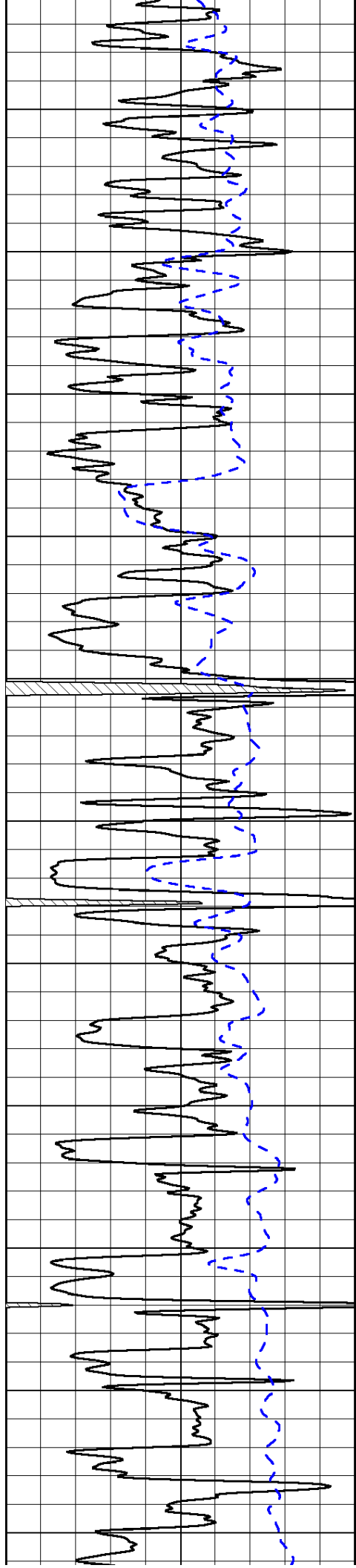


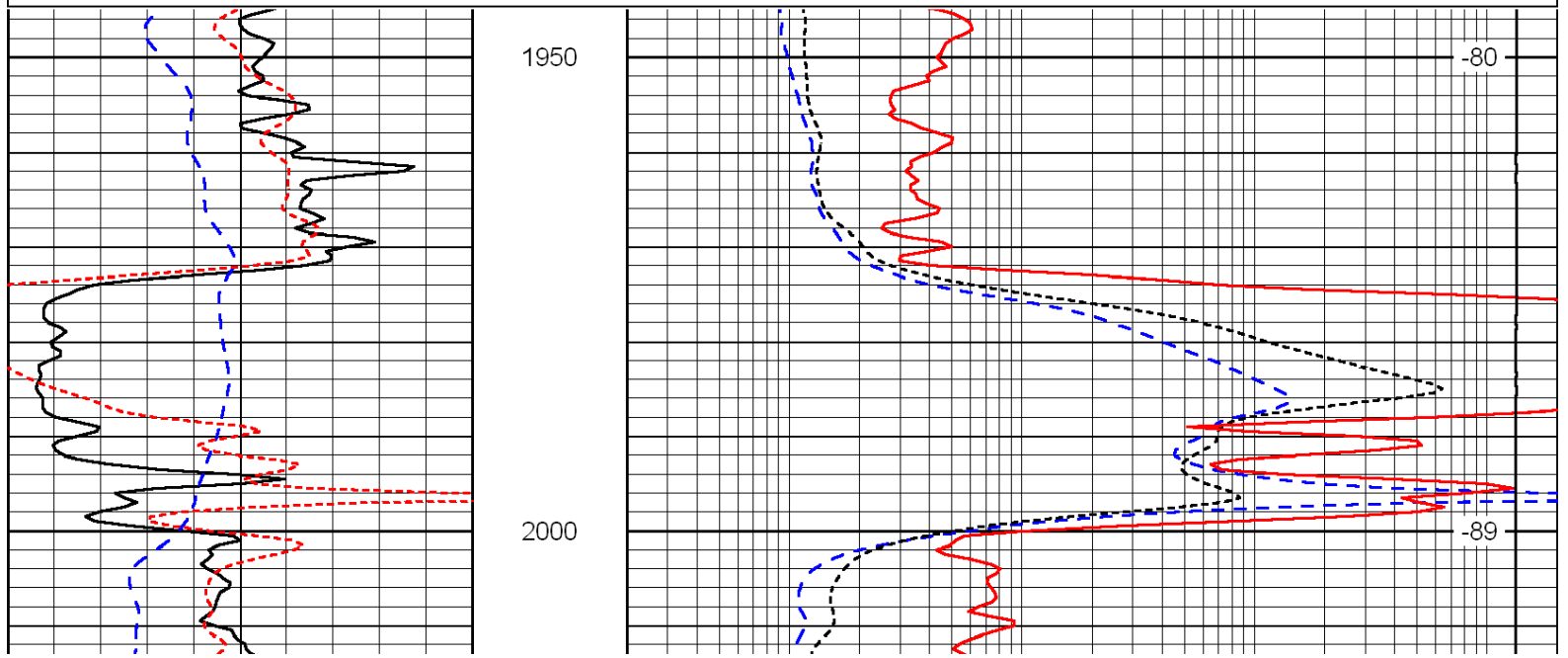
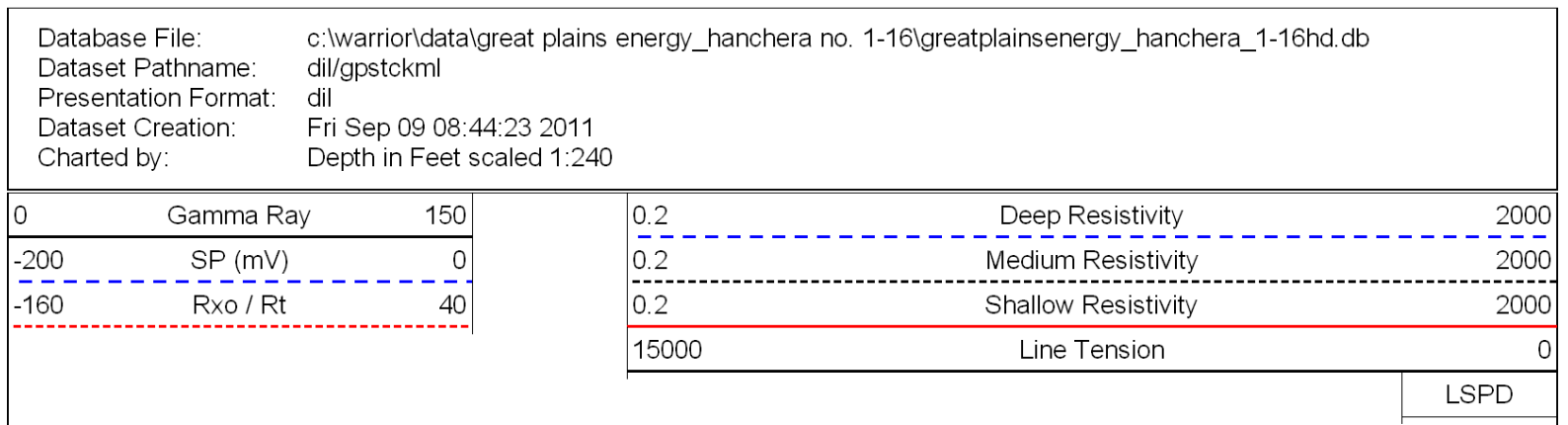
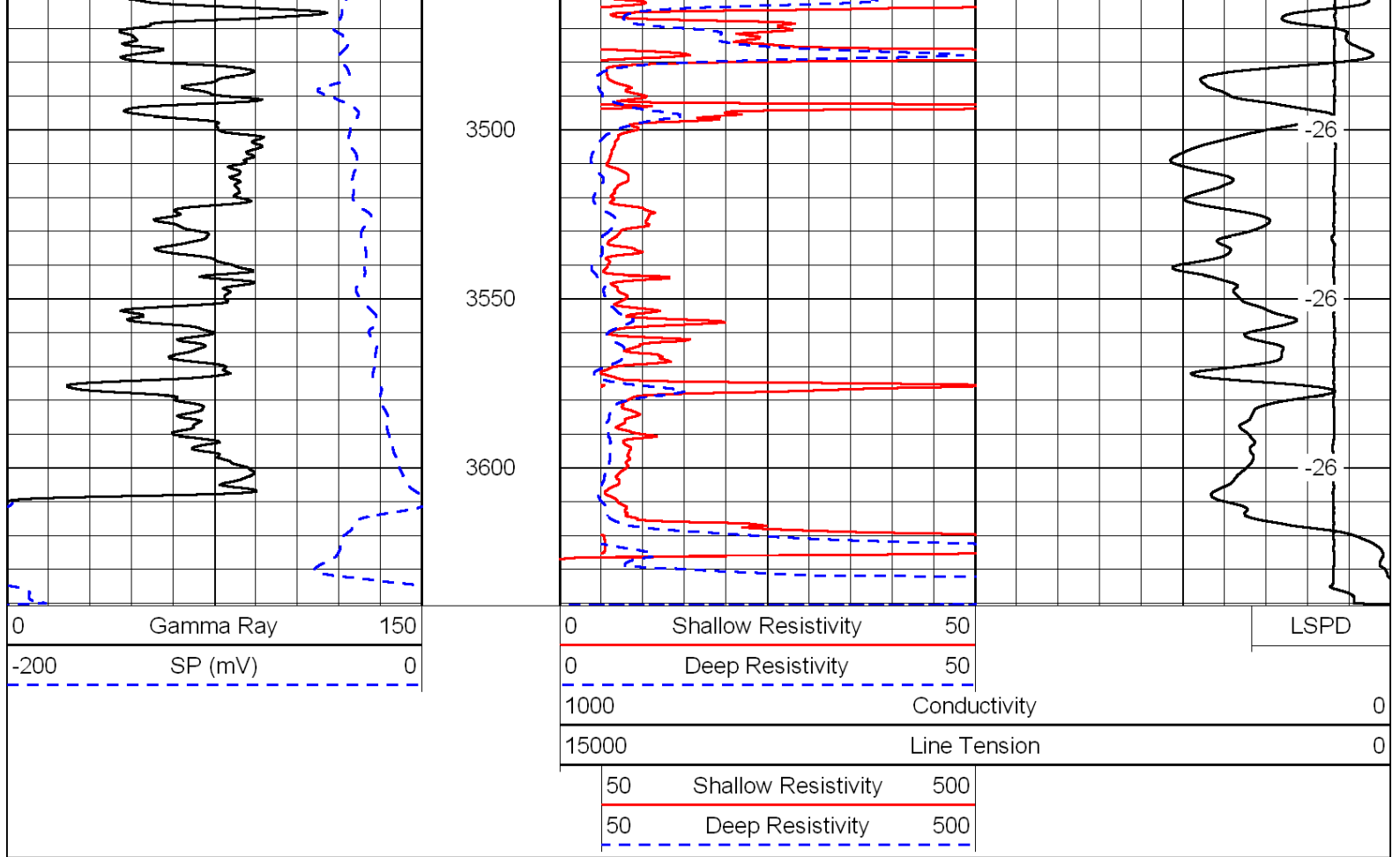


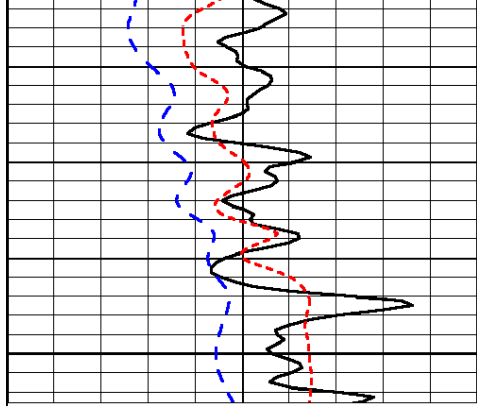






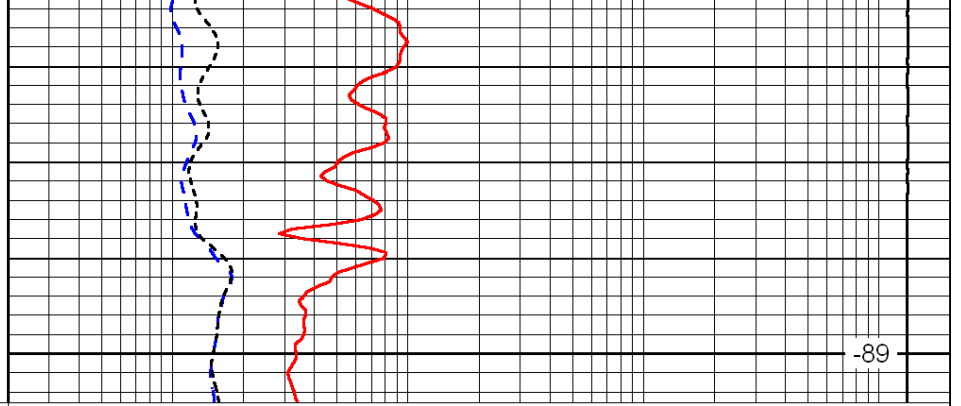






2050

0	Gamma Ray	150
-200	SP (mV)	0
-160	Rxo / Rt	40



-89

0.2	Deep Resistivity	2000
0.2	Medium Resistivity	2000
0.2	Shallow Resistivity	2000
15000	Line Tension	0

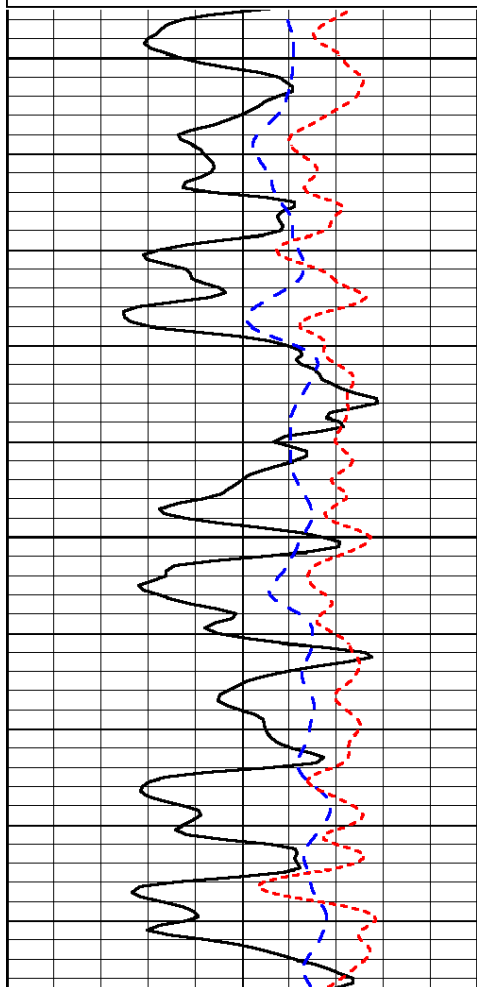
LSPD

Database File: c:\warrior\data\great plains energy_hanchera no. 1-16\greatplainsenergy_hanchera_1-16hd.db
 Dataset Pathname: dil/gpstckml
 Presentation Format: dil
 Dataset Creation: Fri Sep 09 08:44:23 2011
 Charted by: Depth in Feet scaled 1:240

0	Gamma Ray	150
-200	SP (mV)	0
-160	Rxo / Rt	40

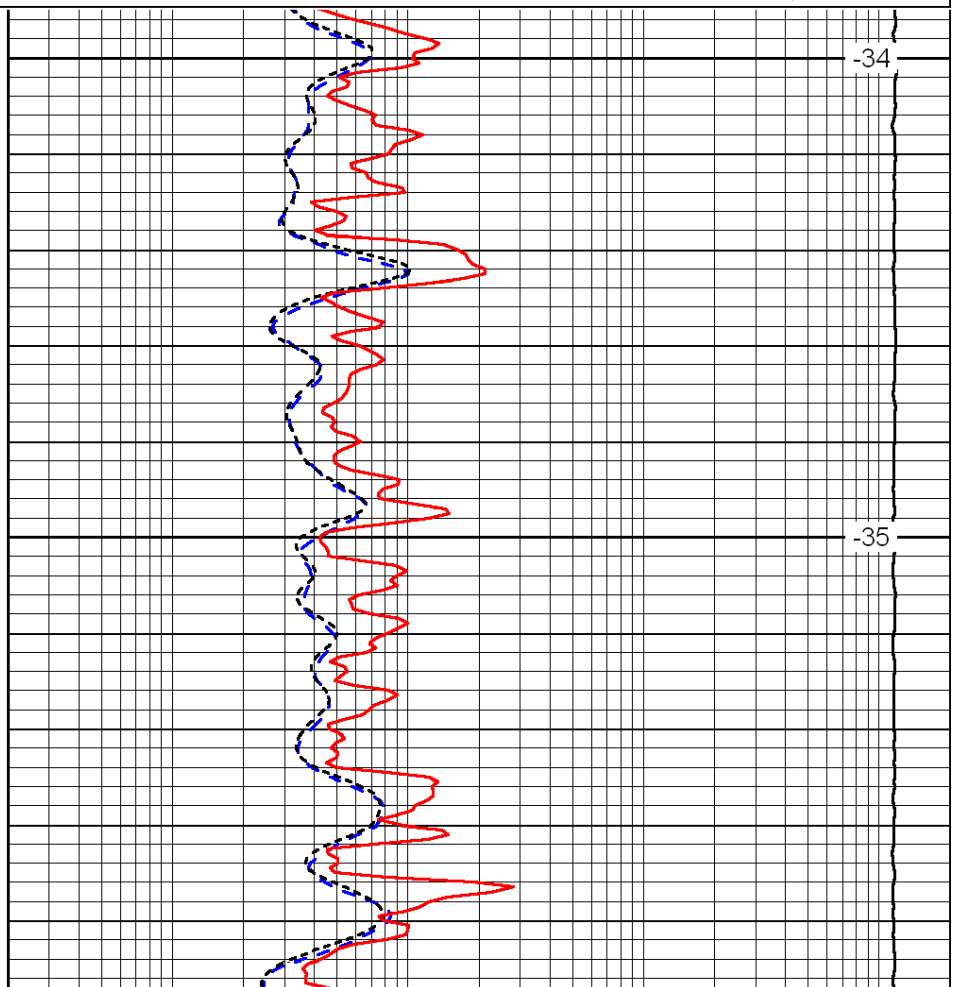
0.2	Deep Resistivity	2000
0.2	Medium Resistivity	2000
0.2	Shallow Resistivity	2000
15000	Line Tension	0

LSPD



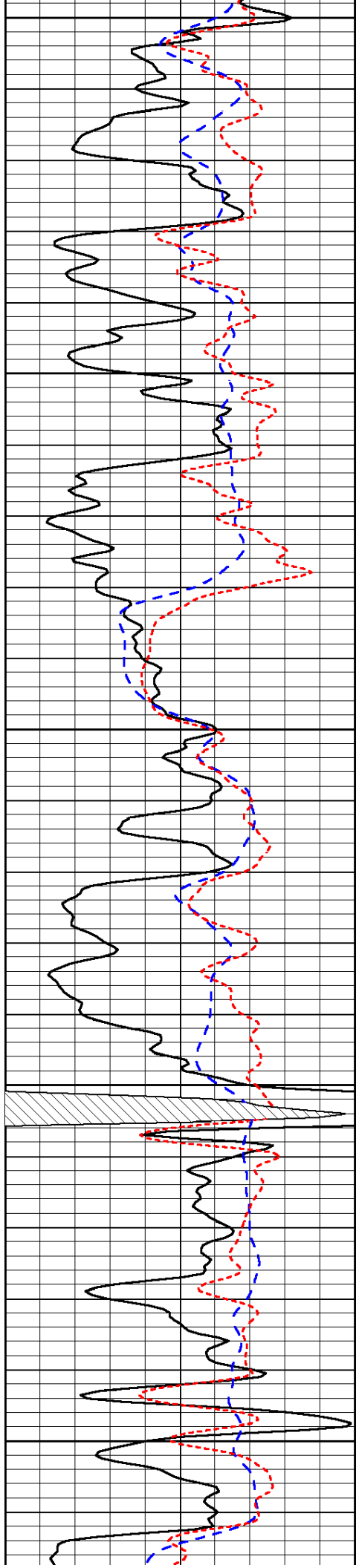
2900

2950



-34

-35



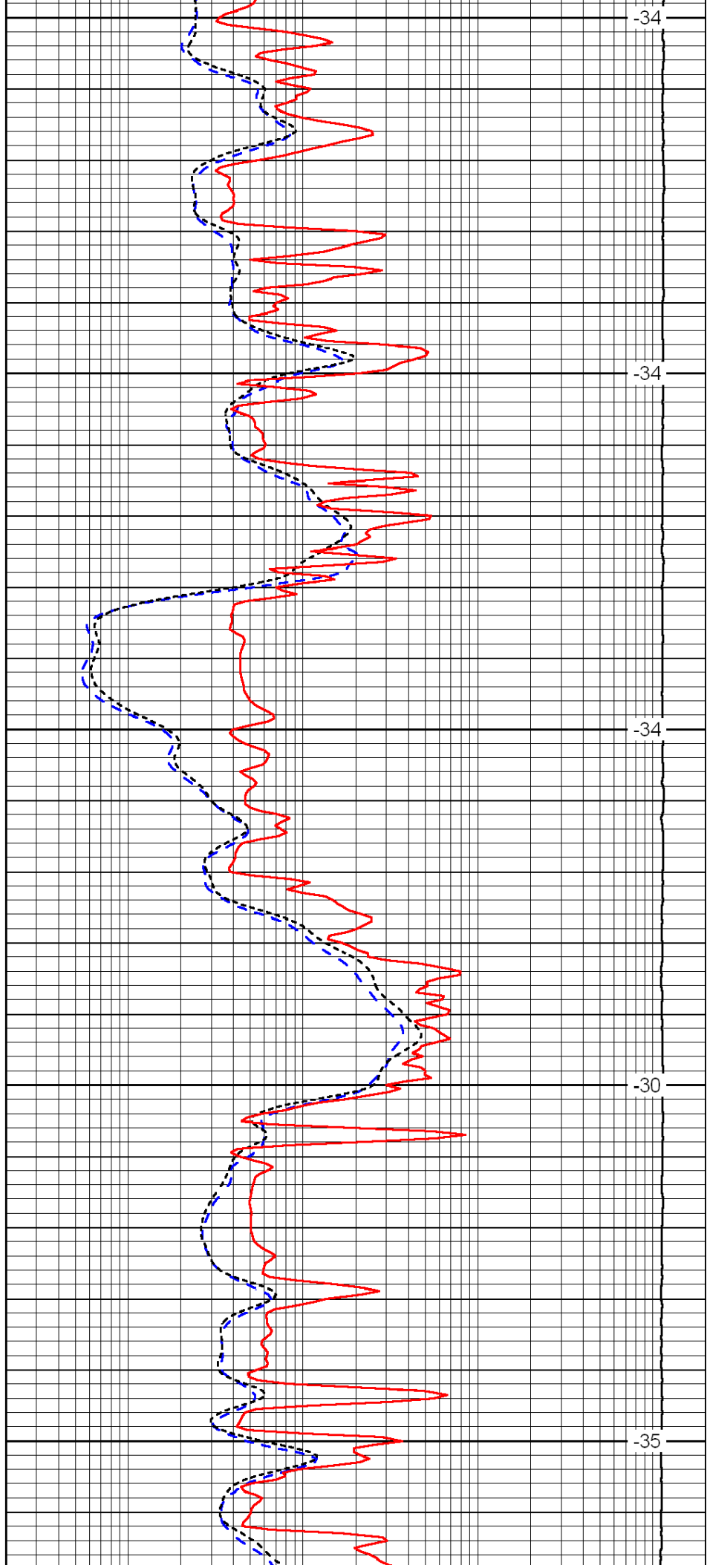
3000

3050

3100

3150

3200



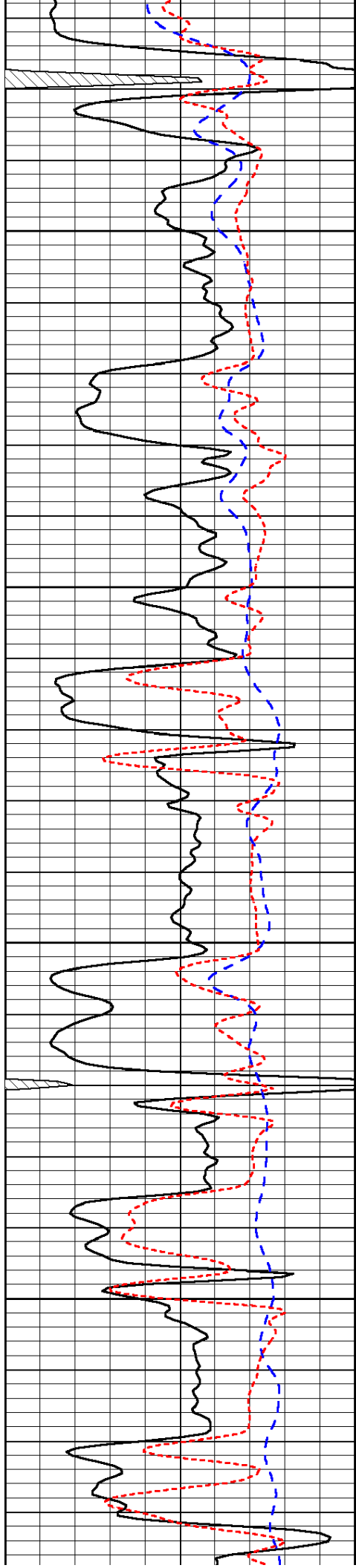
-34

-34

-34

-30

-35

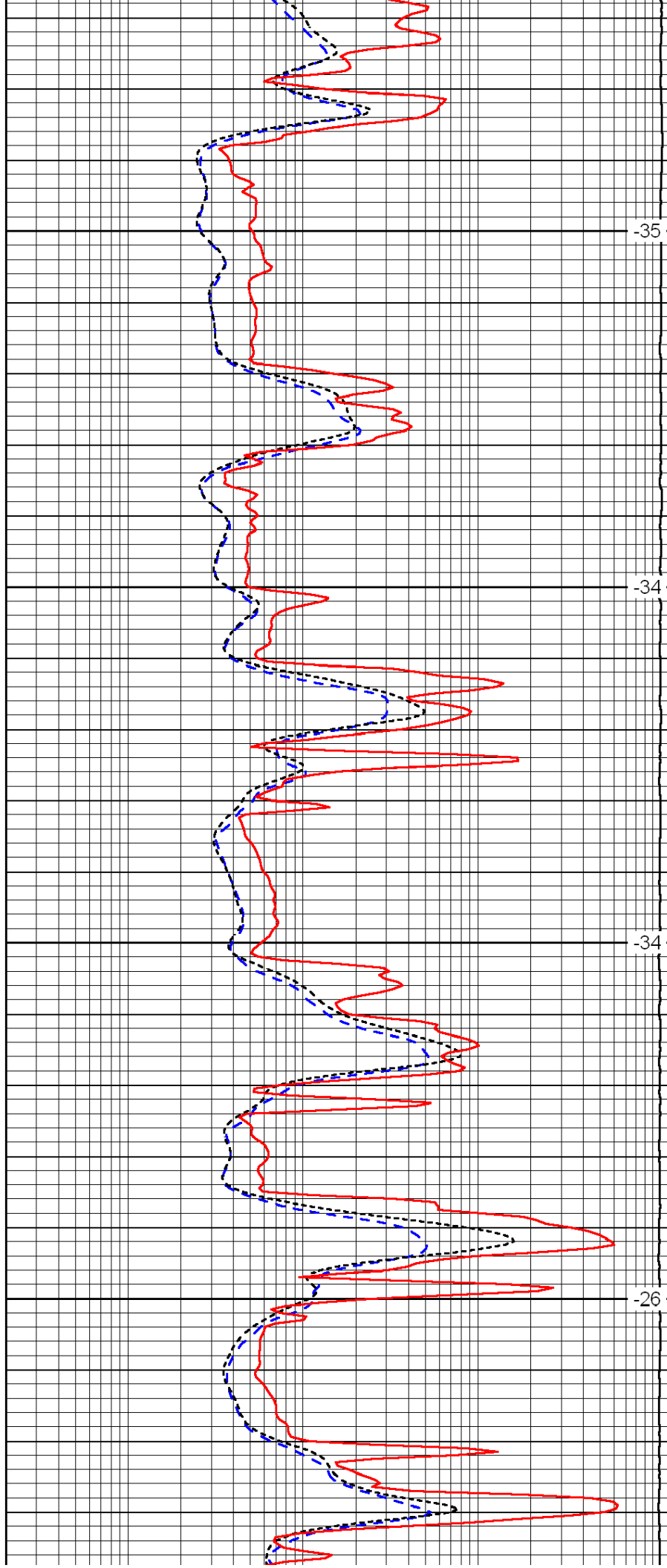


3250

3300

3350

3400

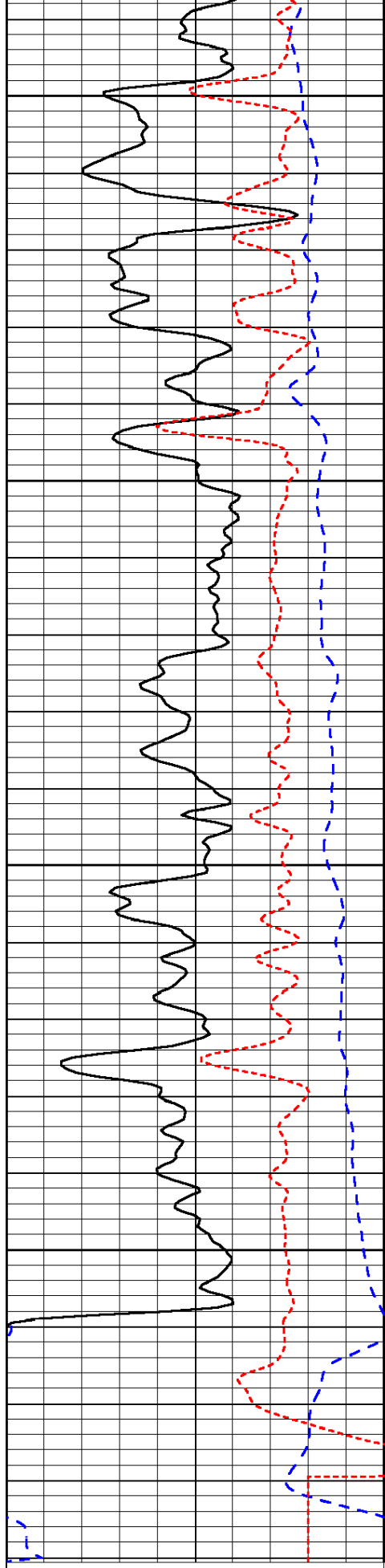


-35

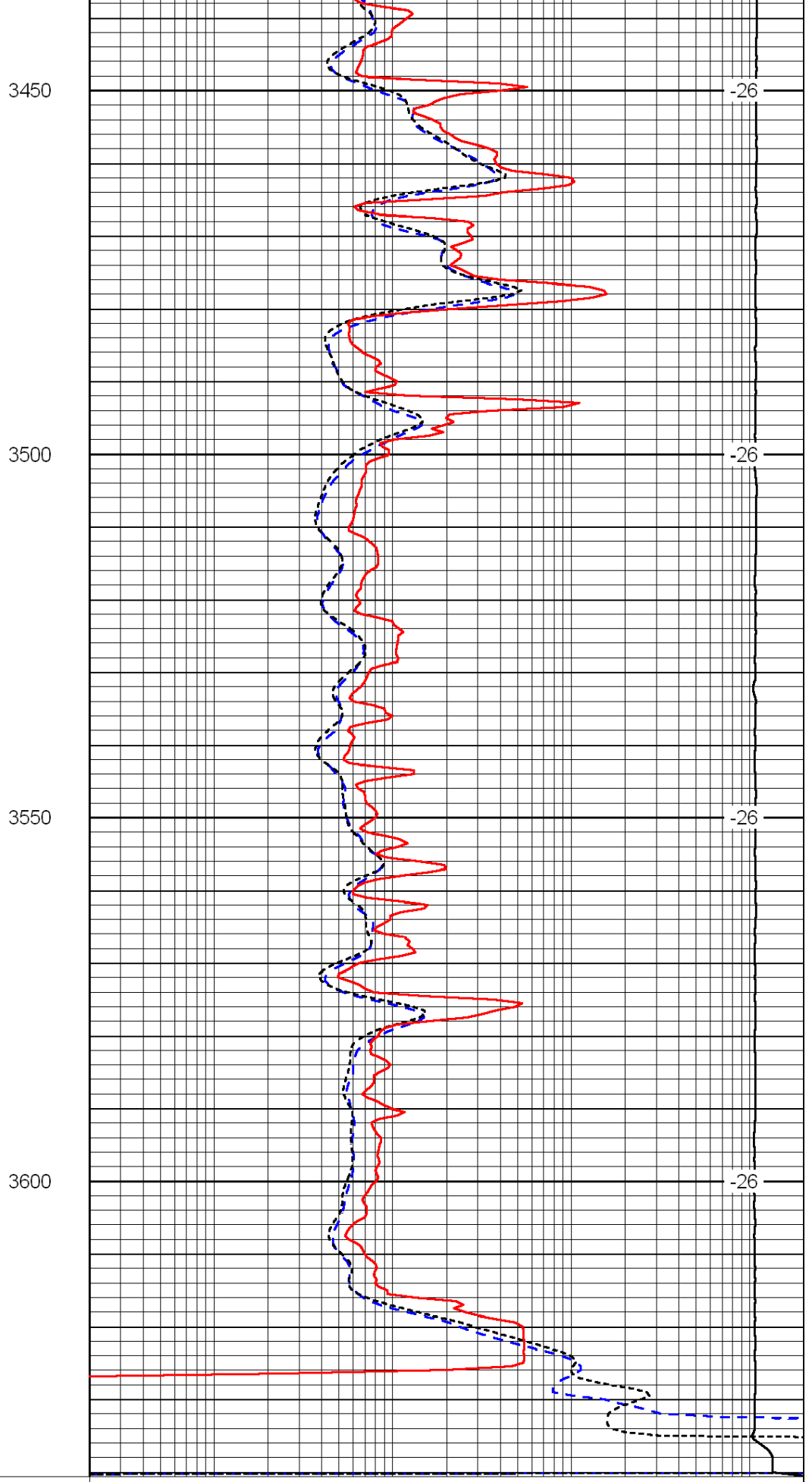
-34

-34

-26



0	Gamma Ray	150
-200	SP (mV)	0
-160	Rxo / Rt	40



0.2	Deep Resistivity	2000
0.2	Medium Resistivity	2000
0.2	Shallow Resistivity	2000
15000	Line Tension	0

