



**DIGITAL LOG** (785) 625-3858

**Microresistivity  
Log**

API No. 15-065-23,765-00-00

Company Prospect Oil & Gas, Inc.  
Well DeYoung "C" No. 1  
Field Cooper  
County Graham State Kansas

Location 850' FNL & 1000' FEL

Sec: 11 Twp: 10 S Rge: 21 W

Other Services  
CNL/CDL  
DIL

Permanent Datum	Ground Level	Elevation	2271
Log Measured From	Kelly Bushing	5	Ft. Above Perm. Datum
Drilling Measured From	Kelly Bushing		
Date	8/17/2011		
Run Number	Two		
Depth Driller	3920		
Depth Logger	3917		
Bottom Logged Interval	3916		
Top Log Interval	3200		
Casing Driller	8.625 @ 221		
Casing Logger	215		
Bit Size	7.875		
Type Fluid in Hole	Chemical		
Salinity, ppm CL	3100		
Density / Viscosity	9.2   62		
pH / Fluid Loss	10.5   6.8		
Source of Sample	Flowline		
Rm @ Meas. Temp	.51 @ 84		
Rmf @ Meas. Temp	.38 @ 84		
Rmc @ Meas. Temp	.69 @ 84		
Source of Rmf / Rmc	Charts		
Rm @ BHT	.37 @ 115		
Operating Rig Time	3 1/2 Hours		
Max Rec. Temp. F	115		
Equipment Number	10		
Location	Hays		
Recorded By	D. Kerr		
Witnessed By	Brad Hutchison		

<<< Fold Here >>>

All interpretations are opinions based on inferences from electrical or other measurements and we cannot and do not guarantee the accuracy or correctness of any interpretation, and we shall not, except in the case of gross or willful negligence on our part, be liable or responsible for any loss, costs, damages, or expenses incurred or sustained by anyone resulting from any interpretation made by any of our officers, agents or employees. These interpretations are also subject to our general terms and conditions set out in our current Price Schedule.

**Comments**

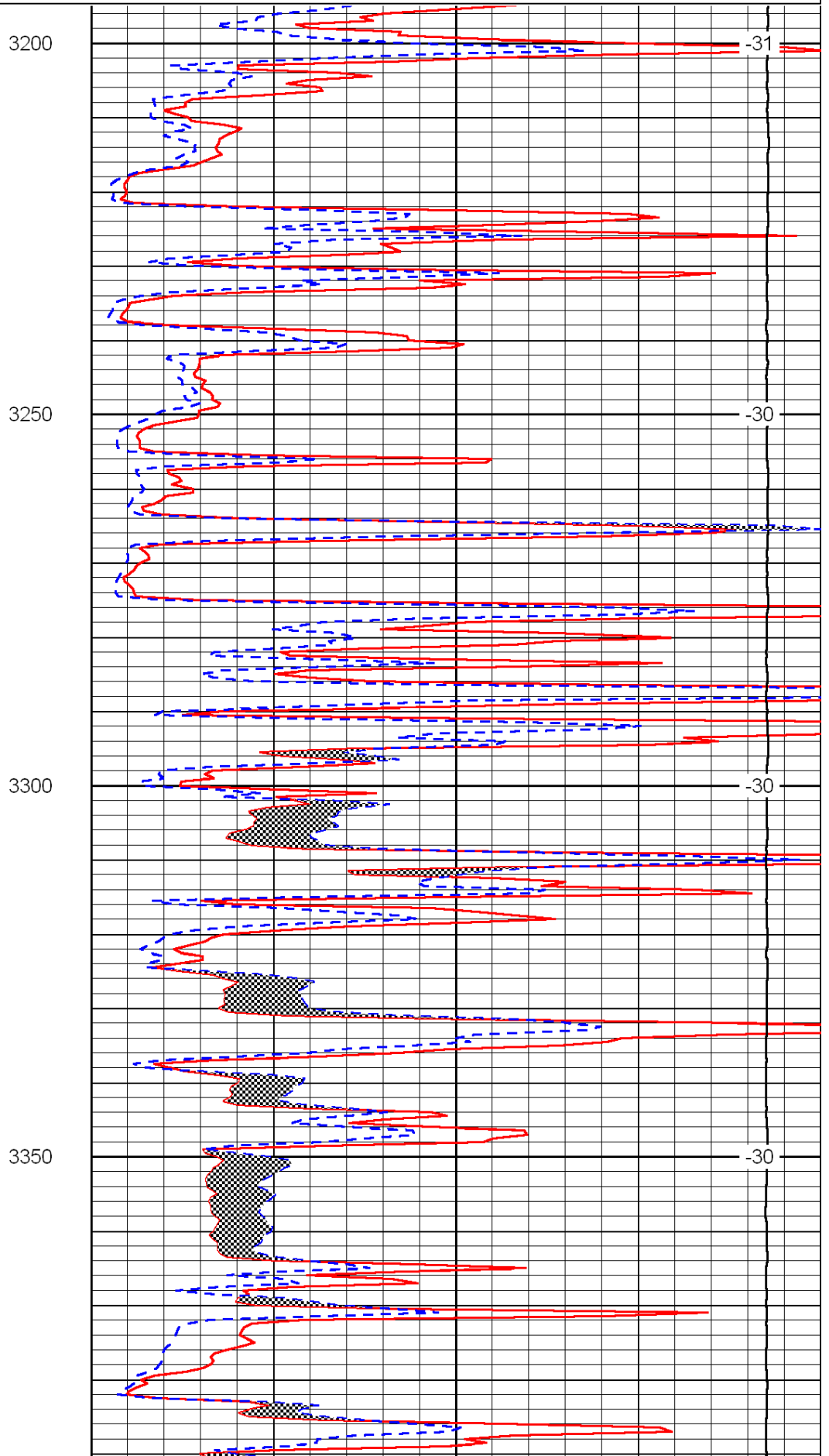
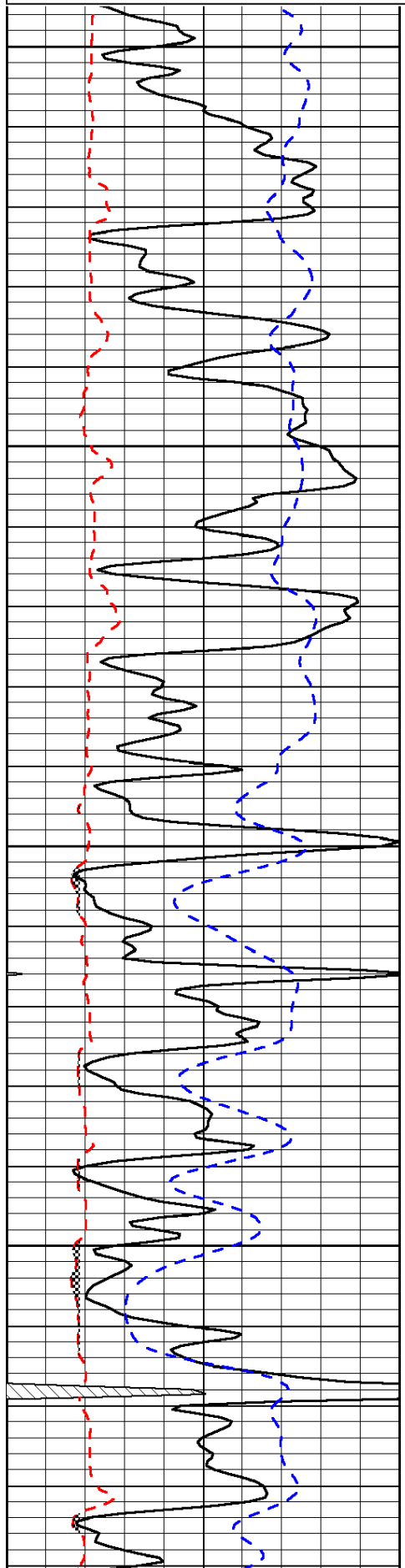
Thank you for using Log-Tech, Inc.  
(785) 625-3858

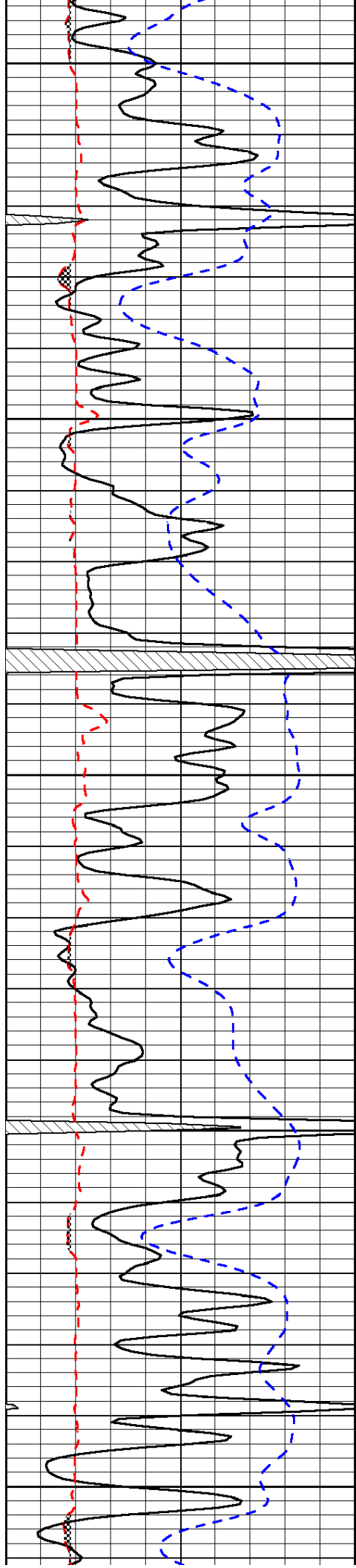
Palco KS, South to Y Rd, 3 West to 390th Rd,  
1 1/4 South, West Into

0	Gamma Ray	150
6	Micro Log Caliper (GAPI)	16
-200	SP (mV)	0

0	Micro Inverse 1 X 1	40
0	Micro Normal 2"	40
15000	Line Weight	0

LSPD





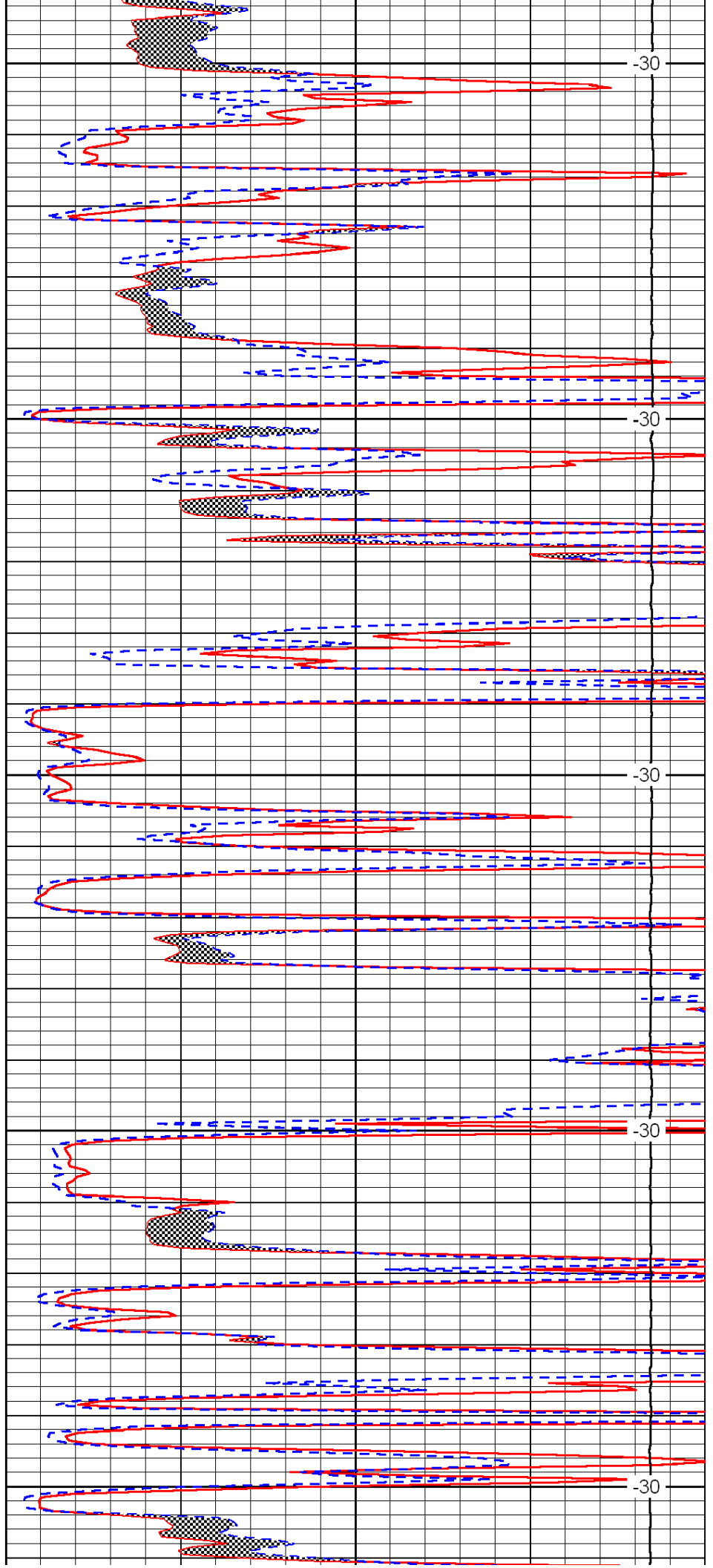
3400

3450

3500

3550

3600



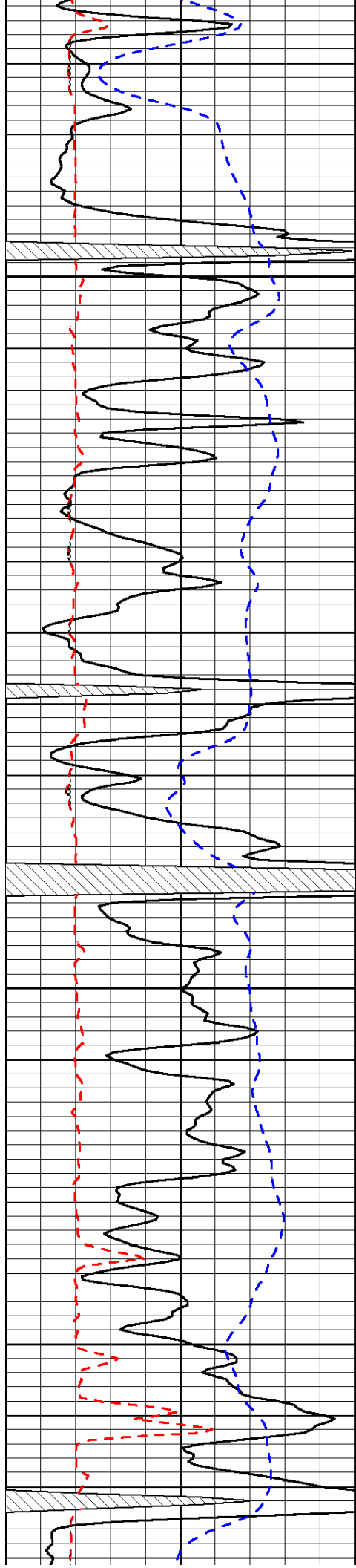
-30

-30

-30

-30

-30

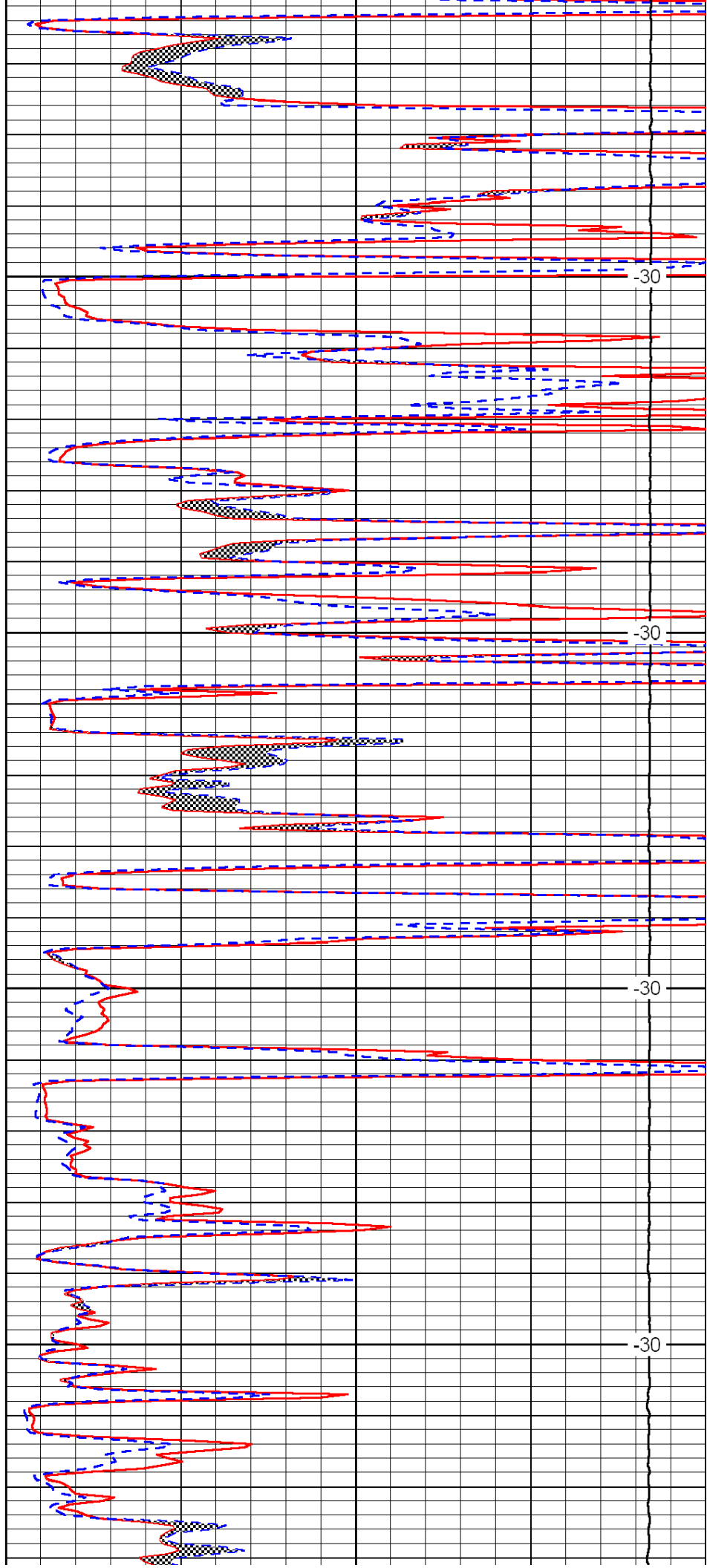


3650

3700

3750

3800

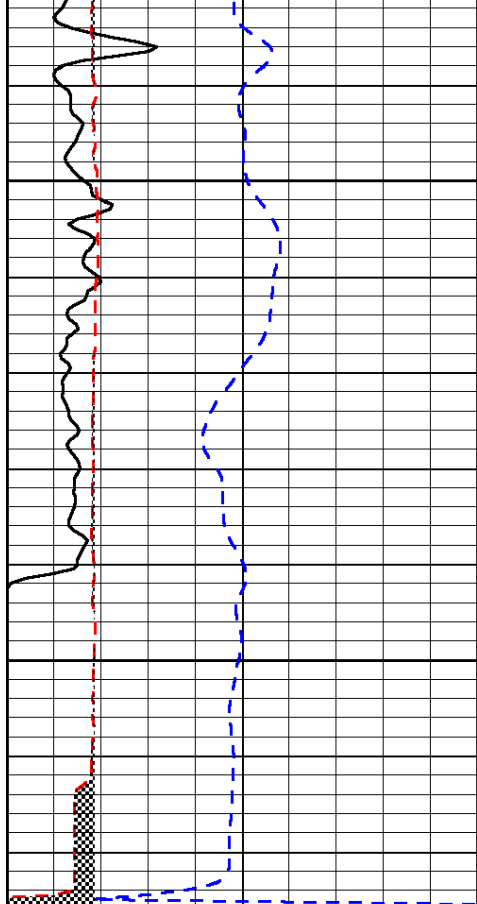


-30

-30

-30

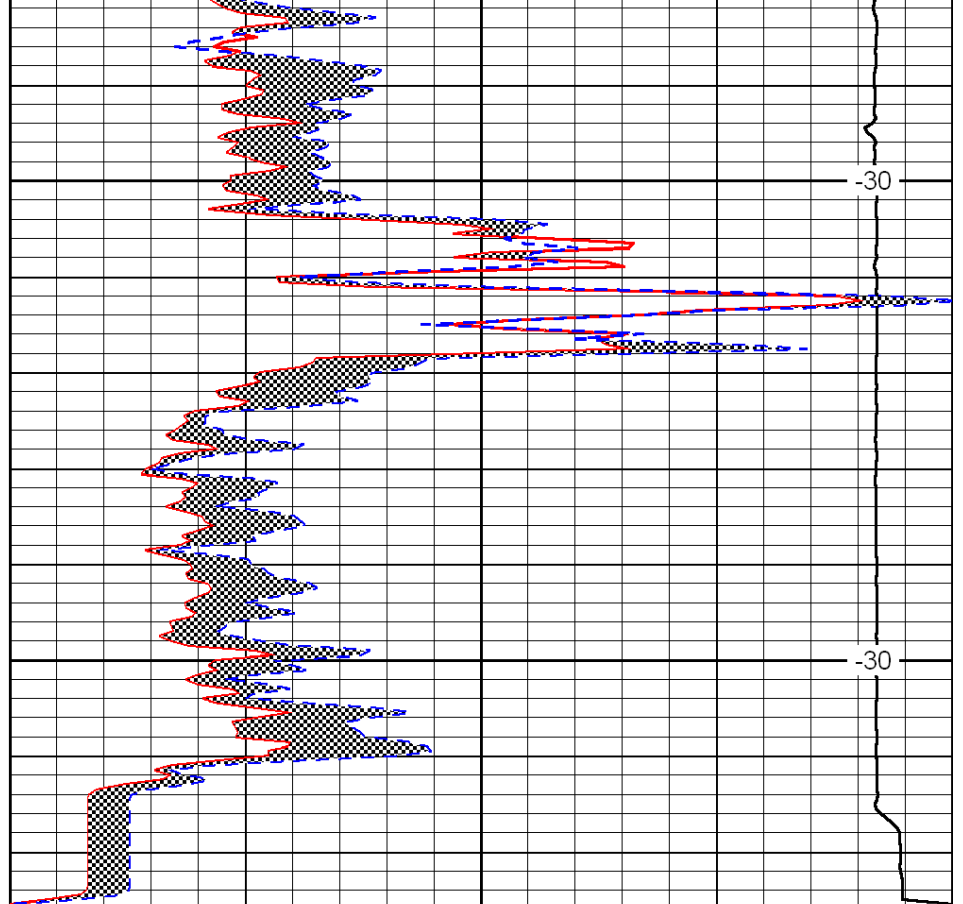
-30



0	Gamma Ray	150
6	Micro Log Caliper (GAPI)	16
-200	SP (mV)	0

3850

3900



0	Micro Inverse 1 X 1	40
0	Micro Normal 2''	40
15000	Line Weight	0

LSPD