



DIGITAL LOG (785) 625-3858

Dual Induction Log

API No. 15-065-23,765-00-00

Company Prospect Oil & Gas, Inc.
 Well DeYoung "C" No. 1
 Field Cooper
 County Graham State Kansas
 Location 850' FNL & 1000' FEL

Other Services
 CNL/CDL
 MEL

Permanent Datum Ground Level Elevation 2271
 Log Measured From Kelly Bushing 5 Ft. Above Perm. Datum
 Drilling Measured From Kelly Bushing

Sec: 11 Twp: 10 S Rge: 21 W
 Date 8/17/2011

| | |
|------------------------|----------------|
| Run Number | One |
| Depth Driller | 3920 |
| Depth Logger | 3917 |
| Bottom Logged Interval | 3916 |
| Top Log Interval | 200 |
| Casing Driller | 8.625 @ 221 |
| Casing Logger | 215 |
| Bit Size | 7.875 |
| Type Fluid in Hole | Chemical |
| Salinity, ppm CL | 3100 |
| Density / Viscosity | 9.2 62 |
| pH / Fluid Loss | 10.5 6.8 |
| Source of Sample | Flowline |
| Rm @ Meas. Temp | .51 @ 84 |
| Rmf @ Meas. Temp | .38 @ 84 |
| Rmc @ Meas. Temp | .69 @ 84 |
| Source of Rmf / Rmc | Charts |
| Rm @ BHT | .37 @ 115 |
| Operating Rig Time | 3 1/2 Hours |
| Max Rec. Temp. F | 115 |
| Equipment Number | 10 |
| Location | Hays |
| Recorded By | D. Kerr |
| Witnessed By | Brad Hutchison |

<<< Fold Here >>>

All interpretations are opinions based on inferences from electrical or other measurements and we cannot and do not guarantee the accuracy or correctness of any interpretation, and we shall not, except in the case of gross or willful negligence on our part, be liable or responsible for any loss, costs, damages, or expenses incurred or sustained by anyone resulting from any interpretation made by any of our officers, agents or employees. These interpretations are also subject to our general terms and conditions set out in our current Price Schedule.

Comments

Thank you for using Log-Tech, Inc.
 (785) 625-3858

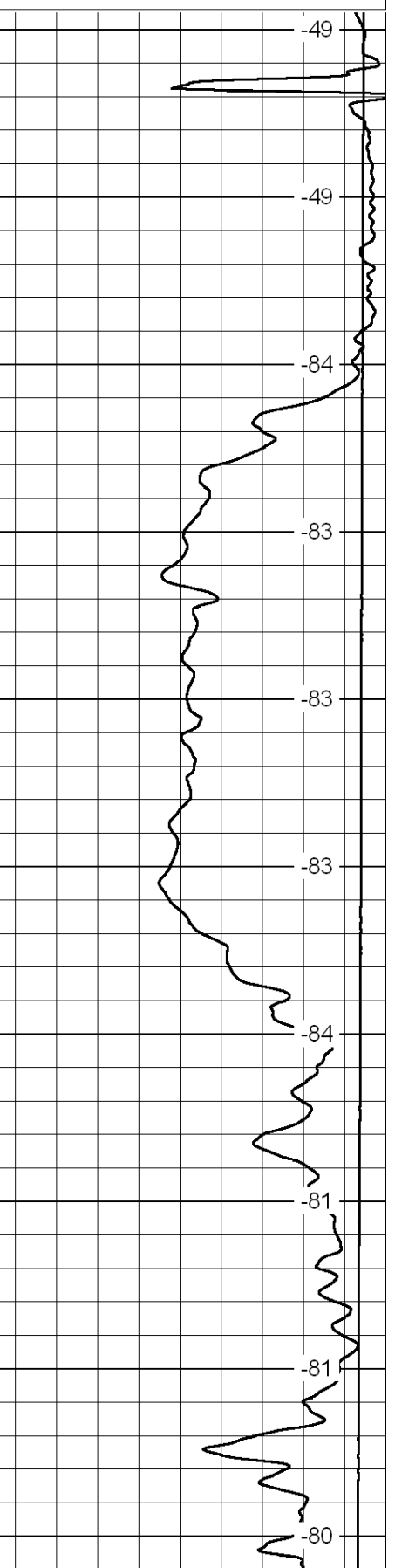
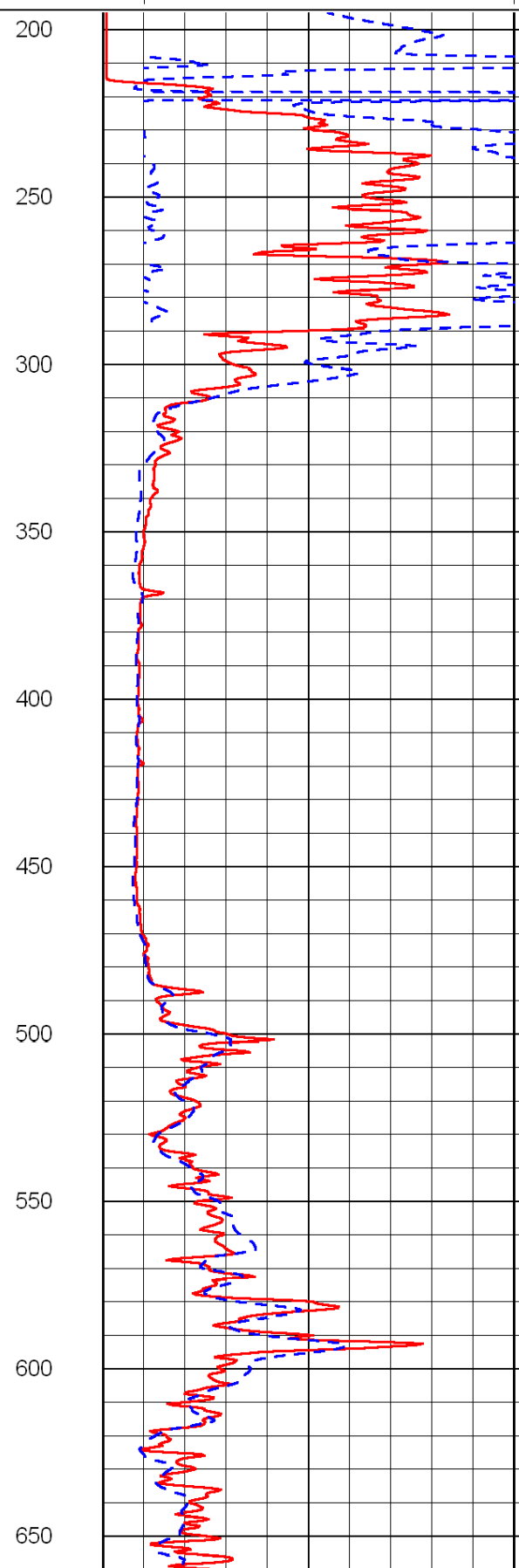
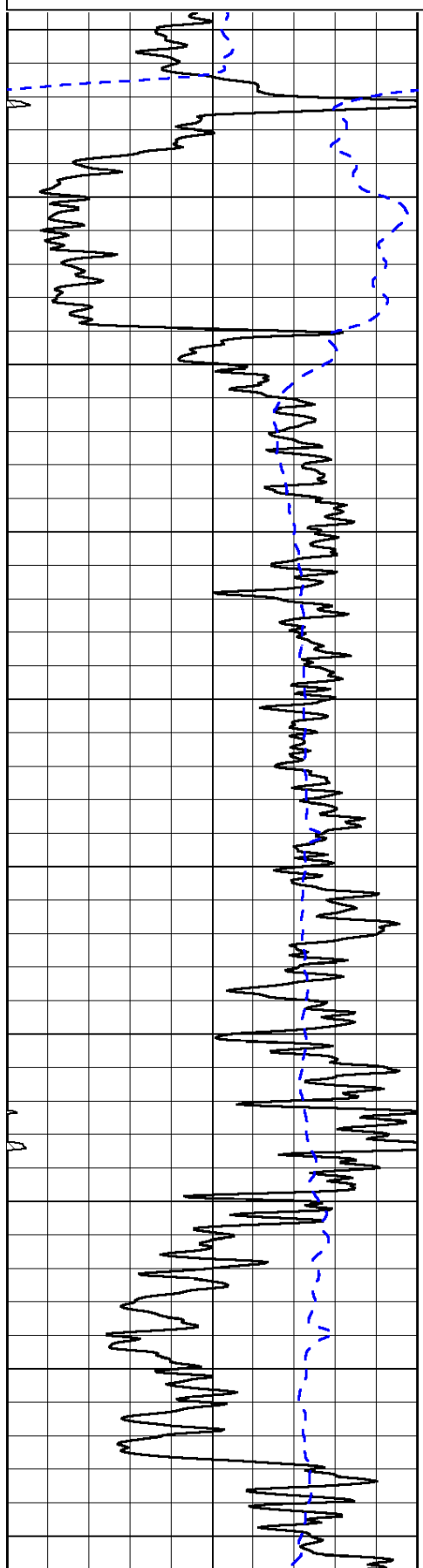
Palco KS, South to Y Rd, 3 West to 390th Rd,
 1 1/4 South, West Into

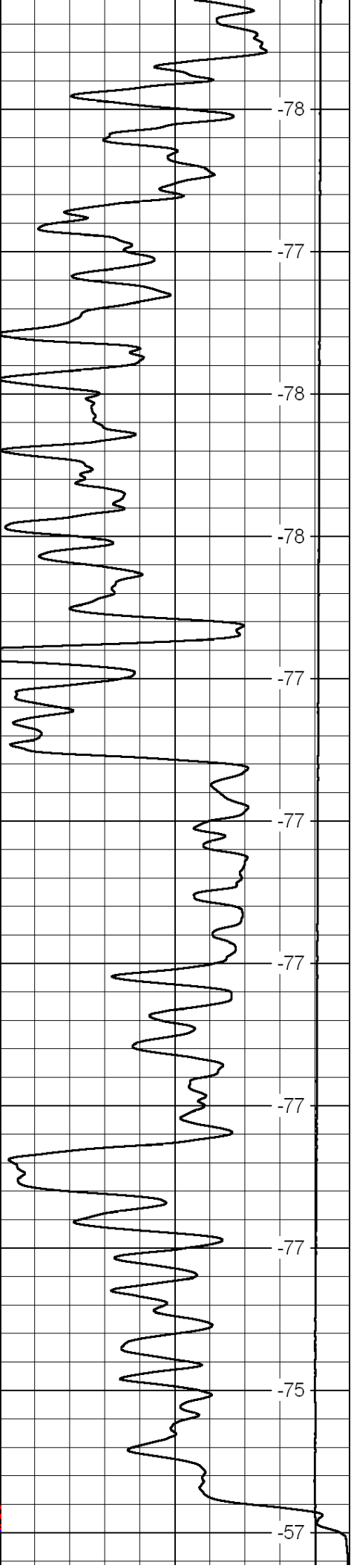
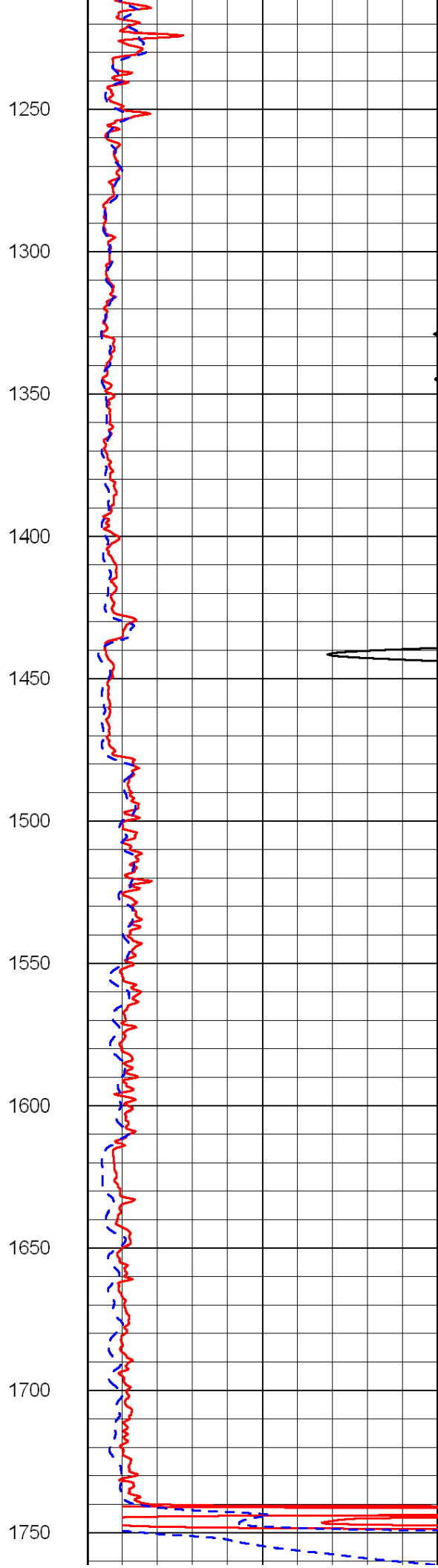
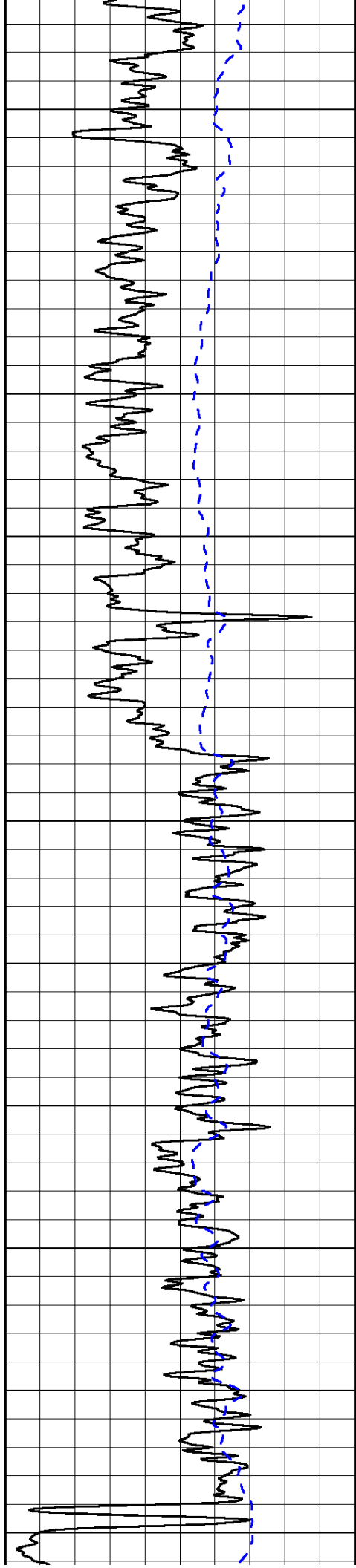
Database File: c:\warrior\data\prospect_deyoung c no. 1\prospect_deyoung_c_1hd.db
 Dataset Pathname: dil/prosstk
 Presentation Format: dil2in
 Dataset Creation: Thu Aug 18 01:52:57 2011
 Charted by: Depth in Feet scaled 1:600

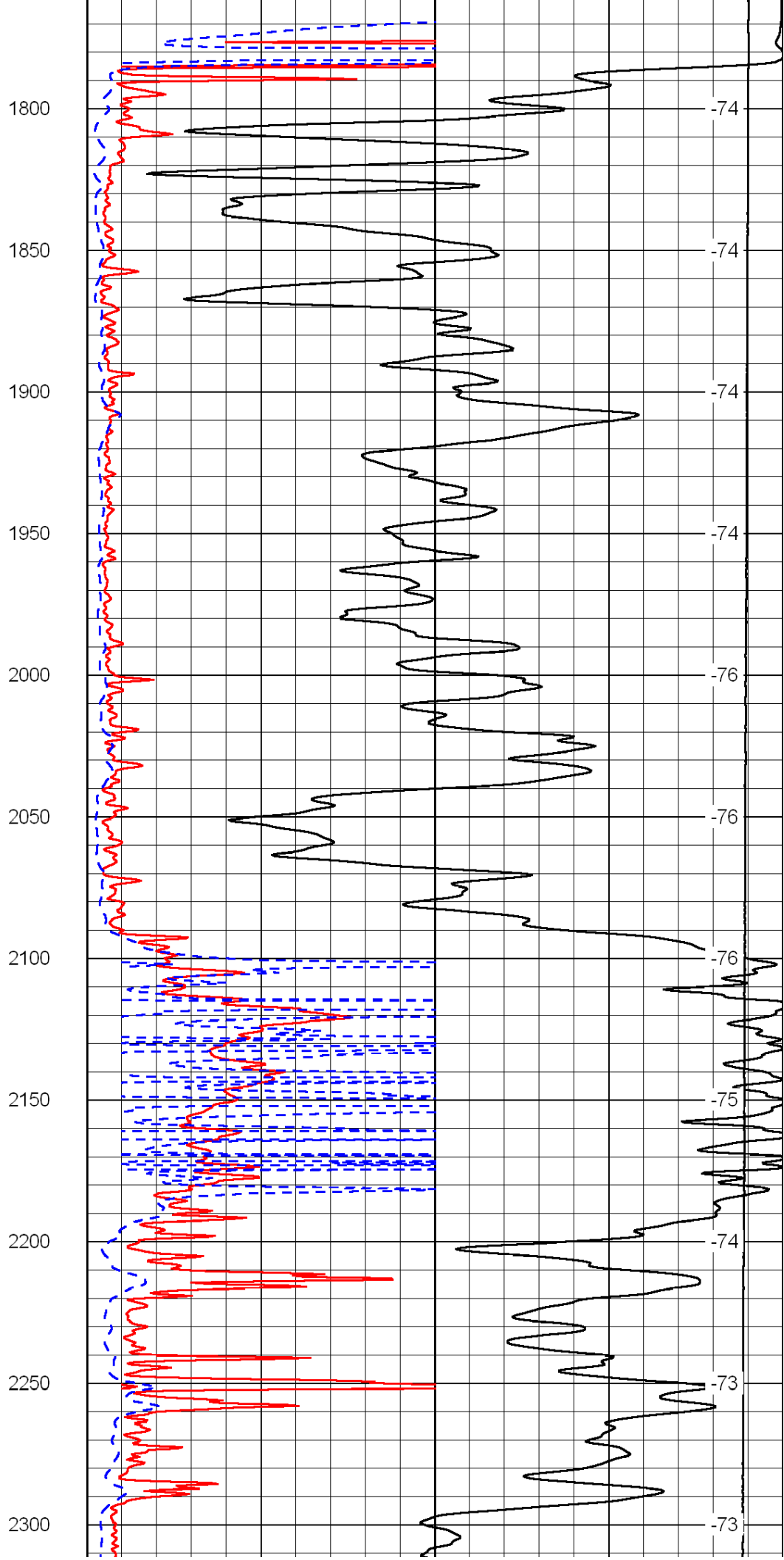
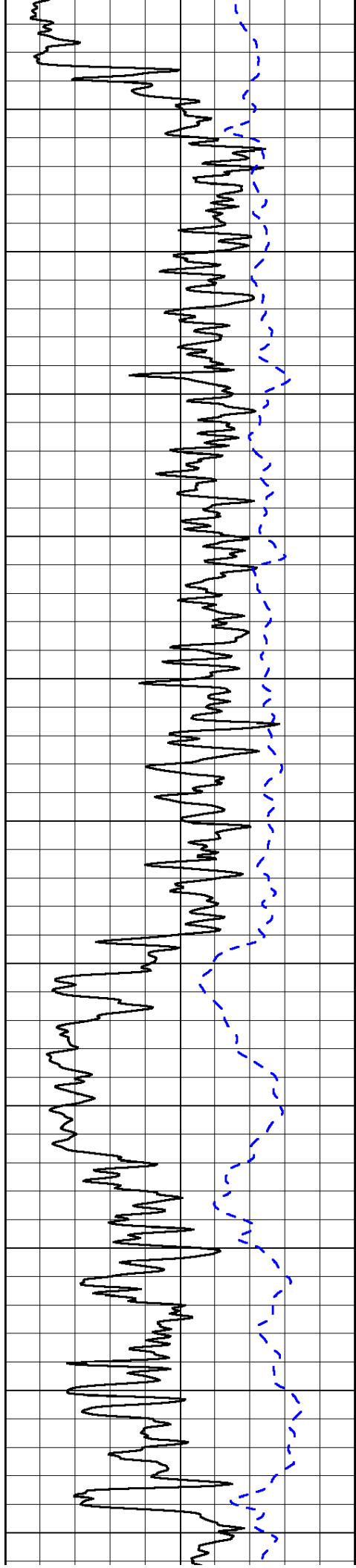
| | | |
|------|-----------|-----|
| 0 | Gamma Ray | 150 |
| -200 | SP (mV) | 0 |

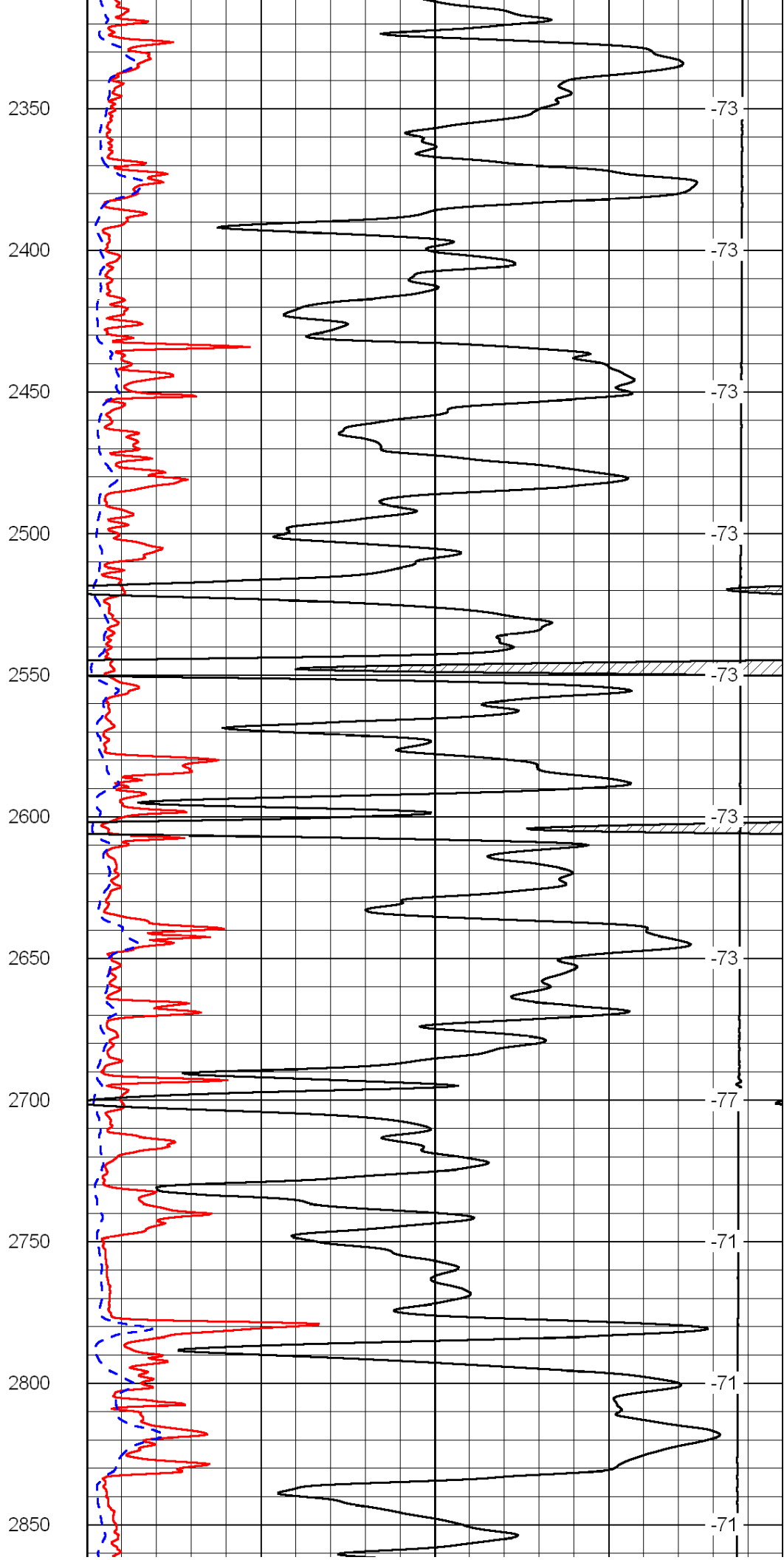
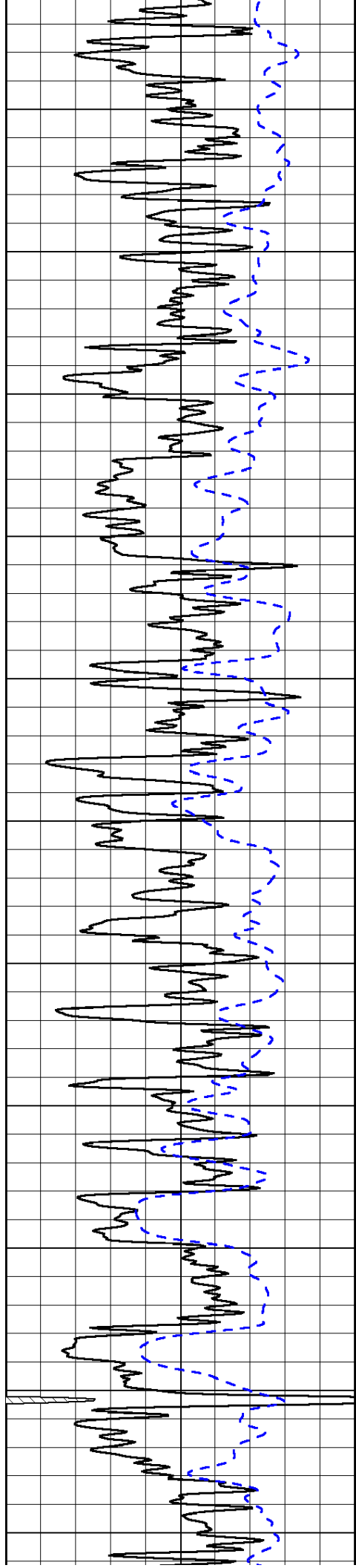
| | | |
|-------|---------------------|-----|
| 0 | Shallow Resistivity | 50 |
| 0 | Deep Resistivity | 50 |
| 1000 | Conductivity | 0 |
| 15000 | Line Tension | 0 |
| 50 | Shallow Resistivity | 500 |
| 50 | Deep Resistivity | 500 |

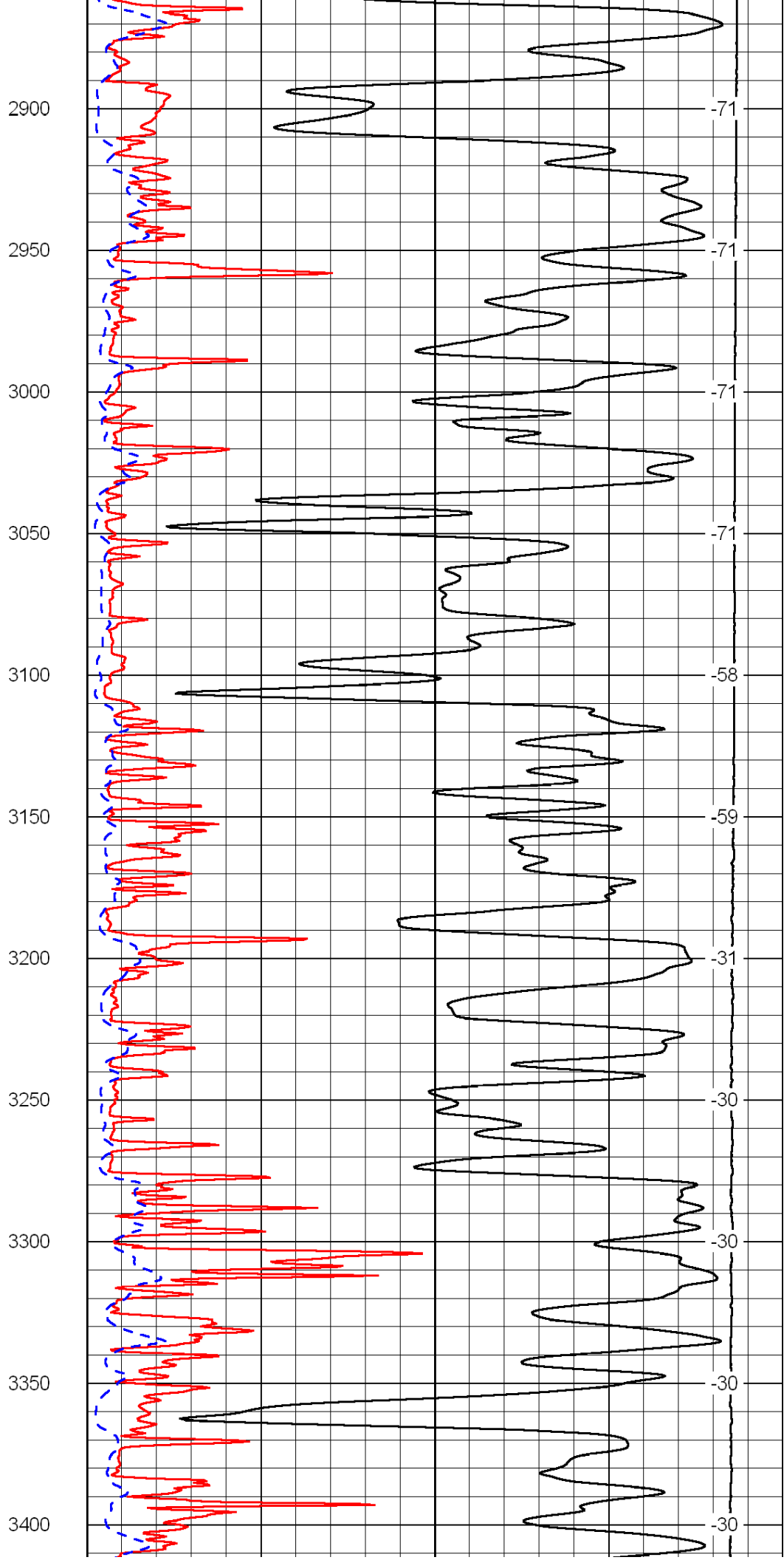
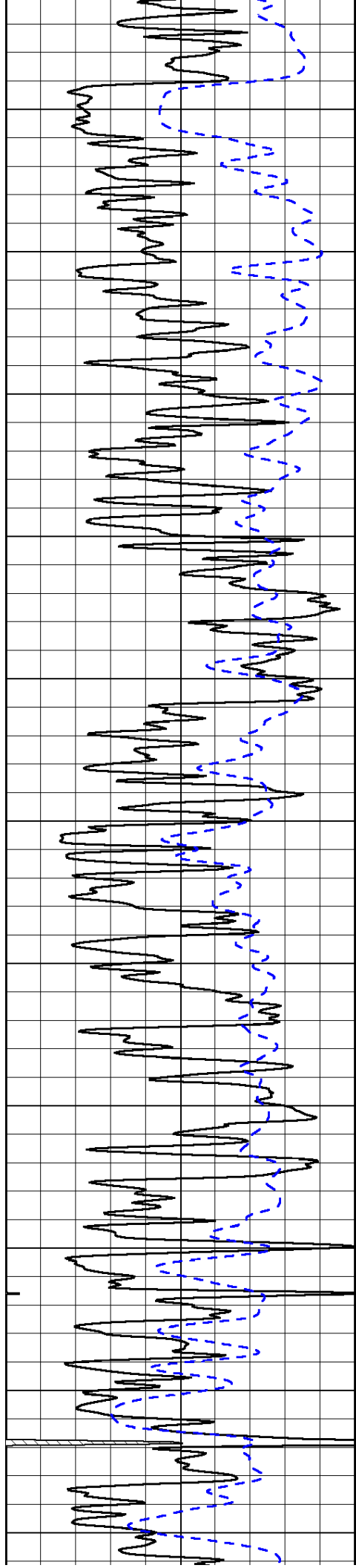
LSPD

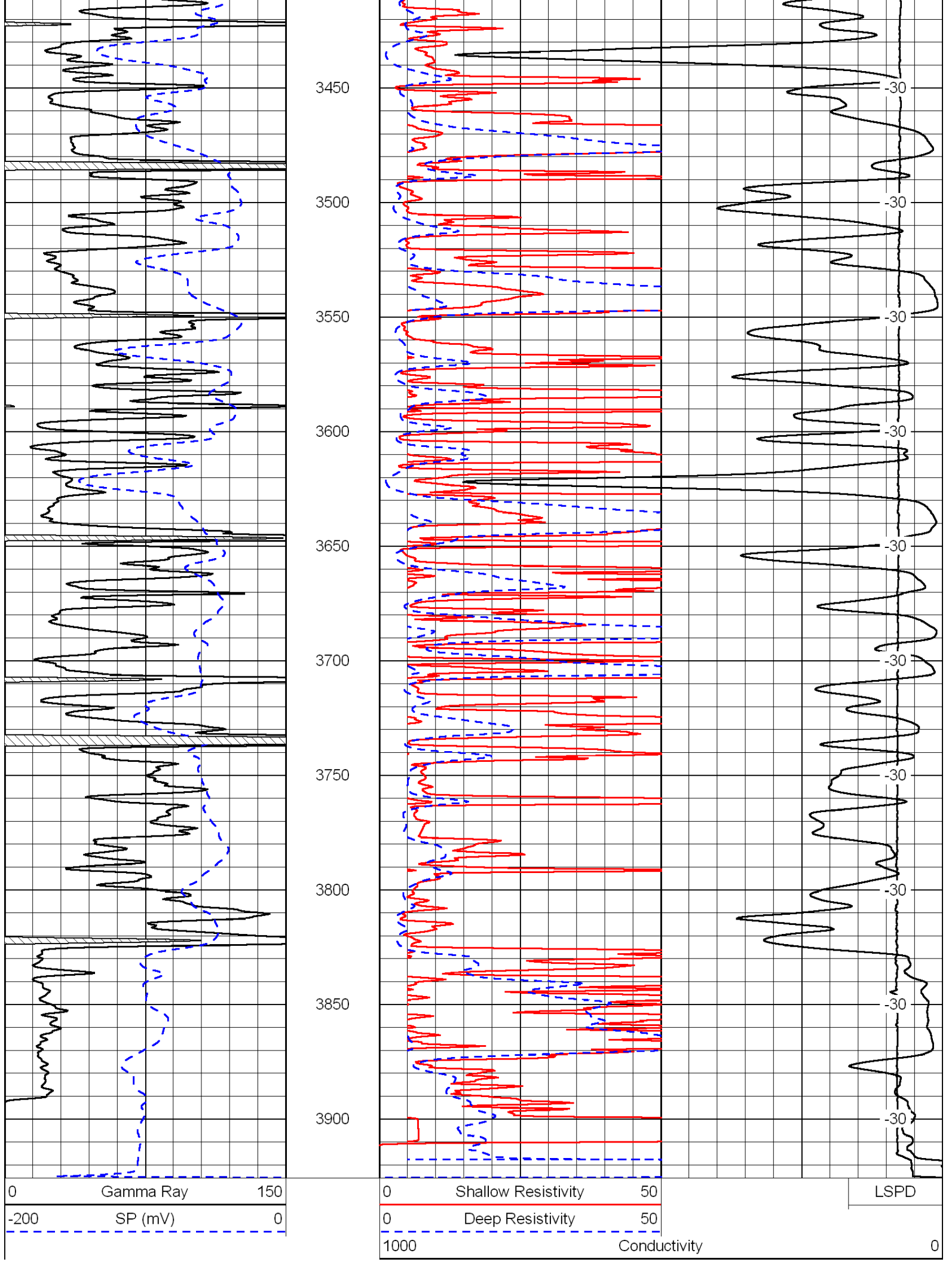








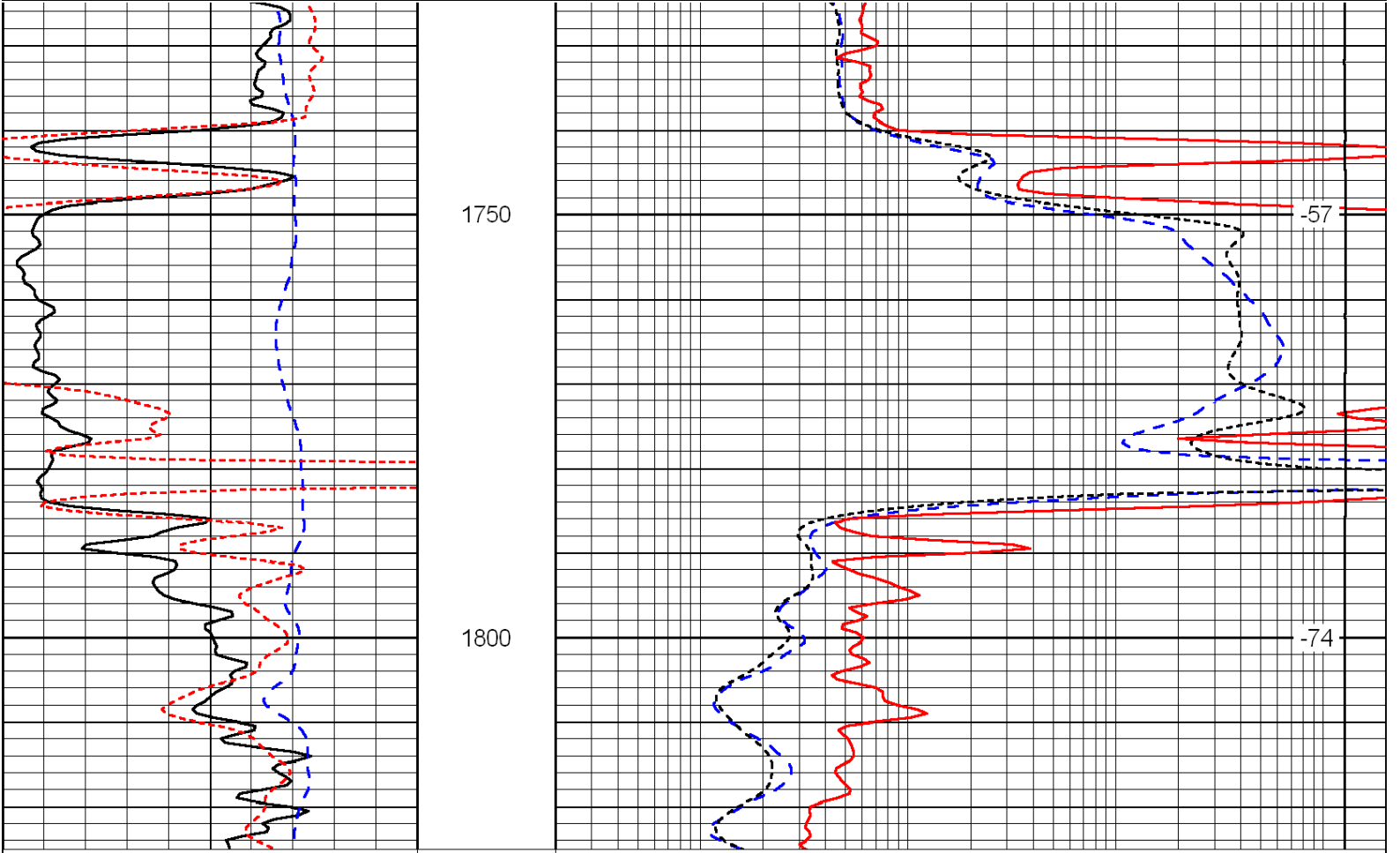




| | | |
|-------|---------------------|-----|
| 15000 | Line Tension | 0 |
| 50 | Shallow Resistivity | 500 |
| 50 | Deep Resistivity | 500 |

Database File: c:\warrior\data\prospect_deyoung c no. 1\prospect_deyoung_c_1hd.db
 Dataset Pathname: dil/prosstk
 Presentation Format: dil
 Dataset Creation: Thu Aug 18 01:52:57 2011
 Charted by: Depth in Feet scaled 1:240

| | | | | | |
|------|-----------|-----|-------|---------------------|------|
| 0 | Gamma Ray | 150 | 0.2 | Deep Resistivity | 2000 |
| -200 | SP (mV) | 0 | 0.2 | Medium Resistivity | 2000 |
| -160 | Rxo / Rt | 40 | 0.2 | Shallow Resistivity | 2000 |
| | | | 15000 | Line Tension | 0 |
| | | | | | LSPD |



| | | | | | |
|------|-----------|-----|-------|---------------------|------|
| 0 | Gamma Ray | 150 | 0.2 | Deep Resistivity | 2000 |
| -200 | SP (mV) | 0 | 0.2 | Medium Resistivity | 2000 |
| -160 | Rxo / Rt | 40 | 0.2 | Shallow Resistivity | 2000 |
| | | | 15000 | Line Tension | 0 |
| | | | | | LSPD |

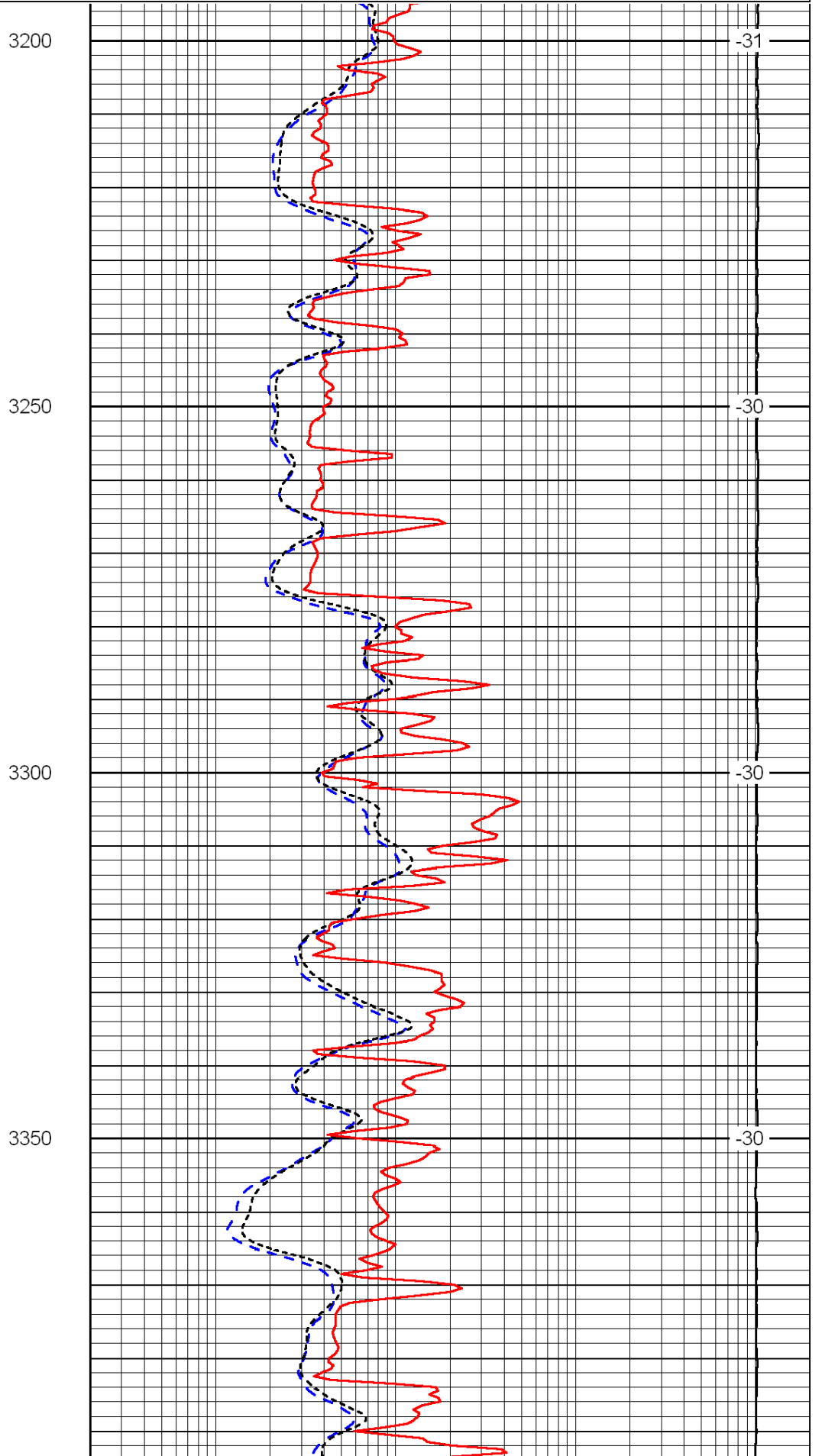
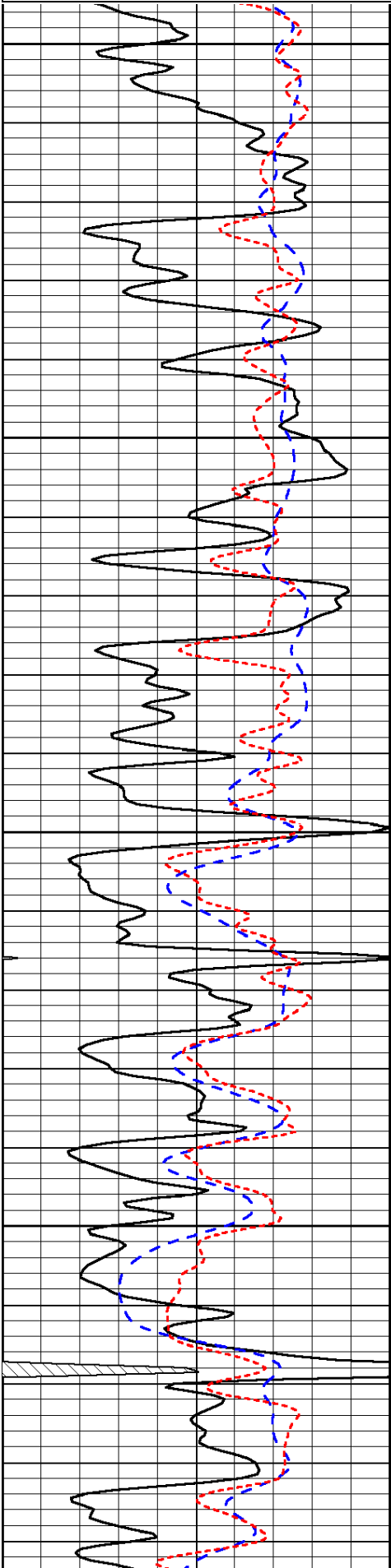
Database File: c:\warrior\data\prospect_deyoung c no. 1\prospect_deyoung_c_1hd.db
 Dataset Pathname: dil/prosstk
 Presentation Format: dil
 Dataset Creation: Thu Aug 18 01:52:57 2011
 Charted by: Depth in Feet scaled 1:240

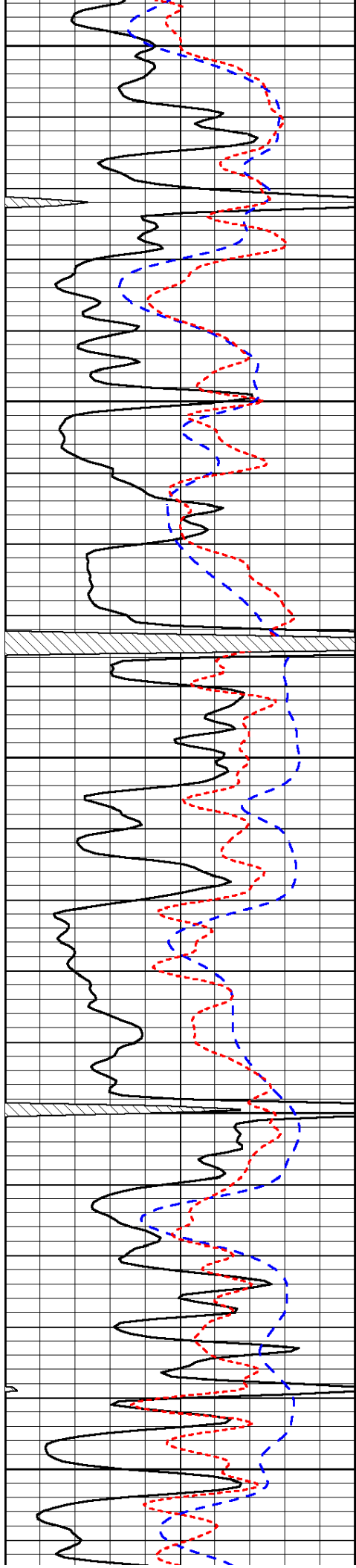
| | | | | | |
|---|-----------|-----|-----|------------------|------|
| 0 | Gamma Ray | 150 | 0.2 | Deep Resistivity | 2000 |
|---|-----------|-----|-----|------------------|------|

| | | |
|------|----------|----|
| -200 | SP (mV) | 0 |
| -160 | Rxo / Rt | 40 |

| | | |
|-------|---------------------|------|
| 0.2 | Medium Resistivity | 2000 |
| 0.2 | Shallow Resistivity | 2000 |
| 15000 | Line Tension | 0 |

LSPD





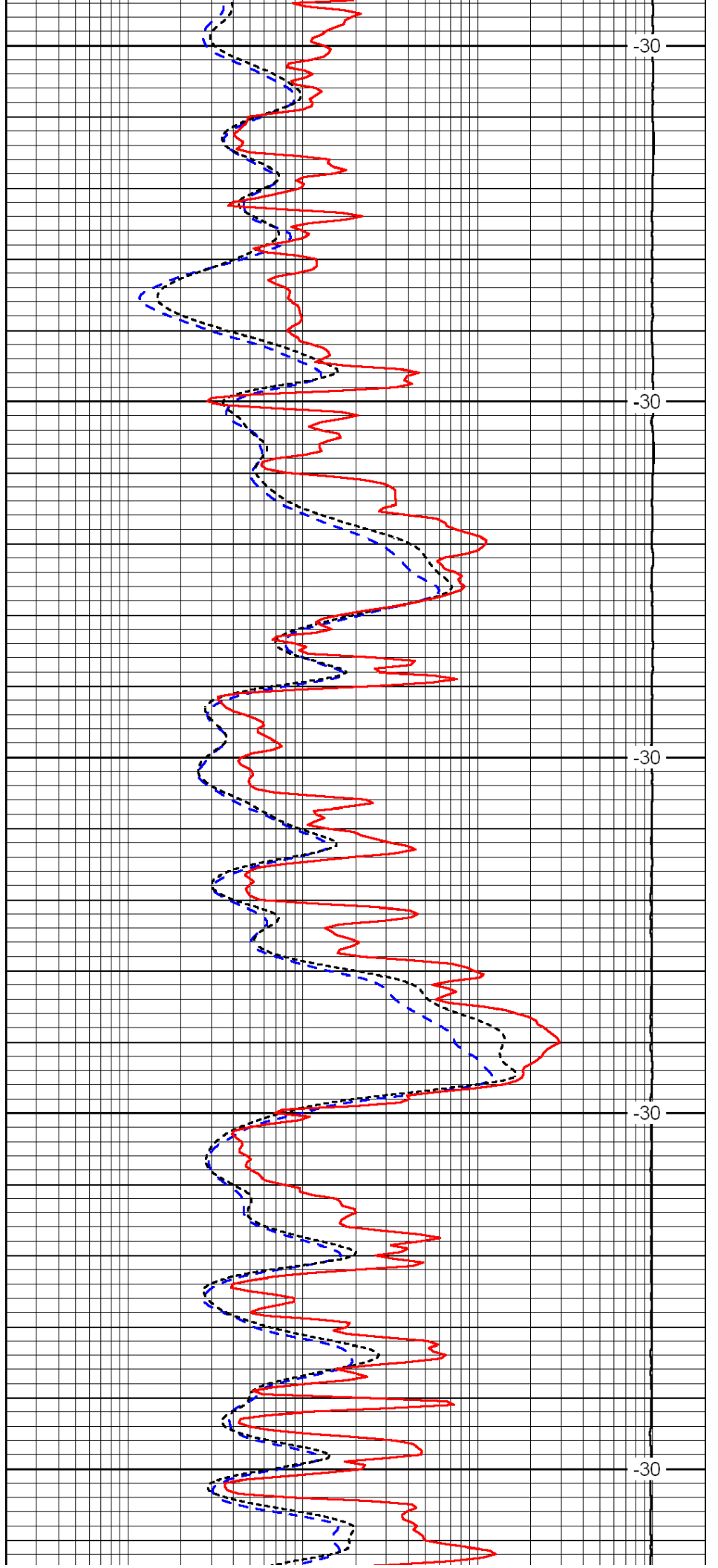
3400

3450

3500

3550

3600



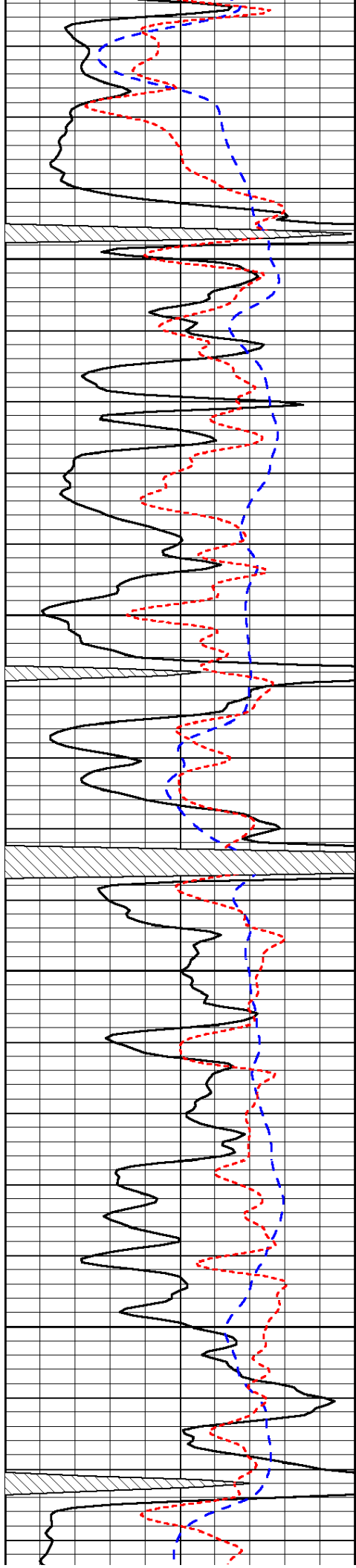
-30

-30

-30

-30

-30

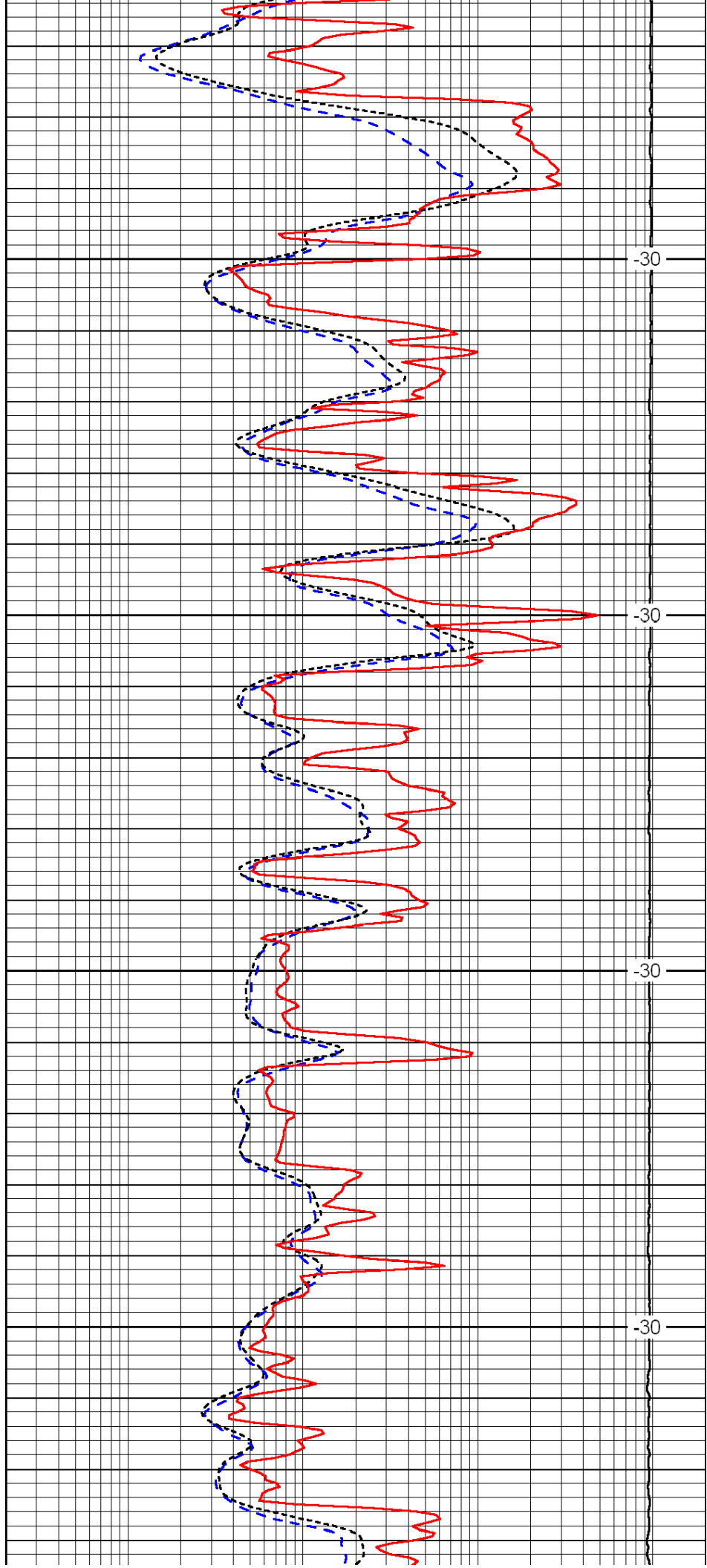


3650

3700

3750

3800

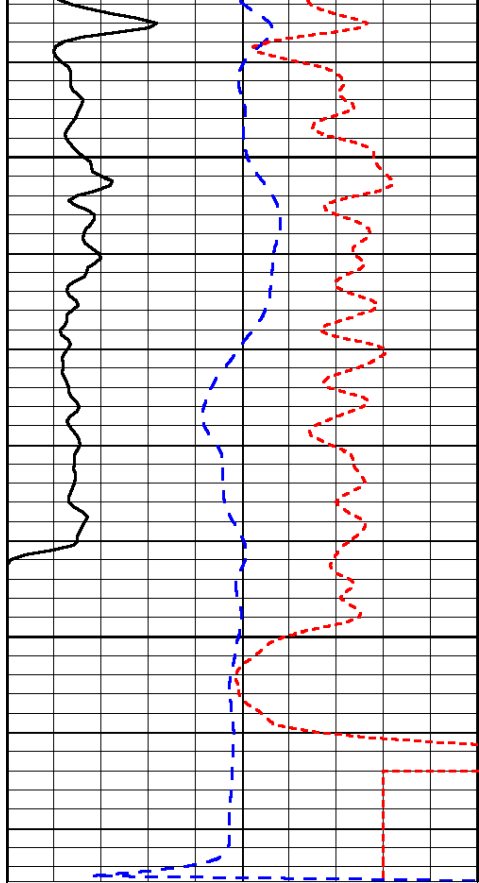


-30

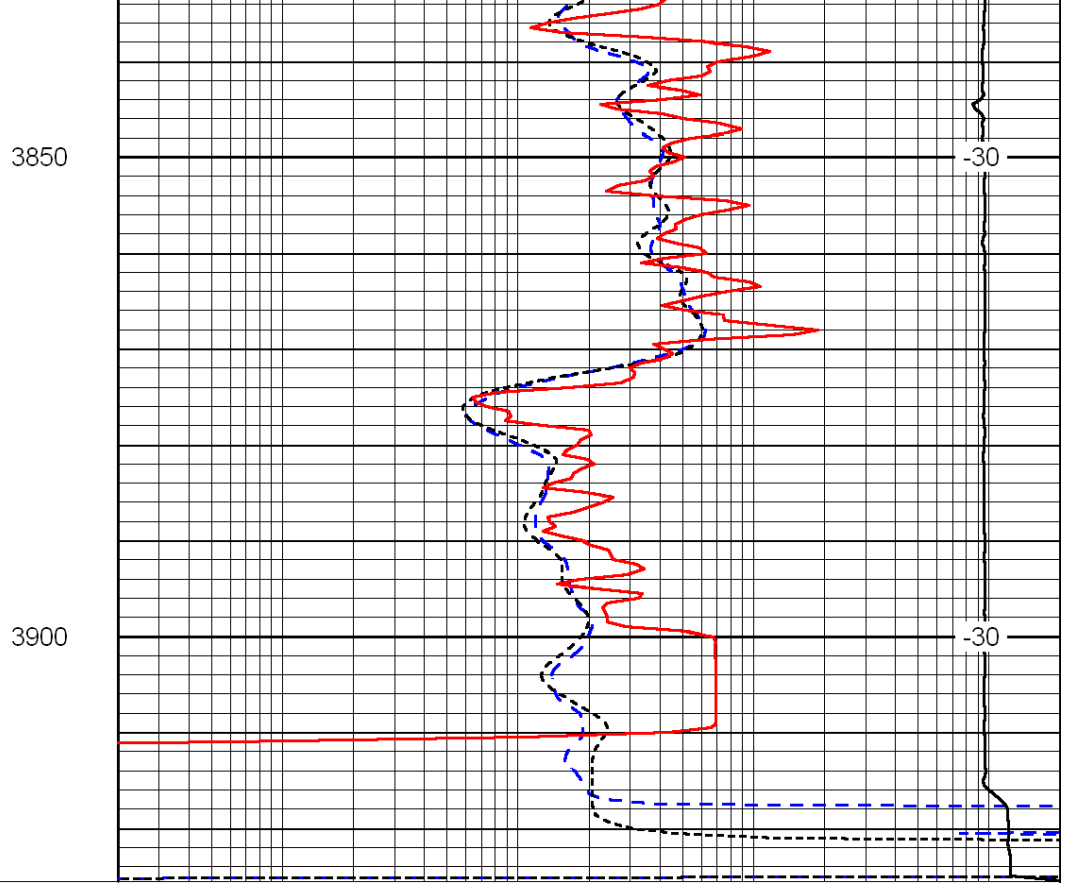
-30

-30

-30



| | | |
|------|-----------|-----|
| 0 | Gamma Ray | 150 |
| -200 | SP (mV) | 0 |
| -160 | Rxo / Rt | 40 |



| | | |
|-------|---------------------|------|
| 0.2 | Deep Resistivity | 2000 |
| 0.2 | Medium Resistivity | 2000 |
| 0.2 | Shallow Resistivity | 2000 |
| 15000 | Line Tension | 0 |

LSPD