



DIGITAL LOG (785) 625-3858

Dual Induction Log

API No. 15-197-20,288-00-00

Company L.D. Drilling, Inc.
 Well Andrew Wendland No.2
 Field
 County Wabaunsee State Kansas

Location SE NE NE
 990' FNL & 330' FEL

Other Services
 CNL/CDL
 MEL/BHCS

Sec: 4 Twp: 13S Rge: 13E
 Elevation 1035

Permanent Datum Ground Level
 Log Measured From Ground Level 0 Ft. Above Perm. Datum
 Drilling Measured From Ground Level

K.B.
 D.F.
 G.L. 1035

Date	3/24/2011	
Run Number	One	
Depth Driller	2926	
Depth Logger	2933	
Bottom Logged Interval	2932	
Top Log Interval	300	
Casing Driller	8.625 @ 300	
Casing Logger	299	
Bit Size	7.875	
Type Fluid in Hole	Chemical	
Salinity, ppm CL	2.400	
Density / Viscosity	8.8 50	
pH / Fluid Loss	9.0 11.2	
Source of Sample	Flowline	
Rm @ Meas. Temp	1.2 @ 57	
Rmf @ Meas. Temp	.9 @ 57	
Rmc @ Meas. Temp	1.62 @ 57	
Source of Rmf / Rmc	Charts	
Rm @ BHT	.64 @ 107	
Operating Rig Time	3 1/2 Hours	
Max Rec. Temp. F	107	
Equipment Number	17	
Location	Hays	
Recorded By	C. Desaire	
Witnessed By	George Petersen	Verne Dow

<<< Fold Here >>>

All interpretations are opinions based on inferences from electrical or other measurements and we cannot and do not guarantee the accuracy or correctness of any interpretation, and we shall not, except in the case of gross or willful negligence on our part, be liable or responsible for any loss, costs, damages, or expenses incurred or sustained by anyone resulting from any interpretation made by any of our officers, agents or employees. These interpretations are also subject to our general terms and conditions set out in our current Price Schedule.

Comments

Thank you for using Log-Tech, Inc.
 (785) 625-3858

Dover, 2 W, 1/4 S, W Into

Database File: c:\warrior\data\ld drilling_andrew wendland no.2\ldhd.db
 Dataset Pathname: dil\dstk
 Presentation Format: dil2in
 Dataset Creation: Sun Mar 27 14:50:34 2011
 Charted by: Depth in Feet scaled 1:600

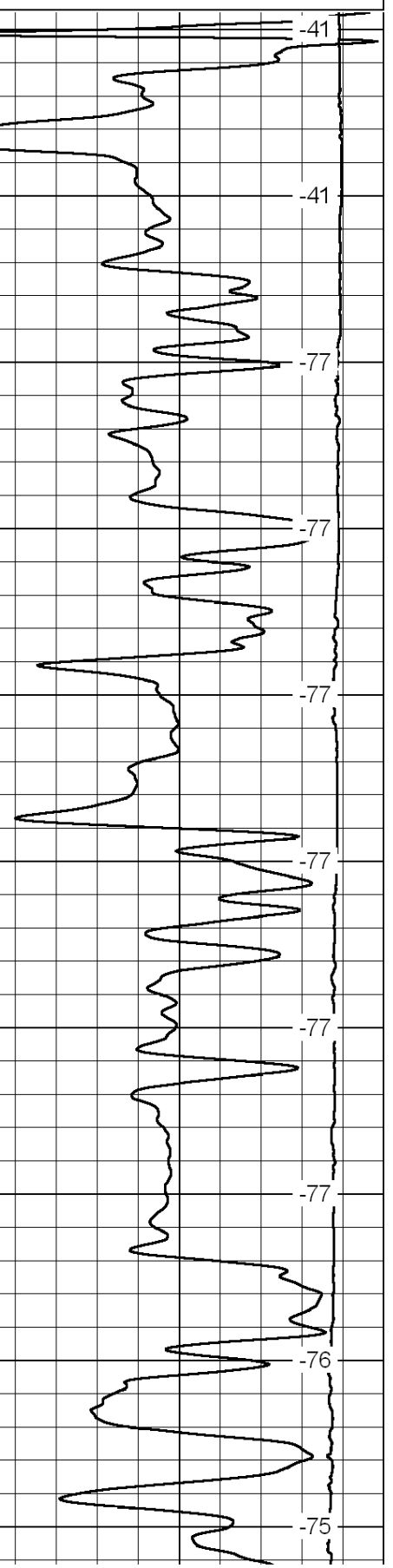
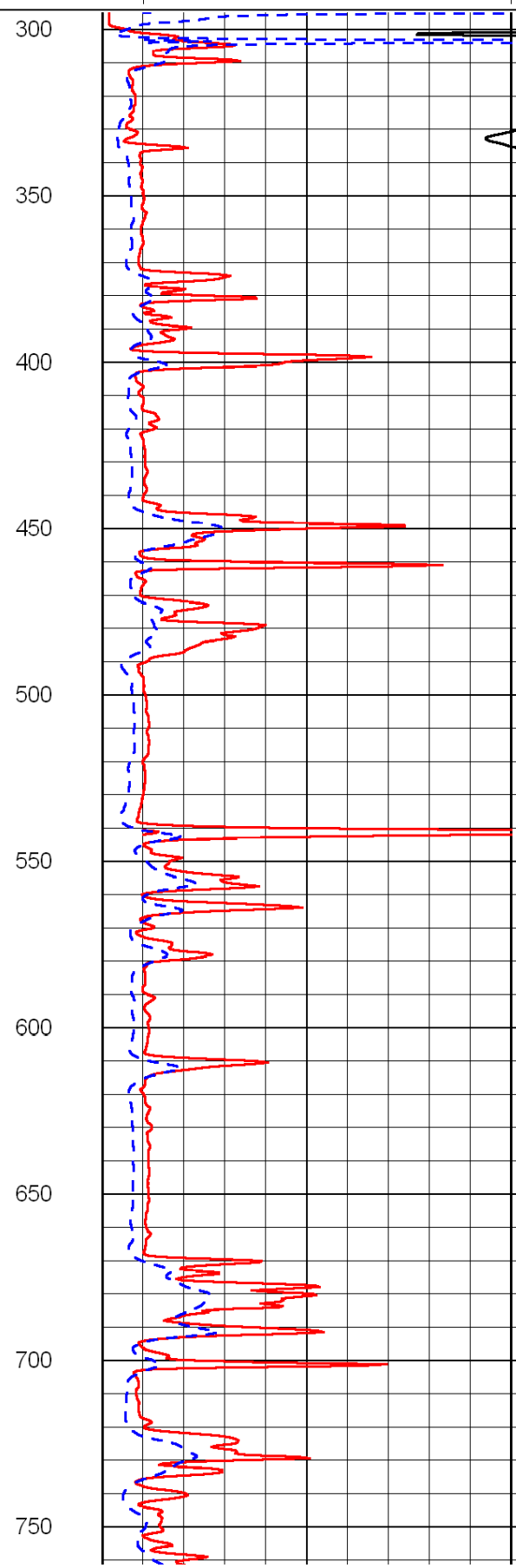
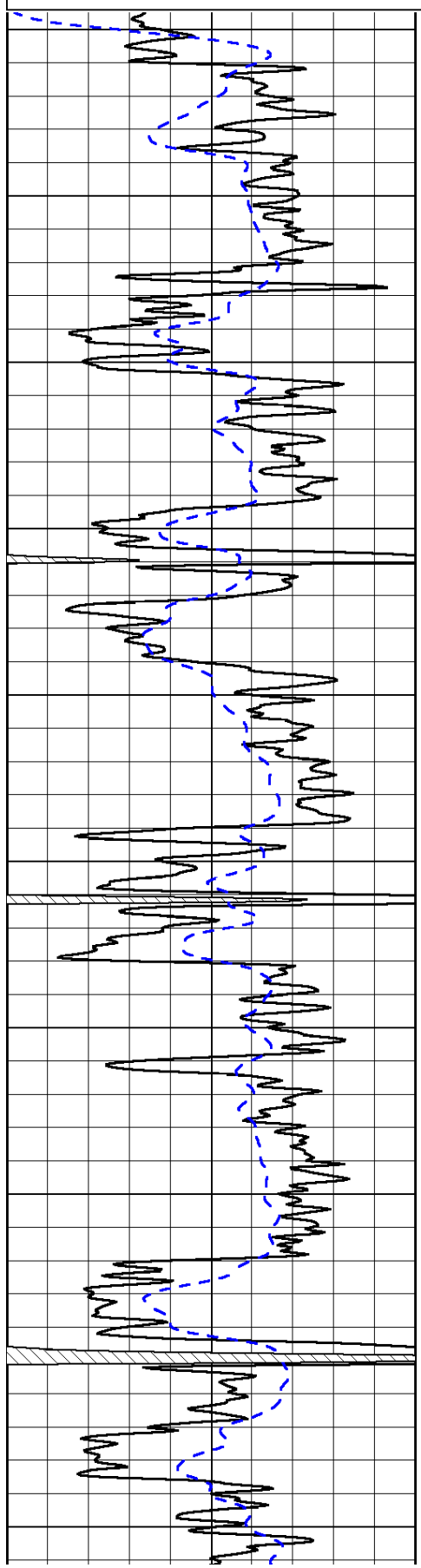
0	Gamma Ray	150
-200	SP (mV)	0

0	Shallow Resistivity	50
0	Deep Resistivity	50

LSPD

1000	Conductivity	0
15000	Line Tension	0

50	Shallow Resistivity	500
50	Deep Resistivity	500



300 -41

350 -41

400 -77

450 -77

500 -77

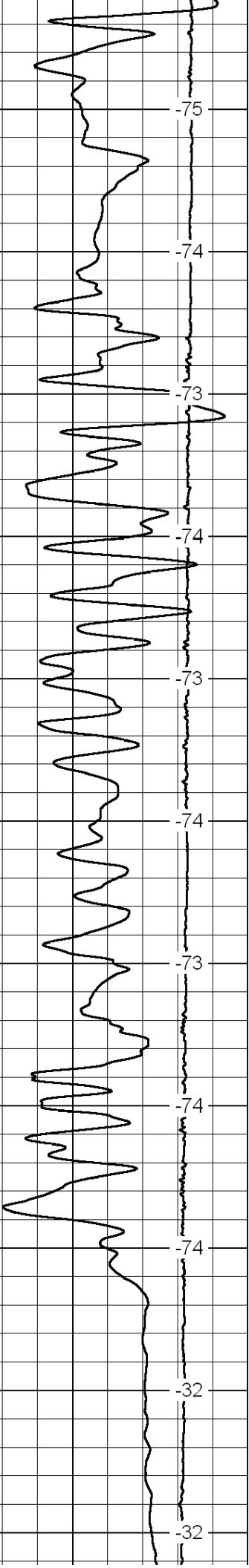
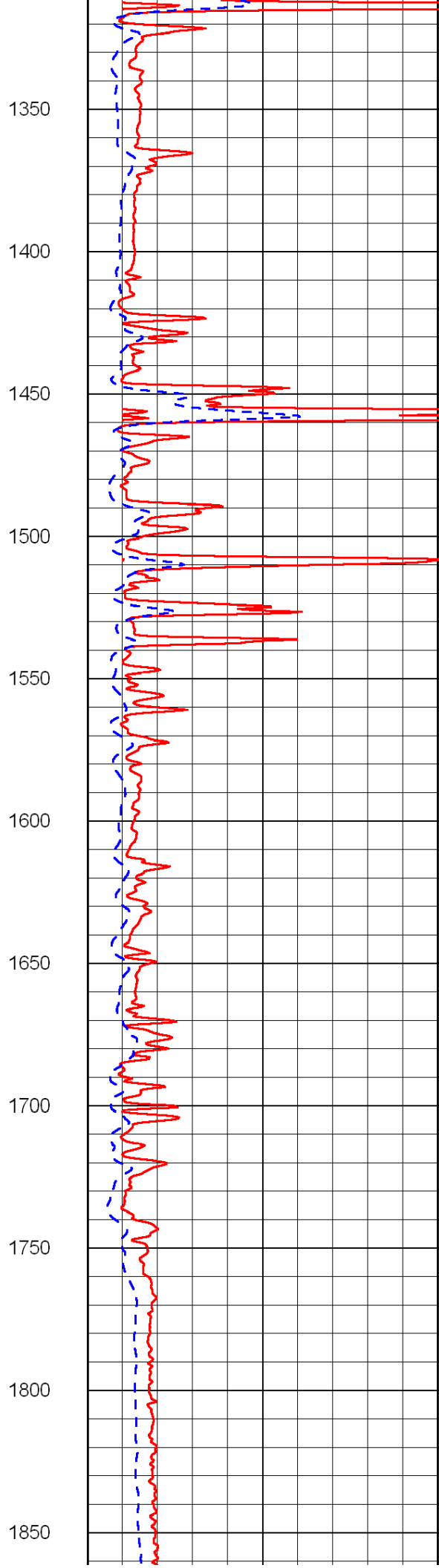
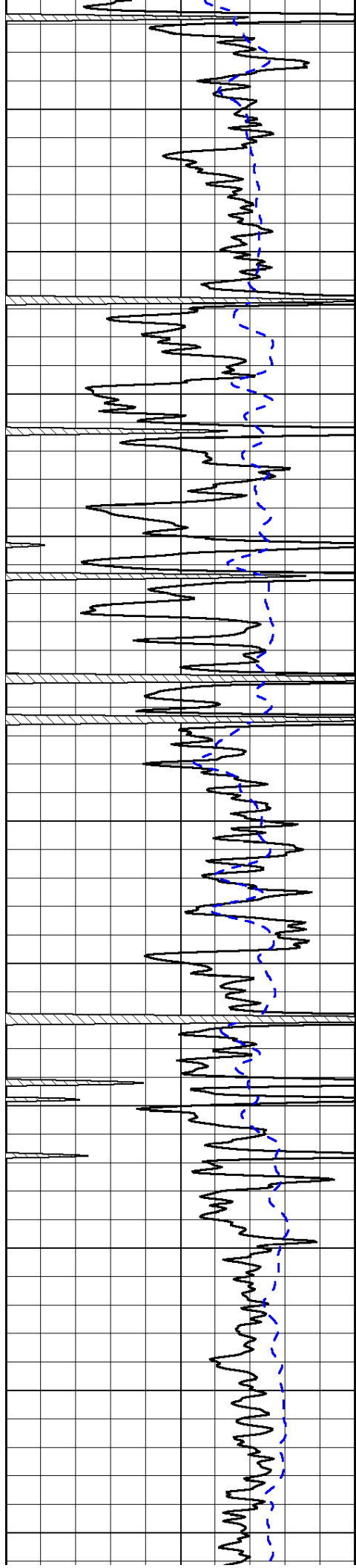
550 -77

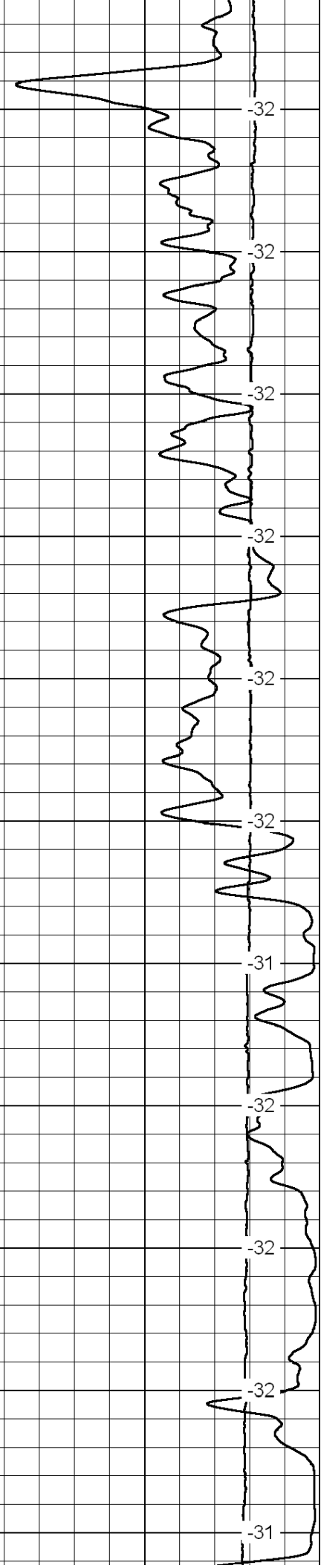
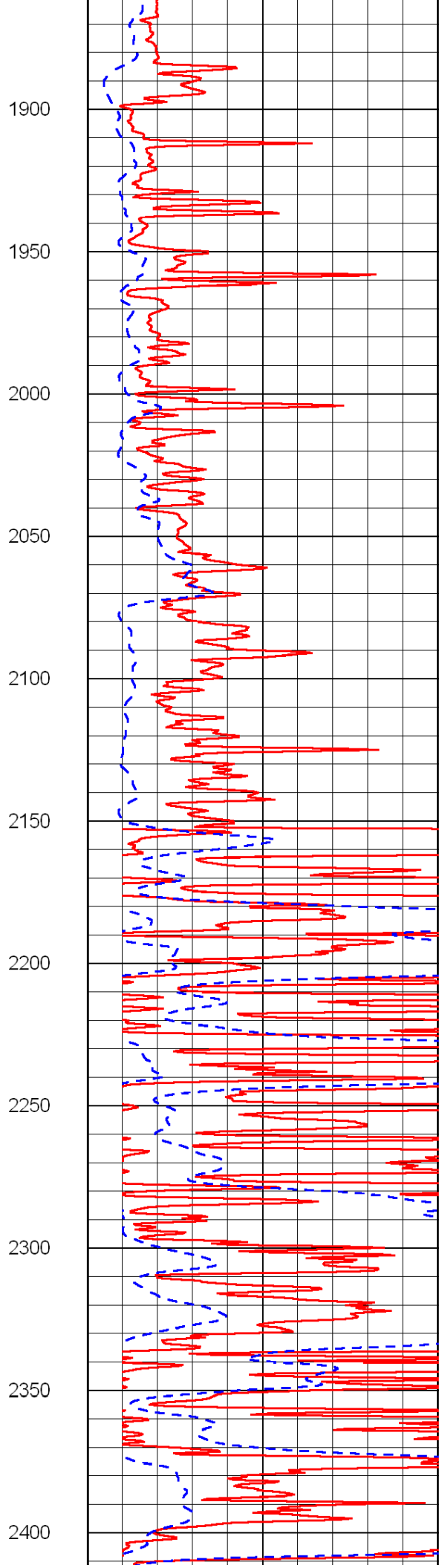
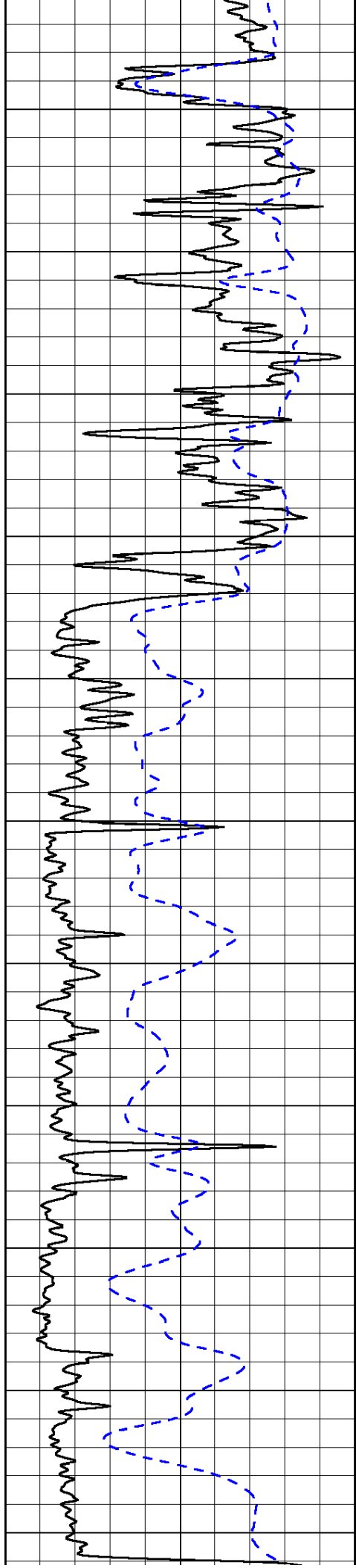
600 -77

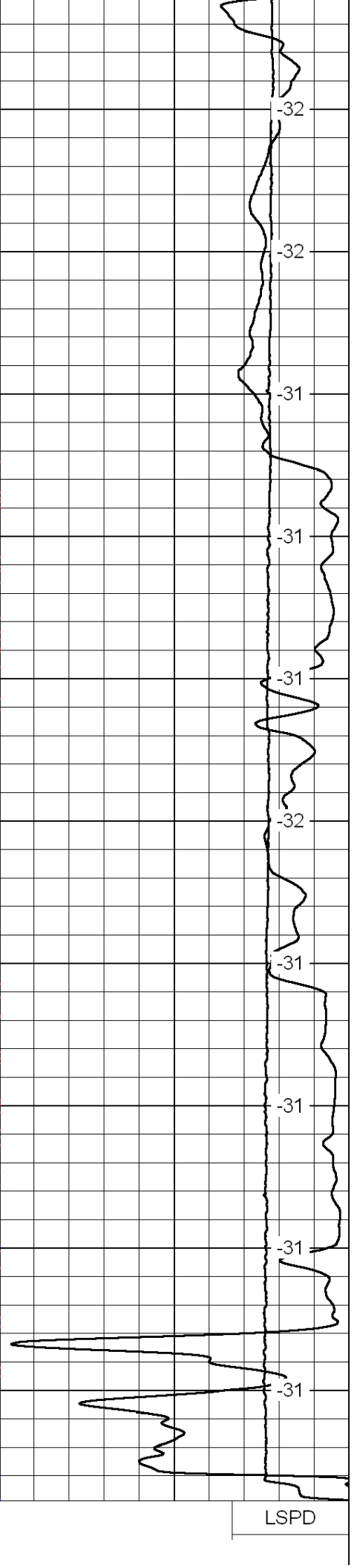
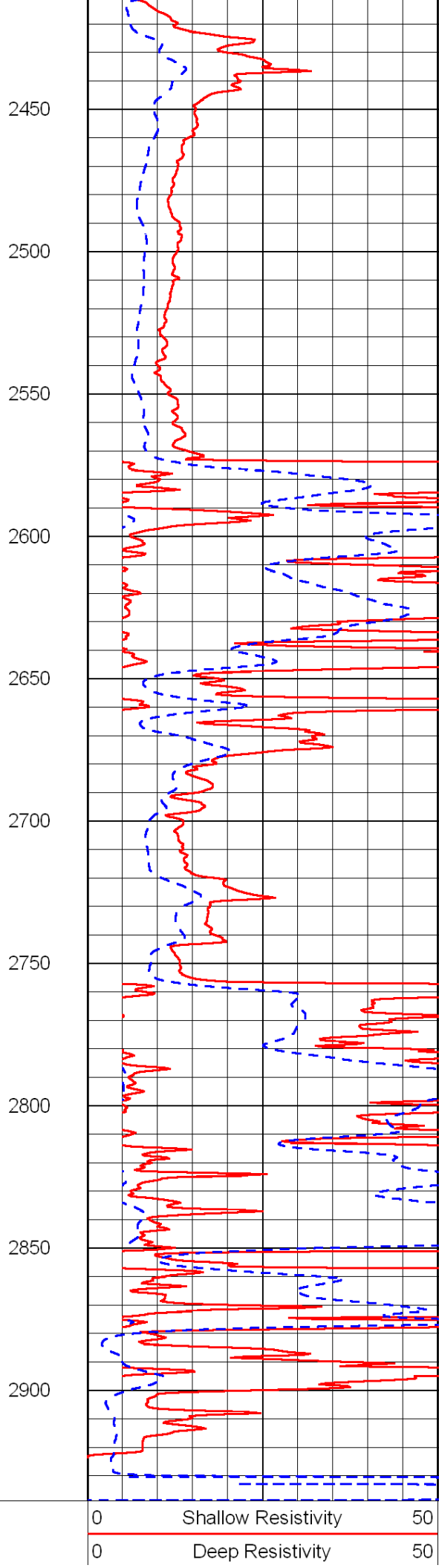
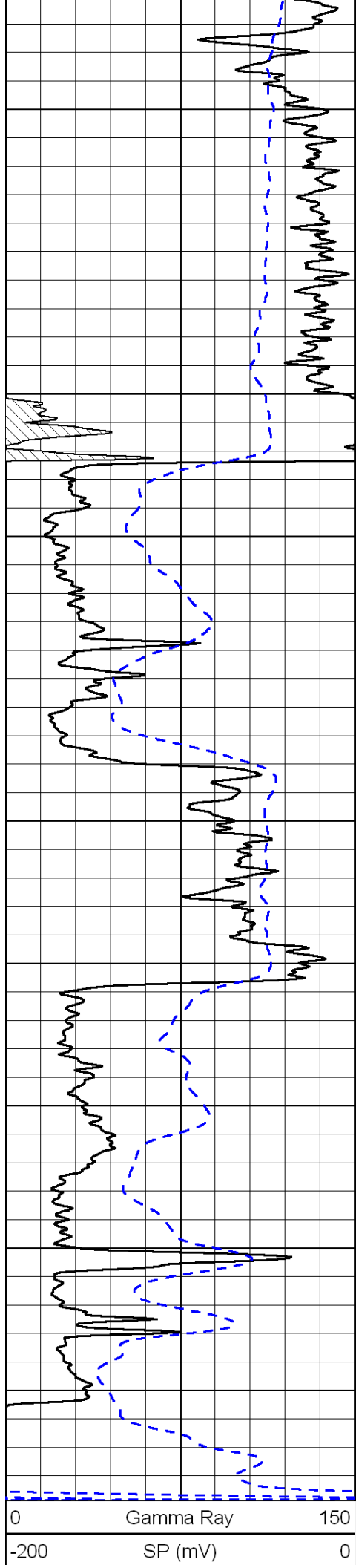
650 -77

700 -76

750 -75





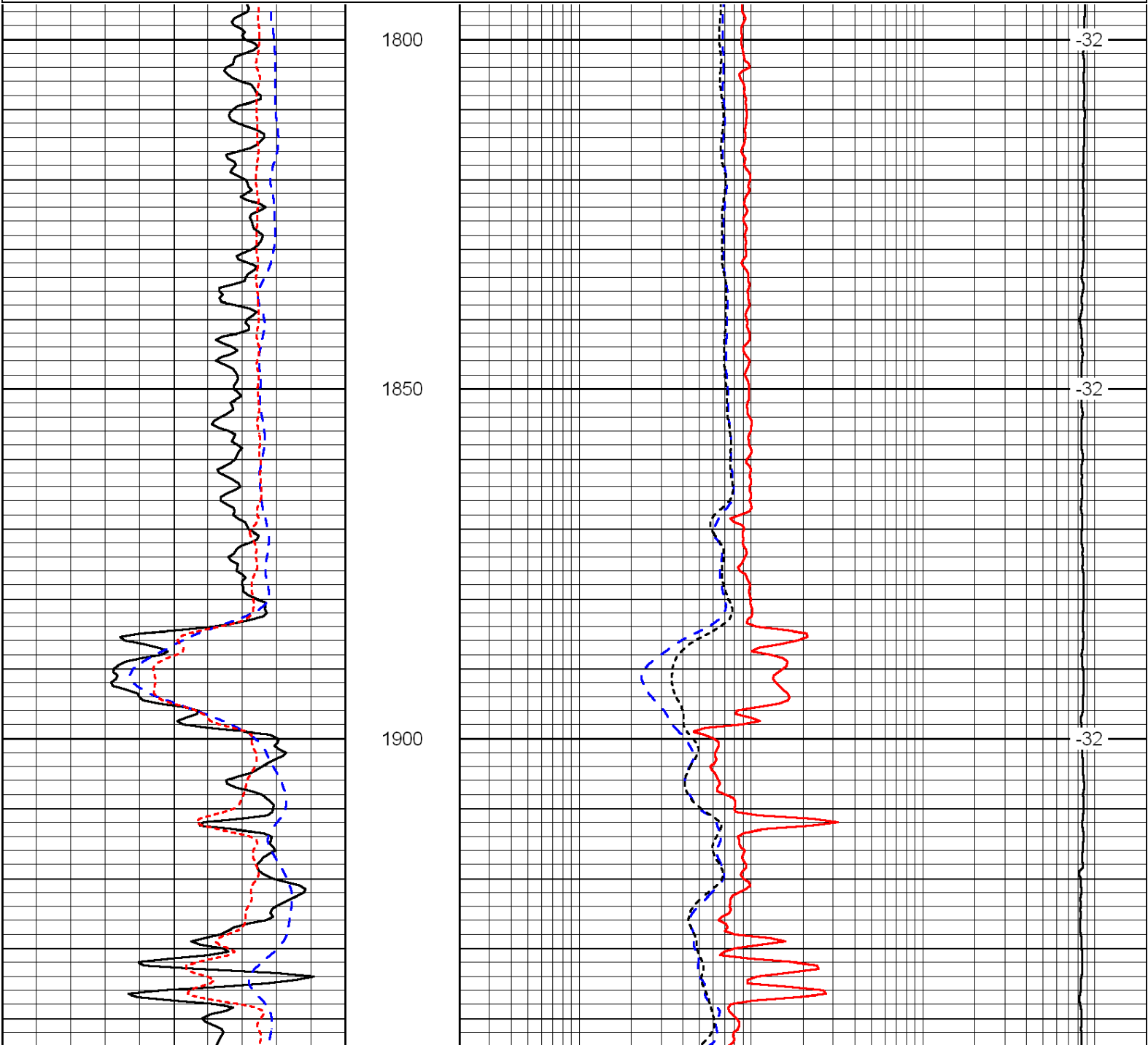


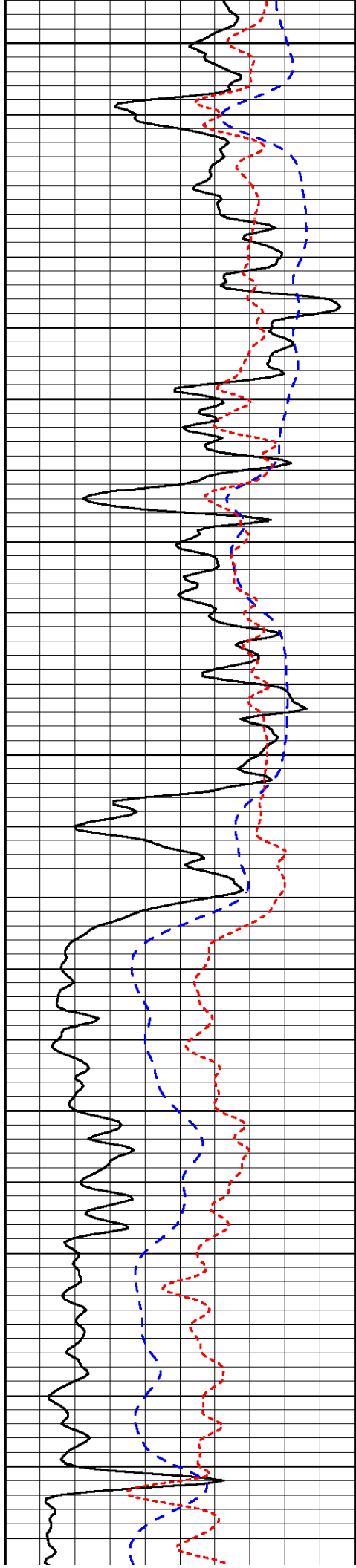
1000	Conductivity	0
15000	Line Tension	0
50	Shallow Resistivity	500
50	Deep Resistivity	500

Database File: c:\warrior\data\ld drilling_andrew wendland no.2\ldhd.db
 Dataset Pathname: dil\ldstk
 Presentation Format: dil
 Dataset Creation: Sun Mar 27 14:50:34 2011
 Charted by: Depth in Feet scaled 1:240

0	Gamma Ray	150	0.2	Deep Resistivity	2000
-200	SP (mV)	0	0.2	Medium Resistivity	2000
-160	Rxo / Rt	40	0.2	Shallow Resistivity	2000
			15000	Line Tension	0

LSPD





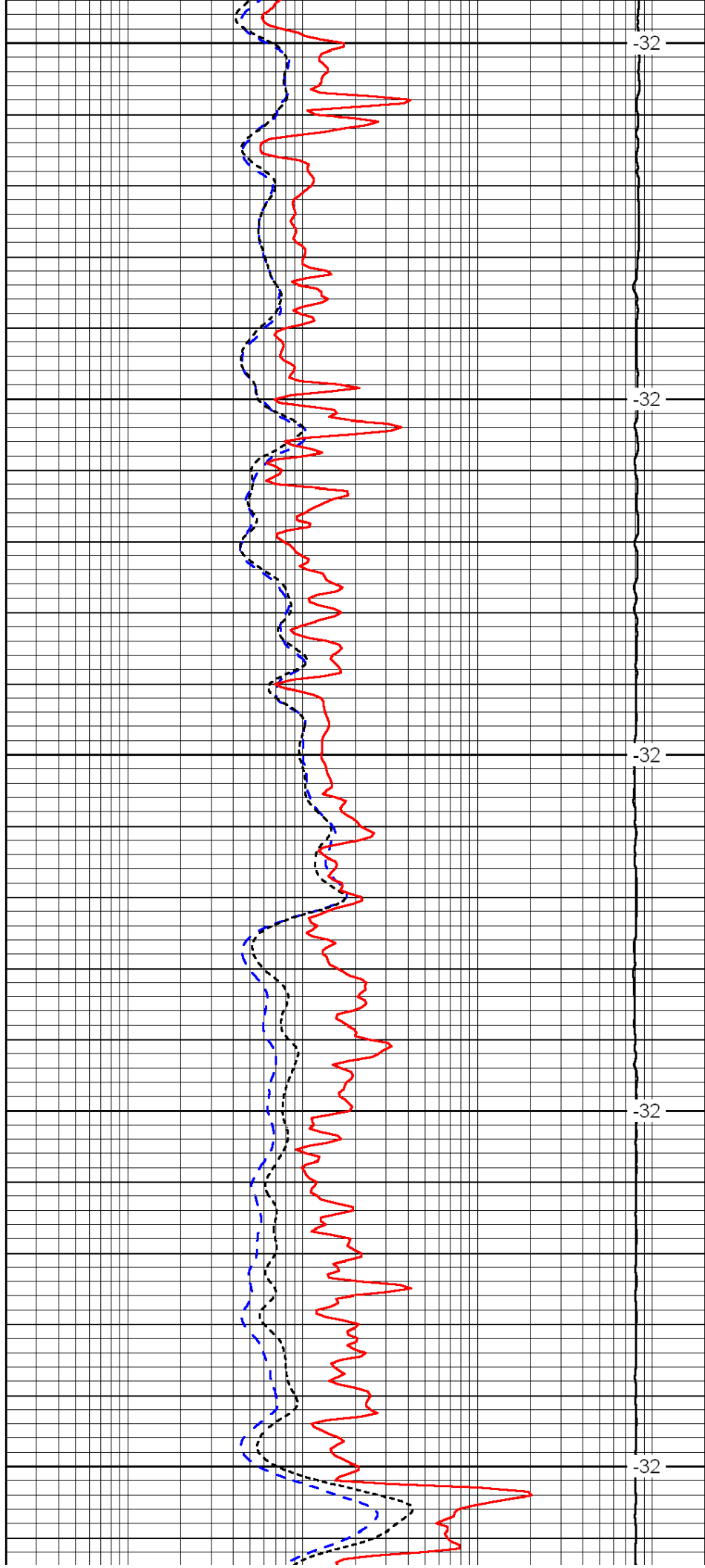
1950

2000

2050

2100

2150



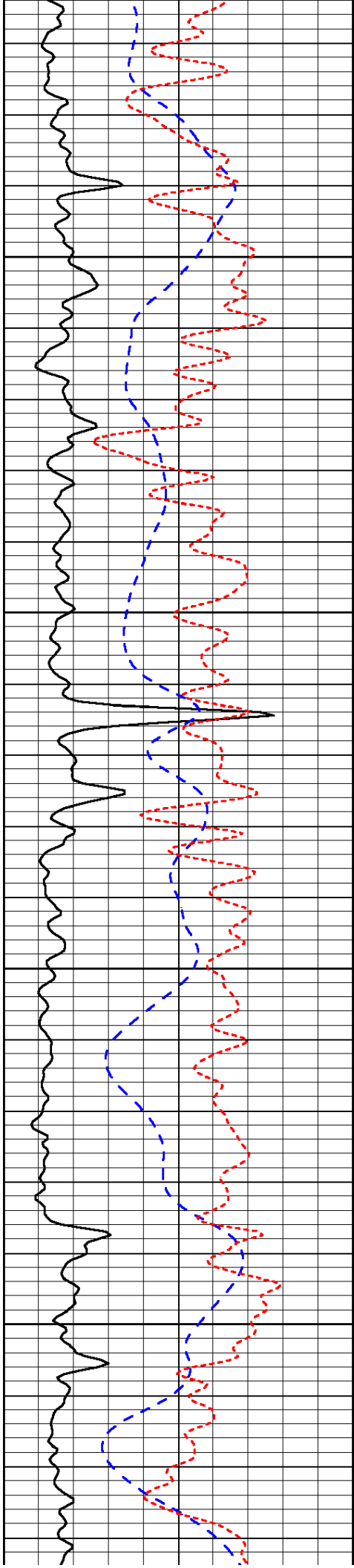
-32

-32

-32

-32

-32

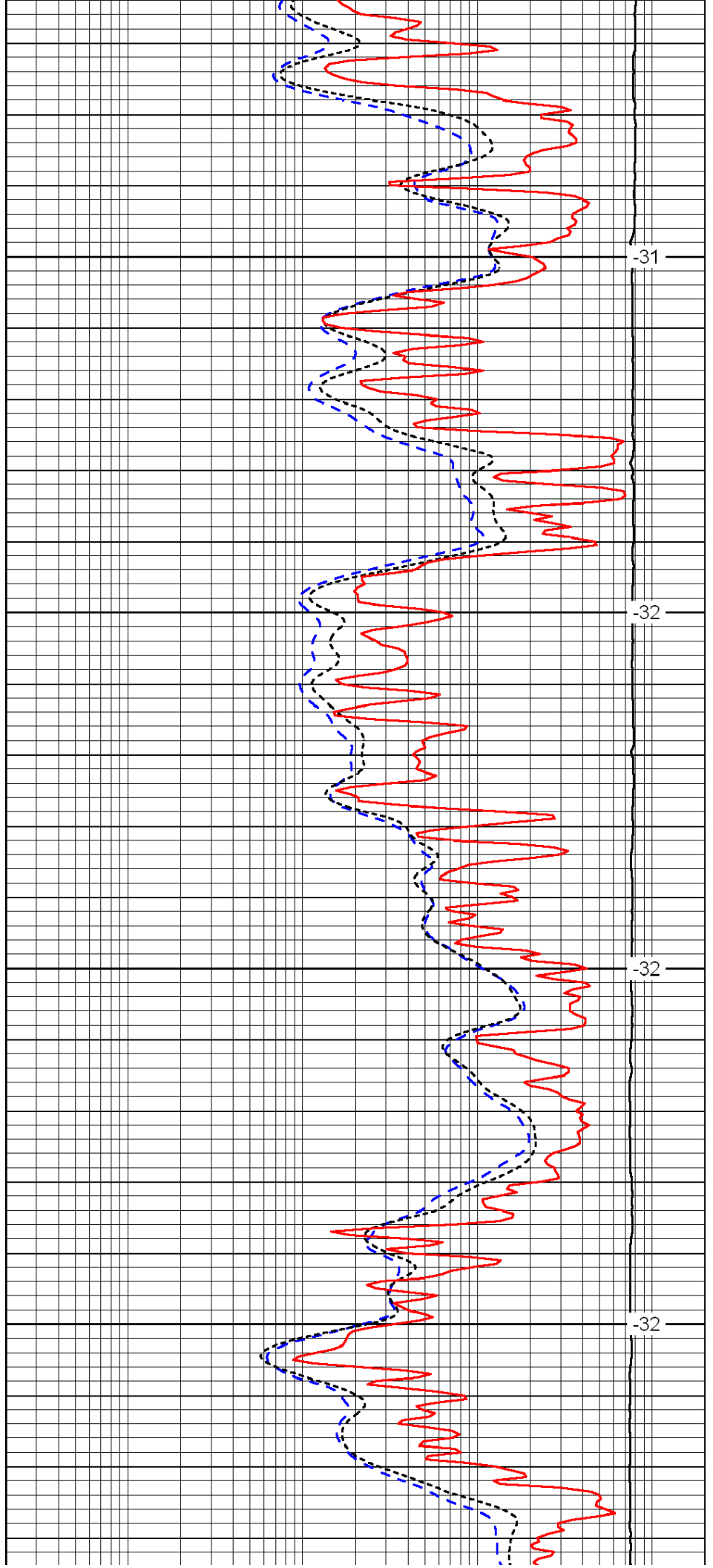


2200

2250

2300

2350

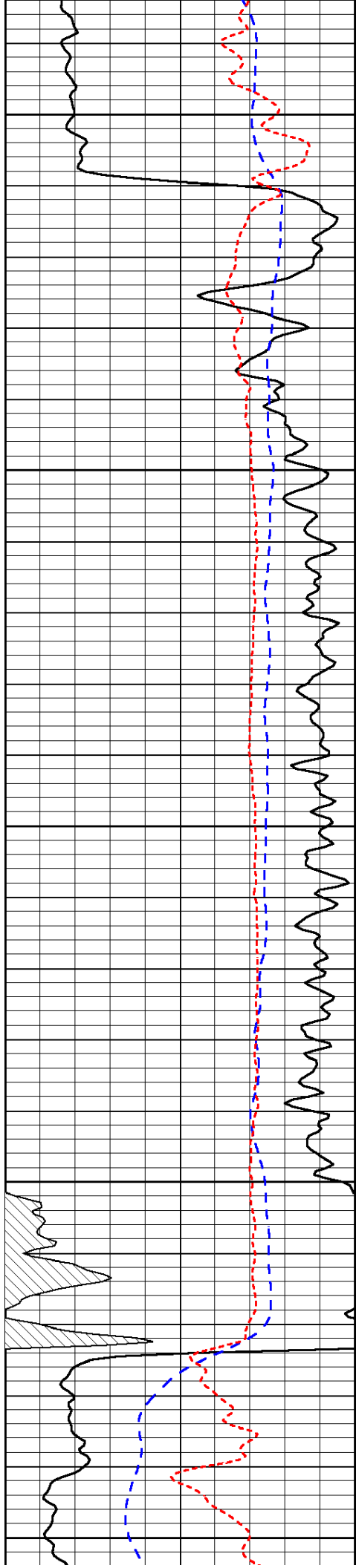


-31

-32

-32

-32



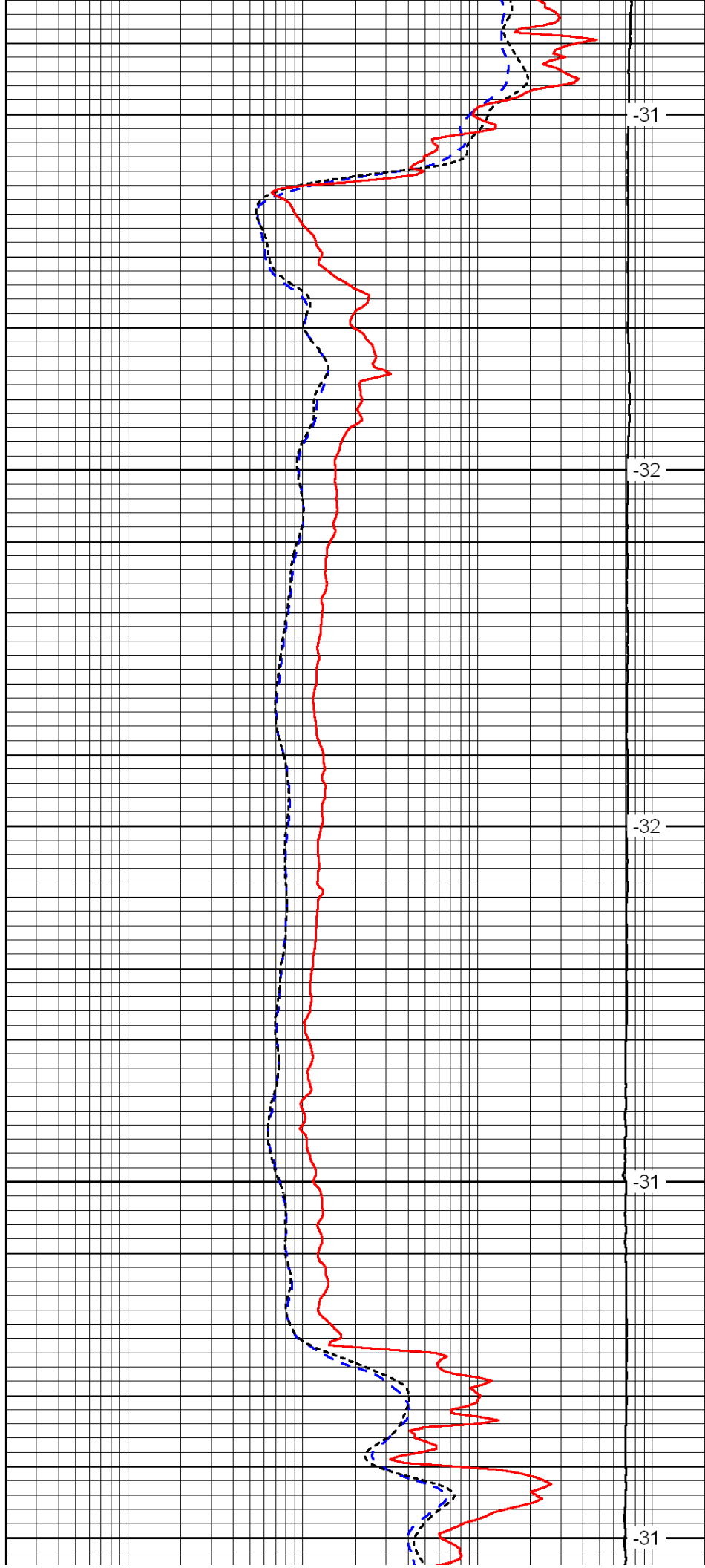
2400

2450

2500

2550

2600



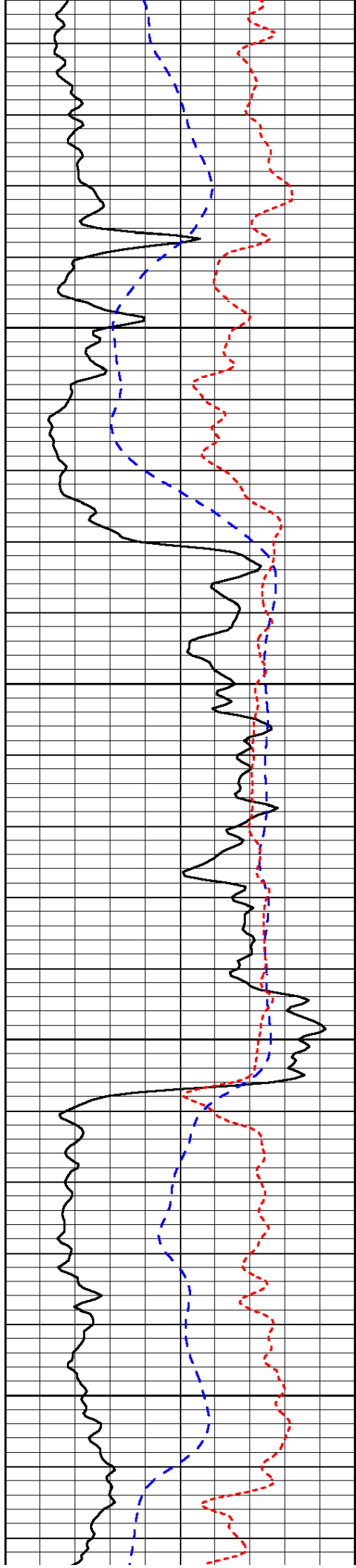
-31

-32

-32

-31

-31

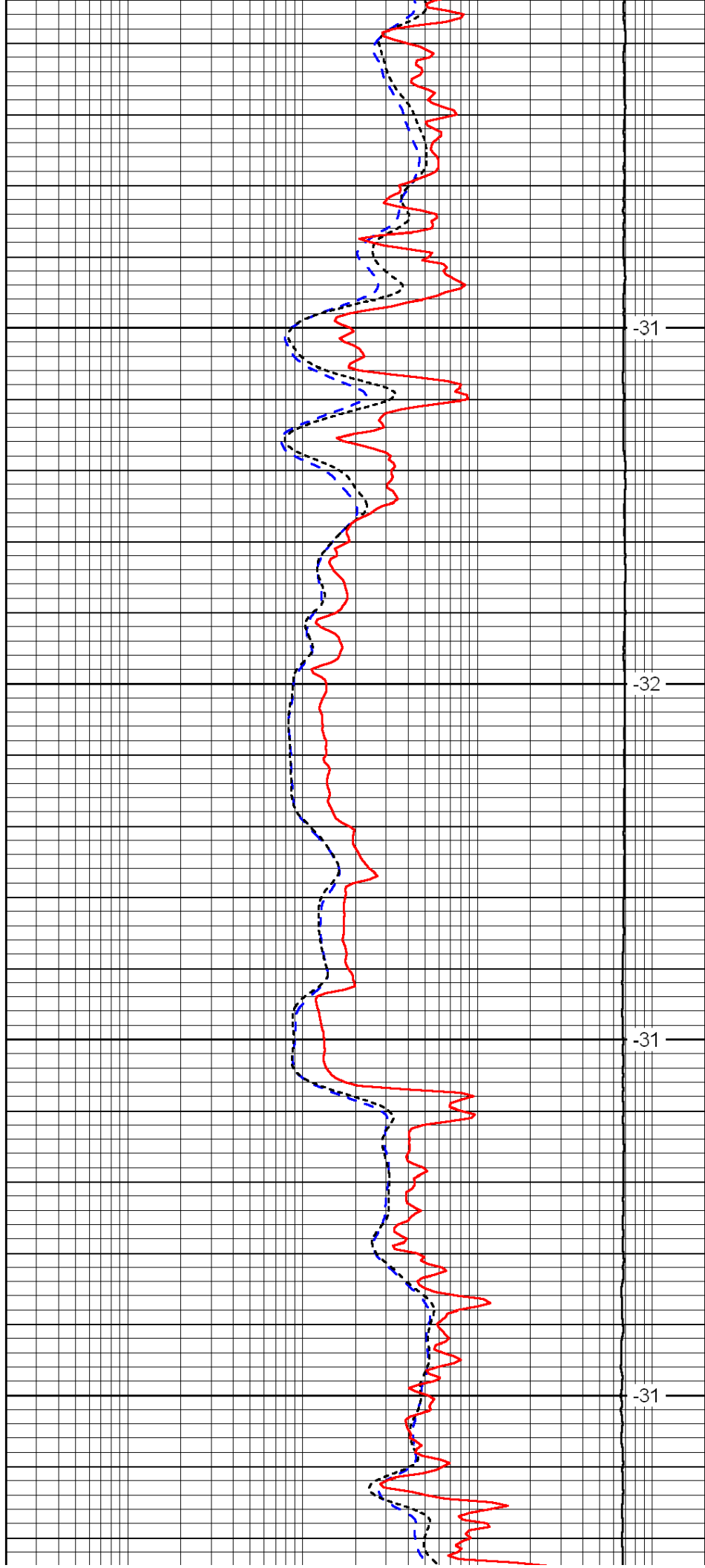


2650

2700

2750

2800

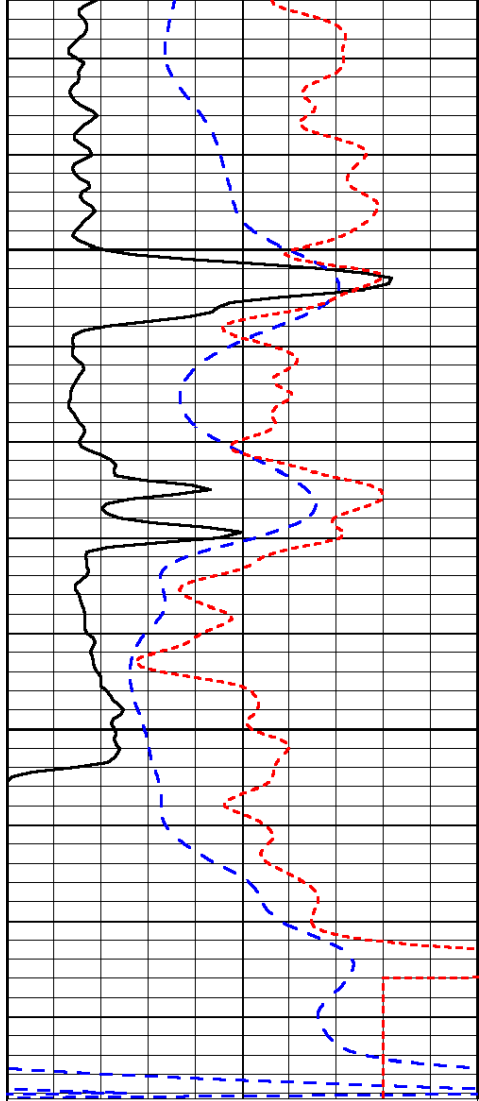


-31

-32

-31

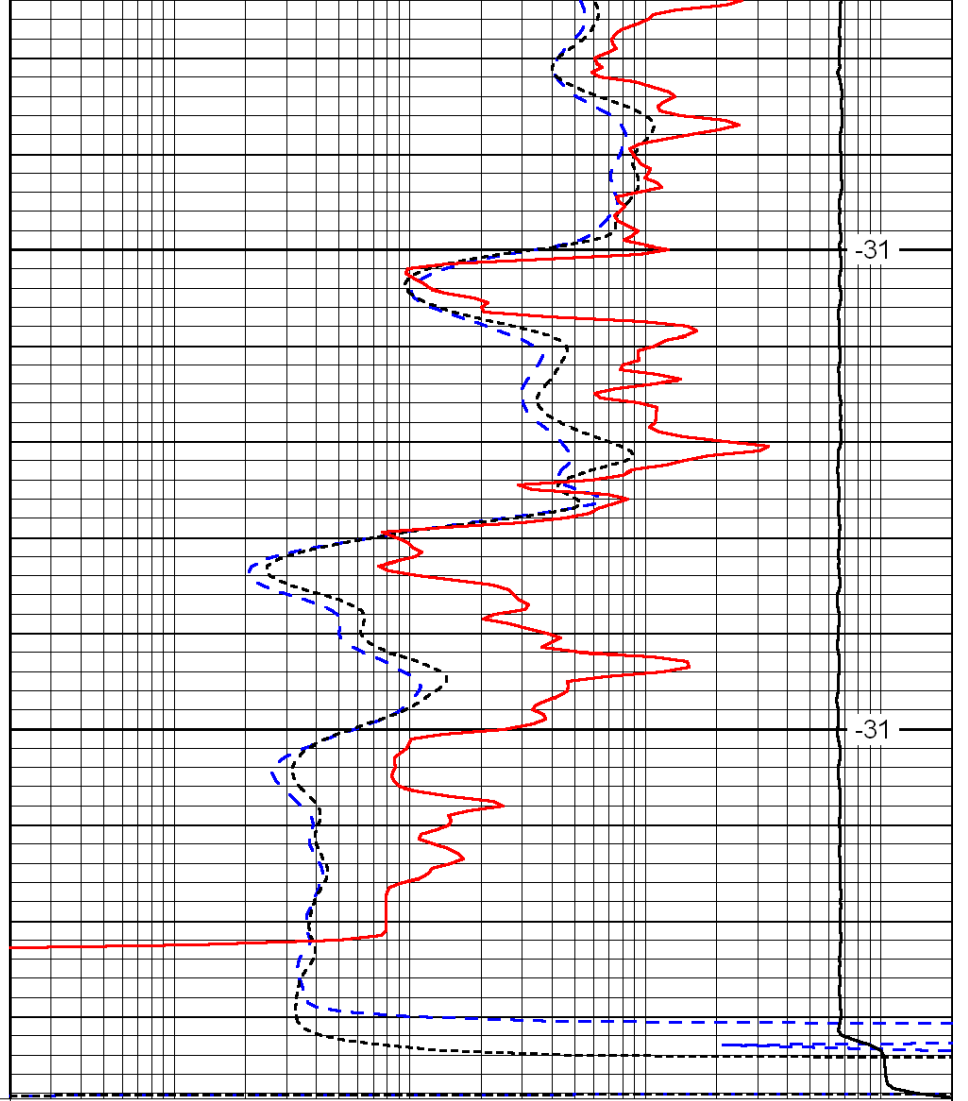
-31



0	Gamma Ray	150
-200	SP (mV)	0
-160	Rxo / Rt	40

2850

2900



-31

-31

0.2	Deep Resistivity	2000
0.2	Medium Resistivity	2000
0.2	Shallow Resistivity	2000
15000	Line Tension	0

LSPD