



DIGITAL LOG (785) 625-3858

Borehole Compensated
Sonic Log

API No. 15-197-20,288-00-00

Company L.D. Drilling, Inc.
Well Andrew Wendland No.2
Field

County Wabaunsee State Kansas

Location SE NE NE
990' FNL & 330' FEL

Sec: 4 Twp: 13S Rge: 13E

Other Services
CNL/CDL
MEL/DIL

Permanent Datum Ground Level Elevation 1035
Log Measured From Ground Level 0 Ft. Above Perm. Datum
Drilling Measured From Ground Level

K.B. Elevation
D.F. 1035
G.L. 1035

Date	3/24/2011	
Run Number	Two	
Type Log	BHC Sonic	
Depth Driller	2926	
Depth Logger	2933	
Bottom Logged Interval	2922	
Top Logged Interval	275	
Type Fluid In Hole	Chemical	
Salinity, PPM CL	2,400	
Density	8.8	
Level	Full	
Max. Rec. Temp. F	107	
Operating Rig Time	3 1/2 Hours	
Equipment -- Location	17 Hays	
Recorded By	C. Desaire	
Witnessed By	George Petersen	

Borehole Record			Casing Record				
Run No.	Bit	From	To	Size	Wgt.	From	To
1	12.25	00	300	8.625	24#	00	300
2	7.875	300	2926				

<<< Fold Here >>>

All interpretations are opinions based on inferences from electrical or other measurements and we cannot and do not guarantee the accuracy or correctness of any interpretation, and we shall not, except in the case of gross or willful negligence on our part, be liable or responsible for any loss, costs, damages, or expenses incurred or sustained by anyone resulting from any interpretation made by any of our officers, agents or employees. These interpretations are also subject to our general terms and conditions set out in our current Price Schedule.

Comments

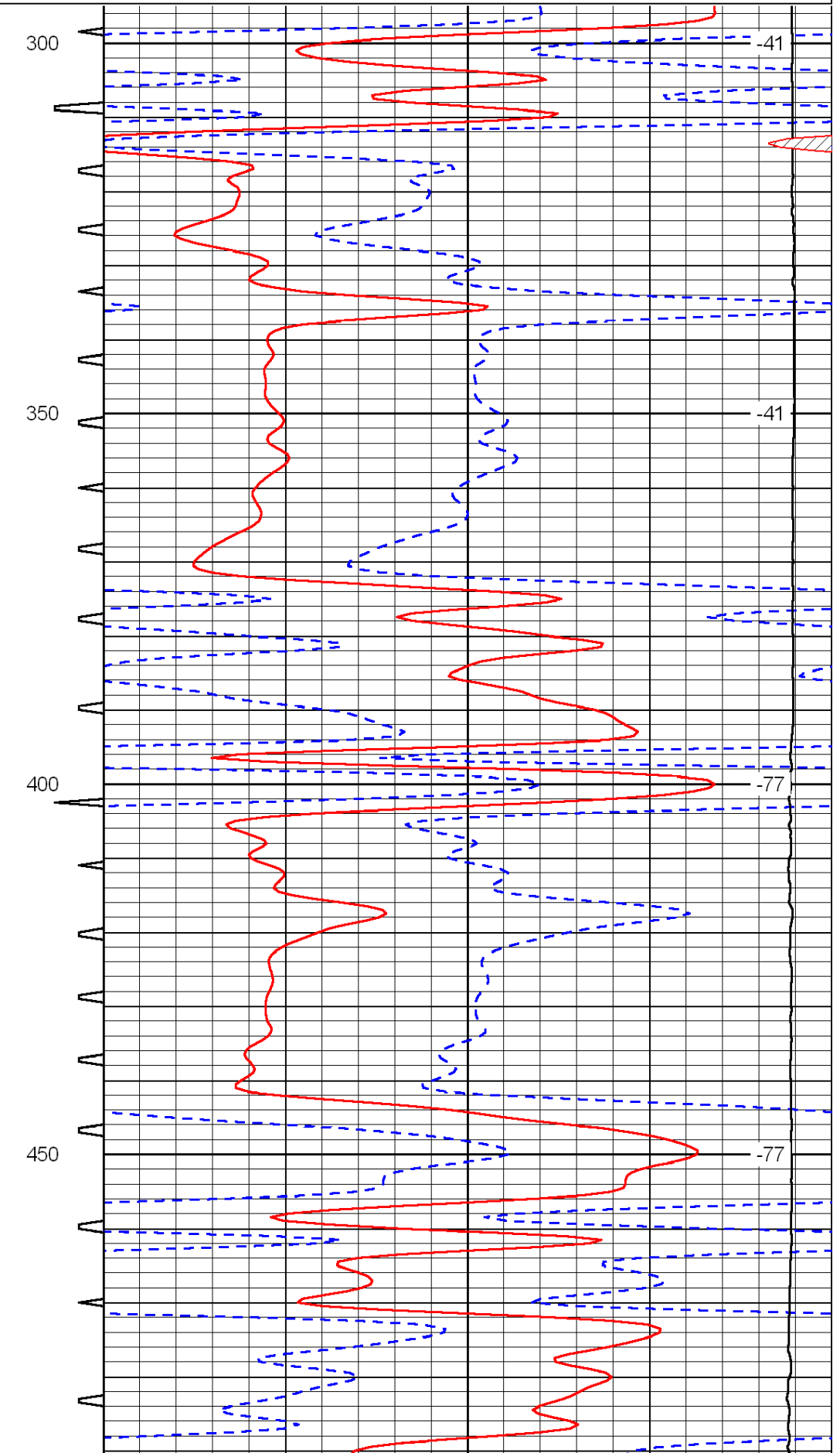
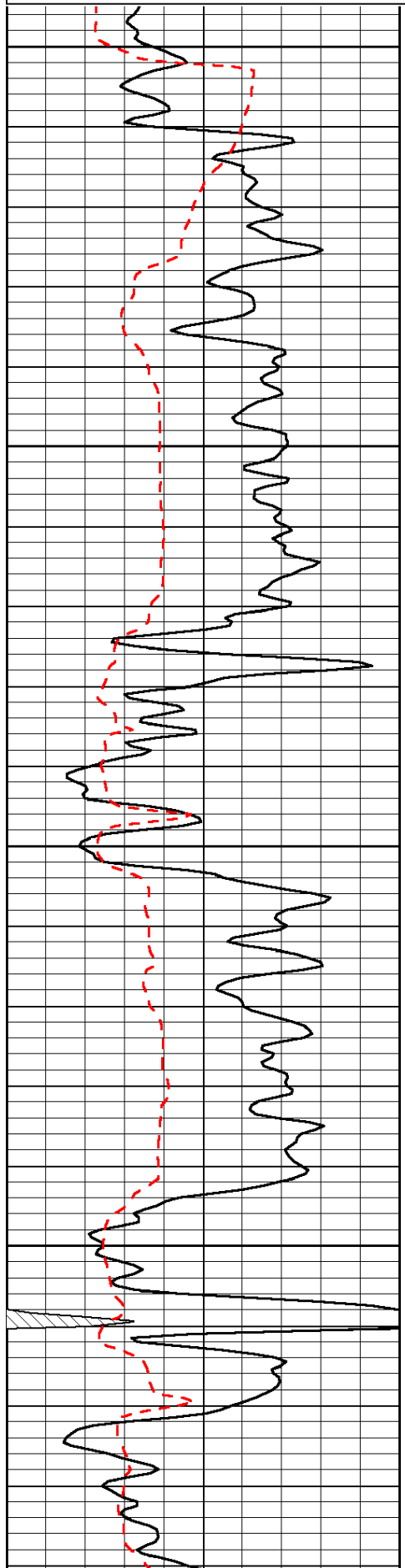
Thank you for using Log-Tech, Inc.
(785) 625-3858

Dover, 2 W, 1/4 S, W Into

Database File: c:\warrior\data\ld drilling_andrew wendland no.2\ldhd.db
 Dataset Pathname: dil\dstk
 Presentation Format: sonic
 Dataset Creation: Sun Mar 27 14:50:34 2011
 Charted by: Depth in Feet scaled 1:240

0	Gamma Ray	150	Sonic Int	140	Delta Time (usec/ft)	40
150	Gamma Ray	300	5	0	SPOR	-10
6	Caliper (GAPI)	16		15000	LTEN (lb)	0

LSPD



300

350

400

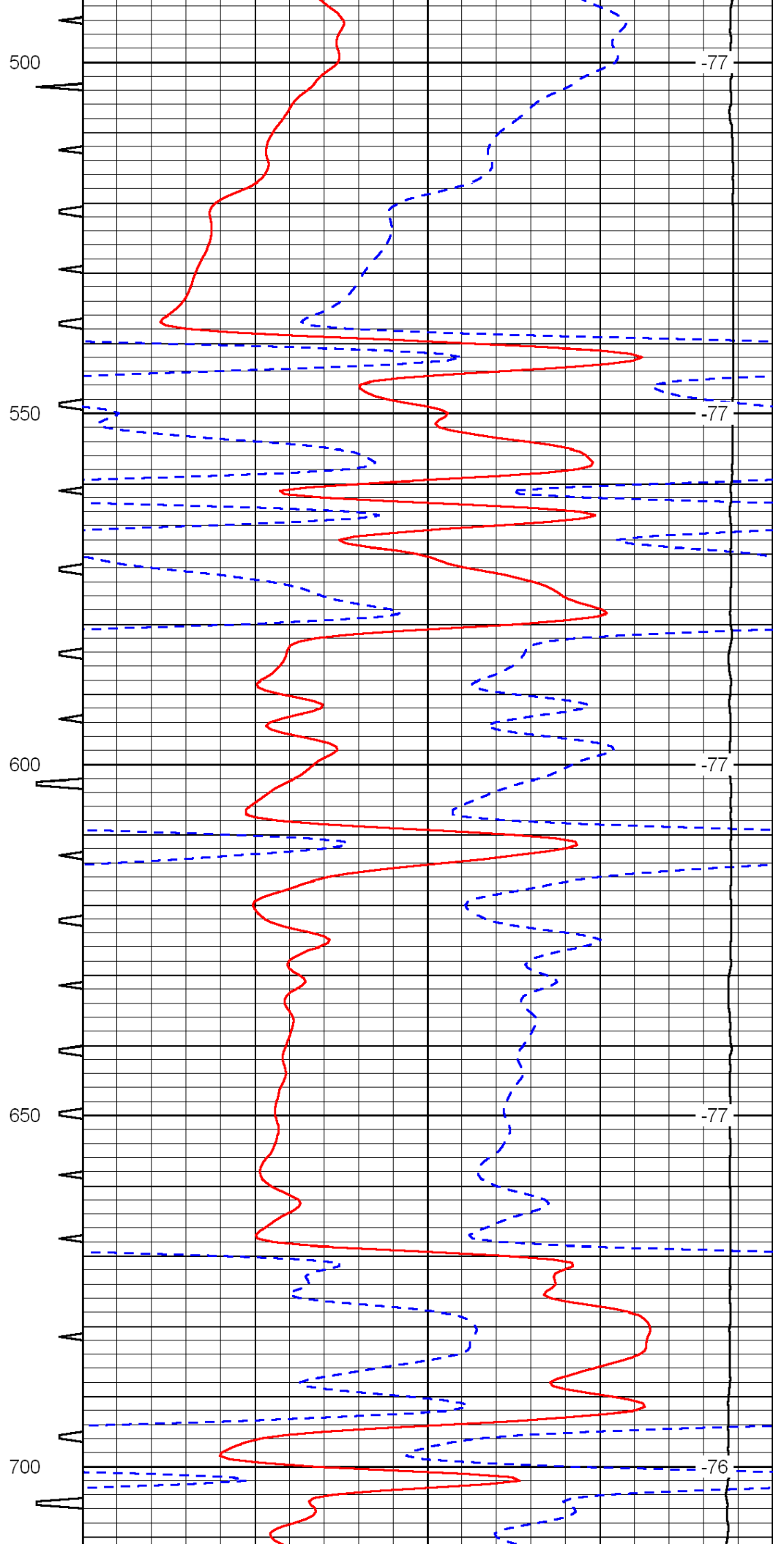
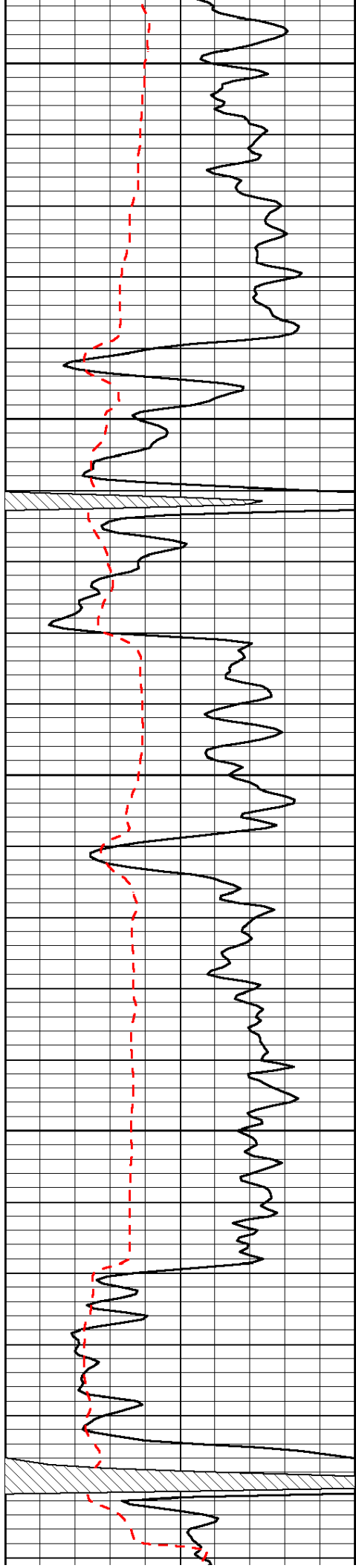
450

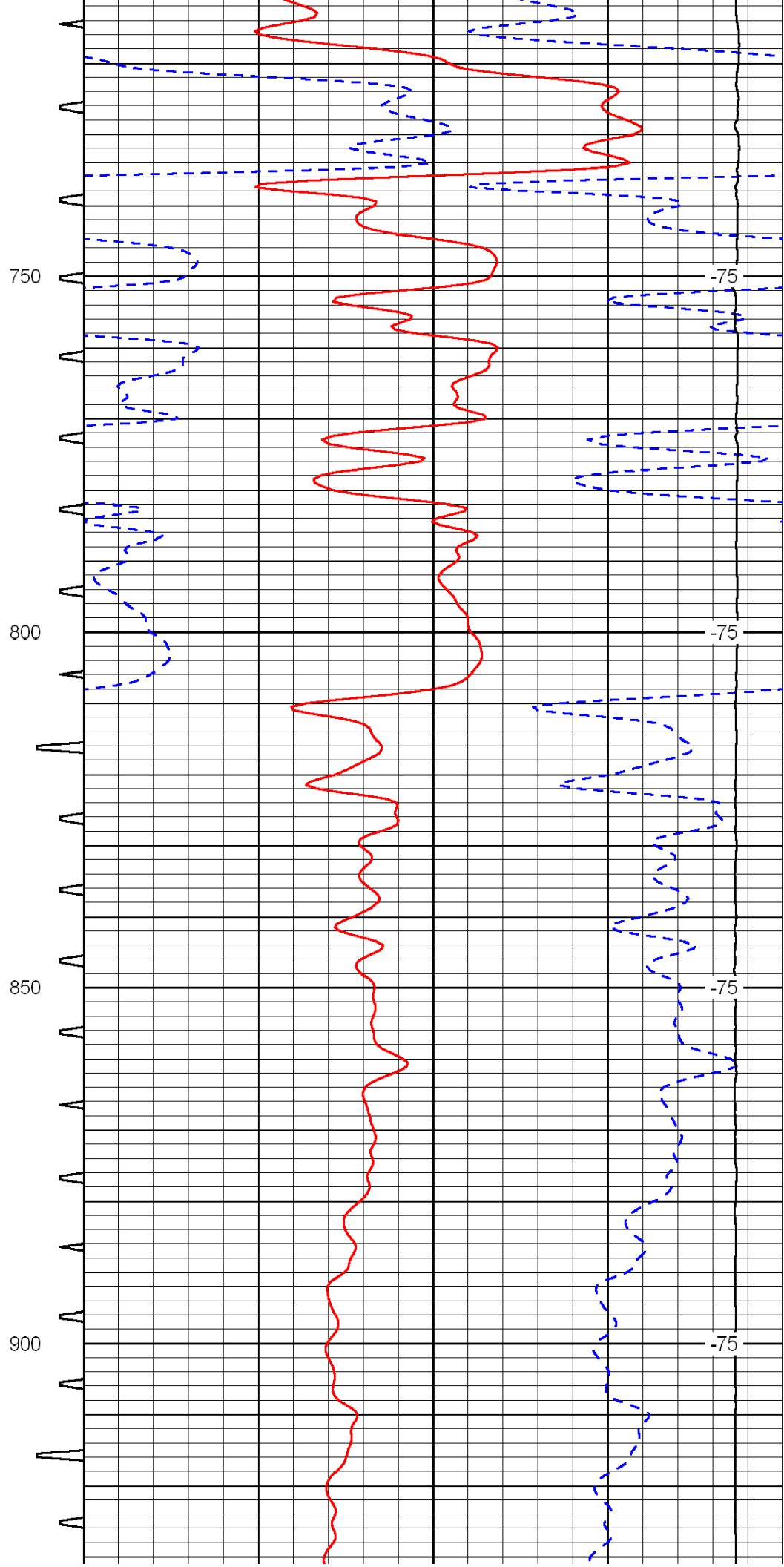
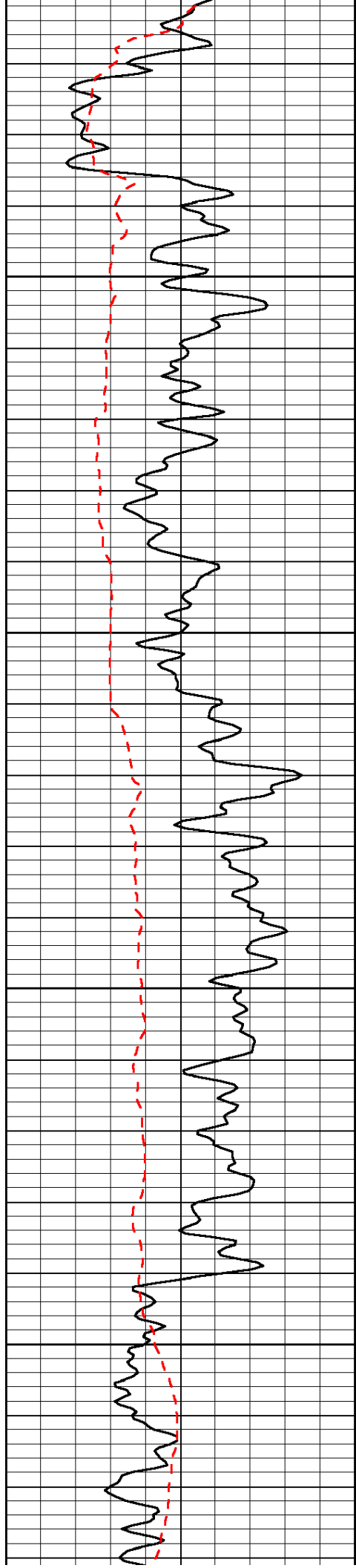
-41

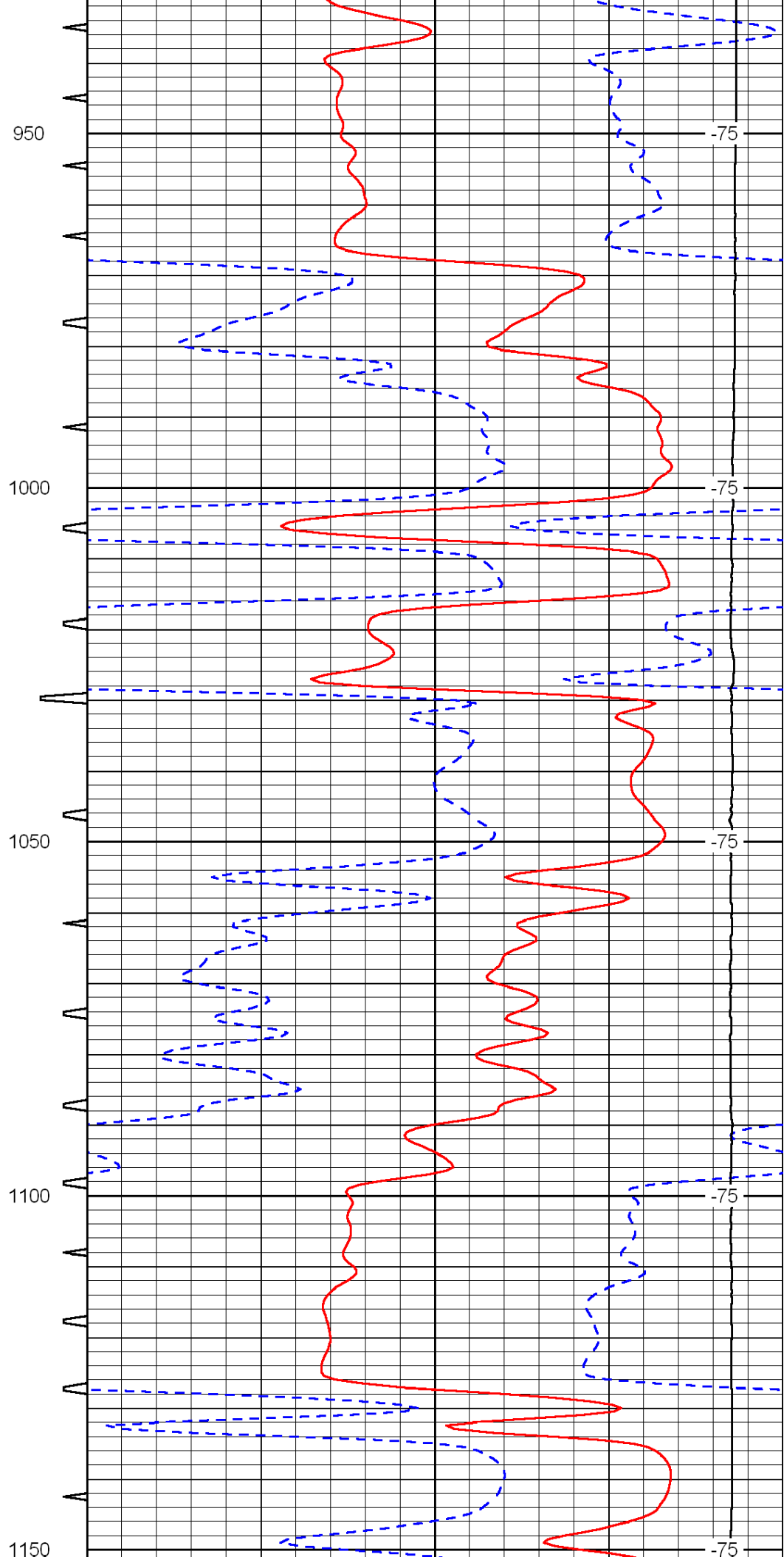
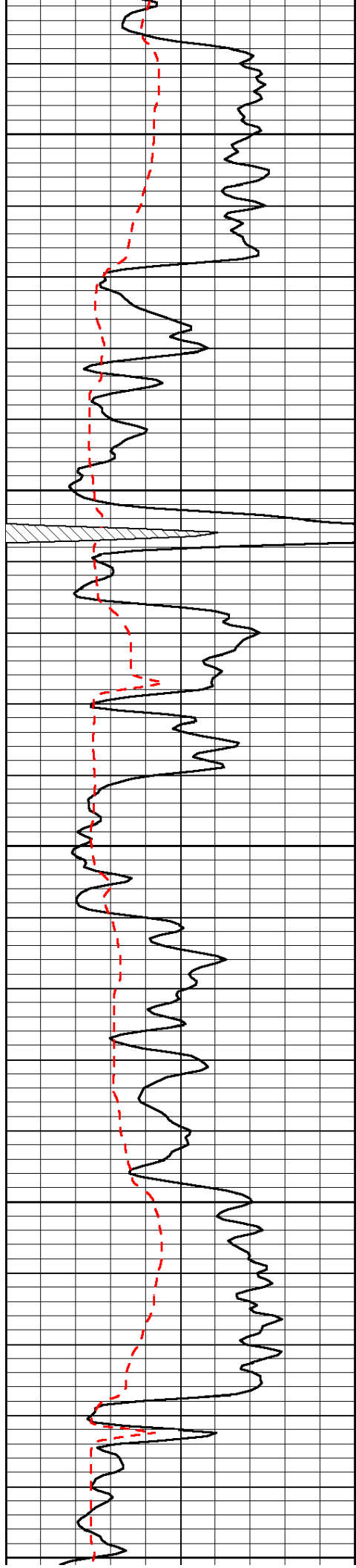
-41

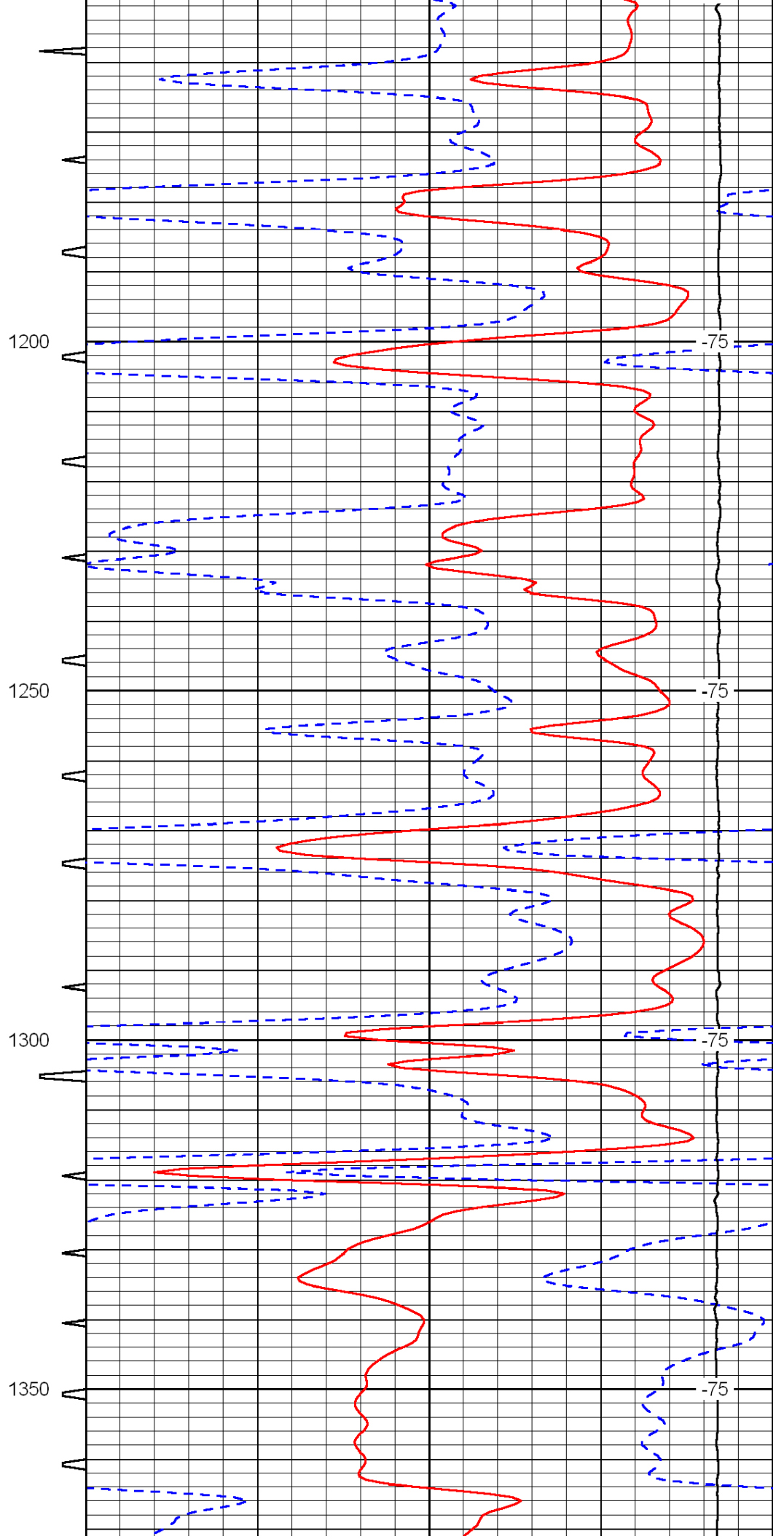
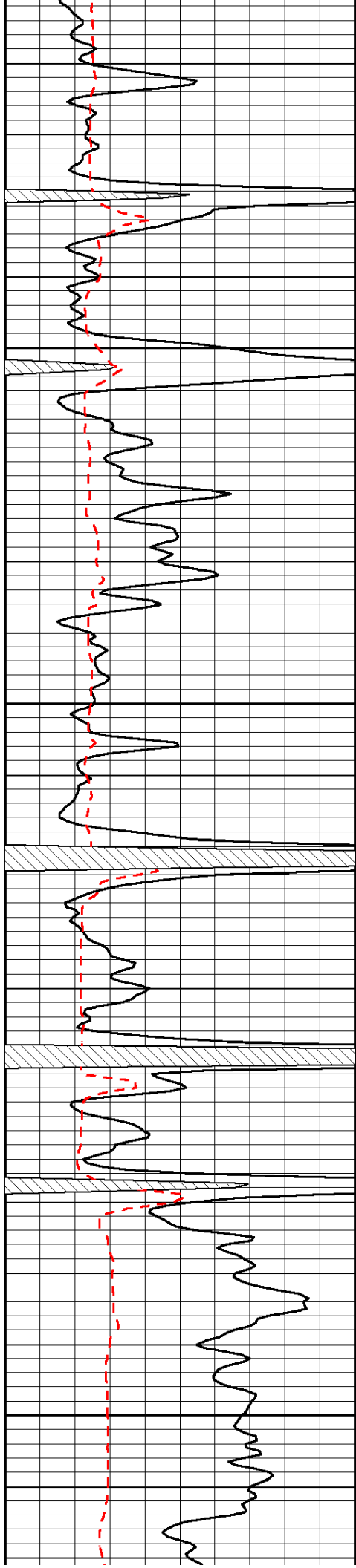
-77

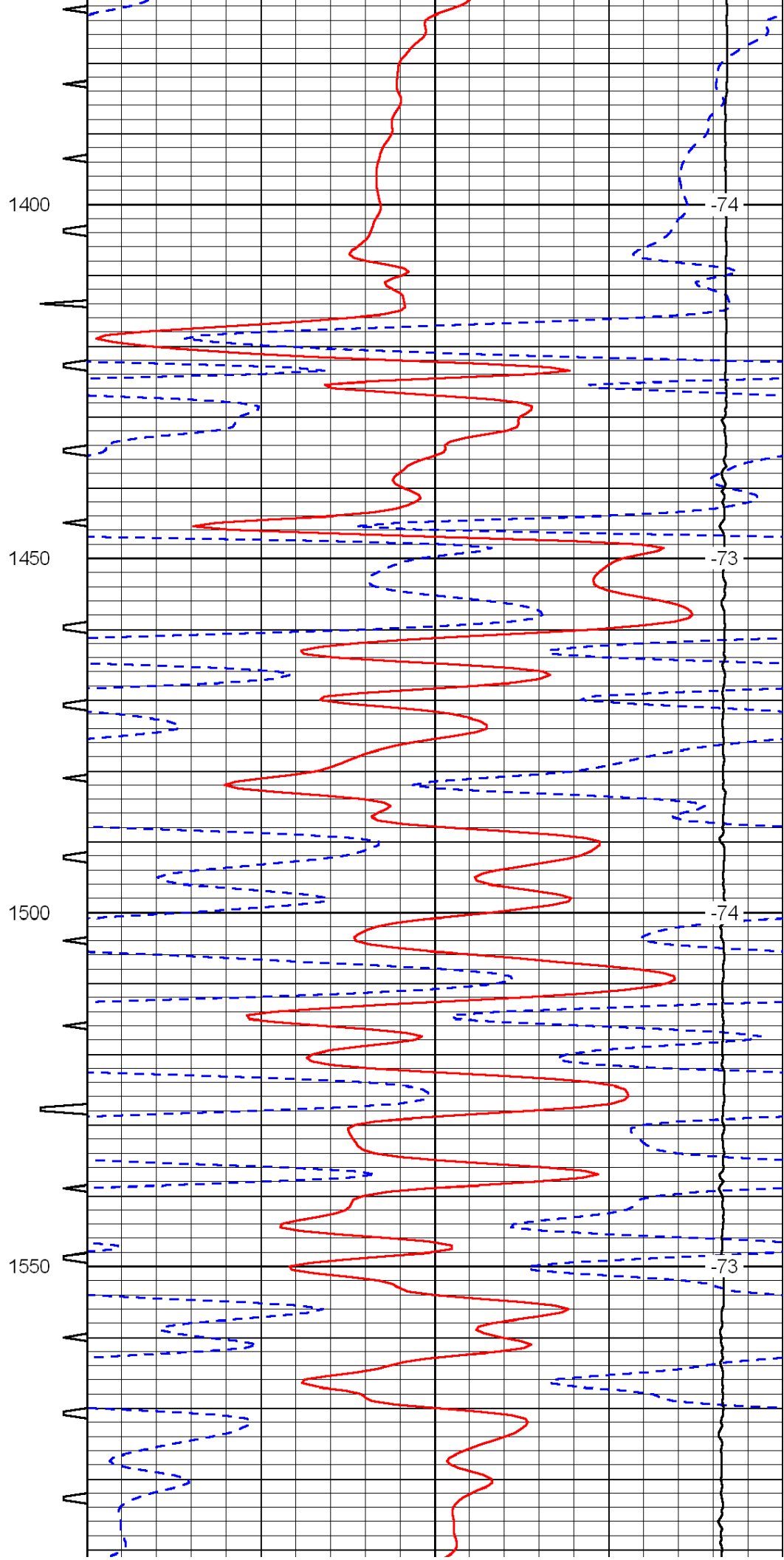
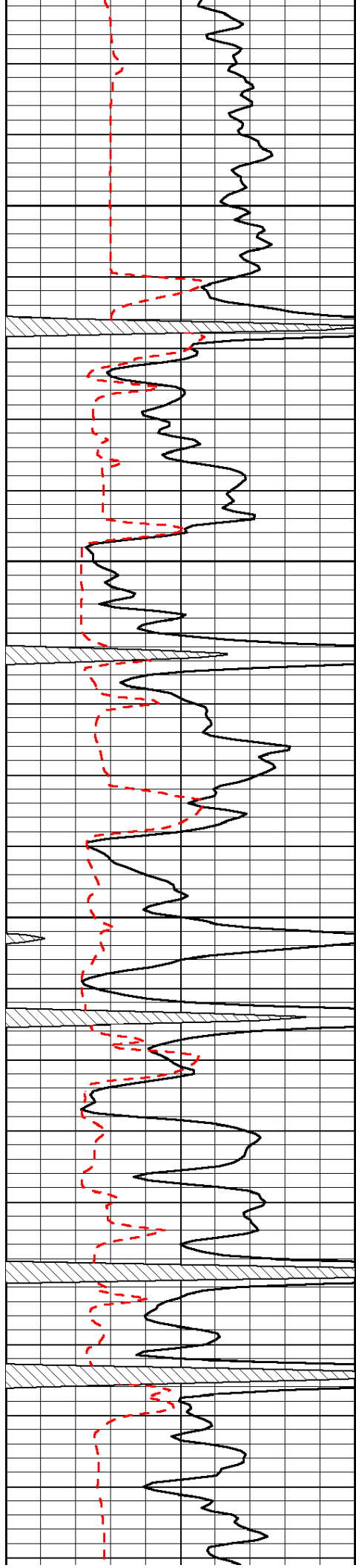
-77

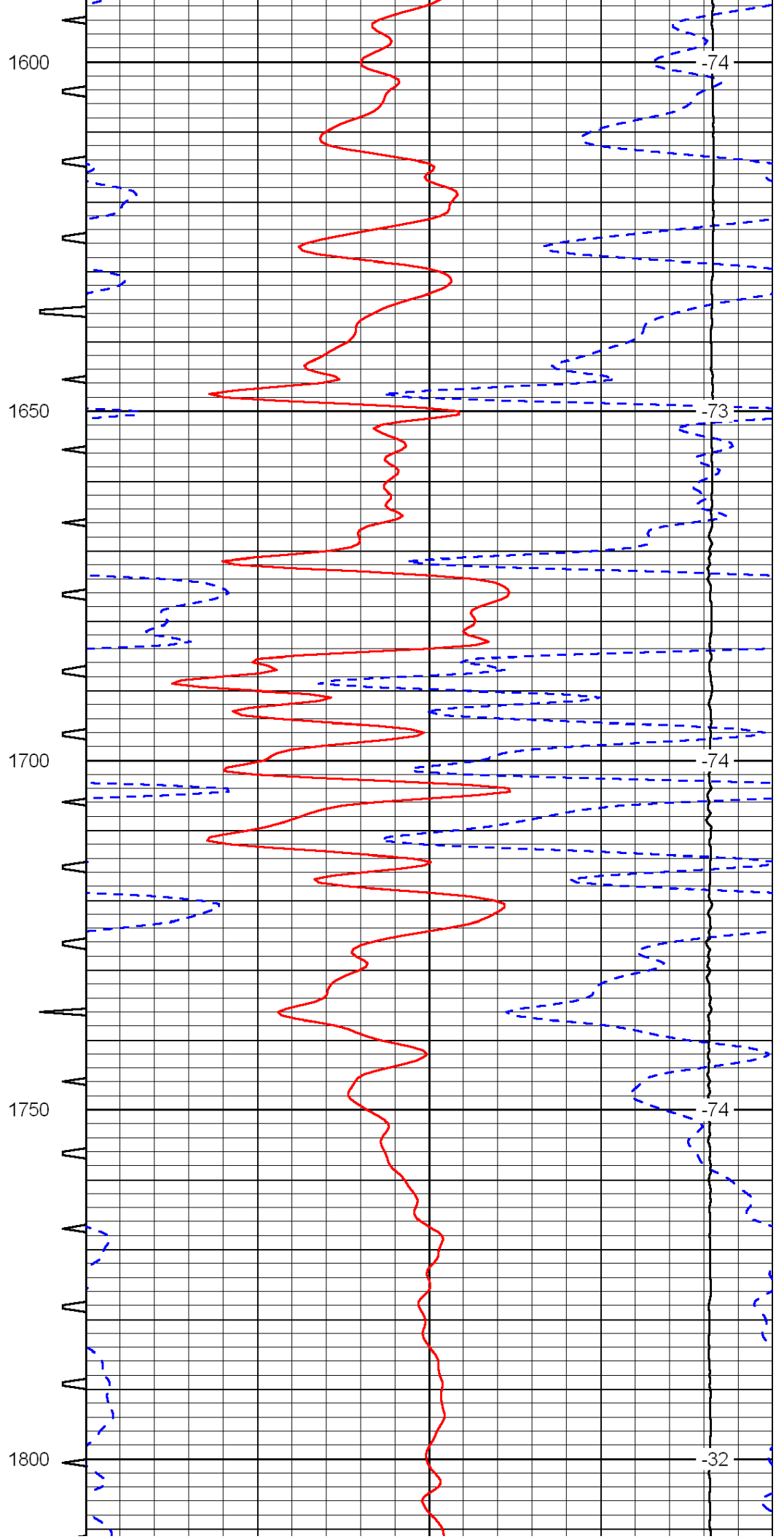
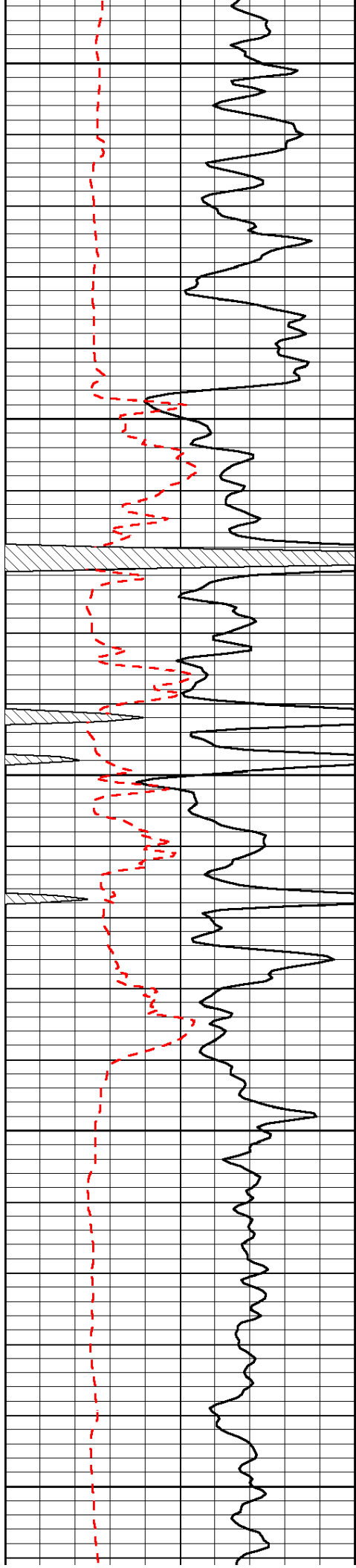


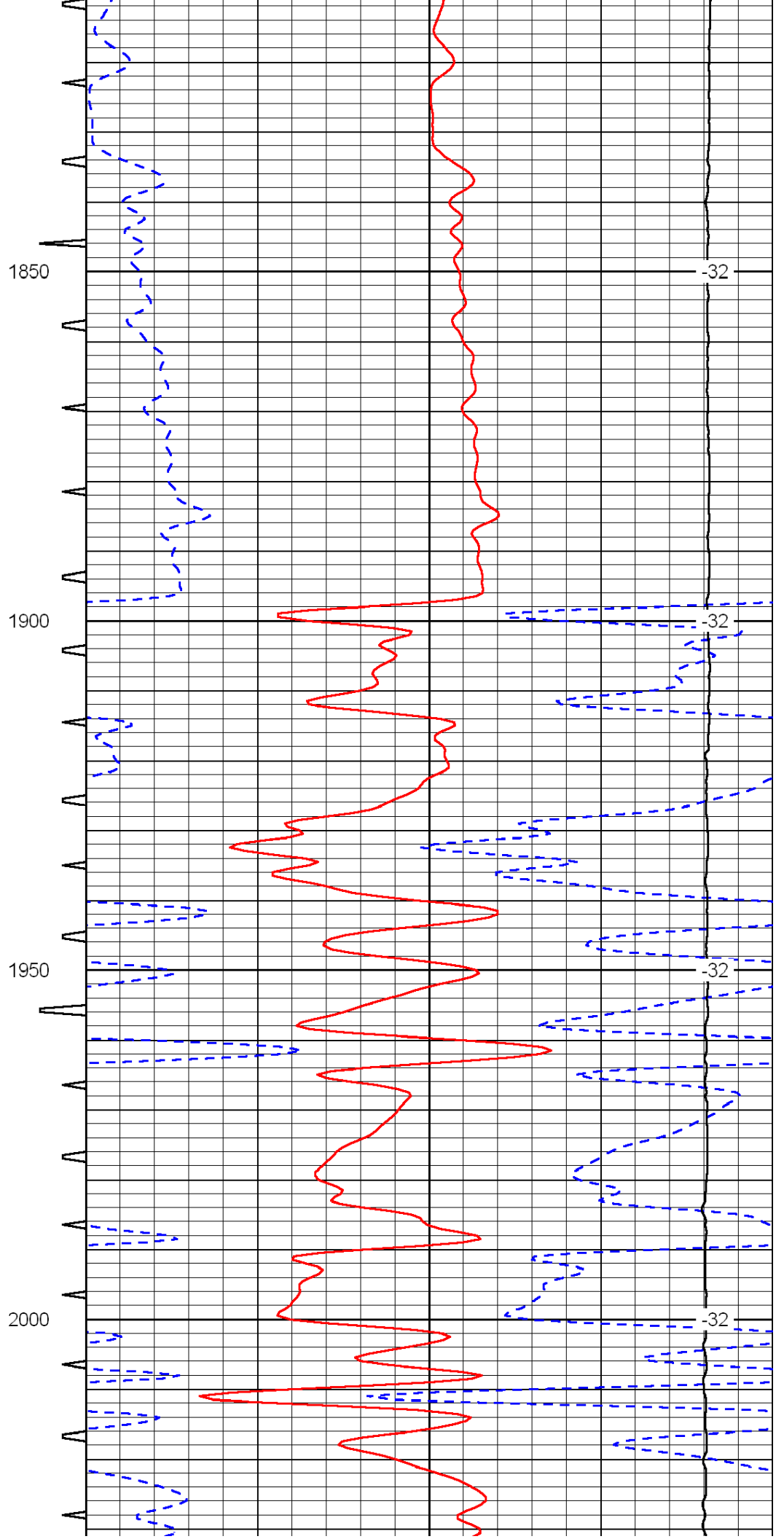
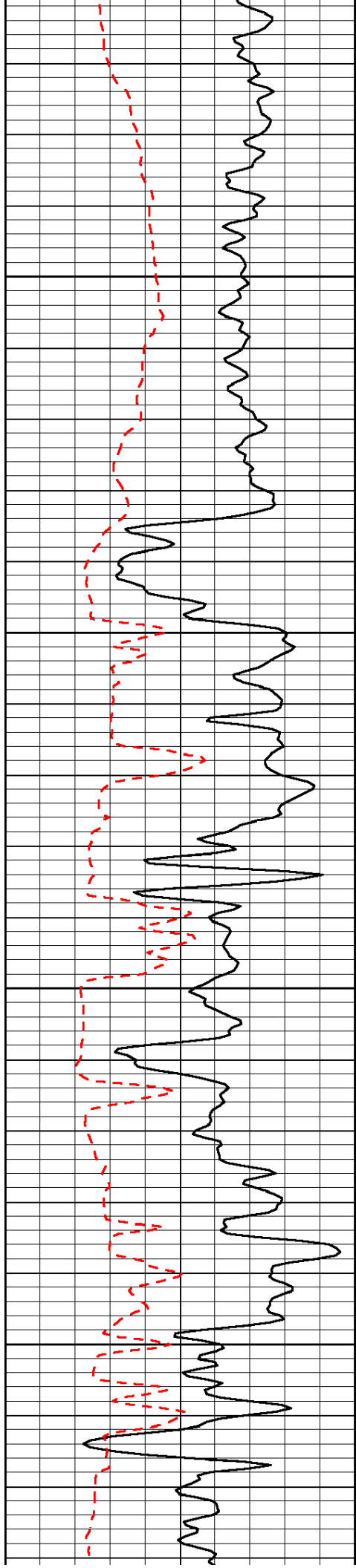


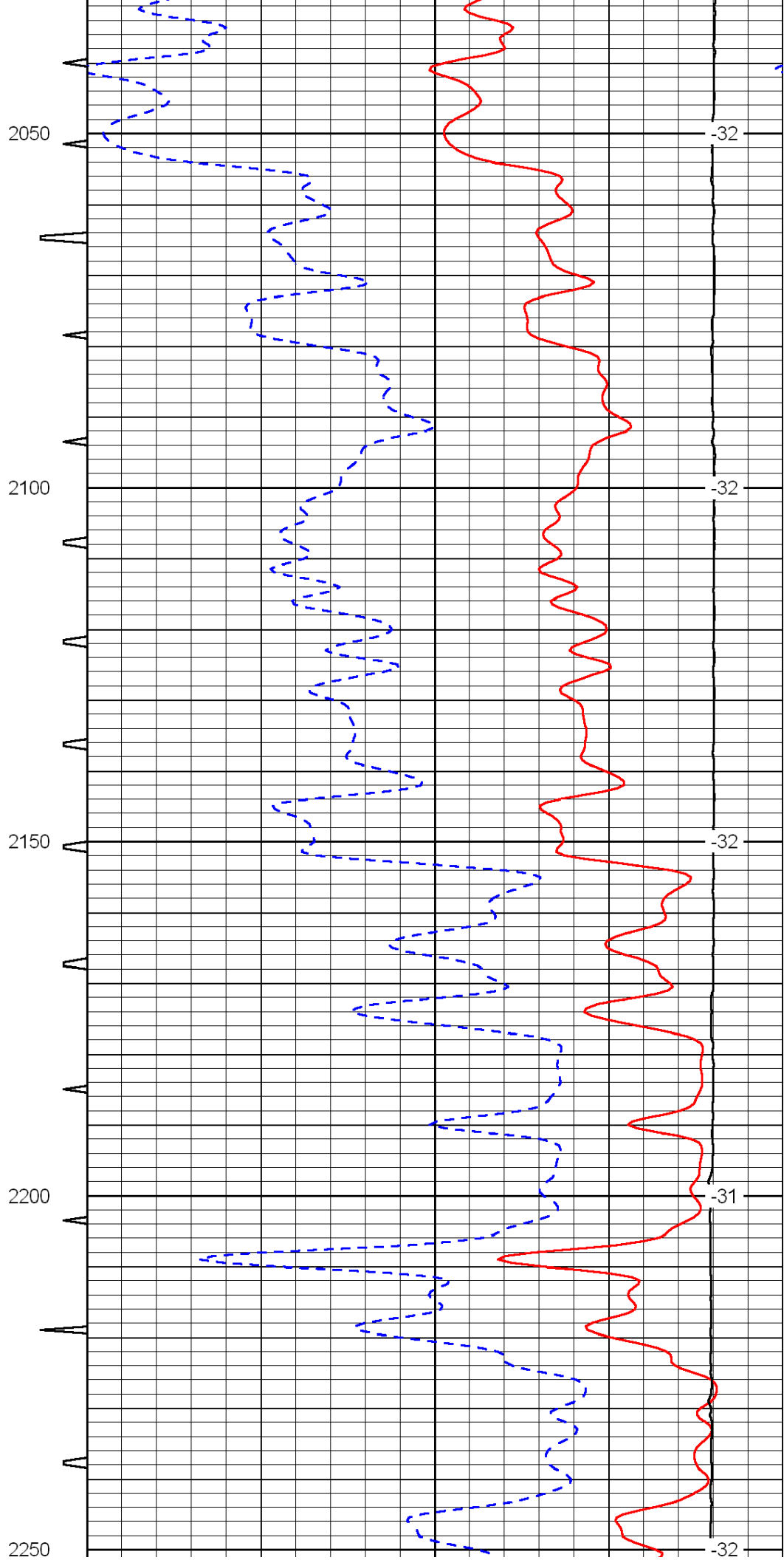
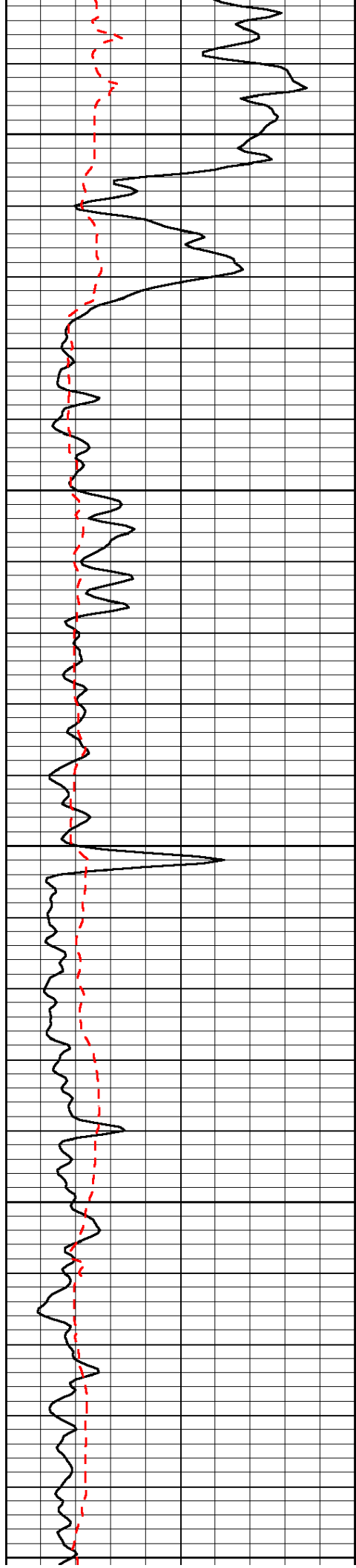


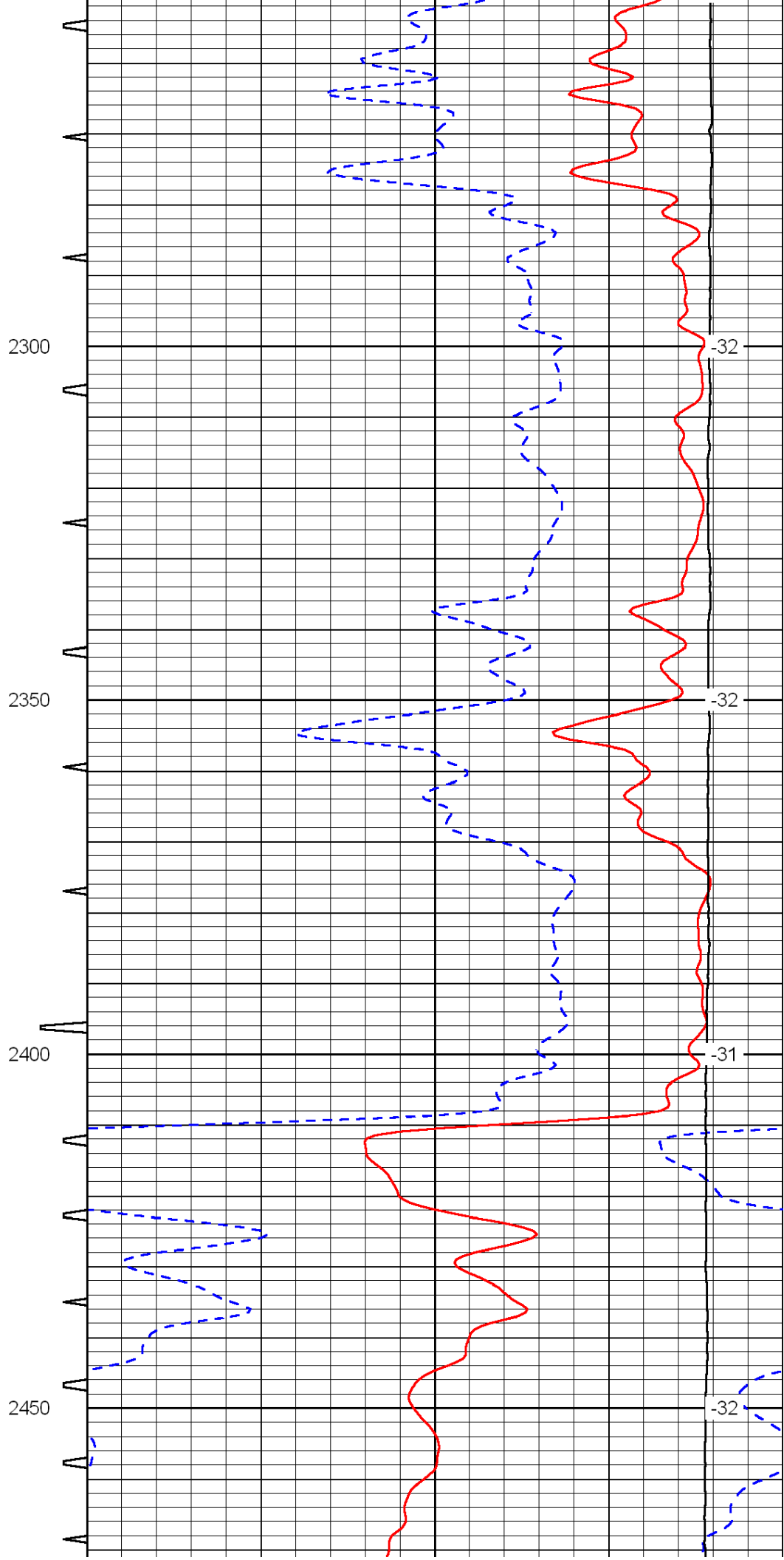
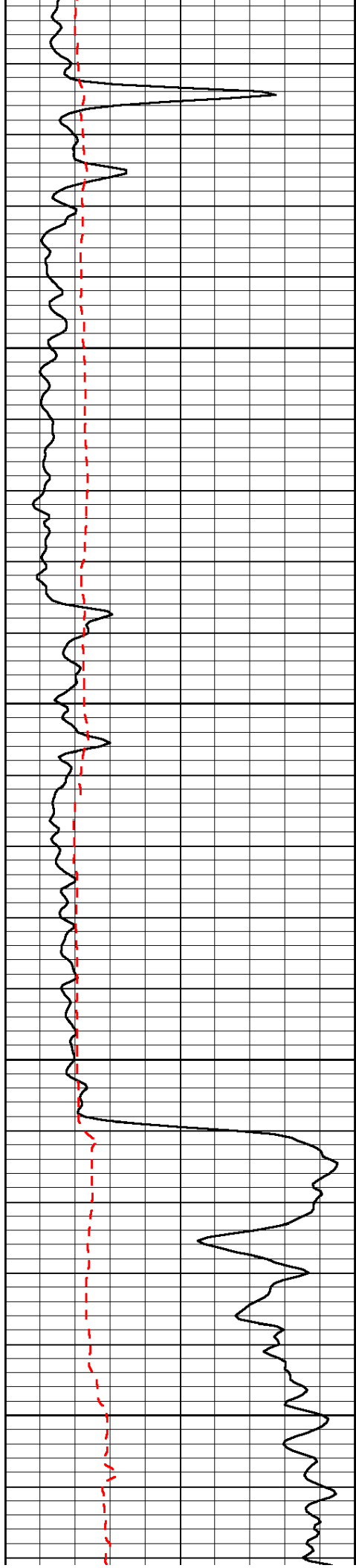


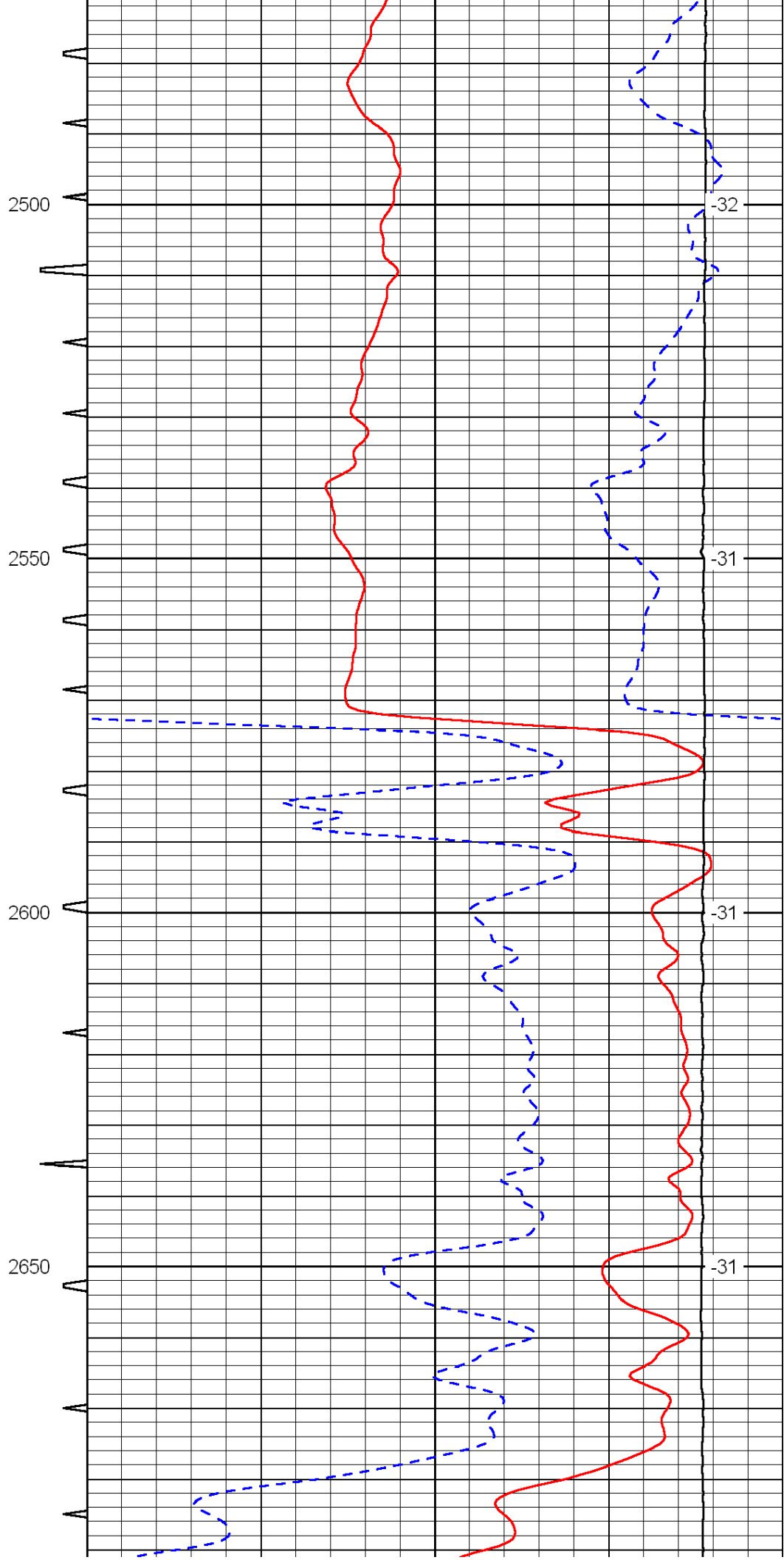
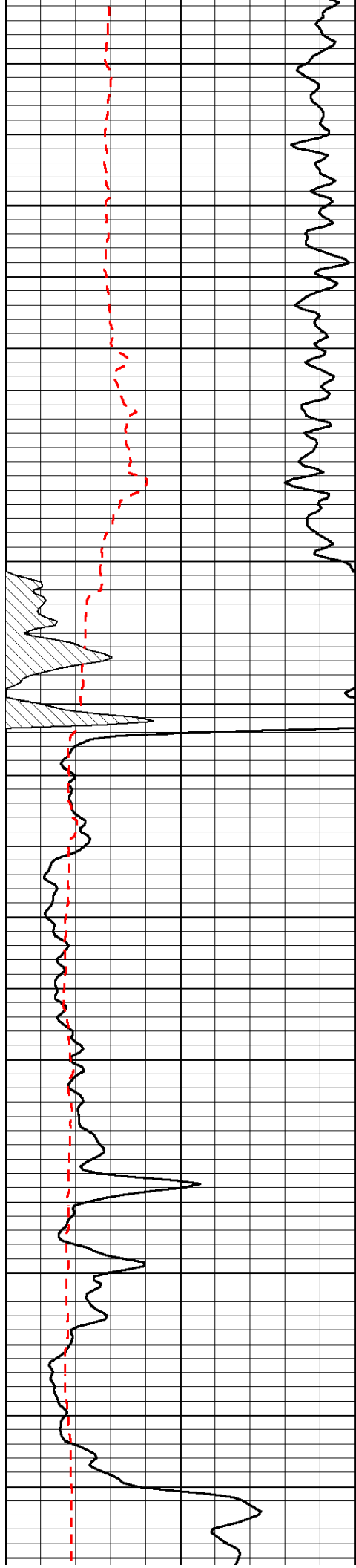


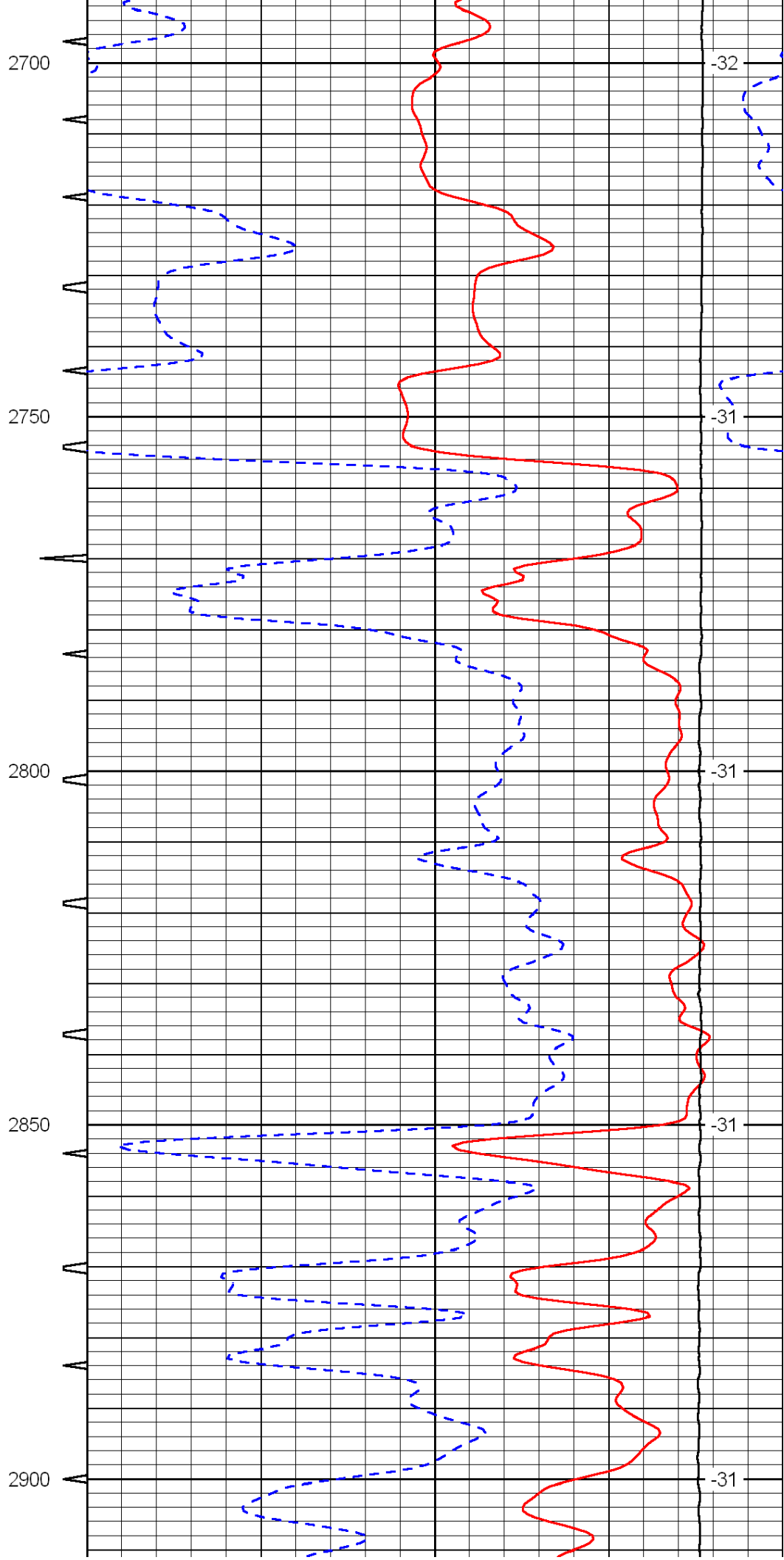
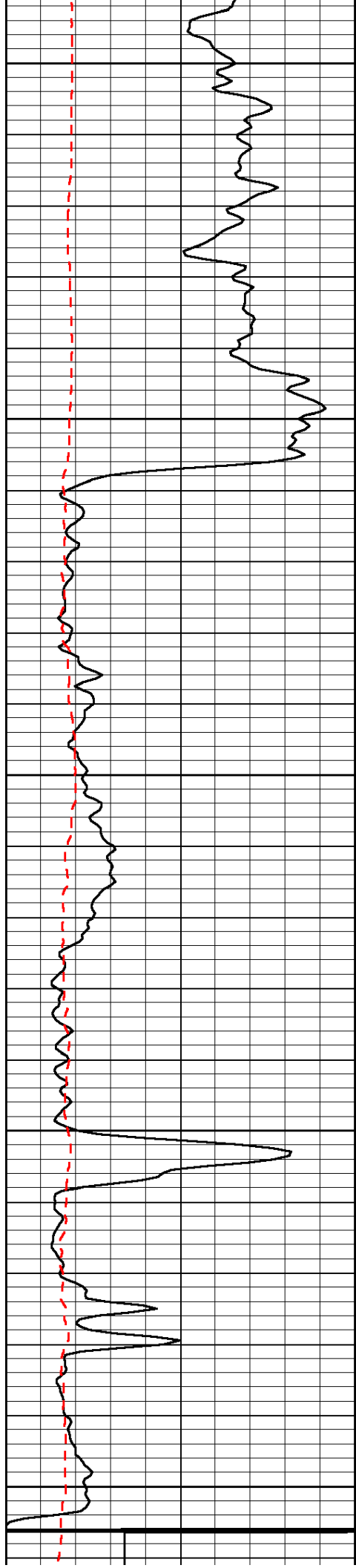


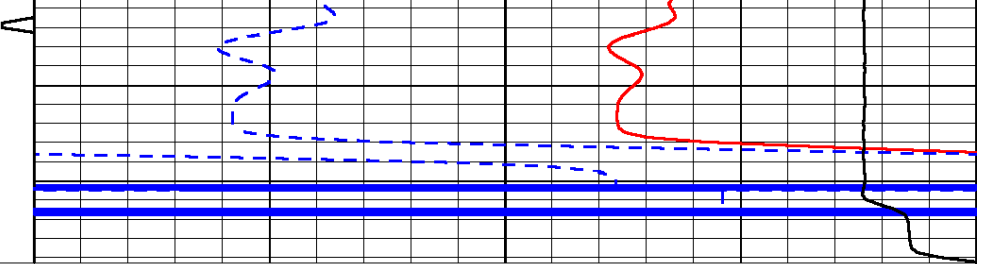
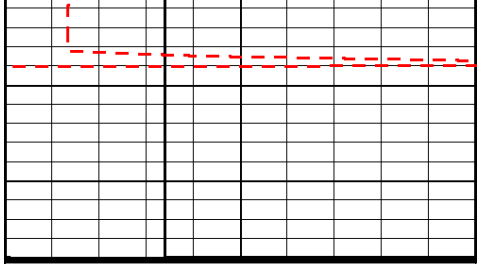












0	Gamma Ray	150	Sonic Int	140	Delta Time (usec/ft)	40
150	Gamma Ray	300	5	0	SPOR	-10
6	Caliper (GAPI)	16		15000	LTEN (lb)	0
						LSPD