



# Microresistivity Log

**DIGITAL LOG** (785) 625-3858

API No.	15-197-20,288-00-00		
Company	L.D. Drilling, Inc.		
Well	Andrew Wendland No.2		
Field			
County	Wabaunsee State	Kansas	
Location	SE NE NE 990' FNL & 330' FEL		
Sec: 4	Twp: 13S	Rge: 13E	Elevation 1035
Permanent Datum		Ground Level	Elevation 1035
Log Measured From		Ground Level	0 Ft. Above Perm. Datum
Drilling Measured From		Ground Level	
Date	3/24/2011		

Run Number	Two	
Depth Driller	2926	
Depth Logger	2933	
Bottom Logged Interval	2932	
Top Log Interval	1800	
Casing Driller	8.625 @ 300	
Casing Logger	299	
Bit Size	7.875	
Type Fluid in Hole	Chemical	
Salinity, ppm CL	2.400	
Density / Viscosity	8.8   50	
pH / Fluid Loss	9.0   11.2	
Source of Sample	Flowline	
Rm @ Meas. Temp	1.2 @ 57	
Rmf @ Meas. Temp	.9 @ 57	
Rmc @ Meas. Temp	1.62 @ 57	
Source of Rmf / Rmc	Charts	
Rm @ BHT	.64 @ 107	
Operating Rig Time	3 1/2 Hours	
Max Rec. Temp. F	107	
Equipment Number	17	
Location	Hays	
Recorded By	C. Desaire	
Witnessed By	George Petersen	Verne Dow

<<< Fold Here >>>

All interpretations are opinions based on inferences from electrical or other measurements and we cannot and do not guarantee the accuracy or correctness of any interpretation, and we shall not, except in the case of gross or willful negligence on our part, be liable or responsible for any loss, costs, damages, or expenses incurred or sustained by anyone resulting from any interpretation made by any of our officers, agents or employees. These interpretations are also subject to our general terms and conditions set out in our current Price Schedule.

**Comments**

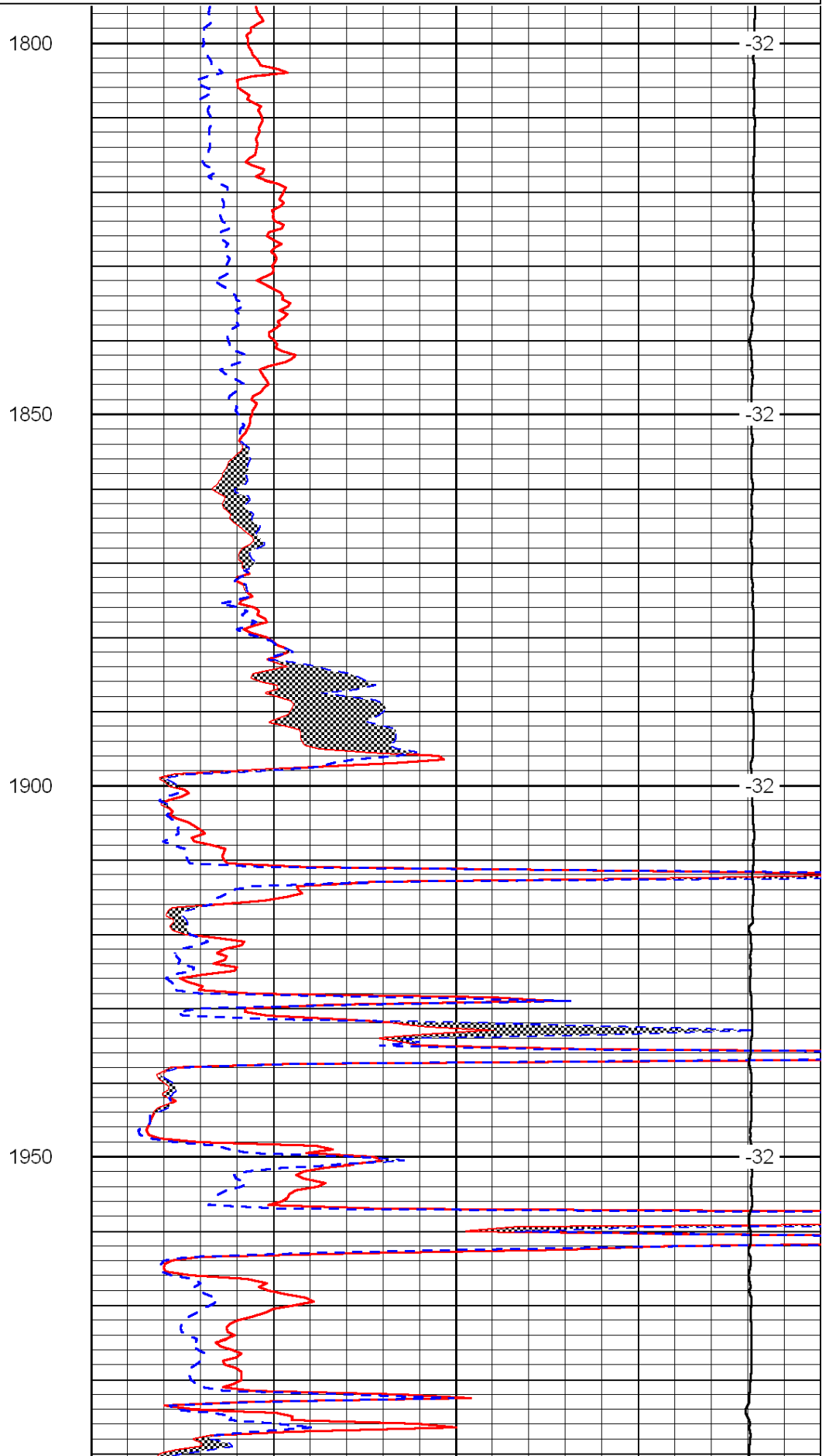
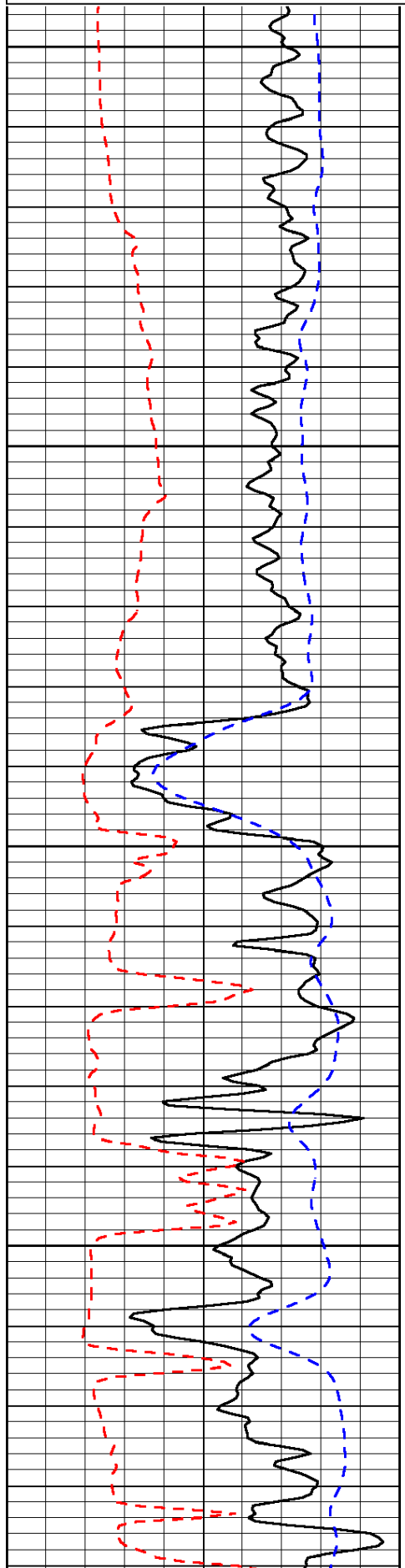
Thank you for using Log-Tech, Inc.  
(785) 625-3858

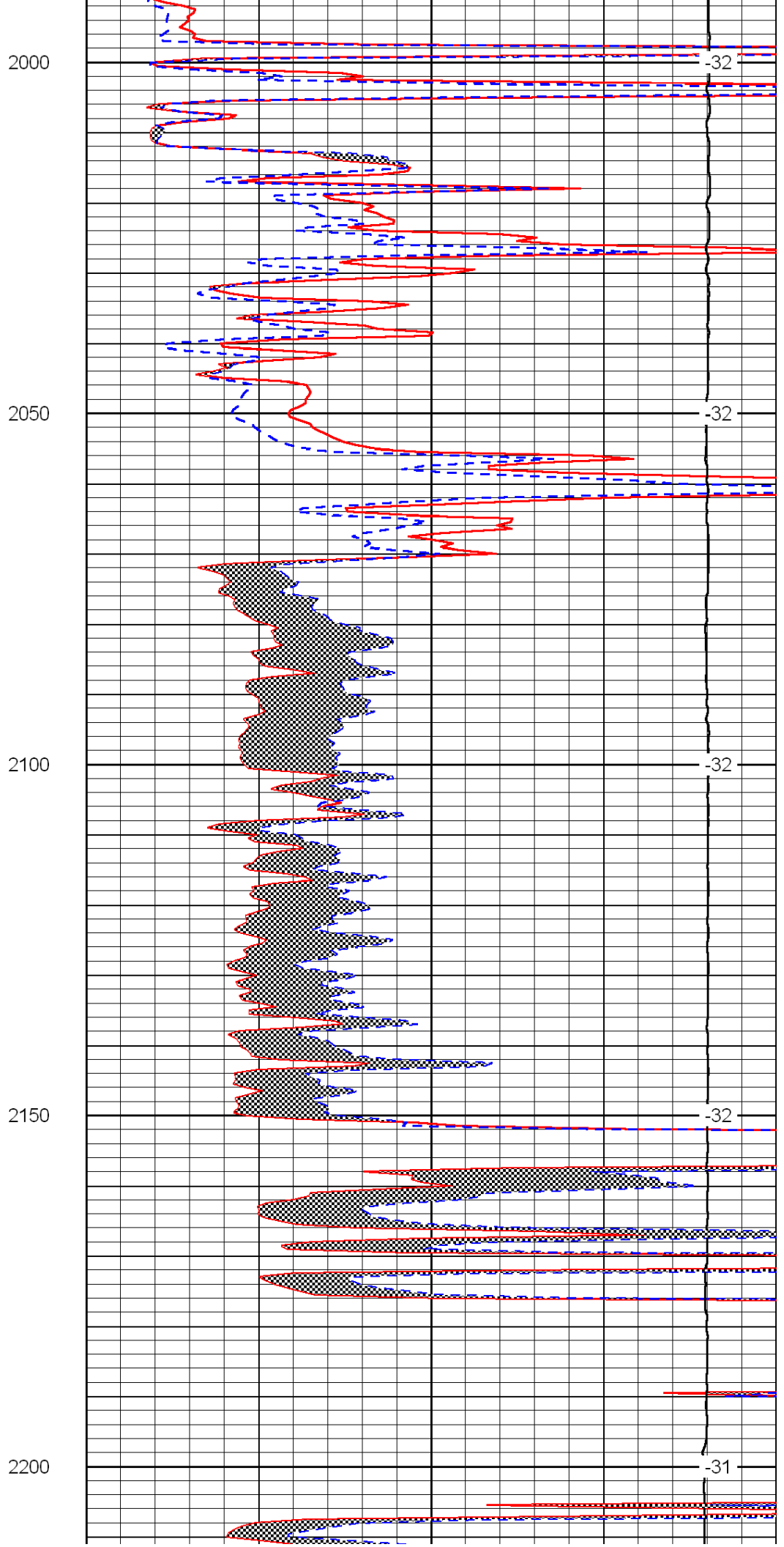
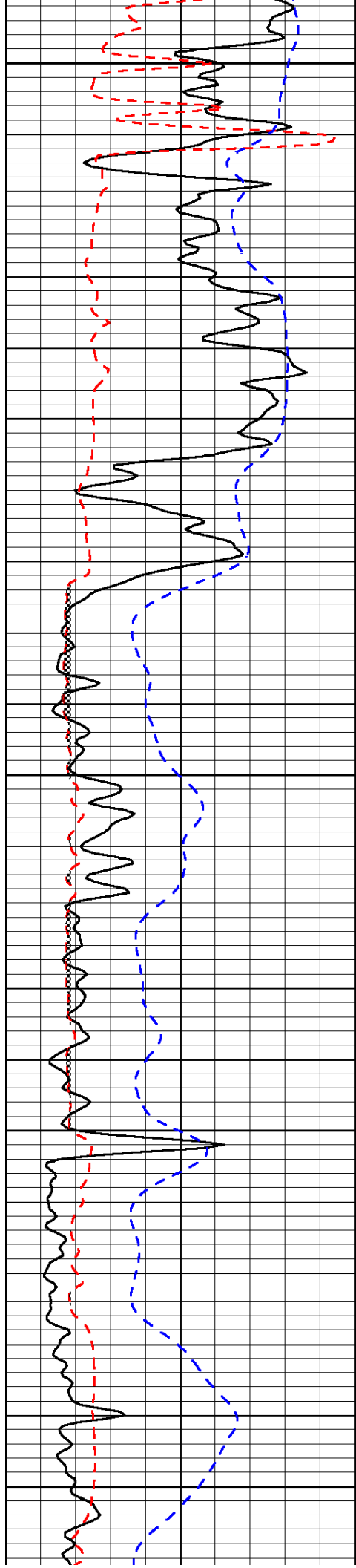
Dover, 2 W, 1/4 S, W Into

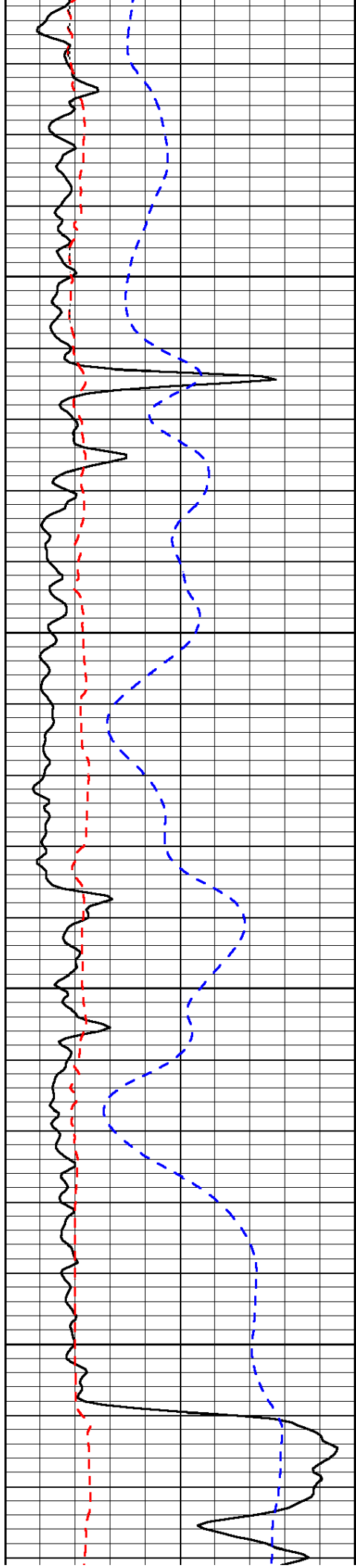
0	Gamma Ray	150
6	Micro Log Caliper (GAPI)	16
-200	SP (mV)	0

0	Micro Inverse 1 X 1	40
0	Micro Normal 2"	40
15000	Line Weight	0

LSPD





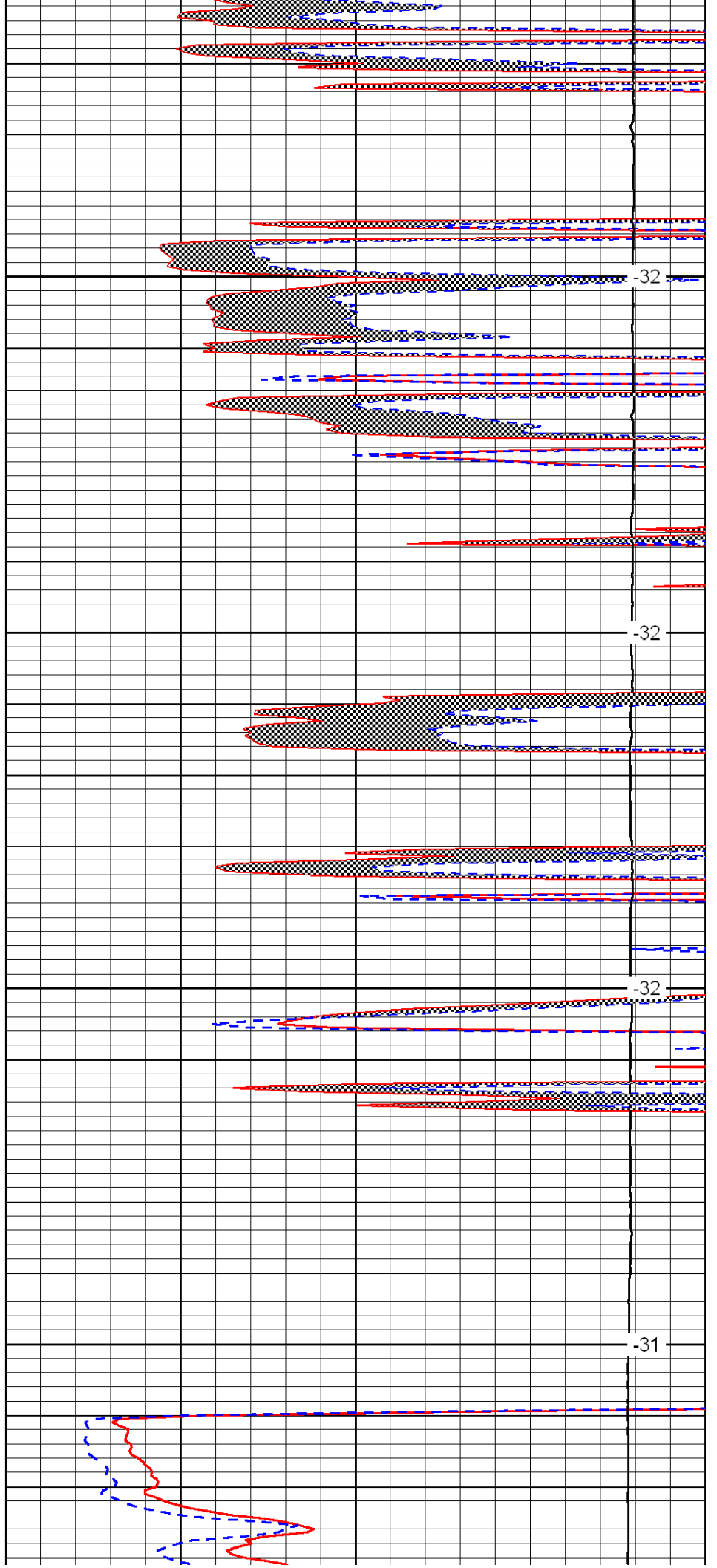


2250

2300

2350

2400

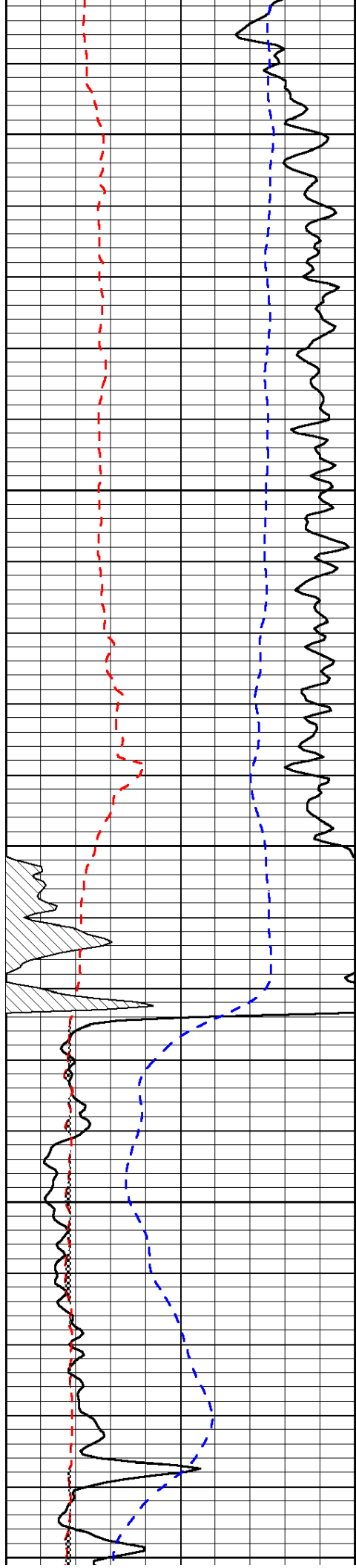


-32

-32

-32

-31



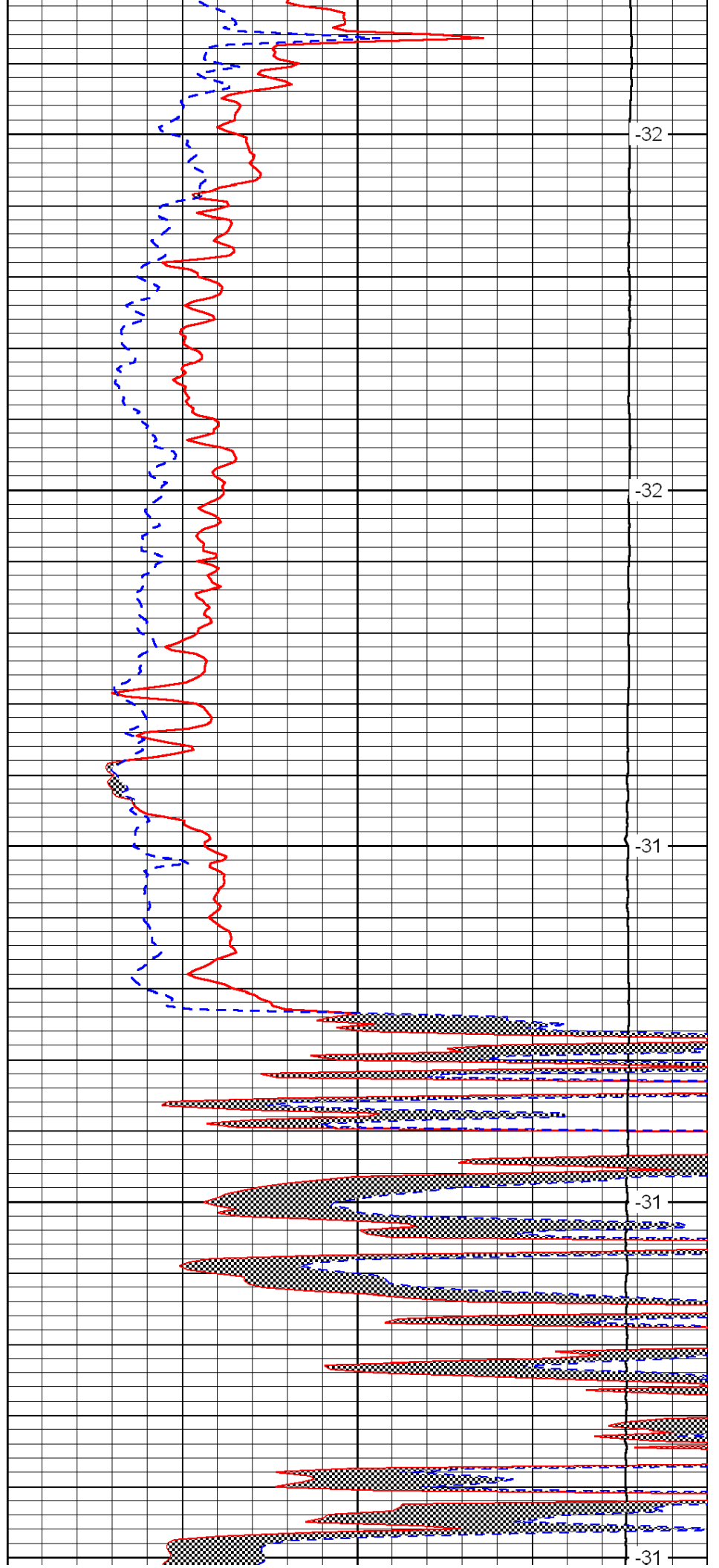
2450

2500

2550

2600

2650



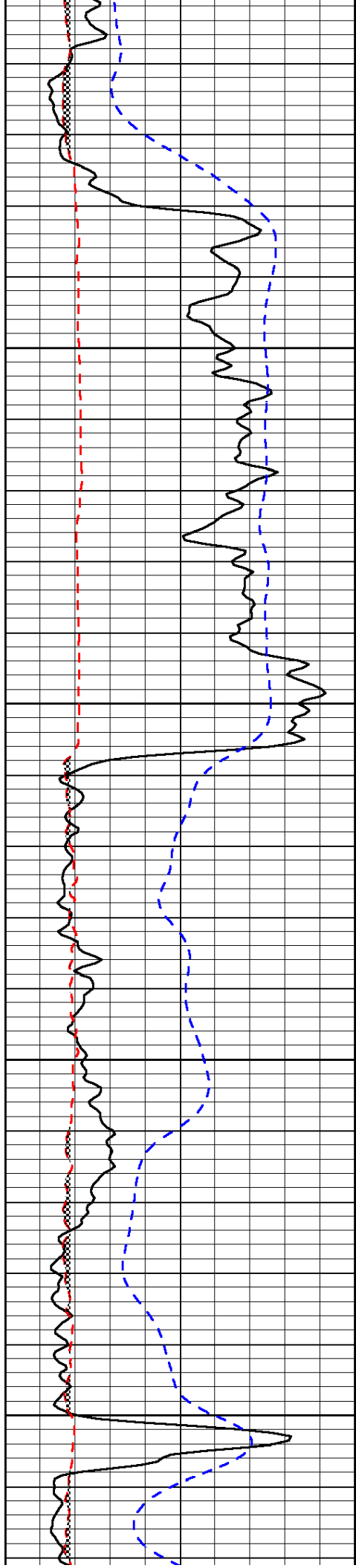
-32

-32

-31

-31

-31

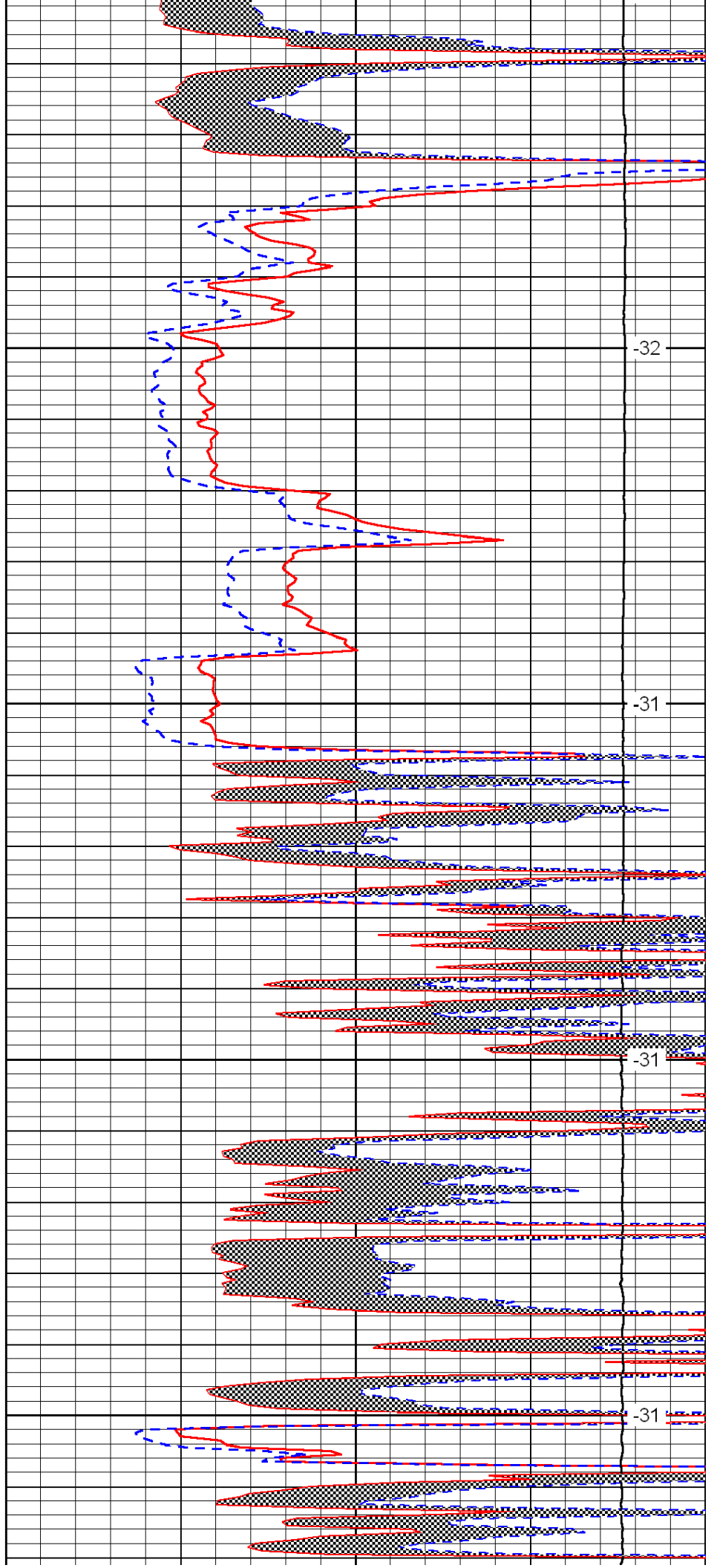


2700

2750

2800

2850

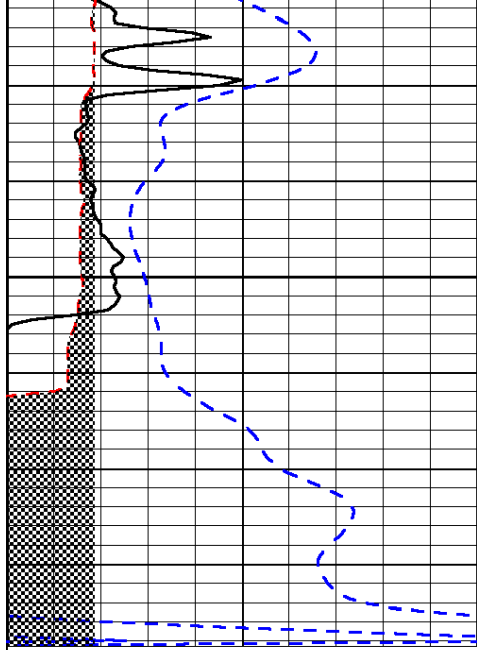


-32

-31

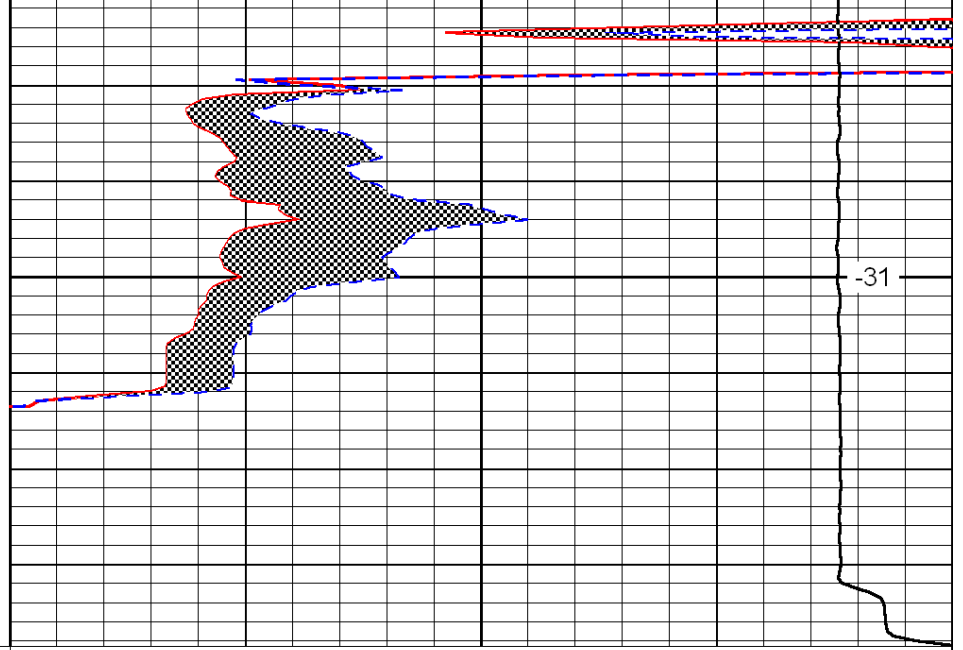
-31

-31



0	Gamma Ray	150
6	Micro Log Caliper (GAPI)	16
-200	SP (mV)	0

2900



0	Micro Inverse 1 X 1	40
0	Micro Normal 2'	40
15000	Line Weight	0

-31

LSPD