



Dual Compensated
Porosity Log

DIGITAL LOG (785) 625-3858

API No. 15-197-20,288-00-00

Company L.D. Drilling, Inc.
Well Andrew Wendland No.2
Field

County Wabaunsee State Kansas

Location SE NE NE
990' FNL & 330' FEL

Other Services
DIL
MEI/BHCS

Permament Datum Ground Level Elevation 1035
Log Measured From Ground Level 0 Ft. Above Perm. Datum
Drilling Measured From Ground Level

Sec: 4 Twp: 13S Rge: 13E

Elevation
K.B.
D.F.
G.L. 1035

Date 3/24/2011

Run Number One

Type Log CNL / CDL

Depth Driller 2926

Depth Logger 2933

Bottom Logged Interval 2912

Top Logged Interval 1800

Type Fluid In Hole Chemical

Salinity, PPM CL 2,400

Density 8.8

Level Full

Max. Rec. Temp. F 107

Operating Rig Time 3 1/2 Hours

Equipment -- Location 17 Hays

Recorded By C. Desaire

Witnessed By George Petersen Verne Dow

Borehole Record				Casing Record			
Run No.	Bit	From	To	Size	Wgt.	From	To
1	12.25	00	300	8.625	24#	00	300
2	7.875	300	2926				

<<< Fold Here >>>

All interpretations are opinions based on inferences from electrical or other measurements and we cannot and do not guarantee the accuracy or correctness of any interpretation, and we shall not, except in the case of gross or willful negligence on our part, be liable or responsible for any loss, costs, damages, or expenses incurred or sustained by anyone resulting from any interpretation made by any of our officers, agents or employees. These interpretations are also subject to our general terms and conditions set out in our current Price Schedule.

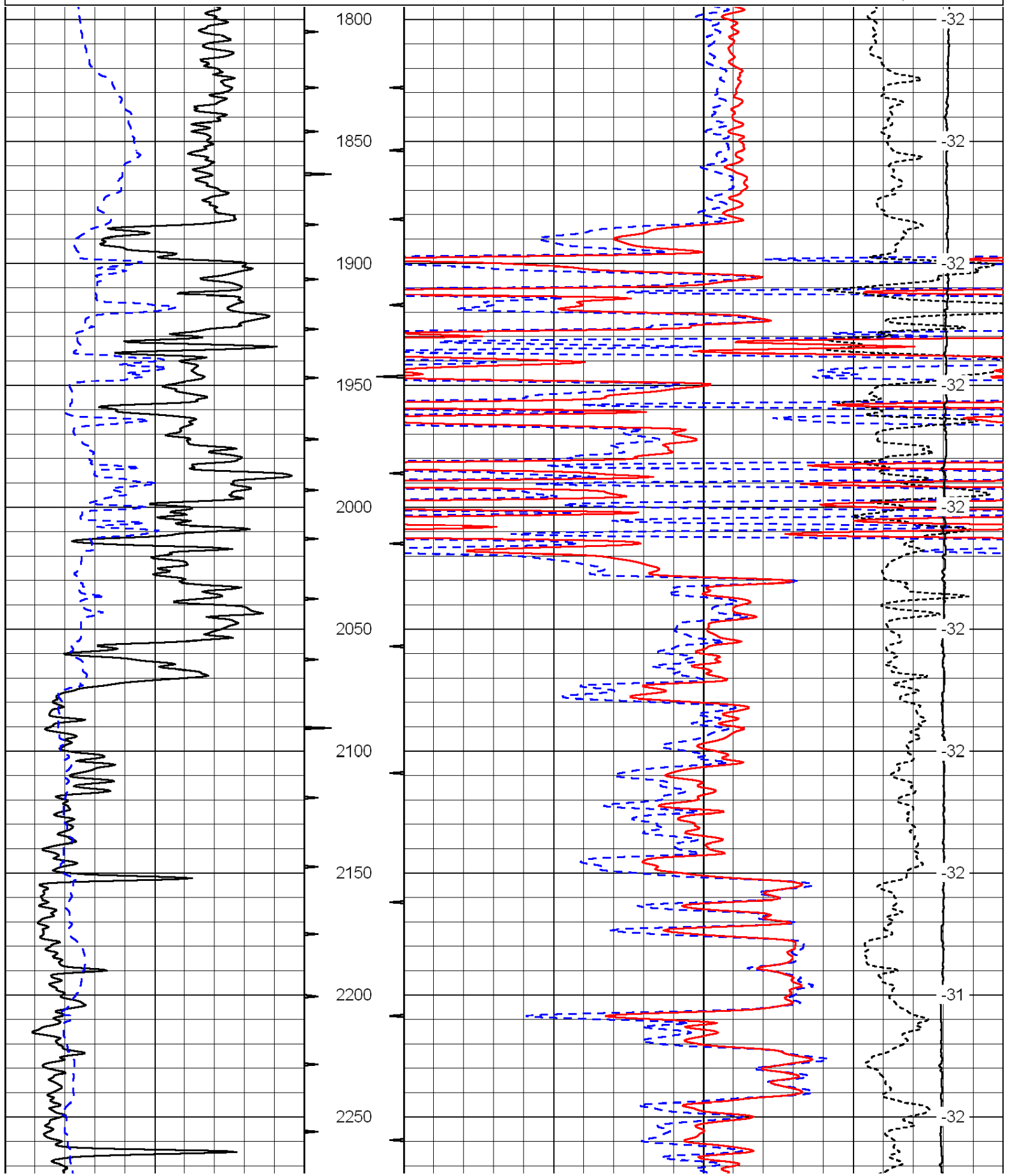
Comments

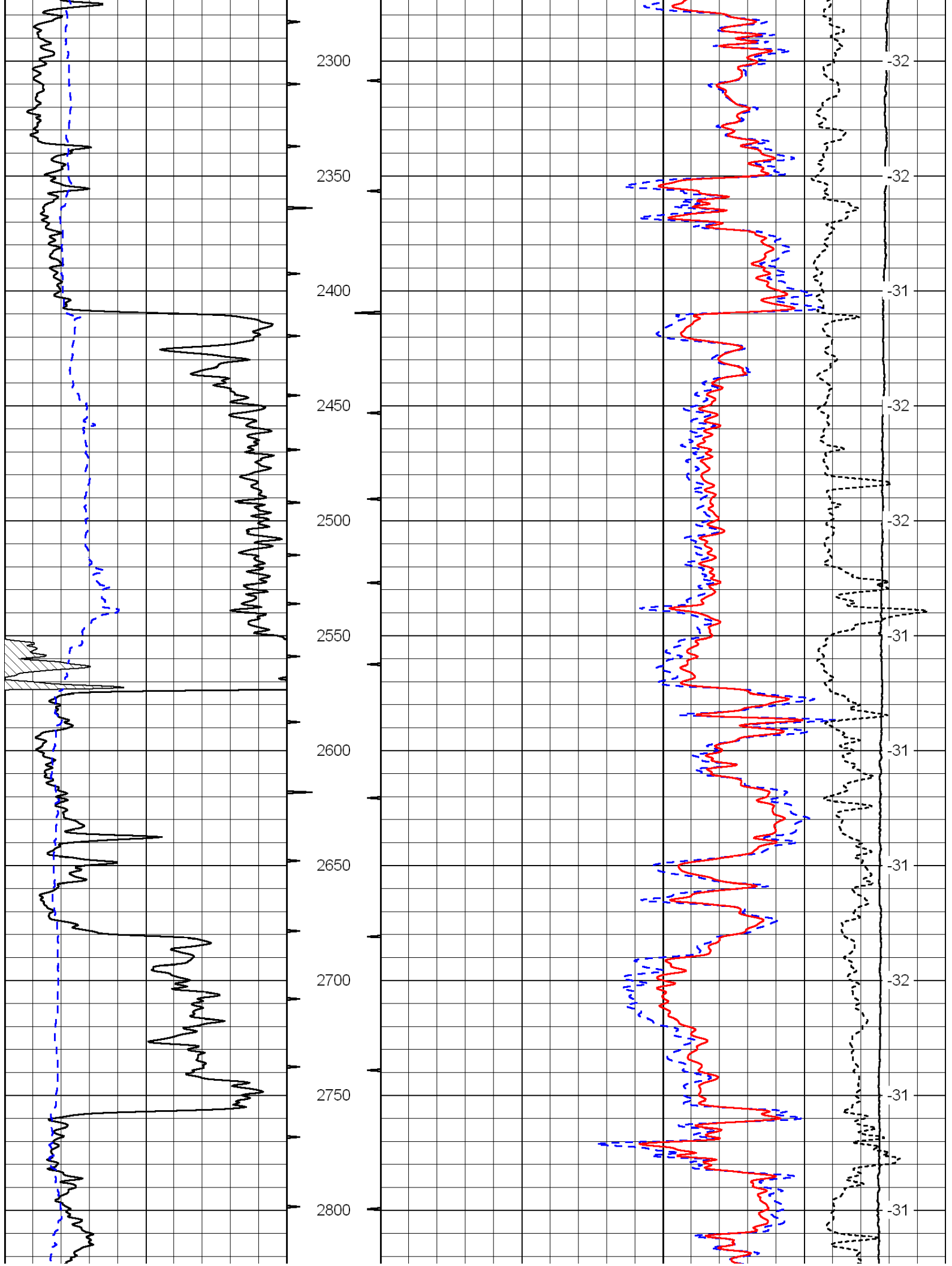
Thank you for using Log-Tech, Inc.
(785) 625-3858

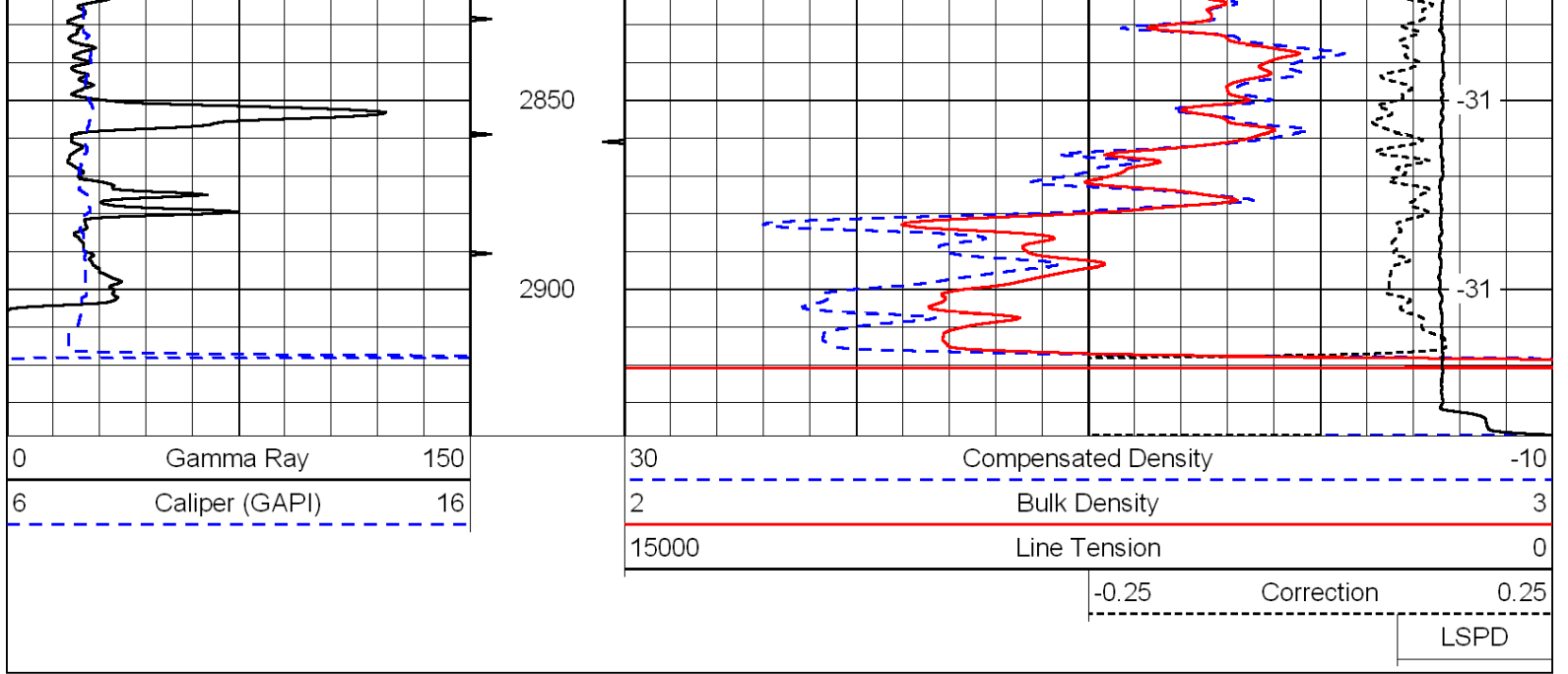
Dover, 2 W, 1/4 S, W Into

0	Gamma Ray	150
6	Caliper (GAPI)	16

30	Compensated Density	-10
2	Bulk Density	3
15000	Line Tension	0
-0.25	Correction	0.25
LSPD		







Database File: c:\warrior\data\ld drilling_andrew wendland no.2\ldhd.db
 Dataset Pathname: dil\ldstk
 Presentation Format: cndlspec
 Dataset Creation: Sun Mar 27 14:50:34 2011
 Charted by: Depth in Feet scaled 1:240

