



Dual Compensated Porosity Log

DIGITAL LOG (785) 625-3858

API No. 15-179-21,276-00-00

Company **Castle Resources, Inc.**
 Well **Mary No. 1**
 Field **Wildcat**
 County **Sheridan** State **Kansas**

Location **NW/NE NW
330' FNL & 1,650' FWL**

Sec: **4** Twp: **9 S** Rge: **29 W**

Other Services **DIL**

Permanent Datum **Ground Level** Elevation **2848**
 Log Measured From **Kelly Bushing** **8** Ft. Above Perm. Datum
 Drilling Measured From **Kelly Bushing**

Date **2/17/2011**

Run Number **One**

Type Log **CNL / CDL**

Depth Driller **4250**

Depth Logger **4249**

Bottom Logged Interval **4228**

Top Logged Interval **3200**

Type Fluid In Hole **Chemical**

Salinity, PPM CL **800**

Density **9.4**

Level **Full**

Max. Rec. Temp. F **119**

Operating Rig Time **4 Gours**

Equipment -- Location **10 Hays**

Recorded By **Jim Schuler**

Witnessed By **Jerry Green**

Borehole Record				Casing Record			
Run No.	Bit	From	To	Size	Wgt.	From	To
1	12.25	00	267	8.625	24#	00	267
2	7.875	267	4250				

<<< Fold Here >>>

All interpretations are opinions based on inferences from electrical or other measurements and we cannot and do not guarantee the accuracy or correctness of any interpretation, and we shall not, except in the case of gross or willful negligence on our part, be liable or responsible for any loss, costs, damages, or expenses incurred or sustained by anyone resulting from any interpretation made by any of our officers, agents or employees. These interpretations are also subject to our general terms and conditions set out in our current Price Schedule.

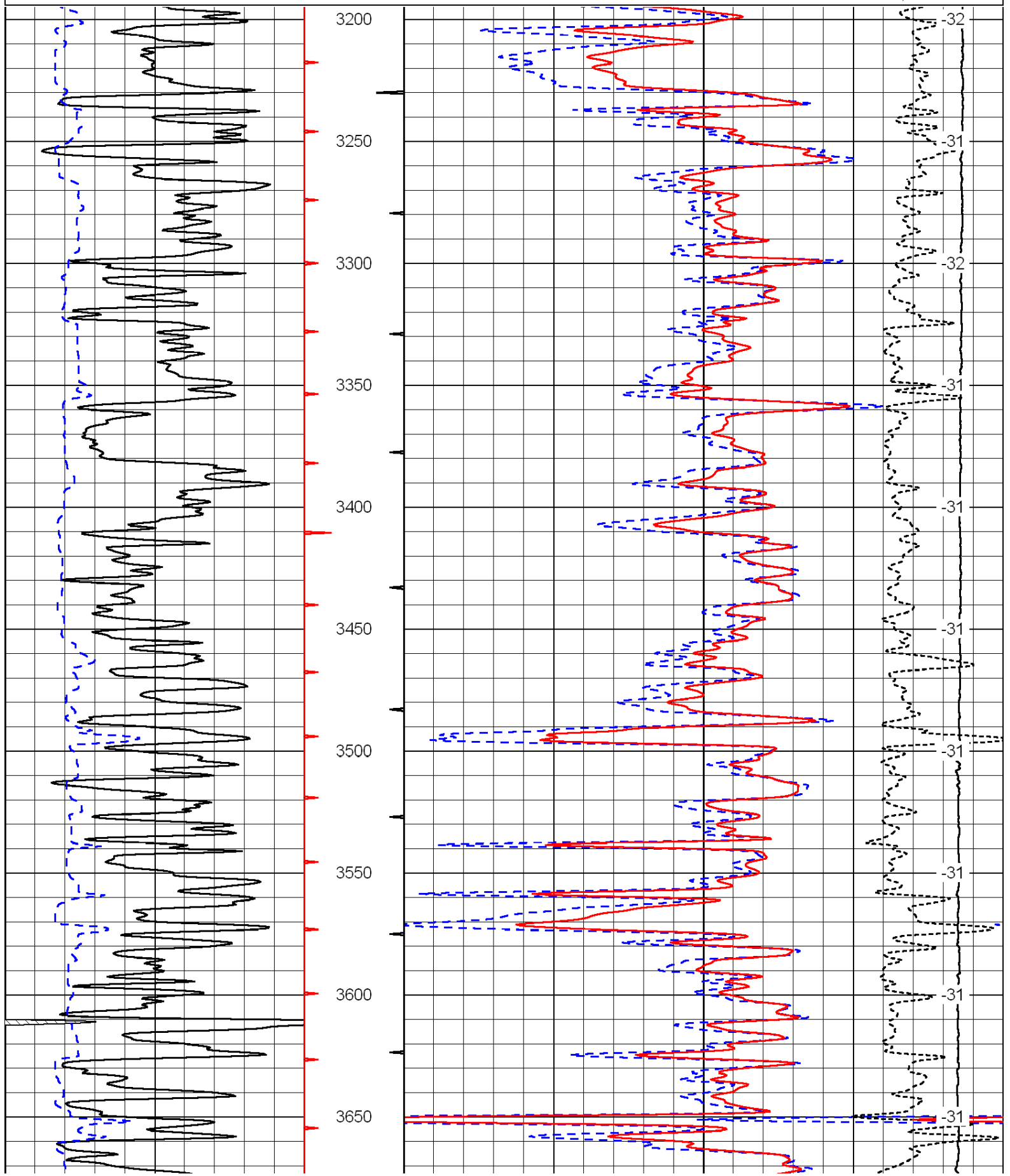
Comments

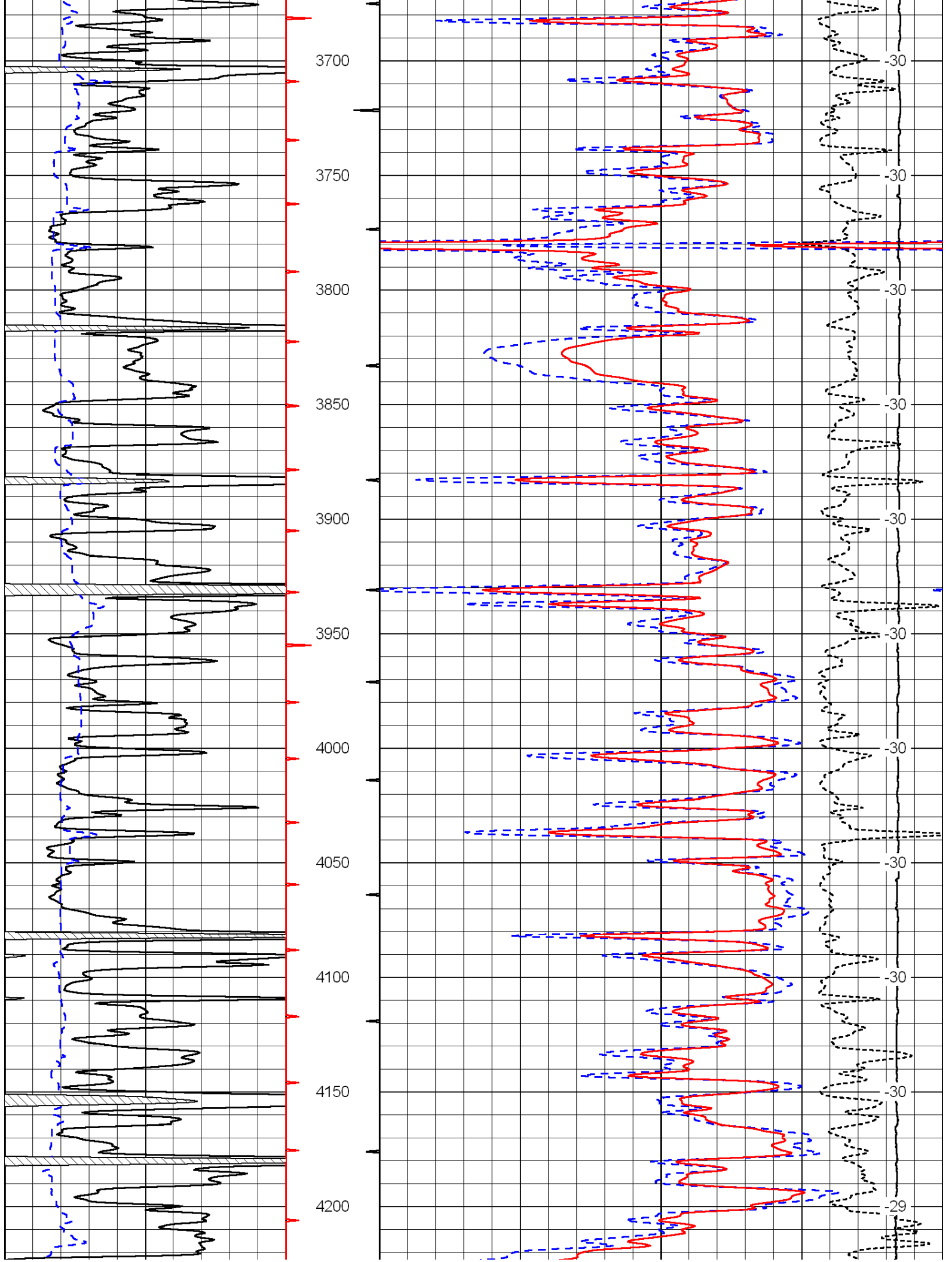
Thank you for using Log-Tech, Inc.
 (785) 625-3858

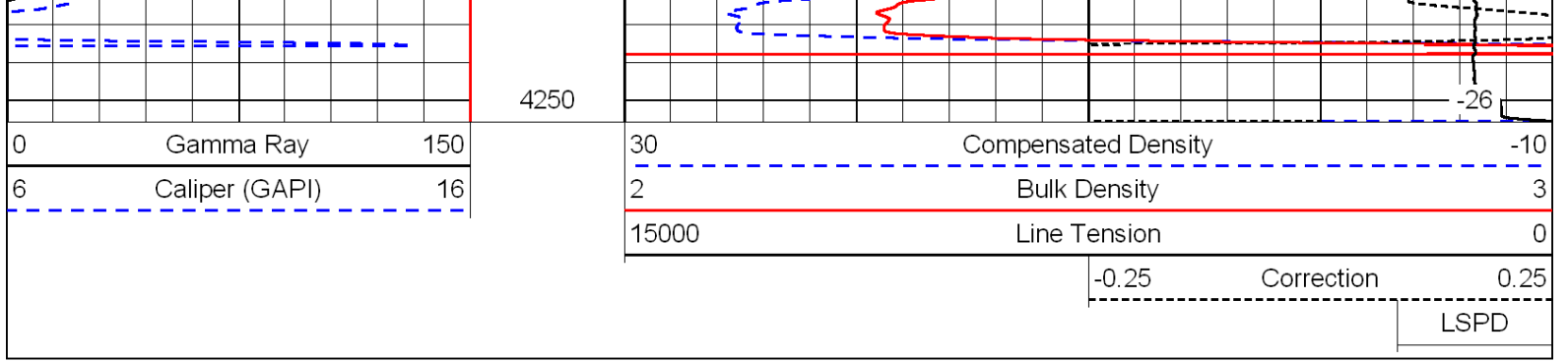
Hoxie, Kansas South 4 Miles to 30 S Road, 5 Miles West to 50 W Road,
 1 Mile South to 40 S Road, 1 1/2 Miles West, South Into

0	Gamma Ray	150
6	Caliper (GAPI)	16

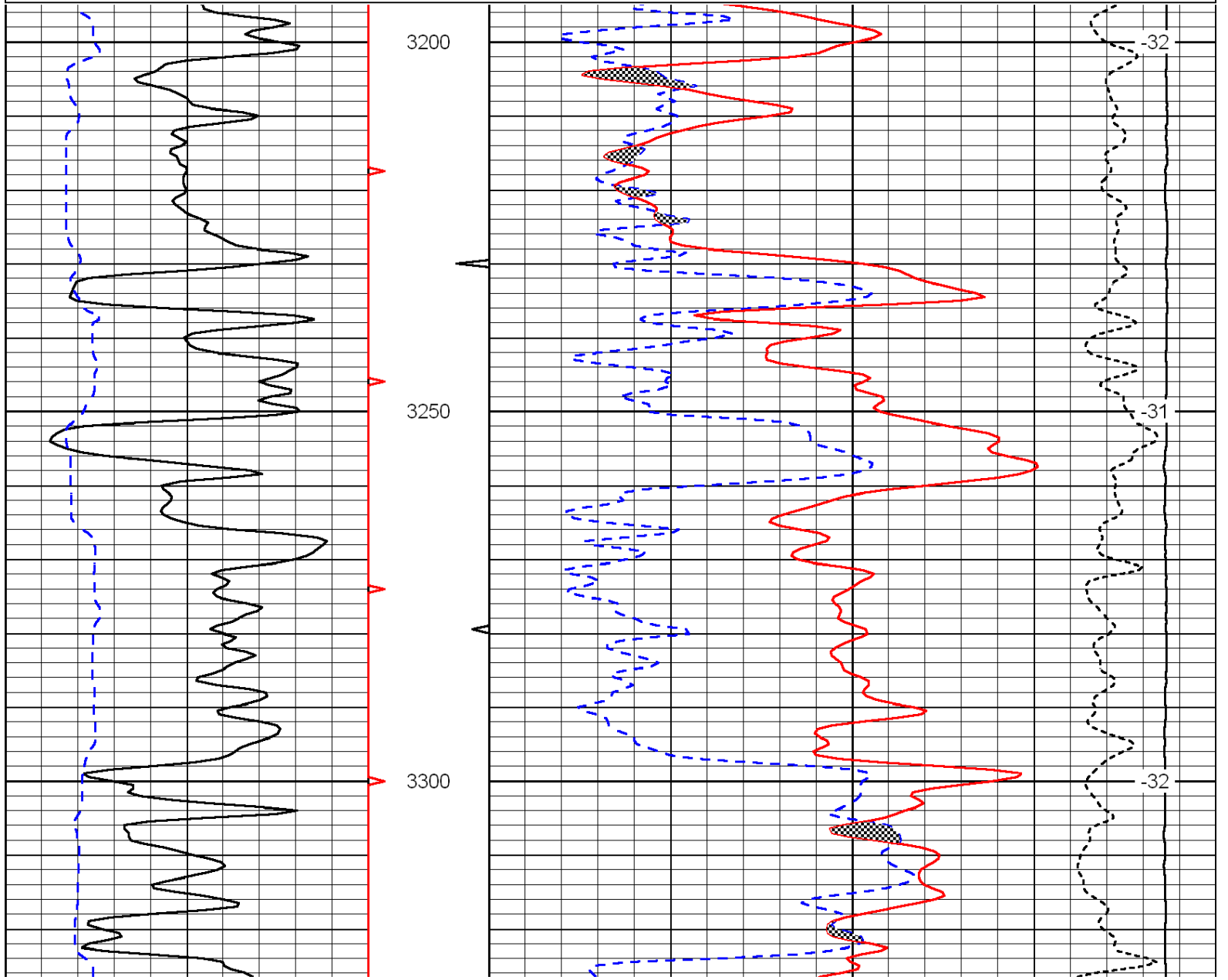
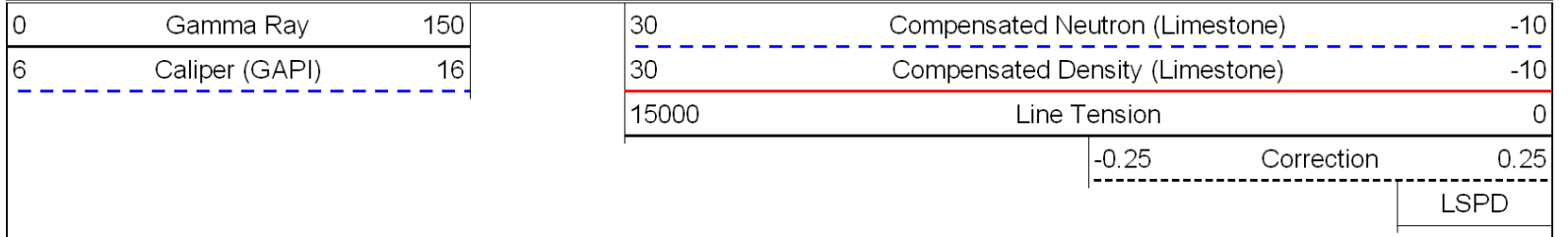
30	Compensated Density	-10
2	Bulk Density	3
15000	Line Tension	0
-0.25	Correction	0.25
LSPD		

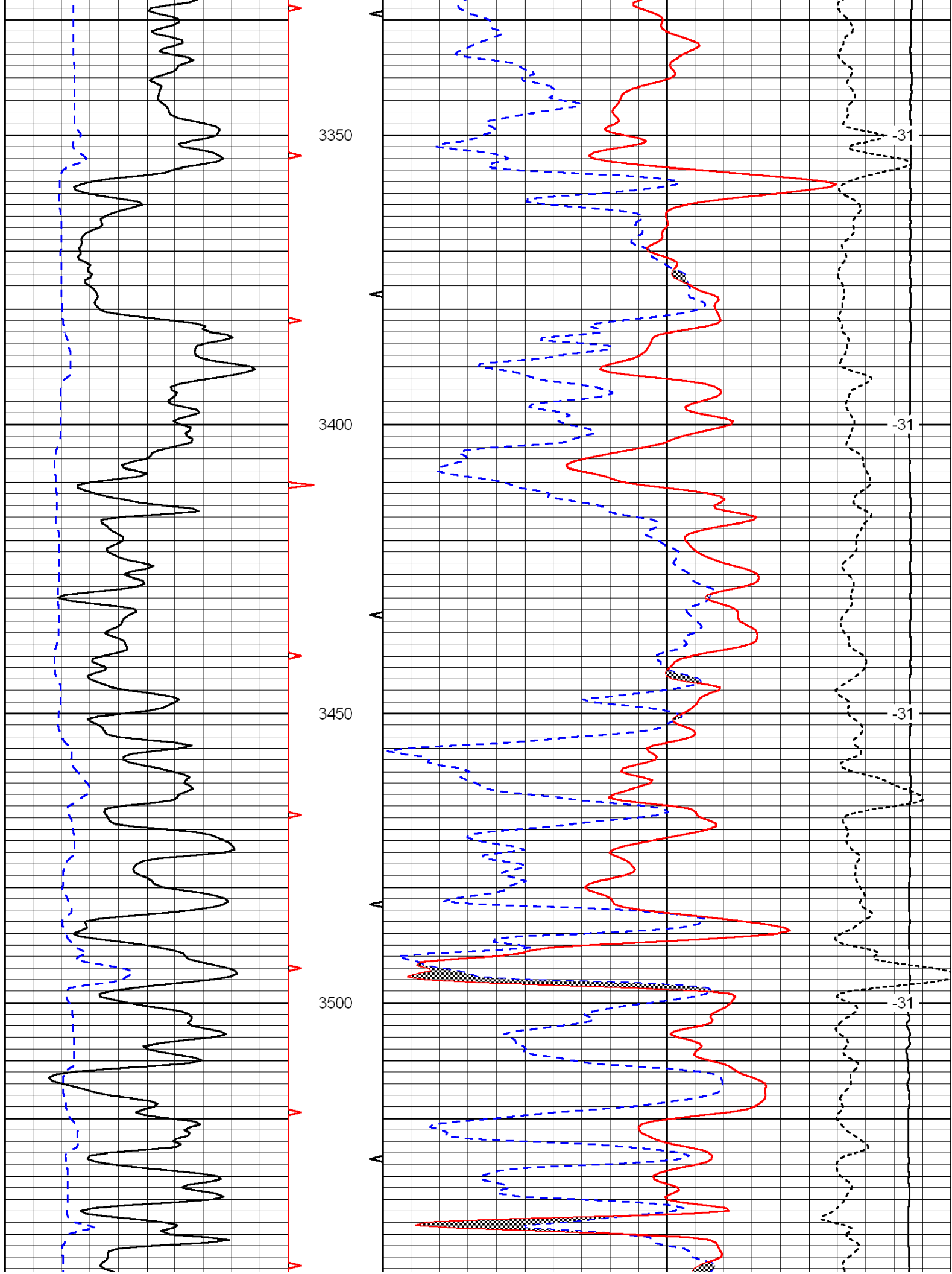


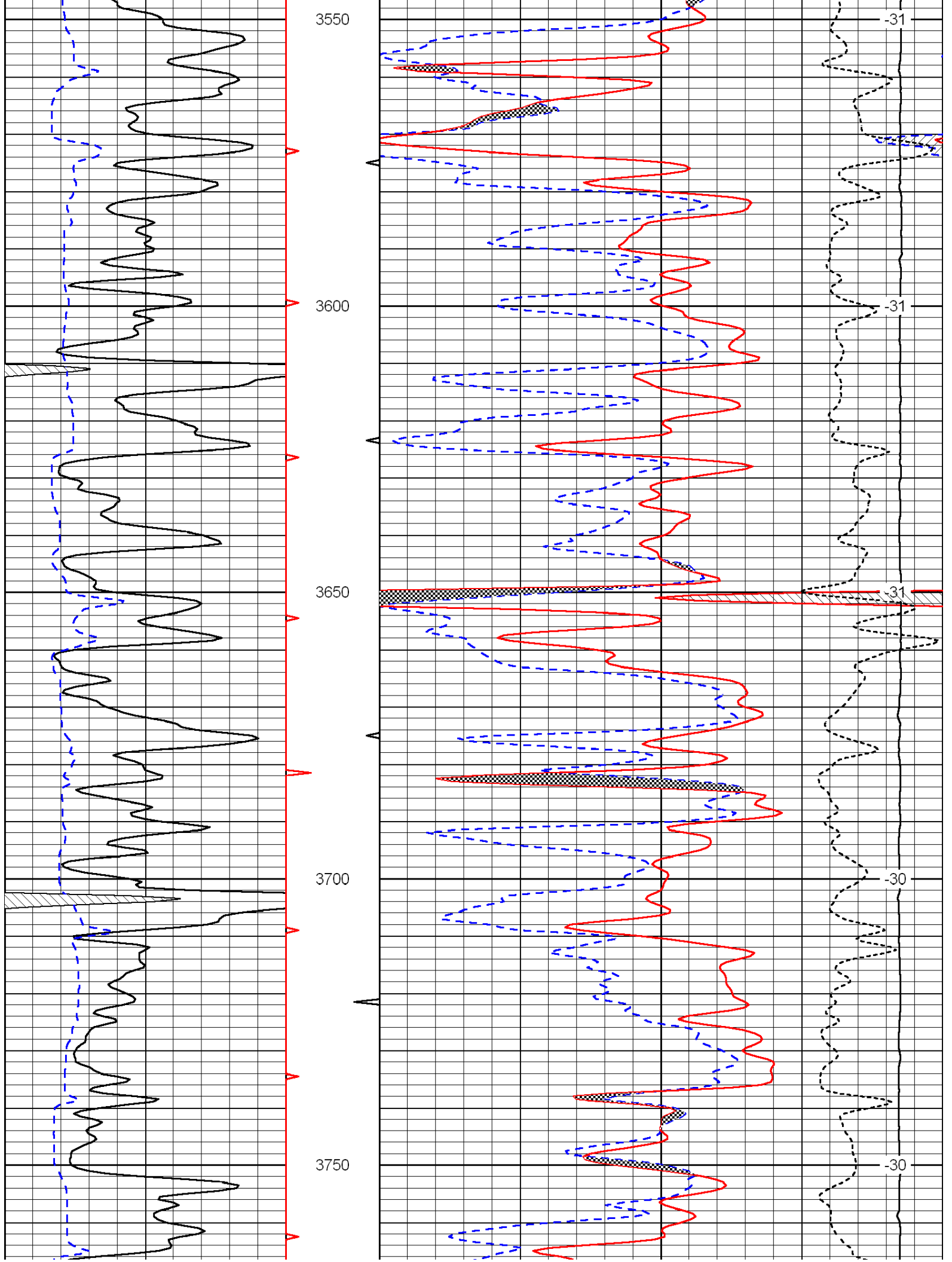


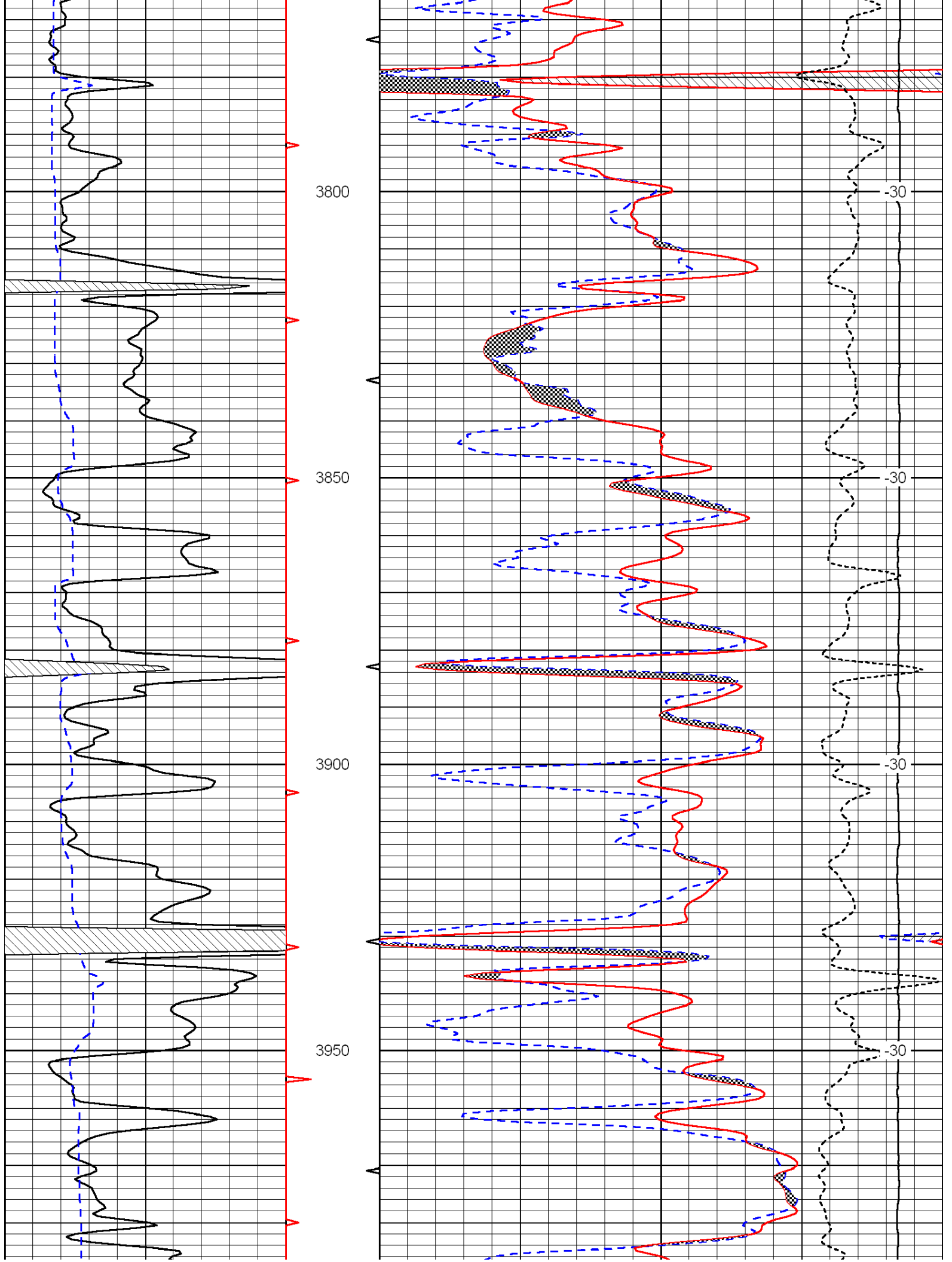


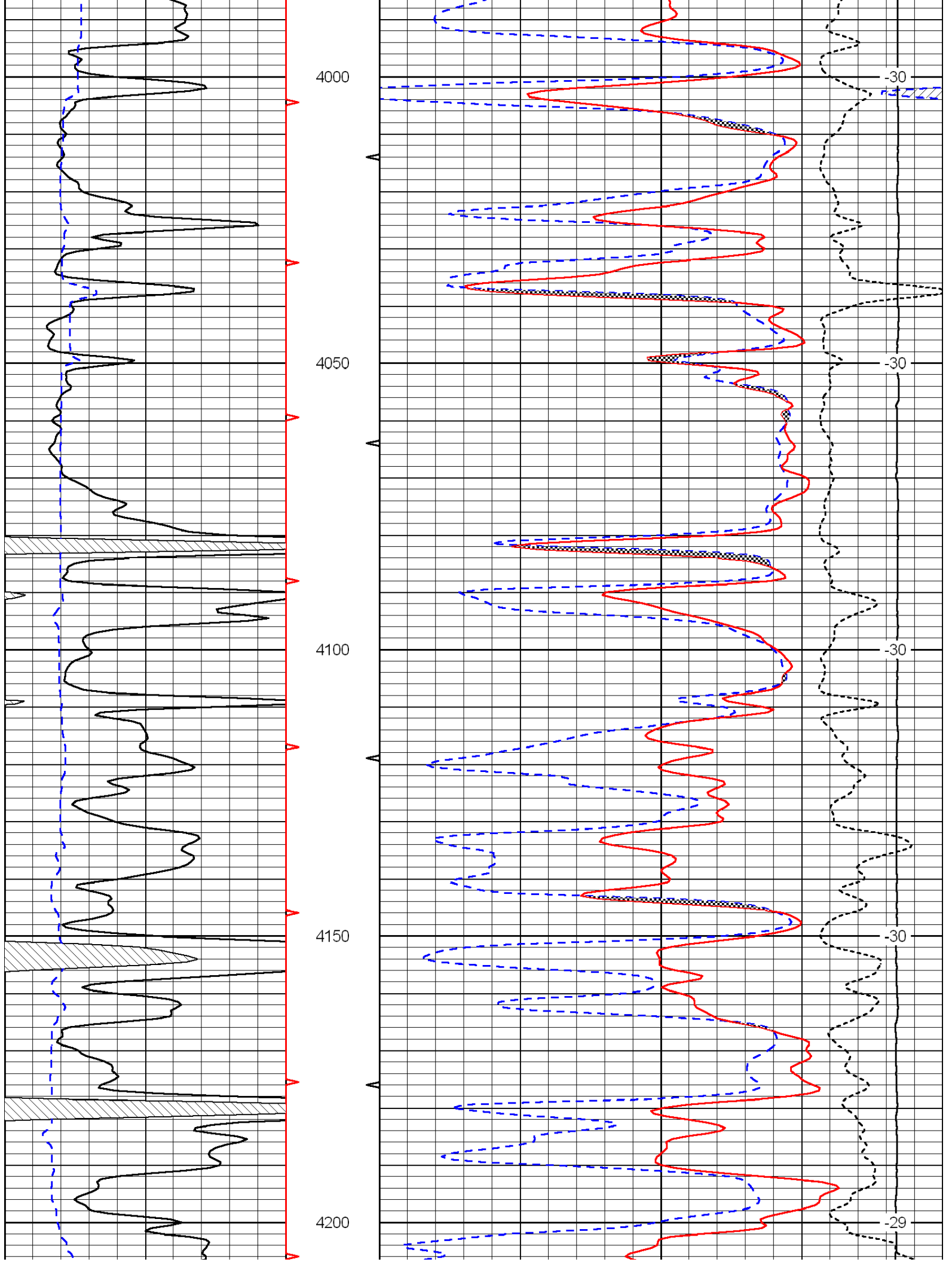
Database File: c:\warrior\data\castle resources_mary no. 1\castle_mary_1hd.db
 Dataset Pathname: dil/casstk
 Presentation Format: cndspec
 Dataset Creation: Thu Feb 17 13:11:20 2011
 Charted by: Depth in Feet scaled 1:240

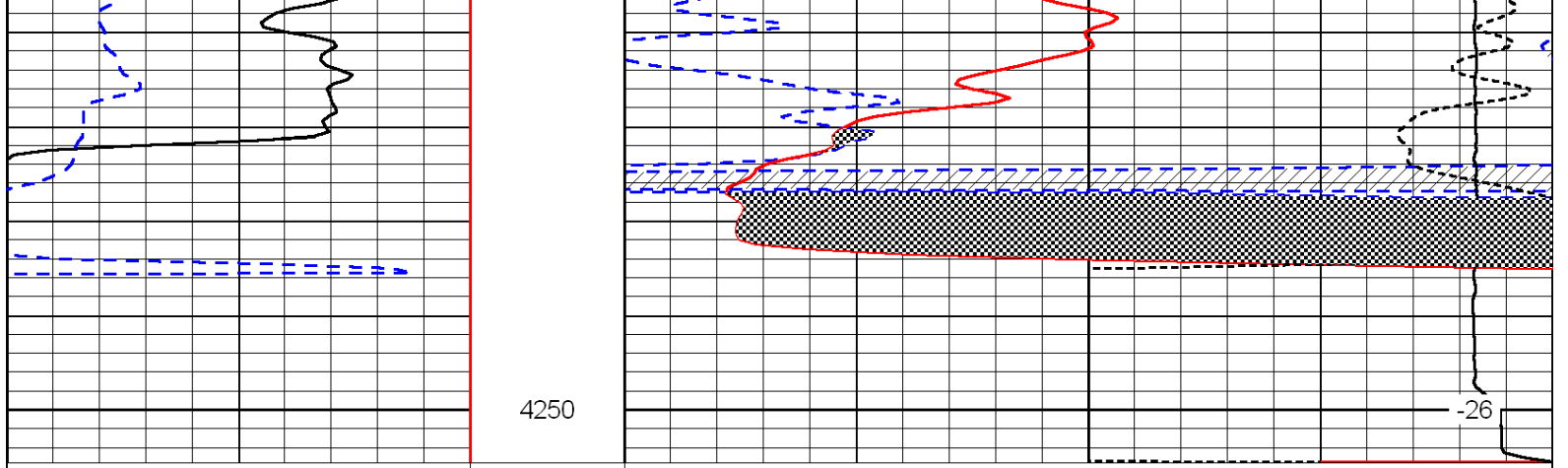












4250

-26

0	Gamma Ray	150
---	-----------	-----

6	Caliper (GAPI)	16
---	----------------	----

30	Compensated Neutron (Limestone)	-10
----	---------------------------------	-----

30	Compensated Density (Limestone)	-10
----	---------------------------------	-----

15000	Line Tension	0
-------	--------------	---

-0.25	Correction	0.25
-------	------------	------

LSPD
