



Dual Induction Log

DIGITAL LOG (785) 625-3858

API No.	15-179-21,276-00-00	
Company	Castle Resources, Inc.	
Well	Mary No. 1	
Field	Wildcat	
County	Sheridan	State Kansas
Location	NW/NE NW 330' FNL & 1,650' FWL	
Sec: 4	Twp: 9 S	Rge: 29 W
Other Services	CNL/CDL	

Permanent Datum	Ground Level	Elevation 2848
Log Measured From	Kelly Bushing	8 Ft. Above Perm. Datum
Drilling Measured From	Kelly Bushing	
Date	2/17/2011	
Run Number	One	
Depth Driller	4250	
Depth Logger	4249	
Bottom Logged Interval	4248	
Top Log Interval	250	
Casing Driller	8.625 @ 267	
Casing Logger	264	
Bit Size	7.875	
Type Fluid in Hole	Chemical	
Salinity, ppm CL	800	
Density / Viscosity	9.4	48
pH / Fluid Loss	10.0	8
Source of Sample	Flowline	
Rm @ Meas. Temp	1.05 @ 70	
Rmf @ Meas. Temp	.79 @ 70	
Rmc @ Meas. Temp	1.42 @ 70	
Source of Rmf / Rmc	Charts	
Rm @ BHT	.62 @ 119	
Operating Rig Time	4 Hours	
Max Rec. Temp. F	119	
Equipment Number	10	
Location	Hays	
Recorded By	Jim Schuler	
Witnessed By	Jerry Green	

<<< Fold Here >>>

All interpretations are opinions based on inferences from electrical or other measurements and we cannot and do not guarantee the accuracy or correctness of any interpretation, and we shall not, except in the case of gross or willful negligence on our part, be liable or responsible for any loss, costs, damages, or expenses incurred or sustained by anyone resulting from any interpretation made by any of our officers, agents or employees. These interpretations are also subject to our general terms and conditions set out in our current Price Schedule.

Comments

Thank you for using Log-Tech, Inc.
(785) 625-3858

Hoxie, Kansas South 4 Miles to 30 S Road, 5 Miles West to 50 W Road,
1 Mile South to 40 S Road, 1 1/2 Miles West, South Into

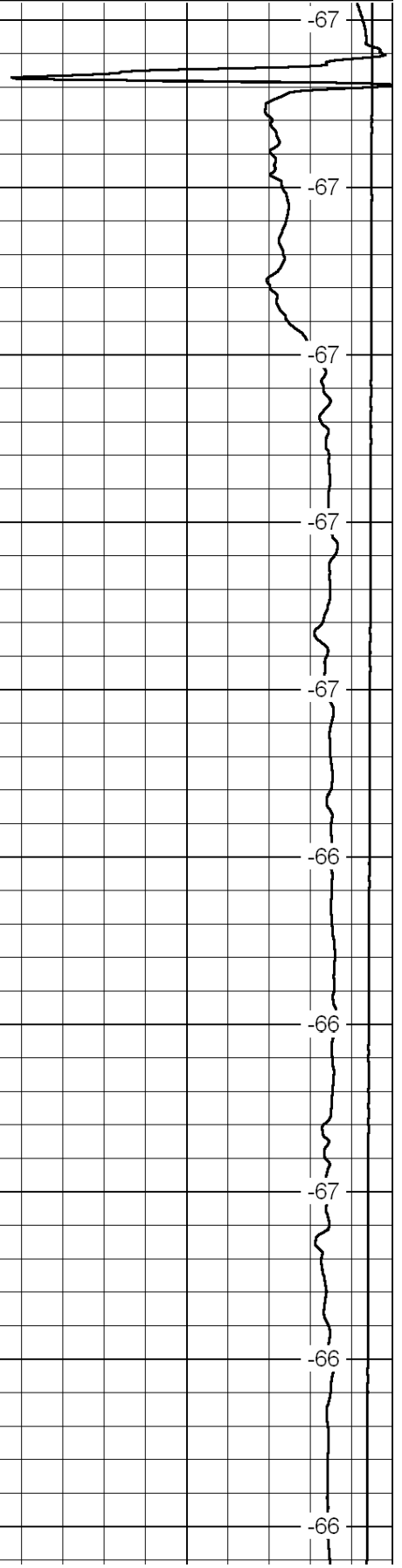
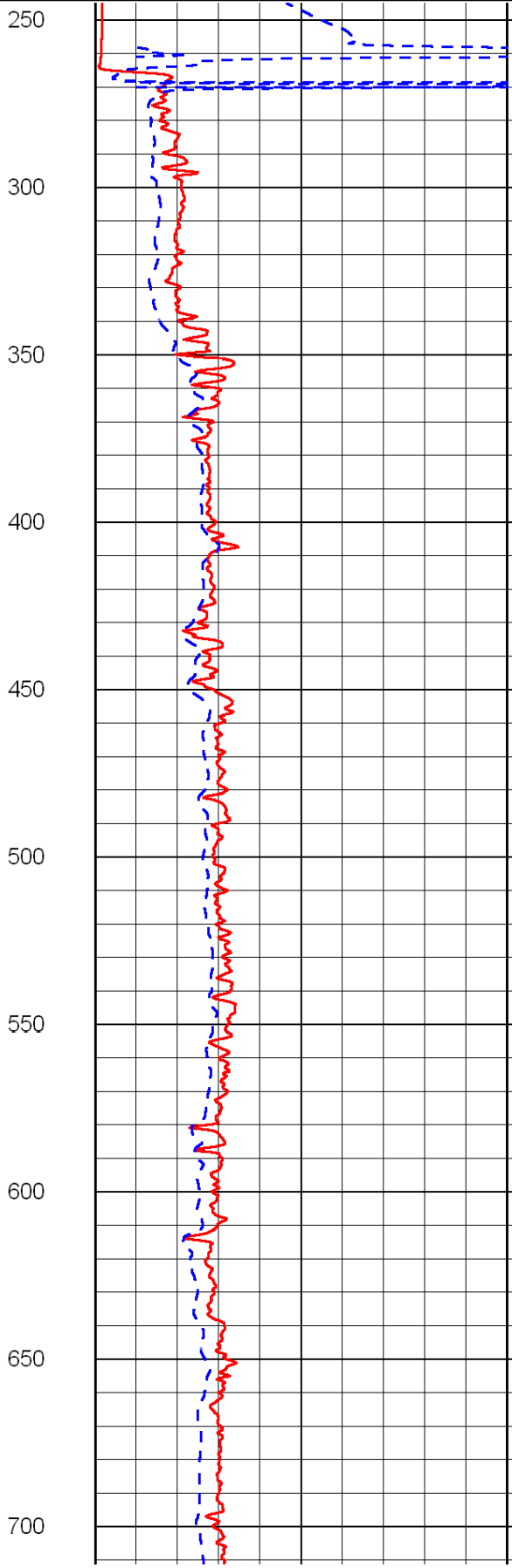
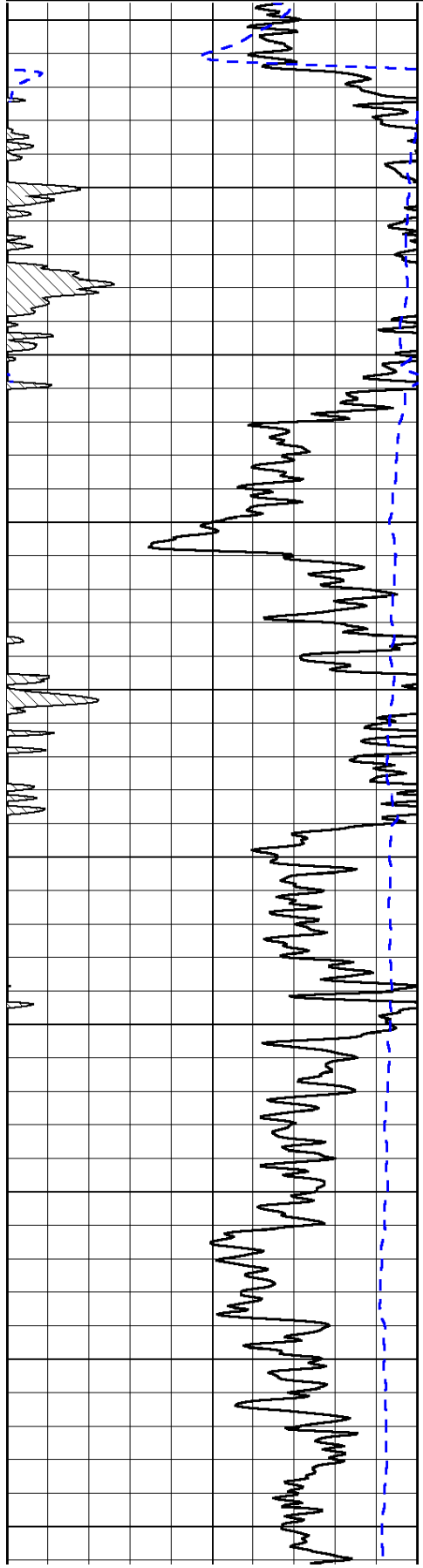
0	Gamma Ray	150
-200	SP (mV)	0

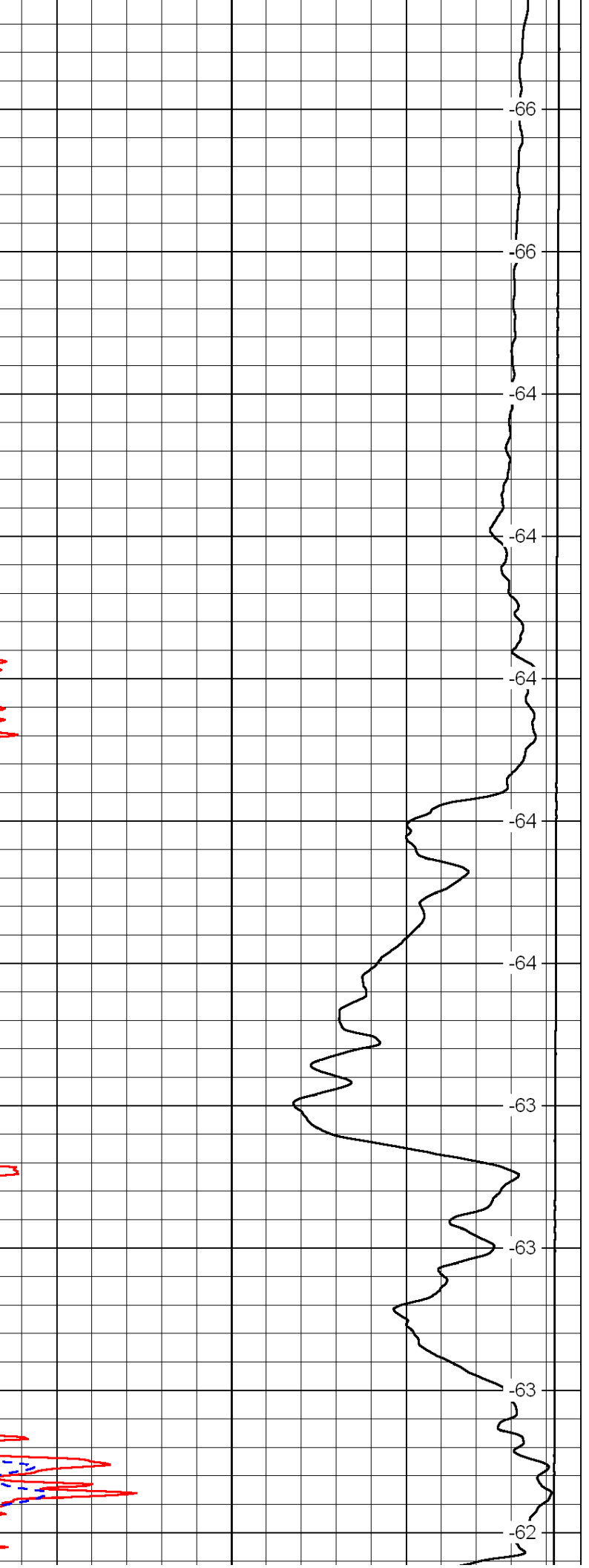
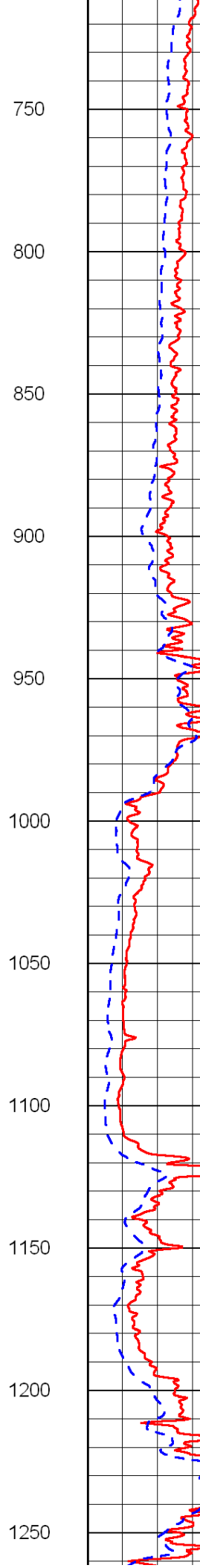
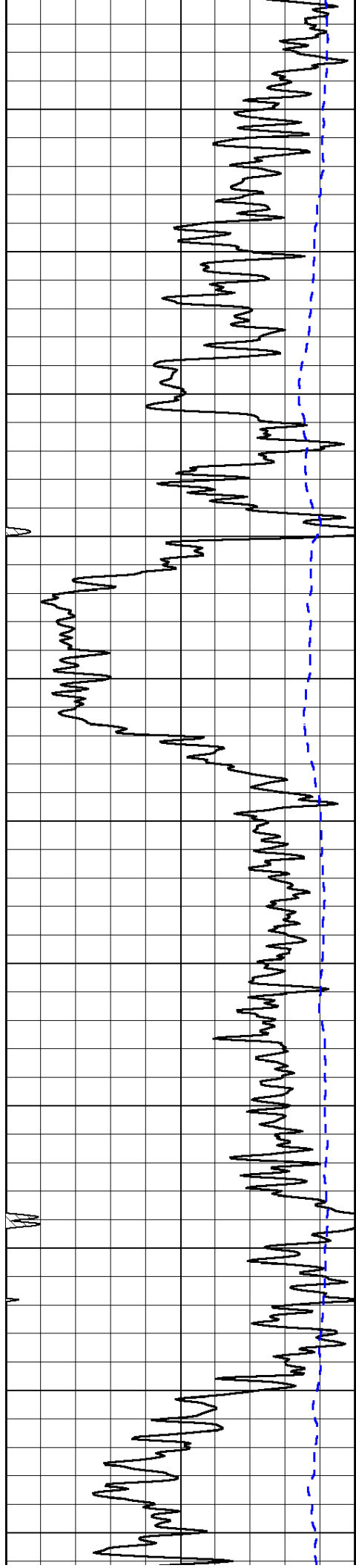
0	Shallow Resistivity	50
0	Deep Resistivity	50

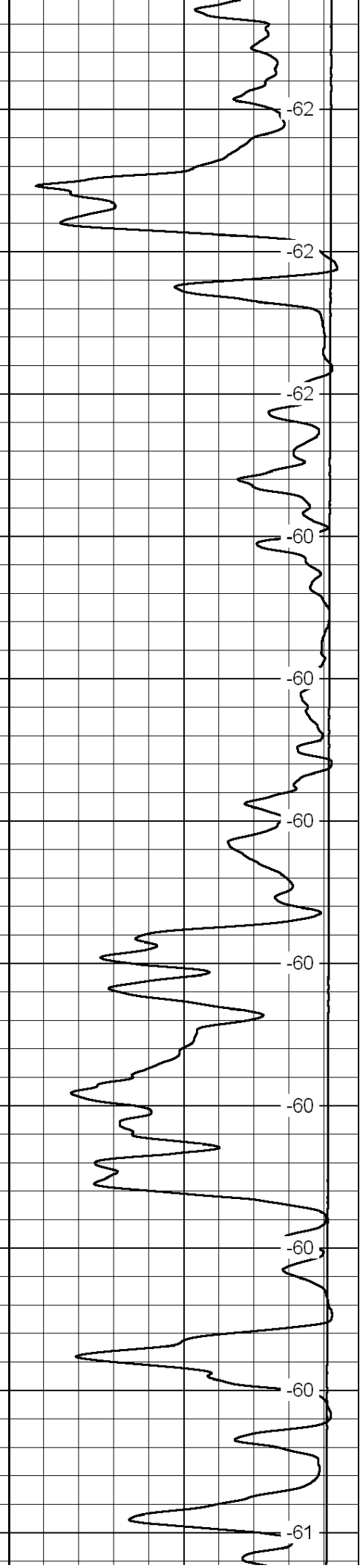
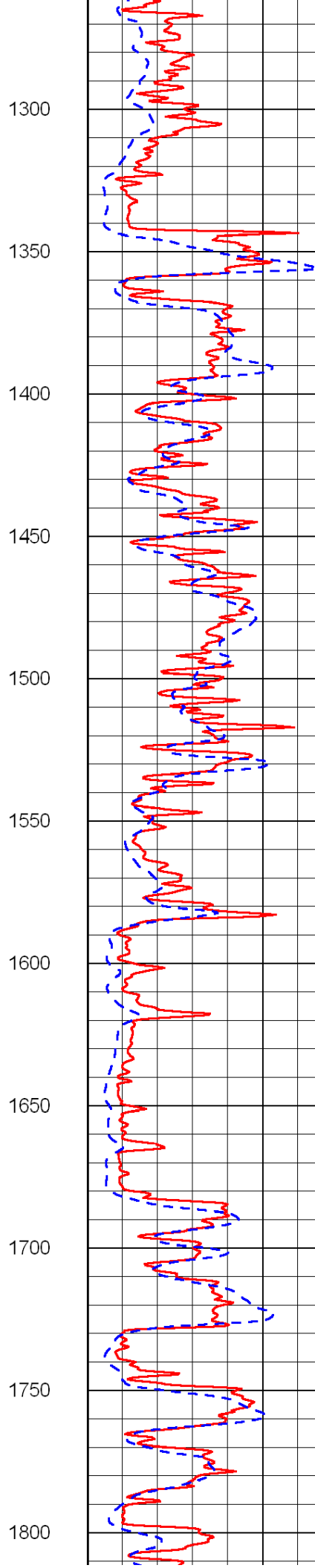
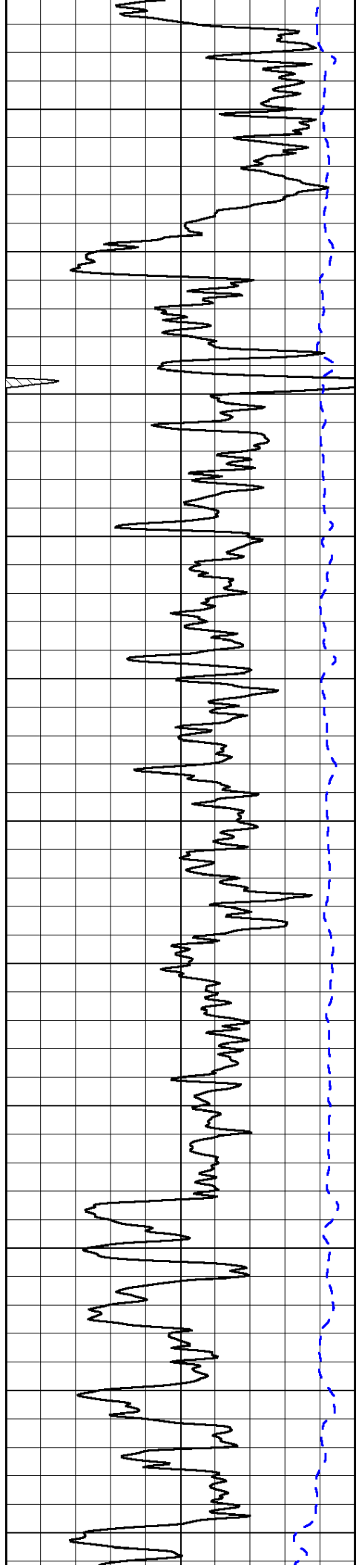
LSPD

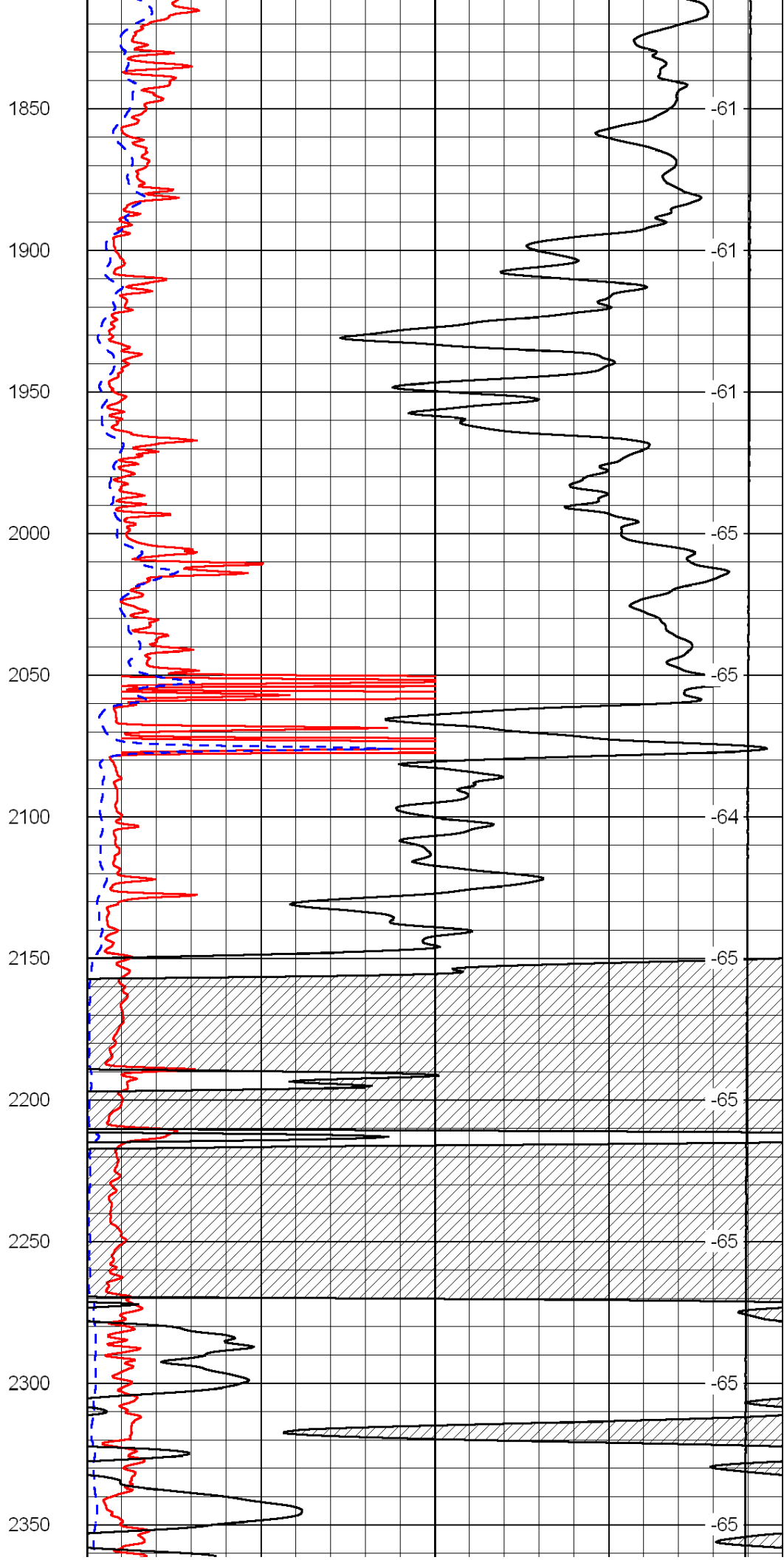
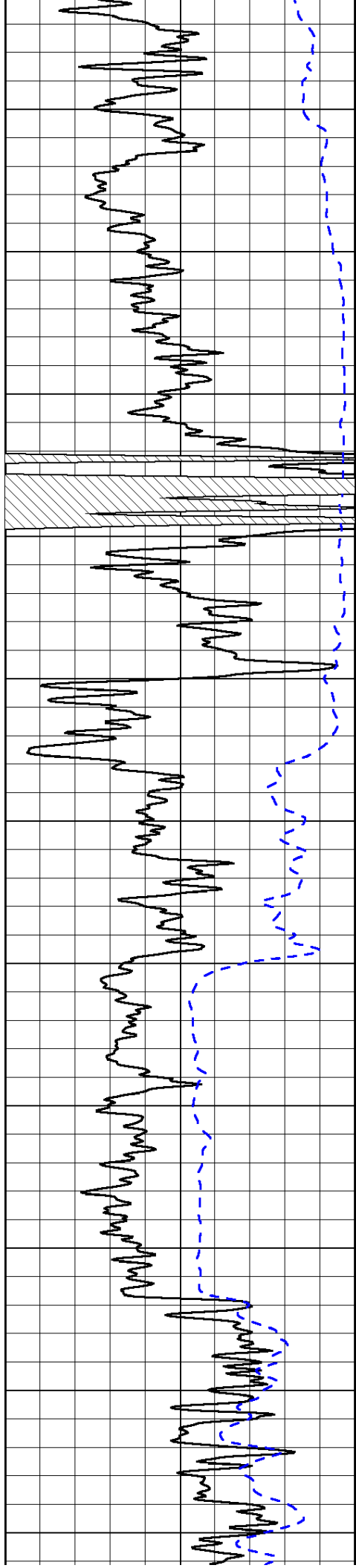
1000	Conductivity	0
15000	Line Tension	0

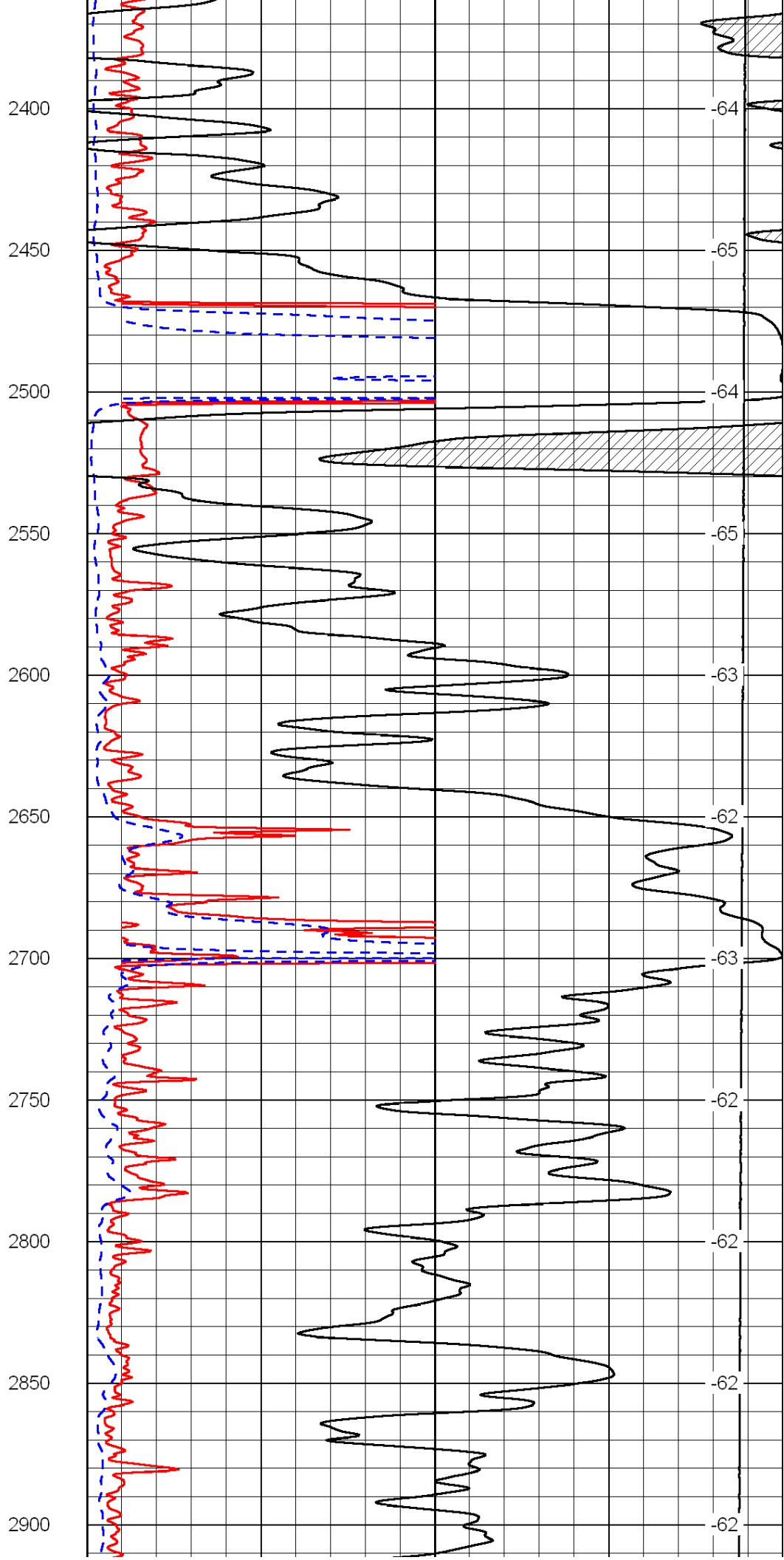
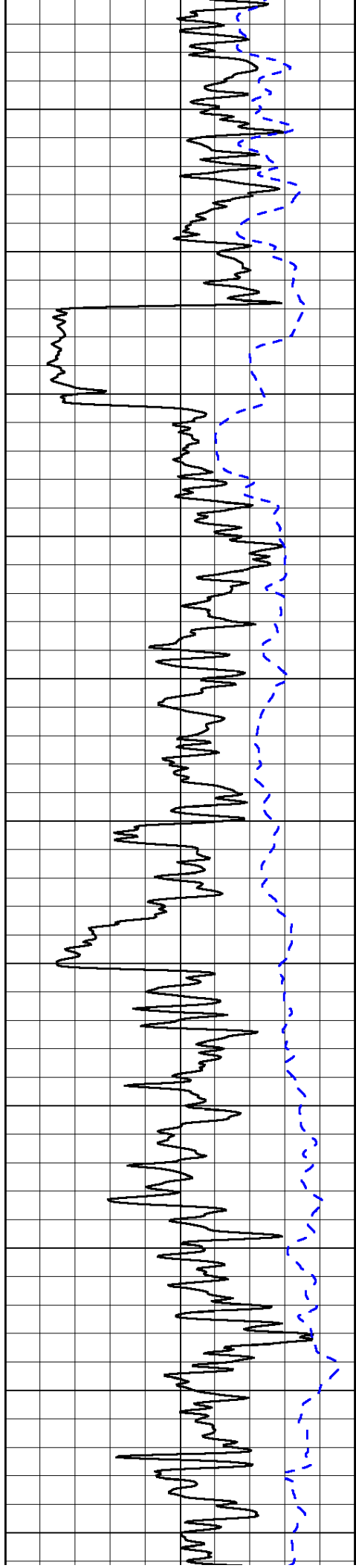
50	Shallow Resistivity	500
50	Deep Resistivity	500

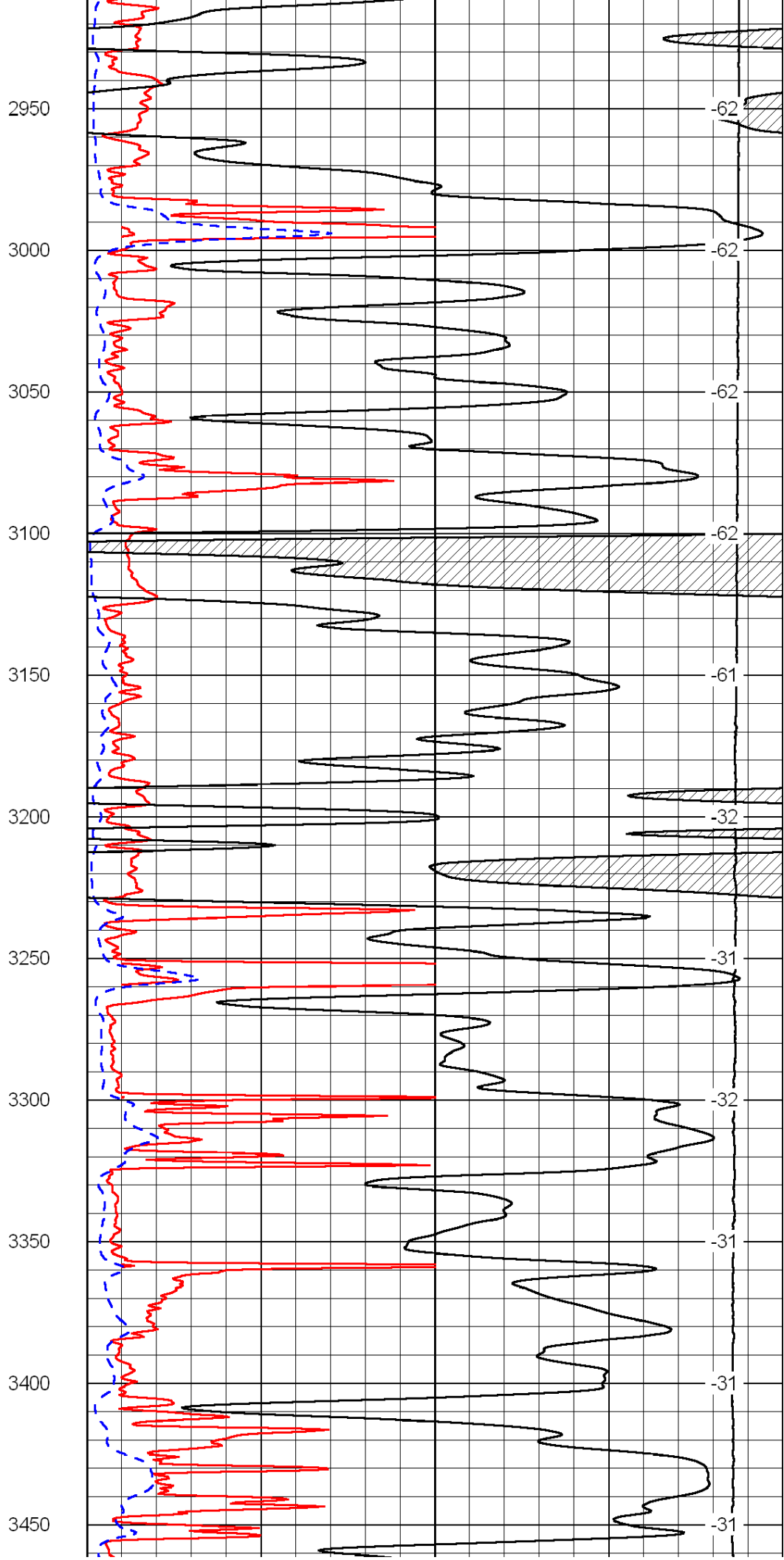
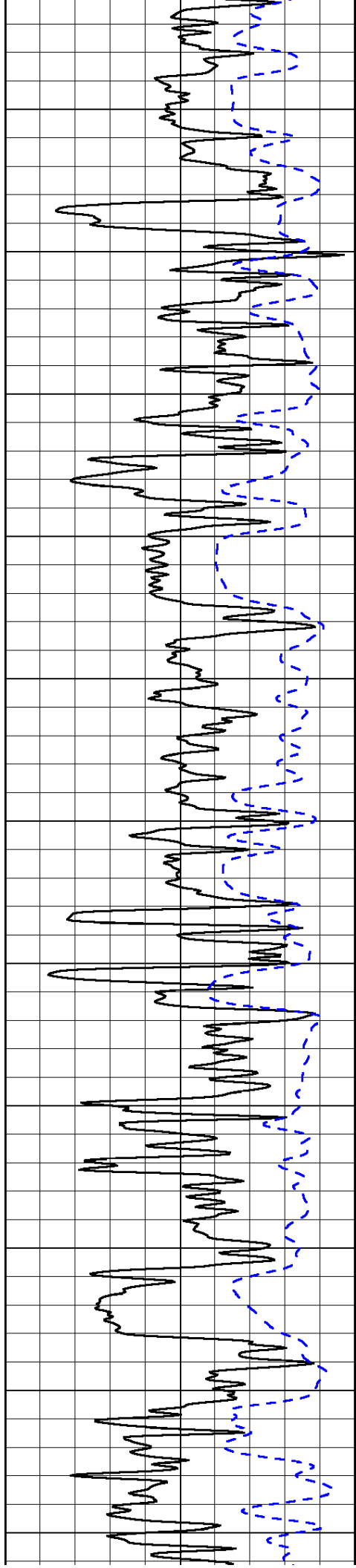


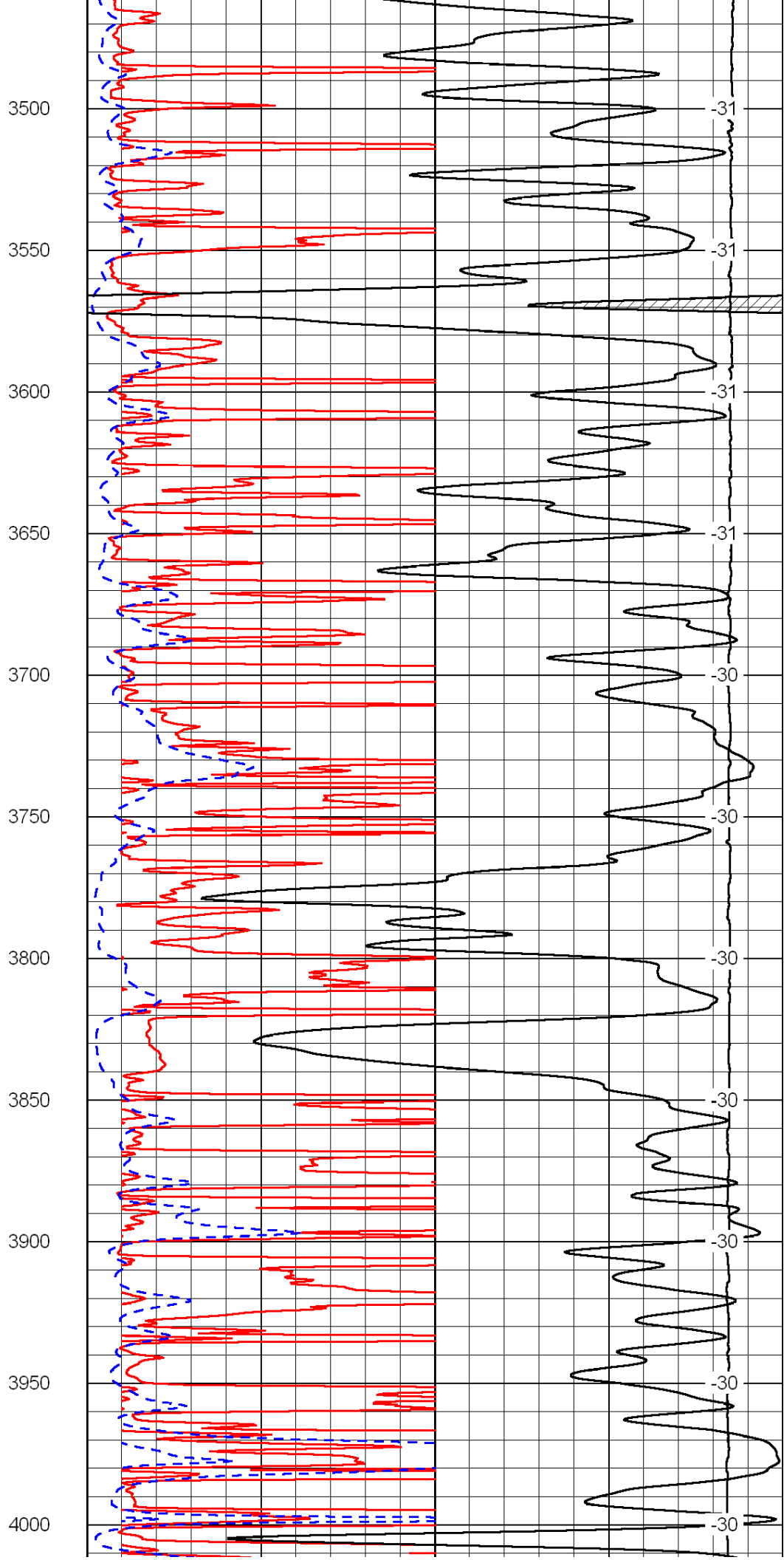
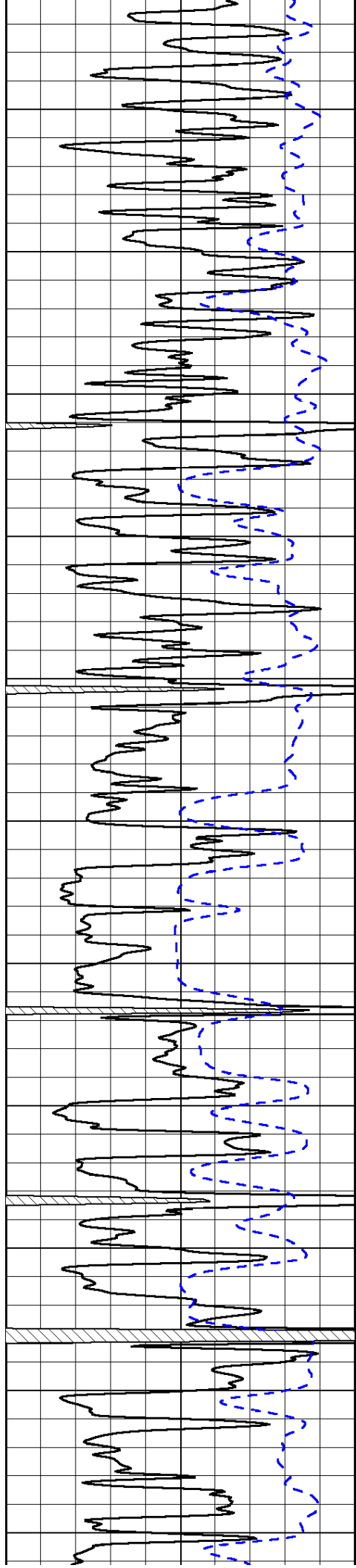


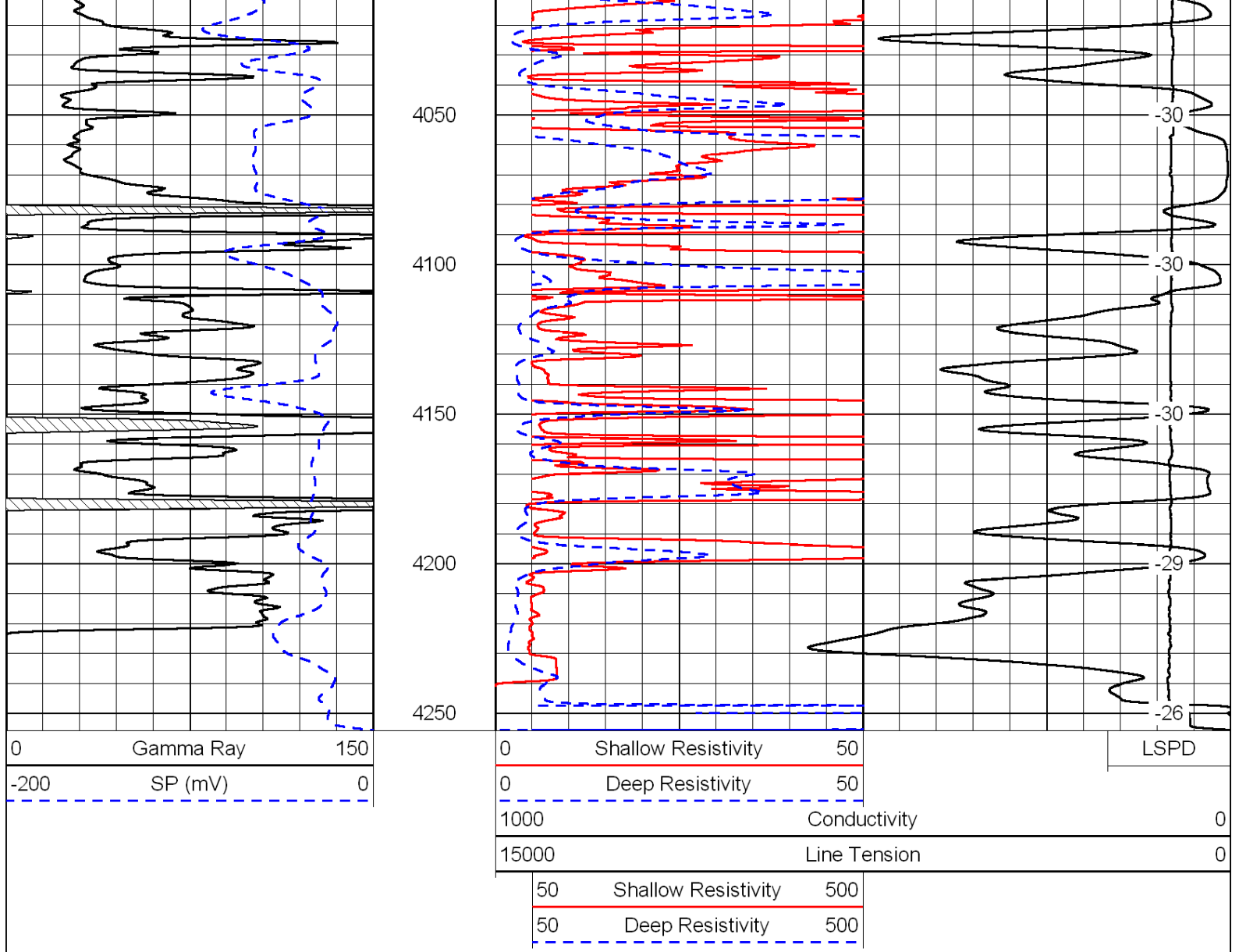




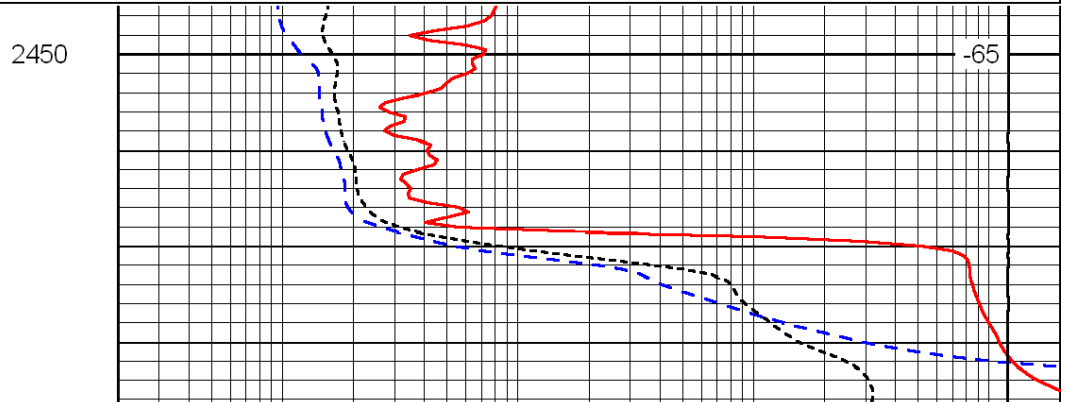
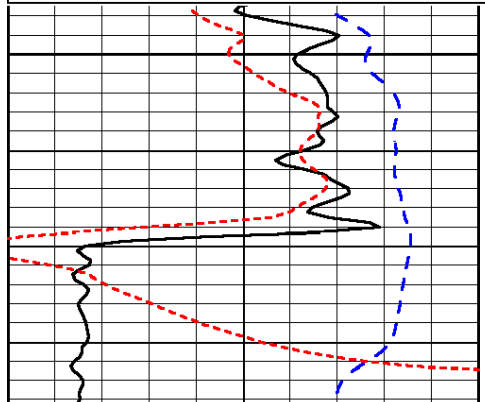
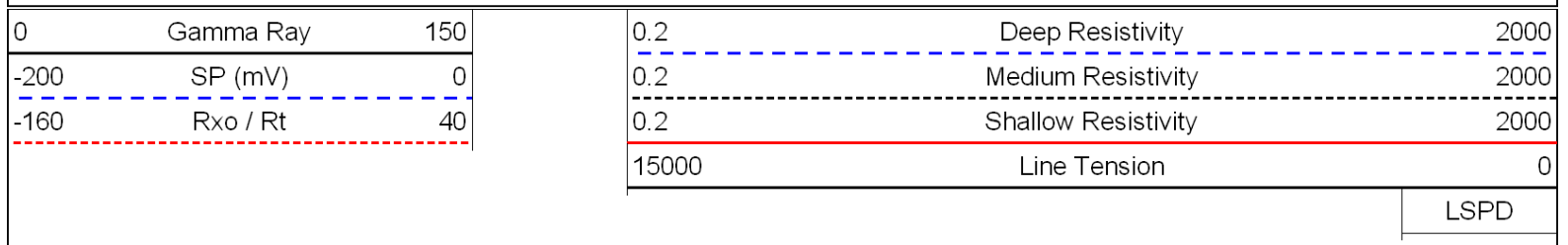


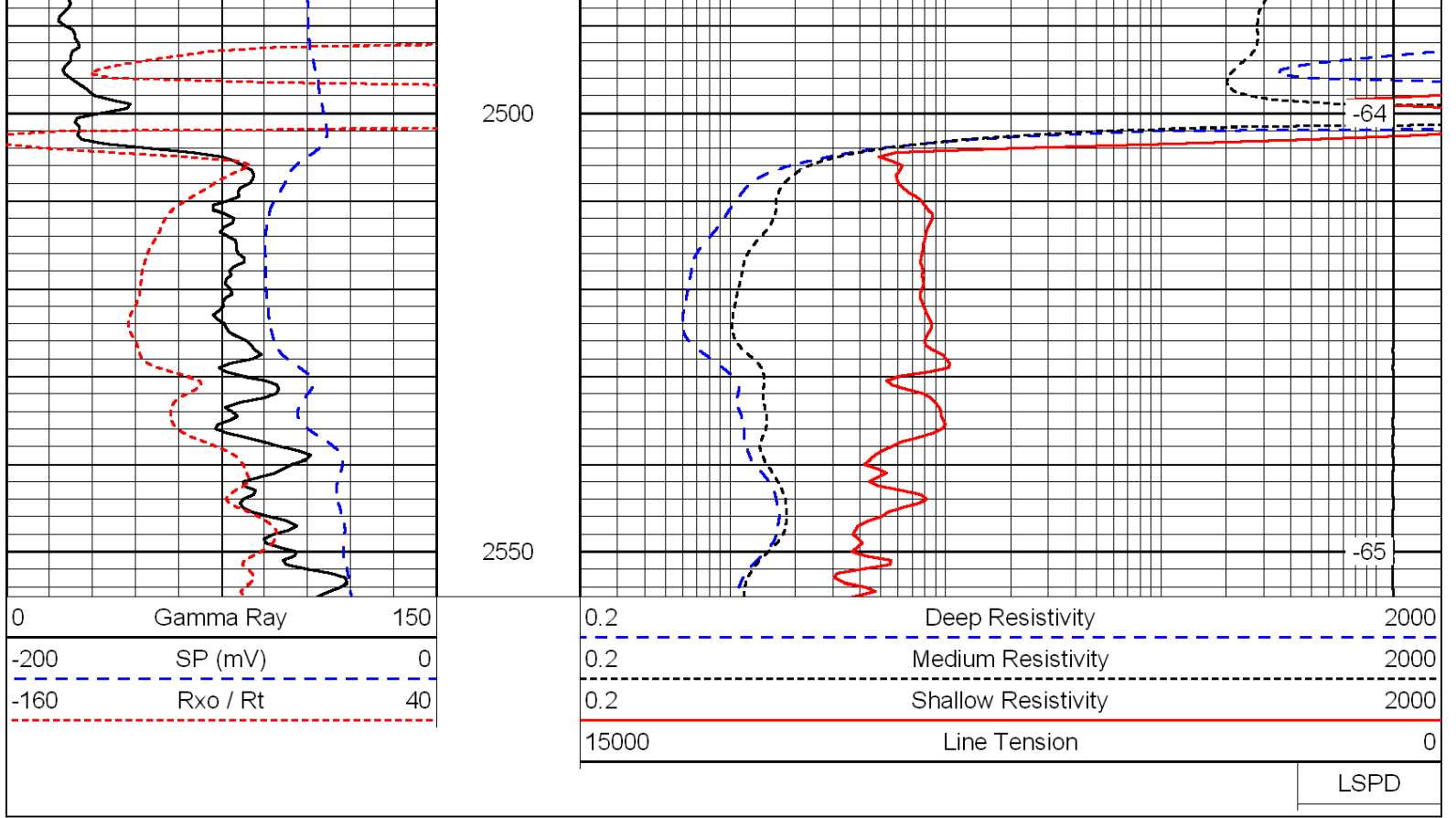




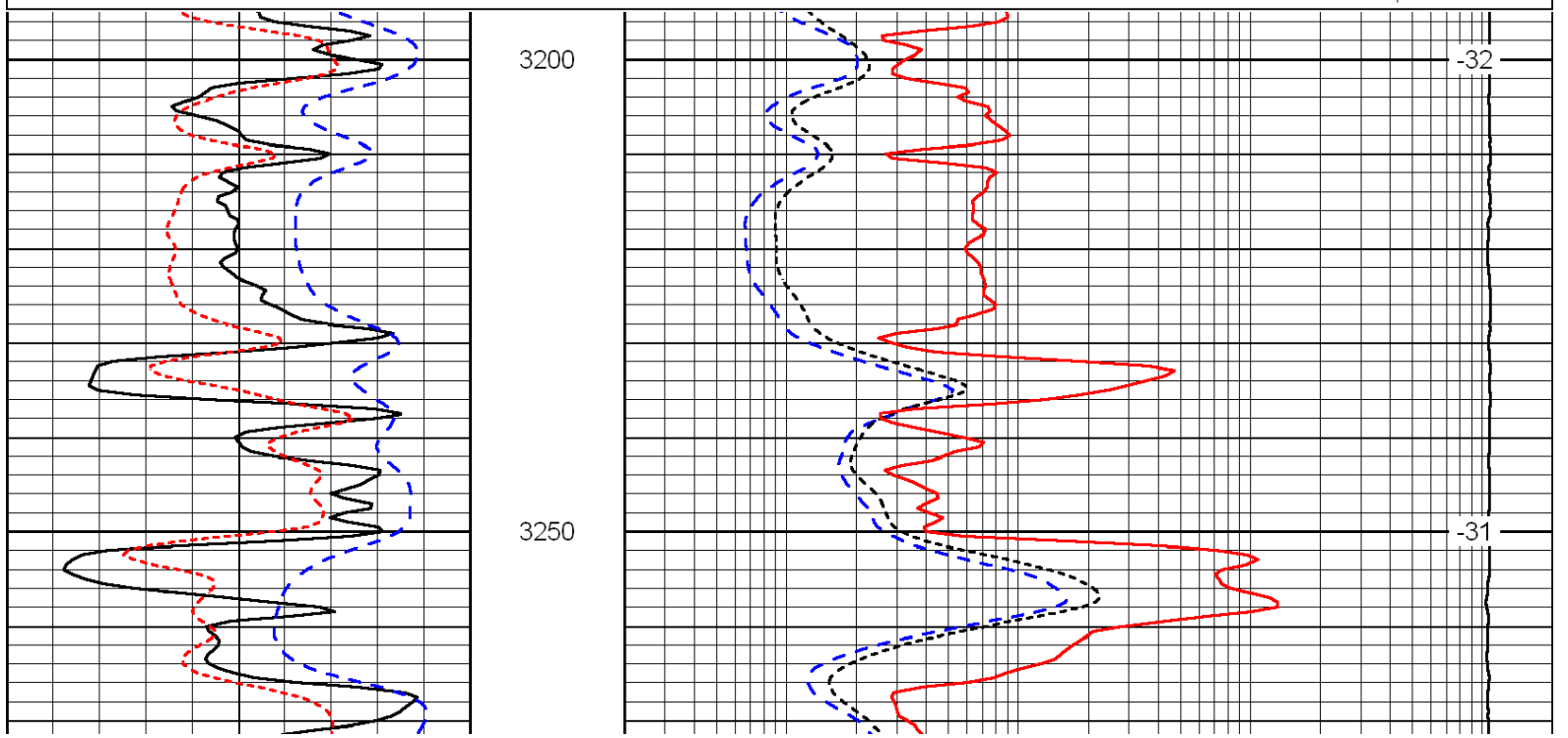
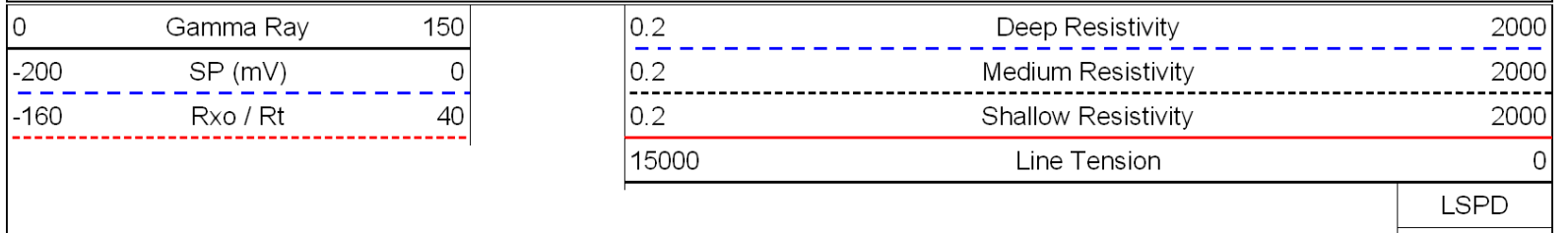


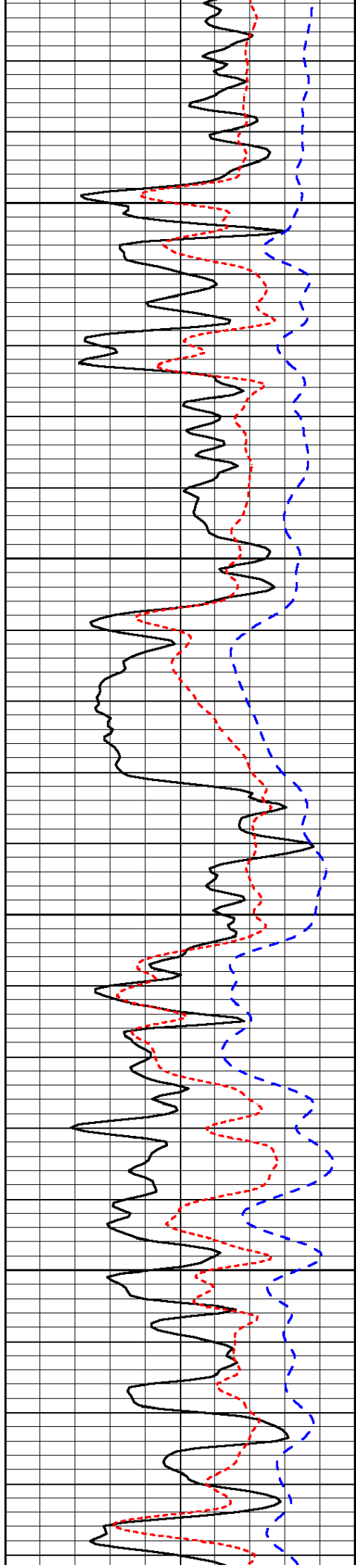
Database File: c:\warrior\data\castle resources_mary no. 1\castle_mary_1hd.db
 Dataset Pathname: dil/casstk
 Presentation Format: dil
 Dataset Creation: Thu Feb 17 13:11:20 2011
 Charted by: Depth in Feet scaled 1:240





Database File: c:\warrior\data\castle resources_mary no. 1\castle_mary_1hd.db
 Dataset Pathname: dil/casstk
 Presentation Format: dil
 Dataset Creation: Thu Feb 17 13:11:20 2011
 Charted by: Depth in Feet scaled 1:240



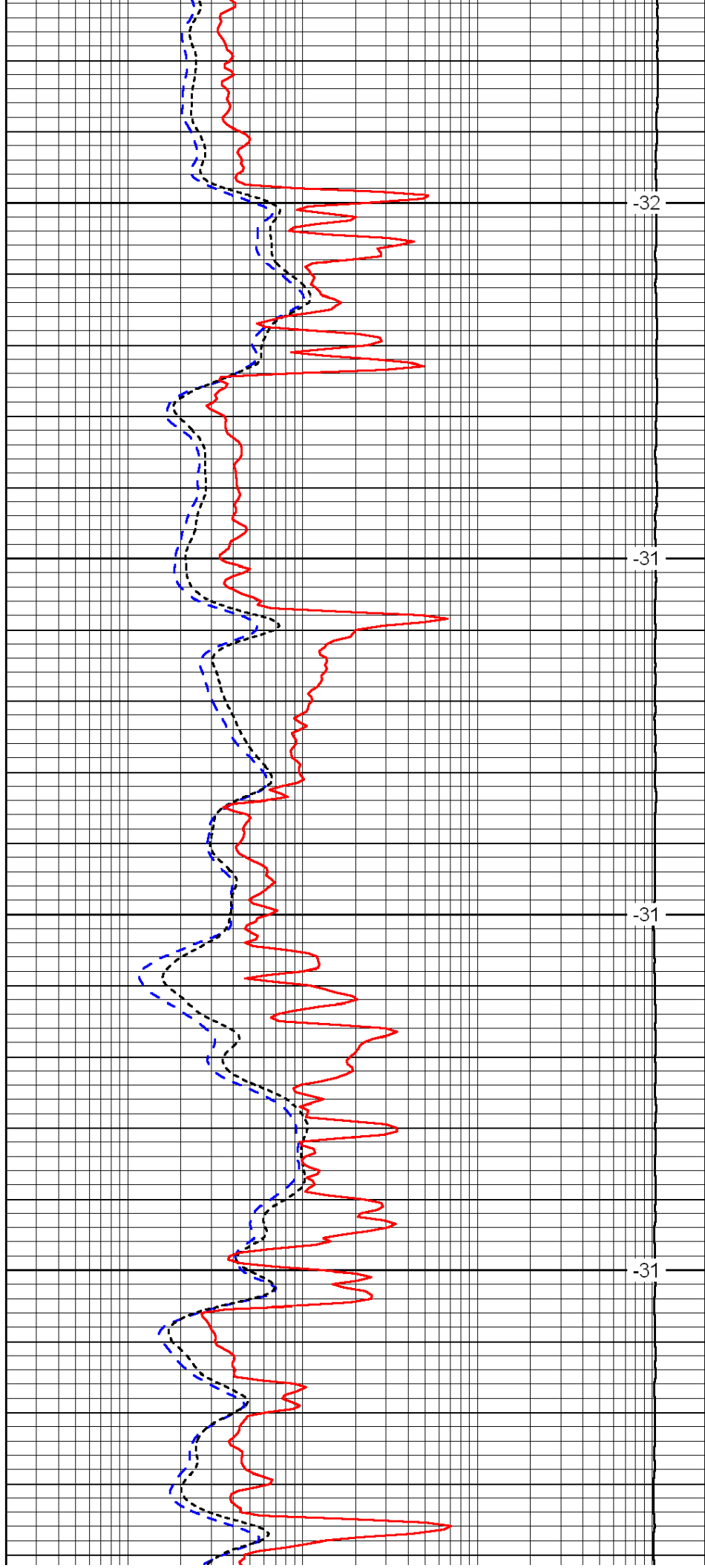


3300

3350

3400

3450

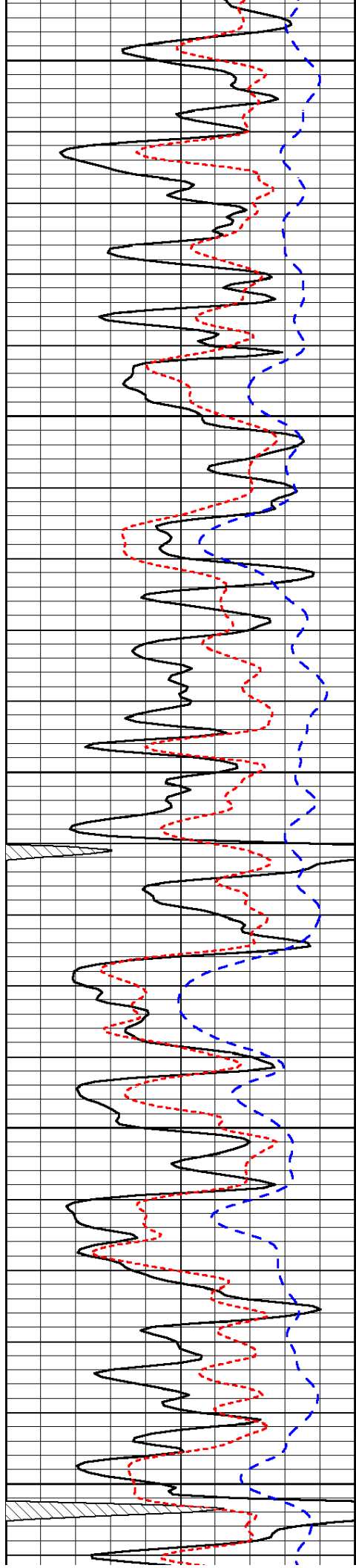


-32

-31

-31

-31



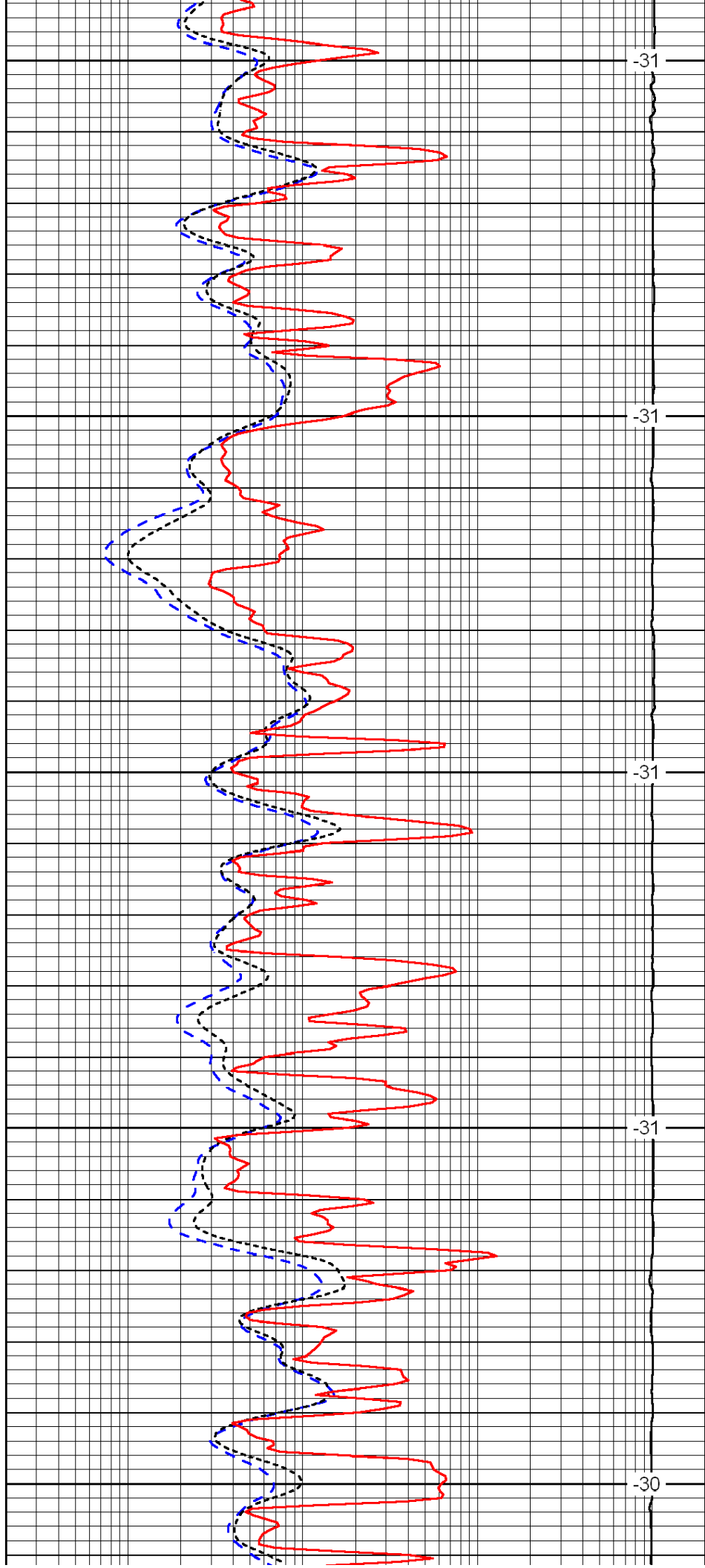
3500

3550

3600

3650

3700



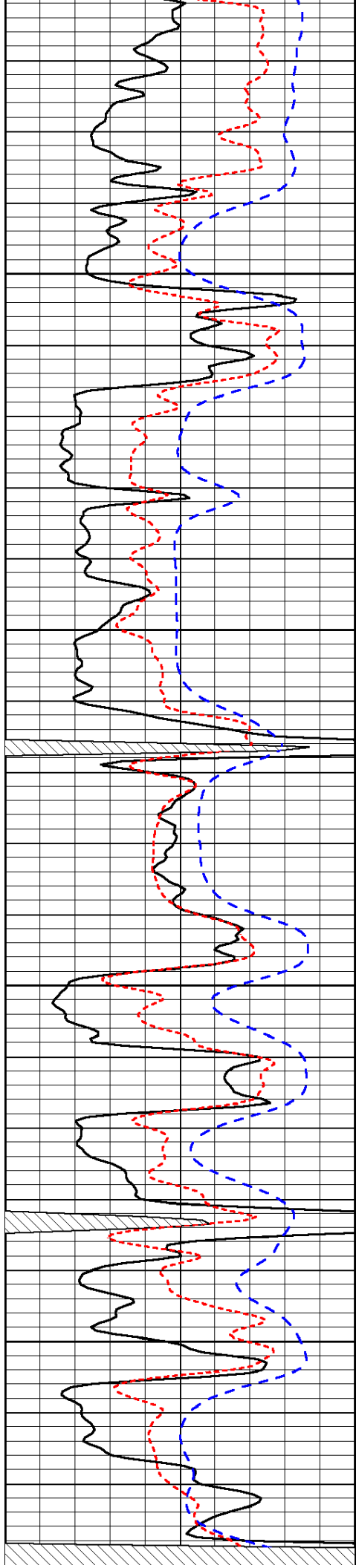
-31

-31

-31

-31

-30

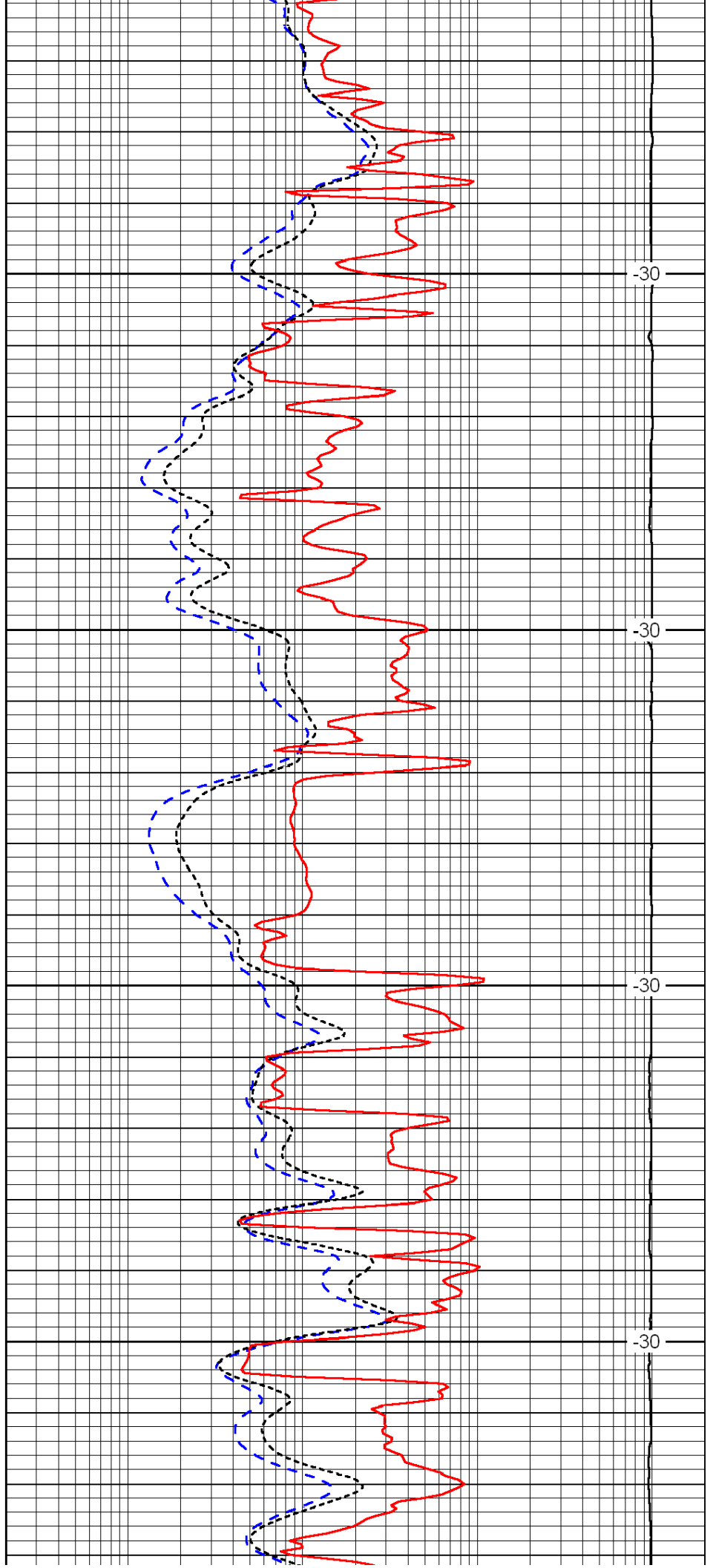


3750

3800

3850

3900

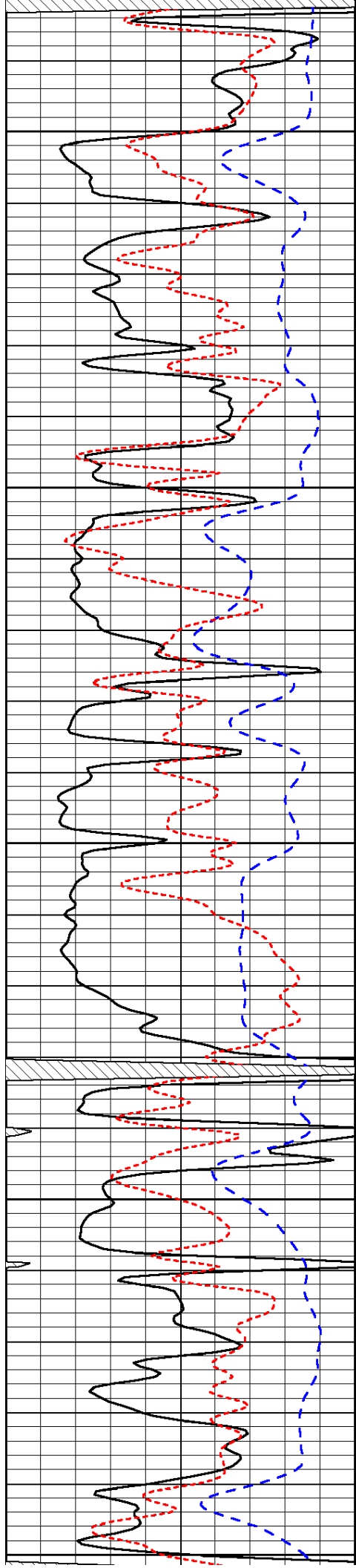


-30

-30

-30

-30



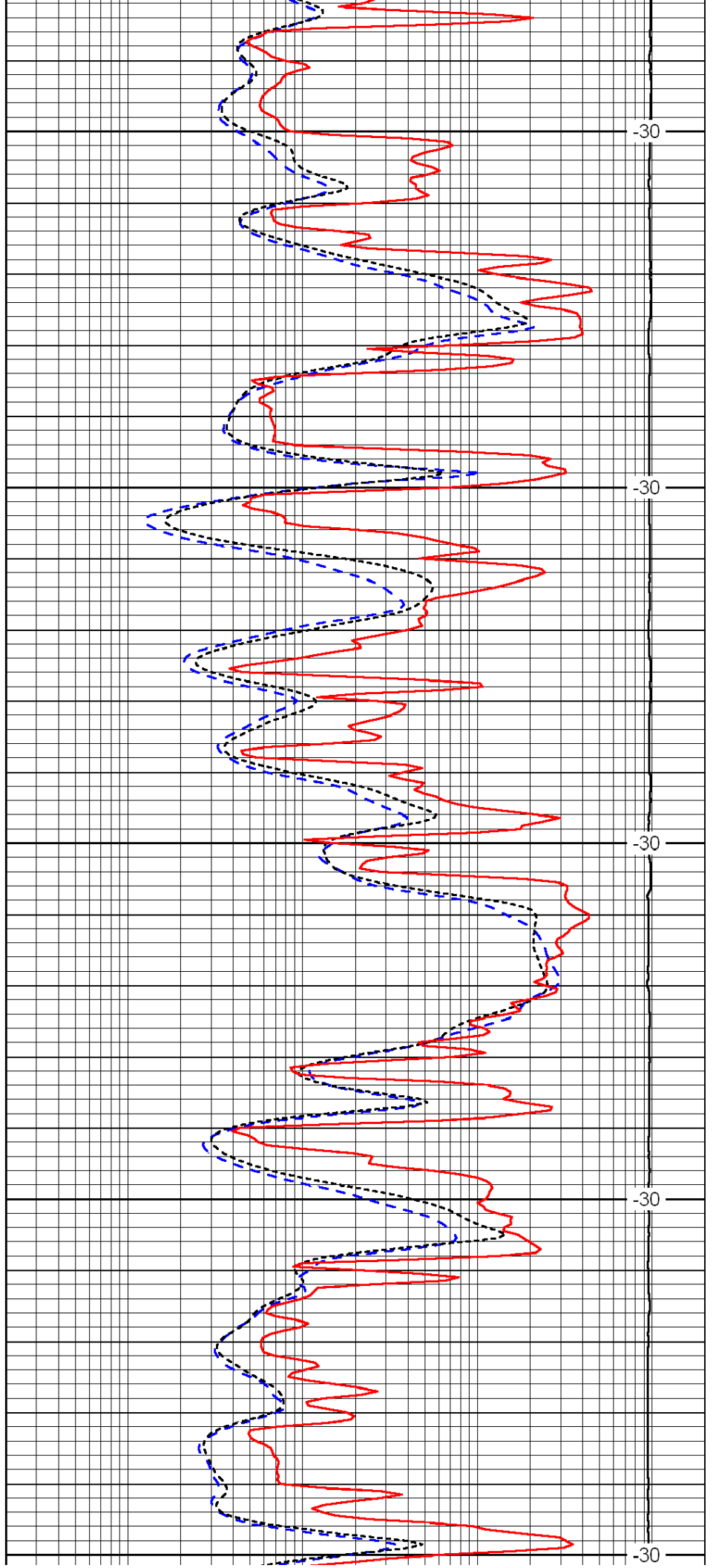
3950

4000

4050

4100

4150



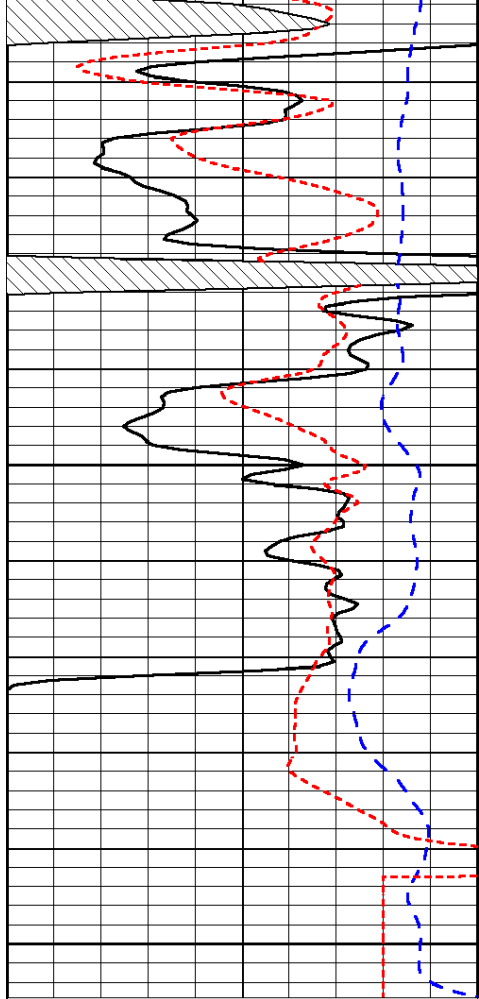
-30

-30

-30

-30

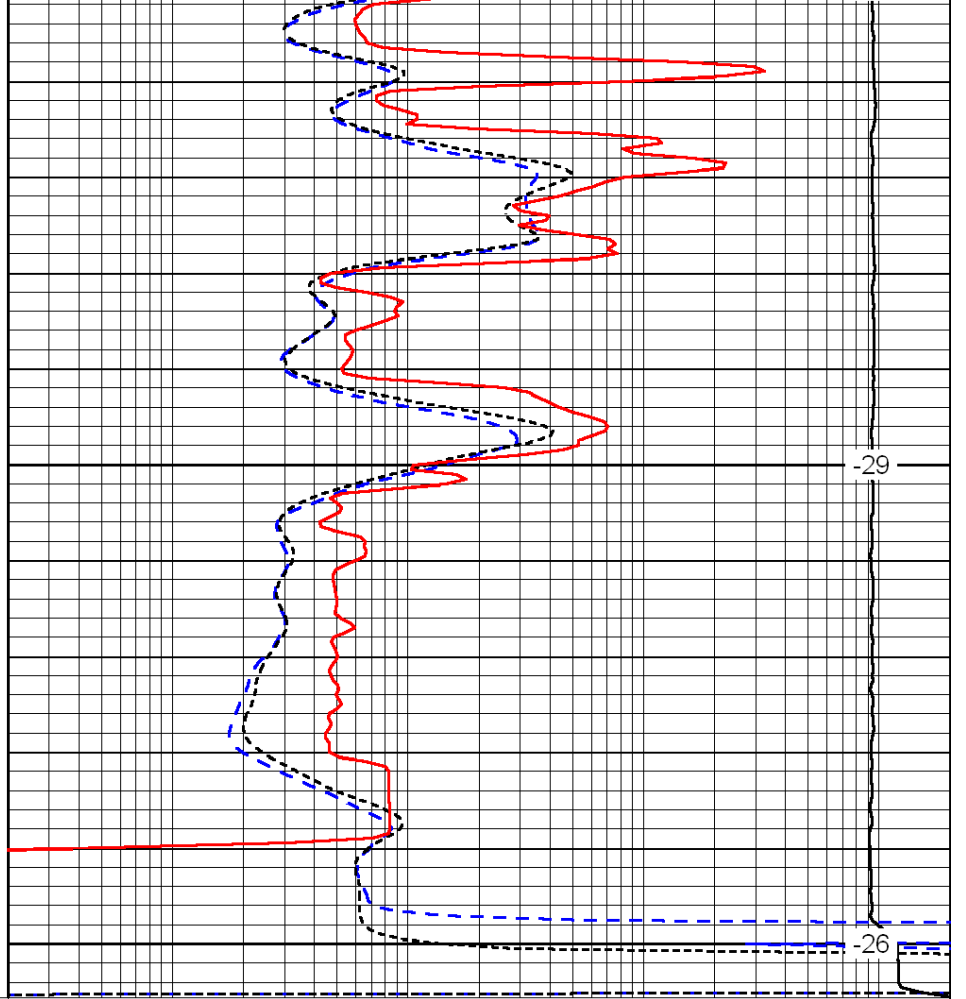
-30



4200

4250

0	Gamma Ray	150
-200	SP (mV)	0
-160	Rxo / Rt	40



-29

-26

0.2	Deep Resistivity	2000
0.2	Medium Resistivity	2000
0.2	Shallow Resistivity	2000
15000	Line Tension	0

LSPD