

# Segmented Bond Log Gamma Ray/CCL

File No: 523341  
API No: 15-077-21756

**Company** SHELL OIL COMPANY  
**Well** SNEFF No. 19-1H  
**Field** WILDCAT  
**County** HARPER  
**State** KANSAS

**Location**  
NE SW SW SE  
528' FSL & 2140' FEL  
SEC 19 TWP 33S RGE 8W

**Other Services**  
JC/GR 6.05  
SET PLUG

Permanent Datum G.L. \_\_\_\_\_ Elevation 1317 ft  
Log Measured From D.F. 27 ft Above P. D.  
Drill Measured From DRILL FLOOR

**Elevations**  
KB N/A  
DF 1344 ft  
GL 1317 ft

Date	1 DECEMBER 2011
Run	ONE
Service Order	523341
Depth Driller	8646 ft
Depth Logger	4610 ft
Bottom Logged Interval	4600 ft
Top Logged Interval	1000 ft
Time Started	17:00
Time Finished	22:30
Operator Rig Time	5.5 HOURS
Type of Fluid In Hole	MUD
Fluid Density	9 lbm/gal
Salinity	N/A
Fluid Level	FULL
Logged Cement Top	1338 ft
Wellhead Pressure	1500 psi
Maximum Hole Deviation	60 deg
Nominal Logging Speed	30 fpm
Maximum Recorded Temperature	N/A
Reference Log	N/A
Reference Log Date	N/A
Equipment No.	4247
Location	WWD, OK
Recorded By	ED NORBURY
Witnessed By	MR. LEE ROTHER

- FOLD HERE

In making interpretations of logs, our employees will give the customer the benefit of their best judgement. But since all interpretations are opinions based on inferences from electrical or other measurements, we cannot, and we do not guarantee the accuracy or correctness of any interpretation. We shall not be liable or responsible for any loss, cost, damages, or expenses whatsoever incurred or sustained by the customer resulting from any interpretation made by any of our employees.

Borehole Record		
Bit Size	From	To

Casing Record				
Size	Weight	Grade	From	To
7 in	23 lbm/ft	N/A	0 ft	5000 ft

**Remarks**

LOG CORRELATED TO SHORT JOINT AT 3473-3493 FT.  
ATTENUATION CURVES AND CEMENT MAP AFFECTED BY DEVIATION BELOW KICK OFF POINT  
ESTIMATED CEMENT TOP RECORDED AT 1338 FT.  
LOG RECORDED AS PER CUSTOMER REQUEST.

Equipment Data	

Run	Trip	Tool	Series Number	Serial Number	Position
1	1	CCL	2346XA		CENTRALIZED
1	1	GAMMA RAY	1339XA	10216912	CENTRALIZED
1	1	TELEMETRY	1633EA	117100	CENTRALIZED
1	1	SBT	1424XA	119552	CENTRALIZED
1	1	VDL	1424PA	118033	CENTRALIZED

***MAIN PASS  
RECORDED AT 0 PSI***

### SBT NORMALIZATION RESULTS

CURVE	PARAMETER	VALUE	UNITS	TOP	BOTTOM	COMMENT
ATC1	seg1 cnormf1	-0.072	db/ft	793.227	4599.621	
ATC2	seg2 cnormf2	0.600	db/ft	793.227	4599.621	
ATC3	seg3 cnormf3	-1.077	db/ft	793.227	4599.621	
ATC4	seg4 cnormf4	-1.602	db/ft	793.227	4599.621	
ATC5	seg5 cnormf5	1.573	db/ft	793.227	4599.621	
ATC6	seg6 cnormf6	0.577	db/ft	793.227	4599.621	
ATC1	seg1 dnormf1	-0.072	db/ft	793.227	4599.621	Good Confidence
ATC2	seg2 dnormf2	0.600	db/ft	793.227	4599.621	Good Confidence
ATC3	seg3 dnormf3	-1.077	db/ft	793.227	4599.621	Good Confidence
ATC4	seg4 dnormf4	-1.602	db/ft	793.227	4599.621	Good Confidence
ATC5	seg5 dnormf5	1.573	db/ft	793.227	4599.621	Good Confidence
ATC6	seg6 dnormf6	0.577	db/ft	793.227	4599.621	Good Confidence

### SBT PROCESSING

MEASUREMENT TYPE	PARAMETER	VALUE	UNITS	TOP	BOTTOM
amp	fpamp	69.513	mv	782.227	4599.000
amp	fpattn	0.843	dB/ft	782.227	4599.000
atc	dbspread	4.578	dB/ft	782.227	4599.000
atc	spacing	0.655	feet	782.227	4599.000
cemr	casing od	7.000	inches	782.227	4599.000
cemr	casing wt	23.000	lbm/ft	782.227	4599.000

cemr	compress	1500.000	psi	782.227	4599.000
CN	Bit Size	7.875	inches	793.227	4599.621
CN	Casing Thickness	0.318	inches	782.227	4599.000
CN	Casing/Cement Correction	No		793.227	4599.621
CN	CN Chism	No		793.227	4599.621
CN	Matrix	Limestone		793.227	4599.621
CN	Salinity	0.000	ppm	793.227	4599.621

## DEPTH OFFSETS

(for Acquired Curves)

SERIES	DEPTH OFFSET	ACQUIRED CURVES					
2346XA	-38.500	CCL					
2435XA	-30.250	LSN					
2435XA	-29.750	NEU	SSN				
1309XA	-29.500	GR					
1424XA	-11.000	ATC1	ATC2	ATC3	ATC4	ATC5	ATC6
		ATAV	ATMN	ATMX	AMAV	DEV	DTMN
		DTMX	RB	XATT	YATT		
1424PA	0.000	CHV	CYQ	SIG			

Created by : SBT, v5.0.003

Plotted by : PlotMgr, v5.4.504

Company : SHELL OIL COMPANY

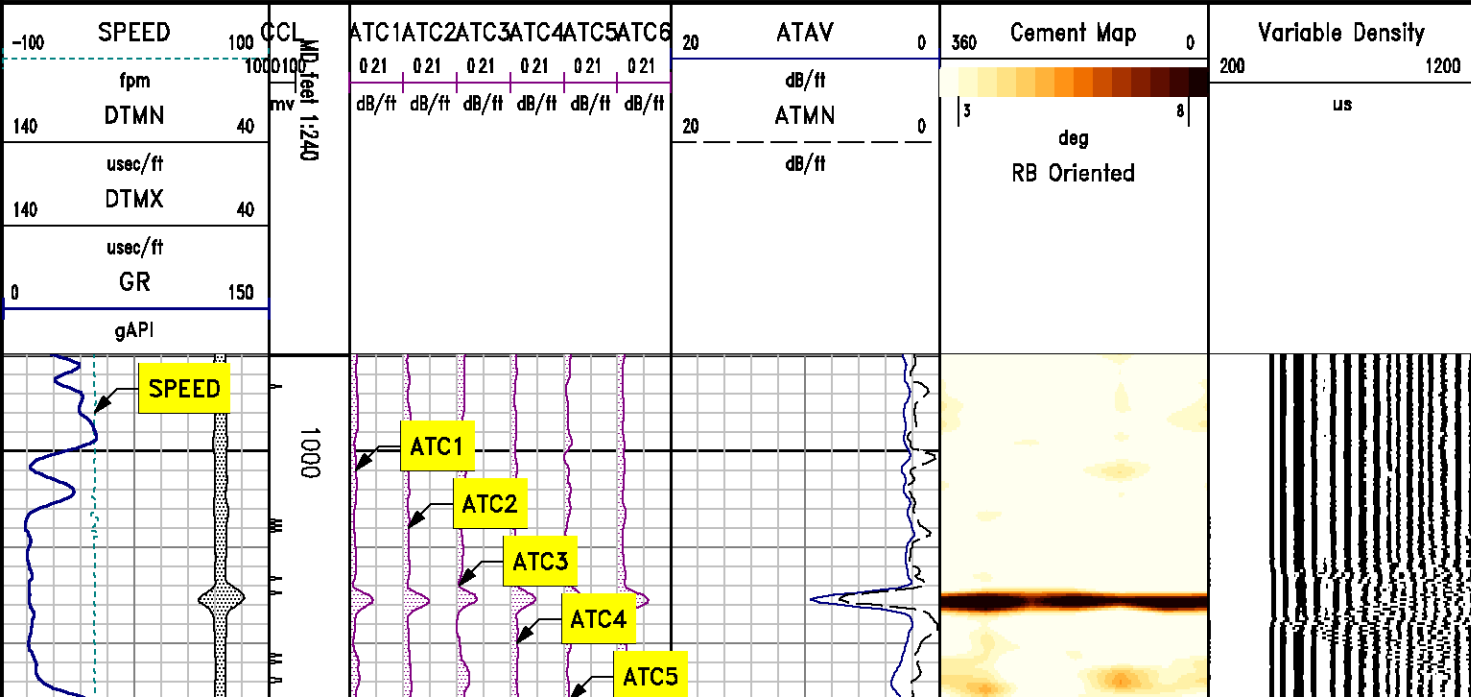
Well : SNEFF No. 19-1H

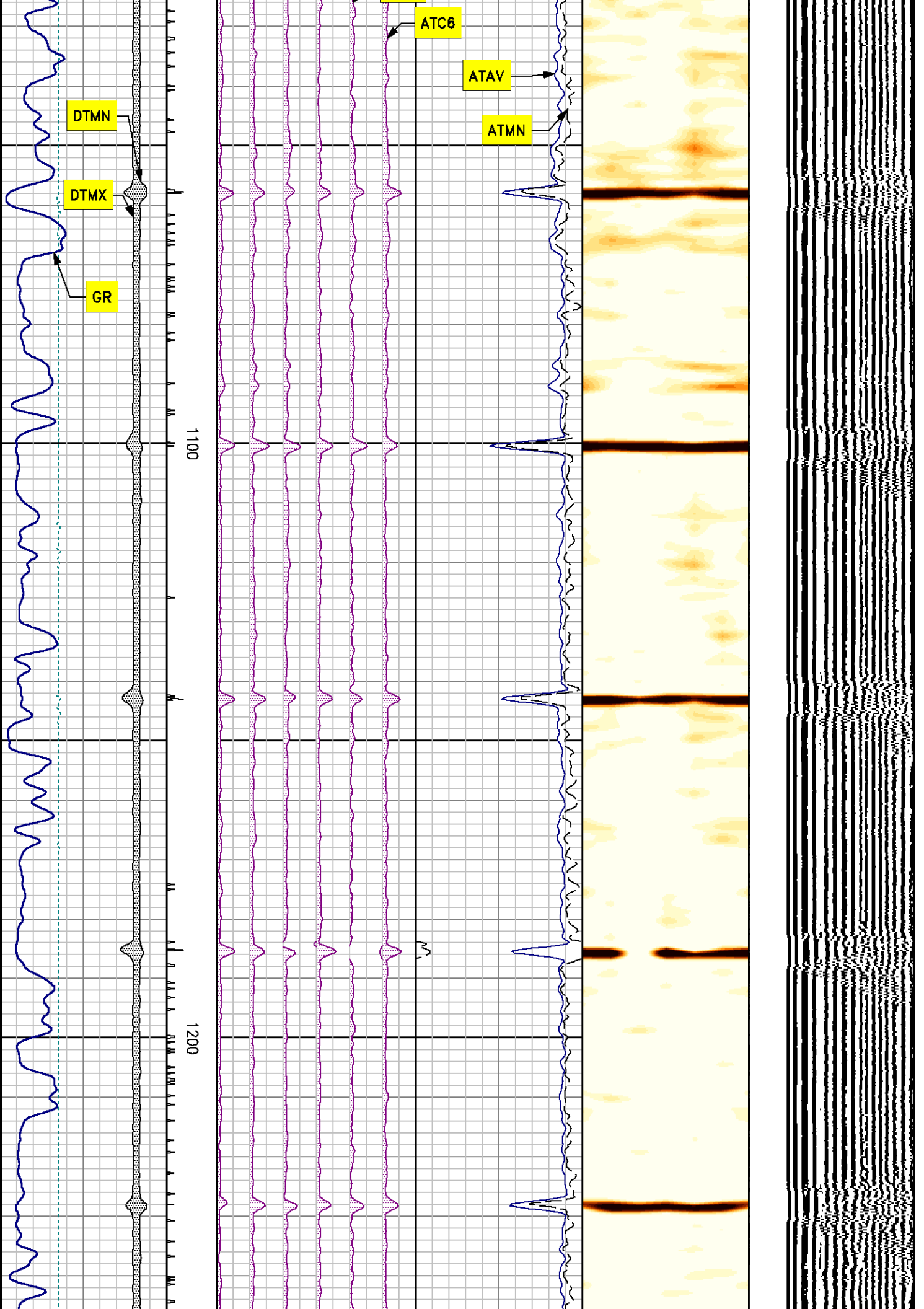
File Name : C:\WELLDATA\SBT341\MAIN LOG.xtf

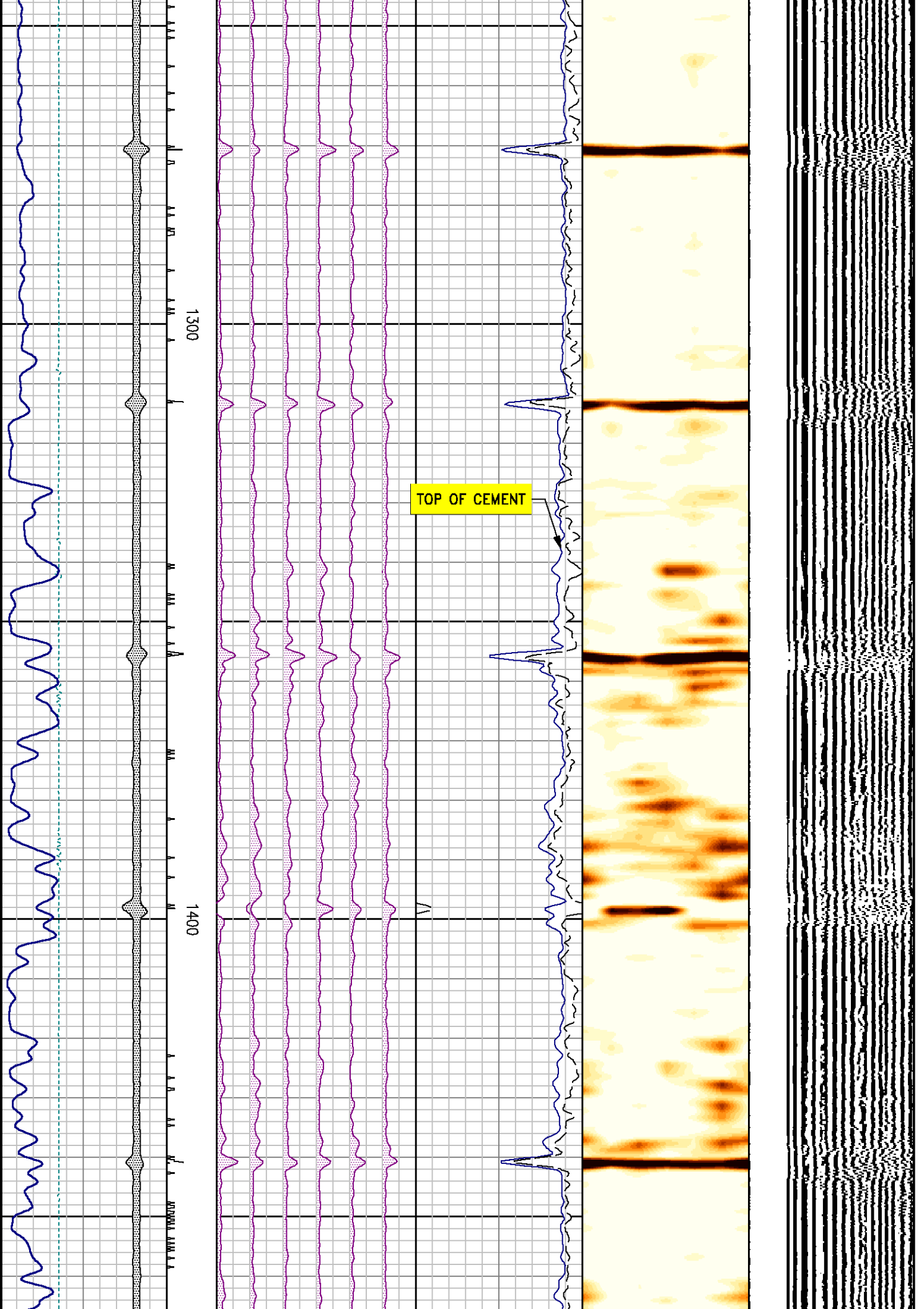
Mode : PlotMgr 5.4.504

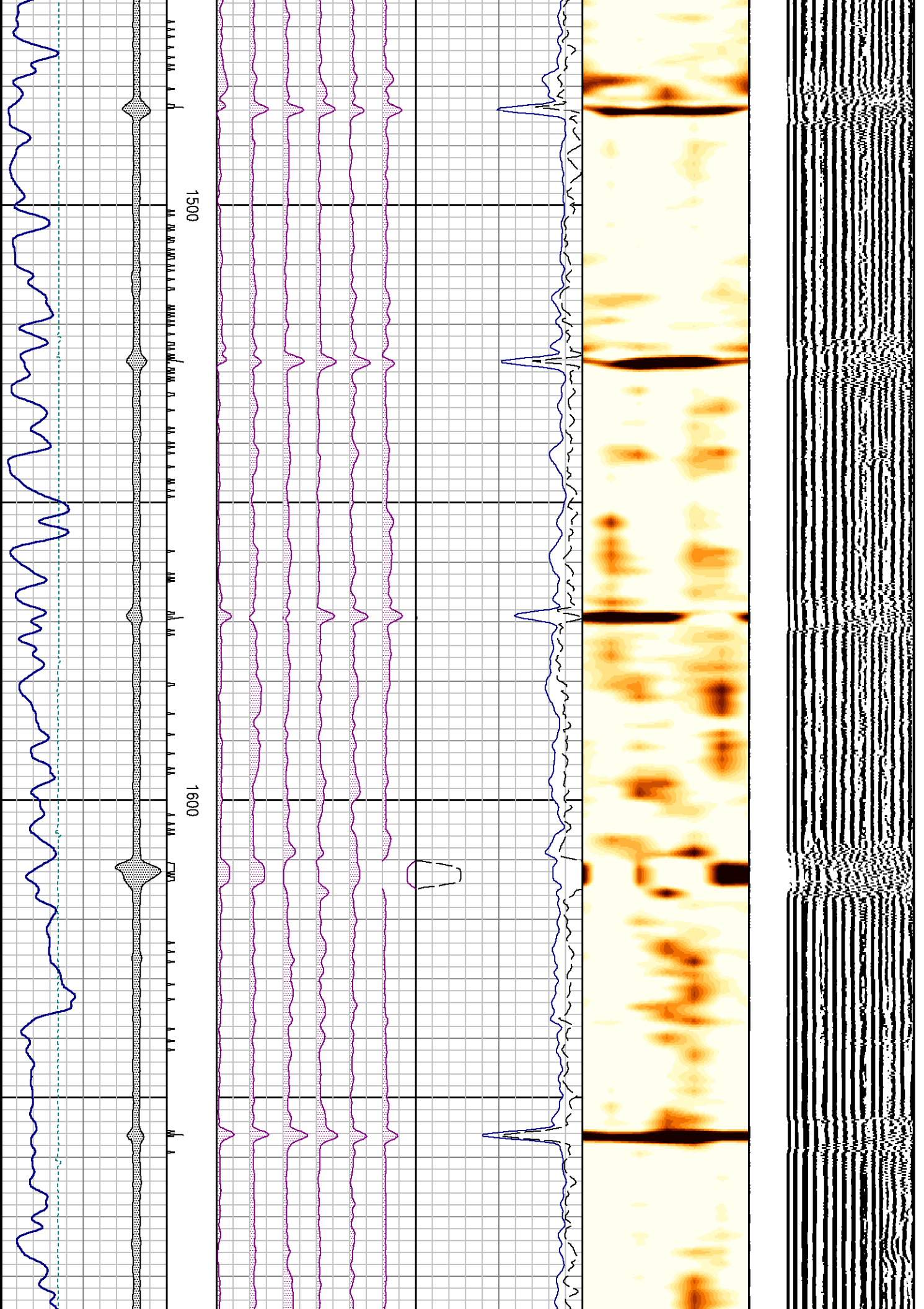
Interval : 990.00 - 4599.75 feet UP

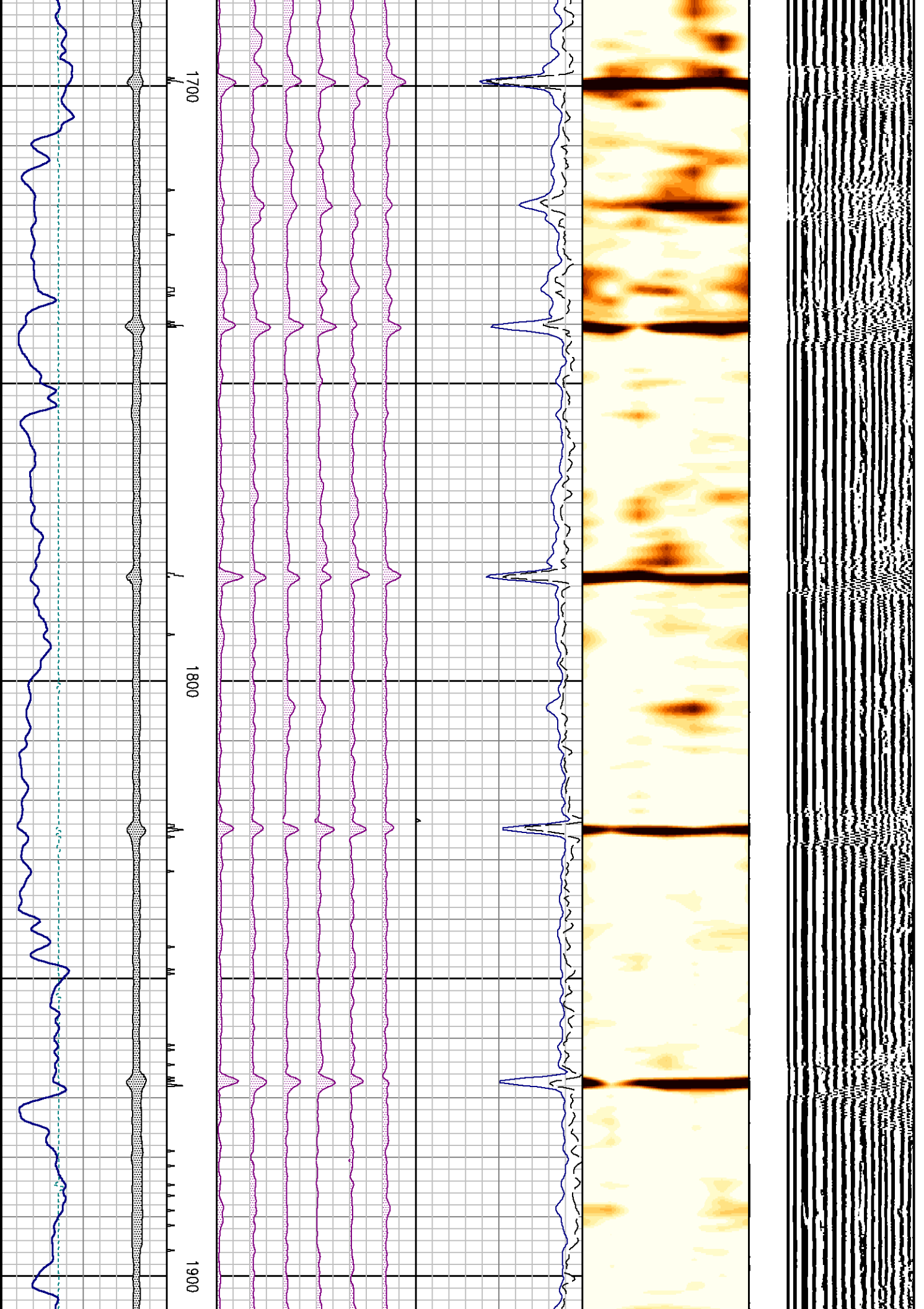
Created : 12/1/2011 9:25:45 PM

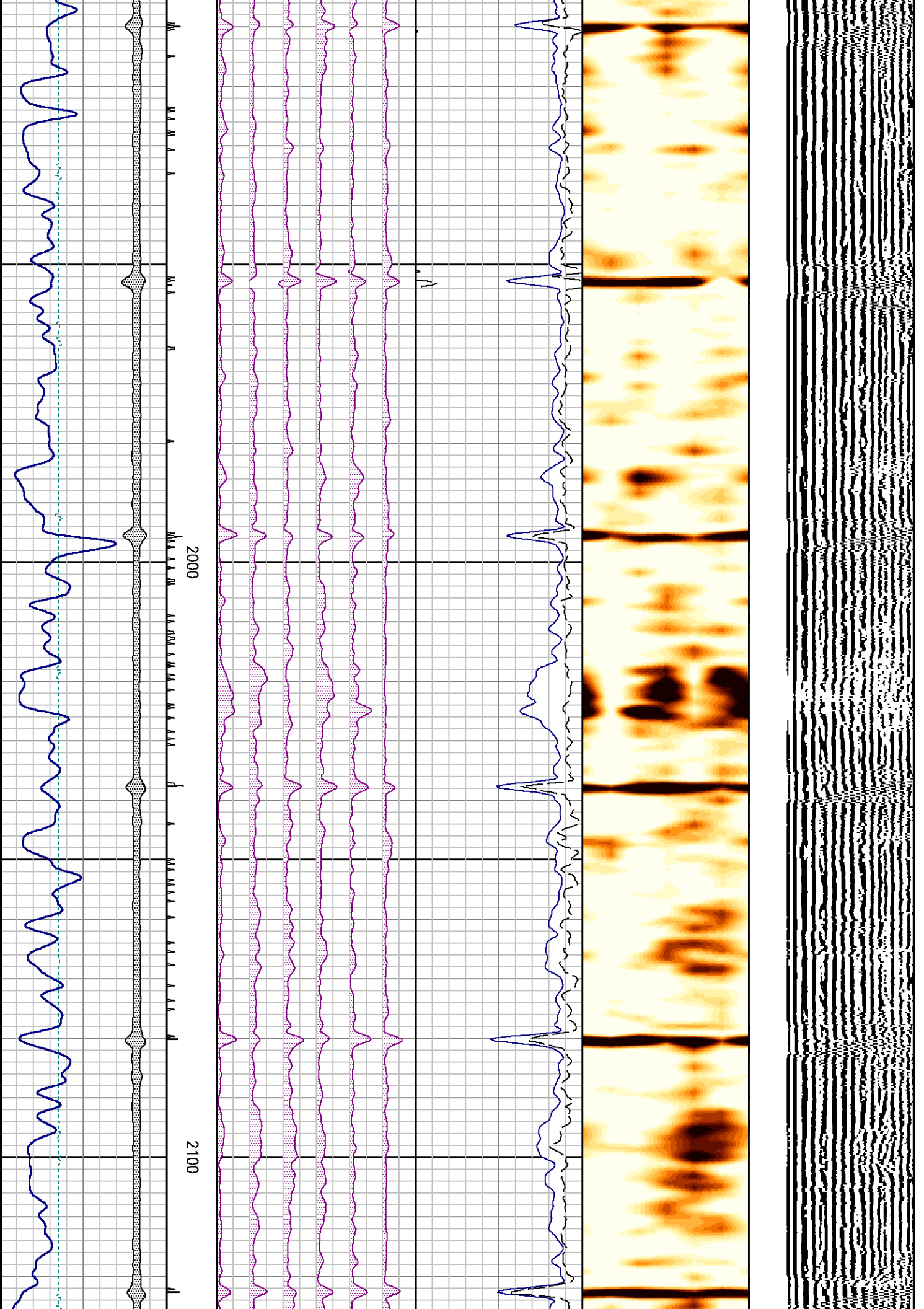


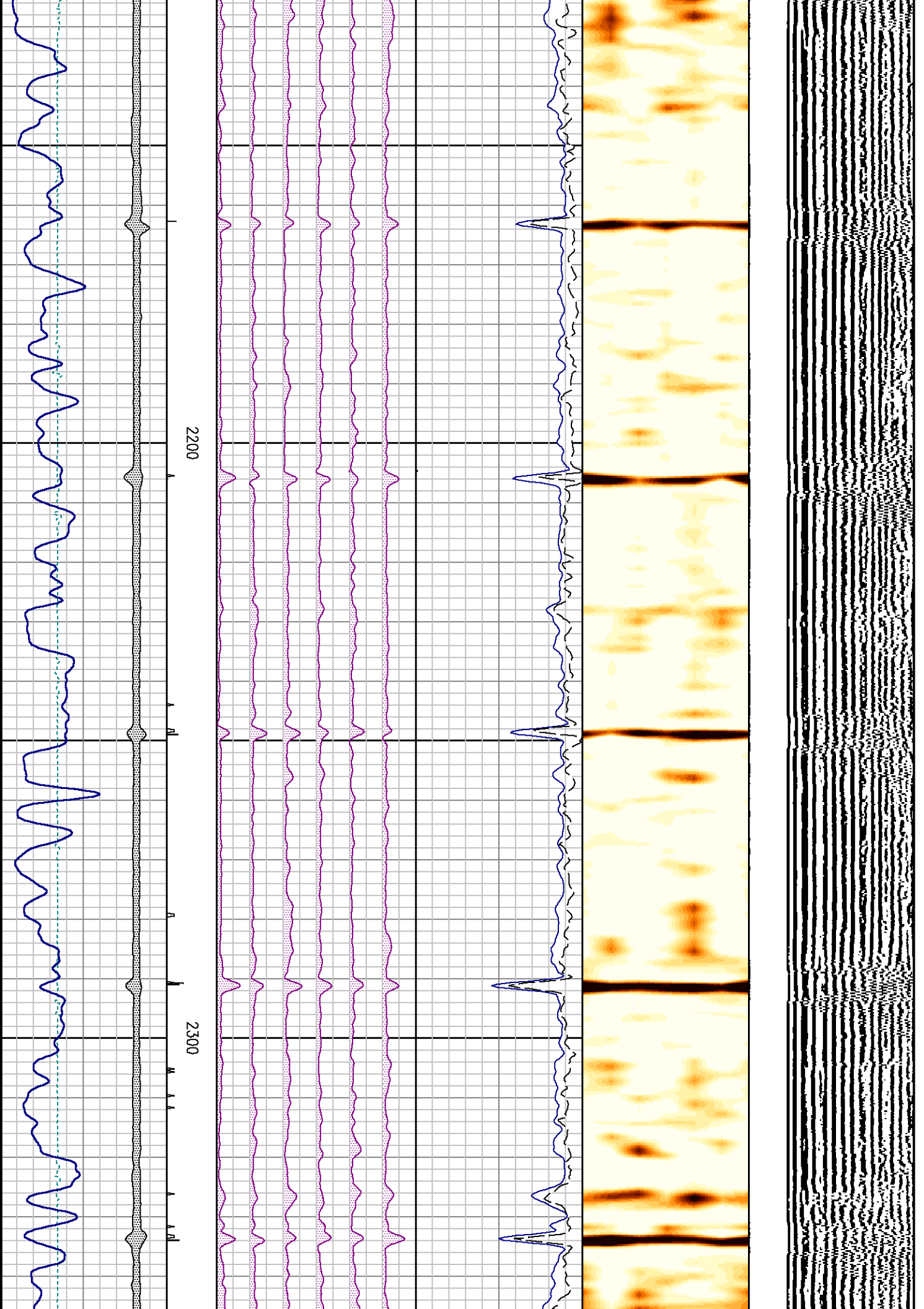


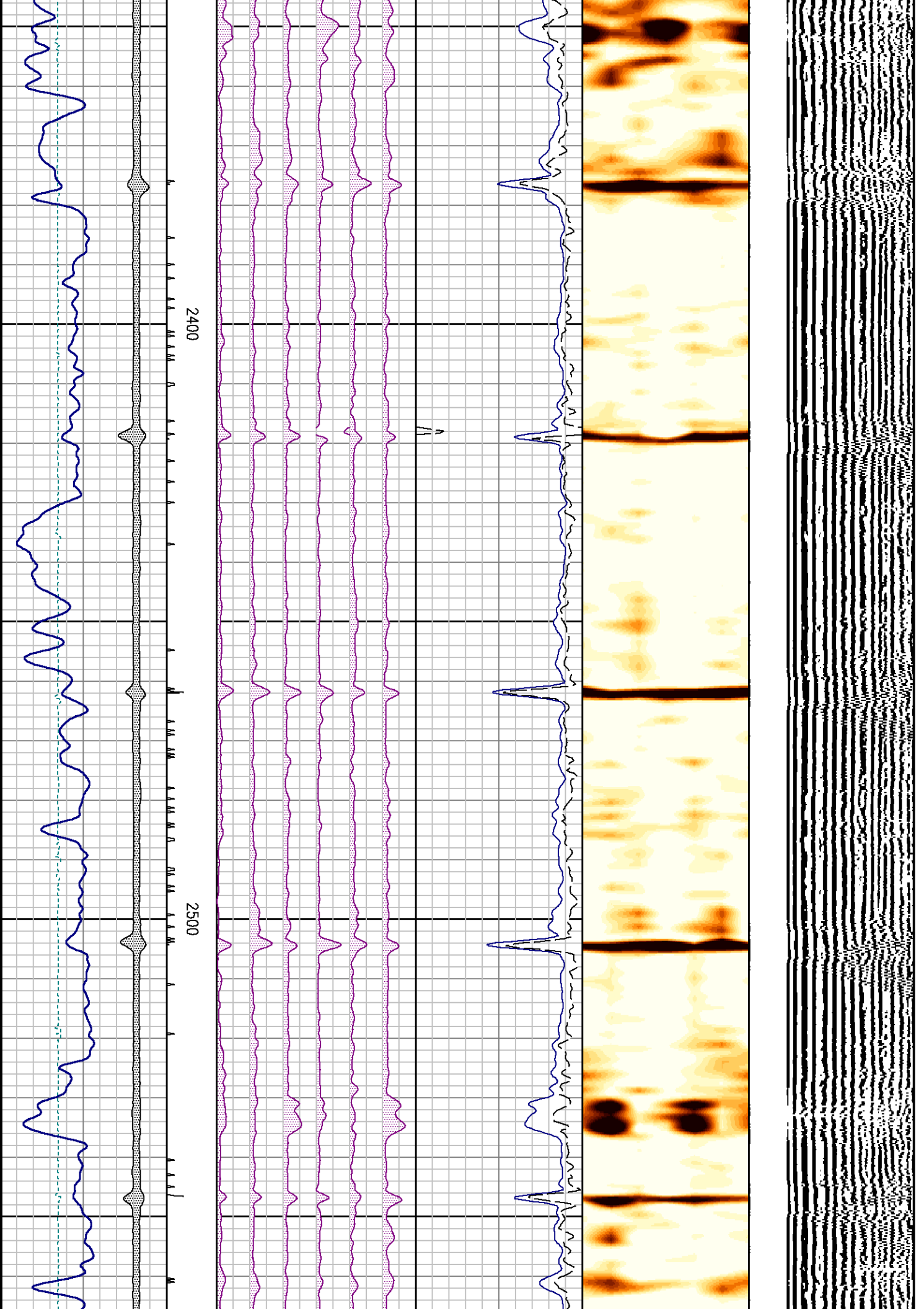


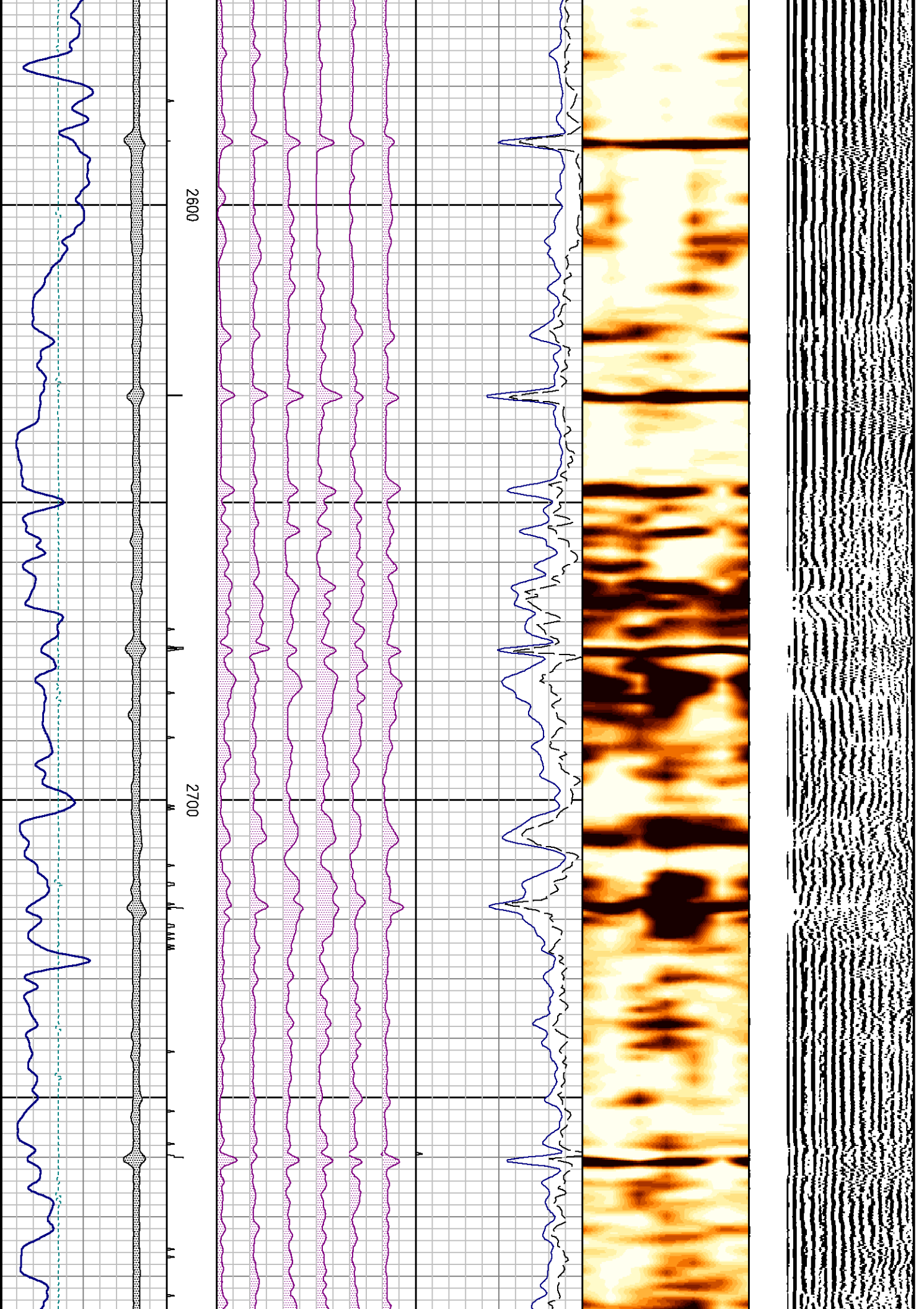


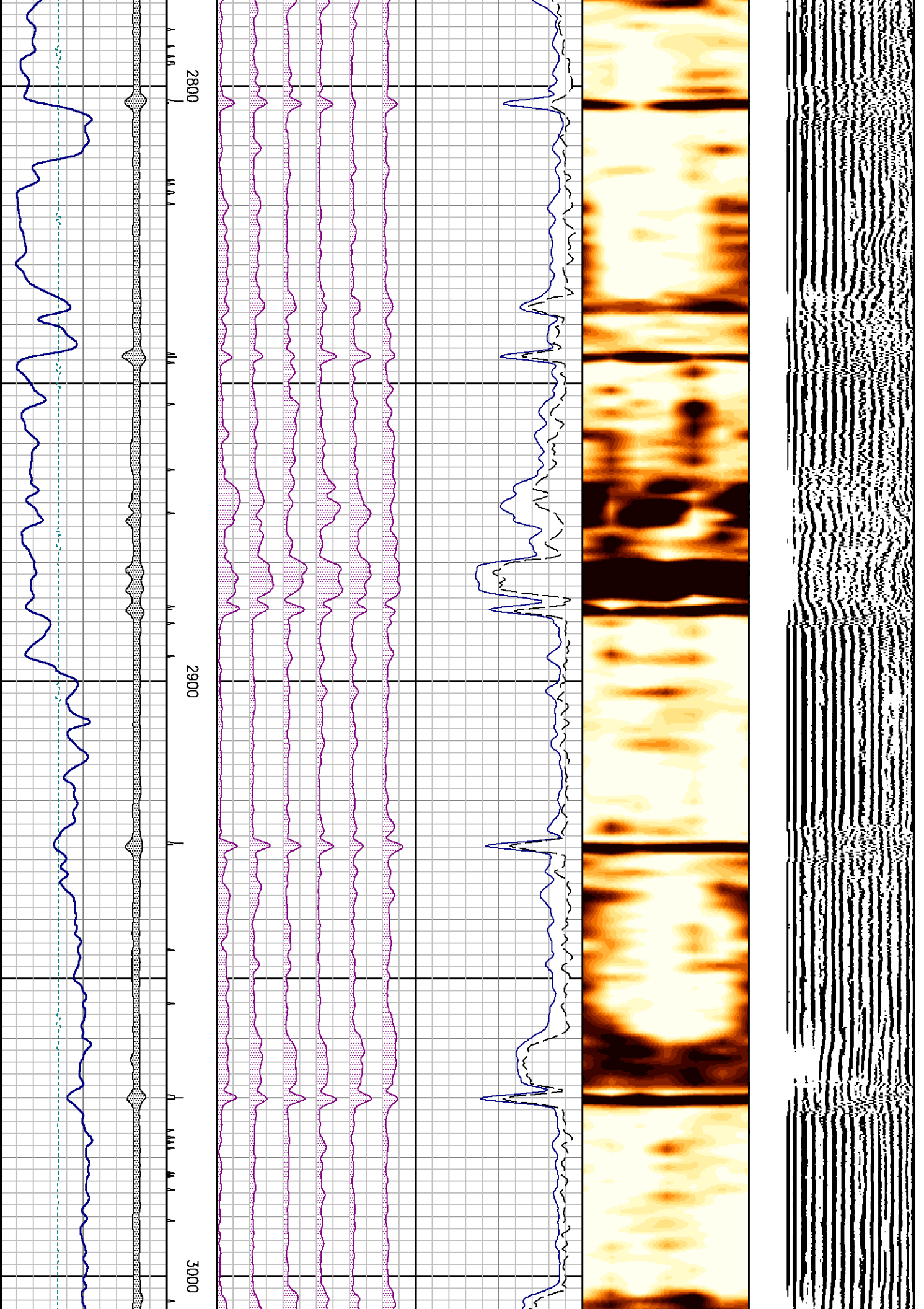


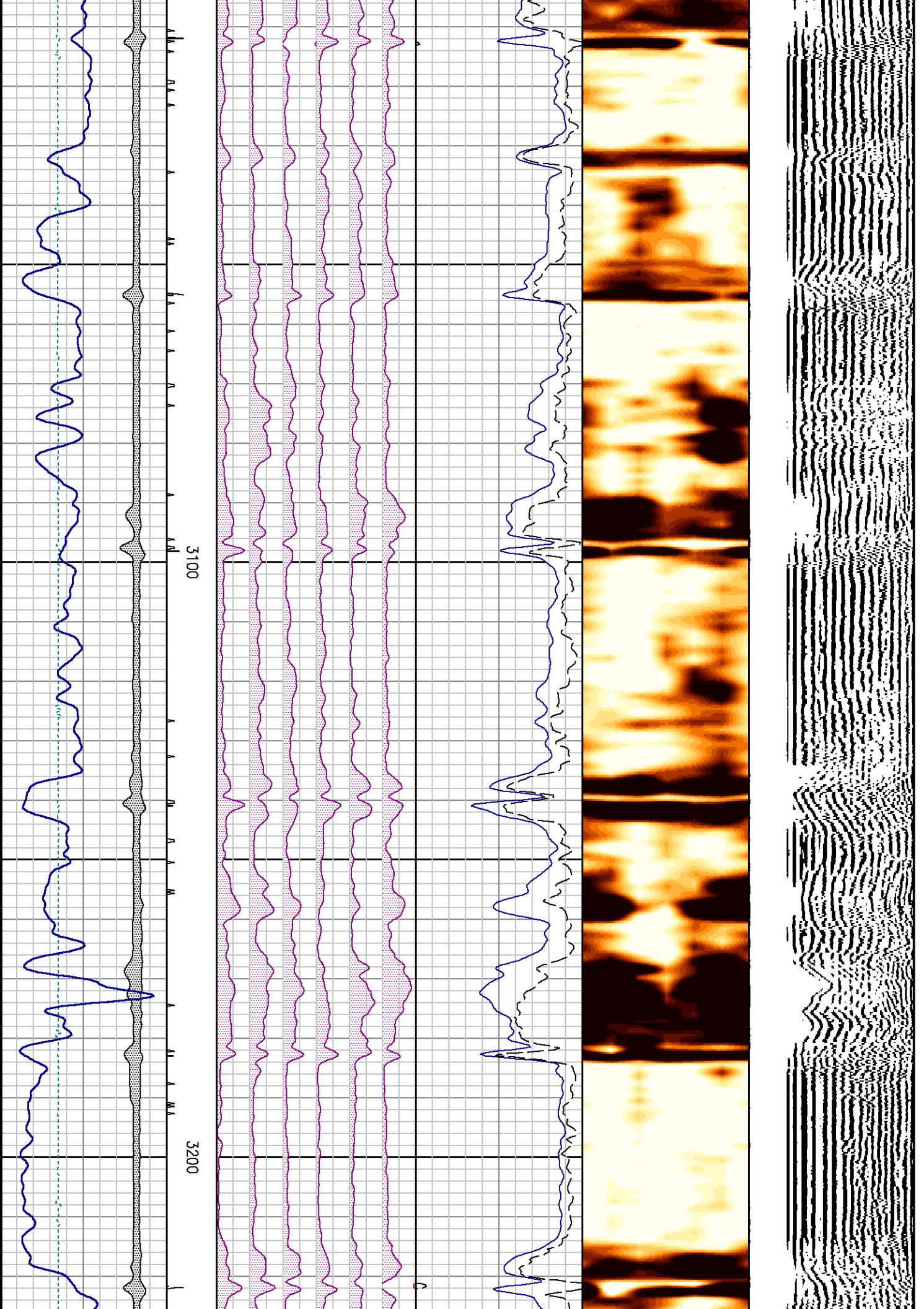


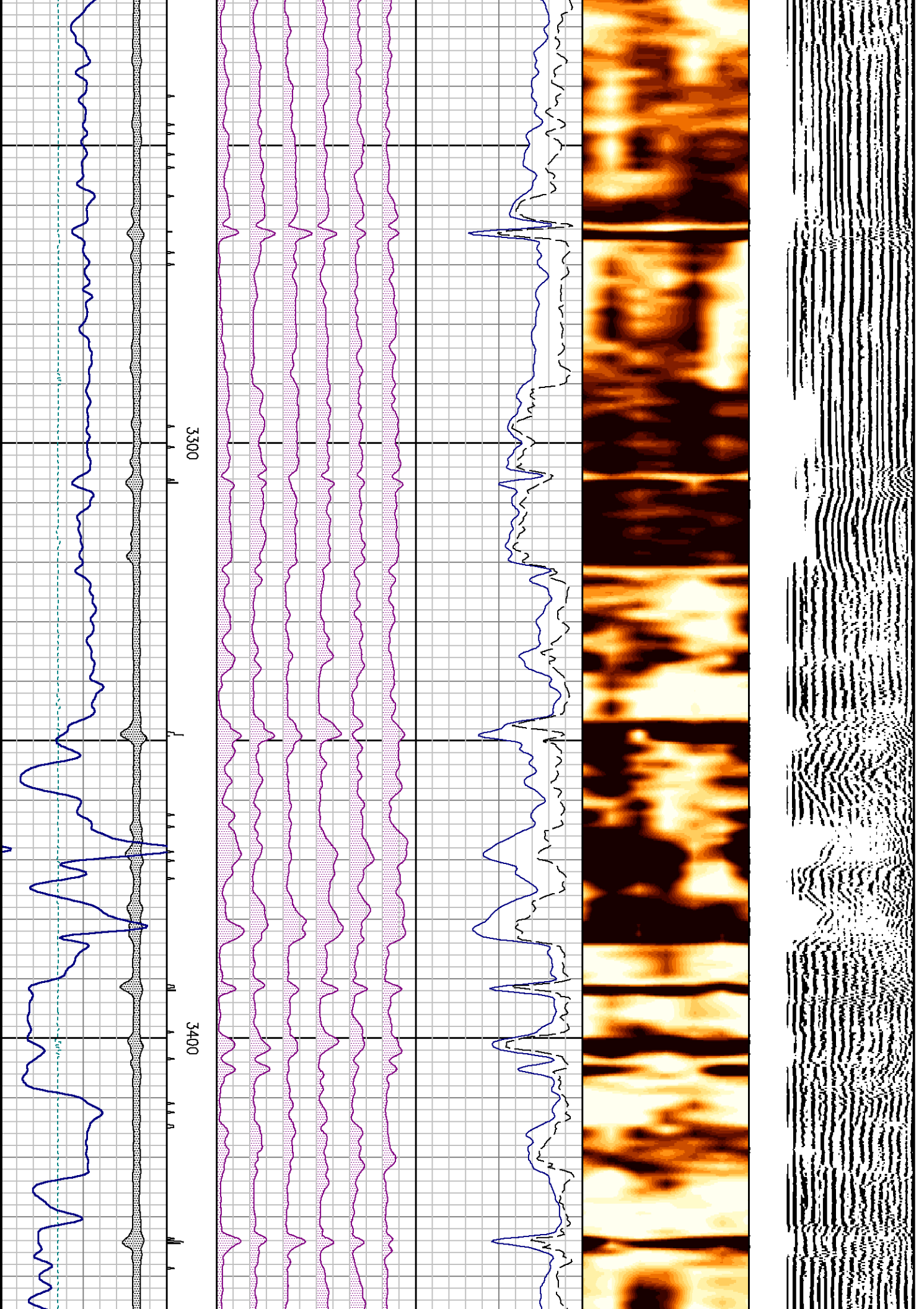


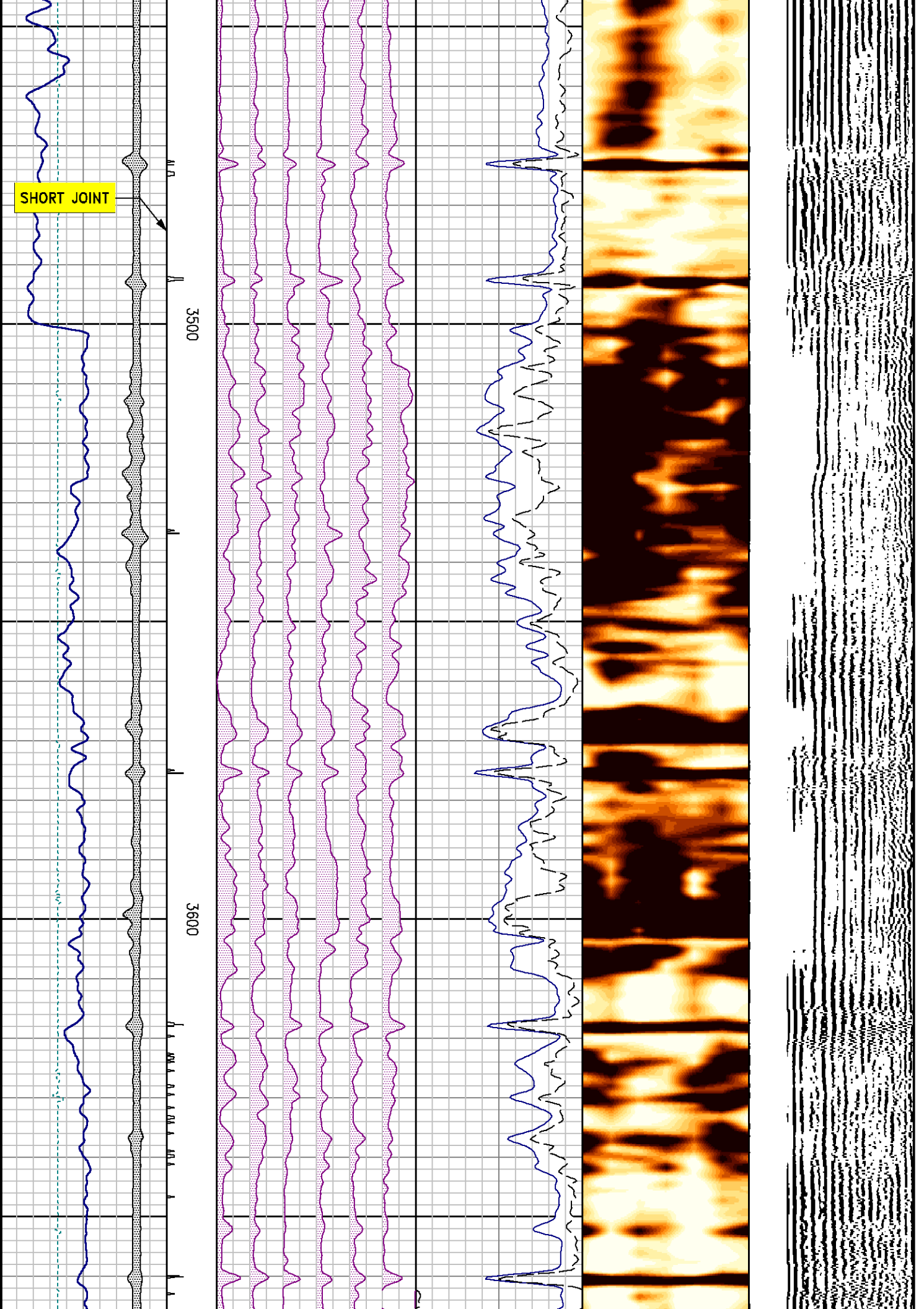


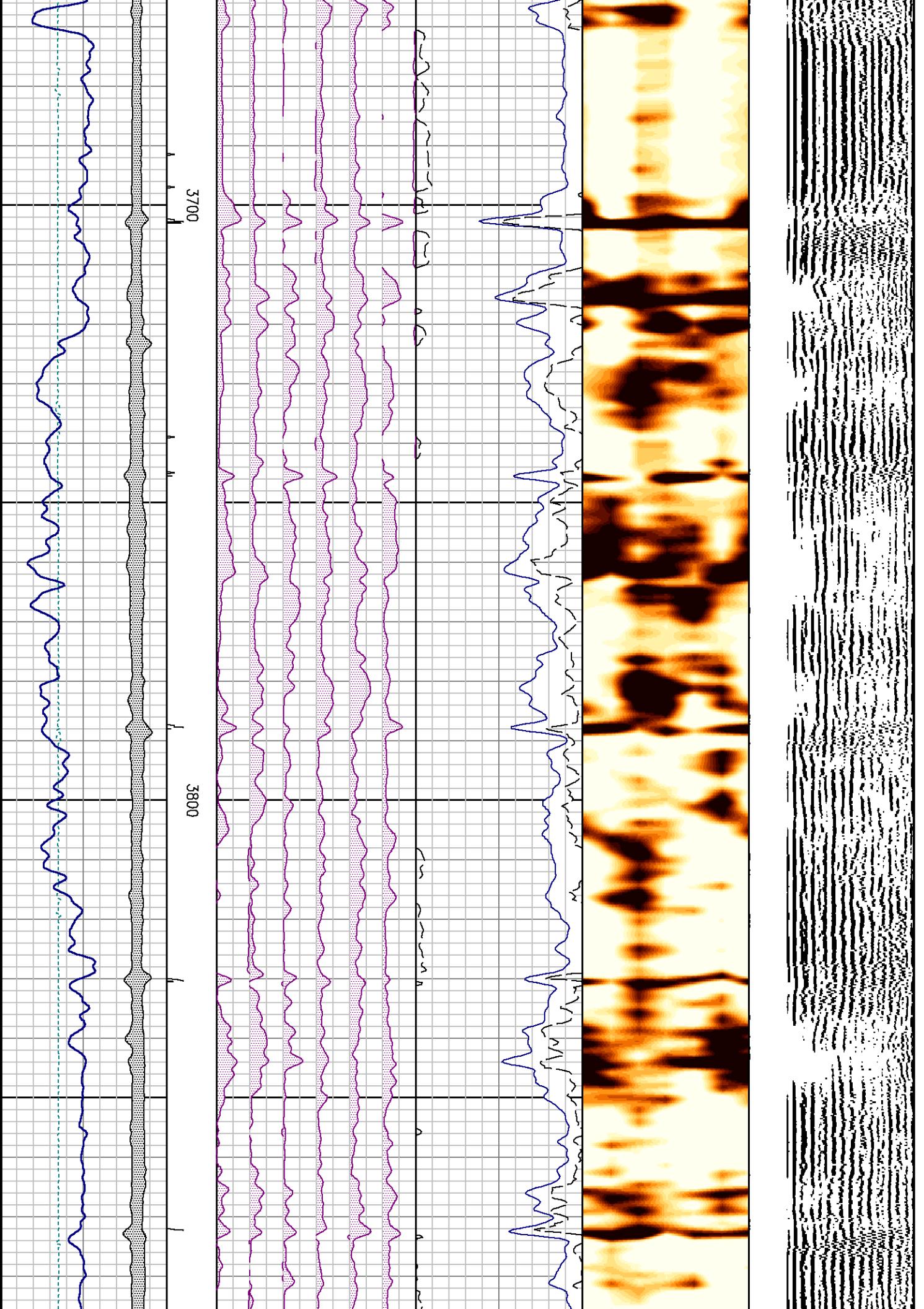


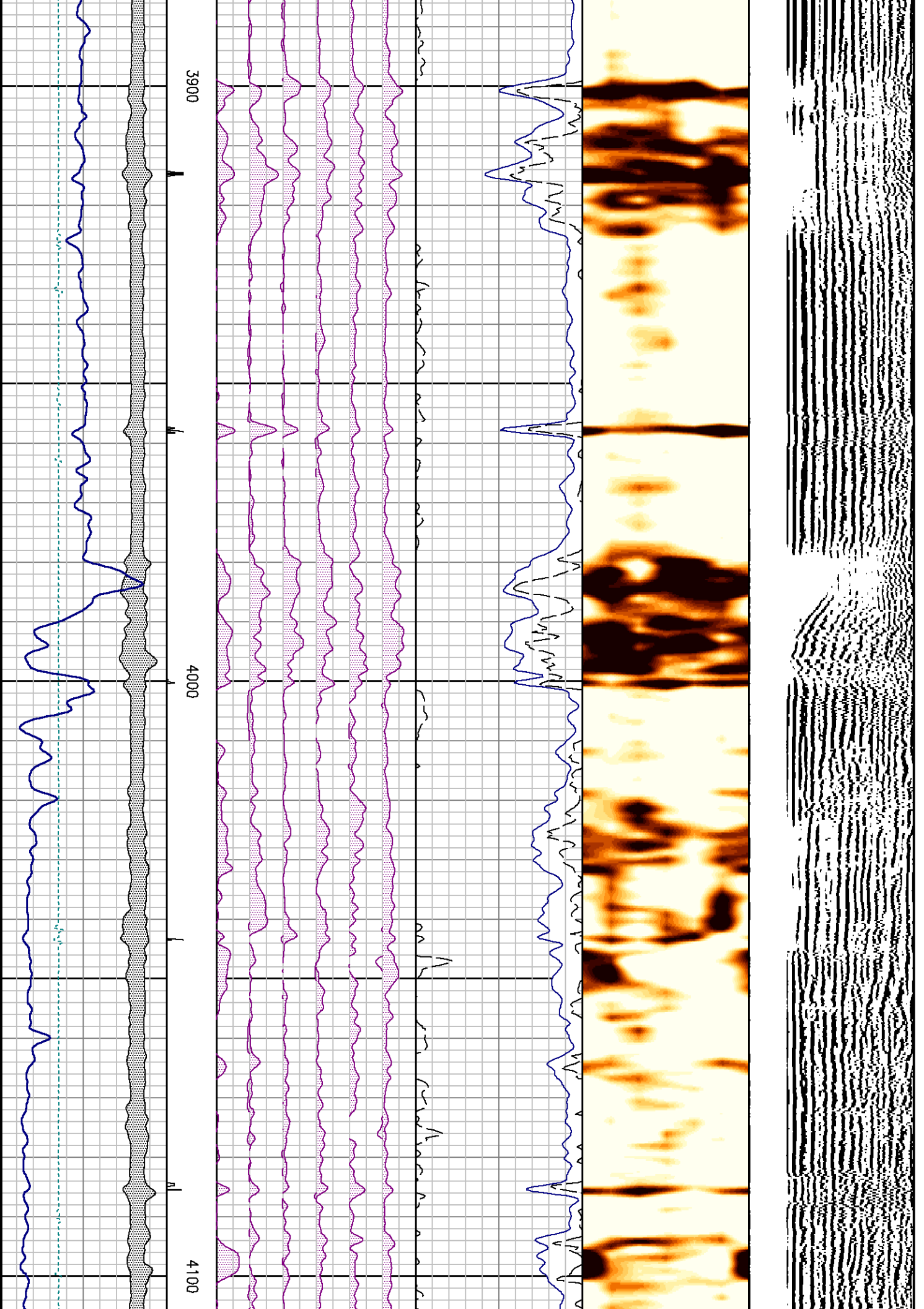


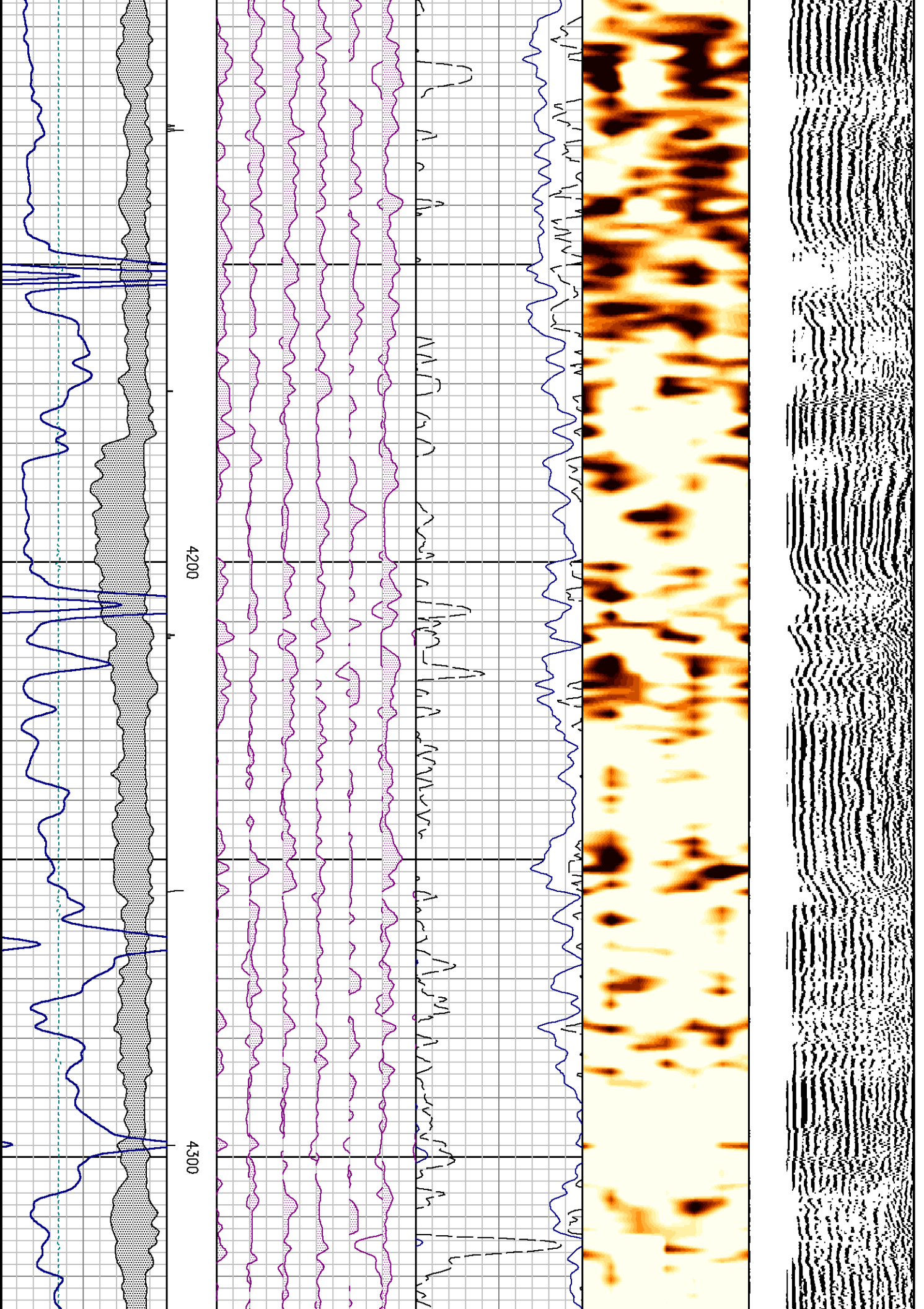


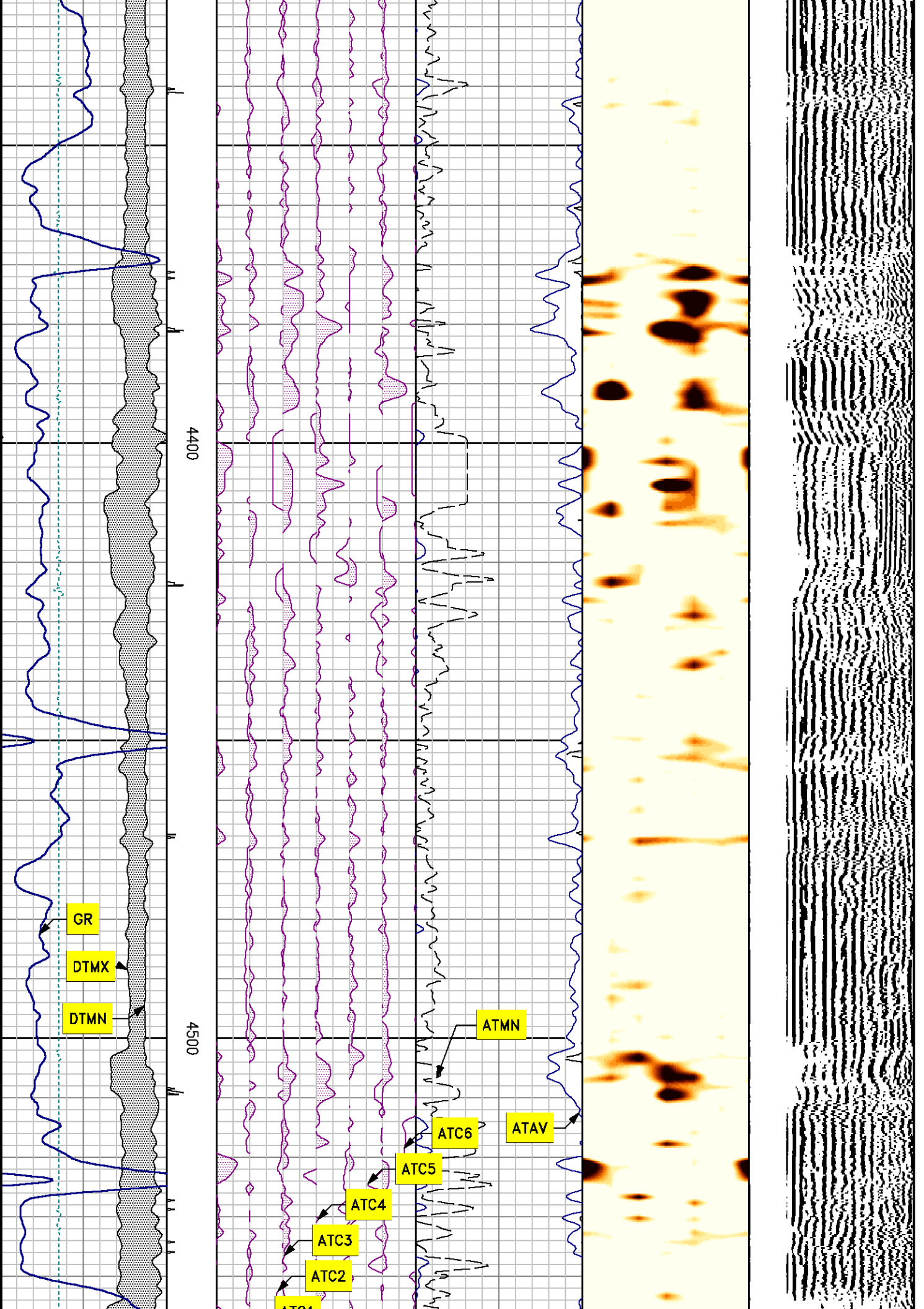


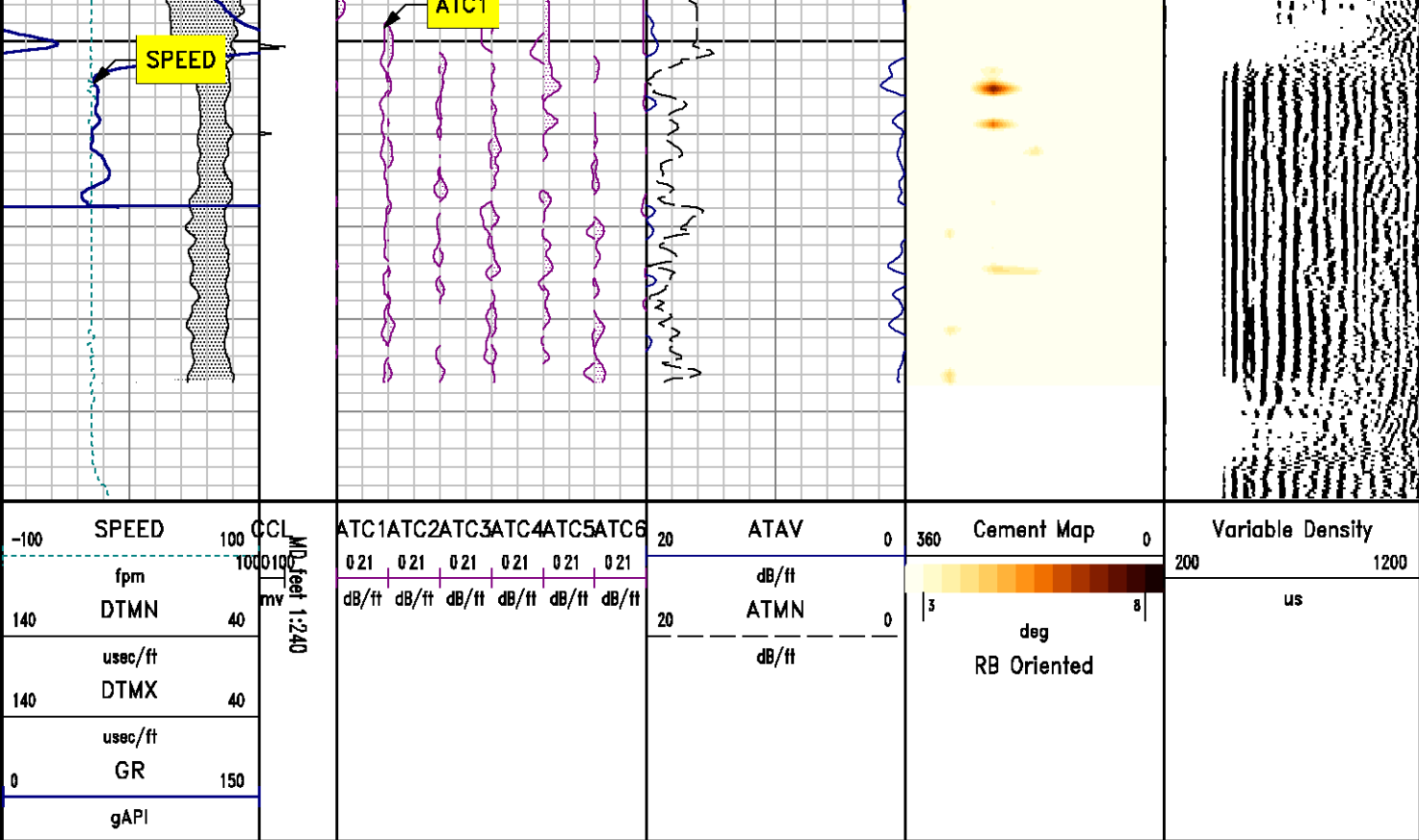












***REPEAT PASS  
RECORDED AT 0 PSI***

### SBT NORMALIZATION RESULTS

CURVE	PARAMETER	VALUE	UNITS	TOP	BOTTOM	COMMENT
ATC1	seg1 cnormf1	0.501	db/ft	3477.750	3647.965	
ATC2	seg2 cnormf2	-0.015	db/ft	3477.750	3647.965	
ATC3	seg3 cnormf3	-1.817	db/ft	3477.750	3647.965	
ATC4	seg4 cnormf4	-0.076	db/ft	3477.750	3647.965	
ATC5	seg5 cnormf5	2.116	db/ft	3477.750	3647.965	
ATC6	seg6 cnormf6	-0.709	db/ft	3477.750	3647.965	
ATC1	seg1 dnormf1	-0.432	db/ft	3477.750	3647.965	Good Confidence
ATC2	seg2 dnormf2	0.847	db/ft	3477.750	3647.965	Good Confidence
ATC3	seg3 dnormf3	-1.757	db/ft	3477.750	3647.965	Good Confidence
ATC4	seg4 dnormf4	-2.166	db/ft	3477.750	3647.965	Low Confidence
ATC5	seg5 dnormf5	2.379	db/ft	3477.750	3647.965	Low Confidence

ATC6	seg6 dnormf6	1.228	db/ft	3477.750	3647.965	Good Confidence
------	--------------	-------	-------	----------	----------	-----------------

### SBT PROCESSING

MEASUREMENT TYPE	PARAMETER	VALUE	UNITS	TOP	BOTTOM
amp	fpamp	69.513	mv	3466.750	3648.000
amp	fpattn	0.843	dB/ft	3466.750	3648.000
atc	dbspread	4.578	dB/ft	3466.750	3648.000
atc	spacing	0.655	feet	3466.750	3648.000
cemr	casing od	7.000	inches	3466.750	3648.000
cemr	casing wt	23.000	lbm/ft	3466.750	3648.000
cemr	compress	1500.000	psi	3466.750	3648.000
CN	Bit Size	7.875	inches	3477.750	3647.965
CN	Casing Thickness	0.318	inches	3466.750	3648.000
CN	Casing/Cement Correction	No		3477.750	3647.965
CN	CN Chism	No		3477.750	3647.965
CN	Matrix	Limestone		3477.750	3647.965
CN	Salinity	0.000	ppm	3477.750	3647.965

### DEPTH OFFSETS

(for Acquired Curves)

SERIES	DEPTH OFFSET	ACQUIRED CURVES					
2346XA	-38.500	CCL					
2435XA	-30.250	LSN					
2435XA	-29.750	NEU	SSN				
1309XA	-29.500	GR					
1424XA	-11.000	ATC1	ATC2	ATC3	ATC4	ATC5	ATC6
		ATAV	ATMN	ATMX	AMAV	DEV	DTMN
		DTMX	RB	XATT	YATT		
1424PA	0.000	CHV	CYQ	SIG			

Created by : SBT, v5.0.003

Plotted by : PlotMgr, v5.4.504

Company : SHELL OIL COMPANY

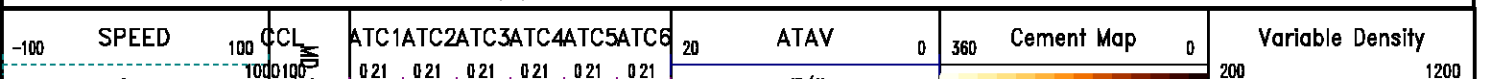
Well : SNEFF No. 19-1H

File Name : c:\welldata\sbt341\repeat 2.xtf

Mode : PlotMgr 5.4.504

Interval : 3457.00 - 3648.00 feet UP

Created : 12/1/2011 6:23:36 PM



140	fpm	DTMN	40
	usec/ft		
140		DTMX	40
	usec/ft		
0		GR	100
		gAPI	

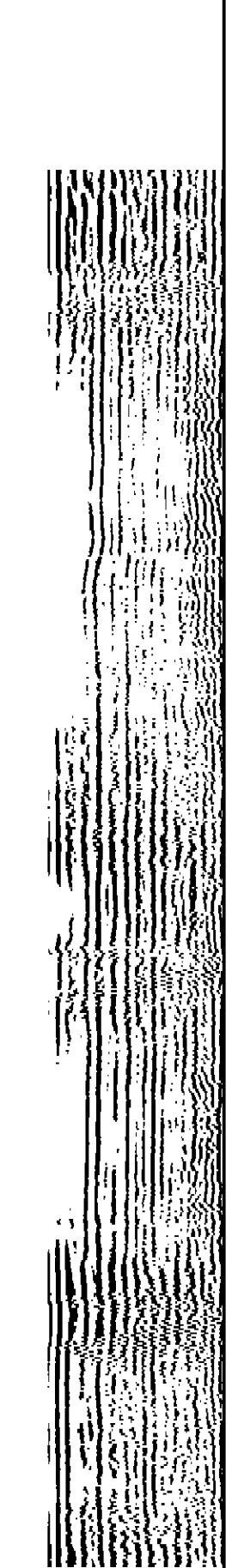
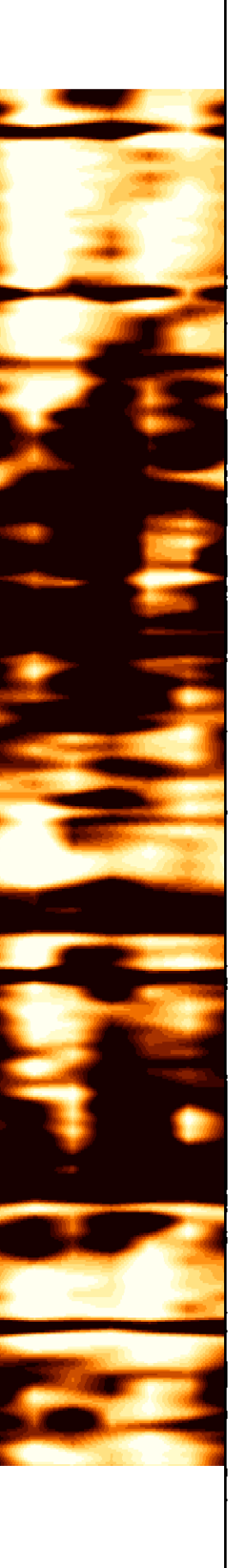
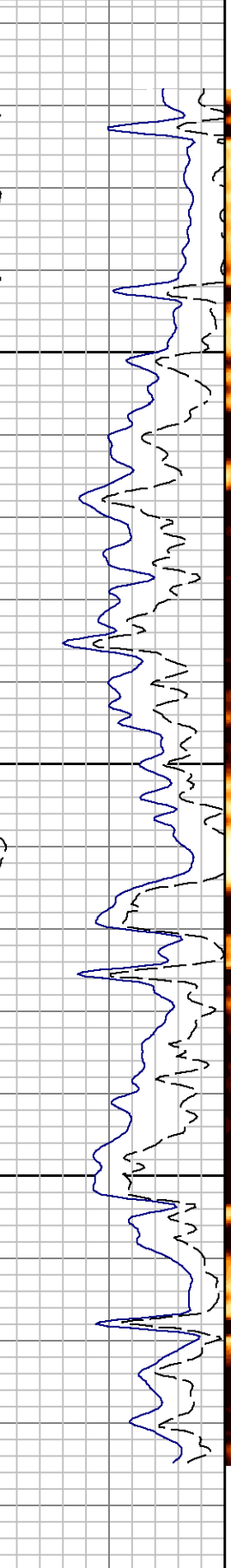
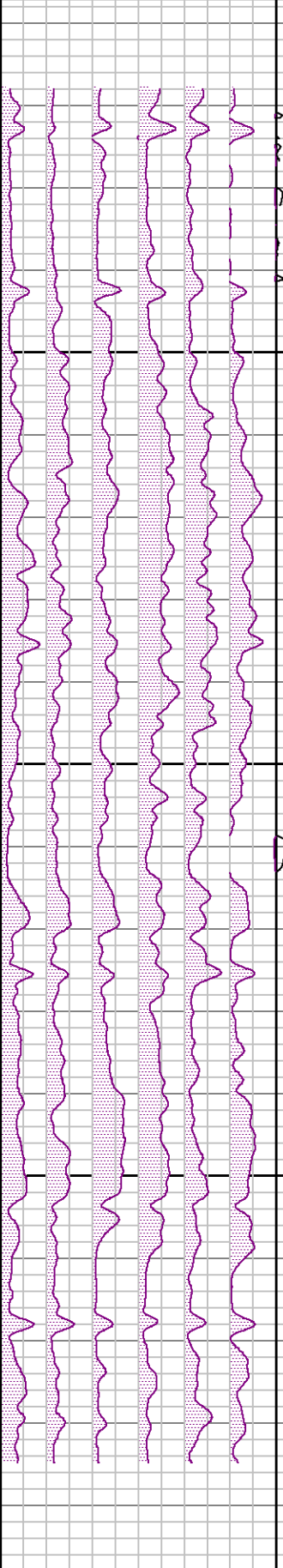
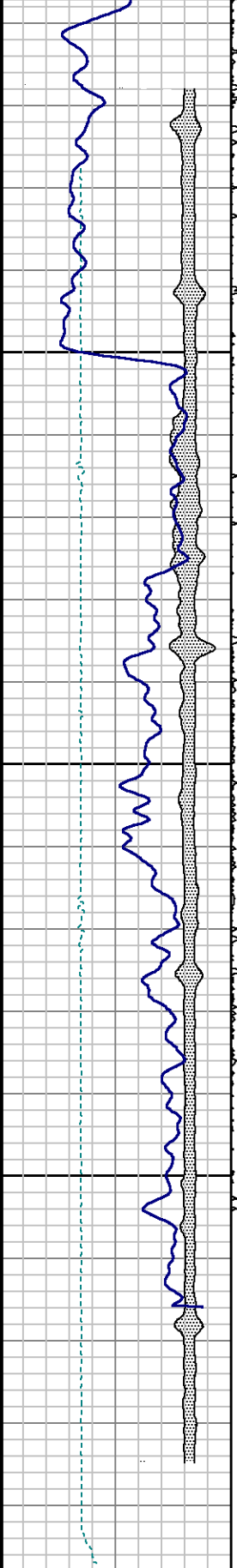
feet 1-240


dB/ft	dB/ft	dB/ft	dB/ft	dB/ft	dB/ft
-------	-------	-------	-------	-------	-------

20	dB/ft	ATMN	0
		dB/ft	

5	deg	8
	RB Oriented	

us



-100	SPEED	100	CCL	ATC1	ATC2	ATC3	ATC4	ATC5	ATC6	20	ATAV	0	360	Cement Map	0	Variable Density	200	1200
	fpm	100	100	0.21	0.21	0.21	0.21	0.21	0.21		dB/ft							
140	DTMN	40	MD feet 1:240	dB/ft	dB/ft	dB/ft	dB/ft	dB/ft	dB/ft	20	ATMN	0		deg				
	usec/ft										dB/ft			RB Oriented				
140	DTMX	40																
	usec/ft																	
0	GR	100																
	gAPI																	

***FREE PIPE PASS  
RECORDED AT 0 PSI***

### SBT NORMALIZATION RESULTS

CURVE	PARAMETER	VALUE	UNITS	TOP	BOTTOM	COMMENT
ATC1	seg1 cnormf1	0.501	db/ft	535.027	1000.000	
ATC2	seg2 cnormf2	-0.015	db/ft	535.027	1000.000	
ATC3	seg3 cnormf3	-1.817	db/ft	535.027	1000.000	
ATC4	seg4 cnormf4	-0.076	db/ft	535.027	1000.000	
ATC5	seg5 cnormf5	2.116	db/ft	535.027	1000.000	
ATC6	seg6 cnormf6	-0.709	db/ft	535.027	1000.000	
ATC1	seg1 dnormf1	0.502	db/ft	535.027	1000.000	Good Confidence
ATC2	seg2 dnormf2	-0.014	db/ft	535.027	1000.000	Good Confidence
ATC3	seg3 dnormf3	-1.817	db/ft	535.027	1000.000	Good Confidence
ATC4	seg4 dnormf4	-0.077	db/ft	535.027	1000.000	Good Confidence
ATC5	seg5 dnormf5	2.116	db/ft	535.027	1000.000	Low Confidence
ATC6	seg6 dnormf6	-0.710	db/ft	535.027	1000.000	Good Confidence

### SBT PROCESSING

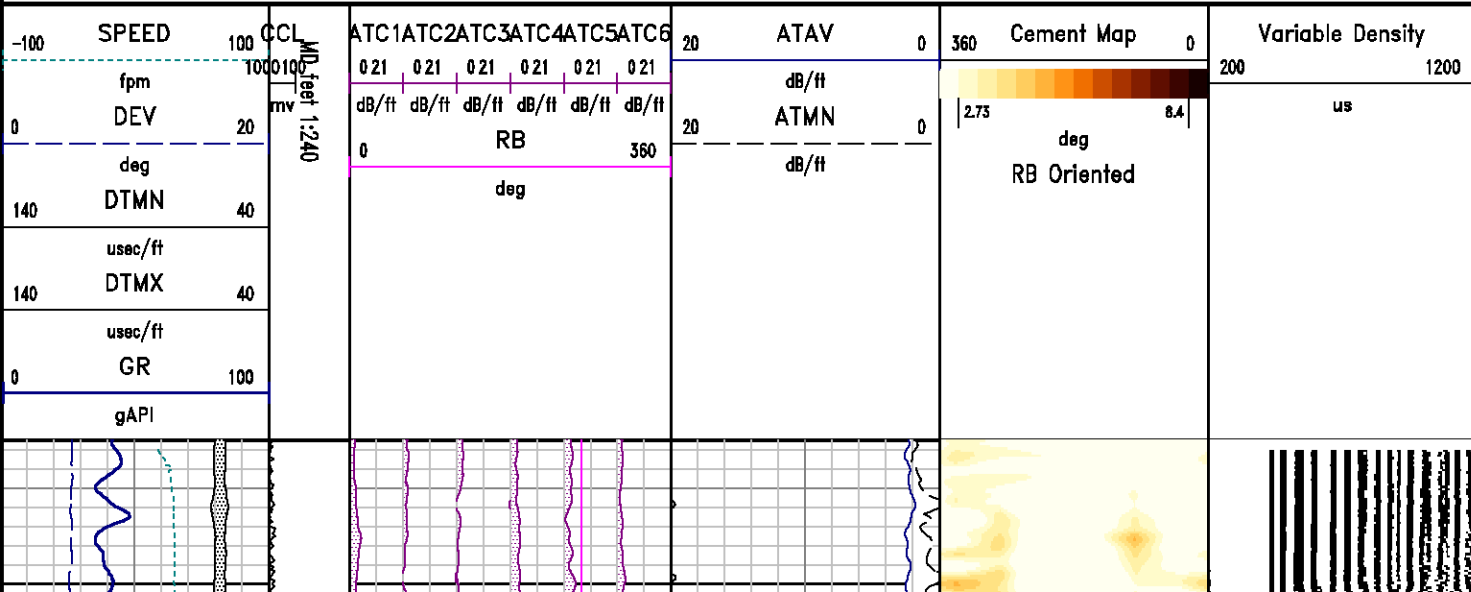
MEASUREMENT TYPE	PARAMETER	VALUE	UNITS	TOP	BOTTOM
amp	fpamp	69.513	mv	535.000	989.000
amp	fpattn	0.843	dB/ft	535.000	989.000
atc	dbspread	4.578	dB/ft	535.000	989.000

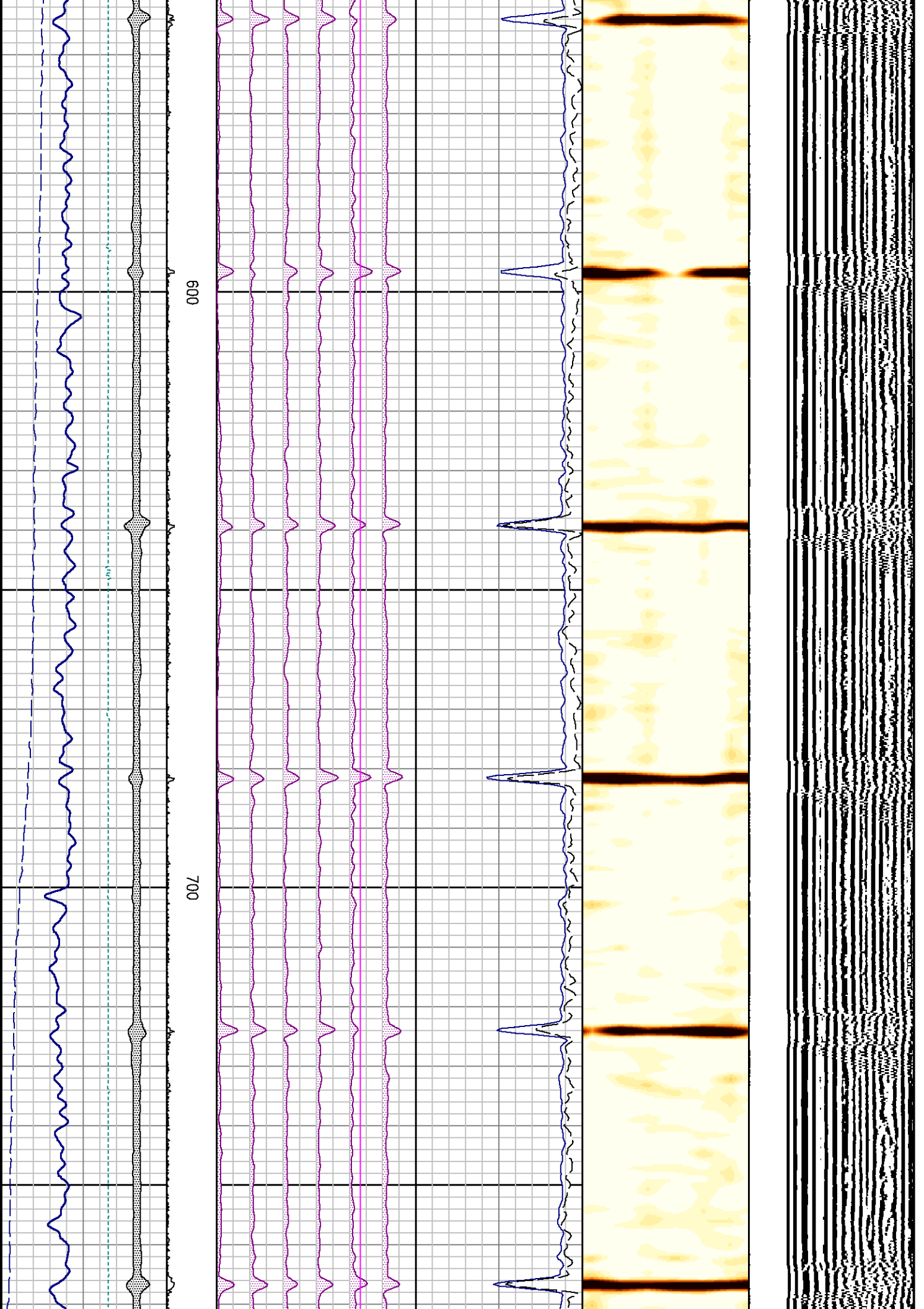
atc	spacing	0.655	feet	535.000	989.000
cemr	casing od	7.000	inches	535.000	989.000
cemr	casing wt	23.000	lbm/ft	535.000	989.000
cemr	compress	1500.000	psi	535.000	989.000
CN	Bit Size	7.875	inches	535.027	1000.000
CN	Casing Thickness	0.318	inches	535.000	989.000
CN	Casing/Cement Correction	No		535.027	1000.000
CN	CN Chism	No		535.027	1000.000
CN	Matrix	Limestone		535.027	1000.000
CN	Salinity	0.000	ppm	535.027	1000.000

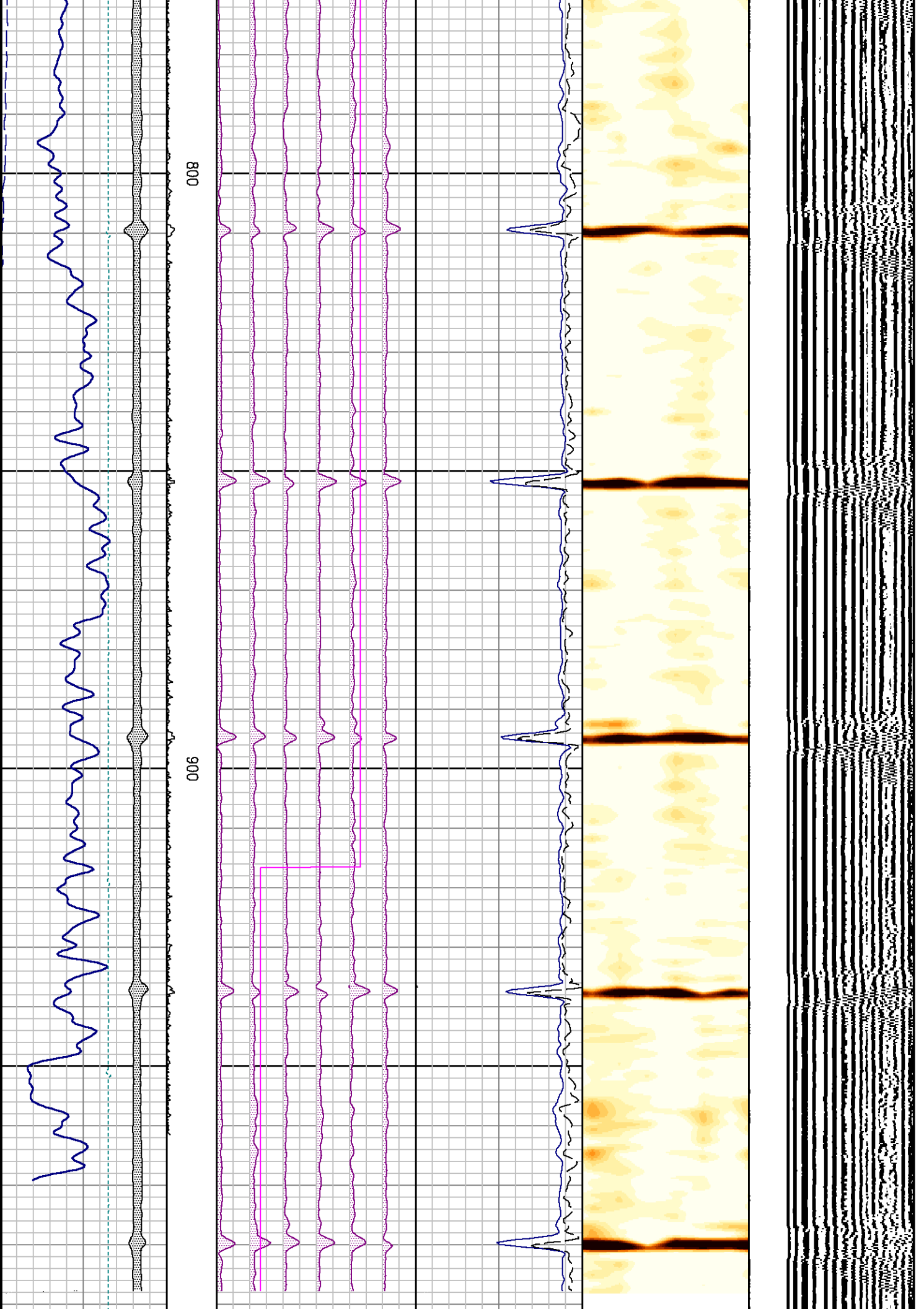
### DEPTH OFFSETS (for Acquired Curves)

SERIES	DEPTH OFFSET	ACQUIRED CURVES					
2346XA	-38.500	CCL					
2435XA	-30.250	LSN					
2435XA	-29.750	NEU	SSN				
1309XA	-29.500	GR					
1424XA	-11.000	ATC1	ATC2	ATC3	ATC4	ATC5	ATC6
		ATAV	ATMN	ATMX	AMAV	DEV	DTMN
		DTMX	RB	XATT	YATT		
1424PA	0.000	CHV	CYQ	SIG			

Created by : SBT, v5.0.003  
 Plotted by : PlotMgr, v5.4.504  
 Company : SHELL OIL COMPANY  
 Well : SNEFF No. 19-1H  
 File Name : C:\WELLDATA\SBT341\FREE.xtf  
 Mode : PlotMgr 5.4.504  
 Interval : 535.00 - 1000.25 feet DOWN  
 Created : 12/1/2011 5:25:21 PM











Baker Atlas

Company SHELL OIL COMPANY  
Well SNEFF No. 19-1H  
Field WILDCAT  
County HARPER State KANSAS

File No:  
523341  
API No:  
15-077-21756

Location  
NE SW SW SE  
528' FSL & 2140' FEL  
SEC 19 TWP 33S RGE 8W

Elevations  
KB N/A  
DF 1344 ft  
GL 1317 ft

