



SUPERIOR
Hays,
Kansas

MICRO
LOG

Company	MAI OIL OPERATIONS, INC.	Company	MAI OIL OPERATIONS, INC.
Well	HABERER "A" #4	Well	HABERER "A" #4
Field	ELASSER	Field	ELASSER
County	RUSSELL	County	RUSSELL
State	KANSAS	State	KANSAS
Location:	API # : 15-167-23759-0000	Other Services	CDL/CNL DIL
Permanent Datum	GROUND LEVEL	Elevation	1628
Log Measured From	KELLY BUSHING 8' A.G.L.	K.B.	1636
Drilling Measured From	KELLY BUSHING	D.F.	1634
	SEC 14 TWP 12S RGE 15W	G.L.	1628

Date	1/24/12
Run Number	TWO
Depth Driller	3160
Depth Logger	3160
Bottom Logged Interval	3158
Top Log Interval	2200
Casing Driller	8 5/8"@705'
Casing Logger	707
Bit Size	7 7/8"
Type Fluid in Hole	CHEMICAL MUD
Density / Viscosity	9.3/54
pH / Fluid Loss	10.0/7.2
Source of Sample	FLOWLINE
Rm @ Meas. Temp	.400@70F
Rmt @ Meas. Temp	.300@70F
Rmc @ Meas. Temp	.480@70F
Source of Rmf / Rmc	MEASUREMENT
Rm @ BHT	.259@108F
Time Circulation Stopped	3 HOURS
Time Logger on Bottom	8:45 P.M.
Maximum Recorded Temperature	108F
Equipment Number	4010
Location	HAYS, KANSAS
Recorded By	JEFF LUEBBERS
Witnessed By	JOSH AUSTIN
	ALLEN BANGERT

<<< Fold Here >>>

All interpretations are opinions based on inferences from electrical or other measurements and we cannot and do not guarantee the accuracy or correctness of any interpretation, and we shall not, except in the case of gross or willful negligence on our part, be liable or responsible for any loss, costs, damages, or expenses incurred or sustained by anyone resulting from any interpretation made by any of our officers, agents or employees. These interpretations are also subject to our general terms and conditions set out in our current Price Schedule.

Comments

THANK YOU FOR USING SUPERIOR WELL SERVICE HAYS, KANSAS (785) 628-6395
 DIRECTIONS
 GORHAM, KS. 1E. ON OLD 40 TO "FAIRPORT BLKTOP", 10N. TO "CANYON RD.", 4 E. & S. & E., N. INTO
 @CATTLE GUARD

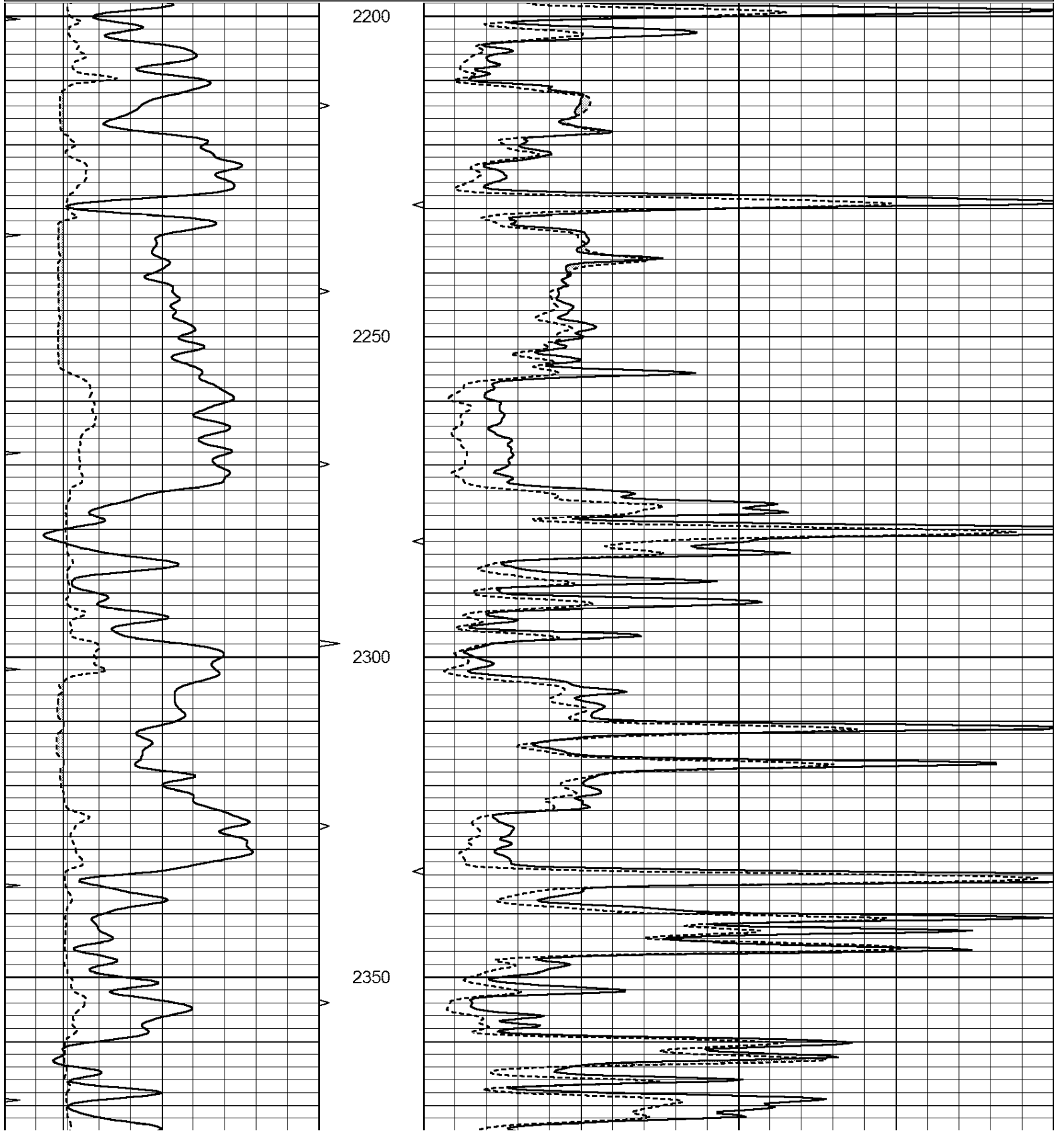


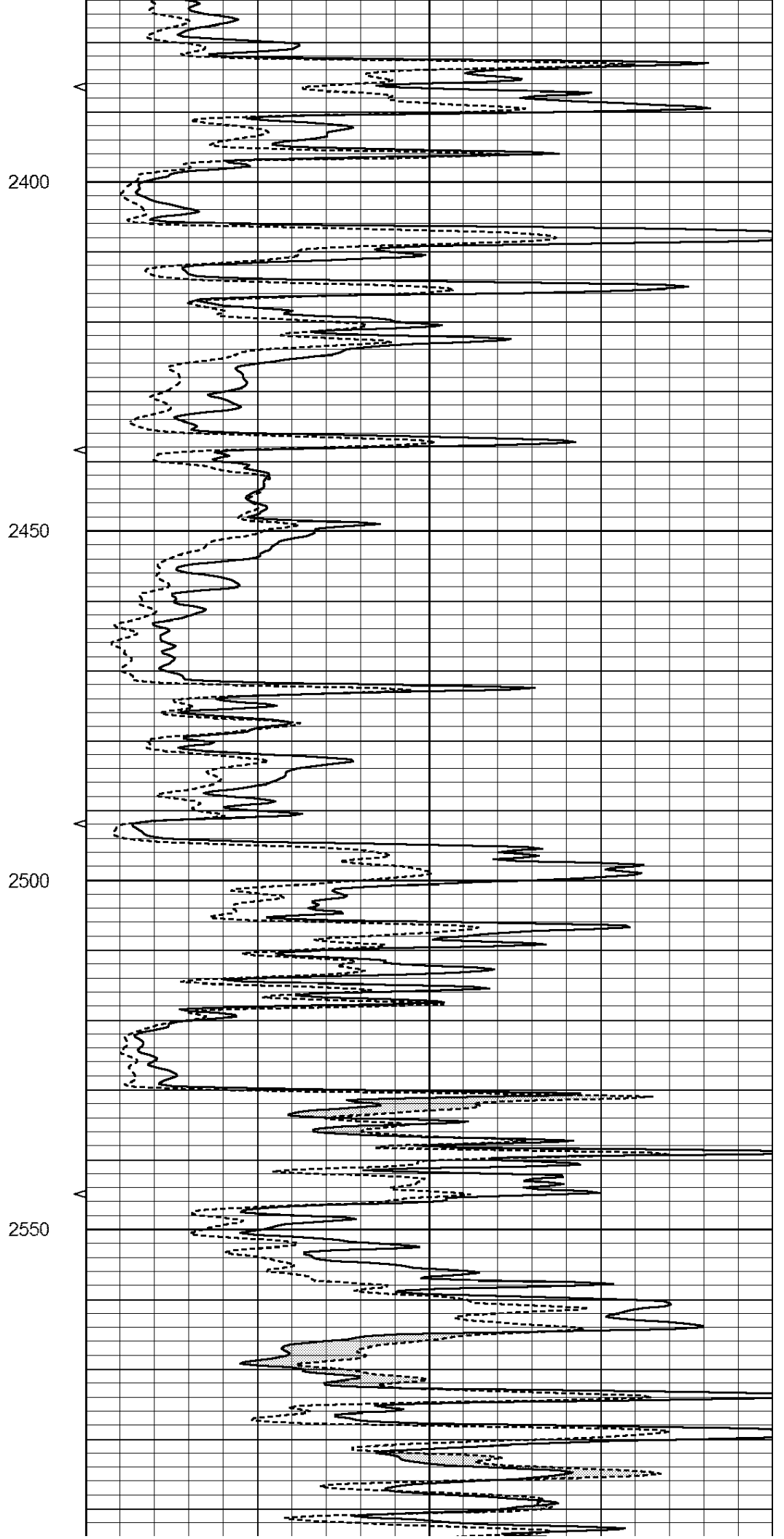
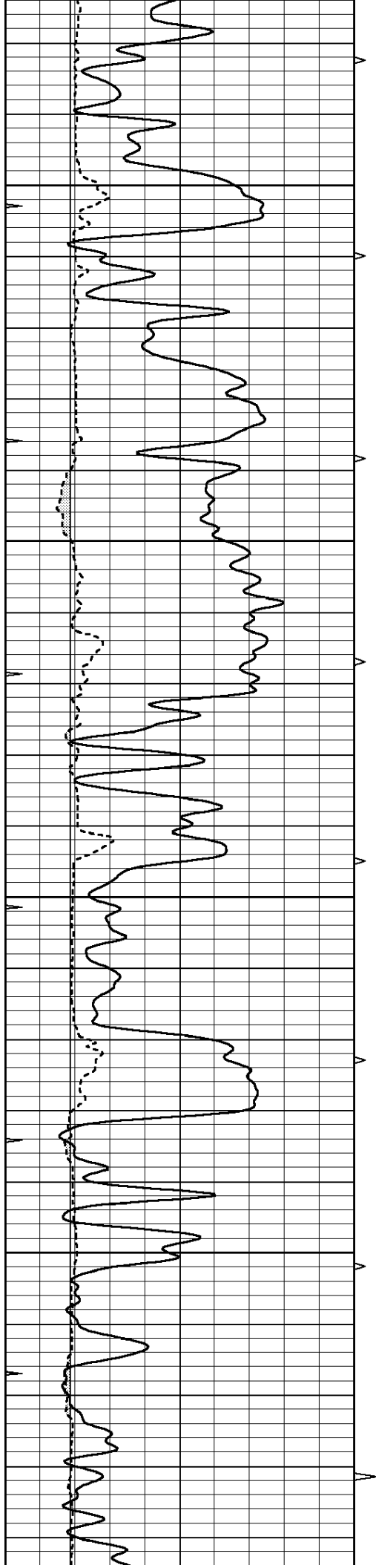
SUPERIOR
Hays,
Kansas

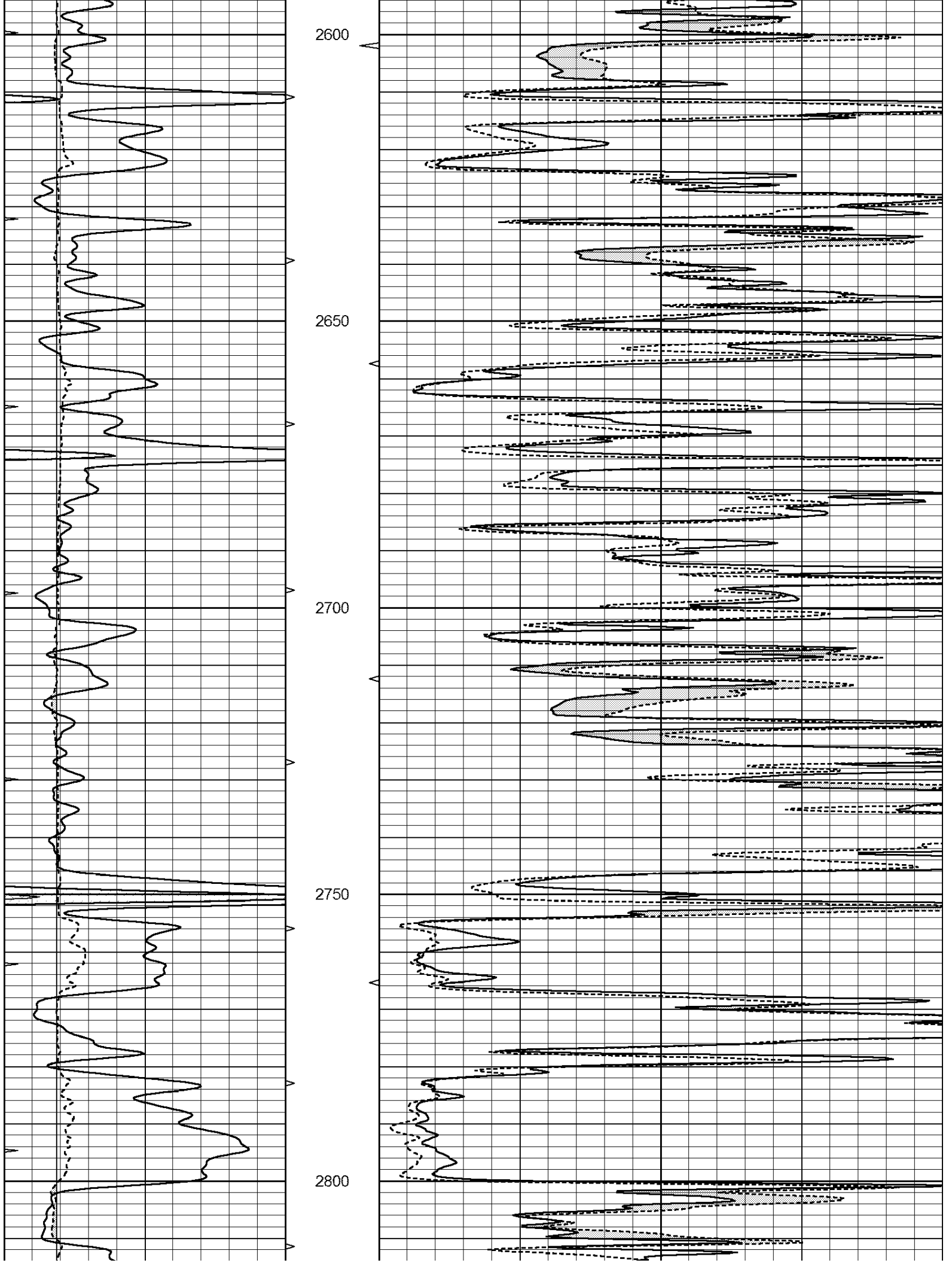
MAIN SECTION

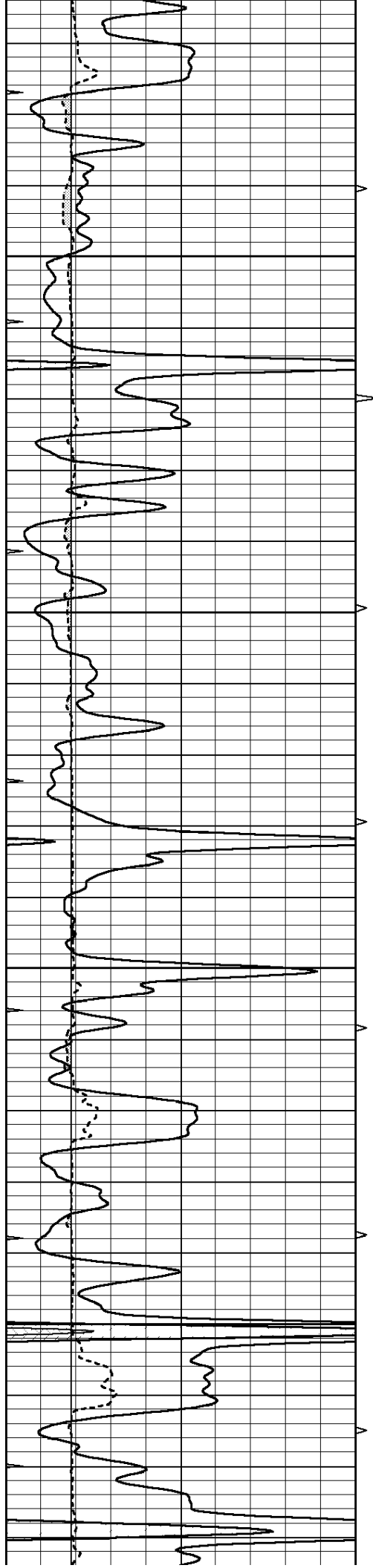
Database File: 008146ddn.db
 Dataset Pathname: pass6.3
 Presentation Format: micro
 Dataset Creation: Tue Jan 24 23:31:01 2012 by Calc Open-Cased 110302
 Charted by: Depth in Feet scaled 1:240

0	GAMMA RAY (GAPI)	150	ABHV	0	MEL1.5 (Ohm-m)	40
6	CALIPER (in)	16	10 (ft3)	0	MEL2.0 (Ohm-m)	40
0	MINMK	20	TBHV			
			0 (ft3)	10		







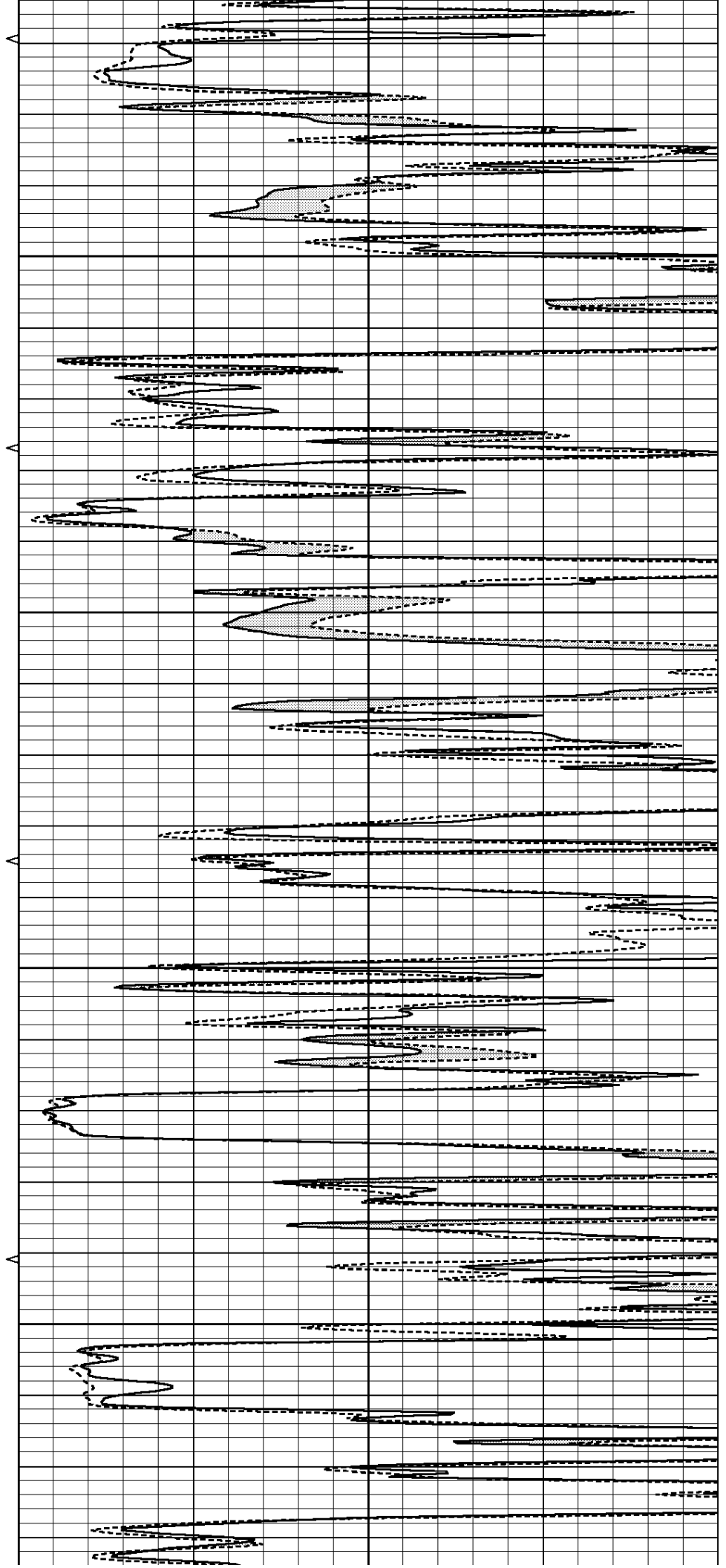


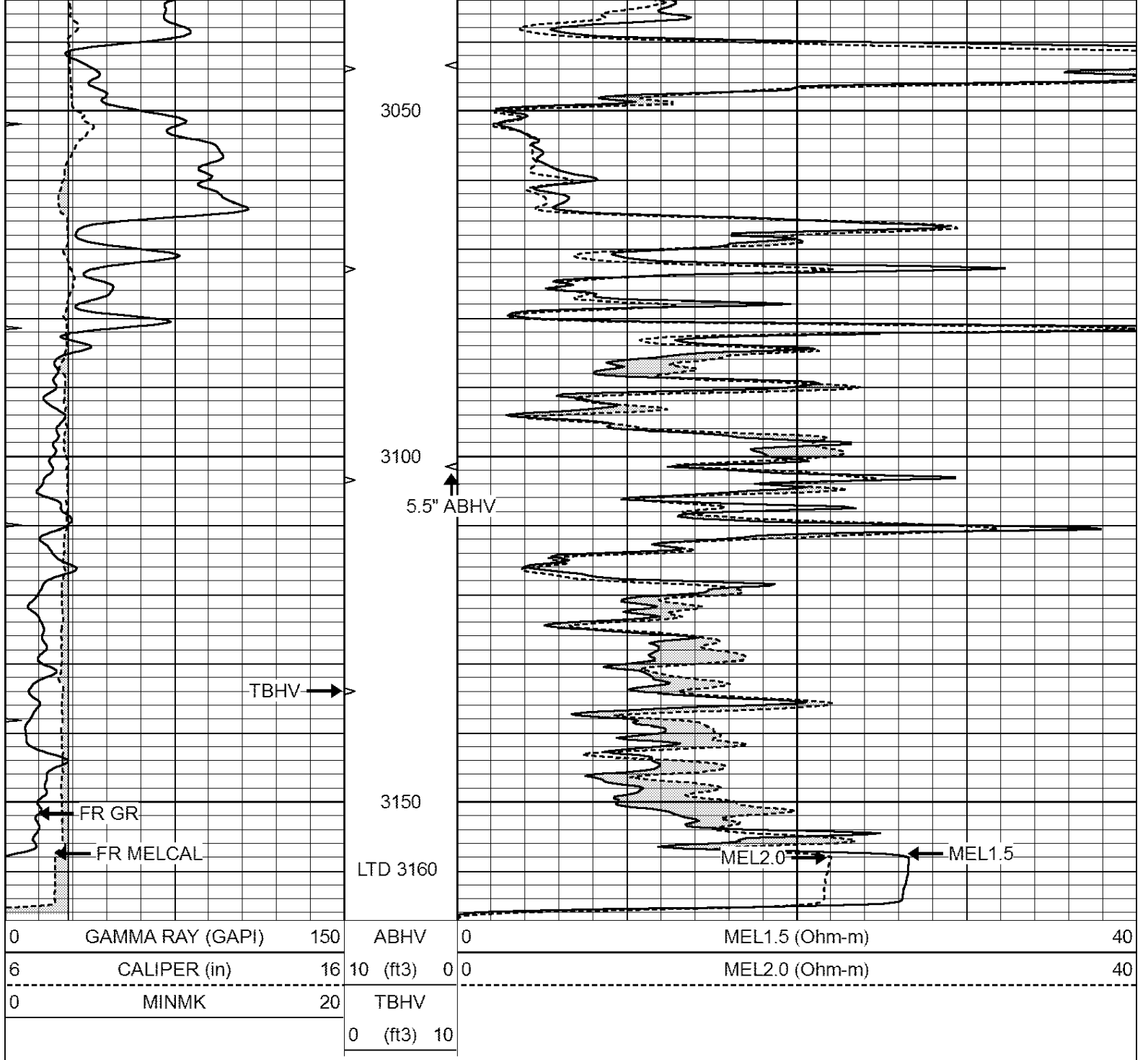
2850

2900

2950

3000



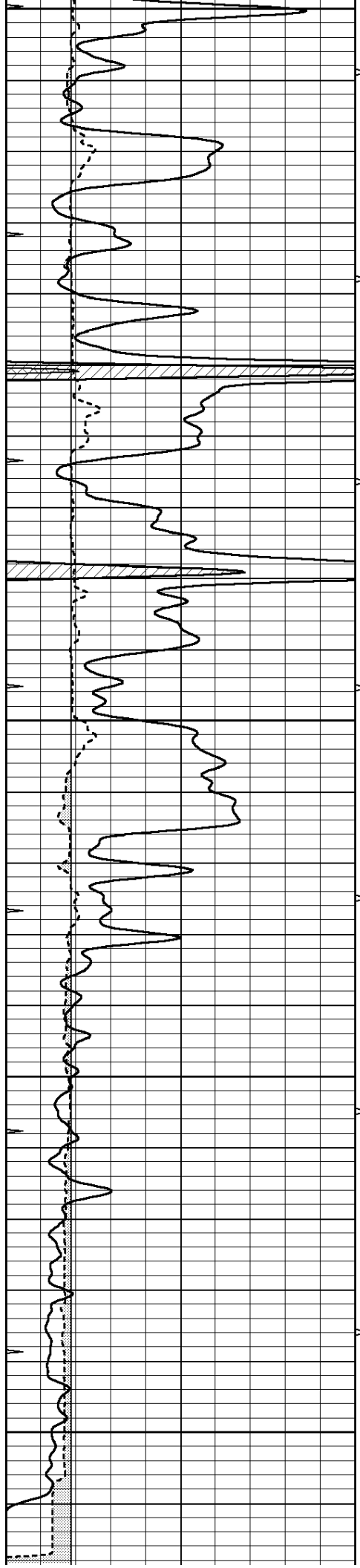


SUPERIOR
Hays,
Kansas

REPEAT SECTION

Database File: 008146ddn.db
 Dataset Pathname: pass5.2
 Presentation Format: micro
 Dataset Creation: Tue Jan 24 23:18:15 2012
 Charted by: Depth in Feet scaled 1:240

0	GAMMA RAY (GAPI)	150	ABHV	0	MEL1.5 (Ohm-m)	40
6	CALIPER (in)	16	10 (ft3)	0	MEL2.0 (Ohm-m)	40
0	MINMK	20	TBHV			
			0 (ft3)	10		



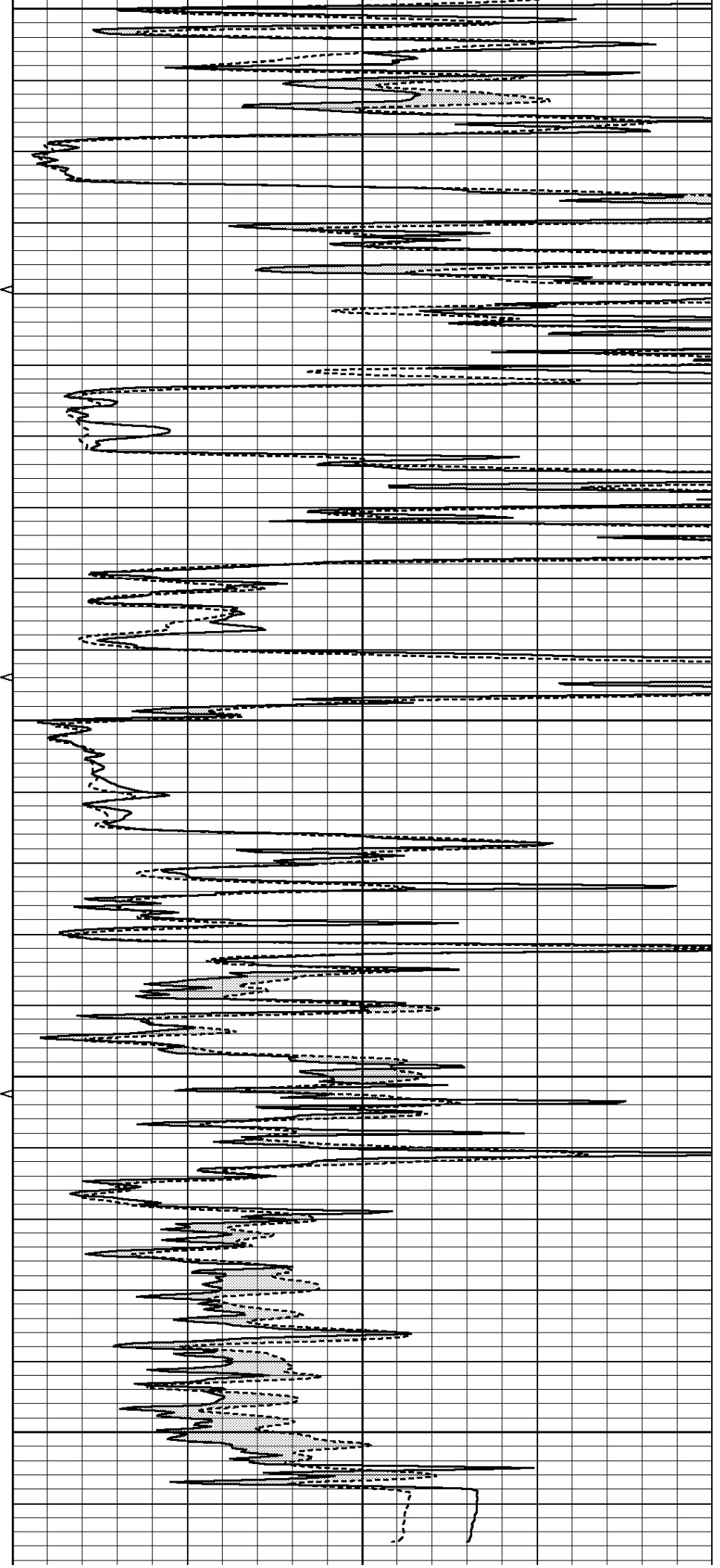
2950

3000

3050

3100

3150



0	GAMMA RAY (GAPI)	150	ABHV	0	MEL1.5 (Ohm-m)	40
6	CALIPER (in)	16	10 (ft3) 0	0	MEL2.0 (Ohm-m)	40
0	MINMK	20	TBHV			
			0 (ft3) 10			

Calibration Report

Database File: 008146ddn.db
Dataset Pathname: pass6.3
Dataset Creation: Tue Jan 24 23:31:01 2012 by Calc Open-Cased 110302

MICRO Calibration Report

Serial Number:	2	
Tool Model:	PROBE	
Performed:	Wed Jan 18 23:09:40 2012	
Caliper Calibration:	Gain=3.753	Offset=3.357
References	Low Cal	High Cal
Readings	7.600	14.000
	1.130	2.835
1.5" Calibration:	Gain=40.000	Offset=0.000
References	Low Cal	High Cal
Readings	0.000	20.000
	0.065	1.210
2" Calibration:	Gain=58.000	Offset=0.000
References	Low Cal	High Cal
Readings	0.000	20.000
	0.012	1.043

Gamma Ray Calibration Report

Serial Number:	GR4	
Tool Model:	OPEN	
Performed:	Tue Jan 24 22:52:24 2012	
Calibrator Value:	200.0	GAPI
Background Reading:	0.0	cps
Calibrator Reading:	189.0	cps
Sensitivity:	1.0000	GAPI/cps