



DIGITAL LOG (785) 625-3858

Dual Compensated Porosity Log

15-135-25,331-00-00

API No.

Company Trans Pacific Oil Corporation
 Well Michaelis No. 2
 Field Keilman Southeast
 County Ness
 State Kansas

Location 2970' FSL & 330' FEL
 Sec: 32 Twp: 17 S Rge: 24 W

Permanent Datum Ground Level Elevation 2328
 Log Measured From Kelly Bushing 9 Ft. Above Perm. Datum
 Drilling Measured From Kelly Bushing

Other Services
 DIL
 Elevation
 K.B. 2337
 D.F.
 G.L. 2328

Date	12/29/2011	
Run Number	One	
Type Log	CNL / CDL	
Depth Driller	4455	
Depth Logger	4455	
Bottom Logged Interval	4434	
Top Logged Interval	3400	
Type Fluid In Hole	Chemical	
Salinity, PPM CL	7000	
Density Level	9.3	
Level	Full	
Max. Rec. Temp. F	123	
Operating Rig Time	2 Hours	
Equipment -- Location	91 Hays	
Recorded By	D Kerr	
Witnessed By	Max Lovely	

Borehole Record				Casing Record			
Run No.	Bit	From	To	Size	Wgt.	From	To
1	12.25	00	214	8.625	24#	00	214
2	7.875	214	4455				

<<< Fold Here >>>

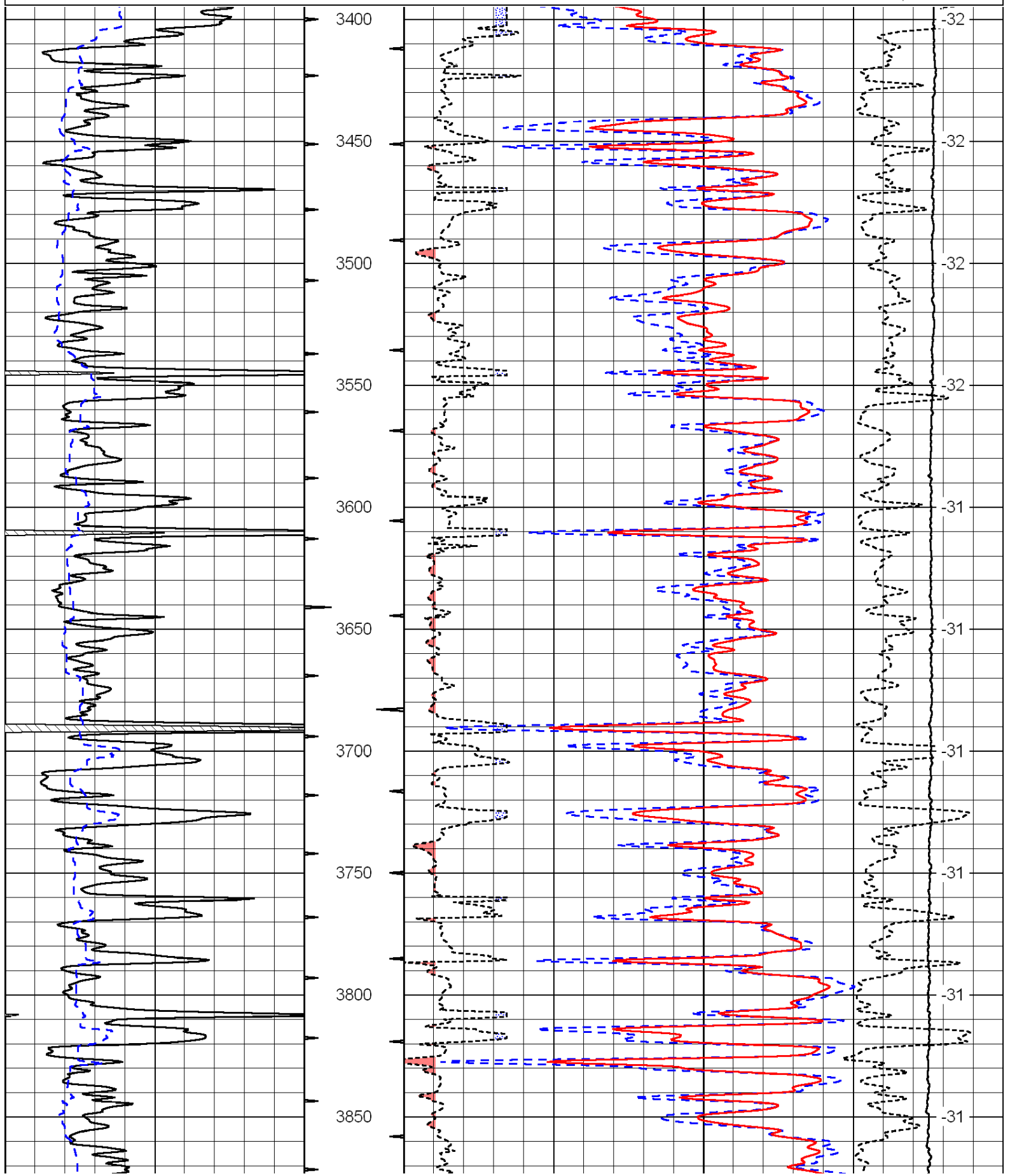
All interpretations are opinions based on inferences from electrical or other measurements and we cannot and do not guarantee the accuracy or correctness of any interpretation, and we shall not, except in the case of gross or willful negligence on our part, be liable or responsible for any loss, costs, damages, or expenses incurred or sustained by anyone resulting from any interpretation made by any of our officers, agents or employees. These interpretations are also subject to our general terms and conditions set out in our current Price Schedule.

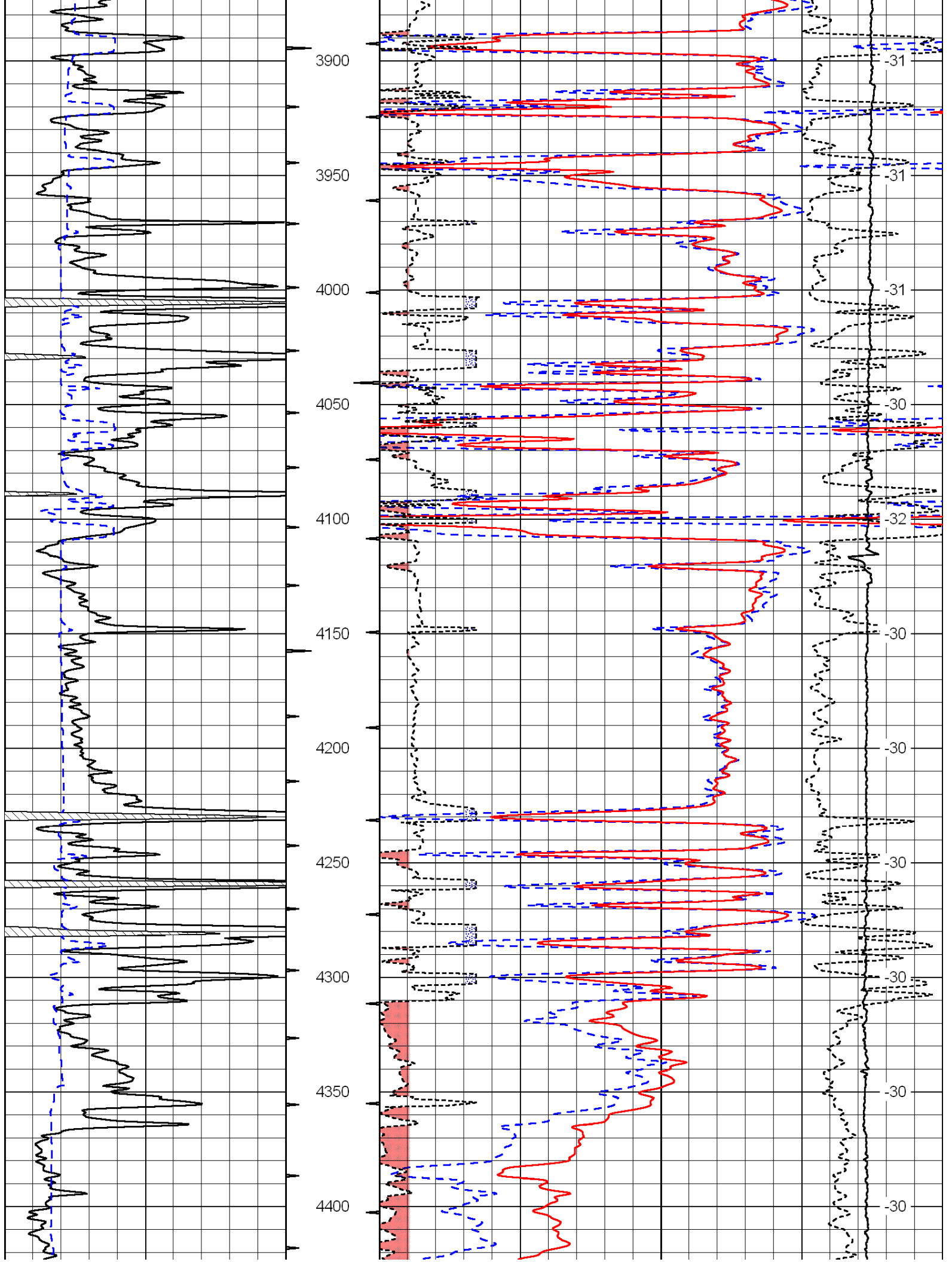
Comments

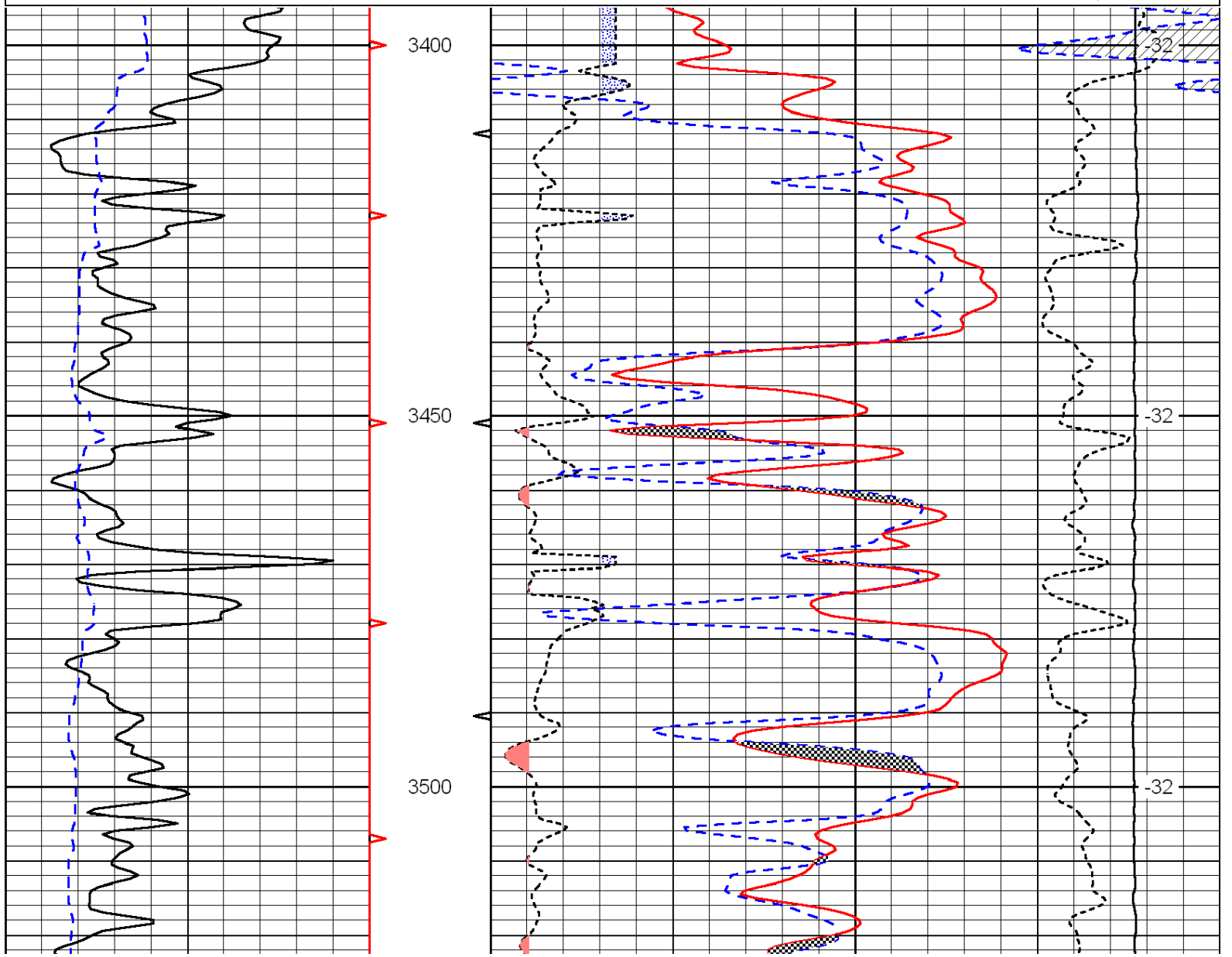
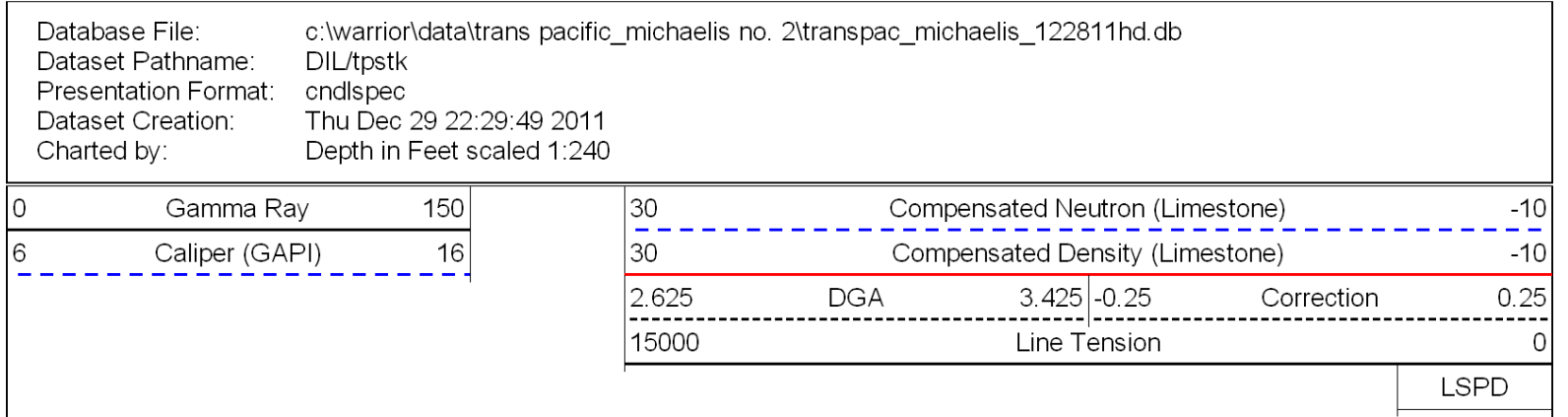
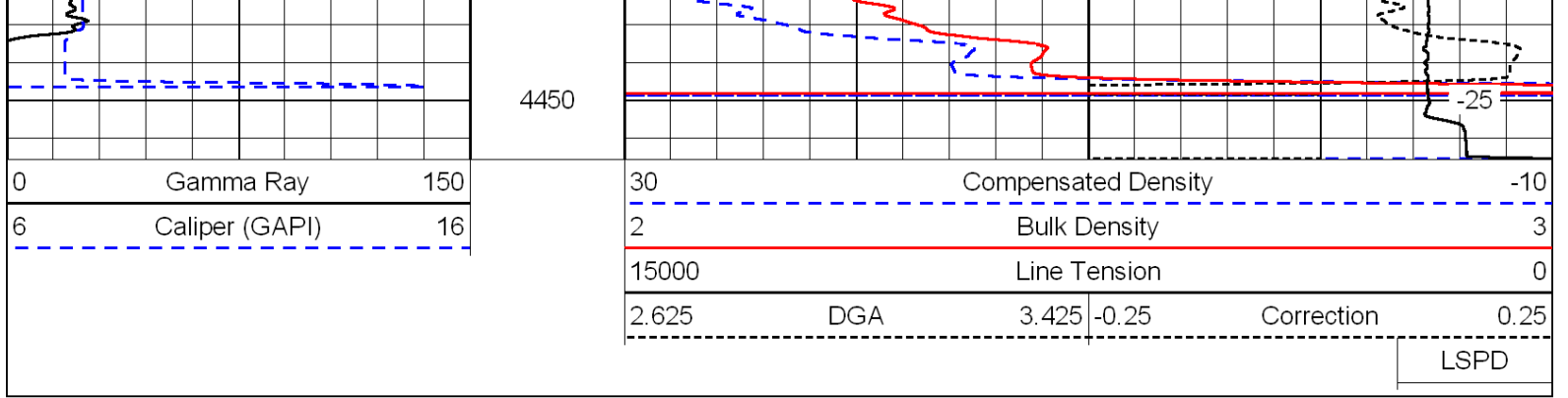
Thank you for using Log-Tech, Inc.
 (785) 625-3858
 Ransom KS, 3 West to N Rd,
 7 1/2 S, West Into

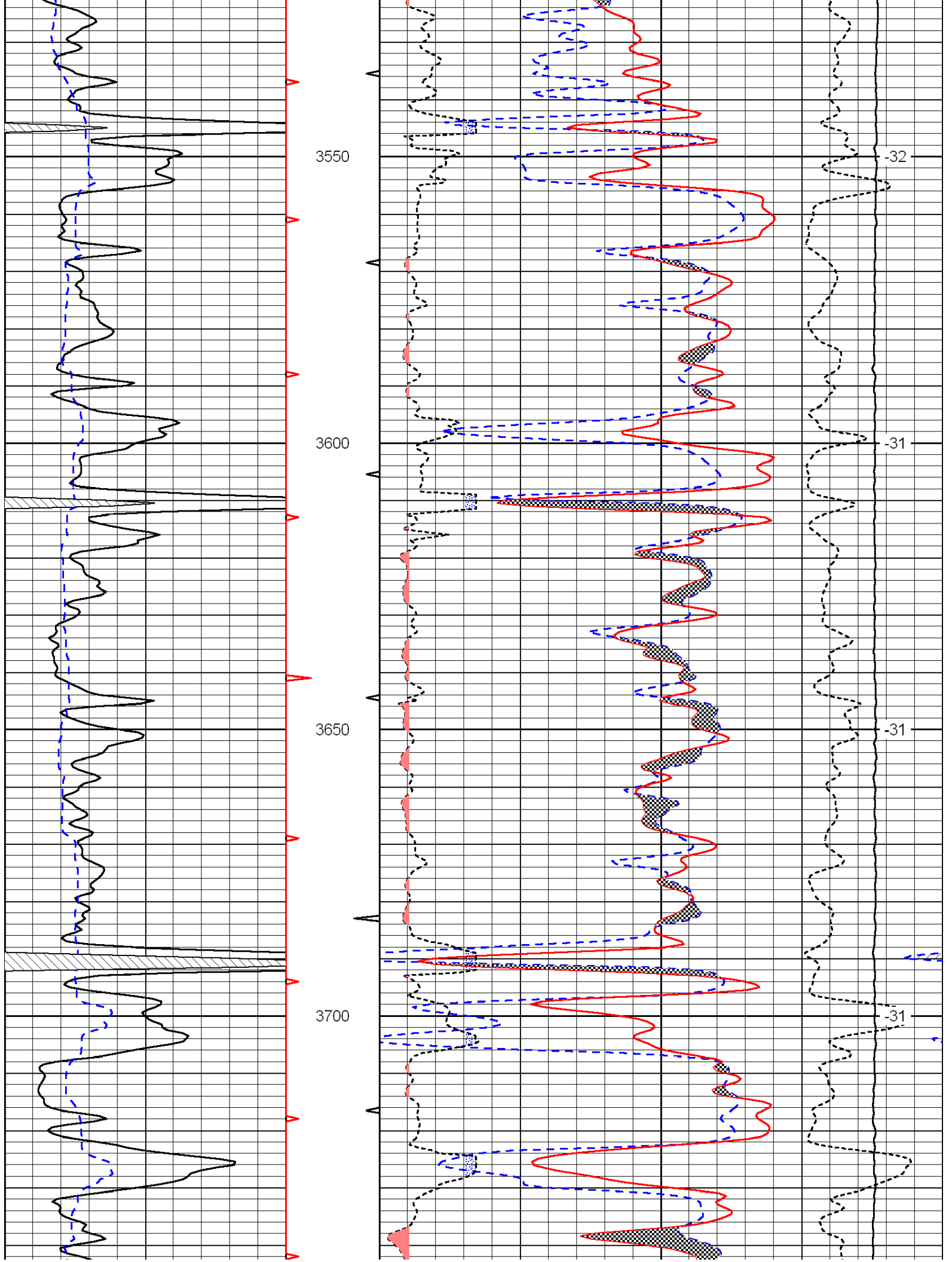
0	Gamma Ray	150
6	Caliper (GAPI)	16

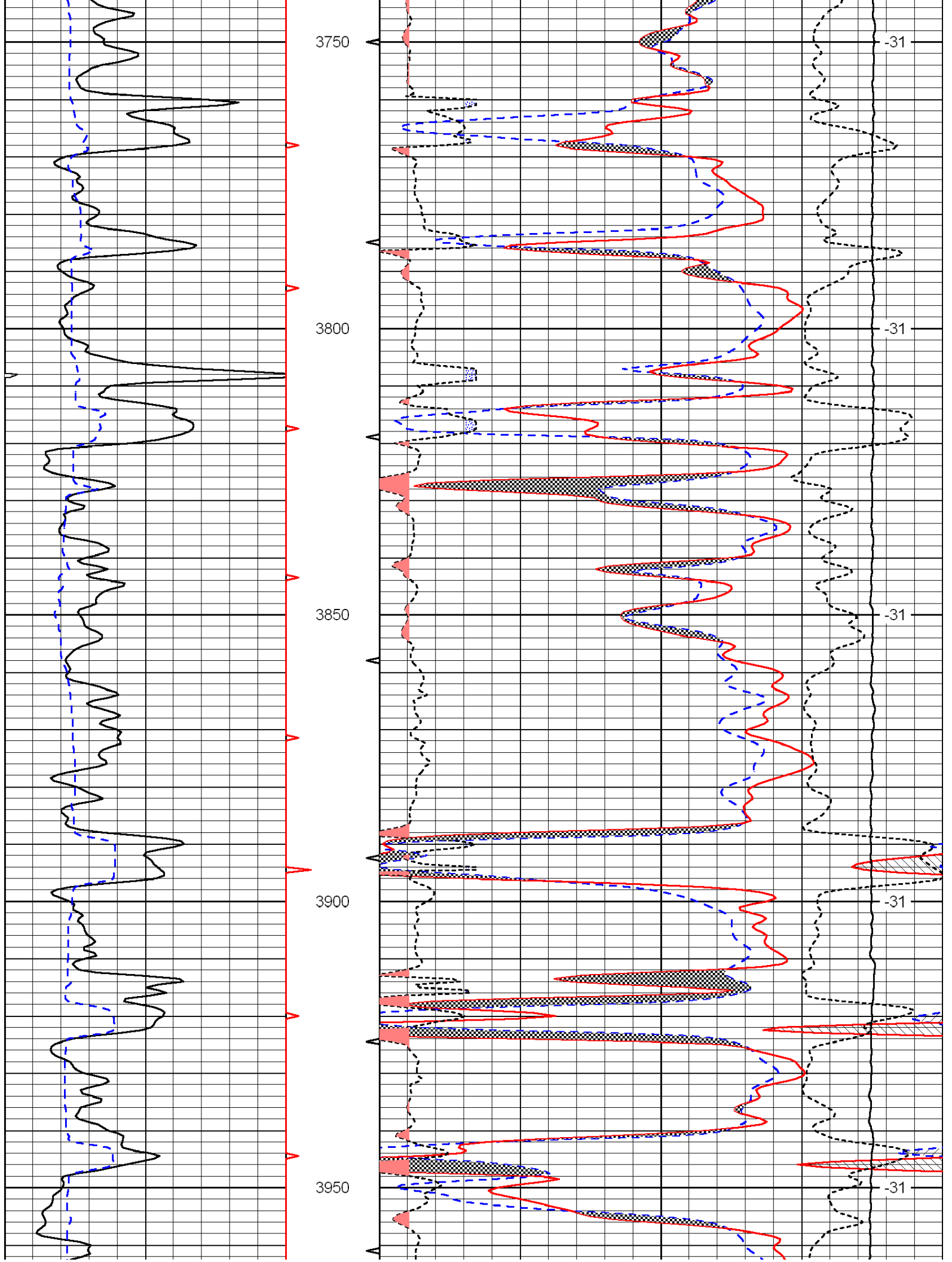
30	Compensated Density		-10
2	Bulk Density		3
15000	Line Tension		0
2.625	DGA	3.425	-0.25
			Correction
			0.25
LSPD			

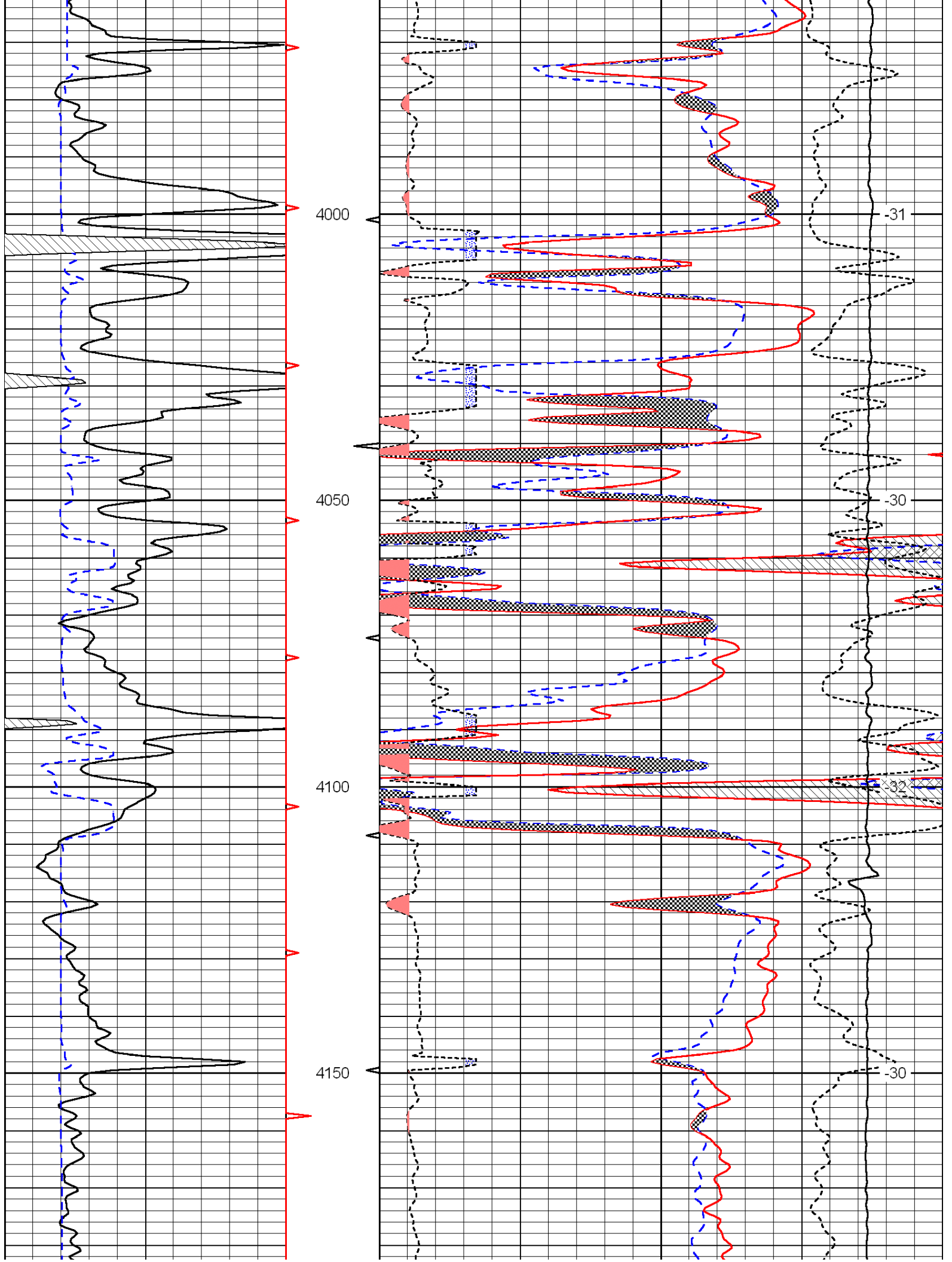


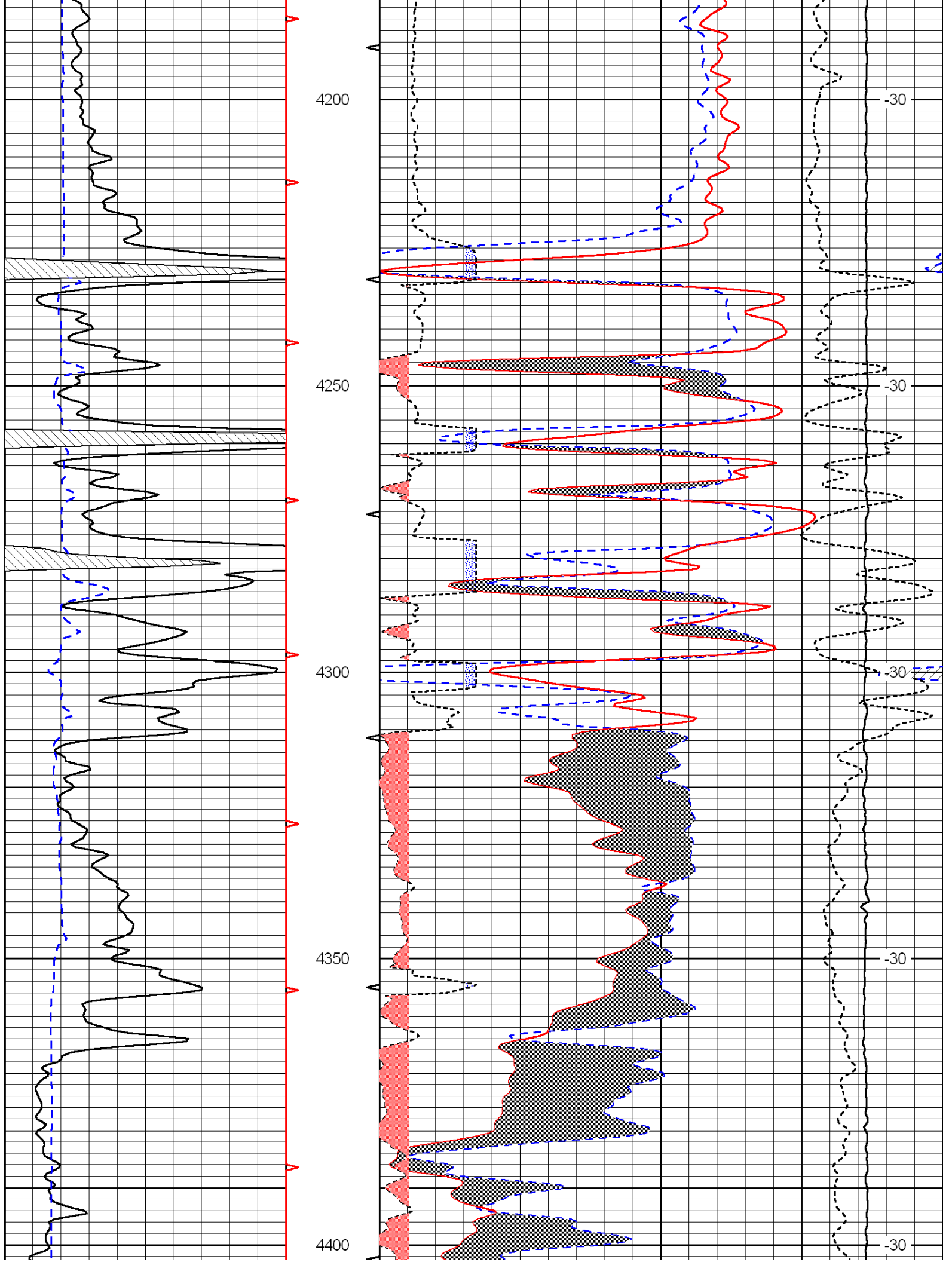


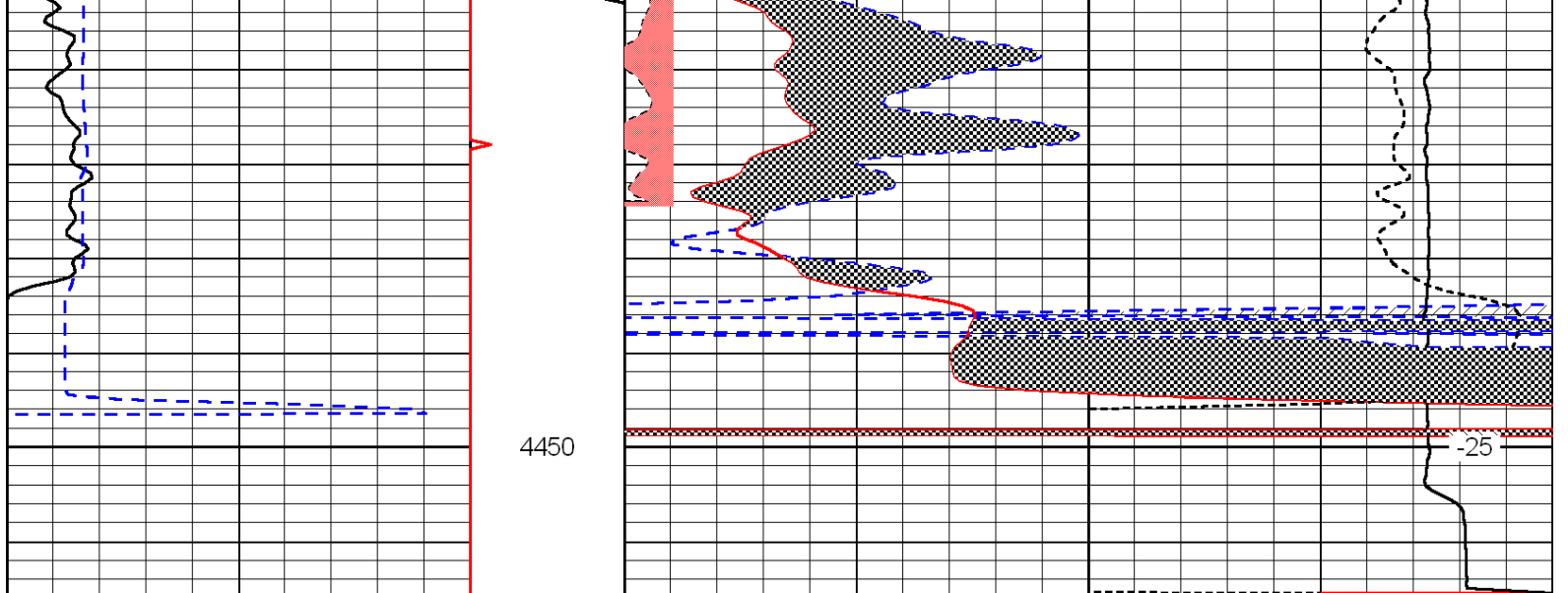












0	Gamma Ray	150
6	Caliper (GAPI)	16

30	Compensated Neutron (Limestone)			-10	
30	Compensated Density (Limestone)			-10	
2.625	DGA	3.425	-0.25	Correction	0.25
15000	Line Tension			0	

LSPD