



MIDWEST SURVEYS
 LOGGING - PERFORATING - CONSULTING SERVICES
 P.O. Box 88, Osawatomie, KS 68064
 913 / 755 - 2128

GAMMA RAY / NEUTRON / CCL

File No
 Company **Thomas Well Service, Inc.**
 Well **Taylor - Bird No. T-8**
 Field **Leavenworth West**
 County **Leavenworth** State **Kansas**
 Location **3332 FSL & 2648 FWL**
 Other Services
 Perforate

Sec. 23 Twp. 8S Rge. 21E Elevation 1012'
 Permanent Datum
 Log Measured From
 Drilling Measured From
 DT: NA
 GL: 1012'

Date
 Run Number
 Depth Logger
 Depth Interval
 Bottom Logged Interval
 Top Log Interval
 Fluid Level

Type Fluid
 Density / Viscosity
 Salinity - PPM Cl
 Max. Recorded Temp
 Equipment Comment Top
 Equipment No.
 Location
 Recorder By
 Witnessed By

Value
 NA
 NA
 NA
 NA
 107
 Oxidation
 Sleeve Washed
 Bed Thomas

BOREHOLE RECORD
 RUN NO. BIT FROM TO SIZE WGT CASING RECORD TO
 One 12.25" 41.0 8.55" 0.0 41.0
 Two 6.75" 41.0 1398.0 4.59" 10.5# 0.0 1398.0

<<< Fold Here >>>

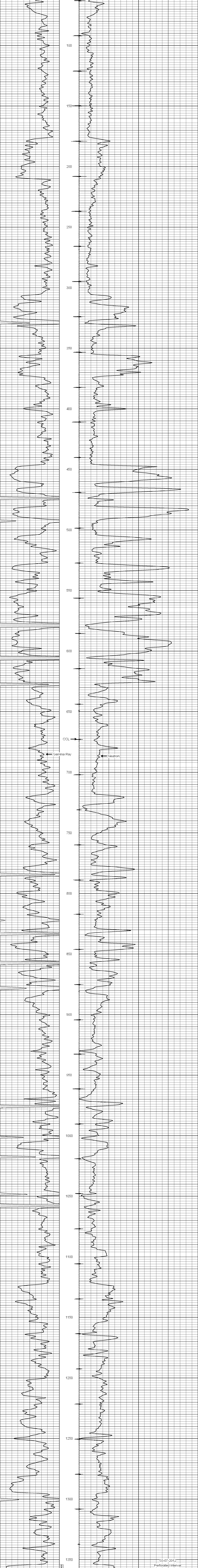
All interpretations are opinions based on inferences from electrical or other measurements and we cannot and do not guarantee the accuracy or correctness of any interpretation, and we shall not, except in the case of gross or willful negligence on our part, be liable or responsible for any loss, costs, damages, or expenses incurred or sustained by anyone resulting from any interpretation made by any of our officers, agents or employees. These interpretations are also subject to our general terms and conditions set out in our current Price Schedule.

Comments

Drilling Contractor :
Hat Drilling Company

Had to make a - 4' adjustment to line up with the Open Hole Log.

Database File: taylorft.db
 Dataset Pathname: pass1
 Presentation Format: gr-n-ccl
 Dataset Creation: Wed Mar 07 09:42:33 2012 by Log SCH 111116
 Charted by: Depth in Feet scaled 1:240



03-07-2012
 Perforated Interval
 1354.0 - 1361.0 29 Perfs
 3 3/8" DP 23 Gr ECG