



# Dual Induction Log

**DIGITAL LOG**  
(785) 625-3858

API No.	15-103-21,323-00-00		
Company	Thomas Well Service, Inc.		
Well	Taylor-Bird No. T-8		
Field	Leavenworth West		
County	Leavenworth State		
Location	3332' FSL & 2648' FWL		
Sec: 23	Twp: 8 S	Rge: 21 E	Other Services CNL/CDL

Permanent Datum	Ground Level	Elevation 1012	K.B. D.F. G.L. 1012
Log Measured From	Ground Level	0 Ft. Above Perm. Datum	
Drilling Measured From	Ground Level		
Date	8/31/2011		
Run Number	One		
Depth Driller	1398		
Depth Logger	1389		
Bottom Logged Interval	1388		
Top Log Interval	00		
Casing Driller	8.625 @ 41		
Casing Logger	40		
Bit Size	6.75		
Type Fluid in Hole	Chemical		
Salinity, ppm CL	N/A		
Density / Viscosity	9.0	42	
pH / Fluid Loss	N/A	N/A	
Source of Sample	Flowline		
Rm @ Meas. Temp	1.2	@ 80	
Rmf @ Meas. Temp	.90	@ 80	
Rmc @ Meas. Temp	1.62	@ 80	
Source of Rmf / Rmc	Charts		
Rm @ BHT	1.04	@ 92	
Operating Rig Time	3 Hours		
Max Rec. Temp. F	92		
Equipment Number	91		
Location	Hays		
Recorded By	K. Bange		
Witnessed By	Bob Thomas		

<<< Fold Here >>>

All interpretations are opinions based on inferences from electrical or other measurements and we cannot and do not guarantee the accuracy or correctness of any interpretation, and we shall not, except in the case of gross or willful negligence on our part, be liable or responsible for any loss, costs, damages, or expenses incurred or sustained by anyone resulting from any interpretation made by any of our officers, agents or employees. These interpretations are also subject to our general terms and conditions set out in our current Price Schedule.

### Comments

Thank you for using Log-Tech, Inc.  
(785) 625-3858

McClouth, N and E on Hwy 92 to 17rd, 3 N, 1/2 E on Mt. Olivet to 203 rd  
N 1 to Dead End, E into thru pasture gate.

Database File: c:\warrior\data\thomas well service\_taylor-bird no. t-8\thomas083111hd.db  
 Dataset Pathname: dil/thomstack  
 Presentation Format: dil2in  
 Dataset Creation: Wed Aug 31 05:48:43 2011  
 Charted by: Depth in Feet scaled 1:600

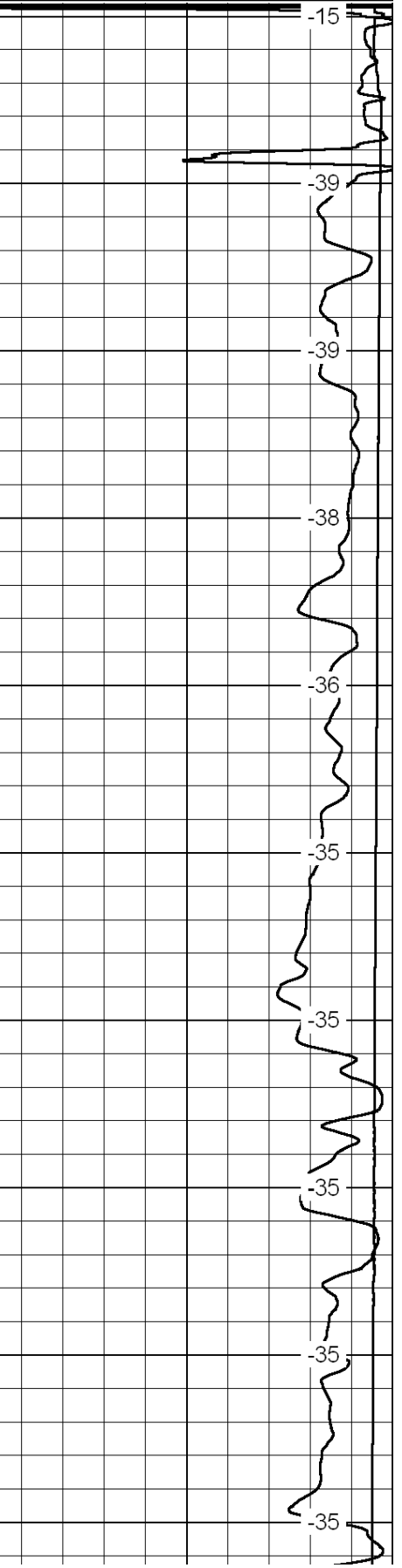
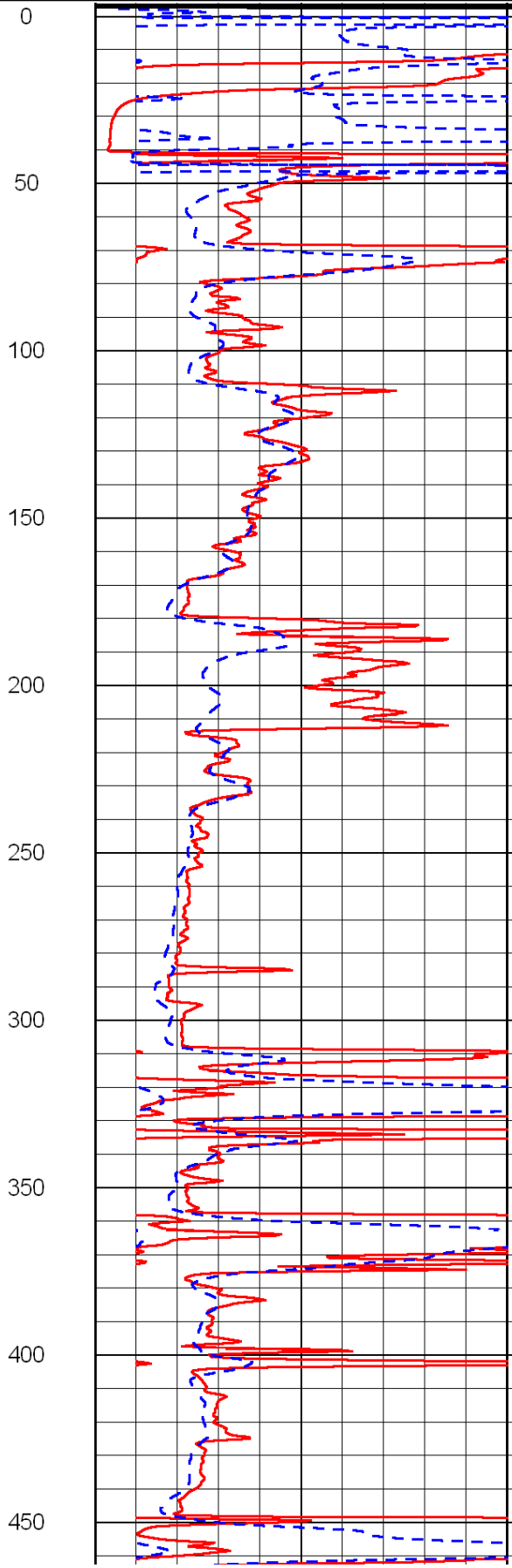
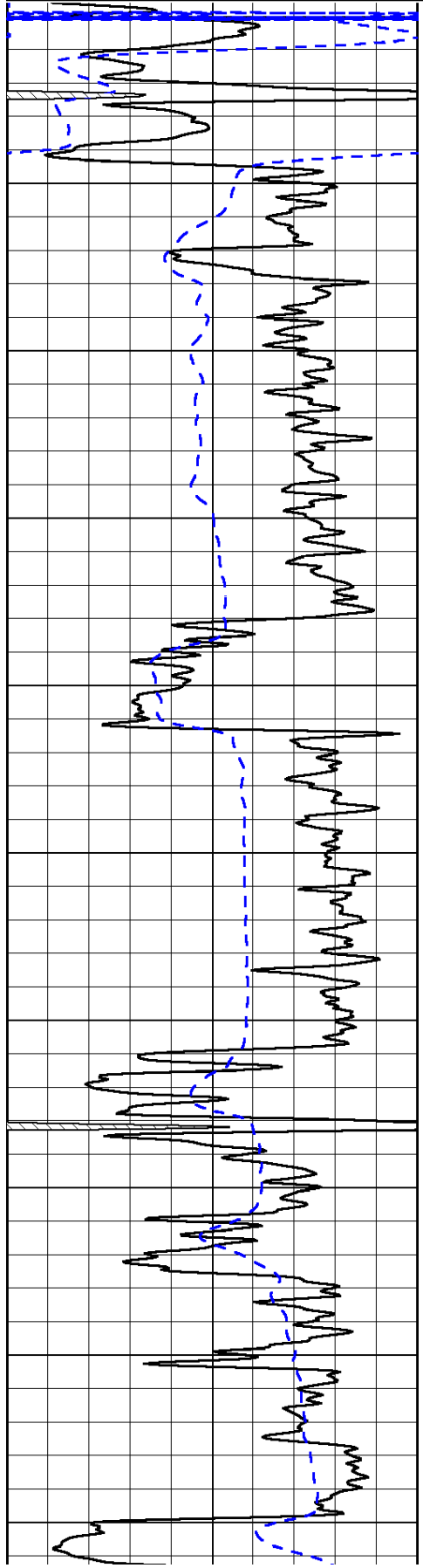
0	Gamma Ray	150
-200	SP (mV)	0

0	Shallow Resistivity	50
0	Deep Resistivity	50

LSPD

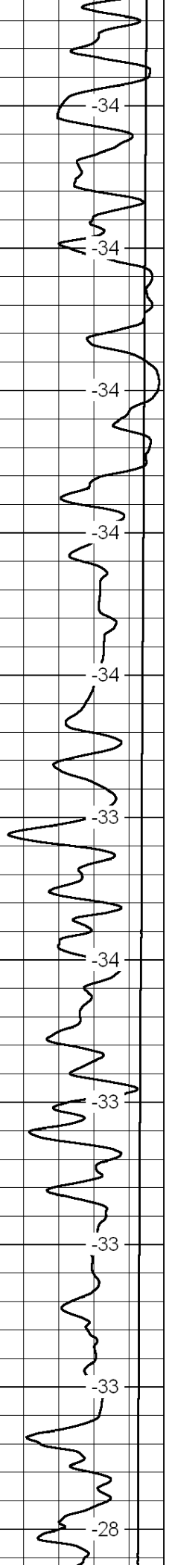
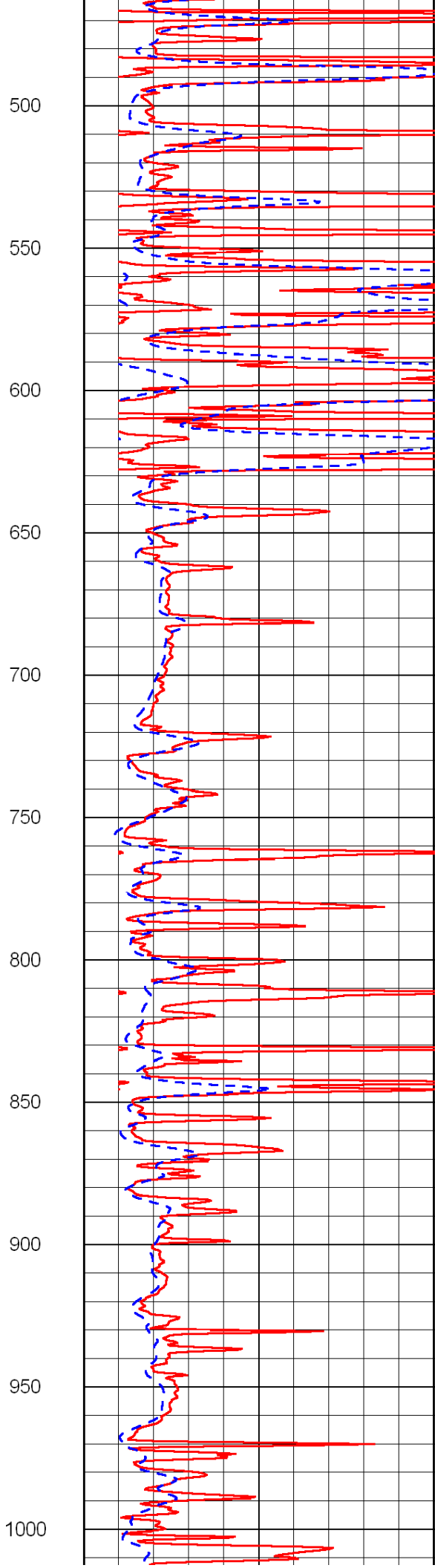
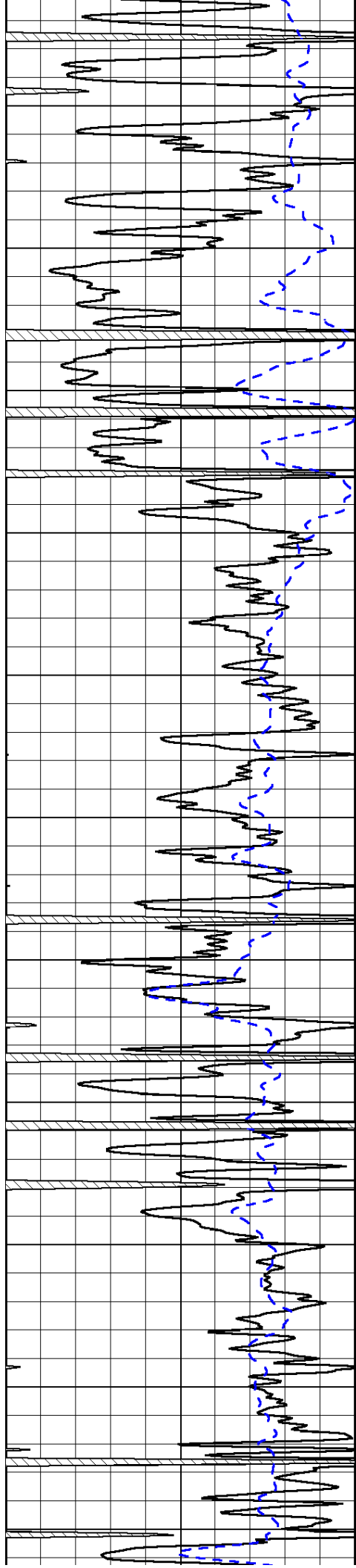
1000	Conductivity	0
15000	Line Tension	0

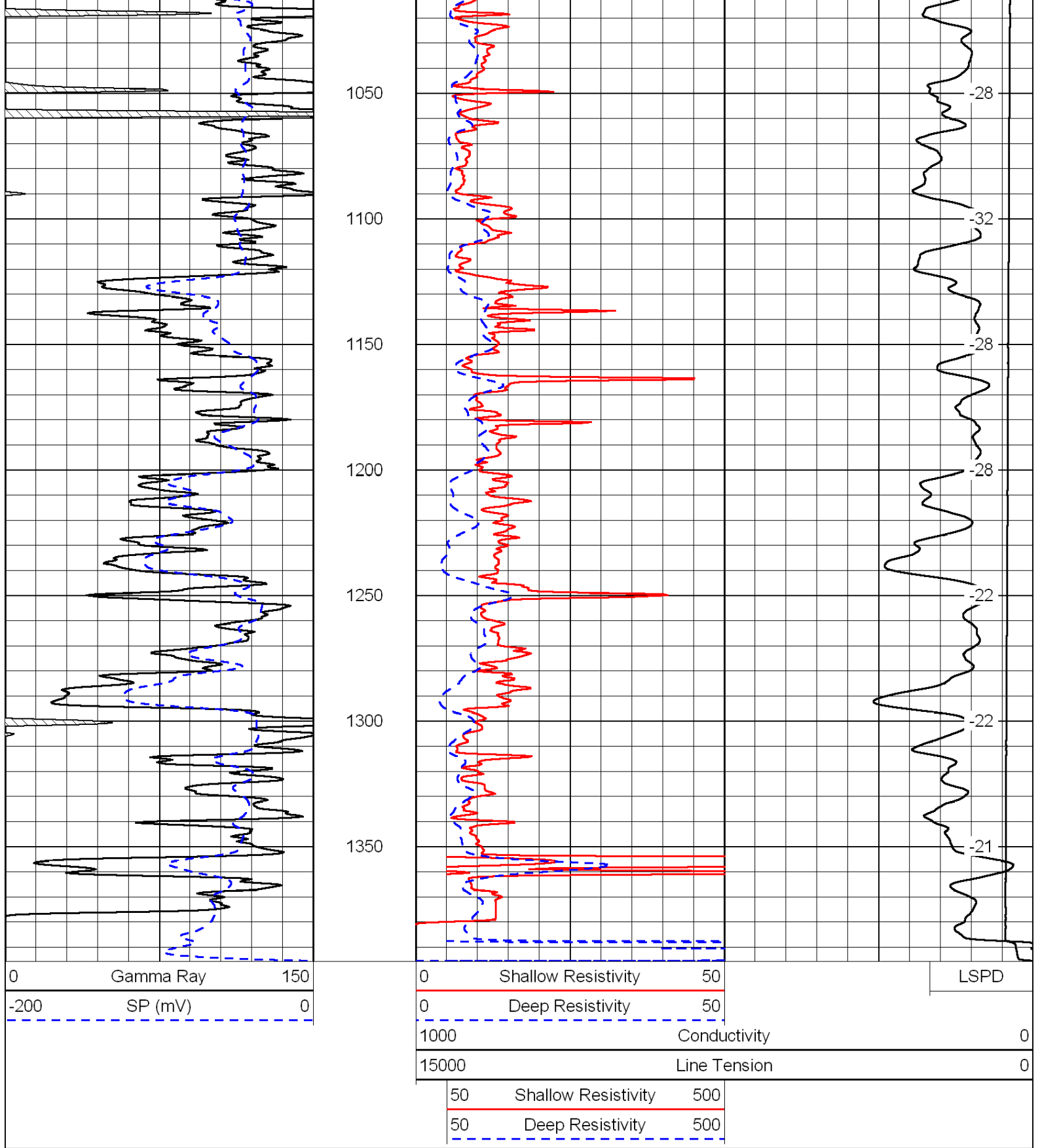
50	Shallow Resistivity	500
50	Deep Resistivity	500



0  
50  
100  
150  
200  
250  
300  
350  
400  
450

-15  
-39  
-39  
-38  
-36  
-35  
-35  
-35  
-35  
-35

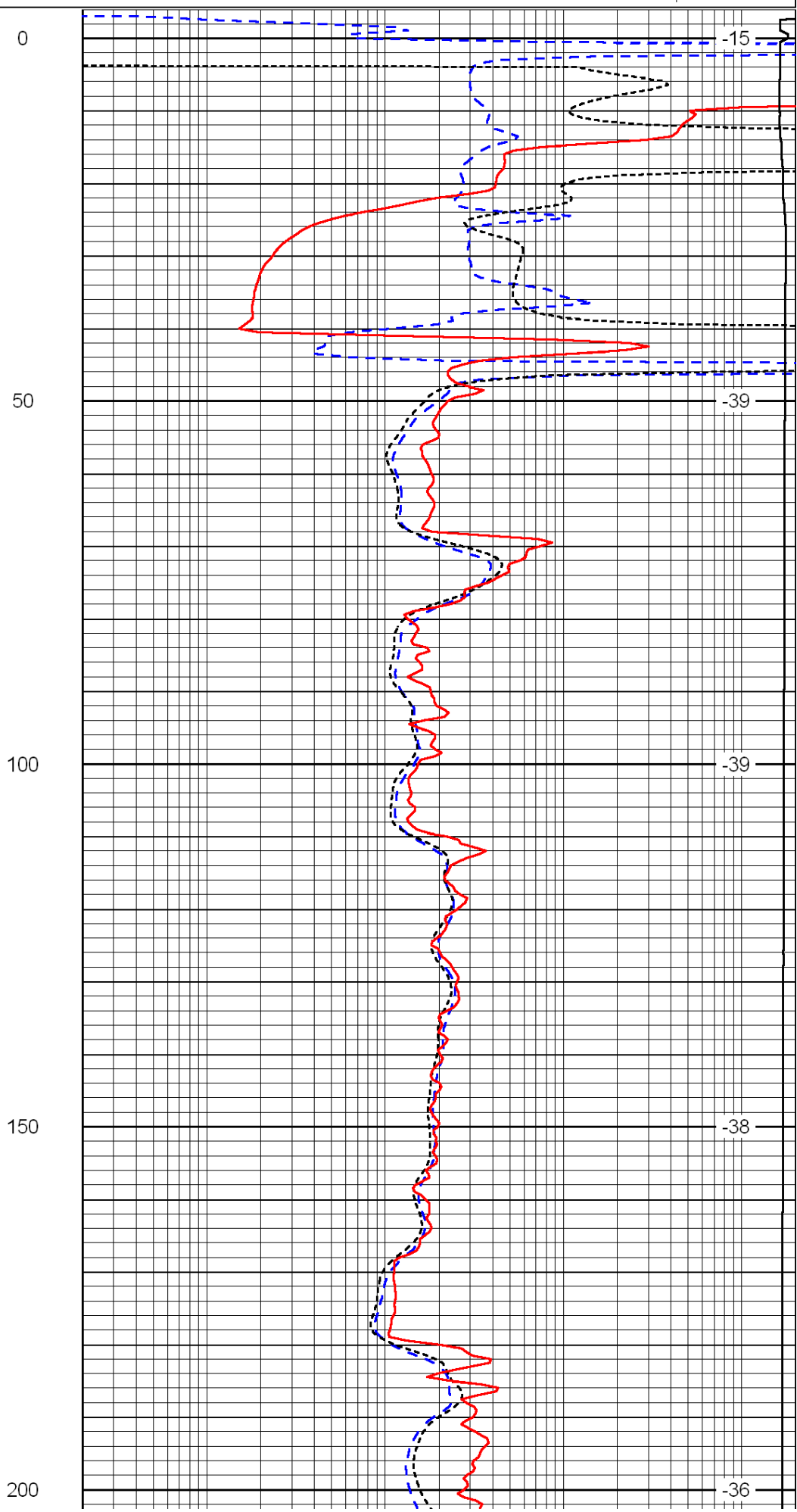
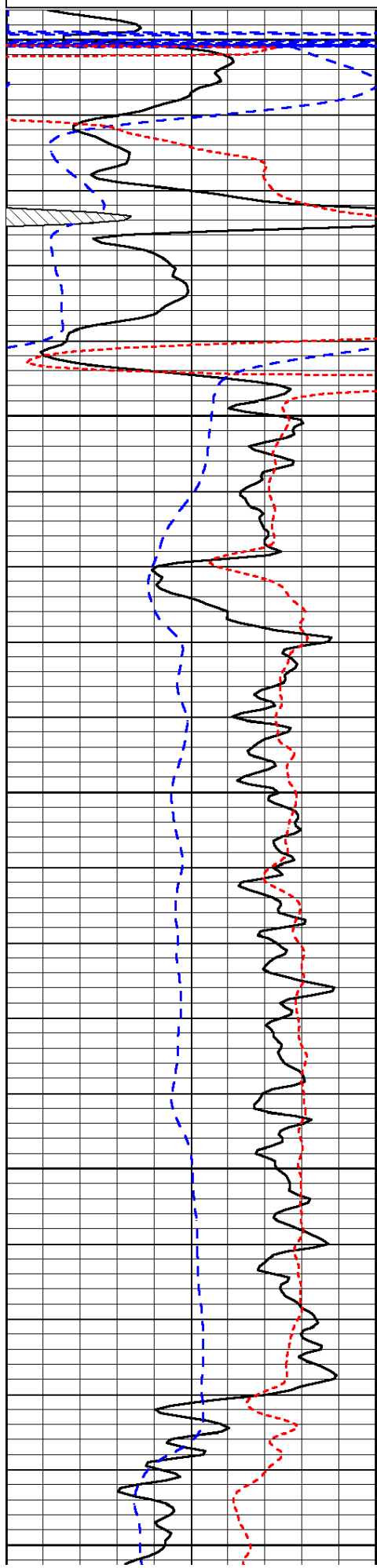


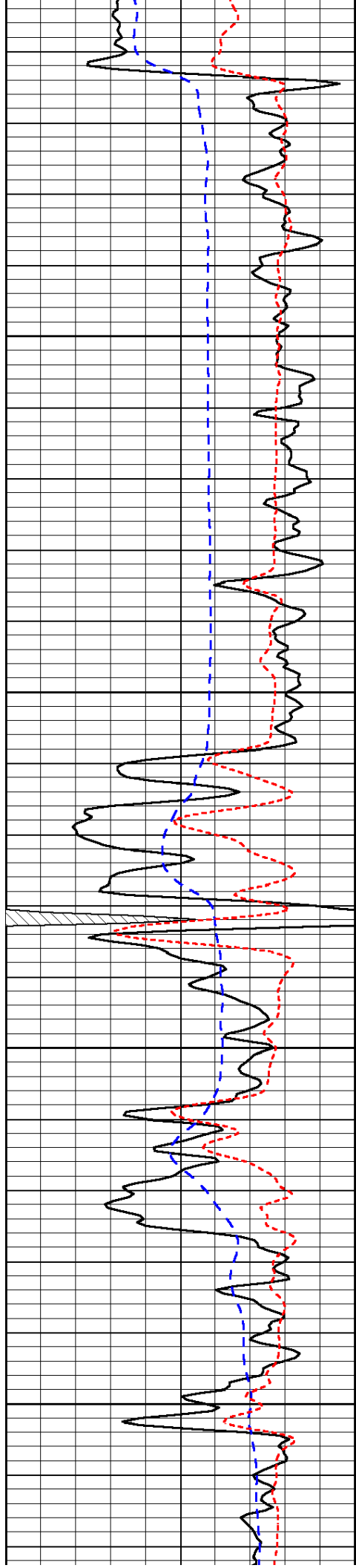


Database File: c:\warrior\data\thomas well service\_taylor-bird no. t-8\thomas083111hd.db  
 Dataset Pathname: dil/thomstack  
 Presentation Format: dil  
 Dataset Creation: Wed Aug 31 05:48:43 2011  
 Charted by: Depth in Feet scaled 1:240

0	Gamma Ray	150	0.2	Deep Resistivity	2000
-200	SP (mV)	0	0.2	Medium Resistivity	2000
150	Pvc / Pt	10	0.2	Shallow Resistivity	2000

LSPD



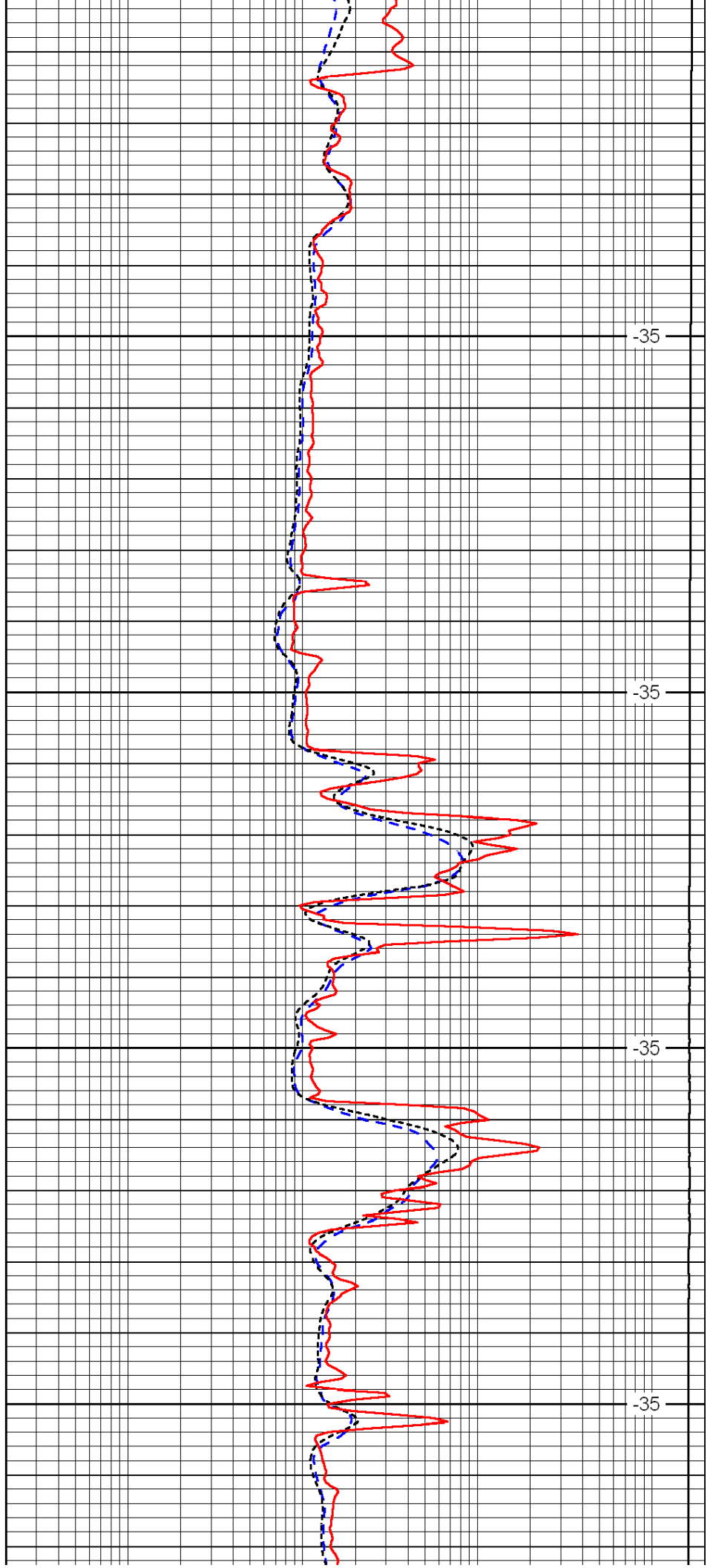


250

300

350

400

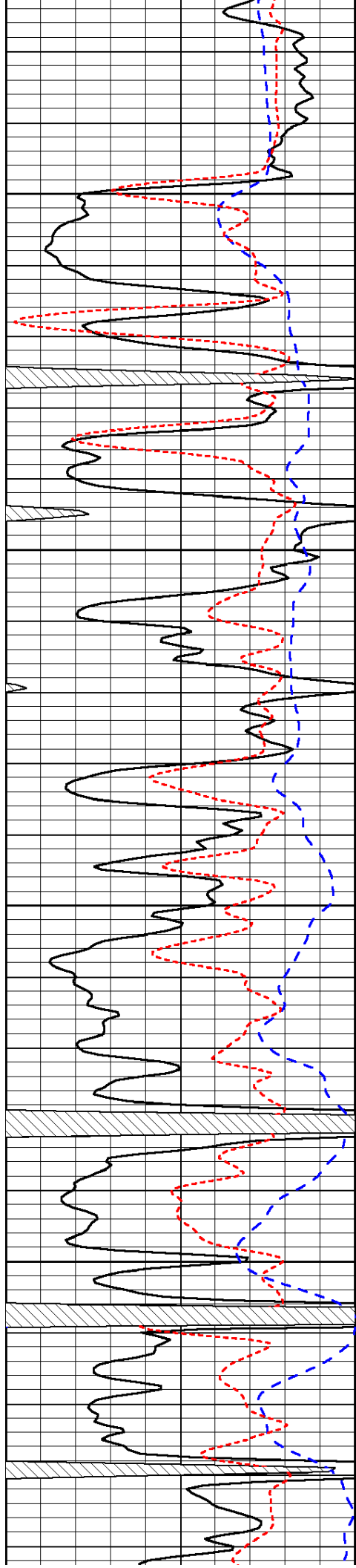


-35

-35

-35

-35

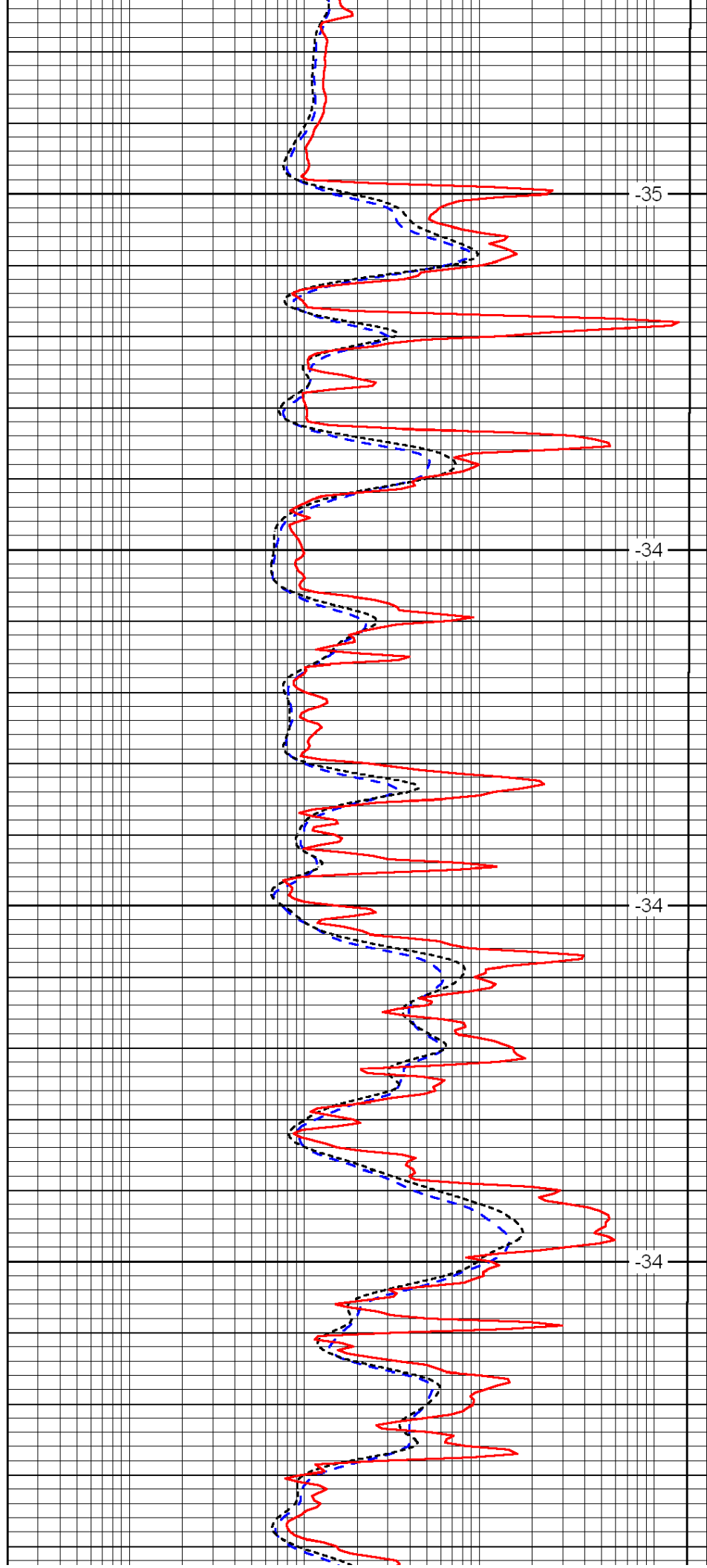


450

500

550

600

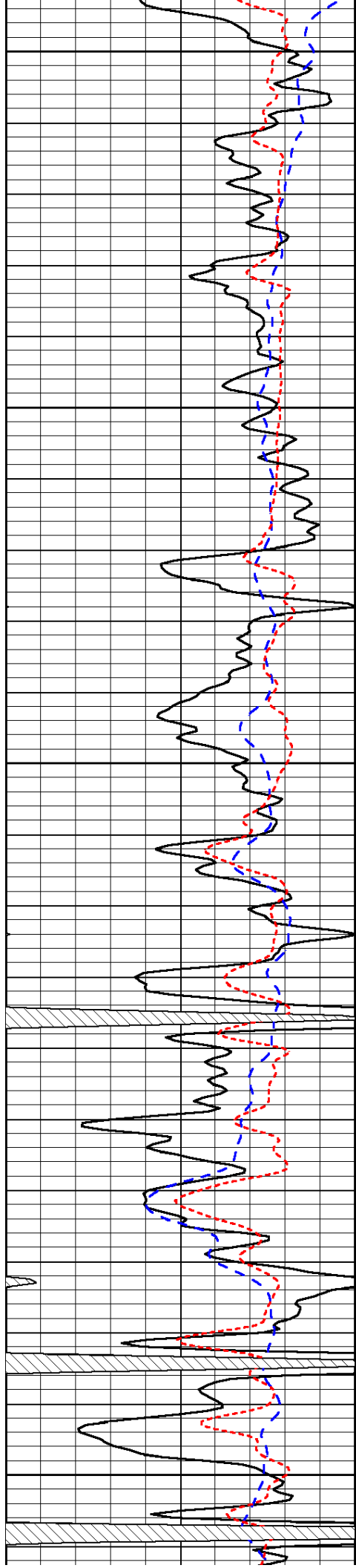


-35

-34

-34

-34



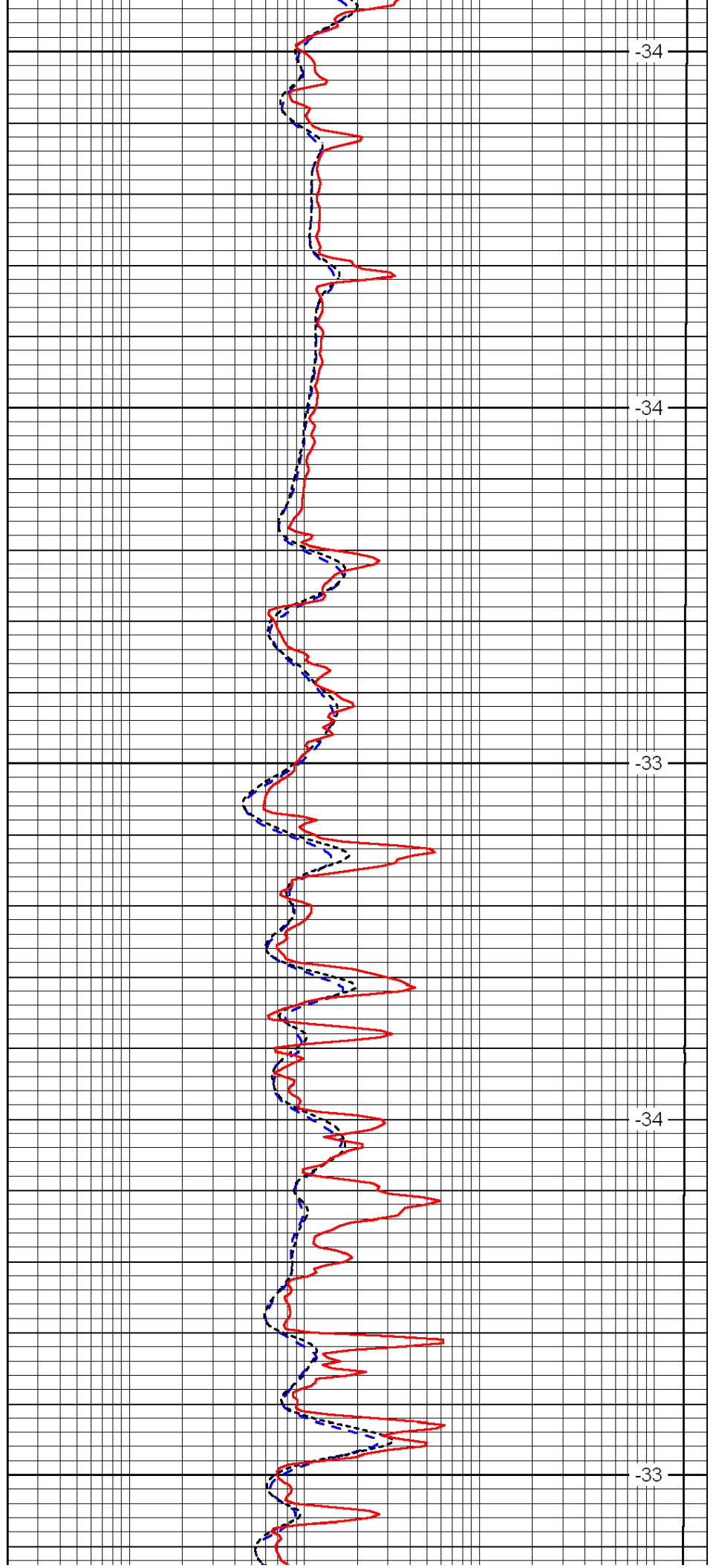
650

700

750

800

850



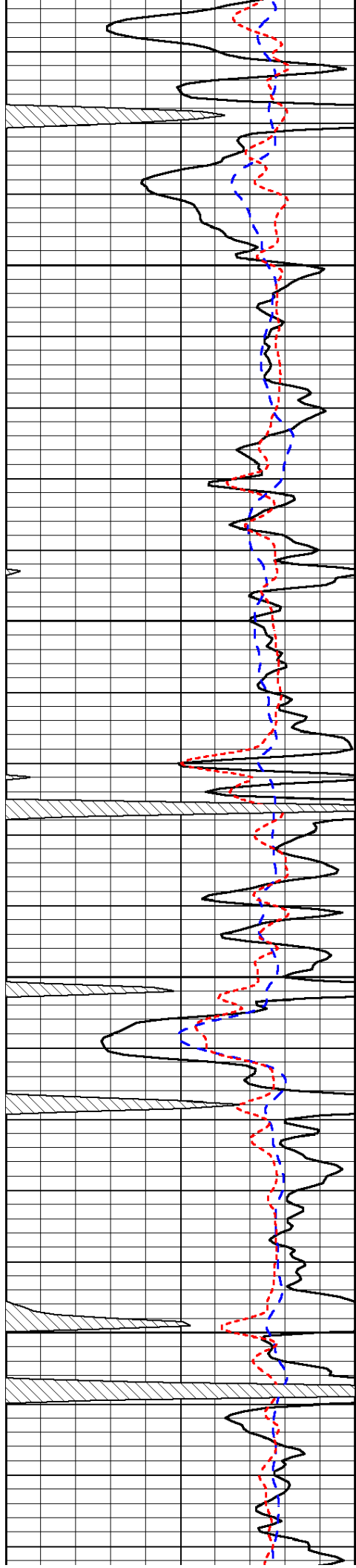
-34

-34

-33

-34

-33

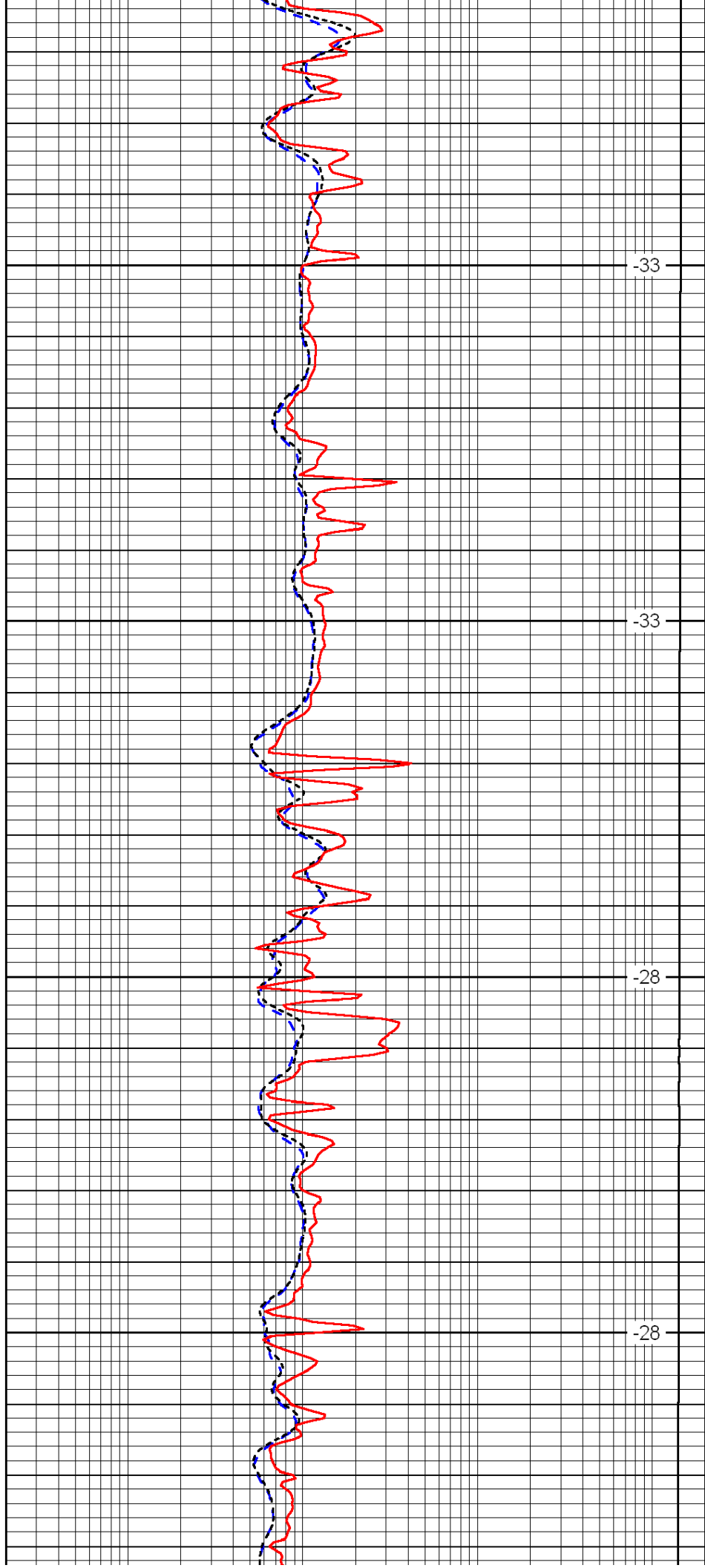


900

950

1000

1050

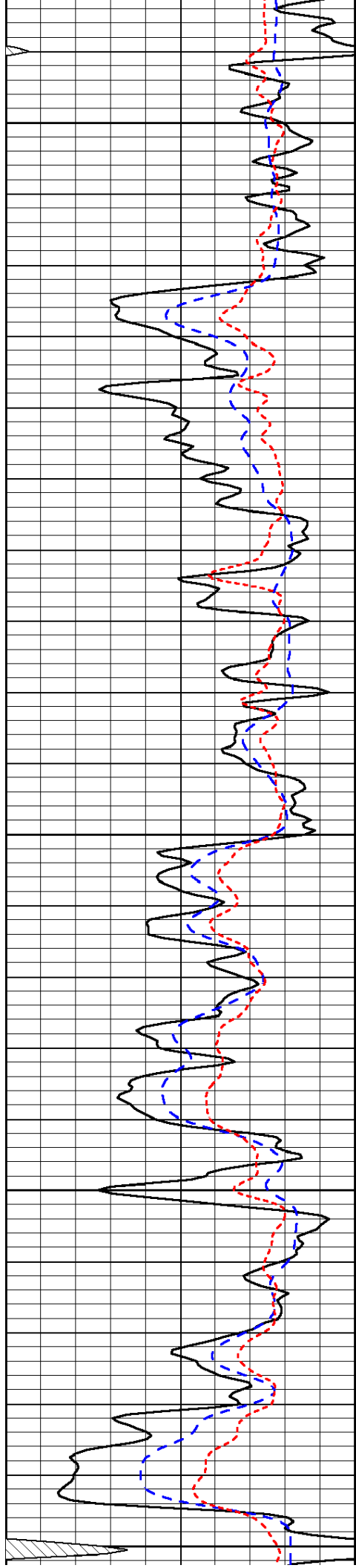


-33

-33

-28

-28



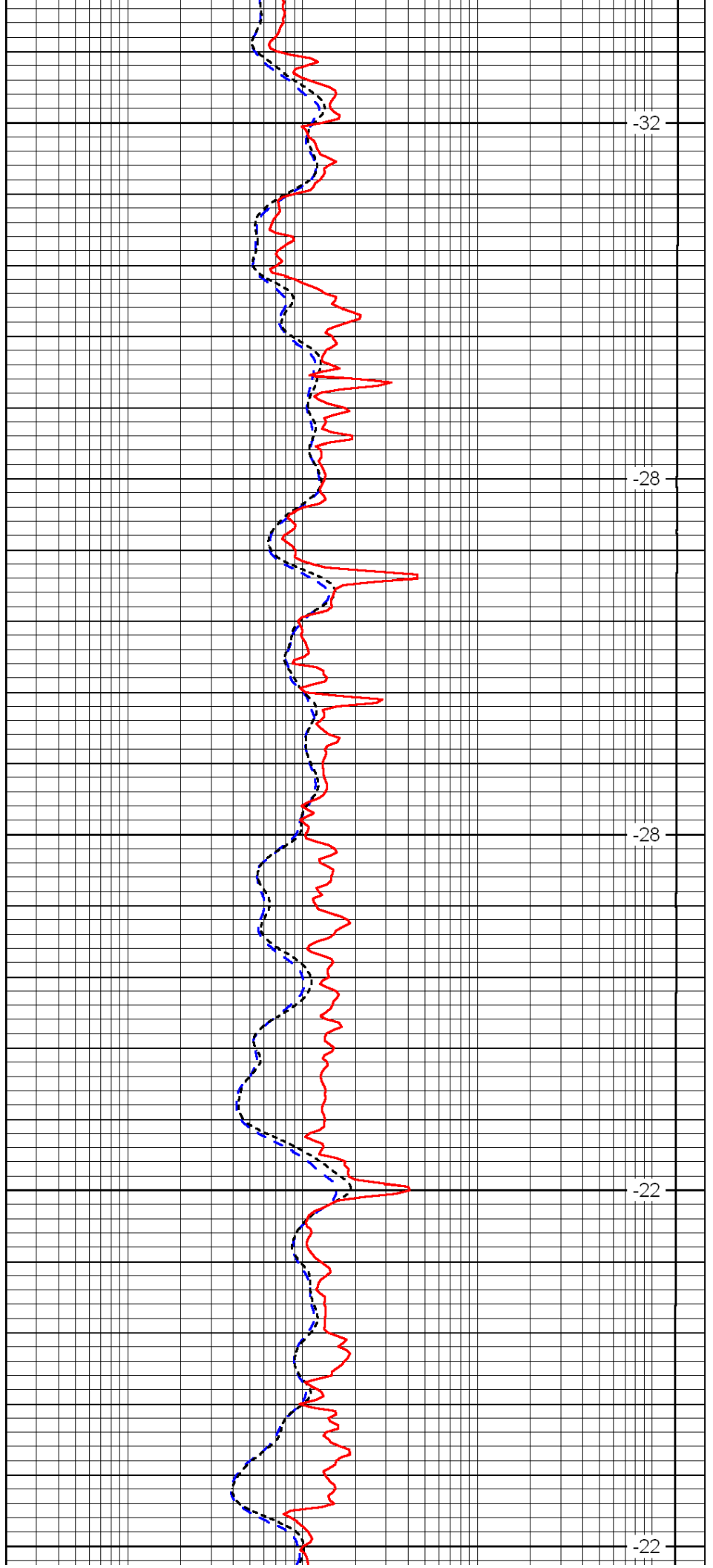
1100

1150

1200

1250

1300



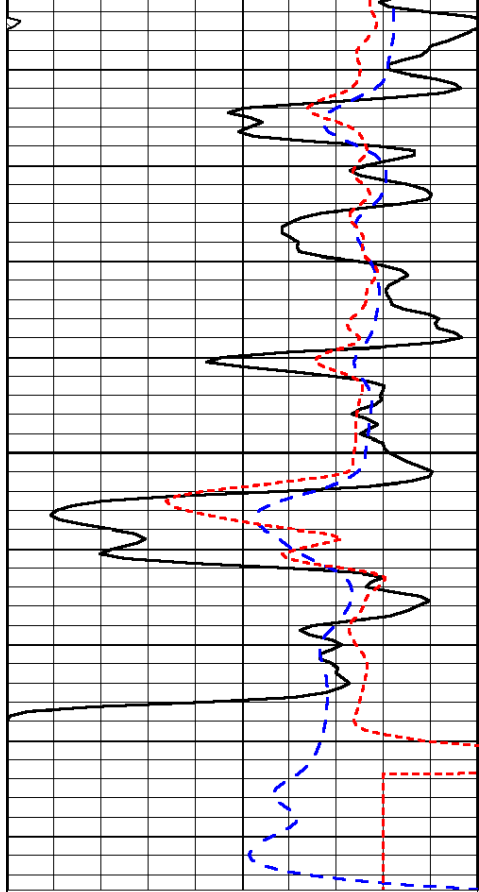
-32

-28

-28

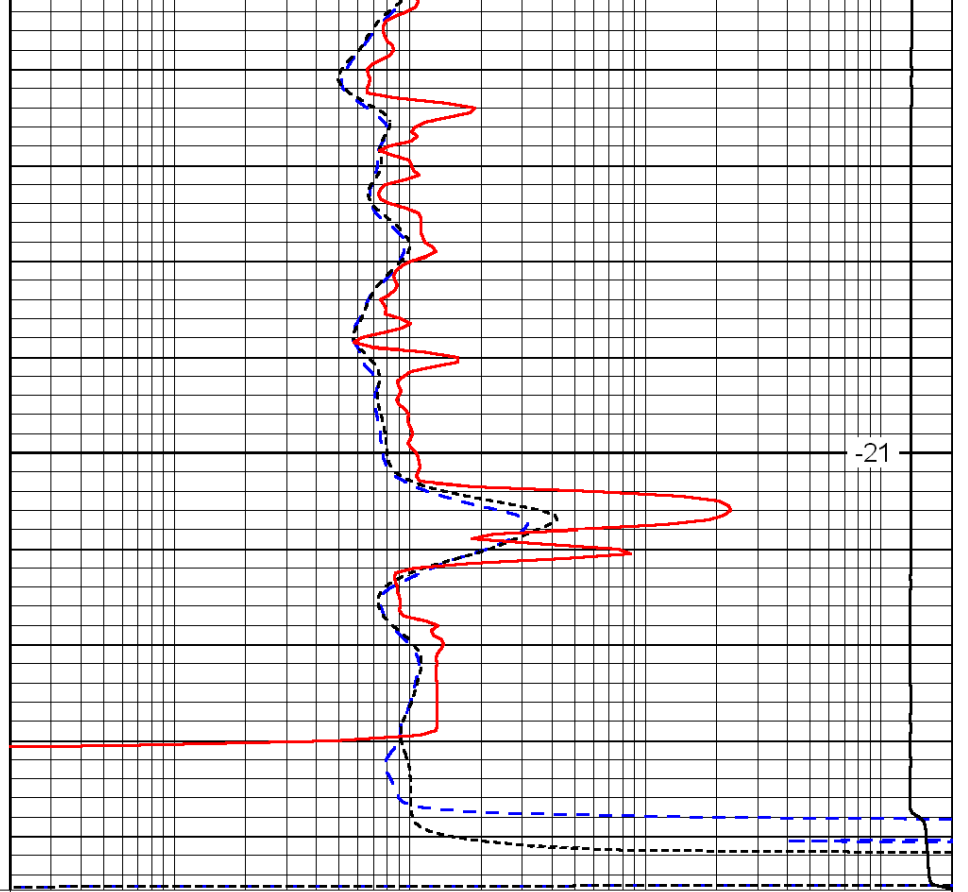
-22

-22



0	Gamma Ray	150
-200	SP (mV)	0
-160	Rxo / Rt	40

1350



-21

0.2	Deep Resistivity	2000
0.2	Medium Resistivity	2000
0.2	Shallow Resistivity	2000
15000	Line Tension	0

LSPD