



MIDWEST SURVEYS
 LOGGING - PERFORATING - CONSULTING SERVICES
 P.O. Box 68, Osawatomie, KS 66064
 913 / 755 - 2128

GAMMA RAY / NEUTRON / CCL

File No. Company Kansas Resources Exploration
 Well Knabe "D" No. KR-3
 Field Gardner
 County Johnson State Kansas

Location 4973' FSL & 3757' FEL
 NW-NW-NE-NW

Sec. 14 Typ. 14s Rge. 22e
 Permanent Datum GL Elevation 1041'
 Log Measured From GL
 Drilling Measured From GL

Date 09-30-2011
 Run Number One
 Depth Driller 896.5
 Depth Logger 895.5
 Bottom Logged Interval 200.0
 Top Log Interval Full

BORE-HOLE RECORD				CASING RECORD			
Run	BIT	FROM	TO	SIZE	WGHT	FROM	TO
One	9.875"	0.0	20.0	7.00"	0.0	0.0	20.0
Two	5.625"	20.0	939.0	2.875"	0.0	0.0	897.0

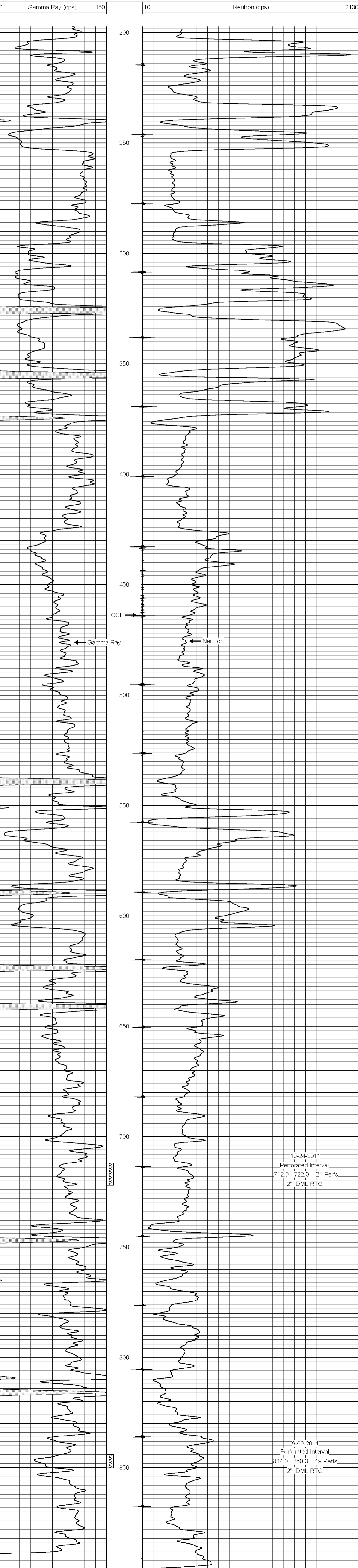
<<< Fold Here >>>

All interpretations are opinions based on inferences from electrical or other measurements and we cannot and do not guarantee the accuracy or correctness of any interpretation, and we shall not, except in the case of gross or willful negligence on our part, be liable or responsible for any loss, costs, damages, or expenses incurred or sustained by anyone resulting from any interpretation made by any of our officers, agents or employees. These interpretations are also subject to our general terms and conditions set out in our current Price Schedule.

Comments

Drilling Contractor :
 Utah Oil

Database File: knabe3kr.db
 Dataset Pathname: pass1
 Presentation Format: gr-n-ccl
 Dataset Creation: Tue Aug 30 14:25:17 2011 by Log Std Casedhole 07122
 Charted by: Depth in Feet scaled 1:240



10-24-2011
 Perforated Interval
 712.0 - 722.0 21 Perfs
 2" DML RTG

9-09-2011
 Perforated Interval
 844.0 - 850.0 19 Perfs
 2" DML RTG