



Dual Induction Log

DIGITAL LOG (785) 625-3858

API No. 15-135-25,331-00-00

Company Trans Pacific Oil Corporation
 Well Michaelis No. 2
 Field Keilman Southeast
 County Ness State Kansas

Location 2970' FSL & 330' FEL
 Sec: 32 Twp: 17 S Rge: 24 W

Permanent Datum Ground Level Elevation 2328
 Log Measured From Kelly Bushing 9 Ft. Above Perm. Datum
 Drilling Measured From Kelly Bushing

Other Services
 CNL/CDL
 Elevation
 K.B. 2337
 D.F.
 G.L. 2328

Date	12/29/2011
Run Number	One
Depth Driller	4455
Depth Logger	4455
Bottom Logged Interval	4454
Top Log Interval	200
Casing Driller	8.625 @ 214
Casing Logger	209
Bit Size	7.875
Type Fluid in Hole	Chemical
Salinity, ppm CL	7000
Density / Viscosity	9.3 51
pH / Fluid Loss	10 8
Source of Sample	Flowline
Rm @ Meas. Temp	.52 @ 54
Rmf @ Meas. Temp	.39 @ 54
Rmc @ Meas. Temp	.70 @ 54
Source of Rmf / Rmc	Charts
Rm @ BHT	.23 @ 123
Operating Rig Time	2 Hours
Max Rec. Temp. F	123
Equipment Number	91
Location	Hays
Recorded By	D.Kerr
Witnessed By	Max Lovely

<<< Fold Here >>>

All interpretations are opinions based on inferences from electrical or other measurements and we cannot and do not guarantee the accuracy or correctness of any interpretation, and we shall not, except in the case of gross or willful negligence on our part, be liable or responsible for any loss, costs, damages, or expenses incurred or sustained by anyone resulting from any interpretation made by any of our officers, agents or employees. These interpretations are also subject to our general terms and conditions set out in our current Price Schedule.

Comments

Thank you for using Log-Tech, Inc.
 (785) 625-3858

Ransom KS, 3 West to N Rd,
 7 1/2 S, West Into

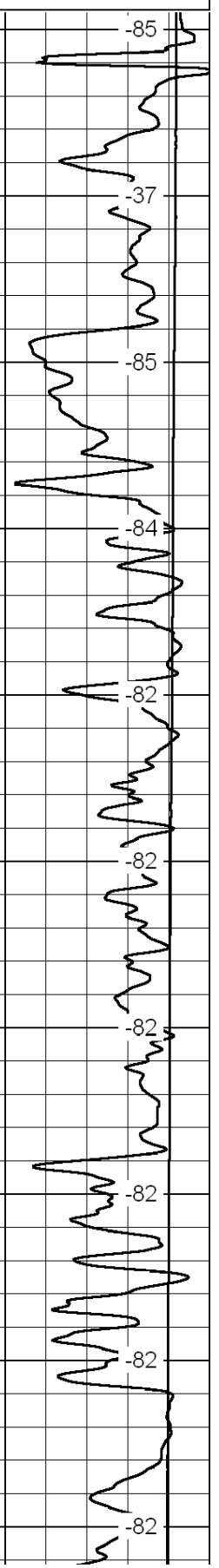
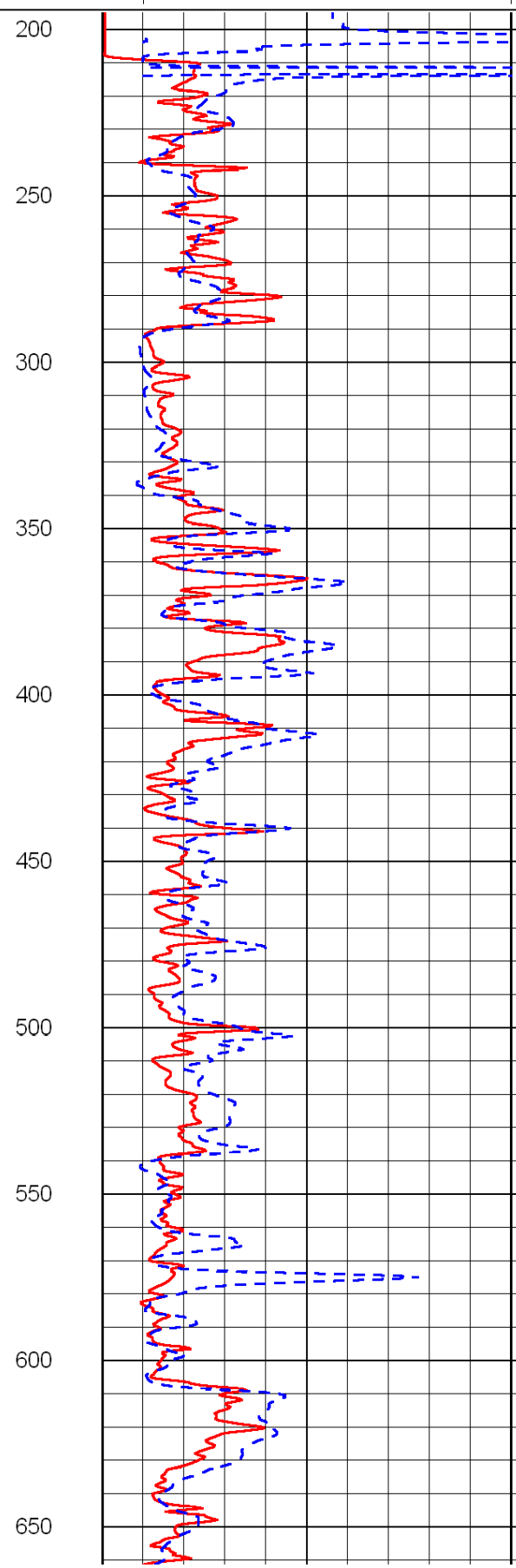
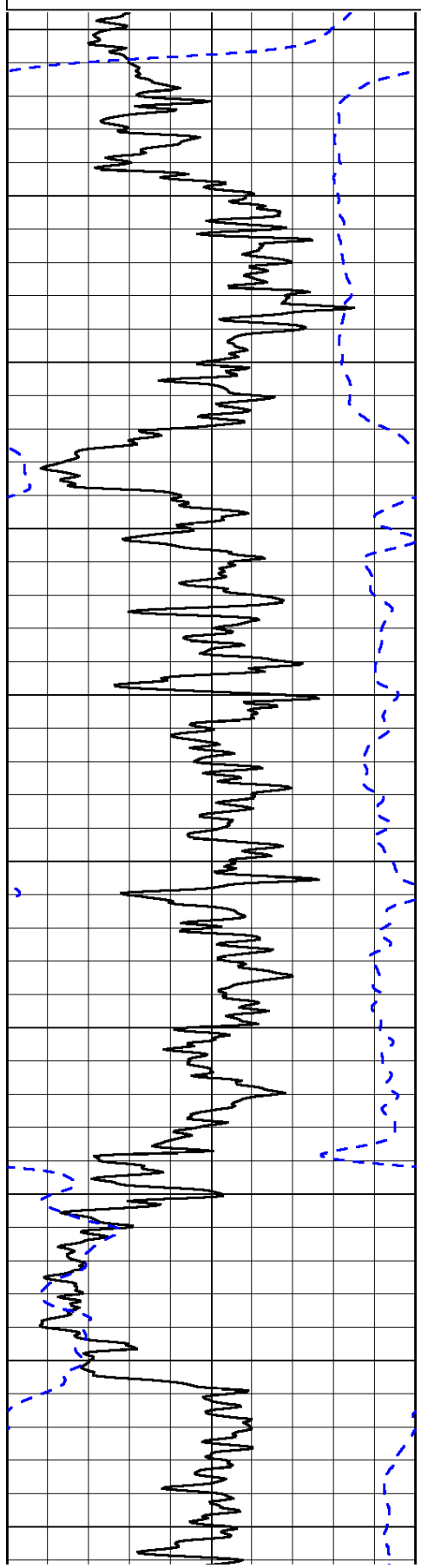
0	Gamma Ray	150
-200	SP (mV)	0

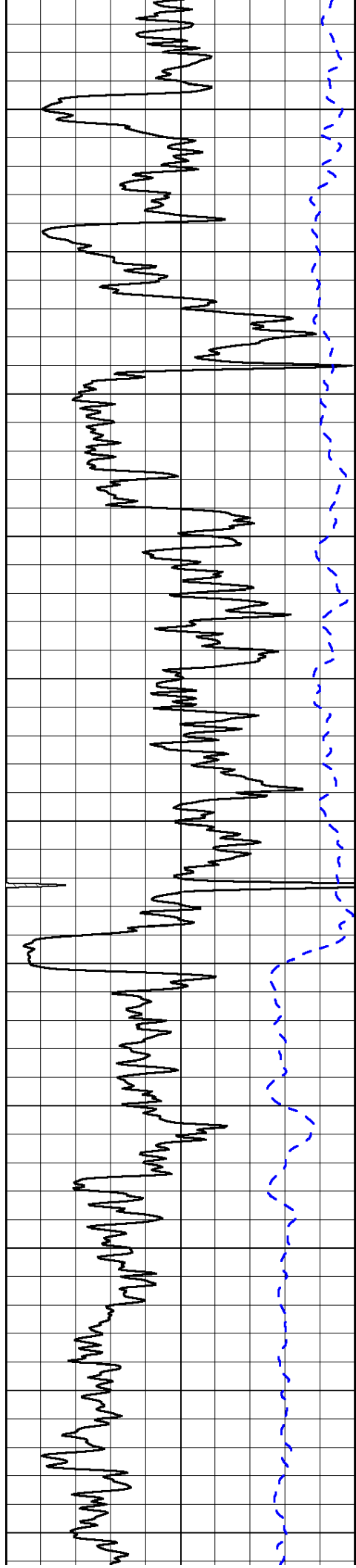
0	Shallow Resistivity	50
0	Deep Resistivity	50

LSPD

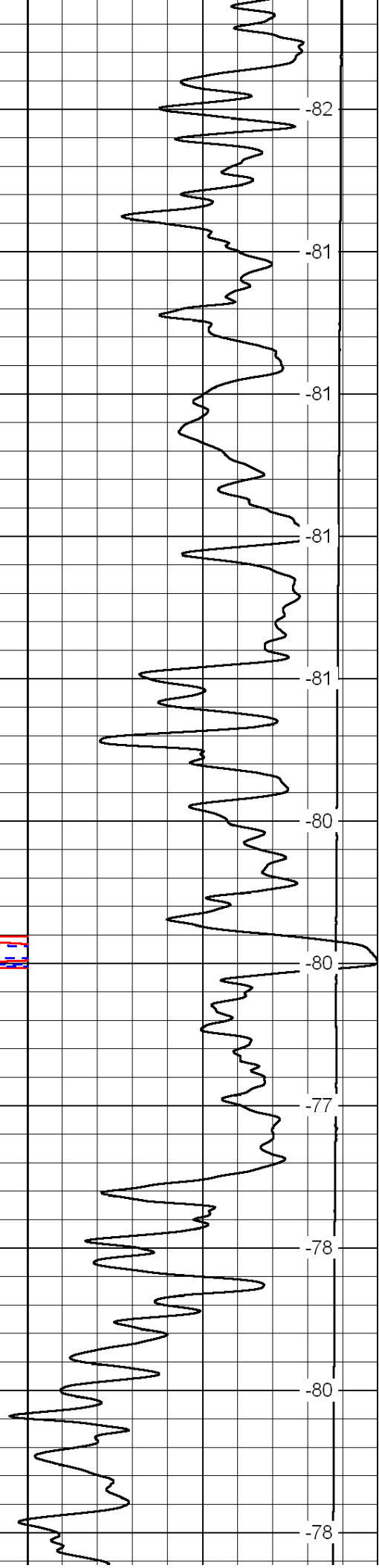
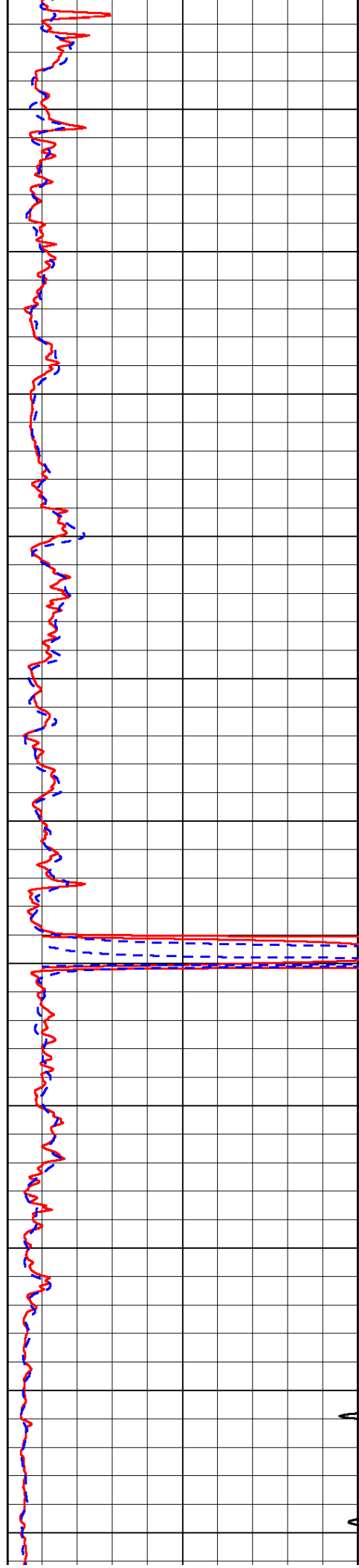
1000	Conductivity	0
15000	Line Tension	0

50	Shallow Resistivity	500
50	Deep Resistivity	500

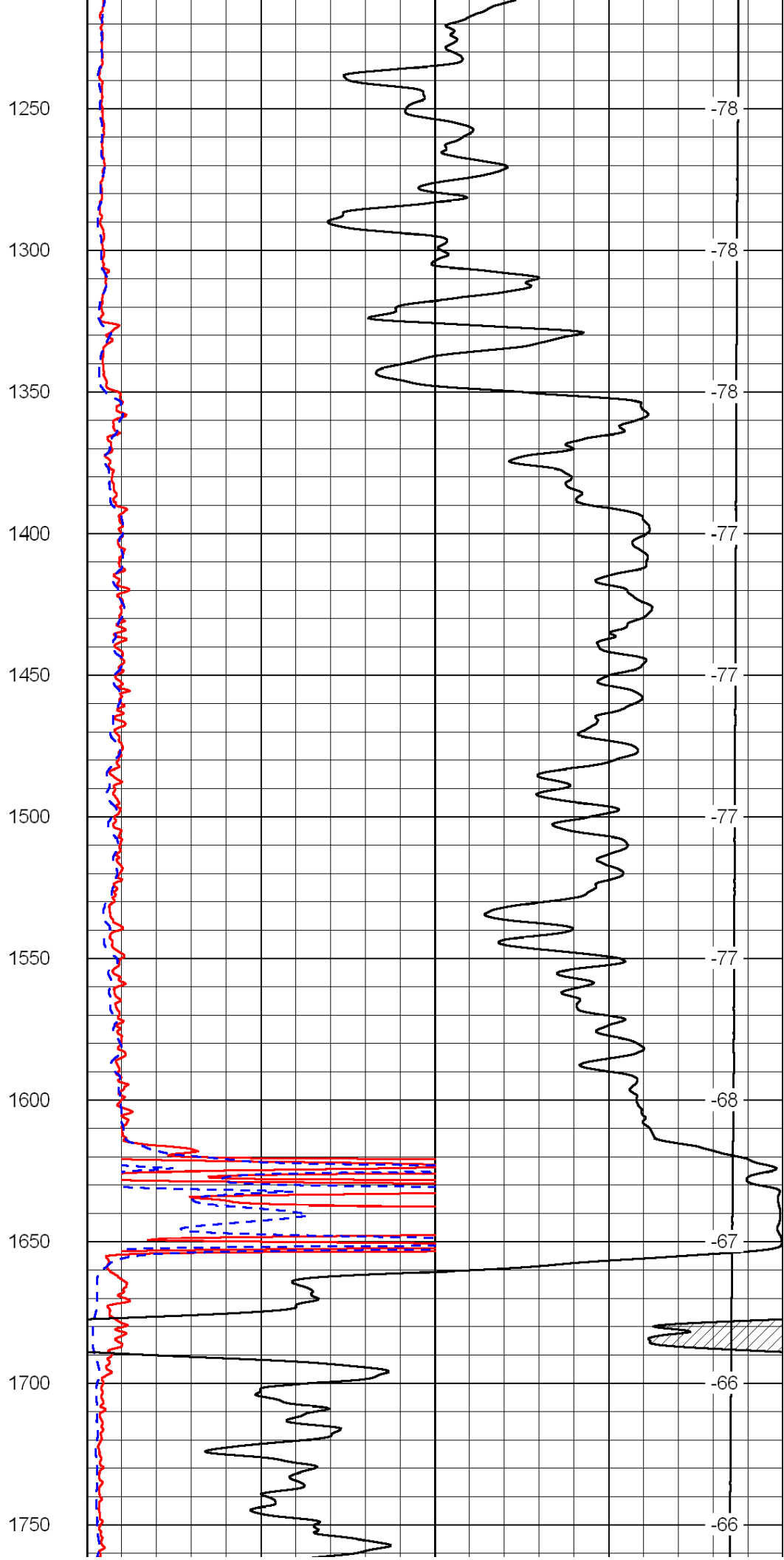
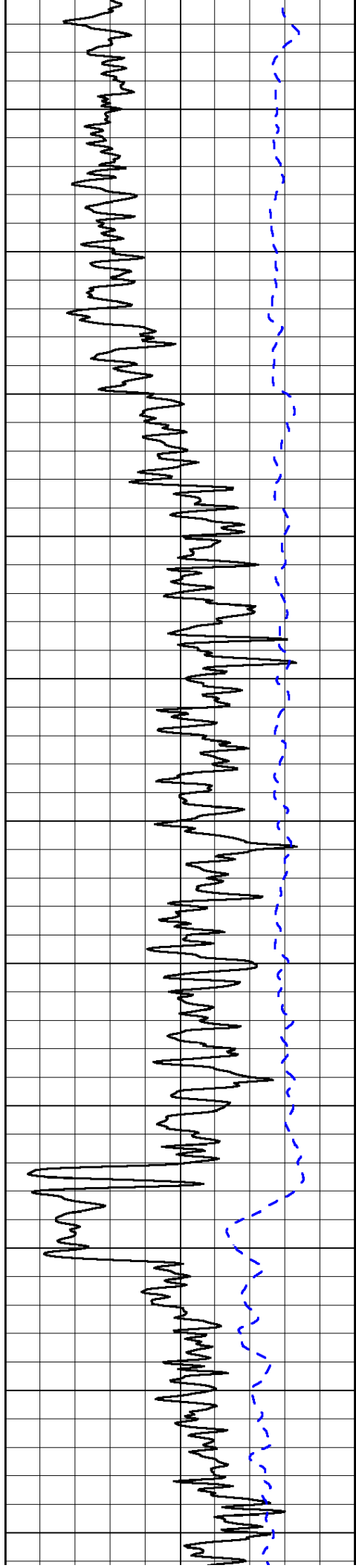


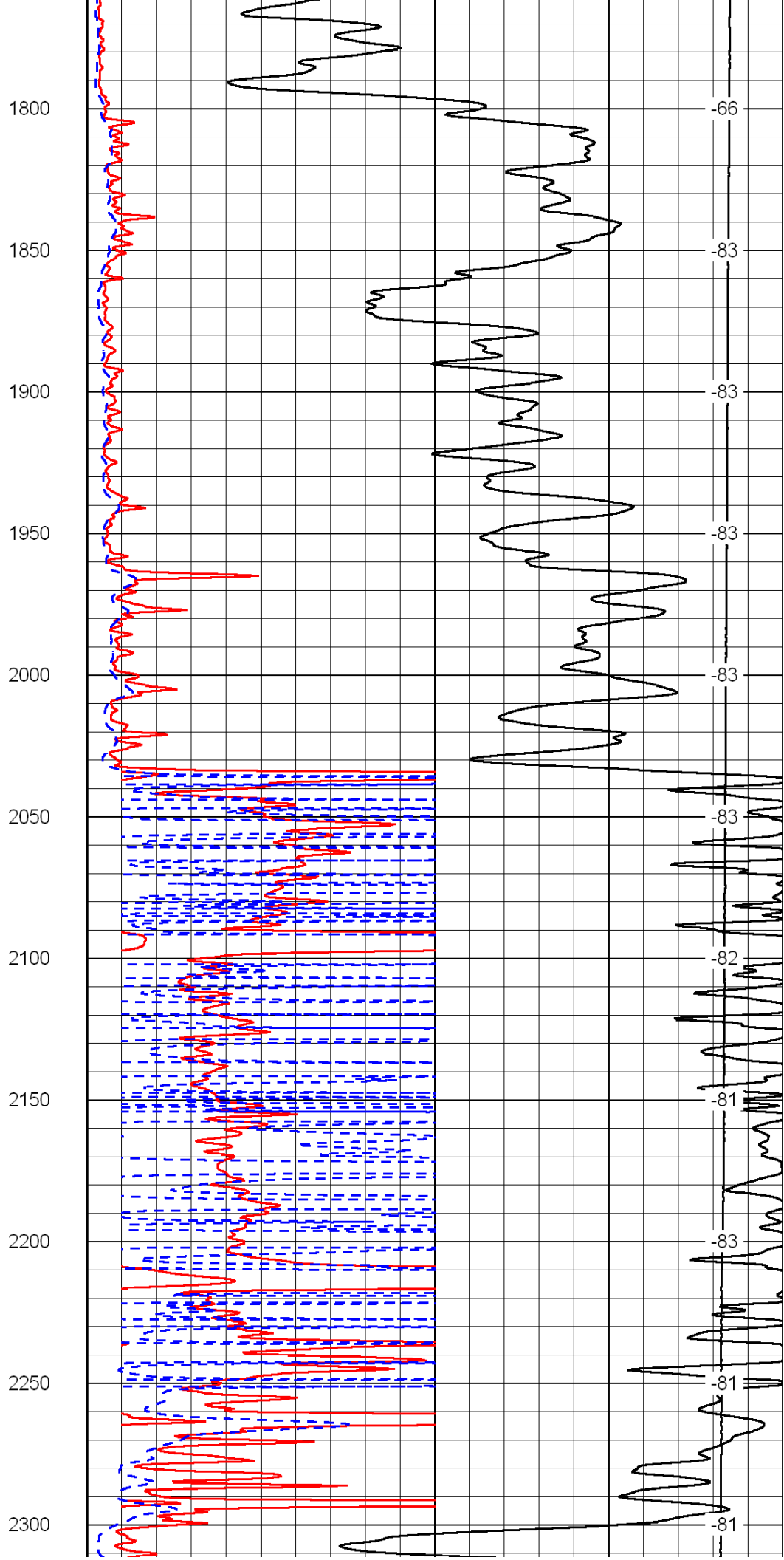
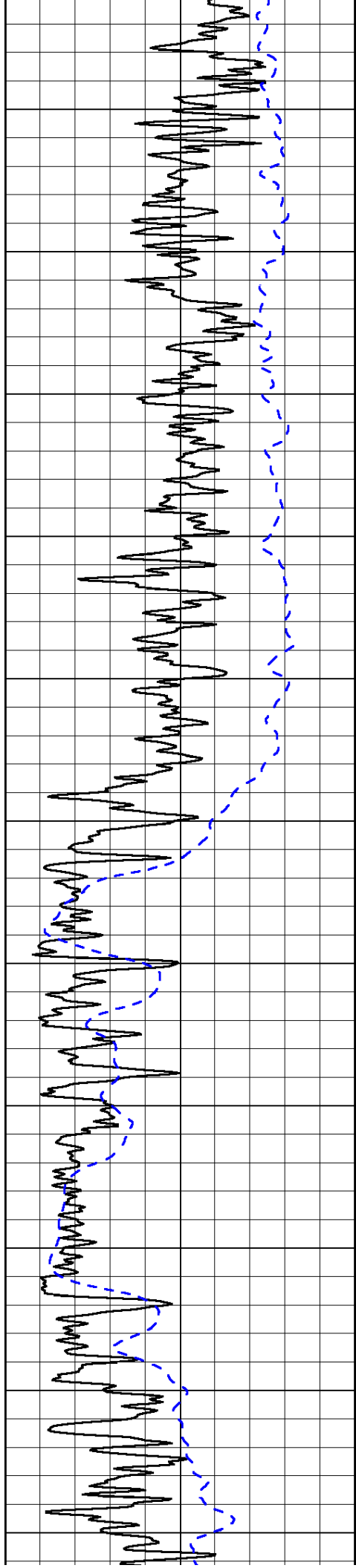


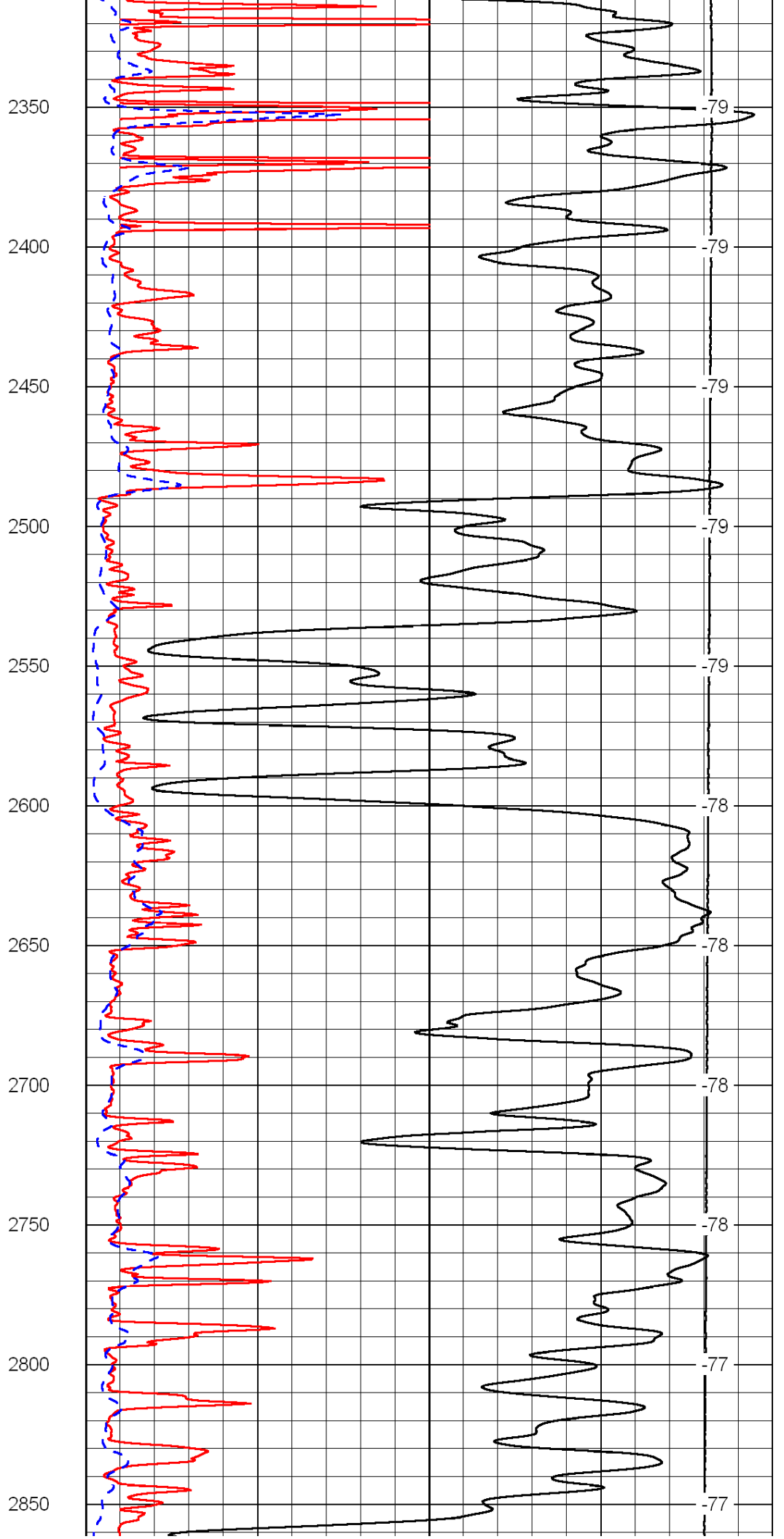
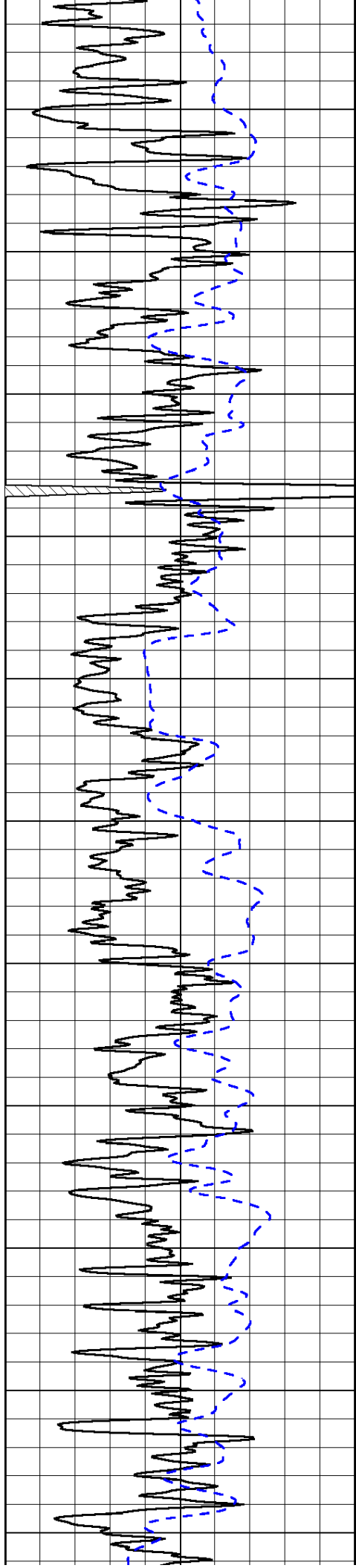
700
750
800
850
900
950
1000
1050
1100
1150
1200

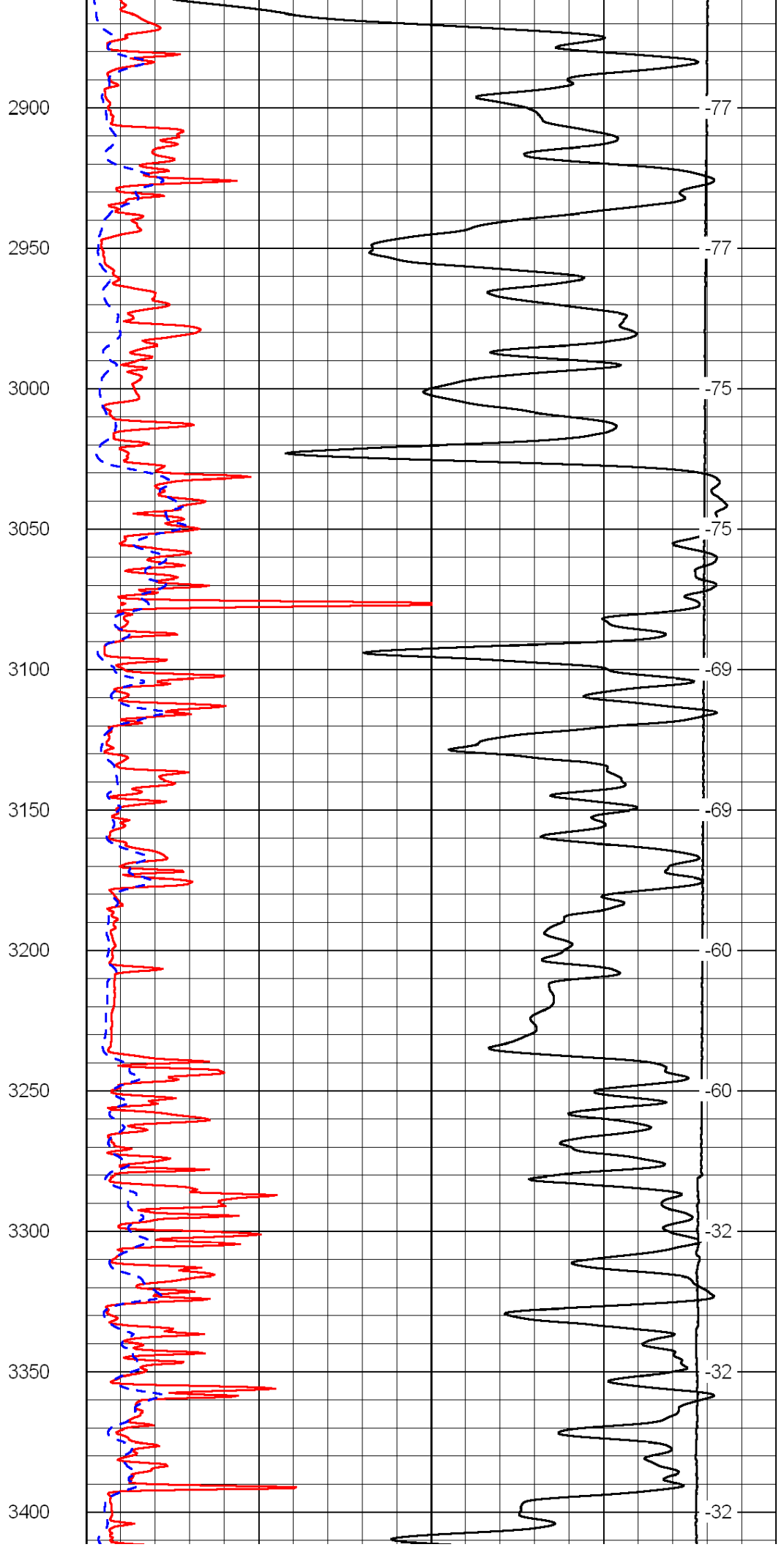
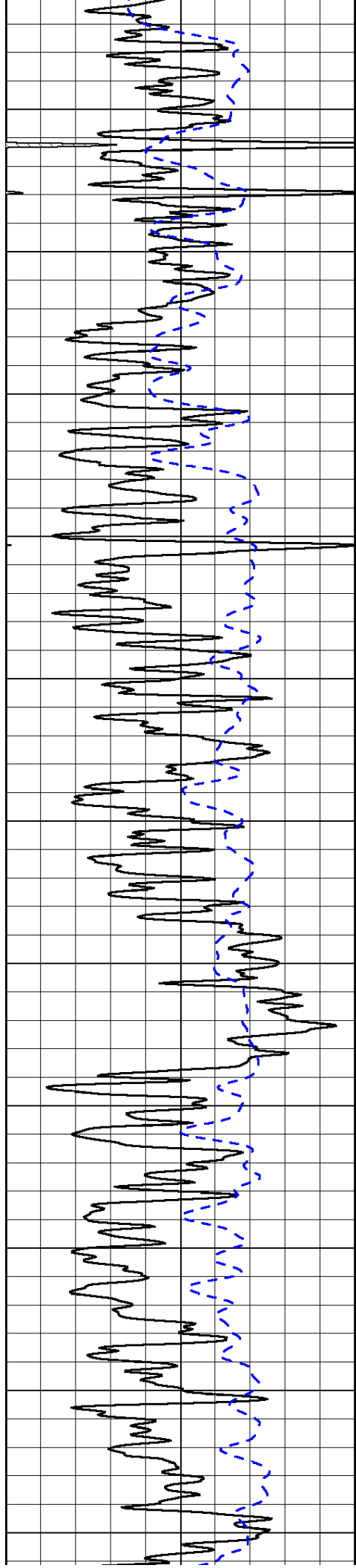


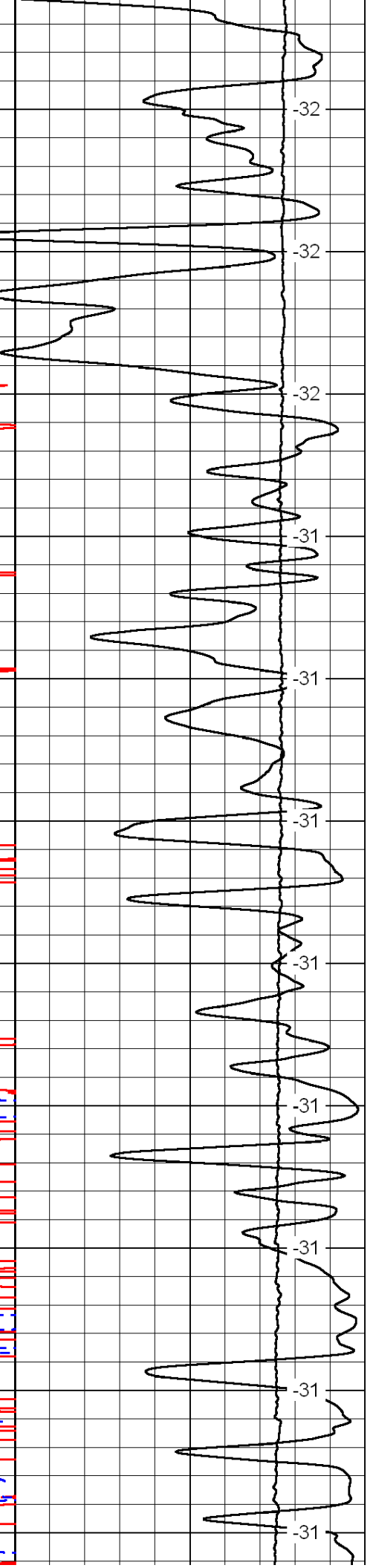
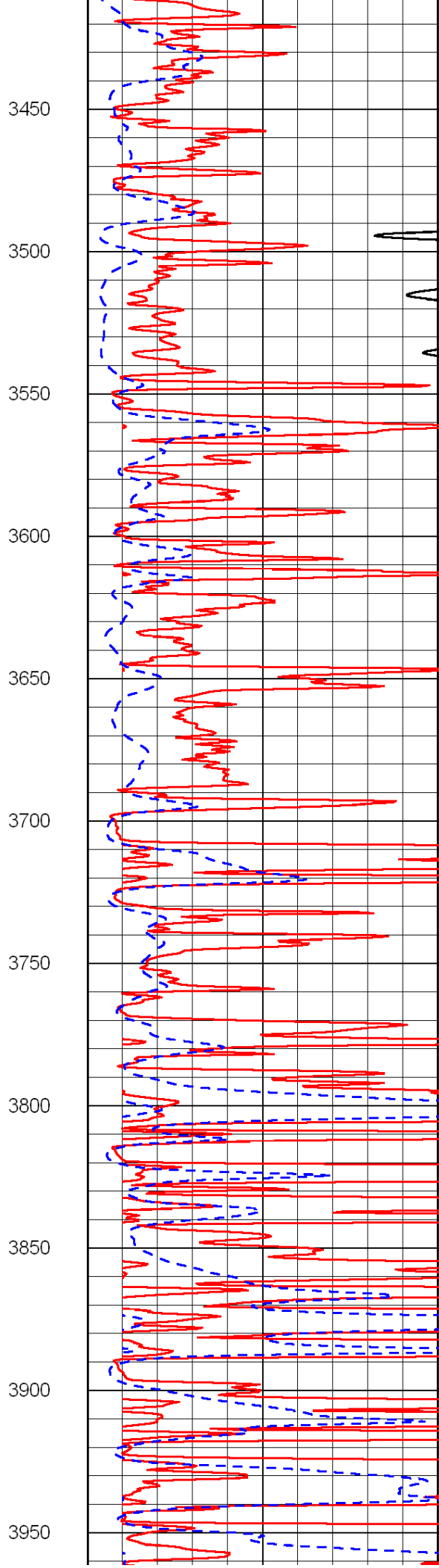
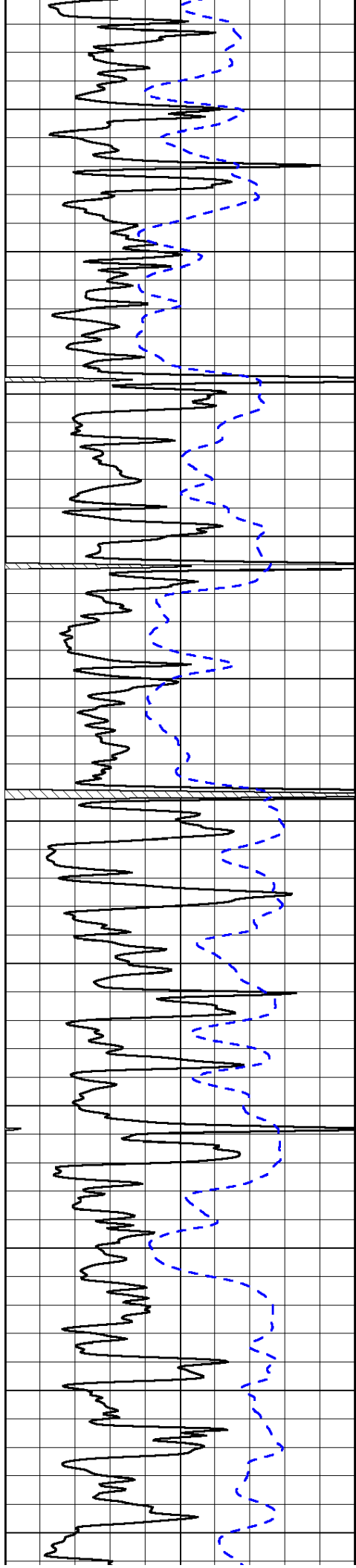
-82
-81
-81
-81
-81
-80
-80
-77
-78
-80
-78

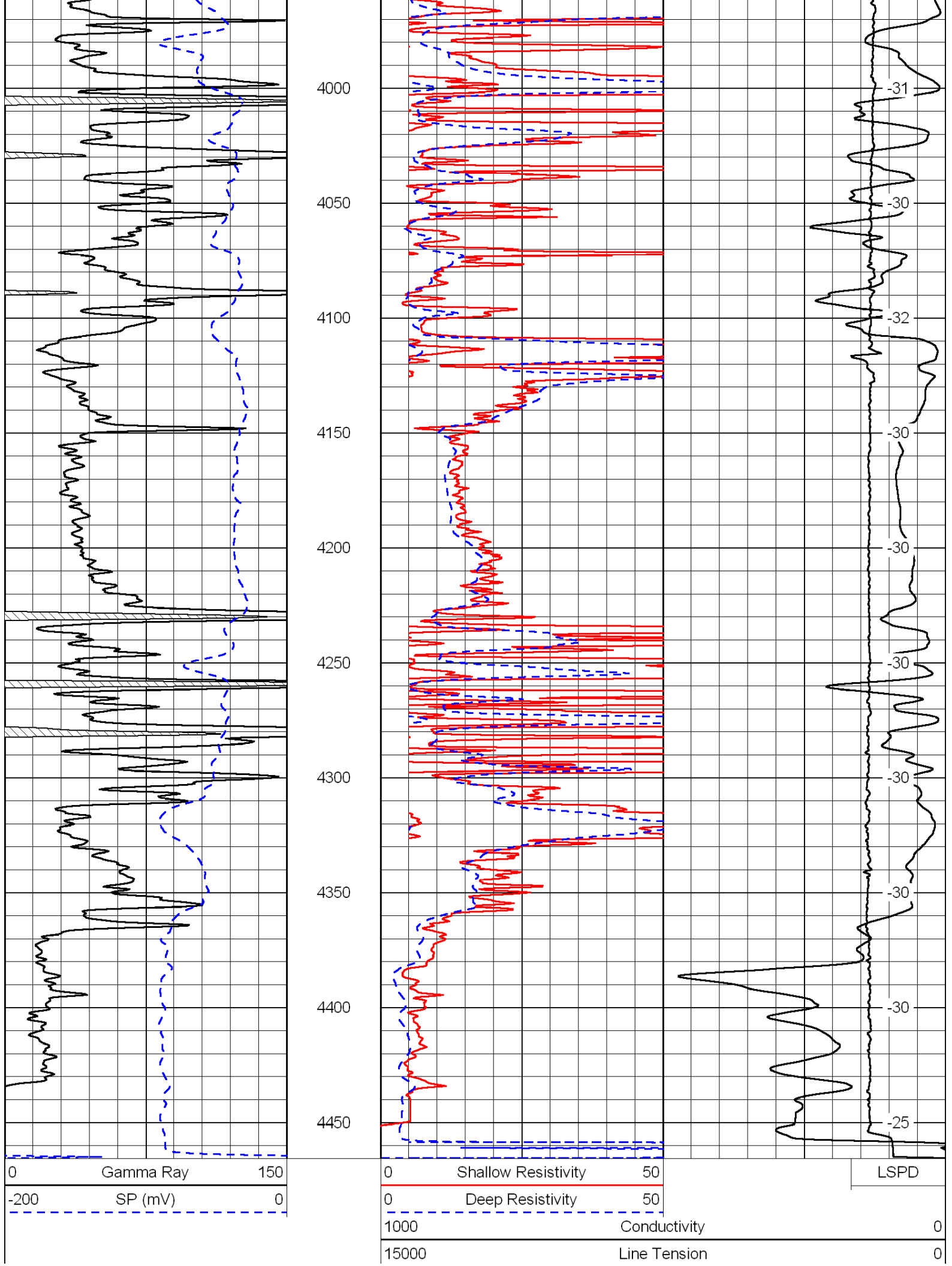












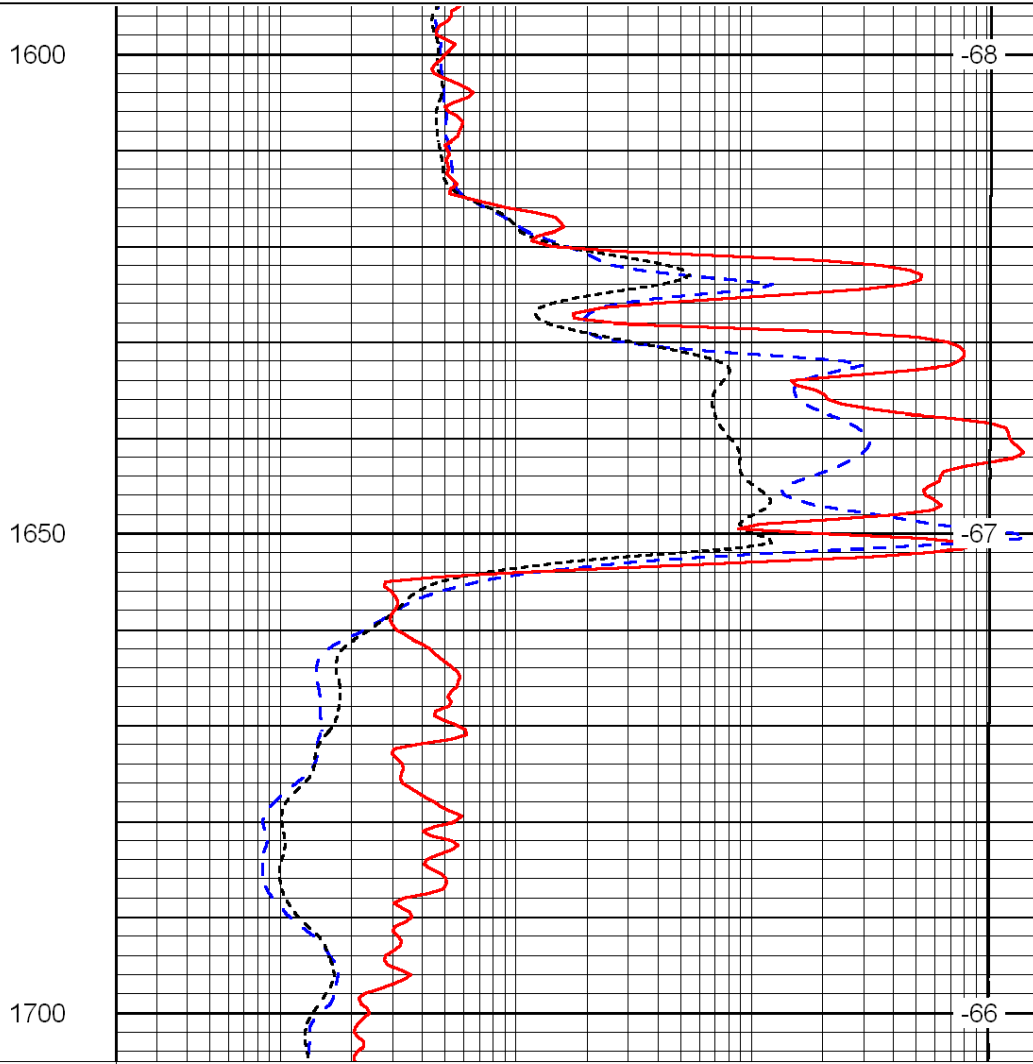
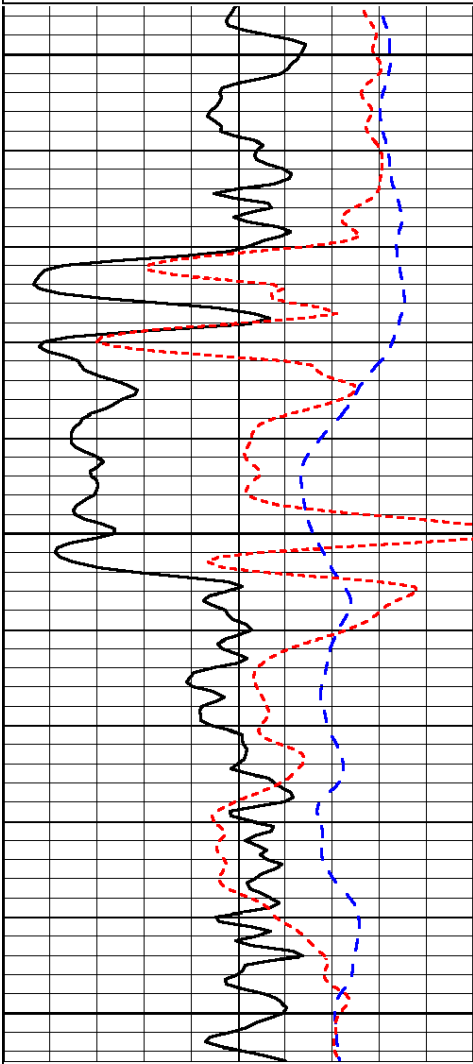
50	Shallow Resistivity	500
50	Deep Resistivity	500

Database File: c:\warrior\data\trans pacific_michaelis no. 2\transpac_michaelis_122811hd.db
 Dataset Pathname: DIL/tpstk
 Presentation Format: dil
 Dataset Creation: Thu Dec 29 22:29:49 2011
 Charted by: Depth in Feet scaled 1:240

0	Gamma Ray	150
-200	SP (mV)	0
-160	Rxo / Rt	40

0.2	Deep Resistivity	2000
0.2	Medium Resistivity	2000
0.2	Shallow Resistivity	2000
15000	Line Tension	0

LSPD



0	Gamma Ray	150
-200	SP (mV)	0
-160	Rxo / Rt	40

0.2	Deep Resistivity	2000
0.2	Medium Resistivity	2000
0.2	Shallow Resistivity	2000
15000	Line Tension	0

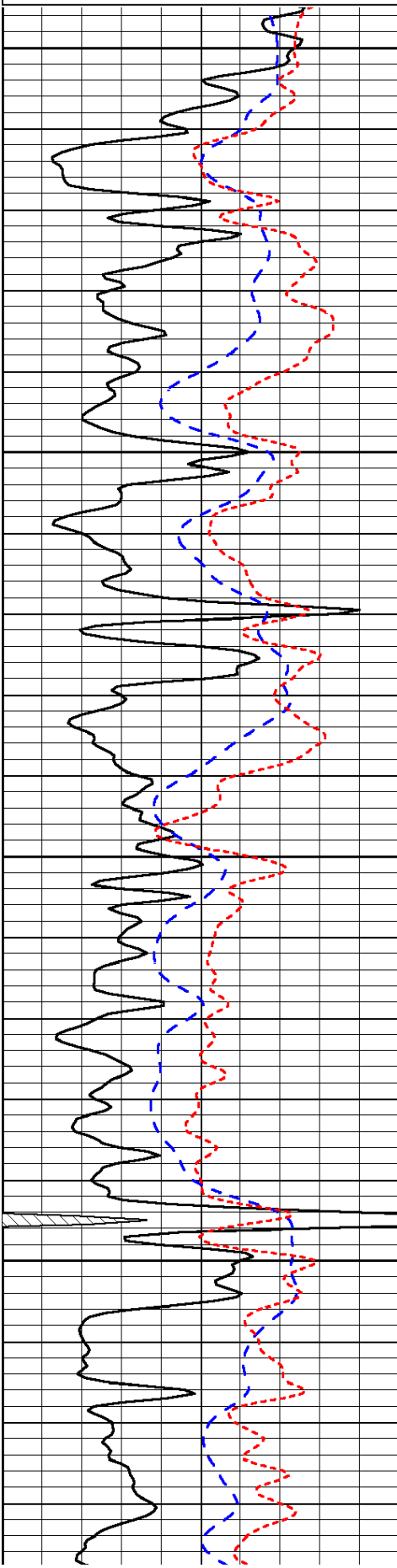
LSPD

Database File: c:\warrior\data\trans pacific_michaelis no. 2\transpac_michaelis_122811hd.db
 Dataset Pathname: DIL/tpstk
 Presentation Format: dil
 Dataset Creation: Thu Dec 29 22:29:49 2011
 Charted by: Depth in Feet scaled 1:240

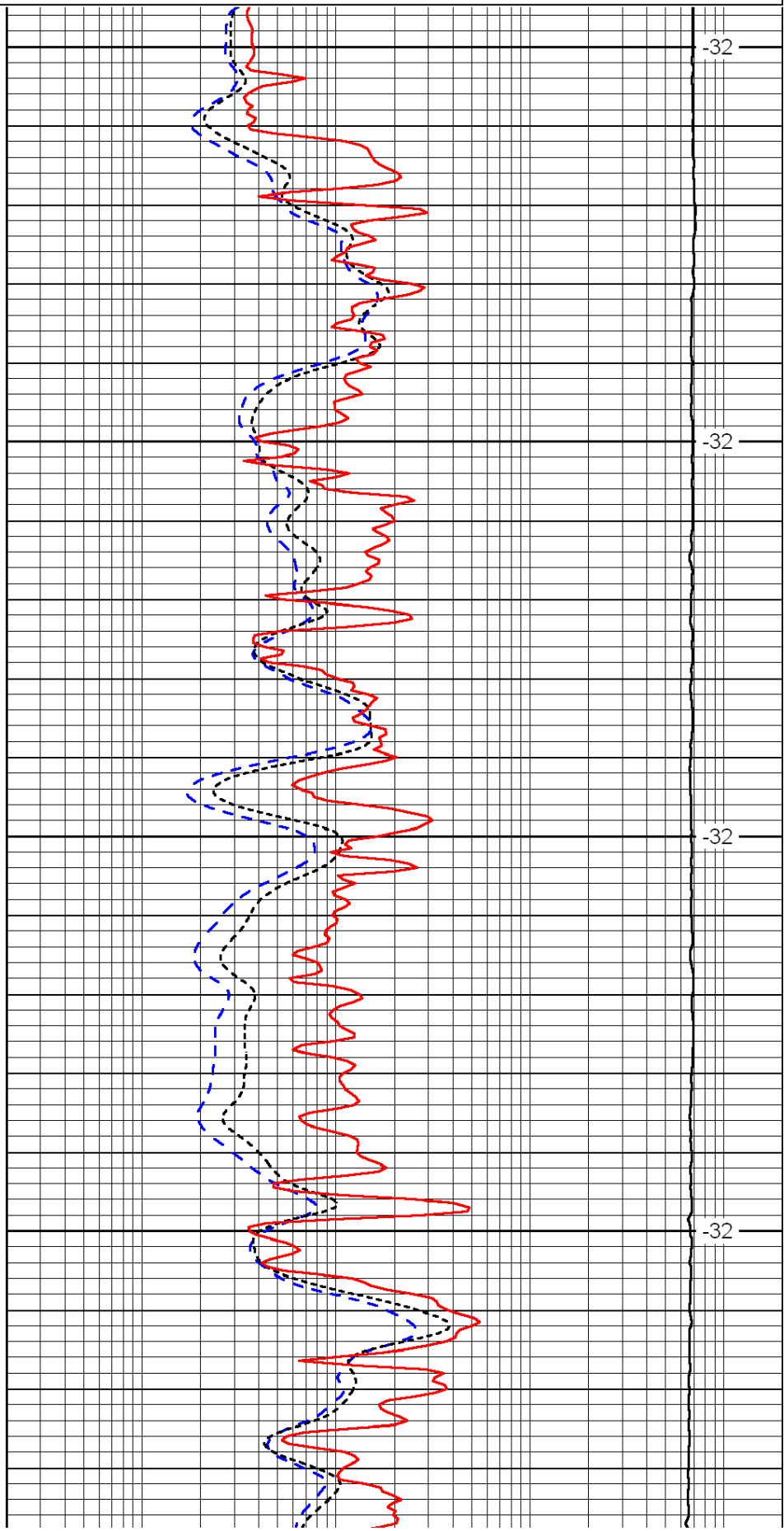
0	Gamma Ray	150
-200	SP (mV)	0
-160	Rxo / Rt	40

0.2	Deep Resistivity	2000
0.2	Medium Resistivity	2000
0.2	Shallow Resistivity	2000
15000	Line Tension	0

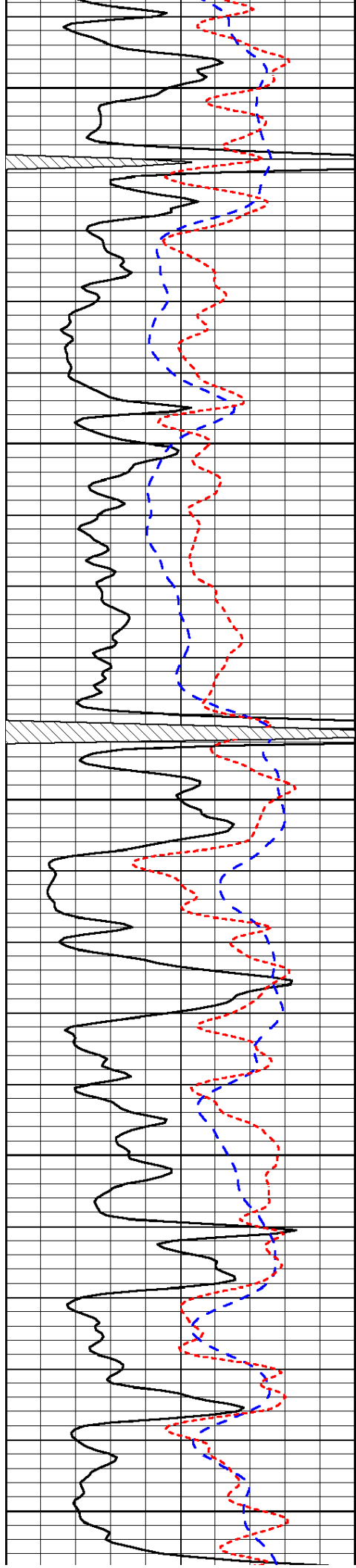
LSPD



3400
3450
3500
3550



-32
-32
-32
-32



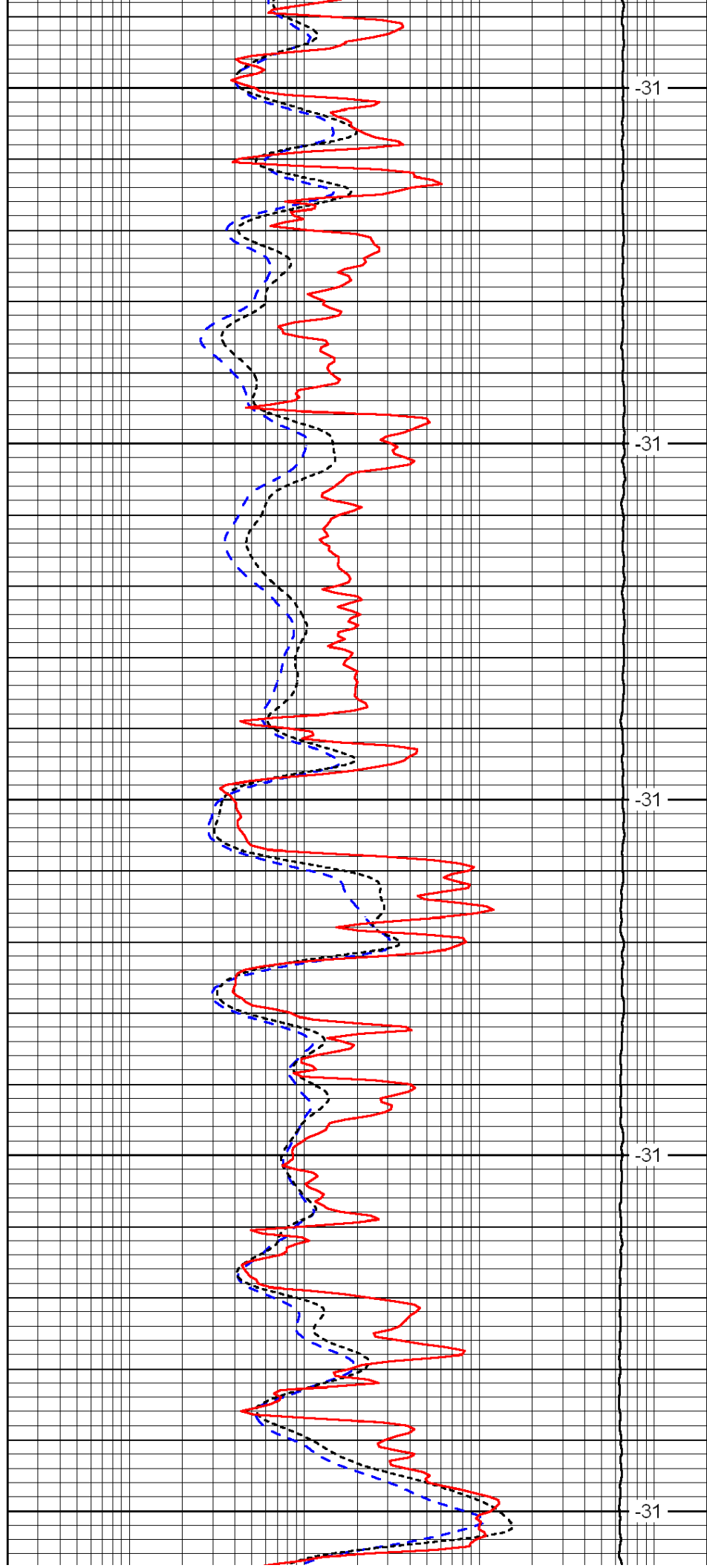
3600

3650

3700

3750

3800



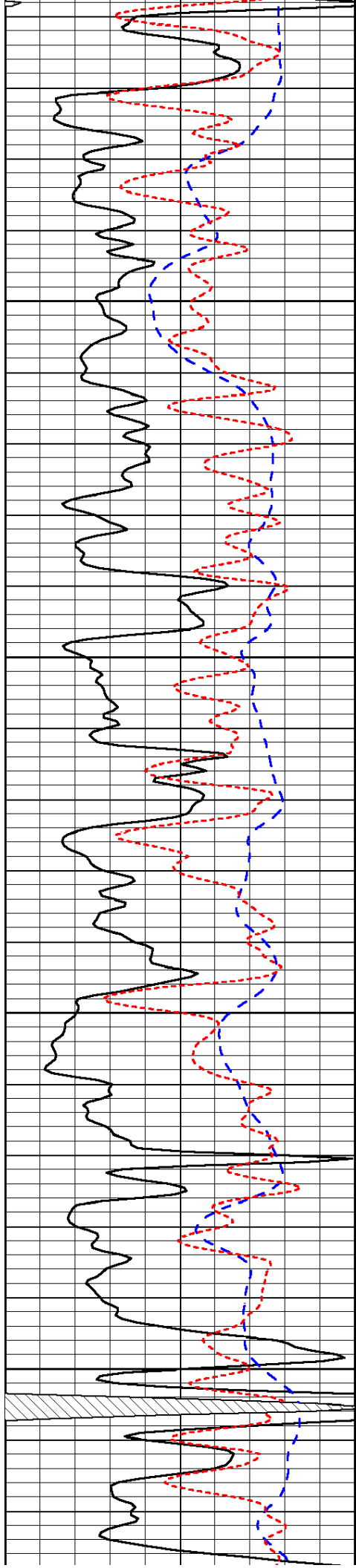
-31

-31

-31

-31

-31

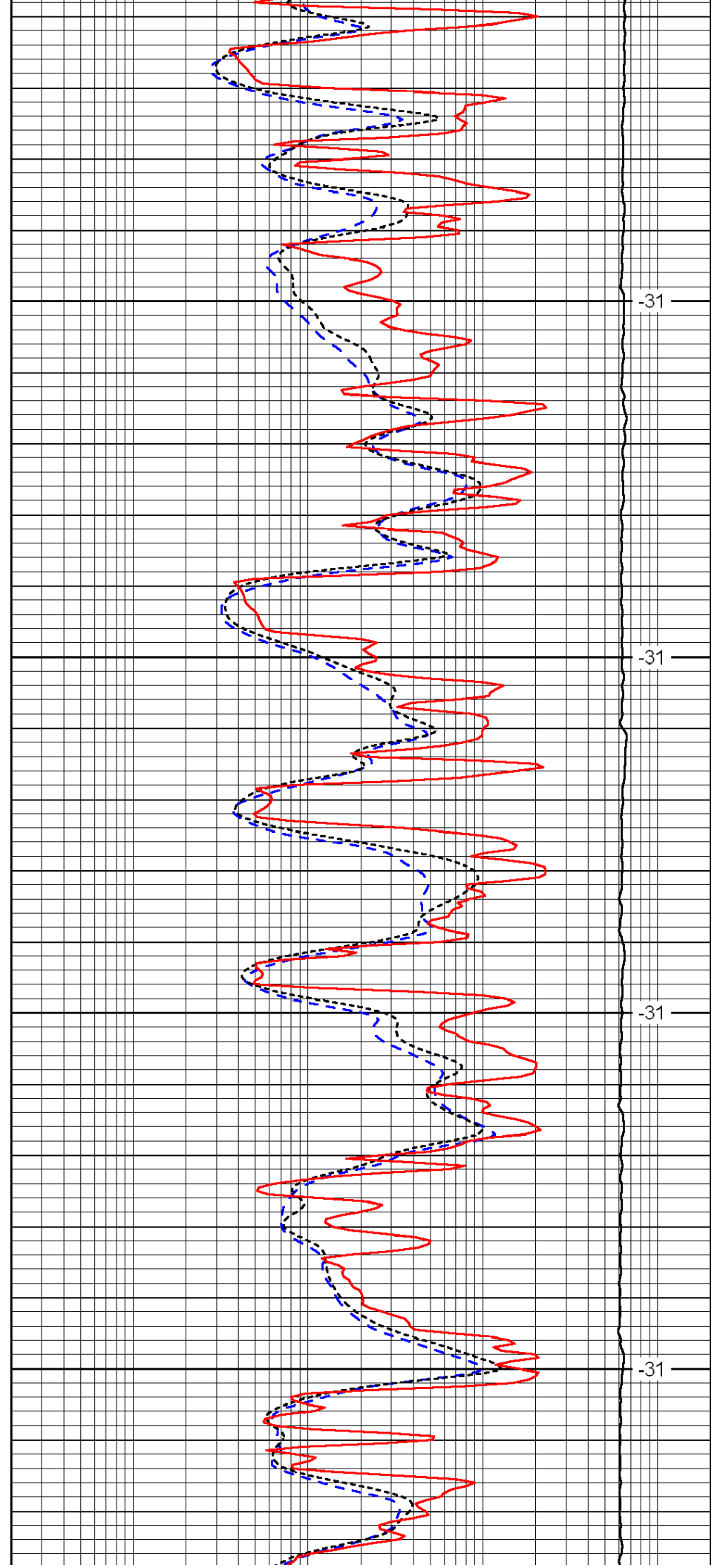


3850

3900

3950

4000

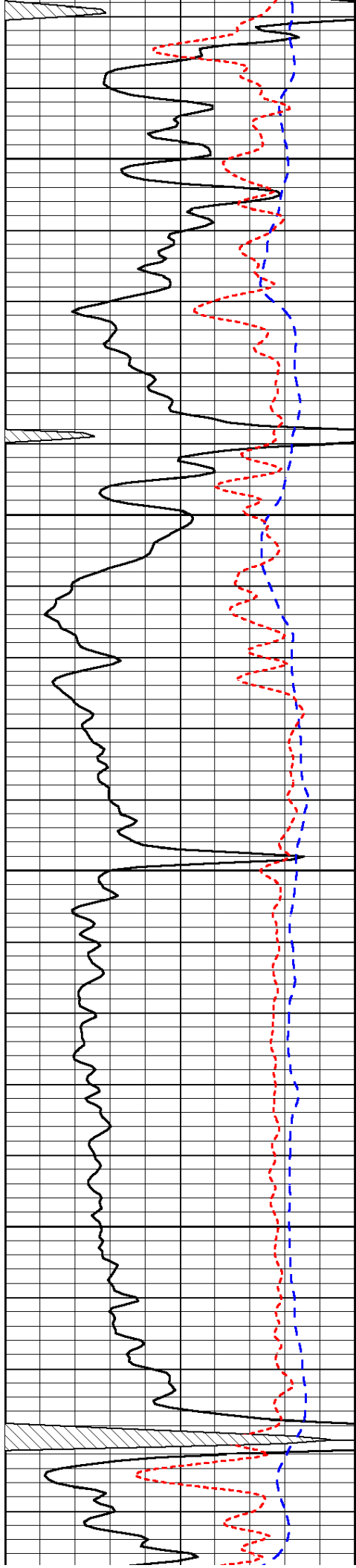


-31

-31

-31

-31

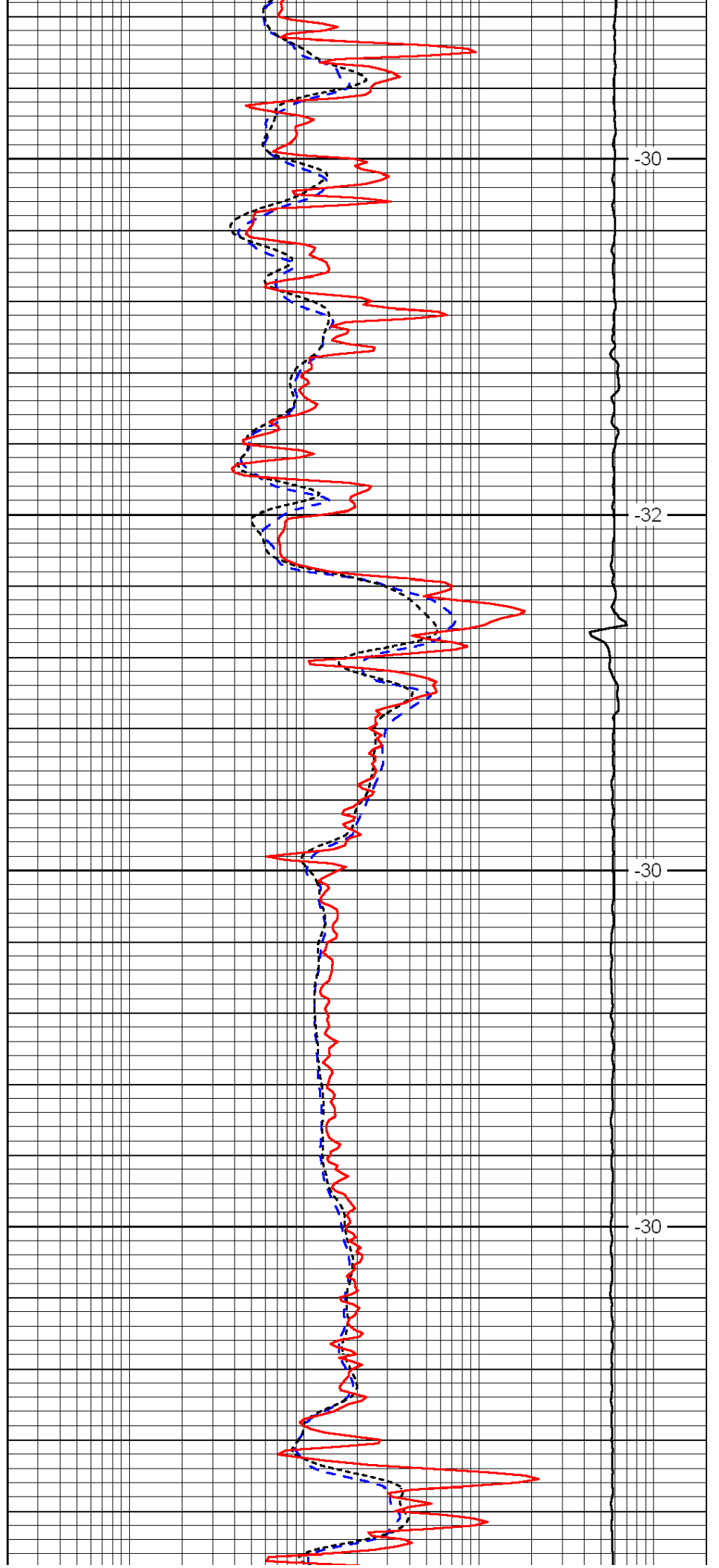


4050

4100

4150

4200

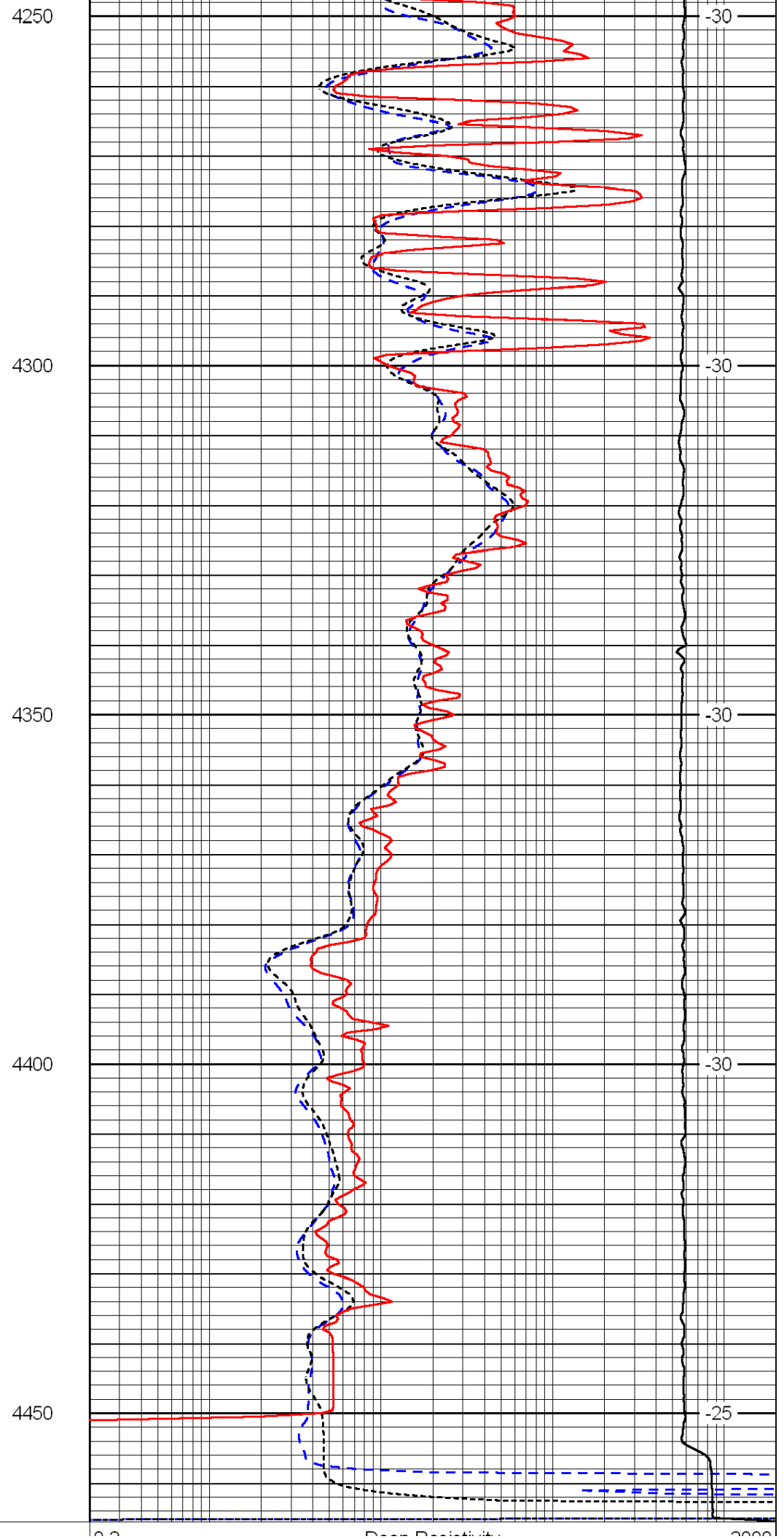
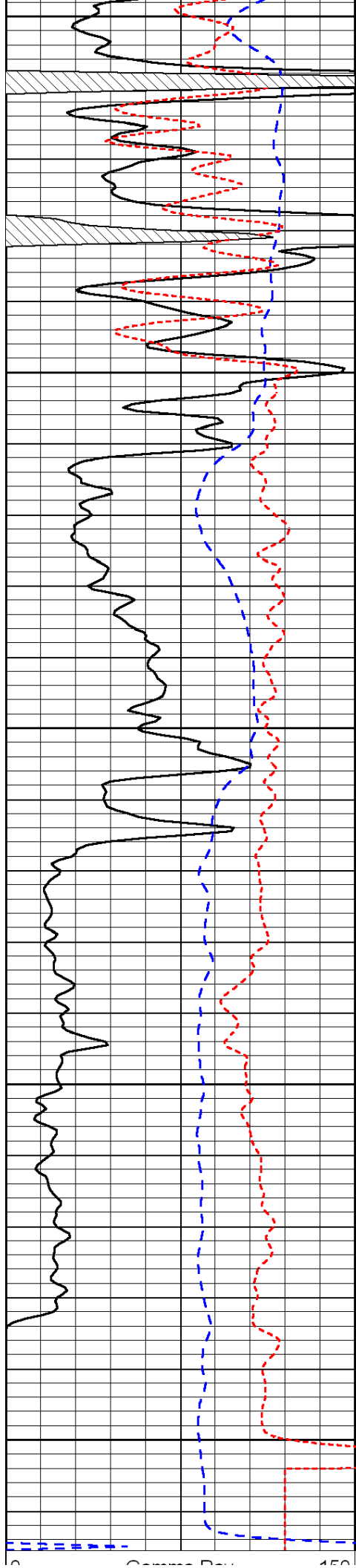


-30

-32

-30

-30



0	Gamma Ray	150
-200	SP (mV)	0
-160	Rxo / Rt	40

0.2	Deep Resistivity	2000
0.2	Medium Resistivity	2000
0.2	Shallow Resistivity	2000
15000	Line Tension	0
		LSPD