



Radiation Guard  
Log

**DIGITAL LOG** (785) 625-3858

API No. 15-051-26,223-00-00

Company Tomlinson Operating, LLC  
 Well Honas Farms No.2  
 Field Wildcat  
 County Ellis State Kansas

Location 457' FNL & 1233' FEL  
 Sec: 22 Twp: 12S Rge: 19W

Permanant Datum Ground Level Elevation 2237  
 Log Measured From Kelly Bushing 7 Ft. Above Perm. Datum  
 Drilling Measured From Kelly Bushing

Other Services  
 MEL  
 Elevation  
 K.B. 2244  
 D.F. Datum  
 G.L. 2237

Date	12/18/2011
Run Number	One
Depth Driller	3920
Depth Logger	3924
Bottom Logged Interval	3923
Top Log Interval	250
Casing Driller	8.625 @ 274
Casing Logger	273
Bit Size	7.875
Type Fluid in Hole	Chemical
Salinity.ppm CL	7.200
Density / Viscosity	9.1 49
pH / Fluid Loss	10.5 6.8
Source of Sample	Flowline
Rm @ Meas. Temp	.18 @ 60
Rmf @ Meas. Temp	.14 @ 60
Rmc @ Meas. Temp	.24 @ 60
Source of Rmf / Rmc	Charts
Rm @ BHT	.09 @ 115
Operating Rig Time	3 1/2 Hours
Max Rec. Temp. F	115
Equipment Number	17
Location	Hays
Recorded By	C. Desaire
Witnessed By	Bob O'Dell

<<< Fold Here >>>

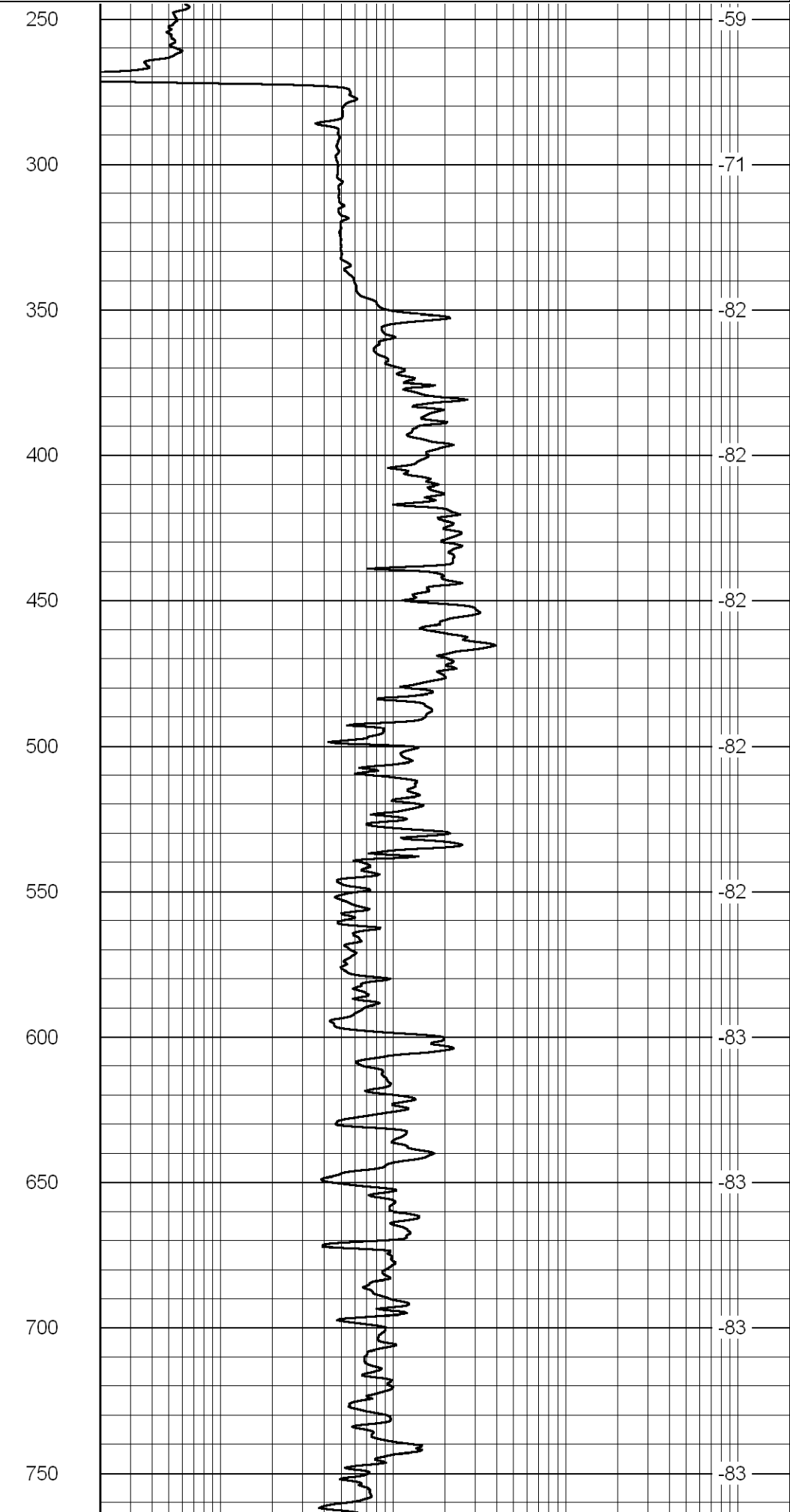
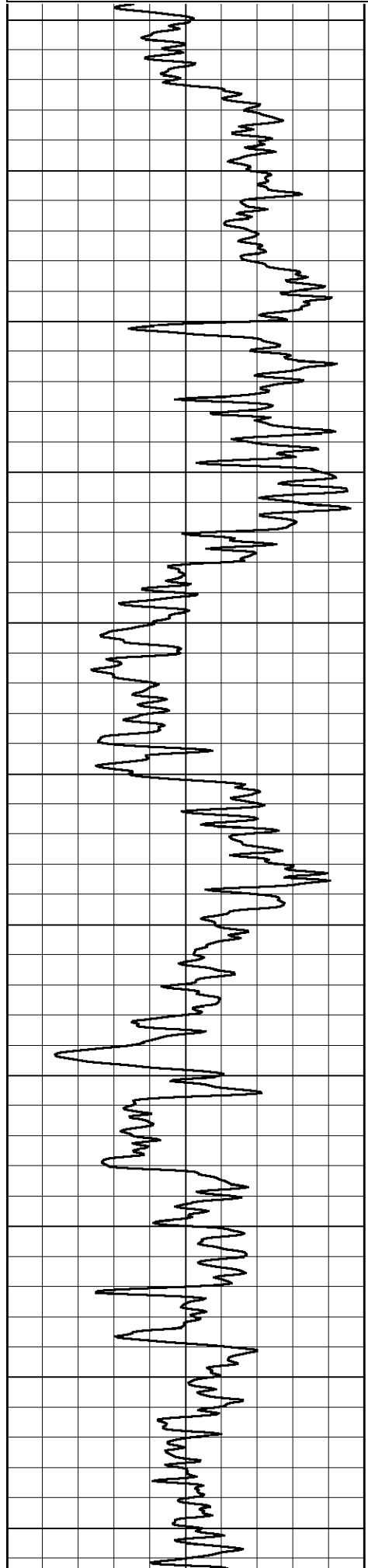
All interpretations are opinions based on inferences from electrical or other measurements and we cannot and do not guarantee the accuracy or correctness of any interpretation, and we shall not, except in the case of gross or willful negligence on our part, be liable or responsible for any loss, costs, damages, or expenses incurred or sustained by anyone resulting from any interpretation made by any of our officers, agents or employees. These interpretations are also subject to our general terms and conditions set out in our current Price Schedule.

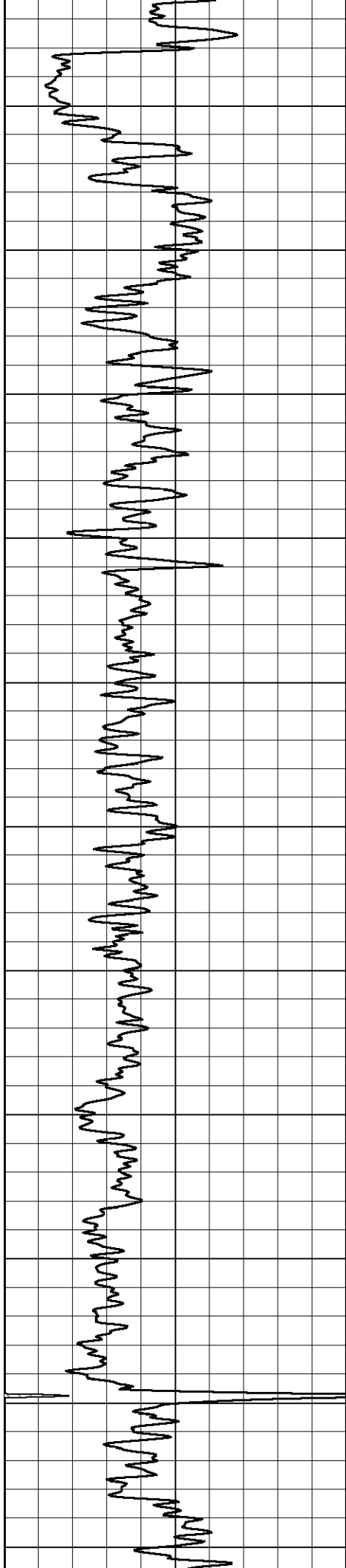
Comments

Thank you for using Log-Tech, Inc.  
 (785) 625-3858  
 Hays KS,  
 N on Hwy 183 to Buckeye Rd,  
 5 1/4 W, S Into

Database File: tomhd.db  
 Dataset Pathname: rag/tomrag  
 Presentation Format: rag2in  
 Dataset Creation: Sun Dec 18 16:20:13 2011  
 Charted by: Depth in Feet scaled 1:600

LSPD





800

850

900

950

1000

1050

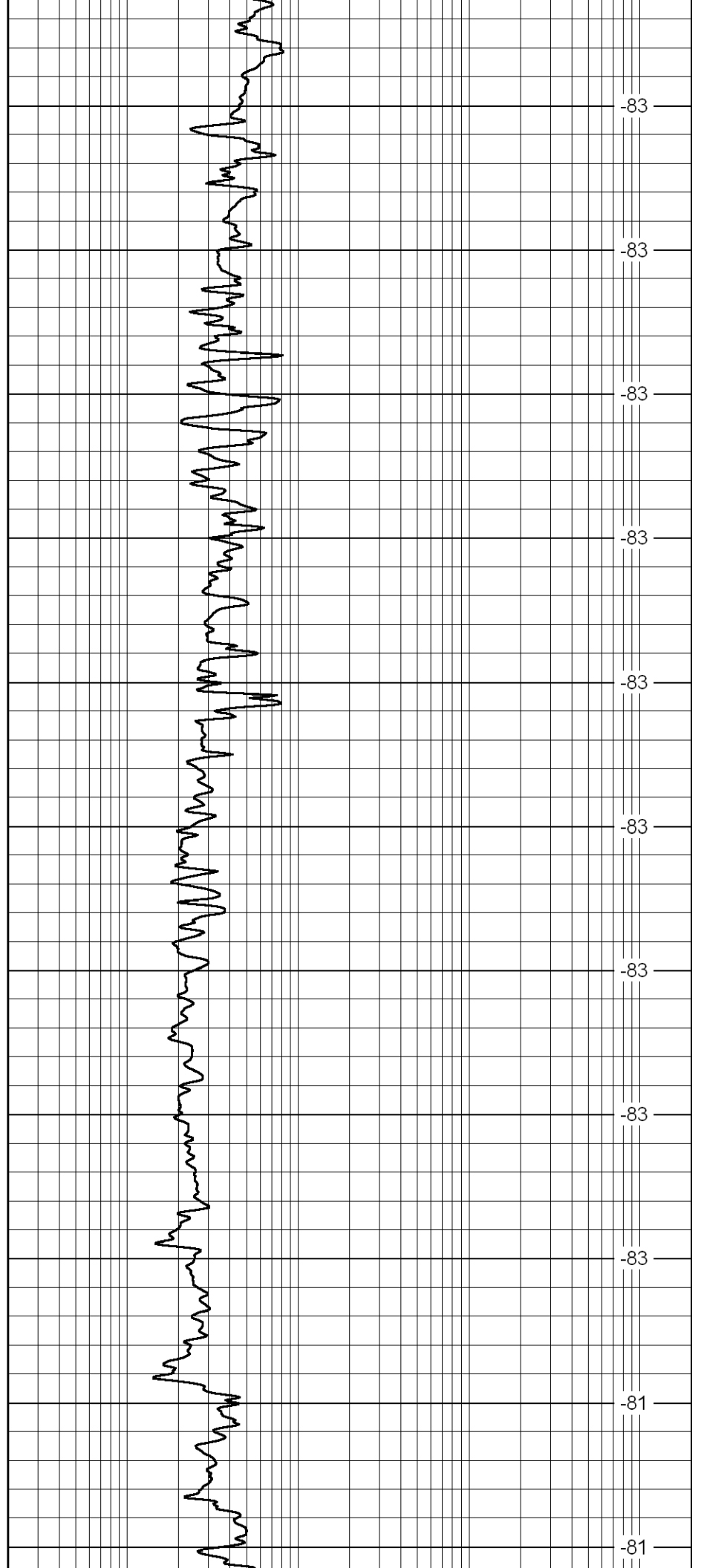
1100

1150

1200

1250

1300



-83

-83

-83

-83

-83

-83

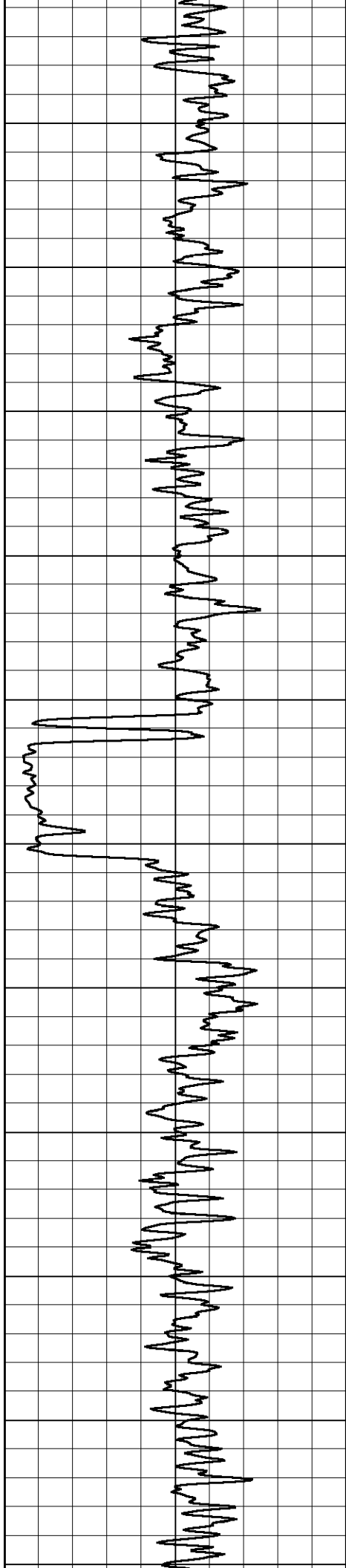
-83

-83

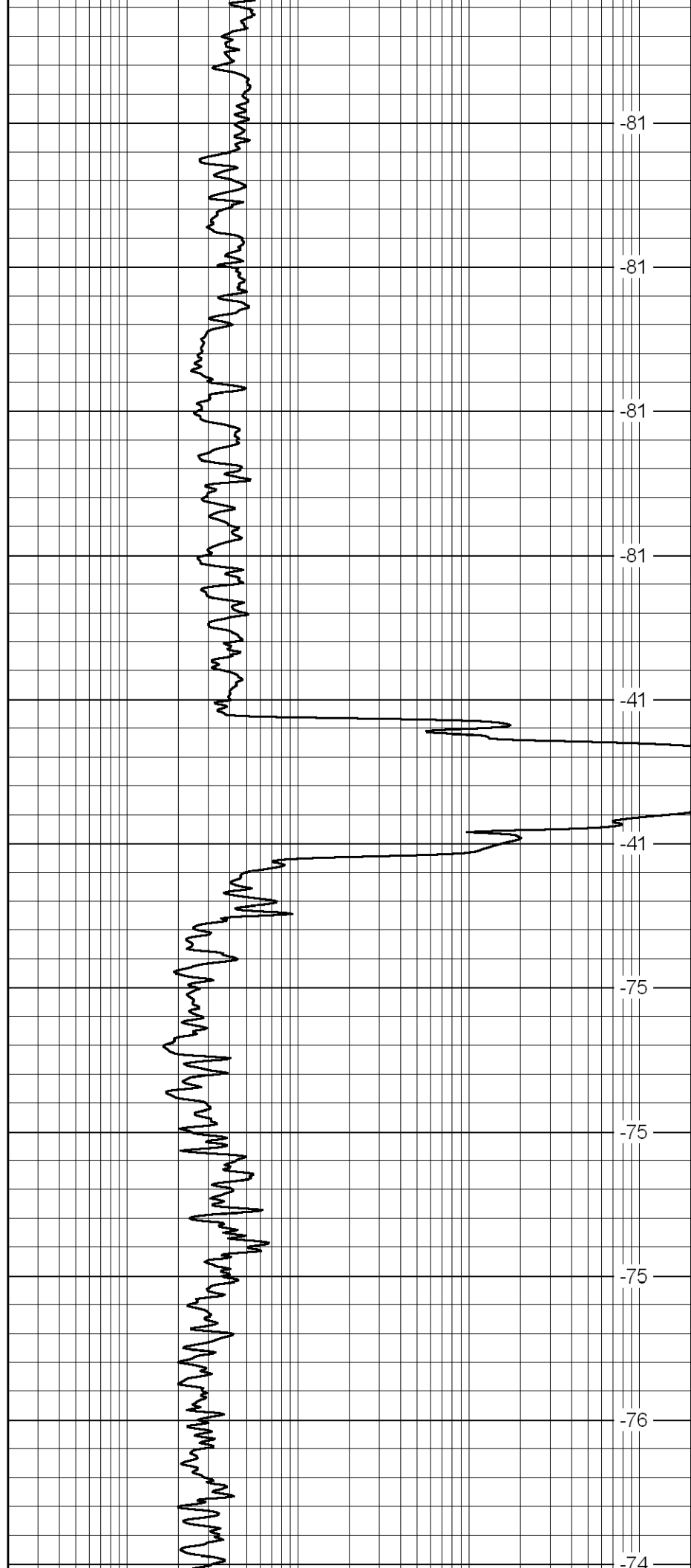
-83

-81

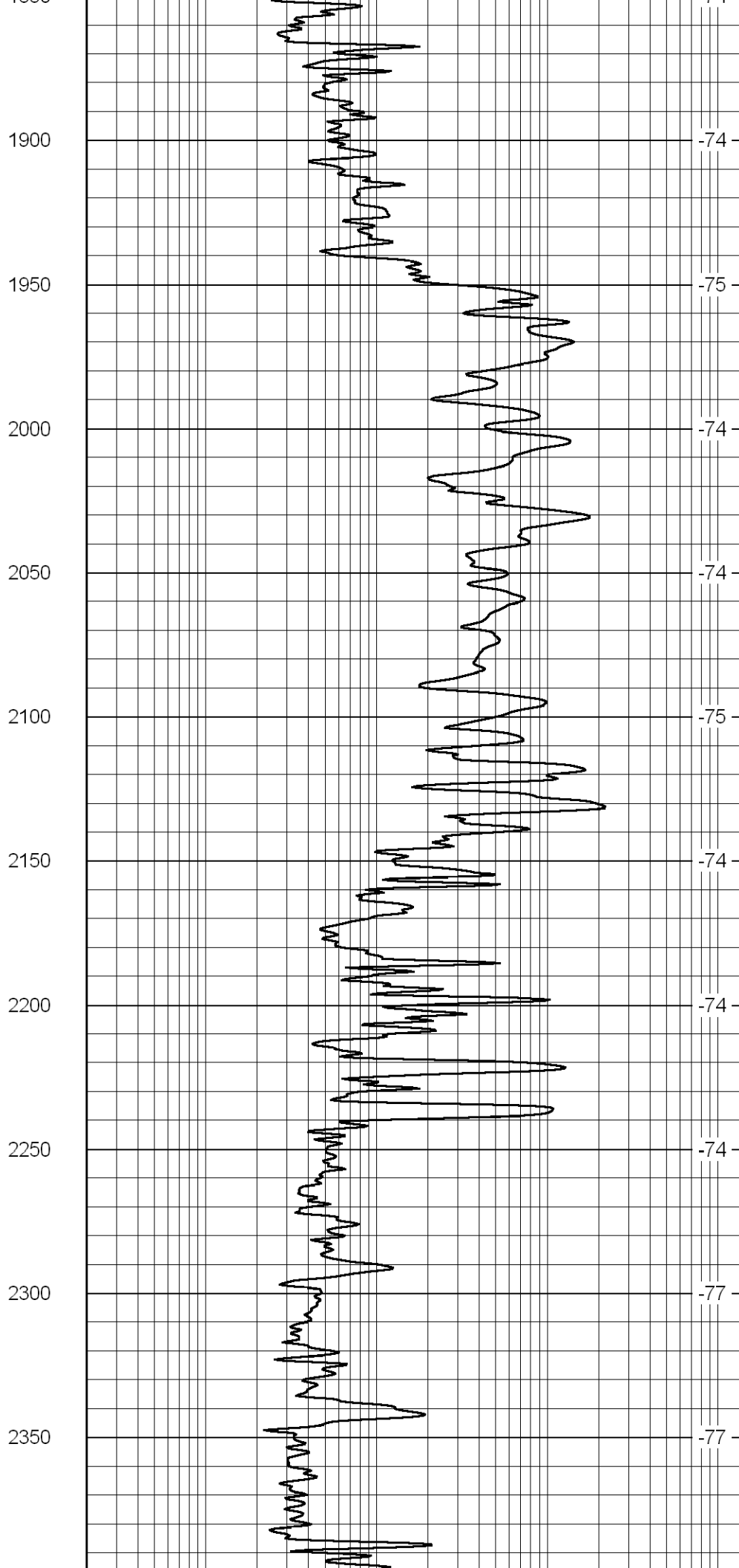
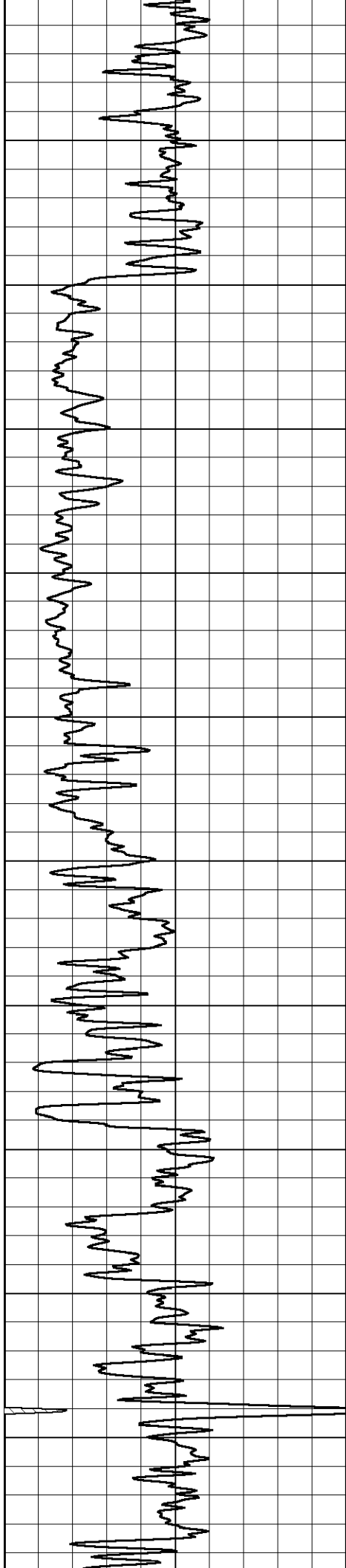
-81

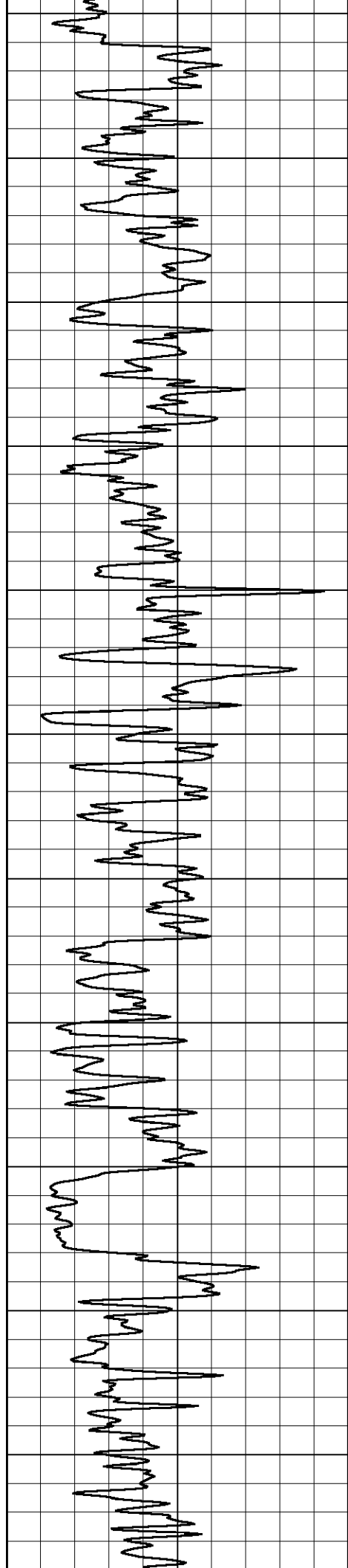


1350  
1400  
1450  
1500  
1550  
1600  
1650  
1700  
1750  
1800  
1850

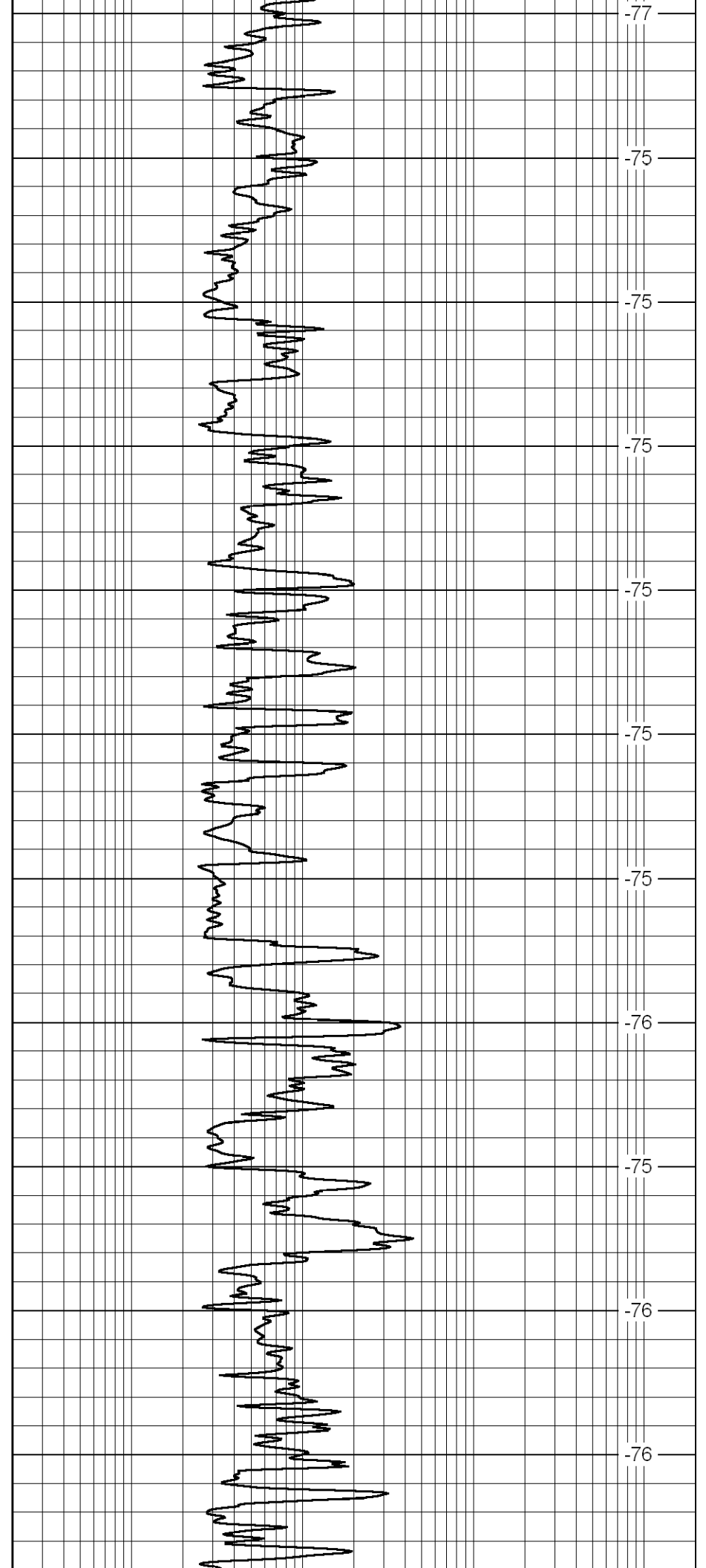


-81  
-81  
-81  
-81  
-41  
-41  
-75  
-75  
-75  
-76  
-74

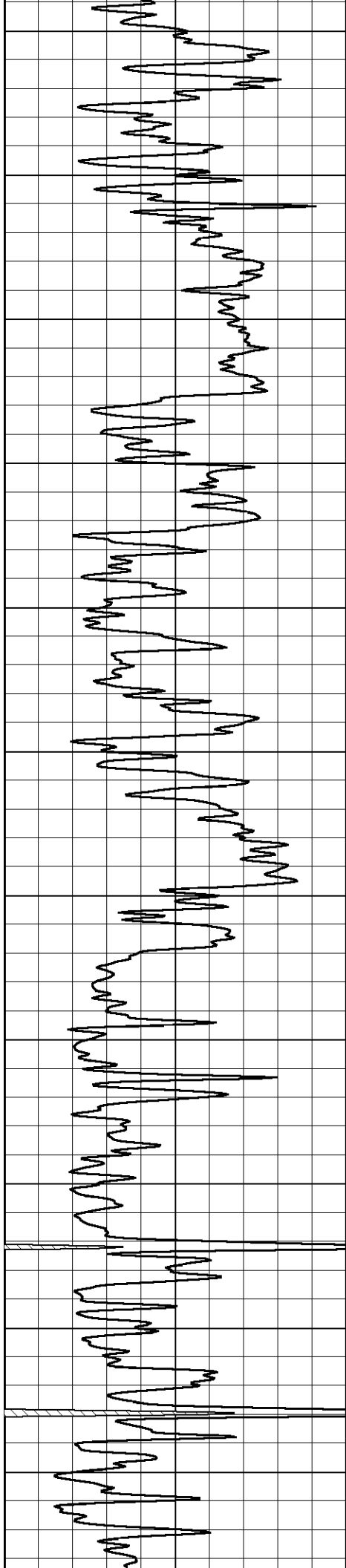




2400  
2450  
2500  
2550  
2600  
2650  
2700  
2750  
2800  
2850  
2900



-77  
-75  
-75  
-75  
-75  
-75  
-75  
-76  
-75  
-76  
-76



2950

3000

3050

3100

3150

3200

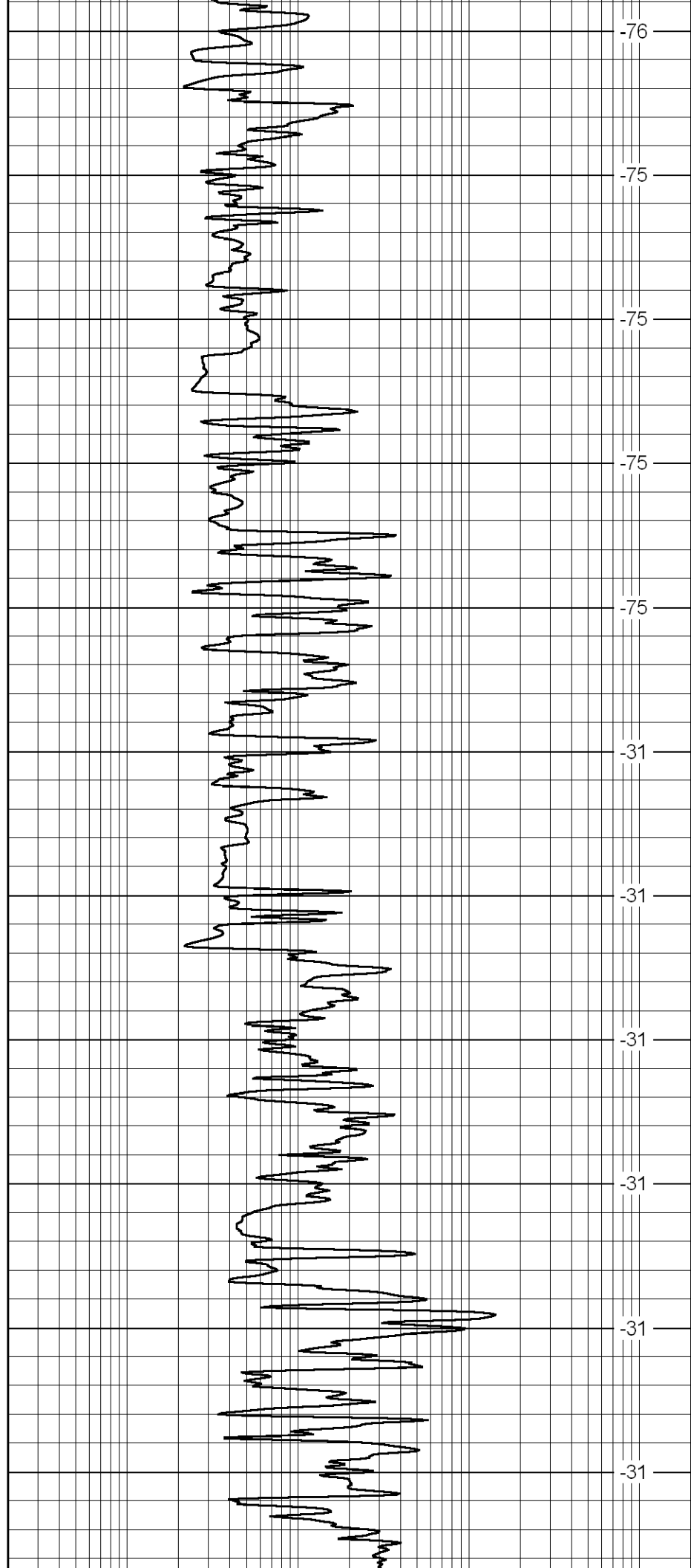
3250

3300

3350

3400

3450



-76

-75

-75

-75

-75

-31

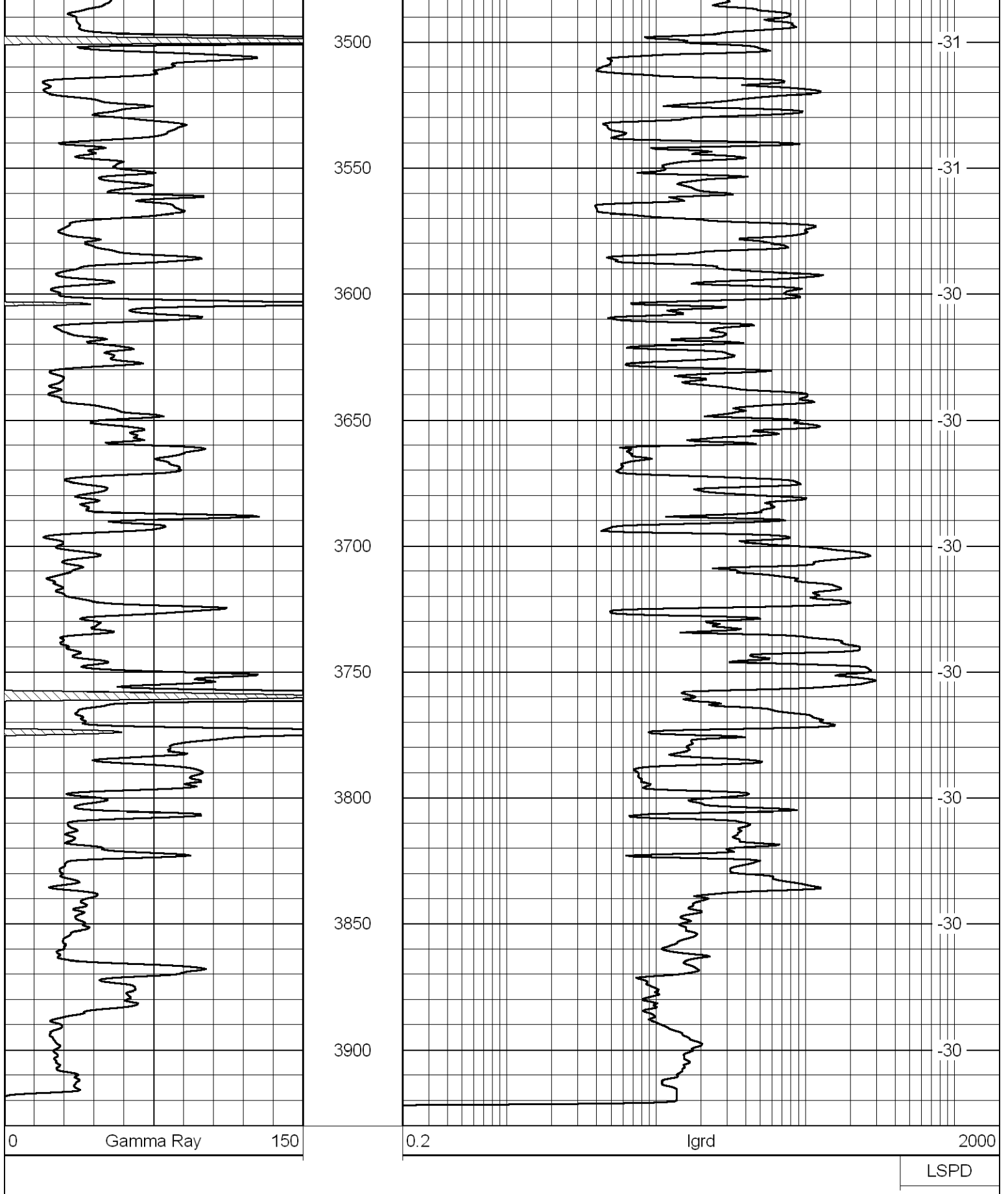
-31

-31

-31

-31

-31

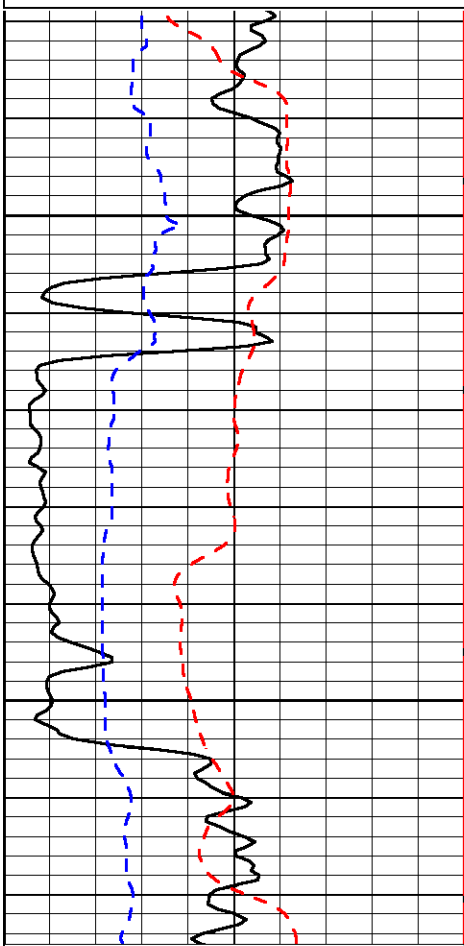


Database File: tomhd.db  
 Dataset Pathname: rag/tomrag  
 Presentation Format: rag  
 Dataset Creation: Sun Dec 18 16:20:13 2011  
 Charted by: Depth in Feet scaled 1:240

6	Caliper (GAPI)	16
-200	sp	0

0.2	LGRD	2000
560	SWNC	2160
15000	Line Tension	0

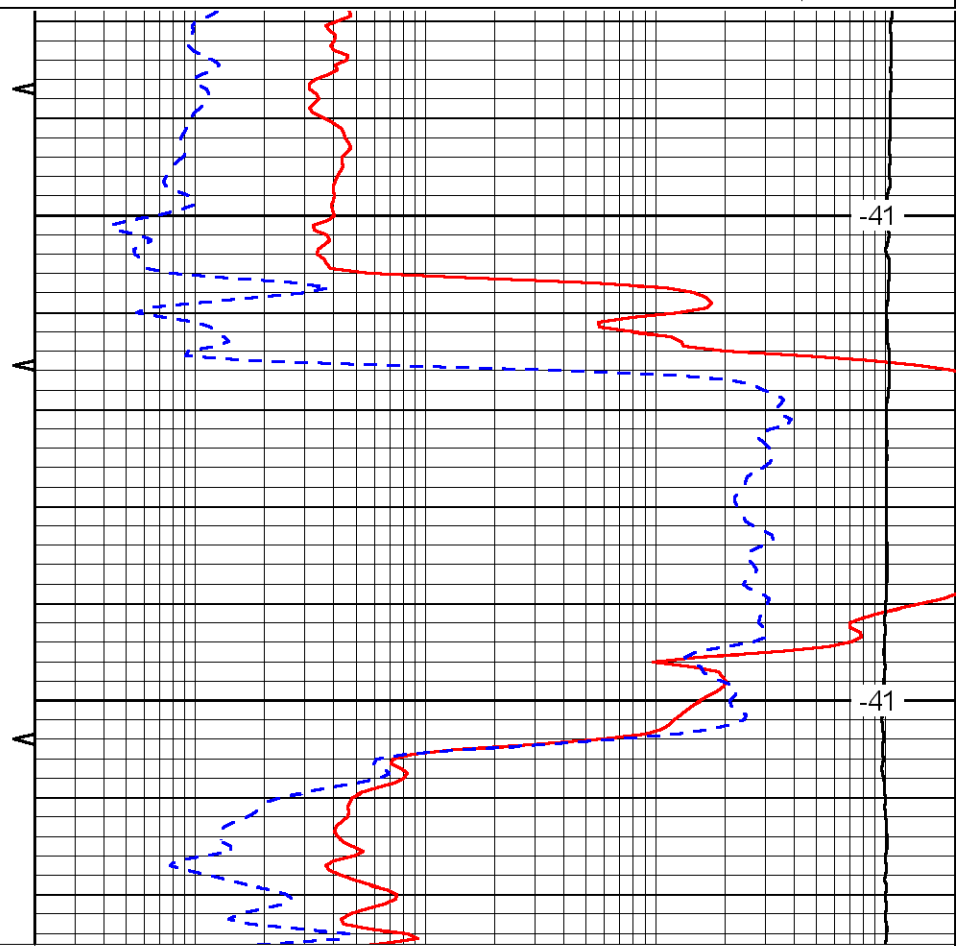
LSPD



1550

1600

0	Gamma Ray	150
6	Caliper (GAPI)	16
-200	sp	0



-41

-41

0.2	LGRD	2000
560	SWNC	2160
15000	Line Tension	0

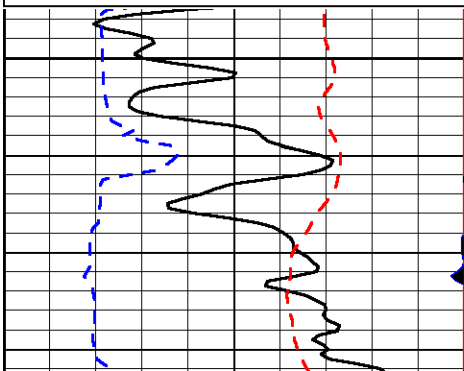
LSPD

Database File: tomhd.db  
 Dataset Pathname: rag/tomrag  
 Presentation Format: rag  
 Dataset Creation: Sun Dec 18 16:20:13 2011  
 Charted by: Depth in Feet scaled 1:240

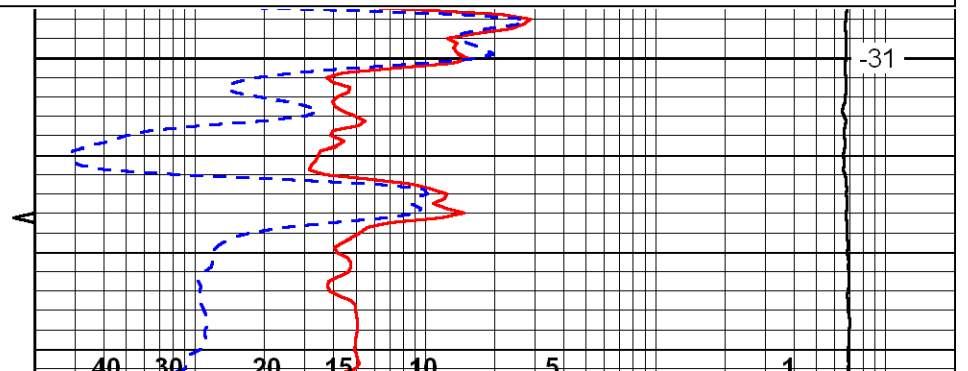
0	Gamma Ray	150
6	Caliper (GAPI)	16
-200	sp	0

0.2	LGRD	2000
560	SWNC	2160
15000	Line Tension	0

LSPD



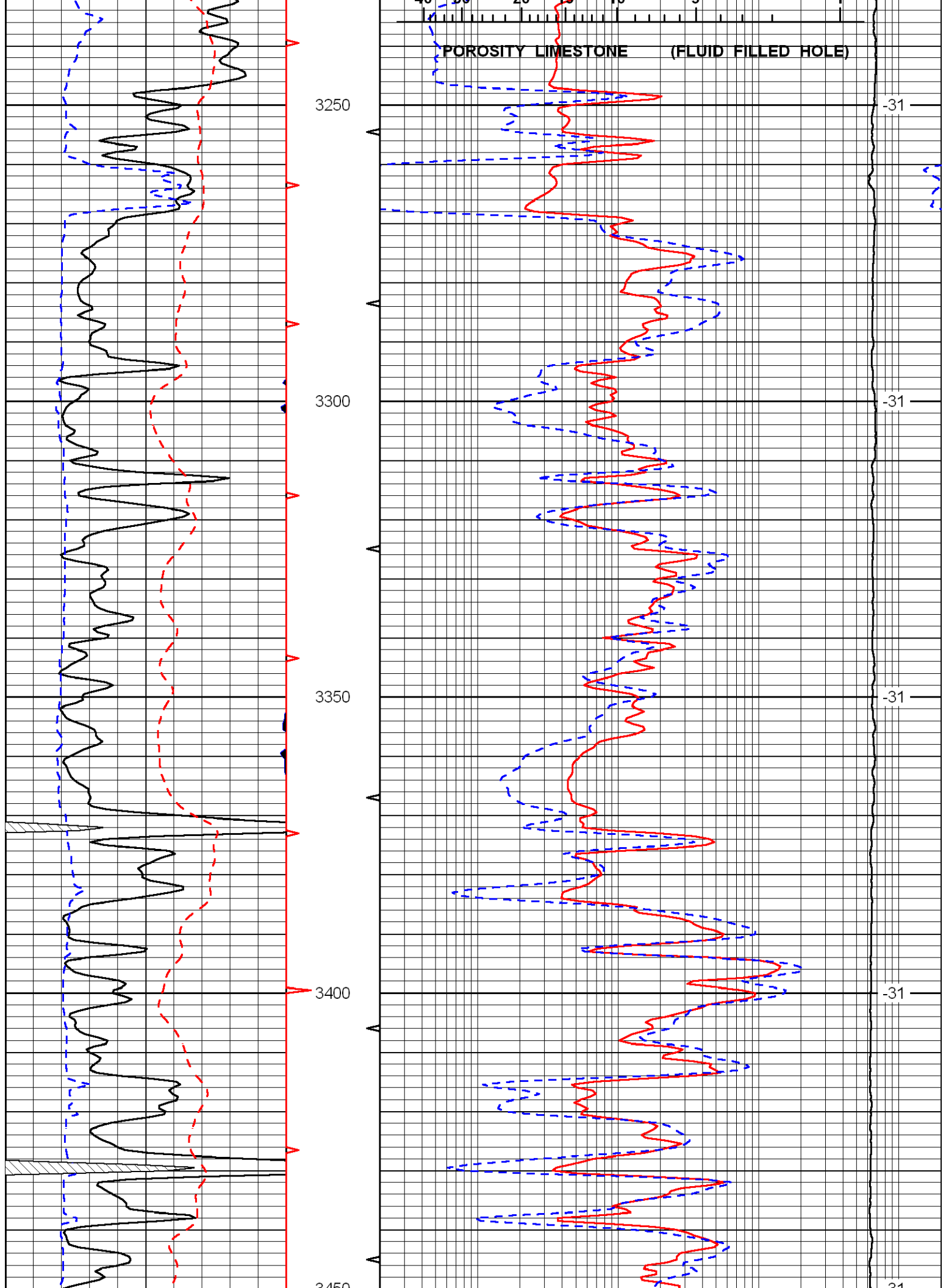
3200

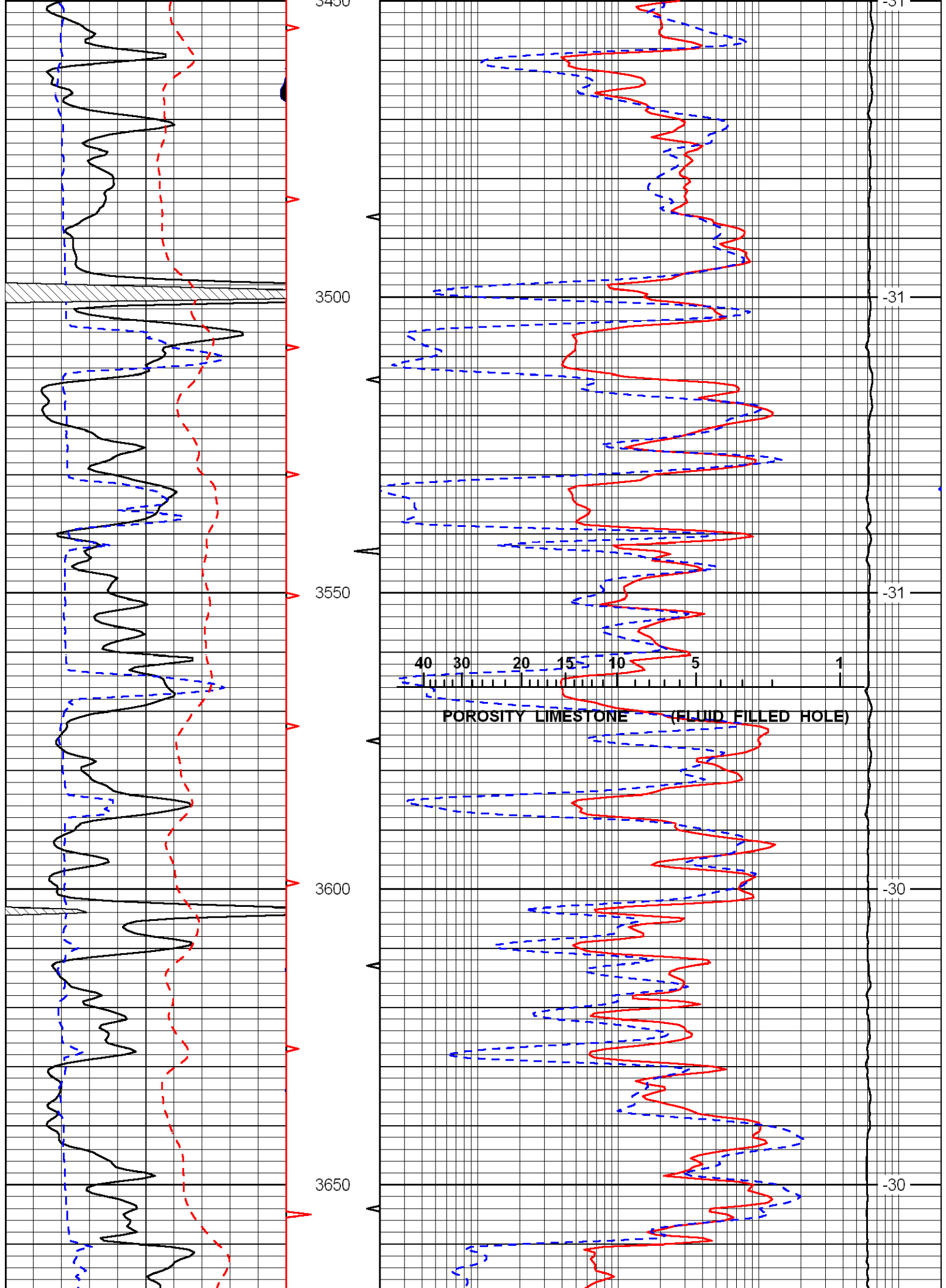


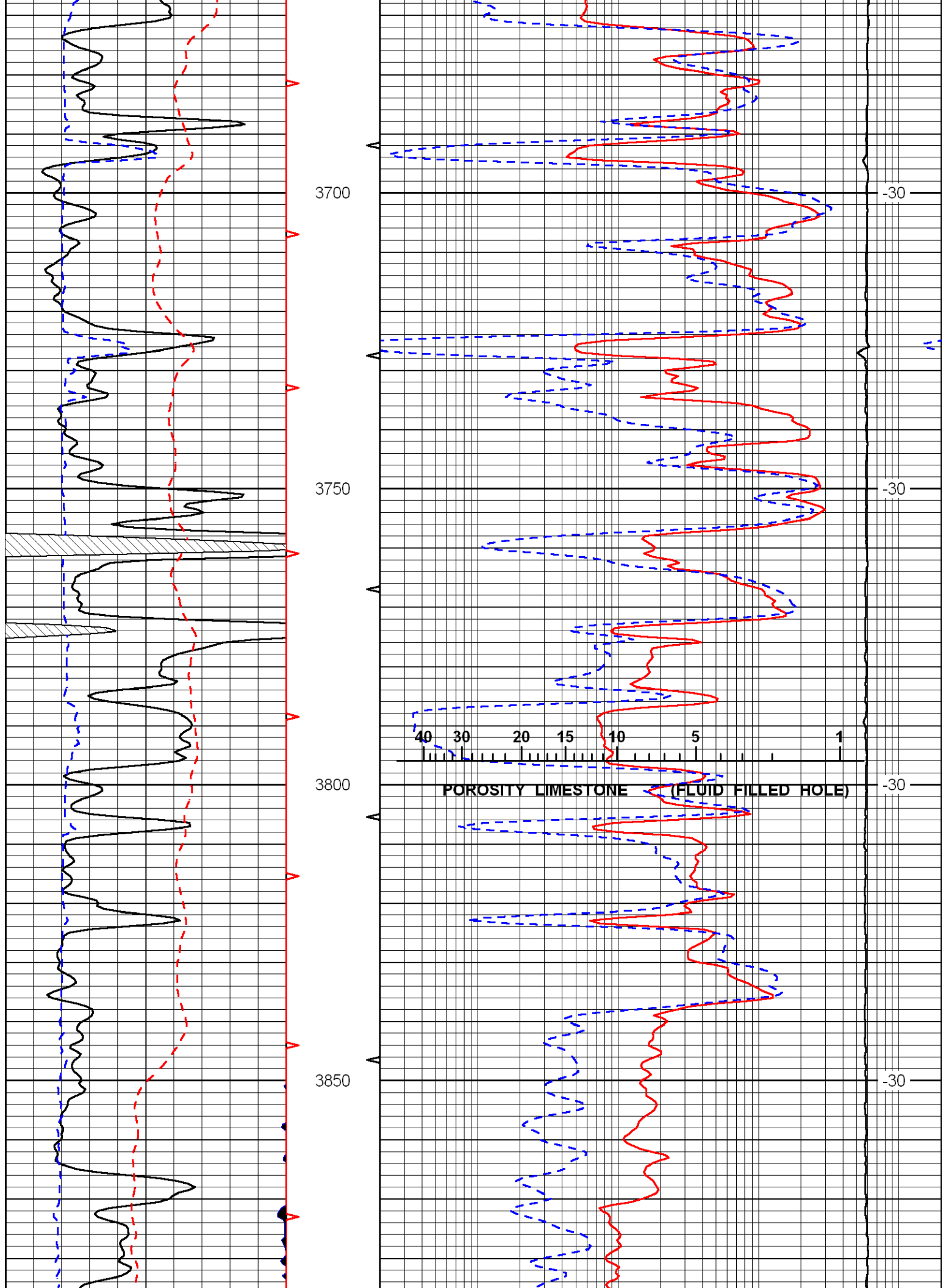
-31

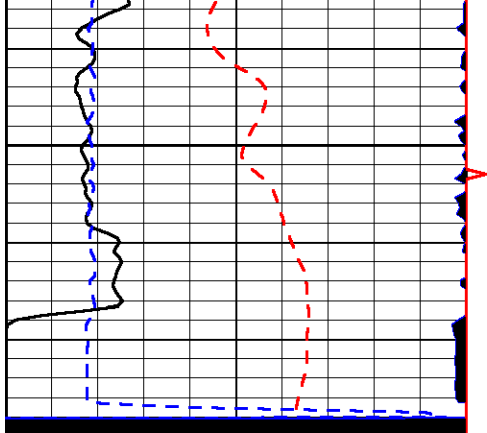
40 30 20 15 10 5 1

POROSITY LIMESTONE (FLUID FILLED HOLE)



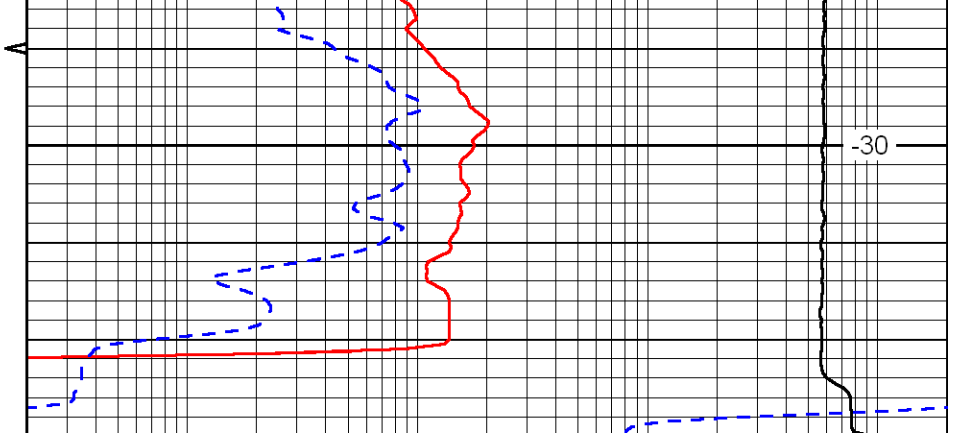






3900

0	Gamma Ray	150
6	Caliper (GAPI)	16
-200	sp	0



-30

0.2	LGRD	2000
560	SWNC	2160
15000	Line Tension	0

LSPD