



Dual Induction Log

DIGITAL LOG (785) 625-3858

15-007-23,784-00-00

API No.

Company **Chieftain Oil Company, Inc.**

Well **Leysa SWD No.1**

Field
County **Barber** State **Kansas**

Location
**NE NW SW SW
1220' FSL & 340' FWL**

Sec: **2** Twp: **35S** Rge: **11W**

Permanent Datum **Ground Level** Elevation **1344**

Log Measured From **Kelly Bushing** 10 Ft. Above Perm. Datum

Drilling Measured From **Kelly Bushing**

Date **11/6/2011**

Run Number **One**

Depth Driller **6260**

Depth Logger **6265**

Bottom Logged Interval **6264**

Top Log Interval **850**

Casing Driller **8.625 @ 894**

Casing Logger **894**

Bit Size **7.875**

Type Fluid in Hole **Chemical**

Salinity, ppm CL **4,300**

Density / Viscosity **9.3 61**

pH / Fluid Loss **10.0 8.8**

Source of Sample **Flowline**

Rm @ Meas. Temp **.45 @ 69**

Rmf @ Meas. Temp **.34 @ 69**

Rmc @ Meas. Temp **.61 @ 69**

Source of Rmf / Rmc **Charts**

Rm @ BHT **.22 @ 139**

Operating Rig Time **3 Hours**

Max Rec. Temp. F **139**

Equipment Number **17**

Location **Hays**

Recorded By **C. Desai**

Witnessed By **Arden Ratzlaff**

Other Services **CNL/CDL**

Elevation **1354**

K.B. **1354**

D.F. **1344**

G.L. **1344**

<<< Fold Here >>>

All interpretations are opinions based on inferences from electrical or other measurements and we cannot and do not guarantee the accuracy or correctness of any interpretation, and we shall not, except in the case of gross or willful negligence on our part, be liable or responsible for any loss, costs, damages, or expenses incurred or sustained by anyone resulting from any interpretation made by any of our officers, agents or employees. These interpretations are also subject to our general terms and conditions set out in our current Price Schedule.

Comments

Thank you for using Log-Tech, Inc.
(785) 625-3858

Medicine Lodge KS, S to Kiowa turnoff,
4 E stay straight at curve, 1/2 E to T,
1/4 N, E Into

Database File: c:\warrior\data\chieftain_leya swd no.1\chieftainhd.db
 Dataset Pathname: dil/chfstk
 Presentation Format: dil2in
 Dataset Creation: Sun Nov 06 14:57:47 2011
 Charted by: Depth in Feet scaled 1:600

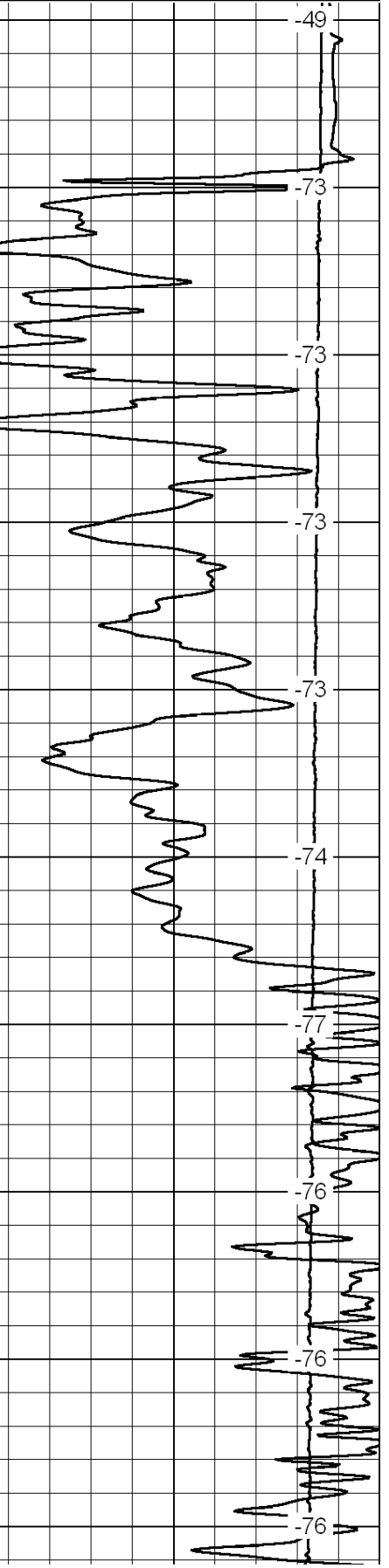
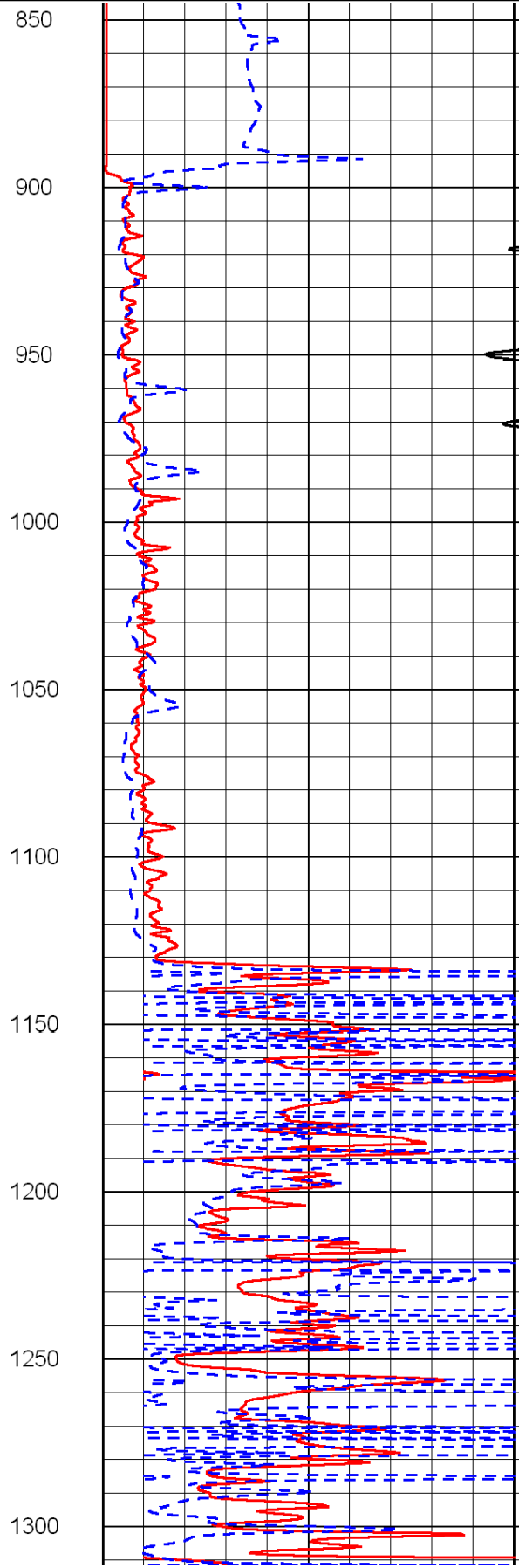
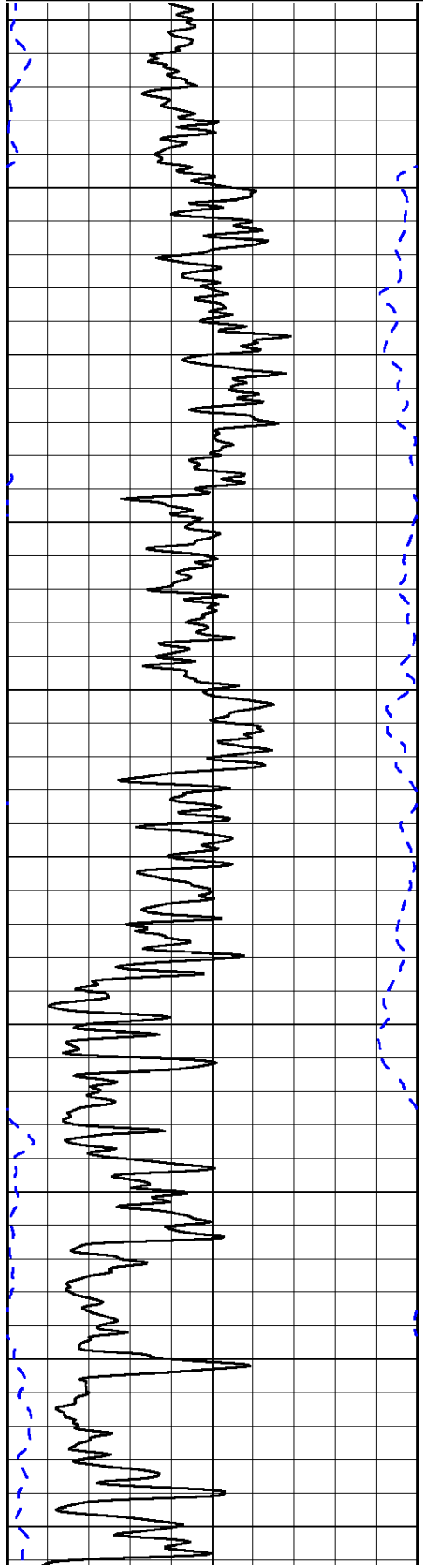
0	Gamma Ray	150
-200	SP (mV)	0

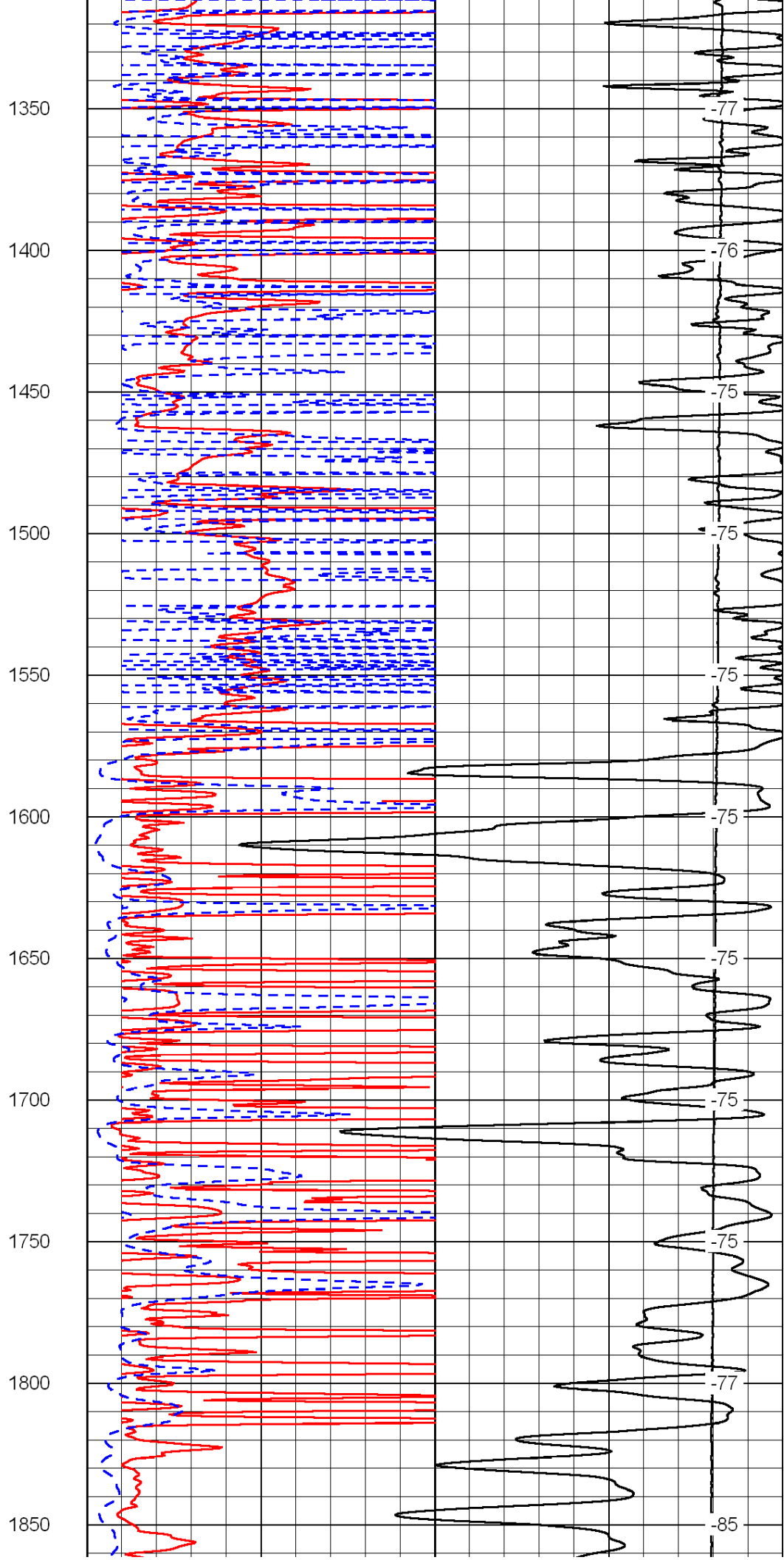
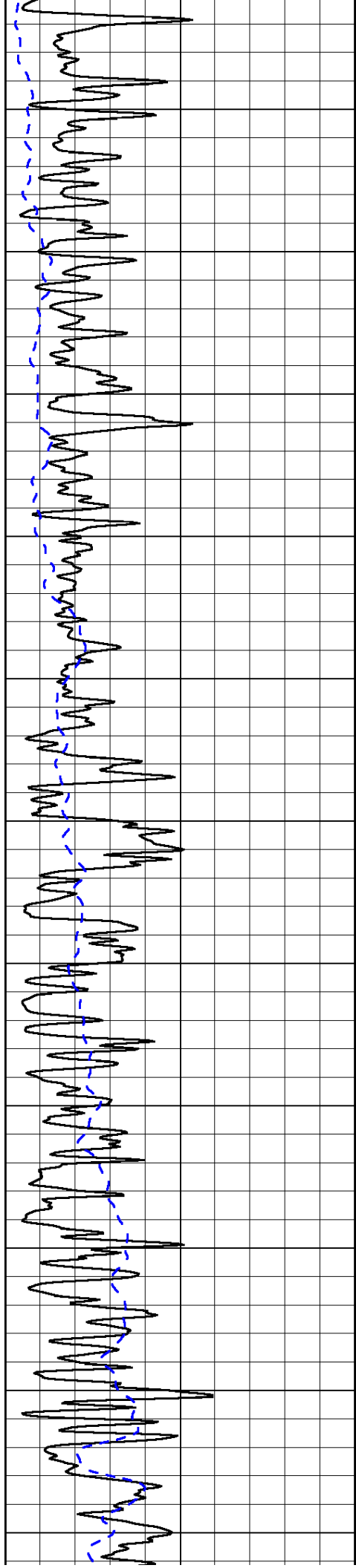
0	Shallow Resistivity	50
0	Deep Resistivity	50

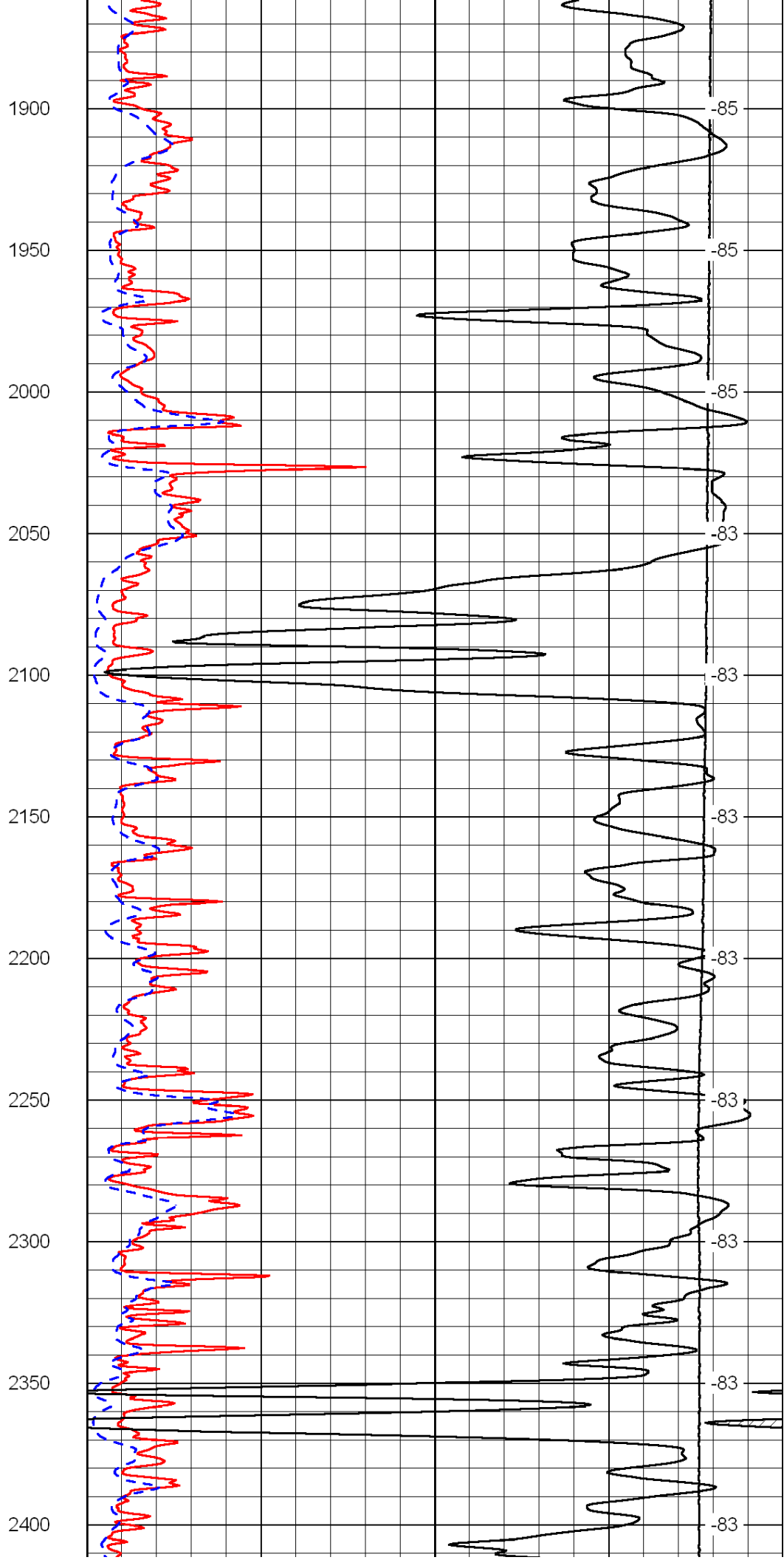
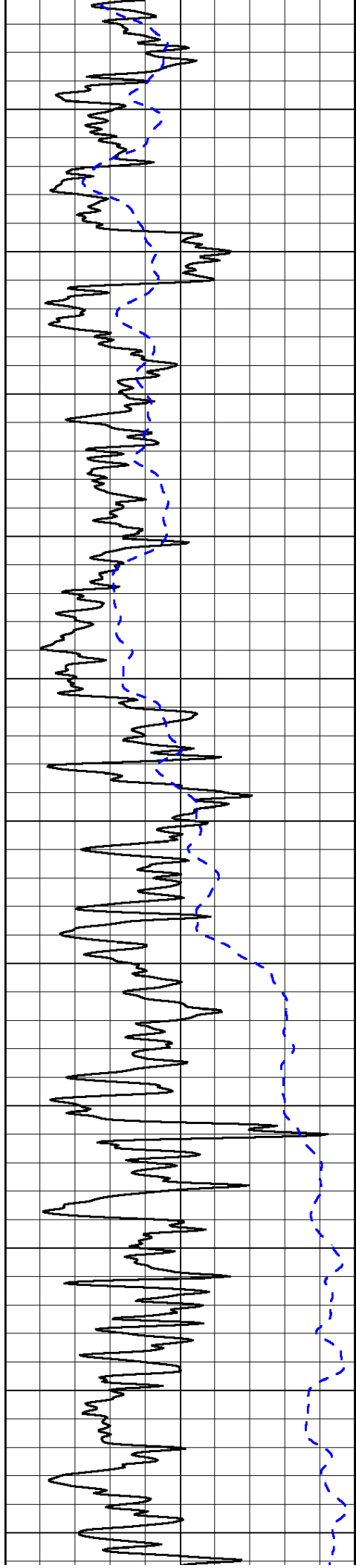
LSPD

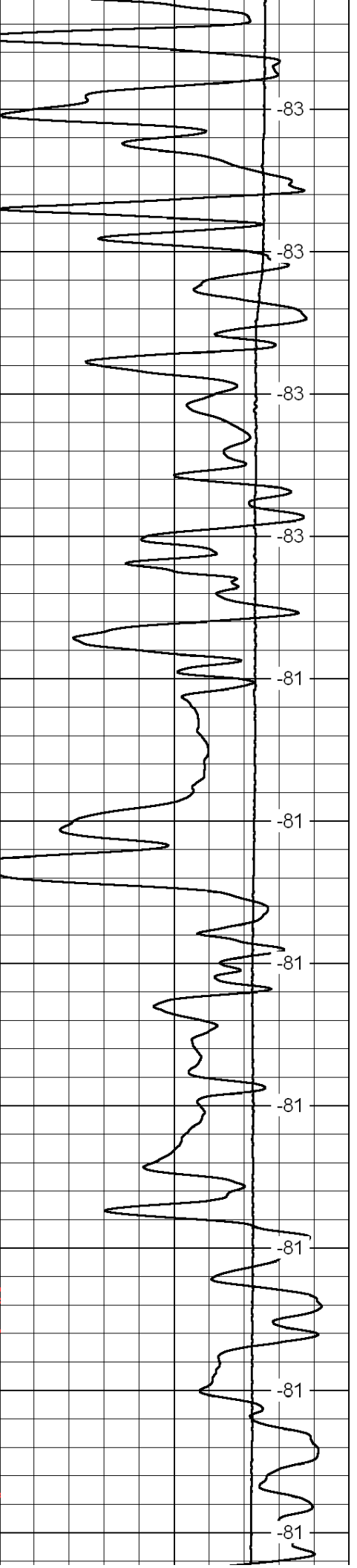
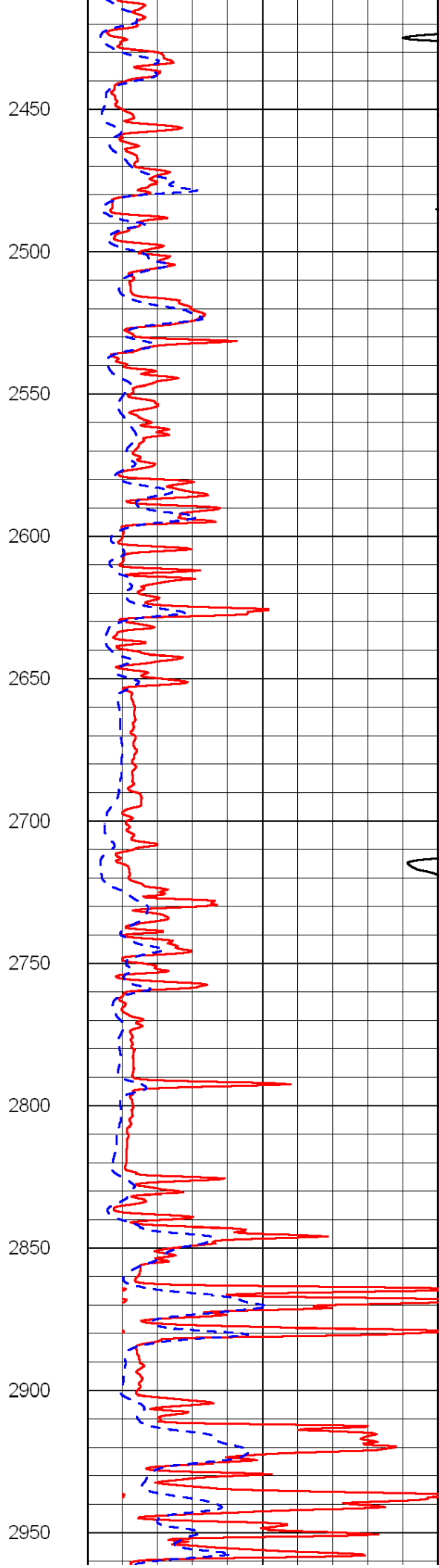
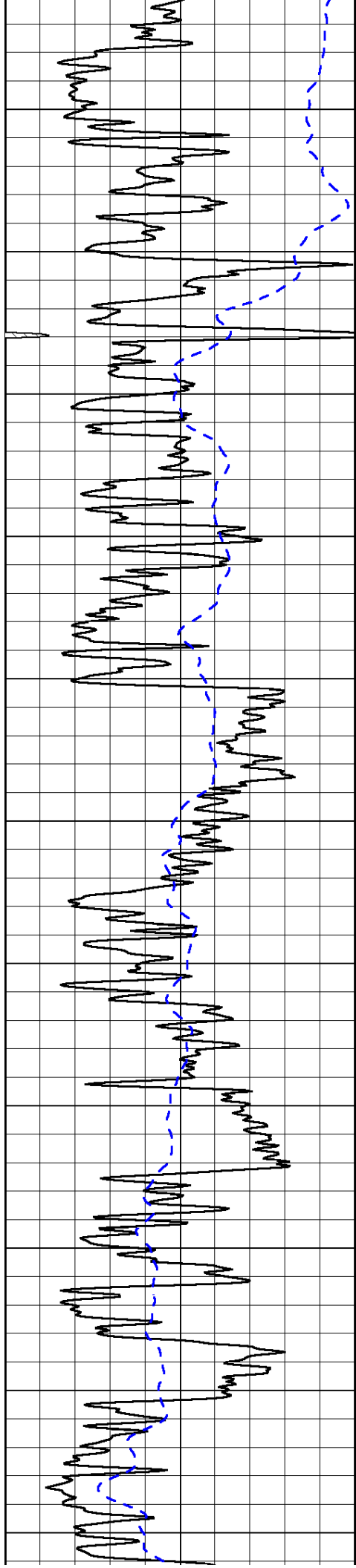
1000	Conductivity	0
15000	Line Tension	0

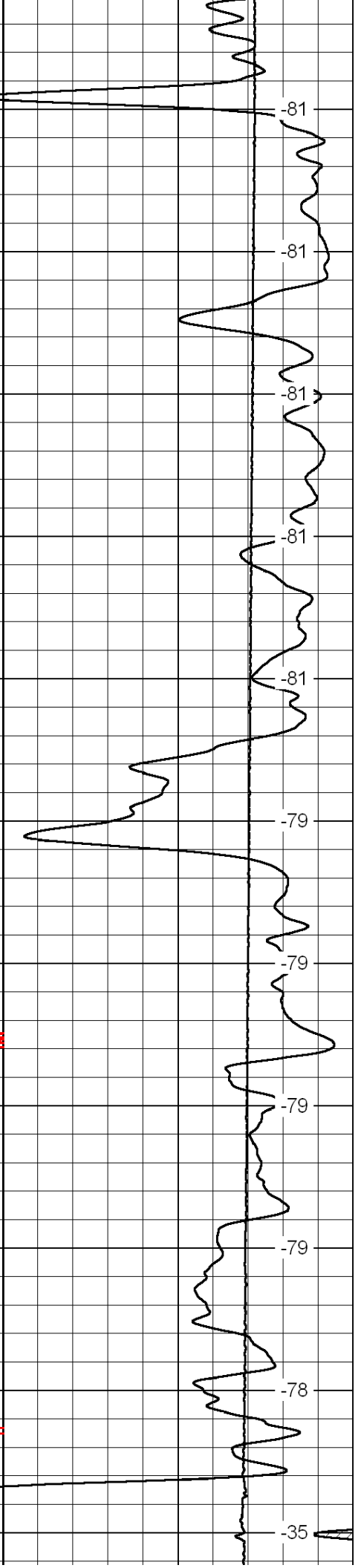
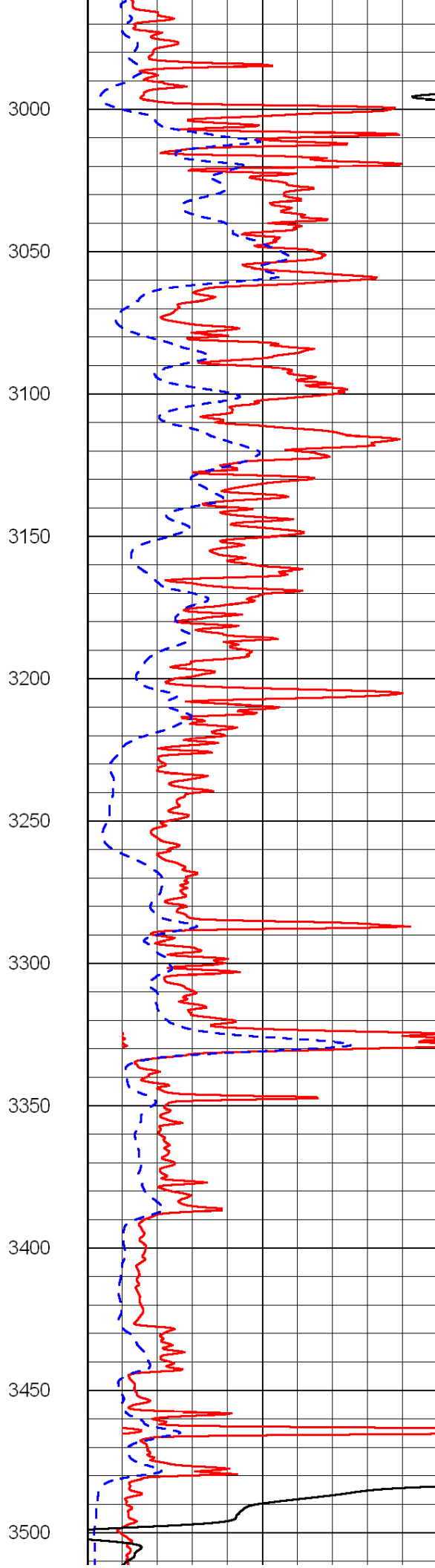
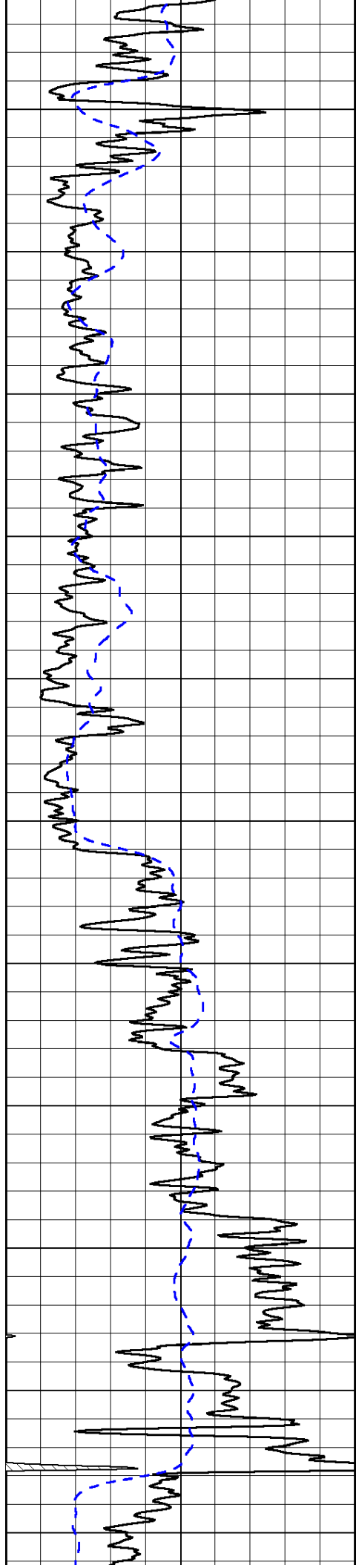
50	Shallow Resistivity	500
50	Deep Resistivity	500

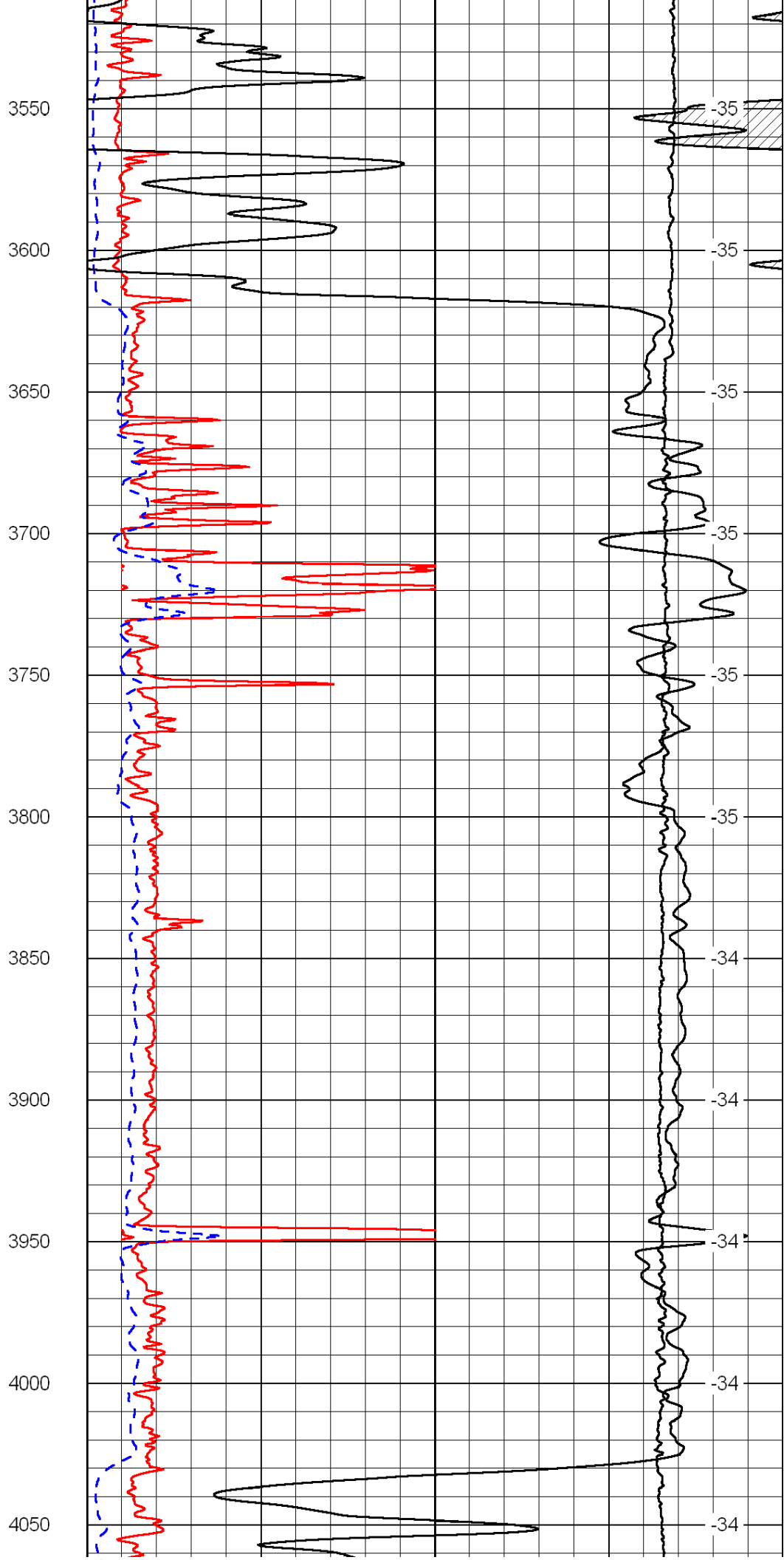
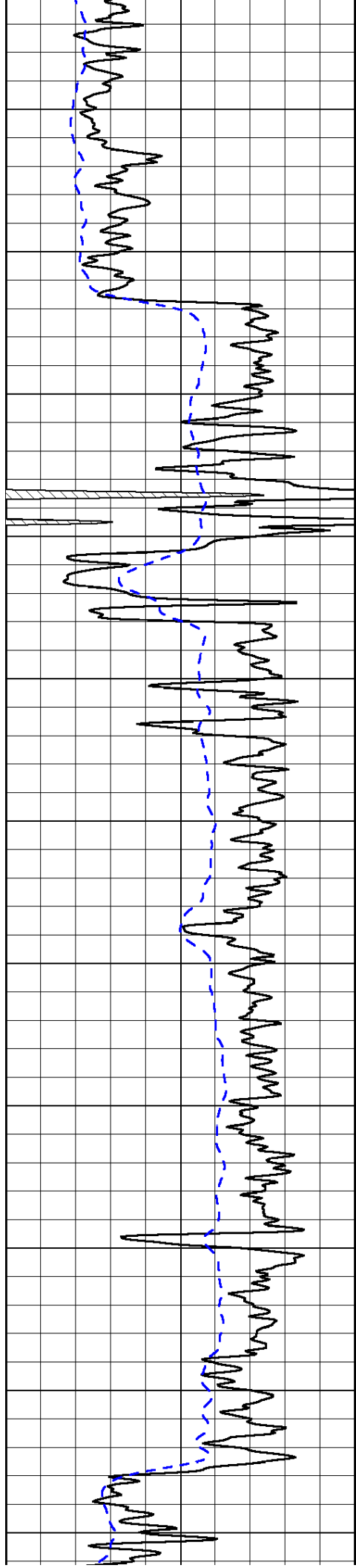


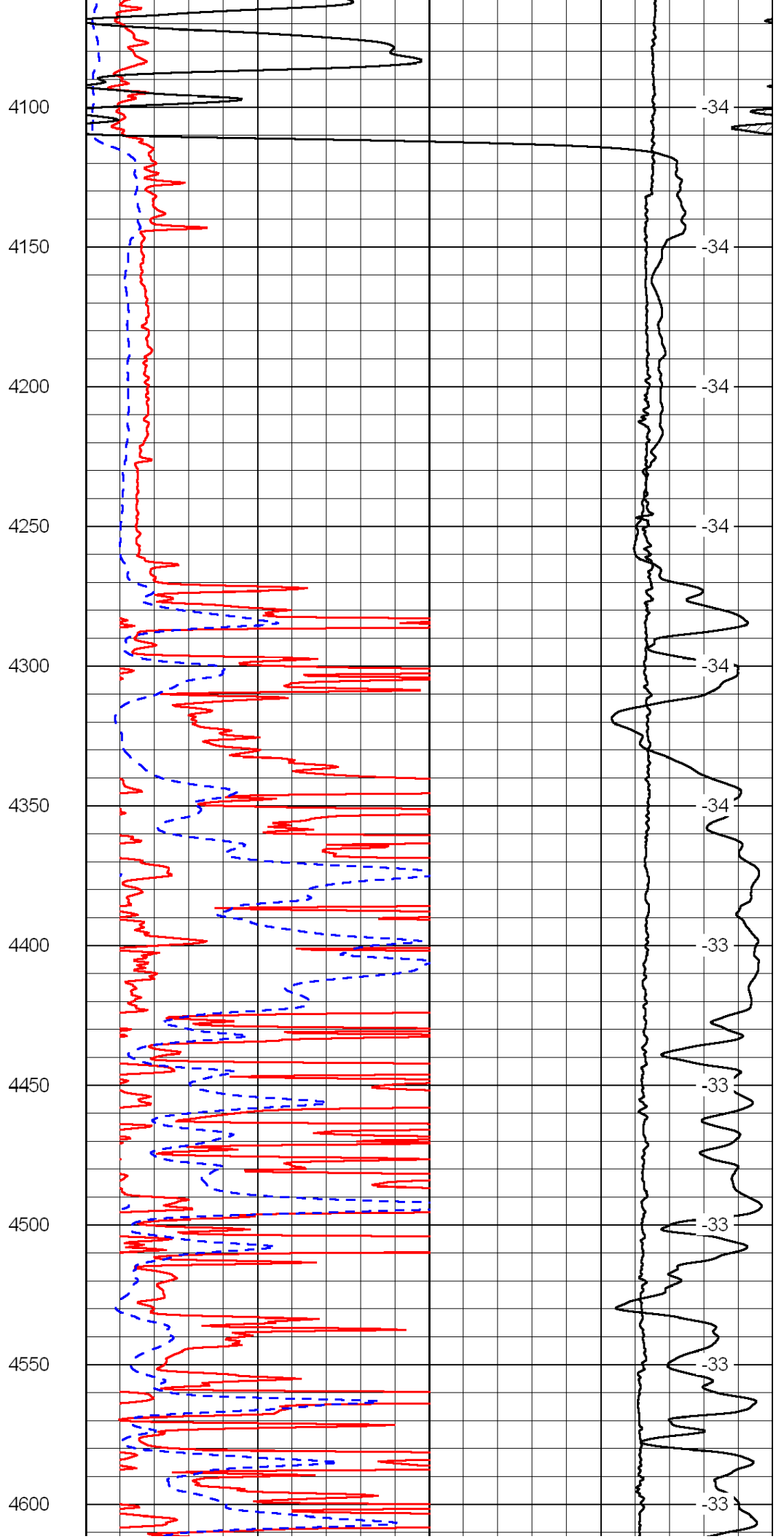
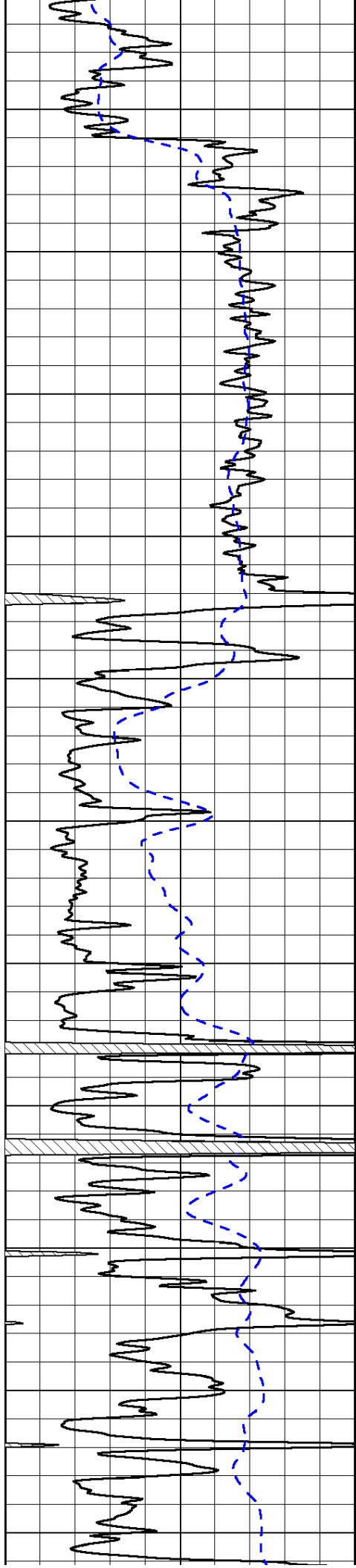


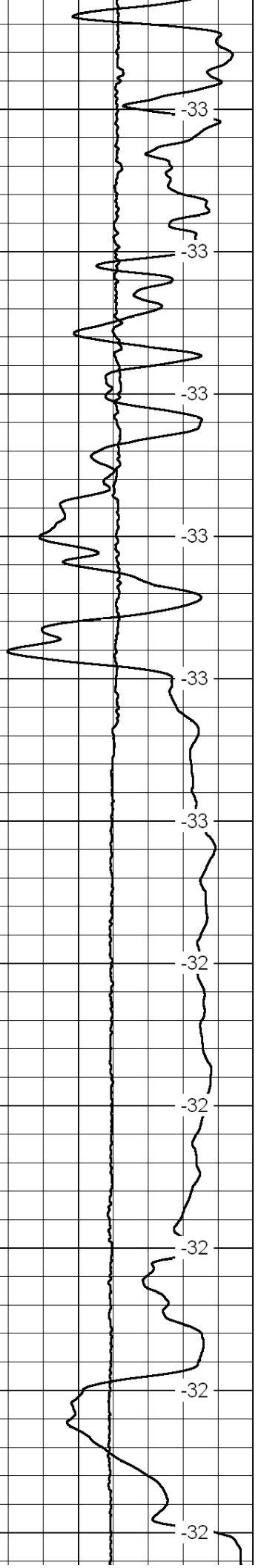
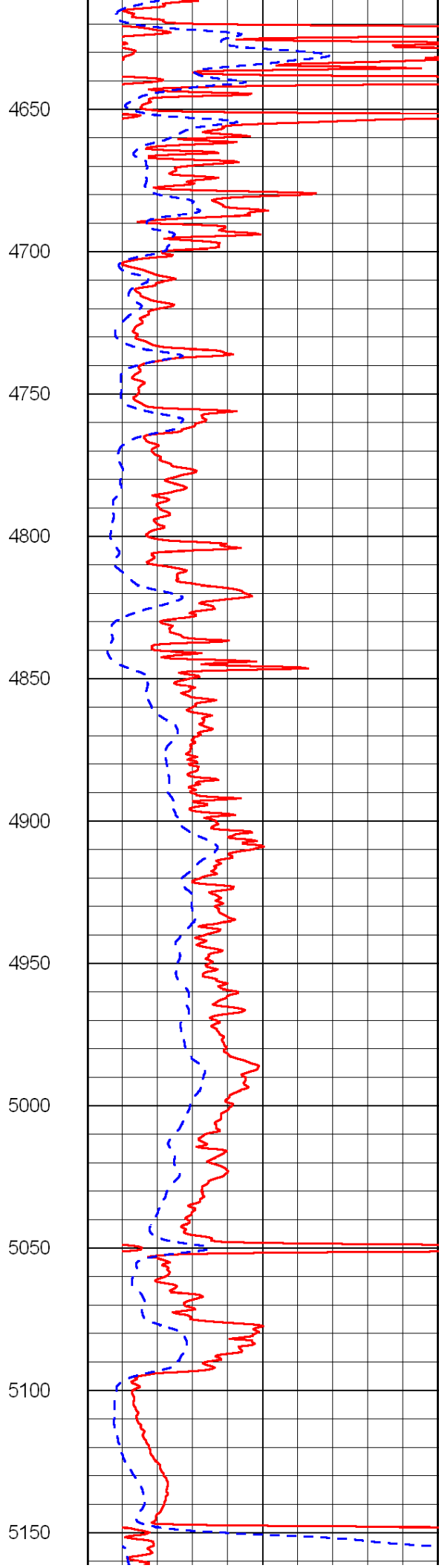
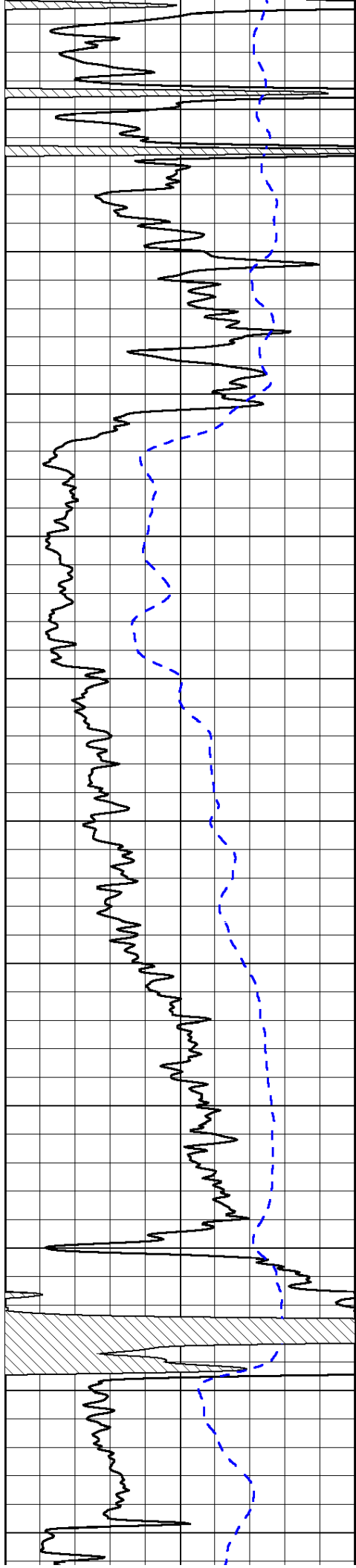


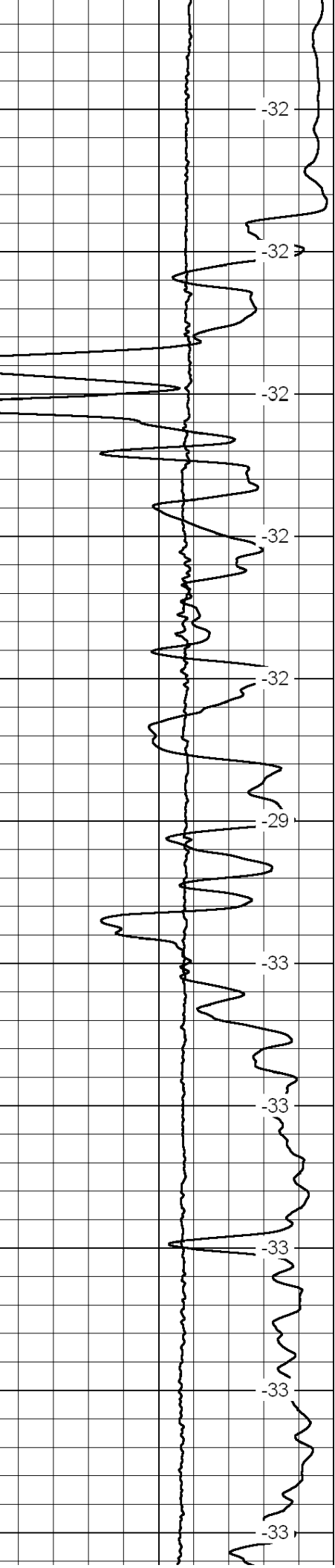
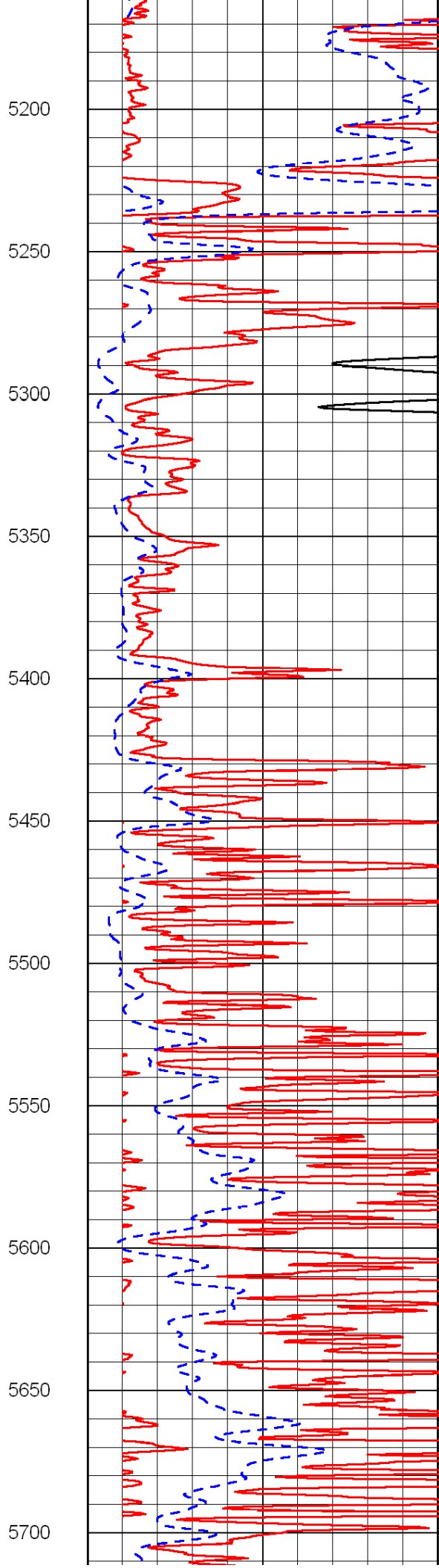
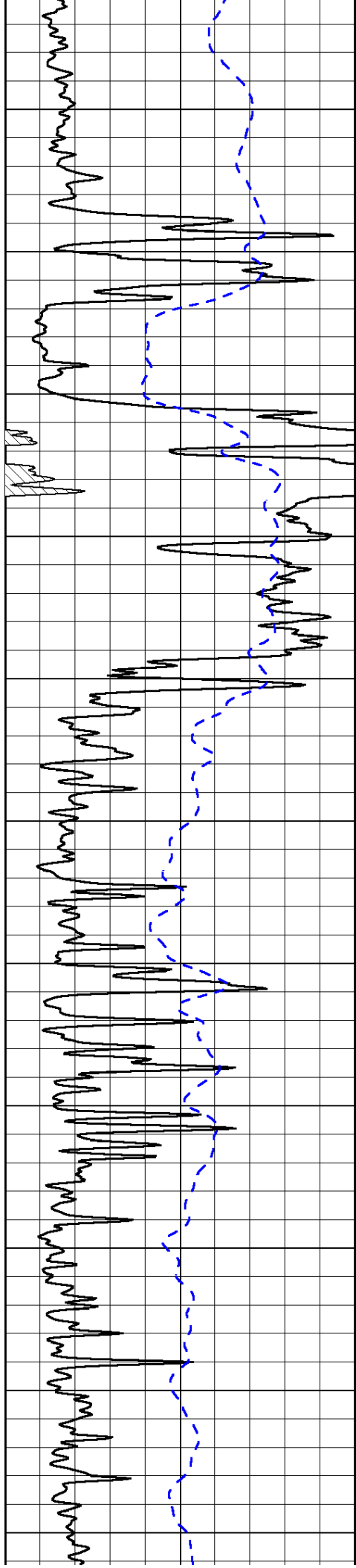


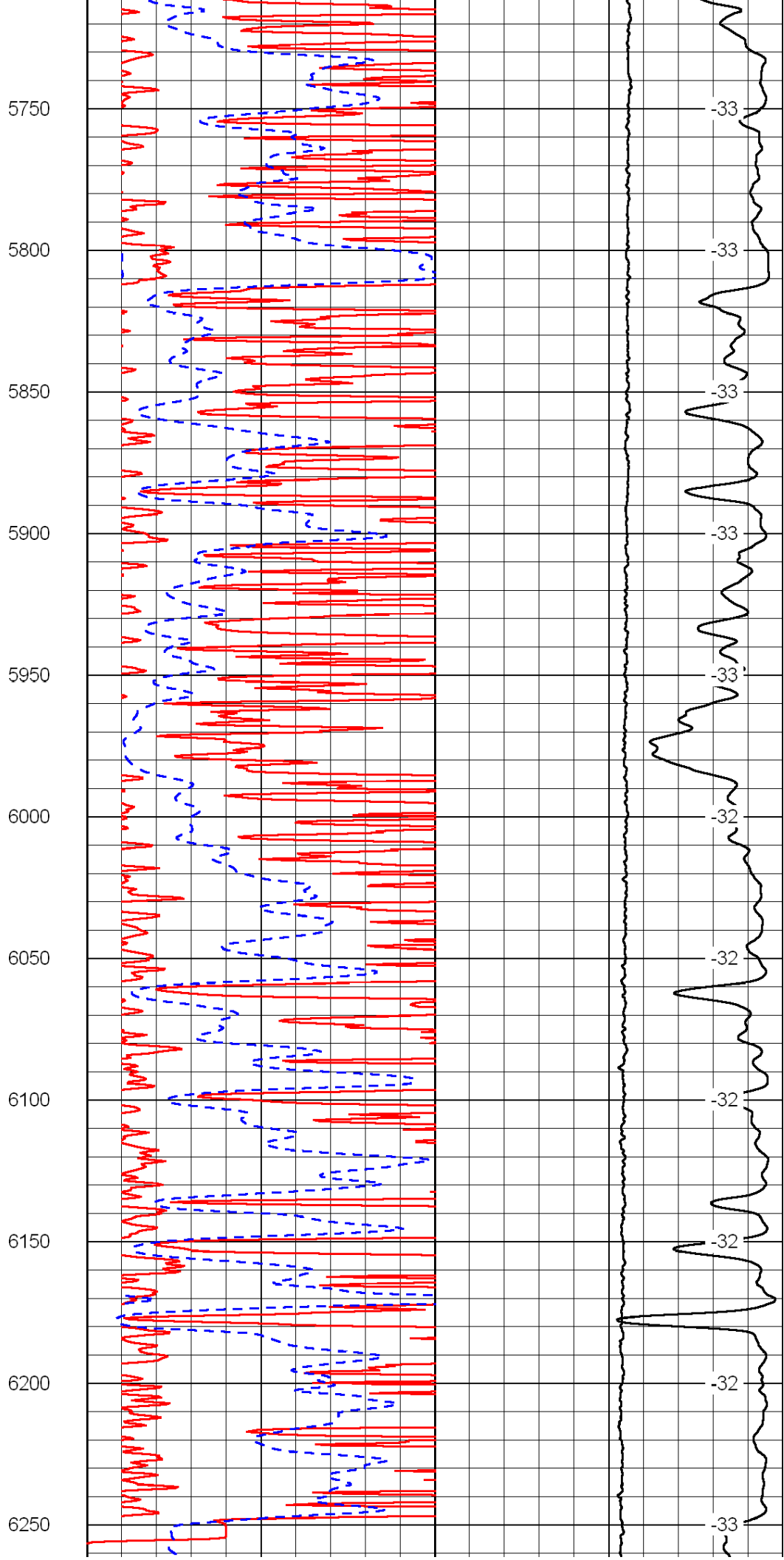
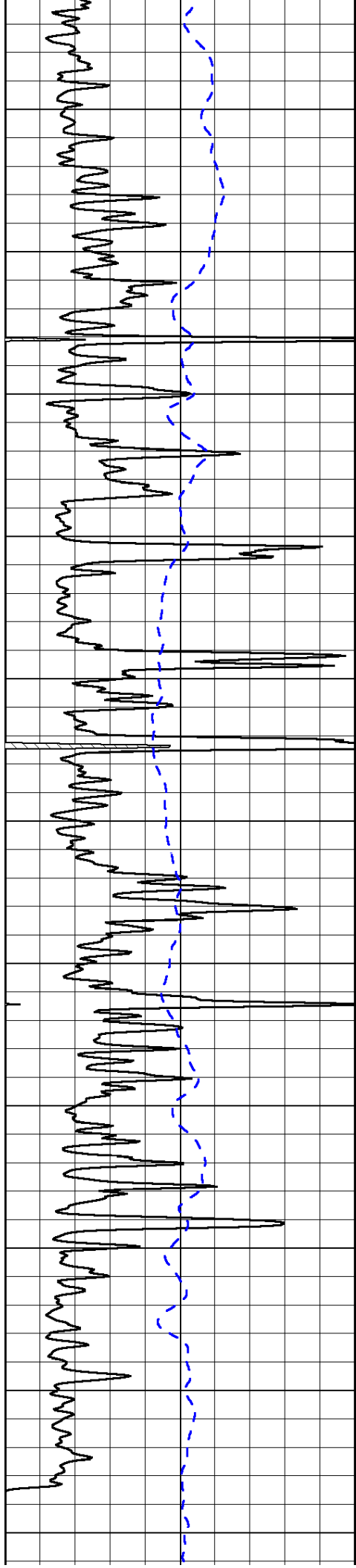


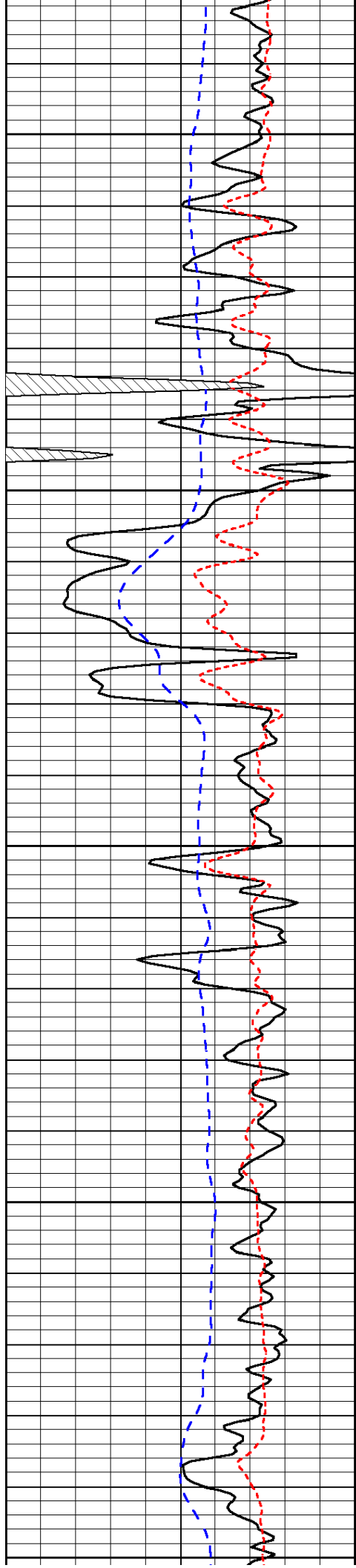












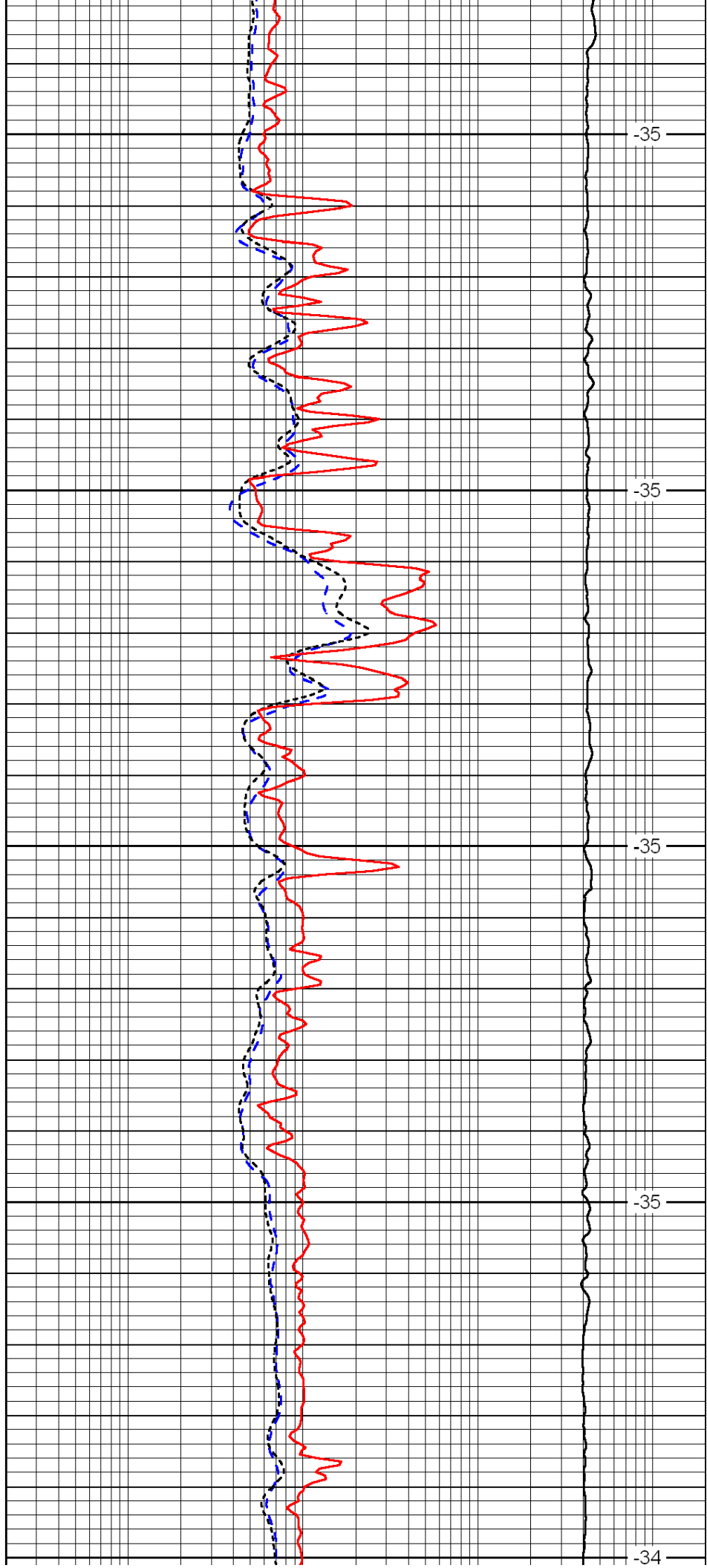
3650

3700

3750

3800

3850



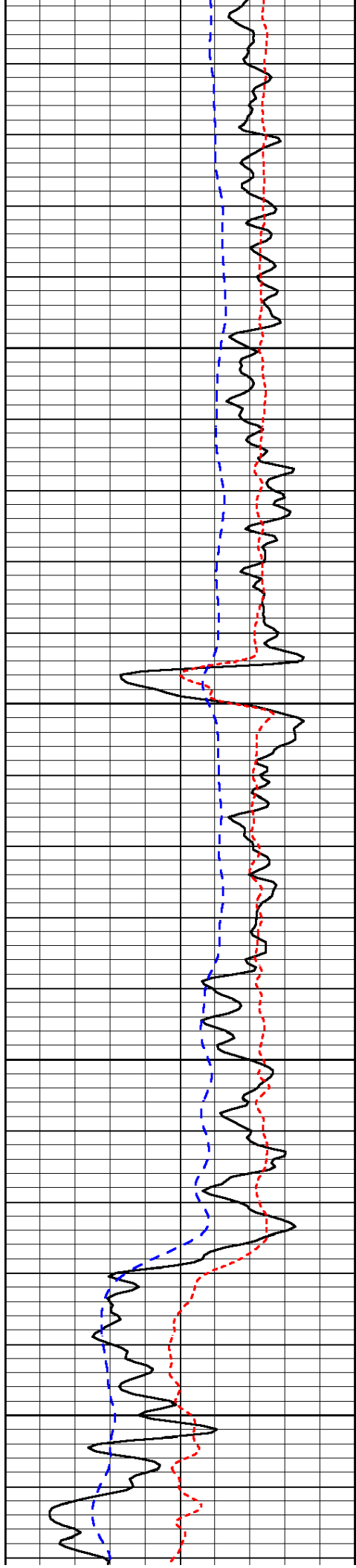
-35

-35

-35

-35

-34

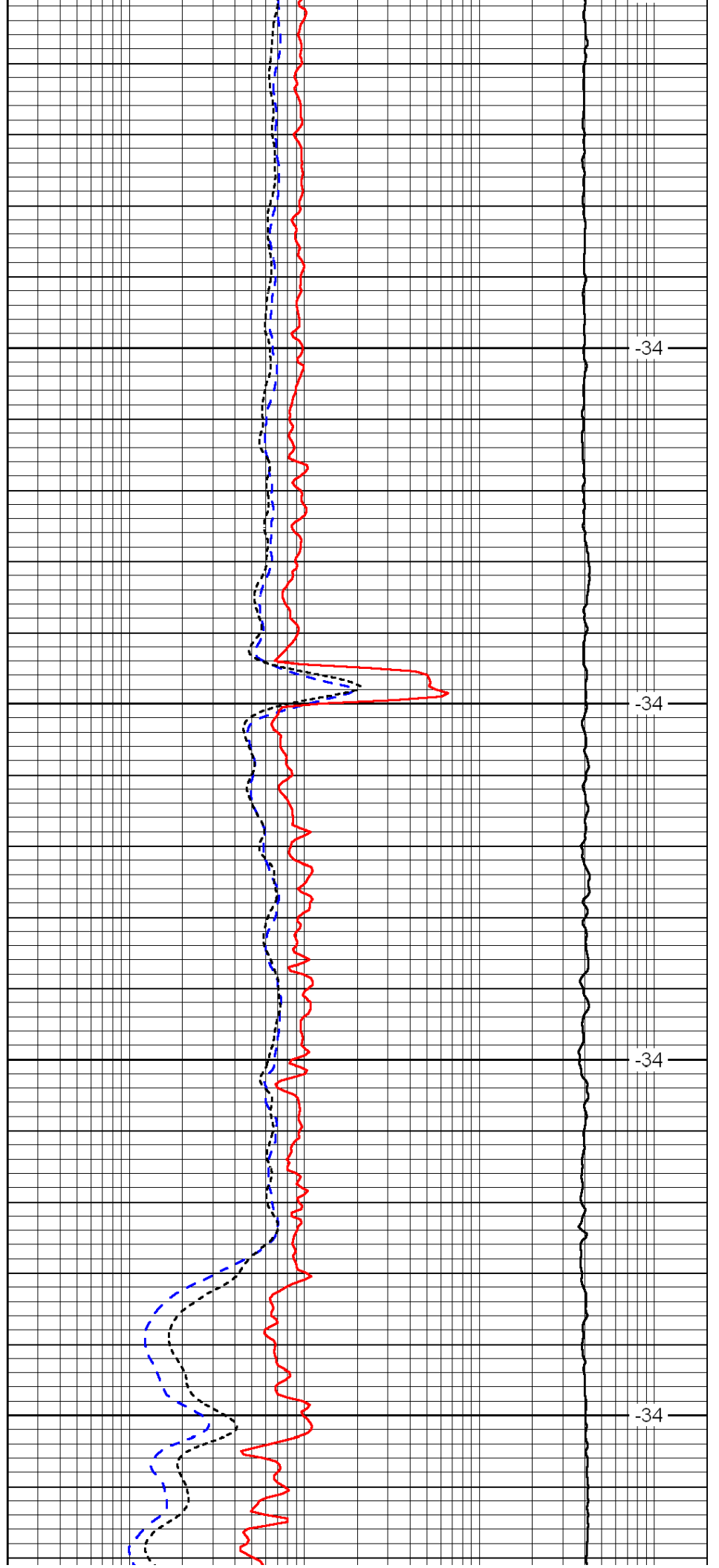


3900

3950

4000

4050

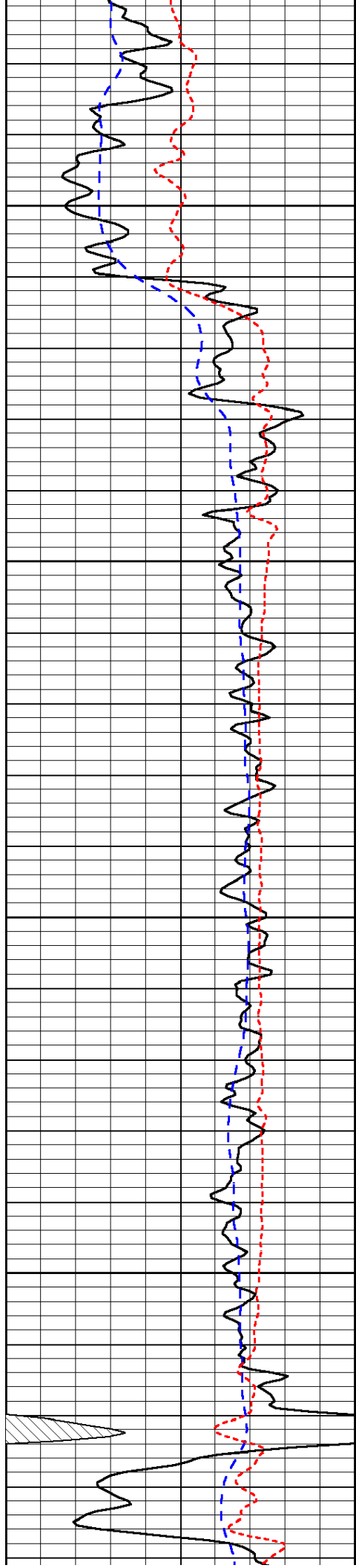


-34

-34

-34

-34

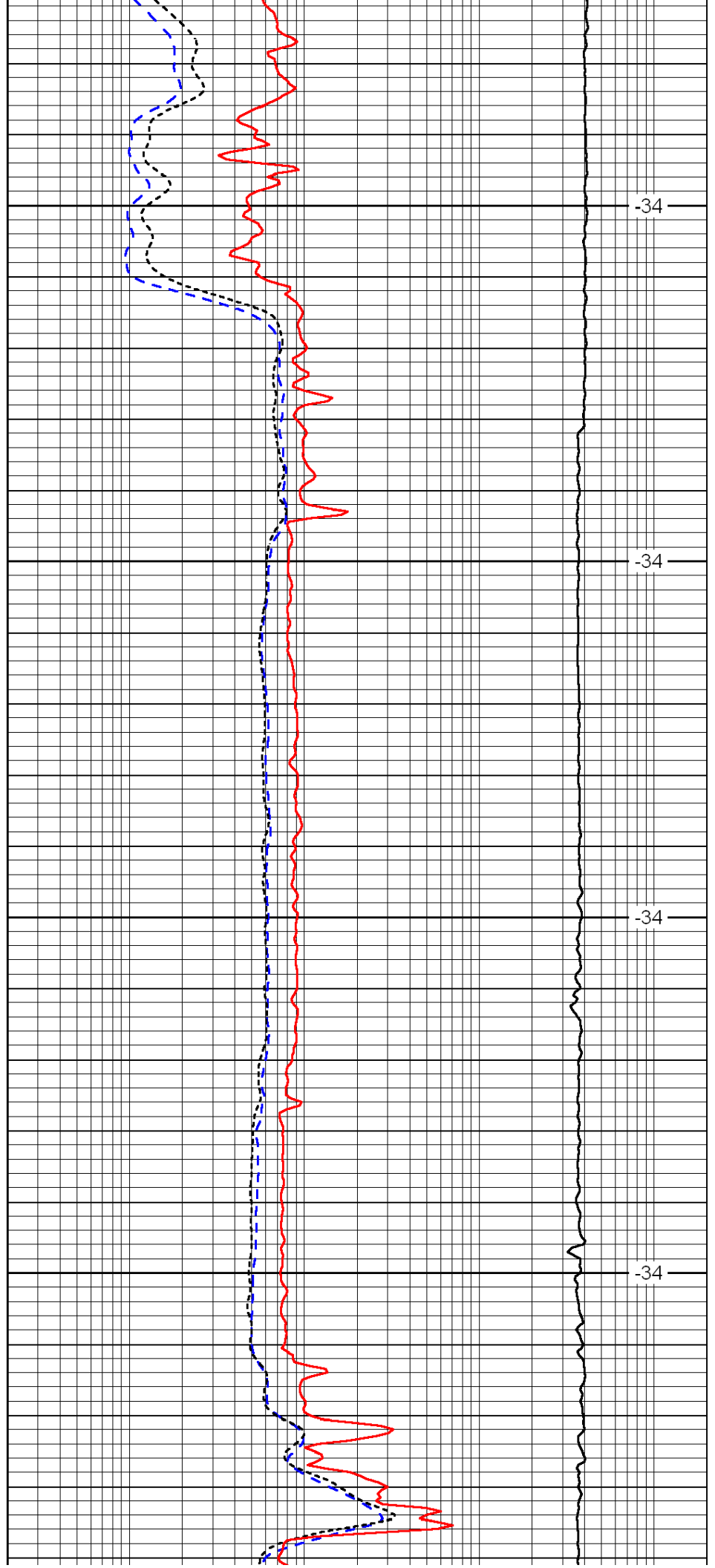


4100

4150

4200

4250

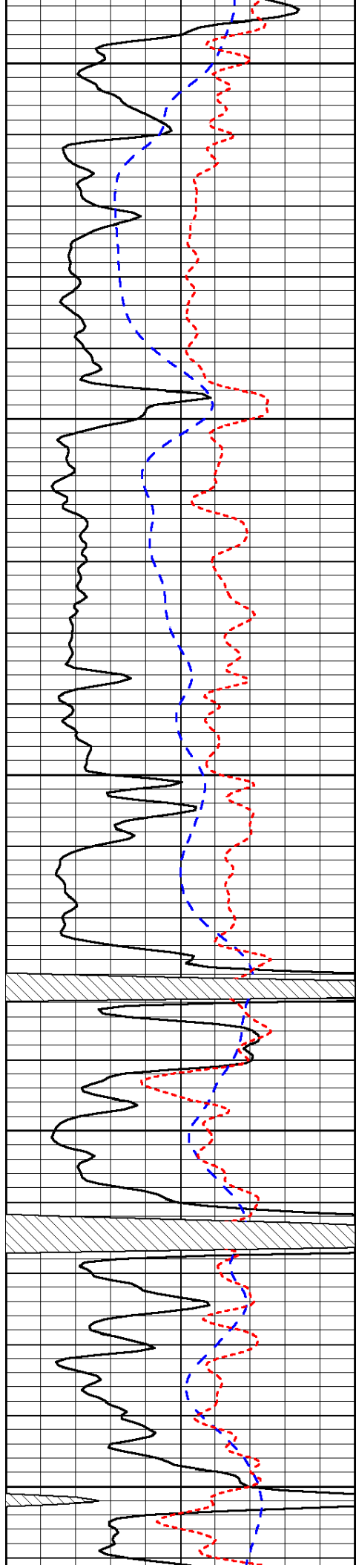


-34

-34

-34

-34



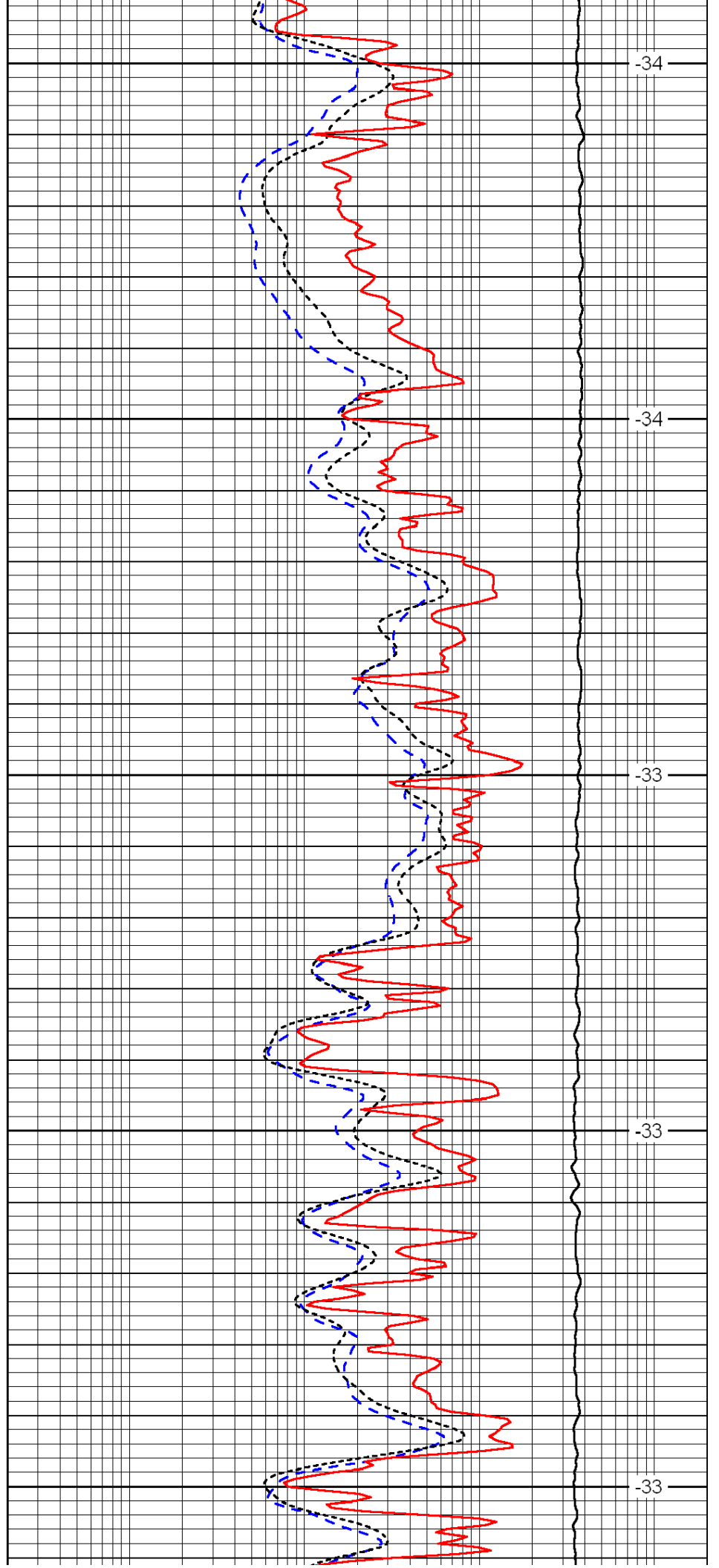
4300

4350

4400

4450

4500



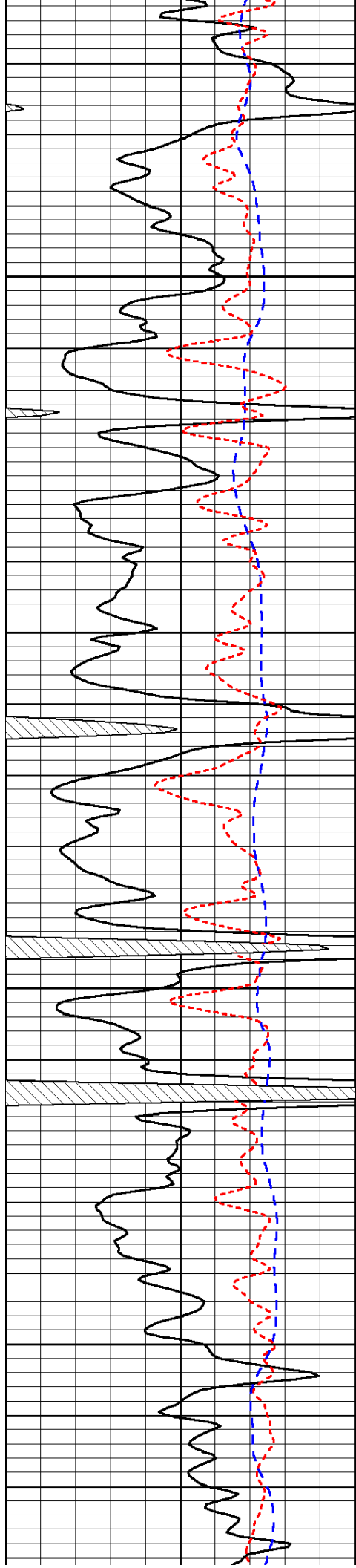
-34

-34

-33

-33

-33

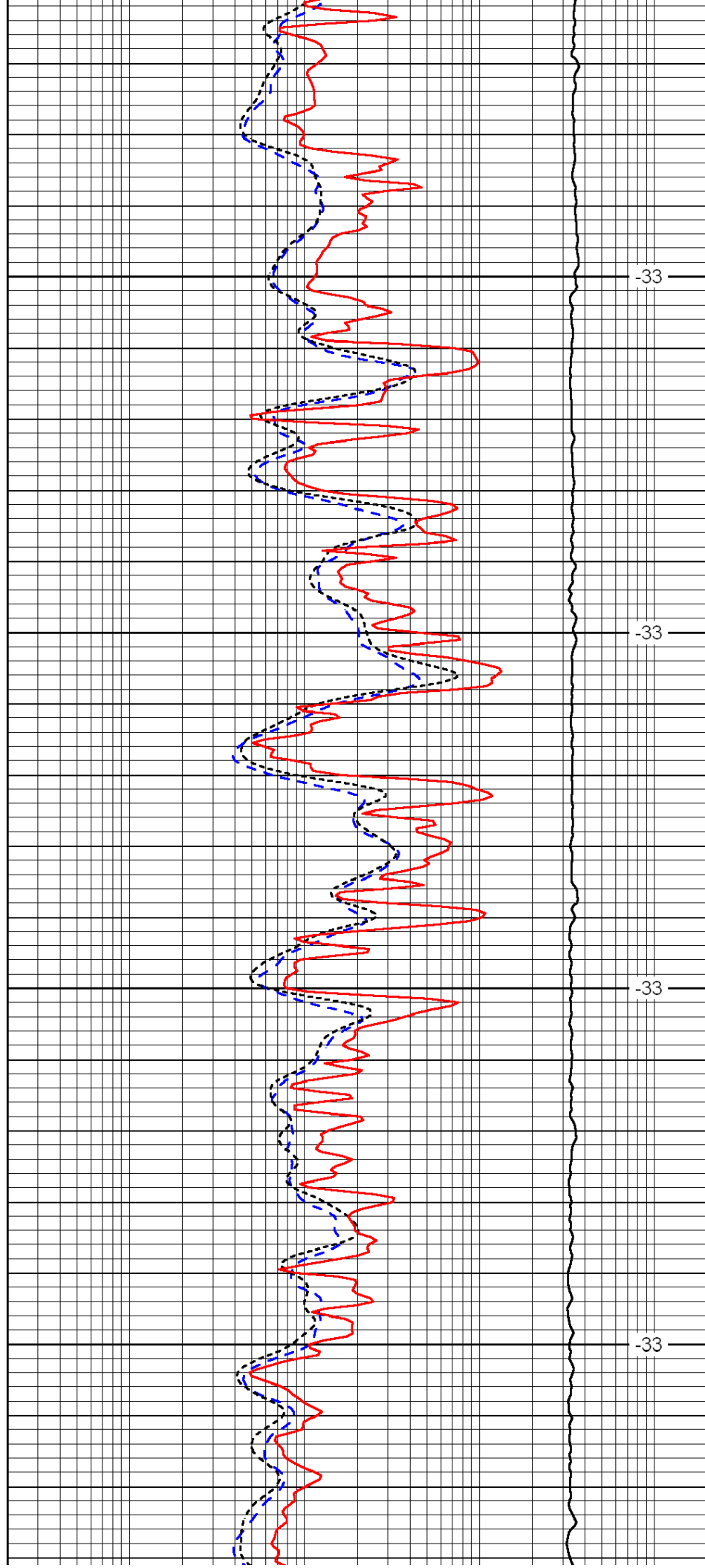


4550

4600

4650

4700

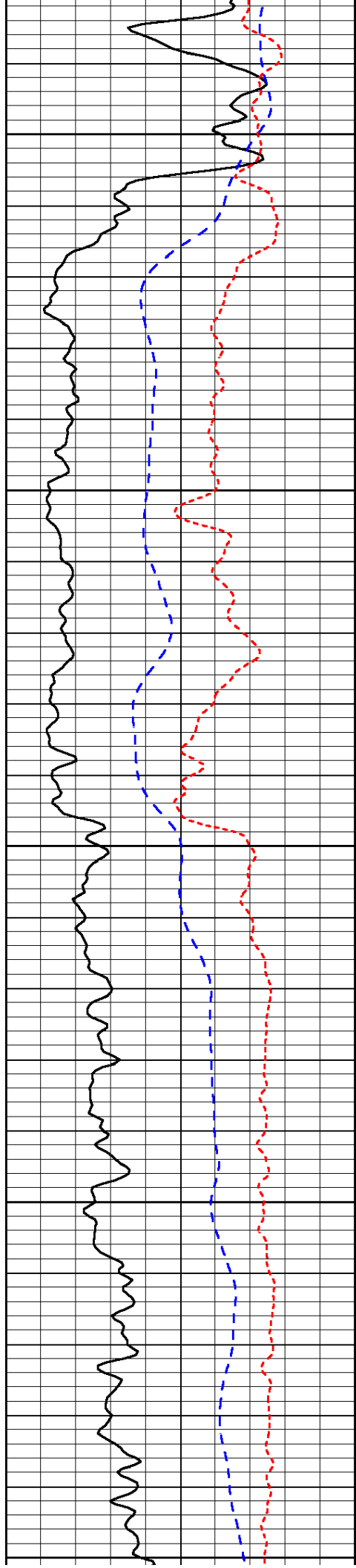


-33

-33

-33

-33



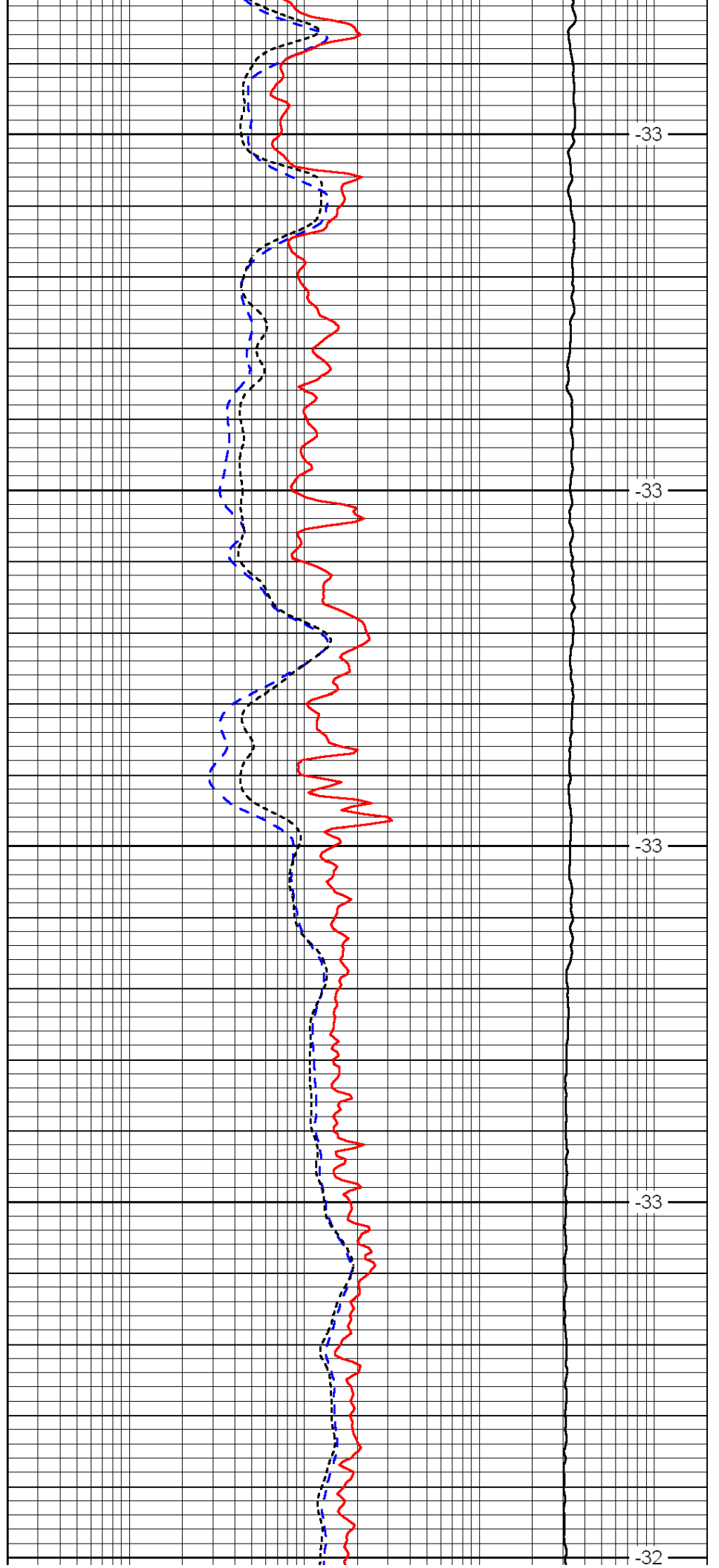
4750

4800

4850

4900

4950



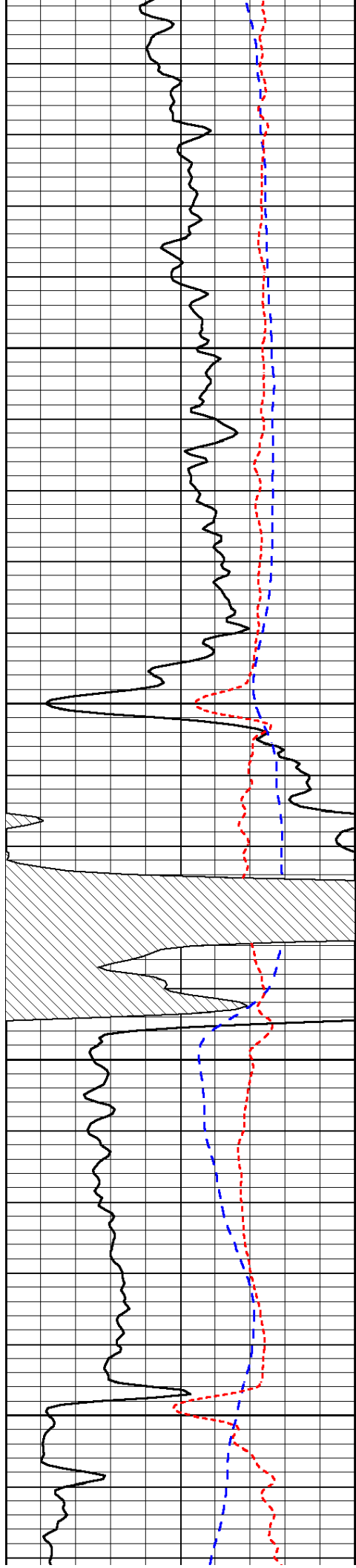
-33

-33

-33

-33

-32

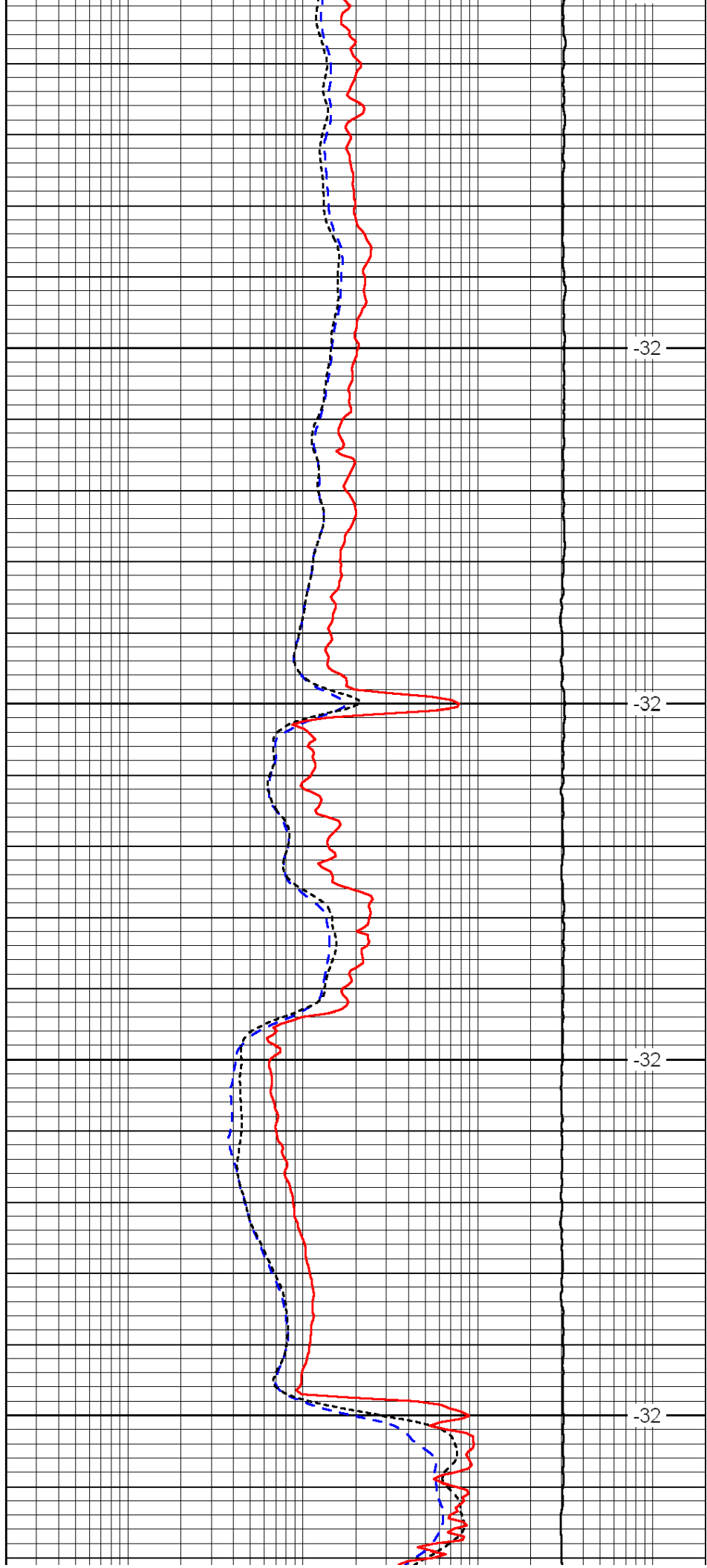


5000

5050

5100

5150

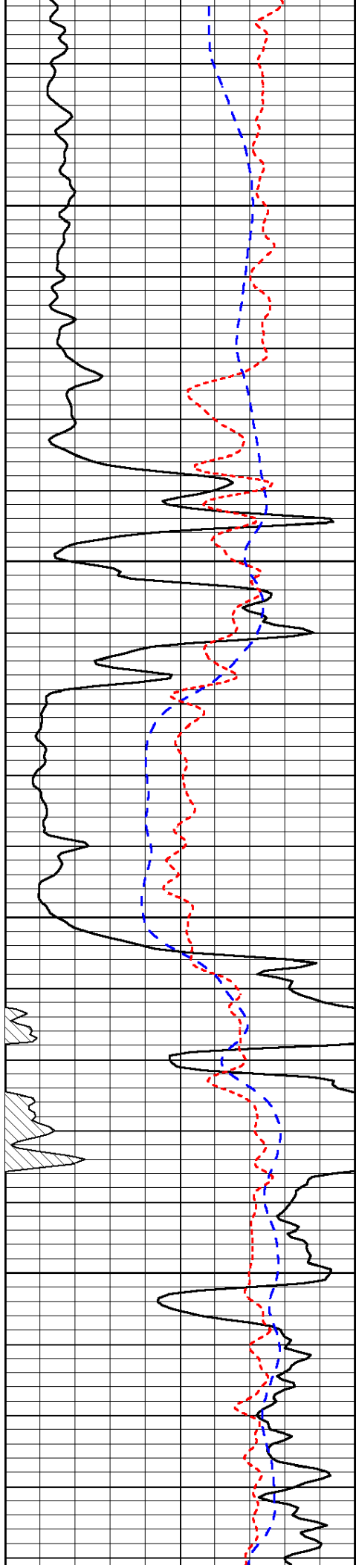


-32

-32

-32

-32

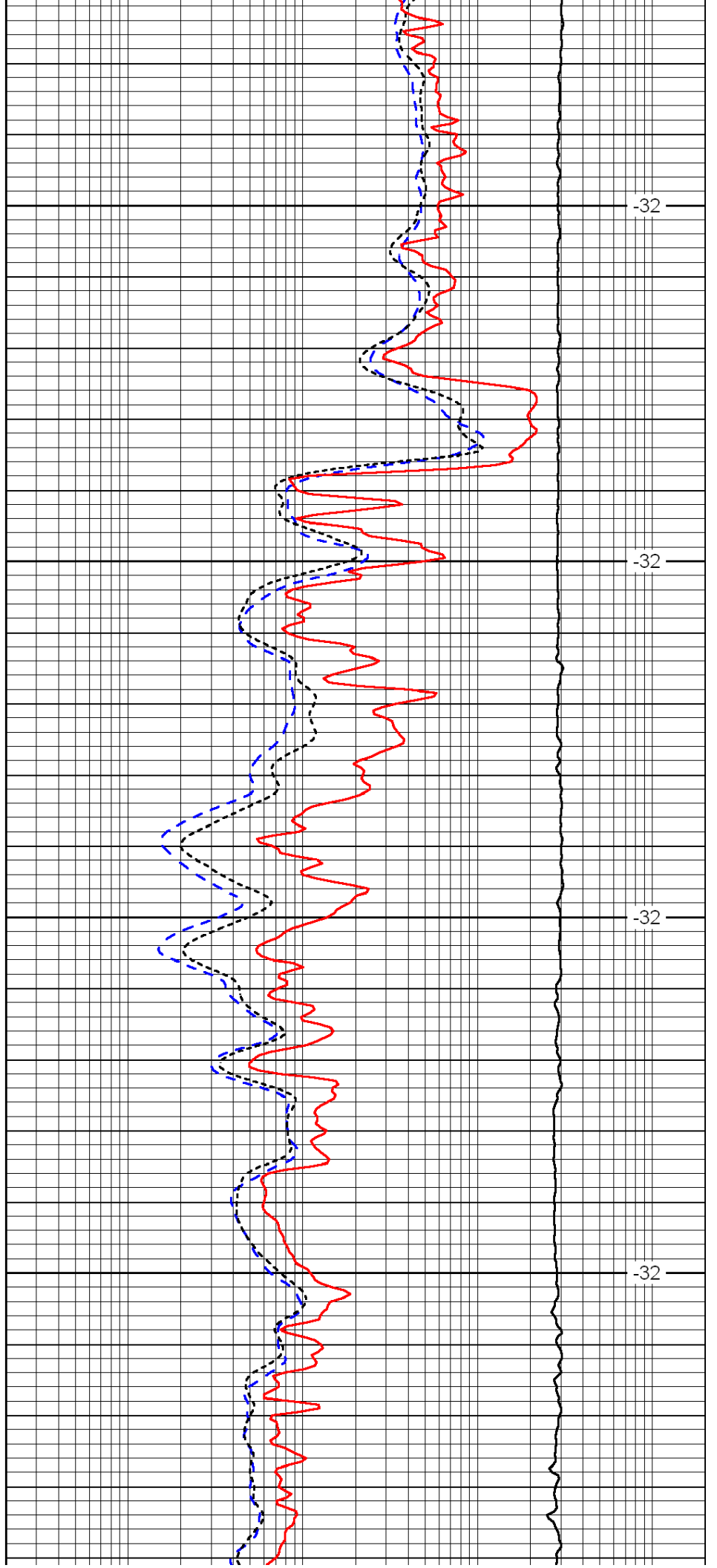


5200

5250

5300

5350

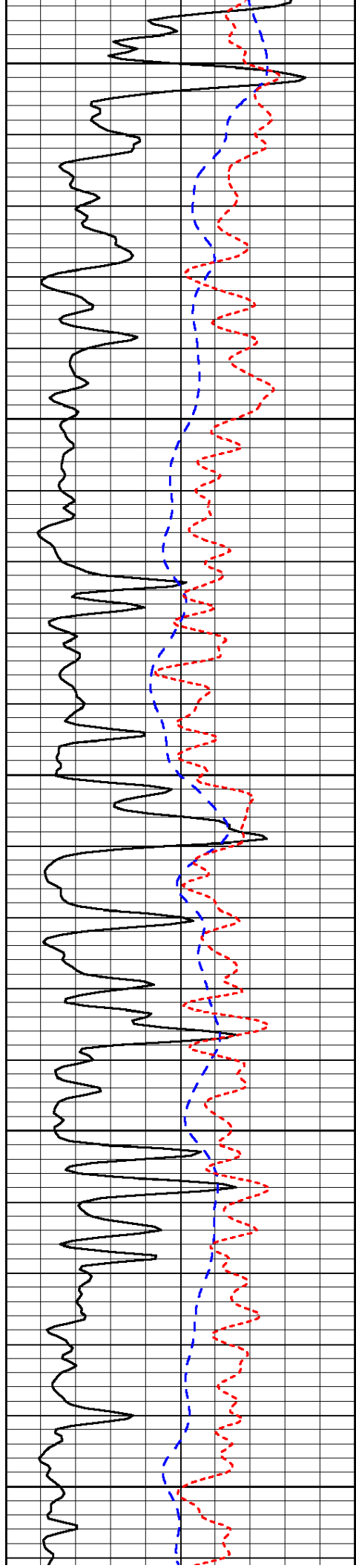


-32

-32

-32

-32



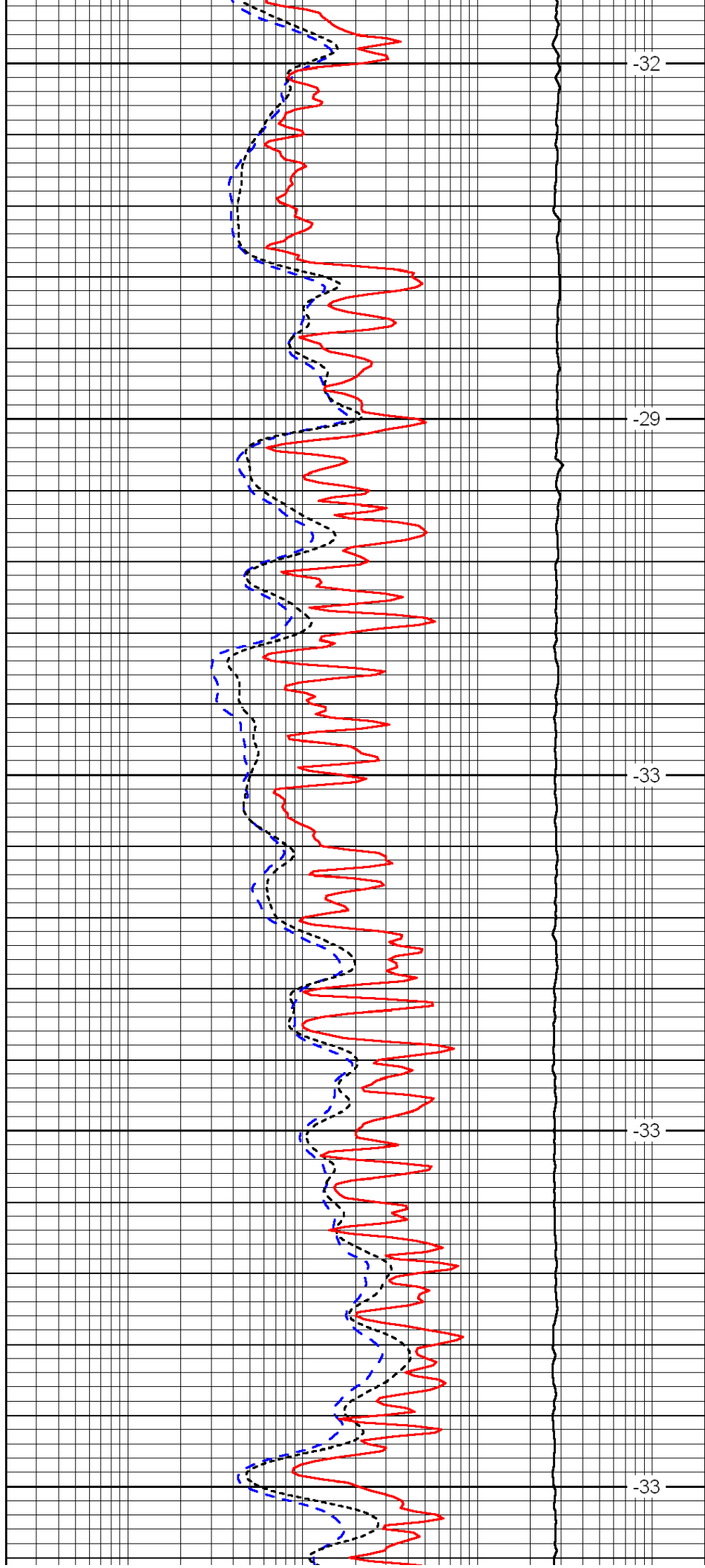
5400

5450

5500

5550

5600



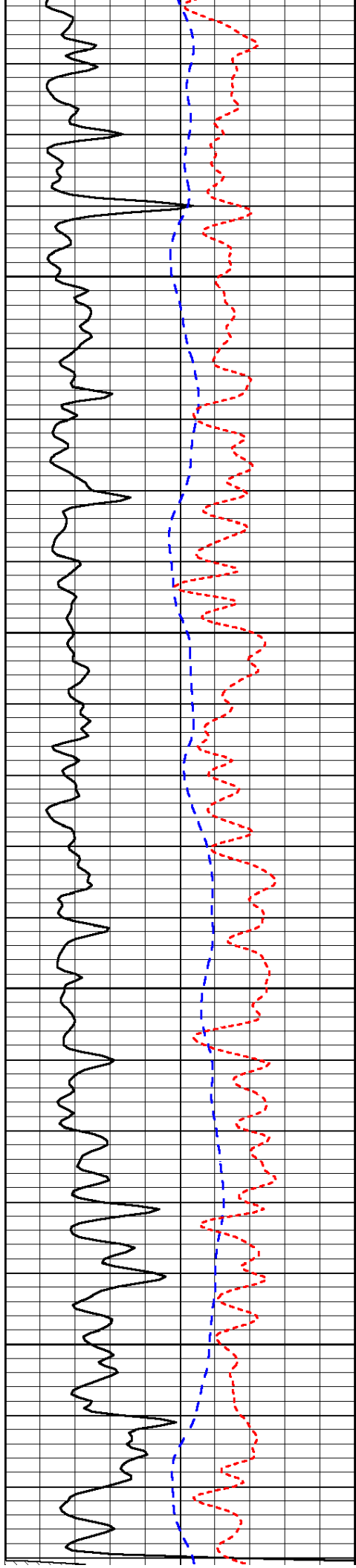
-32

-29

-33

-33

-33

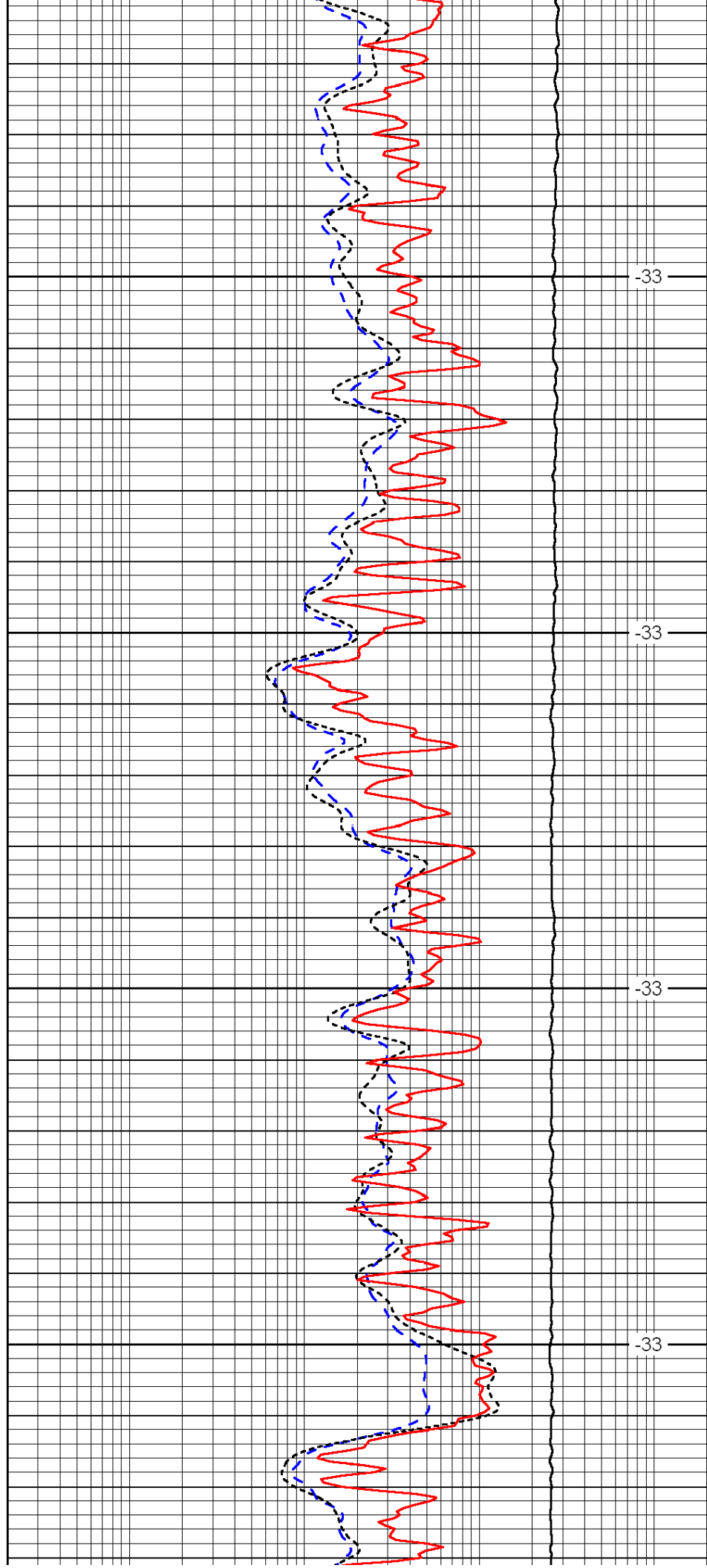


5650

5700

5750

5800

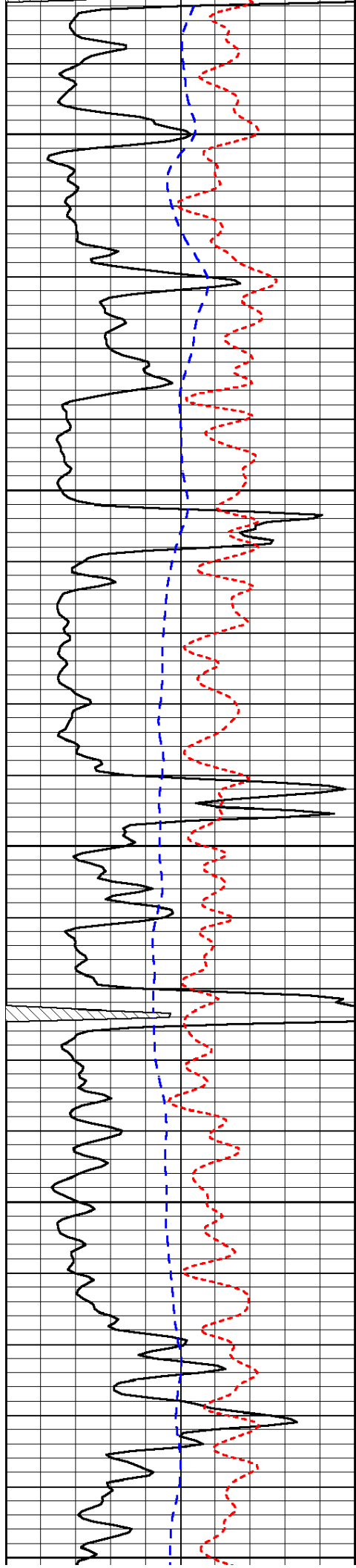


-33

-33

-33

-33



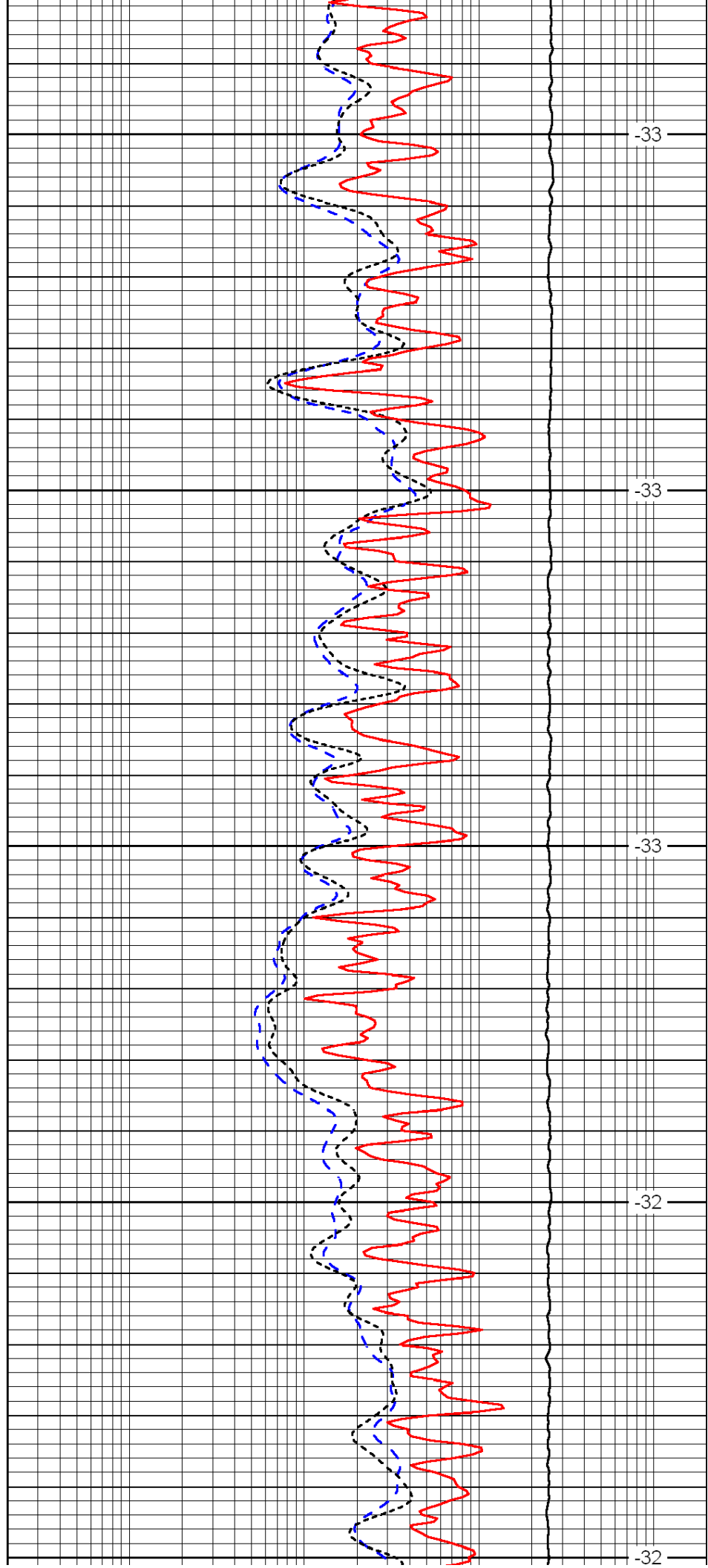
5850

5900

5950

6000

6050



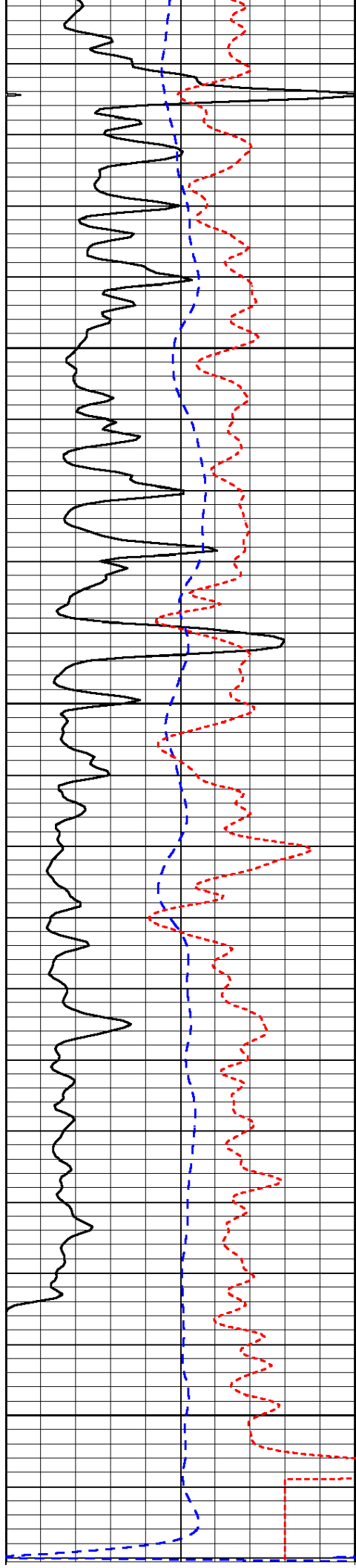
-33

-33

-33

-32

-32

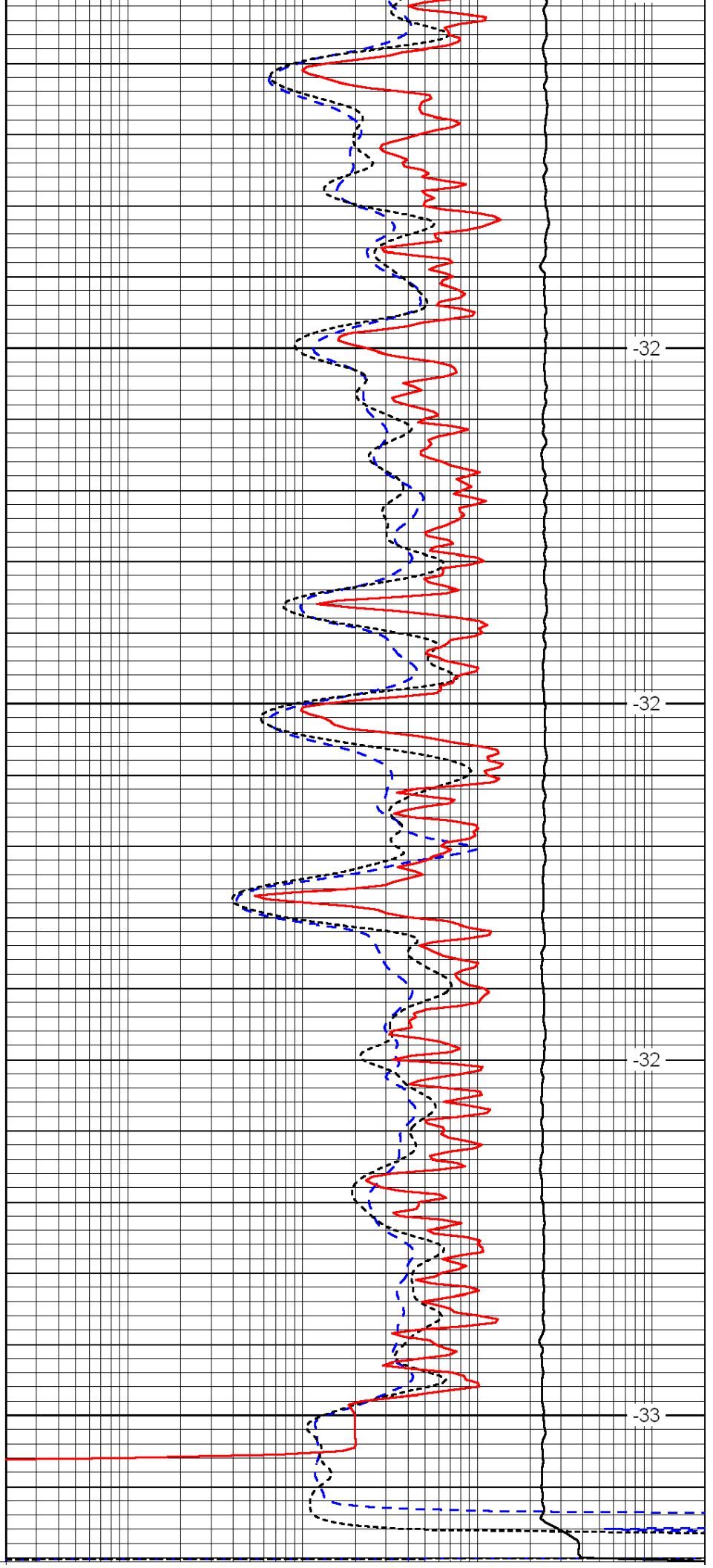


6100

6150

6200

6250



-32

-32

-32

-33

0	Gamma Ray	150
-200	SP (mV)	0
-160	Rxo / Rt	40

0.2	Deep Resistivity	2000
0.2	Medium Resistivity	2000
0.2	Shallow Resistivity	2000
15000	Line Tension	0
		LSPD