



SUPERIOR
Hays,
Kansas

MICRO
LOG

Company CHARTER ENERGY, INC.
Well DIRKS #1
Field PAWNEE ROCK
County PAWNEE
State KANSAS

Company CHARTER ENERGY, INC.
Well DIRKS #1
Field PAWNEE ROCK
County PAWNEE State KANSAS

Location: API # : 15-145-21671-0000
400' FSL & 355' FWL
NE - SW - SW - SW
SEC 23 TWP 20S RGE 16W
Permanent Datum GROUND LEVEL Elevation 2024
Log Measured From KELLY BUSHING 7' A.G.L.
Drilling Measured From KELLY BUSHING
Other Services
CDL/CNL
DIL
Elevation
K.B. 2031
D.F. 2029
G.L. 2024

Date	5/29/12
Run Number	TWO
Depth Driller	3900
Depth Logger	3898
Bottom Logged Interval	3896
Top Log Interval	3200
Casing Driller	8 5/8"@1038'
Casing Logger	1038
Bit Size	7 7/8"
Type Fluid in Hole	CHEMICAL MUD
Density / Viscosity	9.160
pH / Fluid Loss	8.5/11.2
Source of Sample	FLOWLINE
Rm @ Meas. Temp	.600@80F
Rmt @ Meas. Temp	.450@80F
Rmc @ Meas. Temp	.720@80F
Source of Rmf / Rmc	MEASUREMENT
Rm @ BHT	.417@115F
Time Circulation Stopped	3.5 HOURS
Time Logger on Bottom	5:00 P.M.
Maximum Recorded Temperature	115F
Equipment Number	4010
Location	HAYS, KANSAS
Recorded By	JEFF LUEBBERS
Witnessed By	JIM MUSGROVE

<<< Fold Here >>>

All interpretations are opinions based on inferences from electrical or other measurements and we cannot and do not guarantee the accuracy or correctness of any interpretation, and we shall not, except in the case of gross or willful negligence on our part, be liable or responsible for any loss, costs, damages, or expenses incurred or sustained by anyone resulting from any interpretation made by any of our officers, agents or employees. These interpretations are also subject to our general terms and conditions set out in our current Price Schedule.

Comments

THANK YOU FOR USING SUPERIOR WELL SERVICE HAYS, KANSAS (785) 628-6395
DIRECTIONS
PAWNEE ROCK, KS. 4N. ON BLKTOP "RD. SW 110" TO MENNONITE CHURCH, 5W., 2S., E. INTO

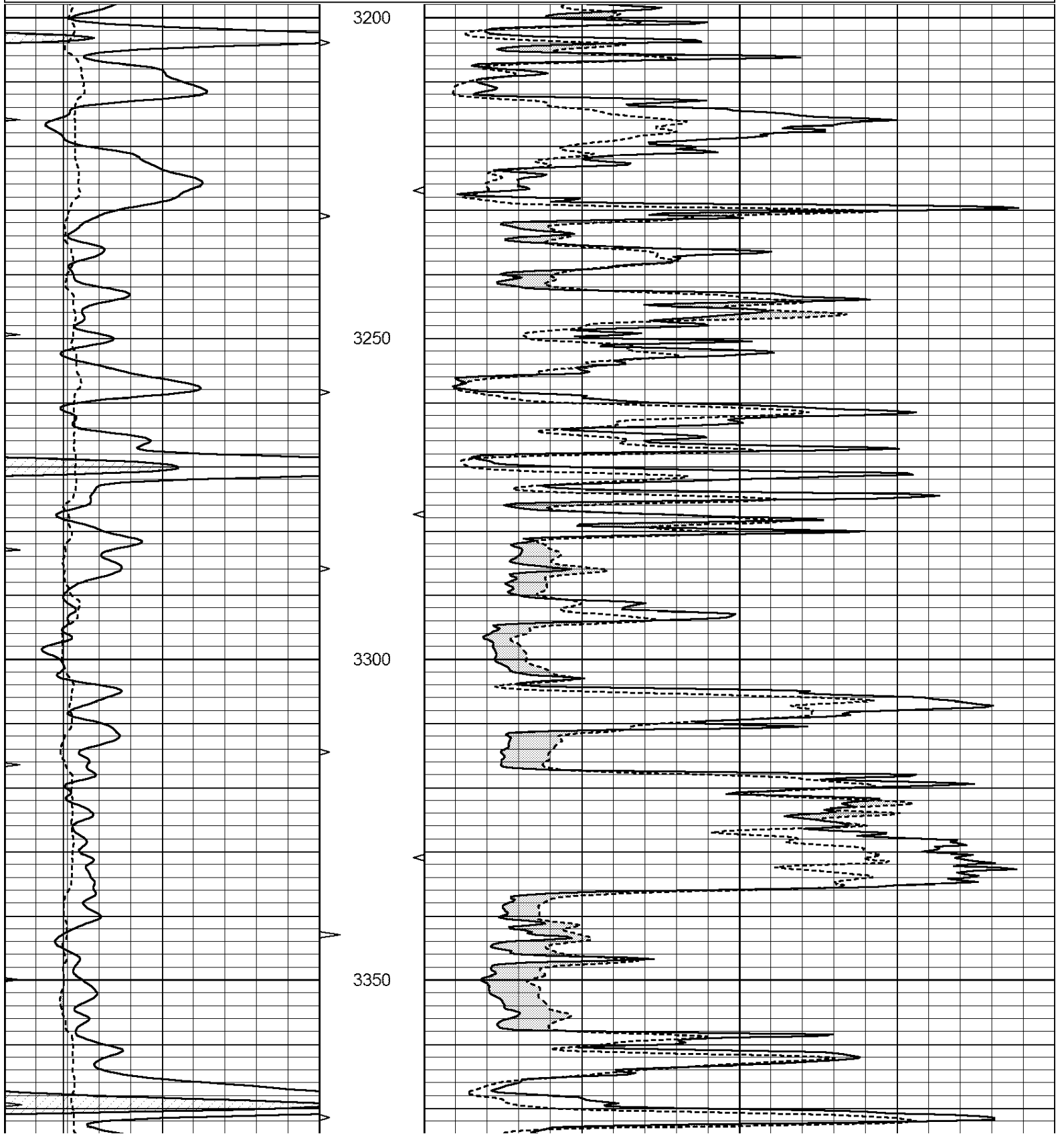


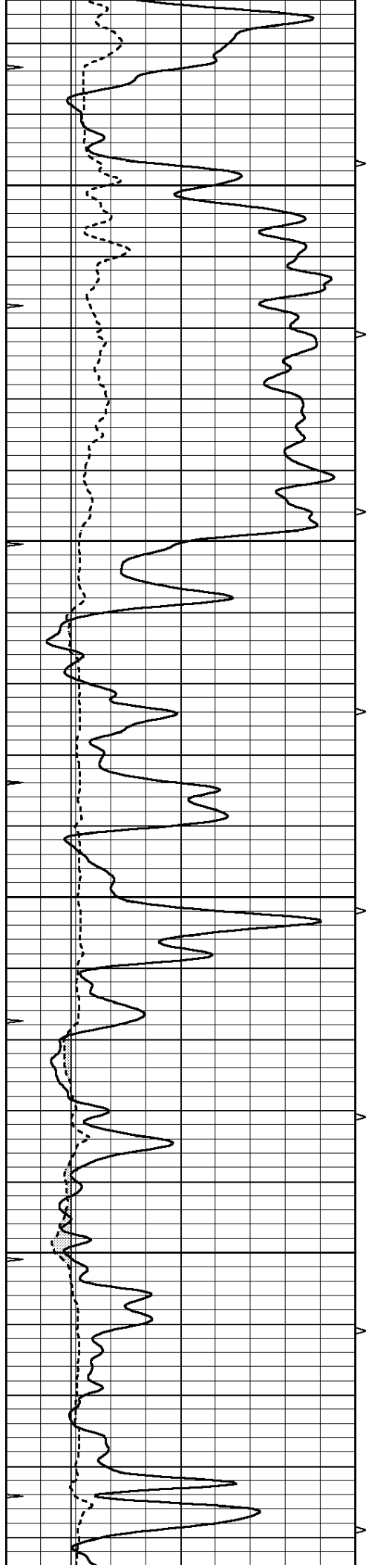
SUPERIOR
Hays,
Kansas

MAIN SECTION

Database File: 409128ddn.db
 Dataset Pathname: pass7.1
 Presentation Format: micro
 Dataset Creation: Tue May 29 19:46:20 2012 by Calc Open-Cased 110302
 Charted by: Depth in Feet scaled 1:240

0	GAMMA RAY (GAPI)	150	ABHV	0	MEL1.5 (Ohm-m)	40
6	CALIPER (in)	16	10 (ft3)	0	MEL2.0 (Ohm-m)	40
0	MINMK	20	TBHV			
			0 (ft3)	10		



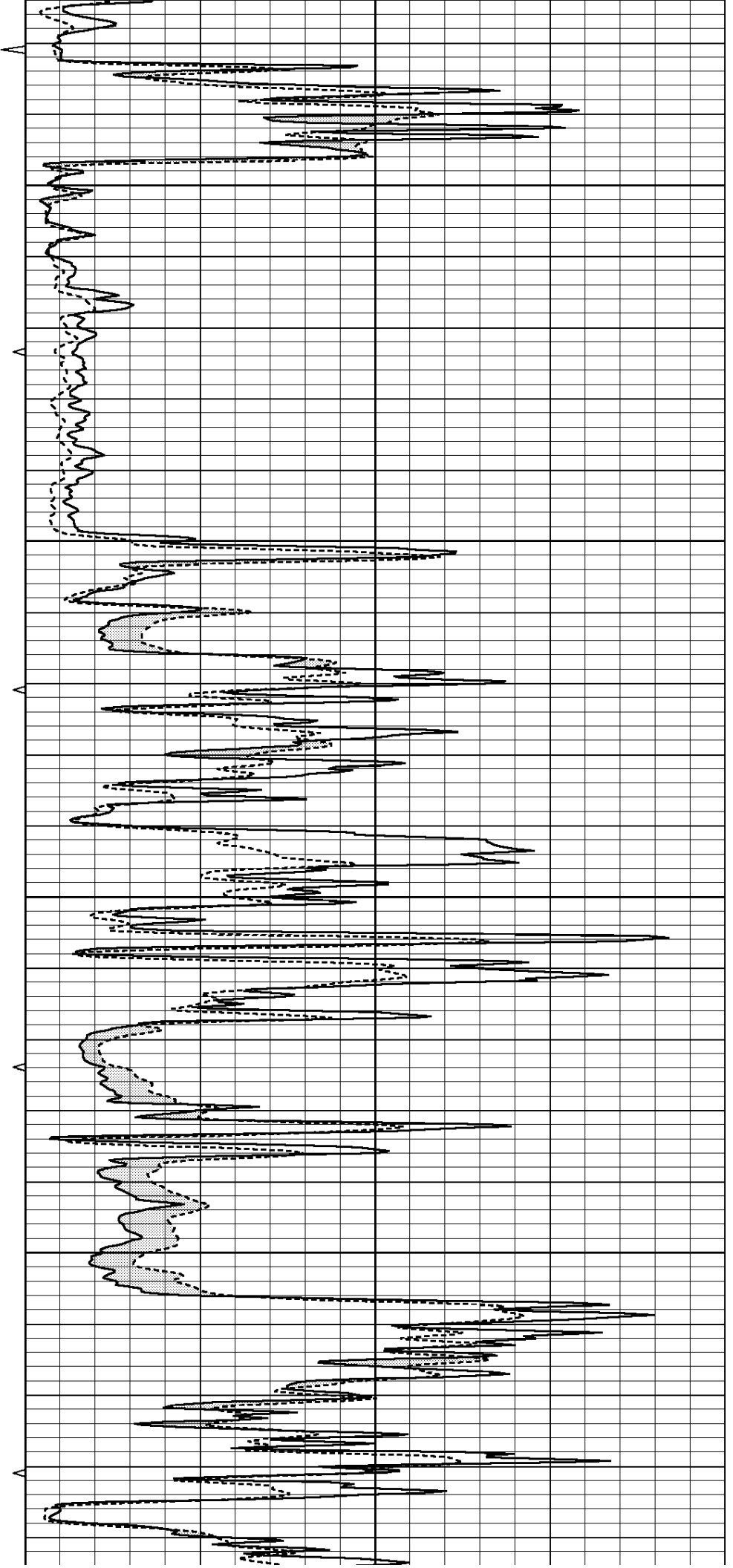


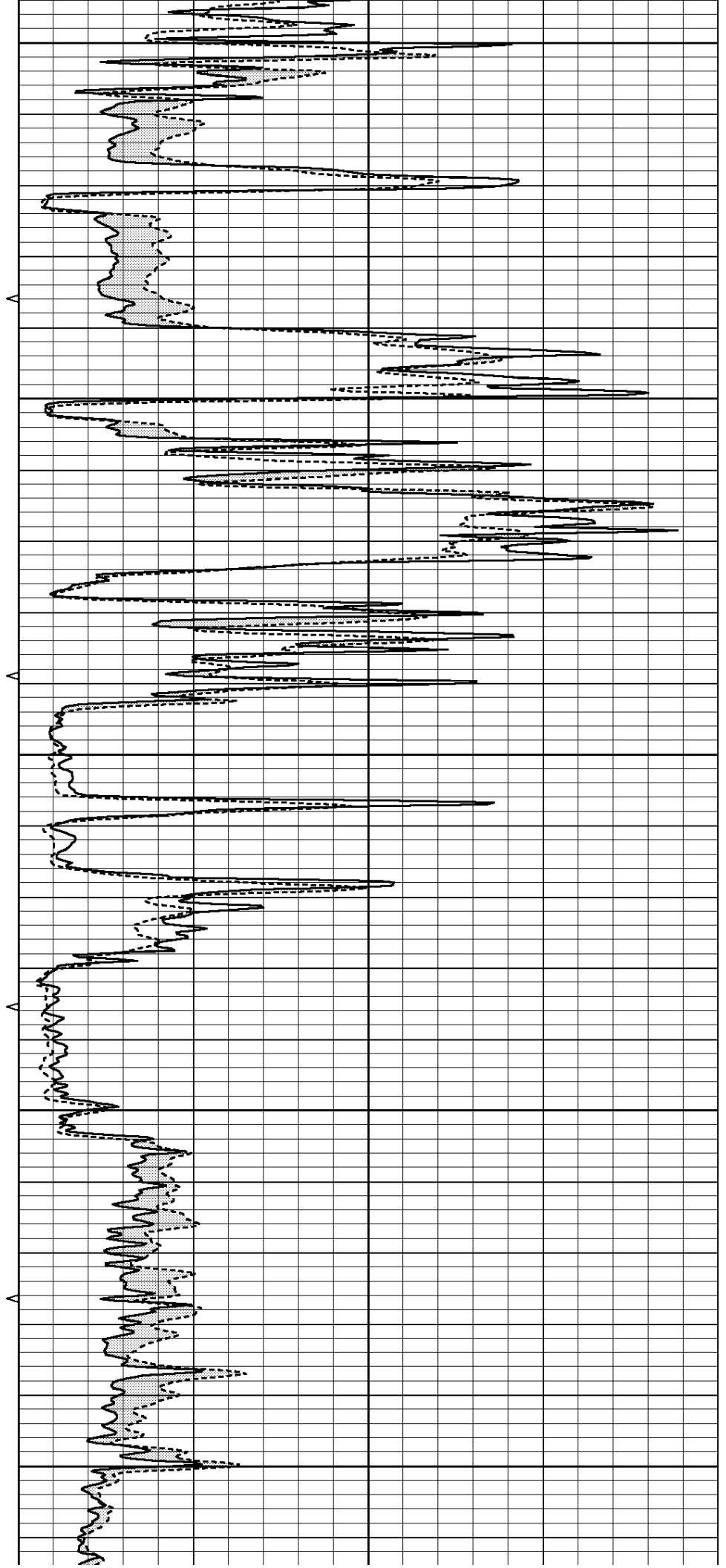
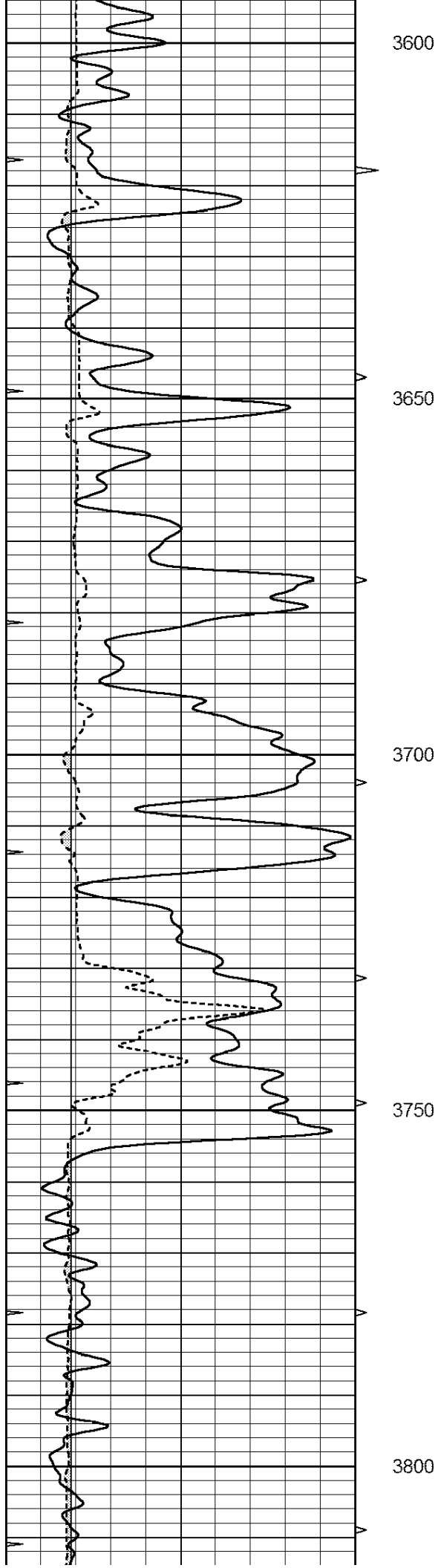
3400

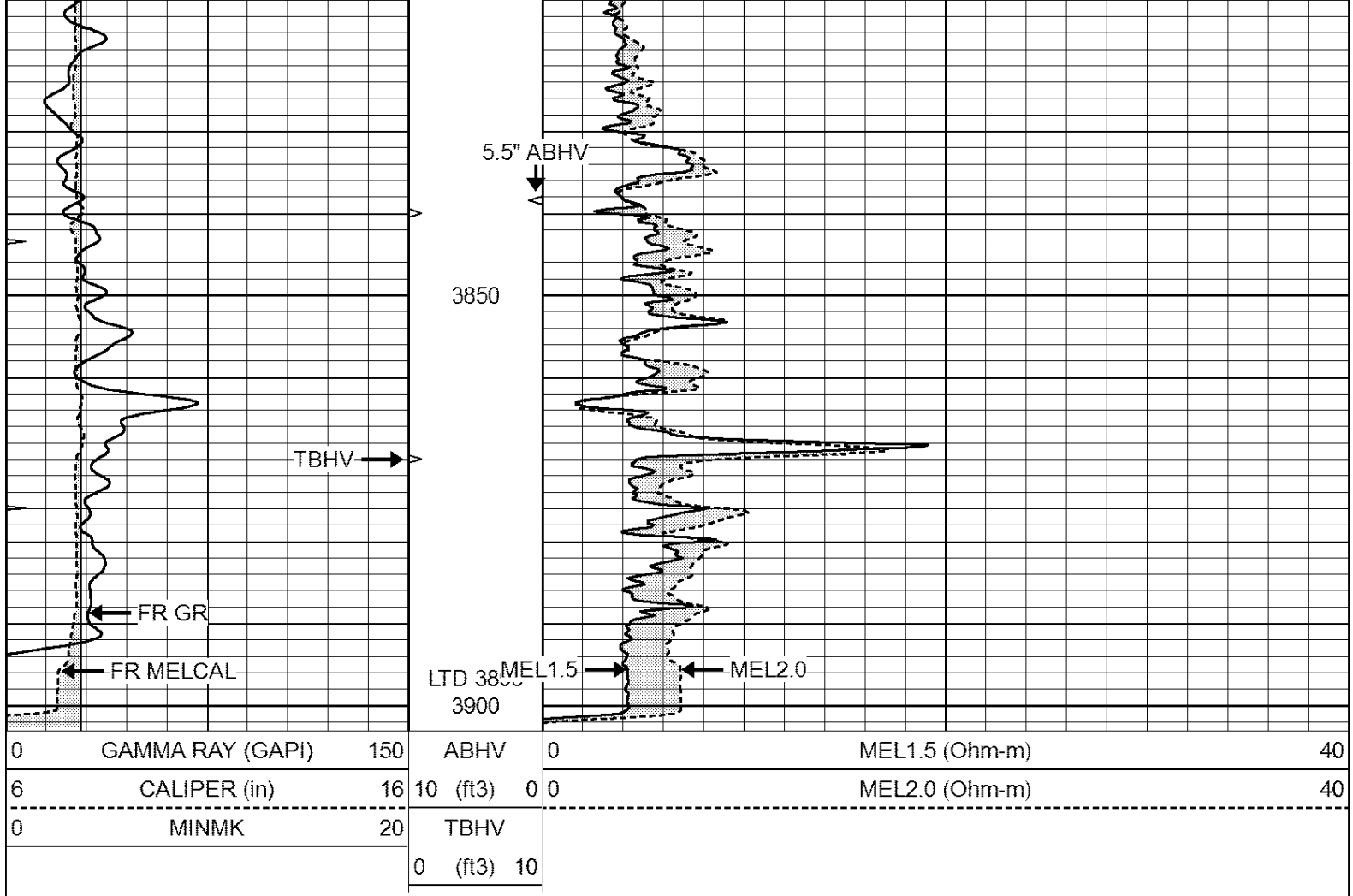
3450

3500

3550





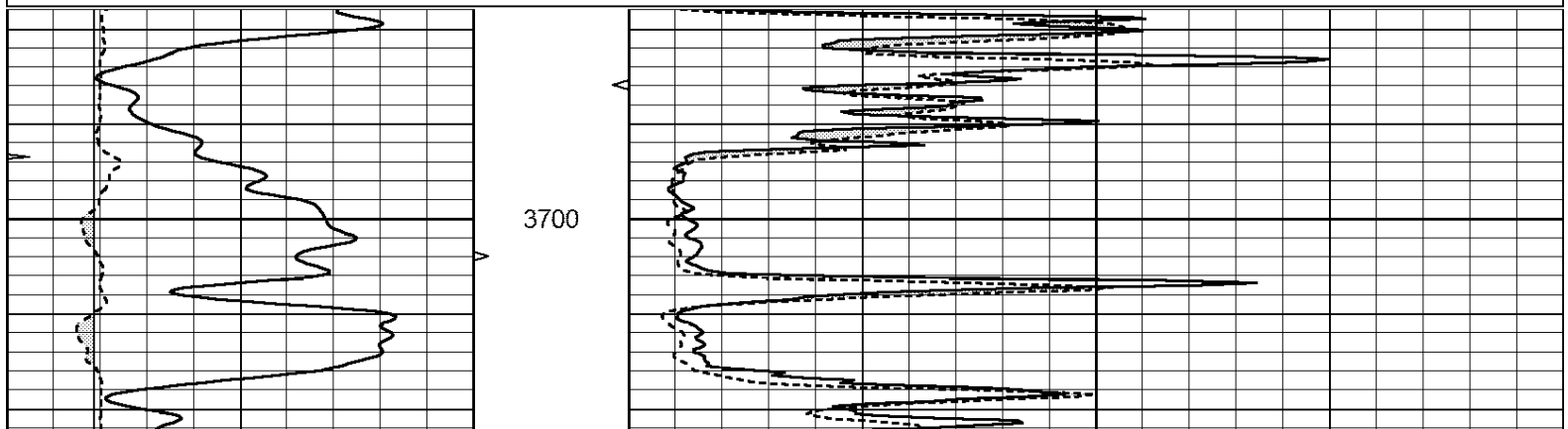


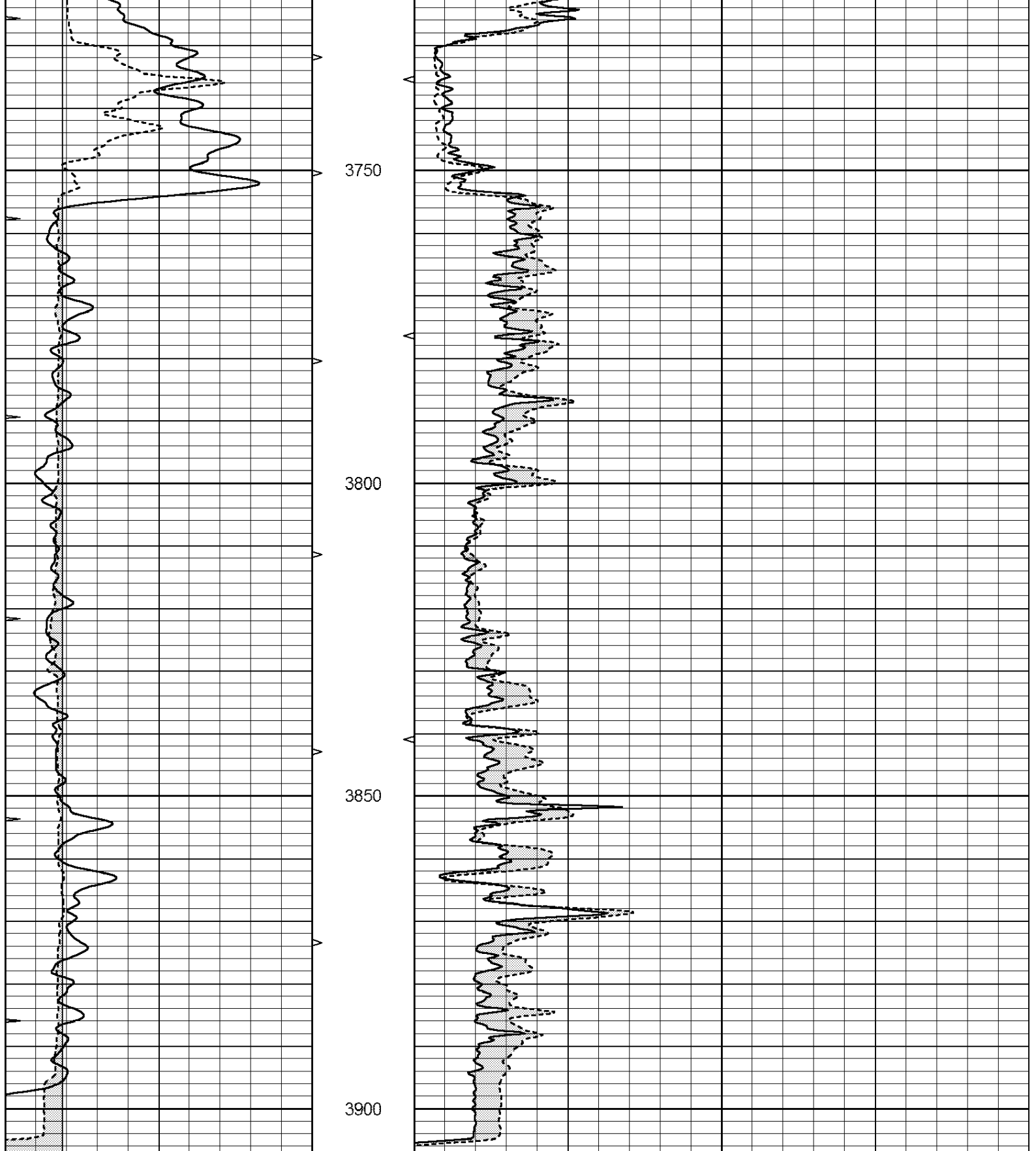
SUPERIOR
Hays,
Kansas

REPEAT SECTION

Database File: 409128ddn.db
 Dataset Pathname: pass6.4
 Presentation Format: micro
 Dataset Creation: Tue May 29 19:36:54 2012 by Calc Open-Cased 110302
 Charted by: Depth in Feet scaled 1:240

0	GAMMA RAY (GAPI)	150	ABHV	0	MEL1.5 (Ohm-m)	40
6	CALIPER (in)	16	10 (ft3)	0	MEL2.0 (Ohm-m)	40
0	MINMK	20	TBHV			
			0 (ft3)	10		





0	GAMMA RAY (GAPI)	150	ABHV	0	MEL1.5 (Ohm-m)	40
6	CALIPER (in)	16	10 (ft3)	0	MEL2.0 (Ohm-m)	40
0	MINMK	20	TBHV			
			0 (ft3)	10		

Calibration Report

Database File: 409128ddn.db
 Dataset Pathname: nace7 1

MICRO Calibration Report

Serial Number: 2
 Tool Model: PROBE
 Performed: Tue May 29 19:22:25 2012

Caliper Calibration: Gain=4.105 Offset=3.360

 References Low Cal High Cal
 Readings 8.000 15.000
 1.130 2.835

1.5" Calibration: Gain=25.000 Offset=-0.700

 References Low Cal High Cal
 Readings 0.000 20.000
 0.065 1.210

2" Calibration: Gain=40.000 Offset=-0.800

 References Low Cal High Cal
 Readings 0.000 20.000
 0.012 1.043

Gamma Ray Calibration Report

Serial Number: GR4
 Tool Model: OPEN
 Performed: Tue May 29 19:22:22 2012

Calibrator Value: 200.0 GAPI

 Background Reading: 0.0 cps
 Calibrator Reading: 189.0 cps

 Sensitivity: 1.4500 GAPI/cps