



Sonic Cement
Bond Log

API No.

15-159-22670-00-00

Company **Hawkins Oil LLC**
Well **Sledd B-7**
Field **Chase-Sillica**
County **Rice** State **Kansas**

Location **15' W of CW/2-SW/4-NW/4-SW-4
1650' FSL & 150' FWL**

Other Services
Perforate

Sec: **27** Twp: **19 S** Rge: **9 W**

Elevation

Permanent Datum **Ground Level** Elevation **1684**
Log Measured From **Kelly Bushing** 10' Ft. Above Perm. Datum
Drilling Measured From **Kelly Bushing**

K.B. 1694
D.F.
G.L. 1684

Run Number	One	
Date Survey	12/19/2011	
Date Cementing	12/16/2011	
Type Cementing Operation	Primary	
Depth Driller	3213	
Depth Logger	3214	
Logged Interval	3214 to 2000	
Casing Driller	5.5" @ T.D.	@
Float Collar -- D.V. Tool	////	////
Squeeze Depth	////	
Amount & Type Cement	////	
Amount & Type Admix	////	
Type Fluid In Hole	Water	
Fluid Level	////	
Salinity PPM CL	////	
Weight lb/gal -- Vis.	////	////
Approx. Logged Cement Top	2200	
Calculated Cement Top	////	
Max. Hole Temperature	110	
Tool No.	RBT 4-4	
Spacing Recorded	3-5	
Equipment -- Location	14 Hays	
Recorded By	A Dreiling	
Witnessed By	Mr Jim Hawkins	

<<< Fold Here >>>

All interpretations are opinions based on inferences from electrical or other measurements and we cannot and do not guarantee the accuracy or correctness of any interpretation, and we shall not, except in the case of gross or willful negligence on our part, be liable or responsible for any loss, costs, damages, or expenses incurred or sustained by anyone resulting from any interpretation made by any of our officers, agents or employees. These interpretations are also subject to our general terms and conditions set out in our current Price Schedule.

Comments

Thank you for using Log-Tech, Inc.
(785) 625-3858

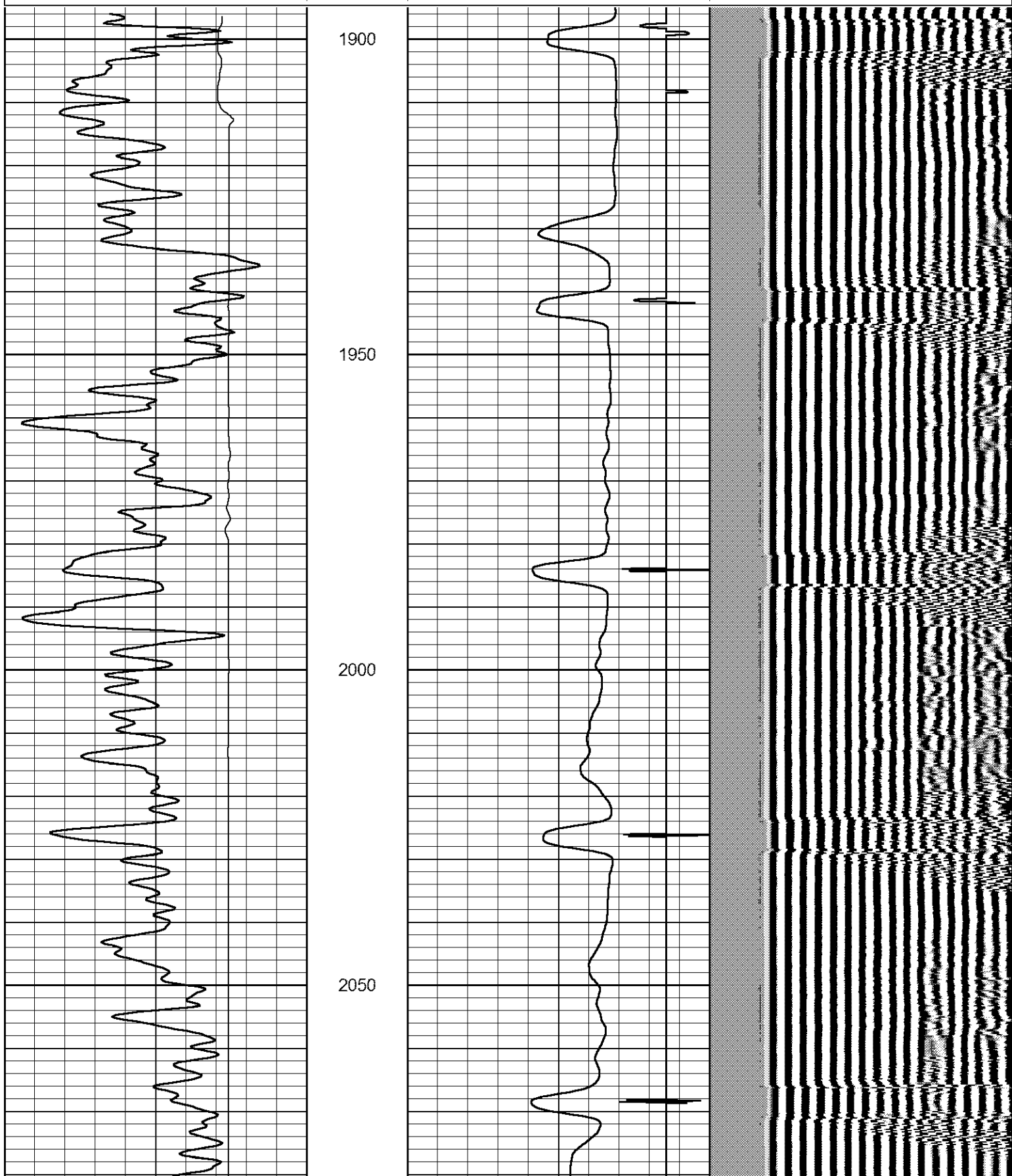
Chase Ks,
2 N to 10 Rd.,
1 1/8 N, E into

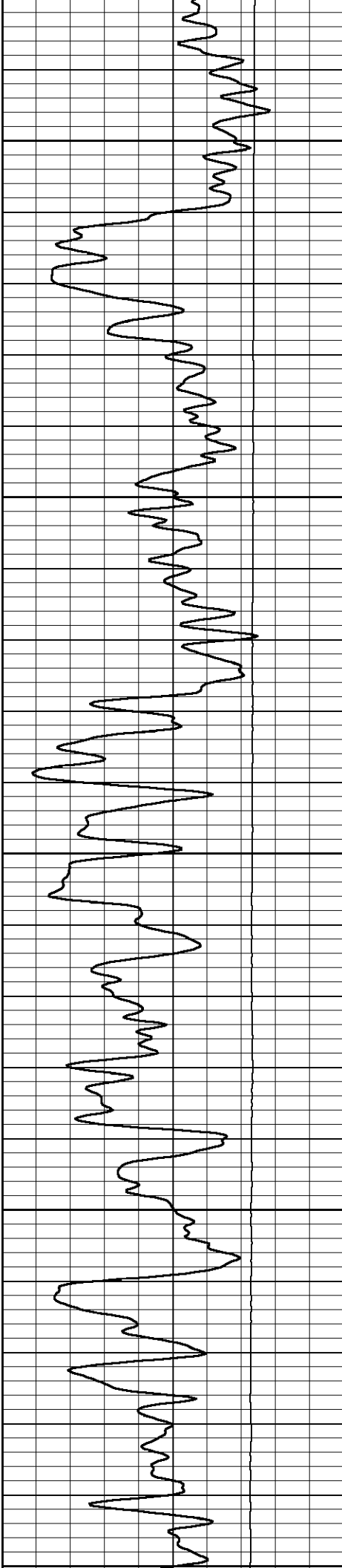


Main Pass

Database File: hawkins_sledd_b-7.db
 Dataset Pathname: sgrcbl/pass4.1
 Presentation Format: cblidr
 Dataset Creation: Mon Dec 19 14:25:22 2011 by Calc SCH 110223
 Charted by: Depth in Feet scaled 1:240

0	Gamma Ray	150	amp3ft	3	Casing Collars	-0.5	200	wvf5ft	1200
2000	LTEN (lb)	0	(mV)	0	Pipe Amplitude (mV)	100			
			-100	10	0	Amplified Amplitude (mV)	20		





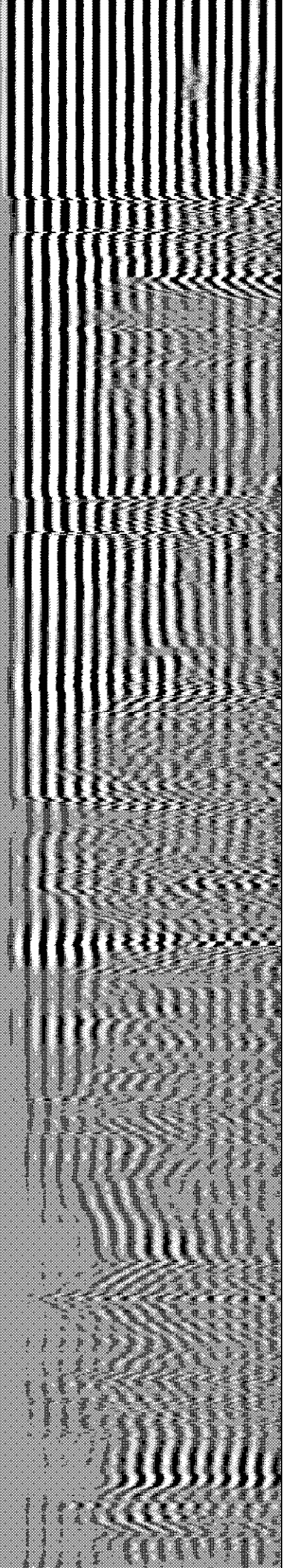
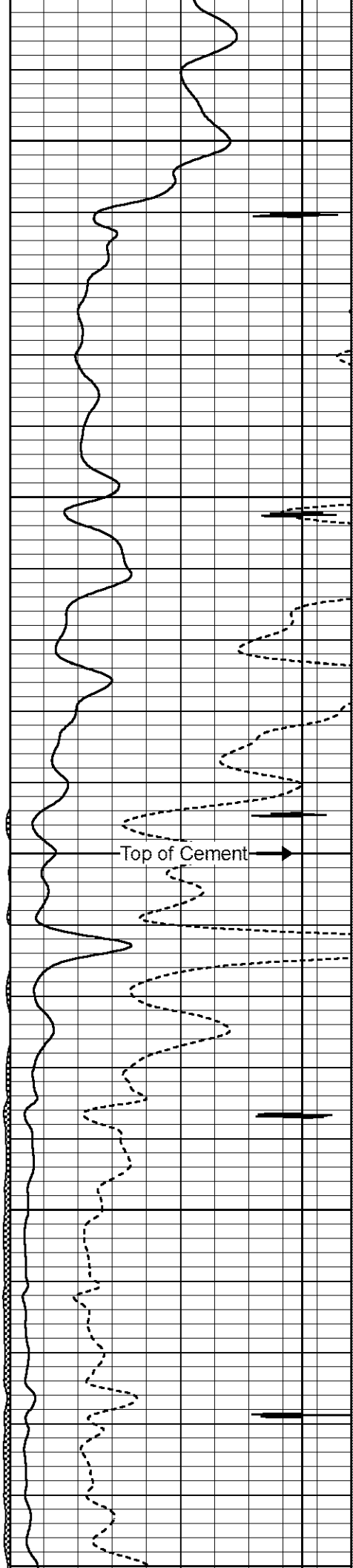
2100

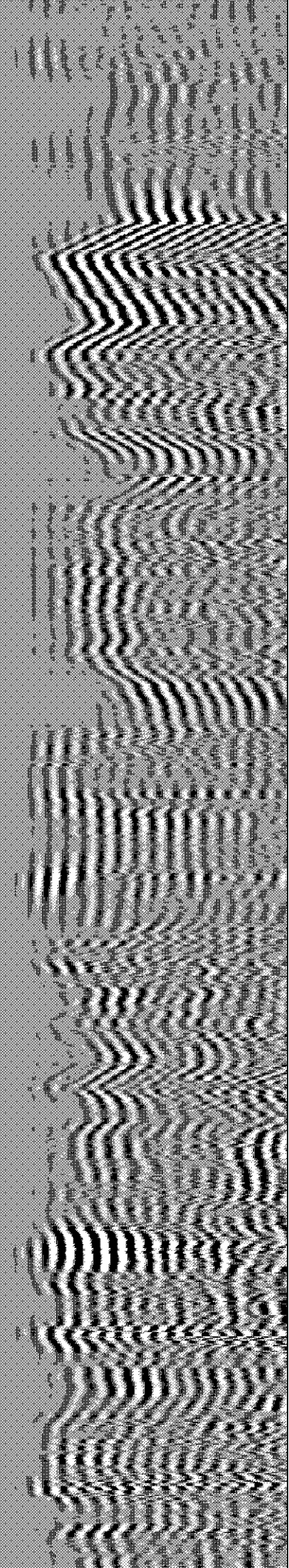
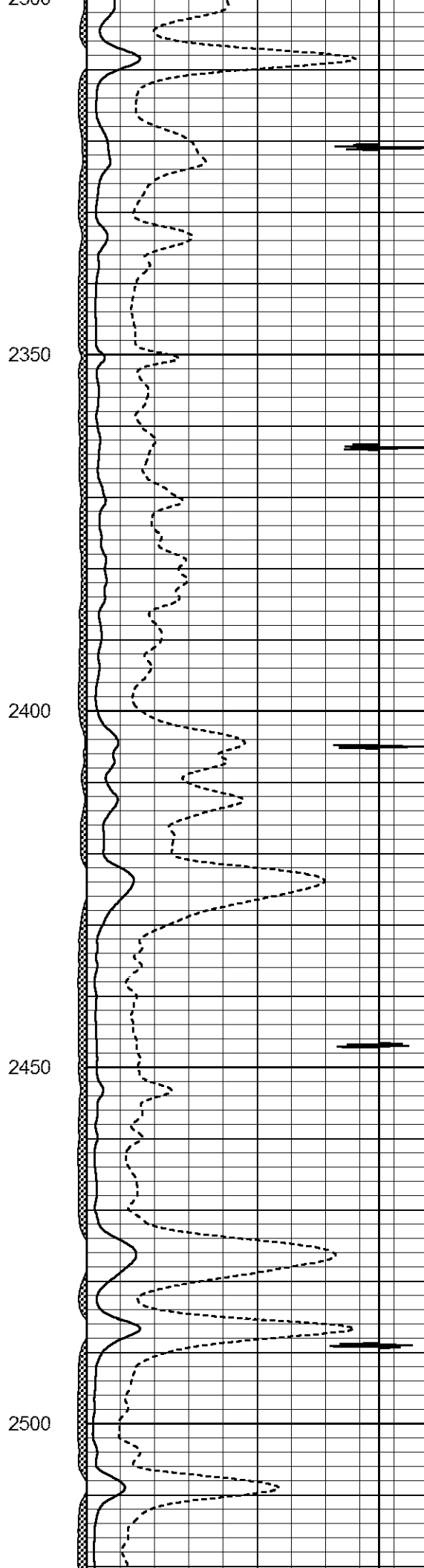
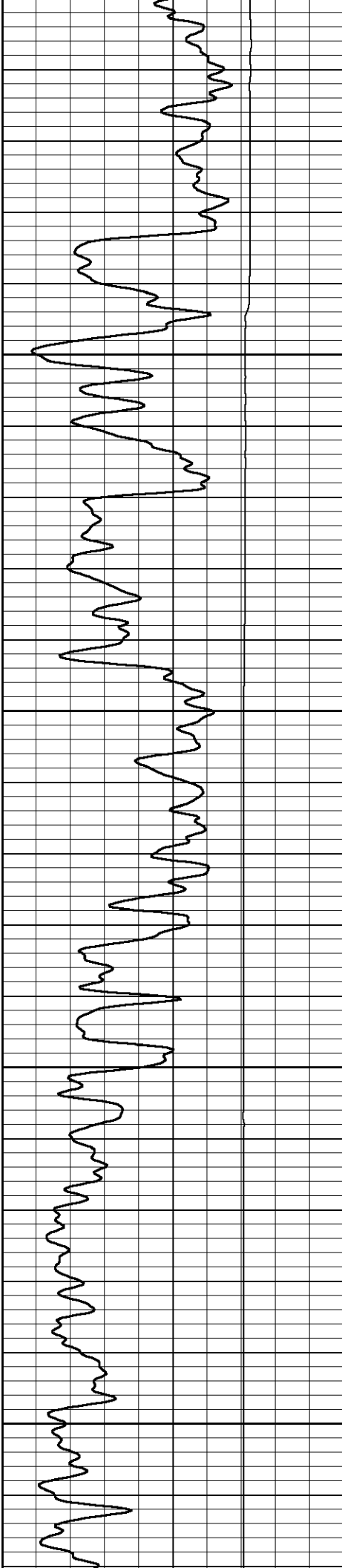
2150

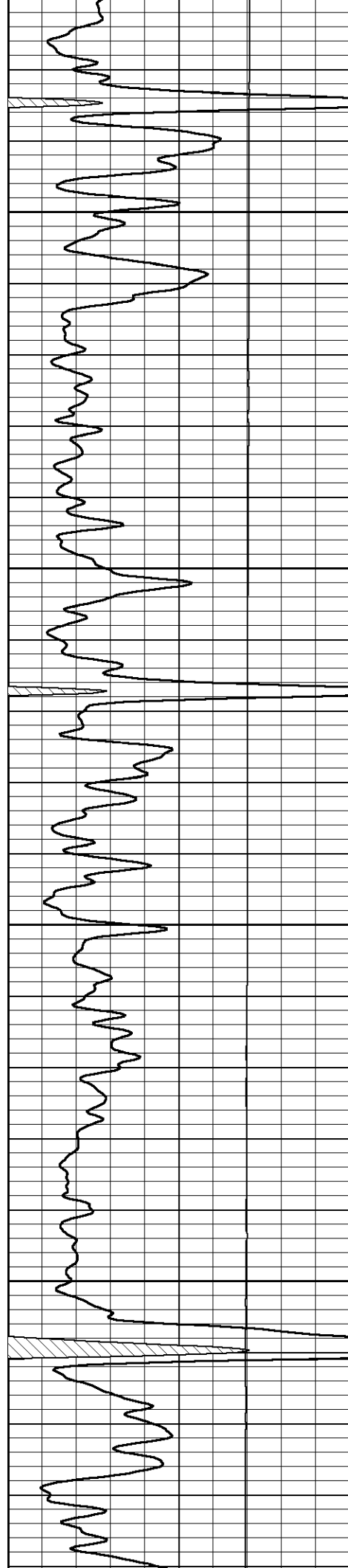
2200

2250

2300





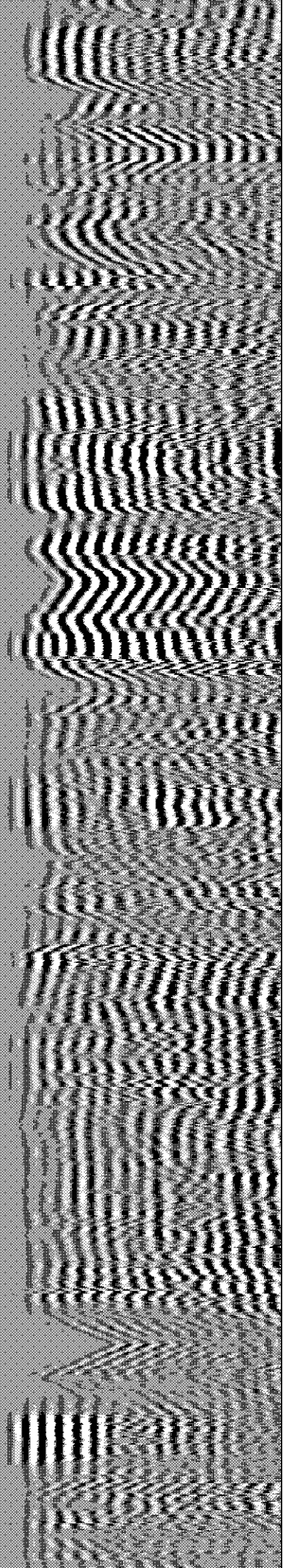
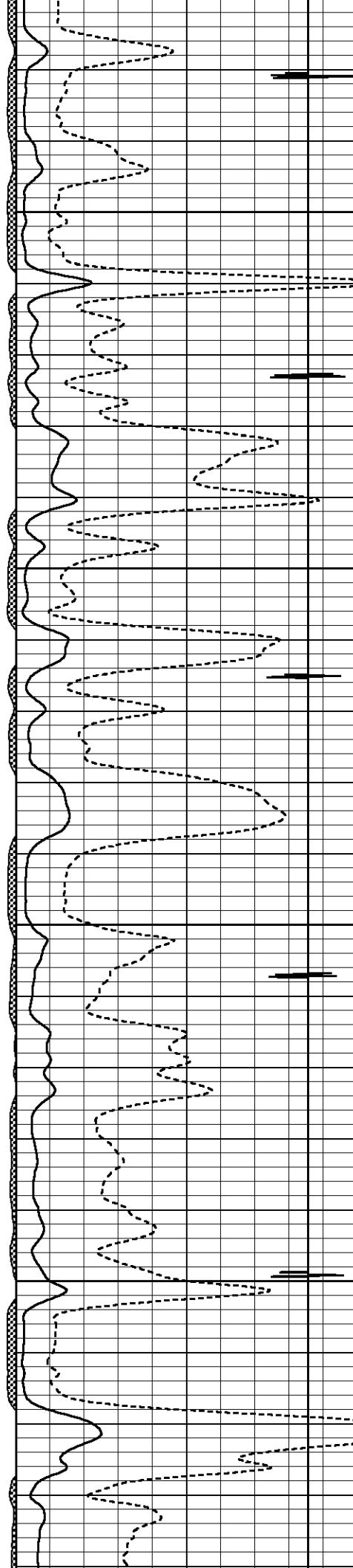


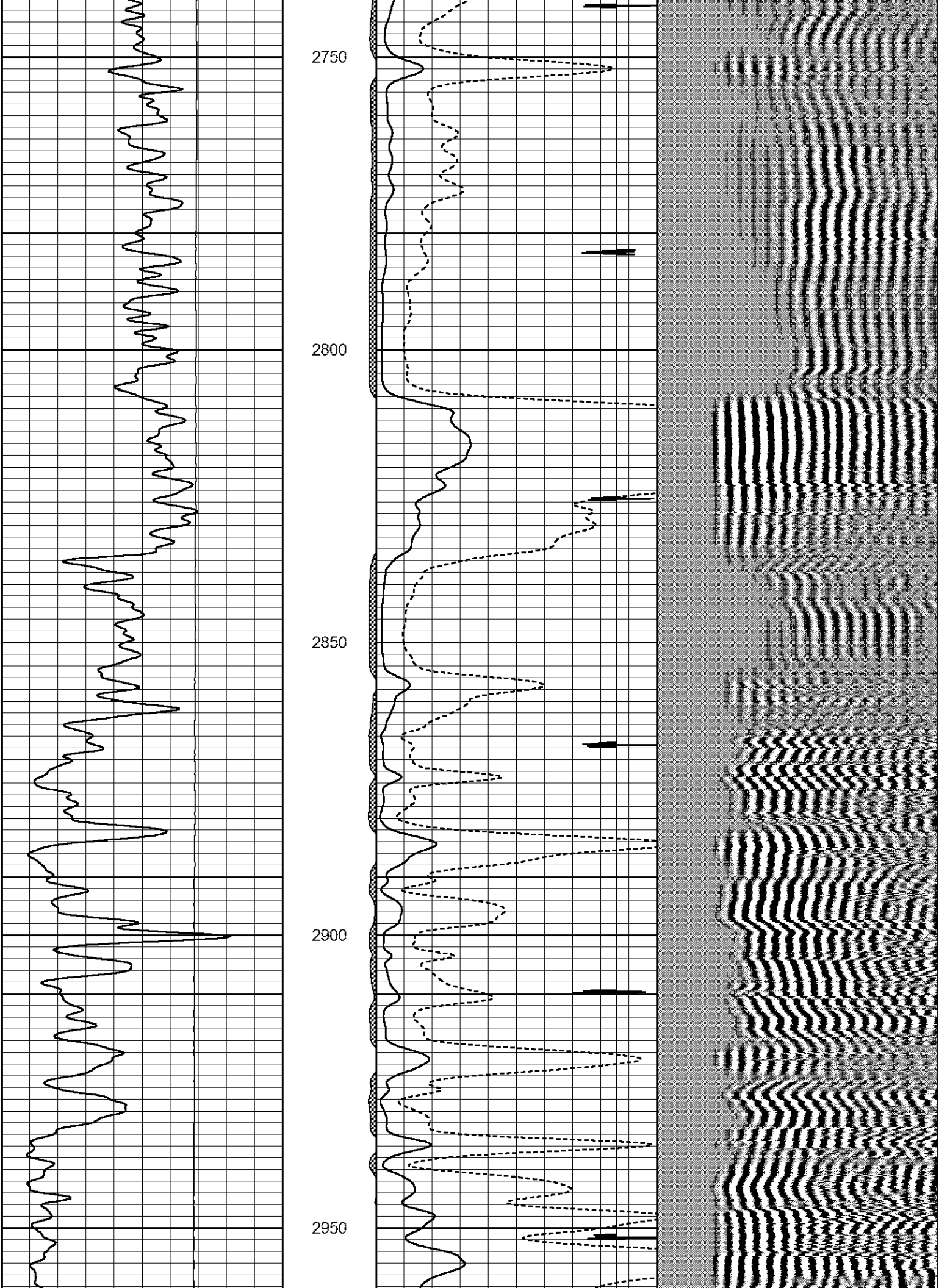
2550

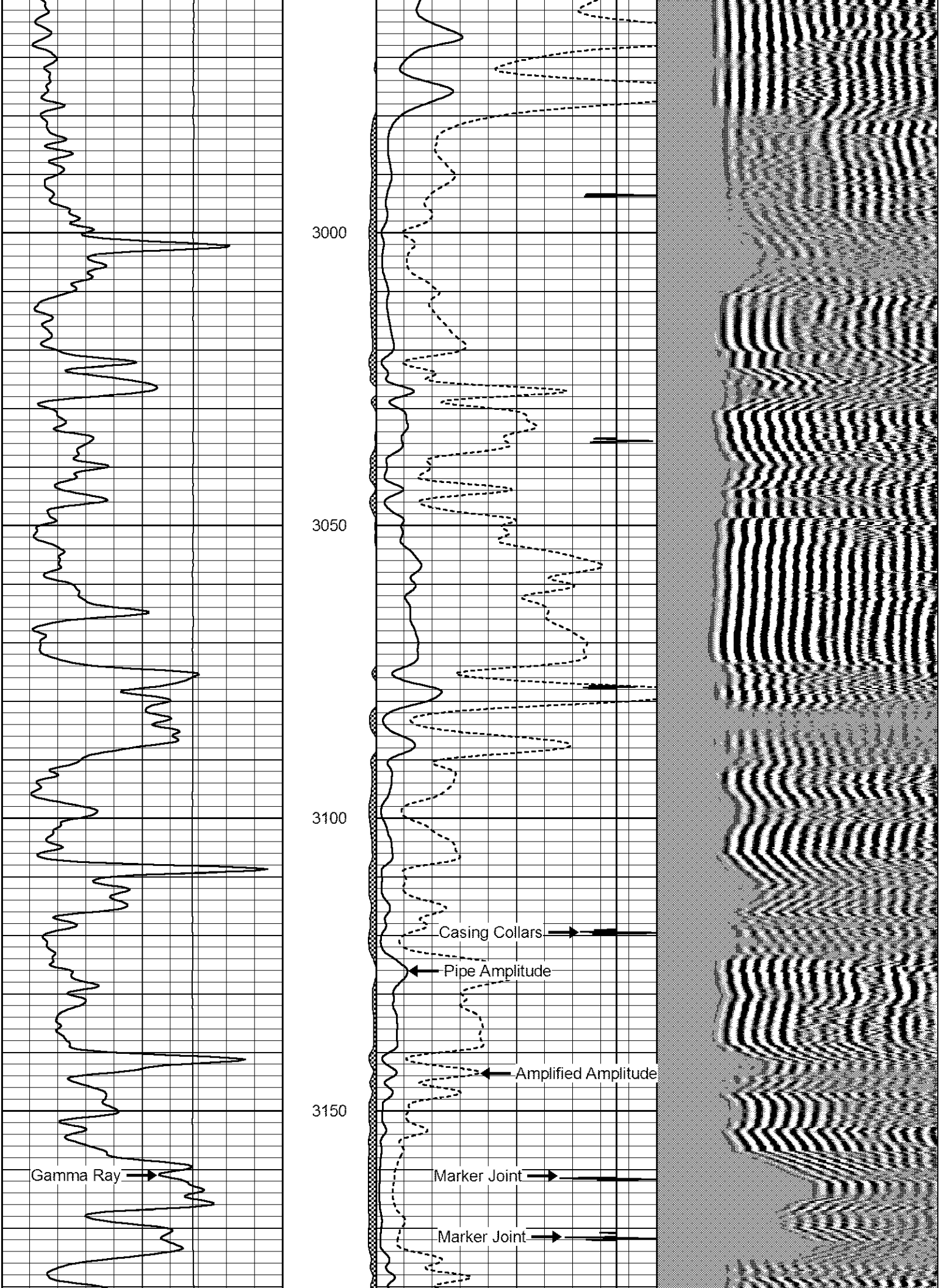
2600

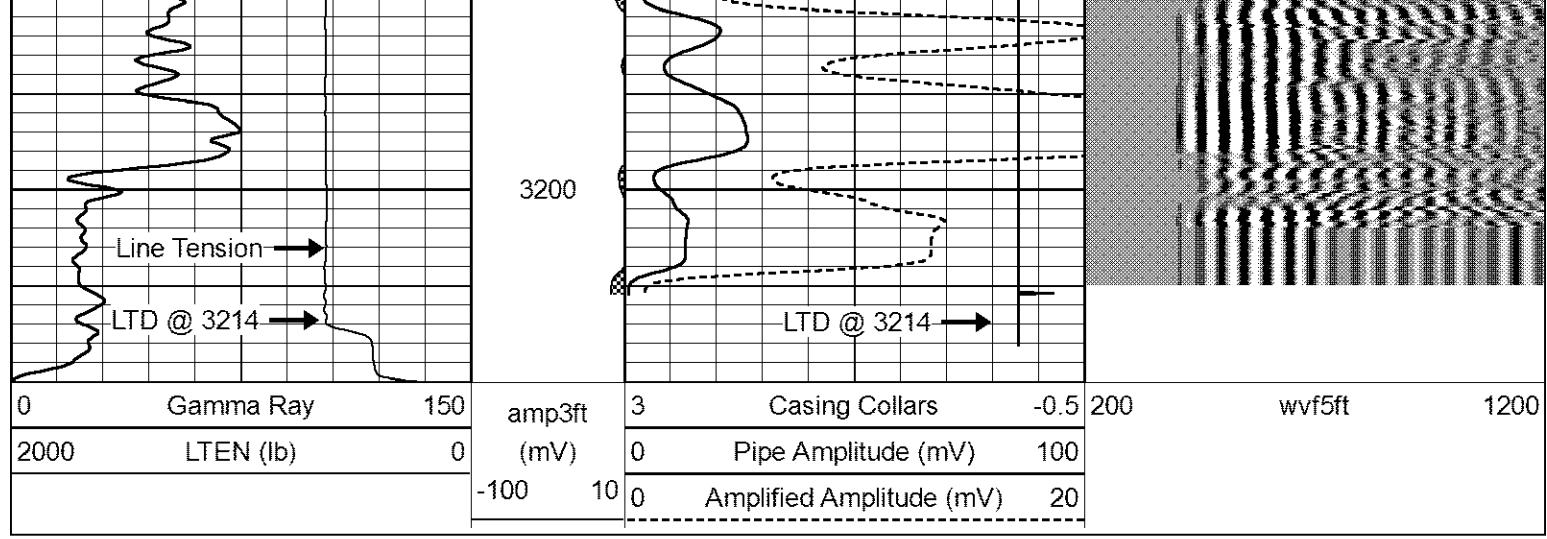
2650

2700



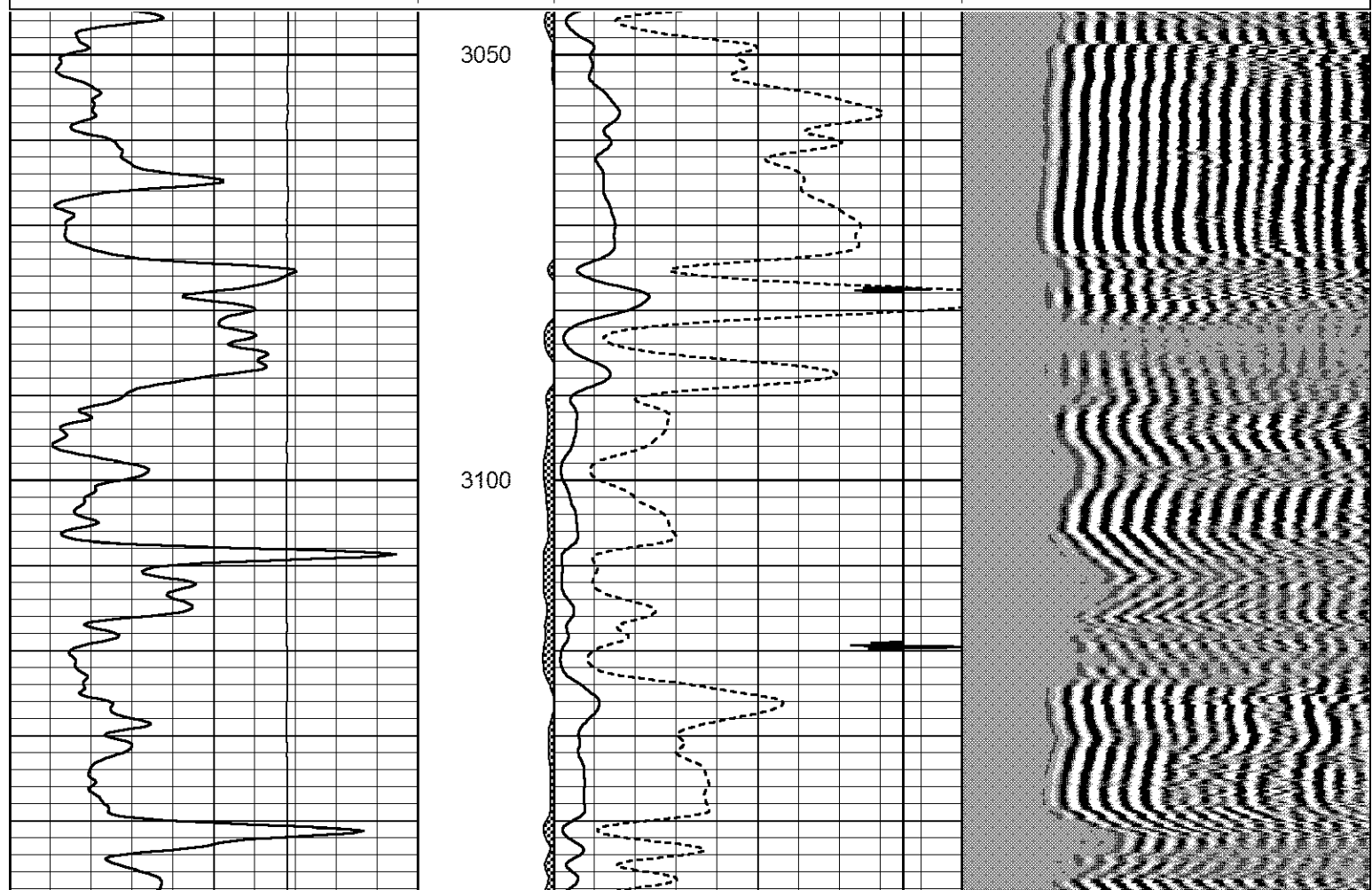
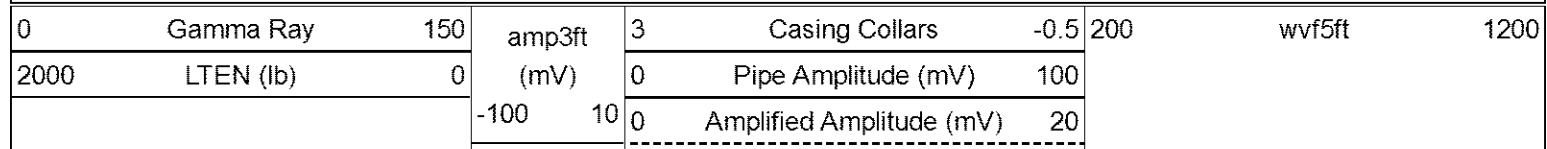


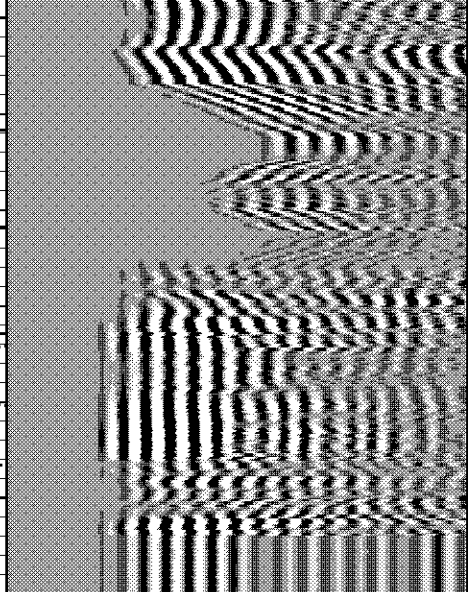
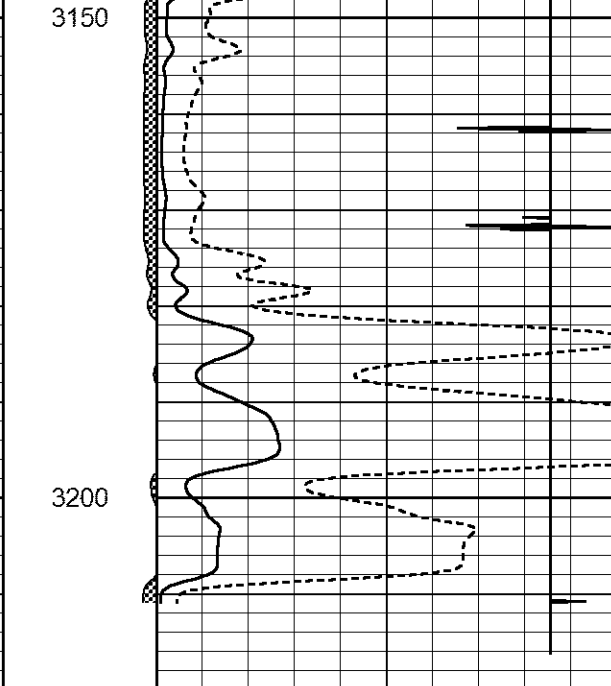
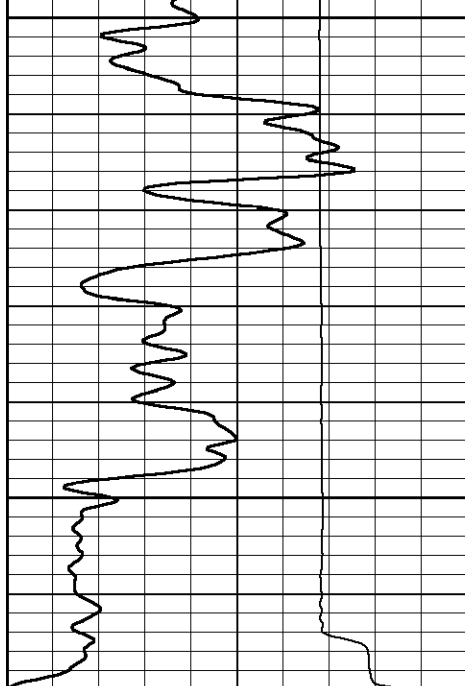




Repeat Section

Database File: hawkins_sledd_b-7.db
 Dataset Pathname: sgrcbl/pass3.1
 Presentation Format: cblbr
 Dataset Creation: Mon Dec 19 14:23:20 2011 by Calc SCH 110223
 Charted by: Depth in Feet scaled 1:240





0 Gamma Ray 150

amp3ft 3 Casing Collars -0.5

200 wvf5ft 1200

2000 LTEN (lb) 0

0 Pipe Amplitude (mV) 100

-100 10

0 Amplified Amplitude (mV) 20