



Gamma Ray / Neutron
Cement Bond Log

DIGITAL LOG Ph. (620) 672-8300

API No.

Company Hawkins Oil & Gas

Well West Robinson # 1-29

Field

County Butler

State Kansas

Location

Sec: 18 Twp: 25S Rge: 5E

Other Services
Portable Mast

Permanent Datum Ground Level Elevation 1396

Log Measured From Kelly Bushing 7 Ft. Above Perm. Datum

Drilling Measured From Kelly Bushing

Elevation
K.B. 1403
D.F.
G.L. 1396

Date 5/18/2012

Run Number One

Type Log GRN

Depth Driller 2657

Depth Logger 2658

Bottom Logged Interval 2656

Top Logged Interval 1300

Type Fluid In Hole Water

Salinity, PPM/CL

Density

Level Full

Max. Rec. Temp. F 102

Operating Rig Time None

Equipment -- Location 13 Pratt

Recorded By D.lear

Witnessed By Hunt Hawkins

Borehole Record

Run No Bit From To Size Wgt. From To

One 5 1/2" 0 TD

Two 5 1/2" TD 1300

Casing Record

From To

<<< Fold Here >>>

All interpretations are opinions based on inferences from electrical or other measurements and we cannot and do not guarantee the accuracy or correctness of any interpretation, and we shall not, except in the case of gross or willful negligence on our part, be liable or responsible for any loss, costs, damages, or expenses incurred or sustained by anyone resulting from any interpretation made by any of our officers, agents or employees. These interpretations are also subject to our general terms and conditions set out in our current Price Schedule.

Comments

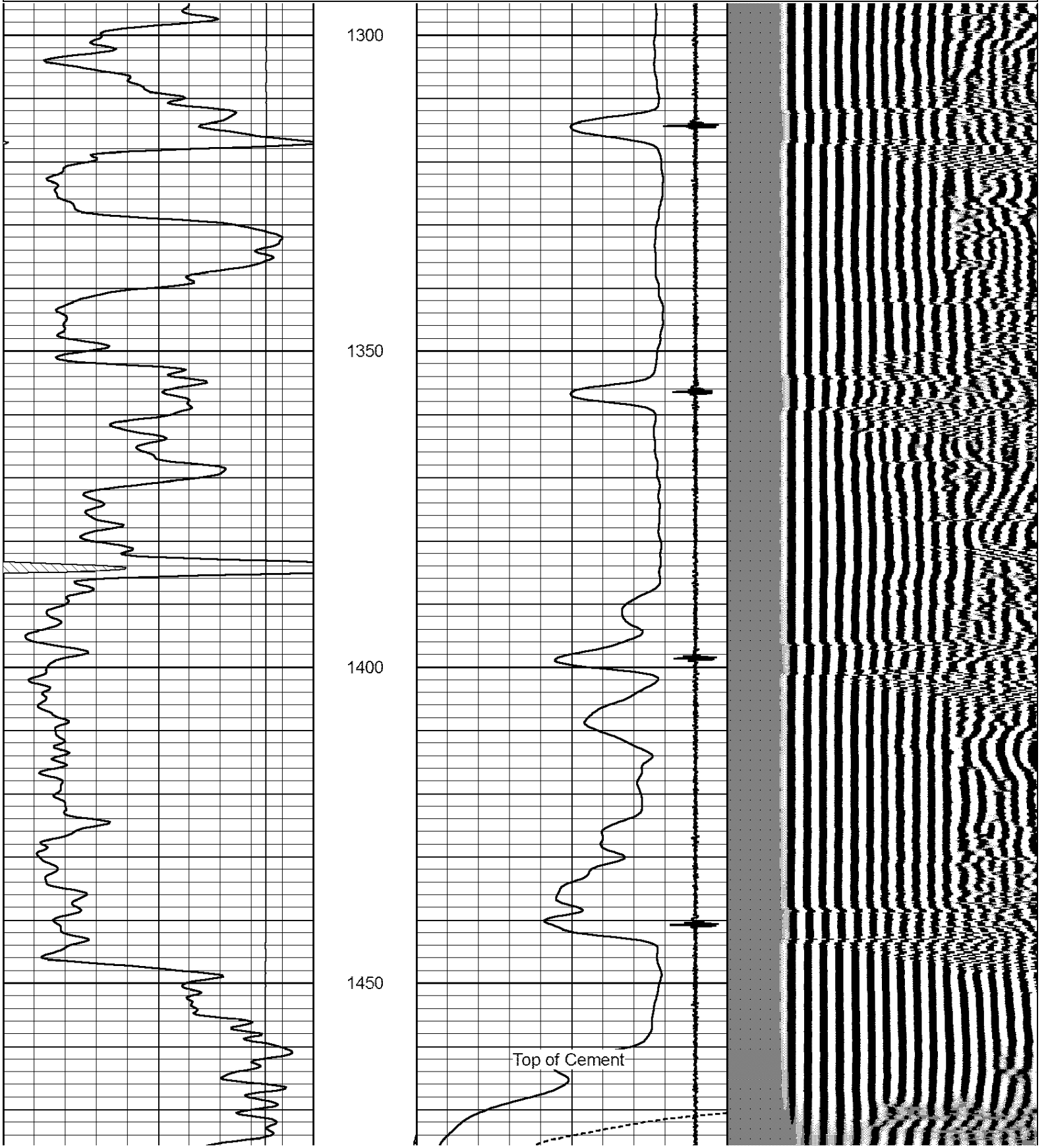
Thank you for using Log-Tech, Inc.
(620) 672-8300
El Dorado, KS
Hwy 254 & 196: NW on Hwy. 196 to 30th,
3/4 E (Stay Left @ Fork)
S Into (Before Power Poles)

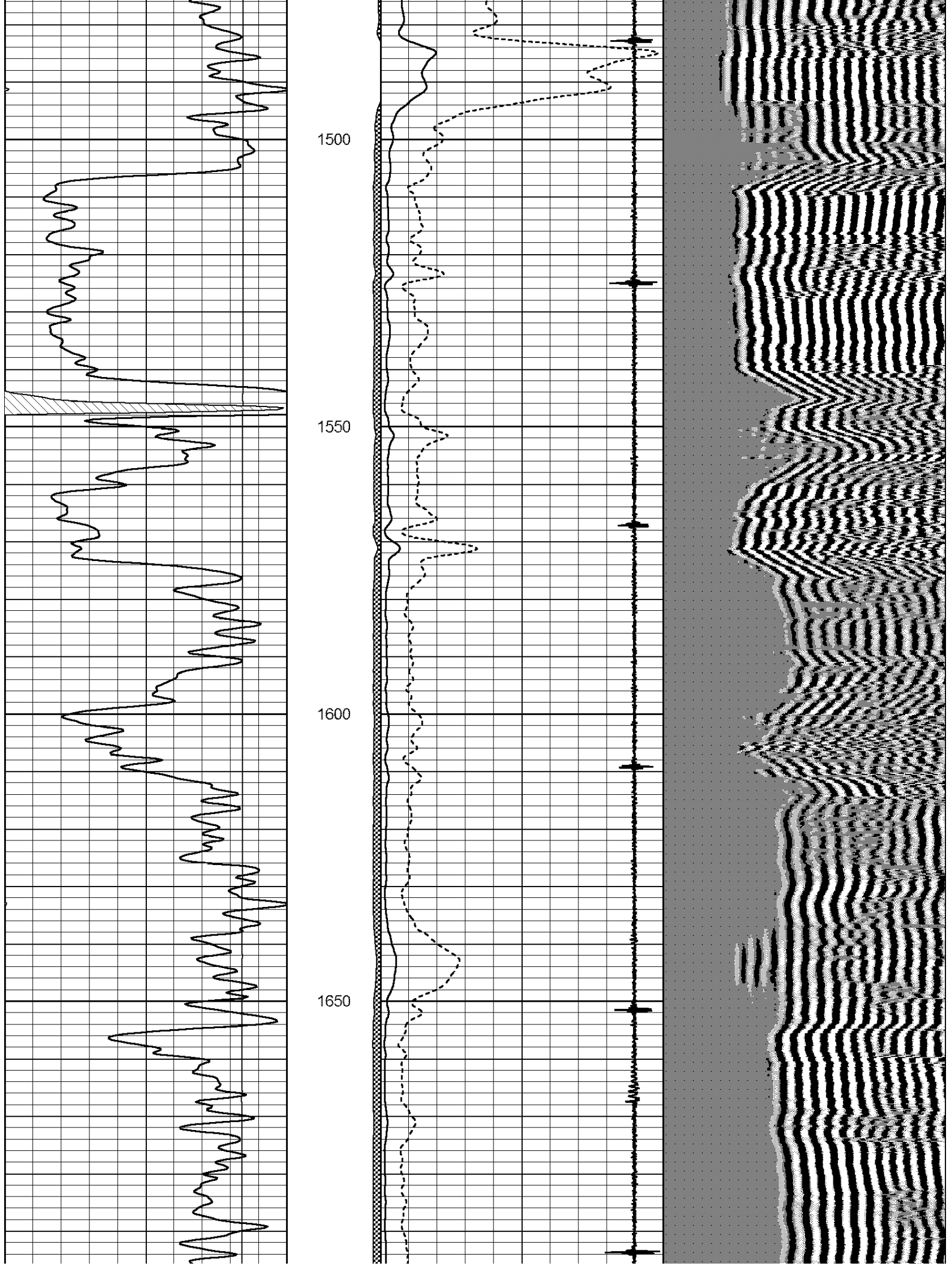


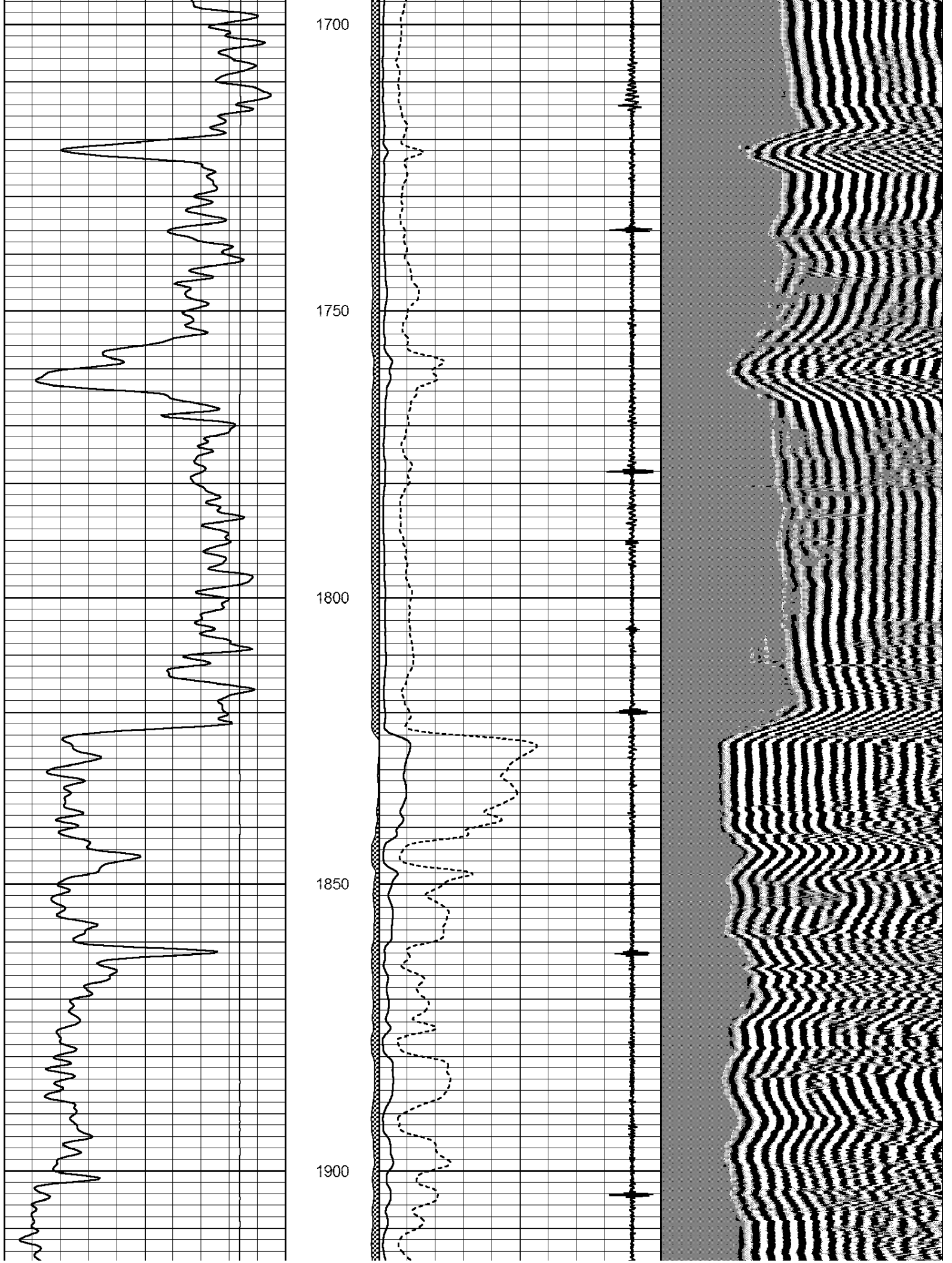
Main Pass

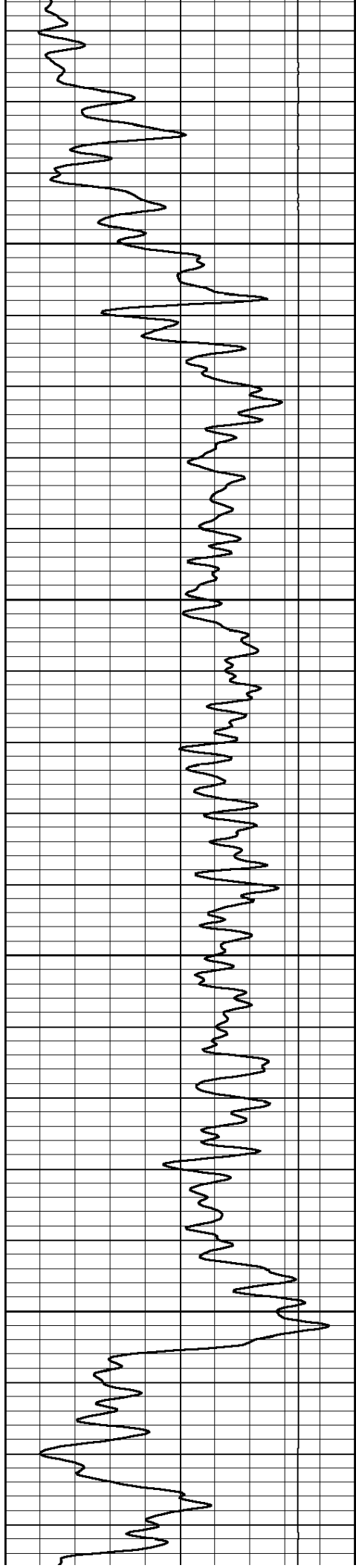
Database File: hawkins_robinson_1_29.db
 Dataset Pathname: grcbl/pass2
 Presentation Format: cbldr
 Dataset Creation: Fri May 18 12:15:31 2012 by Log SCH 120126
 Charted by: Depth in Feet scaled 1:240

0	Gamma Ray	150	amp3ft	8	Casing Collars	-0.9	200	wvf5ft	1200
			(mV)	0	Amplified Amplitude (mV)	100			
			-100	10	Pipe Amplitude (mV)	20			







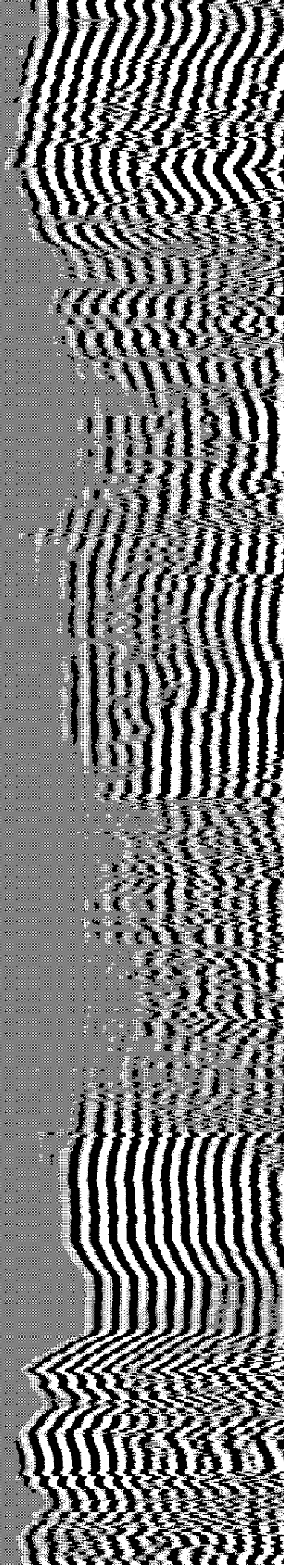
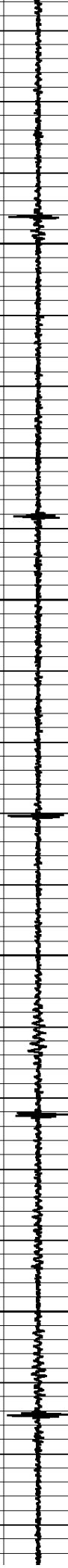
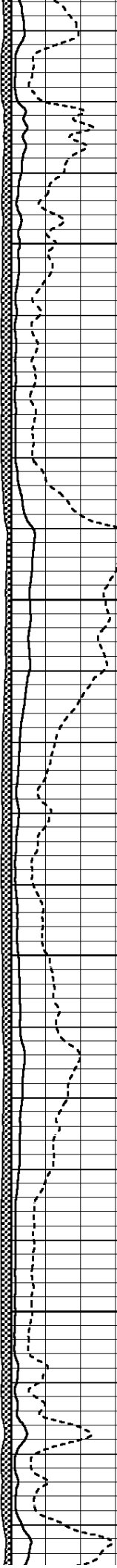


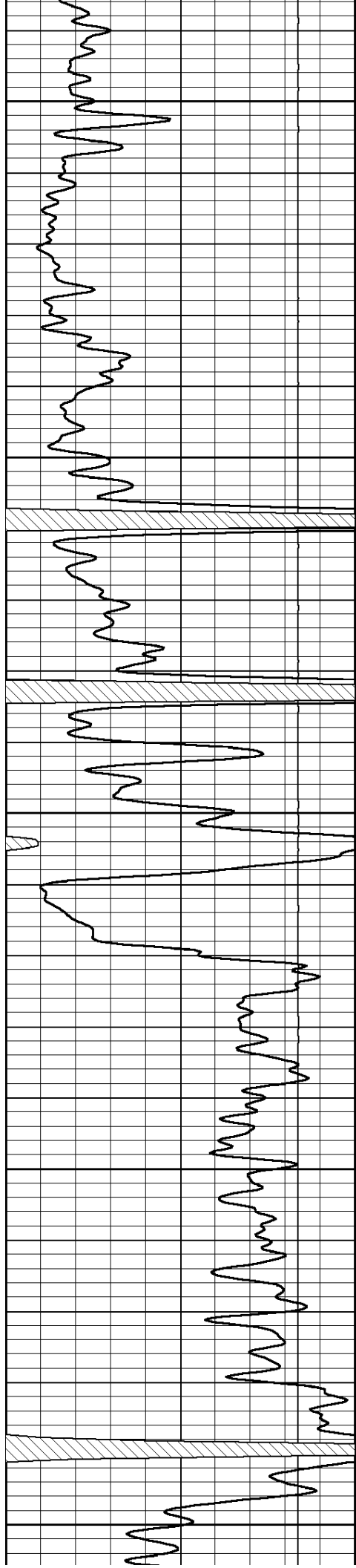
1950

2000

2050

2100





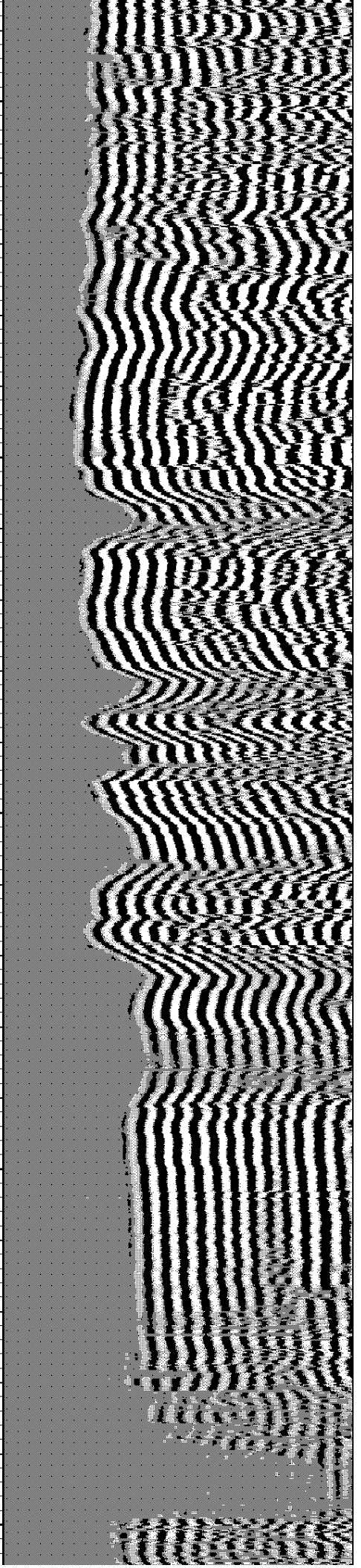
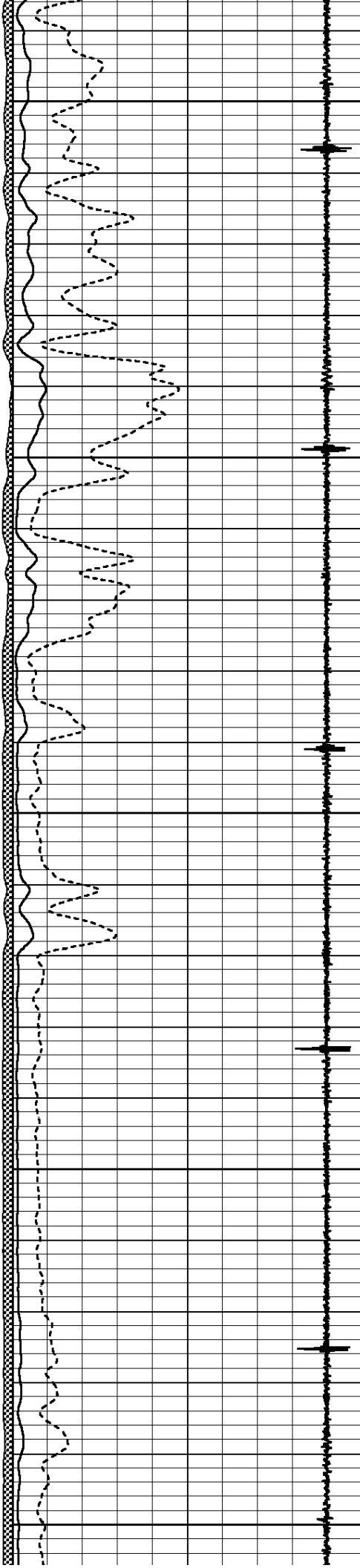
2150

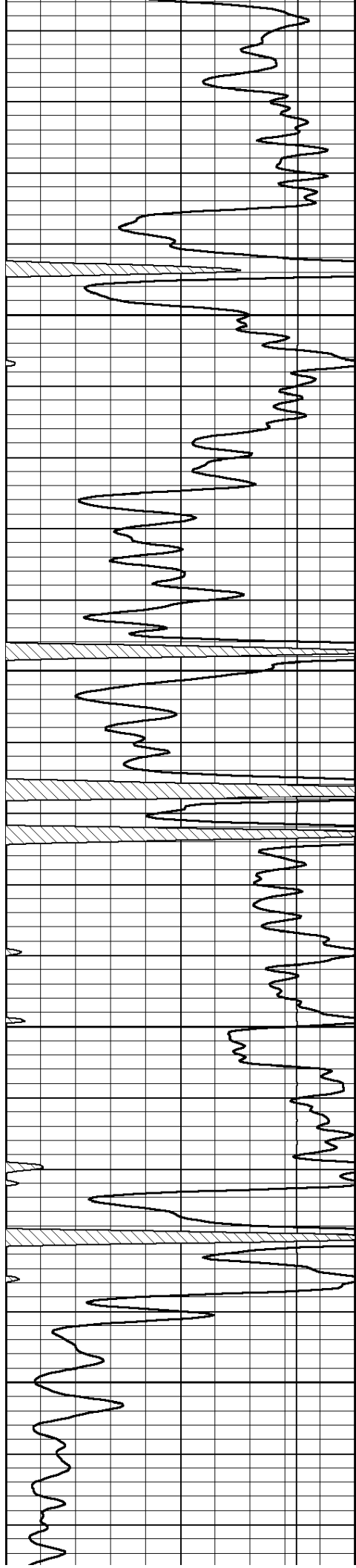
2200

2250

2300

2350



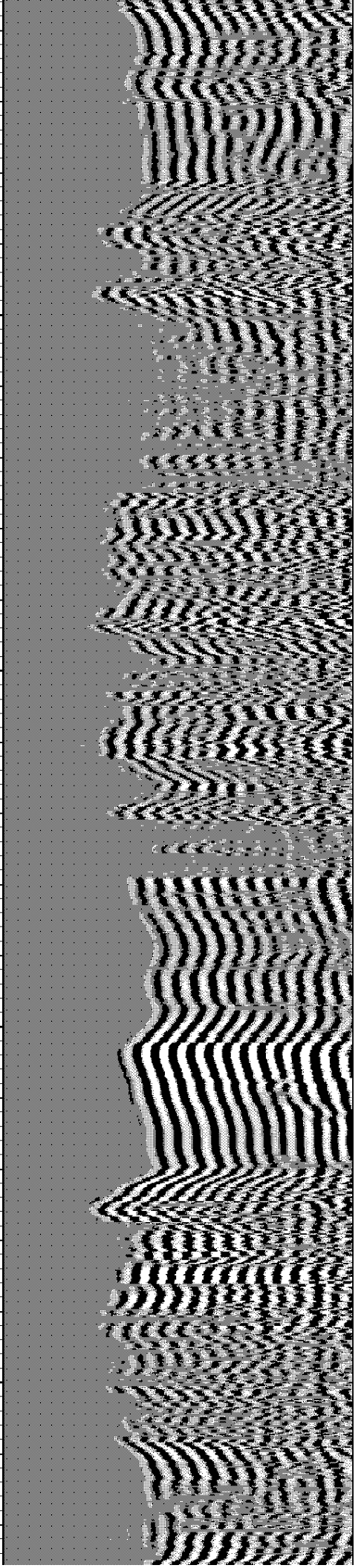
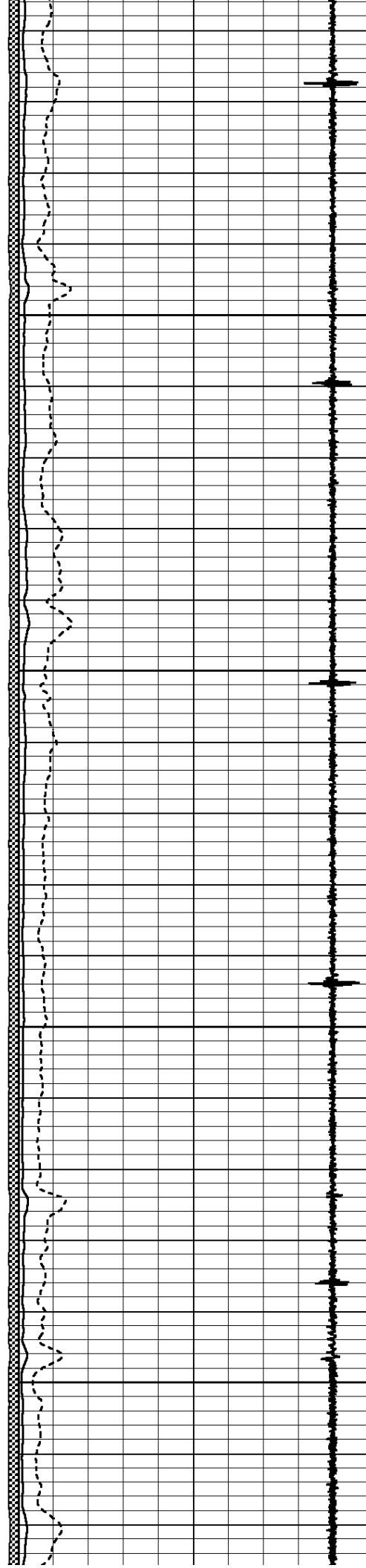


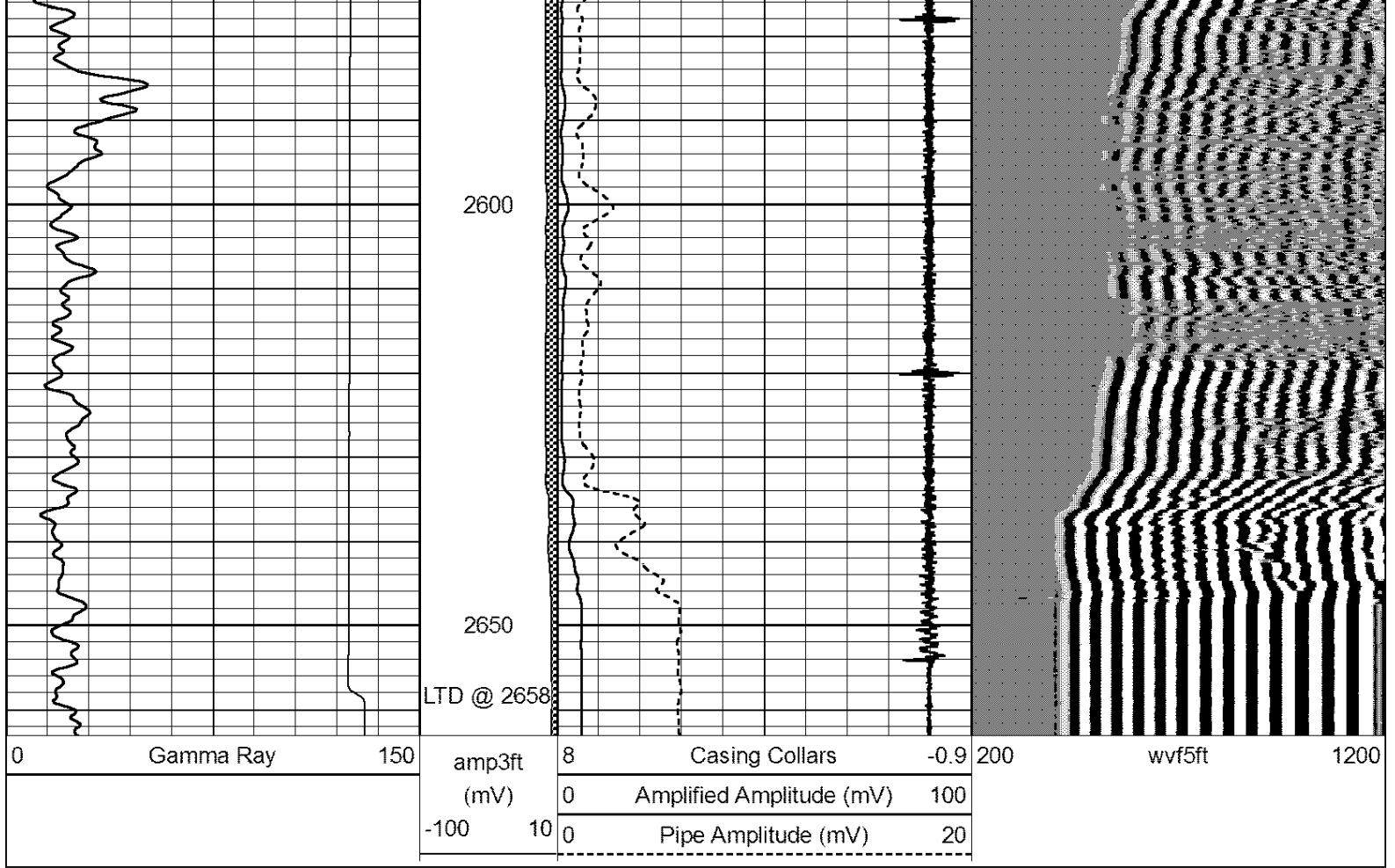
2400

2450

2500

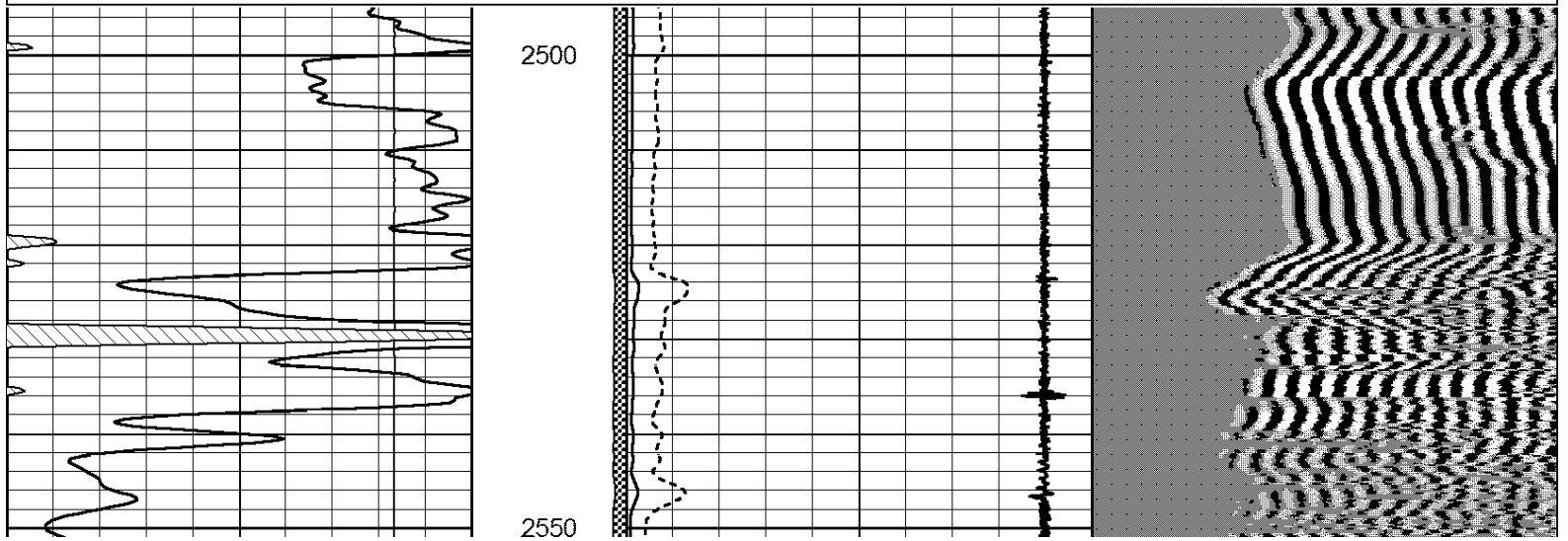
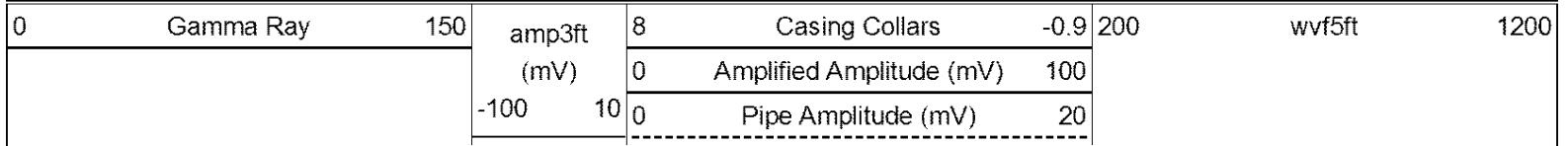
2550

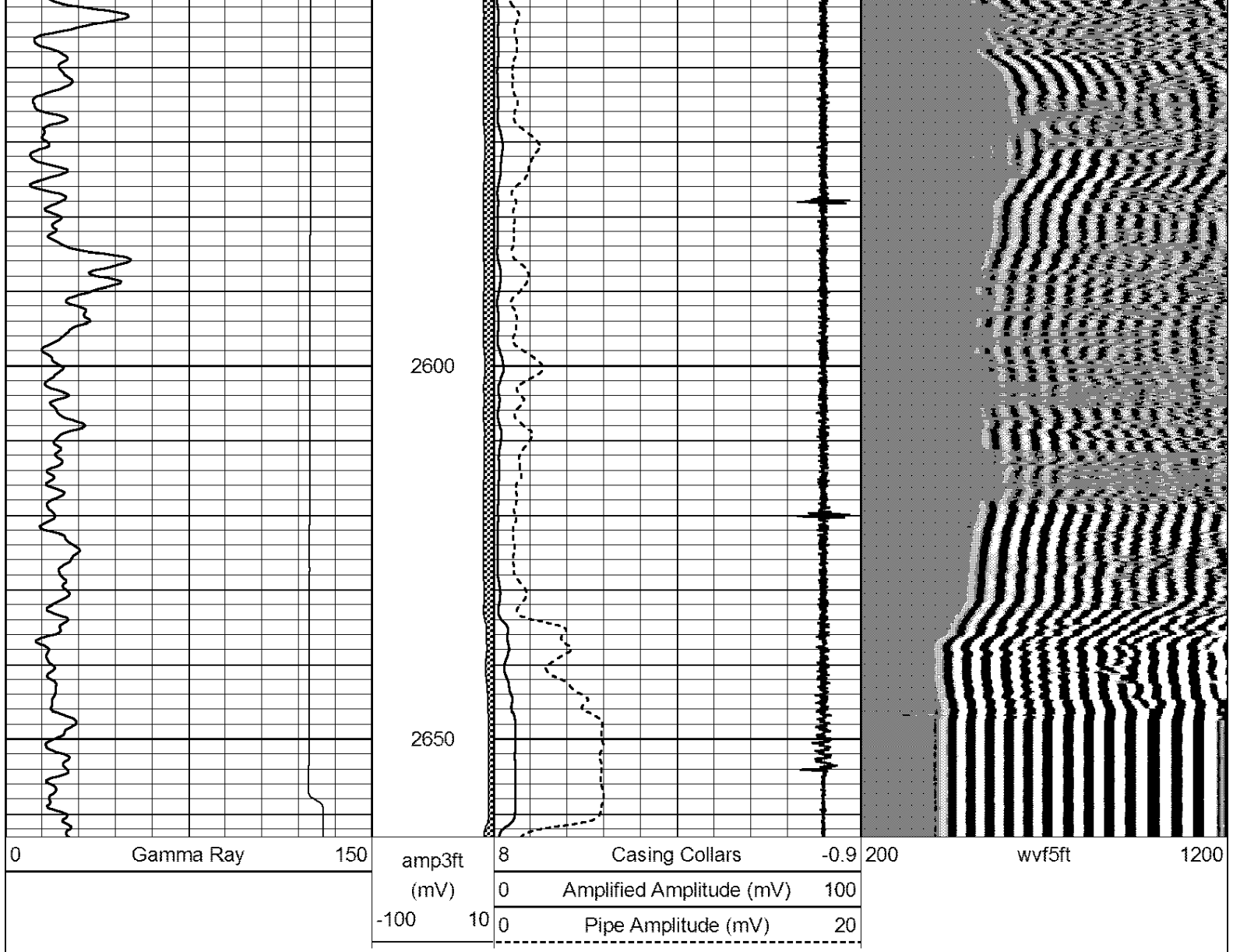




Repeat Section

Database File: hawkins_robinson_1_29.db
 Dataset Pathname: grcbl/pass2.1
 Presentation Format: cblcr
 Dataset Creation: Fri May 18 12:47:04 2012 by Calc SCH 120126
 Charted by: Depth in Feet scaled 1:240

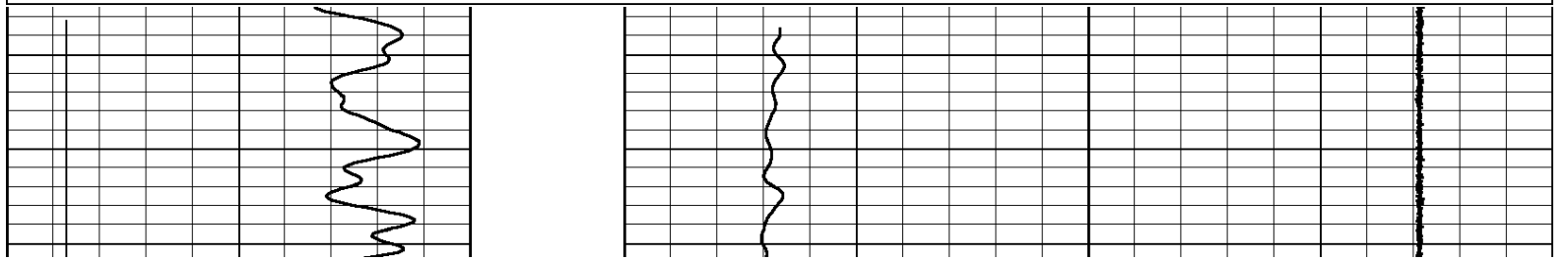


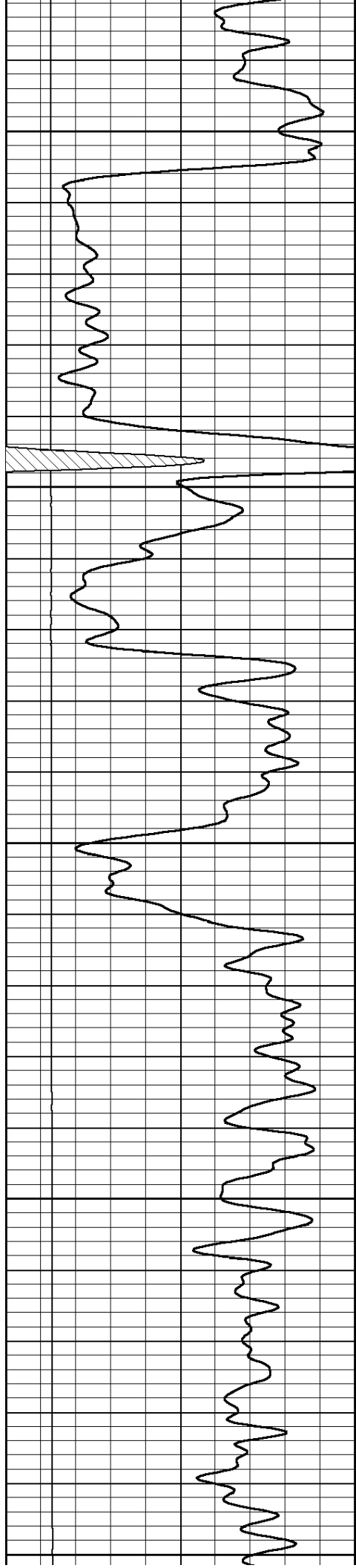


Gamma Neutron Log

Database File: hawkins_robinson_1_29.db
 Dataset Pathname: grn/pass4.2
 Presentation Format: gr-ccl
 Dataset Creation: Fri May 18 14:00:11 2012 by Calc SCH 120126
 Charted by: Depth in Feet scaled 1:240

0	Gamma Ray (GAPI)	150	575	Neutron (NAPI)	10750	
0	lten (lb)	5000		10	Casing Collars	-4
LSPD (ft/min)						





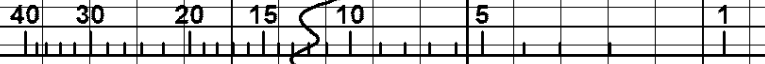
1500

1550

1600

1650

1700



POROSITY LIMESTONE (FLUID FILLED HOLE)

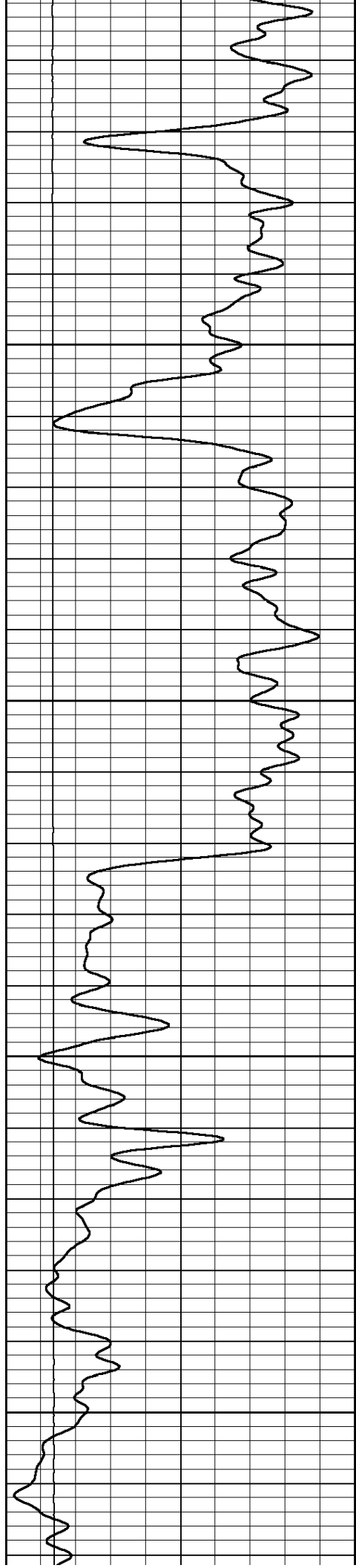
-37

-37

-37

-36

-37

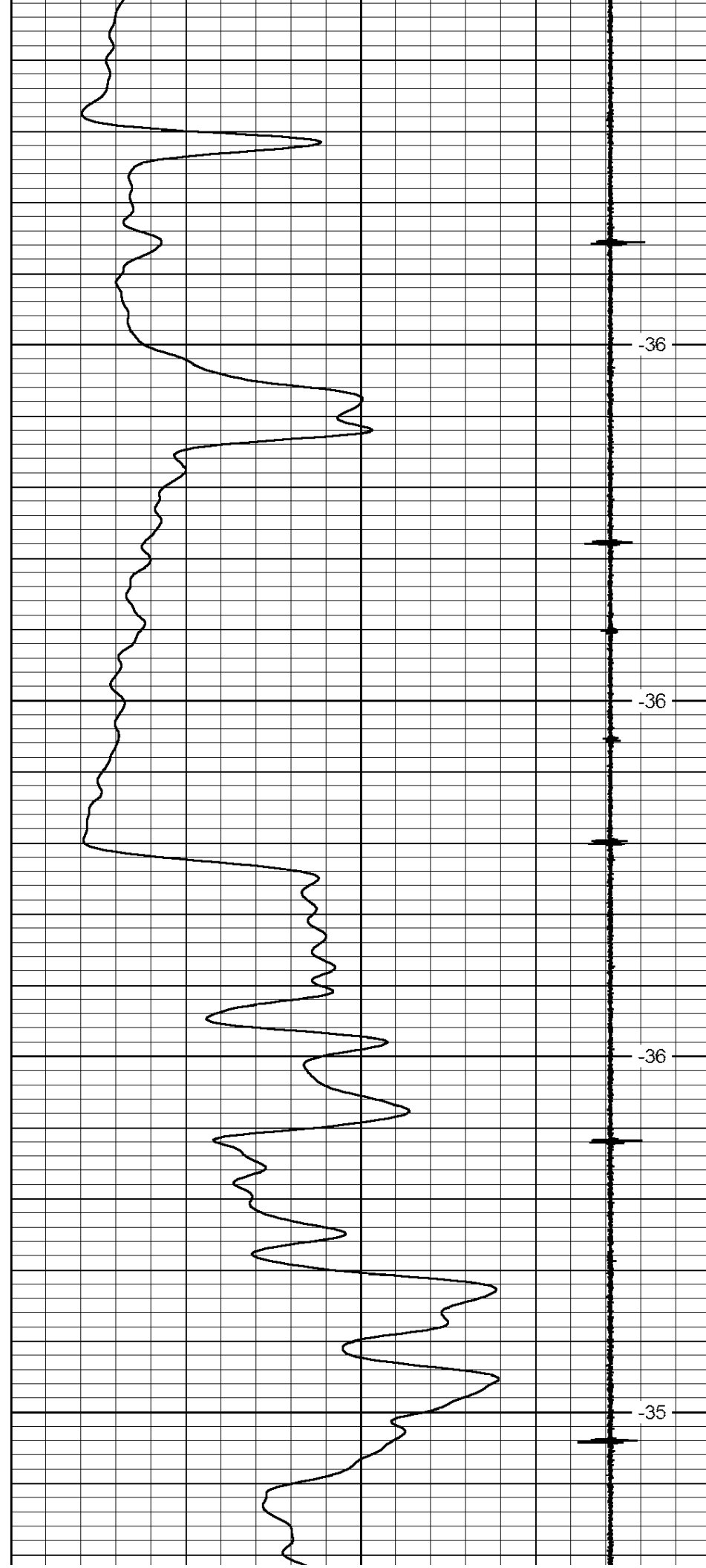


1750

1800

1850

1900

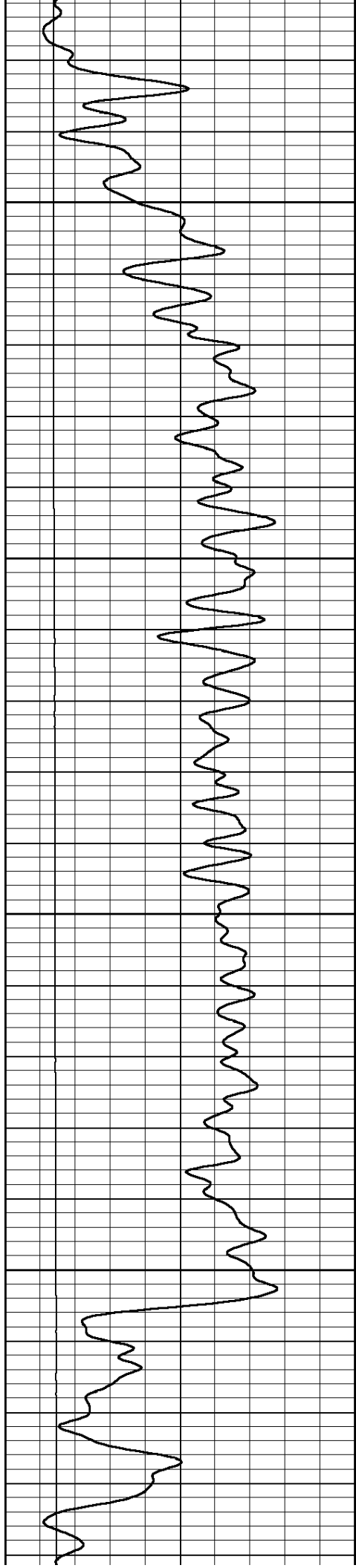


-36

-36

-36

-35

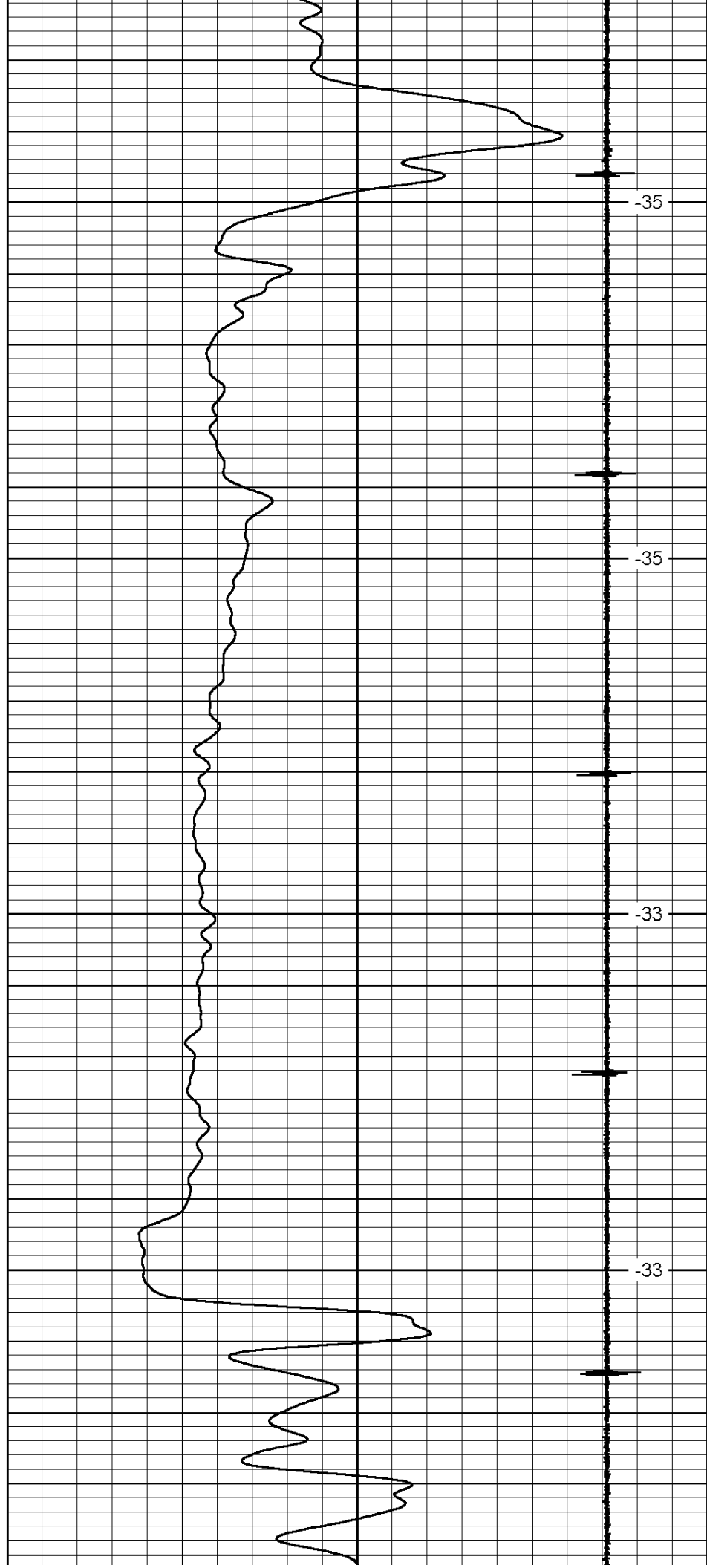


1950

2000

2050

2100

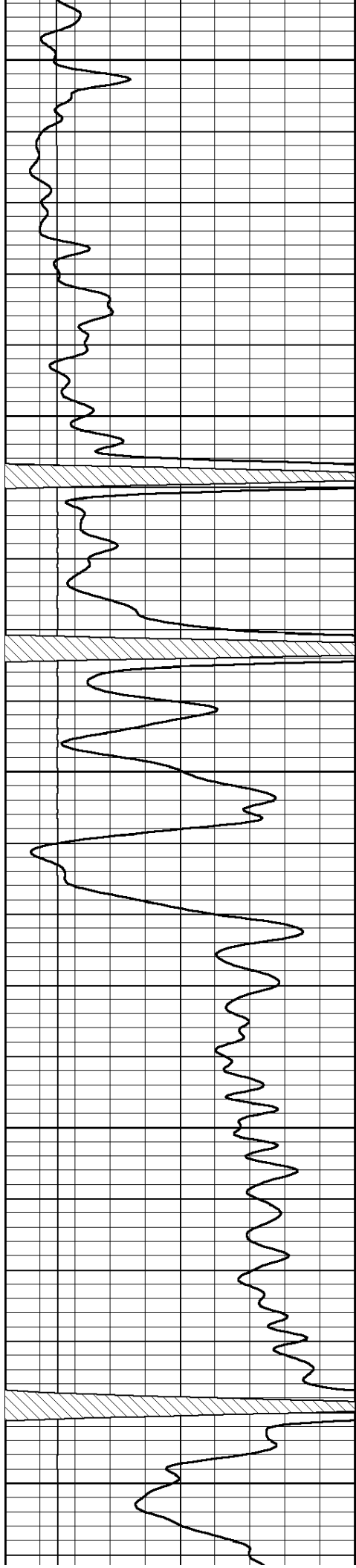


-35

-35

-33

-33



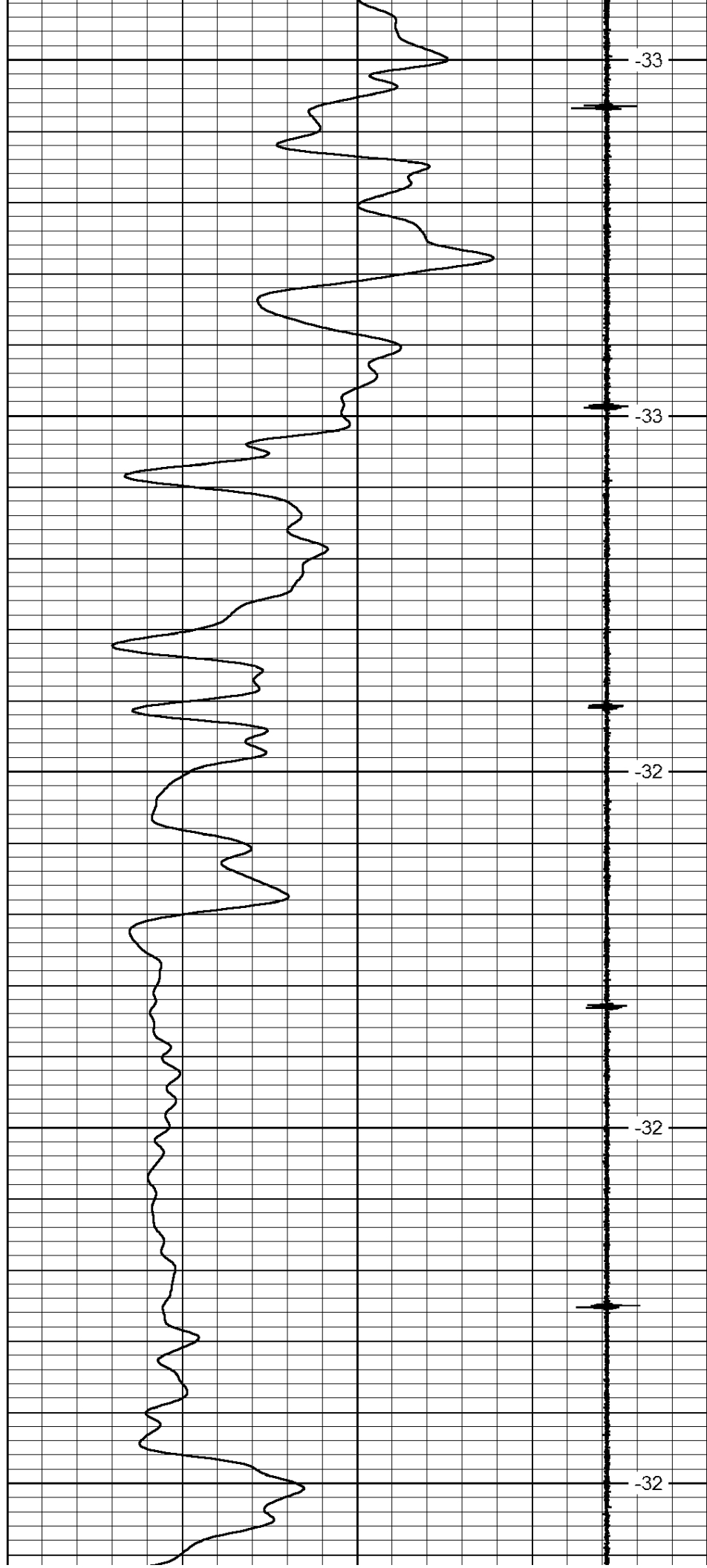
2150

2200

2250

2300

2350



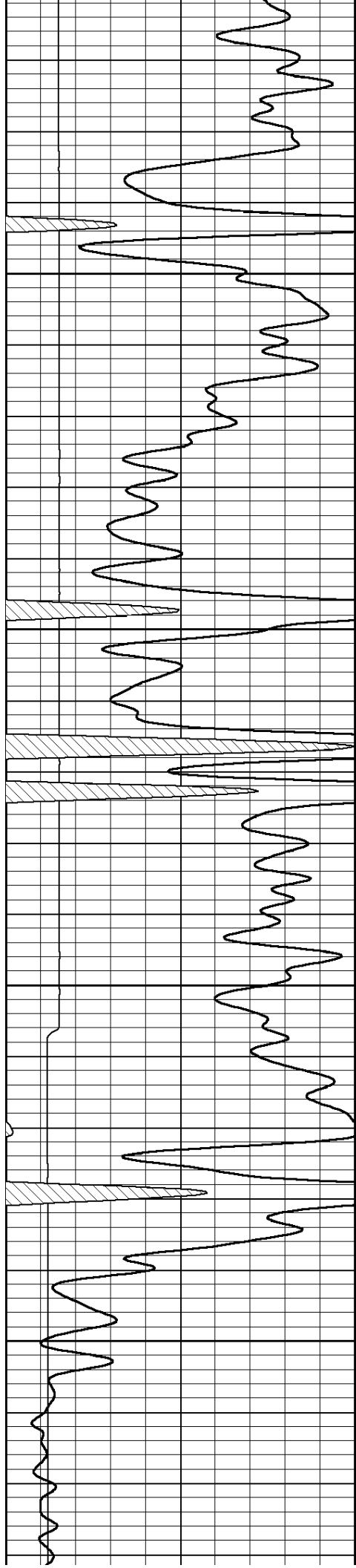
-33

-33

-32

-32

-32



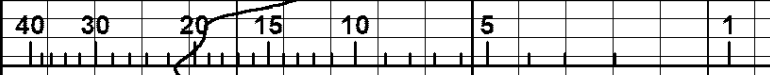
2400

2450

2500

2550

Tool Glitch



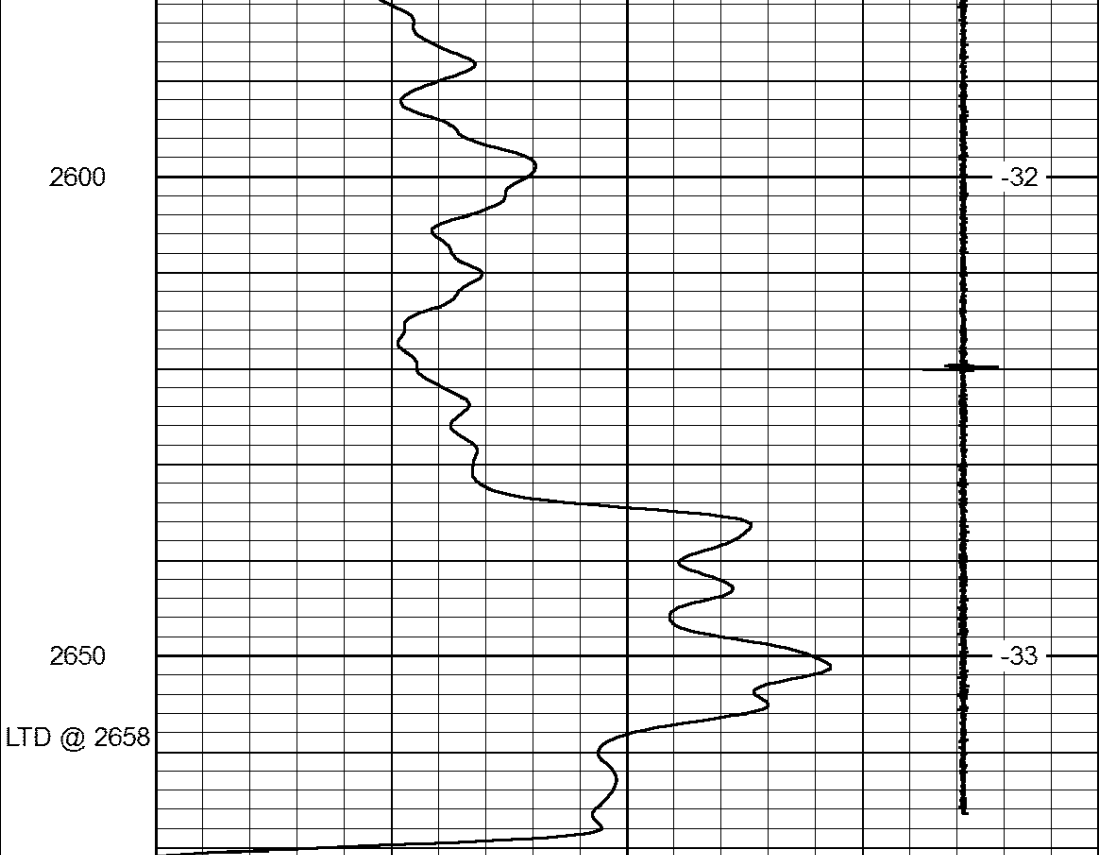
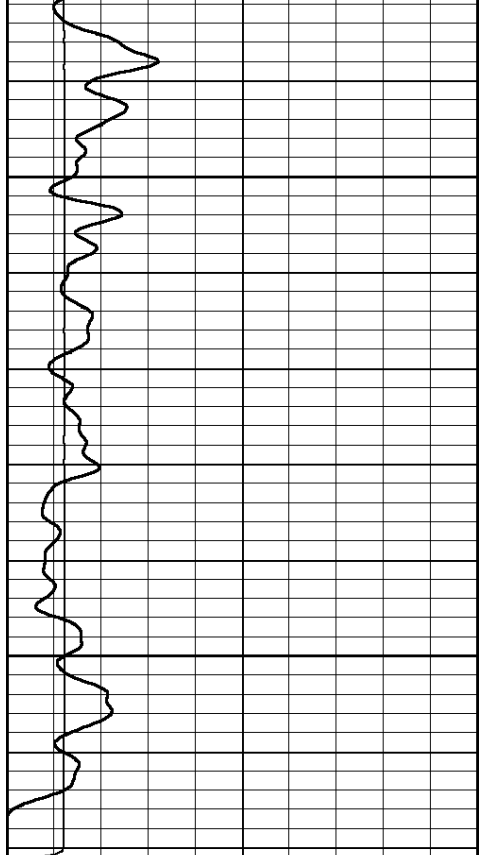
POROSITY LIMESTONE (FLUID FILLED HOLE)

-32

-32

-32

-33



0 Gamma Ray (GAPI) 150
 0 lten (lb) 5000

575 Neutron (NAPI) 10750
 10 Casing Collars -4

LSPD
 (ft/min)